



HAL
open science

Molecular heterogeneity of glioblastomas: does location matter?

Emilie Denicolaï, Emeline Tabouret, Carole Colin, Philippe Metellus, Isabelle Nanni, Celine Boucard, Aurélie Tchoghandjian, David Meyronet, Nathalie Baeza-Kallee, Olivier Chinot, et al.

► To cite this version:

Emilie Denicolaï, Emeline Tabouret, Carole Colin, Philippe Metellus, Isabelle Nanni, et al.. Molecular heterogeneity of glioblastomas: does location matter?. *Oncotarget*, 2016, 1, pp.902 - 913. 10.18632/oncotarget.6433 . hal-01478541

HAL Id: hal-01478541

<https://amu.hal.science/hal-01478541v1>

Submitted on 28 Feb 2017

HAL is a multi-disciplinary open access archive for the deposit and dissemination of scientific research documents, whether they are published or not. The documents may come from teaching and research institutions in France or abroad, or from public or private research centers.

L'archive ouverte pluridisciplinaire **HAL**, est destinée au dépôt et à la diffusion de documents scientifiques de niveau recherche, publiés ou non, émanant des établissements d'enseignement et de recherche français ou étrangers, des laboratoires publics ou privés.

Molecular heterogeneity of glioblastomas: does location matter?

Emilie Denicolaï¹, Emeline Tabouret^{1,2}, Carole Colin¹, Philippe Metellus³, Isabelle Nanni⁴, Celine Boucard², Aurélie Tchoghandjian¹, David Meyronet⁵, Nathalie Baeza-Kallee¹, Olivier Chinot^{1,2}, Dominique Figarella-Branger^{1,6}

¹Aix-Marseille University, CRO2 UMR 911, Inserm UMR_S 911, Marseille, 13385, France

²AP-HM, Timone Hospital, Department of Neuro-Oncology, Marseille, 13385, France

³AP-HM, Timone Hospital, Department of Neuro-Surgery, Marseille, 13385, France

⁴AP-HM, North Hospital, Transfer Laboratory, Marseille, 13915, France

⁵Hospices Civils de Lyon, Centre de Pathologie et de Neuropathologie Est, Lyon, 69677, France

⁶AP-HM, Timone Hospital, Department of Anatomopathology, Marseille, 13385, France

Correspondence to: Dominique Figarella-Branger, **e-mail:** dominique.figarella-branger@univ-amu.fr

Keywords: tumor location, glioblastoma, mesenchymal profile, proneural profile

Received: July 01, 2015

Accepted: November 20, 2015

Published: November 30, 2015

ABSTRACT

Glioblastomas in adults are highly heterogeneous tumors that can develop throughout the brain. To date no predictive-location marker has been identified. We previously derived two glioblastoma cell lines from cortical and periventricular locations and demonstrated distinct transcriptomic profiles. Based on these preliminary results, the aim of this study was to correlate glioblastoma locations with the expression of ten selected genes (*VEGFC*, *FLT4*, *MET*, *HGF*, *CHI3L1*, *PROM1*, *NOTCH1*, *DLL3*, *PDGFRA*, *BCAN*). Fifty nine patients with newly diagnosed glioblastomas were retrospectively included. Tumors were classified into cortical and periventricular locations, which were subsequently segregated according to cerebral lobes involved: cortical fronto-parietal (C-FP), cortical temporal (C-T), periventricular fronto-parietal (PV-FP), periventricular temporal (PV-T), and periventricular occipital (PV-O). Gene expression levels were determined using RT-qPCR. Compared to cortical glioblastomas, periventricular glioblastomas were characterized by a higher expression of two mesenchymal genes, *VEGFC* ($p = 0.001$) and *HGF* ($p = 0.001$). Among cortical locations, gene expressions were homogeneous. In contrast, periventricular locations exhibited distinct expression profiles. PV-T tumors were associated with higher expression of two proneural and cancer stem cell genes, *NOTCH1* ($p = 0.028$) and *PROM1* ($p = 0.033$) while PV-FP tumors were characterized by high expression of a mesenchymal gene, *CHI3L1* ($p = 0.006$). Protein expression of *NOTCH1* was correlated with RNA expression levels. PV-O glioblastomas were associated with lower expression of *VEGFC* ($p = 0.032$) than other periventricular locations, whereas *MET* overexpression remained exceptional. These data suggest a differential gene expression profile according to initial glioblastoma location.

INTRODUCTION

Glioblastomas are the most common and aggressive primary brain tumors in adults. Despite increasing numbers of new innovative therapeutic approaches, the recurrence remains inevitable. For the moment, first line treatment includes radiotherapy plus concomitant and adjuvant temozolomide. This treatment regimen has been shown to increase median overall survival (OS) from 12.1

to 14.6 months [1]. Recently, the addition of bevacizumab to standard glioblastoma treatment was evaluated in two large phase III trials, demonstrating improvement of progression free survival (PFS) but no OS benefit [2, 3]. To date, these results did not lead to modification of standard of care.

Understanding of molecular and cellular characteristics involved in gliomagenesis process remains a corner stone of therapeutic developments. Glioblastomas

were characterized by a major molecular heterogeneity based on genetic diversity, cell origin variability and strong interactions with local microenvironment [4, 5]. Molecular characterizations of these tumors have led to propose molecular classification of glioblastomas into three subgroups: proneural, mesenchymal, and proliferative [6]. In addition, The Cancer Genome Atlas (TCGA) classified glioblastomas on the basis of *PDGFRA*, *IDH1*, *EGFR*, and *NF1* abnormalities in classical, mesenchymal, proneural, and neural subtypes, and these four subgroups seemed to present distinct outcomes [7–9]. More recently, another classification related to methylation profile was also reported [10]. Furthermore, glioblastomas display high cellular heterogeneity based on the hypothesis of cancer stem cells (CSC) and precursor cell populations, leading to glioblastoma initiation, treatment resistance, tumor recurrence and invasiveness ability [11, 12]. Various CSC surface markers have been described in glioblastomas, including the most frequently represented CD133 (PROM1), A2B5, and CD15 (stage-specific embryonic antigen 1) [13–16]. Although, some clinical studies showed that only the glycoprotein CD133 had a prognostic value [17]. CSC subtypes with distinct gene expression profiles and growth patterns have also been reported in glioblastomas [18, 19]. In a previous study, we established two glioblastoma stem-like cell lines from periventricular and cortical tumor locations, and we observed specific *in vitro* and *in vivo* behaviors [20]. In particular, transcriptomic analyses showed a mesenchymal profile for periventricular glioblastoma stem-like cell line, with overexpression of *VEGFC* and *CHI3LI* and a proneural profile for cortical glioblastoma stem-like cell line with overexpression of *PROM1*, *DLL3*, and *BCAN*.

Based on these preliminary results and the published molecular classifications which highlighted two main genetic subtypes (mesenchymal and proneural) [6–8], the aim of the present study was to evaluate the expression of five mesenchymal genes (*VEGFC*, *FLT4*, *MET*, *HGF*, *CHI3LI*), and five proneural genes (*PROM1*, *NOTCH1*, *DLL3*, *PDGFRA*, *BCAN*) in a series of 59 newly diagnosed glioblastomas. We postulate that, according to their location, glioblastomas display differential gene expression profiles.

RESULTS

Patient characteristics

Fifty nine patients were included in this study, with a median age at diagnosis of 61.3 years (range, 20.5–78.2). At diagnosis, 46 (78%) patients presented conserved general status (KPS \geq 70). Gross total surgical resections were performed in 40 patients (67.8%) and diagnostic biopsies were taken from the remaining 19 patients (32.2%). Radio-chemotherapy was used as the first line

treatment for 72.9% of the patients. All tumors were IDH1 R132H negative. *MGMT* promoter methylation status was known for 51/59 patients: the *MGMT* promoter was methylated in 16/51 tumor samples (31%). *EGFR* amplification status was known for all patients: *EGFR* was amplified in 27/59 (46%) tumor samples. Regarding the tumor location, 24 (40.7%) patients belonged to cortical tumor group and 35 (59.3%) to periventricular tumor group. Among cortical tumors, 19 (32.2%) were fronto-parietal and 5 (8.5%) temporal, whereas in periventricular subgroup, 12 (20.3%) tumors were fronto-parietal, 12 (20.3%) temporal and 11 (18.7%) occipital (Table 1).

Molecular marker expression and tumor location

Cortical versus periventricular location

To identify putative differential expression patterns according to glioblastoma location, *VEGFC*, *FLT4*, *MET*, *HGF*, *CHI3LI*, *PROM1*, *NOTCH1*, *DLL3*, *PDGFRA*, and *BCAN* RNA expression levels were compared between cortical ($n = 24$) and periventricular tumor samples ($n = 35$). *VEGFC* and *HGF* markers displayed a significant differential expression between cortical and periventricular locations, ($p = 0.001$ and $p = 0.001$, respectively), and *MET* expression tended to differ between locations ($p = 0.058$) (Figure 1).

Up to five tumor locations identification

Tumor locations were analyzed according to cerebral lobe involvement and ventricular anatomy. Cortical tumors were dichotomized into fronto-parietal (C-FP) and temporal (C-T) locations, and periventricular tumors were divided into fronto-parietal (PV-FP), temporal (PV-T), and occipital (PV-O) locations. *VEGFC* ($p < 0.001$), *HGF* ($p = 0.014$), and *CHI3LI* ($p = 0.043$) RNA expression levels were significantly different between the five glioblastoma locations (Figure 2 and Supplementary Table S1). Moreover, we specifically identified significant differences in the expression of *VEGFC*, *FLT4*, *PROM1*, *NOTCH1*, and *CHI3LI* between distinct subgroups of periventricular tumors (Supplementary Table S2). In contrast, no difference was observed between the two cortical locations. Finally, *DLL3*, *PDGFRA*, and *BCAN* were heterogeneously distributed within the five subgroups (Figure 2 and Supplementary Table S1). Accordingly, periventricular locations exhibited distinct expression profiles. In particular, *VEGFC* expression was significantly higher in PV-T and PV-FP tumors than in PV-O tumors ($p = 0.004$ and $p = 0.032$, respectively). In contrast, mean *MET* expression appeared lower in PV-FP ($23 \pm 4.1\%$), and PV-T ($19 \pm 4.9\%$) locations than in the PV-O ($419 \pm 292.9\%$) location ($p = 0.276$). Mean *MET* expression in the PV-O subgroup reflected two tumor samples with very high *MET* expression (1259% and 3126%). Moreover, PV-T tumors were associated with higher expression of two proneural and cancer stem cell genes,

Table 1: Patients characteristics (n = 59)

Characteristics	n = 59	(%)
Median age, years (range)	61.3 (20.5–78.2)	
Gender		
Male / Female	36 / 22	(62 / 38)
KPS score		
≥ 70	46	(78)
< 70	13	(22)
Type of surgery		
Gross total resection	40	(67.8)
Other (Partial exeres, biopsy)	19	(32.2)
First line treatment		
Radio-chemotherapy	43	(72.9)
Radiotherapy alone	4	(6.8)
Alkylating agents	11	(18.6)
Molecular data		
MGMT methylated / unmethylated	16 / 35	(31 / 69)
EGFR amplification	27	(46)
Location		
<u>Cortical</u>	24	(40.7)
Cortical fronto-parietal	19	(32.2)
Cortical temporal	5	(8.5)
<u>Periventricular</u>	35	(59.3)
Periventricular fronto-parietal	12	(20.3)
Periventricular temporal	12	(20.3)
Periventricular occipital	11	(18.7)

Abbreviations: O(6)-Methylguanine-DNA methyltransferase (MGMT) and Epidermal growth factor receptor (EGFR).

PROM1 ($p = 0.033$), and *NOTCH1* ($p = 0.028$) while PV-FP tumors were characterized by a higher expression of *CHI3L1* ($p = 0.006$) (Figure 2 and Supplementary Table S1). Interestingly, protein expression analysis of NOTCH1 showed a significant difference between the five glioblastoma locations ($p = 0.037$) and was associated with RNA expression levels ($p = 0.004$). The NOTCH1 positive staining was mostly found in cytoplasm of positive cells (Figure 3A). NOTCH1 positive staining was higher in PV-T location (82%) and lower in PV-FP location (20%) (Figure 3B). Clinical characteristics and gene expression levels of the five main tumor locations are summarized in Figure 4.

Correlation between marker expressions

By the Spearman correlation test, *VEGFC* RNA expression was correlated with that of *HGF* ($p < 0.001$),

while *NOTCH1* expression was correlated with that of *PROM1* ($p < 0.001$) and inversely with that of *CHI3L1* ($p = 0.003$). Other correlations related to marker expression are listed in Supplementary Table S3.

DISCUSSION

In this study, we correlated glioblastoma locations with the expression of five mesenchymal genes (*VEGFC* and its receptor *FLT4*, *HGF* and its receptor *MET*, and *CHI3L1*) and five proneural genes (*PROM1*, *NOTCH1*, *DLL3*, *PDGFRA*, and *BCAN*). Initially, glioblastomas were classified as cortical or periventricular lesions according to previous reports [20, 21], and they were then separated into five subgroups according to cerebral lobes: two cortical locations (C-T and C-FP) and three periventricular locations (PV-FP, PV-T, and PV-O).

Among genes, *DLL3*, *PDGFRA* and *BCAN* were heterogeneously distributed across subgroups. Therefore, we focused our study on the seven remaining markers. Expression of the two mesenchymal markers, *VEGFC* and *HGF*, was significantly higher in periventricular glioblastomas than in cortical glioblastomas. We showed in our previous study that a mesenchymal signature was recorded among periventricular glioblastomas, whereas cortical glioblastomas displayed a classical or proneural molecular profile [20]. In a recent study, MRI data were correlated to molecular profiles of patients classified according to the TCGA subgroups. The extent of contrast enhancement was significantly associated with proneural and mesenchymal molecular subtypes. Specifically, the mesenchymal subtype showed more diffuse contrast enhancement than the proneural subtype [22]. Although these authors did not correlate glioblastoma locations

(cortical *versus* periventricular) with genetic signatures, these data clearly suggest distinct growth properties between proneural and mesenchymal glioblastomas.

The *VEGFC* gene encodes one of the most important proteins involved in the activation of tumor angiogenesis and lymphangiogenesis [23], and its expression is strongly associated with migration and metastasis of many cancers [24]. Its main receptor, *FLT4*, was also strongly expressed in all glioblastomas of the present study, regardless of location. Previous descriptive MRI studies indicated that glioblastomas of subventricular zones (periventricular glioblastomas) were more likely to be multifocal at diagnosis, and recurred at greater distances from initial lesions than cortical glioblastomas [25]. Therefore, strong *VEGFC* expression in periventricular tumors might contribute to their high infiltrative properties and especially in PV-FP and PV-T tumors in contrast to cortical tumors with a low

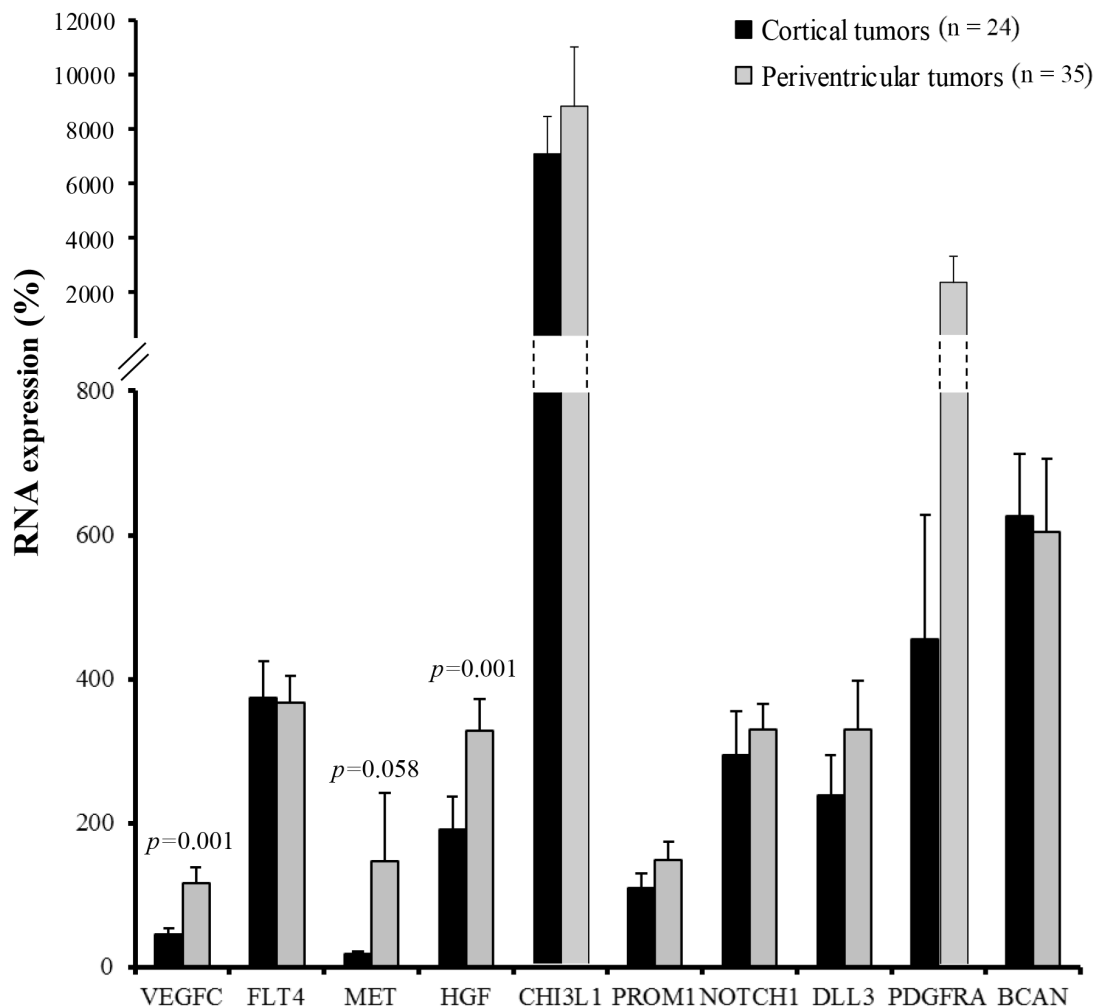


Figure 1: Cortical tumors (dark grey, n = 24) versus periventricular tumors (light grey, n = 35) RNA expression profile. *VEGFC*, *FLT4*, *MET*, *HGF*, *CHI3L1*, *PROM1*, *NOTCH1*, *DLL3*, *PDGFRA*, and *BCAN* RNA expression were quantified by RT-qPCR. Expression levels were expressed as percentages of expression compared to normal adult human brain samples. Bars indicate the Standard Error of the Mean (SEM). Correlations between tumor locations and RNA expression profiles were analyzed using non-parametric Mann-Whitney tests.

Genes	Kruskal Wallis test
<i>CHI3L1</i>	$p=0.043$
<i>HGF</i>	$p=0.014$
<i>MET</i>	$p=0.276$
<i>VEGFC</i>	$p<0.001$
<i>FLT4</i>	$p=0.190$
<i>NOTCH1</i>	$p=0.170$
<i>PROM1</i>	$p=0.276$
<i>DLL3</i>	$p=0.912$
<i>PDGFRA</i>	$p=0.240$
<i>BCAN</i>	$p=0.920$

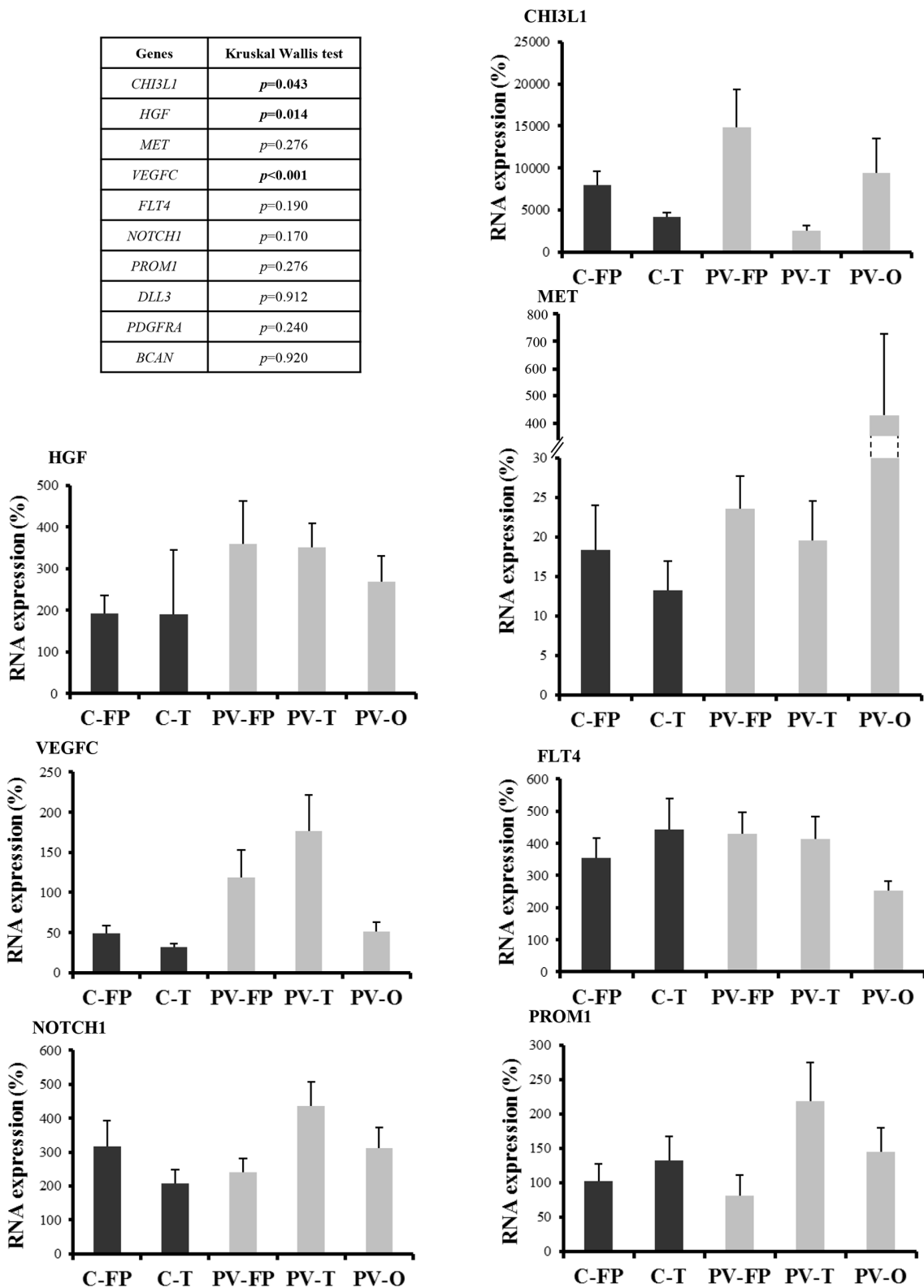
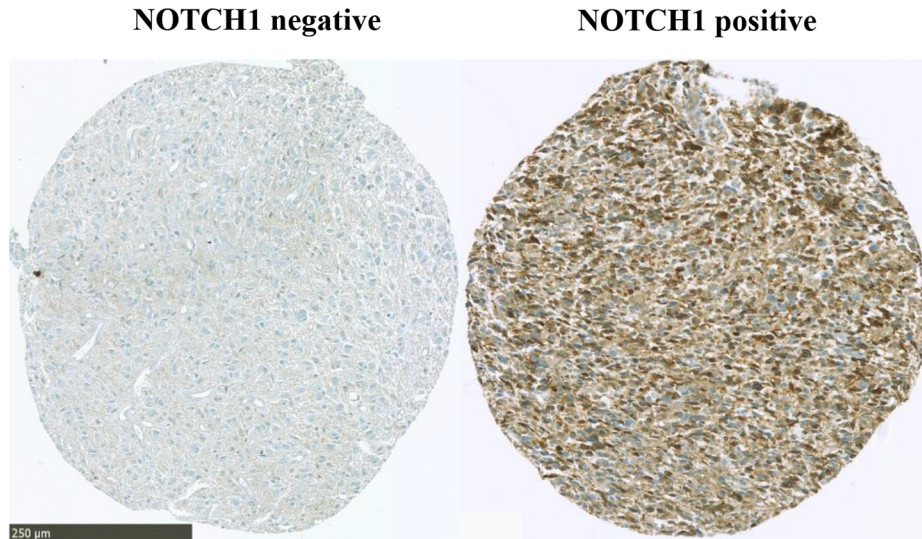


Figure 2: RNA expression profiles according to the five tumor locations. RNA expression was quantified by RT-qPCR. Expression levels were expressed as percentages of expression compared to adult human brain samples. Correlations between tumor locations and RNA expression profiles were analyzed using non-parametric Kruskal-Wallis test. Only RNA expression levels significantly different between the five glioblastoma locations were showed. *P*-values are given in the left panel. Abbreviations: Cortical fronto-parietal (C-FP), Cortical temporal (C-T), Periventricular fronto-parietal (PV-FP), Periventricular temporal (PV-T), Periventricular occipital (PV-O). Bars indicate the SEM.

A



B

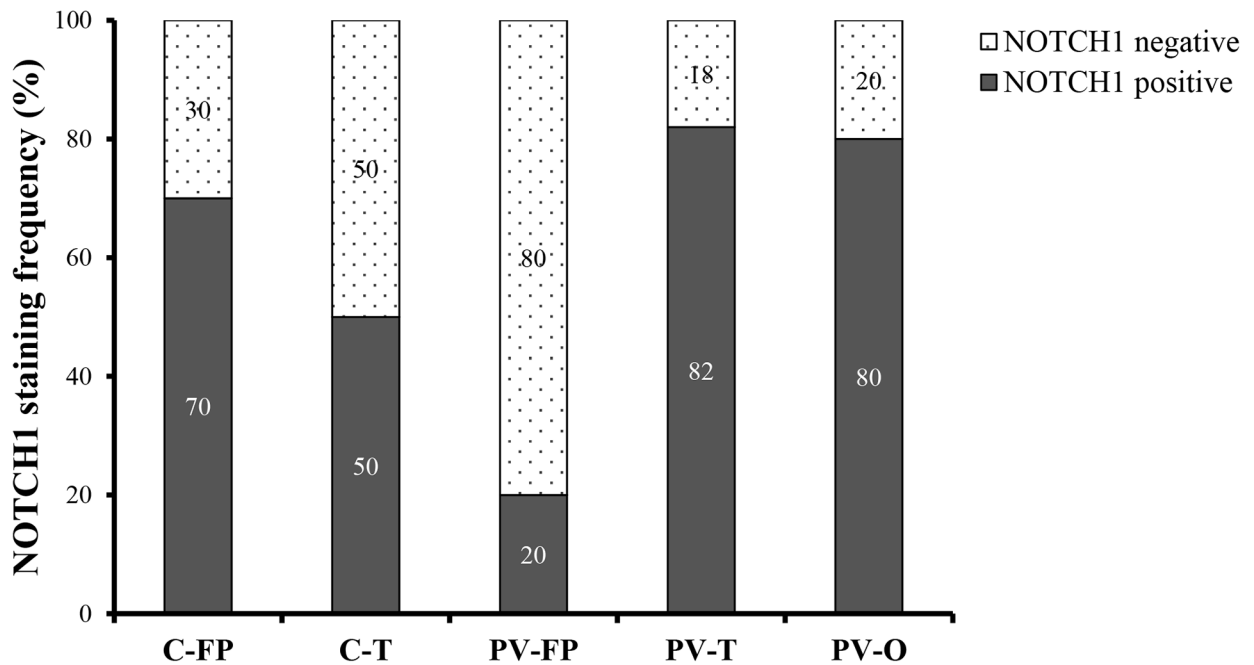


Figure 3: NOTCH1 expression according to the five tumor locations. A. NOTCH1 immunostaining was performed on TMA. Left: negative expression. Right: positive expression is seen mainly in cytoplasm and rarely in nucleus of the positive cells. Scale bar: 250 μm. B. NOTCH1 staining frequency (%) is represented in each five tumor locations. NOTCH1 positive tumors are predominant in PV-T location and NOTCH1 negative tumors in PV-FP location.

VEGFC expression. In addition, high *HGF* expression was observed in periventricular glioblastomas. Binding of HGF to its MET receptor triggers a series of intracellular signaling events leading to tumor cell proliferation, survival invasion and angiogenesis (for review see [26]). In our series, *MET* expression was not related to *HGF* expression and only two cases of the PV-O location exhibited highest mean *MET* value. In contrast to the four other locations, PV-T subtype expressed the proneural markers *PROM1* and *NOTCH1* at high levels. Moreover, *PROM1* (also known as *CD133*) is a well characterized CSC marker, although previous studies also report CSC properties in *CD133*⁻ cells [13]. Moreover, the NOTCH signaling pathway is known to maintain neural stem cells [27], and stimulate cell proliferation, cell differentiation, and tumorigenesis of glioma stem-like cells [28–30]. Therefore, high expression of these two markers suggests critical roles of *CD133*⁺ stem-like cells in the growth of this PV-T glioblastoma subtype. These results were supported by protein expression analysis of NOTCH1. Importantly, these PV-T tumors are close to the hippocampus, localized between the temporal lobe and the inferior horn of the lateral ventricle. Adult neurogenesis, initiated by neural stem cells, occurs in some specific brain areas such as the subgranular zone of the dentate gyrus of the hippocampus and the subventricular zone [31, 32]. Some recent studies revealed the presence of neural stem cells *CD133*⁺ in the adult murine hippocampus [33], and showed a potential relationship between NOTCH1 expression and neurogenesis in hippocampus [34, 35]. Interestingly, Han *et al.* [36] showed

that adult hippocampal neural stem cells expressed *VEGFC* and its receptor *FLT4*, which represent specific regulators of neural stem cells activation and neurogenesis in mammals.

In summary, periventricular glioblastomas differed from cortical glioblastomas, and periventricular tumors were a heterogeneous group with distinct subgroups based on molecular characteristics. In particular, in contrast with PV-FP and PV-O subtype, PV-T glioblastomas were characterized by a high expression of the mesenchymal marker *VEGFC* and the proneural and CSC markers *NOTCH1* and *PROM1* that could be potential targets for specific therapies. Whether these data suggest that glioblastomas from PV-T location derived from specific Glioma stem-like cells this remains to be demonstrated. Limited numbers of cases studied and intratumoral heterogeneity [37] indicate the requirement of further studies to support present observations.

MATERIALS AND METHODS

Patient selection and clinical data (Figure 5)

All patients referred to our institution were retrospectively included if they met the following criteria: adult patient (≥18 years old) at the time of glioblastoma diagnosis, available pre-surgery MRI and frozen tumor sample stored in the Assistance Publique-Hôpitaux de Marseille (AP-HM) tumor bank (authorization number AC-2013–1786). Patients with only pre-surgery CT scans or

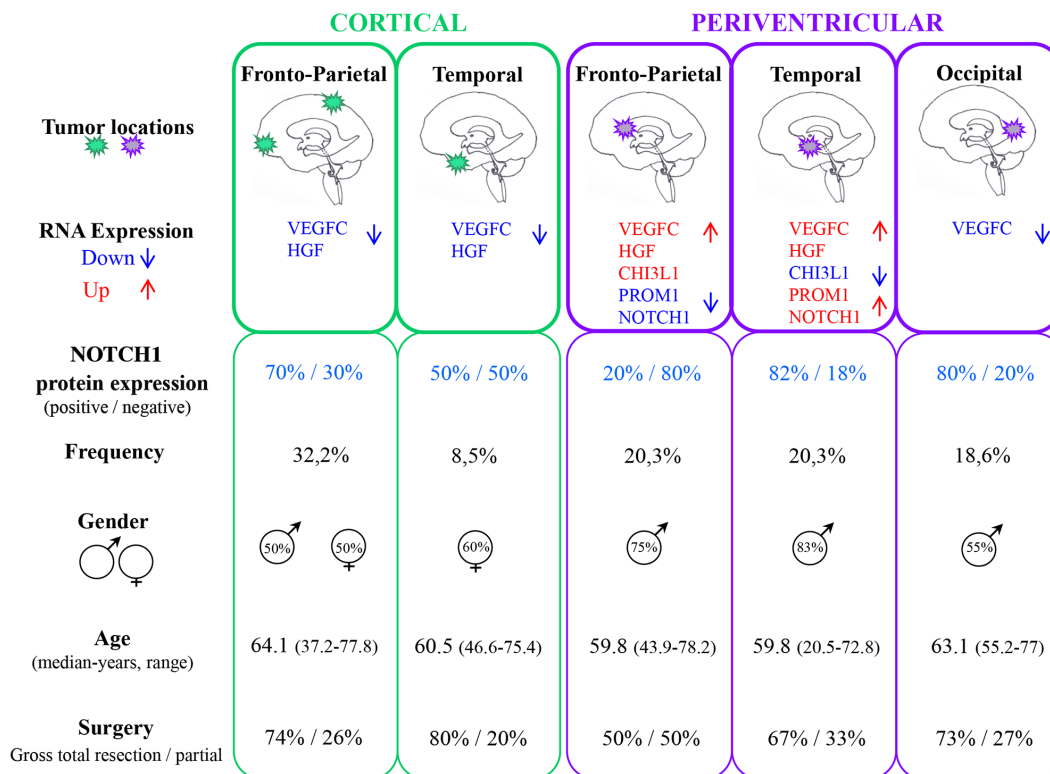


Figure 4: Main clinical and molecular features of the five tumor locations.

post-surgery MRI were not included. In order to analyze the correlation between tumor location and molecular profile, we excluded patients with multifocal lesions or with huge tumors with both cortical and ventricular involvement precluding initial location determination. Subsequently, gender, Karnofsky performance status (KPS) at diagnosis, extent of surgical resection, and adjuvant treatments were recorded for all included patients.

Tumor samples, immunohistochemical and molecular data

Tumor tissue samples were obtained at the time of initial surgical resection and after written consent, according to a protocol approved by the local institutional review board and ethics committee. Tumor samples were fixed in formalin and were paraffin-embedded, and separate samples were frozen in liquid nitrogen and stored in the AP-HM tumor bank until use. Glioblastomas were histologically diagnosed according to the 2007 World Health Organization classification [38], and histological review of frozen samples by a pathologist (DFB) confirmed that all samples were located in the core of the tumor lesion and contained only tumor tissue, although necrosis might account for up to 30% of samples. IDH1 R132H protein expressions were routinely analyzed

using immunohistochemistry and IDH1 R132H positive tumors were excluded. Genomic DNA was systematically extracted from frozen samples and *MGMT* promoter methylation and *EGFR* amplification status were evaluated as previously described (Figure 5) [39, 40].

Tumor location

Preoperative MRI was performed on at least three axes (sagittal, axial, and coronal) using T1 without gadolinium injection, T1 with gadolinium injection, and T2 or FLAIR sequences. MRI data were reviewed by three physicians (DFB, ET, PM) and tumors were classified into cortical (C) ($n = 24$) and periventricular (PV) ($n = 35$) locations. All periventricular tumors presented with T1 enhancement in contact with lateral ventricles. Tumors were then divided according to locations and predominant lobar involvements of fronto-parietal (FP), temporal (T), or occipital (O) regions. Cortical tumors included C-FP ($n = 19$) and C-T ($n = 5$), and no cortical-occipital tumors were identified in this series. Finally, periventricular tumors were divided into fronto-parietal location (PV-FP, $n = 12$), temporal horn location (PV-T, $n = 12$), and posterior occipital horn location (PV-O, $n = 11$) based on the cerebral lobe involvement and ventricular anatomy (Figure 5 and Figure 6).

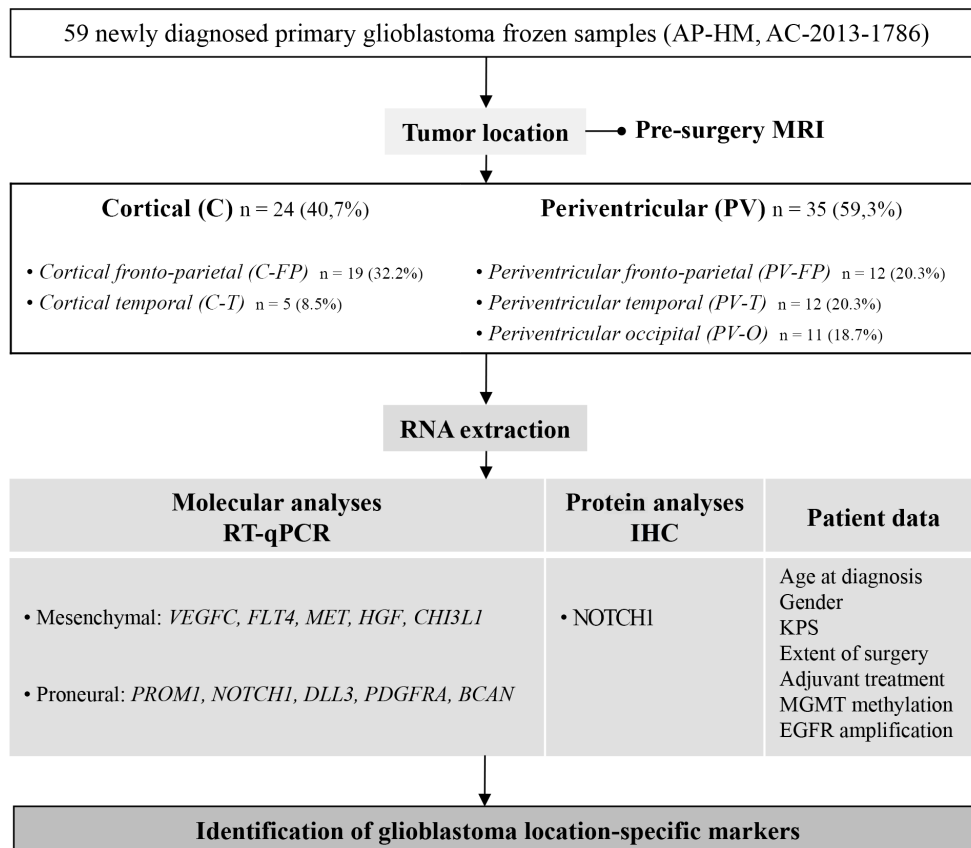


Figure 5: Study flow chart and objectives. Abbreviations: Immunohistochemistry (IHC), Karnofsky performance status (KPS), O(6)-Methylguanine-DNA methyltransferase (MGMT) and Epidermal growth factor receptor (EGFR).

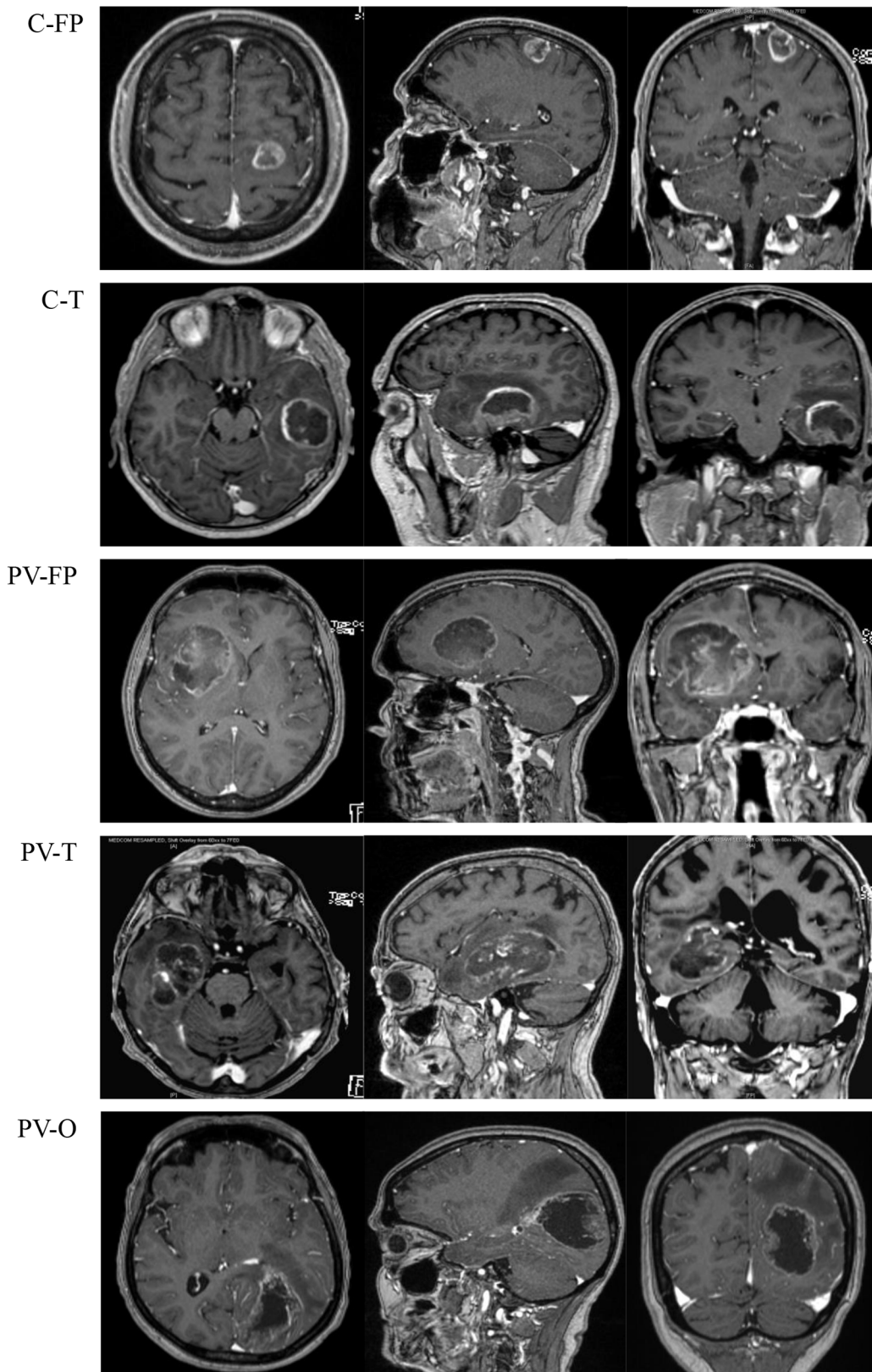


Figure 6: Magnetic resonance imaging with T1 enhancement (axial (left), sagittal (middle) and coronal (right)) of five tumor locations. Abbreviations: Cortical fronto-parietal (C-FP), Cortical temporal (C-T), Periventricular fronto-parietal (PV-FP), Periventricular temporal (PV-T), Periventricular occipital (PV-O).

RNA extraction

Total RNA was extracted from frozen tissues using TRI Reagent (Sigma- Aldrich, Paris, France) according to the manufacturer's instructions, and an improved version of the single-step total RNA isolation reagent developed by Chomczynski and Sacchi [41]. RNA samples were analyzed using a spectrophotometer (Nanodrop ND-1000 and Agilent 2100 bioanalyzer; Agilent Technologies, Massy, France). RNA samples with no evidence of ribosomal peak degradation and RIN values of 6–10 were used for real-time quantitative PCR analyses [42] after treatment with 1U ribonuclease-free deoxyribonuclease (Roche Applied Science, Meylan, France) at 37°C for 15 min.

Real-time quantitative PCR (RT-qPCR)

RNA samples were processed using a LightCycler 480 instrument (Roche Applied Science) and a LightCycler 480 SYBR Green I Master Mix (Roche Applied Science). Briefly, total DNA-free RNA (1 µg) was reverse-transcribed into cDNA using 1 µg of random hexamers and Superscript II reverse transcriptase as recommended by the manufacturer (Invitrogen Life Technologies, Cergy Pontoise, France). Measurements were performed in triplicate for each sample, and relative expression ratios of target gene transcripts (*VEGFC*, *FLT4*, *MET*, *HGF*, *CHI3L1*, *PROM1*, *NOTCH1*, *DLL3*, *PDGFRA*, and *BCAN*) and reference gene transcripts (*18S*, *GAPDH*, and *ACTB*) were calculated using qPCR efficiencies and cycle threshold (Ct) deviations of tumor and normal adult brain samples (control: Agilent Technologies) [43]. RNA expression levels in glioblastoma samples were subsequently expressed as percentages compared to normal adult human brain samples corresponding to 100% of expression. Forward and reverse primers used for each gene are listed in Supplementary Table S4.

Immunohistochemical analysis

Immunohistochemistry was performed on tissue microarrays (TMA) that were constructed from routinely processed formalin-fixed paraffin-embedded tumor material. Areas of viable and representative tumor following review of all blocks were marked by a pathologist (DFB) before inclusion in the TMA (3 x 0.6 mm cores for each tumor). TMA slides were simultaneously immunostained using Ventana Ultraview™ peroxidase system combined with the following primary antibody: anti-NOTCH1 (Abcam ab52627) [44]. NOTCH1 staining was scored negative or positive by two independent pathologists (DFB, DM).

Statistical analysis

Qualitative variables are presented as frequencies and percentages, and continuous variables are presented as means (with standard errors), medians, and ranges.

Correlations between tumor locations and RNA expression profiles or protein expression were analyzed using non-parametric Kruskal-Wallis and Mann-Whitney tests. The Chi-square test (or Fisher's exact test) was used to compare qualitative variables. Correlations between expression levels of molecular markers were evaluated using Spearman correlation coefficients. All reported *p*-values were two-sided, and differences were considered significant when *p* < 0.05. All statistical analyses were performed using PASW Statistics version 22.0 (IBM SPSS Inc., Chicago, IL, USA).

ACKNOWLEDGMENTS

We would like to thank the AP-HM tumor bank for providing frozen tissue samples (authorization number AC-2013-1786) and we are grateful to S. Tong and F. Frassinetti for their technical assistance and V. Gagna for her manuscript editing assistance.

CONFLICTS OF INTEREST

The authors declare that they have no competing financial interests.

GRANT SUPPORT

This work was supported by Institut National Contre le Cancer (grant INCa-DGOS-Inserm 6038), PACA Canceropole, the Groupement des Entreprises Françaises dans la Lutte contre le Cancer (GEFLUC) and institutional grants (Inserm, Aix-Marseille University). E. Denicolaï is supported by the Association pour la Recherche sur les Tumeurs Cérébrales-Sud (ARTC-Sud).

REFERENCES

1. Stupp R, Mason WP, van den Bent MJ, Weller M, Fisher B, Taphoorn MJ, Belanger K, Brandes AA, Marosi C, Bogdahn U, Curschmann J, Janzer RC, Ludwin SK, et al. Radiotherapy plus concomitant and adjuvant temozolomide for glioblastoma. *N Engl J Med*. 2005; 352:987–996.
2. Fine HA. Bevacizumab in glioblastoma—still much to learn. *N Engl J Med*. 2014; 370:764–765.
3. Chinot OL, Wick W, Mason W, Henriksson R, Saran F, Nishikawa R, Carpentier AF, Hoang-Xuan K, Kavan P, Cernea D, Brandes AA, Hilton M, Abrey L, et al. Bevacizumab plus radiotherapy-temozolomide for newly diagnosed glioblastoma. *N Engl J Med*. 2014; 370:709–722.
4. Karsy M, Huang T, Kleinman G, Karpel-Massler G. Molecular, histopathological, and genomic variants of glioblastoma. *Front Biosci (Landmark Ed)*. 2014; 19:1065–1087.
5. Goffart N, Kroonen J, Rogister B. Glioblastoma-initiating cells: relationship with neural stem cells and the micro-environment. *Cancers (Basel)*. 2013; 5:1049–1071.

6. Phillips HS, Kharbanda S, Chen R, Forrest WF, Soriano RH, Wu TD, Misra A, Nigro JM, Colman H, Soroceanu L, Williams PM, Modrusan Z, Feuerstein BG, et al. Molecular subclasses of high-grade glioma predict prognosis, delineate a pattern of disease progression, and resemble stages in neurogenesis. *Cancer Cell*. 2006; 9:157–173.
7. Cancer, Network GAR. Comprehensive genomic characterization defines human glioblastoma genes and core pathways. *Nature*. 2008; 455:1061–1068.
8. Verhaak RG, Hoadley KA, Purdom E, Wang V, Qi Y, Wilkerson MD, Miller CR, Ding L, Golub T, Mesirov JP, Alexe G, Lawrence M, O'Kelly M, et al. Integrated genomic analysis identifies clinically relevant subtypes of glioblastoma characterized by abnormalities in PDGFRA, IDH1, EGFR, and NF1. *Cancer Cell*. 2010; 17:98–110.
9. Brennan CW, Verhaak RG, McKenna A, Campos B, Noushmehr H, Salama SR, Zheng S, Chakravarty D, Sanborn JZ, Berman SH, Beroukhi R, Bernard B, Wu CJ, et al. The somatic genomic landscape of glioblastoma. *Cell*. 2013; 155:462–477.
10. Sturm D, Witt H, Hovestadt V, Khuong-Quang DA, Jones DT, Konermann C, Pfaff E, Tönjes M, Sill M, Bender S, Kool M, Zapatka M, Becker N, et al. Hotspot mutations in H3F3A and IDH1 define distinct epigenetic and biological subgroups of glioblastoma. *Cancer Cell*. 2012; 22:425–437.
11. Galli R, Binda E, Orfanelli U, Cipelletti B, Gritti A, De Vitis S, Fiocco R, Foroni C, Dimeco F, Vescovi A. Isolation and characterization of tumorigenic, stem-like neural precursors from human glioblastoma. *Cancer Res*. 2004; 64:7011–7021.
12. Zaidi HA, Kosztowski T, DiMeco F, Quiñones-Hinojosa A. Origins and clinical implications of the brain tumor stem cell hypothesis. *J Neurooncol*. 2009; 93:49–60.
13. Beier D, Hau P, Proescholdt M, Lohmeier A, Wischhusen J, Oefner PJ, Aigner L, Brawanski A, Bogdahn U, Beier CP. CD133(+) and CD133(-) glioblastoma-derived cancer stem cells show differential growth characteristics and molecular profiles. *Cancer Res*. 2007; 67:4010–4015.
14. Tchoghandjian A, Baeza N, Colin C, Cayre M, Metellus P, Beclin C, Ouafik L, Figarella-Branger D. A2B5 cells from human glioblastoma have cancer stem cell properties. *Brain Pathol*. 2010; 20:211–221.
15. Son MJ, Woolard K, Nam DH, Lee J, Fine HA. SSEA-1 is an enrichment marker for tumor-initiating cells in human glioblastoma. *Cell Stem Cell*. 2009; 4:440–452.
16. Dimov I, Tasić-Dimov D, Conić I, Stefanovic V. Glioblastoma multiforme stem cells. *ScientificWorldJournal*. 2011; 11:930–958.
17. Dahlrot RH, Hermansen SK, Hansen S, Kristensen BW. What is the clinical value of cancer stem cell markers in gliomas? *Int J Clin Exp Pathol*. 2013; 6:334–348.
18. Günther HS, Schmidt NO, Phillips HS, Kemming D, Kharbanda S, Soriano R, Modrusan Z, Meissner H, Westphal M, Lamszus K. Glioblastoma-derived stem cell-enriched cultures form distinct subgroups according to molecular and phenotypic criteria. *Oncogene*. 2008; 27:2897–2909.
19. Pollard SM, Yoshikawa K, Clarke ID, Danovi D, Stricker S, Russell R, Bayani J, Head R, Lee M, Bernstein M, Squire JA, Smith A, Dirks P. Glioma stem cell lines expanded in adherent culture have tumor-specific phenotypes and are suitable for chemical and genetic screens. *Cell Stem Cell*. 2009; 4:568–580.
20. Tchoghandjian A, Baeza-Kallee N, Beclin C, Metellus P, Colin C, Ducray F, Adélaïde J, Rougon G, Figarella-Branger D. Cortical and subventricular zone glioblastoma-derived stem-like cells display different molecular profiles and differential in vitro and in vivo properties. *Ann Surg Oncol*. 2012; 19 Suppl 3:S608–619.
21. Joo KM, Kim SY, Jin X, Song SY, Kong DS, Lee JI, Jeon JW, Kim MH, Kang BG, Jung Y, Jin J, Hong SC, Park WY, et al. Clinical and biological implications of CD133-positive and CD133-negative cells in glioblastomas. *Lab Invest*. 2008; 88:808–815.
22. Gutman DA, Cooper LA, Hwang SN, Holder CA, Gao J, Aurora TD, Dunn WD Jr, Scarpace L, Mikkelsen T, Jain R, Wintermark M, Jilwan M, Raghavan P, et al. MR imaging predictors of molecular profile and survival: multi-institutional study of the TCGA glioblastoma data set. *Radiology*. 2013; 267:560–569.
23. Joukov V, Pajusola K, Kaipainen A, Chilov D, Lahtinen I, Kukk E, Saksela O, Kalkkinen N, Alitalo K. A novel vascular endothelial growth factor, VEGF-C, is a ligand for the Flt4 (VEGFR-3) and KDR (VEGFR-2) receptor tyrosine kinases. *Embo J*. 1996; 15:290–298.
24. Xu Y, Zhong Z, Yuan J, Zhang Z, Wei Q, Song W, Chen H. Collaborative overexpression of matrix metalloproteinase-1 and vascular endothelial growth factor-C predicts adverse prognosis in patients with gliomas. *Cancer Epidemiol*. 2013; 37:697–702.
25. Lim DA, Cha S, Mayo MC, Chen MH, Keles E, VandenBerg S, Berger MS. Relationship of glioblastoma multiforme to neural stem cell regions predicts invasive and multifocal tumor phenotype. *Neuro Oncol*. 2007; 9:424–429.
26. Birchmeier C, Birchmeier W, Gherardi E, Vande Woude GF. Met, metastasis, motility and more. *Nat Rev Mol Cell Biol*. 2003; 4:915–925.
27. Kageyama R, Ohtsuka T, Hatakeyama J, Ohsawa R. Roles of bHLH genes in neural stem cell differentiation. *Exp Cell Res*. 2005; 306:343–348.
28. Kanamori M, Kawaguchi T, Nigro JM, Feuerstein BG, Berger MS, Miele L, Pieper RO. Contribution of Notch signaling activation to human glioblastoma multiforme. *J Neurosurg*. 2007; 106:417–427.
29. Purow BW, Haque RM, Noel MW, Su Q, Burdick MJ, Lee J, Sundaresan T, Pastorino S, Park JK, Mikolaenko I, Maric D, Eberhart CG, Fine HA. Expression of Notch-1

- and its ligands, Delta-like-1 and Jagged-1, is critical for glioma cell survival and proliferation. *Cancer Res.* 2005; 65:2353–2363.
30. Zhu TS, Costello MA, Talsma CE, Flack CG, Crowley JG, Hamm LL, He X, Hervey-Jumper SL, Heth JA, Muraszko KM, DiMeco F, Vescovi AL, Fan X. Endothelial cells create a stem cell niche in glioblastoma by providing NOTCH ligands that nurture self-renewal of cancer stem-like cells. *Cancer Res.* 2011; 71:6061–6072.
 31. Reynolds BA, Weiss S. Generation of neurons and astrocytes from isolated cells of the adult mammalian central nervous system. *Science.* 1992; 255:1707–1710.
 32. Eriksson PS, Perfilieva E, Björk-Eriksson T, Alborn AM, Nordborg C, Peterson DA, Gage FH. Neurogenesis in the adult human hippocampus. *Nat Med.* 1998; 4:1313–1317.
 33. Walker TL, Wierick A, Sykes AM, Waldau B, Corbeil D, Carmeliet P, Kempermann G. Prominin-1 allows prospective isolation of neural stem cells from the adult murine hippocampus. *J Neurosci.* 2013; 33:3010–3024
 34. Zhang K, Zhao T, Huang X, Wu LY, Wu K, Zhu LL, Fan M. Notch1 mediates postnatal neurogenesis in hippocampus enhanced by intermittent hypoxia. *Neurobiol Dis.* 2014; 64:66–78.
 35. Zhang Z, Gao F, Kang X, Li J, Zhang L, Dong W, Jin Z, Li F, Gao N, Cai X, Yang S, Zhang J, Ren X, et al. Exploring the potential relationship between Notch pathway genes expression and their promoter methylation in mice hippocampal neurogenesis. *Brain Res Bull.* 2015; 113:8–16.
 36. Han J, Calvo CF, Kang TH, Baker KL, Park JH, Parras C, Levittas M, Birba U, Pibouin-Fragner L, Fragner P, Bilguvar K, Duman RS, Nurmi H, et al. Vascular endothelial growth factor receptor 3 controls neural stem cell activation in mice and humans. *Cell Rep.* 2015; 10:1158–1172.
 37. Inda MM, Bonavia R, Seoane J. Glioblastoma multiforme: a look inside its heterogeneous nature. *Cancers (Basel).* 2014; 6:226–239.
 38. Louis DN, Ohgaki H, Wiestler OD, Cavenee WK, Burger PC, Jouvet A, Scheithauer BW, Kleihues P. The 2007 WHO classification of tumours of the central nervous system. *Acta Neuropathol.* 2007; 114:97–109.
 39. Metellus P, Coulibaly B, Nanni I, Fina F, Eudes N, Giorgi R, Barrie M, Chinot O, Fuentes S, Dufour H, Ouafik L, Figarella-Branger D. Prognostic impact of O6-methylguanine-DNA methyltransferase silencing in patients with recurrent glioblastoma multiforme who undergo surgery and carmustine wafer implantation: a prospective patient cohort. *Cancer.* 2009; 115:4783–4794.
 40. Coulibaly B, Nanni I, Quilichini B, Gaudart J, Metellus P, Fina F, Boucard C, Chinot O, Ouafik L, Figarella-Branger D. Epidermal growth factor receptor in glioblastomas: correlation between gene copy number and protein expression. *Hum Pathol.* 2010; 41:815–823.
 41. Chomczynski P, Sacchi N. Single-step method of RNA isolation by acid guanidinium thiocyanate-phenol-chloroform extraction. *Anal Biochem.* 1987; 162:156–159.
 42. Schroeder A, Mueller O, Stocker S, Salowsky R, Leiber M, Gassmann M, Lightfoot S, Menzel W, Granzow M, Ragg T. The RIN: an RNA integrity number for assigning integrity values to RNA measurements. *BMC Mol Biol.* 2006; 7:3.
 43. Pfaffl MW. A new mathematical model for relative quantification in real-time RT-PCR. *Nucleic Acids Res.* 2001; 29:e45.
 44. Moutal A, Honnorat J, Massoma P, Désormeaux P, Bertrand C, Malleval C, Watrin C, Chounlamountri N, Mayeur ME, Besançon R, Naudet N, Magadoux L, Khanna R, et al. CRMP5 Controls Glioblastoma Cell Proliferation and Survival through Notch-Dependent Signaling. *Cancer Res.* 2015; 75:3519–3528.