



## Responses of *Ottelia alismoides*, an aquatic plant with three CCMs, to variable CO<sub>2</sub> and light

Hui Shao, Brigitte Gontero, Stephen C. Maberly, Hong Sheng Jiang, Yu Cao, Wei Li, Wen Min Huang

### ► To cite this version:

Hui Shao, Brigitte Gontero, Stephen C. Maberly, Hong Sheng Jiang, Yu Cao, et al.. Responses of *Ottelia alismoides*, an aquatic plant with three CCMs, to variable CO<sub>2</sub> and light. *Journal of Experimental Botany*, 2017, 68 (14), pp.3985 - 3995. 10.1093/jxb/erx064 . hal-01535902

**HAL Id: hal-01535902**

**<https://amu.hal.science/hal-01535902>**

Submitted on 16 Apr 2018

**HAL** is a multi-disciplinary open access archive for the deposit and dissemination of scientific research documents, whether they are published or not. The documents may come from teaching and research institutions in France or abroad, or from public or private research centers.

L'archive ouverte pluridisciplinaire **HAL**, est destinée au dépôt et à la diffusion de documents scientifiques de niveau recherche, publiés ou non, émanant des établissements d'enseignement et de recherche français ou étrangers, des laboratoires publics ou privés.



RESEARCH PAPER

# Responses of *Ottelia alismoides*, an aquatic plant with three CCMs, to variable CO<sub>2</sub> and light

Hui Shao<sup>1</sup>, Brigitte Gontero<sup>2</sup>, Stephen C. Maberly<sup>3</sup>, Hong Sheng Jiang<sup>1,2</sup>, Yu Cao<sup>1,4</sup>, Wei Li<sup>1,4</sup> and Wen Min Huang<sup>1,4,\*</sup>

<sup>1</sup> Key Laboratory of Aquatic Botany and Watershed Ecology, Wuhan Botanical Garden, Chinese Academy of Sciences, Wuhan 430074, China

<sup>2</sup> Aix Marseille Univ CNRS, BIP UMR 7281, IMM, FR 3479, 31 Chemin Joseph Aiguier, 13402 Marseille Cedex 20, France

<sup>3</sup> Lake Ecosystems Group, Centre for Ecology & Hydrology, Lancaster Environment Centre, Bailrigg, Lancaster LA1 4AP, UK

<sup>4</sup> Hubei Key Laboratory of Wetland Evolution & Ecological Restoration, Wuhan Botanical Garden, Chinese Academy of Sciences, Wuhan, 430074, China

\* Correspondence: [huangwm@wbcas.cn](mailto:huangwm@wbcas.cn)

Received 14 November 2016; Editorial decision 3 February 2017; Accepted 3 February 2017

Editor: Howard Griffiths, University of Cambridge

## Abstract

*Ottelia alismoides* is a constitutive C<sub>4</sub> plant and bicarbonate user, and has facultative crassulacean acid metabolism (CAM) at low CO<sub>2</sub>. Acclimation to a factorial combination of light and CO<sub>2</sub> showed that the ratio of phosphoenolpyruvate carboxylase (PEPC) to ribulose-bisphosphate carboxylase/oxygenase (Rubisco) (>5) is in the range of that of C<sub>4</sub> plants. This and short-term response experiments showed that the activity of PEPC and pyruvate phosphate dikinase (PPDK) was high even at the end of the night, consistent with night-time acid accumulation and daytime carbon fixation. The diel acidity change was maximal at high light and low CO<sub>2</sub> at 17–25 µequiv g<sup>-1</sup> FW. Decarboxylation proceeded at ~2–3 µequiv g<sup>-1</sup> FW h<sup>-1</sup>, starting at the beginning of the photoperiod, but did not occur at high CO<sub>2</sub>; the rate was greater at high, compared with low light. There was an inverse relationship between starch formation and acidity loss. Acidity changes account for up to 21% of starch production and stimulate early morning photosynthesis, but night-time accumulation of acid traps <6% of respiratory carbon release. *Ottelia alismoides* is the only known species to operate CAM and C<sub>4</sub> in the same tissue, and one of only two known aquatic species to operate CAM and bicarbonate use.

**Key words:** Aquatic plant, C<sub>4</sub>, CAM, CCMs, PEPC, photosynthesis, PPDK, Rubisco, starch.

## Introduction

In terrestrial environments, some photoautotrophic plants have evolved carbon dioxide-concentrating mechanisms (CCMs), such as C<sub>4</sub> and crassulacean acid metabolism (CAM), that allow them to maximize carbon uptake when temperature is high or water restricted, or both (Keeley and Rundel,

2003; Herrera, 2009; Silvera *et al.*, 2010; Sage *et al.*, 2012). In contrast, freshwater plants have CCMs that overcome the problem of limited inorganic carbon supply which arises from several factors (Madsen and Maberly, 1991; Vadstrup and Madsen, 1995; Maberly and Madsen, 2002). First, the

rate of CO<sub>2</sub> diffusion in water is ~10 000 times lower than in air, limiting the rate of transport of CO<sub>2</sub> into freshwater plants through the external boundary layer (Raven, 1970; Black et al., 1981; Maberly, 2014). Consequently, the CO<sub>2</sub> concentration required to half-saturate the net photosynthesis of freshwater plants is ~8–14 times greater than air equilibrium (Maberly and Madsen, 1998). Secondly, in productive systems, the concentration of CO<sub>2</sub> can be depleted close to zero when the demand for inorganic carbon by community photosynthesis exceeds the supply from the atmosphere, the catchment, and heterotrophic regions such as sediments.

In addition, freshwater plants have evolved a diversity of strategies that counter CO<sub>2</sub> limitation (Klavsén et al., 2011). Physiological or biochemical strategies involve CCMs because they increase the concentration of CO<sub>2</sub> around the active site of ribulose-bisphosphate carboxylase/oxygenase (Rubisco) (Bowes and Salvucci, 1989; Maberly and Madsen, 2002; Raven et al., 2008). The most frequent CCM in freshwater plants is based on the biophysical uptake of bicarbonate, which is found in >50% of tested species (Maberly and Madsen, 2002). In addition, the two biochemical CCMs in terrestrial plants, C<sub>4</sub> and CAM, are also found in freshwater plants. Both depend on carbon fixation via the enzyme phosphoenolpyruvate carboxylase (PEPC) that is active during either the day (C<sub>4</sub>) or the night (CAM) (Keeley, 1981; Bowes and Salvucci, 1989; Bowes et al., 2002; Keeley and Rundel, 2003).

The C<sub>4</sub> pathway in freshwater plants is analogous to that in terrestrial C<sub>4</sub> plants, and the percentage of species with this syndrome in both systems is ~3% (Zhang et al., 2014). In freshwater plants, C<sub>4</sub> metabolism has been observed in *Hydrilla verticillata*, *Egeria densa*, and *Ottelia alismoides* from the Hydrocharitaceae, and in some other species including *Sagittaria subulata* from the Alismataceae, the grasses *Orcuttia californica* and *O. viscida*, and the sedge *Eleocharis acicularis* (Bowes and Salvucci, 1989; Madsen and Sand-Jensen, 1991; Keeley, 1998a; Casati et al., 2000; Zhang et al., 2014). In most terrestrial C<sub>4</sub> plants, PEPC and Rubisco are located in different cells, but some species from the Chenopodiaceae, in saline semi-deserts, operate single-cell C<sub>4</sub> photosynthesis (Voznesenskaya et al., 2001). In freshwater plants, C<sub>4</sub> occurs within a single cell in the few plants studied (Bowes, 2011). Terrestrial C<sub>4</sub> is generally constitutive, while it is facultative in *H. verticillata* and *E. densa*, being induced when inorganic carbon is limiting (Van et al., 1976; Reiskind et al., 1997; Casati et al., 2000). In contrast, it is constitutive in *O. alismoides* (Zhang et al., 2014).

The CAM pathway enables plants to fix CO<sub>2</sub> at night via PEPC and store it as malic acid in the vacuole. During the day, malic acid is decarboxylated and the released CO<sub>2</sub> is fixed by Rubisco, entering the Calvin–Benson cycle (Cushman and Bohnert, 1999; Nimmo, 2000). The frequency of species with CAM in terrestrial and freshwater environments is ~6% (Zhang et al., 2014). Freshwater CAM plants have been observed in the following genera: *Crassula*, *Deinostema*, *Isoetes*, *Littorella*, *Ottelia*, *Sagittaria*, and *Vallisneria* (Keeley, 1981, 1982, 1998b; Aulio, 1986; Klavsén et al., 2011; Pedersen et al., 2011; Zhang et al., 2014; Yang and Liu, 2015; Yin et al., 2017). Unlike terrestrial CAM plants where stomatal closure

suppresses CO<sub>2</sub> uptake during the day, daytime uptake of exogenous CO<sub>2</sub> can occur in freshwater plants, allowing them to assimilate exogenous CO<sub>2</sub> continuously (Keeley, 1998b; Madsen et al., 2002). The expanded time scale for inorganic carbon uptake enhances the daily carbon supply and facilitates the recapture of respired CO<sub>2</sub> at night.

CAM metabolism is a plastic process in freshwater plants (Bowes and Salvucci, 1989). Regulation can involve long-term acclimation (over weeks or months) or short-term exposure (over a 24 h cycle) to environmental change, including variation in water, light, CO<sub>2</sub>, temperature, and nutrients (Keeley et al., 1983; Aulio, 1985; Madsen, 1987; Robe and Griffiths, 1990; Hostrup and Wiegand, 1991; Klavsén and Maberly, 2010). CAM activity is dependent on the interactions among these environmental variables and particularly light (Robe and Griffiths, 1990; Rattray et al., 1992) and CO<sub>2</sub> (Richardson et al., 1984; Zhang et al., 2014).

*Ottelia alismoides* is a member of the Hydrocharitaceae, and, perhaps uniquely, has three CCMs: use of bicarbonate and C<sub>4</sub> metabolism that are constitutive, and CAM that is facultative (Zhang et al., 2014). This raises the question of how these three CCMs interact and are regulated over different time scales, especially in response to variable CO<sub>2</sub> and light. The aims of this study were: (i) to investigate the long-term regulation of inorganic carbon uptake in *O. alismoides*, including the interactive effects on C<sub>4</sub> and CAM, in response to variable light and CO<sub>2</sub> concentration; and (ii) to assess the short-term effect of changes in light and CO<sub>2</sub> on the daily CAM cycle.

## Materials and methods

### Plant material

*Ottelia alismoides* that had been collected from Yunnan Province, China, was cultivated in a greenhouse at the Wuhan Botanical Garden for several years. Seeds from these plants were sown in six plastic containers (10 × 10 × 10 cm) filled with 5 cm of soil from nearby Donghu Lake and covered with 3 cm of sterile tap water. The containers were placed in a growth chamber at 25 °C and the water was replaced completely each day to maintain constant conditions. After several days, the seeds began to germinate and, after 6 weeks, when the seedlings were ~8 cm tall, two or three plants were transplanted into a plant pot (15 cm diameter, 12 cm high) containing the same soil. Nineteen pots were placed in a tank containing ~400 litres of tap water located in a glasshouse on the flat roof of the laboratory. The tap water was replaced every 2 d and the water surface gradually increased as the plants grew. Snails and moribund leaves were removed daily. The plants were grown at ambient (high) light without shading and, because of their high biomass, they generated high pH values and low concentrations of CO<sub>2</sub>. After ~4–5 weeks, plants of similar height (~25–30 cm) were selected for the experiments, in July and August 2015.

### Acclimation to light and CO<sub>2</sub>

Pots of *O. alismoides* plants from the glasshouse were placed in white plastic buckets (25 × 25 × 35 cm) containing ~20 litres of tap water; two pots per bucket. Sixteen buckets were placed in a constant temperature room at 25 ± 2 °C and were illuminated with FSL T5/865 28 W fluorescence tubes on a 14 h light (08.00–22.00 h), 10 h dark photoperiod. The tap water was renewed twice a week. The plants were grown at two CO<sub>2</sub> concentrations. A low CO<sub>2</sub> concentration was produced by the natural photosynthetic activity of the

plants which depleted the inorganic carbon concentration of the water, and increased the pH (from 8.32 to >9.0), with a CO<sub>2</sub> concentration range of ~0.3–85 µmol l<sup>-1</sup> and a mean of 11 µmol l<sup>-1</sup>. The high CO<sub>2</sub> concentration was produced by adding CO<sub>2</sub>-saturated tap water to the buckets twice each day to reduce the pH to between 6.8 and 7.0, which generated on average 405 µmol l<sup>-1</sup>. The corresponding CO<sub>2</sub> concentration over the whole growth period was between 136 µmol l<sup>-1</sup> and 455 µmol l<sup>-1</sup>, with a mean of 286 µmol l<sup>-1</sup>. The buckets were gently stirred to mix the water before measurement and after each addition of CO<sub>2</sub> solution. The buckets were covered with neutral-density shading material that produced a low level of light 25–30 µmol photon m<sup>-2</sup> s<sup>-1</sup>, photosynthetically active radiation [PAR; Li-Cor underwater sensor (UWQ) connected to a Li-Cor LI-1400 data logger]. Alkalinity was measured every 2 d, and pH was measured every day (see methods below). Four days before the measurements, half the plants at high and low CO<sub>2</sub> were exposed to a moderately high light at 150–165 µmol photon m<sup>-2</sup> s<sup>-1</sup> by removing the neutral-density shading material. There were therefore four treatments: high light and high CO<sub>2</sub> (HLHC), high light and low CO<sub>2</sub> (HLLC), low light and high CO<sub>2</sub> (LLHC), and low light and low CO<sub>2</sub> (LLLC), with the CO<sub>2</sub> treatment lasting for 18 d and the high light treatment lasting for 4 d.

Whole leaves were collected at 07.30 h (just before the start of the photoperiod), 14.00 h, and 21.00 h (at the end of the photoperiod). Leaves grown at low concentrations of CO<sub>2</sub> tended to have a layer of marl on the upper surface which was gently removed by rubbing. Leaves were immediately placed on aluminium foil on top of ice in a polystyrene box and kept in the dark to reduce metabolic changes. Three leaves per treatment were collected on each occasion from different plants in two or three different tanks. Each whole leaf was photographed, blotted gently with paper towels, and quickly weighed to determine the fresh weight. Each leaf was then cut in half down the mid-rib; one half was used for the determination of starch and photosynthesis enzymes, the other half for the determination of acidity. Each part of the leaf was photographed, placed in a pre-weighed foil envelope, weighed, and placed on ice. The procedure for processing 48 leaves took ~50 min. The foil envelopes containing the samples were stored in liquid nitrogen for later determination of acidity, starch, and enzyme activities.

#### *Response to short-term exposure to high CO<sub>2</sub>*

Sixteen plants from the greenhouse, grown at high light and low CO<sub>2</sub>, were transferred in the early evening to the buckets and placed in the constant temperature room in tap water at high light (180 µmol photon m<sup>-2</sup> s<sup>-1</sup>). Of the eight buckets, CO<sub>2</sub>-saturated tap water was added to four to produce high concentrations of CO<sub>2</sub> (HC) as described above, while four tanks were untreated to retain a low concentration of CO<sub>2</sub> (LC). The next day, whole leaves were collected just before 08.00 h (the start of the photoperiod), 10.00, 12.00, 14.00, 17.00, and 20.00 h (1 h before the end of the photoperiod). Three leaves per treatment were kept on ice and treated as above, except that a piece of the leaf was also used to measure rates of oxygen exchange. Chlorophyll content and fluorescence yield were also measured as described below.

#### *Response to short-term exposure to light and to different CO<sub>2</sub> concentrations at night*

Plants of *O. alismoides*, collected from the glasshouse at high light and low carbon, were placed in the growth room overnight and then exposed during the day to a photon irradiance of 150 µmol photon m<sup>-2</sup> s<sup>-1</sup> (HL treatment) and 15 µmol photon m<sup>-2</sup> s<sup>-1</sup> (LL treatment), both at low carbon. Leaves were collected as before in triplicate at 08.00, 12.00, 16.00, and 20.00 h, and stored in liquid nitrogen. During the subsequent night, the remaining plants from the two light treatments were incubated at two different CO<sub>2</sub> concentrations (low or high CO<sub>2</sub>, produced as before) in the dark for 10 h. Three leaves per treatment were harvested at 07.30 h, before the onset of

light, and stored in liquid nitrogen. Leaves were analysed for acidity, starch, malic acid, and enzyme activities.

#### *Measurement of acidity*

Acidity was detected as described previously (Zhang *et al.*, 2014). Briefly, 10 ml of CO<sub>2</sub>-free milliQ water was added to a known fresh weight of leaves (0.2–0.5 g) that had been stored in liquid nitrogen and then boiled for 30 min. Acidity was measured by titration of the sample with 0.01 N NaOH to an endpoint of pH 8.3.

#### *Measurement of malic acid*

A known fresh weight of frozen leaves (~0.4 g) was homogenized in 3 ml of ice-cold 0.6 N perchloric acid. The extract was centrifuged at 12 000 g for 10 min at 4 °C. The supernatant was neutralized with 5 mol l<sup>-1</sup> K<sub>2</sub>CO<sub>3</sub>, centrifuged again, and assayed for malic acid following Delhaize *et al.* (1993).

#### *Measurement of starch*

A known fresh weight of frozen leaves (~0.5 g) was homogenized in 5 ml of 80% ethanol. The homogenate was boiled for 3 min and centrifuged at 6000 g for 10 min at room temperature. The pellet was washed with 80% ethanol and this was repeated until the solution was colourless. The pellet was boiled for 10 min and, after cooling, 0.5 ml of 0.2 M Na acetate (pH 5.5) was added and the starch concentration was determined by the amyloglucosidase assay (Smith and Zeeman, 2006).

#### *Measurement of enzyme activities*

The extraction and assay of PEPC, Rubisco, and pyruvate phosphate dikinase (PPDK) were based on the methods described previously (Zhang *et al.*, 2014). All these enzyme activities were assessed from the rate of appearance or disappearance of NADH at 340 nm at 25 °C measured using a microplate reader (Tecan M200 PRO, Austria).

#### *Measurement of chlorophyll, dry weight, and leaf area*

About 0.1 g FW of leaf was extracted in 5 ml or 10 ml of ethanol and left overnight at 4 °C or boiled until the leaves were colourless, before measuring absorbance with a spectrophotometer at 649, 665, and 750 nm. Concentrations of Chl *a* and *b* were calculated using equations in Brain and Solomon (2007). Dry weight was measured after the leaves from HLLC in the glasshouse were dried for 48 h at 80 °C. Projected (one-sided) leaf area was calculated from digital photographs using AreaAna software (Huazhong University of Sciences and Technology, China), using squares of known area as reference.

#### *Measurement of pH and alkalinity*

The alkalinity in the solution was measured by Gran titration with a standard solution of HCl. pH was measured with a combination pH electrode (E-201F, Shanghai Electronics Science Instrument Co., China) connected to a Thermo Orion Dual Star Benchtop pH/ISE Meter.

#### *Measurement of fluorescence yield*

Fluorescence was recorded on six replicate leaves with a chlorophyll fluorometer (PAM-win, Walz, Germany) with a leaf clip attachment. The maximal photochemical efficiency of PSII ( $F_v/F_m$ ) was measured 10 min before the start of the photoperiod, and subsequently yield (the actual photochemical efficiency of PSII) was measured immediately after illumination and every 5 min thereafter for the first hour.  $F_v/F_m$  and the yield were obtained using the Win Control (3.25) software.

### Oxygen exchange

Oxygen exchange was measured with an optical oxygen electrode (Unisense OX-13298 and a Unisense microsensor multimeter Version 2.01) in a glass and Perspex chamber with a volume of 62 ml. A magnetic stirring bar at the base of the chamber, activated by an external motor, produced a steady flow of water around the chamber. The chamber was placed in a constant temperature water bath at 25 °C and illuminated from the side by fluorescent tubes (36 W, 6500 K colour temperature) that produced a photon irradiance (PAR) of 115  $\mu\text{mol photon m}^{-2} \text{s}^{-1}$ . The oxygen electrode was calibrated in the chamber with tap water (alkalinity  $\sim 1.8 \text{ mequiv l}^{-1}$ ) that had been vigorously bubbled with air from outside the laboratory (100% saturation) and in tap water that had been vigorously bubbled with nitrogen (0% saturation). Leaves with an average FW of  $\sim 0.4 \text{ g}$  and a projected area of  $\sim 28 \text{ cm}^2$  were rinsed in tap water and placed in the chamber with tap water that had been bubbled with outside air and then bubbled with nitrogen for a few seconds to reduce the oxygen concentration. The concentration of  $\text{CO}_2$  at air equilibrium was calculated to be  $14 \mu\text{mol l}^{-1}$  for an assumed outside air  $\text{CO}_2$  of 400 ppm. Tap water that had been bubbled vigorously with pure  $\text{CO}_2$  at 25 °C was calculated to have a  $\text{CO}_2$  concentration of  $34.13 \text{ mmol l}^{-1}$ . Small volumes of this solution were added to produce  $100 \mu\text{mol l}^{-1} \text{CO}_2$  (0.16 ml), followed by  $625 \mu\text{mol l}^{-1} \text{CO}_2$  (0.97 ml). Rates of oxygen change were recorded for 5–10 min for each  $\text{CO}_2$  concentration. At the end of the measurement of photosynthesis, the chamber was placed in the dark and the decline in oxygen concentration was followed for  $\sim 15 \text{ min}$ .  $\text{O}_2$  concentrations were recorded on a laptop connected to the Unisense meter, and rates of photosynthesis were calculated by linear regression in Microsoft Excel.

### Statistical analysis

All data presented in this study are the average  $\pm \text{SD}$ . The data were analysed using SPSS 16.0 (SPSS Inc., Chicago, IL, USA). Treatment and time significance were determined with two-way and one-way ANOVA, and means denoted by different letters were significantly different at  $P < 0.05$  based on Duncan's and Tukey's post-hoc tests.

## Results

### $\text{CO}_2$ concentrations based on pH and alkalinity

The high and low carbon treatments produced very different  $\text{CO}_2$  concentrations. Over the whole set of experiments, the average  $\text{CO}_2$  concentration was  $286 \mu\text{mol l}^{-1}$  in the HC and  $11 \mu\text{mol l}^{-1}$  in the LC treatment. There was no consistent diurnal pattern at HC, but at LC in the frequent measurements involved in the short-term responses to  $\text{CO}_2$  (below) the concentration of  $\text{CO}_2$  was  $3.1 \mu\text{mol l}^{-1}$  at the start of the photoperiod and  $0.6 \mu\text{mol l}^{-1}$  at the end. The concentration of  $\text{HCO}_3^-$  in this experiment was  $1.81 \text{ mmol l}^{-1}$  in the HC treatment and fell from  $0.47 \text{ mmol l}^{-1}$  to  $0.39 \text{ mmol l}^{-1}$  during the day in the LC treatment.

### Acclimation to light and $\text{CO}_2$

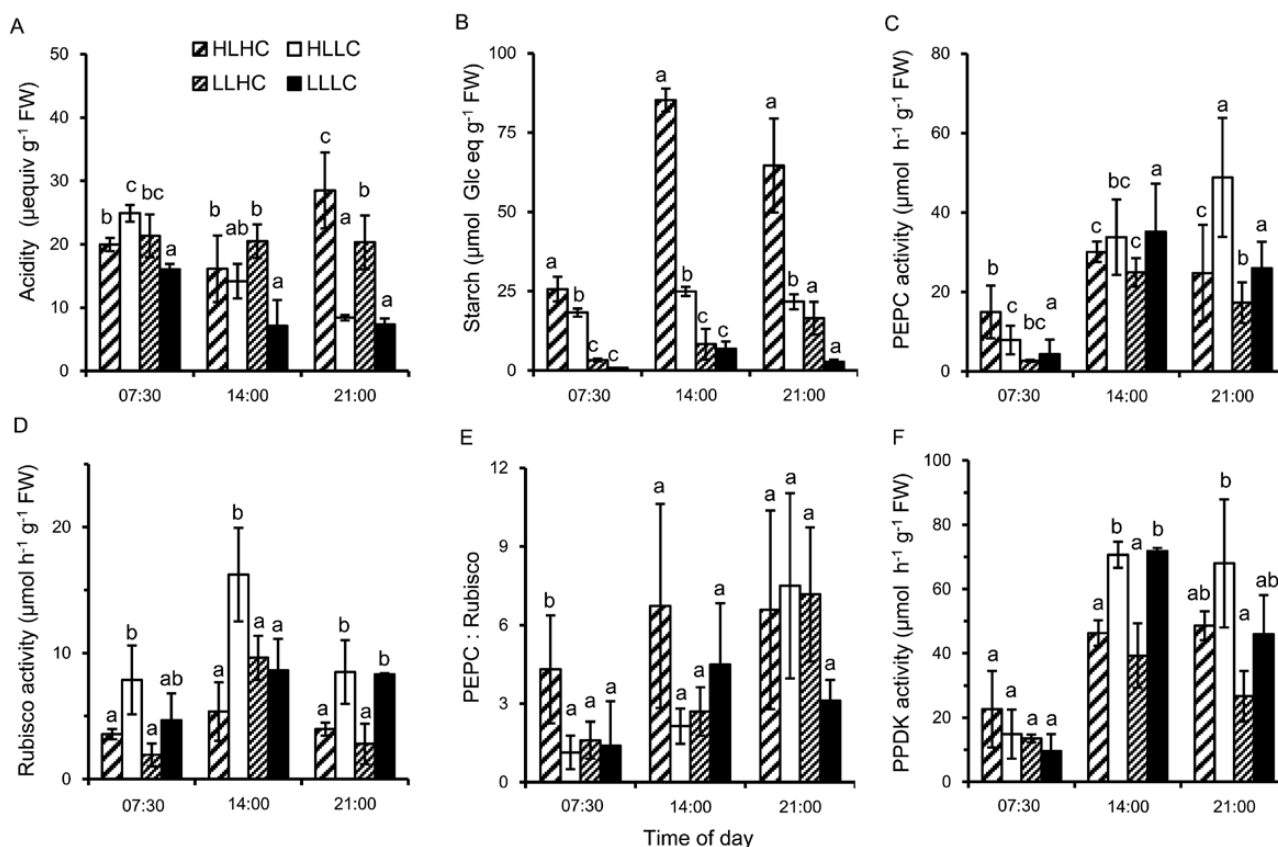
Biochemical and physiological properties of *O. alismoides* were compared after acclimation to low and high carbon (LC and HC) for 18 d and to low and high light (LL and HL) for the final 4 d. Night-time levels of acidity were similar across the treatments, varying between  $17 \mu\text{equiv g}^{-1} \text{FW}$  and  $25 \mu\text{equiv g}^{-1} \text{FW}$  (Fig. 1A). The average ratio of dry to fresh weight was 0.062 (SD is 0.007,  $n=25$ ) so the acidity is equivalent to  $1 \mu\text{equiv g}^{-1} \text{DW}$  and  $1.55 \mu\text{equiv g}^{-1} \text{DW}$ . In the LC plants,

there was a diel change in acidity of  $17 \mu\text{equiv g}^{-1} \text{FW}$  at HL and  $9 \mu\text{equiv g}^{-1} \text{FW}$  at LL, suggesting that CAM activity was present. In contrast, there was no diel change in acidity in the HC plants at HL or LL, because of a lack of decarboxylation, signifying the absence of CAM. High or low light did not affect the pattern of change, but the magnitude of change was lower in the LLLC plants than in the HLLC plants. An ANOVA consequently showed highly significant effects on acidity content of treatment and time of day, and there was an interaction between the two factors (see Supplementary Table S1 at JXB online). Starch content was lowest at the end of the night and increased during the day, and on average was statistically highest in the HLHC plants and statistically lowest in the LLLC plants (Fig. 1B; Supplementary Table S1). The activity of PEPC was lowest at the end of the night and highest during the day (Fig. 1C). Daytime PEPC activities were between  $20 \mu\text{mol g}^{-1} \text{FW h}^{-1}$  and  $50 \mu\text{mol g}^{-1} \text{FW h}^{-1}$ , and similar across treatments (Supplementary Table S1). Rubisco activity tended to be higher in the middle than at the start and the end of the day (Fig. 1D).

Surprisingly, in plants acclimated to HLHC, the PEPC:Rubisco ratios were always  $>4$  (Fig. 1E). In plants from the LC treatment, the PEPC:Rubisco ratio was 1 at the end of the night and increased to 6 by the end of the day for HL and to 3 for LL. In all the treatments, the activity of PPDK increased during the day, but the activity was lower in the HC than in the LC plants (Fig. 1F). There was a close relationship between the activity of PPDK and PEPC: on average, the activity of PPDK was 1.2 times greater than that of PEPC [linear regression:  $\text{PPDK} = 1.23 \times (\text{PEPC}) + 12.1$ ;  $R^2 = 0.62$ ,  $P < 0.001$ ].

### Response to short-term exposure to high $\text{CO}_2$

Plants that were acclimated to high light and low  $\text{CO}_2$  were then exposed overnight to high and low  $\text{CO}_2$  at high light giving two treatments, HLLC and HLHC. The diel change in acidity was  $\sim 20 \mu\text{equiv g}^{-1} \text{FW h}^{-1}$  in plants kept either at LC or at HC (Fig. 2A). In both treatments, decarboxylation began immediately at the start of the photoperiod at a rate of  $2\text{--}3 \mu\text{equiv g}^{-1} \text{FW h}^{-1}$ , and was largely complete by 14.00 h. These results suggest that decarboxylation of the organic acid is not abolished by a high concentration of external  $\text{CO}_2$ . Plants from the two treatments had similar starch contents until 14.00 h, which coincided with the time when the reduction in acidity had ceased (Fig. 2B). Subsequently, the starch content of plants in the HLLC treatment varied between  $17 \mu\text{mol}$  and  $23 \mu\text{mol}$  glucose equivalents  $\text{g}^{-1} \text{FW}$ , unlike that of plants in the HLHC treatment that increased markedly, up to  $73 \mu\text{mol}$  glucose equivalents  $\text{g}^{-1} \text{FW}$ , by the end of the day. At high light, the activity of Rubisco was similar at HLLC and HLHC at the start of the day, but at 14.00 h the activity of Rubisco from plants at HLLC was 3-fold higher than that from plants at HLHC. The pattern of Rubisco activity at HLLC and HLHC was similar to that observed in the acclimation experiment, with 3-fold higher activity at 14.00 h in plants treated at HLLC (Fig. 2D). The PEPC activity of plants at HLLC was very high at the end of the night, nearly  $160 \mu\text{mol g}^{-1} \text{FW h}^{-1}$ , and the PEPC:Rubisco ratio was nearly



**Fig. 1.** Diurnal changes in acidity, starch content, and enzyme activities in *O. alismoides* acclimated to a factorial combination of high light (HL), low light (LL), high  $\text{CO}_2$  (HC), and low  $\text{CO}_2$  (LC). (A) Acidity, (B) starch content as glucose equivalents, (C) PEPC activity, (D) Rubisco activity, (E) the PEPC:Rubisco ratio, and (F) PPDK activity. Bars show the mean with 1 SD for three replicates. Data with different letters are significantly different within a specific time ( $P < 0.05$ ; one-way ANOVA).

30 (Fig. 2C, E). In the HLLC treatment, the activity of PEPC and the PEPC:Rubisco ratio decreased in the morning and from 12.00 h onwards. In plants acclimated to HLHC, the activity of PEPC was lower than in the HLLC plants at the start of the day but increased significantly during the day, and reached  $120 \mu\text{mol g}^{-1} \text{FW h}^{-1}$  and exceeded the activity in the HLLC plants from 12.00 h onwards. PPDK activity did not change significantly with treatment or time of day for the HLHC treatment and did not change markedly for the HLLC treatment (Fig. 2F; Supplementary Table S2).

The contents of Chl *a* and Chl *b* (Fig. 3) were not significantly different for HLLC and HLHC during the day (Supplementary Table S2) but for HLHC they increased at the end of the day. Chl *a* content was always >2-fold higher than that of Chl *b*.

### Photosynthesis

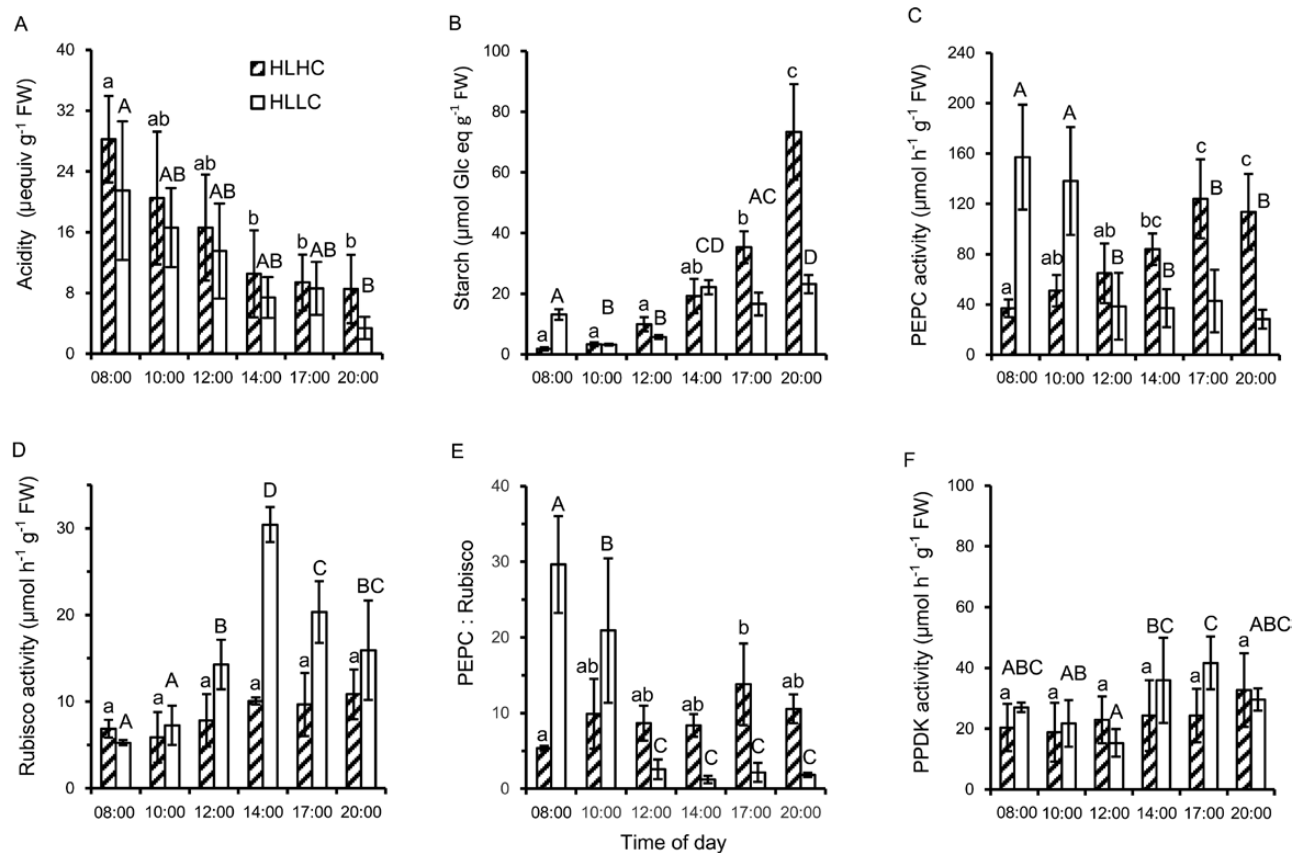
Rates of  $\text{O}_2$  exchange for leaves from HLHC and HLLC treatments had different diurnal patterns. Rates at  $\text{CO}_2$  concentrations that were at, or close to, saturating changed little over the day for the HLLC treatment (Fig. 4B), but declined slightly after mid-day in the HLHC treatment as the starch content increased (Figs 2B, 4A). The rate of photosynthesis for HLHC at  $14 \mu\text{mol l}^{-1} \text{CO}_2$  varied between  $18 \mu\text{mol O}_2 \text{ h}^{-1} \text{g}^{-1} \text{FW}$  and  $29 \mu\text{mol O}_2 \text{ h}^{-1} \text{g}^{-1} \text{FW}$  over the day, apart from at 20.00 h when it declined in line with the decline in the rate at saturating  $\text{CO}_2$ .

In contrast, the rate of photosynthesis for HLLC, although it followed a similar pattern after mid-day, was much lower at the start of the day and increased during the period when internal  $\text{CO}_2$  was being produced, reaching maximal rates at 12.00 h, and then declined. Rates of dark respiration measured during the day were, on average,  $12 \mu\text{mol O}_2 \text{ h}^{-1} \text{g}^{-1} \text{FW}$  for HLHC leaves and did not vary markedly during the day. In contrast, dark respiration rates were higher for HLLC leaves, on average  $17 \mu\text{mol O}_2 \text{ h}^{-1} \text{g}^{-1} \text{FW}$ , and they tended to increase during the day in absolute values and significantly as a proportion of rates at saturating  $\text{CO}_2$  (linear regression;  $R^2 = 0.97$ ,  $P < 0.001$ ).

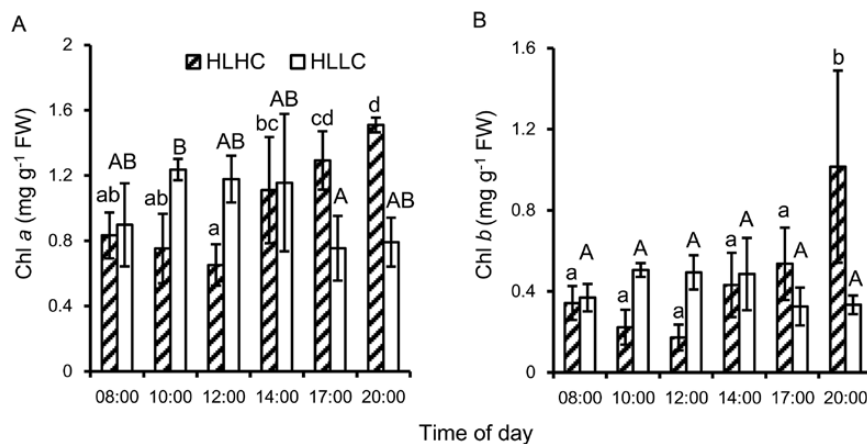
Chlorophyll fluorescence analysis showed that  $F_v/F_m$  was high at night and the yield decreased markedly at the onset of light ( $t$ -test,  $t = 3.29$ ,  $P < 0.01$ ). After this decrease, at HLHC, PSII yield increased rapidly to a steady-state value of  $\sim 0.54$ , within  $\sim 20$  min. However, at HLLC, the rate of recovery was lower (Fig. 4C) and there were significant differences between HLLC and HLHC at 08.05 h and 08.15 h ( $t$ -test,  $t = 3.52$ ,  $P < 0.01$  and  $t = 3.05$ ,  $P < 0.05$ , respectively).

### Response to short-term exposure to light and to different $\text{CO}_2$ concentrations at night

When plants acclimated to HLLC were transferred to LLLC, the acidity content during the day did not change significantly, whereas it decreased significantly in the HLLC plants (Fig. 5A). These plants also displayed very different patterns



**Fig. 2.** Effect of a short-term exposure to high  $\text{CO}_2$  on diurnal changes in acidity, starch content, and enzyme activities in *O. alismoides*. Plants acclimated to high light (HL) and low  $\text{CO}_2$  (LC) were exposed overnight to high  $\text{CO}_2$  (HC) and then kept at HLHC during the day. (A) Acidity, (B) starch content as glucose equivalents, (C) PEPC activity, (D) Rubisco activity, (E) the PEPC:Rubisco ratio, and (F) PPK activity. Bars show the mean with 1 SD for three replicates. Data with different letters are significantly different within a specific treatment ( $P < 0.05$ ; one-way ANOVA).

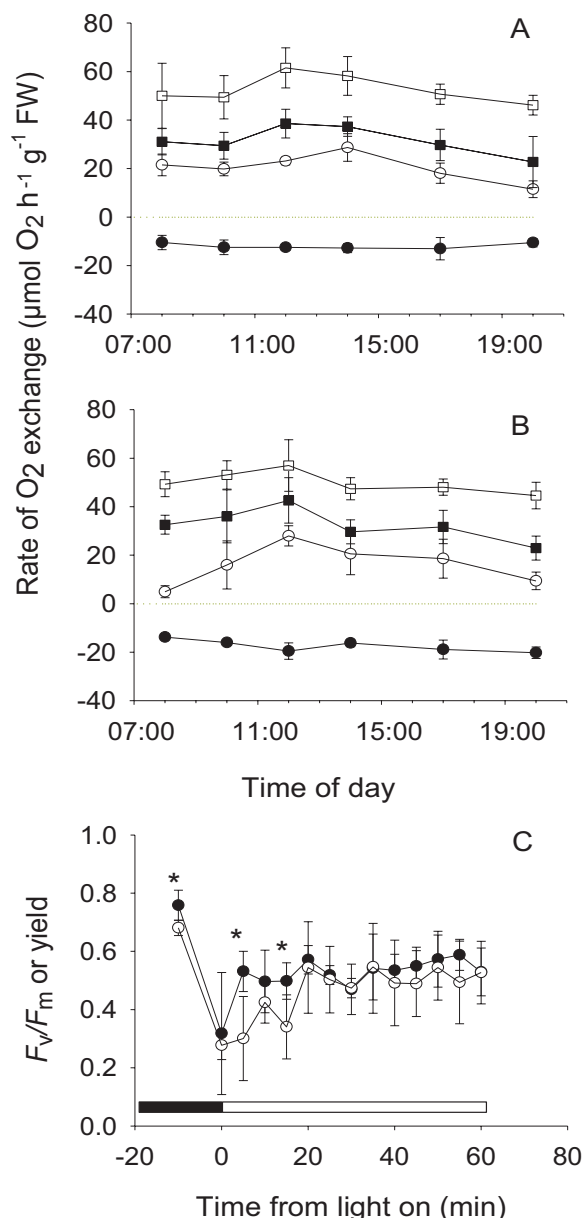


**Fig. 3.** Effect of a short-term exposure to high  $\text{CO}_2$  on diurnal changes in chlorophyll content in *O. alismoides*. Plants acclimated to high light (HL) and low  $\text{CO}_2$  (LC) were exposed overnight to high  $\text{CO}_2$  (HC) and then kept at HLHC during the day. (A) Chl a, (B) Chl b. Bars show the mean with 1 SD for three replicates. Data with different letters are significantly different within a specific treatment ( $P < 0.05$ ; one-way ANOVA).

of starch content during the day (Fig. 5B). In plants at HLLC, the starch content increased significantly, while in plants at LLLC, the starch content decreased monotonically to  $11.5 \mu\text{mol}$  glucose equivalents  $\text{g}^{-1} \text{FW}$  by the end of the day. At the end of the next night, the starch content had decreased to  $7.2$  and  $2.6 \mu\text{mol}$  glucose equivalents  $\text{g}^{-1} \text{FW}$  for HLLC and LLLC treatments, respectively, but plants supplemented with  $\text{CO}_2$  overnight had between  $4.4$  and  $4.5 \mu\text{mol}$  glucose

equivalents  $\text{g}^{-1} \text{FW}$  more starch than plants treated with low  $\text{CO}_2$  overnight.

There were no significant effects of the short-term light treatment on the activity of PEPC during the day (Fig. 5C). Rubisco activity was higher during the middle of the day for the LLLC treatment and declined during the day for the HLLC treatment (Fig. 5D). The PEPC:Rubisco ratio was highest at the start of the day for the LLLC treatment and increased during the day



**Fig. 4.** Diurnal changes in photosynthesis during the day and fluorescence at the start of the photoperiod in *O. alismoides* acclimated to high light and low  $\text{CO}_2$  (HLLC) and after a short exposure to high  $\text{CO}_2$  (HLHC). (A) Rate of net photosynthesis at 14 (open circles), 100 (filled squares), and 625  $\mu\text{mol l}^{-1} \text{ CO}_2$  (open squares) and respiration (filled circles) for HLLC leaves; (B) as for (A) but for HLLC leaves; (C) maximal and actual photochemical efficiency of PSII ( $F_v/F_m$  and yield). Values are the mean with 1 SD for three replicates (A and B) or six replicates (C). In (C), a significant difference between treatments is indicated by an asterisk ( $t$ -test), and the dark and light periods are shown by horizontal bars.

in the HLLC treatment (Fig. 5E). The PEPC activity in plants exposed overnight to high  $\text{CO}_2$  was greater at the end of the night than that in plants at low  $\text{CO}_2$ . There was no significant effect of the light treatment on the activity of PPDK, and activity did not decrease significantly at HL but decreased significantly at LL during the day (Fig. 5F; Supplementary Table S3).

#### Contribution of CAM

Generally there was an inverse relationship between acidity and starch content. The expected linear relationship was

found in the morning between malate expressed as  $2\text{H}^+$  equivalents, and acidity (malate =  $1.086 \times \text{acidity} + 4.14$ ,  $R^2 = 0.83$ ). We assumed that 1 equivalent of acidity represents 0.5 mol of malate, that for every mole of malate ( $\text{C}_4$ ) decarboxylated 1 mol of carbon ( $\text{C} + \text{C}_3$ ) is produced, that every mole of glucose ( $\text{C}_6$ ) equivalent represents 6 mol of carbon, and therefore that every acidity equivalent removed represents a 12th of a mole of glucose. Assuming also that no other processes are involved in changes in starch and acidity apart from non-CAM photosynthesis, diurnal changes in acidity and starch were used to estimate the contribution of malate decarboxylation to starch formation. On this basis, at low carbon, malate decarboxylation contributes up to 21% of the carbon stored in starch, but <2.5% for plants at high carbon (Table 1).

The percentage of night-time respiration of carbon that could be conserved by the overnight accumulation of acid was calculated as in Klavsen and Maberly (2010). This was 1.5% for HLHC and 6% for HLLC plants. Both are lower than the equivalent values for *C. helmsii* of 11% and 32%, respectively.

## Discussion

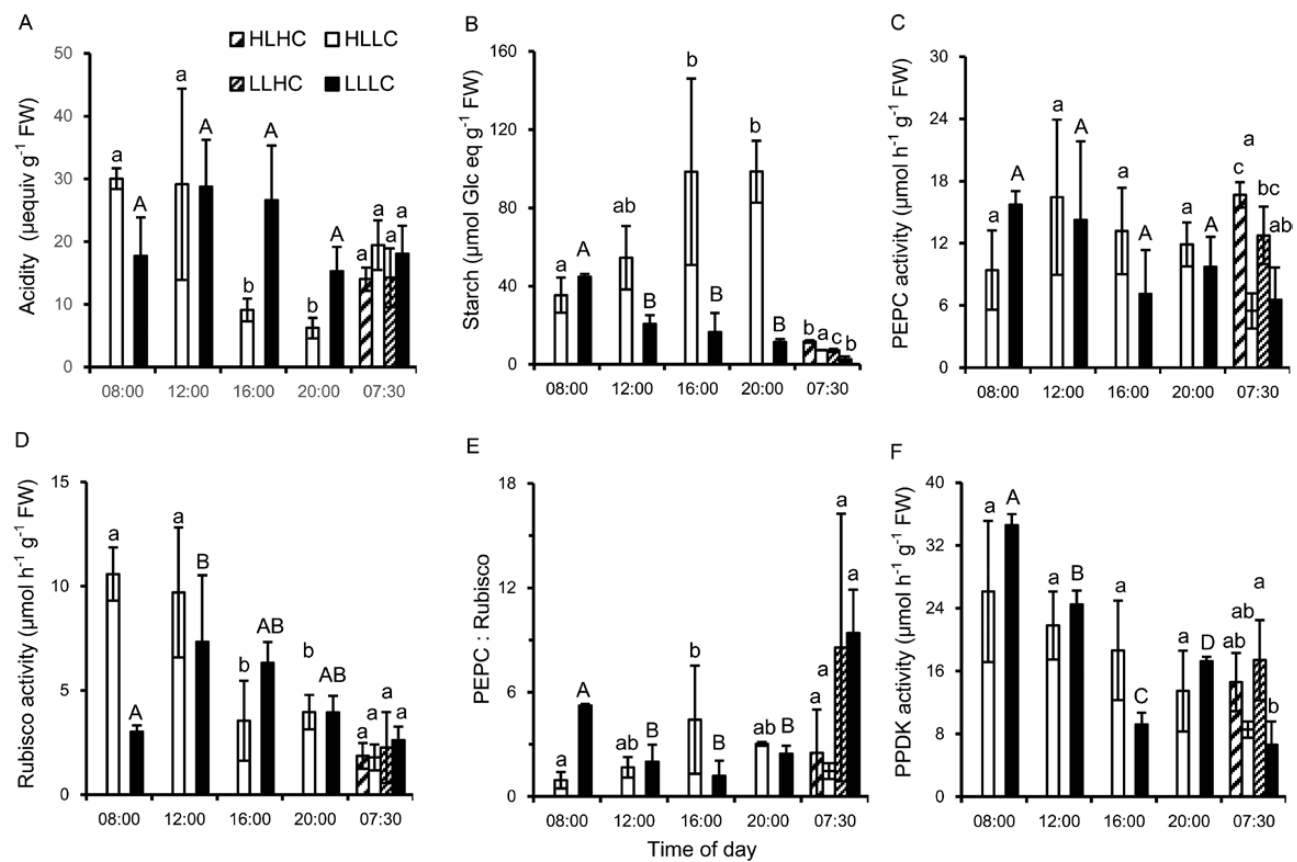
### Three CCMs in *O. alismoides*

*Ottelia alismoides* has been shown to use bicarbonate and to have  $\text{C}_4$  metabolism, both constitutively, and to possess CAM facultatively, being induced by low  $\text{CO}_2$  (Zhang *et al.*, 2014; Yin *et al.*, 2017). The results presented here confirmed that  $\text{C}_4$  is present regardless of the  $\text{CO}_2$  concentration or light level. At HLLC, PEPC activity declined during the day but the PEPC:Rubisco ratio was between 1.2 and 2.6, in agreement with a previous report and in a range typical of terrestrial  $\text{C}_4$  plants (Zhang *et al.*, 2014). Moreover, the activity of other enzymes required for the operation of the  $\text{C}_4$  cycle, such as PPDK that regenerates PEP to ensure the supply of substrate for PEPC, was also high and greater at low versus high  $\text{CO}_2$ .

In CAM plants, a high PEPC activity at night allows malic acid to be produced in the dark. In *O. alismoides*, the activity of PEPC in LC plants was very high at dawn, and the PEPC:Rubisco ratio was  $\sim 30$ , consistent with nocturnal carboxylation as a consequence of CAM activity. PEPC activity in plants exposed to HC at night was greater than in plants maintained at LC, consistent with greater CAM activity exploiting the nocturnal carbon reserves. The diel fluctuations in acidity found here, between 17  $\mu\text{equiv g}^{-1} \text{ FW}$  and 25  $\mu\text{equiv g}^{-1} \text{ FW}$  for plants at HLLC in the acclimation and short-term experiments, respectively, were slightly lower than those (up to 34  $\mu\text{equiv g}^{-1} \text{ FW}$ ) found in Zhang *et al.* (2014). They are also lower than those reported in the literature for some species (Keeley, 1981, 1998b) but higher or similar to those reported in a number of other putative CAM species (Webb *et al.*, 1988; Keeley, 1998b; Yin *et al.*, 2017). Overall, these enzyme activities and their patterns of change confirm that *O. alismoides* grown at LC can operate CAM during the night and  $\text{C}_4$ -like metabolism during the day.

### Regulation of CAM

In aquatic CAM species, such as *Littorella uniflora* and *Isoetes kirkii*, both light and  $\text{CO}_2$  affect CAM activity (Madsen, 1987;



**Fig. 5.** Effect of a short-term exposure to low light on diurnal changes in acidity, starch content, and enzyme activities in *O. alismoides*. Plants acclimated to high light (HL) and low CO<sub>2</sub> (LC) were kept at low CO<sub>2</sub> and exposed to low light (LLLC). At the end of the photoperiod, plants were treated overnight at high CO<sub>2</sub> (HC) or kept at low CO<sub>2</sub>, and leaves were harvested at the end of the scotoperiod. (A) Acidity, (B) starch content as glucose equivalents, (C) PEPC activity, (D) Rubisco activity, (E) the PEPC:Rubisco ratio, and (F) PPDK activity. Bars show the mean with 1 SD for three replicates. Data with different letters are significantly different within a specific treatment. At the end of the scotoperiod (07.30 h), different letters designate treatments whose results are significantly different ( $P < 0.05$ ; one-way ANOVA).

**Table 1.** Contribution of diel acidity change to starch production in *O. alismoides* leaves during the day

Experiment	Treatment	Mean diel change in acidity (μequiv g <sup>-1</sup> FW)	Percentage contribution of acid change to starch
Acclimation	HLHC	1.0 (3.1)	0.0
	HLLC	-8.5 (3.5)	20.7
	LLHC	8.8 (0.7)	0.6
	LLLC	16.5 (0.8)	12.1
Response to CO <sub>2</sub>	HLHC	19.7 (4.2)	2.3
	HLLC	18.1 (5.4)	7.6
Response to light	HLLC	23.8 (1.3)	2.2
	LLLC	2.5 (4.2)	0.5

Data represent the mean with the SD in parentheses.

Robe and Griffiths, 1990; Hostrup and Wiegleb, 1991; Ratray et al., 1992). Although *O. alismoides* was apparently co-limited by light and inorganic carbon when grown at low light and low CO<sub>2</sub>, CO<sub>2</sub> seems to be a very effective regulator of CAM, because CAM was absent at high CO<sub>2</sub>. The importance of CO<sub>2</sub> in controlling and inducing changes in CAM activity in *O. alismoides* is consistent with the hypothesis of Keeley (1981) suggesting that CAM has been selected as a mechanism for enhancing net carbon gain in inorganic carbon-limited aquatic environments. Investment in CAM enzymatic

apparatus and energy is beneficial when the inorganic carbon supply is limiting but not when other environmental variables, such as light or nutrients, are limiting (Madsen, 1987; Baattrup-Pedersen and Madsen, 1999). In *O. alismoides*, CAM was down-regulated when grown at ~25 μmol photon m<sup>-2</sup> s<sup>-1</sup> compared with ~150 μmol photon m<sup>-2</sup> s<sup>-1</sup>, similarly to *L. uniflora* (Madsen, 1987; Baattrup-Pedersen and Madsen, 1999) and *C. helmsii* (Klavsén and Maberly, 2010). Similarly, CAM in terrestrial plants is down-regulated when grown at low light (Borland et al., 1996; Taybi et al., 2002).

In aquatic CAM plants, a high concentration of CO<sub>2</sub> during the day reduces the rate of decarboxylation, and therefore the acidity at the beginning and end of the day are similar (Keeley, 1982; Ratray *et al.*, 1992). For *C. helmsii*, the rates of decarboxylation are similar at different concentrations of CO<sub>2</sub> (Klavnsen and Maberly, 2010), and this is also the case in *O. alismoides* where it was 2–3  $\mu\text{equiv g}^{-1} \text{FW h}^{-1}$  (equal to 32–48  $\mu\text{equiv g}^{-1} \text{DW h}^{-1}$ ), but lower than that of *C. helmsii* (Klavnsen and Maberly, 2010). In *C. helmsii*, the start of decarboxylation varied with CO<sub>2</sub> (Klavnsen and Maberly, 2010). In contrast, in *O. alismoides*, decarboxylation began immediately at the start of the day, even at high CO<sub>2</sub>, suggesting that decarboxylation of malic acid was unaffected by high CO<sub>2</sub>. Therefore, in *O. alismoides* and *C. helmsii*, the decarboxylation of malic acid is not influenced by CO<sub>2</sub> but the effect of CO<sub>2</sub> on timing during the light period differs between the two species.

Light intensity affects the decarboxylation of malic acid in *O. alismoides* as expected from other CAM studies (Osmond, 1978). When *O. alismoides* grown at HLLC were transferred to LLLC, the acidity content did not change at the start of the photoperiod, suggesting that decarboxylation of acid is not under circadian control but only occurs if sufficient light energy is available, as a direct effect or an indirect effect on carbon demand. As starch degradation supplies PEP for malic acid synthesis, one might expect an inverse relationship between starch accumulation and malic acid concentration, and therefore acidity. This is indeed a key characteristic in CAM plants (Borland and Taybi, 2004). In *O. alismoides*, the content of starch showed an inverse diel relationship to titratable acidity. When plants from HLLC were transferred to LL for a short period of time, the acidity content was high and did not change during the day, and the diel cycle of starch was abolished as in another CAM plant, *Aechmea 'Maya'* (Ceusters *et al.*, 2008).

The contribution of acidity change to starch production in *O. alismoides* was estimated from concomitant changes in these variables. When CAM was active, it contributed up to 21% of the starch produced. The contribution from CAM to the carbon balance in *O. alismoides* is similar to that in *C. helmsii* (Klavnsen and Maberly, 2010) but is less than in *Isoetes* and *L. uniflora* (Robe and Griffiths, 1990; Madsen *et al.*, 2002). In *O. alismoides*, CAM traps a relatively low proportion of night-time respiration but it does appear to have a beneficial effect on the rate of photosynthesis. At the start of the photoperiod, the rate of photosynthesis in plants at HLLC was low at air equilibrium CO<sub>2</sub> concentrations but subsequently increased ~5-fold during the period of decarboxylation and internal production of CO<sub>2</sub>, and decreased again in the afternoon as the decarboxylation rate decreased. Furthermore, analysis of fluorescence kinetics confirmed that while photosynthesis by the plants was activated rapidly at HC, the plants at LC took ~20 min to reach their full activity, which is consistent with the activation of a CCM.

#### Compatibility between C<sub>4</sub>, CAM activity, and bicarbonate use

Many aquatic macrophytes can supplement normal C<sub>3</sub> photosynthesis by additional strategies for C gain such as CAM, C<sub>4</sub>

metabolism, or bicarbonate use (Klavnsen *et al.*, 2011). *Ottelia alismoides*, perhaps uniquely, appears to have all three of the above-mentioned strategies (Zhang *et al.*, 2014). The compilation of macrophyte CCMs in Maberly and Madsen (2002) suggested that no CAM plants can use bicarbonate. In addition to *O. alismoides*, a possible additional exception is another species from the Hydrocharitaceae, *Vallisneria spirulosa*, which can use bicarbonate and perform low-level CAM (Yin *et al.*, 2017). The explanation for the rarity of this combination of CCMs is not known, but might relate to habitat. For example, CAM is common in isoetids which tend to grow at sites with low concentrations of bicarbonate and have exploitation strategies involving uptake of CO<sub>2</sub> from the sediment via continuous lacunae between roots and leaves. The two elodeids *O. alismoides* and *V. spirulosa* do not have this option and typically are found at sites with high bicarbonate concentrations. More work is needed to understand why bicarbonate use and CAM is a rare combination of CCMs in aquatic plants. *Ottelia alismoides* is an annual aquatic plant and is invasive in several regions of the world (e.g. it is on the USA's list of introduced, invasive, and noxious plants; <https://plants.usda.gov/core/profile?symbol=OTAL>, last accessed 21 February 2017). It generally inhabits still or slow-flowing water, and can produce a high plant biomass causing large diurnal fluctuations and low concentrations of dissolved CO<sub>2</sub>. The flexibility conferred by possessing three CCMs (bicarbonate and CO<sub>2</sub> use, C<sub>4</sub> and CAM metabolism) may help explain its ecological success and allow it to complete its growth cycle within a year.

CAM and C<sub>4</sub> do not usually co-exist in terrestrial plants, despite the similarity of their biochemical processes. Some species in the genus *Portulaca* operate C<sub>4</sub> photosynthesis but also CAM under drought conditions (Koch and Kennedy, 1982; Guralnick *et al.*, 2002). However, in the best studied species, *P. grandiflora*, CAM and C<sub>4</sub> do not occur in the same cells (Guralnick *et al.*, 2002). Sage (2002) suggests that while low-level CAM can co-exist with C<sub>4</sub> photosynthesis, albeit in different parts of the leaf based on the *Portulaca* example, there are a number of morphological and biochemical incompatibilities that prevent these two photosynthesis mechanisms from co-existing. One key difference between aquatic and terrestrial CAM plants is the role that stomata play in controlling carbon uptake from air. In water, if PEPC is not down-regulated during the night, and if biochemical intermediates are available, continued PEPC activity will lead to the accumulation of malic acid. *Ottelia alismoides* is currently the only known species where C<sub>4</sub> and CAM appear to be present in the same tissue, given that its leaf is only two cells thick, although further studies are needed to establish the precise location of these two biochemical pathways, determine how futile cycling is prevented during C<sub>4</sub> carbon fixation, and understand how the carboxylation and decarboxylation enzymes are regulated.

#### Supplementary data

Supplementary data are available at *JXB* online.

Table S1. Results of ANOVA for physiological parameters in *O. alismoides* grown under four combinations of light and CO<sub>2</sub>, with treatment and time as factors.

Table S2. Results of ANOVA for physiological parameters in *O. alismoides* treated with short-term variable CO<sub>2</sub> during the day, with treatment and time as factors.

Table S3. Results of ANOVA for physiological parameters in *O. alismoides* treated with short-term variable light at day and variable CO<sub>2</sub> concentration at night, with treatment and time as factors.

## Acknowledgements

This research was supported by the Chinese Academy of Sciences President's International Fellowship Initiative to SCM and BG (2015VBA023, 2016VBA006), the National Key Research and Development Program of China (2016YFA0601000), and the National Scientific Foundation of China (31460089).

## References

- Aulio K.** 1985. Differential expression of diel acid metabolism in two life forms of *Littorella uniflora* (L.) Aschers. *New Phytologist* **100**, 533–536.
- Aulio K.** 1986. CAM-like photosynthesis in *Littorella uniflora* (L.) Aschers—the role of humidity. *Annals of Botany* **58**, 273–275.
- Baatrup-Pedersen A, Madsen TV.** 1999. Interdependence of CO<sub>2</sub> and inorganic nitrogen on crassulacean acid metabolism and efficiency of nitrogen use by *Littorella uniflora* (L.) Aschers. *Plant, Cell and Environment* **22**, 535–542.
- Black MA, Maberly SC, Spence DHN.** 1981. Resistances to carbon dioxide fixation in four submerged freshwater macrophytes. *New Phytologist* **89**, 557–568.
- Borland AM, Griffiths H, Maxwell C, Fordham MC, Broadmeadow MSJ.** 1996. CAM induction in *Clusia minor* L. during the transition from wet to dry season in Trinidad: the role of organic acid speciation and decarboxylation. *Plant, Cell and Environment* **19**, 655–664.
- Borland AM, Taybi T.** 2004. Synchronization of metabolic processes in plants with Crassulacean acid metabolism. *Journal of Experimental Botany* **55**, 1255–1265.
- Bowes G.** 2011. Single-cell C<sub>4</sub> photosynthesis in aquatic plants. In: Raghavendra AS, Sage RF, eds. *C<sub>4</sub> photosynthesis and related CO<sub>2</sub> concentrating mechanisms*. Dordrecht, The Netherlands: Springer, 63–80.
- Bowes G, Rao SK, Estavillo GM, Reiskind JB.** 2002. C<sub>4</sub> mechanisms in aquatic angiosperms: comparisons with terrestrial C<sub>4</sub> systems. *Functional Plant Biology* **29**, 379–392.
- Bowes G, Salvucci ME.** 1989. Plasticity in the photosynthetic carbon metabolism of submerged aquatic macrophytes. *Aquatic Botany* **34**, 233–266.
- Brain RA, Solomon KR.** 2007. A protocol for conducting 7-day daily renewal tests with *Lemna gibba*. *Nature Protocols* **2**, 979–987.
- Casati P, Lara MV, Andreo CS.** 2000. Induction of a C(4)-like mechanism of CO<sub>2</sub> fixation in *Egeria densa*, a submersed aquatic species. *Plant Physiology* **123**, 1611–1622.
- Ceusters J, Borland AM, Londers E, Verdoodt V, Godts C, De Proft MP.** 2008. Diel shifts in carboxylation pathway and metabolite dynamics in the CAM bromeliad *Aechmea* 'Maya' in response to elevated CO<sub>2</sub>. *Annals of Botany* **102**, 389–397.
- Cushman JC, Bohnert HJ.** 1999. Crassulacean acid metabolism: molecular genetics. *Annual Review of Plant Physiology and Plant Molecular Biology* **50**, 305–332.
- Delhaize E, Ryan PR, Randall PJ.** 1993. Aluminum tolerance in wheat (*Triticum aestivum* L.) (II. Aluminum-stimulated excretion of malic acid from root apices). *Plant Physiology* **103**, 695–702.
- Guralnick LJ, Edwards G, Ku MSB, Hockema B, Franceschi VR.** 2002. Photosynthetic and anatomical characteristics in the C<sub>4</sub>-crassulacean acid metabolism-cycling plant, *Portulaca grandiflora*. *Functional Plant Biology* **29**, 763–773.
- Herrera A.** 2009. Crassulacean acid metabolism and fitness under water deficit stress: if not for carbon gain, what is facultative CAM good for? *Annals of Botany* **103**, 645–653.
- Hostrup O, Wiegand G.** 1991. The influence of different CO<sub>2</sub> concentrations in the light and the dark on diurnal malate rhythm and phosphoenolpyruvate carboxylase activities in leaves of *Littorella uniflora* (L.) Aschers. *Aquatic Botany* **40**, 91–100.
- Keeley JE.** 1981. *Isoetes howelli*—a submerged aquatic CAM plant. *American Journal of Botany* **68**, 420–424.
- Keeley JE.** 1982. Distribution of diurnal acid metabolism in the genus *Isoetes*. *American Journal of Botany* **69**, 254–257.
- Keeley JE.** 1998a. C<sub>4</sub> photosynthetic modifications in the evolutionary transition from land to water in aquatic grasses. *Oecologia* **116**, 85–97.
- Keeley JE.** 1998b. CAM photosynthesis in submerged aquatic plants. *Botanical Review* **64**, 121–175.
- Keeley JE, Rundel PW.** 2003. Evolution of CAM and C<sub>4</sub> carbon concentrating mechanisms. *International Journal of Plant Sciences* **164**, S55–S77.
- Keeley JE, Walker CM, Mathews RP.** 1983. Crassulacean acid metabolism in *Isoetes bolanderi* in high elevation oligotrophic lakes. *Oecologia* **58**, 63–69.
- Klavnsen SK, Maberly SC.** 2010. Effect of light and CO<sub>2</sub> on inorganic carbon uptake in the invasive aquatic CAM plant *Crassula helmsii*. *Functional Plant Biology* **37**, 737–747.
- Klavnsen SK, Madsen TV, Maberly SC.** 2011. Crassulacean acid metabolism in the context of other carbon-concentrating mechanisms in freshwater plants: a review. *Photosynthesis Research* **109**, 269–279.
- Koch KE, Kennedy RA.** 1982. Crassulacean acid metabolism in the succulent C(4) dicot, *Portulaca oleracea* L. under natural environmental conditions. *Plant Physiology* **69**, 757–761.
- Maberly SC.** 2014. The fitness of the environments of air and water for photosynthesis, growth, reproduction and dispersal of photoautotrophs: an evolutionary and biogeochemical perspective. *Aquatic Botany* **118**, 4–13.
- Maberly SC, Madsen TV.** 1998. Affinity for CO<sub>2</sub> in relation to the ability of freshwater macrophytes to use HCO<sub>3</sub><sup>-</sup>. *Functional Ecology* **12**, 99–106.
- Maberly SC, Madsen TV.** 2002. Freshwater angiosperm carbon concentrating mechanisms: processes and patterns. *Functional Plant Biology* **29**, 393–405.
- Madsen TV.** 1987. The effect of different growth conditions on dark and light carbon assimilation in *Littorella uniflora*. *Physiologia Plantarum* **70**, 183–188.
- Madsen TV, Maberly SC.** 1991. Diurnal variation in light and carbon limitation of photosynthesis by two species of submerged freshwater macrophyte with a differential ability to use bicarbonate. *Freshwater Biology* **26**, 175–187.
- Madsen TV, Olesen B, Bagger J.** 2002. Carbon acquisition and carbon dynamics by aquatic isoetids. *Aquatic Botany* **73**, 351–371.
- Madsen TV, Sand-Jensen K.** 1991. Photosynthetic carbon assimilation in aquatic macrophytes. *Aquatic Botany* **41**, 5–40.
- Nimmo HG.** 2000. The regulation of phosphoenolpyruvate carboxylase in CAM plants. *Trends in Plant Science* **5**, 75–80.
- Osmond CB.** 1978. Crassulacean acid metabolism—curiosity in context. *Annual Review of Plant Physiology and Plant Molecular Biology* **29**, 379–414.
- Pedersen O, Rich SM, Pulido C, Cawthray GR, Colmer TD.** 2011. Crassulacean acid metabolism enhances underwater photosynthesis and diminishes photorespiration in the aquatic plant *Isoetes australis*. *New Phytologist* **190**, 332–339.
- Ratray MR, Webb DR, Brown JMA.** 1992. Light effects on crassulacean acid metabolism in the submerged aquatic plant *Isoetes kirkii* A. Braun. *New Zealand Journal of Marine and Freshwater Research* **26**, 465–470.
- Raven JA.** 1970. Exogenous inorganic carbon sources in plant photosynthesis. *Biological Reviews of the Cambridge Philosophical Society* **45**, 167–221.
- Raven JA, Cockell CS, De La Rocha CL.** 2008. The evolution of inorganic carbon concentrating mechanisms in photosynthesis. *Philosophical Transactions of the Royal Society B: Biological Sciences* **363**, 2641–2650.
- Reiskind JB, Madsen TV, VanGinkel LC, Bowes G.** 1997. Evidence that inducible C<sub>4</sub>-type photosynthesis is a chloroplastic CO<sub>2</sub>-concentrating

mechanism in *Hydrilla*, a submersed monocot. *Plant, Cell and Environment* **20**, 211–220.

**Richardson K, Griffiths H, Reed ML, Raven JA, Griffiths NM.** 1984. Inorganic carbon assimilation in the isoetids, *Isoetes lacustris* L. and *Lobelia dortmanna* L. *Oecologia* **61**, 115–121.

**Robe WE, Griffiths H.** 1990. Photosynthesis of *Littorella uniflora* grown under two PAR regimes—C3 and CAM gas exchange and the regulation of internal CO<sub>2</sub> and O<sub>2</sub> concentrations. *Oecologia* **85**, 128–136.

**Sage RF.** 2002. Are crassulacean acid metabolism and C4 photosynthesis incompatible? *Functional Plant Biology* **29**, 775–785.

**Sage RF, Sage TL, Kocacinar F.** 2012. Photorespiration and the evolution of C4 photosynthesis. *Annual Review of Plant Biology* **63**, 19–47.

**Silvera K, Neubig KM, Whitten WM, Williams NH, Winter K, Cushman JC.** 2010. Evolution along the crassulacean acid metabolism continuum. *Functional Plant Biology* **37**, 995–1010.

**Smith AM, Zeeman SC.** 2006. Quantification of starch in plant tissues. *Nature Protocols* **1**, 1342–1345.

**Taybi T, Cushman JC, Borland AM.** 2002. Environmental, hormonal and circadian regulation of crassulacean acid metabolism expression. *Functional Plant Biology* **29**, 669–678.

**Vadstrup M, Madsen TV.** 1995. Growth limitation of submerged aquatic macrophytes by inorganic carbon. *Freshwater Biology* **34**, 411–419.

**Van TK, Haller WT, Bowes G.** 1976. Comparison of the photosynthetic characteristics of three submersed aquatic plants. *Plant Physiology* **58**, 761–768.

**Voznesenskaya EV, Franceschi VR, Kiirats O, Freitag H, Edwards GE.** 2001. Kranz anatomy is not essential for terrestrial C4 plant photosynthesis. *Nature* **414**, 543–546.

**Webb DR, Rattray MR, Brown JMA.** 1988. A preliminary survey for Crassulacean acid metabolism (CAM) in submerged aquatic macrophytes in New Zealand. *New Zealand Journal of Marine and Freshwater Research* **22**, 231–235.

**Yang T, Liu X.** 2015. Comparing photosynthetic characteristics of *Isoetes sinensis* Palmer under submerged and terrestrial conditions. *Scientific Reports* **5**, 17783.

**Yin L, Li W, Madsen TV, Maberly SC, Bowes G.** 2017. Photosynthetic inorganic carbon acquisition in 30 freshwater macrophytes. *Aquatic Botany* (in press).

**Zhang Y, Yin L, Jiang HS, Li W, Gontero B, Maberly SC.** 2014. Biochemical and biophysical CO<sub>2</sub> concentrating mechanisms in two species of freshwater macrophyte within the genus *Ottelia* (Hydrocharitaceae). *Photosynthesis Research* **121**, 285–297.