



## Dissolved organic matter uptake by *Trichodesmium* in the Southwest Pacific

Mar Benavides, Hugo Berthelot, Solange Duhamel, Patrick Raimbault, Sophie Bonnet

### ► To cite this version:

Mar Benavides, Hugo Berthelot, Solange Duhamel, Patrick Raimbault, Sophie Bonnet. Dissolved organic matter uptake by *Trichodesmium* in the Southwest Pacific. *Scientific Reports*, 2017, 7, pp.41315 10.1038/srep41315 . hal-01621711

**HAL Id: hal-01621711**

**<https://amu.hal.science/hal-01621711>**

Submitted on 3 Jul 2018

**HAL** is a multi-disciplinary open access archive for the deposit and dissemination of scientific research documents, whether they are published or not. The documents may come from teaching and research institutions in France or abroad, or from public or private research centers.

L'archive ouverte pluridisciplinaire **HAL**, est destinée au dépôt et à la diffusion de documents scientifiques de niveau recherche, publiés ou non, émanant des établissements d'enseignement et de recherche français ou étrangers, des laboratoires publics ou privés.

# SCIENTIFIC REPORTS

OPEN

## Dissolved organic matter uptake by *Trichodesmium* in the Southwest Pacific

Mar Benavides<sup>1,4</sup>, Hugo Berthelot<sup>2</sup>, Solange Duhamel<sup>3</sup>, Patrick Raimbault<sup>2</sup> & Sophie Bonnet<sup>1</sup>

Received: 26 August 2016

Accepted: 14 December 2016

Published: 24 January 2017

The globally distributed diazotroph *Trichodesmium* contributes importantly to nitrogen inputs in the oligotrophic oceans. Sites of dissolved organic matter (DOM) accumulation could promote the mixotrophic nutrition of *Trichodesmium* when inorganic nutrients are scarce. Nano-scale secondary ion mass spectrometry (nanoSIMS) analyses of individual trichomes sampled in the South Pacific Ocean, showed significant <sup>13</sup>C-enrichments after incubation with either <sup>13</sup>C-labeled carbohydrates or amino acids. These results suggest that DOM could be directly taken up by *Trichodesmium* or primarily consumed by heterotrophic epibiont bacteria that ultimately transfer reduced DOM compounds to their host trichomes. Although the addition of carbohydrates or amino acids did not significantly affect bulk N<sub>2</sub> fixation rates, N<sub>2</sub> fixation was enhanced by amino acids in individual colonies of *Trichodesmium*. We discuss the ecological advantages of DOM use by *Trichodesmium* as an alternative to autotrophic nutrition in oligotrophic open ocean waters.

Nitrogen is recognized as the proximate limiting nutrient for primary production in the oceans<sup>1</sup>. The oceanic nitrogen reservoir is controlled by a balance between fixed nitrogen gains (via dinitrogen -N<sub>2</sub>- fixation) and losses (denitrification)<sup>2</sup>. While global nitrogen budget estimations determine that denitrification exceeds N<sub>2</sub> fixation considerably<sup>3</sup>, recent improvements in the <sup>15</sup>N<sub>2</sub> isotope tracer method used to measure biological N<sub>2</sub> fixation have evidenced that formerly published rates could be underestimated by a factor of ~2 to 6<sup>4–8</sup>, and thus could be high enough to balance denitrification on a global basis. However, the variability among N<sub>2</sub> fixation rates obtained when using the two different methods (adding <sup>15</sup>N<sub>2</sub> as a bubble or pre-dissolved in seawater)<sup>4,9</sup> can be high<sup>7</sup> and at times not significant<sup>10–12</sup>. A mechanistic understanding of which factors determine the degree of discrepancy between the two <sup>15</sup>N<sub>2</sub> methods is currently lacking. Moreover, marine pelagic N<sub>2</sub> fixation had been long attributed to the tropical and subtropical latitudinal bands of the ocean, e.g.<sup>13</sup>, while other ecological niches such as high latitude waters, oxygen minimum zones and the vast dark realm of the ocean (below the euphotic zone) are now recognized as active N<sub>2</sub> fixation sites<sup>14–16</sup>. It is likely that the inclusion of these previously unaccounted for active N<sub>2</sub> fixation sites will be more important in equilibrating denitrification and N<sub>2</sub> fixation rates than the underestimation of rates due to discrepancies between isotopic tracer methods.

In chronically stratified open ocean regions such as the vast subtropical gyres, primary production depends largely on external fixed nitrogen inputs provided by N<sub>2</sub> fixation performed by prokaryotes termed ‘diazotrophs’. Diazotrophic cyanobacteria are photosynthetic prokaryotes (with the exception of the photoheterotrophic *Candidatus Atelocyanobacterium thalassa* which cannot photosynthesize)<sup>17</sup> that thrive in oligotrophic tropical and subtropical waters of the oceans where they provide an important source of fixed nitrogen for other phytoplankton<sup>13</sup>. Despite being classically regarded as photoautotrophs, some unicellular diazotrophic cyanobacteria like *Cyanothece* are able to take up dissolved organic matter (DOM) molecules photoheterotrophically<sup>18</sup>. As well, various filamentous diazotrophic cyanobacteria such as *Anabaena* bear genes for amino acids transport, which may be used to incorporate amino acids from the *in situ* DOM pool, or to assimilate amino acids self-produced during diazotrophic growth<sup>19</sup>.

<sup>1</sup>Aix Marseille Université, CNRS/INSU, Université de Toulon, IRD, Mediterranean Institute of Oceanography (MIO) UM 110, 98848, Noumea, New Caledonia. <sup>2</sup>Aix Marseille Université, CNRS/INSU, Université de Toulon, IRD, Mediterranean Institute of Oceanography (MIO) UM 110, 13288, Marseille, France. <sup>3</sup>Lamont-Doherty Earth Observatory, Division of Biology and Paleo Environment, Columbia University, PO Box 1000, 61 Route 9W, Palisades, New York 10964, USA. <sup>4</sup>Marine Biological Section, Department of Biology, University of Copenhagen, 3000 Helsingør, Denmark. Correspondence and requests for materials should be addressed to M.B. (email: mar.benavides@ird.fr)

The filamentous diazotrophic cyanobacterium *Trichodesmium* is ubiquitous in the tropical and subtropical oceans where it is estimated to contribute 60–80% of global  $N_2$  fixation inputs<sup>20</sup>. *Trichodesmium* is limited by iron and/or phosphate availability<sup>21</sup> which are often scarce in oligotrophic subtropical gyres. The concomitant accumulation of DOM in these oligotrophic gyres<sup>22</sup> where *Trichodesmium* thrives, suggests it could benefit from organic compounds. While most of the marine DOM is composed of refractory molecules that persist in seawater for millennia, labile DOM (degraded within hours or days) accumulates preferentially at the surface ocean as a result of photosynthesis products<sup>23</sup>. *Trichodesmium* has been shown to assimilate organic phosphorus compounds such as phosphomonoesters and phosphonates when phosphate is scarce<sup>24,25</sup> in an equally efficient manner to phosphate consumption<sup>26</sup>, although a minimum availability of inorganic nutrients may be needed before *Trichodesmium* can cleave the carbon-phosphorus bond of phosphonates<sup>27</sup>. On the other hand, while the uptake of carbon or nitrogen-rich DOM compounds has been studied in cultures of *Trichodesmium* (e.g. refs 28 and 29), such activity has not been revisited for almost two decades. The extent to which mixotrophic nutrition facilitates the growth and/or  $N_2$  fixation in *Trichodesmium* remains poorly known, particularly for natural colonies. Here we quantify the uptake of carbohydrates and amino acids and their effect on  $N_2$  fixation by natural *Trichodesmium* colonies using nano-scale secondary ion mass spectrometry (nanoSIMS).

## Results

Station LDA presented relatively oligotrophic conditions at the surface with inorganic nutrient concentrations below the detection limit ( $0.02\mu\text{M}$  for both nitrate  $-\text{NO}_3^-$  and phosphate  $-\text{PO}_4^{3-}$ ; Table S1), but high dissolved organic carbon (DOC;  $95.34 \pm 2.81\mu\text{M}$ ) and relatively high chlorophyll *a* concentrations ( $0.36 \pm 0.05\mu\text{g L}^{-1}$ ; Table S1) when compared to typical open ocean regional values<sup>30</sup>. Station LDB was sampled in an elevated chlorophyll *a* patch ( $0.83 \pm 0.07\mu\text{g L}^{-1}$ ) and exhibited lower DOC concentrations ( $70.65 \pm 0.09\mu\text{M}$ ). Bacterial abundance was  $> 3$ -fold higher at LDB than at LDA (Table S1).

Bulk  $N_2$  fixation rates at LDA were 2.23, 4.61 and  $4.10\text{ nmol N L}^{-1}\text{ d}^{-1}$  for the control, carbohydrate and amino acid treatments, respectively. At station LDB, bulk  $N_2$  fixation rates were  $\sim 9$ -, 5- and 2-fold higher than at LDA (21.28, 23.44 and  $10.79\text{ nmol N L}^{-1}\text{ d}^{-1}$ , respectively; Fig. 1a,b). At LDA, the addition of both carbohydrates and amino acids increased bulk  $N_2$  fixation but the variability among replicates was high, resulting in non-significant differences ( $p > 0.05$ ) as observed in previous similar experiments<sup>15</sup>. No significant enhancement of bulk  $N_2$  fixation rates were observed at station LDB for either treatment.

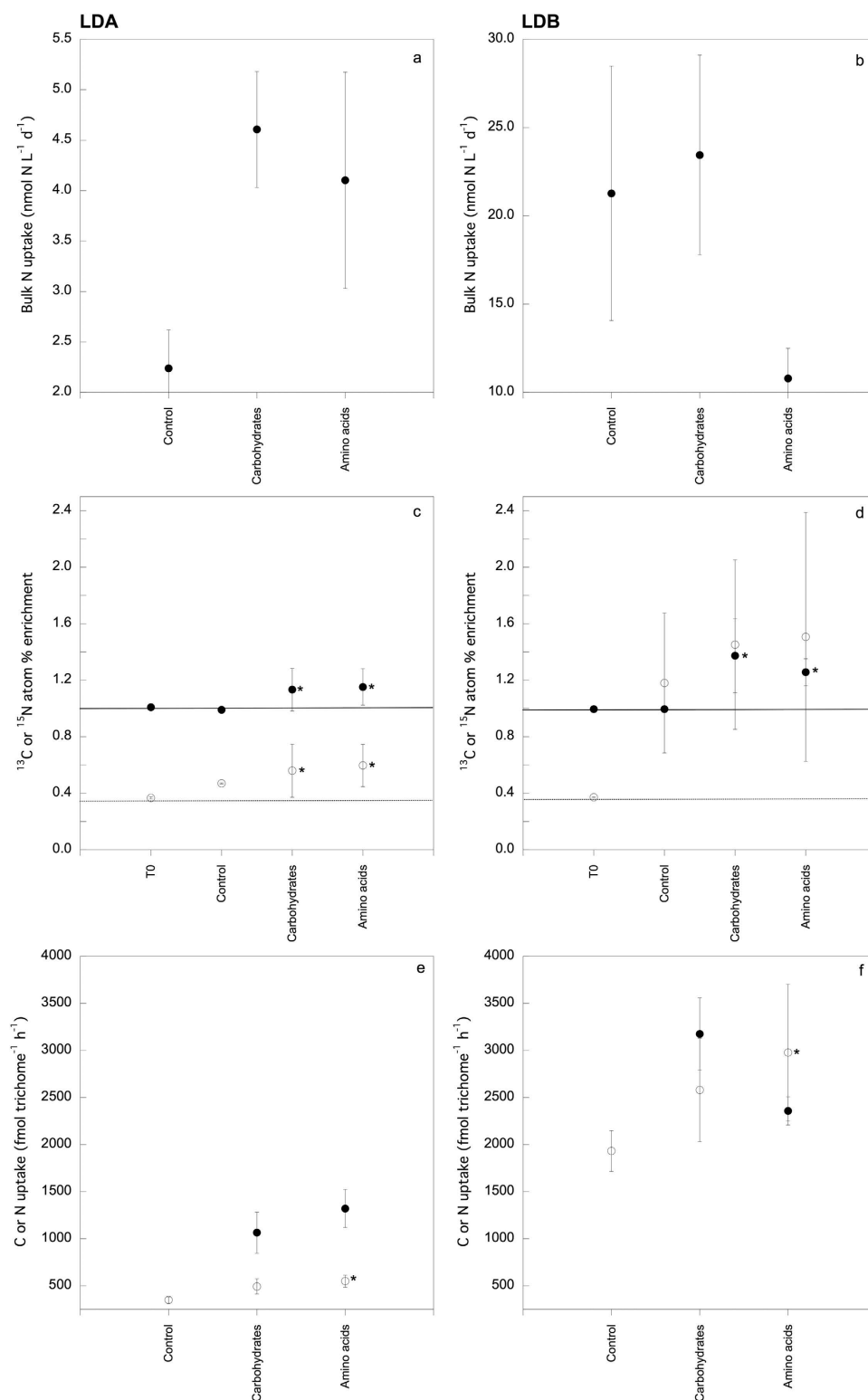
At both stations LDA and LDB, nanoSIMS analyses of individual trichomes (Table S2) revealed significant  $^{13}\text{C}$ -enrichments ( $p < 0.0001$ ) by  $\sim 1.7$ -fold relative to the control upon both carbohydrate and amino acid additions (Fig. 1c,d). These additions also significantly enhanced the  $^{15}\text{N}$ -enrichment of *Trichodesmium* by  $\sim 1.2$ -fold at station LDA (both  $p < 0.0001$ ), but not at station LDB, where a high degree of variability was observed between filaments (Fig. 1c,d). When comparing both stations, we observed that per-trichome carbon and nitrogen uptake rates were  $\sim 2$ - and 5-fold higher at LDB than at LDA (Fig. 1e,f). NanoSIMS example images of  $^{13}\text{C}$  and  $^{15}\text{N}$  enriched trichomes in control, carbohydrate and amino acid treatments are shown in Fig. 2a–f, respectively. The addition of both carbohydrate or amino acids enhanced per-trichome nitrogen uptake rates at each station, although increases were only statistically significant for amino acid additions (Fig. 1e,f).

## Discussion

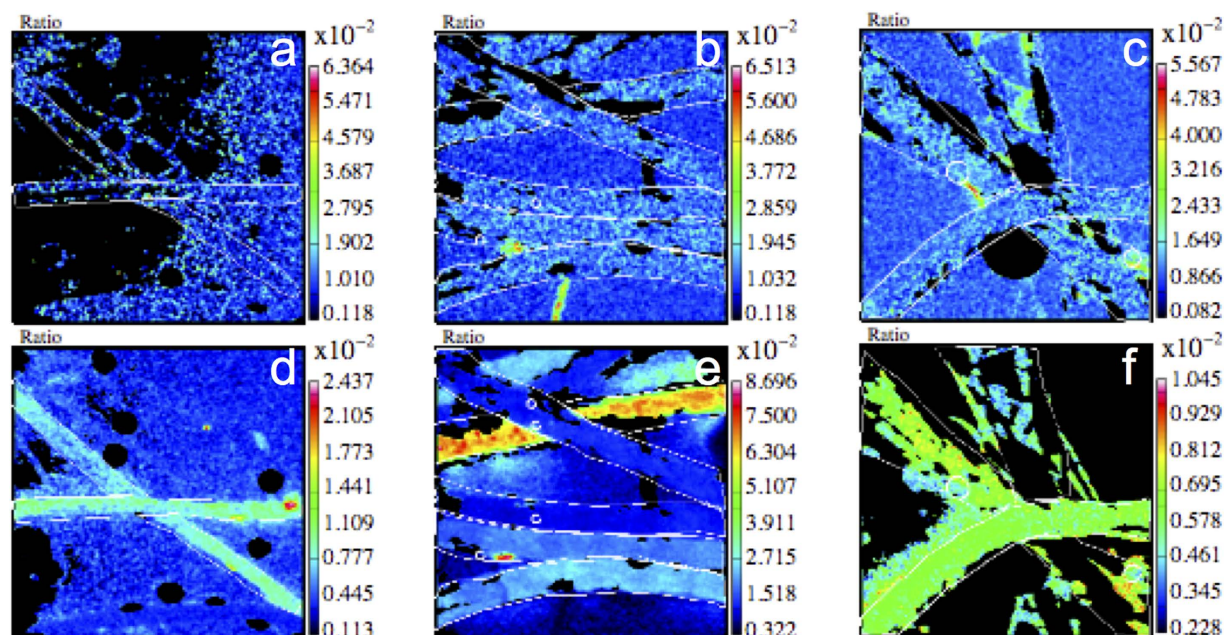
We present evidence of carbohydrate and amino acid uptake by natural *Trichodesmium* colonies in conditions usually regarded as optimal for their autotrophic growth (Table S1). The addition of either carbohydrates or amino acids increased per-trichome  $N_2$  fixation rates compared to the control at both LDA and LDB, but only amino acid additions induced statistically significant per-trichome  $N_2$  fixation enhancements (Fig. 1e,f). At LDB, the enhancement of per-trichome  $N_2$  fixation rates with respect to the control upon the addition of either carbohydrates or amino acids was  $\sim 5$ -fold higher than at LDA, suggesting different DOM degradation patterns at LDB. LDB was located inside a massive chlorophyll patch, which had been drifting eastwards for several months (see chlorophyll *a* satellite images time lapse, where station LDB is represented by a pink cross; de Verneil, 2015). The persistence of the patch could be maintained by a regular input of inorganic nutrients via wet deposition, which often enhances primary production due to the high nutrient and trace metal content of volcanic ashes in this highly seismic active area of the South Pacific Ocean<sup>31</sup>. The wet deposition of inorganic nutrients could maintain both photosynthetic and  $N_2$  fixation activities while promoting a dynamic production and consumption of DOM. The higher DOM uptake by *Trichodesmium* at LDB (Fig. 1d,f) suggests that higher *in situ* DOM availability at LDB compared to LDA, promoted the heterotrophic nutrition of *Trichodesmium* over growth on inorganic nutrients. DOC standing stocks were lower at LDB than at LDA likely due to a tight coupling between its production and consumption, as suggested by the higher bacterial abundance (Table S1) and production at LDB than at LDA (F. Van Wambeke, personal communication). Alternatively, differences in *Trichodesmium* DOM uptake between stations LDA and LDB could be influenced by different DOM uptake genetic ability in different *Trichodesmium* strains<sup>32</sup>.

Given the high energetic cost of  $\text{CO}_2$  and  $N_2$  fixation in cyanobacteria<sup>33,34</sup>, the alternative nutrition on DOM is thought to alleviate energy shortages. For example, unicellular cyanobacteria use glycerol as an alternative to  $\text{CO}_2$ <sup>18</sup>, but the use of organic carbon substrates such as carbohydrates by *Trichodesmium* has seldom been observed and at low rates<sup>35</sup>. Although the external input of combined nitrogen is thought to preclude  $N_2$  fixation in *Trichodesmium*<sup>29,36,37</sup>, our results show a significant enhancement of per-trichome  $N_2$  fixation rates upon the addition of amino acids, as observed in other sites where heterotrophic diazotrophs predominate, like in meso-pelagic waters<sup>15,38,39</sup>. Amino acids may provide a more readily accessible source of organic carbon than carbohydrates, resulting in a greater enhancement of  $N_2$  fixation rates.

DOM utilization likely confers nutritional plasticity to *Trichodesmium* in oligotrophic environments, reinforcing the obsolescence of the categorical division of marine microbes into autotrophs or heterotrophs. Although we



**Figure 1.** Bulk seawater N uptake rates at (a) station LDA, and (b) station LDB (note the different scale ranges on the y-axis). *Trichodesmium* (c,d) <sup>13</sup>C -filled circles- and <sup>15</sup>N -open circles- atom % enrichment values, and (e,f) <sup>13</sup>C and <sup>15</sup>N uptake rates at stations LDA and LDB, respectively. Error bars for C or N uptake rates (a,b,e,f) represent the standard error, while error bars for atom % graphs (c,d) represent the standard deviation of the mean. Straight and dotted lines in (c,d) indicate the average <sup>13</sup>C and <sup>15</sup>N atom % enrichment, respectively, of time zero samples (average natural abundance). Asterisks indicate statistically significant differences (Mann Whitney test,  $p < 0.05$ ).



**Figure 2.** NanoSIMS trichome  $^{13}\text{C}/^{12}\text{C}$  ratio images of (a) control, (b) carbohydrate-amended and (c) amino acid-amended samples. The corresponding  $^{15}\text{N}/^{14}\text{N}$  ratio images are displayed below (d–f).

did not conduct  $^{13}\text{C}$ -labeled bicarbonate uptake experiments during this cruise, previous experiments performed in the Southwest Pacific Ocean and in cultures of *Trichodesmium* IMS101 have shown per trichome bicarbonate uptake rates of  $\sim 2\text{--}3 \times 10^6 \text{ fmol C trichome}^{-1} \text{ h}^{-1}$ <sup>40,41</sup>, which are in the same order of magnitude as the per trichome carbohydrate uptake rates measured here ( $\sim 1\text{--}9 \times 10^6 \text{ fmol C trichome}^{-1} \text{ h}^{-1}$ ). This suggests that under certain environmental conditions, *Trichodesmium* may be able to exploit carbon comparably from inorganic and organic carbon sources.

Our results cannot however confirm whether DOM molecules were directly taken up by *Trichodesmium*, or if they were primarily reduced by epibiont bacteria and then transferred to the trichomes. For example, heterotrophic bacterial epibionts are known to facilitate dissolved organic phosphorus acquisition in *Trichodesmium* colonies<sup>42</sup>. Thus, the degree and/or functional diversity of epibiont bacteria colonization among sampling stations could have also influenced DOM uptake rates in our *Trichodesmium* samples<sup>43</sup>. We observed bacteria appearing to be attached to trichomes in our samples (Fig. S1), and thus cannot rule out this possibility. Different incubation time span experiments are needed to discern whether DOM passes through bacteria before being taken up by *Trichodesmium*, or if *Trichodesmium* assimilates DOM directly. However, such short-term experiments would require a high isotopic enrichment of the source DOM pool, which would likely bias the measured uptake rates.

We present evidence of carbohydrate and amino acid uptake by natural *Trichodesmium* colonies. Climate change scenarios predict inorganic nutrient limitation and increased DOM retention within the photic zone<sup>44</sup>, which will likely promote mixotrophy in *Trichodesmium*. Further studies on *Trichodesmium* organic versus inorganic nutrient acquisition are thus needed to predict how this important diazotroph will respond to climate alterations.

## Methods

We sampled seawater at two stations in the Southwest Pacific (LDA: 19.21°S–164.68°E, LDB: 18.24°S–170.80°W, on 26 February and 15 March 2015, respectively) at depths receiving 50% of surface photosynthetically active radiation (corresponding to 7 and 9 m depth, respectively). The samples were incubated under *in situ* simulated conditions for 36 h with equimolar quantities of  $^{13}\text{C}$ -labeled carbohydrates (sodium pyruvate, sodium acetate and glucose) or amino acids (alanine, leucine and glutamic acid; Sigma-Aldrich, Munich, Germany), added at concentrations of 4  $\mu\text{M}$  C (final concentration for the mix of all three carbohydrates or all three amino acids<sup>38</sup>). While the real marine DOM pool is molecularly highly complex and mostly refractory, these commercially available compounds were chosen as representative of carbohydrate and small organic acids typically found in marine labile DOM<sup>15,38,45</sup>. Seawater was distributed into sixteen 4.3 L transparent polycarbonate bottles (Nalgene, Rochester, NY, USA). Four bottles were filtered immediately upon collection (T0), four were amended with the carbohydrate mix, and another four with the amino acids mix. The last four bottles were used as a control without amendments. All bottles were labeled with 6 mL 98.9 atom%  $^{15}\text{N}_2$  gas (Cambridge Isotope Laboratories, Tewksbury, MA, USA) to assay  $\text{N}_2$  fixation simultaneously. Of each quadruplicate set, three bottles were used to estimate bulk  $\text{N}_2$  fixation rates (expressed as ‘N uptake’) and one bottle was used for nanoSIMS analyses (see Supplementary Information). Mann-Whitney statistical tests were used to test the significance of our results.



## References

- Falkowski, P. G. Evolution of the nitrogen cycle and its influence on the biological sequestration of CO<sub>2</sub> in the ocean. *Nature* **387**, 272–275 (1997).
- Gruber, N. & Galloway, J. N. An Earth-system perspective of the global nitrogen cycle. *Nature* **451**, 293–296 (2008).
- Codispoti, L. A. An oceanic fixed nitrogen sink exceeding 400 Tg N a<sup>-1</sup> vs the concept of homeostasis in the fixed-nitrogen inventory. *Biogeosciences* **4**, 233–253 (2007).
- Mohr, W., Großkopf, T., Wallace, D. W. R. & LaRoche, J. Methodological Underestimation of Oceanic Nitrogen Fixation Rates. *PLOS ONE* **5**, e12583 (2010).
- Großkopf, T. *et al.* Doubling of marine dinitrogen-fixation rates based on direct measurements. *Nature* **488**, 361–364 (2012).
- Wilson, S. T., Böttjer, D., Church, M. J. & Karl, D. M. Comparative Assessment of Nitrogen Fixation Methodologies, Conducted in the Oligotrophic North Pacific Ocean. *Appl Environ Microbiol* **78**, 6516–6523 (2012).
- Benavides, M. *et al.* Longitudinal variability of size-fractionated N<sub>2</sub> fixation and DON release rates along 24.5°N in the subtropical North Atlantic. *J. Geophys. Res. Oceans* **118**, 3406–3415 (2013).
- Böttjer, D. *et al.* Temporal variability of nitrogen fixation and particulate nitrogen export at Station ALOHA. *Limnol Oceanogr*, doi: 10.1002/lno.10386 (2016).
- Montoya, J. P., Voss, M., Kahler, P. & Capone, D. G. A simple, high-precision, high-sensitivity tracer assay for N<sub>2</sub> fixation. *Appl Environ Microbiol* **62**, 986–993 (1996).
- Mulholland, M. R. *et al.* Rates of dinitrogen fixation and the abundance of diazotrophs in North American coastal waters between Cape Hatteras and Georges Bank. *Limnol. Oceanogr.* **57**, 1067–1083 (2012).
- Bonnet, S., Baklouti, M., Gimenez, A., Berthelot, H. & Berman-Frank, I. Biogeochemical and biological impacts of diazotroph blooms in a low-nutrient, low-chlorophyll ecosystem: synthesis from the VAHINE mesocosm experiment (New Caledonia). *Biogeosciences* **13**, 4461–4479 (2016).
- Shiozaki, T., Nagata, T., Ijichi, M. & Furuya, K. Nitrogen fixation and the diazotroph community in the temperate coastal region of the northwestern North Pacific. *Biogeosciences* **12**, 4751–4764 (2015).
- Karl, D. M. *et al.* Dinitrogen fixation in the world's oceans. *Biogeochemistry* **57/58**, 47–98 (2002).
- Loescher, C. R. *et al.* Facets of diazotrophy in the oxygen minimum zone waters off Peru. *ISME J* **8**, 2180–2192 (2014).
- Benavides, M. *et al.* Mesopelagic N<sub>2</sub> Fixation Related to Organic Matter Composition in the Solomon and Bismarck Seas (Southwest Pacific). *PLOS ONE* **10**, e0143775 (2015).
- Ratten, J.-M. *et al.* Sources of iron and phosphate affect the distribution of diazotrophs in the North Atlantic. *Deep-Sea Res Part II* **116**, 332–341 (2015).
- Zehr, J. P. *et al.* Globally distributed uncultivated oceanic N<sub>2</sub>-fixing cyanobacteria lack oxygenic photosystem II. *Science* **322**, 1110–1112 (2008).
- Feng, X. *et al.* Mixotrophic and photoheterotrophic metabolism in *Cyanothece* sp. ATCC 51142 under continuous light. *Microbiology* **156**, 2566–2574 (2010).
- Montesinos, M. L., Herrero, A. & Flores, E. Amino acid transport systems required for diazotrophic growth in the cyanobacterium *Anabaena* sp. strain PCC 7120. *Journal of Bacteriology* **177**, 3150–3157 (1995).
- Mahaffey, C., Michaels, A. F. & Capone, D. G. The conundrum of marine N<sub>2</sub> fixation. *Am. J. Sci.* **305**, 546–595 (2005).
- Bergman, B., Sandh, G., Lin, S., Larsson, J. & Carpenter, E. J. *Trichodesmium* - a widespread marine cyanobacterium with unusual nitrogen fixation properties. *FEMS Microbiol Rev* **37**, 286–302 (2012).
- Hansell, D. A., Carlson, C. A., Repeta, D. J. & Schlitzer, R. Dissolved organic matter in the ocean: a controversy stimulates new insights. *Oceanography* **22**, 202–211 (2009).
- Moran, M. A. *et al.* Deciphering ocean carbon in a changing world. *Proc Natl Acad Sci USA* 201514645, doi: 10.1073/pnas.1514645113 (2016).
- Dyhrman, S. T., Webb, E. A., Anderson, D. M., Moffett, J. W. & Waterbury, J. B. Cell-specific detection of phosphorus stress in *Trichodesmium* from the Western North Atlantic. *Limnol Oceanogr* **47**, 1832–1836 (2002).
- Dyhrman, S. T. *et al.* Phosphonate utilization by the globally important marine diazotroph *Trichodesmium*. *Nature* **439**, 68–71 (2006).
- Beversdorf, L. J., White, A. E., Björkman, K. M., Letelier, R. M. & Karl, D. M. Phosphonate metabolism by *Trichodesmium* IMS101 and the production of greenhouse gases. *Limnol Oceanogr* **55**, 1768–1778 (2010).
- del Valle, D. A. & Karl, D. M. Aerobic production of methane from dissolved water-column methylphosphonate and sinking particles in the North Pacific Subtropical Gyre. *Aquat. Microb. Ecol.* **73**, 93–105 (2014).
- Mulholland, M. R., Ohki, K. & Capone, D. G. Nitrogen utilization and metabolism relative to patterns of N<sub>2</sub> fixation in cultures of *Trichodesmium* NIBB1067. *J Phycol* **35**, 977–988 (1999).
- Ohki, K., Zehr, J. P., Falkowski, P. G. & Fujita, Y. Regulation of nitrogen-fixation by different nitrogen sources in the marine non-heterocystous cyanobacterium *Trichodesmium* sp. NIBB1067. *Arch Microbiol* **156**, 335–337 (1991).
- Aufdenkampe, A. K. *et al.* Biogeochemical controls on new production in the tropical Pacific. *Deep-Sea Research II* **49**, 2619–2648 (2002).
- Martino, M. *et al.* Western Pacific atmospheric nutrient deposition fluxes, their impact on surface ocean productivity. *Global Biogeochemical Cycles*, doi: 10.1002/(ISSN)1944-9224 (2014).
- Rouco, M., Joy-Warren, H., McGillicuddy, D. J., Waterbury, J. J. B. & Dyhrman, S. T. *Trichodesmium* sp. clade distributions in the western North Atlantic Ocean. *Limnol Oceanogr* **59**, 1899–1909 (2014).
- Kranz, S. A., Gladrow, D. W., Nehrke, G., Langer, G. & Rosta, B. Calcium carbonate precipitation induced by the growth of the marine cyanobacteria *Trichodesmium*. *Limnol Oceanogr* **55**, 2563–2569 (2010).
- Holl, C. M. & Montoya, J. P. Interactions between nitrate uptake and nitrogen fixation in continuous cultures of the marine diazotroph *Trichodesmium* (Cyanobacteria). *J Phycol* **41**, 1178–1183 (2005).
- Paerl, H. W., Bebout, B. M. & Prufert, L. E. Bacterial associations with marine *Oscillatoria* sp. (*Trichodesmium* sp.) populations: ecophysiological implications. *J Phycol* **25**, 773–784 (1989).
- Mulholland, M. R. & Capone, D. G. Nitrogen fixation, uptake and metabolism in natural and cultured populations of *Trichodesmium* spp. *Mar Ecol Prog Ser* **188**, 33–49 (1999).
- Fu, F.-X. & Bell, P. R. Factors affecting N<sub>2</sub> fixation by the cyanobacterium *Trichodesmium* sp. GBRTRLI101. *FEMS Microbiol Ecol* **45**, 203–209 (2003).
- Bonnet, S. *et al.* Aphotic N<sub>2</sub> Fixation in the Eastern Tropical South Pacific Ocean. *PLOS ONE* **8**, e81265 (2013).
- Rahav, E. *et al.* Dinitrogen fixation in aphotic oxygenated marine environments. *FMICB* **4**, 1–11 (2013).
- Berthelot, H., Bonnet, S., Grosso, O., Cornet, V. & Barani, A. Transfer of diazotroph-derived nitrogen towards non-diazotrophic planktonic communities: a comparative study between *Trichodesmium erythraeum*, *Crocospaera watsonii* and *Cyanothece* sp. *Biogeosciences* **13**, 4005–4021 (2016).
- Bonnet, S. *et al.* Diazotroph derived nitrogen supports diatom growth in the South West Pacific: a quantitative study using nanoSIMS. *Limnol Oceanogr*, doi: 10.1002/lno.10300 (2016).
- Van Mooy, B. A. S. *et al.* Quorum sensing control of phosphorus acquisition in *Trichodesmium* consortia. *ISME J* **6**, 422–429 (2012).
- Rouco, M., Haley, S. T. & Dyhrman, S. T. Microbial diversity within the *Trichodesmium* holobiont. *Environ Microbiol*, doi: 10.1111/1462-2920.13513 (2016).

44. Passow, U. & Carlson, C. A. The biological pump in a high CO<sub>2</sub> world. *Mar Ecol Prog Ser* **470**, 249–271 (2012).
45. Dekaezemacker, J. *et al.* Evidence of active dinitrogen fixation in surface waters of the eastern tropical South Pacific during El Niño and La Niña events and evaluation of its potential nutrient controls. *Global Biogeochemical Cycles* **27**, 768–779 (2013).

## Acknowledgements

This is a contribution of the OUTPACE (Oligotrophy from Ultra-oligoTrophy PACific Experiment) project (<https://outpace.mio.univ-amu.fr/>) funded by the French research national agency (ANR-14-CE01-0007-01), the LEFE-CyBER program (CNRS-INSU), the GOPS program (IRD) and the CNES. The OUTPACE project was managed by T. Moutin, S. Bonnet and A. Doglioli from the MIO (OSU Institut Pytheas, AMU, Marseille, France). MB was funded by the People Programme (Marie Skłodowska-Curie Actions) of the European Union's Seventh Framework Programme (FP7/2007-2013) under REA grant agreement number 625185. HB was supported by a PhD scholarship from the French Ministry of Research and Education. SD was funded by the National Science Foundation (OCE-1434916). We thank I. Berman-Frank for her insightful comments to previous versions of this manuscript. We are indebted to M. Pujo-Pay, O. Grosso, S. Helias-Nunige and M. Caffin for DOC, nutrient and Chl *a* measurements, the technicians at the Laboratoire de Minéralogie & Cosmochimie (MNHN) for their invaluable assistance with nanoSIMS analyses, as well as to L. Guentas and M. Meyer for their help acquiring SEM images. G. Rougier and M. Picheral are warmly thanked for their efficient help in CTD rosette management and data processing. Finally, we thank the crew of the R/V *L'Atalante* for outstanding shipboard operation.

## Author Contributions

Conceived and designed the experiments: M.B., S.B., S.D. Performed the experiments: M.B., S.D., H.B. Analyzed the data: M.B., H.B. Contributed reagents/ materials/ analysis tools: P.R., S.D., S.B. Wrote the paper: M.B., S.B., S.D., H.B.

## Additional Information

**Supplementary information** accompanies this paper at <http://www.nature.com/srep>

**Competing financial interests:** The authors declare no competing financial interests.

**How to cite this article:** Benavides, M. *et al.* Dissolved organic matter uptake by *Trichodesmium* in the Southwest Pacific. *Sci. Rep.* **7**, 41315; doi: 10.1038/srep41315 (2017).

**Publisher's note:** Springer Nature remains neutral with regard to jurisdictional claims in published maps and institutional affiliations.



This work is licensed under a Creative Commons Attribution 4.0 International License. The images or other third party material in this article are included in the article's Creative Commons license, unless indicated otherwise in the credit line; if the material is not included under the Creative Commons license, users will need to obtain permission from the license holder to reproduce the material. To view a copy of this license, visit <http://creativecommons.org/licenses/by/4.0/>

© The Author(s) 2017