



HAL
open science

Chronic use of proton pump inhibitors, adverse events and potential biological mechanisms: A translational analysis

Farid Kheloufi, Diane Frankel, Elise Kaspi, Marion Lepelley, Michel Mallaret,
Quentin Boucherie, Patrice Roll, Joëlle Micallef

► To cite this version:

Farid Kheloufi, Diane Frankel, Elise Kaspi, Marion Lepelley, Michel Mallaret, et al.. Chronic use of proton pump inhibitors, adverse events and potential biological mechanisms: A translational analysis. *Thérapie*, 2018, 10.1016/j.therap.2017.08.003 . hal-01664284

HAL Id: hal-01664284

<https://amu.hal.science/hal-01664284>

Submitted on 29 Mar 2018

HAL is a multi-disciplinary open access archive for the deposit and dissemination of scientific research documents, whether they are published or not. The documents may come from teaching and research institutions in France or abroad, or from public or private research centers.

L'archive ouverte pluridisciplinaire **HAL**, est destinée au dépôt et à la diffusion de documents scientifiques de niveau recherche, publiés ou non, émanant des établissements d'enseignement et de recherche français ou étrangers, des laboratoires publics ou privés.

Full Title : Chronic Use of proton pump inhibitors, adverse events and potential biological mechanisms: a translational analysis

Short Title : Proton pump inhibitors and pharmacosurveillance

Kheloufi F^{1,2}, Frankel D^{3,4}, Kaspi E^{3,4}, Lepelley M⁵, Mallaret M⁵, Boucherie Q^{1,2}, Roll P^{3,4}, Micallef J^{1,2}

¹ Regional Pharmacovigilance Centre of Marseille Provence Corse, Department of Clinical Pharmacology and Pharmacovigilance, Assistance Publique – Hôpitaux de Marseille, Marseille, France

² Aix Marseille Université, Institut de Neurosciences Timone, CNRS 7289

³ INSERM, GMGF UMRS 910, Aix-Marseille University, Marseille, France

⁴ Hôpital la Timone, Service de Biologie Cellulaire, Marseille, France

⁵ Regional Pharmacovigilance Centre of Grenoble, CHU de Grenoble, France

*Corresponding author:

Joelle MICALLEF, M.D., Ph.D.

Regional Pharmacovigilance Centre of Marseille Provence Corse

270 boulevard Sainte Marguerite

13009 MARSEILLE

Email: joelle.micallef@ap-hm.fr

Telephone: +33491747560

Conflict of interest

Farid KHELOUFI has no conflicts of interest to disclose.

Diane FRANKEL has no conflicts of interest to disclose.

Elise KASPI has no conflicts of interest to disclose

Marion LEPELLEY has no conflicts of interest to disclose

Michel MALLARET has no conflicts of interest to disclose

Quentin BOUCHERIE has no conflicts of interest to disclose

Patrice ROLL has no conflicts of interest to disclose

Joëlle MICALLEF has no conflicts of interest to disclose

1 **Resume**
2
3

4 Les inhibiteurs de la pompe à protons (IPP) sont parmi les médicaments les plus prescrits. Des
5 effets indésirables sont rapportés lors d'une utilisation chronique, souvent en dehors des
6 indications appropriées. L'objectif de ce travail est, après une synthèse précise des études de
7 pharmacoépidémiologiques positives sur le risque de complications rénales, cardiovasculaires
8 et neurologiques (démence, insuffisance rénale chronique, infarctus du myocarde et accident
9 vasculaire cérébral), de proposer une analyse globale et intégrée des mécanismes biologiques
10 potentiellement impliqués.
11

12 Onze études pharmacoépidémiologiques, principalement menées sur des bases de données de
13 d'assurance maladie et d'hospitalisation, ont montré un risque accru de complications
14 associées à l'utilisation du PPI, et souvent lors d'une dose cumulée évocatrice d'une possible
15 relation dose-effet. Plusieurs mécanismes ont été suggérés par des études *in vitro* (dysfonction
16 endothéliale, sénescence endothéliale, hypomagnésémie, augmentation des taux de
17 chromogranine A, diminution du NO dans les cellules endothéliales) conduisant à une
18 altération de l'homéostasie vasculaire, pouvant favoriser la survenue de ces complications.
19

20 Les données disponibles suggèrent que les IPP pourraient avoir un effet Off target,
21 nécessitant une attitude prudente dans leur prescription, en particulier chez les personnes
22 âgées et / ou dans le contexte d'une utilisation chronique.
23
24
25
26
27
28
29
30
31
32
33
34
35
36
37
38
39
40
41
42
43
44
45
46
47
48
49
50
51
52
53
54
55
56
57
58
59
60
61
62
63
64
65

1
2 **Abstract**
3

4 Proton pump inhibitors (PPIs) are among the most frequently prescribed drugs. Even if PPI
5 are usually considered as safe, there is a growing concern for a range of adverse effects of
6 chronic PPI therapy often in the absence of appropriate indications. We propose, after a
7 summary of renal, cardiovascular and neurological complications (dementia, chronic kidney
8 disease, myocardial infarction and stroke), an integrative overview of the potential biological
9 mechanisms involved.
10
11

12 Eleven positive pharmacoepidemiological studies, mainly based on Health Insurance
13 Database linkage to hospital database, reported an increased risk of complications associated
14 to PPI use and often a graded association suggesting also a possible dose-response
15 relationship. Several mechanisms have been suggested through in vitro studies (endothelial
16 dysfunction, endothelial senescence, hypomagnesemia, increase of chromogranin A levels,
17 decrease of NO in endothelial cells) leading to the impairment of vascular homeostasis,
18 paving the way to these complications.
19
20

21 Evidence that PPIs may have off-targets and pleiotropic effects are mounting and may impose
22 a cautious attitude in the prescription of PPI's, especially in elderly and/or in the context of
23 chronic use.
24
25
26
27
28
29
30
31
32
33
34
35

36 **Keys words :** Proton Pump Inhibitors - Safety - Endothelial dysfunction - Vascular risk
37
38

39 Pharmacoepidemiology- Pharmacovigilance
40
41
42
43
44
45

46 **Mots clés :** Inhibiteurs de la pompe à protons – Sécurité – Dysfonctionnement endothelial –
47
48
49
50
51
52
53
54
55
56
57
58
59
60
61
62
63
64
65

Abréviations

ADMA : asymmetrical dimethylarginine

ARIC : Atherosclerosis Risk in Communities

CANTAB : CAMbridge Neuropsychological Test Automated Battery

CgA : Chromogranin-A

CKD : Chronic Kidney Disease

DDAH : dimethylarginine dimethylaminohydrolase

DMSO : dimethyl sulphoxide

eGFR : estimated Glomerular Filtration Rate

GHS: Geisinger Health System

NO: nitric oxide

NOS: nitric oxide synthase

PPIs : Proton pump inhibitors

PS: Propensity Score

1
2 **Introduction**
3
4
5
6

7 Proton pump inhibitors (PPIs) are among the most frequently prescribed drugs. In 2012, this
8 class ranked in the top 10 national health-related drug expenditures in United States [1]. The
9 proportion of PPI use is also high in some European countries. In Spain, omeprazole ranked
10 number one in drug sales in 2010, representing 5.5% of total drug packaging invoiced [2].
11
12 The use of antiulcer agents in Spain has increased almost four times since the year 2000,
13 primarily due to an increase in PPI use [2]. Similar trends are seen in other countries including
14 the Netherlands, Iceland, Denmark, United Kingdom, Belgium, France and Australia [2-5].
15
16 Health care providers are increasingly prescribing PPIs for prolonged, sometimes lifetime,
17 use, often without appropriate indications [6]. Furthermore, in several countries several PPIs
18 are available over-the-counter, which encourages their consumption especially for
19 unapproved indications [7]. Many studies have been published on the rate of
20 inappropriateness of PPI in both hospitalized and primary care patients, ranging from 27% to
21 81% [8-9].
22
23

24 Even if PPI are usually considered as safe, there is a growing concern for a range of potential
25 adverse effects due to chronic PPI therapy [6, 10]. More precisely, recent evidence suggests
26 that long term use of PPIs may increase the risk of dementia [11-12] chronic kidney diseases
27 [13-14] and cardiovascular events such as strokes or myocardial infarctions [15-16]. Because
28 new data on biological and clinical experiments with PPI have been published during the
29 same period, we propose, after a summary of these complications, an integrative overview of
30 the potential biological mechanisms involved.
31
32
33
34
35
36
37
38
39
40
41
42
43
44
45
46
47
48
49
50
51
52
53
54
55
56
57
58
59
60
61
62
63
64
65

Drug safety issues related to PPIs are increasing

Many pharmacoepidemiological studies described potential adverse effects of PPI long-term use (Table 1). Over the past 3 years, safety issues related to neurological disorders have also been described, concerning the potential involvement of PPI as a putative factor of dementia, especially in elderly people. The first study published in 2015 was performed on data from a longitudinal multicenter cohort study in elderly primary care patients, the German Study Aging, Cognition and Dementia in primary care (AgeCoDe) including 3327 community-dwelling persons aged > 75 years [17]. The use of PPI had a significantly increased risk of any dementia (HR =1.38) and Alzheimer disease (HR=1.44). Of the covariates included in the study, the known risk factors, age, the presence of ApoE4 allele, depression, diabetes, and stroke were found to increase significantly the risk of any dementia and/or Alzheimer disease [17].

The study of Gomm et al. was performed on a longitudinal sample of patients free of dementia, aged of 75 years (n=73 679) from the largest German Insurance health database including inpatient and outpatient diagnosis (ICD codes) and drugs prescriptions [11].

Using Cox regression with time-dependent variables, and after adjustment for potential confounding factors (age, sex, comorbidity and polypharmacy), a significantly increased risk of incident dementia was found in patients receiving regular PPI compared with the patients without PPI medication (HR= 1.44). As expected, anticholinergic drug use was also a risk factor of incident dementia (HR=1.80).

More recently, a study performed on a population-based cohort (7 863 PPI users) identified from Taiwan's national Health Insurance research Database confirmed the previous works of the two German studies [12]. After propensity score matching and adjustment for the

1 covariates, PPI users had a slightly risk of developing dementia than non-users (HR = 1.22).

2 A significant association between cumulative PPI use and all-cause dementia (trend p-value =
3 0.013) was also found.
4

5
6 Recently two clinical pharmacology studies have shown a significant association between IPP
7 and impairment on cognitive function [18-19]. Akter et al. investigated the effects of a short-
8 term exposure of several PPIs on cognitive functions using a computerized
9 neuropsychological tests battery (Cambridge Neuropsychological Test Automated Battery)
10 called CANTAB which is well documented and validated to measure cognitive impairment in
11 patients and healthy subjects [20]. Sixty healthy and young subjects (range 20-26 years) of
12 either gender were randomly assigned into 6 groups (five groups according each IPP and one
13 placebo group) [18]. A statistically and clinically significant impairment in visual memory,
14 attention, executive function working and planning function was found. Interestingly, using a
15 very large UK population cohort (n= 502 647 participants) assessed by three validated
16 cognitive tests (verbal–numerical reasoning, memory and reaction time), participants in their
17 middle age taking PPIs showed poorer cognitive function compared to non-takers [19].
18
19

20 Recent studies reported that the use of PPIs was also associated with kidney function
21 impairment, and more particularly with chronic kidney disease (CKD).
22
23

24 Xie et al. 2016 have performed a retrospective observational study in the Department of
25 Veterans Affairs national databases, including new users of PPIs (n=173 321) and new users
26 of H2-receptor antagonists (n=20 270) [21]. The authors reported an increased relative risk of
27 incident CKD associated with PPIs use compared with H2 receptor antagonist use (HR= 1.22)
28 They also reported increased relative risks of other endpoints related to renal function,
29 including eGFR (estimated Glomerular Filtration Rate) decline of >30% (HR = 1.32) and end
30 stage renal disease (HR =1.96).
31
32
33
34
35
36
37
38
39
40
41
42
43
44
45
46
47
48
49
50
51
52
53
54
55
56
57
58
59
60
61
62
63
64
65

1 Lazarus et al. conducted a prospective observational study (n=10 482) in the Atherosclerosis
2 Risk in Communities (ARIC) study between 1996 and 2011 and a retrospective study (n=248
3
4 751) in the Geisinger Health System (GHS), a large rural health care system in the US. The
5
6 authors reported an increased risk of CKD (as ascertained by ICD codes determined through
7
8 linkage to the United States Renal Data System registry) associated with self-report PPIs use
9
10 in the ARIC cohort (HRa= 1.50) [14]. They have replicated these findings in the Geisinger
11
12 Health System cohort (HRa= 1.17) with the diagnosis of CKD based on eGRF and use of PPI
13
14 by prescription claims. A higher risk was observed in patients prescribed twice daily at
15
16 baseline (HRa= 1.46) suggesting a dose-response relationship. The authors estimated an
17
18 absolute difference in 10-year CKD risk of 1.7% to 3.3% attributable to PPI use, translating
19
20 into a number needed to harm of approximately from 30 to 60. Sensitivity analysis including a
21
22 time-varying exposure model, propensity-score matching strengthened the findings [14].
23
24
25
26
27

28 Arora et al compared PPI users versus non-users from the Veterans Affairs Health Care New
29
30 York and observed a higher risk of CKD (incident <60ml/mi/1.73 m²) in PPIs users [13]. Xi
31
32 et al aimed to assess the association of PPI use and the risk of long-term outcomes (including
33
34 incident CKD, CKD progression and end stage renal disease) in those without intervening
35
36 acute kidney injury (AKI), endorsing the possibility of a direct effect of PPI on chronic renal
37
38 outcomes [22]. Lastly Klatte et al assessed the association between PPI use and the risk of
39
40 CKD progression [23]. Using the Stockholm CREatinine Measurements database from 2006 to
41
42 2011, a cohort of new users of PPIs (n=105 305) and new users of H2 blockers (n=9 578) was
43
44 identified. The primary outcome was the progression of CKD (defined as doubling of
45
46 creatinine or decrease of eGFR of 30% or more). The secondary outcomes were end-stage
47
48 renal disease and AKI. Users of PPIs had an increased risk for doubled levels of creatinine
49
50 (HRa= 1,26) and a decrease in eGFR (HRa =1.26). An increasing cumulative PPI use was
51
52 associated with a higher risk for both primary outcome [23].
53
54
55
56
57
58
59
60
61
62
63
64
65

1 Cardiovascular events have also been associated with PPIs. The association between PPI use
2 and cardiovascular events has been extensively studied due to a possible pharmacokinetic
3
4 interaction with antiplatelet therapy [24-28]. Recently several pharmacoepidemiological
5
6 studies have been performed to address the effect of PPI alone [15, 29-30]. A population-
7
8 based study from Ontario between 1996 and 2008 using a self-matched case series found that
9
10 the initiation of PPIs was associated with a higher risk of acute myocardial infarction (OR
11
12 =1,8) and heart failure (OR= 1.8) [29]. Similar findings were also described with histamine
13
14 H2 receptor antagonists and benzodiazepines, with no known cardiac toxicity, restricting the
15
16 added value of this work. Shi et al conducted a nationwide population-based study using the
17
18 Taiwan National Health Insurance Research Database [30]. Two different study designs were
19
20 performed to identify the association between PPI use and MI, the first using a propensity
21
22 score-matching analysis (PS) and the second a case-crossover analysis. In the PS study, PPI
23
24 use was associated with a 1.58-fold greater risk of MI. The association remains consistent
25
26 across subgroups defined by age, gender and diabetes mellitus. In the second approach, PPI
27
28 use was still associated with an increased risk for MI for 7-day and 14-day window period.
29
30
31
32
33
34
35
36
37
38

39 Using a complex approach for mining clinical data (clinical notes both inpatient and
40
41 outpatient) for pharmacovigilance, Shah et al. demonstrated a two-fold increase of
42
43 cardiovascular mortality in patients with gastroesophageal reflux disease exposed to PPI (HR
44
45 = 2.00; 95% CI 1.07–3.78; P = 0.031) [15]. No cardiovascular risk was found with histamine
46
47 H2-receptor antagonist (Shah, 2015). A retrospective nationwide study on Taiwan national
48
49 health insurance was performed to assess the risk of first-time ischemic stroke associated with
50
51 PPI use [16]. Two analyses were applied, one using a propensity score analysis (PS) and the
52
53 second using a nested case-control design. In the PS study, PPI use was associated with a
54
55
56
57
58
59
60
61
62
63
64
65

1
2 1.36-fold greater risk of stroke. In the second approach, PPI use was still associated with an
3 increased risk for stroke for 30 days, between 31 to 90 days and between 91 and 180 days.
4
5

6 7 **Potential biological mechanisms are emerging**

8
9 Recently, many pathophysiological hypotheses have been proposed to explain cardiovascular
10 events, renal failure and neurological defects potentially induced by PPIs. The biological
11 pathways we present here are inter-connected and linked with 3 major mechanisms which
12 could conduct to high vascular risk, nephrotoxicity and dementia: i) increase of endothelial
13 senescence, ii) endothelial dysfunction and iii) lysosomal acidification impairment (Figure 1).
14
15

16
17 Yepuri et al. demonstrated using human endothelial cells, that a chronic exposure of
18 esomeprazole, but not of another H⁺/K⁺ ATPase inhibitor called SCH-28080, led to an
19 endothelial senescence linked to telomere attrition and oxidative stress [31]. This accelerated
20 endothelial aging was associated with a reduced endothelial cell proliferation and
21 angiogenesis. To support the senescence hypothesis, Costarelli et al. showed by using a
22 transcriptomic approach on human coronary artery endothelial cells, that treatment by
23 omeprazole or lansoprazole induced a down-regulation of genes encoding anti-atherogenic
24 chemokines in senescent endothelial cells, while these genes were up-regulated in untreated
25 senescent cells [32]. By this way, PPIs could activate pro-atherogenic pathways in endothelial
26 senescent cells.
27
28

29
30 Endothelial dysfunction is defined as a reduction in vasodilation in response to endothelial
31 stimuli leading to the development of pathological inflammatory processes and vascular
32 disease. Reduced nitric oxide (NO) synthesis and release by endothelial cells is one of the
33 major mechanism associated with endothelial dysfunction [33]. Using biochemical *in vitro*, *ex*
34 *vivo* and *in vivo* experiments, Ghebremariam et al. demonstrated that PPIs significantly
35 inhibited human dimethylarginine dimethylaminohydrolase (DDAH) activity [34]. This led to
36
37
38
39
40
41
42
43
44
45
46
47
48
49
50
51
52
53
54
55
56
57
58
59
60
61
62
63
64
65

1 an increase of endothelial and serum asymmetrical dimethylarginine (ADMA) levels
2 associated with a decrease of nitric oxide synthase (NOS) and a decrease of NO level in
3
4 endothelial cells. Yepuri et al. also demonstrated a decrease of DDAH1/2 expression in
5
6 endothelial cells associated with a decrease of endothelial NOS (eNOS), inducible NOS
7
8 (iNOS) and NO generation [31]. The increase in ADMA levels may lead to a disruption of
9
10 vascular homeostasis via a decrease of NO release, which could explain the increase risk of
11
12 adverse vascular events in patients receiving PPIs.
13
14
15

16 Furthermore, the European Medicine Agency recently provided a special warning on the
17
18 increase of circulating level of Chromogranin-A (CgA) in patients under PPIs [35-36]. CgA is
19
20 a soluble protein secreted from the adreno-medullary chromaffin granules. The proteolytic
21
22 processing of CgA generates fragments (e.g catestatin, pancreastatin, vasostatin and serpinin)
23
24 [37]. CgA and its fragments generate different angiogenic effects: CgA and vasostatin-1 exert
25
26 anti-angiogenic effects CgA by inhibiting the TNF-elicited changes on endothelial cells and
27
28 the proangiogenic Vascular Endothelial Growth Factor) [38], whereas catestatin activates
29
30 endothelial angiogenesis, vascularization, proliferation, cell chemotaxis and inhibits
31
32 endothelial cell apoptosis [39]. An elevated plasma level of CgA has also been described in
33
34 several cardiovascular pathological contexts as essential hypertension, hypertension
35
36 secondary to parenchymal disease and chronic heart failure. Moreover, Chen et al.
37
38 demonstrated that CgA induces calcium-dependent secretion of all Weibel-Palade body
39
40 constituents, especially endothelin-1 [40]. Endothelin-1 has been implicated in vascular
41
42 dysfunction by pro-inflammatory and pro-atherosclerotic effects [41] and has also been
43
44 associated with CKD [42]. Dhaun et al. suggested that endothelin-1 could impair kidney
45
46 function by acting one of its receptor called ETA, leading to the development of proteinuria
47
48 through its effects on podocytes (alterations in actin skeleton, loss of nephrin) [43]. Moreover,
49
50 endothelin-1 induces the release of pro-inflammatory and profibrotic cytokines via the
51
52
53
54
55
56
57
58
59
60
61
62
63
64
65

1 activation of mesangial cells, and also induces cell proliferation and the production of matrix
2 proteins leading to glomerular sclerosis. Finally, endothelin-1 acts on renal inflammation via
3 the macrophages infiltration in glomerulus. Yepuri et al. also provided other mechanisms
4 leading to endothelial dysfunction such as impaired endothelial lysosomal acidification
5 associated to impaired proteostasis [31]. Furthermore, nephrotoxicity of PPIs could be due to
6 defects of lysosomal acidification and proteostasis, to hypomagnesemia or both, causing
7 oxidative stress and leading to renal endothelial cell dysfunctions [44].
8
9

10 Concerning neurological defects, observational data are now supported by fundamental
11 biological studies. First, PPIs such as omeprazole have been shown to cross the blood-brain
12 barrier [45]. Badiola et al. demonstrated using in vitro and in vivo models that lansoprazole
13 can increase amyloid- β peptides, which is one of the major pathological hallmarks in
14 Alzheimer disease [46]. Moreover, Fallahzadeh et al. hypothesized that PPIs could inhibit the
15 V-ATPases on microglial lysosomes and lead to a basification of lysosomes, hampering
16 degradation of amyloid- β peptides [47]. Another factor increasing dementia in patients
17 chronically treated by PPIs might be a vitamin B12 deficiency. Several studies described a
18 decrease of vitamin B12 linked to prolonged use of PPIs, especially in elderly individuals [48-
19 49]. Indeed, reduced levels of vitamin B12 have been associated with cognitive impairment
20 ([50-51]. A decrease of vitamin B12 enhances hyperhomocysteinemia, described to increase
21 ADMA, which increases cardiovascular diseases that may cause cognitive decline, leading to
22 Alzheimer disease [52]. Thus, cardiovascular impairment potentially induced by PPIs might
23 also be considered as an important pathophysiological factor of dementia.
24
25

26 Finally, Marlicz et al. suggested the influence of PPIs on the gut microbiota as an alternative
27 to explain an increased risk of chronic diseases linked to these molecules [53]. PPIs could
28 affect the gut-vascular permeability leading to bacterial endotoxemia, described to strongly
29 increase the risk of cardiovascular disease [54]. Moreover, composition of intestinal
30
31
32
33
34
35
36
37
38
39
40
41
42
43
44
45
46
47
48
49
50
51
52
53
54
55
56
57
58
59
60
61
62
63
64
65

1 microbiota has been recently proposed as a key factor leading to aging-associated alterations
2 [55], and could have a role in a cognitive decline by the so called ‘gut-brain interactions’ [56].
3
4
5

6
7 To date, biological effects were mostly evaluated *in vitro*. Several questions regarding these
8
9 studies need to be answered such as the relevancy of doses used *in vitro* compared to
10
11 therapeutic dose range used in patients partly because lower protein concentrations in culture
12
13 medium than in plasma [57]. Similarly, drug penetration in cells could be very different in
14
15 *in vitro* compared to *in vivo* conditions due to the use of the vehicle (dimethyl sulphoxide,
16
17 DMSO) increasing cell membrane permeability. Future studies need to understand all the
18
19 underlying mechanisms involved in adverse effects of PPIs by following biological markers
20
21 such as chromogranin A, endothelin-1, magnesium, B12 vitamin or DDAH and ADMA.
22
23
24
25
26
27

28 **Conclusion**

29
30
31 Even though *in vivo* studies are still required to understand and clarify the underlying
32
33 mechanisms of such effects, the available fundamental and clinical data regarding drug safety
34
35 should be considered. Actions should be undertaken particularly because these drug safety
36
37 issues meet a body of evidence around the misuse and overprescribing of PPIs worldwide. As
38
39 written by Lanas, even if the most of these adverse events have been mainly detected in
40
41 observational studies, these potential adverse events should not be dismissed [2]. The
42
43 magnitude of the use of these compounds, the high level of inappropriate use prescription
44
45 worldwide, together with their potential association with serious adverse events, although low
46
47 in frequency, may represent vast numbers of patients in absolute terms.
48
49
50

51
52 From now, these preliminary data should impose a very cautious attitude in the prescription of
53
54 PPIs, especially in elderly individual and/or in the context of chronic use, even though the
55
56 mechanisms involved in reported safety issues still have to be clarified. Awareness should be
57
58
59
60
61

1 raised among prescribers both in hospital and primary care settings. Patients with PPIs
2 prescription, especially those who are on long term therapy, should be regularly reviewed by
3
4 their general practitioner. All patients admitted at hospital with a PPI prescription should also
5
6 be reviewed for reassessment of the real need of maintaining their treatment. These
7
8 educational initiatives should be implemented by regulatory authorities in order to limit
9
10 inappropriate prescribing of PPI and keep these therapies well-used. Such initiatives should
11
12 also be supported by warnings from regulatory authorities, especially given the recent safety
13
14 concern raised about long-term use of PPI.
15
16
17
18
19
20
21
22
23
24
25
26
27
28
29
30
31
32
33
34
35
36
37
38
39
40
41
42
43
44
45
46
47
48
49
50
51
52
53
54
55
56
57
58
59
60
61
62
63
64
65

Figure 1 : Plausible biological mechanisms leading to vascular events, nephrotoxicity and dementia

1
2
3
4
5
6
7
8
9
10
11
12
13
14
15
16
17
18
19
20
21
22
23
24
25
26
27
28
29
30
31
32
33
34
35
36
37
38
39
40
41
42
43
44
45
46
47
48
49
50
51
52
53
54
55
56
57
58
59
60
61
62
63
64
65

References

- [1] Kantor ED, Rehm CD, Haas JS, Chan AT, Giovannucci EL. Trends in Prescription Drug Use Among Adults in the United States From 1999-2012. *JAMA*. 2015 Nov 3;314(17):1818-31.
- [2] Lanas A. We are using too many PPIs, and we need to stop: a European perspective. *Am J Gastroenterol* 2016;111:1085–6.
- [3] ANSM. Vente des Médicaments en France : le rapport d'analyse de l'année 2013 <http://ansm.sante.fr/S-informer/Presse-Communiqués-Points-presse/Ventes-de-medicaments-en-France-le-rapport-d-analyse-de-l-annee-2013-Communiqué>
- [4] Pottegård A, Broe A, Hallas J, de Muckadell OB, Lassen AT, Lødrup AB. Use of proton-pump inhibitors among adults: a Danish nationwide drug utilization study. *Therap Adv Gastroenterol*. 2016 Sep;9(5):671-8
- [5] Hollingworth S, Duncan EL, Martin JH. Marked increase in proton pump inhibitors use in Australia. *Pharmacoepidemiol Drug Saf*. 2010 Oct;19(10):1019-24
- [6] Sheen E, Triadafilopoulos G. Adverse effects of long-term proton pump inhibitor therapy. *Dig Dis Sci*. 2011 Apr;56(4):931-50
- [7] Sheikh I, Waghay A, Waghay N, Dong C, Wolfe MM. Consumer use of over-the-counter proton pump inhibitors in patients with gastroesophageal reflux disease. *Am J Gastroenterol*. 2014 Jun;109(6):789-94
- [8] Savarino V, Dulbecco P, de Bortoli N, Ottonello A, Savarino E. The appropriate use of proton pump inhibitors (PPIs): Need for a reappraisal. *Eur J Intern Med*. 2017 Jan;37:19-24
- [9] Thorel J, McCambridge C, Piau A, Secher M, Magre É, Montastruc JL, Bagheri H. Proton pump inhibitors: Real indication or trivialized prescription? *Therapie*. 2016 Dec;71(6):589-593
- [10] Vaezi MF, Yang YX, Howden CW. Complications of Proton Pump Inhibitor Therapy. *Gastroenterology*. 2017 Jul;153(1):35-48
- [11] Gomm W, von Holt K, Thomé F, Broich K, Maier W, Fink A, Doblhammer G, Haenisch B. Association of Proton Pump Inhibitors With Risk of Dementia: A Pharmacoepidemiological Claims Data Analysis. *JAMA Neurol*. 2016 Apr;73(4):410-6
- [12] Tai SY, Chien CY, Wu DC, Lin KD, Ho BL, Chang YH, Chang YP. Risk of dementia from proton pump inhibitor use in Asian population: A nationwide cohort study in Taiwan. *PLoS One*. 2017 Feb 15;12(2):e0171006.
- [13] Arora P, Gupta A, Golzy M, Patel N, Carter RL, Jalal K, Lohr JW. Proton pump inhibitors are associated with increased risk of development of chronic kidney disease. *BMC Nephrol*. 2016 Aug 3;17(1):112.
- [14] Lazarus B, Chen Y, Wilson FP, Sang Y, Chang AR, Coresh J, Grams ME. Proton Pump Inhibitor Use and the Risk of Chronic Kidney Disease. *JAMA Intern Med*. 2016 Feb;176(2):238-46
- [15] Shah NH, LePendu P, Bauer-Mehren A, Ghebremariam YT, Iyer SV, Marcus J, Nead KT, Cooke JP, Leeper NJ. Proton Pump Inhibitor Usage and the Risk of Myocardial Infarction in the General Population. *PLoS One*. 2015 Jun 10;10(6):e0124653. doi: 10.1371
- [16] Wang YF, Chen YT, Luo JC, Chen TJ, Wu JC, Wang SJ. Proton-Pump Inhibitor Use and the Risk of First-Time Ischemic Stroke in the General Population: A Nationwide Population-Based Study. *Am J Gastroenterol*. 2017 Apr 11.
- [17] Haenisch B, von Holt K, Wiese B, Prokein J, Lange C, Ernst A, Brettschneider C, König HH, Werle J, Weyerer S, Lupp M, Riedel-Heller SG, Fuchs A, Pentzek M, Weeg D, Bickel

H, Broich K, Jessen F, Maier W, Scherer M. Risk of dementia in elderly patients with the use of proton pump inhibitors. *Eur Arch Psychiatry Clin Neurosci*. 2015 Aug;265(5):419-28.

[18] Akter S, Hassan MR, Shahriar M, Akter N, Abbas MG, Bhuiyan MA. Cognitive impact after short-term exposure to different proton pump inhibitors: assessment using CANTAB software. *Alzheimers Res Ther*. 2015 Dec 27;7:79.

[19] Nevado-Holgado AJ, Kim CH, Winchester L, Gallacher J, Lovestone S. Commonly prescribed drugs associate with cognitive function: a cross-sectional study in UK Biobank. *BMJ Open*. 2016 Nov 30;6(11):e012177.

[20] Cassé-Perrot C, Lanteaume L, Deguil J, Bordet R, Auffret A, Otten L, Blin O, Bartrés-Faz D, Micallef J. Neurobehavioral and Cognitive Changes Induced by Sleep Deprivation in Healthy Volunteers. *CNS Neurol Disord Drug Targets*. 2016;15(7):777-801

[21] Xie Y, Bowe B, Li T, Xian H, Balasubramanian S, Al-Aly Z. Proton Pump Inhibitors and Risk of Incident CKD and Progression to ESRD. *J Am Soc Nephrol*. 2016 Oct;27(10):3153-3163.

[22] Xie Y, Bowe B, Li T, Xian H, Yan Y, Al-Aly Z. Long-term kidney outcomes among users of proton pump inhibitors without intervening acute kidney injury. *KidneyInt*. 2017 Jun;91(6):1482-1494

[23] Klatte DCF, Gasparini A, Xu H, de Deco P, Trevisan M, Johansson ALV, Wettermark B, Ärnlöv J, Janmaat CJ, Lindholm B, Dekker FW, Coresh J, Grams ME, Carrero JJ. Association Between Proton Pump Inhibitor Use and Risk of Progression of Chronic Kidney Disease. *Gastroenterology*. 2017 Jun 2. pii: S0016-5085(17)35688-3.

[24] Ho PM, Maddox TM, Wang L, Fihn SD, Jesse RL, Peterson ED, Rumsfeld JS. Risk of adverse outcomes associated with concomitant use of clopidogrel and proton pump inhibitors following acute coronary syndrome. *JAMA*. 2009 Mar 4;301(9):937-44

[25] Charlot M, Grove EL, Hansen PR, Olesen JB, Ahlehoff O, Selmer C, Lindhardsen J, Madsen JK, Køber L, Torp-Pedersen C, Gislason GH. Proton pump inhibitor use and risk of adverse cardiovascular events in aspirin treated patients with first time myocardial infarction: nationwide propensity score matched study. *BMJ*. 2011 May 11;342:d2690.

[26] Charlot M, Ahlehoff O, Norgaard ML, Jørgensen CH, Sørensen R, Abildstrøm SZ, Hansen PR, Madsen JK, Køber L, Torp-Pedersen C, Gislason G. Proton-pump inhibitors are associated with increased cardiovascular risk independent of clopidogrel use: a nationwide cohort study. *Ann Intern Med*. 2010 Sep 21;153(6):378-86.

[27] O'Donoghue ML, Braunwald E, Antman EM, Murphy SA, Bates ER, Rozenman Y, Michelson AD, Hautvast RW, Ver Lee PN, Close SL, Shen L, Mega JL, Sabatine MS, Wiviott SD. Pharmacodynamic effect and clinical efficacy of clopidogrel and prasugrel with or without a proton-pump inhibitor: an analysis of two randomised trials. *Lancet*. 2009 Sep 19;374(9694):989-97.

[28] Pello Lázaro AM, Cristóbal C, Franco-Peláez JA, Tarín N, Aceña Á, Carda R, Huelmos A, Martín-Mariscal ML, Fuentes-Antras J, Martínez-Millá J, Alonso J, Lorenzo Ó, Egido J, López-Bescós L, Tuñón J. Use of Proton-Pump Inhibitors Predicts Heart Failure and Death in Patients with Coronary Artery Disease. *PLoS One*. 2017 Jan 19;12(1):e0169826.

[29] Juurlink DN, Gomes T, Paterson JM, Hellings C, Mamdani MM. Trends in the coprescription of proton pump inhibitors with clopidogrel: an ecological analysis. *CMAJ Open*. 2015 Nov 26;3(4):E428-31.

[30] Shih CJ, Chen YT, Ou SM, Li SY, Chen TJ, Wang SJ. Proton pump inhibitor use represents an independent risk factor for myocardial infarction. *Int J Cardiol*. 2014 Nov 15;177(1):292-7.

[31] Yepuri G, Sukhovshin R, Nazari-Shafti TZ, Petrascheck M, Ghebre YT, Cooke JP. Proton Pump Inhibitors Accelerate Endothelial Senescence. *Circ Res*. 2016 Jun 10;118(12):e36-42.

- [32] Costarelli L, Giacconi R, Malavolta M, Basso A, Piacenza F, Provinciali M, Maggio MG, Corsonello A, Lattanzio F. Different transcriptional profiling between senescent and non-senescent human coronary artery endothelial cells (HCAECs) by Omeprazole and Lansoprazole treatment. *Biogerontology*. 2017 Apr;18(2):217-236
- [33] Brunner H, Cockcroft JR, Deanfield J, et al. Endothelial function and dysfunction. Part II: Association with cardiovascular risk factors and diseases. A statement by the Working Group on Endothelins and Endothelial Factors of the European Society of Hypertension. *J Hypertens* 2005;23:233–46
- [34] Ghebremariam YT, LePendu P, Lee JC, Erlanson DA, Slaviero A, Shah NH, Leiper J, Cooke JP. Unexpected effect of proton pump inhibitors: elevation of the cardiovascular risk factor asymmetric dimethylarginine. *Circulation*. 2013 Aug 20;128(8):845-53
- [35] EMA. 21 July 2016 EMA/PRAC/452657/2016 Corr1 - Pharmacovigilance Risk Assessment Committee (PRAC) http://www.ema.europa.eu/docs/en_GB/document_library/PRAC_recommendation_on_signal/2016/07/WC500210321.pdf
- [36] Mosli HH, Dennis A, Kocha W, Asher LJ, Van Uum SH. Effect of short-term proton pump inhibitor treatment and its discontinuation on chromogranin A in healthy subjects. *J Clin Endocrinol Metab*. 2012 Sep;97(9):E1731-5.
- [37] Angelone T, Mazza R, Cerra MC. Chromogranin-A: a multifaceted cardiovascular role in health and disease. *Curr Med Chem*. 2012;19(24):4042-50
- [38] Tota B, Angelone T, Cerra MC. The surging role of Chromogranin A in cardiovascular homeostasis. *Front Chem*. 2014 Aug 14;2:64.
- [39] Theurl M, Schgoer W, Albrecht K, Jeschke J, Egger M, Beer AG, Vasiljevic D, Rong S, Wolf AM, Bahlmann FH, Patsch JR, Wolf D, Schratzberger P, Mahata SK, Kirchmair R. The neuropeptide catestatin acts as a novel angiogenic cytokine via a basic fibroblast growth factor-dependent mechanism. *Circ Res*. 2010 Nov 26;107(11):1326-35
- [40] Chen Y, Mahata M, Rao F, Khandrika S, Courel M, Fung MM, Zhang K, Stridsberg M, Ziegler MG, Hamilton BA, Lipkowitz MS, Taupenot L, Nievergelt C, Mahata SK, O'Connor DT. Chromogranin A regulates renal function by triggering Weibel-Palade body exocytosis. *J Am Soc Nephrol*. 2009 Jul;20(7):1623-32.
- [41] Böhm The importance of endothelin-1 for vascular dysfunction in cardiovascular disease *Cardiovascular Research*, 2007, 76, 8–18
- [42] Kohan DE. Endothelin, hypertension and chronic kidney disease: new insights. *Curr Opin Nephrol Hypertens*. 2010 Mar;19(2):134-9.
- [43] Dhaun N, Webb DJ, Kluth DC. Endothelin-1 and the kidney--beyond BP. *Br J Pharmacol*. 2012 Oct;167(4):720-31
- [44] Arif F. Nephrotoxic potential of proton pump inhibitors. *Eur J Intern Med*. 2017 Apr 1. pii: S0953-6205(17)30125-
- [45] Cheng FC, Ho YF, Hung LC, Chen CF, Tsai TH. Determination and pharmacokinetic profile of omeprazole in rat blood, brain and bile by microdialysis and high-performance liquid chromatography. *J Chromatogr A*. 2002 Mar 8;949(1-2):35-42.
- [46] Badiola N, Alcalde V, Pujol A, Münter LM, Multhaup G, Lleó A, Coma M, Soler-López M, Aloy P. The proton-pump inhibitor lansoprazole enhances amyloid beta production. *PLoS One*. 2013;8(3):e58837.
- [47] Fallahzadeh MK, Borhani Haghghi A, Namazi MR. Proton pump inhibitors: predisposers to Alzheimer disease? *J Clin Pharm Ther*. 2010 Apr;35(2):125-6.
- [48] Dharmarajan TS, Norkus EP. Does long-term PPI use result in vitamin B12 deficiency in elderly individuals? *Nat Clin Pract Gastroenterol Hepatol*. 2008 Nov;5(11):604-5.
- [49] Lam JR, Schneider JL, Zhao W, Corley DA. Proton pump inhibitor and histamine 2 receptor antagonist use and vitamin B12 deficiency. *JAMA*. 2013 Dec 11;310(22):2435-42.

- 1
2
3
4
5
6
7 [50] Eastley R, Wilcock GK, Bucks RS. Vitamin B12 deficiency in dementia and cognitive
8 impairment: the effects of treatment on neuropsychological function. *Int J Geriatr Psychiatry*.
9 2000 Mar;15(3):226-33.
- 10 [51] Kim G, Kim H, Kim KN, Son JI, Kim SY, Tamura T, Chang N. Relationship of
11 cognitive function with B vitamin status, homocysteine, and tissue factor pathway inhibitor in
12 cognitively impaired elderly: a cross-sectional survey. *J Alzheimers Dis*. 2013;33(3):853-62.
- 13 [52] Daulatzai MA. Cerebral Hypoperfusion and Glucose Hypometabolism: Key
14 Pathophysiological Modulators Promote Neurodegeneration, Cognitive Impairment, and
15 Alzheimer's Disease *Journal of Neuroscience Research* 2017, 95:943–972
- 16 [53] Marlicz W, Koulaouzidis A, Loniewski I, Koulaouzidis G. Letter by Marlicz et al
17 Regarding Article, "Proton Pump Inhibitors Accelerate Endothelial Senescence". *Circ Res*.
18 2016 Jul 8;119(2):e31-2
- 19 [54] Wiedermann CJ, Kiechl S, Dunzendorfer S, Schratzberger P, Egger G, Oberhollenzer F,
20 Willeit J. Association of endotoxemia with carotid atherosclerosis and cardiovascular disease:
21 prospective results from the Bruneck Study. *J Am Coll Cardiol*. 1999 Dec;34(7):1975-81
- 22 [55] Vaiserman AM, Koliada AK, Marotta F. Gut microbiota: A player in aging and a target
23 for anti-aging intervention. *Ageing Res Rev*. 2017 May;35:36-45.
- 24 [56] Caracciolo B, Xu W, Collins S, Fratiglioni L. Cognitive decline, dietary factors and gut-
25 brain interactions. *Mech Ageing Dev*. 2014 Mar-Apr;136-137:59-69.
- 26 [57] Perrin S, Cremer J, Faucher O, Reynes J, Dellamonica P, Micallef J, Solas C, Lacarelle
27 B, Stretti C, Kaspi E, Robaglia-Schlupp A, Nicolino-Brunet C, Tamalet C, Lévy N, Poizot-
28 Martin I, Cau P, Roll P. HIV protease inhibitors do not cause the accumulation of prelamin A
29 in PBMCs from patients receiving first line therapy: the ANRS EP45 "aging" study. *PLoS*
30 *One*. 2012;7(12):e53035.
- 31
32
33
34
35
36
37
38
39
40
41
42
43
44
45
46
47
48
49
50
51
52
53
54
55
56
57
58
59
60
61
62
63
64
65

1
2
3
4
5
6
7
8
9
10
11
12
13
14
15
16
17
18
19
20
21
22
23
24
25
26
27
28
29
30
31
32
33
34
35
36
37
38
39
40
41
42
43
44
45
46
47
48
49

Table 1 Published positive pharmacoepidemiological studies assessing a potential association between IPP and adverse events (dementia, chronic kidney disease and vascular events such as stroke or myocardial infarction)

Potential adverse effects	Authors (date) Country	Journal	Design	Study period	Principal Endpoints	Main results
Dementia	Haenisch et al (2015) Germany	Eur Arch Psychiatry Clin Neurosci	Longitudinal multicenter cohort study in the German Study on Aging, Cognition and Dementia in primary care cohort (AgeCoDe)	18 month	Diagnosis of dementia or Alzheimer's disease (Structured Interview for Diagnosis of Dementia of Alzheimer type – SIDAM; DSM IV and ICD-10)	HRa, 1.38, 95 % CI, 1.04–1.83 (Dementia) HRa, 1.44, 95 % CI, 1.01–2.06 (Alzheimer's disease)
Dementia	Gomm et al (2016) Germany	JAMA neurology	Prospective cohort study in the Allgemeine Ortskrankenversicherung database (largest German statutory health insurer)	2004-2011	Diagnosis of incident dementia (ICD-10)	HRa, 1.44; 95% CI, 1.36-1.52
Dementia	Tai et al (2017) Taiwan	Plos one	Retrospective study in the Taiwan's national Health Insurance research Database	2000-2003	hospitalization for dementia, and a diagnosis made by a neurologist or psychiatrist (ICD-9)	HRa, 1.22; 95% CI 1.05 ± 1.42 HRa, 1.19; 95% CI 0.95±1.48 (cumulative PPI use)
Chronic Kidney	Xie et al	J Am Soc Nephrol	Retrospective study in the US Department of	2006-2008	Incident CKD : two eGFRs 60	HRa, 1.28; 95%CI, 1.23-1.34 (CKD)

1
2
3
4
5
6
7
8
9
10
11
12
13
14
15
16
17
18
19
20
21
22
23
24
25
26
27
28
29
30
31
32
33
34
35
36
37
38
39
40
41
42
43
44
45
46
47
48
49

disease	(2016) USA		veterans affairs cohort using a propensity matched score		ml/min per 1.73 m2 least 90 days apart Kidney disease progression: eGFR decline over 30% ESRD (including participants with AKI)	HRA, 1.32; 95%CI, 1.23-1.34 (> 30% decline in eGFR) HRA, 1.96 ; 95%CI, 1.21 to 3.18 (ESRD) Graded association between duration of PPI exposure and risk of renal outcomes
Chronic Kidney disease	Lazarus et al (2016) USA	JAMA internal medicine	Atherosclerosis Risk in Communities (ARIC) cohort & Geisinger Health System (GHS) cohort linked to the United States Renal Data System registry Case control study	1996-2011 1997-2014	CKD AKI (ICD-9-CM or ICD-10-CM)	CKD ARIC cohort: HRA, 1.50; 95%CI, 1.14-1.96 GSH cohort: HRA, 1.17; 95%CI, 1.12-1.23 AKI ARIC cohort: HRA, 1.64; 95%CI, 1.22-2.21 GSH cohort: HRA, 1.31; 95%CI, 1.22-1.42
Chronic Kidney disease	Arora et al (2016) USA	BMC Nephrology	Retrospective study in the Veterans Affairs Health Care Upstate New York (VISN2) network Case control study	2001-2008	CKD Death (ICD)	OR, 1.10; 95 % CI 1.05–1.16 (CKD) OR, 1.76; 95 % CI 1.67–1.84 (mortality)
Chronic Kidney disease	Xie et al (2017) USA	Kidney International	Retrospective study in the US Department of veterans affairs cohort using a propensity matched score	2006-2008	Incident CKD: two eGFRs 60 ml/min per 1.73 m2 least 90 days apart eGFR decline	HRA, 1.19; 95% CI, 1.15-1.24 ((eGFR) under 60 ml/min/1.73m2) HR, 1.26; 95% CI, 1.20-1.33 (CKD) HRA, 1.22; 95% CI, 1.16-1.28) (eGFR decline over 30%)

1
2
3
4
5
6
7
8
9
10
11
12
13
14
15
16
17
18
19
20
21
22
23
24
25
26
27
28
29
30
31
32
33
34
35
36
37
38
39
40
41
42
43
44
45
46
47
48
49

					over 30% ESRD or eGFR decline over 50% (excluding participants with AKI)	HRa, 1.30; 95% CI, 1.15-1.48 (ESRD or eGFR decline over 50%)
Chronic Kidney disease	Klatte et al (2017) Sweden	Gastroenterology	Retrospective study in the Stockholm creatinine measurements database	2007-2010.	Progression CKD: doubling of creatinine or decrease in eGFR > 30% ESRD AKI	HRa, 1.26; 95% CI, 1.05-1.51 (doubling creatinine) HRa, 1.26; 95% CI, 1.16-1.36 (decrease in eGFR > 30%) HRa, 2.40; 95% CI, 0.76-7.58 (ESRD) HRa, 1.30; 95% CI, 1.00-1.69 (AKI) Graded association between cumulative exposure to PPIs and risk of CKD progression
Cardiovascular events (Myocardial infarctus)	Juurink et al (2013) Ontario-Canada	Plos One	Ontario Drug Benefit Claims Database & Canadian Institute for Health Information's Discharge Abstract Database (CIHI-DAD) & Health Insurance Plan Database Self-matched case series method in	1996-2008	hospitalization for acute myocardial infarction and hospitalization for heart failure ((ICD-9-CM or ICD-10-CM)	OR 1.8; 95% CI 1.7-1.9 (acute myocardial infarction) OR 1.8; 95% CI 1.7-1.9 (heart failure)
Cardiovascular events (Myocardial infarctus)	Shih et al (2014) Taiwan	Int J Cardiology	Longitudinal Health Insurance Database (LHID) propensity score - matching analyses & case-crossover study	2000-2009	hospitalization for myocardial infarction (ICD9-CM)	Propensity score -matching analyses HRa, 1.58; 95% CI, 1.11-2.25 Case-crossover study OR, 4.61; 95% CI, 1.76-12.07, 7-day window OR, 3.47; 95% CI, 1.76-6.83, 14-day window

1
2
3
4
5
6
7
8
9
10
11
12
13
14
15
16
17
18
19
20
21
22
23
24
25
26
27
28
29
30
31
32
33
34
35
36
37
38
39
40
41
42
43
44
45
46
47
48
49

Cardiovascular events (Stroke)	Wang et al (2017) (Taiwan)	American Journal of Gastroenterology	Retrospective study in the Taiwan Health Insurance database Nested case control design and propensity score matched analysis	2002-2013	hospitalization with a primary diagnosis of ischemic stroke (ICD-9-CM)	HRa, 1.36; 95% CI, 1.14–1.62 (propensity score) HRa, 1.77; 95% CI 1.45–2.18 within 30 days (nested case control design)

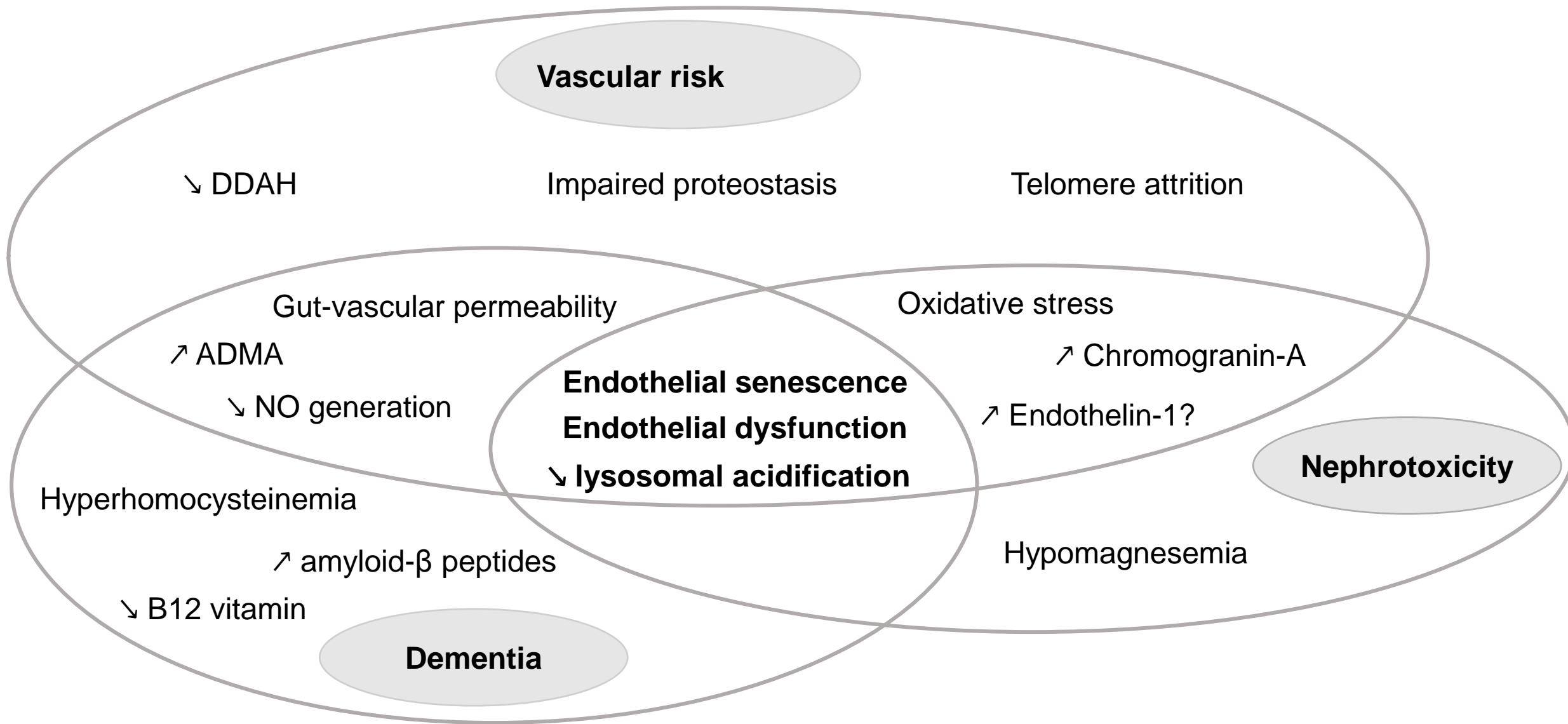


Figure 1: Plausible biological mechanisms leading to vascular events, nephrotoxicity and dementia