



Benthic ecology of tropical coastal lagoons: Environmental changes over the last decades in the Términos Lagoon, Mexico

Christian Grenz, Renaud Fichez, Carlos Álvarez Silva, Laura Calva Benítez, Pascal Conan, Adolfo Contreras Ruiz Ruiz, Lionel Denis, Silvia Díaz Ruiz, P. Douillet, Margarita E. Gallegos Martinez, et al.

► To cite this version:

Christian Grenz, Renaud Fichez, Carlos Álvarez Silva, Laura Calva Benítez, Pascal Conan, et al.. Benthic ecology of tropical coastal lagoons: Environmental changes over the last decades in the Términos Lagoon, Mexico. *Comptes Rendus Géoscience*, 2017, 349 (6-7), pp.319 - 329. 10.1016/j.crte.2017.09.016 . hal-01667428

HAL Id: hal-01667428

<https://amu.hal.science/hal-01667428>

Submitted on 27 Apr 2018

HAL is a multi-disciplinary open access archive for the deposit and dissemination of scientific research documents, whether they are published or not. The documents may come from teaching and research institutions in France or abroad, or from public or private research centers.

L'archive ouverte pluridisciplinaire **HAL**, est destinée au dépôt et à la diffusion de documents scientifiques de niveau recherche, publiés ou non, émanant des établissements d'enseignement et de recherche français ou étrangers, des laboratoires publics ou privés.

Benthic ecology of tropical coastal lagoons: environmental changes
over the last decades in Terminos Lagoon, Mexico

Christian Grenz^{*1}, Renaud Fichez¹, Carlos Álvarez Silva², Laura Calva Benítez², Pascal Conan³, Adolfo Contreras Ruiz Esparza⁴, Lionel Denis⁵, Silvia Díaz Ruiz², Pascal Douillet¹, Margarita E. Gallegos Martinez², Jean-François Ghiglione³, Francisco José Gutiérrez Mendieta², Montserrat Origel-Moreno¹, Antonio Zoilo Marquez Garcia², Alain Muñoz Caravaca⁶, Mireille Pujo-Pay³, Rocío Torres Alvarado², Jorge Zavala-Hidalgo⁵

¹ Aix-Marseille Université, Université de Toulon, CNRS/INSU, IRD, Mediterranean Institute of Oceanography MIO UM 110, Marseille, France

² Universidad Autónoma Metropolitana, Departamento de Hidrobiología, México D.F., México

³ UPMC Université Pierre et Marie Curie, CNRS, UMR LOMIC 7621, Laboratoire ARAGO, Avenue Fontaulé, BP44, F-66650 Banyuls-sur-Mer, France

⁴ Universidad Nacional Autónoma de México, Centro de Ciencias de la Atmósfera, México D.F., Mexico

⁵ Université Lille 1: Sciences et Technologies, UMR CNRS 8187 LOG, Wimereux, France,

⁶ Centro de Estudios Ambientales de Cienfuegos, Carretera Castillo de Jagua, Km 1 ½, AP. 5, CP. 59350 Cienfuegos, Cuba

*Correspondence: christian.grenz@mio.osupytheas.fr

Abstract

Terminos Lagoon is a 2000 km² wide coastal lagoon linked to the largest river catchment in Mesoamerica. Economic development, together with its ecological importance, led the Mexican government to pronounce Terminos Lagoon and its surrounding wetlands as a Federal protected area for flora and fauna in 1994. It is characterized by small temperature fluctuations but with two distinct seasons (wet and dry) that control the biological, geochemical and physical processes and components. This paper presents a review of available information on Terminos Lagoon. The review shows that diversity of benthic communities is structured by the balance between marine and riverine inputs and that this structuration strongly influences the benthic metabolism and its coupling with the biogeochemistry of the water column. The paper also presents a number of specific drivers and recommendations for a long term environmental survey strategy in the context of expected Global Change in the Centro America region.

Keywords: Multidisciplinary Study; Ecosystem; Estuaries; Coastal lagoon; Terminos Lagoon; Mexico

1 Introduction

In recent years, global concern has arisen concerning the risks of decline in Marine ecosystem health and the associated functions and services they provide. This has brought about a number of innovative studies and much path-breaking research and has led to the development of guidance and policies worldwide. Most of this information underlines the need to observe and manage the state of marine ecosystems as a whole (Tett et al., 2013, Grand Challenge 4 in Borja, 2014). Moreover, scientific literature about marine ecosystems has increased exponentially during the last 15 years (Borja, 2014). Coastal ecosystems are likely to have been altered substantially by human activities and probably also by climate drivers of change (climate change related key drivers) (Parry et al., 2007). As stated by Halpern et al. (2008) no marine system is unaffected by human influence and a large fraction (41%) is strongly affected by multiple drivers.

Marine ecosystems are highly diverse given their biogeographical characteristics on a global scale. Their morphology controls internal hydrodynamics and exchanges with the adjacent sea, regulating in this way the level of anthropogenic pressures and sensitivity to eutrophication (Kennish, 2002). Semi-enclosed coastal systems (SECS), which usually include open, leaky and choked lagoons and transitional waters (EU, 2000), are sentinel systems and hotspots of coastal vulnerability at a global scale (Newton & Weichselgartner, 2014; Newton et al., 2014 and references therein). Because of the physical connection between the benthic layer and the whole water column, the geochemical and biological dynamics extensively depend on benthic-pelagic interactions.

Terminos Lagoon in the southern Gulf of Mexico is one of the largest lagoons situated in the intertropical zone. Considering the extension and shallowness of Terminos Lagoon as well as its potential sensitivity to environmental change, the objective of this paper is to review and combine existing information on what has been identified as a model tropical coastal lagoon in the Gulf of Mexico (García-Ríos et al., 2013) where seasonal signals are distinct from those in temperate regions. The following sections present an overview of the general features of Terminos Lagoon, as well as hydrodynamic characteristics, and benthic habitats with special attention to trophic status and benthic communities as they strongly contribute, together with external loadings, to the biogeochemistry of the water column. In the context of expected Global Change in the Centro America region, the present review also presents a number of specific drivers of change and pressures including land-use, watershed management, river inputs, coastal erosion processes and contaminant levels, to assess what major changes can be expected and what effect they might have on the current environmental status, finally issuing recommendations for a long term environmental survey strategy.

2. General features

Terminos Lagoon borders the southern Gulf of Mexico in Campeche and is, by area and volume, Mexico's second largest estuarine system. The lagoon borders two geologic provinces: to the east the Yucatan Peninsula (low rainfall, calcareous soils, and very low surface drainage) and to the west and south the lowlands of Tabasco and the highlands of Chiapas and Guatemala, an area of high rainfall and fluvial soils (Fig. 1). Three main rivers discharge directly into the lagoon: the Candelaria, the Chumpan, and the Palizada (a tributary of the Grijalva-Usumacinta) with a catchment area totaling 49 700 km².

69 The average freshwater flow rate is approximately $12.5 \cdot 10^9 \text{ m}^3 \text{ yr}^{-1}$, with the Palizada River catchment area on the
70 western coast of the lagoon accounting for most of the fresh water inputs. Tidal regime is mixed, mostly diurnal with a
71 mean range of 0.3 m (Contreras Ruiz Esparza et al, 2014).

72 The continental shelf (Campeche Sound) is one of the most important fishery areas in the western central Atlantic region.
73 Campeche Sound (Tabasco/Campeche) contributes 34% of the total Mexican fishery yield in the Gulf and Caribbean
74 coasts, including penaeid shrimps, mollusks, demersal and pelagic fishes (CONAPESCA, 2008).

75 Parallel to fisheries, crude oil extraction in the Gulf of Mexico represents a large economic activity with, Petroleros
76 Mexicanos (PEMEX), a major non-OPEC oil producer (top 10) operating here since 1938. PEMEX is a state-owned
77 company extracting around 2 million barrels per day in Bahia de Campeche (Cantarell oil field). More significantly,
78 revenues from the oil industry (including taxes and direct payments from PEMEX) accounted for about 32% of total
79 Mexican government revenues in 2013. This activity has generated the urban development of Ciudad del Carmen, the
80 largest town (located on the western tip of the island) and in 1994, it contributed to a great extent to the declaration of
81 Terminos Lagoon as a Protected Area of Flora and Fauna (APFFLT). Ten years later the lagoon was designated as a
82 wetland of international importance (RAMSAR) and today represents the largest such zone in Mexico, at 705,016
83 hectares (www.ramsar.org). Unfortunately, PEMEX's activity continues to grow within the protected area, potentially
84 threatening the whole ecosystem through accidental oil spills and pipeline leaks (e.g. Ixtoc-1 in 1979-1980).

85 The vast wetlands surrounding Terminos Lagoon provide ideal conditions for the migration and breeding of numerous
86 species such as sea bass, shellfish, shrimp, and manatees, amongst others. This area also harbors the highest
87 concentration of dolphins in the Gulf. This protected area is also one of the most important bird wintering areas in the
88 Gulf of Mexico and its level of marine and terrestrial flora and fauna diversity is considered as very high (Yáñez-
89 Arancibia et al., 1988). The coastal fringe is occupied by vast areas of mangroves and the lagoon comprises various
90 habitats including important oyster and sea grass beds (Moore & Wetzel, 1988).

91 The area presents two climatic seasons (Yáñez-Arancibia et al., 1983): the rainy season (Jun-Sep) and the dry period
92 which splits into a period with dominant north winds and winter storms (Nov-Mar) and a second with lower wind forcing
93 (Feb-May). The average evaporation is 1512 mm a^{-1} and the average rainfall is 1805 mm a^{-1} (Yáñez-Arancibia & Day,
94 1988). Nevertheless, a strong variability in rainfall and subsequent freshwater discharge to the lagoon has recently been
95 linked to climate variability and to the ENSO regime (Fichez et al., 2017).

96 Terminos Lagoon stretches over more than 2000 km^2 (Fig. 1). The lagoon is connected to the sea through two inlets:
97 'Carmen Inlet' on the western side (4 km width) and 'Puerto Real Inlet' on the eastern side (3.3 km width). These are
98 separated by a carbonate-rich barrier (Carmen Island, 30 km long and 2.5 km wide). Terminos Lagoon is shallow with
99 an average depth of 2.4 m, with the exception of the tidal flats and the deep channel on the eastern part of each inlet.

100 The eastern entrance is influenced by transparent marine waters which form an interior delta. In the western inlet, the
101 suspended terrigenous materials of the Palizada River estuary, generate high turbidity and contribute to the formation of
102 an exterior delta oriented towards the west in the Gulf of Mexico.

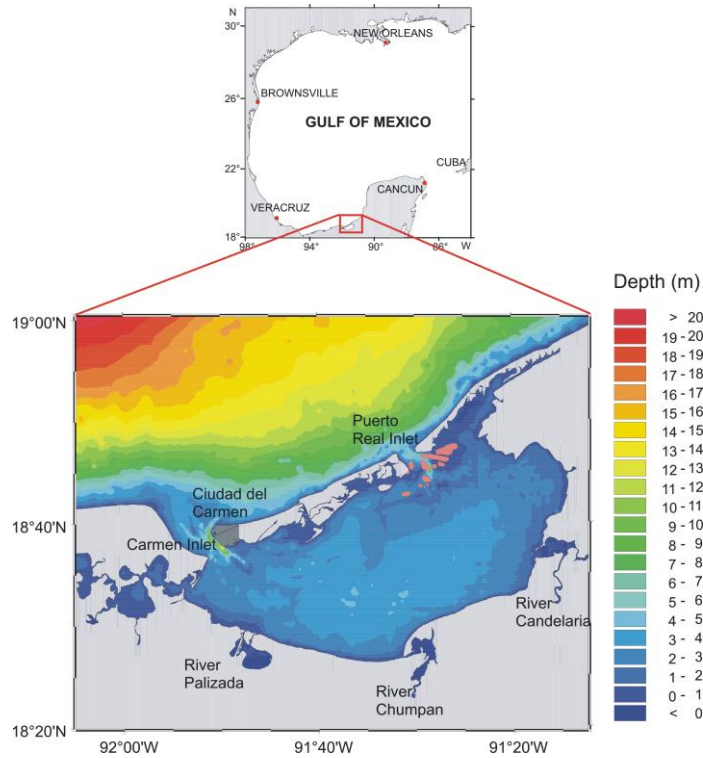


Fig. 1. Bathymetric map of the study area with major rivers and connections to the Gulf of Mexico.

Waters are mostly oligo- to mesohaline, with a tendency to euhaline in some parts of the system; the east inlet is characterized by marine waters whereas the west inlet is mesohaline to oligohaline near the river mouths (Bach et al., 2005). Predominant sediments are silt and clay, with calcareous sands (shells and shell fragments) present in the eastern part and close to the barrier island only. The sediments of the western part are silty-clay (Yáñez-Arancibia et al., 1983). A study by Yáñez-Correa (1963) compared the sediment structures of both inlets, and showed that sediment accumulation outside Carmen Inlet in the west contributed to the formation of a small alluvial delta outside the lagoon, due to the predominant seaward direction of the currents. Conversely, in the east at Puerto Real Inlet, the existence inside the lagoon of a submarine alluvial delta composed of coarse sediment fraction of marine origin reveals an inward component of the currents; one of the main sources of sediments is thus offshore derived waters entering the lagoon. The few published studies dealing with hydrodynamic modeling in Terminos Lagoon (Kjerfve et al., 1988; Jensen et al., 1989; Contreras Ruiz Esparza et al, 2014) converge to describe a general circulation pattern from east to west, with a net westward transport of the water masses entering the lagoon through Puerto Real Inlet and exiting through Carmen Inlet during the dry season, and a dominant net export of water through both inlets during the wet period. Tidal effects combined with freshwater inputs tend to bend the southwestward current into a cyclonic circulation inside the lagoon - with a vortex core located in the northeast part - while predominant winds from the east (67 % from 45° to 135°) tend to drive the river plumes toward Carmen Inlet (Contreras Ruiz Esparza et al, 2014). Based on tidal current measurements in and around the inlets, David and Kjerfve (1998) estimated that fifty percent of the lagoon water volume was renewed in 9 days. However, long term trends of residence times of the water masses for the whole lagoon remain difficult to estimate, considering that water replacement in Terminos Lagoon does not behave linearly but decays exponentially

(Yanez-Arancibia & Day, J. 2005). The recent development of a 3-D hydrodynamic modeling approach of Terminos Lagoon accounted for tidal forcing only (Contreras Ruiz Esparza et al, 2014) and thus prevented the computing of water mixing and renewal indicators (Umgiesser 2014). However, a relatively simple water budget could be established using the net freshwater inputs (river + groundwater + net precipitation) previously estimated at $12.5 \cdot 10^9 \text{ m}^3 \text{ yr}^{-1}$ (Fichez et al. 2017) and the water volume of $4.65 \cdot 10^9 \text{ m}^3$ (Contreras Ruiz Esparza et al, 2014), yielding an average flushing time (T_f , Monsen et al., 2002) of 135 days, a value within the 1 to 5 months range previously reported by Robadue et al. (2004) for different seasonal conditions.

3. Water column biogeochemistry

Terminos Lagoon is a “choked” lagoon subject to significant fresh water inputs, so salinity is strongly variable at the spatial as well as temporal scale. Recent results from a survey (currently October 2008 to September 2010, 10 samplings over a network of 34 stations) yielded an average salinity of 25.7 at 1 m depth (standard deviation = 8.1) with values ranging from 3 to 37 (Fichez et al. 2017). Such high variability may be related to the high variability in precipitation and subsequent river discharge, sea level and wind patterns, as documented in Fuentes-Yaco et al. (2001). Nevertheless, the distribution of salinity in Terminos Lagoon for January 2010 (Fig. 2) may be considered as a good example of the general pattern of spatial variability.

Lower salinities are generally measured in the vicinity of Palizada River, with Candelaria and Chumpan Rivers contributing to a lesser extent to freshwater inputs to the lagoon. Highest salinities in the range of 33 to 36, similar to those of adjacent marine waters, are measured close to Puerto Real Inlet and, according to the general hydrodynamic pattern, the more marine water bodies tend to travel to the southwest along the coast of Carmen Island. Salinity varies considerably within the lagoon as a function of the imbalance between those two sources of input.

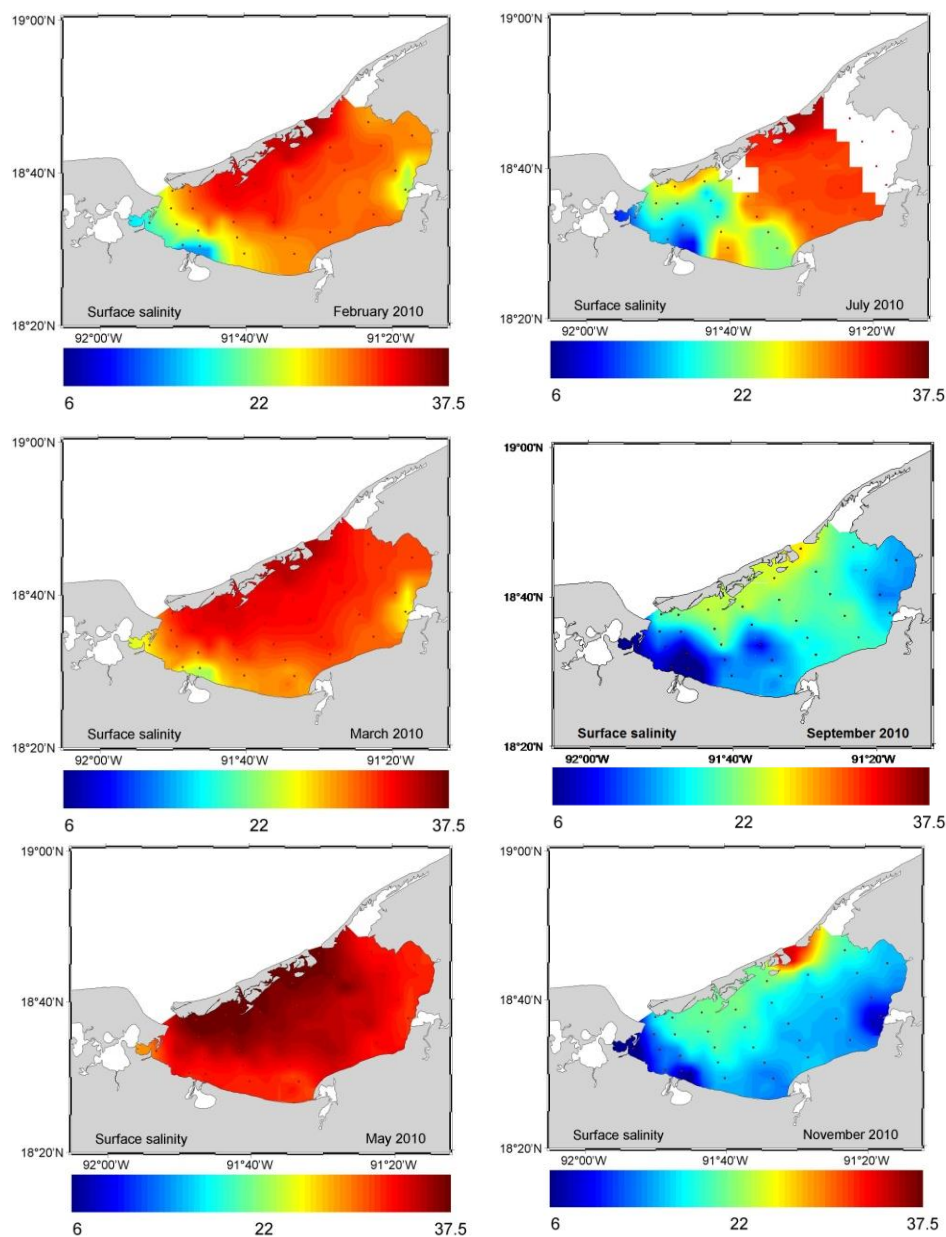
Quite surprisingly, the trophic status (dissolved inorganic and organic material and particulate organic material) of Terminos Lagoon has been poorly documented. Silicate concentrations generally correlate to salinity as freshwater transports huge quantities of silica originating from soil leaching. In the Gulf of Mexico, marine offshore waters have silicate concentration of roughly $2 \mu\text{M}$ whereas coastal waters are generally in the range of $20\text{--}40 \mu\text{M}$. Concentrations in the lagoon are around $70 \mu\text{M}$ on average with strong temporal and spatial variability, as for salinity.

Inorganic nitrogen concentrations generally come within the 0 to $4 \mu\text{M}$ range with some very occasional peaks close to or above $10 \mu\text{M}$ in the vicinity of the Palizada River. Concentrations in the middle of Terminos Lagoon are - in most cases - significantly below $1 \mu\text{M}$. Nitrates + nitrites concentrations are higher during the wet season than during the dry season.

Phosphate (orthophosphate) concentrations come within the 0 to $1.00 \mu\text{M}$ range with an average value of roughly $0.13 \mu\text{M}$. It is clear from the recent study by Conan et al. (2017) that phosphate distribution in the lagoon is for the most part (spatially and temporally) disconnected from nitrogen. During their study, the authors identified the Palizada River and Puerto Real Inlet as the two main sources of NO_3 and NH_4 , whereas PO_4 originated from Candelaria and Chumpan R.

178 inputs, and primarily from the mineralization of organic phosphorus (PP and DOP) by bacterial activity. This impacted
 179 the stoichiometry of particulate organic matter (N:P ratio) throughout the lagoon.

180
 181
 182
 183
 184
 185
 186
 187
 188
 189
 190
 191
 192
 193
 194
 195
 196
 197
 198
 199
 200
 201
 202
 203
 204
 205
 206



207 Fig. 2. Spatial variability in salinity measured in Terminos Lagoon in 2010 during the dry (left) and rainy (right) seasons
 208 (modified from [Fichez et al., 2017](#)).

209

210 When averaged over the whole lagoon, dissolved inorganic N:P ratio ranges from 3:1 to 18:1 with an average value of
 211 9:1, thus suggesting that nitrogen is the most probable element to limit pelagic primary production. However, ratios well
 212 over the 16:1 Redfield Ratio and as high as 353:1 were occasionally measured (mostly close to the Palizada River
 213 mouth), demonstrating that such an assumption must not be applied uniformly to the whole lagoon system.

On average, concentrations in dissolved organic nitrogen and phosphorus are around 15 and 0.6 μM , respectively. Some strong spatial variation can be observed with occasional high concentrations in the north-east part of the lagoon, possibly due to export of organic compounds from the mangrove. On average, concentrations in particulate organic carbon, nitrogen and phosphorus are around 70, 10 and 0.5 μM , respectively.

Chlorophyll a as an indicator of phytoplankton biomass and potential eutrophication process has been more extensively documented. Average concentration in the lagoon, as reported by various authors, ranged broadly between 1 and 10 mg m^{-3} , with the lower values being measured as a whole in Puerto Real and the highest close to the Palizada estuary. Chlorophyll a versus total chloropigment ratio was recorded as being recurrently close to 0.75, demonstrating a relatively healthy population of pelagic primary producers. There is virtually no assessment of primary production barring two publications, which report a gross primary production rate of 478 $\text{g C m}^{-2} \text{a}^{-1}$ at one station of the lagoon (Rivera-Monroy et al., 1998) and variations from 20 to 300 $\text{gC m}^{-2} \text{a}^{-1}$ (Day et al., 1982), suggesting a potential shift from oligotrophic to eutrophic conditions.

A recent study on biogeochemical cycling in Terminos Lagoon has shown that the water column behaves globally as a sink, and in particular as a "nitrogen assimilator" due to the elevated production of particulate and dissolved organic matter and the weak exportation of autochthonous matter to the Gulf of Mexico (Conan et al., 2017). The same study has revealed that "bottom-up" control largely accounts for the observed variability in phytoplankton productivity. Phosphates delivered by Palizada River inputs and strong on site bacterial mineralization of organic matter result in maximal phytoplankton production in the western part of the lagoon.

A nutrient and carbon budget calculated by Reyes et al. (1997) and David (1999) showed that Terminos Lagoon is slightly autotrophic (carbon sink) on a yearly basis with a net production rate of +0.2 $\text{mol C m}^{-2} \text{yr}^{-1}$, even though the authors themselves underlined the fact that such results should be taken with great caution due to the evident gaps in available datasets.

4. Seagrass

Seagrass meadows are known to play a number of important ecological roles in estuarine and shallow-water coastal ecosystems: they enhance primary production and nutrient cycling, stabilize sediments, elevate biodiversity, and provide nursery and feeding grounds for a range of invertebrates and fish. (Orth et al., 2010; Cullen-Unsworth & Unsworth, 2013). The highest productivity of seagrasses is during the dry season as a result of higher water clarity, according to Moore & Wetzel (1988). In Terminos Lagoon, the distribution of the seagrass communities clearly reflects the conditions of water movement, clarity and water salinity. Seagrasses develop denser meadows along the lagoon shoreline of Carmen Island and in particular in the delta of Puerto Real where high water transparency and salinities, and high percentage of calcium carbonate in the sediments, have been measured (Calva & Torres, 2011).

The communities are dominated by the turtle grass *Thalassia testudinum* and in lower density by *Halodule wrightii* (Raz-Guzmán & Barba, 2000). *H. wrightii* grows in the shallowest areas while *T. testudinum* extends down to depths of 3 m (Ortega 1995). Total primary production of *T. testudinum* in the Lagoon is estimated at 260 T a^{-1} (Moore & Wetzel,

1988). Epifauna associated to the seagrass meadows is abundant and includes epibenthic amphipods and their predators, i.e. crustacean species of Hippolyte and Pink shrimp (Negreiros-Fransozo et al., 1996; Corona et al., 2000).

5. Mangroves

Mangrove forests play an important role in the functioning of tropical coastal systems. A classification of mangrove forest based on the importance of hydrodynamic exchange describes different categories that are present in Terminos Lagoon: (1) riverine tidal forests that receive high inputs of freshwater, (2) fringe forests which are flushed regularly by tide, (3) basin forests which are less regularly flushed, and (4) scrub forests which have very slow flushing and low nutrient levels (Lugo & Snedaker, 1974). Terminos Lagoon is bordered almost completely by extensive mangrove swamps composed by three dominant species: *Rhizophora mangle* L. (red mangrove), *Avicenia germinans* L. (black mangrove) and *Laguncularia racemosa* Gaertn.f. (white mangrove) (Day et al., 1987). These authors measured higher productivity near the river mouths, probably caused by a number of factors which include lower salinity, higher nutrient inputs and a lower hydrogen sulfide level due to lower sulfate concentrations in freshwater. Since stresses are lower, productivity is higher, resulting in more available energy for building biomass. The productivity and the extent of mangrove forests in the area are directly related to high fisheries productivity (Yáñez-Arancibia & Day, 1982).

6. Benthic fauna

Besides the importance of benthic diversity that has been underlined in numerous studies (Yáñez-Arancibia & Day, 1988) benthos in Terminos Lagoon represents a major trophic resource, and plays an important role in the biogeochemical budget of such a shallow system.

Ayala-Castañares (1963) and Phleger and Ayala-Castañares (1971) described the taxonomy and the distribution of foraminifers in Terminos Lagoon. They reported densities in the range of 250-900 ind.10 cm⁻², which suggests relatively high rates of organic matter production, probably consecutive to high river runoffs. Their distribution reflects the circulation in the lagoon, with open-gulf foraminifers close to Puerto Real Inlet and along the southeast side of Carmen Island, while lagoon foraminifers occur close to Carmen Inlet. A mixed fluvial assemblage was also observed in and near the river mouths.

Marrón-Aguilar (1975) described the systematic and abundances of polychaetes throughout Terminos Lagoon, while Reveles (1984), focused on polychaete species associated with seagrass beds of *Thalassia testudinum*, and Hernández and Solís-Weiss (1991) examined those found in the mangrove *Rhizophora mangle*. In the seagrass beds and mangroves, polychaetes dominated in both abundance and species diversity. Their distribution is closely linked to the salinity gradient, turbidity and sediment types, and three assemblages may be identified: a first group, localized in the eastern part of the lagoon, is mainly characterized by families Spionidae and Cirratulidae. The second group is located in the central part and the south of the lagoon, with families Cirratulidae and Lumbrinereidae, while the third group located close to Carmen Island is characterized by families Capitellidae and Nereidae.

285 Mollusks have received extensive attention due to the exploitation of two bivalve species. [García-Cubas \(1988\)](#)
286 published a review of all the mollusks encountered in this lagoon, and several studies have been carried out on the
287 exploited bivalves *Rangia cuneata* and *Crassostrea virginica*, mainly concerning their distribution ([Ruiz, 1975](#)), the
288 physiology of their reproduction ([Rogers-Nieto and García-Cubas, 1981](#)) as well as the behaviour of larval stages
289 ([Chávez, 1979](#)).

290 Based on previous works, [García-Cubas \(1988\)](#) identified four typical subsystems in Terminos Lagoon: a- Interior
291 lagoon (western part of the area, but with limited connections to Terminos Lagoon - salinity lower than 10 in summer
292 periods) associated with rivers and characterized by 3 bivalve species of commercial interest (*Rangia flexuosa*, *R.*
293 *cuneata* and *Polymesoda caroliniana*); b- lagoons joined to the southwest part of Terminos Lagoon where naturally
294 occurring reefs of *Crassostrea virginica* and their typically associated community are found (salinity in the range 0-15);
295 c- The main lagoon central basin, where eight gastropod species and nine bivalve species constitute the mollusk
296 community and are submitted to a wide range of salinity throughout the year (10-36); d- An area of strong marine
297 influence located close to Carmen Island (salinity ranging from 28 to 38), where a broad community of eight gastropods
298 and nine bivalves dominates, mainly in association with *Thalassia testudinum* beds.

299
300 Additional extensive studies have been conducted on fish distributions in the lagoon. Most fish have a direct trophic link
301 with benthic macrofauna ([Yáñez-Arancibia and Day, 1988](#)), even if only 10% of the species are permanent residents in
302 the lagoon (45% use the lagoon as a nursery, and 45% are occasional visitors). While half of the fishes are primarily
303 carnivorous, a quarter are higher carnivorous and the last quarter is constituted of herbivorous, detritivorous or
304 omnivorous fishes. A maximal juvenile flow into the lagoon was recorded in September-November, mainly via Puerto
305 Real inlet.

306 As described above, the diversity of benthic communities is strongly structured by the balance between marine and
307 riverine inputs and this structuration strongly influences the benthic metabolism and its coupling with the
308 biogeochemistry of the water column.

309

310 **7. Benthic metabolism**

311 Dissolved and particulate exchanges between sediments and the water column remain poorly documented, and most
312 budgets are based on the assumption that the benthic boundary layer is in balance ([Gomez-Reyes et al., 1997](#); [David,](#)
313 [1999](#)). Studies of sediment-water exchanges of nutrients remain poorly documented, except in the mangrove forest
314 ([Rivera-Monroy et al., 1995](#); [Day et al., 1996](#)) or seagrass beds of *Thalassia testudinum*.

315

316 In a fringe mangrove, sediment and nitrogen exchanges at the sediment-water interface have been estimated using a 12
317 m-long flume extended through a fringe forest from a tidal creek to a basin forest. [Rivera-Monroy et al. \(1995\)](#)
318 demonstrated that the tidal creek was the main source of ammonium ($0.53 \text{ g m}^{-2} \text{ a}^{-1}$) and nitrate and nitrite ($0.08 \text{ g m}^{-2} \text{ a}^{-1}$),
319 while the basin forest was the principal source of total suspended sediments ($210 \text{ g m}^{-2} \text{ a}^{-1}$). On the contrary, net
320 export of particulate nitrogen occurred from the fringe forest to the tidal creek ($0.52 \text{ g m}^{-2} \text{ a}^{-1}$), while less particulate

nitrogen was exported to the basin forest ($0.06 \text{ g m}^{-2} \text{ a}^{-1}$). They also demonstrated that the exchanges were highly variable with seasonal weather forcing, as salinity (hence nutrient concentrations) in the creek was influenced by inputs from rainfall and river discharge to the lagoon. Moreover, as the Carbon to Nitrogen ratio of particulate matter exported during ebb tides was generally higher than particulate matter imported into the forest during flooding, they suggested that there is a greater nitrogen loss during ebb tide caused by the export of nitrogen deficient detritus from fringe and basin mangroves.

Several works describing nutrient dynamics have been published on *Thalassia testudinum* seagrass beds located off the inner littoral of Carmen Island (Stevenson et al., 1988; Hopkinson et al., 1988; Kemp et al., 1988). Rates of NH_4 regeneration in sediments of *T. testudinum* beds were ten times higher in surficial sediments (0 to 2 cm) than at depth (18 to 20 cm). Turnover-time for ammonium pools in surface sediments were about 1 day. Both anaerobic decomposition and denitrification are important biogeochemical processes in Terminos Lagoon seagrass beds and rates of ammonium regeneration were sufficient to supply >70% of the nitrogen required for seagrass growth in this system (Kemp et al., 1988). Nitrogen uptake measured in intact cores showed low rates ranging from $0.8 \mu\text{molN m}^{-2} \text{ d}^{-1}$ in February ('Nortes') to $50 \mu\text{molN m}^{-2} \text{ d}^{-1}$ in August (rainy season). Separate nitrogen uptake by leaf, root, rhizome, and sediment components measured in small serum bottles suggest that N fixation provides 10 to 40% of nitrogen demand of the seagrasses (Stevenson et al., 1988). The highest uptake rates occurred just prior to the *Thalassia testudinum* production peak in February (Rojas-Galaviz et al., 1992). Measurements of stocks of organic and inorganic nitrogen in sediment, water and the biota indicates that biotic stocks of $13220 \mu\text{mol m}^{-2}$ dominated abiotic stocks of $19 \mu\text{mol m}^{-2}$ of nitrogen in the *Thalassia* system, with less than 0.2% of the nitrogen being in the inorganic form (Hopkinson et al., 1988). A large percentage of the total organic nitrogen pool (94%) is contained in dead material (746 versus $12610 \mu\text{mol m}^{-2}$, living and dead material, respectively) and 97% of the organic nitrogen is located in the sediments, as opposed to the water column. Approximately 75% of the inorganic nitrogen is in the sediments, as opposed to the water column (Hopkinson et al., 1988), while inorganic nitrogen uptake requirements are 7.5, 2.5, and $4.0 \text{ mmol N m}^{-2} \text{ d}^{-1}$ for phytoplankton, epiphytes and *T. testudinum*, respectively. The nitrogen turnover times ranged from less than 1 day for inorganic nitrogen in the water column to over 3000 days for sedimentary organic nitrogen (Hopkinson et al., 1988).

8. Drivers of environmental change

Terminos Lagoon and its surrounding wetlands are oppositely impacted by their conservation status and by human development pressure. Urbanization, wastewater discharge, industrialization, alteration of the hydrologic regime, agricultural and cattle production, petroleum extraction and fishing have been exhaustively addressed as the most important deleterious issues (Robadue 2004). Land cover is one of the most systemic indicators of environmental change in the protected area surrounding Terminos Lagoon. Between 1974 and 2001, 31 % of the area was detrimentally affected, resulting mainly from the replacement of tropical forest and mangroves by grassland and urban areas (Soto-Galera et al., 2010).

Between 1986 and 2001 however, the protected status of Terminos Lagoon prompted some positive action in terms of environmental restoration and protection, allowing to reduce losses in natural habitats by half and demonstrating the

357 potential of efficient remediation strategies. A mangrove restoration experiment headed by the Gulf of Mexico Large
358 Marine Ecosystem Based Assessment and Management Project (GEF LME-GoM) identified increasing salinity in the
359 porewater of mangrove soils as responsible for the most long term deleterious effects and defined remediation based on
360 hydrological restoration and local community involvement which yielded an inversion in the recessing mangrove
361 dynamics (Zaldivar-Jiménez et al., 2017).

362 Currently, the fluvial-lagoon systems of Terminos Lagoon are disturbed. According to Herrera et al. (2002) and
363 EPOMEX (2002), the zones having registered the most change are the river-mouths of the three main rivers (the
364 Candelaria, the Chumpan, and the Palizada), due to excessive inputs of terrigenous materials and growth of oyster reefs.
365 According to Márquez-García (2010), about 30% of the lagoon is in the process of sediment deposition meaning that
366 the lagoon is facing a major sediment accumulation problem. The formation of an internal delta at the mouth of Puerto
367 Real involves the retention of sandy sediments in Terminos Lagoon due to the decrease in current velocity within the
368 system. Conversely, the processes of erosion-deposition in the lagoon generate changes in the depth of the system and
369 erosive morphology of some parts of the coastal area. This can lead to various problems ranging from the siltation or
370 death of seagrasses to constraints in small boat navigation. Approximately 42 m of beach have been lost in the eastern
371 side of Puerto Real Inlet, a process aggravated by poorly engineered breakwaters that partially disrupt littoral transport
372 (Márquez-García et al., 2013). These changes primarily in the east part of the lagoon have likely transformed the
373 biogeochemical characteristics of the sediments, thus impacting the distribution of benthic species and lagoon
374 biodiversity.

375 Significant changes in fish population have been reported since 1980, including alteration in fish taxonomic and
376 functional diversity combined, with decreases of 41 % and 58 % in fish abundance and biomass, respectively (Ramos
377 Miranda et al., 2005; Villéger et al., 2010; Sirot et al., 2015, Abascal-Monroy et al., 2016; Sirot et al., 2017). Such
378 changes in biota have been tentatively linked to a loss of favorable habitats and a sustained increase in salinity due to
379 decreasing river inputs to the lagoon (Sosa-Lopez et al., 2007). However, such a sustained trend in salinity increase is
380 supported neither by long term surveys of rainfall and river discharge, nor by modeling outputs that foresee stability in
381 rainfall during the first half of the 21st century. The observed differences have been related to strong inter-annual
382 variability in runoff, potentially related to ENSO conditions (Fichez et al., 2017). It is true, however, that the very same
383 climate change modeling approaches foresee reductions of rainfall by 5 to 30 % in the region during the second half of
384 the 21st century (Biasutti et al., 2012; Hidalgo et al., 2013), corresponding to an overall reduction in runoff of up to 80
385 percent in the central Yucatan Peninsula and Guatemalan highlands, and of 20 percent in the Veracruz, Tabasco and
386 Campeche lowlands (Imbach et al., 2012; Kemp et al., 2016). Such alteration in hydrologic regime will dovetail with
387 sea level rise, leading to flooding of the most coastal lowlands including Terminos Lagoon, whose surrounding wetlands
388 have been identified as some of the most critical areas in the region in terms of submersion risk and flooding (Ramos
389 Reyes et al., 2016).

390 Considering pollutants, the highest dissolved Total Polycyclic Aliphatic Hydrocarbons (PAH) concentrations were
391 reported from the Carmen Inlet, whereas water masses close to the Palizada River estuary supported an abundant
392 bacterial community of PAH degraders (Conan et al., 2017). PAH concentrations in oyster tissues were reported to range

from 2.5 to 42.5 $\mu\text{g g}^{-1}$ (Norena-Barroso et al., 1999). The predominance of low and medium molecular weight alkylated compounds over their parent compounds indicated the petrogenic source of these PAHs, hence pointing to offshore oil activities as a major source of PAHs inputs. A study in the western part of Terminos Lagoon showed that PAH concentrations in fish flesh exceeded the maximum values recommended by international regulations (greater than 40.0 $\mu\text{g g}^{-1}$ for the epibenthic *Petenia splendida*) (Orozco-Barajas et al., 2014).

Chlorpyrifos was detected in the water at concentrations up to 72 pg l^{-1} , and amongst organochlorine compounds, PolyChloroBiphenyl (PCB) averaged 1177 pg l^{-1} and DDT 279 pg l^{-1} , respectively (Carvalho et al., 2009a). Residues of chlorinated compounds were present in both the sediments and the biota, with DDT averaging 190 pg g^{-1} and 5876 pg g^{-1} in sediments and oysters, respectively. Concentrations of residues did not reach alarming levels and were in fact lower than those reported for other coastal lagoons of the region (Carvalho et al., 2009b). The Palizada River is by far the major contributor (85 % to 99 % depending on the considered metal) of riverborne metal inputs to the lagoon (Páez-Osuna et al., 1987). Reported concentrations of total metals in lagoon water were higher than in pristine environments (Vazquez et al., 1999) but not very different than in other coastal waters. The authors related the highest metal concentrations in the lagoon to anthropogenic inputs from rivers as well as to more diffuse atmospheric input from the nearby petroleum industry, but no direct evidence was provided.

Comparisons between metal concentrations in the oyster *Crassostrea virginica* with previous data (Vazquez et al., 1993) showed that whereas zinc concentrations remained virtually unchanged since the mid-1970s, the levels of cadmium decreased and concentrations of copper and lead increased significantly. In a recent paper dealing with the study of the effect of various contaminants on the oyster *C. virginica* (Gold-Bouchot et al., 1995) the authors concluded that the pollution level in Terminos Lagoon could be considered as moderate.

Long-term effects of pesticides and heavy metals were studied in aquatic mammals inhabiting Terminos Lagoon. Heavy metals and pesticides in bottlenose dolphins (*Tursiops truncatus*) were present in skin and blubber biopsy samples, albeit in lower concentrations than those recorded in other studies (Delgado-Estrella et al., 2014).

9. Conclusions and recommendations

The great variability and heterogeneity in the numerous variables that control and characterize transitional water systems greatly hinders the potential for inter-comparison between very diverse sites, because tropical coastal lagoon systems are driven, for example, by very specific factors when compared to temperate ones (Ortiz-Lozano et al., 2005; Camacho-Ibar & Rivera-Monroy, 2014). While most of the coastal lagoons in the world are more or less exposed to the same set of detrimental factors arising from human development and sea level rise, global climate change impacts can on the other hand be strongly geographically dependent, even at the regional scale. This variability is particularly strong in the Gulf of Mexico and Central America region, and joint simulations foresee an increase in the mean annual discharge of the Mississippi-Atchafalaya River by 11 to 63 percent, compared to a severe decrease by up to 80 percent for the Usumacinta-Grijalva River (Kemp et al., 2016). Such a contrasting forecast regarding the two major watersheds of the Gulf of Mexico is of major consequence to their respective downstream coastal systems and prefigures a drastic environmental shift in Terminos Lagoon.

Considering the sensitivity of the biota to the balance between riverine and marine influences, salinity is obviously an essential indicator of the main alteration process that will impact the Terminos Lagoon system on a long term and global scale. In the absence of a structured environmental monitoring plan focusing on the hydrology of Terminos Lagoon in particular, urgent action should be taken to gather information on the ongoing trends in environmental change. Indeed, the previously exposed arguments demonstrate that salinity is the most obvious basic indicator of environmental change to be continuously measured in various representative parts of the lagoon.

Larger scale studies are required to more precisely capture the dimensions and nature of the changes produced and their effects on the structure and function of the landscape. Additionally, deeper examination of the history of land use should be conducted to better interpret elements concerning the causes of changes and modifications occurring in the area. Regional trends over the past 30 years have replaced forests with pastures, and there is a call today for more efficient and proactive conservation policies through paid environmental services.

Regarding pollutants, environmental threats seem to be primarily localized around urban areas and river mouths, or restricted to specific ecosystem components, especially in the highest trophic levels. Furthermore, studies on emerging pollutants are entirely absent in Terminos Lagoon and are urgently needed.

Finally, even if several compartments of the benthic ecosystem have been studied, some topics remain to be assessed, such as sediment-water exchanges of nutrients and benthic carbon mineralization in the lagoon, as well as the processes related to microphytobenthic productivity. Such information may be of prime importance in understanding the functioning of Terminos Lagoon and for calculating accurate budgets in order to preserve this protected but threatened ecosystem.

Acknowledgements

This study was financially supported by the Institut de Recherche pour le Développement (IRD), the Centre National de la Recherche Scientifique (CNRS), the Université de Lille, the Universidad Autónoma Metropolitana-Iztapalapa (UAM-I) and the French National Program Ecosphère Continentale et Côtière - Dynamique et Réactivité des Interfaces Littorales (EC2CO-DRIL). Acknowledgements are also due to Instituto de Ciencias del Mar y Limnología, Universidad Nacional Autónoma de México (ICMyL-UNAM) for providing access to their field station in Ciudad del Carmen. French Bi National collaboration was federated by ECOS-Nord (ECOS/ANUIES/SEP/CONACyT contract M12-U01) and DANONE-BONAFONT S.A. de C.V.

References

Abascal-Monroy, I.M., Zetina-Rejon, M.J., Escobar-Toledo, F., Lopez-Ibarra, G.A., Sosa-Lopez, A., Tripp-Valdez, A., 2016. Functional and Structural Food Web Comparison of Terminos Lagoon, Mexico in Three Periods (1980, 1998, and 2011). *Estuaries and Coasts*, 39, 1282-1293.

462 Ayala-Castañares, A., 1963. Sistemática y distribución de los foraminíferos de la Laguna de Términos, Campeche,
463 México. Bol. Inst. Geol. Univ. Nal. Autón. México. 67, 1-130.

464 Bach, L., Calderon, R., Cepeda, M. F., Oczkowski, A., Olsen, S.B., Robadue, D., 2005. Resumen del Perfil de Primer
465 Nivel del Sitio Laguna de Términos y su Cuenca, México; Narragansett, RI: Coastal Resources Center, University
466 of Rhode Island.

467 Biasutti, M., Sobel, A.H., Camargo, S.J., Creyts, T.T., 2012. Projected changes in the physical climate of the Gulf Coast
468 and Caribbean. *Climate Change*, 112, 819–845.

469 Borja, A., 2014. Grand challenges in marine ecosystems ecology. *Frontiers in Marine Sciences* 1: 1-6.

470 Calva B.L.G., Torres, R.A., 2011. Carbono orgánico y características texturales de sedimentos en áreas del pasto marino
471 *Thalassia testudinum* en ecosistemas costeros del Sureste del Golfo de México. *Universidad y Ciencia* 27(2), 133-
472 144.

473 Carvalho, F. P., Villeneuve, J. P., Cattini, C., et al., 2009a. Pesticide and PCB residues in the aquatic ecosystems of
474 Laguna de Términos, a protected area of the coast of Campeche, Mexico. *Chemosphere* 74, 988-995.

475 Carvalho, F. P., Villeneuve, J. P., Cattini, C., et al., 2009b. Ecological risk assessment of PCBs and other organic
476 contaminant residues in Laguna de Terminos, Mexico. *Ecotoxicology* 18, 403-416.

477 Chávez, M. E., 1979. Desarrollo larvario de *Crassostrea virginica* (Gmelin, 1792) y *Rangia cuneata* (Gray, 1831)
478 (Mollusca: Bivalvia), procedentes del área Atasta-Pom de la Laguna de Términos, Campeche, México. Tesis M.
479 en C. Ciencias del Mar. Centro Cienc. del Mar y Limnol. Univ. Nal. Autón. México D.F., 72 p.

480 Conan, P., Agab, M., Calva Benítez L.G., Chifflet, S., Douillet, P., Dussud, C., Fichez, R., Grenz, C., Gutierrez
481 Mendieta, F., Origel-Moreno, M., Pujo-Pay, M., Rodríguez-Blanco, A., Sauret, C., Severin, T., Tedetti, M., Torres
482 Alvarado, R., Ghiglione, J.-F., 2017 Combining biogeochemical characterisation and microbial biomass and
483 activities to assess pelagic cycling in a large and shallow tropical lagoon (Terminos Lagoon, Mexico).
484 *Biogeosciences* 14, 959-975.

485 CONAPESCA, 2008. Anuario estadístico de Pesca. CONAPESCA. México., 193 p.

486 Contreras Ruiz Esparza, A., Douillet, P., Zavala-Hidalgo, J. 2014. Tidal dynamics of the Terminos Lagoon, Mexico:
487 observations and 3D numerical modelling. *Ocean Dynamics* 64, 1349-1371.

488 Corona, A, Luis, A. Soto, L.A., Sanchez, A. J., 2000. Epibenthic amphipod abundance and predation efficiency of the
489 pink shrimp *Farfantepenaeus duorarum* (Burkenroad, 1939) in habitats with different physical complexity in a
490 tropical estuarine system. *Journal of Experimental Marine Biology and Ecology* 253, 33–48.

491 Cullen-Unsworth, L., Unsworth, R., 2013. Seagrass meadows, Ecosystem Services and Sustainability. *Environment*
492 *Magazine* 55, 14-26.

493 David, L. T., Kjerfve, B., 1998. Tides and Currents in a Two-Inlet Coastal Lagoon: Laguna de Términos, México.
494 *Continental Shelf Research* 18, 1057-1079.

495 David, L.T., 1999. Laguna de Términos, Campeche. Mexican and Central American coastal lagoon systems: Carbon,
496 Nitrogen and Phosphorus fluxes. *LOICZ Reports and Studies* 13, 9-15.

- Day Jr, J.W., Coronado-Molina, C., Vera-Herrera, F. R., Twilley, R., Rivera-Monroy, V. H., Alvarez-Guillen, H., et al., 1996. A 7 year record of above-ground net primary production in a southeastern Mexican mangrove forest. *Aquatic Botany* 55, 39-60.
- Day Jr, J.W., Day, R.H., Barreiro, M.T., Ley-Lou, F., Madden, C.J., 1982. Primary production in the Laguna de Terminos, a tropical estuary in the Southern Gulf of Mexico. *Coastal Lagoons*. In: Lasserre, P., Postma, H. (Eds), *Oceanologica Acta* 5, 269-276.
- Delgado-Estrella, A., Barreto-Castro, M.R., Acevedo-Olvera, G., Vázquez-Maldonado, L.E., 2014. Effects of pollutant discharges on the aquatic mammal populations of Terminos Lagoon, Campeche, Mexico. *WIT Transactions on Ecology and The Environment*, Vol 200, Water and Society III 229, doi:10.2495/WS150191.
- EPOMEX, 2002. *Ecología del Paisaje y Diagnóstico Ambiental del ANP Laguna de Términos*. EPOMEX–UNAM. Campeche, México, 199 p.
- EU, 2000. Directive 2000/60/EC of the European Parliament and of the Council establishing a framework for Community action in the field of water policy. *Official Journal of the European Communities* L 327, 1e72.
- Fichez, R., Archundia, D., Grenz, C., Douillet, P., Gutiérrez Mendieta, F., Origel Moreno, M., Denis, L., Contreras Ruiz Esparza, A., Zavala-Hidalgo, J., 2017. Global climate change and local watershed management as potential drivers of salinity variation in a tropical coastal lagoon (Laguna de Términos, México). *Aquatic Sciences* 79, 219-230.
- Fuentes-Yaco, C., de Leon, D.A.S., Monreal-Gomez, M.A., Vera-Herrera, F., 2001. Environmental forcing in a tropical estuarine ecosystem: the Palizada River in the southern Gulf of Mexico. *Marine and Freshwater Research* 52, 735-744.
- García-Cubas, A., 1988. Características ecológicas de los moluscos de la Laguna de Términos. In: Yañez-Arancibia A., Day J.W. (Eds), *Ecology of Coastal ecosystem in the southern Gulf of Mexico: The Terminos lagoon Region*, Inst. Cien. del Mar y Limnol. UNAM, Coast. Ecol. Inst. LSU Editorial Universitaria, Mexico DF. Chap. 16, 277-304.
- García-Ríos, V., Alpuche-Gual, L., Herrera-Silveira, J., Montero-Muñoz, J., Morales-Ojeda, S., Pech, D., Cepeda-González, M. F., Zapata-Pérez, O., Gold-Bouchot, G. 2013. Towards a coastal condition assessment and monitoring of the Gulf of Mexico Large Marine Ecosystem (GoM LME): Terminos Lagoon pilot site, *Environmental Development* 7, 72–79.
- Gold-Bouchot, G., Barroso-Noreña, E., Zapata-Perez, O., 1995. Hydrocarbon Concentrations in the American Oyster (*Crassostrea virginica*) in Laguna de Terminos, Campeche, Mexico. *Bulletin of Environmental Contamination and Toxicology* 53, 222-227.
- Gómez-Reyes, E., Vázquez-Botello, A., Carriquiry, J., Buddemeier, R., 1997. Laguna de Terminos, Campeche. In: Smith, S.V., Ibarra-Obando, S., Boudreau, P.R., Camacho-Ibar, V.F. (Eds.), *Comparison of Carbon, Nitrogen and Phosphorus Fluxes in Mexican Coastal Lagoons*, LOICZ, Texel, The Netherlands, LOICZ Reports & Studies No. 10, 84 p.
- Halpern, B.S., Walbridge, S., Selkoe, K.A., Kappel, C.V., Micheli, F., D'Agrosa, C., Bruno, J.F., Casey, K.S., Ebert, C., Fox, H.E., Fujita, R., Heinemann, D., Lenihan, H.S., Madin, E.M., Perry, M.T., Selig, E.R., Spalding, M., Steneck, R., Watson, R., 2008. A Global Map of Human Impact on Marine Ecosystems. *Science* 319, 948-952.

534 Hernandez-Alcantara, P., Solis-Weiss, V., 1991. Ecological aspects of the Polychaete populations associated with the
535 red mangrove *Rhizophora mangle* at Laguna de Terminos, southern part of the Gulf of Mexico. *Ophelia* Suppl. 5,
536 451-462.

537 Herrera, J., Silva, A., Salles, P., Villalobos, G.J., Medina, I., Espinal, J., 2002. Análisis de la calidad ambiental usando
538 indicadores hidrobiológicos y modelo hidrodinámico actualizado de Laguna de Términos. CINVESTAV-IPN
539 (Campus Mérida), EPOMEX, UNAM, 187 p.

540 Hidalgo, H.G., Amador, J.A., Alfaro, E.J., Quesada, B., 2013. Hydrological climate change projections for Central
541 America. *Journal of Hydrology*, 495, 94–112.

542 Hopkinson, C.S., Kipp, S.J., Stevenson, J.C., 1988. Nitrogen pools and turnover times in a tropical seagrass system,
543 Terminos Lagoon. In: Yáñez-Arancibia A., Day J.W. (Eds), *Ecology of Coastal ecosystem in the southern Gulf of Mexico: The Terminos lagoon Region*, Inst. Cien. del Mar y Limnol. UNAM, Coast. Ecol. Inst. LSU Editorial
544 Universitaria, Mexico DF. Chap. 9, 171-180.

546 Imbach, P., Molina, L., Locatelli, B., Rounsard, O., Mahe, G., Neilson, R., Corrales L., Scholze, M., Ciasis, P., 2012.
547 Modeling potential equilibrium states of vegetation and terrestrial water cycle of Mesoamerica under climate
548 change scenarios. *Journal of Hydrometeorology*. 13, 665–680.

549 Jensen, J., Kjerfve, B., Ramsey, E.W., Magill, K.E., Medeiros, C., Sneed, J.E., 1989. Remote sensing and numerical
550 modeling of suspended sediment in Laguna de Terminos, Campeche, Mexico. *Remote Sensing Environment* 28,
551 33-44.

552 Kennish, M.J., 2002. Environmental threats and environmental future of estuaries. *Environmental Conservation* 29, 78–
553 107.

554 Kemp, W.M., Boynton, W.R., Stevenson, J.C., Hopkinson, C.S., Day, J.W., Yanez-Arancibia, A., 1988. Ammonium
555 regeneration in the sediments of a tropical seagrass beds (*Thalassia testudinum*) community, Terminos Lagoon.
556 In: Yáñez-Arancibia A., Day J.W. (Eds), *Ecology of Coastal ecosystem in the southern Gulf of Mexico: The Terminos lagoon Region*, Inst. Cien. del Mar y Limnol. UNAM, Coast. Ecol. Inst. LSU Editorial Universitaria,
557 Mexico DF. Chap. 10, 181-192.

559 Kemp, G. P., Day, J.W., Yáñez-Arancibia, A., Peyronnin, N.S., 2016. Can Continental Shelf River Plumes in the
560 Northern and Southern Gulf of Mexico Promote Ecological Resilience in a Time of Climate Change? *Water* 8,
561 DOI: 10.3390/w8030083

562 Kjerfve, B., Magill, K.E., Sneed, J.E., 1988. Modeling of circulation and dispersion in Términos Lagoon. In: Yáñez-
563 Arancibia A., Day J.W. (Eds), *Ecology of Coastal ecosystem in the southern Gulf of Mexico: The Terminos lagoon Region*, Inst. Cien. Del Mar y Limnol. UNAM, Coast. Ecol. Inst. LSU Editorial Universitaria, Mexico DF.
564 Chap. 8, 111–129.

566 Lugo, A. Snedaker, S., 1974. The ecology of mangroves. *Annual Review of Ecology and Systematics* 5: 39–64.

567 Márquez-García, A.Z., 2010. Características sedimentológicas del Sur del Golfo de México, Tesis de Doctorado,
568 Posgrado de Ciencias del Mar, UNAM, 280 p.

569 Márquez-García, A.Z., Bolongaro-Crevenna, A., Rodríguez-Torres, V., 2013. Tasas de erosion y vulnerabilidad física
570 en zonas costeras. Reunión Anual de la Unión Geofísica Mexicana.

- Marrón-Aguilar, M.A., 1975. Estudio cuantitativo y sistemático de los poliquetos (Annelida, Polychaeta) bentónicos de la Laguna de Términos, Campeche, México. Tesis doctoral Fac. de Ciencias. Univ. Nal. Autón. México, 143 p.
- Monsen, N.E., Cloern, J.E., Lucas, L.V., Monismith, S.G., 2002. A comment on the use of flushing time, residence time, and age as transport time scales. *Limnology & Oceanography* 47, 1545-1553.
- Moore, K.A., Wetzel, R.L., 1988. The distribution and productivity of seagrasses in the Terminos lagoon. In: Yáñez-Arancibia A., Day J.W. (Eds), *Ecology of Coastal ecosystem in the southern Gulf of Mexico: The Terminos lagoon Region*, Inst. Cien. Del Mar y Limnol. UNAM, Coast. Ecol. Inst. LSU Editorial Universitaria, Mexico DF. Chap 12, 207-220.
- Negreiros-Fransozo, M.L., Barba, E., Sánchez, A.J., Fransozo, A., Ráz-Guzmán, A., 1996. The species of Hippolyte leach (Crustacea, Caridea, Hippolytidae) from Terminos Lagoon, southwestern Gulf of Mexico. *Rev. Bras. Zool.* 13, 539-551.
- Newton, A., Weichselgartner J., 2014. Hotspots of coastal vulnerability: A DPSIR analysis to find societal pathways and responses. *Coastal and Shelf Science* 140, 123-133.
- Newton, A., Icely, J., Cristina, S., Brito, A., Cardoso, A.C., Colijn, F., Riva, S.D., Gertz, F., Hansen, J.W., Holmer, M., Ivanova, K., Leppakoski, E., Canu, D.M., Mocenni, C., Mudge, S., Murray, N., Pejrup, M., Razinkovas, A., Reizopoulou, S., Perez-Ruzafa, A., Schernewski, G., Schubert, H., Carr, L., Solidoro, C., Viaroli, P., Zaldivar, J.M., 2014. An overview of ecological status, vulnerability and future perspectives of European large shallow, semi-enclosed coastal systems, lagoons and transitional waters. *Estuarine, Coastal and Shelf Science* 140, 95-122.
- Norena-Barroso, E., Gold-Bouchot, G., Zapata-Perez, O., Sericano, J.L., 1999. Polynuclear aromatic hydrocarbons in American oysters *Crassostrea virginica* from the Terminos Lagoon, Campeche, Mexico. *Marine Pollution Bulletin* 38, 637-645.
- Orozco-Barajas, L., Ayala-Pérez, L., Morales-McDevitt, M.E. 2014. Hidrocarburos Aromáticos Policíclicos (hap) y peces del sistema Pom- Atasta, Campeche, México. p. 363-382. In: Botello, A.V., Rendón von Osten, J., Benítez, J.A., Gold-Bouchot, G. (Eds.). *Golfo de México. Contaminación e impacto ambiental: diagnóstico y tendencias*. UAC, UNAM- ICMYL, CINVESTAV-Unidad Mérida, 1176 p.
- Ortega, M.M., 1995. Observaciones del fitobentos de la Laguna de Términos, Campeche, México. *Anales Inst. Biol. UNAM. Ser Bot.* 66, 1-36.
- Orth, R.J., Williams, M.R., Marion, S.R., Wilcox, D.J., Carruthers, T.J.B., Moore, K.A., Kemp W.M., Dennison, W.C., Rybicki, N., Bergstrom, P., Batiuk, R.A., 2010. Longterm trends in submersed aquatic vegetation (SAV) in Chesapeake Bay, USA, related to water quality. *Estuaries and Coasts* 33, 1144-1163.
- Páez-Osuna, F., Valdez-Lozano, D.S., Alexander, H.M., Fernandez-Perez, H., 1987. Trace metals in the fluvial system of Terminos lagoon, Mexico. *Marine Pollution Bulletin* 18, 294-297.
- Parry, M.L., Canziani, O.F., Palutikof, P.J., van der Linden, J.P., Hanson, C.E. Eds., 2007, *Climate Change 2007: Impacts, Adaptation and Vulnerability. Contribution of Working Group II to the Fourth Assessment Report of the Intergovernmental Panel on Climate Change*, Cambridge University Press, Cambridge, UK, 982pp.
- Phleger, F.B., Ayala-Castanares, A., 1971. Processes and history of Terminos lagoon. *Bull. Am. Assoc. Petrol. Geol.* 55(2), 2130-2140.

608 Ramos-Miranda, J., Mouillot, D., Flores-Hernandez, D., Sosa-López, A., Do-Chi, T., Ayala-Perez, L., 2005. Changes
609 in four complementary facets of fish diversity in a tropical coastal lagoon after 18 years: a functional
610 interpretation. *Marine Ecology Progress Series*, 304, 1–13.

611 Ramos-Miranda, J., Quiniou, L., Flores-Hernandez, D., Do-Chi, T., Ayala-Perez, L., Sosa-Lopez, A., 2005. Spatial and
612 temporal changes in the nekton of the Terminos Lagoon, Campeche, Mexico. *Journal of Fish Biology* 66, 513-
613 530.

614 Ramos-Reyes, R., Zavala-Cruz, J., Gama-Campillo, L.M., Pech-Pool, D., Ortiz-Perez, L., 2016. Indicadores
615 geomorfológicos para evaluar la vulnerabilidad por inundación ante el ascenso del nivel del mar debido al cambio
616 climático en la costa de Tabasco y Campeche, México. *Boletín de la Sociedad Geológica Mexicana*, 68, 581-598.

617 Raz-Guzman, A., Barba Macias, E., 2000. Seagrass biomass, distribution and associated macrofauna in southwestern of
618 Mexico coastal lagoons. *Biol. Mar. Mediterranean* 7(2), 271 p.

619 Reveles, G.M.B., 1984. Contribución al estudio de los anélidos poliquetos asociados a praderas de *Thalassia testudinum*
620 en la porción este-sur de la Laguna de Términos, Tesis profesional. Fac. Ciencias. Camp. Univ. Nal. Autón.
621 México, 170 p.

622 Reyes, E.G., Vázquez-Botello, A., Carriquiry, J., Buddemeier, R., 1997. Laguna de Términos, Campeche. In: Smith
623 S.V., Ibarra-Obando S., Boudreau P.R., Camacho-Ibar V.F. (Eds), Comparison of carbon, nitrogen and
624 phosphorus fluxes in Mexican coastal lagoons, Netherlands Institute for Sea Research, Texel, NL, LOICZ reports
625 & studies No 10, 56-59.

626 Rivera-Monroy, V.H., Day, J.W., Twilley, R.R., Vera-Herrera, F., Coronado-Molina, C., 1995. Flux of nitrogen and
627 sediment in a fringe mangrove forest in Terminos lagoon, Mexico. *Estuarine, Coastal and Shelf Science* 40, 139-
628 160.

629 Rivera-Monroy, V.H., Madden, C.J., Day, J.W., Twilley, R.R., Vera-Herrera, F., Alvarez-Guillén, H., 1998. Seasonal
630 coupling of a tropical mangrove forest and an estuarine water column: enhancement of aquatic primary
631 productivity. *Hydrobiologia* 379, 41-53.

632 Robadue, D.Jr., Oczkowski, A., Calderon, R., Bach, L., Cepeda, M.F., 2004. Characterization of the region of the
633 Terminos Lagoon: Campeche, Mexico. PlusDraft 1 Site Profile. Draft for discussion. The Nature Conservancy,
634 Corpus Christi.

635 Rogers-Nieto, P., Garcia-Cubas, A., 1981. Evolución gonádica a nivel histológico del ostión *Crassostrea virginica*
636 (Gmelin,1791) del sistema fluvio-lagunar Atasta-Pom, Laguna de Términos, Campeche, México. *An. Centro*
637 *Cienc. del Mar y Limnol. Univ. Nal. Autón. México*, 8, 21-40.

638 Rojas-Galaviz, J.L., Yáñez-Arancibia, A., Vera-Herrera, F., Day, J.W., 1992. Estuarine primary producers: the Terminos
639 Lagoon case study. In: U. Seeliger, U., (Ed), *Coastal Plant Communities in Latin America*, New York, Academic
640 Press Inc. Chap. 10, 141-154.

641 Ruiz, M.E., 1975. Estudio ecológico preliminar de las almejas comerciales del sistema lagunar de Términos, Campeche,
642 *Rangia cuneata* (Gray, 1831). Tesis profesional. Fac. Ciencias. Univ. Nal. Autón. México, 80 p.

643 Sirot, C., Gronkjaer, P., Pedersen, J.B., Panfili, J., Zetina-Rejon, M., Tripp-Valdez, A., Ramos-Miranda, J., Flores-
644 Hernandez, D., Sosa-Lopez, A., Darnaude, A.M., 2017. Using otolith organic matter to detect diet shifts in
645 *Bardiella chrysoura*, during a period of environmental changes. *Marine Ecology Progress Series*, 575, 137-152.

646 Sirot, C., Villéger, S., Mouillot, D., Darnaude, A.M., Ramos-Miranda, J., Flores-Hernandez, D., Panfili, J., 2015.
647 Combinations of biological attributes predict temporal dynamics of fish species in response to environmental
648 changes. *Ecological Indicators*, 48, 147–156.

649 Sosa-Lopez, A., Mouillot, D., Ramos-Miranda, J., Flores-Hernandez D., Do Chi, T., 2007. Fish species richness
650 decreases with salinity in tropical coastal lagoons. *Journal of Biogeography* 34, 52-61.

651 Soto-Galera, E., Pierra, J., Lopez, P., 2010. Spatial and temporal land cover changes in Terminos Lagoon Reserve,
652 Mexico. *Revista de Biología Tropical*, 58, 565-575.

653 Stevenson, J.C., Madden C.J., Hopkinson, C.H., 1988. Sources of new nitrogen in a tropical seagrass system, Terminos
654 Lagoon, with special reference to N-fixation. In: Yáñez-Arancibia A., Day J.W. (Eds), *Ecology of Coastal*
655 *ecosystem in the southern Gulf of Mexico: The Terminos lagoon Region*, Inst. Cien. Del Mar y Limnol. UNAM,
656 Coast. Ecol. Inst. LSU Editorial Universitaria, Mexico DF, Chap. 8: 159-170.

657 Tett, P., Gowen, R.J., Painting, S.J., Elliott, M., Forster, R., Mills, D.K., Bresnan, E., Capuzzo, E., Fernandes, T.F.,
658 Foden, J., Geider, R.J., Gilpin, L.C., Huxham, M., McQuatters-Gollop, A.L., Malcolm, S.J., Saux-Picart, S., Platt,
659 T., Racault, M.F., Sathyendranath, S., Van der Molen, J., Wilkinson, M., 2013. Framework for understanding
660 marine ecosystem health. *Mar. Ecol. Prog. Ser.* 494, 1–27.

661 Umgieser, G., Ferrarin, C., Cucco, A., De Pascalis, F., Bellafore, D., Ghezzi, M., Bajo, M., 2014. Comparative
662 hydrodynamics of 10 Mediterranean lagoons by means of numerical modeling, *J. Geophys. Res. Oceans*, 119,
663 2212–2226, doi:10.1002/ 2013JC009512.

664 Vazquez, G.F., Sanchez, G.M., Virender, K.S., 1993. Trace metals in the oyster *Crassostrea virginica* of the Terminos
665 lagoon, Campeche, Mexico. *Marine Pollution Bulletin* 26, 398-399.

666 Vazquez, G.F., Sharma, V.K., Magallanes, V.R., Marmolejo, A.J., 1999. Heavy metals in a coastal lagoon of the Gulf
667 of Mexico. *Marine Pollution Bulletin* 38, 479-485.

668 Velázquez, A., Mass, J.F., Díaz-Gallegos, J.R., Mayorga-Saucedo, R., Alcántara, P.C., Castro, R., Fernández, T., Bocco,
669 G., Ezcurra, E., Palacio, J.L., 2001. *Patrones y Tasas de Cambio de Uso del Suelo en México*. Instituto Nacional
670 de Ecología. (www2.ine.gob.mx/publicaciones)

671 Villéger, S., Miranda, J.R., Hernández, D.F., Mouillot, D., 2010. Contrasting changes in taxonomic vs. functional
672 diversity of tropical fish communities after habitat degradation. *Ecological Applications*, 20, 1512–1522.

673 Yáñez-Arancibia, A., Day Jr., J.W., 1982. Ecological characterization of Terminos Lagoon, a tropical lagoon- estuarine
674 system in the southern Gulf of Mexico. *Oceanol. Acta*, Proceeding International Symposium on coastal lagoons,
675 SCOR/IABO/UNESCO, Bordeaux, France, 8-14 September, 1981, 431-440.

676 Yáñez-Arancibia, A., Day Jr., J.W., 1988. *Ecology of Coastal Ecosystems in the Southern Gulf of Mexico: The Terminos*
677 *Lagoon Region*, Instituto de Ciencias del Mar y Limnología UNAM, C Press Mexico, 518 p.

678 Yáñez-Arancibia, A., Day, J., 2005. Managing Freshwater inflows to Estuaries. *Ecosystem Functioning: The Basis for*
679 *a Sustainable Management of Terminos Lagoon, Campeche, Mexico*. Institute of Ecology A.C., 77 p.

680 Yáñez-Arancibia, A., Lara-Domínguez, A.L., Chavance, P., Hernández, D.F., 1983. Environmental Behavior of Terminos
681 Lagoon Ecological System, Campeche, Mexico. An. Inst. Cien.del Mar y Limnología,, Universidad Autónoma de
682 México 10, 137-176.

683 Yáñez-Arancibia, A., Lara-Dominguez, A., Day, J., 1993. Interactions between mangrove and seagrass habitats
684 mediated by estuarine nekton assemblages: coupling of primary and secondary production. Hydrobiologia 264,
685 1-2

686 Yáñez-Correa, A., 1963. Batimetria, salinidad, temperatura y distribucion de los sedimentos recientes de la Laguna de
687 Términos, Campeche, Mexico. Boletin de la Sociedad Mexicana de Geología, Univ. Nac. Autón. Méx. (UNAM)
688 67, 1-47.

689 Zaldivar-Jimenez, A., Ladron-de-Guevara-Porras, P., Perez-Ceballos, R., Diaz-Mondragon, S., Rosado-Solorzano, R.,
690 2017. US-Mexico joint Gulf of Mexico large marine ecosystem based assessment and management: Experience
691 in community involvement and mangrove wetland restoration in Terminos lagoon, Mexico. Environmental
692 Development, 22, 206-2013.

693