



**HAL**  
open science

## Early-onset epileptic encephalopathy as the initial clinical presentation of WDR45 deletion in a male patient

Affef Abidi, Cecile Mignon-Ravix, Pierre Cacciagli, Nadine Girard, Mathieu Milh, Laurent Villard

► **To cite this version:**

Affef Abidi, Cecile Mignon-Ravix, Pierre Cacciagli, Nadine Girard, Mathieu Milh, et al.. Early-onset epileptic encephalopathy as the initial clinical presentation of WDR45 deletion in a male patient. *European Journal of Human Genetics*, 2015, 24 (4), pp.615 - 618. 10.1038/ejhg.2015.159 . hal-01668016

**HAL Id: hal-01668016**

**<https://amu.hal.science/hal-01668016>**

Submitted on 19 Dec 2017

**HAL** is a multi-disciplinary open access archive for the deposit and dissemination of scientific research documents, whether they are published or not. The documents may come from teaching and research institutions in France or abroad, or from public or private research centers.

L'archive ouverte pluridisciplinaire **HAL**, est destinée au dépôt et à la diffusion de documents scientifiques de niveau recherche, publiés ou non, émanant des établissements d'enseignement et de recherche français ou étrangers, des laboratoires publics ou privés.

# Early-onset epileptic encephalopathy as the initial clinical presentation of *WDR45* deletion in a male patient

Affef Abidi<sup>1,2</sup>, Cécile Mignon-Ravix<sup>1,2</sup>, Pierre Cacciagli<sup>1,2,3</sup>, Nadine Girard<sup>4</sup>, Mathieu Milh<sup>1,2,5</sup> and Laurent Villard<sup>\*,1,2</sup>

Variants in the WD repeat 45 (*WDR45*) gene in human Xp11.23 have recently been identified in patients suffering from neurodegeneration with brain iron accumulation, a genetically and phenotypically heterogeneous condition. *WDR45* variants cause a childhood-onset encephalopathy accompanied by neurodegeneration in adulthood and iron accumulation in the basal ganglia. They have been almost exclusively found in females, and male lethality was suggested. Here we describe a male patient suffering from a severe and early neurological phenotype, initially presenting early-onset epileptic spasms in clusters associated with an abnormal interictal electroencephalography showing slow background activity, large amplitude asynchronous spikes and abnormal neurological development. This patient is a carrier of a 19.9-kb microdeletion in Xp11.23 containing three genes, including *WDR45*. These findings reveal that males with *WDR45* deletions are viable, and can present with early-onset epileptic encephalopathy without brain iron accumulation.

## INTRODUCTION

Variants in the WD repeat 45 (*WDR45*) gene have recently been identified in patients suffering from neurodegeneration with brain iron accumulation (NBIA). NBIA is a genetically and phenotypically heterogeneous condition.<sup>1</sup> Among all NBIA forms, beta propeller protein-associated neurodegeneration (BPAN) syndrome affects a subgroup of patient characterized by childhood-onset encephalopathy accompanied by neurodegeneration in adulthood and iron accumulation in the basal ganglia, notably in the globus pallidus or the substantia nigra.<sup>2</sup> *WDR45* variants associated with BPAN syndrome have been almost exclusively found in females and only three male cases have been described to date.<sup>3</sup> This low incidence of male cases has been attributed to male lethality and the existence of a few male carriers to somatic mosaicism.<sup>2</sup> Among published cases, 70% of patients suffered from epileptic seizures beginning after 3 months of age.<sup>3,4</sup>

Early-onset epileptic encephalopathies (EOEE) form a group of severe epilepsies occurring in the first 3 months of life. Clinical signs include stormy seizures associated with an altered interictal electroencephalographic (EEG) pattern and abnormal neurological development. They can be classified according to interictal/ictal EEG pattern, type of seizures and age at onset. These epileptic disorders are highly heterogeneous in terms of aetiology as they can be symptomatic (eg, cortical malformation or stroke), or have a metabolic or genetic origin. Variants in several genes were shown to cause EOEE.<sup>5</sup>

During the genetic characterization of a large cohort of patients suffering from various forms of EOEE, we identified a *de novo* deletion of the *WDR45* gene in a male patient. This patient suffers from a more severe and earlier form of BPAN syndrome. Our unexpected findings

reveal that alterations of the *WDR45* gene region in Xp11 are viable in male patients and can initially present as EOEE.

## SUBJECTS AND METHODS

### Subjects

A cohort of 352 EOEE patients was studied. The inclusion criteria were onset of epilepsy within the first 3 months of life, absence of any metabolic or obvious structural cause, abnormal interictal EEG and severe seizures that resisted to antiepileptic drugs. All patients with a normal karyotype were screened, using Sanger sequencing, for the presence of a variant in the most frequently mutated EOEE genes (*ARX*, *KCNQ2*, *STXBP1*, *SCN2A*, *SCN8A*) and, using array comparative genomic hybridization (array-CGH), to detect submicroscopic deletions/insertions. This project was approved by the local ethics committee (CPP Sud Méditerranée I, PHRC 2011/27).

### Array-CGH and quantitative PCR

Array-CGH was performed using genomic DNA isolated from blood lymphocytes by standard methods. Array-CGH was performed using NimbleGen 3 × 720 K Whole Genome arrays (Roche NimbleGen, Madison, WI), providing an average resolution of 2.5 kb. Microarrays were hybridized, scanned and analysed according to the manufacturer's instructions using a Roche Nimblegen microarray analysis platform. Regions showing abnormal dosage were compared with regions already known to represent non-pathogenic copy-number variations listed in the database of genomic variants (<http://projects.tcag.ca/cgi-bin/variation/gbrowse/hg18>). Quantitative PCR (qPCR) was performed using FastStart Universal SYBR Green Master (Rox; Roche). The Xp11.23 variant was submitted to ClinVar with accession number SCV000223701 (<http://www.ncbi.nlm.nih.gov/clinvar/>).

## RESULTS

### Clinical phenotype

The patient was referred to our centre at the age of 3 months with epileptic spasms associated with focal seizures. He was born to healthy parents after normal delivery and he adapted well initially. Neurological examination, at 3 months of age, was very abnormal – no head control, no eye contact in a hypokinetic patient with global hypotonia. He had cortical blindness and ophthalmologic examination was normal (retina and anterior chamber). EEG showed high amplitude slow waves with multifocal spikes. A cluster of asymmetric spasms was recorded. At 7 months of age, brain MRI revealed a global loss of brain volume including supra and infratentorial areas, T2 hyperintensity of the posterior fossa (bilateral dentate nuclei) and lipid accumulation on spectroscopy (white matter, not shown). This slight peak of lipids at 1.3 p.p.m. was present within the white matter only at the initial MRI assessment. No iron accumulation could be detected at this age, though no gradient echo sequence and no susceptibility weighted images were performed (Figure 1). The evolution was marked by the absence of motor or sensory acquisitions. His neurological examination showed dystonic and spastic quadriplegia, a motionless child without spontaneous movement, bedridden with very poor eye contact. Head circumference remained normal throughout follow-up. At 19 months of age, brain MRI showed increased global brain atrophy with T2 hyperintensity of the white matter. Iron accumulation was only detected at 5 years of age, using a susceptibility weighted imaging (SWI) sequence, in striata, red nuclei and substantia nigra (Figure 1). Interestingly, conventional sequences (T1, T2) failed to detect iron accumulation at this stage (Figure 1). Blood (NH<sub>4</sub>, glycemia, amino-acid chromatography, lactates, pyruvates, biotinidase

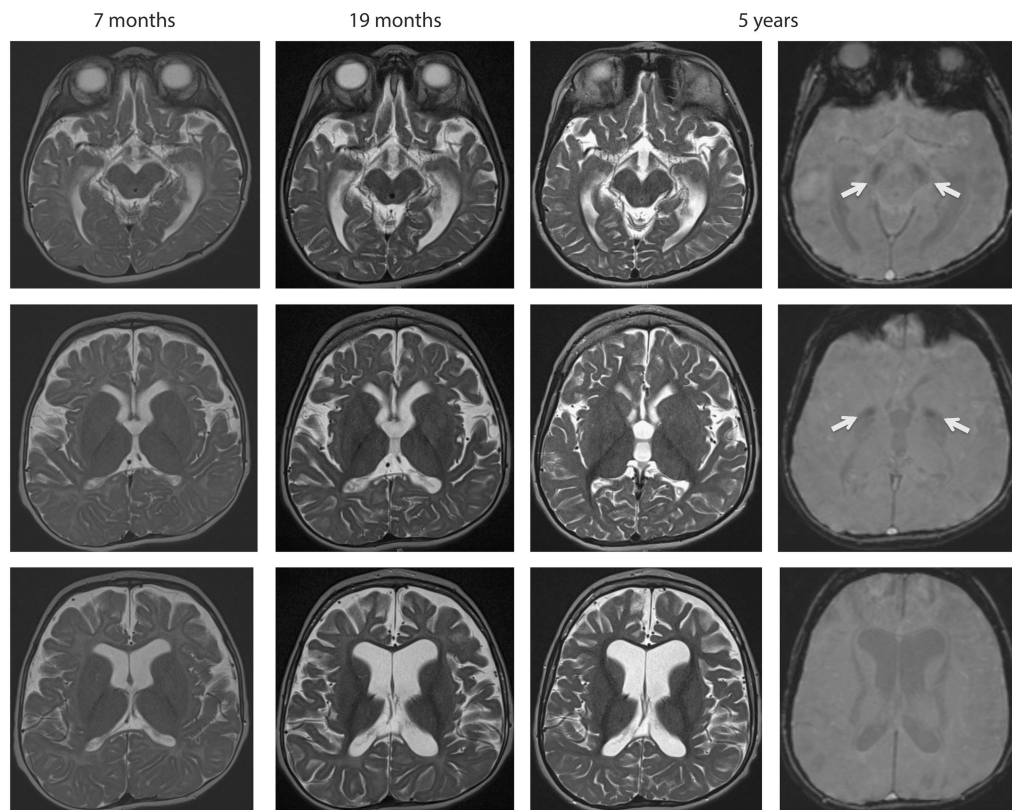
activity, pipercolic acid, transaminases, acid hydrolases), urine (chromatography of organic acids, muco/oligopolysaccarids, lactates) and cerebrospinal fluid (neurotransmitter profil, amino-acid chromatography, lactates, pyruvates) analyses were normal. Study of the mitochondrial respiratory complex on muscle was normal.

### Molecular characterization of an Xp11.23 *de novo* microdeletion

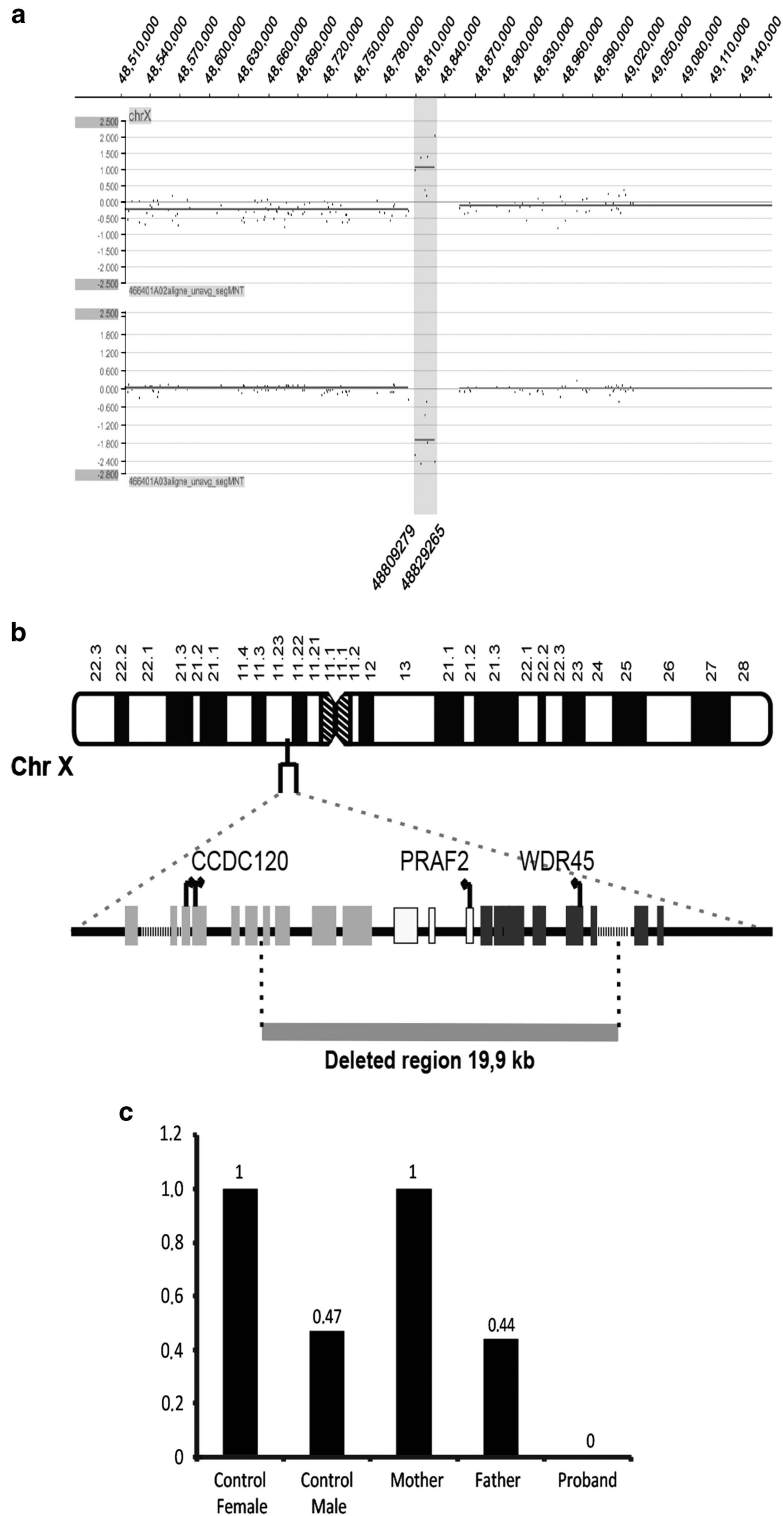
High-resolution array-CGH analysis detected a 19.9-kb deletion in Xp11.23 hg18 chrX:g.(48 802 381\_48 809 279)\_(48 829 265\_48 854-335)del (Figure 2a). Using parental DNAs, we found that this deletion occurred *de novo*. The deleted region contains three genes – *WDR45*, coiled-coil domain containing 120 (*CCDC120*) and prenylated rab acceptor 1 domain family member 2 (*PRAF2*; Figure 2b). The deletion was confirmed using qPCR and was not in a mosaic status in the patient (Figure 2c). Only one study reported a variation of Xp11.23 in the database of genomic variants (see Subjects and methods above) but no information is available for the patient gender.

## DISCUSSION

The patient described here is the first male case presenting a constitutional *WDR45* deletion in the context of EOEE. Several brain MRIs failed to detect signs of iron accumulation using conventional sequences, even several years after the symptoms onset, because no SWI or gradient echo sequences were acquired until 5 years of age. Consecutively, SWI/GRE should be included when imaging a child with unexpected dystonia. Early images rather revealed global brain atrophy, a nonspecific finding in many cases of EOEE. This patient thus presented a peculiar form of BPAN beginning with severe epilepsy and cortical blindness. In BPAN, the vast majority of



**Figure 1** Brain MRI performed at 7 months, 19 months and 5 years of age. Axial T2 sequences at different ages failed to detect iron accumulation. SWI sequence (right image) reveals an hyposignal in the basal ganglia at the level of globus pallidus and substantia nigra (white arrows), bilaterally (red nuclei are not shown).



**Figure 2** Characterization of the deletion (a). Detection of a 19.9-kb deletion on the X chromosome using array-CGH. The grey box shows the position of the deleted region extending from 48 809 279 to 48 829 265 pb (NCBI36/Hg18). The experiment was performed using dye swap and the results of Cy5 labelling (upper tracks) and Cy3 labelling (lower tracks) are shown for the same patient. (b) Schematic representation of the Xp11.23 region showing the deletion identified in the BPAN patient. The grey bar shows the deleted region. Exons are represented as black, grey or white boxes for *WDR45*, *CCDC120* and *PRAF2* genes respectively. Arrows indicate the orientation of the transcription and the position of the translation initiation codon. (c) Quantification of *WDR45* genomic DNA targets using qPCR. The control female DNA was arbitrarily set at 1 and each experiment was performed in triplicate. The mean of the three experiments is provided as a number above each condition.

published cases are females, with only three reported male patients. It has been hypothesized that the gender bias was due to *WDR45* variants lethality in males.<sup>3</sup> Along the same line, somatic mosaicism would explain the similar phenotype between the few affected males and female patients. Indeed, Haack *et al*<sup>2</sup> have confirmed the presence of somatic mosaicism in a male patient. However, the presence of a mosaic variant was not demonstrated but simply inferred for the two other males. The patient described in this report is not mosaic, at least in his lymphoblasts, and this could explain the early disease onset. We hypothesize that the initial clinical presentation of a *WDR45* deletion is an EOEE-like syndrome, followed a few years later by a more severe BPAN syndrome. Interestingly, despite full *WDR45* deletion, iron accumulation was only detected at 5 years of age. By comparison, the youngest female in whom iron accumulation was first detected was 11 years old<sup>6</sup> suggesting that non-mosaic males have a much earlier phenotype of iron deposition.

We cannot exclude the involvement of the two additional deleted genes and this peculiar clinical presentation could be due to a contiguous gene syndrome. In fact, the *PRAF2* gene encodes a member of the PRA1 domain-containing protein family. This family is already involved in the regulation of glutamate transport<sup>7,8</sup> whose defects are implicated in epilepsy.<sup>9</sup> The function of *PRAF2* is unknown, and the corresponding protein has a brain expression and is enriched in synaptic vesicles.<sup>10</sup> *CCDC120* mediates neurites' outgrowth via the regulation of cytohesin-2.<sup>11</sup> Hence, *CCDC120* deletion could also be an additional mechanism as abnormal formation of the neuronal network may contribute to intellectual deficiency or the abnormal motor and sensory acquisitions in this patient. The role of *PRAF2* and *CCDC120* during brain development and in genetic diseases remains to be investigated. Nonetheless, whatever their function is, our work reveals that males with deletions of *WDR45* are viable, and can present with EOEE.

## CONFLICT OF INTEREST

The authors declare no conflict of interest.

## ACKNOWLEDGEMENTS

We thank the patient and his family for their participation in this study. This work was supported by Programme Hospitalier de Recherche Clinique 2011, Inserm and Aix Marseille University. We thank the Centre de Ressources Biologiques of La Timone Children's Hospital (Karine Bertaux, Cécile Mouradian and Andrée Robaglia-Schlupp) for assistance with the samples used in this study.

- 1 Gregory A, Hayflick SJ: Genetics of neurodegeneration with brain iron accumulation. *Curr Neurol Neurosci Rep* 2011; **11**: 254–261.
- 2 Haack TB, Hogarth P, Kruer MC *et al*: Exome sequencing reveals de novo *WDR45* mutations causing a phenotypically distinct, X-linked dominant form of NBIA. *Am J Hum Genet* 2012; **91**: 1144–1149.
- 3 Hayflick SJ, Kruer MC, Gregory A *et al*:  $\beta$ -Propeller protein-associated neurodegeneration: a new X-linked dominant disorder with brain iron accumulation. *Brain* 2013; **136**: 1708–1717.
- 4 Saitsu H, Nishimura T, Muramatsu K *et al*: De novo mutations in the autophagy gene *WDR45* cause static encephalopathy of childhood with neurodegeneration in adulthood. *Nat Genet* 2013; **45**: 445–449.
- 5 Lin CI, Orlov I, Ruggiero AM *et al*: Modulation of the neuronal glutamate transporter EAAC1 by the interacting protein GTRAP3-18. *Nature* 2001; **410**: 84–88.
- 6 Ohba C, Nabatame S, Iijima Y *et al*: De novo *WDR45* mutation in a patient showing clinically Rett syndrome with childhood iron deposition in brain. *J Hum Genet* 2014; **59**: 292–295.
- 7 Mastrangelo M, Leuzzi V: Genes of early-onset epileptic encephalopathies: from genotype to phenotype. *Pediatr Neurol* 2012; **46**: 24–31.
- 8 Liu Y, Vidensky S, Ruggiero AM, Maier S, Sitte HH, Rothstein JD: Reticulon RTN2B regulates trafficking and function of neuronal glutamate transporter EAAC1. *J Biol Chem* 2008; **283**: 6561–6571.
- 9 Meldrum BS, Akbar MT, Chapman AG: Glutamate receptors and transporters in genetic and acquired models of epilepsy. *Epilepsy Res* 1999; **36**: 189–204.
- 10 Koomoa D-LT, Go RCV, Wester K, Bachmann AS: Expression profile of *PRAF2* in the human brain and enrichment in synaptic vesicles. *Neurosci Lett* 2008; **436**: 171–176.
- 11 Torii T, Miyamoto Y, Tago K *et al*: Arf6 guanine nucleotide exchange factor cytohesin-2 binds to *CCDC120* and is transported along neurites to mediate neurite growth. *J Biol Chem* 2014; **289**: 33887–33903.