



# High-resolution analysis of a North Sea phytoplankton community structure based on in situ flow cytometry observations and potential implication for remote sensing

M. Thyssen, S. Alvain, A. Lefèbvre, D. Dessailly, M. Rijkeboer, N. Guiselin, V. Creach, L.-F. Artigas

## ► To cite this version:

M. Thyssen, S. Alvain, A. Lefèbvre, D. Dessailly, M. Rijkeboer, et al.. High-resolution analysis of a North Sea phytoplankton community structure based on in situ flow cytometry observations and potential implication for remote sensing. *Biogeosciences*, 2015, 12 (13), pp.4051-4066. 10.5194/bg-12-4051-2015 . hal-01769437

**HAL Id: hal-01769437**

**<https://amu.hal.science/hal-01769437>**

Submitted on 18 Apr 2018

**HAL** is a multi-disciplinary open access archive for the deposit and dissemination of scientific research documents, whether they are published or not. The documents may come from teaching and research institutions in France or abroad, or from public or private research centers.

L'archive ouverte pluridisciplinaire **HAL**, est destinée au dépôt et à la diffusion de documents scientifiques de niveau recherche, publiés ou non, émanant des établissements d'enseignement et de recherche français ou étrangers, des laboratoires publics ou privés.



Distributed under a Creative Commons Attribution 4.0 International License



# High-resolution analysis of a North Sea phytoplankton community structure based on in situ flow cytometry observations and potential implication for remote sensing

M. Thyssen<sup>1,a</sup>, S. Alvain<sup>1</sup>, A. Lefèvre<sup>2</sup>, D. Dessailly<sup>1</sup>, M. Rijkeboer<sup>4</sup>, N. Guiselin<sup>1</sup>, V. Creach<sup>3</sup>, and L.-F. Artigas<sup>1</sup>

<sup>1</sup>Université Lille Nord de France, CNRS UMR8187 Laboratoire d'Océanologie et de Géosciences, Université du Littoral Côte d'Opale, MREN, 32 Avenue Foch, 62930 Wimereux, France

<sup>2</sup>Laboratoire Environnement Ressources (LER), 150 quai Gambetta, 62200, Boulogne sur Mer, France

<sup>3</sup>The Centre for Environment, Fisheries and Aquaculture Science (Cefas), Pakefield Road, NR33 0HT Lowestoft, UK

<sup>4</sup>RWS Centre for Water Management, Laboratory for Hydrobiological Analysis, Zuiderwagenplein 2, 8224 AD Lelystad, the Netherlands

<sup>a</sup>now at: Aix Marseille Université, CNRS/INSU, IRD, Mediterranean Institute of Oceanography (MIO), UM110, 13288 Marseille, France

*Correspondence to:* M. Thyssen (melilotus.thyssen@mio.osupytheas.fr)

Received: 01 October 2014 – Published in Biogeosciences Discuss.: 07 November 2014

Revised: 02 June 2015 – Accepted: 06 June 2015 – Published: 07 July 2015

**Abstract.** Phytoplankton observation in the ocean can be a challenge in oceanography. Accurate estimations of its biomass and dynamics will help to understand ocean ecosystems and refine global climate models. Relevant data sets of phytoplankton defined at a functional level and on a sub-meso- and daily scale are thus required. In order to achieve this, an automated, high-frequency, dedicated scanning flow cytometer (SFC, Cytobuoy b.v., the Netherlands) has been developed to cover the entire size range of phytoplankton cells whilst simultaneously taking pictures of the largest of them. This cytometer was directly connected to the water inlet of a PocketFerryBox during a cruise in the North Sea, 08–12 May 2011 (DYMAPHY project, INTERREG IV A “2 Seas”), in order to identify the phytoplankton community structure of near surface waters (6 m) with a high spatial resolution basis ( $2.2 \pm 1.8$  km). Ten groups of cells, distinguished on the basis of their optical pulse shapes, were described (abundance, size estimate, red fluorescence per unit volume). Abundances varied depending on the hydrological status of the traversed waters, reflecting different stages of the North Sea blooming period. Comparisons between several techniques analysing chlorophyll *a* and the scanning flow cytometer, using the integrated red fluorescence emitted by each counted cell, showed significant correlations.

For the first time, the community structure observed from the automated flow cytometry data set was compared with PHYSAT reflectance anomalies over a daily scale. The number of matchups observed between the SFC automated high-frequency in situ sampling and remote sensing was found to be more than 2 times better than when using traditional water sampling strategies. Significant differences in the phytoplankton community structure within the 2 days for which matchups were available suggest that it is possible to label PHYSAT anomalies using automated flow cytometry to resolve not only dominant groups but also community structure.

## 1 Introduction

Phytoplankton plays a major role in marine ecosystems as the most important primary producer in the ocean (Field et al., 1998). Phytoplankton is involved in the long-term trapping of atmospheric carbon and its role in carbon transfer from the upper ocean layers to deep waters highlight its influence on climate (Boyce et al., 2010; Marinov et al., 2010). Beyond its role in the carbon cycle, phytoplankton also plays a major role in modifying the biogeochemical

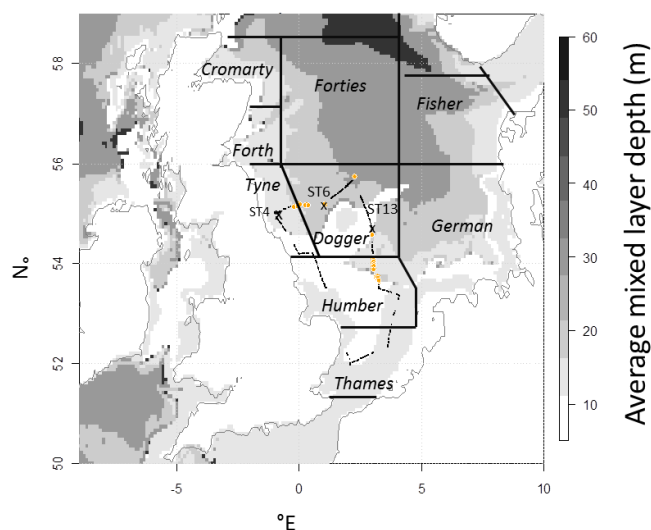
properties of water masses by converting most of the inorganic matter into available organic matter (nitrogen, phosphate, silicate, sulfur, iron) and determining the structure of the trophic status of marine environments. Given this importance, it is insufficient to use a single proxy, such as chlorophyll *a* measurements, for quantifying and qualifying phytoplankton over large scales when attempting to understand its role in biogeochemical processes (Colin et al., 2004). Such a proxy does not reflect changes in community structure (Hirata et al., 2011) and does not yield robust biomass estimations (Kruskopf and Flynn, 2006). Yet this classical proxy is frequently used to study the spatial and temporal variability of phytoplankton from both remotely sensed and in situ measurements. Le Quéré (Le Quéré et al., 2005) pointed out the importance of taking into account the functionality of phytoplankton species when considering the influence of phytoplankton community structure on biogeochemical processes. This functionality concept (i.e. phytoplankton functional types, PFTs) is described as set of species sharing similar properties or responses in relation to the main biogeochemical processes such as the N, P, Si, C and S cycles (diazotrophs for the N cycle such as cyanobacteria, dimethylsulfoniopropionate producers for the S cycle such as *Phaeocystis*, silicifiers for the Si cycle such as diatoms, calcifiers for the C cycle such as coccolithophorids, size classes mainly used for the C cycle).

Representative data sets of phytoplankton functional types, size classes and specific chlorophyll *a* concentrations are the subject of active research using high-frequency, in situ dedicated analysis from automated devices such as spectral fluorometers, particle scattering and absorption spectra recording instruments, or automated and remotely controlled scanning flow cytometers (SFCs). Among the high-frequency in situ techniques used to quantify phytoplankton abundance, community structure and dynamics, SFC is the most advanced instrument, counting and recording cell optical properties at the single-cell level. This technology has recently been adapted for the analysis of almost all the phytoplankton size classes and focuses on the resolution of phytoplankton community structure dynamics (Dubelaar et al., 1999; Olson et al., 2003; Sosik et al., 2003; Thyssen et al., 2008a, b). In parallel, algorithms applied to remote sensing data have been developed which are dedicated to characterizing phytoplankton groups, PFTs or size classes (Sathyendranath et al., 2004; Ciotti et al., 2006; Nair et al., 2008; Aiken et al., 2008; Kostadinov et al., 2009; Uitz et al., 2010; Moisan et al., 2012). One of these algorithms, PHYSAT, has provided a description of the dominant phytoplankton functional types (Le Quéré et al., 2005) for open waters on a global scale, leading to various studies concerning the PFT variability (Alvain et al., 2005, 2013; Masotti et al., 2011; Demarcq et al., 2011; Navarro et al., 2014). PHYSAT relies on the identification of water-leaving radiance spectra anomalies, empirically associated with the presence of specific phytoplank-

ton groups in the surface water. The anomalies were labelled thanks to the comparison with high-pressure liquid chromatography (HPLC) biomarker pigment matchups. To date, six dominant phytoplankton functional groups in open waters (diatoms, nanoeukaryotes, *Prochlorococcus*, *Synechococcus*, *Phaeocystis*-like cells, coccolithophorids) have been found to be significantly related to specific water-leaving radiance anomalies from SeaWiFS (Sea-viewing Wide Field-of-view Sensor) sensor measurements at a resolution of 9 km (Alvain et al., 2008). These relationships have been verified by theoretical optical models (Alvain et al., 2012). This theoretical study also showed that additional groups or assemblages could be added in the future, once accurate in situ observations are available.

Describing the community structure on a regional scale will give better quantification and understanding of the phytoplankton responses to environmental change and, consequently, support the modification of theoretical considerations regarding energy fluxes across trophic levels. It is critical for understanding community structure interactions and particularly when it is necessary to take into account the mesoscale structure in a specific area (D'Ovidio et al., 2010), which is the case in areas under the influence of regional physical forcing such as the English Channel and the North Sea. Long-term changes detected in these regions have been shown to impact local ecosystem functioning by inducing, for instance, a shift in the timing of the spring bloom (Wiltshire and Manly, 2004; Sharples et al., 2009; Vargas et al., 2009; Racault et al., 2013) or specific migrations of regional (Gomez and Souissi, 2007) or dominant phytoplankton groups (Widdicombe et al., 2010). In addition, hydrodynamic conditions have been shown to play a strong role in the phytoplankton distribution on a regional scale (Gailhard et al., 2002; Leterme et al., 2008). It is therefore crucial to develop specific approaches to characterize the phytoplankton community structure (beyond global-scale dominance) and its high-frequency variation in time and space. In order to achieve this, large data sets of in situ analyses resolving PFTs are essential for specific calibration and validation of regional remote sensing algorithms such as PHYSAT. Flow-through surface water properties analysis for remote sensing calibration optimizes the amount of matchups (Werdell et al., 2013; Chase et al., 2013). For the purpose of collecting high-resolution in situ data describing phytoplankton community structure, automated SFC technology allows samples to be collected at high frequency, resolving hourly and kilometre scales with a completely automated system. The instrument enables single-cell analysis of phytoplankton from 1 to 800 µm and several millimetres in length for chain-forming cells and automated sampling allows large space and time domains to be covered at a high resolution (Sosik et al., 2003; Thyssen et al., 2008b, 2009; Ribalet et al., 2010).

Based on this approach, a high-frequency study of the phytoplankton community structure in the North Sea was conducted. The in situ observations from SFC have been used



**Figure 1.** Flow cytometry sampling points superimposed on the mixed layer depth (m) calculated with modelled temperature of the water column from the FOAM AMM7 (average values from 08 to 12 May 2011). Chosen stations for phytoplankton pictures collection with the flow cytometer are labelled (ST: station; ST4, ST6, ST13). Yellow squares correspond to MODIS matching points for non-turbid waters selected between 06:00 and 18:00.

for the first time and as a first trial to label PHYSAT anomalies detected during the sampling period. Thus, the available data set makes it possible to distinguish between different water-leaving radiance anomaly signatures in which significantly distinct phytoplankton community structures can be described, rather than just the dominant communities, as is the case in previous studies. Our results are an improvement over conventional approaches as they allow the distribution of phytoplankton community structure to be characterized at a high resolution, from both in situ and day-to-day water-leaving radiance anomaly maps specific to the study area.

## 2 Materials and methods

Samples were collected during the PROTOOL/DYMAPHY-project cruise on board the RV *Cefas Endeavour* from the 08 to 12 May 2011 in the south-west region of the North Sea (Fig. 1). Automated coupled sampling using a Pocket-FerryBox (PFB) and a Cytosense scanning flow cytometer (SFC, Cytobuoy b.v.) started on the 08 May at 09:00 UTC and ended on the 12 May at 04:00 UTC. Water was continuously collected from a depth of 6 m and entered the PFB at a pressure of 1 bar maximum. Subsurface discrete samples were collected using Niskin bottles on a rosette and analysed using a second Cytosense SFC (stations 4, 6 and 13 were used in this paper, Fig. 1).

### 2.1 Phytoplankton community structure from automated SFC

Phytoplankton abundance and group description were determined by using two Cytosense SFCs (Cytobuoy b.v.), one was fixed close to the PFB and sampling the continuous flow of pumped sea water, the second one was used for pictures collection from discrete samples. These instruments are dedicated to phytoplankton single-cell recording, enabling cells from 1 to 800  $\mu\text{m}$  and several millimetres in length to be analysed routinely in 1–10  $\text{cm}^3$  of sea water. Each single cell or particle in suspension in the solution passes through the laser beam thanks to the principle of hydrodynamic focusing. The instrument then records the resulting optical pulse shapes and counts each single particle.

#### 2.1.1 Automation of the continuous flow sampling

Automated measurements were run from the continuous flow of sea water passing through the PFB. Samples for SFC were automatically collected from a 450  $\text{cm}^3$  sampling unit where water from the continuous flow was periodically stabilized. This sampling unit was designed to collect bypass water from the 1 bar PFB inlet. The sampling unit water was replaced within a minute. One of the Cytosense instruments was directly connected to the sampling unit and two successive analyses with two distinct protocols were scheduled automatically every 10 min.

#### 2.1.2 Flow cytometry analysis

A calibrated peristaltic pump was used to estimate the analysed volumes and send the sample to the SFC optical unit. Suspended particles were then separated using a laminar flow and subsequently crossed a laser beam (Coherent Inc.; 488 nm, 20 mV). The instrument recorded the pulse shapes of forward scatter (FWS) and sideward scatter (SWS) signals as well as red, orange and yellow fluorescence (FLR, FLO, FLY respectively) signals for each chain or single cell. The Cytosense instrument was equipped with two sets of photomultiplier tubes (PMTs) (high- and low-sensitivity modes), resolving a wider range of optical signals from small ( $\sim < 10 \mu\text{m}$ ) to large particles ( $\sim < 800 \mu\text{m}$ ). Two trigger levels were applied on the high-sensitivity PMT to discriminate highly concentrated eukaryotic picophytoplankton and cyanobacteria (trigger level: FLR 10 mV; acquisition time: 180 s; sample flow rate:  $4.5 \text{ mm}^3 \text{ s}^{-1}$ ), from less concentrated nano- and microphytoplankton (trigger level: FLR 25 mV, acquisition time: 400 s; sample flow rate:  $9 \text{ mm}^3 \text{ s}^{-1}$ ). Setting the trigger on red fluorescence was preferred to the commonly FWS or SWS triggering as a tradeoff between representative phytoplankton data sets and non-fluorescing particles/noise recording, but this procedure affected the SWS and FWS pulse shapes to some extent. To ensure good control and calibration of the instrument settings, a set of spherical

beads with different diameters was analysed daily. This allowed the definition of estimated-size calibration curves between total FWS (in arbitrary units, a.u.) and actual bead size. This set of beads included 1, 6, 20, 45 and 90  $\mu\text{m}$  yellow-green fluorescence from Polyscience Fluoresbrite microspheres; 10  $\mu\text{m}$  orange fluorescence Invitrogen polystyrene FluoroSpheres; and 3  $\mu\text{m}$  488 nm Cyto-cal™ alignment standards. To correct for the high refraction index of polystyrene beads that generates an underestimation of cell size, we defined a correcting factor by using 1.5  $\mu\text{m}$  silica beads (Polyscience, silica microspheres; Foladori et al., 2008). The phytoplankton community was described using several two-dimensional cytograms built with the Cytoclus® software. For each autofluorescing phytoplankton cell analysed, the integrated value of FLR pulse shape (total red fluorescence (TFLR), in a.u.) was calculated. For each phytoplankton cluster, the amount of TFLR is reported per unit volume (TFLR  $\text{cm}^{-3}$ , a.u.  $\text{cm}^{-3}$ ). The TFLR  $\text{cm}^{-3}$  of each resolved phytoplankton cluster was summed total TFLR  $\text{cm}^{-3}$  and was used as a proxy for chlorophyll *a* concentration. The TFLR signal was corrected from high-sensitivity PMT saturation signal in the case of highly fluorescing cells ( $> 4000$  mV) thanks to the low-sensitivity PMTs that behaved linearly with the high-sensitivity PMT, allowing the reconstruction of the high-sensitivity signal.

Discrete samples were collected during the cruise and analysed using a second Cytosense SFC equipped with the image-in-flow system. The samples were analysed using settings similar to those of the Cytosense coupled to the PFB. The amount of pictures was determined before each sample acquisition and pictures were randomly collected within the largest particles until the predetermined number of pictures was reached.

## 2.2 Temperature and salinity

The PFB (4H-JENA®) was fixed on the wet laboratory bench, close to the Cytosense, in order to share the same water inlet. This instrument recorded temperature and conductivity (from which salinity was computed) from the clean water supplied by the ship's seawater pumping system at a frequency of one sample every minute.

Within the PFB data set, only data related to automated SFC analyses were selected for plotting temperature–salinity diagrams.

## 2.3 Chlorophyll *a*

Samples for HPLC analyses and bench-top fluorometry (Turner® fluorometer) were collected randomly within 6 h periods before or after the supposed on-board Aqua MODIS (Moderate Resolution Imaging Spectroradiometer) sensor passage (12:30 UTC) to fulfil classical requirements in terms of in situ and remotely sensed matchup criteria. Samples were collected from the outlet of the PFB, filtered onto GF/F

filters and stored directly in a  $-80^\circ\text{C}$  freezer. The HPLC analyses were run on an Agilent Technologies, 1200 series. Pigments were extracted using 3  $\text{cm}^3$  ethanol containing vitamin E acetate as described by Claustre et al. (2004) and adapted by Van Heukelem and Thomas (2001). For bench-top fluorometry, the filters were subsequently extracted in 90 % acetone. Chlorophyll *a* (Chl *a*) concentration was evaluated by fluorometry using a Turner Designs model 10AU fluorometer (Yentsch and Menzel, 1963). The fluorescence was measured before and after acidification with HCl (Lorenzen, 1966). The fluorometer was calibrated using known concentrations of commercially purified Chl *a* (Sigma-Aldrich®).

The PFB was equipped with a multiple fixed-wavelength spectral fluorometer (AOA fluorometer, bbe®) sampling once every minute to obtain Chl *a* values.

MODIS Chl *a* values corresponded to level-3 binned data consisting of the accumulated daily level-2 data with a 4.6 km resolution.

## 2.4 Mixed layer depth

Daily water column temperature mapping was obtained from the Forecasting Ocean Assimilation Model 7 km Atlantic Margin model (FOAM AMM7), available from the MyOcean database (<http://www.myocean.eu.org/>). Model output temperature depths were as follows: 0, 3, 10, 15, 20, 30, 50, 75, 100, 125 and 150 m. Average mixed layer depth (MLD) on the five sampling days was calculated from daily temperature data sets. MLD was defined as the depth associated with an observed temperature difference of more than  $0.2^\circ\text{C}$  with respect to the surface (defined at 10 m; de Boyer Montégut et al., 2004).

## 2.5 Matching method between in situ and remotely sensed observations for phytoplankton community structure

The PHYSAT approach is based on the identification of specific signatures in the water-leaving radiance (nLw) spectra measured by an ocean colour sensor. It is described in detail by Alvain et al. (2005, 2008). Briefly, this empirical method has been first established by using two kinds of simultaneous and coincident measurements: nLw measurements and in situ measurements of diagnostic phytoplankton pigments. The presence of a specific phytoplankton group was established based on pigment analysis. In a first step, this approach has allowed for detection of four dominant phytoplankton groups identified within the available in situ data set, based on the pigment inventories. Four groups were detected first (diatoms, nanoeukaryotes, *Synechococcus* and *Prochlorococcus*) only in cases where they were dominant. Note that “dominant” here is used following the definition by Alvain et al. (2005) as situations in which a given phytoplankton group is a major contributor to the total diagnostic

pigments. This represented a limitation in using other potential phytoplankton in situ analysis. In a second step, coincident remotely sensed radiance anomalies (RAs) spectra between 412 and 555 nm were transformed into specific normalized water-leaving radiance or RA spectra in order to evidence the second-order variability of the satellite signal. This was done by dividing the actual nLw by a mean nLw model ( $nLw_{ref}$ ), which depends only on the standard Chl *a*.

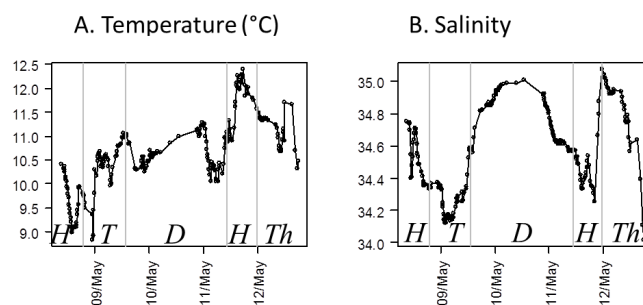
Then, coincident nLw spectra and in situ analysis were used to show that every dominant phytoplankton group sampled during in situ sampling is associated with a specific RA spectrum in terms of shape and amplitude. Based on this, a set of criteria has been defined in order to characterize each group in function of its RA spectrum, first by minimum and maximum values approach and more recently using neuronal network classification tools (Ben Mustapha et al., 2014). These criteria can be applied to global daily archives to get global maps of the most frequent group of dominant phytoplankton. When no group prevails over the month, the pixels are associated with an “unidentified” phytoplankton group.

In this study, remotely sensed observations were selected on the basis of quality criteria that ensured a high degree of confidence in PHYSAT as described in Alvain et al. (2005). Thus, pixels were only considered when clear-sky conditions were found and when the aerosol optical thickness, a proxy of the atmospheric correction steps quality, was lower than 0.15. The effects of sediments and/or coloured dissolved organic matter (CDOM) were minimized by focusing on phytoplankton dominated waters as defined from the optical typology described in Vantrepotte et al. (2012). Waters classified as turbid were therefore excluded from the empirical relationship since the PHYSAT method is currently not available for such areas. Waters classified as non-turbid using the same criteria were selected and the PHYSAT algorithm applied to them. To link coincident in situ and remotely sensed observations, a matchup exercise was carried out. Matching points between in situ SFC samples (considered as in situ data) and 4.6 km resolution MODIS pixels (highest level-3 binned resolution) were selected by comparing their concomitant position day after day. When more than one in situ SFC sample was found in a MODIS pixel the averaged value of TFLR ( $a.u. cm^{-3}$ ) for each phytoplankton group was calculated.

## 2.6 Statistics

Statistics were run in R software (CRAN, <http://cran.r-project.org/>). Before running correlation and comparison tests on the different in situ sensors (for Chl *a* and total TFLR), the Shapiro normality test was run. When data did not follow a normal distribution, a Wilcoxon signed rank test was applied. Correlations between data were defined using Spearman's rank correlation coefficient.

As the PHYSAT approach is based on the link between specific RA spectra (in terms of shapes and amplitudes)



**Figure 2.** (a) Temperature and (b) salinity measured with the PocketFerryBox. Presented data are selected to match the scanning flow cytometry collected samples. Grey bars delimit the traversed marine areas: H, Humber; T, Tyne; D, Dogger; Th, Thames.

and specific phytoplankton composition, the set of remotely sensed data was separated into distinct groups with similar RAs. The PHYSAT RA found over the studied area and matching the in situ SFC samples was differentiated by applying a *k*-means clustering partitioning method (tested either around means (Everitt and Hothorn, 2006) or around centroids (Kaufman and Rousseeuw, 1990)). The appropriate number of clusters (distinct PHYSAT RA) was decided with a plot of the within groups sum of squares by number of clusters extracted. A hierarchical clustering was computed to illustrate the *k*-means clustering method. Within each *k*-means cluster, SFC-defined phytoplankton community was described and differences between TFLR  $cm^{-3}$  per phytoplankton group were compared within the different PHYSAT spectra clusters using the Wilcoxon signed rank test.

## 3 Results

### 3.1 Temperature, salinity and mixed layer depth

The sampling track crossed four North Sea marine zones: western Humber, Tyne, Dogger, eastern Humber and Thames (Fig. 1). The PFB measured temperature associated with the SFC samples ranged between 8.83 and 12.39 °C with an average of  $10.67 \pm 0.72$  °C. Minimal temperatures were found in the western Humber area (53–55° N and  $-1$ – $1$ ° E) and maximal temperatures were found in the Thames area (54–52° N, 2–4° E; Fig. 2a). Salinity from the PFB ranged between 34.02 and 35.07 with an average value of  $34.6 \pm 0.26$ . Highest salinity values were found in the Dogger area above 55° N and in the limit between the Humber and the Thames areas, 53° N. Lowest salinity values were found in the Tyne area around 55° N,  $-1$ ° E and in the Thames area (by the Thames plume; Fig. 2b).

The mixed layer depth calculated from the FOAM AMM7 was used to illustrate the physical environment of the traversed water masses. Different mixed layer depth characterized the sampled area, with deeper MLD in the northern part (15 to 30 m) and a shallower MLD in the southern area



( $\sim 10$  m, Fig. 1). A tongue of shallow MLD ( $\sim 10$  m) surrounded by deeper MLD ( $\sim 20$  m) crossed the sampling area at  $\sim 55^\circ$  N and  $\sim 3^\circ$  E.

### 3.2 Phytoplankton community from SFC analysis

A total of 247 SFC validated analysed samples were collected during this experiment. Average distance between samples collected with the automated SFC was of  $2.2 \pm 1.8$  km when the system ran continuously. The sampling rate was  $25 \pm 45$  min. Up to 10 phytoplankton clusters were resolved (Fig. 3) based on their optical fingerprints from SFC analysis. The 10 discriminated clusters were labelled as follows: PicoORG (Fig. 3a), PicoRED (Fig. 3a), NanoSWS (Fig. 3b), NanoRED1 (Fig. 3c), NanoRED2 (Fig. 3b and c); Micro1 (Fig. 3c and d), MicroLowORG (Fig. 3a), NanoORG and MicroORG (Fig. 3d), and Micro2 (Fig. 3d). Pictures were randomly collected (between 20 and 60 pictures per sample within Micro2) and were used to illustrate the most frequently encountered class (Fig. 4). Station 4 (Fig. 4a), sampled at 12 m, showed mostly a mixture of dinoflagellate-like cells (25 pictures collected within 47 of the Micro2 cluster's counted cells). Station 6 (Fig. 4b) sampled at 7 m, showed pictures composed mainly of diatoms (*Thalassiosira* and *Chaetoceros*, 11 images collected among 28 of the Micro2 cluster's counted cells). Station 13 (Fig. 4c) sampled at 7 m, gave a mixture of diatoms and dinoflagellates (58 pictures shot among the 99 of the Micro2 cluster's counted cells: 5 *Chaetoceros*, 30 *Rhizosolenia*, 10 dinoflagellates, 1 flagellate and several unidentified cells).

Cell abundance, average cell size and TFLR  $\text{cm}^{-3}$  for each cluster are illustrated in Figs. 5, 6 and 7 respectively. Average abundance and sizes of each cluster are addressed in Table 1. PicoRED cells were, on average, the most abundant in the studied area (Fig. 5b and Table 1), followed by NanoRED2, PicoORG, NanoRED1 and Micro1 (Fig. 5f, a, c and g respectively, Table 1). The other clusters' abundances were below  $1.10^2$  cells  $\text{cm}^{-3}$  on average (Fig. 5d, e, h, i, j; Table 1). PicoORG cells were the smallest estimated (Fig. 6a, Table 1), while the largest estimated were MicroORG, MicroLowORG and Micro2 cells (Fig. 6h, i and j respectively, Table 1).

The western Humber zone (Fig. 1) was marked by the highest abundances of PicoRED, PicoORG, MicroORG, MicroLowORG and Micro1 (Fig. 5b, a, h, i and g). The eastern part of the Humber zone (Fig. 1) was marked by the highest abundances of NanoRED1 and Micro1 (as for the western part; Fig. 5c, g). High values of PicoRED were also observed in this part of the Humber zone. The Tyne zone (Fig. 1) had the highest abundance of NanoORG and Micro2 clusters (Fig. 5d, j), and the lowest abundance of PicoRED and NanoSWS. High abundance values of MicroORG were also observed (Fig. 5h). The size of the NanoSWS and the NanoRED2 were the greatest in this zone (Fig. 6e, f). The Dogger zone (Fig. 1) was dominated in terms of abundance by the PicoRED and the PicoORG, where the sizes were

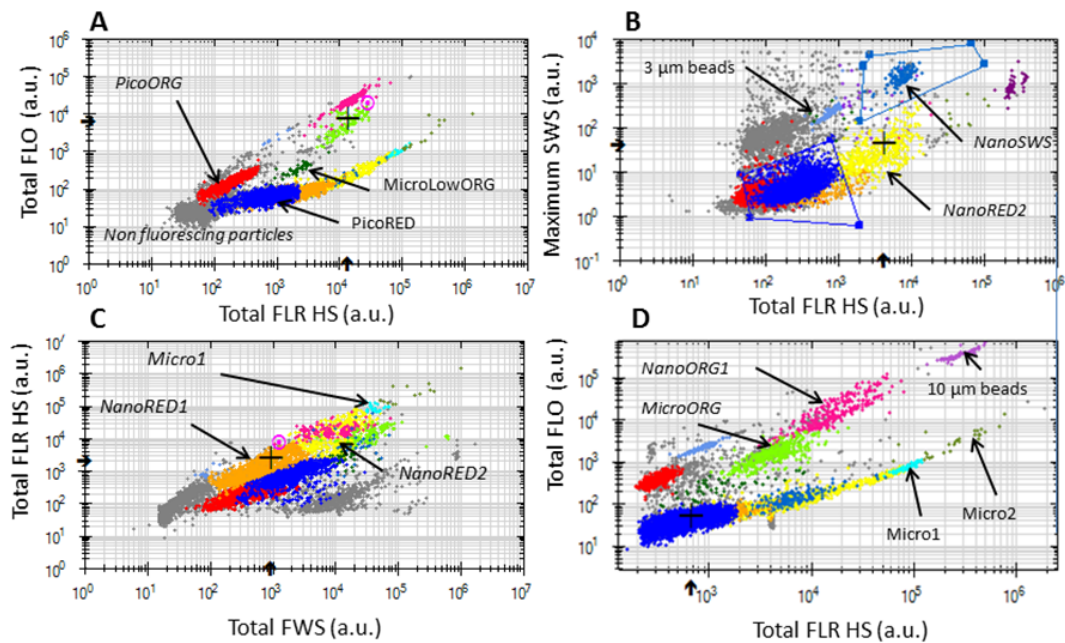
the smallest (Fig. 6b and a) but did not show the highest abundance values. The cell sizes of Micro1 were the greatest in this zone (Fig. 6g). Observations in the Thames zone (Fig. 1) produced the maximal abundance of NanoSWS and NanoRED2 (Fig. 6e, f). Sizes were the greatest for PicoORG, NanoRED1 and NanoSWS (together with the Tyne zone; Fig. 6a, c, e). TFLR follows similar trends to abundance (Fig. 7).

### 3.3 Comparison between scanning flow cytometry, total red fluorescence and chlorophyll *a* analysis

Several bench-top and in situ instruments, i.e. HPLC, Turner fluorometer and the PFB AOA fluorometer, were used to give exact and/or proxy values of Chl *a*. Similarly to temperature and salinity, the PFB AOA fluorometer samples were selected to match SFC samples. Overall values of Chl *a* originating from these instruments were superimposed to the total TFLR  $\text{cm}^{-3}$  (by summing up the TFLR  $\text{cm}^{-3}$  values of the observed cluster) and the MODIS Chl *a* values matching the points in Fig. 8. HPLC values varied between 0.21 and  $7.58 \mu\text{g dm}^{-3}$  with an average of  $1.57 \pm 2.01 \mu\text{g dm}^{-3}$ . Turner fluorometer values varied between 0.41 and 2.31 with an average of  $1.24 \pm 0.7 \mu\text{g dm}^{-3}$ . AOA fluorometer values varied between 0.73 and  $28.53 \mu\text{g dm}^{-3}$  with an average of  $4.44 \pm 5.54 \mu\text{g dm}^{-3}$ . The total TFLR  $\text{cm}^{-3}$  from SFC, normalized with  $3 \mu\text{m}$  bead red fluorescence varied between 5011 and  $399\,200 \text{ a.u. cm}^{-3}$  with an average value of  $64\,394.5 \pm 67\,488.4 \text{ a.u. cm}^{-3}$ . The Shapiro normality test showed non-normality for each of the variables, so a Wilcoxon test was run between techniques involving similar units. HPLC and Turner Chl *a* concentrations were not significantly different ( $n = 9$ ,  $p = 0.65$ ) and the correlation was significant (Spearman,  $r = 0.98$ , Table 2). The absolute values from both techniques were significantly different from the AOA fluorometer values ( $n = 9$ ,  $p < 0.001$  for both) but were significantly correlated (Spearman,  $r = 0.86$  and  $r = 0.82$  for the HPLC and Turner fluorometer respectively, Table 2). The SFC total TFLR ( $\text{a.u. cm}^{-3}$ ) from summing up the TFLR of all the phytoplankton groups was used for comparison with other Chl *a* determinations. Correlations with the AOA fluorometer, HPLC and Turner fluorometer results were all significant as shown in Table 2.

### 3.4 PHYSAT anomalies and SFC phytoplankton community composition, extrapolation to the non-turbid classified waters in the North Sea

Considering our database of coincident SFC in situ and MODIS remotely sensed observations, a total of 56 matching points were identified, from which only 38 points corresponded to non-turbid classified waters. Matching points between in situ sampling and remote sensing pixels for the purpose of the PHYSAT empirical calibration were selected in the daytime period 06:00–18:00. Additional samples col-



**Figure 3.** (a) TFLO vs. TFLR (a.u.) cytogram with an FLR trigger level at 10 mV showing the PicoORG, PicoRED and MicroLowORG clusters. (b) Maximum SWS (a.u.) vs. TFLR (a.u.) cytogram with an FLR trigger level at 10 mV showing the NanoSWS and NanoRED2 clusters and 3  $\mu\text{m}$  beads. (c) TFLR (a.u.) vs. TFWS (a.u.) cytogram with an FLR trigger level at 10 mV showing the NanoRED1, NanoRED2 and Micro1 clusters. (d) TFLO vs. TLFR (a.u.) cytogram with an FLR trigger level of 25 mV showing the NanoORG1, MicroORG, Micro1 and Micro2 clusters and 10  $\mu\text{m}$  beads. Cluster colours are consistent across different panels.

**Table 1.** Minimal, maximal, average and standard deviation of abundance ( $\text{cells cm}^{-3}$ ) for each defined phytoplankton cluster followed by the size-estimated ( $\mu\text{m}$ ) average  $\pm$  standard deviation values.

Cluster's name	Abundance min–max ( $\text{cells cm}^{-3}$ )	Average abundance $\pm$ SD ( $\text{cells cm}^{-3}$ )	Average size $\pm$ SD ( $\mu\text{m}$ )
PicoORG	25–18 710	$1559 \pm 2821$	$1.09 \pm 0.17$
PicoRED	275–26 960	$5674 \pm 4647$	$1.83 \pm 0.32$
NanoRED1	97–7172	$888 \pm 942$	$2.33 \pm 0.33$
NanoORG	< 10–759	$87 \pm 150$	$5.8 \pm 2.1$
NanoSWS	< 10–376	$99 \pm 93$	$10 \pm 2.56$
NanoRED2	200–54 880	$4187 \pm 7878$	$6.4 \pm 1.4$
Micro1	< 10–4392	$420 \pm 769$	$16.9 \pm 5.6$
MicroORG	< 10–306	$48 \pm 60$	$23.5 \pm 10$
MicroLowORG	< 10–687	$69 \pm 111$	$23.75 \pm 8.6$
Micro2	< 10–420	$37 \pm 59$	$65.5 \pm 21.0$

lected out of this period results in the loss of correlation significance between MODIS Chl *a* and the AOA fluorometer Chl *a* within the SFC data set ( $r = 0.49$ ,  $p = 0.06$ ,  $n = 15$ , Spearman rank test), leaving 15 SFC matching points (Figs. 1 and 8). The Chl *a* values found in the matching points were lower than  $0.5 \mu\text{g dm}^{-3}$  (Fig. 8).

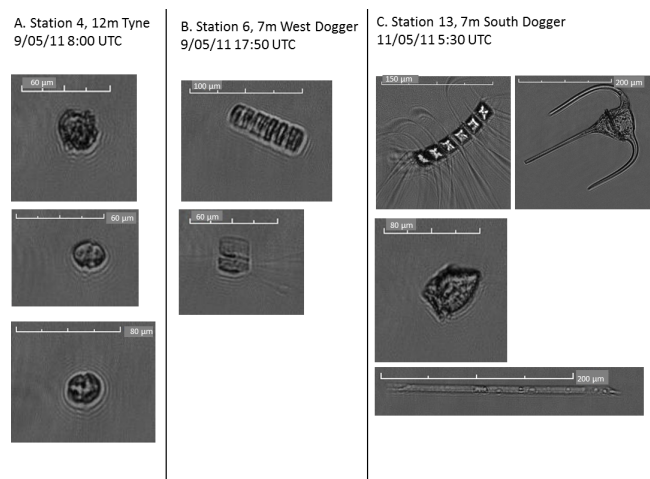
PHYSAT RAs were calculated based on the method of Alvain et al. (2005) and the average signal was recalculated to fit the sampling area. The RAs were separated into two distinct anomalies using the within sum-of-squares minimization (Fig. 9a) and illustrated on a dendrogram (Fig. 9b).

These two distinct types of anomalies in terms of shape and amplitude are illustrated in Fig. 9c and d and the anomaly characteristics are summarized in Table 3. The first anomaly set (N1, Table 3) was composed of 5 spectra that had overall higher values than the second anomaly set (N2, Table 3), composed of the other 10 spectra. The corresponding SFC cluster proportion of TFLR  $\text{cm}^{-3}$  to the overall total TFLR  $\text{cm}^{-3}$  found within the two anomalies are illustrated in Fig. 10a and b. Similarly, the relative difference of each phytoplankton cluster's TFLR  $\text{cm}^{-3}$  within the two anomalies to its overall TFLR  $\text{cm}^{-3}$  median value



**Table 2.** Spearman's rank correlation coefficient between the different methods used for chlorophyll *a* estimates and with the total TFLR from the scanning flow cytometer per unit volume.

Spearman's correlation coefficient	SFC TFLR cm <sup>-3</sup> (a.u.) <i>n</i> = 247	AOA fluorometer (μg dm <sup>-3</sup> ) <i>n</i> = 254	HPLC Chl <i>a</i> (μg dm <sup>-3</sup> ) <i>n</i> = 12	Turner Chl <i>a</i> (μg dm <sup>-3</sup> ) <i>n</i> = 9
SFC	1	0.93***	0.82***	0.82***
Total TFLR cm <sup>-3</sup> (a.u.)				
AOA fluorometer (μg dm <sup>-3</sup> )		1	0.86***	0.82***
HPLC Chl <i>a</i> (μg dm <sup>-3</sup> )			1	0.98***
Turner Chl <i>a</i> (μg dm <sup>-3</sup> )				1

\*\*\* *p* < 0.001; \*\* *p* < 0.01.**Figure 4.** Pictures of cells from the scanning flow cytometer image in flow device collected within the Micro2 cluster. Surface closest stations where Micro2 abundance was the highest (station 4, 6, and 13) are illustrated.

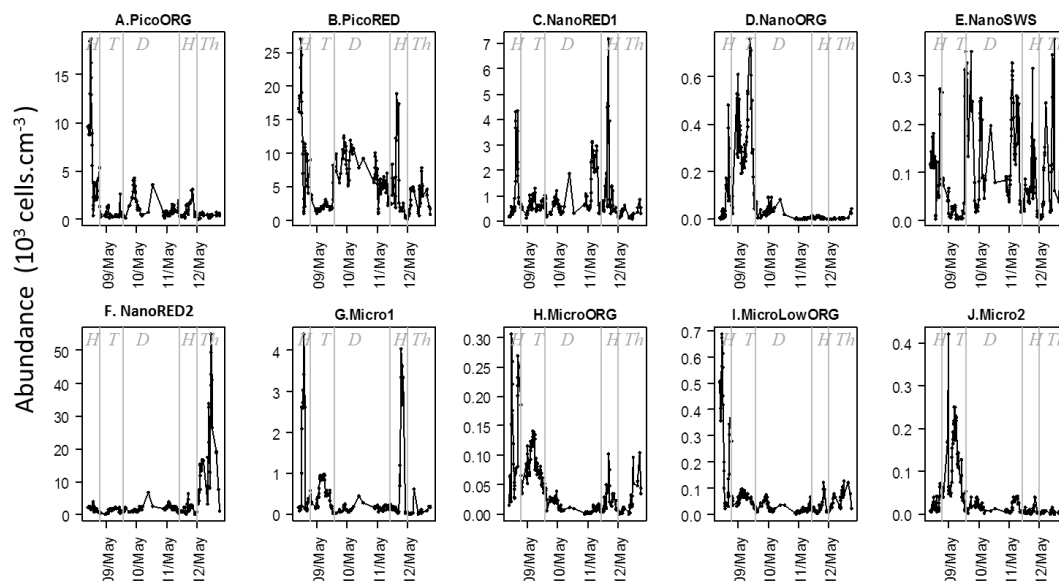
are illustrated in Fig. 10c and d. Considering our previous analyses, N1 and N2 community structures were dominated by NanoRED2 TFLR cm<sup>-3</sup> (Fig. 10a and b). Regarding each distinct cluster relative difference to its overall median value, samples corresponding to N1 anomalies had significantly higher NanoRED1 TFLR cm<sup>-3</sup>, higher NanoORG TFLR cm<sup>-3</sup> and higher MicroORG TFLR cm<sup>-3</sup>; while the samples corresponding to N2 anomalies had only higher PicoRED TFLR cm<sup>-3</sup> (Wilcoxon rank test, N1, *n* = 5; N2, *n* = 10, Fig. 10c and d). Temperature, salinity, MODIS Chl *a* and SFC total TFLR cm<sup>-3</sup> found in each in situ sample corresponding to both sets of anomalies are illustrated in Fig. 11. Samples in the N1 pixels were found to be significantly warmer ( $11.3 \pm 0.32$  °C in N1 and  $10.94 \pm 0.23$  °C in N2, *p* < 0.1, Wilcoxon rank test, Fig. 11a), not significantly different in terms of salinity, although N1 waters were less salty (Fig. 11b), significantly richer in Chl *a* ( $0.87 \pm 0.19$  μg dm<sup>-3</sup>

in N1 and  $0.43 \pm 0.07$  μg dm<sup>-3</sup> in N2, *p* < 0.01, Wilcoxon rank test, Fig. 11c), but not significantly different in total TFLR cm<sup>-3</sup> values (Fig. 11d).

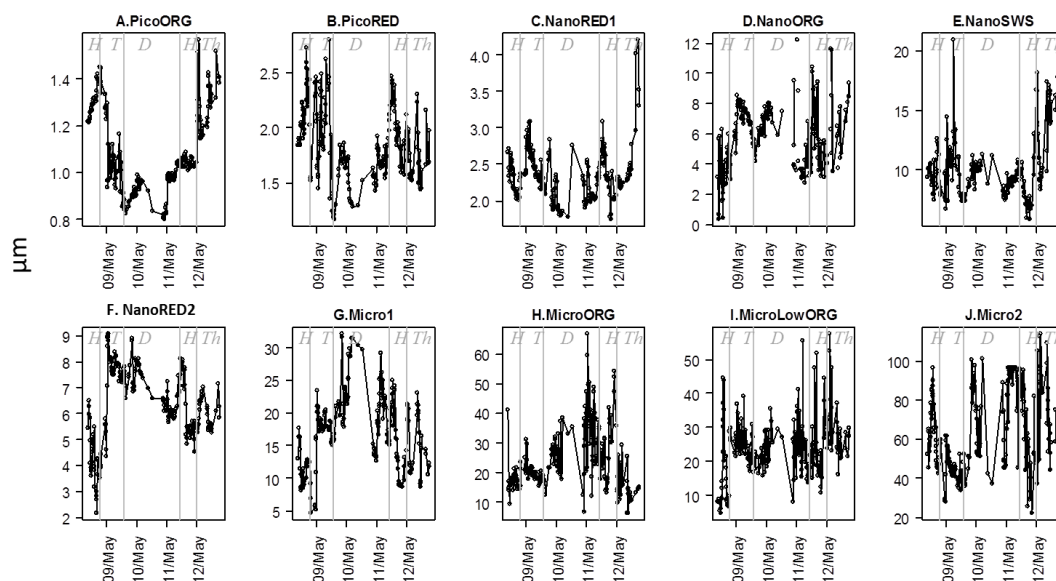
Considering the specificity of each set of RAs in terms of phytoplankton and environmental conditions, it is interesting to map their frequency of detection in our area of interest. A pixel is associated with an anomaly when the RA values at each wavelength fulfilled the criteria of Table 3. The frequencies of occurrence over the sampling period based on a composite overlapping the sampling period are illustrated in Fig. 12a and b. Pixels corresponding to N1 anomaly were mostly found in the 54–56° N area (Dogger and German, Fig. 1), following the edge between the shallow MLD tongue and the deepest MLD zones (Fig. 1), but also near the Northern Scottish coast (Forth, Forties and Cromarty, Fig. 12a), where MLD was shallow (Fig. 1). The N2 anomaly pixels were mostly found in the Forties, Fisher and German area, on much smaller surfaces (Fig. 12b).

#### 4 Discussion

Water mass dynamics generates patchiness which modifies phytoplankton community structure and makes it difficult to follow a population over time and at a basin scale. In this context, the hourly observation of phytoplankton at the single-cell and community level and its daily spatial structure resolution from extrapolation using PFT remote sensing mapping can help to follow spatial distribution of phytoplankton communities. The improvement of PFT mapping, i.e. from dominant groups to the community structure resolution, is one of the ideas generated in this paper. This paper shows for the first time that SFC data sets can be used for labelling PHYSAT anomalies at the daily scale. The SFC is a powerful automated system aimed to be implemented in several vessels of opportunity and monitoring programs for future PHYSAT anomalies identification at the daily scale and at the community structure level. A recent publication that enables the classification of a large range of anomaly spectra



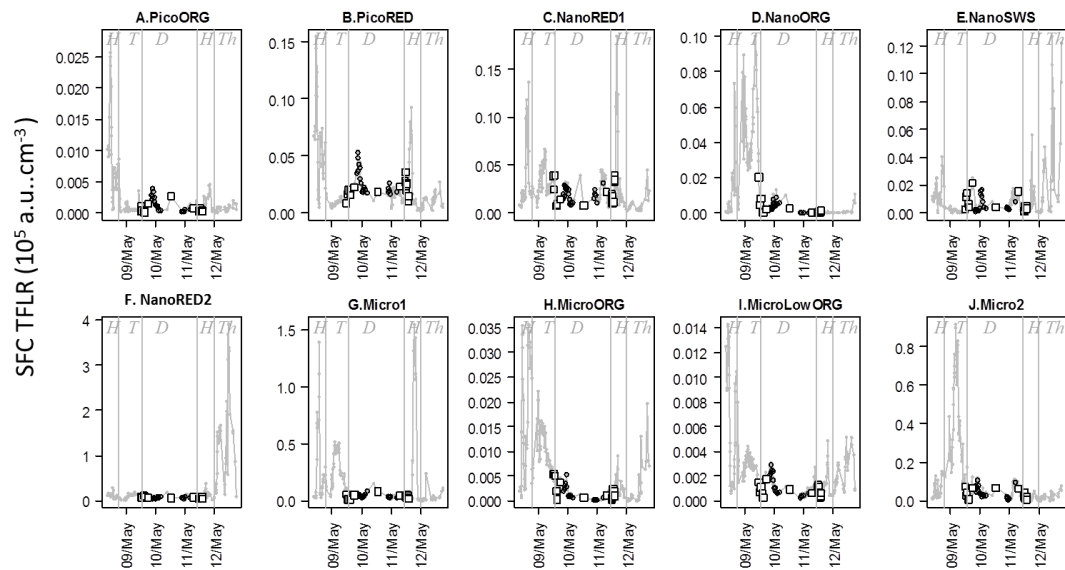
**Figure 5.** Abundance ( $10^3 \text{ cells cm}^{-3}$ ) of each phytoplankton cluster resolved with the scanning flow cytometer. In order to show evidence of distribution, scales have not been homogenized. Grey bars separate the traversed marine areas: H, Humber; T, Tyne; D, Dogger; Th, Thames.



**Figure 6.** Average estimated size for each phytoplankton cluster resolved with the scanning flow cytometer. In order to show evidence of distribution, scales have not been homogenized. Grey bars separate the traversed marine areas: H, Humber; T, Tyne; D, Dogger; Th, Thames.

(Ben Mustapha et al., 2014) should help to make this easier. Thus, the knowledge and the tools are available, which augurs well for understanding phytoplankton heterogeneity and variability over high-resolution spatio-temporal scales. Indeed, resolving phytoplankton community structure over the sub-mesoscale and hourly scale is a good way to understand the influence of environmental short-scale events (Thyssen et al., 2008a; Lomas et al., 2009), seasonal (or not) succession schemes, resilience capacities of the community after environmental changes and impacts on the specific growth

rates (Sosik et al., 2003; Dugenne et al., 2014). Resolving the community structure and the causes of variations at several temporal and spatial scales has great importance in further understanding the phytoplankton functional role in biogeochemical processes. This scale information is currently lacking for the global integration of phytoplankton in biogeochemical models, mainly due to the lack of adequate technology needed to integrate the different levels of complexity linked to phytoplankton community structure.



**Figure 7.** Scanning flow cytometer total red fluorescence per unit volume (SFC TFLR  $\text{cm}^{-3}$ ) for each phytoplankton cluster. Superimposed large white squares are the matching points with MODIS pixels in non-turbid waters between 06:00 and 18:00. Diamonds correspond to the night SFC samples matching MODIS passage but are not taken into account because of the possible differences between day and night community structures. In order to show evidence of distribution, scales have not been homogenized. Grey bars separate the traversed marine areas: H, Humber; T, Tyne; D, Dogger; Th, Thames.

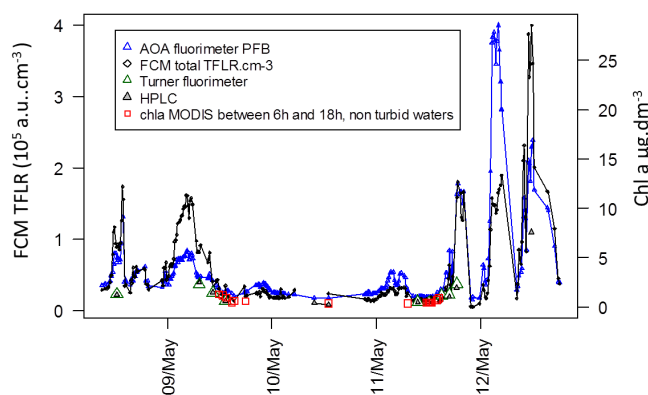
**Table 3.** Minimal and maximal radiance anomaly (RA) values for each collected MODIS wavelength (nm) that characterizes the edges for the two PHYSAT RA spectra (N1 and N2) observed in this study.

Node	RA (412) nm	RA (412) nm	RA (443) nm	RA (443) nm	RA (488) nm	RA (488) nm	RA (531) nm	RA (531) nm
	Min	Max	Min	Max	Min	Max	Min	Max
N1 ( $n = 5$ )	1.06	1.30	0.96	1.24	0.91	1.10	0.91	1.09
N2 ( $n = 10$ )	0.74	0.97	0.75	0.93	0.70	0.89	0.72	0.93

Phytoplankton community description

Phytoplankton community structure from automated SFC is described through clusters of analysed particles sharing similar optical properties. Thus cluster identification at the species level is speculative and, as with any cytometric optical signature, it needs sorting and genetic or microscopic analysis to be resolved at the taxonomic level. This deep level of phytoplankton diversity resolution requirement is not needed in biogeochemical processes studies in which functionality is preferred to taxonomy (Le Qu  r   et al., 2005). In this context, most of the optical clusters could be described at the plankton functional type level because of some singular similarities combining abundance, size, pigments and structure proxies obtained from optical SFC variables (Chisholm et al., 1988; Veldhuis and Kraay, 2000; Rutten et al., 2005; Zubkov and Burkill, 2006). The Cytobuoy instrument used in this study was developed to identify phytoplankton cells from picophytoplankton up to large microphytoplankton with complex shapes, even those forming chains. Indeed, the volume analysed was close to  $3\text{ cm}^3$ ,

giving accurate counts of clusters with abundances as low as  $30\text{ cells cm}^{-3}$  (100 cells counted), under which the coefficient of variation exceeds 10 % (Thyssen et al., 2008a). Such low abundances were found for some of the clusters identified in this study (NanoORG, MicroORG and Micro2 clusters for which the median abundance value was close to  $30\text{ cells cm}^{-3}$ ), in agreement with concentrations observed in previous studies for the possibly related phytoplankton genus, as discussed below, i.e. cryptophytes (Buma et al., 1992), diatoms and dinoflagellates (Leterme et al., 2006). Previous comparisons between bench-top flow cytometry and remote sensing (Zubkov and Quartly, 2003) could technically not include the entire size range of nano- to microphytoplankton. The Cytobuoy SFC resolves cells up to  $800\text{ }\mu\text{m}$  in theory, but this depends on the counted cells in the volume sampled (which is approximately 10 times more than classical flow cytometry). However, the largest part of phytoplankton production in the North Sea is driven by cells  $<20\text{ }\mu\text{m}$  (Nielsen et al., 1993), and we can consider this size class to be correctly counted with the SFC. Furthermore, significance between the sum of each cluster’s TFLR (total TFLR  $\text{cm}^{-3}$ )



**Figure 8.** SFC total TFLR per  $\text{cm}^{-3}$  compared to Chl *a* analyses using different instruments. Refer to “Material and methods” for a detailed description of each method. Blue triangles: AOA fluorimeter PFB (Chl *a*  $\mu\text{g dm}^{-3}$ ). Black diamonds: SFC total TFLR  $\text{cm}^{-3}$  (a.u.  $\text{cm}^{-3}$ ). Green triangles: Turner fluorimeter (Chl *a*  $\mu\text{g dm}^{-3}$ ). Grey triangles: HPLC (Chl *a*  $\mu\text{g dm}^{-3}$ ). Red squares: MODIS Chl *a* values corresponding to non-turbid waters (after Vantrepotte et al., 2012) and selected between 06:00 and 18:00 (Chl *a*  $\mu\text{g dm}^{-3}$ ).

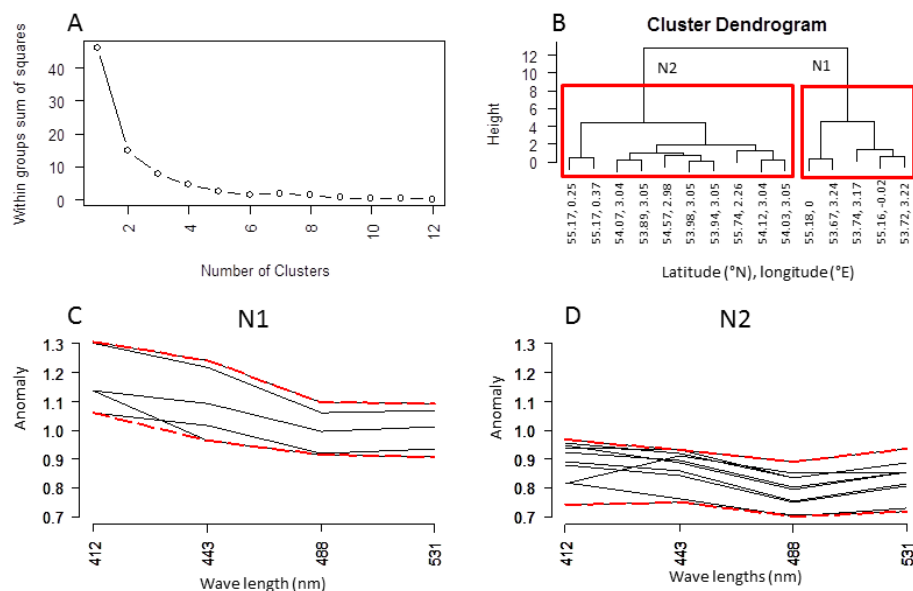
and bulk chlorophyll measurements (Table 2 and Fig. 7) confirms the power of SFC for phytoplankton community resolution.

PicoORG cells could be labelled *Synechococcus* (Waterbury et al., 1979; Li, 1994) based on their phycoerythrin pigment fluorescence (Fig. 3a), and their size could be estimated between 0.8 and 1.2  $\mu\text{m}$  (Fig. 6a) and their abundances around  $10^2$ – $10^4$  cells  $\text{cm}^{-3}$  (Fig. 5a). PicoRED cells could be autotrophic eukaryotic picoplankton, as their cell size varied between 1 and 3  $\mu\text{m}$  (Fig. 6b) and contained Chl *a* as their main pigment. Thus, PicoORG and PicoRED clusters contained the smallest cells found above the so called non-fluorescing/electronic noise background of this instrument (Fig. 3a and b). As *Prochlorococcus* is expected to be absent in these waters, we can conclude that the cytometer observed most of the phytoplankton size classes when sufficiently concentrated in the analysed volume. NanoRED1 cells exhibited abundance and sizes close to those of *Phaeocystis* haploid flagellate cells (3–6  $\mu\text{m}$ , Fig. 6c; Rousseau et al., 2007, and references therein). Their presence, mostly in the Humber area (Fig. 5c), suggests that this area corresponded to a period between the inter-bloom (haploid stage, life stage persisting between two blooms of diploid colonial cells) and the start of the *Phaeocystis* bloom (Rousseau et al., 2007). Similarly, NanoRED2 could be referred to as *Phaeocystis* diploid flagellates or free colonial cells, based on their size and abundance (4–8  $\mu\text{m}$  and  $0$ – $50 \times 10^3$  cells  $\text{cm}^{-3}$  (Figs. 6f and 5f respectively), Rousseau et al., 2007). Their maximal abundance was found in the southern North Sea Thames area. Their presence suggested an area of *Phaeocystis* colonial blooming stage (Guiselin, 2010).

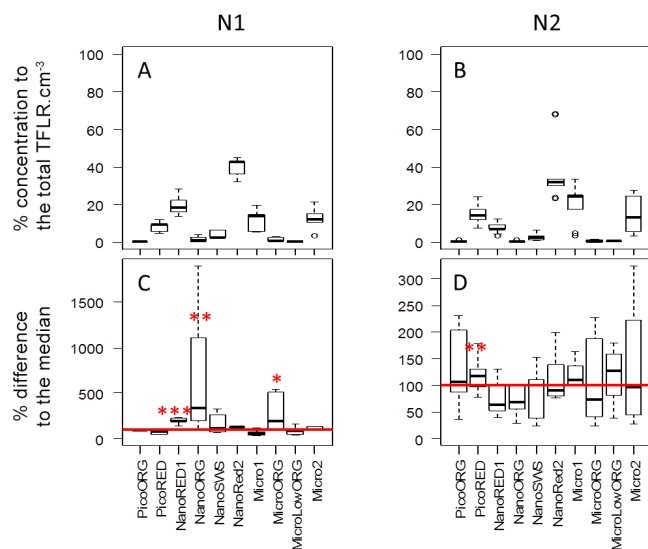
MicroORG cells, whose abundance and size are close to those of some large cryptophytes cells, were found in the same areas as NanoORG cells (Fig. 5h and d respectively), which are related to smaller Cryptophyceae cells. MicroLowORG cells with sizes close to that of MicroORG cells, and although low in concentration, emitted orange fluorescence and could represent cells with little phycoerythrin content. NanoSWS cluster was composed of high-SWS scattering cells that are consistent with the signature of Coccolithophoridae cells (van Bleijswijk et al., 1994; Burkill et al., 2002). The observed abundances did fit with the low Coccolithophoridae concentrations observed in the southern North Sea (Houghton, 1991). The Micro1 cluster could correspond to small nanoplanktonic diatom cells ( $\sim 10$ – $30 \mu\text{m}$ , Fig. 6g). Regarding the size range, this cluster could represent several species. They were mainly found within the Humber area. The Micro2 cluster was mostly composed of large diatoms (*Rhizosolenia*, *Chaetoceros*) and dinoflagellates (Fig. 4) within the size range of 40– $100 \mu\text{m}$  (Fig. 6j) as observed in the pictures (Fig. 4). The presence of these groups illustrates the boundary between the end of the diatom bloom and the development of a dinoflagellate bloom, from which it could be possible to make a link with the *Dinophysis norvegica* and *Alexandrium* early summer bloom, observed in the Tyne region by Dodge (1977). This is in agreement with the stratification observed within the Thames zone (Fig. 1).

### Phytoplankton community structure at the North Sea basin scale

The data sets from the spatial (km) and the temporal (hourly) scales for phytoplankton community structure based on single-cell optical properties are important for validating the methods describing phytoplankton community structure from space. Ocean algorithms need specific information on water properties and phytoplankton structure and are dependent on validation from in situ observations, which is always complex to collect and limited by sky condition criteria. The PHYSAT method was built on an empirical relationship between dominant phytoplankton functional types from in situ HPLC analysis and RA. The method was thus limited to dominance cases only as HPLC analysis cannot give us more information. The remote sensing synoptic extrapolation concerning phytoplankton community structure remains to be established and, in spite of a theoretical validation (Alvain et al., 2012), still depends on important in situ data point collection in order to build robust empirical relationships. In this study, the combination of phytoplankton high-frequency analysis from an automated SFC with the PHYSAT method proved to be an excellent calibration by giving an unprecedented amount of matching points for only two significant sampling days (number of analysed samples for non-turbid waters matching MODIS pixels: 38; number of samples used between 06:00 and 18:00: 15, corresponding to 39.5 % prof-



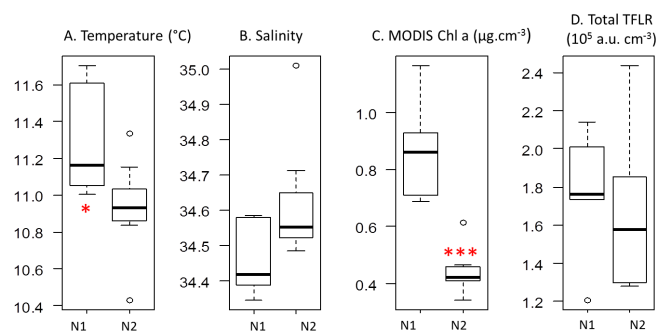
**Figure 9.** (a) Within sum of squares for the optimal number of  $k$  nodes selected corresponding to PHYSAT anomalies. (b) Cluster dendrogram defining the two main nodes grouping similar PHYSAT anomalies matchups (N1 and N2). (c, d) Corresponding RA spectra for N1 and N2. Red dashed lines correspond to the minima and maxima values of the spectra as described in Table 3.



**Figure 10.** (a, b) The clusters' proportional contribution to the total TFLR cm<sup>-3</sup> within each PHYSAT anomaly (N1 and N2). (c, d) Within each anomaly, the clusters' TFLR cm<sup>-3</sup> proportional difference to its median value calculated on the entire matching points data set. Wilcoxon rank test was run for each cluster between the two anomalies. \*\*\* $p < 0.001$ ; \*\* $p < 0.01$ ; \* $p < 0.1$ .

itability), compared to the 14% matching points from the GeP&CO data set (Alvain et al., 2005).

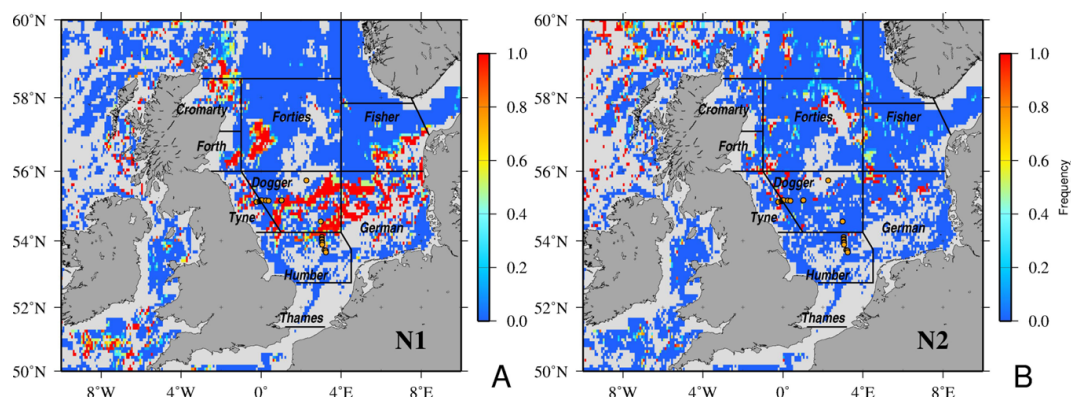
The combination of SFC and PHYSAT has shown that a first set of specific anomalies (N1) can be associated with NanoRED1, NanoORG and MicroORG, which con-



**Figure 11.** Box plots within each PHYSAT anomaly (N1, N2) of (a) temperature (°C), (b) salinity, (c) chlorophyll *a* (as estimated from MODIS level 3 binned) and (d) total TFLR (a.u. cm<sup>-3</sup>). Wilcoxon rank test was run for each parameter between the two anomalies. \*\*\* $p < 0.001$ ; \*\* $p < 0.01$ ; \* $p < 0.1$ .

tributed more to the total TFLR cm<sup>-3</sup> (a proxy of Chl *a*, Fig. 7, Table 2) than in the second set of anomalies (N2), in which PicoRED cells contributed significantly more to the total TFLR cm<sup>-3</sup>, as well as where Micro1 contribution to total TFLR cm<sup>-3</sup> was above its overall median value observed along the matching points (Fig. 10d). Spatial successions between diatoms (as could be found in the NanoRED1 and Micro1 clusters) and cryptophytes (corresponding to the NanoORG and MicroORG specific signatures) revealed differences in stratification, lower salinity and shallower MLD (Moline et al., 2014; Mendes et al., 2013). Indeed, the N1 anomaly corresponds to areas of low MLD (Fig. 1) following the main North Sea current from the south-west to the north-





**Figure 12.** (a, b) Frequency of occurrence of the two distinct anomalies (N1 and N2) over the North Sea during the sampling period (08 to 12 May 2011). Yellow squares correspond to MODIS matching points for non-turbid waters selected between 06:00 and 18:00 and used to distinguish N1 and N2 PHYSAT anomalies.

east (Holligan et al., 1989), surrounding the Dogger bank. This anomaly was also found on the north-western part of the northern North Sea, following the Scottish coastal water current with a shallow MLD (Figs. 1, 11a). The N2 anomaly was observed with the deeper MLD of the Forties, Fisher and German areas (Figs. 1 and 11b). These N2 areas corresponded to a phytoplankton community still blooming, while the N1 anomaly areas might be at a stage of late blooming, in which conditions fit Cryptophyceae development and grazing (cells of *Myrionecta rubra* were observed when using the image-in-flow system, not shown). These organisms were found to be dominant in the areas surrounding the Dogger bank from observations and counts carried out by Nielsen et al. (1993) during the same period.

In conclusion, our study of phytoplankton community structure distribution resolved at the sub-mesoscale evidenced the importance of the North Sea hydrological context. Significant differences between the two sets of anomalies observed during the sampling period are mainly due to cryptophyte-like cells and pico- to nanophytoplankton size class cells. This daily-scale resolution, thanks to high-resolution techniques combined with single-cell and remote technologies, will help in understanding the role of circulation and hydrological properties of the water masses on the phytoplankton composition, succession schema, spreading, and bloom triggering and collapsing.

**Acknowledgements.** This study was funded by the DYMPAHY (Development of a DYNAMIC observation system for the assessment of MARine water quality, based on PHYtoplankton analysis) INTERREG IVA “2 Mers Seas Zeeën” European cross-border project, co-funded by the European Regional Development Fund (ERDF) and French (ULCO-CNRS-UL1), English (Cefas) and Dutch (RWS) partners. We thank the captain and crew of the RV *Cefas Endeavour*, as well as Anne-Hélène Rêve for chlorophyll *a* bench-top analysis. We also thank Rodney Forster for his invitation on board the ship during the EU FP7 PROTOOL (PROductivity

TOOLS: Automated Tools to Measure Primary Productivity in European Seas) cruise. We are also grateful to our funding sources – the CNRS and the CNES-TOSCA/PHYTOCOT project. The authors thank NASA/GSFC/DAAC for providing access to daily level-3 MODIS binned products.

Edited by: E. Boss

## References

- Aiken, J., Hardman-Mountford, N. J., Barlow, R., Fishwick, J., Hirata, T., and Smyth, T.: Functional links between bioenergetics and bio-optical traits of phytoplankton taxonomic groups: an overarching hypothesis with applications for ocean colour remote sensing, *J. Plankton Res.*, 30, 165–181, 2008.
- Alvain, S., Moulin, C., Dandonneau, Y., and Bréon, F. M.: Remote sensing of phytoplankton groups in case 1 waters from global SeaWiFS imagery, *Deep-Sea Res. Pt. I*, 52, 1989–2004, 2005.
- Alvain, S., Moulin, C., Dandonneau, Y., and Loisel, H.: Seasonal distribution and succession of dominant phytoplankton groups in the global ocean: A satellite view, *Global Biogeochem. Cy.*, 22, GB3001, doi:10.1029/2007GB003154, 2008.
- Alvain, S., Loisel, H., and Dessailly, D.: Theoretical analysis of ocean color radiances anomalies and implications for phytoplankton groups detection in case 1 waters, *Optics Express*, 20, 1070–1083, 2012.
- Alvain, S., Le Quééré, C., Bopp, L., Racault, M. F., Beaugrand, G., Dessailly, D., and Buitenhuis, E.: Rapid climatic driven shifts of diatoms at high latitudes, *Remote Sens. Environ.*, 132, 195–201, 2013.
- Ben Mustapha, Z., Alvain, S., Jamet, C., Loisel, H., and Dessailly, D.: Automatic classification of water leaving radiance anomalies from global SeaWiFS imagery: Application to the detection of phytoplankton groups in open ocean waters, *Remote Sens. Environ.*, 146, 97–112, doi:10.1016/j.rse.2013.08.046, RSE-08794, 2014.
- Boyce, D. G., Lewis, M. R., and Worm, B.: Global phytoplankton decline over the past century, *Nature*, 466, 591–596, 2010.



- Buma, A. G. J., Gieskes, W. W. C., and Thomsen, H. A.: Abundance of cryptophyceae and chlorophyll b-containing organisms in the Weddell-Scotia Confluence area in the spring of 1988, *Polar Biol.*, 12, 43–52, 1992.
- Burkill, P. H., Archer, S. D., Robinson, C., Nightingale, P. D., Groom, S. B., Tarran, G. A., and Zubkov, M. V.: Dimethyl sulphide biogeochemistry within a coccolithophore bloom (DISCO): an overview, *Deep-Sea Res. Pt. II*, 49, 2863–2885, 2002.
- Chase, A., Boss, E., Zaneveld, R., Bricaud, A., Claustre, H., Ras, J., Dall'Olmo, G., and T. K. Westberry: Decomposition of in situ particulate absorption spectra, *Methods in Oceanography*, 7, 110–124, 2013.
- Chisholm, S. W., Olson, R. J., and Yentsch, C. M.: Flow cytometry in oceanography: Status and prospects, *Eos, Transactions American Geophysical Union*, 69, 562–572, 1988.
- Ciotti, A. and Bricaud, A.: Retrievals of a size parameter for phytoplankton and spectral light absorption by Colored Detrital Matter from water-leaving radiances at SeaWiFS channels in a continental shelf region off Brazil, *Limnol. Oceanogr.-Meth.*, 4, 237–253, 2006.
- Claustre, H., Hooker, S. B., Van Heukelem, L., Berthon, J.-F., Barlow, R., Ras, J., Sessions, H., Targa, C., Thomas, C. S., van der Linde, D., and Marty, J.-C.: An intercomparison of HPLC phytoplankton pigment methods using in situ samples: application to remote sensing and database activities, *Mar. Chem.*, 85, 41–61, 2004.
- Colin, P. I., Le Quéré, C., Buitenhuis, E., House, J., Klaas C., and Knorr, W.: Biosphere dynamics: challenges for Earth system models, *The State of the Planet: Frontiers and Challenges*, edited by: Hawkesworth, C. J. and Sparks, R. S. J., American Geophysical Union, 269–278, 2004.
- de Boyer Montégut, C., Madec, G., Fischer, A. S., Lazar, A., and Iudicone, D.: Mixed layer depth over the global ocean: An examination of profile data and a profile-based climatology, *J. Geophys. Res.-Oceans*, 109, C12003, doi:10.1029/2004JC002378, 2004.
- Demarcq, H., Reygondeau, G., Alvain, S., and Vantrepotte, V.: Monitoring marine phytoplankton seasonality from space, *Remote Sens. Environ.*, 117, 211–222, 2011.
- Dodge, J. D.: The early summer bloom of dinoflagellates in the North Sea, with special reference to 1971, *Mar. Biol.*, 40, 327–336, 1977.
- D'Ovidio, F., De Monte, S., Alvain, S., Dandonneau, Y., and Levy, M.: Fluides dynamical niches of phytoplankton types, *P. Natl. Acad. Sci.*, 43, 18366–18370, doi:10.1073/pnas.1004620107, 2010.
- Dubelaar, B. J., Gerritzen, P., Beeker, A. E. R., Jonker, R., and Tangen, K.: Design and first results of Cytobuoy: a wireless flow cytometer for in situ analysis of marine and fresh waters, *Cytometry*, 37, 247–254, 1999.
- Dugenne, M., Thyssen, M., Nerini, D., Mante, C., Poggiale, J.-C., Garcia, N., Garcia, F., and Gregori, G. J.: Consequence of a sudden wind event on the dynamics of a coastal phytoplankton community: an insight into specific population growth rates using a single cell high frequency approach, *Front. Microbiol.*, 5, 485, doi:10.3389/fmicb.2014.00485, 2014.
- Everitt, B. S. and Hothorn, T.: *A Handbook of Statistical Analyses Using R*, Chapman & Hall, pp. 276, 2006.
- Field, C. B., Behrenfeld, M. J., Randerson, J. T., and Falkowski, P. G.: Primary production of the biosphere: integrating terrestrial and oceanic components, *Science*, 281, 237–240, 1998.
- Foladori, P., Quaranta, A., and Ziglio, G.: Use of silica microspheres having refractive index similar to bacteria for conversion of flow cytometric forward light scatter into biovolume, *Water Res.*, 42, 3757–3766, 2008.
- Gailhard, I., Gros, P., Durbec, J. P., Beliaeff, B., Belin, C., Nézan, E., and Lassus, P.: Variability patterns of microphytoplankton communities along the French coasts, *Mar. Ecol.-Prog. Ser.*, 242, 39–50, 2002.
- Gomez, F. and Souissi, S.: Unusual diatoms linked to climatic events in the northeastern English Channel, *J. Sea Res.*, 58, 283–290, 2007.
- Guiselin, N.: Etude de la dynamique des communautés phytoplanctoniques par microscopie et cytométrie en flux, en eaux côtières de la Manche orientale, ULCO-MREN, Doctorate (Ph.D.) Thesis in Biological Oceanology, University of Littoral Côte d'Opale (ULCO), 190 pp., 2010.
- Hirata, T., Hardman-Mountford, N. J., Brewin, R. J. W., Aiken, J., Barlow, R., Suzuki, K., Isada, T., Howell, E., Hashioka, T., Noguchi-Aita, M., and Yamanaka, Y.: Synoptic relationships between surface Chlorophyll-*a* and diagnostic pigments specific to phytoplankton functional types, *Biogeosciences*, 8, 311–327, doi:10.5194/bg-8-311-2011, 2011.
- Holligan, P. M., Aarup, T., and Groom, S. B.: The North Sea: Satellite colour atlas, *Cont. Shelf Res.*, 9, 667–765, 1989.
- Houghton, S. D.: Coccolith sedimentation and transport in the North Sea, *Mar. Geol.*, 99, 267–274, 1991.
- Kaufman, L. and Rousseeuw, P. J.: *Finding Groups in Data: An Introduction to Cluster Analysis*, Wiley Series in Probability and statistics, doi:10.1002/9780470316801, 1990.
- Kostadinov, T. S., Siegel, D. A., and Maritorena, S.: Retrieval of the particle size distribution from satellite ocean color observations, *J. Geophys. Res.*, 114, C09015, doi:10.1029/2009JC005303, 2009.
- Kruskopf, M. and Flynn, K. J.: Chlorophyll content and fluorescence responses cannot be used to gauge phytoplankton biomass, nutrient status or growth rate, *New Phytol.*, 169, 525–536, 2006.
- Le Quéré, C. L., Harrison, S. P., Colin Prentice, I., Buitenhuis, E. T., Aumont, O., Bopp, L., Claustre, H., Cotrim Da Cunha, L., Geider, R., Giraud, X., Klaas, C., Kohfeld, K. E., Legendre, L., Manizza, M., Platt, T., Rivkin, R. B., Sathyendranath, S., Uitz, J., Watson A. J., and Wolf-Gladrow, D.: Ecosystem dynamics based on plankton functional types for global ocean biogeochemistry models, *Glob. Change Biol.*, 11, 2016–2040, 2005.
- Leterme, S. C., Seuront, L., and Edwards, M.: Differential contribution of diatoms and dinoflagellates to phytoplankton biomass in the NE Atlantic Ocean and the North Sea, *Mar. Ecol.-Prog. Ser.*, 312, 57–65, 2006.
- Leterme, S. C., Pingree, R. D., Skogen, M. D., Seuront, L., Reid P. C., and Attrill, M. J.: Decadal fluctuations in North Atlantic water inflow in the North Sea between 1958–2003: impact on temperature and phytoplankton populations, *Oceanologia*, 50, 59–72, 2008.
- Li, W. K. W.: Primary production of prochlorophytes, cyanobacteria and eukaryotic ultraphytoplankton: Measurements from flow cytometric sorting, *Limnol. Oceanogr.*, 39, 169–175, 1994.

- Lomas, M. W., Roberts, N., Lipschultz, F., Krause, J. W., Nelson, D. M., and Bates, N. R.: Biogeochemical responses to late-winter storms in the Sargasso Sea. IV. Rapid succession of major phytoplankton groups. *Deep-Sea Res. Pt. I*, 56, 892–909, 2009.
- Lorenzen, C. J. A.: method for the continuous measurement of in vivo chlorophyll concentration, *Deep-Sea Res. Pt. I*, 13, 223–227, 1966.
- Marinov, I., Doney, S. C., and Lima, I. D.: Response of ocean phytoplankton community structure to climate change over the 21st century: partitioning the effects of nutrients, temperature and light, *Biogeosciences*, 7, 3941–3959, doi:10.5194/bg-7-3941-2010, 2010.
- Masotti, I., Moulin, C., Alvain, S., Bopp, L., Tagliabue, A., and Antoine, D.: Large-scale shifts in phytoplankton groups in the Equatorial Pacific during ENSO cycles, *Biogeosciences*, 8, 539–550, doi:10.5194/bg-8-539-2011, 2011.
- Mendes, C. R. B., Tavano, V. M., Leal, M. C., Souza, M. S., Brotas, V., and Garcia, C. A. E.: Shifts in the dominance between diatoms and cryptophytes during three late summers in the Bransfield Strait (Antarctic Peninsula), *Polar Biol.*, 36, 537–547, 2013.
- Moisan, T. A. H., Sathyendranath, S., and Bouman, H. A.: *Ocean Color Remote Sensing of Phytoplankton Functional Types*, ISBN: 978-953-51-0313-4, InTech, 2012.
- Moline, M. A., Claustre, H., Frazer, T. K., Schofield, O., and Vernet, M.: Alteration of the food web along the Antarctic Peninsula in response to a regional warming trend, *Glob. Change Biol.*, 10, 1973–1980, 2014.
- Navarro, G., Alvain, S., Vantrepotte, V., and Huertas, I. E.: Identification of dominant phytoplankton functional types in the Mediterranean Sea based on a regionalized remote sensing approach, *Remote Sens. Environ.*, 152, 557–575, 2014.
- Nair, A., Sathyendranath, S., Platt, T., Morales, J., Stuart, V., Forget, N., Devred, E., and Bouman, H.: Remote sensing of phytoplankton functional types, *Remote Sens. Environ.*, 112, 3366–3375, 2008.
- Nielsen, T. G., Lokkegaard, B., Richardson, K., Pedersen, F., and Hansen, L.: Structure of plankton communities in the Dogger Bank area (North Sea) during a stratified situation, *Mar. Ecol.-Prog. Ser.*, 95, 115–131, 1993.
- Olson, R. J., Shalapyonok, A., and Sosik, H. M.: An automated flow cytometer for analyzing pico- and nanophytoplankton = FlowCytobot, *Deep-Sea Res. Pt. I*, 50, 301–315, 2003.
- Racault, M. F., Le Quéré, C., Buitenhuis, E., Sathyendranath, S., and Platt, T.: Phytoplankton phenology in the global ocean, *Ecological Indicators*, 14, 152–163, 2013.
- Ribalet, F., Marchetti, A., Hubbard, K. A., Brown, K., Durkin, C. A., Morales, R., Robert, M., Swallow, J. E., Tortell, P. D., and Armbrust, E. V.: Unveiling a phytoplankton hotspot at a narrow boundary between coastal and offshore waters, *P. Natl. Acad. Sci.*, 107, 16571–16576, 2010.
- Rousseau, V., Chrétiennot-Dinet, M.-J., Jacobsen, A., Verity, P., and Whipple, S.: The life cycle of *Phaeocystis*: state of knowledge and presumptive role in ecology, *Biogeochemistry*, 83, 29–47, 2007.
- Rutten, T. P. A., Sandee, B., and Hofman, A. R. T.: Phytoplankton monitoring by high performance flow cytometry: A successful approach?, *Cytom. Part A*, 64A, 16–26, 2005.
- Sathyendranath, S., Louisa, W., Emmanuel, D., Trevor, P., Carla, C., and Heidi, M.: Discrimination of diatoms from other phytoplankton using ocean-colour data, *Mar. Ecol.-Prog. Ser.*, 272, 59–68, 2004.
- Sharples, J., Moore, C. M., Hickman, A. E., Holligan, P. M., Tweddle, J. F., Palmer, M. R., and Simpson, J. H.: Internal tidal mixing as a control on continental margin ecosystems, *Geophys. Res. Lett.*, 36, L23603, doi:10.1029/2009GL040683, 2009.
- Sosik, H. M., Olson, R. J., Neubert, M. G., and Shalapyonok, A.: Growth rates of coastal phytoplankton from time-series measurements with a submersible flow cytometer, *Limnol. Oceanogr.*, 48, 1756–1765, 2003.
- Thyssen, M., Tarran, G. A., Zubkov, M. V., Holland, R. J., Gregori, G., Burkill, P. H., and Denis, M.: The emergence of automated high-frequency flow cytometry: revealing temporal and spatial phytoplankton variability, *J. Plankton Res.*, 30, 333–343, 2008a.
- Thyssen, M., Mathieu, D., Garcia, N., and Denis, M.: Short-term variation of phytoplankton assemblages in Mediterranean coastal waters recorded with an automated submerged flow cytometer, *J. Plankton Res.*, 30, 1027–1040, 2008b.
- Thyssen, M., Garcia, N., and Denis, M.: Sub meso scale phytoplankton distribution in the North East Atlantic surface waters determined with an automated flow cytometer, *Biogeosciences*, 6, 569–583, doi:10.5194/bg-6-569-2009, 2009.
- Uitz, J., Claustre, H., Gentili, B., and Stramski, D.: Phytoplankton class-specific primary production in the world's oceans: Seasonal and interannual variability from satellite observations, *Global Biogeochem. Cy.*, 24, GB3016, doi:10.1029/2009GB003680, 2010.
- Van Bleijswijk, J. D. L., Kempers, R. S., Veldhuis, M. J., and Westbroek, P.: Cell and growth characteristics of types A and B of *Emiliania huxleyi* (Prymnesiophyceae) as determined by flow cytometry and chemical analyses, *J. Phycol.*, 30, 230–241, 1994.
- Van Heukelem, L. and Thomas, C. S.: Computer assisted high performance liquid chromatography method development with applications to the isolation and analysis of phytoplankton pigments, *J. Chromatogr.*, 910, 31–49, 2001.
- Vantrepotte, V., Loisel, H., Dessailly, D., and Mariaux X.: Optical classification of contrasted coastal waters, *Remote Sens. Environ.*, 123, 306–323, 2012.
- Vargas, M., Brown, C. W., and Sapiano, M. R. P.: Phenology of marine phytoplankton from satellite ocean color measurements, *Geophys. Res. Lett.*, 36, doi:10.1029/2008GL036006, 2009.
- Veldhuis, M. J. W. and Kraay, G. W.: Application of flow cytometry in marine phytoplankton research: current applications and future perspectives, *Scientia Marina*, 64, 121–134, 2000.
- Waterbury, J. B., Watson, S. W., Guillard, R. R. L., and Brand, L. E.: Widespread occurrence of a unicellular, marine, planktonic cyanobacterium, *Nature*, 277, 293–294, 1979.
- Werdell, P. J., Proctor, C. W., Boss, E., Leeuw, T., and Ouhssain, M.: Underway sampling of marine inherent optical properties on the Tara Oceans expedition as a novel resource for ocean color satellite data product validation, *Meth. Oceanogr.*, 7, 40–51, 2013.
- Widdicombe, C. E., Eloire, D., Harbour, D., Harris, R. P., and Somerfield, P. J.: Long-term phytoplankton community dynamics in the Western English Channel, *J. Plankton Res.*, 32, 643–655, 2010.
- Wiltshire, K. H. and Manly, B. F. J.: The warming trend at Helgoland Roads, North Sea: phytoplankton response, *Helgoland Mar. Res.*, 58, 269–273, 2004.

- Yentsch, C. S. and Menzel, D. W.: A method for the determination of phytoplankton chlorophyll and phaeophytin by fluorescence, *Deep-Sea Res.*, 10, 221–231, 1963.
- Zubkov, M. V. and Burkill, P. H.: Syringe pumped high speed flow cytometry of oceanic phytoplankton, *Cytom. Part A*, 69A, 1010–1019, 2006.
- Zubkov, M. V. and Quartly, G. D.: Ultraplankton distribution in surface waters of the Mozambique Channel – flow cytometry and satellite imagery, *Aquat. Microb. Ecol.*, 33, 155–161, 2003.