



## Structure and specificity of the Type VI secretion system ClpV-TssC interaction in enteroaggregative *Escherichia coli*

Badreddine Douzi, Yannick R Brunet, Silvia Spinelli, Valentine Lensi, Stephanie Blangy, Anant Kumar, Laure Journet, Pierre Legrand, E. Cascales, Christian Cambillau

### ► To cite this version:

Badreddine Douzi, Yannick R Brunet, Silvia Spinelli, Valentine Lensi, Stephanie Blangy, et al.. Structure and specificity of the Type VI secretion system ClpV-TssC interaction in enteroaggregative *Escherichia coli*. Scientific Reports, 2016, 6 (1), 10.1038/srep34405 . hal-01780690

**HAL Id: hal-01780690**

**<https://amu.hal.science/hal-01780690>**

Submitted on 27 Apr 2018

**HAL** is a multi-disciplinary open access archive for the deposit and dissemination of scientific research documents, whether they are published or not. The documents may come from teaching and research institutions in France or abroad, or from public or private research centers.

L'archive ouverte pluridisciplinaire **HAL**, est destinée au dépôt et à la diffusion de documents scientifiques de niveau recherche, publiés ou non, émanant des établissements d'enseignement et de recherche français ou étrangers, des laboratoires publics ou privés.

**Structure and specificity of the Type VI secretion system ClpV-TssC interaction in  
enteroaggregative *Escherichia coli*.**

Badreddine Douzi<sup>1,2</sup>, Yannick R. Brunet<sup>3,†</sup>, Silvia Spinelli<sup>1,2</sup>, Valentine Lensi<sup>3</sup>, Pierre  
Legrand<sup>4</sup>, Stéphanie Blangy<sup>1,2</sup>, Anant Kumar<sup>3</sup>, Laure Journet<sup>3</sup>, Eric Cascales<sup>3,\*</sup> and Christian  
Cambillau<sup>1,2\*</sup>

<sup>1</sup> Architecture et Fonction des Macromolécules Biologiques (AFMB, UMR 6098), Centre  
National de la Recherche Scientifique (CNRS), Campus de Luminy, Case 932, 13288  
Marseille Cedex 09, France.

<sup>2</sup> Architecture et Fonction des Macromolécules Biologiques (AFMB, UMR 6098), Aix-  
Marseille Université, Campus de Luminy, Case 932, 13288 Marseille Cedex 09, France.

<sup>3</sup> Laboratoire d'Ingénierie des Systèmes Macromoléculaires (LISM, UMR 7255), Institut de  
Microbiologie de la Méditerranée (IMM), Centre National de la Recherche Scientifique  
(CNRS), Aix-Marseille Université, 31 chemin Joseph Aiguier, 13402 Marseille Cedex 20,  
France

<sup>4</sup> Synchrotron Soleil, L'Orme des Merisiers, Saint-Aubin - BP 48, 91192 Gif-sur-Yvette  
Cedex, France.

<sup>†</sup> Current address: Department of Microbiology and Immunobiology, Harvard Medical  
School, 77 Avenue Louis Pasteur, Boston, MA, 02115 USA.

\* corresponding authors: [cascales@imm.cnrs.fr](mailto:cascales@imm.cnrs.fr) and [cambillau@afmb.univ-mrs.fr](mailto:cambillau@afmb.univ-mrs.fr)

**Running head:** T6SS ClpV/TssC interaction

## Abstract

The Type VI secretion system (T6SS) is a versatile machine that delivers toxins into either eukaryotic or bacterial cells. It thus represents a key player in bacterial pathogenesis and inter-bacterial competition. Schematically, the T6SS can be viewed as a contractile tail structure anchored to the cell envelope. The contraction of the tail sheath propels the inner tube loaded with effectors towards the target cell. The components of the contracted tail sheath are then recycled by the ClpV AAA<sup>+</sup> ATPase for a new cycle of tail elongation. The T6SS is widespread in Gram-negative bacteria and most of the genomes of these bacteria carry several copies of T6SS gene clusters, which might be activated in different conditions. Here, we show that the ClpV ATPases encoded within the two T6SS gene clusters of enteroaggregative *Escherichia coli* are not interchangeable and specifically participate to the activity of their cognate T6SS. Using bacterial two-hybrid, co-immunoprecipitation, *in vitro* microscale thermophoresis and deletion studies, we further show that this specificity is dictated by interaction between the ClpV N-terminal domains and the N-terminal helices of their cognate TssC proteins. We finally present the crystal structure of the ClpV1 N-terminal domain, alone or in complex with the TssC N-terminal helical peptide, highlighting the commonalities and diversities in the recruitment of ClpV to contracted sheaths.

## 1 Introduction

2 The Type VI secretion system (T6SS) is a multi-protein complex widely distributed in  
3 Gram-negative bacteria with an over-representation in Proteobacteria and Bacteroidetes that  
4 transports and delivers effector toxins into target cells<sup>1-4</sup>. The activities and molecular targets  
5 of the T6SS effectors correlate with the specific needs of the bacterium in its environmental  
6 niche. In most bacteria, the T6SS confers a competitive advantage in multi-species  
7 environments, as it delivers anti-bacterial toxins with peptidoglycan hydrolase, phospholipase  
8 or DNase activity into target bacterial cells<sup>5-8</sup>. The T6SS thus regulates bacterial populations  
9 and facilitates colonization of the environment<sup>9</sup>. In addition to its role in the bacterial  
10 warfare, a few T6SS have been shown to secrete toxins that are active in eukaryotic cells,  
11 such as proteins that interfere with the actin or tubulin assembly pathways<sup>10-13</sup>. The T6SS  
12 comprises 13 conserved and essential components named TssA to TssM<sup>14,15</sup>. These core-  
13 components are composed of two sub-complexes<sup>15-17</sup>. The first sub-complex is  
14 evolutionarily, structurally and functionally similar to the tail structures of contractile  
15 bacteriophages<sup>14,18,19</sup>. It is constituted of a ~ 600 nm-long inner tube made of Hcp hexamers  
16 stacked on each other, and wrapped into a sheath-like structure<sup>20,21</sup>. The sheath-like structure  
17 is composed of rows of heterodimers of TssB and TssC (VipA and VipB in *Vibrio cholerae*),  
18 which assemble into an extended, high-energy conformation<sup>16,18,20,22-24</sup>. The Hcp inner tube is  
19 tipped by a VgrG/PAAR complex, that serves as puncturing device for the penetration of the  
20 target cell, as well as adaptor complex for effectors<sup>25-29</sup>. The VgrG spike protein is also part  
21 of the assembly platform composed of the TssEFGK proteins<sup>30,31</sup>. This platform - or  
22 baseplate - controls the polymerization of the tube/sheath structure and probably initiates  
23 sheath contraction<sup>31,32</sup>. This platform is tightly attached to the cell envelope through multiple  
24 contacts with components of the second sub-complex, called membrane complex<sup>31,33</sup>. The  
25 membrane complex is composed of three proteins: the inner membrane TssL and TssM  
26 proteins and the TssJ outer membrane lipoprotein<sup>34-38</sup>. These three proteins are present in 10  
27 copies each and assemble a 1.7-MDa complex that crosses the cell envelope and delimits a  
28 channel for the passage of the inner tube during sheath contraction<sup>39</sup>. Once in contact with a  
29 target cell, or when the cell senses an attack by a competitor, the T6SS assemble the tubular  
30 structure and the sheath contracts, hence propelling the inner tube/spike towards the target cell  
31 and delivering toxins<sup>20,40</sup>. While the membrane complex is stable and can be reused for  
32 multiple injections<sup>39</sup>, the contracted sheath is disassembled by a dedicated AAA<sup>+</sup> ATPase of  
33 the Clp family, ClpV, and recycled for a new assembly and injection<sup>22,23,41</sup>. In most T6SS,



ClpV is recruited to the contracted sheath via interactions with the N-terminal helix of the TssC subunits that is thought to be accessible only in the contracted conformation<sup>22,23,41-43</sup>. The N-terminal helix of TssC accommodates into a cleft constituted of charged residues located at the interface of two helices, called H1 and H2, at the N-terminus of ClpV<sup>41,43</sup>. However, in a subset of T6SS, the cleft is composed of uncharged residues, and the ClpV-TssC interaction is mediated or stabilized by the TagJ accessory protein<sup>43</sup>.

Interestingly, most bacteria encode several copies of T6SS gene clusters in their genomes<sup>1-3,44</sup>. These clusters are usually responsive to different environmental cues and hence subjected to different regulatory mechanisms<sup>45</sup>. It is thought that this diversity is responsible for the activation of distinct T6SS machineries in different conditions. However, little is known on how the subunits select their cognate machineries when multiple paralogous T6SS are present in the same cell. Enteroaggregative *Escherichia coli* strain 17-2 encodes two T6SS gene clusters of the T6SS-1 and T6SS-3 sub-families<sup>44</sup>, and it has been shown that the inner tube component Hcp encoded by the T6SS-1 cluster (*sci-1*) specifically interacts with the sheath component TssB1, but not with TssB2, which is encoded by the T6SS-3 cluster (*sci-2*), demonstrating specificity during assembly of the T6SS tails<sup>21</sup>. Here, we report that specificity also applies to disassembly of the contracted sheath. We demonstrate that over-production of ClpV2 cannot compensate for the absence of ClpV1 and cannot restore functionality of the T6SS-1 (and vice versa). We further provide evidence that ClpV1 specifically interacts with the N-terminal helix of TssC1 and not with that of TssC2. We then report the crystal structure of the ClpV1 N-terminal domain alone and in complex with the TssC1 N-terminal helix. Noteworthy, the crystal structure of the complex differs significantly from what was reported for ClpV-VipB complex from *V. cholerae*<sup>41</sup>. Our results suggest an alternative mode of binding between TssC1 and ClpV1, as the cleft in ClpV1 is essentially composed of uncharged residues but does not require TagJ to efficiently bind to the TssC1 N-terminal helix.

## Experimental Procedures

**Bacterial strains and media.** The *Escherichia coli* K-12 DH5 $\alpha$ , BTH101, W3110 and BL21(DE3) pLysS strains were used for cloning procedures, bacterial two-hybrid analyses, co-immunoprecipitations and protein production, respectively. Strain W3110 pUA66-*rrnB*

(Kan<sup>R</sup>, GFP<sup>+</sup>)<sup>46</sup> was used as prey in anti-bacterial competition experiments. Cells were grown in Lysogeny broth (LB), Sci-1-inducing medium (SIM) or Dulbecco modified Eagle medium (DMEM), as specified. Plasmids were maintained by the addition of ampicillin (100 µg/mL), chloramphenicol (40 µg/mL) or kanamycin (50 µg/mL).

**Plasmid construction for *in vivo* studies.** Plasmids used in this study are listed in Supplemental Table S1. Polymerase Chain Reactions (PCR) were performed using a Biometra thermocycler using the Q5 high fidelity DNA polymerase (New England BioLabs). Custom oligonucleotides, listed in Supplemental Table S1, were synthesized by Sigma Aldrich. Enteroaggregative *E. coli* 17-2 chromosomal DNA was used as a template for all PRCs. The amplified DNA fragments correspond to the full-length ClpV1 (EC042\_4530, GI: 284924251), ClpV2 (EC042\_4577, GI: 284924293), TssC1 (EC042\_4525, GI: 284924246) and TssC2 (EC042\_4562, GI: 284924279) proteins, as well as the N-terminal domains of ClpV1 (residues 1-163) and ClpV2 (residues 1-147). Plasmids were engineered by restriction-free cloning<sup>47</sup> as previously described<sup>35</sup>. Briefly, genes of interest were amplified with oligonucleotides introducing extensions annealing to the target vector. The double-stranded product of the first PCR was then been used as oligonucleotides for a second PCR using the target vector as template. Deletion of TssC1 and TssC2 N-terminal helices as well as point mutations have been obtained by site-directed mutagenesis. All constructs have been verified by restriction analysis and DNA sequencing (Eurofins, MWG).

**Bacterial two-hybrid assay.** The adenylate cyclase-based bacterial two-hybrid technique<sup>48</sup> was used as previously published<sup>49</sup>. Briefly, compatible vectors producing proteins fused to the isolated T18 and T25 catalytic domains of the *Bordetella* adenylate cyclase were transformed into the reporter BTH101 strain and the plates were incubated at 30°C for 24 hours. Three independent colonies for each transformation were inoculated into 600 µL of LB medium supplemented with ampicillin, kanamycin and IPTG (0.5 mM). After overnight growth at 30°C, 10 µL of each culture were spotted onto LB plates supplemented with ampicillin (100 µg/mL), kanamycin (50 µg/mL), IPTG (0.5 mM) and Bromo-Chloro-Indolyl-Galactopyrannoside (40 µg/mL) and incubated for 16 hours at 30 °C. The experiments were done at least in triplicate and a representative result is shown.

**Co-immunoprecipitations.** 100 mL of W3110 cells producing the proteins of interest were grown to an absorbance at  $\lambda = 600$  nm ( $A_{600}$ ) ~ 0.4 and the expression of the cloned genes were induced with AHT (0.1 µg/mL) and L-arabinose (0.2%) for 45 min. The cells were

1 harvested, and the pellets were resuspended in 20 mM Tris-HCl pH 8.0, 100 mM NaCl, 30%  
2 sucrose, 1 mM EDTA, lysozyme 100 µg/mL, DNase 100 µg/mL, RNase 100 µg/mL  
3 supplemented with protease inhibitors (Complete, Roche) to an  $A_{600}$  of 80 and incubated on  
4 ice for 20 min. Cells were lysed by three passages at the French Press (800 psi) and lysates  
5 were clarified by centrifugation at  $20,000 \times g$  for 20 min. Supernatants were used for co-  
6 immunoprecipitation using anti-FLAG M2 affinity gel (Sigma-Aldrich). After 3 hours of  
7 incubation, the beads were washed three times with 1 mL of 20 mM Tris-HCl pH 8.0, 100  
8 mM NaCl, 15% sucrose, resuspended in 25 µL of Laemmli loading buffer, boiled for 10 min  
9 and subjected to SDS-PAGE and immunodetection analyses.

10 **Anti-bacterial competition assay.** Antibacterial competition growth assays were performed  
11 as previously described, in Sci-2-inducing<sup>40</sup> or Sci-1-inducing<sup>29</sup> conditions. The wild-type *E.*  
12 *coli* strain W3110 bearing the kanamycin-resistant GFP<sup>+</sup> pUA66-*rrnB* plasmid<sup>46</sup> was used as  
13 prey.

14 **Plasmid construction for *in vitro* studies.** The DNA sequence encoding the ClpV1 N-  
15 terminal domain (ClpV1-Nt, Gly1 to Leu163) was cloned into the pETG-20A expression  
16 vector using standard Gateway procedures to yield pETG20A-ClpV1-Nt. The resulting  
17 construction allows the production of ClpV1-Nt fused to an N-terminal Thioredoxin followed  
18 by a 6×His tag and a Tobacco Etch Virus (TEV) cleavage site. Primers used for genes  
19 amplification are shown in Supplemental Table S1.

20 **Peptide synthesis, protein purification and characterization.** *E. coli* BL21 (DE3) pLysS  
21 cells carrying the pETG20A-ClpV1-Nt plasmid were grown at 37°C in TB medium (1.2%  
22 peptone, 2.4% yeast extract, 72 mM K<sub>2</sub>HPO<sub>4</sub>, 17 mM KH<sub>2</sub>PO<sub>4</sub>, and 0.4% glycerol).  
23 Expression of *clpV1-Nt* was induced at  $A_{600}$  = 0.6 with 0.5 mM IPTG for 18 hours at 25°C.  
24 Cells were then resuspended in lysis buffer (50 mM Tris-HCl pH 8.0, 300 mM NaCl, 1 mM  
25 EDTA, 0.5 mg/mL lysozyme, 1mM phenylmethylsulfonyl fluoride), submitted to several  
26 freeze-thawing cycles and sonicated after the addition of 20 µg/mL DNase and 20 mM  
27 MgCl<sub>2</sub>. Pellet and soluble fraction were separated by centrifugation for 30 min at  $16,000 \times g$ .  
28 The soluble fraction containing ClpV1-Nt was loaded onto a 5-mL Ni<sup>2+</sup> affinity column  
29 (HisTrap™ FF) using an ÄKTA Explorer apparatus (GE healthcare) and the immobilized  
30 proteins were eluted in 50 mM Tris-HCl pH8.0, 300 mM NaCl supplemented with 250 mM  
31 imidazole. The protein solution was desalted on a HiPrep 26/10 column (Sephadex™ G-25,  
32 Amersham Biosciences), and ClpV1-Nt was obtained by cleavage using 2 mg of TEV

protease for 18 hours at 4°C and collected in the flow-through of a 5-mL Nickel column. The protein was concentrated using the centricon technology (Millipore, 10-kDa cut-off). After concentration, the soluble ClpV1-Nt protein was passed through a Sephadex 200 26/60 column pre-equilibrated with 25 mM Tris-HCl pH7.5, 100 mM NaCl, 5% Glycerol. A similar procedure was applied for the ClpV2-Nt domain but the protein was insoluble and could not be purified.

Peptides corresponding to the  $\alpha$ -helices from TssC1 and TssC2 (Fig. 3A) were synthesized by Genscript (TssC1 (residues 23-35), KKW-DSVYASLFEKINL-KK; TssC2 (residues 15-29), ATDDCLEEIINTRA). Due to its hydrophobic nature, the TssC1 N-terminal peptide was flanked by two lysines to improve its solubility and by an additional tryptophane to follow it during purification.

**Microscale thermophoresis (MST) experiments.** Microscale thermophoresis experiments were performed using a Monolith NT.115 apparatus (NanoTemper). ClpV1-Nt was labeled with the blue-fluorescent dye NT-495-NHS (NanoTemper) and the buffer was exchanged for the assay buffer (25 mM Tris-HCl pH 7.5, 200 mM NaCl, glycerol 5%, 0.05% Tween-20) using a Nap5 column (GE Healthcare). Titrations were conducted with a constant 200 nM fluorophore-labeled ClpV1-Nt against up to 500  $\mu$ M TssC N-terminal peptides in hydrophilic-coated capillaries. Each data point was measured in triplicate. Single-site fitting was performed using the NanoTemper data analysis software.

**Crystal structures determination.** ClpV1-Nt was purified to homogeneity and the protein crystallized spontaneously during gel filtration. ClpV1-Nt crystals belong to space group  $P2_12_12_1$  with cell dimensions  $a=40.9\text{\AA}$ ,  $b=58.7\text{\AA}$ ,  $c=65.6\text{\AA}$  (Supplemental Table S2). A complete data set was collected at the Soleil synchrotron (Saint-Aubin, France) at 2  $\text{\AA}$ . Data were integrated with XDS<sup>50</sup> and reduced with XSCALE<sup>50</sup> (Supplemental Table S2). The structure was solved by soaking crystals in a 0.5 M NaI and 0.5 M of CsI solution followed by data collection at 1.77- $\text{\AA}$  wavelength, allowing remote SAD phasing. The cesium/iodine positions were defined with SHELXC and SHELXD<sup>51</sup> and subsequently used for SAD phasing using PHASER<sup>52</sup>. These phases were improved by solvent flattening and histogram matching using the program PARROT<sup>53</sup>, resulting in interpretable maps from which the BUCCANEER program<sup>54</sup> was able to build an initial model. The model was completed and corrected manually with COOT<sup>55</sup> and refined with autoBUSTER<sup>56</sup> (Supplemental Table S2).

The ClpV1-Nt/ TssC1 peptide complex was obtained by mixing the purified ClpV1 N-terminal domain with the peptide at a 1:4 molecular ratio in 20 mM Tris-HCl pH8.0, 100 mM NaCl, 5% Glycerol and concentrated using the centricon technology (Millipore, kDa cut-off of 10) to 2 mg/mL. Crystals were obtained in one condition (0.2 M imidazole, malate pH 6.0, 8% w/v PEG 4000) using the STURA screen (Molecular dimensions) and diffracted at 2.5-Å resolution. The structure was solved by molecular replacement using the structure of ClpV1-Nt as starting model. The model was completed and corrected manually with COOT<sup>55</sup> and refined with autoBUSTER<sup>56</sup> (Supplemental Table S2).

*Data deposition.* The EAEC ClpV1-Nt and ClpV1-Nt/TssC1 peptide X-ray structures have been deposited in the Protein Data Bank (PDB) under accession numbers 4HH5 and 4HH6, respectively.

## Results

### ClpV1 and ClpV2 are not interchangeable.

The enteroaggregative *E. coli* Sci-1 and Sci-2 T6SS are both involved in bacterial competition<sup>29,40</sup>. However, these two T6SS are active in different laboratory conditions (minimal medium for the Sci-1 T6SS and modified Eagle medium for the Sci-2 T6SS;<sup>57,58</sup>. To test whether the two ClpV proteins, ClpV1 (EC042\_4530, GI: 284924251) and ClpV2 (EC042\_4577, GI: 284924293), respectively encoded by the *sci-1* and *sci-2* gene clusters are interchangeable, we engineered  $\Delta clpV1$  and  $\Delta clpV2$  strains and complementation vectors (pIBA-ClpV1 and pIBA-ClpV2). The different combinations were tested for their ability to confer a growth advantage in Sci-1- or Sci-2-active conditions against *E. coli* K-12. Figure 1 shows that while *clpV1* and *clpV2* trans-expression restores the growth advantage of the  $\Delta clpV1$  and  $\Delta clpV2$  mutant strains respectively, over-production of ClpV2 does not restore  $\Delta clpV1$  defects, and vice versa. From this experiment, we concluded that the ClpV1 and ClpV2 ATPase are not interchangeable and we hypothesized that this specificity could be imputable to specific contacts with partners.

### ClpV specificity is dictated by ClpV-TssC complex formation.

To identify ClpV1 partners, we performed a systematic bacterial two-hybrid analysis. ClpV1 was fused to the N- or C-terminus of the *Bordetella pertussis* Cya T25 domain and these protein fusions were tested as baits against preys comprising fusion of the T18 domain to the individual T6SS core components. Growth on reporter plates demonstrated that ClpV1 interacts with itself (Fig. 2A), in agreement with the ability of AAA<sup>+</sup> ATPases to assemble hexameric structures<sup>22,59</sup>. However, ClpV1 does not interact with ClpV2 suggesting that these two proteins cannot assemble hetero-hexamers (Fig. 2B). In addition, ClpV1 interacts with TssC1 (EC042\_4525, GI: 284924246), one of the sheath components (Fig. 2C). The ClpV1-TssC1 interaction was further confirmed by co-immunoprecipitation (Fig. 2D). The ClpV-TssC interaction has already been reported in *V. cholerae* and *P. aeruginosa* and involves contacts between the N-terminal domain of ClpV and an N-terminal helix of TssC<sup>22,41,43</sup>. Similarly, co-immunoprecipitation assays showed that ClpV1 the N-terminal domain of ClpV1 (ClpV1-Nt, residues 1-163) is sufficient to mediate the interaction with TssC1, while a deletion of the TssC1 N-terminal helix (deletion of residues 23-25, TssC1Δh) abolishes ClpV1-TssC1 complex formation (Fig. 2D, left panel). Identical results were obtained for ClpV2 and the Sci-2-encoded TssC2 protein (Fig. 2D, right panel). We then tested cross-interaction between the ClpV N-terminal domains and TssC proteins. Fig. 2D (right lanes in left and right panels) shows that each ClpV N-terminal domain interacts only with the TssC encoded within the same gene cluster. The lack of cross-interaction between the ClpV and TssC proteins from the two T6SSs was further confirmed by bacterial two-hybrid (Fig. 2E). From these results, we concluded that specificity determinants control ClpV-TssC complex formation and we hypothesized that these specificity determinants should be located within the TssC N-terminal helices. In support of this hypothesis, a sequence alignment of TssC1 and TssC2 showed that the two proteins share high level of homologies except in the N-terminal region that is, in average, less conserved (18% identity within the 55 N-terminal residues compared to 38 % identity on full-length sequences, Supplemental Figure S1).

To gain further insights onto the binding and specificity of ClpV1 towards the TssC N-terminal helices, the ClpV1 N-terminal domain was purified. In addition, peptides corresponding to TssC1 (residues 23-35) and TssC2 (residues 15-29) N-terminal helices (Fig. 3A) were synthesized. Binding of the TssC peptides to ClpV1-Nt was assayed by microscale thermophoresis that allows the quantification of molecular interactions in free solution states. Fig. 3B shows that the TssC1 peptide binds to ClpV<sub>1</sub>-Nt with a  $K_D$  of ~ 26 μM, a value that is comparable to the affinity measured between *V. cholerae* ClpV and the VipB (TssC) N-

terminal peptide ( $K_D \sim 39 \mu\text{M}$ )<sup>41</sup>. By contrast, no binding of TssC2 peptide to ClpV1-Nt was observed (Fig. 3C).

#### **Structures of the ClpV1 N-terminal domain alone and in complex with the TssC1 N-terminal peptide reveal a new mode of binding.**

To obtain molecular details on the ClpV1-TssC1 interaction, we crystallized the ClpV1-Nt domain alone and in complex with the TssC1 N-terminal helix peptide. ClpV1-Nt crystallized in the  $P2_12_12_1$  space group and diffracted to 2.0-Å resolution (Supplemental Table S2). ClpV1-Nt structure was solved using a CsI derivative and phasing was achieved with remote SAD methods, using a 1.77-Å wavelength for data collection. The amino-acid chain could be traced between residues 1 and 163. The structure comprises 10  $\alpha$ -helices (H0 to H9) (Fig. 4), with overall dimensions of a flat disc of  $50 \times 46 \times 28 \text{ Å}$ . Interestingly, helix H0 is oriented perpendicular to helix H1, delimiting a groove.

Crystals of ClpV1-Nt in complex with the TssC1 peptide were obtained. The crystals belong to space group  $P2_12_12_1$  and diffracted to 2.5-Å resolution (Supplemental Table S2). The structure of the complex was determined by molecular replacement using the uncomplexed structure (Fig. 5A-B). ClpV1-Nt is defined between residues 6 and 162 in the electron density map and its structure shows that it is not subjected to significant variation compared to the unbound ClpV1-Nt domain (root mean square deviation of 0.8 Å). The TssC1 N-terminal peptide is well defined in the electron density map between the residue Asp23 and Leu35. The peptide forms a  $\sim 2$ -turn  $\alpha$ -helix between Ser24 and Phe30 (SVYASLF), while the rest of the peptide (EKINL) is elongated (Fig. 5A-B). PISA analysis shows that the interaction between ClpV1-Nt and the TssC1 peptide covers  $622 \text{ Å}^2$  on the peptide (38% of the total surface) and  $520 \text{ Å}^2$  on the ClpV1 N-terminal domain (6.6% of the total surface) (Fig. 5C, Supplemental Table S3). The TssC1 peptide accommodates in the ClpV1-Nt groove delimited by helices H0 and H1, and the H4-H5 loop (Fig. 4A, Fig. 5A-E, Supplemental Table S3). Most residues of the peptide are involved in the interaction, with the exception of Ser24 and Ala27. The most significant interactions involve Tyr26, Leu29, Phe30, Lys32, Ile33 and Asn34, the three last residues belonging to the elongated stretch (Fig. 5D and 5E, Supplemental Table S3). The co-structure of ClpV1-Nt with the N-terminal

peptide of TssC1 therefore reveals a mode of binding distinct from previous co-structures (see Discussion)<sup>43</sup>.

#### **Mutagenesis studies confirm the ClpV1-TssC1 interface shown in the co-crystal.**

To test the physiological relevance of the ClpV1-Nt/TssC1 peptide co-structure, we engineered point mutations within the ClpV1 groove and the TssC1 N-terminal region, and tested their effects on ClpV1-TssC1 interaction and T6SS function. The Glu24-to-Lys (ClpV1<sup>EK</sup> mutant) and Arg87-to-Glu (ClpV1<sup>RE</sup> mutant) substitutions (as well as the double mutant variant, ClpV1<sup>EKRE</sup>) were introduced in ClpV1. These mutations did not interfere with ClpV1 oligomerization (Fig. 6A). The Glu31-to-Lys and Lys32-to-Glu substitutions were introduced in TssC1 (TssC1<sup>EKKE</sup> mutant). Here again, these mutations did not prevent the ability of TssC1 to oligomerize or to interact with TssB1 (Fig. 6A), two complexes previously described in EAEC<sup>60</sup>. However, all these substitutions affected partly or totally ClpV1-TssC1 complex formation (Fig. 6A). While the ClpV1 RE mutation had only a mild effect on the interaction, the ClpV1 EK and EKRE and the TssC1 EKKE mutations prevented formation of the ClpV1-TssC1 complex. The ClpV1 and TssC1 variants were then tested for their ability to support T6SS function. The two double mutants, ClpV1<sup>EKRE</sup> and TssC1<sup>EKKE</sup>, did not restore the anti-bacterial activity of  $\Delta clpV1$  (Fig. 6B) and  $\Delta tssC1$  (Fig. 6C) EAEC cells, respectively. By contrast the ClpV1 RE and EK single substitutions caused a 9- and 310-fold decrease of the function of the EAEC Sci-1 T6SS, respectively (Fig. 6B).

## **Discussion**

Bacterial genomes may encode several copies of Type VI secretion gene clusters. Although these gene clusters are usually subjected to different regulatory controls and expressed in different conditions, distinct Type VI secretion machineries may co-exist in the same bacterial cell<sup>1,2</sup>. There is therefore a need to control proper assembly of these machines and to allow recruitment of cognate subunits. Indeed, previous studies have demonstrated that specificity operates during machine assembly, more specifically for the interaction between the inner tube Hcp subunit and its cognate TssB sheath protein in enteroaggregative *E. coli*<sup>21</sup>. Here, we show that a second level of specificity exists, at the stage of sheath



1 disassembly/recycling. The EAEC 17-2 strain genome encodes two T6SS gene clusters<sup>44,58</sup>,  
2 each containing its own ClpV ATPase. These two proteins share 38/65% sequence  
3 identity/similarity (Supplemental Figure S1). Here, we show that these two proteins are not  
4 interchangeable and that ClpV2 cannot rescue the anti-bacterial defects of a  $\Delta clpV1$  strain,  
5 and vice versa. Using a combination of bacterial two-hybrid, co-immunoprecipitation and *in*  
6 *vitro* microscale thermophoresis assays, we provide evidence that specificity is dictated by  
7 binding of the TssC N-terminal helix to the ClpV N-terminal domain. The N-terminal regions  
8 of TssC1 and TssC2 (residues 1-163) are much more divergent (20/53% identity/similarity)  
9 than full-length proteins (38/65%) (Supplemental Figure S1). The crystal structure of the  
10 ClpV1 N-terminal domain in complex with the TssC1 N-terminal helix further showed that  
11 the TssC1 helix inserts into a cleft delimited by the H0 and H1 helices and the H4-H5 loop  
12 (Fig. 4A, Fig. 5, Fig. 6, Supplemental Table S3). Interestingly, binding of the TssC1 N-  
13 terminal helix to ClpV1-Nt does not cause a significant conformational change within ClpV.  
14 This situation is similar to that reported for the *V. cholerae* ClpV<sub>Vc</sub>-VipB complex (see  
15 below)<sup>41</sup>. The weak  $K_D$  value (26  $\mu$ M) is also very similar to that measured in *V. cholerae* (39  
16  $\mu$ M)<sup>41</sup>. However, the  $K_D$  values obtained *in vitro* might not represent the *in vivo* situation. *In*  
17 *vivo*, it is assumed that the ClpV ATPase is recruited to the contracted sheath<sup>15,18,22,61</sup>, and  
18 therefore hundreds of TssC N-terminal helices are available, probably resulting in avidity  
19 higher by several orders of magnitudes as compared to the affinity of isolated fragments.

20 The structure of the T6SS contracted sheath<sup>23,24,62</sup> revealed that the TssC N-terminal  
21 helices are not visible in the electron density map, probably due to their high flexibility.  
22 However, the position of the first visible TssC residue (residue 61, pointed by the red arrow in  
23 Fig. 7A) strongly suggests that the N-terminal VipB/TssC helix protrudes far out of the sheath  
24 cylinder and hence might be accessible to ClpV. This observation supports the current model  
25 in which sheath contraction extricates the TssC N-terminal helix, leading to ClpV recruitment  
26 and sheath subunits recycling<sup>18,22</sup>. However, this model assumes that the TssC N-terminal  
27 helix is buried within the extended sheath. To date, the molecular structure of the T6SS sheath  
28 under the extended conformation is not available. In a recent study, a low resolution model of  
29 the extended *V. cholerae* VipAB sheath was modeled using the low resolution EM map of the  
30 extended T4 phage tail sheath<sup>23</sup>. By superimposing the VipAB EM map to the gp18 T4 phage  
31 sheath protein, gross features of the sheath structure were obtained<sup>23</sup>. To obtain high-  
32 resolution details, we applied this approach by fitting the recently released VipAB molecular  
33 model into the extended T4 phage tail sheath. In the extended model, VipB residue 61 is also

located near the sheath surface, but packed against the cylinder surface (red arrows in Fig. 7B). We noticed an empty cavity nearby residue 61 that is large enough to accommodate the VipB N-terminal segment 1-60 (Fig. 7B). In this configuration, the TssC N-terminal helix will be buried and therefore not accessible to ClpV.

The structures of the *V. cholerae* (PDB 3ZRI)<sup>41</sup> and EAEC (this study) ClpV N-terminal domains share very close folds (Fig. 8). They display an elongated crevice at the same location, in which the TssC (VipB) helix inserts. While the overall scheme is the same, one can notice several differences. First, the position and orientation of the *V. cholerae* VipB and EAEC TssC1 N-terminal  $\alpha$ -helices within the groove are slightly different. The TssC1 peptide starts with an alpha helical structure followed by an extended segment (Fig. 8). By contrast, the VipB peptide is entirely helical and locates within ClpV<sub>vc</sub> at a position that is occupied by the TssC1 extended segment in ClpV1 (Fig. 8). This indicates, as already suggested<sup>43</sup>, that although ClpV exhibits a common fold in different T6SS, the nature and position of residues involved in TssC binding vary significantly enough to elicit variations in the mode of interaction. In addition, the ClpV1 groove that accommodates the TssC1 helix is constituted of a hydrophobic central area bordered by charged residues, Glu24 of H1 in contact with the Lys29 residue of TssC1, and Arg87 of the H4-H5 loop in contact with a main-chain carboxylic group of TssC1 (Fig. 5D and 5E). It has been proposed that ClpV proteins could be categorized in two phylogenetic groups differing in the nature of residues within the groove (charged or uncharged residues)<sup>43</sup>. It has also been suggested that ClpV proteins with charged grooves cannot bind TssC N-terminal helices and require the assistance of an accessory protein, TagJ<sup>43,63</sup>. However, although the EAEC ClpV1 protein presents a central hydrophobic groove bordered by charged residues, (i) it is able to bind directly to the TssC N-terminal helix, (ii) the ClpV1 charged residues are critical for the ClpV1-TssC1 interaction, and (ii) no TagJ homologue is encoded within the EAEC genome. These observations suggest that interaction between ClpV1 and TssC1 in EAEC represents a third mode of binding dependent on a partially charged interface but independent on TagJ. This variability in the mechanism of ClpV binding to TssC supports the notion that specific determinants regulate recruitment of ClpV to contracted sheaths in cells with distinct T6SS machines.

## References

1 1 Bingle, L. E., Bailey, C. M. & Pallen, M. J. Type VI secretion: a beginner's guide.  
2 *Curr Opin Microbiol* **11**, 3-8, doi:S1369-5274(08)00007-6 (2008).

3 2 Cascales, E. The type VI secretion toolkit. *EMBO Rep* **9**, 735-741,  
4 doi:10.1038/embor.2008.131 (2008).

5 3 Boyer, F., Fichant, G., Berthod, J., Vandenbrouck, Y. & Attree, I. Dissecting the  
6 bacterial type VI secretion system by a genome wide in silico analysis: what can be  
7 learned from available microbial genomic resources? *BMC Genomics* **10**, 104,  
8 doi:10.1186/1471-2164-10-104 (2009).

9 4 Coyne, M. J., Roelofs, K. G. & Comstock, L. E. Type VI secretion systems of human  
10 gut Bacteroidales segregate into three genetic architectures, two of which are  
11 contained on mobile genetic elements. *BMC Genomics* **17**, 58, doi:10.1186/s12864-  
12 016-2377-z (2016).

13 5 Hood, R. D. *et al.* A type VI secretion system of *Pseudomonas aeruginosa* targets a  
14 toxin to bacteria. *Cell Host Microbe* **7**, 25-37, doi:10.1016/j.chom.2009.12.007 (2010).

15 6 Russell, A. B. *et al.* Type VI secretion delivers bacteriolytic effectors to target cells.  
16 *Nature* **475**, 343-347, doi:10.1038/nature10244 (2011).

17 7 Durand, E., Cambillau, C., Cascales, E. & Journet, L. VgrG, Tae, Tle, and beyond: the  
18 versatile arsenal of Type VI secretion effectors. *Trends Microbiol* **22**, 498-507,  
19 doi:10.1016/j.tim.2014.06.004 (2014).

20 8 Alcoforado Diniz, J., Liu, Y. C. & Coulthurst, S. J. Molecular weaponry: diverse  
21 effectors delivered by the Type VI secretion system. *Cell Microbiol* **17**, 1742-1751,  
22 doi:10.1111/cmi.12532 (2015).

23 9 Sana, T. G. *et al.* *Salmonella Typhimurium* utilizes a T6SS-mediated antibacterial  
24 weapon to establish in the host gut. *Proc Natl Acad Sci U S A*.  
25 doi:10.1073/pnas.16088581132016 (2016).

26 10 Pukatzki, S., Ma, A. T., Revel, A. T., Sturtevant, D. & Mekalanos, J. J. Type VI  
27 secretion system translocates a phage tail spike-like protein into target cells where it  
28 cross-links actin. *Proc Natl Acad Sci U S A* **104**, 15508-15513,  
29 doi:10.1073/pnas.0706532104 (2007).

30 11 Pukatzki, S. *et al.* Identification of a conserved bacterial protein secretion system in  
31 *Vibrio cholerae* using the *Dictyostelium* host model system. *Proc Natl Acad Sci U S A*  
32 **103**, 1528-1533, doi:10.1073/pnas.0510322103 (2006).

1 12 Durand, E. *et al.* Crystal structure of the VgrG1 actin cross-linking domain of the  
2 Vibrio cholerae type VI secretion system. *J Biol Chem* **287**, 38190-38199,  
3 doi:10.1074/jbc.M112.390153 (2012).

4 13 Sana, T. G. *et al.* Internalization of Pseudomonas aeruginosa strain PAO1 into  
5 epithelial cells is promoted by interaction of a T6SS effector with the microtubule  
6 network. *MBio* **6**, e00712, doi:10.1128/mBio.00712-15 (2015).

7 14 Cascales, E. & Cambillau, C. Structural biology of type VI secretion systems. *Philos*  
8 *Trans R Soc Lond B Biol Sci* **367**, 1102-1111, doi:10.1098/rstb.2011.0209 (2012).

9 15 Zoued, A. *et al.* Architecture and assembly of the Type VI secretion system. *Biochim*  
10 *Biophys Acta* **1843**, 1664-1673, doi:10.1016/j.bbamcr.2014.03.018 (2014).

11 16 Basler, M. Type VI secretion system: secretion by a contractile nanomachine. *Philos*  
12 *Trans R Soc Lond B Biol Sci* **370**, doi:10.1098/rstb.2015.0021 (2015).

13 17 Cianfanelli, F. R., Monlezun, L. & Coulthurst, S. J. Aim, load, fire: the type VI  
14 secretion system, a bacterial nanoweapon. *Trends Microbiol* **24**, 51-62,  
15 doi:10.1016/j.tim.2015.10.005 (2016).

16 18 Bonemann, G., Pietrosiuk, A. & Mogk, A. Tubules and donuts: a type VI secretion  
17 story. *Mol Microbiol* **76**, 815-821, doi:10.1111/j.1365-2958.2010.07171.x (2010).

18 19 Leiman, P. G. & Shneider, M. M. Contractile tail machines of bacteriophages. *Adv*  
19 *Exp Med Biol* **726**, 93-114, doi:10.1007/978-1-4614-0980-9\_5 (2012).

20 20 Basler, M., Pilhofer, M., Henderson, G. P., Jensen, G. J. & Mekalanos, J. J. Type VI  
21 secretion requires a dynamic contractile phage tail-like structure. *Nature* **483**, 182-  
22 186, doi:10.1038/nature10846 (2012).

23 21 Brunet, Y. R., Henin, J., Celia, H. & Cascales, E. Type VI secretion and bacteriophage  
24 tail tubes share a common assembly pathway. *EMBO Rep*,  
25 doi:10.1002/embr.201337936 (2014).

26 22 Bonemann, G., Pietrosiuk, A., Diemand, A., Zentgraf, H. & Mogk, A. Remodelling of  
27 VipA/VipB tubules by ClpV-mediated threading is crucial for type VI protein  
28 secretion. *EMBO J* **28**, 315-325, doi:10.1038/emboj.2008.269 (2009).

29 23 Kube, S. *et al.* Structure of the VipA/B type VI secretion complex suggests a  
30 contraction-state-specific recycling mechanism. *Cell Rep* **8**, 20-30,  
31 doi:10.1016/j.celrep.2014.05.034 (2014).

32 24 Kudryashev, M. *et al.* Structure of the type VI secretion system contractile sheath.  
33 *Cell* **160**, 952-962, doi:10.1016/j.cell.2015.01.037 (2015).

1 25 Leiman, P. G. *et al.* Type VI secretion apparatus and phage tail-associated protein  
2 complexes share a common evolutionary origin. *Proc Natl Acad Sci U S A* **106**, 4154-  
3 4159, doi:10.1073/pnas.0813360106 (2009).

4 26 Shneider, M. M. *et al.* PAAR-repeat proteins sharpen and diversify the type VI  
5 secretion system spike. *Nature* **500**, 350-353, doi:10.1038/nature12453 (2013).

6 27 Alcoforado Diniz, J. & Coulthurst, S. J. Intraspecies competition in *Serratia*  
7 *marcescens* is mediated by Type VI-secreted Rhs effectors and a conserved effector-  
8 associated accessory protein. *J Bacteriol* **197**, 2350-2360, doi:10.1128/JB.00199-15  
9 (2015).

10 28 Unterweger, D. *et al.* Chimeric adaptor proteins translocate diverse type VI secretion  
11 system effectors in *Vibrio cholerae*. *EMBO J* **34**, 2198-2210,  
12 doi:10.15252/embj.201591163 (2015).

13 29 Flaughnatti, N. *et al.* A phospholipase A1 antibacterial Type VI secretion effector  
14 interacts directly with the C-terminal domain of the VgrG spike protein for delivery.  
15 *Mol Microbiol* **99**, 1099-1118, doi:10.1111/mmi.13292 (2016).

16 30 English, G., Byron, O., Cianfanelli, F. R., Prescott, A. R. & Coulthurst, S. J.  
17 Biochemical analysis of TssK, a core component of the bacterial Type VI secretion  
18 system, reveals distinct oligomeric states of TssK and identifies a TssK-TssFG sub-  
19 complex. *Biochem J*, doi:10.1042/BJ20131426 (2014).

20 31 Brunet, Y. R., Zoued, A., Boyer, F., Douzi, B. & Cascales, E. The type VI secretion  
21 TssEFGK-VgrG phage-like baseplate is recruited to the TssJLM membrane complex  
22 via multiple contacts and serves as assembly platform for tail tube/sheath  
23 polymerization. *PLoS Genet* **11**, e1005545, doi:10.1371/journal.pgen.1005545 (2015).

24 32 Gerc, A. J. *et al.* Visualization of the *Serratia* type VI secretion system reveals  
25 unprovoked attacks and dynamic assembly. *Cell Rep* **12**, 2131-2142,  
26 doi:10.1016/j.celrep.2015.08.053 (2015).

27 33 Zoued, A. *et al.* TssK is a trimeric cytoplasmic protein interacting with components of  
28 both phage-like and membrane anchoring complexes of the Type VI secretion system.  
29 *J Biol Chem* **288** 27031–27041, doi:10.1074/jbc.M113.499772 (2013).

30 34 Aschtgen, M. S., Bernard, C. S., De Bentzmann, S., Lloubes, R. & Cascales, E. SciN  
31 is an outer membrane lipoprotein required for type VI secretion in enteroaggregative  
32 *Escherichia coli*. *J Bacteriol* **190**, 7523-7531, doi:10.1128/JB.00945-08 (2008).

1 35 Aschtgen, M. S., Gavioli, M., Dessen, A., Lloubes, R. & Cascales, E. The SciZ protein  
2 anchors the enteroaggregative Escherichia coli Type VI secretion system to the cell  
3 wall. *Mol Microbiol*, doi:10.1111/j.1365-2958.2010.07028.x (2010).

4 36 Felisberto-Rodrigues, C. *et al.* Towards a structural comprehension of bacterial type  
5 VI secretion systems: characterization of the TssJ-TssM complex of an Escherichia  
6 coli pathovar. *PLoS Pathog* **7**, e1002386, doi:10.1371/journal.ppat.1002386 (2011).

7 37 Aschtgen, M. S., Zoued, A., Lloubes, R., Journet, L. & Cascales, E. The C-tail  
8 anchored TssL subunit, an essential protein of the enteroaggregative Escherichia coli  
9 Sci-1 Type VI secretion system, is inserted by YidC. *Microbiologyopen* **1**, 71-82,  
10 doi:10.1002/mbo3.9 (2012).

11 38 Durand, E. *et al.* Structural characterization and oligomerization of the TssL protein, a  
12 component shared by bacterial type VI and type IVb secretion systems. *J Biol Chem*  
13 **287**, 14157-14168, doi:10.1074/jbc.M111.338731 (2012).

14 39 Durand, E. *et al.* Biogenesis and structure of a type VI secretion membrane core  
15 complex. *Nature* **523**, 555-560, doi:10.1038/nature14667 (2015).

16 40 Brunet, Y. R., Espinosa, L., Harchouni, S., Mignot, T. & Cascales, E. Imaging type VI  
17 secretion-mediated bacterial killing. *Cell Rep* **3**, 36-41,  
18 doi:10.1016/j.celrep.2012.11.027 (2013).

19 41 Pietrosiuk, A. *et al.* Molecular basis for the unique role of the AAA+ chaperone ClpV  
20 in type VI protein secretion. *J Biol Chem* **286**, 30010-30021,  
21 doi:10.1074/jbc.M111.253377 (2011).

22 42 Basler, M. & Mekalanos, J. J. Type 6 secretion dynamics within and between bacterial  
23 cells. *Science* **337**, 815, doi:10.1126/science.1222901 (2012).

24 43 Forster, A. *et al.* Coevolution of the ATPase ClpV, the sheath proteins TssB and TssC,  
25 and the accessory protein TagJ/HsiE1 distinguishes type VI secretion classes. *J Biol*  
26 *Chem* **289**, 33032-33043, doi:10.1074/jbc.M114.600510 (2014).

27 44 Journet, L. & Cascales, E. The Type VI secretion system in Escherichia coli and  
28 related species. *EcoSal Plus* **7**, doi:10.1128/ecosalplus.ESP-0009-2015 (2016).

29 45 Bernard, C. S., Brunet, Y. R., Gueguen, E. & Cascales, E. Nooks and crannies in type  
30 VI secretion regulation. *J Bacteriol* **192**, 3850-3860, doi:10.1128/JB.00370-10 (2010).

31 46 Zaslaver, A. *et al.* A comprehensive library of fluorescent transcriptional reporters for  
32 Escherichia coli. *Nat Methods* **3**, 623-628, doi:10.1038/nmeth895 (2006).

- 1 47 van den Ent, F. & Lowe, J. RF cloning: a restriction-free method for inserting target  
2 genes into plasmids. *J Biochem Biophys Methods* **67**, 67-74,  
3 doi:10.1016/j.jbbm.2005.12.008 (2006).
- 4 48 Karimova, G., Pidoux, J., Ullmann, A. & Ladant, D. A bacterial two-hybrid system  
5 based on a reconstituted signal transduction pathway. *Proc Natl Acad Sci U S A* **95**,  
6 5752-5756 (1998).
- 7 49 Battesti, A. & Bouveret, E. The bacterial two-hybrid system based on adenylate  
8 cyclase reconstitution in *Escherichia coli*. *Methods* **58**, 325-334,  
9 doi:10.1016/j.ymeth.2012.07.018 (2012).
- 10 50 Kabsch, W. Xds. *Acta Crystallogr D Biol Crystallogr* **66**, 125-132,  
11 doi:S0907444909047337 (2010).
- 12 51 Schneider, T. R. & Sheldrick, G. M. Substructure solution with SHELXD. *Acta*  
13 *Crystallogr D Biol Crystallogr* **58**, 1772-1779 (2002).
- 14 52 McCoy, A. J. *et al.* Phaser crystallographic software. *J Appl Crystallogr* **40**, 658-674,  
15 doi:10.1107/S0021889807021206 (2007).
- 16 53 Cowtan, K. Recent developments in classical density modification. *Acta Crystallogr D*  
17 *Biol Crystallogr* **66**, 470-478, doi:10.1107/S090744490903947X (2010).
- 18 54 Cowtan, K. The Buccaneer software for automated model building. 1. Tracing protein  
19 chains. *Acta Crystallogr D Biol Crystallogr* **62**, 1002-1011,  
20 doi:10.1107/S0907444906022116 (2006).
- 21 55 Emsley, P. & Cowtan, K. Coot: model-building tools for molecular graphics. *Acta*  
22 *Crystallogr D Biol Crystallogr* **60**, 2126-2132 (2004).
- 23 56 Blanc, E. *et al.* Refinement of severely incomplete structures with maximum  
24 likelihood in BUSTER-TNT. *Acta Crystallogr D Biol Crystallogr* **60**, 2210-2221,  
25 doi:S0907444904016427 (2004).
- 26 57 Brunet, Y. R., Bernard, C. S., Gavioli, M., Lloubes, R. & Cascales, E. An epigenetic  
27 switch involving overlapping fur and DNA methylation optimizes expression of a type  
28 VI secretion gene cluster. *PLoS Genet* **7**, e1002205,  
29 doi:10.1371/journal.pgen.1002205 (2011).
- 30 58 Dudley, E. G., Thomson, N. R., Parkhill, J., Morin, N. P. & Nataro, J. P. Proteomic  
31 and microarray characterization of the AggR regulon identifies a pheU pathogenicity  
32 island in enteroaggregative *Escherichia coli*. *Mol Microbiol* **61**, 1267-1282 (2006).
- 33 59 Kress, W., Maglica, Z. & Weber-Ban, E. Clp chaperone-proteases: structure and  
34 function. *Res Microbiol* **160**, 618-628, doi:10.1016/j.resmic.2009.08.006 (2009).

- 60 Zhang, X.Y., Brunet, Y.R., Logger, L., Douzi, B., Cambillau, C., Journet, L. &  
61 Cascales, E. Dissection of the TssB-TssC interface during type VI secretion sheath  
62 complex formation. *PLoS One* **8**, e81074. doi: 10.1371/journal.pone.0081074 (2013).
- 63 Kapitein, N. *et al.* ClpV recycles VipA/VipB tubules and prevents non-productive  
64 tubule formation to ensure efficient type VI protein secretion. *Mol Microbiol* **87**,  
65 1013-1028, doi:10.1111/mmi.12147 (2013).
- 66 Clemens, D. L., Ge, P., Lee, B. Y., Horwitz, M. A. & Zhou, Z. H. Atomic structure of  
67 T6SS reveals interlaced array essential to function. *Cell* **160**, 940-951,  
68 doi:10.1016/j.cell.2015.02.005 (2015).
- 69 Lossi, N. S. *et al.* The archetype *Pseudomonas aeruginosa* proteins TssB and TagJ  
70 form a novel subcomplex in the bacterial type VI secretion system. *Mol Microbiol* **86**,  
71 437-456, doi:10.1111/j.1365-2958.2012.08204.x (2012).
- 72 Cole, C., Barber, J. D. & Barton, G. J. The Jpred 3 secondary structure prediction  
73 server. *Nucleic Acids Res* **36**, W197-201, doi:gkn238 (2008).
- 74 Laskowski, R. A. & Swindells, M. B. LigPlot+: multiple ligand-protein interaction  
75 diagrams for drug discovery. *J Chem Inf Model* **51**, 2778-2786,  
76 doi:10.1021/ci200227u (2011).

## Acknowledgements

We thank the members of the Cascales and Cambillau research groups for insightful discussions and the Soleil synchrotron (Saint-Aubin, France) for beamline allocation. This work was supported by the Centre Nationale de la Recherche Scientifique (CNRS), the Aix-Marseille Université (AMU), Agence Nationale de la Recherche (ANR) and Fondation pour la Recherche Médicale (FRM) research grants (ANR-10-JCJC-1303-03, ANR-14-CE14-0006-02, DEQ2011-0421282). Anant Kumar was supported by a Charpak Research Excellence scholarship from the Agence Française pour la promotion de l'enseignement supérieur, l'accueil et la mobilité internationale (Campus France).

## Authors contribution

B.D. , S.S. and S.B. purified the proteins and performed the microscale thermophoresis experiments. B.D., S.S., P.L. and C.C. solved the X-ray structures. Y.R.B., V.L. and E.C. performed the co-immunoprecipitations and anti-bacterial activity assays. A.K. and L.J.



1 performed the bacterial two-hybrid assays. E.C. and C.C. supervised the experiments. B.D.,  
2 E.C. and C.C. wrote the manuscript. Every author reviewed the manuscript prior to  
3 submission.

#### 4 **Additional information**

5 **Supplementary information** accompanies this article (Figure S1, Tables S1-S3).

6 **Competing financial interests.** The authors declare no competing financial interests.

## 1 Legend to Figures

2 **Figure 1. ClpV1-ClpV2 interchangeability.** (A) Sci-1-dependent antibacterial growth  
3 inhibition. Prey cells (W3110 *gfp*<sup>+</sup>, kan<sup>R</sup>) were mixed with the indicated attacker cells, spotted  
4 onto *sci-1*-inducing medium (SIM) agar plates and incubated for 4 hours at 37°C. (B) Sci-2-  
5 dependent antibacterial growth inhibition. Prey cells (W3110 *gfp*<sup>+</sup>, kan<sup>R</sup>) were mixed with the  
6 indicated attacker cells, spotted onto Dulbecco's modified Eagle Medium (DMEM) agar  
7 plates and incubated for 4 hours at 37°C. The image of a representative bacterial spot is  
8 shown and the relative fluorescent levels (in arbitrary units, AU) are indicated in the upper  
9 graph. The number of recovered *E. coli* prey cells is indicated in the lower graph (in log<sub>10</sub> of  
10 colony-forming units (cfu)). The circles indicate values from three independent assays, and  
11 the average is indicated by the bar.

12 **Figure 2. Interaction of the ClpV N-terminal domain with its cognate TssC protein.** (A-  
13 C and E) Bacterial two-hybrid assay. BTH101 reporter cells producing the indicated proteins  
14 or domains fused to the T18 or T25 domain of the *Bordetella* adenylate cyclase were spotted  
15 on X-Gal indicator plates. The blue color of the colony reflects the interaction between the  
16 two proteins. (D) Co-immunoprecipitation assay. The soluble lysate from 10<sup>11</sup> *E. coli* K-12  
17 W3110 cells producing the indicated proteins (FL, FLAG-tagged; v, VSVG-tagged) were  
18 subjected to immune precipitation on anti-FLAG-coupled agarose beads. The  
19 immunoprecipitated material was subjected to 12.5%-acrylamide SDS-PAGE and  
20 immunodetected with anti-FLAG (upper panel) and anti-VSVG (lower panel) monoclonal  
21 antibodies. Molecular weight markers (in kDa) are indicated.

22 **Figure 3. The TssC1 N-terminal helix specifically binds to the ClpV1 N-terminal**  
23 **domain.** (A) Sequences of the TssC1 and TssC2 N-terminal regions. The secondary structure  
24 predictions (using JPRED<sup>64</sup>) are indicated under the sequence, and the TssC1 and TssC2 N-  
25 terminal helices (corresponding to the peptides used in this study) are highlighted by the blue  
26 frames. (B-C) Microscale thermophoresis interaction of the TssC1 (B) or TssC2 (C) N-  
27 terminal helical peptide with ClpV1-Nt. The MST signal change (expressed as relative  
28 fluorescence) that reflects titration of the unlabeled TssC peptide (in nM) to a constant  
29 amount of fluorescently labeled ClpV1-Nt domain was measured. Error bars represent the  
30 results from three independent experiments.

31 **Figure 4. Crystal structure of the ClpV1 N-terminal domain.** (A) Rainbow colored

sequence of the ClpV1 N-terminal domain. The secondary structures are indicated below the sequence. The residues involved in the interaction with the TssC1 peptide (see Fig. 5) are indicated by the red arrowheads. **(B)** Stereoview of the ClpV1 N-terminal domain. The structure is represented as a rainbow colored ribbon. Helices are numbered H0-H8.

**Figure 5. Crystal structure of the ClpV1 N-terminal domain complexed to the TssC1 N-terminal helix.** **(A-B)** Ribbon view of the ClpV1-Nt/TssC1 peptide complex. The ClpV1 N-terminal domain is rainbow colored and the TssC1 peptide is shown in beige. The view in **(B)** is rotated by 90° compared to **(A)** and the uncomplexed ClpV1 N-terminal domain is superimposed and colored grey. **(C)** Surface representation of the complex. The ClpV1 N-terminal domain is rainbow colored and the TssC1 peptide is colored beige. **(D)** Surface view of the ClpV1 N-terminal domain (green) in complex with the TssC1 peptide represented as a ribbon (beige). The inset shows a close-up of the binding crevice, with the surface colored according to electrostatics (blue/red, positively/negatively charged residues; white, hydrophobic residues). **(E)** Detailed ball-and-stick scheme of the interaction. The side chains of the residues at the ClpV1-TssC1 interface of the ClpV1 N-terminal domain (blue area) are represented with brown bonds whereas that of the TssC1 peptide (grey area) are represented with violet bonds. TssC1 residues are indicated in blue whereas the side chains of ClpV1 residues involved in the interaction are indicated in green (scheme made with Ligplot+<sup>65</sup>).

**Figure 6. Charged residues within the ClpV1 groove and the TssC1 peptide mediate the ClpV1-TssC1 interaction.** **(A)** Bacterial two-hybrid assay. BTH101 reporter cells producing the indicated wild-type or mutated proteins fused to the T18 or T25 domain of the *Bordetella* adenylate cyclase were spotted on X-Gal indicator plates. The blue color of the colony reflects the interaction between the two proteins. **(B and C)** Sci-1-dependent antibacterial growth inhibition. Prey cells (W3110 *gfp*<sup>+</sup>, kan<sup>R</sup>) were mixed with the indicated attacker cells, spotted onto *sci-I*-inducing medium (SIM) agar plates and incubated for 4 hours at 37°C. The image of a representative bacterial spot is shown and the relative fluorescent levels (in arbitrary units, AU) are indicated in the upper graph. The number of recovered *E. coli* prey cells is indicated in the lower graph (in log<sub>10</sub> of colony-forming units (cfu)). The circles indicate values from three independent assays, and the average is indicated by the bar.

**Figure 7. Position of TssC N-terminal helix in the contracted and extended T6SS sheath models.** **(A)** Contracted *V. cholerae* VipAB sheath atomic structure<sup>24</sup> (right, top view; left, side view). Four sheath rows are shown (right, top view; left, side view). The red arrows

1 indicate the VipB (TssC) first visible residue. **(B)** Extended *V. cholerae* VipAB sheath  
2 molecular model. The inset shows a close-up of the VipB N-terminus and the flanking cavity  
3 (surligned in red) that could accommodate the VipB 1-60 fragment.

4 **Figure 8. Structural comparison between the EAEC and *Vibrio cholerae* ClpV N-**  
5 **terminal domains in complex with TssC/VipB peptides.** Ribbon view of the  
6 enteroaggregative *E. coli* ClpV1-Nt/TssC1 peptide (ClpV in blue, peptide in orange; PDB  
7 4HH6) superimposed to the *V. cholerae* ClpV-Nt/VipB peptide (ClpV in green, peptide in  
8 pink; PDB 3ZRJ<sup>41</sup>).

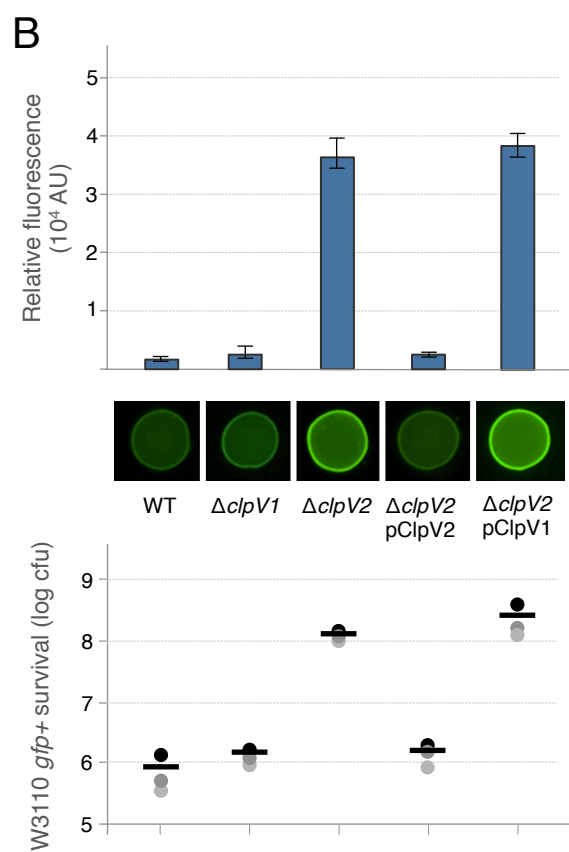
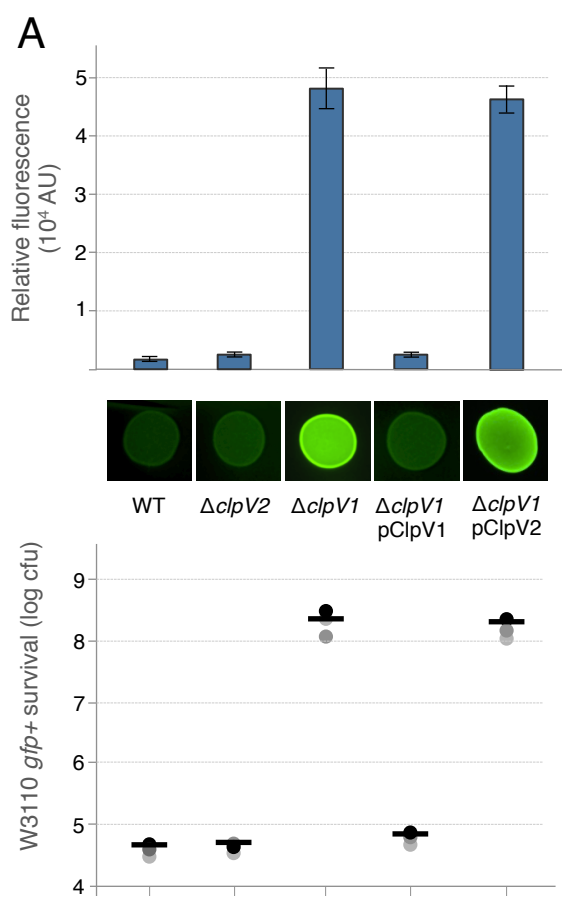
## 10 Legend to Supplementary Data

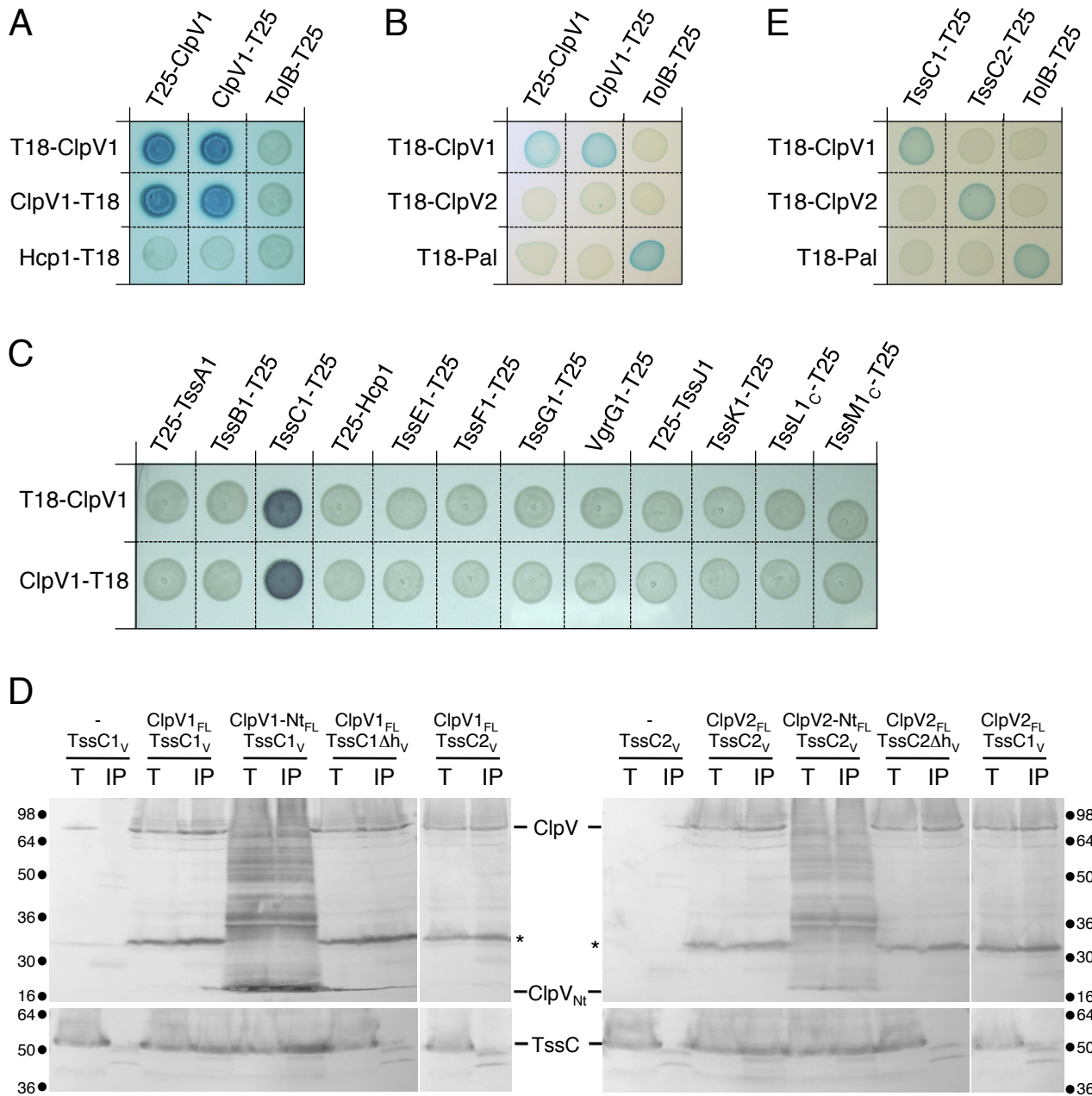
11 **Figure S1. Clustal W alignment of the ClpV1 and ClpV protein sequences.** The two full-  
12 length protein sequences were aligned using ClustalW on the Pôle Rhone-Alpes de  
13 BioInformatique (PRABI) server ([https://npsa-prabi.ibcp.fr/cgi-](https://npsa-prabi.ibcp.fr/cgi-bin/npsa_automat.pl?page=/NPSA/npsa_clustalw.html)  
14 [bin/npsa\\_automat.pl?page=/NPSA/npsa\\_clustalw.html](https://npsa-prabi.ibcp.fr/cgi-bin/npsa_automat.pl?page=/NPSA/npsa_clustalw.html)). Identical residues are shown in red  
15 and indicated by a star. Similar residues are shown in blue or green. The red arrow indicates  
16 the position of the ClpV N-terminal domain C-terminus used in all the constructs.

18 **Table S1. Strains, Plasmids and Oligonucleotides used in this study.**

19 **Table S2. Data collection and refinement statistics for the ClpV1-Nt and ClpV1-**  
20 **Nt/TssC1 peptide crystals.**

21 **Table S3. ClpV1-Nt / TssC1 contacts in the co-crystal structure.**





**A**

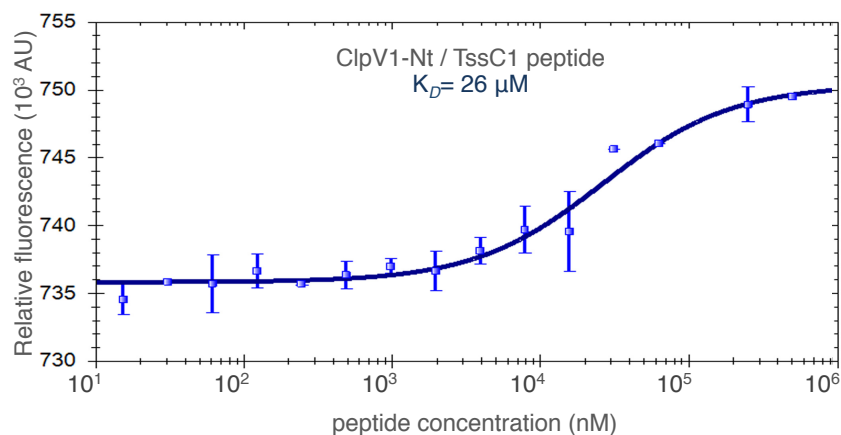
**TssC1**

MLMSVQKEKNVAESVVSEAHAGDSVYASLFEKINLSPVSALSALDIWQDPQAMSE  
 -----EEEE-----HHHHHHHHH-----HHHHH-----

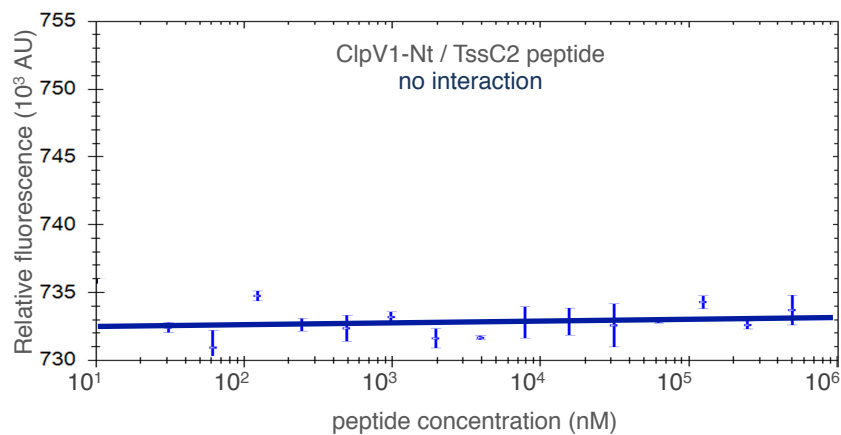
**TssC2**

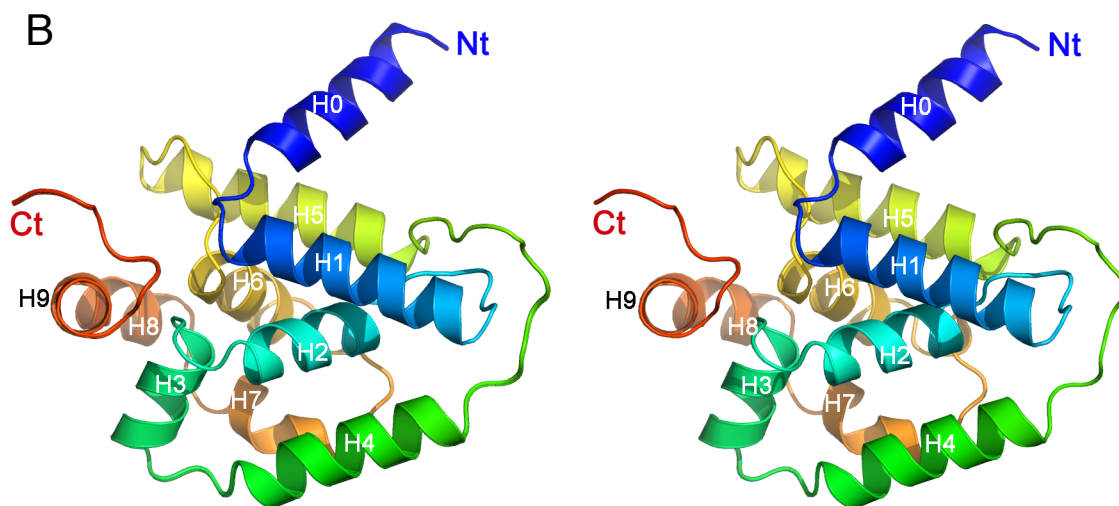
MTVASTLGLNETQYATDDCLEEIINNTRAVRQDSEKTRFKLQINNFLAEVASGSL  
 ---HHHHH-----HHHHHHHHHH-----HHHHHHHHHHHHHHHHHHHH-----

**B**

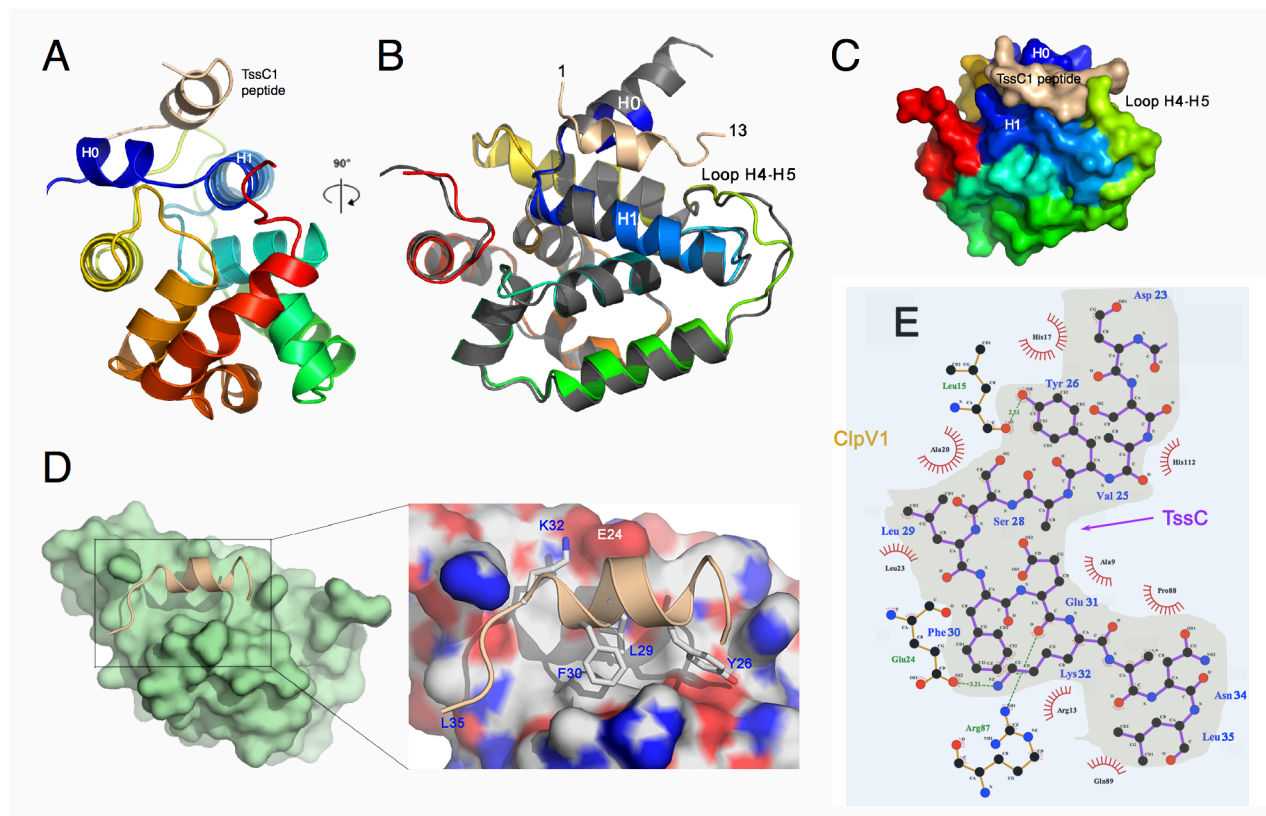


**C**

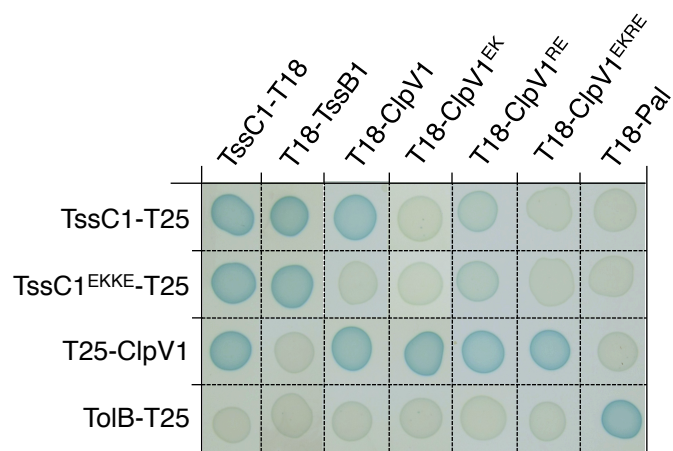




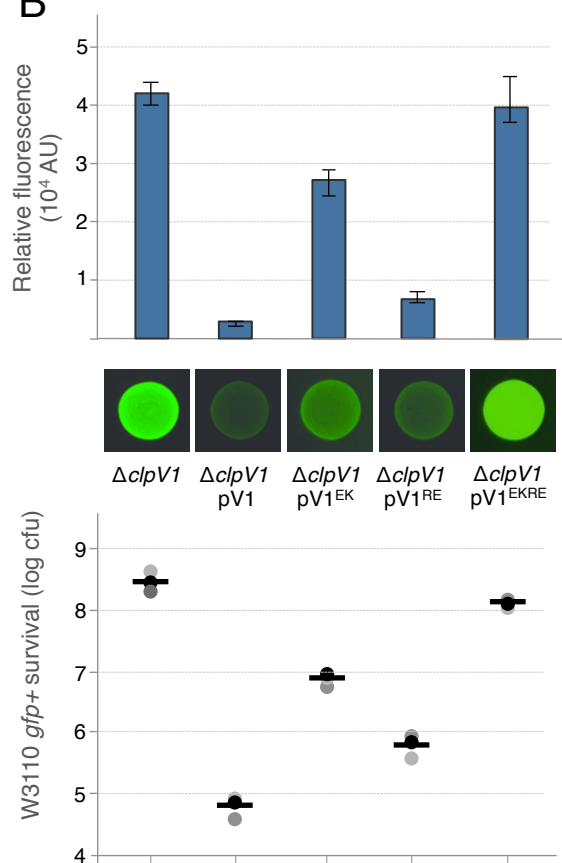




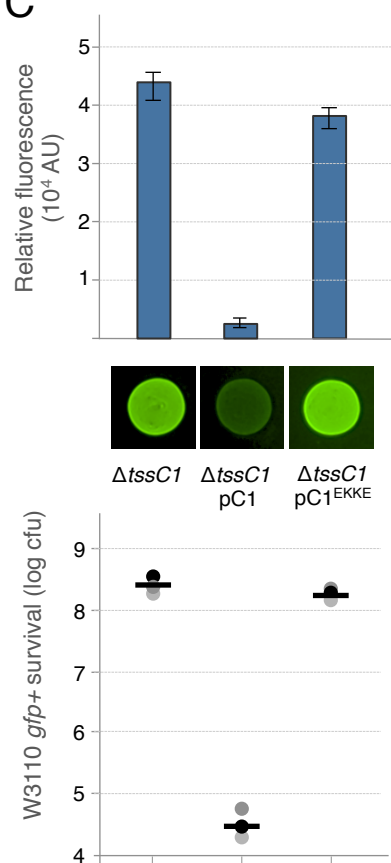
**A**

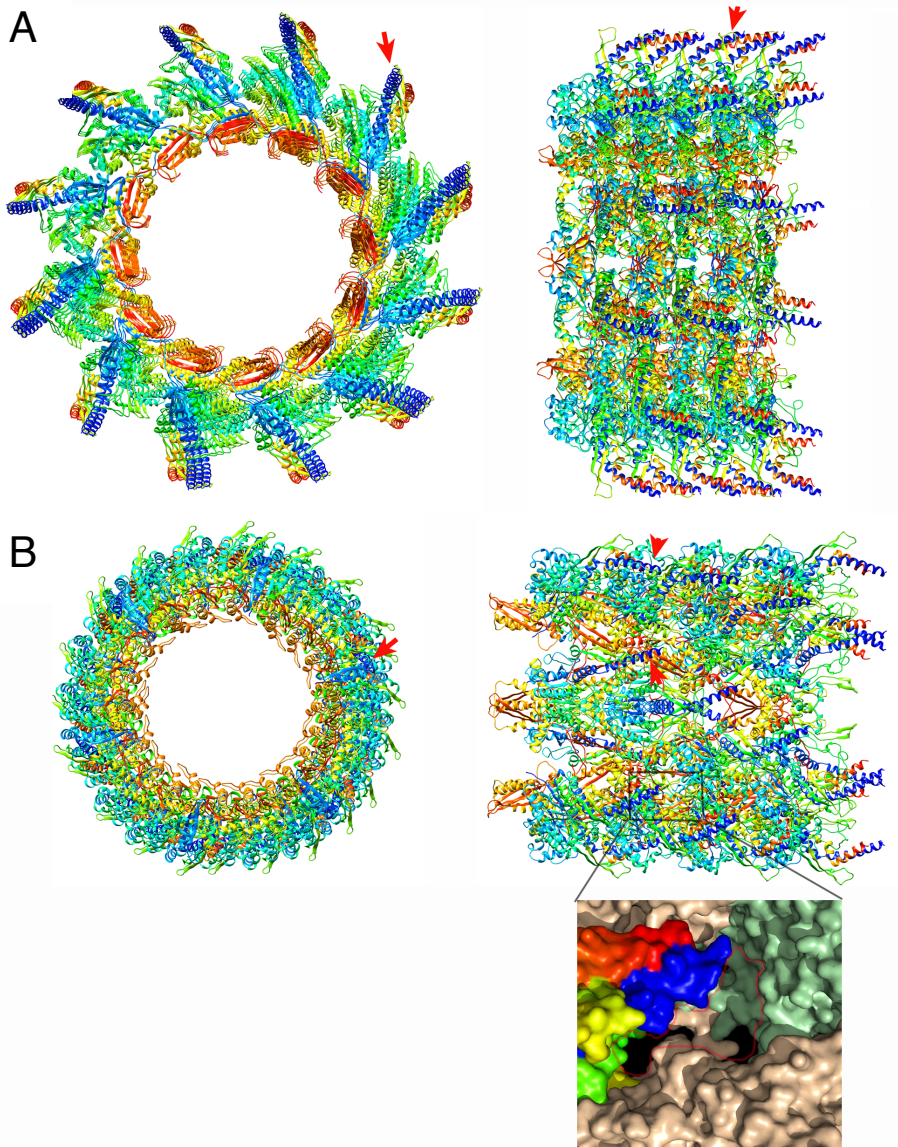


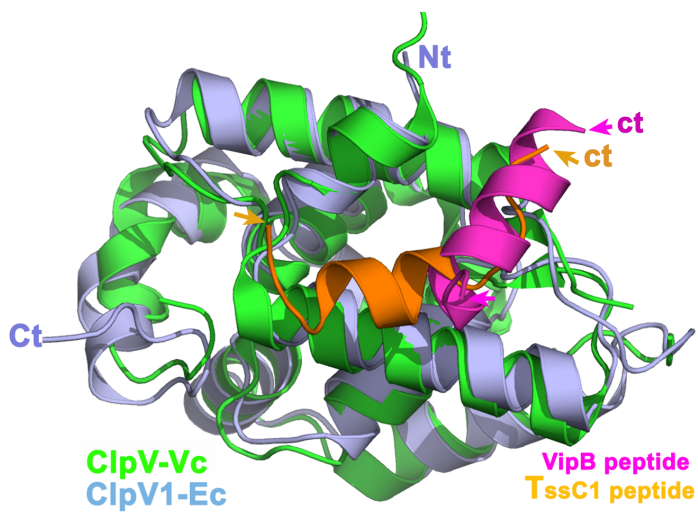
**B**



**C**





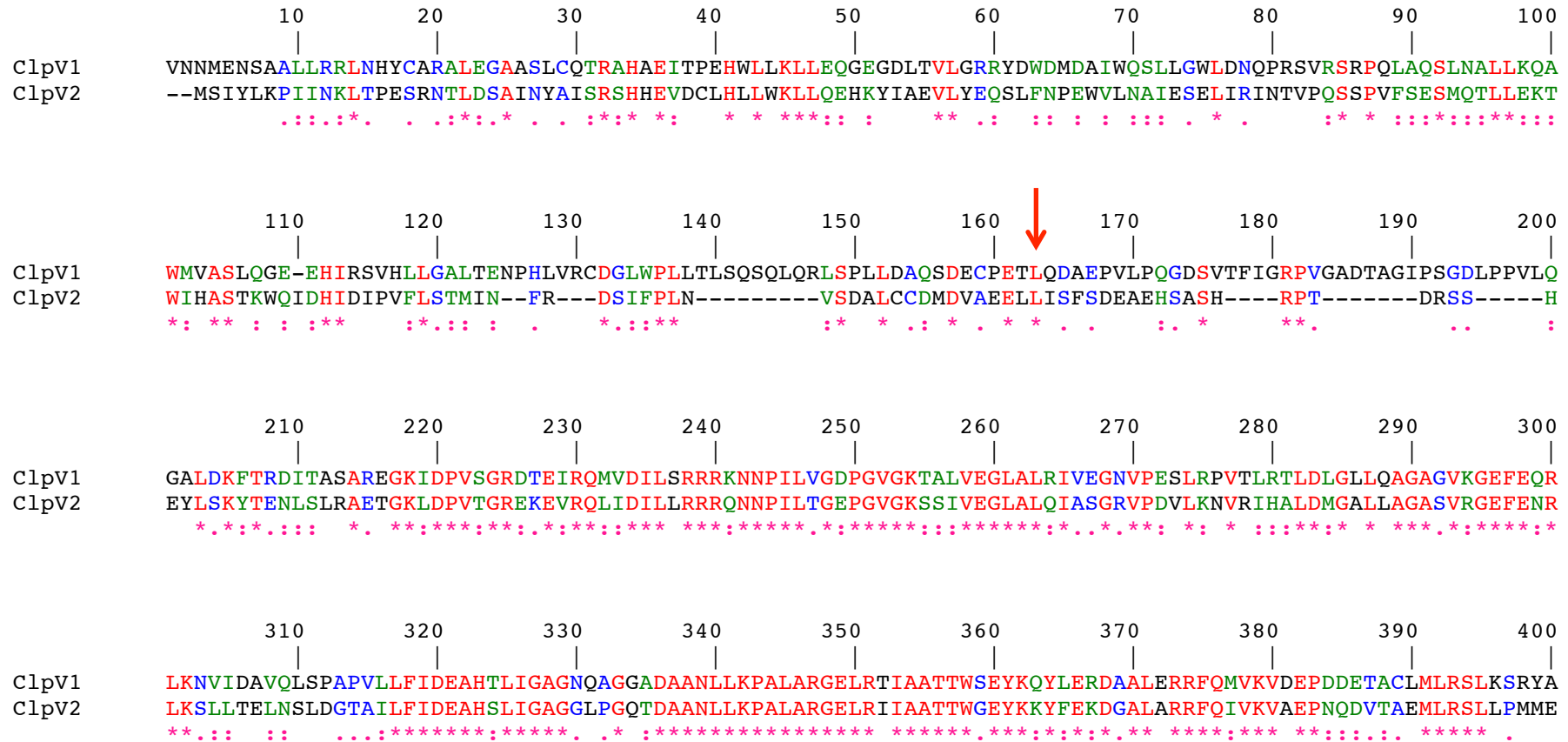


## **SUPPLEMENTAL DATA**

### **Structure and specificity of the Type VI secretion system ClpV-TssC interaction in enteroaggregative *Escherichia coli*.**

B. Douzi, Y.R. Brunet, S. Spinelli, V. Lensi, P. Legrand, S. Blangy,  
A.K. Singh, L. Journet, E. Cascales & C. Cambillau

**Supplemental Figure S1. Clustal W alignment of the EAEC ClpV1 and ClpV2 amino-acid sequences.**





**Supplemental Table S1. Strains, plasmids and oligonucleotides used in this study.**

### Strains

Strains	Description and genotype	Source
<u><i>E. coli</i> K-12</u>		
DH5 $\alpha$	F <sup>-</sup> , $\Delta$ ( <i>argF-lac</i> )U169, <i>phoA</i> , <i>supE44</i> , $\Delta$ ( <i>lacZ</i> )M15, <i>relA</i> , <i>endA</i> , <i>thi</i> , <i>hsdR</i>	New England Biolabs
W3110	F <sup>-</sup> , lambda- IN( <i>rrnD-rrnE</i> )1 <i>rph</i> -1	Laboratory collection
BTH101	F <sup>-</sup> , <i>cya-99</i> , <i>araD139</i> , <i>galE15</i> , <i>galK16</i> , <i>rpsL1</i> ( <i>Str</i> <sup>R</sup> ), <i>hsdR2</i> , <i>mcrA1</i> , <i>mcrB1</i> .	Karimova et al., 2005
BL21(DE3) pLys	F <sup>-</sup> , miniF <i>lysY lacI</i> <sup>f</sup> (Cm <sup>R</sup> ) / <i>fhuA2 lacZ::T7 gene1 [lon] ompT gal sulA11 R(mcr-73::miniTn10--Tet<sup>S</sup>)2 [dcm] R(zgb-210::Tn10--Tet<sup>S</sup>) endA1 <math>\Delta</math>(<i>mcrC-mrr</i>) 114::IS10</i>	New England Biolabs
<u>Enteroaggregative <i>E. coli</i></u>		
17-2	WT enteroaggregative <i>Escherichia coli</i>	Arlette Darfeuille-Michaud
17-2 $\Delta$ <i>clpV1</i>	17-2 deleted of the <i>clpV</i> gene of the <i>sci1</i> T6SS gene cluster (EC042_4530)	Brunet et al., 2015
17-2 $\Delta$ <i>clpV2</i>	17-2 deleted of the <i>clpV</i> gene of the <i>sci2</i> T6SS gene cluster (EC042_4577)	M.S. Aschtgen
17-2 $\Delta$ <i>tssC1</i>	17-2 deleted of the <i>tssC</i> gene of the <i>sci1</i> T6SS gene cluster (EC042_4525)	Brunet et al., 2015

### Plasmids

Vectors	Description	Source
<u>Expression vectors</u>		
pUA66-rrnB	<i>P<sub>rrnB</sub> ::gfpmut2</i> transcriptional fusion in pUA66	Zaslaver et al., 2006
pASK-IBA37	cloning vector, <i>P<sub>tet</sub></i> , Amp <sup>R</sup>	IBA Technology
pIBA37-ClpV1 <sub>FLAG</sub>	<i>sci1 clpV</i> , C-terminal FLAG tag cloned into pASK-IBA37	This study



pIBA37-ClpV1-Nt <sub>FLAG</sub>	<i>sci1 clpV</i> N-terminal fragment (residues 1-162), C-terminal FLAG tag cloned into pASK-IBA37(+)	This study
pIBA37-ClpV1-E24K <sub>FLAG</sub>	<i>clpV1</i> Glu24-to-Lys substitution into pIBA37-ClpV1 <sub>FLAG</sub>	This study
pIBA37-ClpV1-R87E <sub>FLAG</sub>	<i>clpV1</i> Arg87-to-Glu substitution into pIBA37-ClpV1 <sub>FLAG</sub>	This study
pIBA37-ClpV1-E24K-R87E <sub>FLAG</sub>	<i>clpV1</i> Glu24-to-Lys and Arg87-to-Glu substitutions into pIBA37-ClpV1 <sub>FLAG</sub>	This study
pIBA37-ClpV2 <sub>FLAG</sub>	<i>sci2 clpV</i> , C-terminal FLAG tag cloned into pASK-IBA37	This study
pIBA37-ClpV2-Nt <sub>FLAG</sub>	<i>sci2 clpV</i> N-terminal fragment (residues 1-147), C-terminal FLAG tag cloned into pASK-IBA37(+)	This study
pBAD33	cloning vector, pACYC184 origin, <i>Para</i> , <i>araC</i> Cm <sup>R</sup>	Guzman et al., 1995
pBAD33-TssC1 <sub>VSV-G</sub>	<i>sci1 tssC</i> , C-terminal VSV-G tag cloned into pBAD33	This study
pBAD33-TssC1-E31K-K32E <sub>VSV-G</sub>	<i>tssC1</i> Glu31-to-Lys and Lys32-to-Glu substitutions into pBAD33-TssC1 <sub>VSV-G</sub>	This study
pBAD33-TssC1Δh <sub>VSV-G</sub>	Deletion of amino-acids 23-35 of <i>sci1 tssC</i> into pBAD33-TssC1 <sub>VSV-G</sub>	This study
pBAD33-TssC2 <sub>VSV-G</sub>	<i>sci2 tssC</i> , C-terminal VSV-G tag cloned into pBAD33	This study
pBAD33-TssC2Δh <sub>VSV-G</sub>	Deletion of amino-acids 2-15 of <i>sci2 tssC</i> into pBAD33-TssC2 <sub>VSV-G</sub>	This study

#### Bacterial Two-Hybrid vectors

pT18-FLAG	Bacterial Two Hybrid vector, ColE1 origin, <i>Plac</i> , T18 fragment of <i>Bordetella pertussis</i> CyaA, Amp <sup>R</sup>	Battesti & Bouveret, 2008
pT18-Pal	Soluble region of <i>E. coli</i> K-12 Pal cloned downstream T18 in pT18-FLAG	Battesti & Bouveret, 2008
pClpV1-T18	<i>sci1 clpV</i> cloned upstream T18 into pT18-FLAG	This study
pT18-ClpV1	<i>sci1 clpV</i> cloned downstream T18 into pT18-FLAG	This study
pT18-ClpV1-E24K	<i>clpV1</i> Glu24-to-Lys substitution into pT18-ClpV1	This study
pT18-ClpV1-R87E	<i>clpV1</i> Arg87-to-Glu substitution into pT18-ClpV1	This study
pT18-ClpV1-E24K-R87E	<i>clpV1</i> Glu24-to-Lys and Arg87-to-Glu substitutions into pT18-ClpV1	This study
pT18-ClpV2	<i>sci2 clpV</i> cloned downstream T18 into pT18-FLAG	This study
pT25-FLAG	Bacterial Two Hybrid vector, p15A origin, <i>Plac</i> , T25 fragment of <i>Bordetella pertussis</i> CyaA, Kan <sup>R</sup>	Battesti & Bouveret, 2008
pTolB-T25	<i>E. coli</i> K-12 <i>tolB</i> cloned upstream T25 in pT25-FLAG	Battesti & Bouveret, 2008
pClpV1-T25	<i>sci1 clpV</i> cloned upstream T25 into pT25-FLAG	This study
pT25-ClpV1	<i>sci1 clpV</i> cloned downstream T25 into pT25-FLAG	This study
pTssC1-T25	<i>sci1 tssC</i> cloned upstream T25 into pT25-FLAG	Zoued et al., 2013
pTssC1-E31K-K32E-T25	<i>tssC1</i> Glu31-to-Lys and Lys32-to-Glu substitutions into pTssC1-T25	This study
pTssC2-T25	<i>sci2 tssC</i> (EC042_4564) cloned upstream T25 into pT25-FLAG	This study

All others BACTH constructs have been described in Zoued et al., 2013.

## Oligonucleotides

Name	Destination	Sequence (5' to 3')
For plasmid construction <sup>a,b,c</sup>		
5-pIBA37-ClpV1 <sub>FLAG</sub>	pIBA-ClpV1 <sub>FLAG</sub> / pIBA-ClpV1-Nt	<u>GACAAAAATCTAGAAATAATTTTGTTTAACTTTAAGAAGGAGATATACAAATGAATAACA</u> <u>TGGAAAATTCGGCAGCCCTGTTACG</u>
3-pIBA37-ClpV1 <sub>FLAG</sub>	pIBA-ClpV1 <sub>FLAG</sub>	<u>GATGGTGATGGTGATGCGATCCTCTGCTAGCTTATTTATCATCGTCGTCCTTTATAATCTAACGC</u> <u>GCATTCCTGCCGCAGCTC</u>
3- pIBA37-ClpV1-Nter	pIBA-ClpV1-Nt	<u>GATGGTGATGGTGATGCGATCCTCTGCTAGCTTATTTATCATCGTCGTCCTTTATAATCTAACGT</u> <u>CTCCGGACACTCATCAGACTG</u>
5-pIBA37-ClpV2 <sub>FLAG</sub>	pIBA-ClpV2 <sub>FLAG</sub> / pIBA-ClpV2-Nt	<u>GACAAAAATCTAGAAATAATTTTGTTTAACTTTAAGAAGGAGATATACAAATGGTGAGTA</u> <u>TCTATCTGAAACCAATTATTAATAAATTAACCTCCAGAAAG</u>
3- pIBA37-ClpV2 <sub>FLAG</sub>	pIBA-ClpV2	<u>GATGGTGATGGTGATGCGATCCTCTGCTAGCTTATTTATCATCGTCGTCCTTTATAATCATTACG</u> <u>AGTTGCAAATTGCGAACTACGTAATGTAATG</u>
3-pIBA37-ClpV2-Nter	pIBA-ClpV2-Nt	<u>GATGGTGATGGTGATGCGATCCTCTGCTAGCTTATTTATCATCGTCGTCCTTTATAATCAAGTA</u> <u>ACTCCTCAGCTACATCCATATCACAACAT</u>
5-pBAD33-TssC1 <sub>VSV-G</sub>	pBAD33-TssC1 <sub>VSV-G</sub>	<u>CTCTCTACTGTTTCTCCATACCCGTTTTTTTGGGCTAGCAGGAGGTATTACACCATGCTGATG</u> <u>TCTGTACAGAAAGAAAAGAACGTTG</u>
3-pBAD33-TssC1 <sub>VSV-G</sub>	pBAD33-TssC1 <sub>VSV-G</sub>	<u>GGTCGACTCTAGAGGATCCCCGGGTACCTTATTTTCCTAATCTATTCATTTCAATATCTGTATAC</u> <u>GCTTTTGCCTTCGGCATCTGCG</u>
5-pBAD33-TssC2 <sub>VSV-G</sub>	pBAD33-TssC2 <sub>VSV-G</sub>	<u>CTCTCTACTGTTTCTCCATACCCGTTTTTTTGGGCTAGCAGGAGGTATTACACCATGACAGTT</u> <u>GCATCAACATTAGG</u>
3-pBAD33-TssC2 <sub>VSV-G</sub>	pBAD33-TssC2 <sub>VSV-G</sub>	<u>GGTCGACTCTAGAGGATCCCCGGGTACCTTATTTTCCTAATCTATTCATTTCAATATCTGTATAA</u> <u>CTTACACTTGATGGTAAATCAGC</u>
T25T18C-5-4530	pClpV1-T18 / pClpV1-T25	<u>CGGATAACAATTTACACAGGAAACAGCTATGACCATGAATAACATGGAAAATTCGGCAG</u> <u>CCCT</u>
T18C-3-4530	pClpV1-T18	<u>CCTCGCTGGCGGCTAAGCTTGGCGTAATTAACGCGCATTTCCTGCCGCAG</u>
T25C-3-4530	pClpV1-T25	<u>GTTTGCGTAACCAGCCTGATGCGATTGCTGTAACGCGCATTTCCTGCCGCAG</u>
T25N-5-4530	pT25-ClpV1	<u>GGCGGGCTGCAGATTATAAAGATGACGATGACAAGAATAACATGGAAAATTCGGCAGCCC</u>
T18N-5-4530	pT18-ClpV1	<u>CGCCACTGCAGGGATTATAAAGATGACGATGACAAGAATAACATGGAAAATTCGGCAGCC</u> <u>CT</u>
T25T18N-3-4530	pT18-ClpV1 / pT25-ClpV1	<u>CGAGGTCGACGGTATCGATAAGCTTGATATCGAATTCTAGTTATAACGCGCATTTCCTGCCG</u> <u>CAG</u>
T25T18C-5-TssC2	pTssC2-T25	<u>CGGATAACAATTTACACAGGAAACAGCTATGACCATGACAGTTGCATCAACATTAGG</u>

T25C-3-TssC2	pT25-TssC2	GTTTGCCTAACCAGCCTGATGCGATTGCTGACTTACACTTGATGGTAAATCAGC
5- pETG-ClpV1-Nter	pETG20A-ClpV1-Nt	GGGGACAAGTTTGTACAAAAAAGCAGGCTTAGAAAAACCTGTACTTCCAGGGTGTGAATAA CATGGAAAATTC
3- pETG-ClpV1-Nter	pETG20A-ClpV1-Nt	GGACCACTTTGTACAAGAAAGCTGGGTCTTATTATAACGTCTCCGGACACTCA

For site-directed mutagenesis<sup>d,e,f</sup>

A-C1-Δh	pBAD33-TssC1 <sub>VSV-G</sub>	GTGGTATCTGAAGCGCATGCCGGCAGTCCGGTATCTGCCCTGAGTGCAC
A-C1-Δh	pBAD33-TssC1 <sub>VSV-G</sub>	GTGCACTCAGGGCAGATACCGGACTGCCGGCATGCGCTTCAGATACCAC
A-C2-Δh	pBAD33-TssC2 <sub>VSV-G</sub>	AGCAGGAGGTATTACACCATGACAGATGATTGTCTTGAAGAG
A-C2-Δh	pBAD33-TssC2 <sub>VSV-G</sub>	CTCTTCAAGACAATCATCTGTCATGGTGTAAATACCTCCTGCT
A-ClpV1-E24K	pIBA37-ClpV1 <sub>FLAG</sub> and pT18-ClpV1	CTGTGCCCGTGCACTGAAAGGCGCAGCCTCCCTTTG
B-ClpV1-E24K	pIBA37-ClpV1 <sub>FLAG</sub> and pT18-ClpV1	CAAAGGGAGGCTGCGCCTTTCAGTGCACGGGCACAG
A-ClpV1-R87E	pIBA37-ClpV1 <sub>FLAG</sub> and pT18-ClpV1	CCGTAGCGTACGCACTGAACCGCAGCTTGCGCAGTC
B-ClpV1-R87E	pIBA37-ClpV1 <sub>FLAG</sub> and pT18-ClpV1	GACTGCGCAAGCTGCGGTTCACTGCGTACGCTACGG
A-TssC1-E31K-K32E	pBAD33-TssC1 <sub>VSV-G</sub> and pTssC1-T25	GTATATGCTTCCCTGTTTAAAGAAATTAACCTGAGTCCGG
B-TssC1-E31K-K32E	pBAD33-TssC1 <sub>VSV-G</sub> and pTssC1-T25	CCGGA CTCAGGTAAATTTCTTTAAACAGGGAAGCATATAC

<sup>a</sup> Sequence annealing on the target plasmid underlined.

<sup>b</sup> FLAG or VSV-G epitope coding sequence *italicized*.

<sup>c</sup> Additional Shine Dalgarno sequence *italicized underlined*.

<sup>d</sup> Codons upstream and downstream the deletion *italicized*.

<sup>e</sup> Nucleotide substitutions in **bold**.

<sup>d</sup> Mutagenized codons underlined.

**Supplemental Table S2. Data collection and refinement statistics**

<b>DATA COLLECTION</b>	Soleil Proxima 1	Soleil Proxima 1
PDB	4HH5	4HH6
Proteins	ClpV1-Nt	ClpV1-Nt/TssC1-pept
Space group, cell (Å,°)	P2 <sub>1</sub> 2 <sub>1</sub> 2 <sub>1</sub> , 40.9, 58.7, 65.6	P2 <sub>1</sub> 2 <sub>1</sub> 2 <sub>1</sub> , 40.9, 46.85, 75.5
Resolution limits <sup>a</sup> (Å)	50.0- <b>2.0</b> (2.05-2.0)	50- <b>2.5</b> (2.56-2.5)
R <sub>meas</sub> <sup>a</sup> (%)	5.2 (38)	8.6 (72.3)
Nr. of observations <sup>a,b</sup>	146934 (9916)	29258 (1739)
Nr. unique reflections <sup>a,b</sup>	19805 (1405 )	5360 (388)
Mean(I)/sd(I) <sup>a</sup>	27.1 (5.5)	13.1 (2.2)
Completeness <sup>a</sup> (%)	96.1 (92.1)	99.6 (98.5)
Multiplicity <sup>a</sup>		
<b>REFINEMENT</b>		
Resolution <sup>a</sup> (Å)	43.8-2.0 (2.24-2.0)	36.0- <b>2.5</b> (2.79-2.5)
Nr of reflections <sup>a</sup>	10703( 2770)	5359 (1358)
Atoms : protein, ions, water	1275 / 1 /107	1297 / 27
Nr test set reflections	512	516
R <sub>work</sub> /R <sub>free</sub> <sup>a</sup> (%)	0.186/0.205 (0.181/0.234)	0.244/0.263 (28.1/32.1)
r.m.s.d.bonds (Å) / angles (°)	0.008 / 1.04	0.008 / 1.36
B-wilson / B-average (Å <sup>2</sup> )	28.35 / 29.6	57.6 / 55
Ramachandran: preferred/allowed (%)	97.5 / 2.5	91.6 / 6.0 / 2.4

<sup>a</sup> numbers into parenthesis refer to the highest resolution bin.

<sup>b</sup> Friedel pairs not merged

**Supplemental Table S3. Interaction between the ClpV1-N-terminal domain and the TssC1 peptide.**

(A) Analysis of the interaction surface. (B) Residues of TssC1 peptide interacting with the ClpV1-N-terminal domain. (C) Residues of the ClpV1-N-terminal domain interacting with the TssC1 peptide. ASA : accessible surface area. BSA : buried surface area. Analysis performed with PISA.

**A**

	Peptide 1		ClpV-Nt	
<b>Interface Å<sup>2</sup></b>	622.5	38.4%	520.8	6.6%
<b>Total surface Å<sup>2</sup></b>	1620.9		7912.5	

**B**

<b>Peptide 1</b>	<b>ASA</b>	<b>BSA</b>
ASP 23	70.21	24.4
VAL 25	72.85	20.3
TYR 26	133.51	113.0
SER 28	59.69	19.7
LEU 29	118.81	113.0
PHE 30	130.83	62.7
GLU 31	131.80	22.1
LYS 32	142.15	101.2
ILE 33	97.17	75.5
ASN 34	114.88	57.5
LEU 35	230.48	12.6

**C**

<b>ClpV1-Nt</b>	<b>ASA</b>	<b>BSA</b>
SER 8	31.16	10.5
ALA 9	67.64	25.9
LEU 12	57.58	52.7
ARG 13	182.26	46.3
LEU 15	10.34	10.3
HIS 17	169.33	52.7
ALA 20	41.75	38.7
LEU 23	13.70	13.5
GLU 24	109.71	68.4
ALA 27	26.96	26.8
SER 28	55.93	7.2
GLN 31	32.77	2.5
ILE 38	5.36	4.2
ARG 87	215.54	77.3
PRO 88	31.75	28.6
GLN 89	64.68	27.6
LEU 90	41.49	18.1