



HAL
open science

Maturation of the [Ni–4Fe–4S] active site of carbon monoxide dehydrogenases

Meriem Merrouch, Martino Benvenuti, Marco Lorenzi, Christophe Léger,
Vincent Fourmond, Sébastien Dementin

► **To cite this version:**

Meriem Merrouch, Martino Benvenuti, Marco Lorenzi, Christophe Léger, Vincent Fourmond, et al..
Maturation of the [Ni–4Fe–4S] active site of carbon monoxide dehydrogenases. *Journal of Biological Inorganic Chemistry*, 2018, 23 (4), pp.613-620. 10.1007/s00775-018-1541-0 . hal-01816335

HAL Id: hal-01816335

<https://amu.hal.science/hal-01816335>

Submitted on 28 Jan 2020

HAL is a multi-disciplinary open access archive for the deposit and dissemination of scientific research documents, whether they are published or not. The documents may come from teaching and research institutions in France or abroad, or from public or private research centers.

L'archive ouverte pluridisciplinaire **HAL**, est destinée au dépôt et à la diffusion de documents scientifiques de niveau recherche, publiés ou non, émanant des établissements d'enseignement et de recherche français ou étrangers, des laboratoires publics ou privés.



Distributed under a Creative Commons Attribution 4.0 International License



Maturation of the [Ni–4Fe–4S] active site of carbon monoxide dehydrogenases

Mériem Merrouch¹ · Martino Benvenuti¹ · Marco Lorenzi¹ · Christophe Léger¹ · Vincent Fourmond¹ · Sébastien Dementin¹

Received: 13 November 2017 / Accepted: 30 January 2018 / Published online: 14 February 2018
© The Author(s) 2018, corrected publication May/2018

Abstract

Nickel-containing enzymes are diverse in terms of function and active site structure. In many cases, the biosynthesis of the active site depends on accessory proteins which transport and insert the Ni ion. We review and discuss the literature related to the maturation of carbon monoxide dehydrogenases (CODH) which bear a nickel-containing active site consisting of a [Ni–4Fe–4S] center called the C-cluster. The maturation of this center has been much less studied than that of other nickel-containing enzymes such as urease and NiFe hydrogenase. Several proteins present in certain CODH operons, including the nickel-binding proteins CooT and CooJ, still have unclear functions. We question the conception that the maturation of all CODH depends on the accessory protein CooC described as essential for nickel insertion into the active site. The available literature reveals biological variations in CODH active site biosynthesis.

Keywords Carbon monoxide dehydrogenase · Active site · Iron–sulfur cluster · Maturation

Introduction

Nine nickel-containing enzymes have been discovered and characterized so far, but there exists certainly others [1, 2]. Among them, seven consume or produce small molecules (hydrogenase, carbon monoxide dehydrogenase, superoxide dismutase, urease, acireductone dioxygenase, methyl-coM reductase and acetyl-CoA synthase). The other two (glyoxylase I and lactate racemase) are involved in lactate metabolism. The structures of their active sites are diverse in terms of nature and number of ligands to the Ni. In most cases, the Ni is coordinated by acidic residues (Cys, His, Glu, Asp, carbonylated Lys) or water molecules. The three exceptions are carbon monoxide dehydrogenase, in which Ni is also coordinated to inorganic sulfur in a [Ni–4Fe–4S] cluster, lactate racemase in which Ni is part of a non-protein

cofactor (pincer) linked to a Lys of the protein backbone and methyl-coM reductase in which Ni is part of coenzyme F430. Depending on the enzyme, Ni participates in catalysis either by acting as a Lewis acid or by promoting redox chemistry.

Although the insertion of Ni seems spontaneous in glyoxylase I and acireductone dioxygenase, it requires dedicated biological machineries in the other cases. The present review focuses on the carbon monoxide dehydrogenases from anaerobic microorganisms (Ni-containing CODH) which catalyze the reversible oxidation of CO with high turnover frequencies [3–6]. These enzymes bear a nickel-containing active site, the so-called C-cluster, which consists of a [Ni–3Fe–4S] cubane connected to a unique iron site through a linking sulfide [7–9].

Generalities

Some microorganisms can grow in the presence of carbon monoxide, which they use as a source of carbon and/or energy [10, 11]. The oxidation of CO to CO₂ by these microorganisms is catalyzed by carbon monoxide dehydrogenases (CODH). Nevertheless, CODH from aerobic and anaerobic bacteria are not phylogenetically related and have distinct

The original version of this article was revised due to a retrospective Open Access order.

✉ Sébastien Dementin
dementin@imm.cnrs.fr

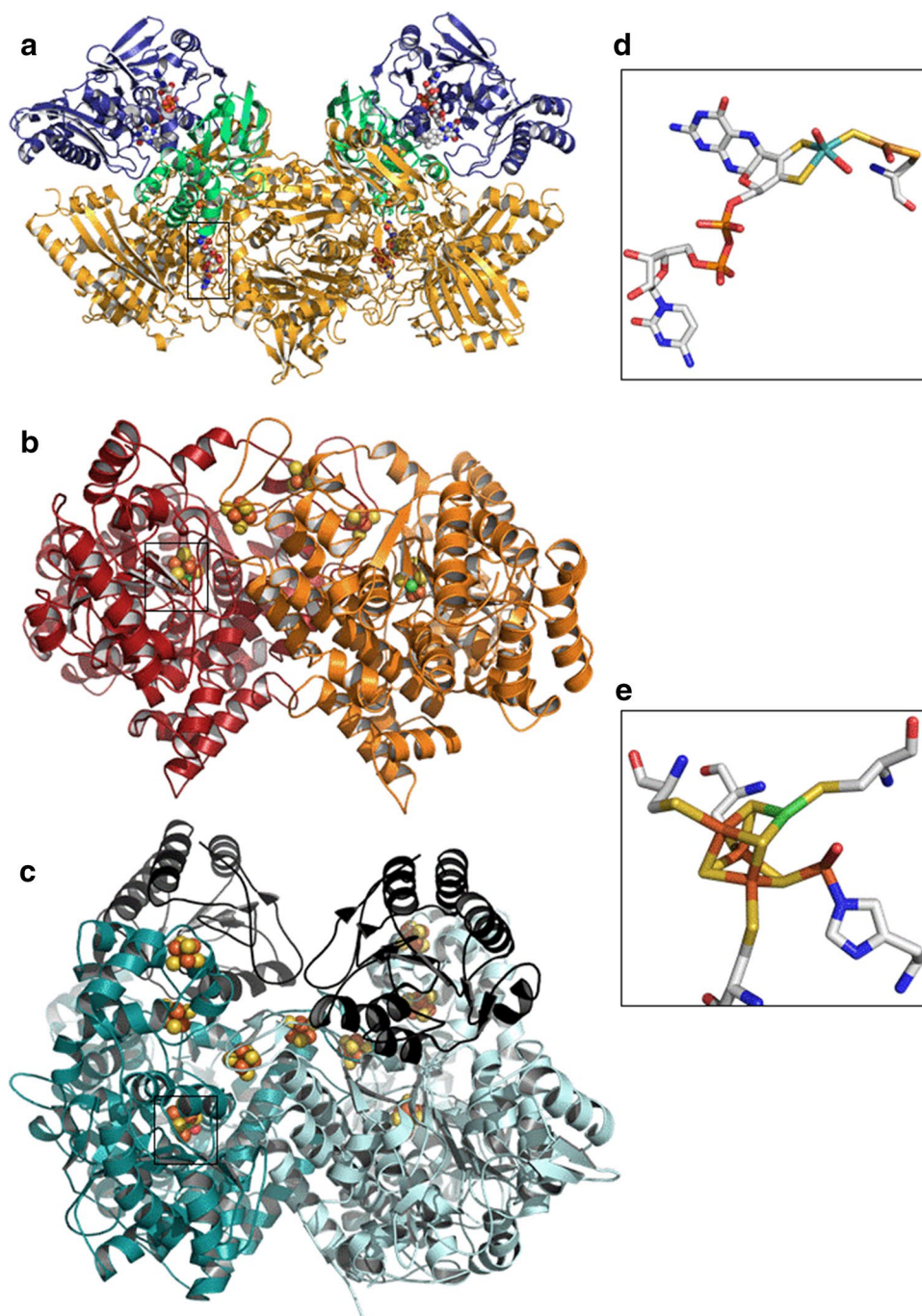
¹ Aix-Marseille Université, CNRS, BIP UMR 7281, Institut de Microbiologie de la Méditerranée, 31 Chemin J. Aiguier, 13402 Marseille Cedex 20, France

structures and kinetic properties. Most aerobic CO-utilizing bacteria (carboxydrotrophs) oxidize CO in their respiratory chain [12] using a variety of acceptors such as O₂ (*Oligotropha carboxidovorans* [13]) or nitrate for dissimilatory nitrate reduction (*Burkholderia xenovorans* LB400 [11]). Some photosynthetic bacteria, such as *Rhodospseudomonas gelatinosa*, can use CO as a carbon source by first converting it into CO₂, which is then reduced into carbohydrate through the Calvin–Benson–Bassham cycle [14]. CODH from aerobic bacteria are heterotrimeric enzymes and belong

to the xanthine oxidase family; their active site a binuclear cluster of Mo and Cu (MoCu–CODH) (Fig. 1a, d). These MoCu–CODH only catalyze the oxidation of CO (not the reduction of CO₂) with a turnover frequency of up to 100 s⁻¹ [13].

Here we focus on the CODH from anaerobic microorganisms (Ni-containing CODH), which we will abbreviate CODH in the following text for clarity. These enzymes contain a unique nickel-containing active site [Ni–4Fe–4S], called the C-cluster. This cluster consists of a [Ni–3Fe–4S]

Fig. 1 Structures of prototypical Ni-containing CODH and their active sites. **a** Structure of the MoCu–CODH from *Oligotropha carboxidovorans*, PDB: 1N63 [30]. The L-subunit (89 kDa) in yellow, contains the active site. The S-subunit (18 kDa) in green, contains the two [2Fe–2S] clusters and the M-subunit (30 kDa) binds a FAD cofactor. **b** Structure of the CODH-II from *Carboxydotherrmus hydrogenoformans* (Ch), PDB: 3B53 [31]. Each subunit (67 kDa) of this homodimer is colored in red or in orange. **c** Structure of the CODH from *Methanosarcina barkeri*, PDB: 3CF4 [32]. Subunit α (89 kDa) containing the nine iron–sulfur clusters is colored in blue and the subunit ϵ (20 kDa) is colored in black. Structures of the active sites of the MoCu–CODH from *Oligotropha carboxidovorans* (**d**) and of the CODH-II from Ch (**e**). The colors for the atoms in **d**, **e** are green for Ni, orange for Fe, yellow for S, red for O, blue for N, turquoise for Mo, light orange for Cu and white for C



cubane connected to a unique iron site through a linking sulfide (Fig. 1e) [7–9]. CODH catalyze the oxidation of CO with turnover frequencies ranging from hundreds to tens of thousands turnovers per second [3–6]. CODH-I from *Carboxydotherrnus hydrogenoformans* (Ch) is the most active, with a turnover rate of $39,000\text{ s}^{-1}$ at $70\text{ }^{\circ}\text{C}$, pH 8 [3]. Contrary to Mo–CODH, CODH also catalyze the reverse reaction (the reduction of CO_2 into CO). These enzymes are divided in four classes depending on their structures and functions [15]. CODH of classes I, II and III are bifunctional, they form a complex with acetyl-CoA synthase (ACS/CODH), while class IV CODH are monofunctional. Class I and II CODH form heterotetramers containing nine iron–sulfur clusters (Fig. 1c). CODH of class III and IV are homodimeric, and contain three iron–sulfur clusters (Fig. 1b).

As exemplified by the photosynthetic bacterium *Rhodospirillum rubrum* (Rr), CO can be used as an alternative to light as a source of energy [16]. It is hypothesized that cytoplasmic oxidation of CO is coupled to the reduction of protons. The product dihydrogen would diffuse through the internal membrane and be oxidized by a periplasmic hydrogenase, leading to the formation of a proton motive force [3, 17, 18]. Some anaerobic sulfate reducing microorganisms couple the oxidation of CO to the reduction of sulfate [19–21] and some methanogenic archaea use CO as carbon/electron donor for methane formation [22, 23].

In cases where CODH is in complex with acetyl-CoA synthase (ACS), and is therefore called bifunctional, it reduces CO_2 to CO which is channeled to ACS, whose active site (called A-cluster) is a bi-Ni center attached to an Fe–S cluster [24, 25]. This CODH/ACS complex is found in some anaerobic microorganisms, such as acetogenic and sulfate-reducing bacteria and methanogenic archaea, where CO_2 is used as a source of carbon through the Wood–Ljungdahl

pathway [26–29]. The major function of CODH in this metabolic pathway requires coordination of CO_2 reduction at the C-cluster with CO channeling and reaction with a methyl group and CoA at the A-cluster active site of ACS.

This article reviews the mechanisms and accessory proteins/chaperones involved in the maturation of this unique C-cluster. There has been a general agreement that CODH maturation depends on the accessory protein *cooC*, but on the basis of the recent literature, it appears that the maturation of CODH may differ from one enzyme to another, and that in some cases, it is independent of any specific maturase.

Maturation of the [Ni–4Fe–4S] C-cluster of CODH

The diversity of the operons encoding for CODH (Fig. 2) suggests a variability in the maturation mechanisms. Some operons encoding for a CODH do not contain any maturase (e.g., CODH-II from Ch [27]), whereas many of them contain the maturation gene *cooC*. Other accessory genes can be present in the CODH operons in addition to *cooC*: for example, in *Rhodospirillum rubrum* (Rr) [16] and *Citrobacter amalonaticus* Y19 (CaY19) [30], the operons also contain the *cooJ* and *cooT* genes.

Physiological importance of accessory proteins

The physiological functions of *cooC*, *cooT* and *cooJ*, when present in CODH operons, have mostly been studied in the photosynthetic bacterium *Rhodospirillum rubrum*. The

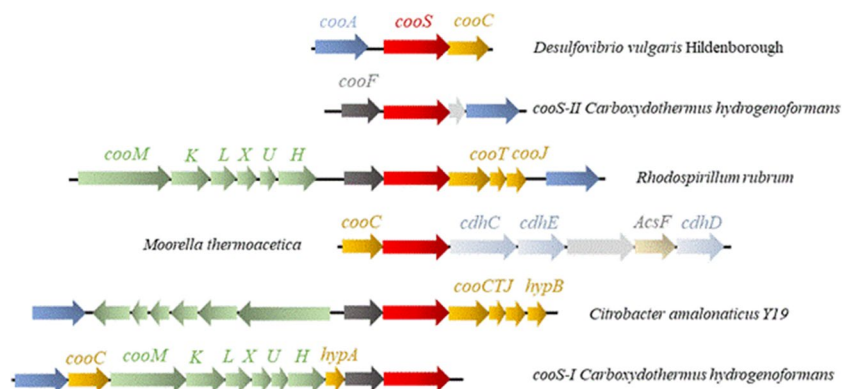


Fig. 2 Operons encoding for CODH in *Desulfovibrio vulgaris* Hildenborough (Dv), *Carboxydotherrnus hydrogenoformans* Z-2901 (Ch), *Rhodospirillum rubrum* ATCC 11170 (Rr), *Moorella thermoacetica* and *Citrobacter amalonaticus* Y19 (CaY19). The operons coding for Ch CODH I and II are represented in this figure. Arrows coding for Ch CODH I and II are represented in this figure. Arrows in red represent the *cooS* genes encoding for CODH, in yellow genes

encoding for maturation proteins, in blue genes encoding for the CO-dependent transcriptional activator *cooA*, in dark gray genes encoding for ferredoxin-like proteins, in green genes encoding for hydrogenase subunits, in gray-blue genes encoding for acetyl-CoA synthase subunits and in light gray genes encoding for hypothetical proteins of unknown functions

group of Ludden has shown that, in the absence of light, the bacterium grows using CO as energy source. This growth depends on CODH: a Rr strain in which *cooS* has been inactivated grows normally under light but does not grow in the presence of CO in the dark [16]. Strains of Rr in which the genes coding for CooC, CooT or CooJ have been inactivated do not grow unless nickel is added to the growth medium [16]. The presence of CooC is particularly crucial, since only a large excess of nickel (650 μM) restores the growth of the *cooC*-inactivated strain. Therefore, these accessory proteins are important to ensure that CODH is fully Ni-loaded and active when nickel is scarce. However, their precise action and their interplay remain unknown. They may be directly involved in nickel delivery into the active site of CODH or act indirectly by being involved in intracellular nickel transport. Note that they are probably exclusively dedicated to CODH maturation: they are not involved in import of exogenous nickel [31] and inactivating these genes has no effect of the Ni–Fe hydrogenase activity [32, 33].

Biochemical and structural characterization of the accessory proteins

CooC

CooC is a 30 kDa ATPase which belongs to the MRP/MinD family of the SIMIBI class (Signal recognition GTPases, MinD superfamily and BioD superfamily) [34]. Rr CooC and Ch CooC-1 hydrolyze ATP at a slow rate in vitro (k_{cat} of 5 nmol min^{-1} for Ch CooC) [35, 36] Rr CooC also hydrolyzes GTP. The in vitro NTPase rates, although low, are in the same range as those of other Ni-metallochaperones which hydrolyze GTP (e.g., HypB and ureG, which are involved in the maturation of NiFe hydrogenase and urease, respectively) but hydrolysis might occur at a faster rate in the cellular context.

Ch CooC-1 is monomeric [35, 37] and forms a dimer in the presence of ADP and/or Zn^{2+} (Fig. 3a). According to the structure of Ch CooC-1 (Fig. 3), ADP binds to the deviant

Walker A motif (GKGGVGGKTT) in the P-loop (phosphate-binding loop). Zinc is bound covalently at the interface of two monomers by two strictly conserved cysteines of each monomer (Cys112 and Cys114) (Fig. 3b). The structure of Ch CooC-1 in the presence of nickel and/or ATP has not been determined. However, Jeoung et al. showed that CooC-1 binds one nickel per dimer with a K_{d} of 0.4 μM [35] and that Zn and Ni compete for the same tetracoordination site at the interface of the dimer [37]. Whether all CooC proteins bind nickel is, however, unclear: the protein from Rr does not tightly bind nickel (Ni content lower than 0.1 Ni ion per dimer) under the conditions used in the study of Jeon et al. [36].

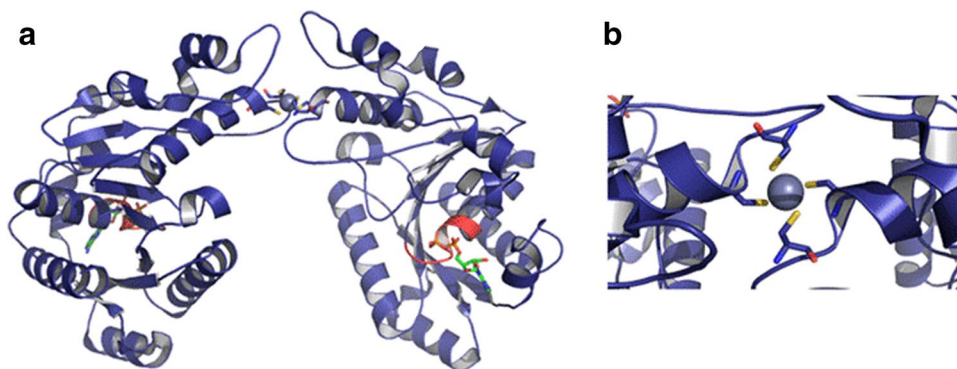
The available structures of Ch CooC-1 show that ADP binding induces conformational changes: the distance between the metal (Zn) and the thiolate group of cysteine 114 becomes shorter (from 2.5 to 2.2 \AA) and a flexible loop, the CAP loop, deviates from the metal binding site, making it more open to metals [37]. Thus, the presence of ADP seems to favor nickel binding. The group of Dobbek has constructed a structural model of ATP-bound CooC, based on the structure of an ATPase of the same family involved in chromosome segregation [38]. They proposed that ATP binding increases the distances between the cysteines of the metal binding site, which induces the release of nickel [37].

CooT

Timm et al. have recently resolved the crystal structure of CooT from Rr [39]. It is a small protein of 7.1 kDa, which dimerizes and binds one nickel per dimer with a K_{d} of 9 nM. The crystal structure of CooT shows that the protein is composed of seven β -sheets. Site-directed mutagenesis and circular dichroism experiments showed that the position 2 cysteine is involved in nickel binding. The authors hypothesized that Cys2 from each monomer coordinates nickel. However, no crystal structure of Ni-bound CooT could be obtained.

Using a bioinformatic search on genomes, Timm et al. have identified 111 proteins homologous to CooT. Among

Fig. 3 **a** Structure of CooC-1 from *Carboxydotherrmus hydrogenoformans*, PDB: 3KJI [40]. **b** An atom of zinc in gray is at the interface of the two monomers, bound by cysteines 112 and 114. ADP is bound to the deviant Walker A motif (GKGGVGGKTT), shown in red



the CooT-containing proteomes, 85 also contain CODH [39], showing that CooT-dependent maturation of CODH is probably more widespread than was previously expected.

CooJ

Rr CooJ is a small protein of 12.6 kDa which has a histidine-rich domain (16 histidines in the C-terminal domain). Biochemical studies revealed that CooJ binds four nickel per monomer with a dissociation constant of 4.3 μM [40], but its precise role in Ni cluster assembly is unknown.

CooC-dependent maturation

Let us first focus on the cases in which CODH are encoded in an operon also containing *cooC*.

Production of carbon monoxide dehydrogenases in the absence of CooC

The heterologous production of Ch CODH-I in *E. coli*, in the absence of CooC-1 leads to the formation of an enzyme that contains three times less nickel, and is three times less active than when it is expressed in the presence of CooC [41]. Similarly, the CODH from *Desulfovibrio vulgaris* Hildenborough (Dv) produced heterologously in *D. fructosovorans* in the absence of CooC contains less than 0.5 nickel per dimer, compared to 0.8–1.8 Ni/dimer when it is co-produced with CooC [5]. Dv CODH is inactive when produced without CooC and cannot be activated with exogenous Ni. In both cases, it therefore appears that CooC is important for nickel insertion into the active site, even if the effect is more pronounced for the Dv enzyme.

Jeon et al. showed that the hydrolysis of ATP by CooC in Rr is necessary for nickel delivery and the production of a fully matured CODH [36]. Indeed, a mutated Rr strain in which CooC has no ATPase activity (K13Q CooC) produces a nickel-deficient and almost inactive CODH. Addition of nickel to the culture medium does not compensate for the deficiency of CooC [36]. As mentioned before, the inactivation of *cooC* prevents the CODH-dependent growth unless a large concentration of nickel is added in the medium [16]. This suggests that growth can be sustained even if the CODH is only partly Ni-loaded.

The UV visible spectra of Dv CODH obtained in the absence or in the presence of CooC are similar [5]. The absence of CooC does not affect the iron content of CODH, which suggests that CooC is not involved in the biosynthesis of the iron–sulfur clusters of CODH (including that of the active site). These iron–sulfur clusters are probably produced through generic iron–sulfur cluster assembly machineries, while CooC is specifically devoted to the delivery of nickel.

The heterologous production of the complex carbon monoxide dehydrogenase/acetyl-coA synthase from *Clostridium carboxidivorans* (Cc) in *Clostridium acetobutylicum* induces the production of CO by the host organism. In the absence of added nickel, the presence of Cc CooC enhances CO production. On the contrary, the CO production does not depend on Cc CooC when the medium is supplemented in nickel (50–100 μM). This study supports the idea that CooC facilitates nickel insertion into the active site of CODH when nickel is at trace levels [42].

CooC is not specific to the maturation of monofunctional CODH, the heterologous maturation of the CODH from *Moorella thermoacetica*, which is in complex with acetyl-CoA synthase, also seems to depend on the presence of this accessory protein, based on the results of experiments where the bifunctional enzyme was produced in *E. coli* [6].

Proposed mechanisms of CooC-driven nickel insertion into the active site

Two different mechanisms for the maturation of the active site of CODH in which CooC is essential are proposed in the literature. In a first mechanism, CooC binds nickel and inserts it into the active site of CODH in a reaction that is coupled to ATP hydrolysis [37]. In a second mechanism, CooC acts as a chaperone that induces a conformational change of the active site of CODH by hydrolyzing ATP, and then the folded active site of CODH spontaneously binds Ni [36].

We argued that the latter mechanism is more likely to be operational, since the Dv CODH produced in the absence of its maturase CooC, contains hardly any nickel, is inactive and cannot be activated in vitro (with nickel under reducing conditions) contrary to the enzyme that has been co-produced with CooC [5]. Similar observations were reported for Rr CODH: a strain producing a deficient CooC produces a nickel-depleted CODH which can only be partially activated with nickel under reducing conditions (to approximately 15% of the wild-type CODH activity); these CODH cannot be fully activated in vitro, which suggests that the active site has not the right conformation to bind nickel [5, 36]. As a matter of fact, conversely, when WT Rr is grown in a Ni-depleted medium, the purified CODH does not contain Ni but activates upon incubation with NiCl_2 under reducing conditions. This shows that the presence of CooC influences the ability of CODH to bind Ni. CooC is the Ni donor in the case of Ch CooC-1, but it may be that this function is performed by accessory proteins (CooJ and CooT) in the case of organisms such as Rr, whose CooC does not bind Ni. In the case of Dv and Rr, free Ni can be delivered directly in the active site of CODH, at least in vitro, provided the enzyme has been co-produced with CooC.

We depict the current hypothesis in Fig. 4. In the first step, CooC acts as a chaperone which properly folds the

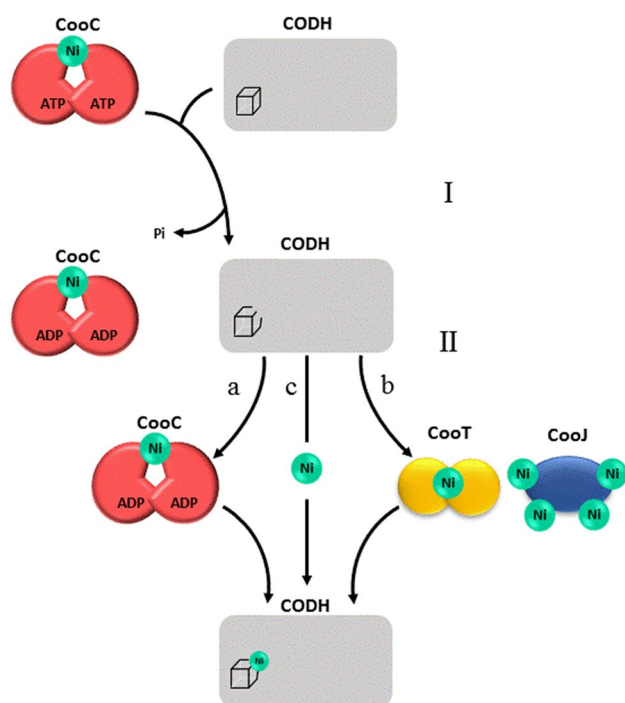


Fig. 4 Proposed mechanisms of CooC-dependent CODH maturation. Step I: CooC derives energy from the hydrolysis of ATP to induce a conformational change of the active site. Step II: the active site is in a favorable folding to receive nickel. The active site of CODH may acquire nickel from **a** nickel-loaded CooC, **b** other nickel-loaded accessory proteins (CooJ and CooT) or **c** free nickel available in the environment

active site in a conformation that makes it ready to bind Ni, at the cost of ATP hydrolysis. In a second step, nickel binds to the active site according to three possible routes depending on the organism: (a) it can be delivered by Ni-loaded CooC itself if its affinity for Ni is high (Ch CODH-I), (b) if CooC has low affinity for Ni (Rr CODH), CooT and CooJ assist it for the delivery of nickel into the folded active site, and (c) free Ni can possibly be inserted without the need for another protein (Dv and Rr CODH).

Like what we propose for some CooC proteins, maturases with double function have already been described. NifH, involved in the maturation of nitrogenase, for instance, is an ATPase that belongs to the MinD family. It binds a [4Fe–4S] cluster at the interface of the two monomers [43]. First, hydrolysis of ATP by NifH induces a conformational change which results in electron transfer from the [4Fe–4S] cluster to the nitrogenase. Then NifH is involved in the biosynthesis of the molybdenum iron cofactor, by delivering homocitrate and molybdenum [44, 45]. More in-depth studies and comparisons of CooC from different sources are required to support our hypothesis.

Maturation without any specific accessory protein

Surprisingly, whereas the maturation of some CODH is strictly dependent on the presence of one or several maturases, other CODH can be fully matured in the absence of any specific accessory protein.

In organisms that express several CODH, operons coding for certain CODH do not contain genes encoding for accessory proteins, which suggests that these CODH may either depend on accessory proteins encoded by other CODH operons (for example, the Ch CODH-II and -IV operons do not contain a *cooC* copy but the CODH-I and III operons do) or that their maturation is not assisted by any accessory protein [27].

The heterologous production in *E. coli* of Ch CODH-II or -IV, for instance, leads to the formation of nickel-loaded, mature and active CODH [8, 46, 47]. It is important to note that in these studies *E. coli* is grown in the presence of high concentrations of nickel (more than 0.5 mM) to favor nickel insertion into CODH. It may be that the high concentration of nickel compensates for the absence of accessory proteins. This is probably the case for the CODH from *Citrobacter amalonaticus* Y19 (CaY19). The *cooS* gene from CaY19 precedes four genes encoding for accessory proteins: CooC, CooT, CooJ and HypB (Fig. 2) [48]. Some CODH activity could be measured in crude extracts of an *E. coli* strain in which the CaY19 CODH was produced in the absence of the accessory proteins, suggesting that the latter are not strictly necessary for Ni delivery to the active site. However, the actual metal content of the heterologously produced CODH was not determined so that it is unknown whether the enzyme was fully Ni-loaded. Surprisingly, among the proteins encoded in the *coo* operon, only CooF is essential for the formation of an active CaY19 CODH. CooF is a small iron–sulfur-containing protein (22 kDa for CooF of Rr) which probably shuttles electrons from CODH to the CO-induced Ni–Fe hydrogenase Coo [17, 49]. Its potential function in CaY19 CODH maturation remains unknown.

Regarding heterologous expression, another hypothesis is that accessory proteins of other Ni-containing enzymes, such as Ni–Fe hydrogenases, from the heterologous host may be involved in the maturation of CODH [6, 48]. In *Helicobacter pylori*, it is well known that Ni–Fe hydrogenase accessory proteins can mature another nickel enzyme, urease. Deletions of *hypA* and *hypB* cause a decrease in urease activity (40- and 200-fold, respectively) compared to the wild-type strain [50]. Site-directed mutagenesis studies showed that the GTPase activity of HypA and the nickel-binding site of HypB are involved in the maturation of the urease of *H. pylori* [51, 52]. On the contrary, accessory proteins of urease from *H. pylori* cannot mature Ni–Fe hydrogenase [53, 54]. Similar conclusions have been drawn regarding the metallochaperones CooC, CooT and CooJ from Rr which are not

involved in the maturation of the CO-induced Ni–Fe hydrogenase (referred to as Coo hydrogenase) [32]. Although the cross-talk between maturation machineries of different Ni-containing enzymes is established, the involvement of hydrogenase accessory proteins, such as HypA and HypB, in the Ni-acquisition of CODH remains to be demonstrated.

Last, we note that there are also examples of genomes that contain a CODH but no *cooC* gene, which definitely establishes that CODH maturation can be CooC-independent. It is so in *C. acetobutylicum*, whose gene CA_C0116 is annotated as a CODH and codes for a protein that has all amino acids known to be essential for CODH function (this is unlike the CA_C2498 gene which is annotated as a CODH but lacks one cysteine residue of the C-cluster and probably codes for a hybrid cluster protein). Preliminary results in our group show that indeed, expression of CA_C0116 in the absence of any CooC leads to a functional CODH.

Concluding remarks

Although small in numbers, Ni-containing enzymes exhibit a remarkable diversity in terms of active site architecture and catalytic properties. They are often involved in crucial metabolic pathways, catalyzing reactions related to carbon fixation, energy conversion or pathogenicity in many microorganisms. The structure of the active site of some of these enzymes is so elaborated that accessory proteins are necessary to bind the Ni ion and insert it. This is the case for NiFe hydrogenase, urease, lactate racemase and methyl-coM reductase [55–58]. As also noted by Zeer-Wanklyn and Zamble [59], the common point of these maturation processes is that they depend on an NTP hydrolysis, which supplies the required energy. Focusing on CODH, CooC (sometimes assisted by CooJ and CooT), is an ATPase involved in Ni insertion in the active site but the mechanism involved remains undetermined. Examination of the literature reveals that not all CODH are CooC-dependent, which is surprising considering that the active site of all Ni-containing CODH is believed to be the same. It is not clear in these cases whether CooC is substituted by the Ni insertion machinery of other Ni-enzymes or if Ni spontaneously binds the active site. Understanding how CooC works and how and why some CODH do not depend on this accessory protein is certainly part of the most fascinating questions in the field.

Acknowledgements The authors acknowledge financial support from CNRS, Aix Marseille Université, Agence Nationale de la Recherche (ANR-12-BS08-0014, ANR-14-CE05-0010, ANR-15-CE05-0020, ANR-17-CE11-0027) and the A*MIDEX Grant (ANR-11-IDEX-0001-02) funded by the French Government “Investissements d’Avenir” program. M.L. thanks the Erasmus program for funding. M.M., M.B., C.L., V.F. and S.D. are members of FrenchBIC (<http://frenchbic.cnrs.fr>).

Open Access This article is distributed under the terms of the Creative Commons Attribution 4.0 International License (<http://creativecommons.org/licenses/by/4.0/>), which permits use, duplication, adaptation, distribution and reproduction in any medium or format, as long as you give appropriate credit to the original author(s) and the source, provide a link to the Creative Commons license and indicate if changes were made.

References

- Ragsdale SW (2009) *J Biol Chem* 284:18571–18575
- Boer JL, Mulrooney SB, Hausinger RP (2014) *Arch Biochem Biophys* 544:142–152
- Svetlitchnyi V, Peschel C, Acker G, Meyer O (2001) *J Bacteriol* 183:5134–5144
- Ensign SA, Bonam D, Ludden PW (1989) *Biochemistry* 28:4968–4973
- Hadj-Said J, Pandelia ME, Leger C, Fourmond V, Dementin S (2015) *Biochim Biophys Acta Bioenerg* 1847:1574–1583
- Loke HK, Bennett GN, Lindahl PA (2000) *Proc Natl Acad Sci USA* 97:12530–12535
- Drennan CL, Heo J, Sintchak MD, Schreiter E, Ludden PW (2001) *Proc Natl Acad Sci USA* 98:11973–11978
- Dobbek H, Svetlitchnyi V, Gremer L, Huber R, Meyer O (2001) *Science* 293:1281–1285
- Darnault C, Volbeda A, Kim EJ, Legrand P, Vernede X, Lindahl PA, Fontecilla-Camps JC (2003) *Nat Struct Biol* 10:271–279
- Ragsdale SW (2004) *Crit Rev Biochem Mol Biol* 39:165–195
- King GM, Weber CF (2007) *Nat Rev Microbiol* 5:107–118
- Cypionka H, Meyer O (1983) *J Bacteriol* 156:1178–1187
- Hille R, Dingwall S, Wilcoxon J (2015) *J Biol Inorg Chem* 20:243–251
- Uffen RL (1983) *J Bacteriol* 155:956–965
- Lindahl PA (2002) *Biochemistry* 41:2097–2105
- Kerby RL, Ludden PW, Roberts GP (1995) *J Bacteriol* 177:2241–2244
- Singer SW, Hirst MB, Ludden PW (2006) *Biochim Biophys Acta* 1757:1582–1591
- Soboh B, Linder D, Hedderich R (2002) *Eur J Biochem* 269:5712–5721
- Henstra AM, Dijkema C, Stams AJ (2007) *Environ Microbiol* 9:1836–1841
- Parshina SN, Sipma J, Henstra AM, Stams AJ (2010) *Int J Microbiol* 2010:319527
- Hocking WP, Roalkvam I, Magnussen C, Stokke R, Steen IH (2015) *Archaea* 2015:235384
- Diender M, Stams AJ, Sousa DZ (2015) *Front Microbiol* 6:1275
- Oelgeschlager E, Rother M (2009) *FEMS Microbiol Lett* 292:254–260
- Drennan CL, Doukov TI, Ragsdale SW (2004) *J Biol Inorg Chem* 9:511–515
- Volbeda A, Fontecilla-Camps JC (2004) *J Biol Inorg Chem* 9:525–532
- Seravalli J, Ragsdale SW (2000) *Biochemistry* 39:1274–1277
- Wu M, Ren Q, Durkin AS, Daugherty SC, Brinkac LM, Dodson RJ, Madupu R, Sullivan SA, Kolonay JF, Haft DH, Nelson WC, Tallon LJ, Jones KM, Ulrich LE, Gonzalez JM, Zhulin IB, Robb FT, Eisen JA (2005) *PLoS Genet* 1:e65
- Ragsdale SW, Pierce E (2008) *Biochim Biophys Acta* 1784:1873–1898
- Can M, Armstrong FA, Ragsdale SW (2014) *Chem Rev* 114:4149–4174
- Ainala SK, Seol E, Park S (2015) *J Biotechnol* 211:79–80

31. Watt RK, Ludden PW (1999) *J Bacteriol* 181:4554–4560
32. Fox JD, Kerby RL, Roberts GP, Ludden PW (1996) *J Bacteriol* 178:1515–1524
33. Fox JD, He Y, Shelver D, Roberts GP, Ludden PW (1996) *J Bacteriol* 178:6200–6208
34. Leipe DD, Wolf YI, Koonin EV, Aravind L (2002) *J Mol Biol* 317:41–72
35. Jeoung JH, Giese T, Grunwald M, Dobbek H (2009) *Biochemistry* 48:11505–11513
36. Jeon WB, Cheng J, Ludden PW (2001) *J Biol Chem* 276:38602–38609
37. Jeoung JH, Giese T, Grunwald M, Dobbek H (2010) *J Mol Biol* 396:1165–1179
38. Draper GC, Gober JW (2002) *Annu Rev Microbiol* 56:567–597
39. Timm J, Brochier-Armanet C, Perard J, Zambelli B, Ollagnier-de-Choudens S, Ciurli S, Cavazza C (2017) *Metallomics* 9:575–583
40. Watt RK, Ludden PW (1998) *J Biol Chem* 273:10019–10025
41. Inoue T, Takao K, Fukuyama Y, Yoshida T, Sako Y (2014) *Biosci Biotechnol Biochem* 78:582–587
42. Carlson ED, Papoutsakis ET (2017) *Appl Environ Microbiol* 83:e00829–17
43. Georgiadis MM, Komiya H, Chakrabarti P, Woo D, Kornuc JJ, Rees DC (1992) *Science* 257:1653–1659
44. Rubio LM, Ludden PW (2005) *J Bacteriol* 187:405–414
45. Hu Y, Ribbe MW (2016) *Annu Rev Biochem* 85:455–483
46. Inoue T, Yoshida T, Wada K, Daifuku T, Fukuyama K, Sako Y (2011) *Biosci Biotechnol Biochem* 75:1392–1394
47. Domnik L, Merrouch M, Goetzl S, Jeoung JH, Leger C, Dementin S, Fourmond V, Dobbek H (2017) *Angew Chem Int Ed Engl* 56:15466–15469
48. Sekar BS, Raj SM, Seol E, Ainala SK, Lee J, Park S (2014) *Int J Hydrogen Energ* 39:15446–15454
49. Ensign SA, Ludden PW (1991) *J Biol Chem* 266:18395–18403
50. Hube M, Blokesch M, Bock A (2002) *J Bacteriol* 184:3879–3885
51. Mehta N, Olson JW, Maier RJ (2003) *J Bacteriol* 185:726–734
52. Mehta NS, Benoit S, Mysore JV, Sousa RS, Maier RJ (2005) *Infect Immun* 73:5311–5318
53. Olson JW, Mehta NS, Maier RJ (2001) *Mol Microbiol* 39:176–182
54. Benoit SL, Zbell AL, Maier RJ (2007) *Microbiology* 153:3748–3756
55. Lacasse MJ, Zamble DB (2016) *Biochemistry* 55:1689–1701
56. Farrugia MA, Macomber L, Hausinger RP (2013) *J Biol Chem* 288:13178–13185
57. Desguin B, Soumillion P, Hausinger RP, Hols P (2017) *FEMS Microbiol Rev* 41:S71–S83
58. Zheng K, Ngo PD, Owens VL, Yang XP, Mansoorabadi SO (2016) *Science* 354:339–342
59. Zeer-Wanklyn CJ, Zamble DB (2017) *Curr Opin Chem Biol* 37:80–88