



Inactivation of NUPR1 promotes cell death by coupling ER-stress responses with necrosis

Patricia Santofimia-Castaño, Wenjun Lan, Jennifer Bintz, Odile Gayet, Alice Carrier, Gwen Lomberk, José Luis Neira, Antonio Gonzalez, Raul Urrutia, Philippe Soubeyran, et al.

► To cite this version:

Patricia Santofimia-Castaño, Wenjun Lan, Jennifer Bintz, Odile Gayet, Alice Carrier, et al.. Inactivation of NUPR1 promotes cell death by coupling ER-stress responses with necrosis. Scientific Reports, 2018, 8, 10.1038/s41598-018-35020-3 . hal-01947729

HAL Id: hal-01947729

<https://amu.hal.science/hal-01947729>

Submitted on 7 Dec 2018

HAL is a multi-disciplinary open access archive for the deposit and dissemination of scientific research documents, whether they are published or not. The documents may come from teaching and research institutions in France or abroad, or from public or private research centers.

L'archive ouverte pluridisciplinaire **HAL**, est destinée au dépôt et à la diffusion de documents scientifiques de niveau recherche, publiés ou non, émanant des établissements d'enseignement et de recherche français ou étrangers, des laboratoires publics ou privés.



Distributed under a Creative Commons Attribution 4.0 International License

SCIENTIFIC REPORTS

OPEN

Inactivation of NUPR1 promotes cell death by coupling ER-stress responses with necrosis

Patricia Santofimia-Castaño¹, Wenjun Lan¹, Jennifer Bintz¹, Odile Gayet¹, Alice Carrier¹, Gwen Lombert², José Luis Neira³, Antonio González⁴, Raul Urrutia², Philippe Soubeyran¹ & Juan Iovanna¹

It was already described that genetic inhibition of NUPR1 induces tumor growth arrest. In this paper we studied the metabolism changes after NUPR1 downregulation in pancreatic cancer cells, which results in a significant decrease of OXPHOS activity with a concomitant lower ATP production which precedes the necrotic cell death. We demonstrated that NUPR1 downregulation induces a mitochondrial failure with a loss of the mitochondrial membrane potential, a strong increase in ROS production and a concomitant relocation of mitochondria to the vicinity of the endoplasmic reticulum (ER). In addition, the transcriptomic analysis of NUPR1-deficient cells shows a decrease in the expression of some ER stress response-associated genes. Indeed, in ER stressors-treated cells with thapsigargin, brefeldin A or tunicamycin, a greater increase in necrosis and decrease of ATP content was observed in NUPR1-deficient cells. Finally, *in vivo* experiments, using acute pancreatitis which induces ER stress as well as NUPR1 activation, we observed that NUPR1 expression protects acinar cells from necrosis in mice. Importantly, we also report that the cell death observed after knocking-down NUPR1 expression is completely reversed by incubation with Necrostatin-1, but not by inhibiting caspase activity with Z-VAD-FMK. Altogether, these data enable us to describe a model in which inactivation of NUPR1 in pancreatic cancer cells results in an ER stress that induces a mitochondrial malfunction, a deficient ATP production and, as consequence, the cell death mediated by a programmed necrosis.

NUPR1 is a stress-inducible 82-aminoacids long, intrinsically disordered member of the AT-hook family of chromatin proteins. NUPR1 was first described as being activated in the exocrine pancreas in response to the cellular injury induced by pancreatitis¹, an inflammatory disease, which in its chronic form, behaves as a preneoplastic condition for pancreatic cancer. Subsequently, the inducible expression of *Nupr1* was discovered to be a surrogate of the stress response caused by many stimuli in most cell types² characterizing NUPR1 as a typical stress-associated chromatin protein. NUPR1 binds to DNA in a similar manner to other chromatin proteins^{3,4} so as to control the expression of gene targets⁵. At the cellular level NUPR1 participates in many cancer-associated process including cell-cycle regulation, apoptosis^{6,7}, cell migration and invasion⁸, and DNA repair responses⁹. Indeed, NUPR1 has recently elicited significant attention due to its role in promoting cancer development and progression in the pancreas^{5,10}. NUPR1-dependent effects also mediate resistance to anticancer drugs^{11–13}, an important characteristic of this malignancy. We^{8,14} and others^{15–19} have shown that genetic inactivation of *Nupr1* antagonizes the growth of tumors in several tissues, including pancreatic cancer⁸ thereby supporting a role for this protein as a promising therapeutic target for the development of therapies for pancreatic cancer. Congruently, using a comprehensive approach that combines biophysical, biochemical, computational, and biological methods for repurposing FDA approved drugs in the treatment of pancreatic cancer, we have recently identified that the phenothiazine derivative, trifluoperazine, mimics the effect of the genetic inactivation of NUPR1, revealing its

¹Centre de Recherche en Cancérologie de Marseille (CRCM), INSERM U1068, CNRS UMR 7258, Aix-Marseille Université and Institut Paoli-Calmettes, Parc Scientifique et Technologique de Luminy, Marseille, France. ²Division of Research, Department of Surgery and the Genomic Sciences and Precision Medicine Center, Medical College of Wisconsin, Milwaukee, USA. ³Instituto de Biología Molecular y Celular, Universidad Miguel Hernández, Edificio Torregaitán, Avda. del Ferrocarril s/n, 03202, Elche, Alicante, Spain. ⁴Cell Physiology Research Group, Department of Physiology, University of Extremadura, Cáceres, Spain. Correspondence and requests for materials should be addressed to J.I. (email: juan.iovanna@inserm.fr)

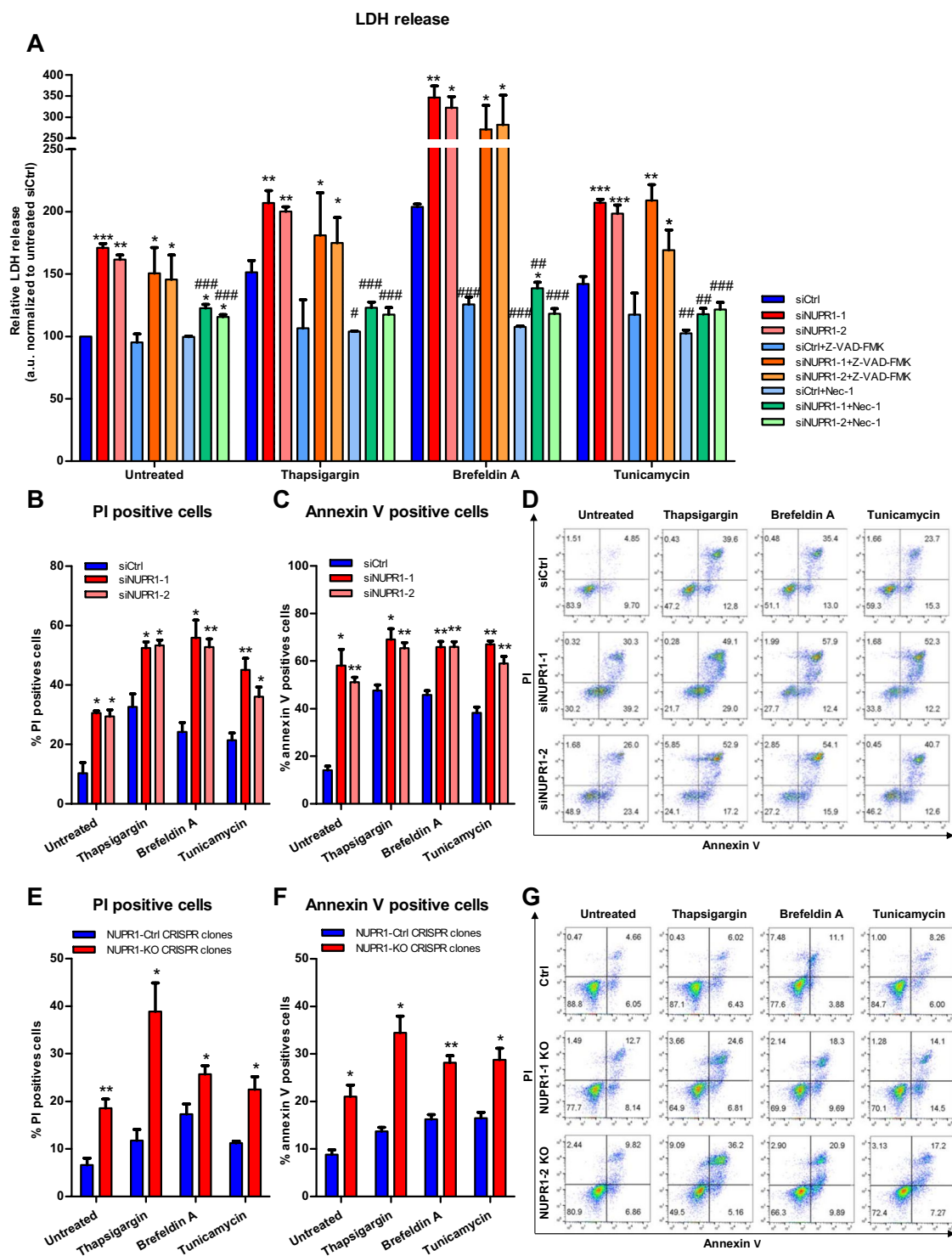


Figure 1. Nupr1 protects from cell death in stress situations *in vitro*. MiaPaCa2 cells were transfected with siCtrl or two different siNupr1 for 48 h. Cells were then incubated with thapsigargin, brefeldin A, or tunicamycin at 1 μ M, for another 24 h in the presence or not of Z-VAD-FMK 10 μ M or Nec-1 (40 μ M). LDH release was measured (A); data values were normalized to the untreated siCtrl. In transfected MiaPaCa2 cells, flow cytometry analysis of annexin-V and PI staining following 24 h of treatment with thapsigargin, brefeldin A, or tunicamycin, showing % of PI-positive cells (B), annexin V-positive cells (C) and a representative experiment of the dot plot profile of cells (D). Data are means of triplicates \pm SEM. For each treatment, statistically significant differences (* p < 0.05, ** p < 0.01, *** p < 0.001) compared to siCtrl with same treatment conditions (* p < 0.05, ** p < 0.01, *** p < 0.001) compared to non-pretreated cells with Z-VAD-FMK or Nec-1 with same ER-stressor treatment. Three Panc-1 control clones (with wild-type *NUPR1*) and 6 *Nupr1* knockout clones, developed using CRISPR-Cas9 technology, were cultured in DMEM and incubated with thapsigargin, brefeldin A, or tunicamycin at 1 μ M for 24 h. Flow cytometry analysis was carried out after Annexin-V and PI staining. The percentage of PI-positive cells

(E), annexin V-positive cells (F) and a representative experiment of the dot plot profile of cells was showed (G). Data are means of triplicates \pm SEM of 3 control and 6 *Nupr1* knockout clones. For each treatment, statistically significant differences (* $p < 0.05$, ** $p < 0.01$, *** $p < 0.001$) from control clones are shown.

anticancer properties²⁰. The current study was designed to better understand the mechanisms by which targeting NUPR1 results in its tumor growth-inhibiting effects. We focused on determining the specific intracellular pathways that result in cell death after *Nupr1* inactivation *in vivo* (*Nupr1*-deficient mice) and *in vitro* (knockdown by either siRNA or CRISPR-Cas9). We found that in NUPR1-deficient cells, glucose consumption was switched from OXPHOS towards glycolysis resulting in a significantly reduced ATP production that promoted a caspase-independent programmed necrotic process. This defect was due to a mitochondrial malfunction, which in turn resulted from a strong ER stress. This report constitutes the first demonstration that inactivation of NUPR1 antagonizes cell growth by coupling two pathobiological cell phenomena, namely ER-stress response and caspase-independent necrosis.

Results

Genetic down-regulation of NUPR1 induces pancreatic cell death by programmed necrosis. In several *in vitro* and *in vivo* models of pancreatic cancer, NUPR1 down-regulation inhibits the development and growth of this malignant tumor, highlighting the translational importance of this protein. However, the molecular mechanisms underlying these phenomena remain poorly understood. Previous work has demonstrated that *Nupr1* expression is rapidly and significantly induced by endoplasmic reticulum (ER) stress^{21,22}. We therefore, evaluated the role of NUPR1 during ER stress by inhibiting its expression in ER-stressed cells. To carefully define this phenomenon, ER stress on pancreatic cancer cells (MiaPaCa2) was induced by using brefeldin A, thapsigargin or tunicamycin in combination with decreasing of the levels of NUPR1 using two different siRNAs (Fig. S1A). Subsequently, the necrotic and the apoptotic effects were measured through LDH release and caspase 3/7 activity, respectively. We found that LDH release was significantly higher in NUPR1 siRNA-transfected cells than in control cells, both in non-treated and ER-stressor treated cells (Fig. 1A). Moreover, ER-stressors induced a significant increase of LDH release compared with untreated cells both in control cells and NUPR1-downregulated cells. Similarly, caspase 3/7 activity was also greater in NUPR1-depleted cells both in basal conditions and upon ER stress-induction (Fig. S2A). Combined, these experiments demonstrated that NUPR1 exerts both anti-apoptotic and anti-necrotic effects even in basal conditions, as well as during ER stress. Interestingly, pretreatment with the pan-caspase inhibitor, zVAD-FMK, did not prevent LDH release, as shown in Fig. 1A, indicating that the role of NUPR1 to counteract necrosis is independent of its anti-apoptotic mechanism. Interestingly, we also pre-treated cells with the programmed necrosis inhibitor Necrostatin-1 (Nec-1)²³ and we found a greater decrease of LDH release in control condition as well as in ER-stress conditions (Fig. 1A). We also used flow cytometry after co-labelling cells with Annexin V and PI to measure apoptosis and programmed necrosis, respectively, in genetically NUPR1-depleted cells after brefeldin A, thapsigargin or tunicamycin treatment. Transfection with siRNAs against NUPR1 increased apoptotic and necrotic events, both in untreated and ER stressor-treated cells as showed in Figs 1B,C and S2B, which is in line with the data obtained concerning caspase 3/7 activity and LDH release. Inactivation of the *NUPR1* expression in Panc-1 cells (Fig. S1B), using a CRISPR-Cas9 knockout strategy, we observed a lower growth rate (Fig. S1C). Upon co-labelling cells with Annexin V and PI to measure apoptosis and necrosis resulted in similar consequences named greater necrosis and apoptosis, in control condition and when cells were challenged to ER-stressors, as shown in Figs 1D,E and S2C. Congruently with that data, after reconstitution of NUPR1 expression in CRISPR-Cas9 knockout Panc-1 cells by transfecting a NUPR1-expression vector, cell viability was almost completely rescued (Fig. S3). Altogether, these data indicate that inactivation of NUPR1 increases the sensitivity of cells to apoptosis and to programmed necrosis, and that the necrotic process is independent of caspase 3/7 activation. Thus, this data demonstrate that cell death after inactivation of NUPR1 occurs by a combination of both, apoptotic and necrotic processes.

NUPR1 down-regulation decreases ATP production. Since the normal production and handling of ATP as both an energetic and signaling-associated molecule is vital for cells²⁴, we evaluated if ATP metabolism was implicated in the effects of NUPR1 down-regulation on programmed necrosis and apoptosis. Notably, we found that the levels of ATP were significantly reduced in cells transfected with siRNAs against *Nupr1*, in untreated and in ER-stressed cells (Fig. 2A). Moreover, ER-stressors induced a significant decrease of ATP content in control cells and NUPR1-downregulated cells compare with untreated cells. Again, inhibition of caspase 3/7 activity did not prevent this effect. On the other hands, upon inhibiting programmed necrosis by Nec-1 we found an almost total rescue of the ATP content in NUPR1-downregulated cells (Fig. 2A). We considered that the decrease in the intracellular ATP content might be the result of reduced efficiency of the mitochondrial metabolism or decreased substrate availability for synthesizing these molecules within the cells²⁵. To address this issue, we therefore evaluated the mitochondrial oxygen consumption rate (OCR) at basal conditions as well as after treatment with an inhibitor of ATP synthase, oligomycin²⁶, or a potent mitochondrial oxidative phosphorylation uncoupler, carbonilcyanide p-trifluoromethoxyphenylhydrazone (FCCP). Oligomycin treatment allowed the calculation of the OCR used by mitochondria exclusively for ATP production, while FCCP injection estimated the maximal respiration capacity of this organelle under stress situations. We measured the OCR in pancreatic cancer cells with *Nupr1* siRNA-mediated knockdown (Fig. 2B) or knockout by CRISPR-Cas9 (Fig. 2C), as well as in pancreatic acini obtained from *Nupr1*-KO and WT mice (Fig. 2D). Interestingly, compared with control cells, the OCR was strongly decreased in cells depleted of NUPR1 by siRNAs or CRISPR-Cas9-based knockout at basal respiration, as well as at the maximal respiration capacity (Fig. 2B,C). In addition, we found that the OCR was

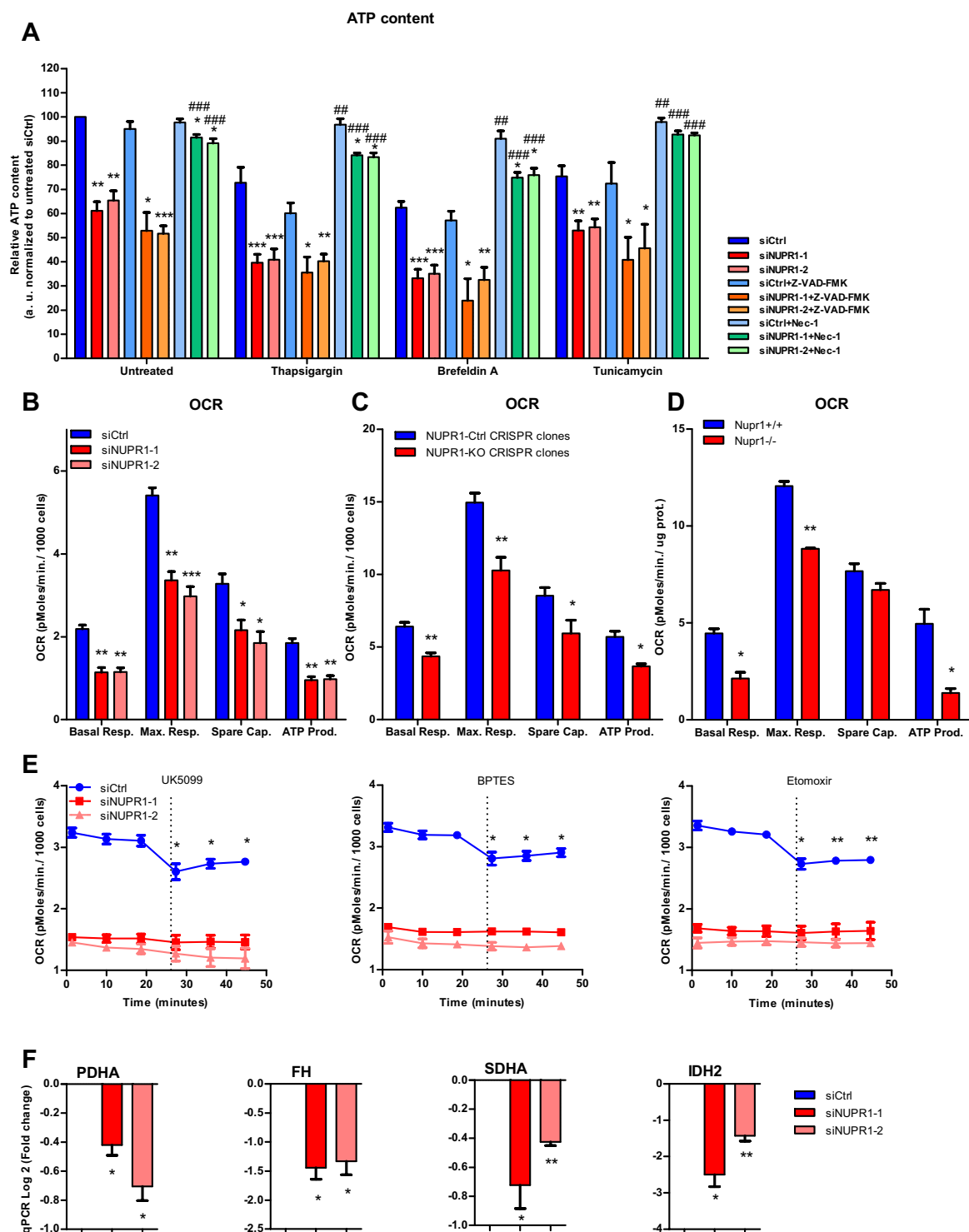


Figure 2. *Nupr1* deficiency induces a decrease in ATP production by OXPHOS suppression. MiaPaCa2 cells were transfected with siCtrl or two different siRNA against *Nupr1* for 48 h. Cells were then incubated with thapsigargin, brefeldin A, or tunicamycin at 1 μ M for another 24 h period in the presence or not of Z-VAD-FMK (10 μ M) or Nec-1 (40 μ M), and ATP production was measured (A); data values were normalized to the untreated siCtrl. Data are means of triplicates \pm SEM. For each treatment, statistically significant differences (* p < 0.05, ** p < 0.01, *** p < 0.001) compared to siCtrl with same treatment conditions (* p < 0.05, ** p < 0.01, *** p < 0.001) compared to non-pretreated cells with Z-VAD-FMK or Nec-1 with same ER-stressor treatment. Mitochondrial respiration reflected by oxygen consumption rate (OCR) levels was measured in MiaPaCa2 cells transfected with siCtrl, siNUPR1-1 or siNUPR1-2 for 72 h (B). Mitochondrial respiration was also measured in three clones of Panc-1 control cells (with wild-type *NUPR1*), and six clones of *Nupr1* knockout cells, developed by CRISPR-Cas9 technology. Data are means of triplicates \pm SEM of the 3 control and 6 knockout clones (C). Finally, we measured mitochondrial respiration in pancreatic acinar cells from WT (*Nupr1*^{+/+}) and

Nupr1^{-/-} mice (D). Only statistically significant differences (p values ≤ 0.05) were shown. The OCR was measured under basal conditions or following the addition of oligomycin, FCCP, or rotenone/antimycin A. The rates of OCR for basal respiration, maximal respiration, spare capacity, and ATP production were quantified as described in the Materials and Methods section. The OCR was again determined in MiaPaCa2 cells transfected with siCtrl, siNUPR1-1, or siNUPR1-2 when cells were challenged with UK5099, BPTES, or etomoxir; inhibitors of glucose oxidation, glutaminase, and carnitine palmitoyl-transferase 1 A, respectively (E). Total RNA was extracted to monitor the mRNA levels of the genes involved in the Krebs cycle using RT-qPCR (F). Data are means of triplicates \pm SEM. For each treatment, statistically significant differences (* $p < 0.05$, ** $p < 0.01$, *** $p < 0.001$) from siCtrl are shown.

drastically reduced in *Nupr1*-KO acini isolated from animals compared to those from WT mice (Fig. 2D). Then, in order to evaluate if the oxidation of any of the main fuels used by the mitochondria for ATP production, which are glutamine, fatty acids, and glucose, could be compromised in NUPR1-inhibited cells, we used the Mito Fuel Flex Test. Measurements were obtained of the OCR for the basal respiration by the cells, and subsequently, we inhibited glutamine, fatty acid, or glucose metabolism for mitochondrial ATP production with BPTES, etomoxir, and UK5099 respectively. A decrease in the OCR after these methods of inhibition would indicate that the cells were metabolizing the substrate. Indeed, we found that after the injection of any of these three inhibitors, there was a decrease in the OCR in control cells (Fig. 2E). In contrast, in NUPR1-depleted cells, after the inhibition of the glutamine, fatty acid, or glucose oxidation, mitochondrial OCR was not modified as shown in Fig. 2E. These results indicate that mitochondria are not appropriately oxidizing these substrates to generate ATP in the absence of NUPR1. Congruent with these results, we found that the expression of distinct enzymes involved in the tricarboxylic acid cycle, such as *SDHA*, *FH*, *PDHA*, and *IDH2*, was significantly downregulated in NUPR1-depleted cells as presented in Fig. 2F. Since O_2 -dependent ATP production is inefficient in NUPR1-deficient cells, we evaluated the energy production by anaerobic glycolysis, measured as the extracellular acidification rate (ECAR) by the proton efflux into the media during lactate release. These experiments demonstrated that the ECAR increased under basal glycolysis and during inhibition of mitochondrial respiration after oligomycin treatment (glycolytic capacity) in NUPR1-depleted cells (Fig. 3A), thereby resulting in lower cellular reserves of glucose. An increase in ECAR values was also observed with CRISPR-Cas9 knockout *Nupr1* cells, as shown in Fig. 3B, corroborating this effect. Furthermore, in pancreatic acini obtained from *Nupr1*-KO and WT mice, we found that *Nupr1*^{-/-} acini used more anaerobic glycolysis than WT, with a consequent reduction in the intracellular reserve of glucose (Fig. 3C). This observation was also confirmed by directly measuring lactate release into the culture media of NUPR1-deficient cells (Fig. 3D). We also detected a significant increase in glucose uptake in NUPR1-deficient cells (Fig. 3E), whereas glutamine uptake remained unchanged (Fig. 3F). Finally, measuring the OCR and the proton production rate by cells in the extracellular medium showed a rate of ATP production by glycolysis in control cells of 14.63 ± 1.30 pmoles/min/1000 cells, which represented 12.67% of the total ATP produced. For the siNUPR1-1- and siNUPR1-2-transfected cells, the rate was 22.75 ± 1.59 and 22.26 ± 0.80 , respectively, which represented 32.43% and 30.74% of the total ATP production (Fig. 3G). Accompanying these events, we also found that several genes involved in glycolysis, such as *PDK*, *GPI*, *TPI*, *PGK1*, and *PGAM1*, increased their expression (Fig. 3H). Taken together, these results strongly support a model whereby, under NUPR1 deficiency, the ATP production by glucose is switched towards glycolysis due to OXPHOS failure. However, glycolysis is less efficient in terms of ATP production than OXPHOS, and therefore, the glucose reserve is rapidly consumed. Thus, NUPR1-depleted cells are limited by intracellular ATP availability, which contributes to the triggering of cell death by programmed necrosis.

NUPR1 down-regulation alters the function and localization of mitochondria. The results described above demonstrate that NUPR1 down-regulation induces a defect in mitochondrial OXPHOS activity, which is evidenced by the strong decrease in O_2 consumption and ATP production, even if the cell attempts to compensate by activating the production of ATP through glycolysis. Consequently, we further evaluated the normal functioning of the mitochondria in cells in which NUPR1 had been genetically inactivated. First, we evaluated the proton gradient by measuring the membrane potential using the Mito ID system. In mitochondria, proton gradients generate a chemiosmotic potential known as the proton motive force which is used for the synthesis of ATP by OXPHOS, Ca^{2+} uptake, and antioxidant defense. The measurement of the chemiosmotic potential is a key indicator of mitochondrial and cell health or injury. In NUPR1-depleted cells, we found a significant depolarization of the mitochondrial membrane which is reflected by a decrease in the fluorescence of dye, as presented in Fig. 4A,B, which explains, at least in part, the observed defect in ATP production. We then measured superoxide anion production by the mitochondria using the MitoSOX reagents, by both fluorescent microscopy and flow cytometry. These studies are important since superoxide anion generation by mitochondria triggers oxidative damage and contributes to retrograde redox signaling from the organelle to the rest of the cell. In this regard, both flow cytometry and fluorescence microscopy showed a significant increase in the intracellular levels of superoxide anions in NUPR1-deficient cells (Fig. 4C,D). Thus, these experiments clearly demonstrate that NUPR1 down-regulation affects the function of mitochondria, which explains the impact on ATP metabolism described above. The cellular distribution of mitochondria was analyzed in NUPR1-deficient cells using the MitoTracker Deep Red reagent counterstained with Alexa Fluor 488 phalloidin for cytoplasm and DAPI staining for the nucleus. The images shown that in NUPR1-downregulated cells the mitochondria remained localized in a limited perinuclear region, whereas in control cells mitochondria were more homogeneously localized throughout the cytoplasm as a structured network (Fig. 5A). Transmission electron microscopy analysis of the mitochondria confirmed their limited perinuclear localization and the absence of significant

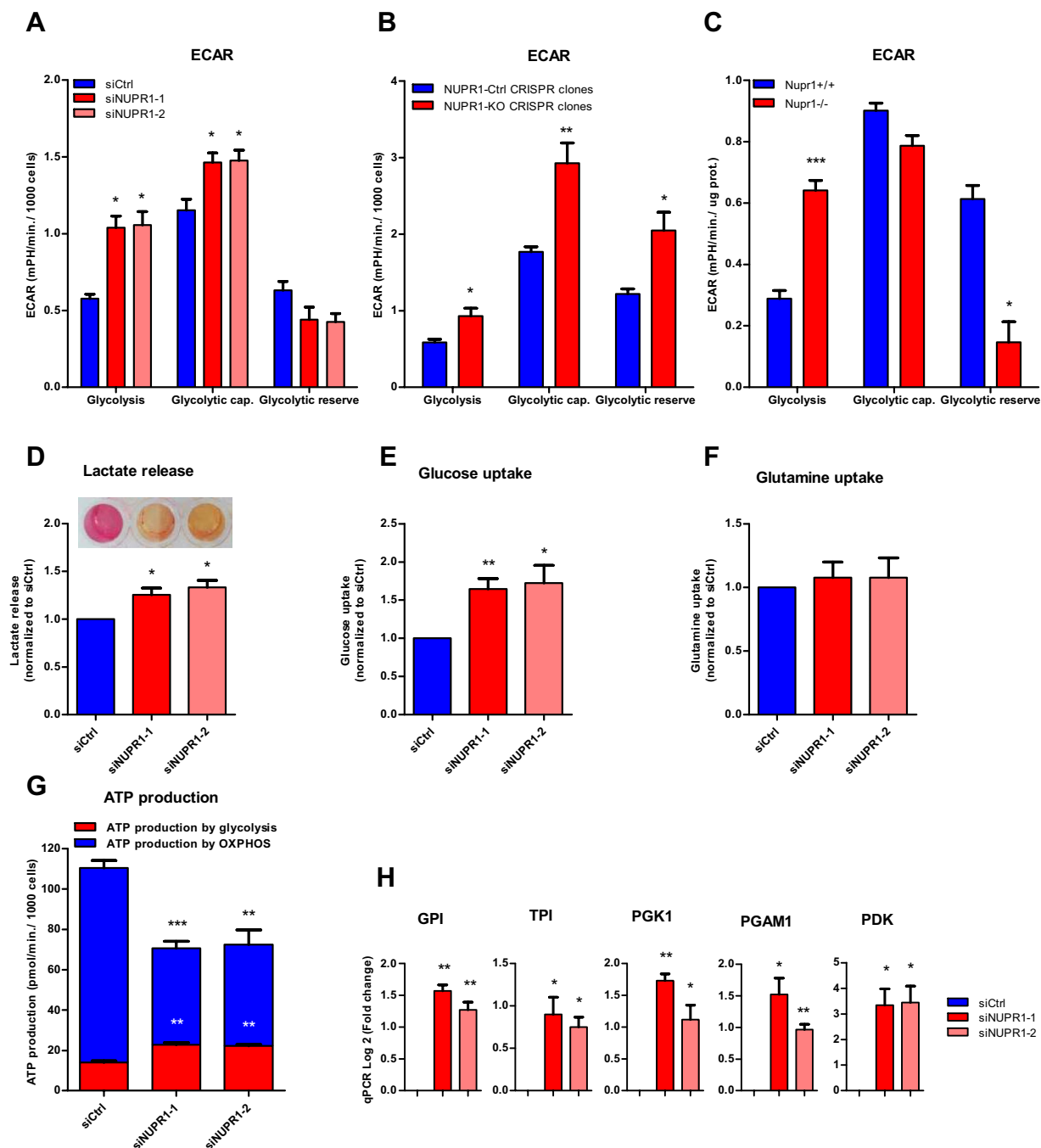


Figure 3. *Nupr1* deficiency promotes anaerobic glycolytic metabolism. Extracellular acidification rate (ECAR) levels were measured in MiaPaCa2 cells transfected with siCtrl, siNUPR1-1, or siNUPR1-2 for 72 h (A). The ECAR was measured in three clones of Panc-1 control cells (with wild-type *Nupr1*) and six clones of *Nupr1* knockout cells, developed by CRISPR-Cas9 technology. Data are means of triplicates \pm SEM of three control and six knockout clones (B). Statistically significant differences from Panc-1 control cells with p values ≤ 0.05 are shown. Also, the ECAR was measured in pancreatic acinar cells from WT (*Nupr1*^{+/+}) and *Nupr1*^{-/-} mice (C). The ECAR was measured under basal conditions or following the addition of glucose, oligomycin, or 2-Deoxyglucose. The rates of ECAR for glycolysis, glycolytic capacity, and glycolytic reserve were quantified as described in the Materials and Methods section. Lactate release (D), glucose (E) and glutamine (F) uptake and were measured in the extracellular medium after 24 h in culture. A representative image of DMEM collected after 72 h of culture is shown (D). ATP production by OXPHOS and anaerobic glycolysis were determined by the OCR and proton production rate, respectively (G); data values were normalized to the siCtrl. Total RNA was extracted to monitor mRNA levels of the genes involved in glycolysis using RT-qPCR (H). Data are means of triplicates \pm SEM. For each treatment, statistically significant (* $p < 0.05$, ** $p < 0.01$, *** $p < 0.001$) differences from siCtrl (A, D–H), Ctrl CRISPR clones (B) or *Nupr1*^{+/+} mice (C) are shown.

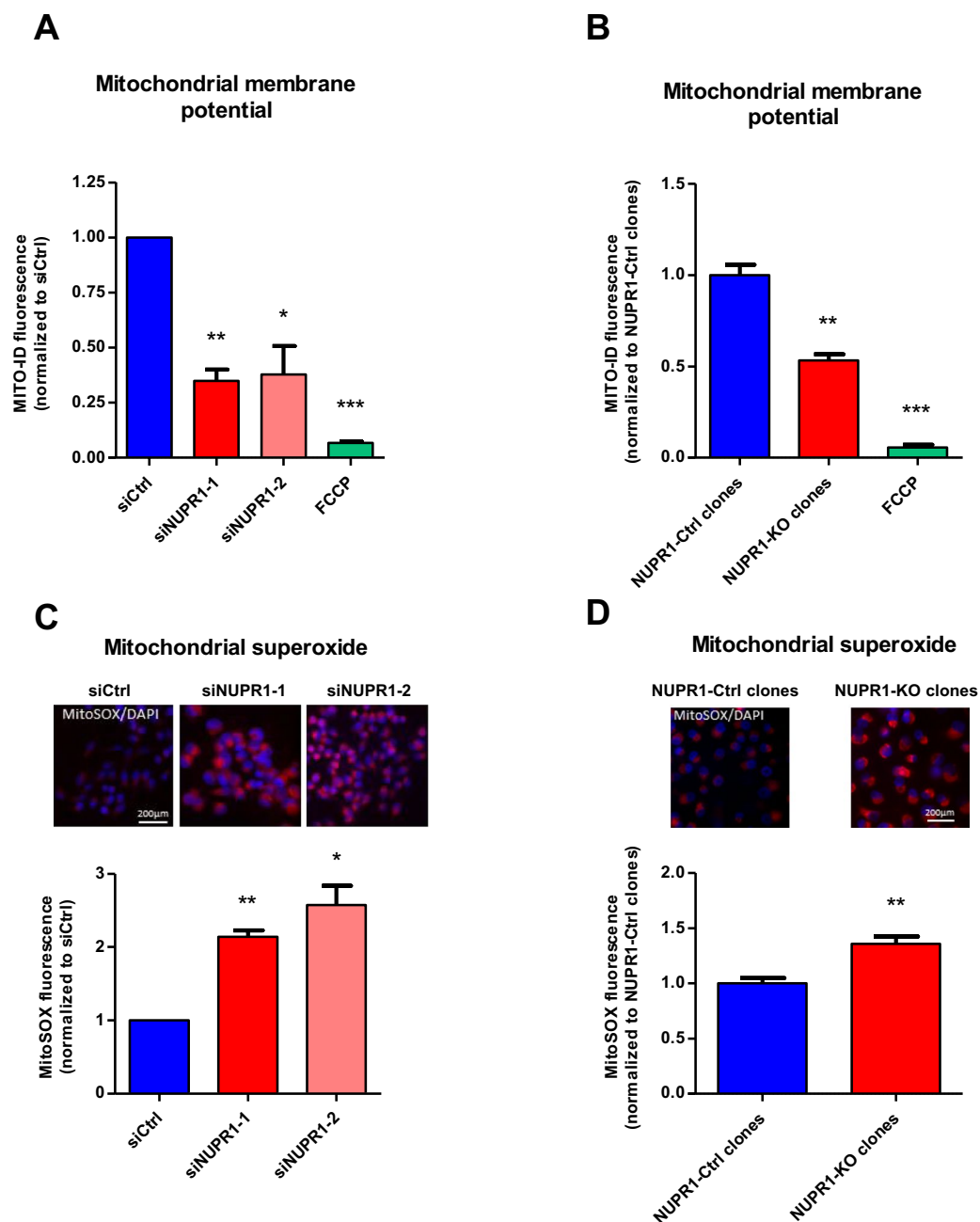


Figure 4. *Nupr1* deficiency leads to a mitochondrial membrane potential disruption inducing ROS overproduction. Flow cytometry analysis of MiaPaCa2 cells transfected with siCtrl, siNUPR1-1, or siNUPR1-2 for 72 h was carried out using MITO-ID for analysis of the mitochondrial membrane potential (A). MITO-ID was also applied to three clones of Panc-1 control cells (with wild-type *NUPR1*) and six clones of *Nupr1* knockout cells, developed by CRISPR-Cas9 technology. Data are means of triplicates \pm SEM of the 3 control and 6 knockout clones (B). ROS production was detected using MitoSOX Red by flow cytometry analysis in the experimental cell groups as described above (C,D). Representative images of the fluorescence microscopy of both ROS indicators are shown (C,D). Data are means of triplicates \pm SEM. Statistically significant differences from siCtrl (* $p < 0.05$, ** $p < 0.01$, *** $p < 0.001$) was shown.

ultrastructural changes of the organelle (Fig. 5B). Through these experiments, we found no apparent change in the overall number of mitochondria in NUPR1-deficient cells (Fig. 5C). However, these techniques revealed that mitochondria of the NUPR1-deficient cells were almost always associated with the ER, which was enlarged, as often observed during ER stress (Fig. 5D). We therefore sought to gain insight into whether this observation indeed indicated that *Nupr1*-deficient cells were undergoing ER stress by measuring intracellular Ca^{2+} concentration using flow cytometry. Indeed, one of the most typical features of ER stress is the massive Ca^{2+} release from the stressed ER to the cytoplasm, which causes Ca^{2+} to move from the ER to mitochondria. We found a considerable increase in this parameter with values that resemble those found in our positive controls of ER

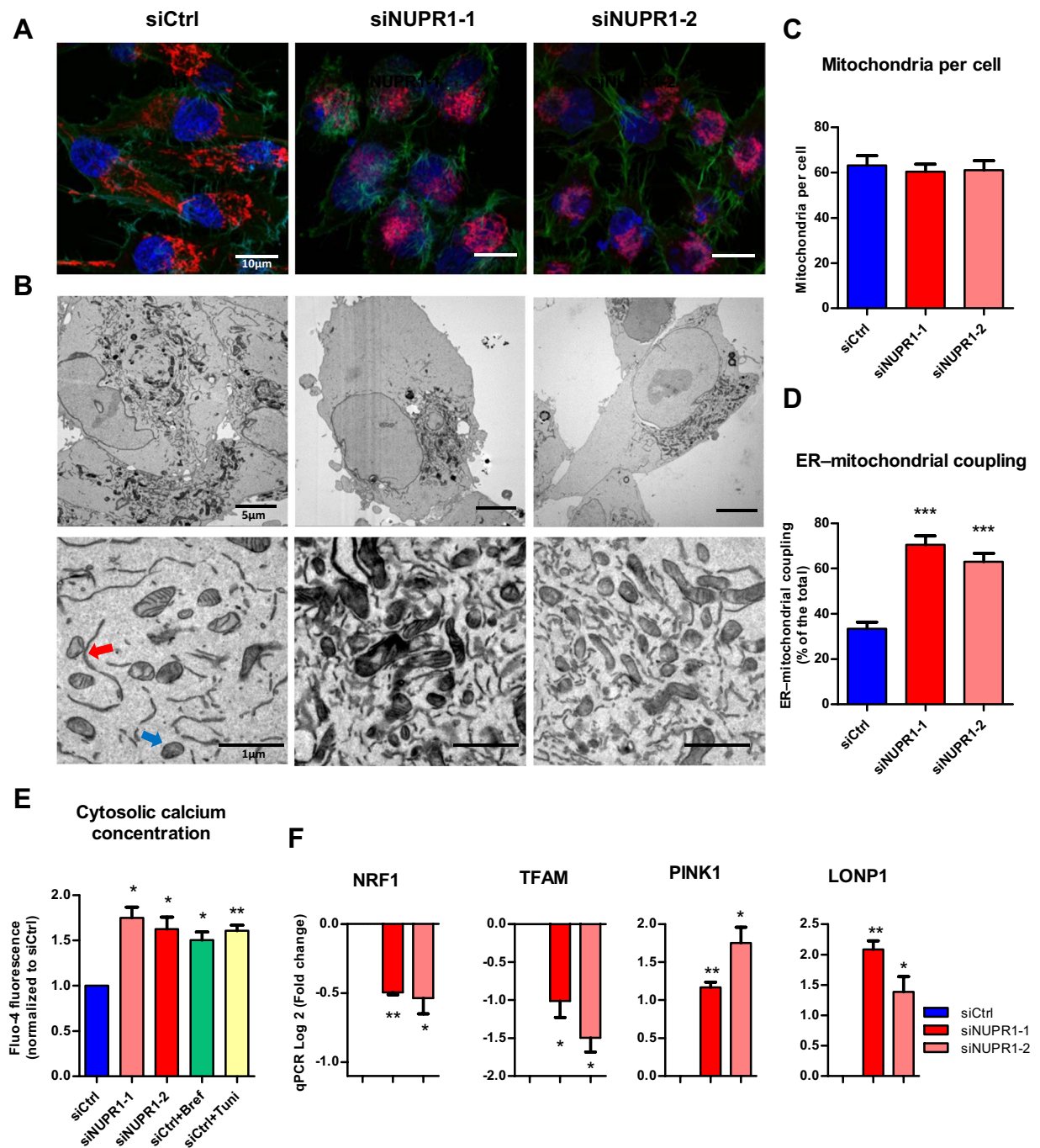


Figure 5. Malfunction of mitochondria in NUPR1-deficient cells. MiaPaCa2 cells transfected with siCtrl, siNUPR1-1 or siNUPR1-2 for 72 h were loaded with the mitochondrial selective probe MitoTracker Deep Red FM and, after fixation, marked with Alexa Fluor 488 Phalloidin and DAPI (**A**). Representative transmission electron microscopy images with different magnifications of the cells are shown. ER-mitochondrial contact or not are indicated by red or blue arrows, respectively (**B**). Mitochondria number per cell was evaluated counting them in transmission electron microscopy images; not less than 12 cells were counted for each condition (**C**). The percentage of mitochondria with ER contacts per field (mean of 10 fields) for each condition is shown; not less than 250 mitochondria were counted (**D**). Flow cytometry analysis was carried out using Fluo-4-AM for analysis of the cytosolic calcium concentration (**E**). Total RNA was extracted to monitor mRNA levels of the genes involved in the mitochondrial dynamic (**F**). Data are means of triplicates \pm SEM. Statistically significant differences from siCtrl (* $p < 0.05$, ** $p < 0.01$, *** $p < 0.001$) was shown.

Ca^{2+} release, namely brefeldin A- or tunicamycin-treated cells (Fig. 5E). The sum of uncontrolled production of oxygen radicals and Ca^{2+} cycling in the cell causes mitochondrial uncoupling and outer membrane permeabilization, ending with the release of intermembrane space proteins, including cytochrome c. In agreement with our

MiaPaCa2 treated with siNUPR1			
Pathway ID	Biological process	Downregulated genes	FDR
GO:0006986	Response to unfolded protein	30	7.53e-40
GO:0006457	Protein folding	28	1.1e-32
GO:0030968	Endoplasmic reticulum unfolded protein response	17	1.55e-19
GO:0006446	Regulation of translational initiation	13	2.95e-15
GO:0034976	Response to endoplasmic reticulum stress	16	9.98e-14
GO:0006984	Er-nucleus signaling pathway	8	1.48e-10
GO:0036500	Atf6-mediated unfolded protein response	6	1.48e-10
GO:0036499	Perk-mediated unfolded protein response	6	1.33e-09
GO:0061077	Chaperone-mediated protein folding	8	2.17e-09
GO:0006950	Response to stress	32	5.97e-06
GO:0036498	Ire1-mediated unfolded protein response	6	2.14e-05
NUPR1 ^{-/-} mice			
Pathway ID	Biological process	Downregulated genes	FDR
GO:0034976	Response to endoplasmic reticulum stress	10	7.73e-12
GO:0006986	Response to unfolded protein	7	6.82e-09
GO:0006457	Protein folding	7	6.81e-07
GO:0030968	Endoplasmic reticulum unfolded protein response	5	1.94e-06
GO:0044267	Cellular response to unfolded protein	5	2.15e-06
GO:0006950	Response to stress	12	0.00255

Table 1. Nupr1-deficiency induces a downregulation of the ER stress-associated pathways *in vitro* and *in vivo*.

previous data, measuring of cytochrome c release in NUPR1-depleted cells shown was greater compared to control cells (Fig. S4A). In this regard, the members of the Bcl-2 family proteins play an important role are classified in two subfamilies with antagonistic functions: the Bcl-2-like survival factors and the Bax-like death factors. In our results, we found that upon NUPR1 downregulation, the expression of Bcl-2-like survival factors like *BCL-2*, *MCL1* and *BCLXL* shown non-significant differences compared with control cells. On the other hand, Bax-like death factors such as *BAX* and *BAK1* were overexpressed after NUPR1 depletion (Fig. S4B). Concomitantly, we found a significant downregulation in the expression of two genes: *TFAM*, which encodes a key mitochondrial transcription factor that functions in mitochondrial DNA replication and repair, and *NRF1*, which encodes a transcription factor that activates expression of nuclear genes required for respiration and mitochondrial DNA transcription and replication (Fig. 5F). In contrast, expression of *LONP1*, a gene encoding a mitochondrial protease involved in the selective degradation of misfolded, unassembled, or oxidatively damaged polypeptides in the mitochondrial matrix, and *PINK1*, a gene encoding for a serine/threonine protein kinase that is thought to protect cells from stress-induced mitochondrial dysfunction, were overexpressed (Fig. 5F). Altogether, these results reveal a malfunction and abnormal subcellular distribution of mitochondria which may be due to the massive Ca^{2+} release from the stressed ER in NUPR1-deficient cells.

NUPR1 down-regulation induces failures in ER stress response. *Nupr1* expression is strongly induced in response to ER stress, but its role in ER stress response, if any, remains to be established. In fact, the ER stress response is accompanied by the activation of several ER stress-associated genes²⁷, with unknown roles in this process for some of them. We therefore evaluated the role of NUPR1 in the ER stress response using several complementary approaches. The transcriptome of the MiaPaCa2 cells treated with a siRNA against *Nupr1* revealed a downregulation of several genes involved in ER stress-associated pathways when analyzed by both the Ingenuity Pathways Analysis (<http://www.ingenuity.com/>) and STRING²⁸ bioinformatics tools. The most significant biological pathways identified as inefficiently activated in NUPR1-deficient cells were: the response to unfolded protein (30 mRNA downregulated, FDR 7.53e-40), protein folding (28 mRNA downregulated, FDR = 1.1e-32), the ER unfolded protein response (17 mRNA downregulated, FDR = 1.55e-19), regulation of translational initiation (13 mRNA downregulated, FDR = 2.95e-15), response to ER stress (16 mRNA downregulated, FDR 9.98e-14), the ER-nucleus signaling pathway (8 mRNA downregulated, FDR = 1.48e-10), the ATF6-mediated unfolded protein response (6 mRNA downregulated, FDR = 1.48e-10), the PERK-mediated unfolded protein response (6 mRNA downregulated, 1.33e-09), chaperone-mediated protein folding (8 mRNA downregulated, FDR = 2.17e-09), response to stress (32 mRNA downregulated, FDR = 5.97e-06), and the IRE1-mediated unfolded protein response (6 mRNA downregulated, FDR = 2.14e-05) (see Tables 1 and S1). These experiments, designed to directly evaluate the effects of NUPR1 in exocrine pancreatic cells, demonstrate

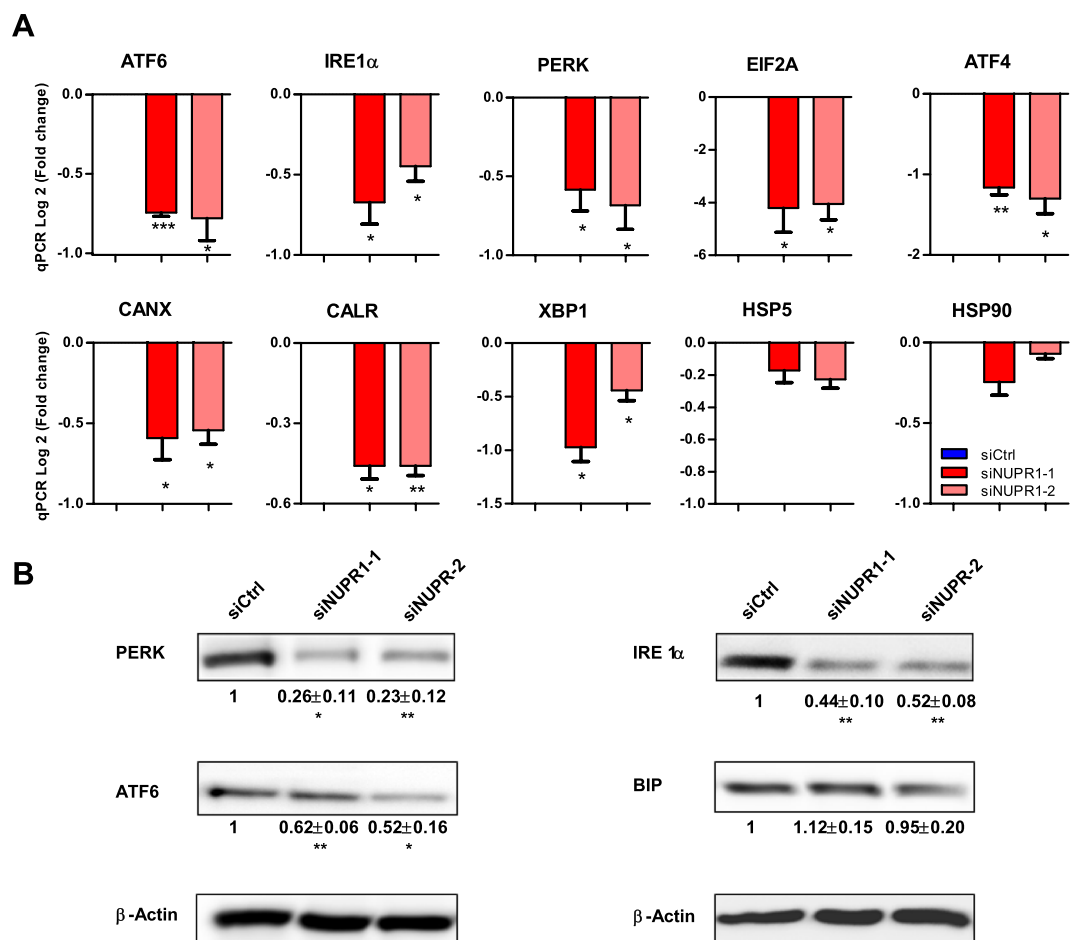


Figure 6. *NUPR1* deficiency induces a decrease in the expression of ER stress genes. Total RNA was extracted from MiaPaCa2 cells transfected with siCtrl, siNUPR1-1 or siNUPR1-2 for 72 h to evaluate the mRNA levels of the genes involved in ER stress response using RT-qPCR (A). Western blot analysis was performed to evaluate protein levels of expression of IRE1 α , ATF6, PERK and BIP in NUPR1-depleted cells. Data are means of triplicates \pm SEM. Statistically significant differences from siCtrl (* p < 0.05, ** p < 0.01, *** p < 0.001) was shown.

that gene expression networks associated to ER stress are among the top pathways associated with expression changes under these conditions. To confirm these experiments *in vivo*, we made use of the *Nupr1*-KO mice model. Interestingly, transcriptomic analysis of pancreas from these mice analyzed using the same bioinformatics tools, also revealed an inefficiency in the ER stress response, for some of these biological processes, such as: the response to ER stress (10 mRNA downregulated, FDR = 7.73e-12), response to unfolded protein (7 mRNA downregulated, FDR 6.82e-09), protein folding (7 mRNA downregulated, FDR = 6.81e-07), ER unfolded protein response (5 mRNA downregulated, FDR = 1.94e-06), cellular response to unfolded protein (5 mRNA downregulated, FDR = 2.15e-06), and response to stress (12 mRNA downregulated, FDR = 0.00255) (see Tables 1 and S2). Thus, these results from our animal model, combined with those obtained in cells, show that NUPR1 deficiency mounts an inefficient ER stress response.

Subsequently, we measured the expression of several genes involved in controlling the ER stress response, in NUPR1-depleted MiaPaCa2 cells, the ER sensors: ATF6, IRE1 α , PERK, as well as ER downstream effectors and target: EIF2A, XBP1, ATF4, CANX, CALR, CHOP, HERPUD1, EDEM1, HSP90B1, GADD34, HSPA5 and HSP90 by RT-qPCR. Notably, some of these genes demonstrated significantly decreased expression in the absence of NUPR1 expression although not GADD34, HSPA5 (BIP) and HSP90 (Fig. 6A). In addition, expression of ATF6, IRE1 α , PERK and BIP proteins was also measured by western blot on the siNUPR1-1- and siNUPR1-2-treated MiaPaCa2 cells. Interestingly, whereas levels of ATF6, IRE1 α and PERK were decreased in NUPR1-depleted cells, BIP protein levels remained unaffected in strong correlation with its mRNA (Fig. 6B). Altogether, these data suggest that expression of NUPR1 is necessary for an optimal ER stress response, which occurs, at least in part, through control of these genes at the transcriptional level. Therefore, when NUPR1 is down-regulated, the ER stress response is suboptimal, with dramatic consequences on mitochondrial function and a strong deficit in ATP production, and as main consequence, cell death by programmed necrosis is induced.

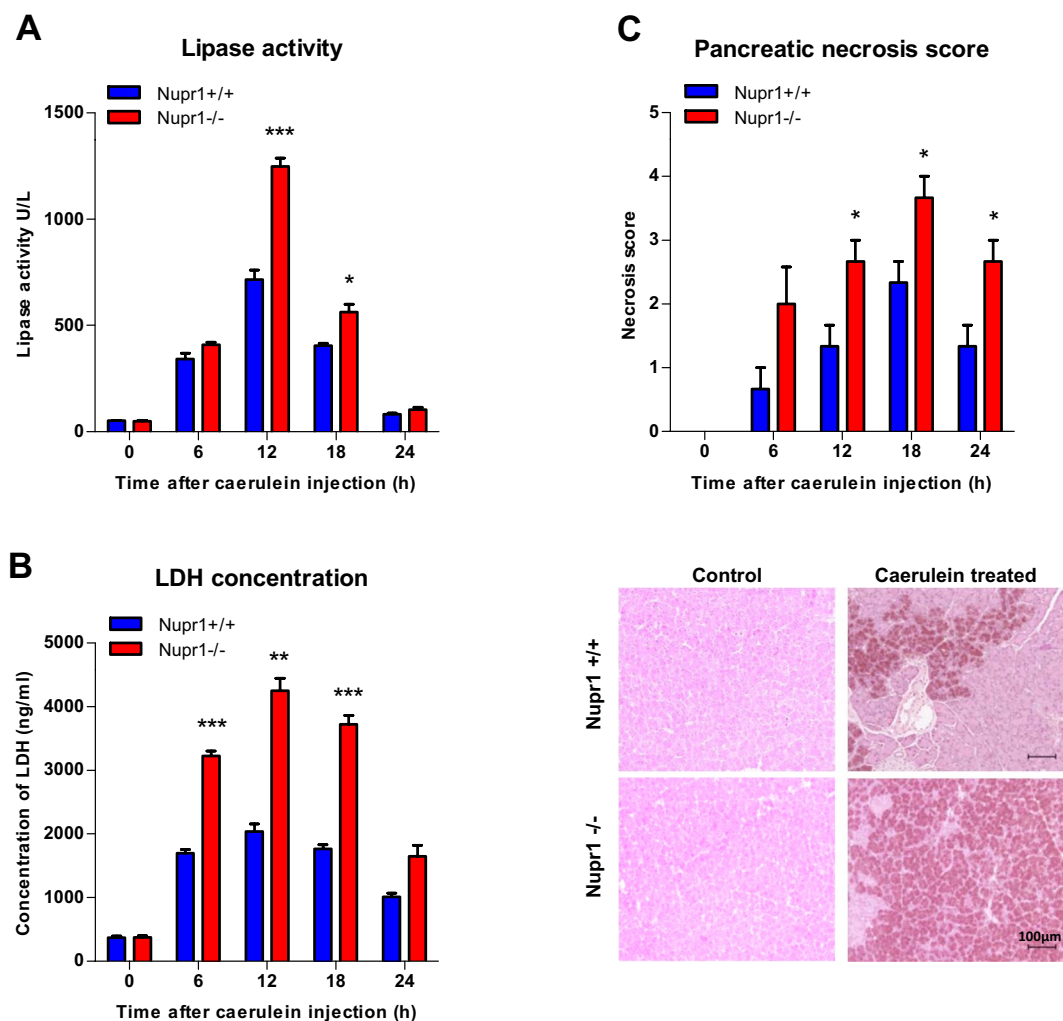


Figure 7. Nupr1 protects from pancreatitis-induced cell death. Serum lipase (A) and LDH (B) levels were measured in control Nupr1^{+/+} and Nupr1^{-/-} mice at 6, 12, 18, and 24 h following caerulein-induced acute pancreatitis. The necrosis score (C) was evaluated in histologic sections of pancreases and it refers to ranges of the percentages of cells involved: 0 = 0–5%; 1 = 5–15%; 2 = 15–35%; 3 = 35–50%; 4 ≥ 50%. Histological pictures of the pancreases by H&E staining at 0 and 18 hours post-induction of pancreatitis are shown. Data are means of triplicates ± SEM. For each treatment, statistically significant differences (* $p < 0.05$, ** $p < 0.01$, *** $p < 0.001$) from Nupr1^{+/+} mice are shown.

NUPR1 expression protect acinar cells of necrosis in mice with acute pancreatitis. During the course of pancreatitis, there is a sustained ER stress and pathological calcium signaling²⁹. Thus, we analyzed the effects of NUPR1 down-regulation on cell death induced by experimental pancreatitis in *Nupr1-knockout* (KO) and WT mice. As shown in Fig. 7A,B, we found that acute pancreatitis, induced by repeated injections of caerulein, resulted in a higher serum concentration of lipase (i.e.: 1248 ± 39 U/L and 715 ± 45 U/L after 12 h of induction in KO and WT mice respectively; $p = 0.0009$) and lactate dehydrogenase (LDH) (i.e.: 4247 ± 198 ng/ml and 2034 ± 119 ng/ml after 12 h of induction in KO and WT mice respectively; $p = 0.002$). Congruent with a role of NUPR1 in cell death by necrosis in acute pancreatitis, *Nupr1-KO* mice displayed a higher necrosis as well as necrotic score when compared with wild type littermates (Fig. 7C). Thus, this *in vivo* experiment demonstrates that normal levels of NUPR1 are necessary for protecting pancreatic cells from necrotic cell death.

Discussion

The current study significantly contributes to a better understanding of mechanisms underlying the regulation of cell death by the cancer-associated protein, NUPR1. Our data support the idea that NUPR1 activation is strongly involved in protecting the cell against programmed cell death by both apoptosis and programmed necrosis, and therefore, targeting NUPR1 protein in cancer appears to be a promising tool as an anticancer therapeutic strategy. Several empiric observations have shown that cancer cells undergo growth arrest or cell death after genetic inactivation of NUPR1 *in vitro* and *in vivo*^{8,14–18}. However, to date, the mechanisms responsible for the biological consequences of its inactivation in cancer cells remain poorly understood. In this work, we used a battery of complementary methodological approaches to study these mechanisms, including *Nupr1-KO* mice, two siRNA

sequences and CRISPR-Cas9 to inhibit NUPR1 expression with systematically concordant results. We demonstrate that the down-regulation of *Nupr1* in pancreatic cells promotes a cascade of events with several important consequences. NUPR1 down-regulation prevents pancreatic cells from properly ER stress response, through the inappropriate expression of several ER stress-associated genes leading to a programmed cell death. Moreover, cell death is induced by metabolic changes resulting in lower ATP production, higher consumption of glucose and a partial switch from OXPHOS to glycolysis due to a mitochondrial failure.

Mitochondria and ER form structural and functional networks (mitochondria-associated ER membranes (MAMs)) essential to maintain cellular homeostasis and determine cell fate under stress conditions. Ca^{2+} is transferred from the ER to the mitochondria and this process is very important to activate prosurvival/pro-death pathways³⁰. In this regard, we found that NUPR1 inactivation triggers a massive release of Ca^{2+} from the ER to the cytosol and we also observed a perinuclear relocalization of mitochondria to the vicinity of the ER in NUPR1-deficient cells. However, this adaptive attempt of the mitochondrial network to counteracted the increased Ca^{2+} concentration in the cytoplasm, which as shown previously³¹, leads to an increased mitochondrial Ca^{2+} concentration, disruption of mitochondrial membrane potential, leak of electrons from the respiratory chain in the complexes I and III³², ultimately resulting in a ROS accumulation, cytochrome c release, and, most importantly, in lower ATP generation. The low level of ATP production by NUPR1-deficient cells seems to be partially compensated by switching the remaining glucose consumption to anaerobic glycolysis. Currently, the consensus in the cancer metabolism field is that mitochondrial metabolism is totally required for tumor growth tumor. In cancer cells, mitochondria are important providers of energy and building blocks for tumor anabolism, also control redox and calcium homeostasis, participate in transcriptional regulation, and govern cell death³³. Notably, loss of function in genes encoding OXPHOS enzymes, make these cancer cells switch on glycolysis for ATP production³⁴ as well as when mitochondrial respiratory inhibitors, like rotenone or FCCP, or drugs like phenformin are used, they stimulate lactate production, what impose an energetic stress on cancer cells and suppress the cell growth^{35,36}. Thus, mitochondria constitute a promising target for anticancer therapies. In this regard, after NUPR1 inhibition we observed a mitochondrial metabolism failure and mitochondrial dysfunctions and cancer cells switch on glycolysis for energy production. However, this adaptive response in NUPR1-deficient cells is insufficient to survive and therefore a metabolic cell death ensues. Moreover, we previously demonstrated that deficiency in NUPR1 expression results in induction of cellular cannibalism³⁷ and autophagy³⁸ processes. In light of the results from the current study, it is tempting to speculate that both cannibalism and autophagy could serve to generate energy fuel in NUPR1-deficient cells to compensate for the ATP deficiency. In addition, since intracellular ATP deficiency is accompanied by an increase in AMP and therefore activation of AMPK, it is possible that this kinase signals the initiation of the autophagy³⁹ and cellular cannibalism processes⁴⁰.

A metabolism-associated role of NUPR1 was previously suggested in hepatocellular carcinoma, in which expression of *Nupr1* is induced in response to the mitochondrial malfunction, and consequently, NUPR1 overexpression favors cancer progression^{41,42}. In addition, it was also demonstrated that NUPR1 overexpression is necessary in the liver for an optimal response to a non-essential aminoacids-deficient diet and in pancreatic cancer cells to a starved culture media^{5,43}. Based on these observations, we can assume that overexpression of NUPR1 operates to improve mitochondrial function to produce a maximum of energy in the presence of low substrates under stressed conditions. Moreover, cell death after NUPR1 depletion is driven by apoptosis and mainly programmed necrosis due to the lack of ATP. Furthermore, when NUPR1-deficient cells were challenged to ER-stressor, they were more sensitive to these treatments increasing both apoptosis and necrosis. ER stress is widely reported to induce caspase-dependent apoptotic cell death but ER stress induction by chemical triggers such as brefeldin A, thapsigargin and tunicamycin also induce regulated necrosis⁴⁴. Importantly, only inhibition of programmed necrosis by Nec-1 (but not with apoptotic inhibitor) rescued NUPR1-depleted cells and increased the ATP content. In this regard NUPR1 plays an important role protecting cells from ER-stress programmed cell death, mediating a pro-survival response by a transcriptional activation of genes encoding ER-stress sensors and effectors.

Previous investigations in our team described NUPR1 as a protective factor against pancreatitis-induced lesions by activating expression of the anti-inflammatory factor pancreatitis associated protein I (also known as PAPI or Reg3beta)⁴⁵, in part through regulating its transcriptional activation. In turn, PAPI/Reg3beta inhibits the activation of NFkappaB in macrophages and therefore acts as a powerful anti-inflammatory factor⁴⁶. Consequently, the anti-inflammatory effect of NUPR1 could be explained through the activation of the PAPI/Reg3beta. Surprisingly, in this work we are demonstrating that experimental pancreatitis induced in NUPR1-deficient mice results in a significant increase in programmed necrosis as indicated by the greater release of LDH, amylase and lipase in blood during the acute phase of the disease and by the significant increased necrotic score. Altogether, these results strongly suggest that induction of NUPR1 during acute pancreatitis controls both, inflammation and necrosis, by two different and complementary mechanisms.

In conclusion, this current work demonstrates that, in NUPR1-deficient cells, there is a decrease in ATP production and glucose consumption is switched towards glycolysis instead of OXPHOS. This defect is due to a mitochondrial malfunction, coupled with a deficient ER stress response. This cascade of processes promotes programmed cell death, what makes NUPR1 an interesting target for cancer treatment.

Materials and Methods

Animals. *Nupr1*^{-/-} mice bear a homozygous deletion of exon 2 and have been reported previously⁴⁷. The *Pdx1-Cre*; *LSL-Kras*^{G12D} mice were provided by R. Depinho (Dana-Faber Cancer Institute, Boston, Massachusetts, USA) and resulted from crossbreeding of the *Pdx1-Cre* and *LSL-Kras*^{G12D} strains. Mice were kept in the Experimental Animal House of the Centre de Cancérologie de Marseille (CRCM) of Luminy. All experimental procedures on animals were approved by the Comité d'éthique de Marseille numéro 14 and in accordance with the European Union regulations for animal experiments.

Induction of experimental pancreatitis. Pancreatitis was induced in 4-month-old *Nupr1*^{-/-} and *Nupr1*^{+/+} mice weighing 20–24 g. Caerulein (Sigma) was administered as intraperitoneal injections of 50 µg/kg body weight, as previously described⁴⁸. Saline-injected animals served as controls.

Preparation of isolated pancreatic acinar cells. Briefly, 5-week-old mice pancreata were immediately removed after euthanasia, cut into small sections, and digested with collagenase IA (Sigma-Aldrich) for 10 min at 37 °C as previously described⁴⁹. Acini were collected by centrifugation at 30 g for 5 min, washed and resuspended in Seahorse medium, and plated in pre-coated Cell Tak (Corning) Seahorse plates (Agilent).

Preparation of serum and tissue samples. Mice were sacrificed at several time points from 3 to 24 h following the first intraperitoneal injection of cerulein. Whole blood samples were centrifuged at 4 °C, and serum was stored at −80 °C. The pancreas was removed on ice, immediately frozen in liquid nitrogen, and stored at −80 °C.

Necrosis score evaluation. Formalin-fixed samples were embedded in paraffin and 5-µm sections were stained with hematoxylin and eosin. The histological alterations in the sections were scored by three experienced reviewers. The scores refer to ranges of percentages of cells involved from 0 (absent), 1 (minimal, 0 to 15%), 2 (moderate, 15 to 35%), 3 (important, 35 to 50%) to 4 (maximal, > 50%).

LDH and lipase serum concentration. A Cobas analyzer was used to measure enzyme concentrations in the serum samples of *Nupr1*^{-/-} and *Nupr1*^{+/+} mice, according to the manufacturer's specifications and using proprietary reagents.

RNA-seq. RNA from pancreata of 5-week-old mice was purified following the procedure of Chirgwin *et al.*⁵⁰. RNA integrity was assessed using the Agilent 2100 Bioanalyzer with the RNA 6000 Nano chip Kit. Samples were sent to the Transcriptomic and Genomic platform of Marseille-Luminy (TGML). The enrichment of mRNA, cDNA library construction for RNA-seq, sequencing, and bioinformatic data analysis were performed as previously described⁵¹.

Cell culture. MiaPaCa2 and Panc1 cells were obtained from the American Type Culture Collection and maintained in Dulbecco's modified Eagle's medium (DMEM) (Gibco, Life Technologies) supplemented with 10% fetal bovine serum (Lonza) at 37 °C with 5% CO₂.

siRNA transfection. Cells were plated at 70% confluence and INTERFERin reagent (Polyplus-transfection) was used to perform siRNA transfections, according to the manufacturer's protocol. Scrambled siRNA that targets no known gene sequence was used as a negative control. All assays were carried out 72 h post-transfection. The sequences of *Nupr1*-specific siRNA were siNUPR1-1 r(GGAGGACCCAGGACAGGAU)dTdT and siNUPR1-2 r(AGGUCGCACCAAGAGAGAA)dTdT.

CRISPR-Cas9 clones development. Cells were seeded in 12-well plates and transfected with 1 µg of *Nupr1* double nickase plasmid or double control nickase plasmid (Santa Cruz Biotechnology), using Lipofectamine 3000 Transfection Reagent (Thermo Fisher Scientific) in each well, following the manufacturer's protocol. Transfected cell selection was performed with puromycin and, after 72 h, single cell colonies were isolated. Complete allelic knockouts were confirmed using Sanger sequencing.

NUPR1 expression vector transfection. Panc1 cells (clones C1, NUPR1-KO1 and NUPR1-KO2) were seeded in 12-well plates and transfected with 2 µg of DNA (NUPR1-FLAG or control vector) and 2 µL of Lipofectamine 3000 Transfection Reagent (Thermo Fisher Scientific) per well. Cells were assayed after 24 h post-transfection.

LDH assay, ATP production, and caspase-3/7 activity assay. Cells were seeded at a density of 10,000 cells per well in 96-well plates. Cells were allowed to attach overnight and treated the next day for 24 h. At the end of the experiment, LDH release, ATP production, and caspase-3/7 activity were monitored using CytoTox-ONE (Promega G7890), CellTiter-Glo (Promega G7571) and Caspase-Glo 3/7 assay (Promega G8091), respectively. Data were normalized to the cell number.

RT-qPCR. RNA from cells was isolated using Trizol reagent (Invitrogen) and reverse-transcribed using Go Script (Promega) according to the manufacturer's instruction. Real-time quantitative PCR (RT-qPCR) was performed in a Stratagene MXPro-MX3005P using Promega reagents. Primer sequences are available upon request.

Western blot. Proteins were resolved by SDS-PAGE, transferred to nitrocellulose filters, revealed with ECL and detected using a Fusion FX7 imager (Vilber-Lourmat, France). The following antibodies were used: rabbit monoclonal anti-PERK (C33E10, CTS), rabbit polyclonal anti-BIP (C50B12, CTS), rabbit polyclonal anti-IRE1α (14C10, CTS), rabbit monoclonal anti-ATF6 (D4Z8V, CST), rabbit polyclonal anti-human NUPR1 antibody (home made) and anti-β-actin (A5316, Sigma).

Extracellular flux assay. Measurements were performed using a Seahorse Bioscience XF24 Extracellular Flux Analyzer. This system allowed measurement of the cellular oxygen consumption rate (OCR, in pmoles/min), the extracellular acidification rate (ECAR in mpH/min) and the proton production rate (PPR). Cells were

plated at 30,000 cells/well onto Seahorse 24-well plates 48 h before the assay. OCR was measured using the XF Cell Mito Stress Test Kit under basal conditions, and in response to 1 μ M oligomycin and 0.25 or 0.5 μ M of carbonylcyanide p-(trifluoro-methoxy) phenylhydrazone (FCCP) in MiaPaCa2 or pancreatic acini, respectively. Oligomycin injection allowed calculation of the OCR for ATP production, and FCCP treatment gave two indexes; the maximal OCR capacity and the spare respiratory capacity. Finally, OCR was stopped by adding the electron transport chain inhibitors rotenone and antimycin A (0.5 μ M each). ECAR was measured using the Seahorse XF Glycolysis Stress Test Kit. Glycolysis was calculated as the difference between the values of ECAR upon glucose addition (10 mM) and basal ECAR. Glycolytic capacity was calculated as the difference between ECAR following the injection of 1 μ M oligomycin, and the basal ECAR. Finally, glycolytic reserve was calculated as the difference in ECAR between glucose and oligomycin injections. At the end of the experiment, glycolysis was stopped by adding 2-Deoxyglucose (100 mM). The contribution of OXPHOS and glycolysis to ATP production was calculated using the OCR and PPR as previously described⁵². The Seahorse XF Mito Fuel Flex Test was used to determine the rate of oxidation of each fuel by measuring OCR. Inhibitors of glutaminase (BPTES 3 μ M), carnitine palmitoyl-transferase 1 A (Etomoxir 4 μ M), and glucose oxidation (UK5099 2 μ M) were used. Levels of OCR and ECAR were normalized to the cell number.

Lactate release, and glucose and glutamine uptake. The culture media was examined for levels of glucose, glutamine, and lactic acid using the YSI 2900 Biochemistry Analyzer (YSI Life Sciences, Yellow Springs, OH, USA) following the manufacturer's instructions. The increase in lactate production was calculated by subtracting the lactate present in the control medium (without exposure to cells) from the lactate present in the experimental media. Glucose and glutamine uptake were calculated by subtracting the level of the experimental media from the level of the control medium.

AnnexinV/PI staining. Cells were collected after incubation for 24 h with the stimuli. Cells were washed with PBS, then detached with Accutase (Gibco, Life Technologies), and resuspended in 100 μ l of 1X Annexin-binding buffer. Pacific-Blue Annexin V (5 μ l, BioLegend) was added to the cell suspension and after a 15-min incubation at room temperature, 400 μ l of 1X Annexin-binding buffer was added. Before analysis by flow cytometry, propidium iodide (5 μ l, Miltenyi Biotec) was added to the suspension. 10,000 events per sample were collected in a MACSQuant-VYB (Miltenyi Biotec, Surrey, UK). Data analysis was performed using the FlowJo software.

Superoxide anion production by the mitochondria. MitoSOX (Molecular Probes) was added to a final concentration of 5 μ M for 10 min. After incubation, cells were washed with warm PBS, detached with Accutase, and resuspended in HBSS (Gibco, Life Technologies) for flow cytometry; or fixed with 4% paraformaldehyde for 10 min at room temperature and mounted using Prolong Gold antifade reagent with DAPI (Invitrogen). In cytometry experiments, 10,000 events per sample were collected in a MACSQuant-VYB and data analysis was performed using FlowJo software. Image acquisition of mounted samples was carried out on a microscope Nikon Eclipse 90i fluorescence microscope.

Mitochondrial membrane potential. Measurement was performed using the MITO-ID Membrane potential detection kit (ENZ-51018) according to the manufacturer's protocol. Briefly, cells were collected, washed, and preincubated in 500 μ l of the Assay Solution containing 5 μ l of MITO-ID MP Detection Reagent for 15 min. After this, 10,000 events per sample were collected in a MACSQuant-VYB and orange fluorescence data analysis was performed using the FlowJo software.

Cytosolic calcium concentration. Cells were preincubated with Fluo-4 AM (Molecular Probes) for 30 min at 37 °C. Then, cells were washed and resuspended in HBSS for flow cytometry analysis. 10,000 events per sample were collected in a MACSQuant-VYB and data analysis from flow cytometry was performed using FlowJo software.

Mitochondrial network. Localization of the mitochondrial network was assayed by incubation of cells in the presence of MitoTracker DeepRed FM (200 nM, Molecular Probes) at 37 °C for 30 min. Then, cells were washed twice with PBS and fixed with 4% paraformaldehyde. Cells were subsequently permeabilized, incubated with 1% BSA and after, with Alexa Fluor 488 Phalloidin, according to the manufacturer's instructions. Finally, samples were mounted using the Prolong Gold antifade reagent with DAPI. Confocal images were acquired using an inverted microscope equipped with LSM 880 with Airyscan detector controlled by Zeiss Zen Black, 63x lens.

Electron microscopy. Samples were prepared using the NCMIR protocol for SBF-SEM⁵³. 70 nm-ultrathin sections were prepared using a Leica UCT Ultramicrotome (Leica, Austria) and deposited on formvar-coated slot grids. The grids were observed in an FEI Tecnai G2 at 200 KeV and acquisition was performed on a Veleta camera (Olympus, Japan).

Cytochrome c release. Measurement was performed using the Cytochrome c Release Apoptosis Assay Kit (QIA87) according to the manufacturer's protocol. Briefly, cells were collected, and treated with permeabilization buffer, the released cytochrome c was quickly washed out from cells and that which remained in the mitochondria was immunolabeled after fixing the cells. 10,000 events per sample were collected in a MACSQuant-VYB and data analysis from flow cytometry was performed using FlowJo software.

DNA microarray. Total RNA (15 μ g) was isolated and reverse transcribed for hybridization to the human oligonucleotide array U133 Plus 2.0 (Genechip, Affymetrix) as described previously⁵⁴. Arrays were processed using

the Affymetrix GeneChip Fluidic Station 450 and scanned using a GeneChip Scanner 3000 G7 (Affymetrix). The GeneChip Operating Software (Affymetrix GCOS v1.4) was used to obtain chip images with quality control conducted using the AffyQCReport software.

Statistics. Statistical analyses were performed using the unpaired 2-tailed Student *t* test and non-normal distribution. A *p* value less than or equal to 0.05 was considered significant. All values are expressed as mean \pm SEM. RT-qPCR data are representative of at least three independent experiments with technical triplicates completed.

References

- Mallo, G. V. *et al.* Cloning and expression of the rat p8 cDNA, a new gene activated in pancreas during the acute phase of pancreatitis, pancreatic development, and regeneration, and which promotes cellular growth. *The Journal of biological chemistry* **272**, 32360–32369 (1997).
- Garcia-Montero, A. *et al.* Expression of the stress-induced p8 mRNA is transiently activated after culture medium change. *European journal of cell biology* **80**, 720–725, <https://doi.org/10.1078/0171-9335-00209> (2001).
- Encinar, J. A. *et al.* Human p8 is a HMG-I/Y-like protein with DNA binding activity enhanced by phosphorylation. *The Journal of biological chemistry* **276**, 2742–2751, <https://doi.org/10.1074/jbc.M008594200> (2001).
- Grasso, D. *et al.* Genetic inactivation of the pancreatitis-inducible gene Nupr1 impairs PanIN formation by modulating Kras(G12D)-induced senescence. *Cell death and differentiation* **21**, 1633–1641, <https://doi.org/10.1038/cdd.2014.74> (2014).
- Hamidi, T. *et al.* Nuclear protein 1 promotes pancreatic cancer development and protects cells from stress by inhibiting apoptosis. *The Journal of clinical investigation* **122**, 2092–2103, <https://doi.org/10.1172/JCI60144> (2012).
- Malicet, C., Dagorn, J. C., Neira, J. L. & Iovanna, J. L. p8 and prothymosin alpha: unity is strength. *Cell cycle* **5**, 829–830, <https://doi.org/10.4161/cc.5.8.2686> (2006).
- Malicet, C. *et al.* Regulation of apoptosis by the p8/prothymosin alpha complex. *Proceedings of the National Academy of Sciences of the United States of America* **103**, 2671–2676, <https://doi.org/10.1073/pnas.0508955103> (2006).
- Sandi, M. J. *et al.* p8 expression controls pancreatic cancer cell migration, invasion, adhesion, and tumorigenesis. *Journal of cellular physiology* **226**, 3442–3451, <https://doi.org/10.1002/jcp.22702> (2011).
- Gironella, M. *et al.* p8/nupr1 regulates DNA-repair activity after double-strand gamma irradiation-induced DNA damage. *Journal of cellular physiology* **221**, 594–602, <https://doi.org/10.1002/jcp.21889> (2009).
- Cano, C. E. *et al.* Genetic inactivation of Nupr1 acts as a dominant suppressor event in a two-hit model of pancreatic carcinogenesis. *Gut* **63**, 984–995, <https://doi.org/10.1136/gutjnl-2013-305221> (2014).
- Giroux, V. *et al.* p8 is a new target of gemcitabine in pancreatic cancer cells. *Clinical cancer research: an official journal of the American Association for Cancer Research* **12**, 235–241, <https://doi.org/10.1158/1078-0432.CCR-05-1700> (2006).
- Tang, K. *et al.* Enhancement of gemcitabine sensitivity in pancreatic cancer by co-regulation of dCK and p8 expression. *Oncology reports* **25**, 963–970, <https://doi.org/10.3892/or.2011.1139> (2011).
- Palam, L. R., Gore, J., Craven, K. E., Wilson, J. L. & Korc, M. Integrated stress response is critical for gemcitabine resistance in pancreatic ductal adenocarcinoma. *Cell death & disease* **6**, e1913, <https://doi.org/10.1038/cddis.2015.264> (2015).
- Vasseur, S. *et al.* p8 is critical for tumour development induced by rasV12 mutated protein and E1A oncogene. *EMBO reports* **3**, 165–170, <https://doi.org/10.1093/embo-reports/kvf023> (2002).
- Emma, M. R. *et al.* NUPR1, a new target in liver cancer: implication in controlling cell growth, migration, invasion and sorafenib resistance. *Cell death & disease* **7**, e2269, <https://doi.org/10.1038/cddis.2016.175> (2016).
- Guo, X. *et al.* Lentivirus-mediated RNAi knockdown of NUPR1 inhibits human nonsmall cell lung cancer growth *in vitro* and *in vivo*. *Anat Rec (Hoboken)* **295**, 2114–2121, <https://doi.org/10.1002/ar.22571> (2012).
- Kim, K. S. *et al.* Expression and roles of NUPR1 in cholangiocarcinoma cells. *Anat Cell Biol* **45**, 17–25, <https://doi.org/10.5115/acb.2012.45.1.17> (2012).
- Li, J. *et al.* Knockdown of NUPR1 inhibits the proliferation of glioblastoma cells via ERK1/2, p38 MAPK and caspase-3. *J Neurooncol* **132**, 15–26, <https://doi.org/10.1007/s11060-016-2337-0> (2017).
- Zeng, C., Yi, B., Li, X. & Chen, J. [Knockdown of nuclear protein 1 (NUPR1) gene inhibits proliferation and promotes apoptosis of human multiple myeloma U266 cells]. *Xi bao yu fen zi mian yi xue za zhi = Chinese journal of cellular and molecular immunology* **33**, 1240–1246 (2017).
- Neira, J. L. *et al.* Identification of a Drug Targeting an Intrinsically Disordered Protein Involved in Pancreatic Adenocarcinoma. *Scientific reports* **7**, 39732, <https://doi.org/10.1038/srep39732> (2017).
- Carracedo, A. *et al.* Cannabinoids induce apoptosis of pancreatic tumor cells via endoplasmic reticulum stress-related genes. *Cancer research* **66**, 6748–6755, <https://doi.org/10.1158/0008-5472.CAN-06-0169> (2006).
- Salazar, M. *et al.* Cannabinoid action induces autophagy-mediated cell death through stimulation of ER stress in human glioma cells. *The Journal of clinical investigation* **119**, 1359–1372 (2009).
- Degterev, A. *et al.* Identification of RIP1 kinase as a specific cellular target of necrostatins. *Nature chemical biology* **4**, 313–321, <https://doi.org/10.1038/nchembio.83> (2008).
- Golstein, P. & Kroemer, G. Cell death by necrosis: towards a molecular definition. *Trends Biochem Sci* **32**, 37–43, <https://doi.org/10.1016/j.tibs.2006.11.001> (2007).
- Kroemer, G. & Pouyssegur, J. Tumor cell metabolism: cancer's Achilles' heel. *Cancer Cell* **13**, 472–482, <https://doi.org/10.1016/j.ccr.2008.05.005> (2008).
- Perry, S. W., Norman, J. P., Barbieri, J., Brown, E. B. & Gelbard, H. A. Mitochondrial membrane potential probes and the proton gradient: a practical usage guide. *BioTechniques* **50**, 98–115, <https://doi.org/10.2144/000113610> (2011).
- Kato, H. & Nishitoh, H. Stress responses from the endoplasmic reticulum in cancer. *Frontiers in oncology* **5**, 93, <https://doi.org/10.3389/fonc.2015.00093> (2015).
- Szklarczyk, D. *et al.* STRINGv10: protein-protein interaction networks, integrated over the tree of life. *Nucleic acids research* **43**, D447–452, <https://doi.org/10.1093/nar/gku1003> (2015).
- Sah, R. P. *et al.* Endoplasmic reticulum stress is chronically activated in chronic pancreatitis. *The Journal of biological chemistry* **289**, 27551–27561, <https://doi.org/10.1074/jbc.M113.528174> (2014).
- Malhotra, J. D. & Kaufman, R. J. ER stress and its functional link to mitochondria: role in cell survival and death. *Cold Spring Harbor perspectives in biology* **3**, a004424, <https://doi.org/10.1101/cshperspect.a004424> (2011).
- Berridge, M. J. The endoplasmic reticulum: a multifunctional signaling organelle. *Cell calcium* **32**, 235–249 (2002).
- Brookes, P. S., Yoon, Y., Robotham, J. L., Anders, M. W. & Sheu, S. S. Calcium, ATP, and ROS: a mitochondrial love-hate triangle. *American journal of physiology. Cell physiology* **287**, C817–833, <https://doi.org/10.1152/ajpcell.00139.2004> (2004).
- Porporato, P. E., Filigheddu, N., Pedro, J. M. B., Kroemer, G. & Galluzzi, L. Mitochondrial metabolism and cancer. *Cell research* **28**, 265–280, <https://doi.org/10.1038/cr.2017.155> (2018).
- Yang, M., Soga, T. & Pollard, P. J. Oncometabolites: linking altered metabolism with cancer. *The Journal of clinical investigation* **123**, 3652–3658, <https://doi.org/10.1172/JCI67228> (2013).

35. Dickman, K. G. & Mandel, L. J. Differential effects of respiratory inhibitors on glycolysis in proximal tubules. *The American journal of physiology* **258**, F1608–1615, <https://doi.org/10.1152/ajprenal.1990.258.6.F1608> (1990).
36. Veiga, S. R. *et al.* Phenformin-Induced Mitochondrial Dysfunction Sensitizes Hepatocellular Carcinoma for Dual Inhibition of mTOR. *Clinical cancer research: an official journal of the American Association for Cancer Research* **24**, 3767–3780, <https://doi.org/10.1158/1078-0432.CCR-18-0177> (2018).
37. Cano, C. E. *et al.* Homotypic cell cannibalism, a cell-death process regulated by the nuclear protein 1, opposes to metastasis in pancreatic cancer. *EMBO molecular medicine* **4**, 964–979, <https://doi.org/10.1002/emmm.201201255> (2012).
38. Kong, D. K. *et al.* Deficiency of the transcriptional regulator p8 results in increased autophagy and apoptosis, and causes impaired heart function. *Molecular biology of the cell* **21**, 1335–1349, <https://doi.org/10.1091/mbc.E09-09-0818> (2010).
39. Russell, R. C., Yuan, H. X. & Guan, K. L. Autophagy regulation by nutrient signaling. *Cell research* **24**, 42–57, <https://doi.org/10.1038/cr.2013.166> (2014).
40. Poels, J. *et al.* Autophagy and phagocytosis-like cell cannibalism exert opposing effects on cellular survival during metabolic stress. *Cell death and differentiation* **19**, 1590–1601, <https://doi.org/10.1038/cdd.2012.37> (2012).
41. Lee, Y. K. *et al.* Identification of a mitochondrial defect gene signature reveals NUPR1 as a key regulator of liver cancer progression. *Hepatology* **62**, 1174–1189, <https://doi.org/10.1002/hep.27976> (2015).
42. Lee, Y. K., Woo, H. G. & Yoon, G. Mitochondrial defect-responsive gene signature in liver-cancer progression. *BMB reports* **48**, 597–598 (2015).
43. Maida, A. *et al.* A liver stress-endocrine nexus promotes metabolic integrity during dietary protein dilution. *The Journal of clinical investigation* **126**, 3263–3278, <https://doi.org/10.1172/JCI85946> (2016).
44. Saveljeva, S., Mc Laughlin, S. L., Vandenabeele, P., Samali, A. & Bertrand, M. J. Endoplasmic reticulum stress induces ligand-independent TNFR1-mediated necroptosis in L929 cells. *Cell death & disease* **6**, e1587, <https://doi.org/10.1038/cddis.2014.548> (2015).
45. Vasseur, S. *et al.* p8 improves pancreatic response to acute pancreatitis by enhancing the expression of the anti-inflammatory protein pancreatitis-associated protein I. *The Journal of biological chemistry* **279**, 7199–7207, <https://doi.org/10.1074/jbc.M309152200> (2004).
46. Folch-Puy, E., Granell, S., Dagorn, J. C., Iovanna, J. L. & Closa, D. Pancreatitis-associated protein I suppresses NF-kappa B activation through a JAK/STAT-mediated mechanism in epithelial cells. *J Immunol* **176**, 3774–3779 (2006).
47. Vasseur, S. *et al.* p8-deficient fibroblasts grow more rapidly and are more resistant to adriamycin-induced apoptosis. *Oncogene* **21**, 1685–1694, <https://doi.org/10.1038/sj.onc.1205222> (2002).
48. Halangk, W. *et al.* Role of cathepsin B in intracellular trypsinogen activation and the onset of acute pancreatitis. *The Journal of clinical investigation* **106**, 773–781, <https://doi.org/10.1172/JCI9411> (2000).
49. Santofimia-Castano, P. *et al.* Melatonin induces the expression of Nrf2-regulated antioxidant enzymes via PKC and Ca²⁺ influx activation in mouse pancreatic acinar cells. *Free radical biology & medicine* **87**, 226–236, <https://doi.org/10.1016/j.freeradbiomed.2015.06.033> (2015).
50. Chirgwin, J. M., Przybyla, A. E., MacDonald, R. J. & Rutter, W. J. Isolation of biologically active ribonucleic acid from sources enriched in ribonuclease. *Biochemistry* **18**, 5294–5299 (1979).
51. Amrani, A. *et al.* Transcriptomics reveal several gene expression patterns in the piezophile *Desulfovibrio hydrothermalis* in response to hydrostatic pressure. *PloS one* **9**, e106831, <https://doi.org/10.1371/journal.pone.0106831> (2014).
52. Wu, H., Ying, M. & Hu, X. Lactic acidosis switches cancer cells from aerobic glycolysis back to dominant oxidative phosphorylation. *Oncotarget* **7**, 40621–40629, <https://doi.org/10.18632/oncotarget.9746> (2016).
53. Deerinck, T. J., Bushong, E. A., Thor, A. & Ellisman, M. H. NCIMIR methods for 3D EM: a new protocol for preparation of biological specimens for serial block face scanning electron microscopy. *Microscopy*, 6–8 (2010).
54. Hamidi, T. *et al.* Nupr1-aurora kinase A pathway provides protection against metabolic stress-mediated autophagic-associated cell death. *Clinical cancer research: an official journal of the American Association for Cancer Research* **18**, 5234–5246, <https://doi.org/10.1158/1078-0432.CCR-12-0026> (2012).

Acknowledgements

We are grateful to two anonymous reviewers for their constructive comments. This work was supported by La Ligue Contre le Cancer, INCa, Cancerpole PACA, DGOS (labellisation SIRIC) and INSERM. PS-C is supported by Fundación Alfonso Martín Escudero and Fondation de France. The electron microscopy experiments were performed in the PiCSL-FBI core facility (IBDM, AMU-Marseille). The confocal microscopy experiments were performed in the “Plateforme de Microscopie et Imagerie Scientifique” of CRCM of Marseille.

Author Contributions

P.S.-C., P.S. and J.L.I. proposed the concept and designed the experiments; P.S.-C., W.L., J.B., O.G. and G.L. carried out experiments; P.S.-C., G.L., A.C., J.L.N., A.G., R.U., P.S. and J.L.I. analyzed and interpreted the results; P.S.-C., G.L., J.L.N., A.G., R.U., P.S. and J.L.I. wrote the manuscript.

Additional Information

Supplementary information accompanies this paper at <https://doi.org/10.1038/s41598-018-35020-3>.

Competing Interests: J.L.I. is consulting from Dynabio S.A. (Marseille, France). P.S.-C., W.J., J.B., O.G., A.C., G.L., J.L.N., R.U., P.S. declare no financial and non-financial conflict of interest.

Publisher's note: Springer Nature remains neutral with regard to jurisdictional claims in published maps and institutional affiliations.



Open Access This article is licensed under a Creative Commons Attribution 4.0 International License, which permits use, sharing, adaptation, distribution and reproduction in any medium or format, as long as you give appropriate credit to the original author(s) and the source, provide a link to the Creative Commons license, and indicate if changes were made. The images or other third party material in this article are included in the article's Creative Commons license, unless indicated otherwise in a credit line to the material. If material is not included in the article's Creative Commons license and your intended use is not permitted by statutory regulation or exceeds the permitted use, you will need to obtain permission directly from the copyright holder. To view a copy of this license, visit <http://creativecommons.org/licenses/by/4.0/>.