



HAL
open science

Serotonin Regulates the Firing of Principal Cells of the Subiculum by Inhibiting a T-type Ca²⁺ Current

Anders V Petersen, Camilla S Jensen, Valérie Crépel, Mathias Falkerslev,
Jean-François Perrier

► **To cite this version:**

Anders V Petersen, Camilla S Jensen, Valérie Crépel, Mathias Falkerslev, Jean-François Perrier. Serotonin Regulates the Firing of Principal Cells of the Subiculum by Inhibiting a T-type Ca²⁺ Current. *Frontiers in Cellular Neuroscience*, 2017, 11, 10.3389/fncel.2017.00060 . hal-01965558

HAL Id: hal-01965558

<https://amu.hal.science/hal-01965558>

Submitted on 26 Dec 2018

HAL is a multi-disciplinary open access archive for the deposit and dissemination of scientific research documents, whether they are published or not. The documents may come from teaching and research institutions in France or abroad, or from public or private research centers.

L'archive ouverte pluridisciplinaire **HAL**, est destinée au dépôt et à la diffusion de documents scientifiques de niveau recherche, publiés ou non, émanant des établissements d'enseignement et de recherche français ou étrangers, des laboratoires publics ou privés.



Distributed under a Creative Commons Attribution 4.0 International License



Serotonin Regulates the Firing of Principal Cells of the Subiculum by Inhibiting a T-type Ca^{2+} Current

Anders V. Petersen¹, Camilla S. Jensen², Valérie Crépel³, Mathias Falkerslev¹ and Jean-François Perrier^{1*}

¹Department of Neuroscience and Pharmacology, University of Copenhagen, Copenhagen, Denmark, ²Department of Biomedical Sciences, University of Copenhagen, Copenhagen, Denmark, ³Institut de Neurobiologie de la Méditerranée (INMED), Institut National de la Santé et de la Recherche Médicale (INSERM) U901, Aix-Marseille Université, Marseille, France

The subiculum is the main output of the hippocampal formation. A high proportion of its principal neurons fire action potentials in bursts triggered by the activation of low threshold calcium currents. This firing pattern promotes synaptic release and regulates spike-timing-dependent plasticity. The subiculum receives a high density of fibers originating from the raphe nuclei, suggesting that serotonin (5-HT) modulates subicular neurons. Here we investigated if and how 5-HT modulates the firing pattern of bursting neurons. By combining electrophysiological analysis with pharmacology, optogenetics and calcium imaging, we demonstrate that 5-HT_{2C} receptors reduce bursting activity by inhibiting a low-threshold calcium current mediated by T-type Ca^{2+} channels in principal cells of the subiculum. In addition, we show that the activation of this novel pathway decreases bursting activity and the occurrence of epileptiform discharges induced in *in vitro* models for temporal lobe epilepsy (TLE).

Keywords: serotonin, subiculum, calcium channels, burst firing, temporal lobe epilepsy (TLE)

OPEN ACCESS

Edited by:

Marco Ledri,
Lund University, Sweden

Reviewed by:

Terrance P. Snutch,
University of British Columbia,
Canada

Marco Canepari,
Laboratoire Interdisciplinaire de
Physique (CNRS), France

*Correspondence:

Jean-François Perrier
perrier@sund.ku.dk

Received: 23 November 2016

Accepted: 20 February 2017

Published: 07 March 2017

Citation:

Petersen AV, Jensen CS, Crépel V,
Falkerslev M and Perrier J-F
(2017) Serotonin Regulates the Firing
of Principal Cells of the Subiculum by
Inhibiting a T-type Ca^{2+} Current.
Front. Cell. Neurosci. 11:60.
doi: 10.3389/fncel.2017.00060

INTRODUCTION

The subiculum is the major output of hippocampal formation. It relays information from and to CA1 hippocampal region, cortical (entorhinal, perirhinal, retrosplenial) and subcortical regions (mammillary nucleus, pre-subiculum, nucleus accumbens; Naber and Witter, 1998; O'Mara et al., 2001). Because of this central position, the subiculum plays important roles in diverse functions such as spatial navigation (Sharp and Green, 1994; O'Mara et al., 2000) or learning and memory (Morris et al., 1990; Galani et al., 1998). In addition the subiculum becomes a source for temporal lobe epilepsy (TLE) when its principal cells are hyperexcitable (Cohen et al., 2002; Wellmer et al., 2002; Wozny et al., 2005). Depending on the ion channels expressed in their membranes, pyramidal cells fire action potentials regularly or in bursts caused by the activation of transient calcium currents (Jung et al., 2001). These intrinsic properties are essential for synaptic integration, as notable differences have been reported for the processing of signals by the two types of neurons. Long-term potentiation (LTP) relies on an increase in calcium concentration for regular firing cells but not for bursting neurons (Wozny et al., 2008). In contrast, postsynaptic bursts induce long-term depression (LTD) when causally paired with EPSPs but induce LTP when anticausally paired (Pandey and Sikdar, 2014). The fine-tuning of bursting behavior could therefore have an important impact on spike-timing-dependent plasticity.

Pyramidal cells from the hippocampus are modulated by serotonin (5-HT) released into the extracellular space by *en passant* synapses (Andersen, 2007). Interestingly the density of serotonergic terminals is the highest in the subiculum (Oleskevich and Descarries, 1990), suggesting that the monoamine is a major modulator of principal neurons.

Here we investigated if and how 5-HT modulates the firing properties of bursting neurons from the subiculum. By combining local field potential (LFP) recordings, patch clamp recordings, pharmacology, calcium imaging and optogenetics, we found that the activation of 5-HT_{2C} receptors decreases bursting by selectively inhibiting T-type Ca²⁺ channels. In addition, we show that the activation of the pathway we uncovered decreases the occurrence of epileptiform discharges induced in two *in vitro* models for TLE.

MATERIALS AND METHODS

Mouse Brain Slice Preparation

Experiments were performed on juvenile to adult C57BL/6 mice (P12–P30; Taconic, Denmark and Janvier, France) and from TPH2-ChR2-YFP mice (B6; SJL-Tg (Tph2-COP4*H13R/EYFP) 5Gfng/J, JAX stock #014555) of both sexes (8–10 weeks of age) for optogenetics. The surgical procedures complied with Danish legislation. This study was carried out in accordance with the recommendations of Department of Experimental Medicine of the University of Copenhagen. The protocol was approved by the Department of Experimental Medicine of the University of Copenhagen. Mice were killed by decapitation. The brain was transferred into a cooled solution of artificial cerebrospinal fluid (ACSF) containing (in mM): NaCl 125, KCl 2.5, NaHCO₃ 26, CaCl₂ 2, MgCl₂ 1, NaH₂PO₄ 1.25, Glucose 25. Parasagittal slices (300 μm) were cut with a vibratome (Microm HM 650V with CU 65 cooling unit or Leica VT1200). The slices were transferred to a dual-superfusion holding chamber containing 35°C ACSF at a high flow rate (>2 ml/min) continuously bubbled. The slices were pre-incubated for at least 1 h before measurement.

Electrophysiology

Visual patch-clamp recording was performed with an upright microscope (Olympus BX51WI). The recording chamber was continuously perfused with oxygenated ACSF. Glass pipettes pulled on a Puller (Sutter Instruments P87; Novato, CA, USA) were filled with the following solution: (in mM) K-gluconate 122, Na₂-ATP 5, MgCl₂ 2.5, CaCl₂ 0.0003, Mg-Gluconate 5.6, K-Hepes 5, H-Hepes 5, EGTA 1 (all from Sigma-Aldrich), Biocytin 10 (Invitrogen), Alexa Fluor 488 Hydrazide 1 (Invitrogen). KOH was added to adjust the pH at 7.3–7.4. Recordings were performed in whole-cell configuration. The recording electrodes (resistance 4–6 MΩ) were mounted on micromanipulators (Luigs and Neumann, Germany) and connected to CV-7B Current-Clamp and Voltage-Clamp Headstages (Molecular Devices, Sunnyvale, CA, USA). Recordings were acquired with a Multiclamp 700B amplifier and Digidata 1322A or 1440A Digitizer.

Induction of Epileptiform Discharges

Epileptiform activity was induced by applying an ACSF where MgCl₂ was replaced by CaCl₂. LFP were recorded in the subiculum with glass electrodes (2–3 MΩ; filled with normal ACSF). Epileptiform discharges were evoked by stimulation performed with a bipolar concentric electrode (TM33CCNON; World Precision Instruments, Sarasota, FL, USA) connected to an isolation unit (Isolator 11, Axon Instruments, Union City, CA, USA) triggered by an external signal. The stimulation electrode was positioned in the *stratum oriens* and *alveus* of CA1.

Calcium Imaging

Calcium imaging of individual cells was obtained by adding the Ca²⁺ sensitive dye Fura-2 (200 μM; Invitrogen) to the patch solution. The dye was excited at 340 nm with a monochromator (Till Photonics, Germany). The fluorescence was measured through an emission filter at 510 nm with a digital camera (QImaging Retiga-2000RV Camera) controlled by Till Vision software (v.4.0.1). Frames were collected every 399 ms.

Pharmacology

Neurons were isolated from their surrounding synaptic environment by blocking AMPA, NMDA and GABA_A and glycine receptors with CNQX (20 μM, Tocris), AP5 (50 μM, Tocris), Gabazine (10 μM, Tocris) and Strychnine (10 μM, Sigma-Aldrich). Ca²⁺ currents were isolated by blocking voltage gated K⁺ channels with 4-Aminopyridine (4-AP, 3 mM; Sigma-Aldrich), tetraethylammonium (TEA, 0.1 mM; Sigma-Aldrich) cesium (1 mM; Sigma-Aldrich) and Na⁺ channels with tetrodotoxin (TTX, 1 μM; Alomone Labs). Drugs applied to the extracellular medium: 5-HT hydrochloride (10 μM; Sigma Aldrich); 4-Iodo-2,5-dimethoxy- α -methylbenzeneethanamine hydrochloride (DOI hydrochloride; 10–20 μM, Tocris); Mibefradil (8–16 μM, Tocris).

Focal Application of Drugs

Focal application of drugs was obtained with a glass pipette (diameter 2–3 μm) mounted on a micromanipulator. Drugs: 8,9-Dichloro-2,3,4,4a-tetrahydro-1H-pyrazino[1,2-*a*]quinoxalin-5(6H)-one hydrochloride (WAY 161503 hydrochloride; 500 μM, Tocris), 1,2,3,4,8,9,10,11-Octahydro[1,4]diazepino[6,7,1-*jk*]carbazole hydrochloride (WAY 629 hydrochloride; 10 μM, Tocris), 5-HT hydrochloride (1.5 mM; Sigma Aldrich). 5-HT was also applied by means of microiontophoresis. Glass micropipettes were filled with 5-HT hydrochloride (100 mM; pH 4). Diffusion of 5-HT from the pipette was minimized by a holding current of –50 nA. 5-HT was released by positive current pulses (10–150 nA; 1–5 s).

Immunohistochemistry and Imaging

Slices were fixed in 4% paraformaldehyde in PBS for 30 min at 4°C before staining. Free-floating slices were washed in PBS and permeabilized overnight at 4°C with 1% triton X-100 dissolved in PBS. The slices were blocked for 3 h in blocking buffer (4% milk, 0.3% Triton X-100/PBS), stained with primary

antibodies diluted in blocking buffer (2–3 days at 4°C) and washed in PBS. Immunoreactivity was detected using Alexa dye-conjugated secondary antibodies diluted in blocking buffer. The slices were incubated with the secondary antibodies for 2 h and then washed in 0.1% triton X-100 in PBS. Finally, slices were washed 2–3 times in PBS and mounted with ProLong Gold antifade reagent (Life Technologies) on glass microscope slides. Imaging was performed with Zeiss LSM 780 confocal system equipped with a 20× (LD Plan Neofluar, NA 0.8) and a 63× (Plan Apochromat, NA 1.4) oil immersion objective with a pinhole size of one and pixel format of 1024 × 1024. Line averaging was performed to reduce noise. Images were transferred to ImageJ/FIJI.

Antibodies and Dyes

Voltage-gated calcium channels were detected with rabbit polyclonal antibodies from Alomone (Ca_v3.1:ACC-021 and Ca_v3.3:ACC-009) in a concentration 1:50. 5-HT was detected with a rat monoclonal antibody (1:100; Milipore). 5-HT_{2C} receptors were detected by a mouse monoclonal IgG1 antibody (BD Pharmigen; clone SR-2C) in concentration 1:100. Microtubule associated protein 2 (MAP2) was detected with a mouse monoclonal IgG1 antibody (Sigma; clone HM-2) in concentration 1:300 or rabbit polyclonal IgG (Santa-Cruz, MAP-2 Antibody (H-300) in concentration 1:100), DAPI nucleic acid stain (1 mg/ml; Invitrogen D-9542) in concentration 1:300.

Slice from the Hippocampus of Pilocarpine Treated Rats

All experiments were approved by the Institut National de la Santé et de la Recherche Médicale animal care and use agreement (D-13-055-19) and the European community council directive (2010/63/UE). Rats (5–6 weeks, 150–350 g, Janvier, France) were injected intraperitoneally with pilocarpine hydrochloride (340 mg/kg) 30 min after the peripheral cholinergic antagonist scopolamine methyl nitrate (1 mg/kg, i.p.). Eighty percent of the rats experienced class IV/V seizures. After 2–3 h of *status epilepticus*, diazepam (8 mg/kg) was injected (i.p.). After a seizure-free period of several weeks, we selected for recordings and analysis only rats that experienced recurrent spontaneous seizures (7–11 months after the pilocarpine injection; $n = 3$). Rats were anesthetized with chloral hydrate (70 mg/kg, i.p.) and decapitated. The brain was removed, the hippocampi were dissected, and transverse 400 μm-thick hippocampal slices were cut with a Leica VT1000S tissue slicer (Leica, Germany) in a solution containing the following (in mM): 132.5 choline chloride, 2.5 KCl, 1.25 NaH₂PO₄, 26 NaHCO₃, 7 MgCl₂, 0.5 CaCl₂, and 7 D-glucose (2–5°C). Slices were then transferred for rest at room temperature (>1 h) in oxygenated normal ACSF containing the following (in mM): 126 NaCl, 3.5 KCl, 1.2 NaH₂PO₄, 26 NaHCO₃, 1.3 MgCl₂, 2.0 CaCl₂, and 10 D-glucose, pH 7.4. This solution is referred to as rat ACSF (rACSF). Acute slices were transferred to a recording chamber maintained at 30–32°C and perfused (2 ml/min)

with oxygenated normal ACSF. LFP were recorded in the subiculum with glass electrodes (2–3 MΩ; filled with normal ACSF) using a DAM-80 amplifier (bandpass filter, 1–3 Hz; World Precision Instruments, Sarasota, FL, USA) and evoked by electrical stimulations with bipolar NiCh electrodes (NI-0.7F, Phymep, France) positioned in the *stratum oriens* and *alveus* of CA1.

Data Analysis

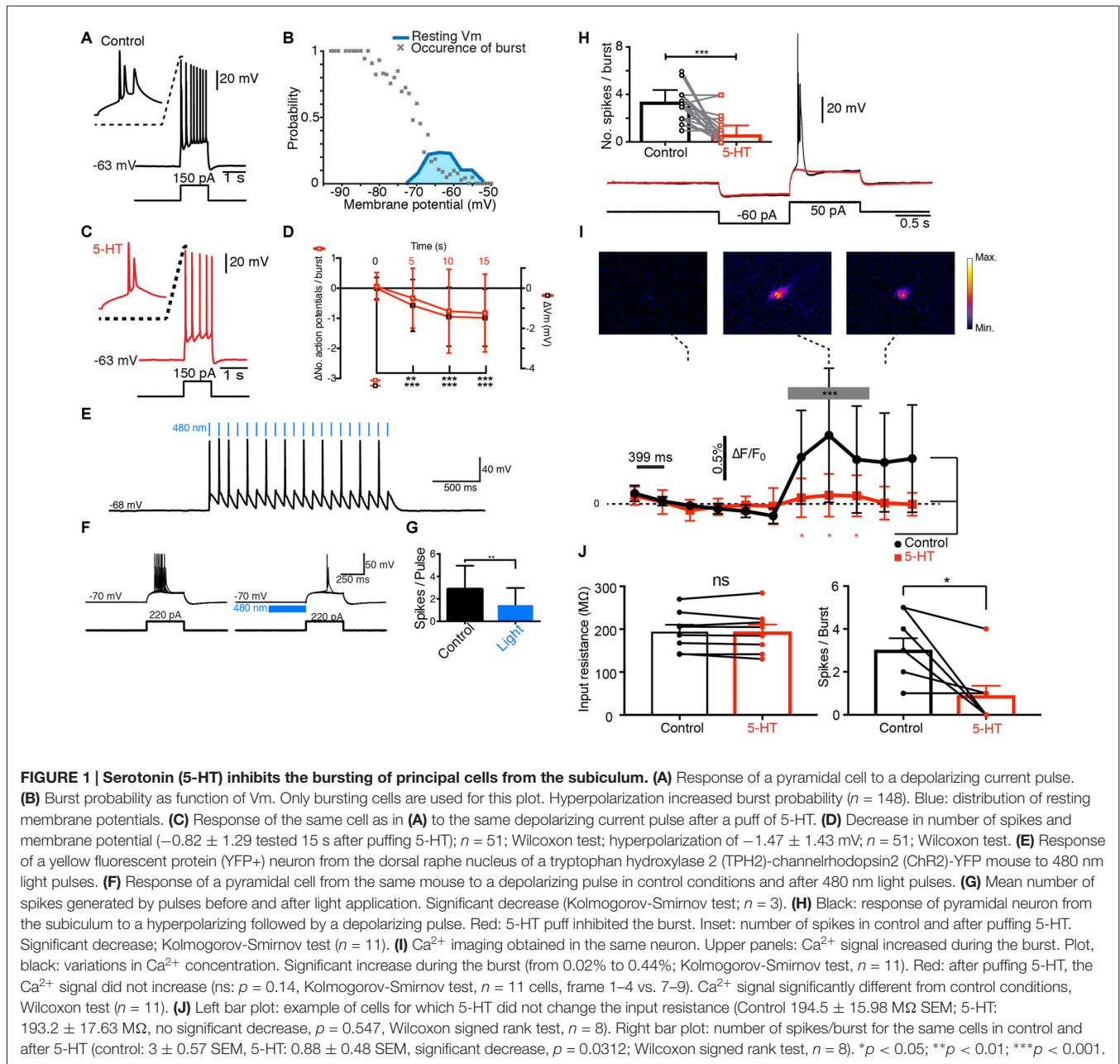
Data were analyzed with Clampfit 10 (Molecular Devices), Matlab (Mathworks) and GraphPad Prism. Samples were compared by non-parametric tests. Data are represented as mean ± standard deviation (SD) or standard error of the mean (SEM), as stated in the text. Statistical significance was assessed by non-parametric Wilcoxon signed-rank test and kolmogorov-smirnov two sample test, * $P < 0.05$, ** $P < 0.01$, *** $P < 0.001$.

RESULTS

Serotonin Inhibits the Burst Firing of Pyramidal Neurons from the Subiculum

We characterized the firing behavior of principal cells from the subiculum by recording the electrical activity of individual pyramidal cells using patch-clamp technique, LFP, optogenetics and calcium imaging. In agreement with previous observations (Mason, 1993; Stewart and Wong, 1993; Taube, 1993), we found that 284 out of 351 (81%) pyramidal cells recorded in the distal half of the subiculum, responded to depolarizing current pulses with a burst of action potentials followed by regular firing (**Figure 1A**; mice age P12–P28). The probability of generating a burst was increased when evoked from a hyperpolarized membrane potential and decreased when evoked from a depolarized membrane potential (**Figure 1B**), suggesting involvement of a voltage-sensitive conductance partly de-inactivated at rest and sharing the properties of T-type Ca²⁺ channels (Llinás and Yarom, 1981).

Next, we tested how 5-HT modulated the electrical properties of principal cells. When 5-HT was puff-applied near the membrane, the number of spikes present in each burst decreased significantly (**Figure 1C**) and the membrane was slightly hyperpolarized (**Figure 1D**). Both effects were still present 15 s after the puff of 5-HT and developed with similar time courses (**Figure 1D**). The inhibition of the burst did not depend on changes in input resistance induced by 5-HT (**Figure 1J**); Significant decrease of bursts in cells with no decrease in input resistance: control input resistance 194.5 ± 15.98 MΩ SEM; 5-HT: 193.2 ± 17.63 MΩ, $p = 0.547$; Number of spikes/burst in control: 3 ± 0.57, 5-HT: 0.88 ± 0.48 SEM, $p = 0.0312$; Wilcoxon signed rank test, $n = 8$). We tested if synaptic release of 5-HT also inhibited the bursting with a mouse expressing channelrhodopsin2 (ChR2) and Yellow Fluorescent Protein (YFP) under the control of tryptophan hydroxylase 2 (TPH2; Zhao et al., 2011). Pulses of blue light triggered action potentials in YFP+ cells from raphe nuclei recorded in a slice preparation from the brainstem ($n = 2$; **Figure 1E**). In brain slices, bursts of action potentials evoked by depolarizing



current pulses in principal cells from the subiculum were significantly inhibited by blue light acting on serotonergic terminals (Figures 1E,G; $n = 3$; mice age: 9 weeks). This observation suggests that synaptic release of 5-HT inhibited bursting activity. Since T-type Ca^{2+} channels trigger voltage-dependent bursts of action potentials (Llinás and Yarom, 1981), we checked if the intracellular Ca^{2+} concentration increased during bursts. After loading pyramidal cells with the Ca^{2+} indicator Fura-2, we monitored the fluorescence signal at 340 nm. The fluorescence intensity increased significantly during burst, suggesting an elevation of the intracellular free Ca^{2+} (Figures 1H,I; mice age P12–P28). When 5-HT was puff applied near the membrane, the burst was inhibited (Figure 1H) and

the Ca^{2+} signal was attenuated (Figure 1I). Taken together, our results suggest that the activation of 5-HT receptors decreases bursting in principal cells by inhibiting T-type Ca^{2+} channels.

Serotonin Inhibits Ca_v3 Channels in Subicular Pyramidal Neurons

To test our hypothesis, we isolated Ca^{2+} currents by blocking Na^+ conductances with TTX and K^+ channels with a mixture of TEA, 4-AP and cesium. An activation protocol with a pre-hyperpolarization step, evoked a transient inward current (Figure 2A; mice age P14–P27) with a threshold around

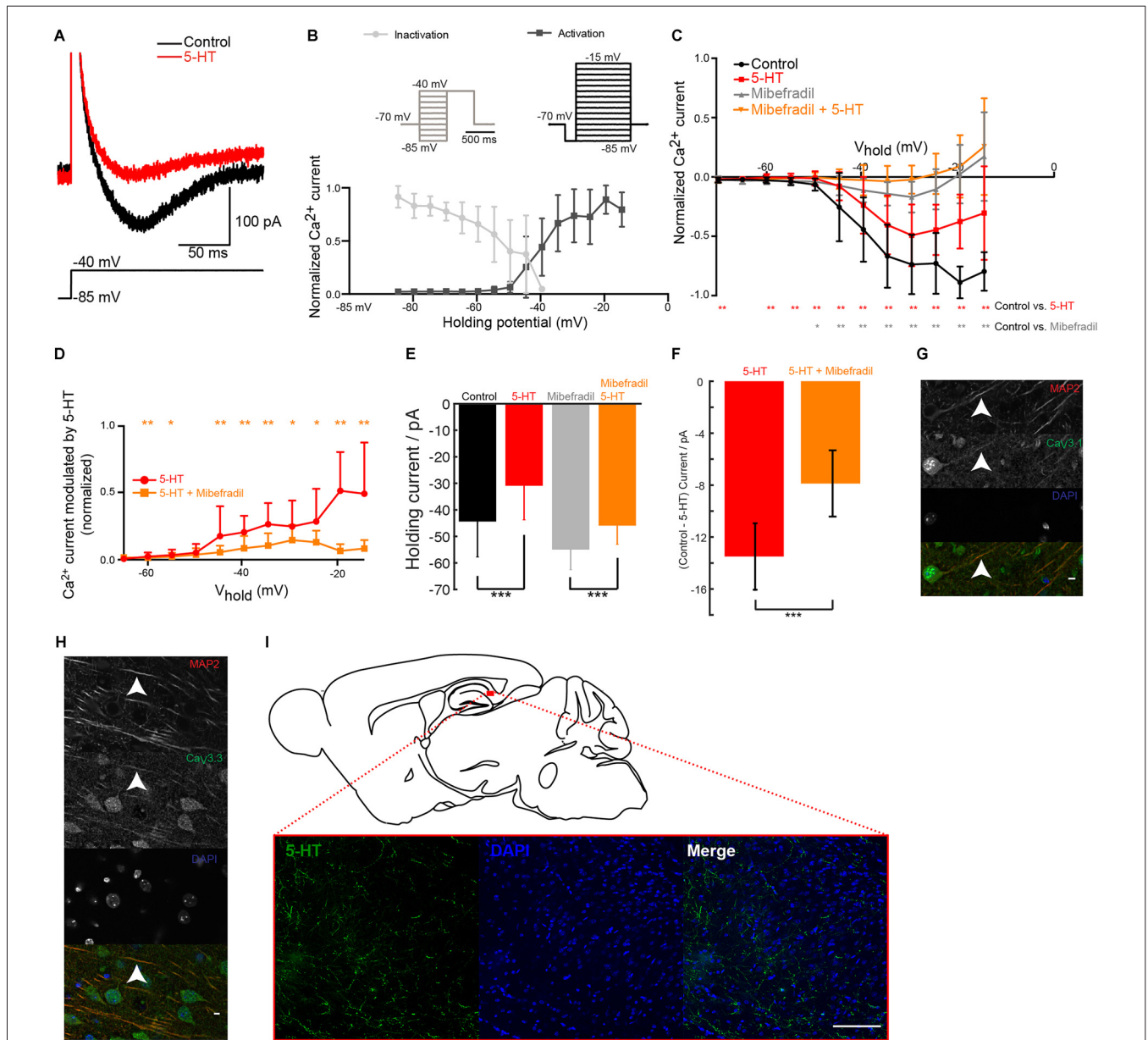


FIGURE 2 | 5-HT inhibits T-type Ca^{2+} current in pyramidal cells from the subiculum. (A) Ca^{2+} current isolated by adding tetrodotoxin (TTX; 1 μ M), tetraethylammonium (TEA; 0.1 mM), 4-Aminopyridine (4-AP; 3 mM) and cesium (1 mM). A depolarizing step from -85 mV to -35 mV evoked a transient low-threshold inward current (black). After puffing 5-HT, the amplitude of the current was decreased. Scale bars; 200 pA and 100 ms. **(B)** Normalized amplitude of the mean current (\pm SD) evoked during activation and inactivation protocols (insets). **(C)** Normalized amplitude of the current evoked during activation protocols in control conditions (black) and in mibefradil (8 μ M; gray). Significant decrease (gray); Wilcoxon test ($n = 10$). Red: after puffing 5-HT in normal Ringer. Significant decrease (red stars); Wilcoxon test; $n = 10$. Orange: in mibefradil (8 μ M), after puffing 5-HT (inhibition of $38.15\% \pm 61.20$; Wilcoxon test; $n = 10$). **(D)** Normalized amplitude of current modulated by 5-HT (control–5-HT) in normal Ringer (red) and in mibefradil (orange). Significant inhibition (Wilcoxon test; $n = 10$). **(E)** Left: normalized holding current in control (black) and after 5-HT application (red); right: normalized holding current in mibefradil (8 μ M; gray) before and after 5-HT application (orange). Error bars indicate SEM (Wilcoxon test; $n = 10$). **(F)** Average difference in holding current before and after 5-HT application in control conditions (red) and after mibefradil (8 μ M; orange). Significant effect of mibefradil (Wilcoxon test; $n = 10$). **(G,H)** Immunohistochemical staining of the subiculum. Scale bar: 5 μ m. Red: microtubule associated protein 2 (MAP2); Blue: DAPI; Green Cav3.1 (g), Cav3.3 (h). **(I)** Immunohistochemical staining of the subiculum. Scale bar: 100 μ m. Green: 5-HT; Blue: DAPI. * $p < 0.05$; ** $p < 0.01$; *** $p < 0.001$.

-50 mV. The current displayed large overlap between curves describing activation (data not shown), a characteristic found for T but not R-type Ca^{2+} channels (Randall and Tsien,

1997). Both the activation and the inactivation characteristics matched the properties of low-threshold T-type Ca^{2+} channels recorded in hippocampal neurons (Toselli and Taglietti, 1992;

Figure 2B). Puff-application of 5-HT significantly decreased the amplitude of the current at all potentials held above the threshold for low threshold Ca^{2+} spikes (LTS; **Figures 2A,C,D**). Upon addition of mibefradil, most of the T-type calcium current was blocked (**Figure 2C**) and the inhibitory effect of 5-HT on the Ca^{2+} current was strongly reduced (**Figures 2C,D**). The current modulated by 5-HT was significantly inhibited by mibefradil (**Figure 2D**). The hyperpolarization induced by 5-HT could be caused by the inhibition of a window current mediated by T-type Ca^{2+} channels as described in other parts of the brain (Dreyfus et al., 2010). In agreement, we found that the negative current holding the membrane at -70 mV was reduced after puffing 5-HT (**Figure 2E**). In the presence of mibefradil, 5-HT still produced an inhibition of the inward current, but to a much lesser extent (**Figures 2E,F**). This suggests, that most of the hyperpolarization induced by 5-HT was mediated by the inhibition of a T-type window current. We verified that subicular neurons express T-type Ca^{2+} channels by means of immunohistochemical staining performed with antibodies directed against $\text{Ca}_v3.1$, $\text{Ca}_v3.2$ and $\text{Ca}_v3.3$ subunits. We found expression of $\text{Ca}_v3.1$ and $\text{Ca}_v3.3$ on the soma and apical dendrites of pyramidal cells (**Figures 2G,H**), while $\text{Ca}_v3.2$ staining was inconclusive (Data not shown). In addition, staining performed with an antibody directed against 5-HT revealed a dense innervation of the subiculum (**Figure 2I**). Altogether our data show that 5-HT decreases the burst firing of subicular neurons by inhibiting a current mediated by T-type Ca^{2+} channels.

The Inhibition of T-type Channels Is Mediated by 5-HT_{2C} Receptors

Next we identified the serotonergic receptor responsible for the inhibition of T-type Ca^{2+} current. Similar to 5-HT, puff-application of the selective 5-HT_{2C} receptor agonists WAY 161503 or WAY 629 near the membrane decreased the number of spikes evoked during bursts of action potentials and hyperpolarized the membrane potential (**Figures 3A,B**; mice age P15–P19). Again, the inhibitory effect remained significant 15 s after applying the drug. The isolated Ca^{2+} current recorded in voltage-clamp mode was also significantly inhibited (**Figures 3C,D**). Our data suggest that 5-HT_{2C} receptors are responsible for the inhibition of T-type Ca^{2+} currents. We found that antibodies directed against 5-HT_{2C} receptors stained the dendrites of subicular pyramidal cells (**Figure 3E**) where $\text{Ca}_v3.1$ and $\text{Ca}_v3.3$ channels were also expressed (**Figures 3F,G**).

Serotonin Decreases Epileptiform Discharges in the Subiculum

Subiculum is critical for seizure activity occurring in TLE in humans and rodents (Behr and Heinemann, 1996b; Cohen et al., 2002; Wozny et al., 2005). Under pathological conditions, the subicular pyramidal neurons that possess burst properties mediated by Ca^{2+} channels (Jung et al., 2001) lead the seizure activity (Menendez de la Prida and Gal, 2004). For these reasons, we evaluated the ability of 5-HT to prevent epileptiform

discharges in the subiculum in slices from the hippocampus of pilocarpine treated chronic epileptic rats (see “Materials and Methods” Section). We recorded the electrical activity in the subiculum by means of a LFP electrode. A single electrical stimulation applied in *stratum oriens* and *stratum alveus* of CA1 evoked an epileptiform discharge including recurrent activities in normal rACSF (**Figures 4A–D**; $n = 6$ slices). This type of activity is never observed in normal animals when a single electrical stimulation is applied in normal rACSF (Taube, 1993; Colling et al., 1998; Wozny et al., 2008). In the presence of 5-HT (10 μM), the number of recurrent activities was strongly reduced (**Figures 4A–D**). This observation is in agreement with previous studies showing that 5-HT decreases the occurrence of seizures in the hippocampus (Prendiville and Gale, 1993; Yan et al., 1994; Bagdy et al., 2007; Buchanan et al., 2014). We obtained similar results in a slice preparation from the mouse brain with epileptiform activity induced by lowering the extracellular concentration of Mg^{2+} (Behr and Heinemann, 1996a; Harris and Stewart, 2001a; Menendez de la Prida and Gal, 2004). In this condition, spontaneous epileptiform events were present (**Figure 4Q**). Here again, a single shock applied in *stratum oriens* and *stratum alveus* of CA1 induced a barrage of recurrent activities in the subiculum (**Figures 4E–H**; mice age P15–P22). After addition of 5-HT (10 μM), the intensity of these activities was strongly decreased (**Figures 4E–H**; $n = 8$ slices) in accordance with previous studies (Behr and Heinemann, 1996a).

Since bursting neurons initiate epileptiform activity in the subiculum (Harris and Stewart, 2001a; Cohen et al., 2002; Menendez de la Prida and Gal, 2004), we tested the effect of the T-type Ca^{2+} channel blocker mibefradil in slices with epileptiform activity induced by low extracellular Mg^{2+} concentration. Mibefradil strongly decreased the occurrence of epileptiform discharges evoked in the subiculum by stimulation of CA1 in all slices tested (**Figures 4I–L**).

Finally, we tested the effect of a 5-HT₂ receptor agonist on seizures evoked by electrical stimulation of the CA1 region in slices where epileptiform activity was induced by lowering the extracellular concentration of Mg^{2+} ions. Bath application of the 5-HT_{2A/2C} agonist DOI hydrochloride significantly decreased the intensity of epileptiform discharges evoked in the subiculum (**Figures 4M–P**).

DISCUSSION

Our results show that 5-HT exerts a powerful inhibitory control of the excitability of principal cells from the subiculum by inhibiting their bursting behavior. By activating 5-HT_{2C} receptors, 5-HT selectively inhibits the T-type Ca^{2+} channels responsible for the burst. In addition to the inhibition of bursts, we found that 5-HT hyperpolarized the membrane of principal cells from the subiculum. This latter effect resembles the hyperpolarization caused by the activation of 5-HT_{1A} receptors in CA1 pyramidal cells (Andrade and Nicoll, 1987). However, the amplitude and the duration hyperpolarization induced by 5-HT (**Figure 1D**) were comparable to the ones induced by agonists for 5-HT_{2C} receptors (**Figure 3B**), suggesting that most

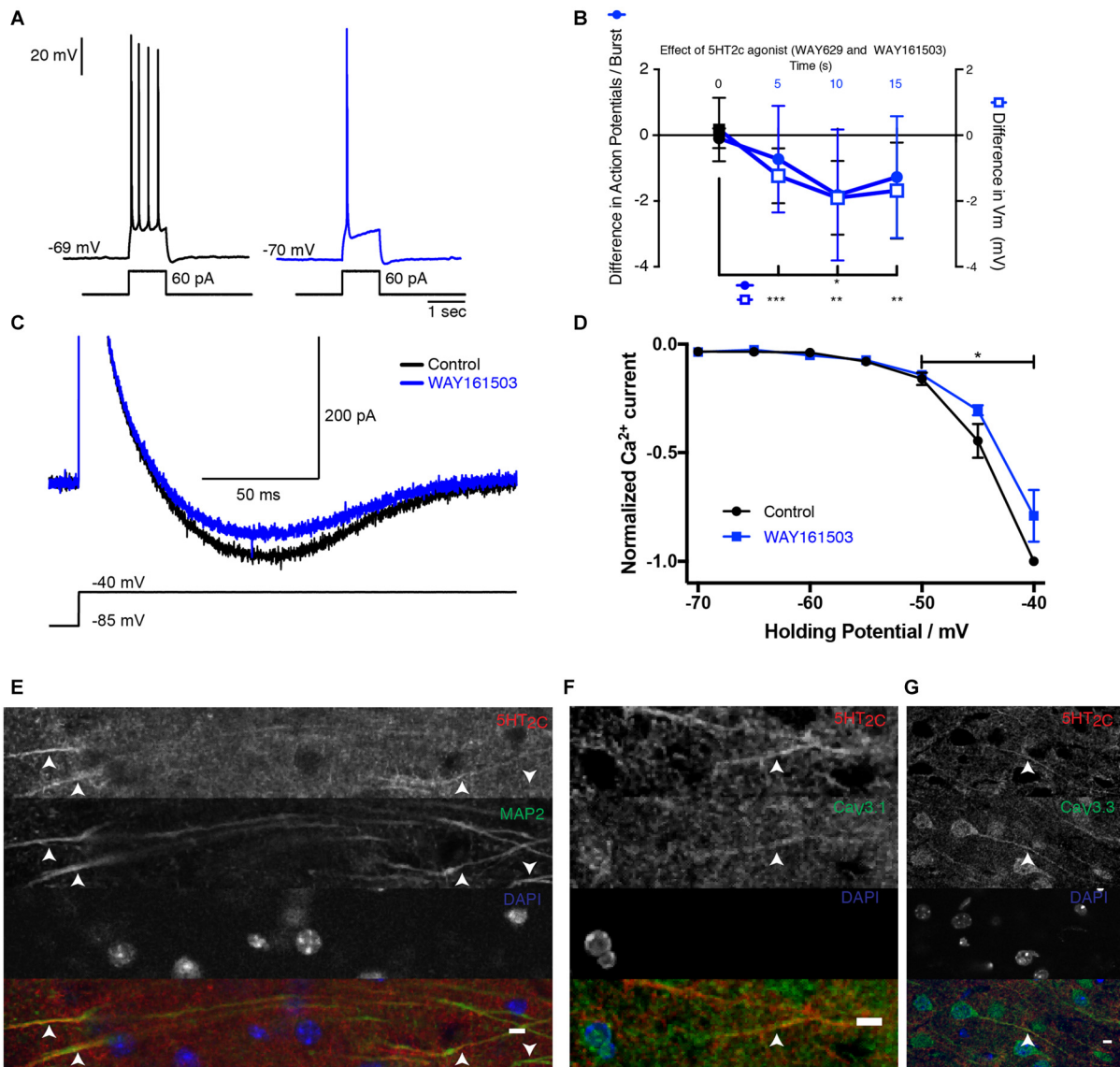


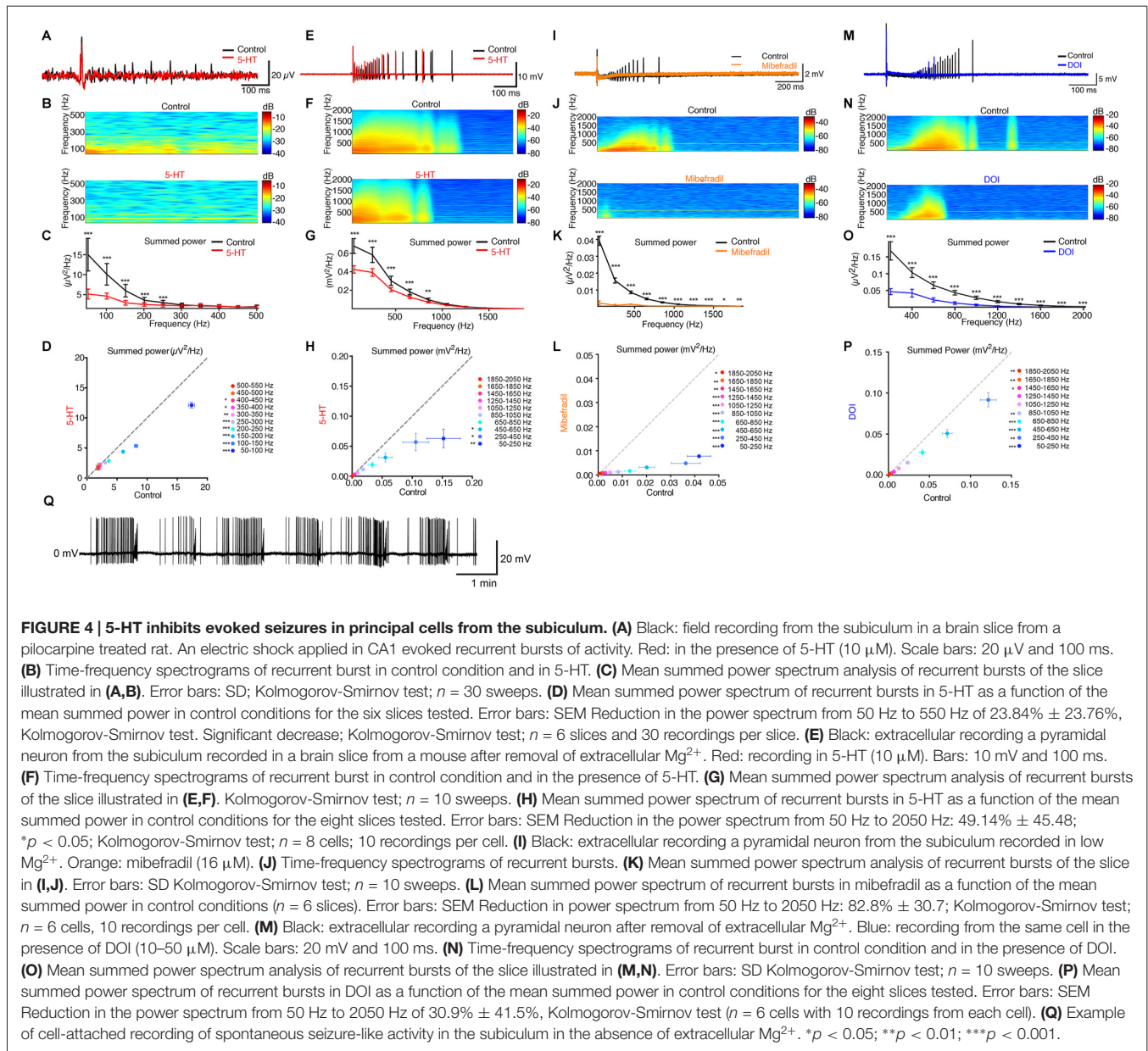
FIGURE 3 | 5-HT_{2C} receptor activation inhibits T-channels in subicular pyramidal neurons. (A) Response of a pyramidal cell to a depolarizing current pulse. The response consists of a burst (inset) followed by a train of action potentials. After puffing WAY 629 (10 μ M), the burst was inhibited. Scale bars: 20 mV and 1 s. (B) Time course of the modulation induced by the 5-HT_{2C} receptor agonists WAY 161503 (500 μ M) or WAY 629 (10 μ M). Number of action potentials present in each burst decreased for more than 15 s, -1.81 ± 1.99 Wilcoxon test; $p < 0.001$ ($n = 11$) and the membrane hyperpolarized (-1.90 ± 1.12 mV when tested 10 s after drug application; Wilcoxon test; $n = 12$). (C) Voltage-clamp recording of the isolated Ca²⁺ current in control (black) and after puffing WAY 161503 (blue). Scale bars: 500 pA and 100 ms. (D) Normalized amplitude of the Ca²⁺ current as a function of V_h in control (black) and after puffing WAY 161503 (blue). Significant decrease (Wilcoxon test; $n = 5$). (E–G) Images of the subiculum. (E) 5-HT_{2C} receptors are expressed on dendrites identified with the marker MAP2. Upward arrows indicate positive staining for both 5-HT_{2C} receptors and MAP2. Downward arrows indicate MAP2 staining without 5-HT_{2C} receptors. (F,G) 5-HT_{2C} receptors expressed in the processes where Cav3.1 and Cav3.3 channels are found. Scale bar: 5 μ m. * $p < 0.05$; ** $p < 0.01$; *** $p < 0.001$.

of the effect was caused by 5-HT_{2C} receptor activation, even though we cannot exclude the involvement of other serotonergic receptors. Since most of the hyperpolarization was inhibited by relatively low concentrations of mibefradil (Figures 2E,F), we concluded that it originated from the inhibition of a window T-current present at rest (Figure 1B). Blocking T-type Ca²⁺ channels also produces a hyperpolarization of thalamic neurons of 1–2 mV (Dreyfus et al., 2010) comparable to

the one reported here (Figures 2E,F). Such window currents indicate that bursts can be evoked from resting membrane potential.

Pathway Responsible for the Inhibition

5-HT_{2C} receptors are coupled to G proteins consisting of G α_q and G $\beta\gamma$ complex. G α induces phospholipase C (PLC) to hydrolyze phosphatidylinositol 4,5-bisphosphate (PIP₂) to inositol 1,4,5-



triphosphate (IP₃) and diacylglycerol (dAG). IP₃ triggers the release of Ca²⁺ from intracellular stores, which, together with dAG, activates protein kinase C (PKC). The activation of G_{αq} coupled receptors has been reported to inhibit Ca_v3 channels. In heterologous systems the G_{αq} coupled neurokinin 1 receptor induces the inhibition of recombinant Ca_v3.2 channels via a pathway that involves G_{αq}, PLC, and PKC (Rangel et al., 2010). In contrast, the G_{αq} coupled dopamine D1 receptor expressed in adenocarcinoma cell line H295R inhibits Ca_v3.2 channels via the G_{βγ} complex that binds to an intracellular loop of the Ca²⁺ channel (Wolfe et al., 2003). More experiments will be required for determining if the inhibitory pathway we uncovered in the subiculum involved any of these two molecular mechanisms.

Physiological Relevance

The modulatory pathway we uncovered could have profound effects for spike-timing-dependent plasticity in the subiculum. It was recently shown that the coincidence of bursts with excitatory synaptic inputs triggers LTD of synaptic transmission (Pandey and Sikdar, 2014). In contrast, when bursts are anti-causally paired with excitatory synaptic inputs, LTP is promoted. The selective inhibition of bursts could therefore inhibit LTD or LTP, depending on the relative timing of synaptic input and bursts. In addition to glutamate, subicular neurons express neurotensin (Roberts et al., 1984). The release of neuropeptides occurs only during high frequency discharge of presynaptic neurons (Bloom et al., 1987). In agreement, it was shown that mesocortical neurons

release neurotensin during bursts but not during low frequency firing (Bean and Roth, 1991). By inhibiting the burst firing, 5-HT could therefore primarily prevent the release of neurotensin without affecting the release of glutamate.

Antiepileptic Effect of Serotonin

Our data show that the activation of 5-HT_{2C} receptors decreases the occurrence of epileptiform discharges in the subiculum by inhibiting T-type Ca²⁺ channels responsible for the epileptic behavior of the temporal lobe (Yaari et al., 2007). By linking 5-HT receptors and T-type Ca²⁺ channels, we have uncovered a mechanism that unifies aspects of the pathology that until now were considered separately. TLE usually arises in the subiculum (Behr and Heinemann, 1996b; Harris and Stewart, 2001b; Cohen et al., 2002; Wellmer et al., 2002; Cavazos et al., 2004; Menendez de la Prida and Gal, 2004; Stafstrom, 2005; Wozny et al., 2005; Knopp et al., 2008).

Several observations indicate that 5-HT reduces the susceptibility to seizures occurring in TLE. An increase in concentration of 5-HT induced by blocking its reuptake from the extracellular space decreases the number of seizures (Prendiville and Gale, 1993; Yan et al., 1994; Bagdy et al., 2007; Buchanan et al., 2014). Conversely, drugs that decrease the concentration of 5-HT in the brain promote seizures in animal models of epilepsy (Wenger et al., 1973; Maynert et al., 1975; Lazarova et al., 1983), while knocking-out the gene encoding for 5-HT_{2C} receptors facilitates epileptic seizures (Tecott et al., 1995; Applegate and Tecott, 1998; Upton et al., 1998). In addition, the 5HT_{2C} agonist 3-Trifluoromethylphenylpiperazine (TFMPP) reduces spontaneous seizure activity in the pilocarpine model of TLE (Hernandez et al., 2002).

One of the long-term changes associated with mesial TLE is a strong increase in the proportion of bursting cells in the subiculum (Faas et al., 1996; Su et al., 2002; Wellmer et al., 2002; Yaari et al., 2007; Becker et al., 2008). Two strong arguments suggest a link of causality between T-type Ca²⁺ channels and TLE. First, epileptic seizures are initiated by bursting neurons in subiculum (Harris and Stewart, 2001a; Cohen et al., 2002; Menendez de la Prida and Gal, 2004). Second, after status epilepticus, regular firing hippocampal neurons acquire burst-firing properties caused by an upregulation of the T-current (Su et al., 2002). Serotonergic fibers projecting to the hippocampus originate mainly from the median raphe nucleus (Azmitia and Segal, 1978). They are characterized by a spontaneous regular discharge of action potentials (Jacobs and Azmitia, 1992) suggesting tonic release of 5-HT in the hippocampus. This release may prevent the occurrence of seizures under physiological conditions.

Both antiepileptic (Prendiville and Gale, 1993; Yan et al., 1994; Bagdy et al., 2007; Trivedi and Kurian, 2007; Buchanan et al., 2014) and proconvulsive (Rosenstein et al., 1993; Pisani et al., 1999; Trivedi and Kurian, 2007) effects

induced by antidepressors acting on the serotonergic system have been reported. How does this fit with our findings? A systematic review of the literature shows that the proconvulsive effects are induced by tetracyclic antidepressants such as Maprotiline or Amoxapine (Pisani et al., 1999) and tricyclic antidepressants such as Imipramine (Rosenstein et al., 1993). These molecules have high affinity for other targets such as norepinephrine transporter, alpha-1 adrenergic, histamine or muscarinic receptors and it is likely that their pro-convulsant activity is due to these latter actions (Montgomery, 2005). In contrast, selective serotonin re-uptake inhibitors (SSRIs) act specifically on 5-HT transporters. When tested on epileptic patients, they do not promote seizures more than placebos (Rosenstein et al., 1993; Pisani et al., 1999; Montgomery, 2005) but on the contrary decrease their occurrence (Favale et al., 1995, 2003; Kondziella and Asztely, 2009). Our results are therefore not in contradiction with the consensus that SSRIs do not significantly increase seizure frequency in epileptic patients (Trivedi and Kurian, 2007).

Our data suggest that the antiepileptic effect of 5-HT is caused by the selective inhibition of T-type Ca²⁺ channels. Different drugs such as Zonisamide or Trimethadione, acting as T-type channels blockers are commonly used for treating absence seizures. They have also proven to be efficient on several animal models of TLE (Löscher, 2002) as well as for patients suffering from partial and generalized epilepsy (Lancaster, 1980; Shorvon, 2010; Holder and Wilfong, 2011). By linking 5-HT receptors and T-type Ca²⁺ channels, we have uncovered a mechanism that unifies aspects of the pathology that until now were considered separately. The physiological mechanism might be used as a new strategy for treating TLE patients and people with a high risk of developing TLE such as children with febrile seizures (Patterson et al., 2014).

AUTHOR CONTRIBUTIONS

AVP and J-FP designed and conceived the experiments. AVP performed the electrophysiology experiments. CSJ and AVP performed the immunohistochemical stainings. J-FP supervised all the experiments. VC co-supervised the experiments on pilocarpine treated animals. AVP and J-FP wrote and prepared the manuscript. All authors reviewed the manuscript.

ACKNOWLEDGMENTS

We thank Dr. A. Perret for providing pilocarpine treated rats and Pr. J. Hounsgaard and Dr. H. Jahnsen for their comments. This work was supported by Inge Berthelsens legat Fonden, Owensenske Fond, Simon Fougner Hartmanns Familiefond, Agnes and Poul Friis Fond, Novo Scholarship Programme, Augustinus Foundation, Lundbeck Foundation, Carlsbergfondet, Læge Sofus Carl Emil Friis og Hustru Olga Doris Friis' Legat and INSERM.

REFERENCES

- Andersen, P. (2007). *The Hippocampus Book*. Oxford: Oxford University Press.
- Andrade, R., and Nicoll, R. A. (1987). Pharmacologically distinct actions of serotonin on single pyramidal neurones of the rat hippocampus recorded *in vitro*. *J. Physiol.* 394, 99–124. doi: 10.1113/jphysiol.1987.sp016862
- Applegate, C. D., and Tecott, L. H. (1998). Global increases in seizure susceptibility in mice lacking 5-HT_{2C} receptors: a behavioral analysis. *Exp. Neurol.* 154, 522–530. doi: 10.1006/exnr.1998.6901
- Azmitia, E. C., and Segal, M. (1978). An autoradiographic analysis of the differential ascending projections of the dorsal and median raphe nuclei in the rat. *J. Comp. Neurol.* 179, 641–667. doi: 10.1002/cne.901790311
- Bagdy, G., Kecskemeti, V., Riba, P., and Jakus, R. (2007). Serotonin and epilepsy. *J. Neurochem.* 100, 857–873. doi: 10.1111/j.1471-4159.2006.04277.x
- Bean, A. J., and Roth, R. H. (1991). Extracellular dopamine and neurotensin in rat prefrontal cortex *in vivo*: effects of median forebrain bundle stimulation frequency, stimulation pattern, and dopamine autoreceptors. *J. Neurosci.* 11, 2694–2702.
- Becker, A. J., Pitsch, J., Sochivko, D., Opitz, T., Staniek, M., Chen, C. C., et al. (2008). Transcriptional upregulation of Ca_v3.2 mediates epileptogenesis in the pilocarpine model of epilepsy. *J. Neurosci.* 28, 13341–13353. doi: 10.1523/JNEUROSCI.1421-08.2008
- Behr, J., and Heinemann, U. (1996a). Effects of serotonin on different patterns of low Mg²⁺-induced epileptiform activity in the subiculum of rats studied *in vitro*. *Brain Res.* 737, 331–334. doi: 10.1016/0006-8993(96)00946-8
- Behr, J., and Heinemann, U. (1996b). Low Mg²⁺ induced epileptiform activity in the subiculum before and after disconnection from rat hippocampal and entorhinal cortex slices. *Neurosci. Lett.* 205, 25–28. doi: 10.1016/0304-3940(96)12360-0
- Bloom, S. R., Edwards, A. V., and Garrett, J. R. (1987). Effects of stimulating the sympathetic innervation in bursts on submandibular vascular and secretory function in cats. *J. Physiol.* 393, 91–106. doi: 10.1113/jphysiol.1987.sp016812
- Buchanan, G. F., Murray, N. M., Hajek, M. A., and Richerson, G. B. (2014). Serotonin neurones have anti-convulsant effects and reduce seizure-induced mortality. *J. Physiol.* 592, 4395–4410. doi: 10.1113/jphysiol.2014.277574
- Cavazos, J. E., Jones, S. M., and Cross, D. J. (2004). Sprouting and synaptic reorganization in the subiculum and CA1 region of the hippocampus in acute and chronic models of partial-onset epilepsy. *Neuroscience* 126, 677–688. doi: 10.1016/s0306-4522(04)00282-9
- Cohen, I., Navarro, V., Clemenceau, S., Baulac, M., and Miles, R. (2002). On the origin of interictal activity in human temporal lobe epilepsy *in vitro*. *Science* 298, 1418–1421. doi: 10.1126/science.1076510
- Colling, S. B., Stanford, I. M., Traub, R. D., and Jefferys, J. G. (1998). Limbic gamma rhythms. I. Phase-locked oscillations in hippocampal CA1 and subiculum. *J. Neurophysiol.* 80, 155–161.
- Dreyfus, F. M., Tschertner, A., Errington, A. C., Renger, J. J., Shin, H. S., Uebele, V. N., et al. (2010). Selective T-type calcium channel block in thalamic neurons reveals channel redundancy and physiological impact of *I*_{Twindow}. *J. Neurosci.* 30, 99–109. doi: 10.1523/JNEUROSCI.4305-09.2010
- Faas, G. C., Vreugdenhil, M., and Wadman, W. J. (1996). Calcium currents in pyramidal CA1 neurons *in vitro* after kindling epileptogenesis in the hippocampus of the rat. *Neuroscience* 75, 57–67. doi: 10.1016/0306-4522(96)00254-0
- Favale, E., Audenino, D., Cocito, L., and Albano, C. (2003). The anticonvulsant effect of citalopram as an indirect evidence of serotonergic impairment in human epileptogenesis. *Seizure* 12, 316–318. doi: 10.1016/s1059-1311(02)00315-1
- Favale, E., Rubino, V., Mainardi, P., Lunardi, G., and Albano, C. (1995). Anticonvulsant effect of fluoxetine in humans. *Neurology* 45, 1926–1927. doi: 10.1212/WNL.45.10.1926
- Galani, R., Weiss, I., Cassel, J. C., and Kelche, C. (1998). Spatial memory, habituation and reactions to spatial and nonspatial changes in rats with selective lesions of the hippocampus, the entorhinal cortex or the subiculum. *J. Psychiatr. Res.* 96, 1–12. doi: 10.1016/s0166-4328(97)00197-6
- Harris, E., and Stewart, M. (2001a). Intrinsic connectivity of the rat subiculum: II. Properties of synchronous spontaneous activity and a demonstration of multiple generator regions. *J. Comp. Neurol.* 435, 506–518. doi: 10.1002/cne.1047
- Harris, E., and Stewart, M. (2001b). Propagation of synchronous epileptiform events from subiculum backward into area CA1 of rat brain slices. *Brain Res.* 895, 41–49. doi: 10.1016/s0006-8993(01)02023-6
- Hernandez, E. J., Williams, P. A., and Dudek, F. E. (2002). Effects of fluoxetine and TFMP on spontaneous seizures in rats with pilocarpine-induced epilepsy. *Epilepsia* 43, 1337–1345. doi: 10.1046/j.1528-1157.2002.48701.x
- Holder, J. L. Jr., and Wilfong, A. A. (2011). Zonisamide in the treatment of epilepsy. *Expert Opin. Pharmacother.* 12, 2573–2581. doi: 10.1517/14656566.2011.622268
- Jacobs, B. L., and Azmitia, E. C. (1992). Structure and function of the brain serotonin system. *Physiol. Rev.* 72, 165–229.
- Jung, H. Y., Staff, N. P., and Spruston, N. (2001). Action potential bursting in subicular pyramidal neurons is driven by a calcium tail current. *J. Neurosci.* 21, 3312–3321.
- Knopp, A., Frahm, C., Fidzinski, P., Witte, O. W., and Behr, J. (2008). Loss of GABAergic neurons in the subiculum and its functional implications in temporal lobe epilepsy. *Brain* 131, 1516–1527. doi: 10.1093/brain/awn095
- Kondziella, D., and Asztely, F. (2009). Don't be afraid to treat depression in patients with epilepsy! *Acta Neurol. Scand.* 119, 75–80. doi: 10.1111/j.1600-0404.2008.01088.x
- Lancaster, R. (1980). *Pharmacology in Clinical Practice*. 1st Edn. Amsterdam: Elsevier.
- Lazarova, M., Bendotti, C., and Samanin, R. (1983). Studies on the role of serotonin in different regions of the rat central nervous system on pentylenetetrazol-induced seizures and the effect of di-n-propylacetate. *Naunyn Schmiedeberg's Arch. Pharmacol.* 322, 147–152. doi: 10.1007/bf00512388
- Linás, R., and Yarom, Y. (1981). Properties and distribution of ionic conductances generating electroresponsiveness of mammalian inferior olivary neurones *in vitro*. *J. Physiol.* 315, 569–584. doi: 10.1113/jphysiol.1981.sp013764
- Löscher, W. (2002). Animal models of epilepsy for the development of antiepileptogenic and disease-modifying drugs. A comparison of the pharmacology of kindling and post-status epilepticus models of temporal lobe epilepsy. *Epilepsy Res.* 50, 105–123. doi: 10.1016/s0920-1211(02)00073-6
- Mason, A. (1993). Electrophysiology and burst-firing of rat subicular pyramidal neurons *in vitro*: a comparison with area CA1. *Brain Res.* 600, 174–178. doi: 10.1016/0006-8993(93)90418-m
- Maynert, E. W., Marczyński, T. J., and Browning, R. A. (1975). The role of the neurotransmitters in the epilepsies. *Adv. Neurol.* 13, 79–147.
- Menendez de la Prida, L., and Gal, B. (2004). Synaptic contributions to focal and widespread spatiotemporal dynamics in the isolated rat subiculum *in vitro*. *J. Neurosci.* 24, 5525–5536. doi: 10.1523/JNEUROSCI.0309-04.2004
- Montgomery, S. A. (2005). Antidepressants and seizures: emphasis on newer agents and clinical implications. *Int. J. Clin. Pract.* 59, 1435–1440. doi: 10.1111/j.1368-5031.2005.00731.x
- Morris, R. G., Schenk, F., Tweedie, F., and Jarrard, L. E. (1990). Ibotenate lesions of hippocampus and/or subiculum: dissociating components of allocentric spatial learning. *Eur. J. Neurosci.* 2, 1016–1028. doi: 10.1111/j.1460-9568.1990.tb00014.x
- Naber, P. A., and Witter, M. P. (1998). Subicular efferents are organized mostly as parallel projections: a double-labeling, retrograde-tracing study in the rat. *J. Comp. Neurol.* 393, 284–297. doi: 10.1002/(SICI)1096-9861(19980413)393:3<284::AID-CNE2>3.0.CO;2-Y
- Oleskevich, S., and Descarries, L. (1990). Quantified distribution of the serotonin innervation in adult rat hippocampus. *Neuroscience* 34, 19–33. doi: 10.1016/0306-4522(90)90301-j
- O'Mara, S. M., Commins, S., and Anderson, M. (2000). Synaptic plasticity in the hippocampal area CA1-subiculum projection: implications for theories of memory. *Hippocampus* 10, 447–456. doi: 10.1002/1098-1063(2000)10:4<447::AID-HIPO11>3.3.CO;2-U
- O'Mara, S. M., Commins, S., Anderson, M., and Gigg, J. (2001). The subiculum: a review of form, physiology and function. *Prog. Neurobiol.* 64, 129–155. doi: 10.1016/s0301-0082(00)00054-x
- Pandey, A., and Sikdar, S. K. (2014). Depression biased non-Hebbian spike-timing-dependent synaptic plasticity in the rat subiculum. *J. Physiol.* 592, 3537–3557. doi: 10.1113/jphysiol.2014.273367
- Patterson, K. P., Baram, T. Z., and Shinnar, S. (2014). Origins of temporal lobe epilepsy: febrile seizures and febrile status epilepticus. *Neurotherapeutics* 11, 242–250. doi: 10.1007/s13311-014-0263-4

- Pisani, F., Spina, E., and Oteri, G. (1999). Antidepressant drugs and seizure susceptibility: from *in vitro* data to clinical practice. *Epilepsia* 40, S48–S56. doi: 10.1111/j.1528-1157.1999.tb00885.x
- Prendiville, S., and Gale, K. (1993). Anticonvulsant effect of fluoxetine on focally evoked limbic motor seizures in rats. *Epilepsia* 34, 381–384. doi: 10.1111/j.1528-1157.1993.tb02425.x
- Randall, A. D., and Tsien, R. W. (1997). Contrasting biophysical and pharmacological properties of T-type and R-type calcium channels. *Neuropharmacology* 36, 879–893. doi: 10.1016/s0028-3908(97)00086-5
- Rangel, A., Sánchez-Armass, S., and Meza, U. (2010). Protein kinase C-mediated inhibition of recombinant T-type Cav3.2 channels by neurokinin 1 receptors. *Mol. Pharmacol.* 77, 202–210. doi: 10.1124/mol.109.058727
- Roberts, G. W., Woodhams, P. L., Polak, J. M., and Crow, T. J. (1984). Distribution of neuropeptides in the limbic system of the rat: the hippocampus. *Neuroscience* 11, 35–77. doi: 10.1016/0306-4522(84)90214-8
- Rosenstein, D. L., Nelson, J. C., and Jacobs, S. C. (1993). Seizures associated with antidepressants: a review. *J. Clin. Psychiatry* 54, 289–299.
- Sharp, P. E., and Green, C. (1994). Spatial correlates of firing patterns of single cells in the subiculum of the freely moving rat. *J. Neurosci.* 14, 2339–2356.
- Shorvon, S. D. (Ed.) (2010). “The antiepileptic drugs,” in *Handbook of Epilepsy Treatment*, (Hoboken, NJ: Wiley-Blackwell), 158–286.
- Stafstrom, C. E. (2005). The role of the subiculum in epilepsy and epileptogenesis. *Epilepsy Curr.* 5, 121–129. doi: 10.1111/j.1535-7511.2005.00049.x
- Stewart, M., and Wong, R. K. (1993). Intrinsic properties and evoked responses of guinea pig subicular neurons *in vitro*. *J. Neurophysiol.* 70, 232–245.
- Su, H., Sochivko, D., Becker, A., Chen, J., Jiang, Y., Yaari, Y., et al. (2002). Upregulation of a T-type Ca²⁺ channel causes a long-lasting modification of neuronal firing mode after status epilepticus. *J. Neurosci.* 22, 3645–3655.
- Taube, J. S. (1993). Electrophysiological properties of neurons in the rat subiculum *in vitro*. *Exp. Brain Res.* 96, 304–318. doi: 10.1007/bf00227110
- Tecott, L. H., Sun, L. M., Akana, S. F., Strack, A. M., Lowenstein, D. H., Dallman, M. F., et al. (1995). Eating disorder and epilepsy in mice lacking 5-HT_{2C} serotonin receptors. *Nature* 374, 542–546. doi: 10.1038/374542a0
- Toselli, M., and Taglietti, V. (1992). Kinetic and pharmacological properties of high- and low-threshold calcium channels in primary cultures of rat hippocampal neurons. *Pflugers Arch.* 421, 59–66. doi: 10.1007/bf00374734
- Trivedi, M. H., and Kurian, B. T. (2007). Managing depressive disorders in patients with epilepsy. *Psychiatry (Edmont)* 4, 26–34.
- Upton, N., Stean, T., Middlemiss, D., Blackburn, T., and Kennett, G. (1998). Studies on the role of 5-HT_{2C} and 5-HT_{2B} receptors in regulating generalised seizure threshold in rodents. *Eur. J. Pharmacol.* 359, 33–40. doi: 10.1016/s0014-2999(98)00621-9
- Wellmer, J., Su, H., Beck, H., and Yaari, Y. (2002). Long-lasting modification of intrinsic discharge properties in subicular neurons following status epilepticus. *Eur. J. Neurosci.* 16, 259–266. doi: 10.1046/j.1460-9568.2002.02086.x
- Wenger, G. R., Stitzel, R. E., and Craig, C. R. (1973). The role of biogenic amines in the reserpine-induced alteration of minimal electroshock seizure thresholds in the mouse. *Neuropharmacology* 12, 693–703. doi: 10.1016/0028-3908(73)90122-6
- Wolfe, J. T., Wang, H., Howard, J., Garrison, J. C., and Barrett, P. Q. (2003). T-type calcium channel regulation by specific G-protein $\beta\gamma$ subunits. *Nature* 424, 209–213. doi: 10.1038/nature01772
- Wozny, C., Knopp, A., Lehmann, T. N., Heinemann, U., and Behr, J. (2005). The subiculum: a potential site of ictogenesis in human temporal lobe epilepsy. *Epilepsia* 46, 17–21. doi: 10.1111/j.1528-1167.2005.01066.x
- Wozny, C., Maier, N., Schmitz, D., and Behr, J. (2008). Two different forms of long-term potentiation at CA1-subiculum synapses. *J. Physiol.* 586, 2725–2734. doi: 10.1113/jphysiol.2007.149203
- Yaari, Y., Yue, C., and Su, H. (2007). Recruitment of apical dendritic T-type Ca²⁺ channels by backpropagating spikes underlies *de novo* intrinsic bursting in hippocampal epileptogenesis. *J. Physiol.* 580, 435–450. doi: 10.1113/jphysiol.2007.127670
- Yan, Q. S., Jobe, P. C., Cheong, J. H., Ko, K. H., and Dailey, J. W. (1994). Role of serotonin in the anticonvulsant effect of fluoxetine in genetically epilepsy-prone rats. *Naunyn Schmiedeberg's Arch. Pharmacol.* 350, 149–152. doi: 10.1007/bf00241089
- Zhao, S., Ting, J. T., Atallah, H. E., Qiu, L., Tan, J., Gloss, B., et al. (2011). Cell type-specific channelrhodopsin-2 transgenic mice for optogenetic dissection of neural circuitry function. *Nat. Methods* 8, 745–752. doi: 10.1038/nmeth.1668

Conflict of Interest Statement: The authors declare that the research was conducted in the absence of any commercial or financial relationships that could be construed as a potential conflict of interest.

Copyright © 2017 Petersen, Jensen, Crépel, Falkerslev and Perrier. This is an open-access article distributed under the terms of the Creative Commons Attribution License (CC BY). The use, distribution and reproduction in other forums is permitted, provided the original author(s) or licensor are credited and that the original publication in this journal is cited, in accordance with accepted academic practice. No use, distribution or reproduction is permitted which does not comply with these terms.