



**HAL**  
open science

## Insights into the Crystallization and Structural Evolution of Glycine Dihydrate by In Situ Solid-State NMR Spectroscopy

Paolo Cerreia Vioglio, Giulia Mollica, Marie Juramy, Colan E. Hughes, P. Andrew Williams, Fabio Ziarelli, Stephane Viel, Pierre Thureau, Kenneth D. M. Harris

### ► To cite this version:

Paolo Cerreia Vioglio, Giulia Mollica, Marie Juramy, Colan E. Hughes, P. Andrew Williams, et al.. Insights into the Crystallization and Structural Evolution of Glycine Dihydrate by In Situ Solid-State NMR Spectroscopy. *Angewandte Chemie International Edition*, 2018, 57 (22), pp.6619–6623. 10.1002/anie.201801114 . hal-02091904

HAL Id: hal-02091904

<https://amu.hal.science/hal-02091904v1>

Submitted on 28 Dec 2020

**HAL** is a multi-disciplinary open access archive for the deposit and dissemination of scientific research documents, whether they are published or not. The documents may come from teaching and research institutions in France or abroad, or from public or private research centers.

L'archive ouverte pluridisciplinaire **HAL**, est destinée au dépôt et à la diffusion de documents scientifiques de niveau recherche, publiés ou non, émanant des établissements d'enseignement et de recherche français ou étrangers, des laboratoires publics ou privés.



Distributed under a Creative Commons Attribution 4.0 International License

## Crystallization

International Edition: DOI: 10.1002/anie.201801114

German Edition: DOI: 10.1002/ange.201801114

## Insights into the Crystallization and Structural Evolution of Glycine Dihydrate by In Situ Solid-State NMR Spectroscopy

Paolo Cerreia Vioglio, Giulia Mollica, Marie Juramy, Colan E. Hughes, P. Andrew Williams, Fabio Ziarelli, Stéphane Viel, Pierre Thureau,\* and Kenneth D. M. Harris\*

**Abstract:** *In situ solid-state NMR spectroscopy is exploited to monitor the structural evolution of a glycine/water glass phase formed on flash cooling an aqueous solution of glycine, with a range of modern solid-state NMR methods applied to elucidate structural properties of the solid phases present. The glycine/water glass is shown to crystallize into an intermediate phase, which then transforms to the  $\beta$  polymorph of glycine. Our in situ NMR results fully corroborate the identity of the intermediate crystalline phase as glycine dihydrate, which was first proposed only very recently.*

**P**olymorphism in glycine was first observed, although not fully understood, by Fischer in 1905.<sup>[1]</sup> Although originally ascribed to possible isomerism, his observations are now attributed to the existence of the  $\alpha$  and  $\beta$  polymorphs of glycine.<sup>[2]</sup> A third polymorph ( $\gamma$  polymorph) was discovered in 1954.<sup>[3]</sup> Except for three further polymorphs formed at high pressure,<sup>[4]</sup> no new solid form of glycine was reported until over 60 years later, with the very exciting discovery and structural characterization of a crystalline dihydrate of glycine, reported by Xu et al. in 2017.<sup>[5]</sup>

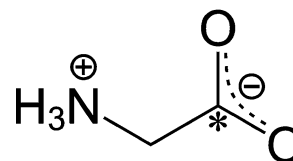
In general, crystallization of glycine from pure aqueous solution at neutral pH gives the  $\alpha$  polymorph,<sup>[6]</sup> which transforms to the stable  $\gamma$  polymorph over time.<sup>[7]</sup> Crystallization from water in nano-confined environments promotes the formation of the  $\beta$  polymorph.<sup>[8]</sup> In spite of extensive studies, no hydrated crystalline phase of glycine was reported until the recent study by Xu et al.<sup>[5]</sup> In contrast, hydrate phases of several other amino acids are well known,<sup>[9]</sup> and interconversion processes between anhydrous and hydrate phases have been studied in detail.<sup>[9c,f]</sup> For certain amino acids

(e.g., L-lysine and L-arginine), the anhydrous solid form is very hygroscopic and transforms readily to a hydrate phase under normal atmospheric conditions.<sup>[10]</sup>

The recent work<sup>[5]</sup> that proved the existence of glycine dihydrate (GDH) relied on a preparation procedure reported by Pyne and Suryanarayanan<sup>[11]</sup> and later by Surovtsev et al.<sup>[12]</sup> In this procedure, an aqueous solution of glycine is quench frozen in liquid nitrogen to form a glycine/water glass phase (frozen solution). When this glass phase is warmed to around 209 K and held at this temperature, crystallization occurs to give a new solid phase. Xu et al.<sup>[5]</sup> prepared the new crystalline phase in situ in a synchrotron powder X-ray diffractometer and determined the structure directly from the powder XRD data, revealing that the new phase is a dihydrate of glycine. It was also shown<sup>[5]</sup> that, on heating above 250 K, this phase transforms to the  $\beta$  polymorph of glycine with loss of water.

In the present work, the procedure reported previously<sup>[5,11,12]</sup> has been carried out inside an NMR spectrometer, exploiting in situ solid-state NMR techniques to monitor the structural evolution, as a function of temperature and time, of the glycine/water glass formed after flash cooling an aqueous solution of glycine. In recent years, in situ NMR techniques for monitoring crystallization processes have been applied to a range of systems,<sup>[13]</sup> including crystallization of glycine from aqueous solution near ambient temperature.<sup>[13a,b]</sup> A significant advantage of solid-state NMR spectroscopy for in situ studies of such processes is that it allows the identification and characterization of both amorphous and crystalline phases. Thus, the in situ solid-state NMR study presented here offers the prospect of monitoring details of the structural evolution from the glycine/water glass phase to the dihydrate of glycine and then to the  $\beta$  polymorph of glycine. Furthermore, a range of modern solid-state NMR techniques are exploited to elucidate specific structural aspects of the solid phases present at different stages of the process.

Our in situ solid-state <sup>13</sup>C NMR study used a sample of glycine <sup>13</sup>C-labelled in the carboxylate group (1-<sup>13</sup>C-glycine; Scheme 1); thus, we focus on the carboxylate region of the <sup>13</sup>C NMR data. An aqueous solution (1.8 M) of 1-<sup>13</sup>C-glycine



**Scheme 1.** Molecular structure of glycine (the asterisk indicates the labelled <sup>13</sup>C site in 1-<sup>13</sup>C-glycine).

[\*] P. Cerreia Vioglio, Dr. G. Mollica, M. Juramy, Prof. S. Viel, Dr. P. Thureau

Aix Marseille Univ, CNRS, ICR  
Marseille (France)

E-mail: pierre.thureau@univ-amu.fr

Dr. C. E. Hughes, Dr. P. A. Williams, Prof. K. D. M. Harris

School of Chemistry, Cardiff University  
Park Place, Cardiff, Wales, CF10 3AT (UK)

E-mail: HarrisKDM@cardiff.ac.uk

Dr. F. Ziarelli

Aix Marseille Univ, CNRS, Centrale Marseille, FSCM  
Marseille (France)

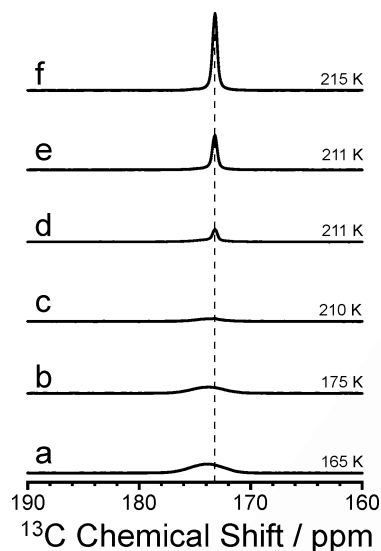
Prof. S. Viel  
Institut Universitaire de France  
Paris (France)

Supporting information and the ORCID identification number(s) for

the author(s) of this article can be found under:

<https://doi.org/10.1002/anie.201801114>

prepared at ambient temperature was flash cooled in a few seconds to ca. 145 K inside the NMR spectrometer. The frozen glycine/water solution was then warmed slowly ( $2 \text{ K min}^{-1}$ ) and  $^1\text{H} \rightarrow ^{13}\text{C}$  CPMAS NMR spectra were recorded (MAS frequency,  $8 \text{ kHz}^{[14]}$ ) at several (fixed) temperatures during warming (Figure 1). At lower temper-

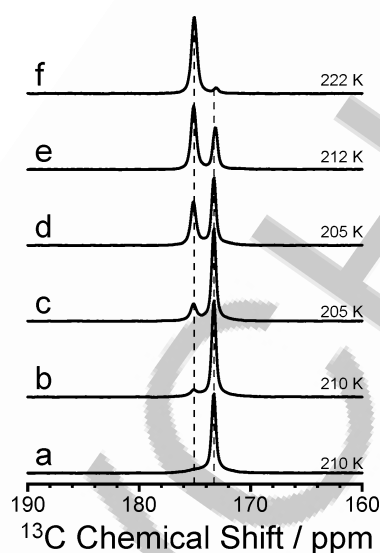


**Figure 1.**  $^1\text{H} \rightarrow ^{13}\text{C}$  CPMAS NMR spectra for an aqueous solution of  $1\text{-}^{13}\text{C}$ -glycine following flash cooling to 145 K and then slow warming to 215 K. The spectra were recorded at: (a) 165 K, (b) 175 K, (c) 210 K, (d) 211 K (recorded immediately on reaching this temperature), (e) 211 K (recorded after 3 min at this temperature) and (f) 215 K (recorded after 25 min at this temperature).

atures (e.g., 165 K; Figure 1a), a broad signal centered at 173.9 ppm is observed and is attributed to the glycine/water glass phase. However, on warming to 211 K, a significantly sharper peak appears at 173.5 ppm, with gradual loss of the broad peak due to the glass phase. The position of the sharp peak does not match the  $^{13}\text{C}$  NMR spectra of the  $\alpha$ ,  $\beta$ , or  $\gamma$  polymorphs of glycine under similar operating conditions (see Figure S1 and Table S1; Supporting Information).

Similar behavior is observed in in situ  $^1\text{H} \rightarrow ^{15}\text{N}$  CPMAS NMR spectra for an aqueous solution (1.8M) of  $^{15}\text{N}$ -labelled glycine subjected to the same temperature schedule (Figure S3). The isotropic  $^{15}\text{N}$  chemical shift (30.3 ppm) of the crystalline phase that emerges at 211 K is clearly distinct from those of the  $\alpha$ ,  $\beta$  and  $\gamma$  polymorphs of glycine (Figure S2 and Table S2).<sup>[15]</sup>

The results from another in situ solid-state  $^{13}\text{C}$  NMR study at a different set of temperatures are shown in Figure 2. After flash cooling the aqueous solution of  $1\text{-}^{13}\text{C}$ -glycine and then warming to 210 K, the sharp peak due to the new crystalline phase again appears at 173.5 ppm (Figure 2a). However, after a total of 375 min at 210 K, a new peak emerges at 175.3 ppm, characteristic of the  $\beta$  polymorph (Figure 2b). The transformation to the  $\beta$  polymorph continues even on reducing the temperature to 205 K (Figure 2c,d) and continues more rapidly at higher temperatures (Figure 2e,f). By the end of



**Figure 2.**  $^1\text{H} \rightarrow ^{13}\text{C}$  CPMAS NMR spectra for an aqueous solution of  $1\text{-}^{13}\text{C}$ -glycine following flash cooling to 145 K and then slow warming to 210 K. The spectra were recorded according to the following time/temperature sequence: (a) after 150 min at 210 K, (b) after a further 225 min at 210 K, (c) after 360 min at 205 K, (d) after a further 285 min at 205 K, (e) after 50 min at 210 K and then 50 min at 212 K, and (f) after 50 min at 222 K.

the experiment (at 222 K), the transformation to the  $\beta$  polymorph is virtually complete.

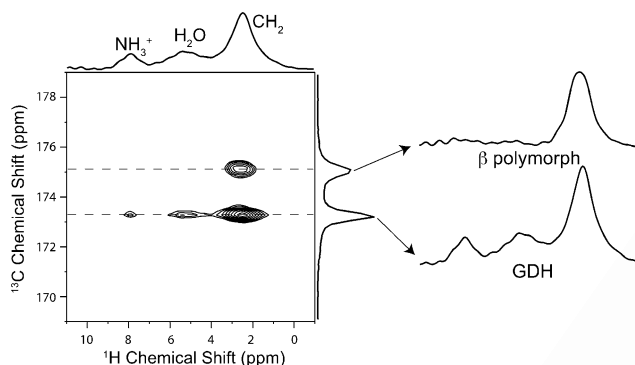
The evolution of the solid crystalline phases observed in our in situ solid-state NMR studies mirrors the behavior reported in the powder XRD study of Xu et al.<sup>[5]</sup> In their work, using the same procedure<sup>[11,12]</sup> of flash cooling an aqueous solution of glycine below 145 K followed by slow warming to 209 K, a new powder XRD pattern was observed and the crystal structure of the new crystalline phase was determined from the powder XRD data as a dihydrate of glycine (GDH). On further warming of the sample to 250 K, the powder XRD pattern of GDH disappeared and was replaced by that of the  $\beta$  polymorph of glycine.<sup>[5,16]</sup> Given the similarity between our results and those of Xu et al.<sup>[5]</sup> concerning the evolution of solid phases starting from the glycine/water glass phase, progressing to a new crystalline phase and then to the  $\beta$  polymorph of glycine, we conclude that the new crystalline phase giving the  $^{13}\text{C}$  NMR signal at 173.5 ppm and the  $^{15}\text{N}$  NMR signal at 30.3 ppm in our work is GDH.

We now consider specific structural aspects of GDH inferred from our in situ NMR studies and results from additional NMR experiments, which further support this assignment.

First, the reported crystal structure of GDH<sup>[5]</sup> has one molecule of glycine in the asymmetric unit ( $Z' = 1$ ). Our solid-state NMR results are fully consistent with this assignment, as the  $^1\text{H} \rightarrow ^{13}\text{C}$  and  $^1\text{H} \rightarrow ^{15}\text{N}$  CPMAS NMR spectra of GDH contain only one isotropic peak for each of the  $\text{CO}_2^-$ ,  $\text{CH}_2$  and  $\text{NH}_3^+$  environments.

Second, a significant feature of the reported crystal structure of GDH<sup>[5]</sup> is that glycine molecules are hydrogen-bonded only to water molecules, with no direct glycine-

glycine hydrogen-bonding. To investigate whether the material assigned as GDH in our in situ NMR study is consistent with this feature, we have carried out 2D  $^1\text{H}$ - $^{13}\text{C}$  and  $^1\text{H}$ - $^{15}\text{N}$  HETCOR experiments at 212 K (Figures 3 and S4, respec-



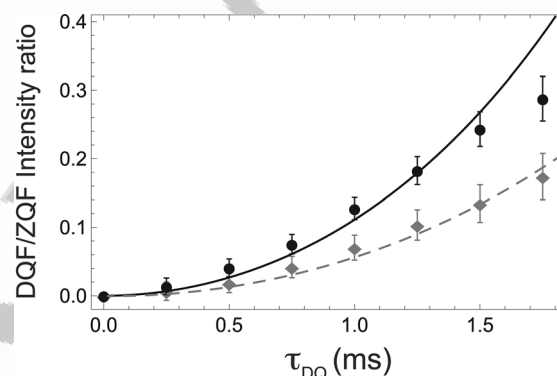
**Figure 3.**  $^1\text{H}$ - $^{13}\text{C}$  HETCOR spectrum recorded at 212 K after flash cooling an aqueous solution of  $1\text{-}^{13}\text{C}$ -glycine to 145 K and then slow warming to 212 K. Homonuclear  $^1\text{H}$  decoupling was applied during  $t_1$  and a mixing time of 0.5 ms was used under Lee-Goldburg conditions. This spectrum was recorded during the in situ study shown in Figure 2 (corresponding to the period of 50 min at which the sample was at 212 K; see caption of Figure 2 e). Clearly some transformation of GDH into the  $\beta$  polymorph occurred during measurement of this spectrum (as confirmed from  $^1\text{H}$ - $^{13}\text{C}$  CPMAS NMR spectra recorded before and after the  $^1\text{H}$ - $^{13}\text{C}$  HETCOR experiment). The extracted  $^1\text{H}$  NMR spectra of GDH and the  $\beta$  polymorph are shown at the right hand side ( $^1\text{H}$  chemical shifts of GDH: 2.5 ppm,  $\text{CH}_2$ : 8 ppm,  $\text{NH}_3^+$ : 5 ppm,  $\text{H}_2\text{O}$ ).

tively) on this material and the material (assigned as the  $\beta$  polymorph) to which it transforms over time. In the  $^1\text{H}$ - $^{13}\text{C}$  HETCOR spectrum (Figure 3), a strong correlation peak is observed between the  $\text{CO}_2^-$  group of glycine ( $^{13}\text{C}$ ) and water molecules ( $^1\text{H}$ ), consistent with glycine and water molecules in intimate proximity in a crystalline phase. In contrast, for the phase ( $\beta$  polymorph) into which GDH transforms over time, no correlation peak is observed between the carboxylate group of glycine ( $^{13}\text{C}$ ) and water molecules ( $^1\text{H}$ ), fully consistent with the assignment that this phase is not a hydrate phase of glycine. Together with the other evidence presented above, these observations are fully consistent with the assignment that the initially formed crystalline phase is GDH, which transforms over time to the (anhydrous)  $\beta$  polymorph of glycine. We note that, for the  $\beta$  polymorph, no correlation peak is observed between  $^1\text{H}$  in the  $\text{NH}_3^+$  group and  $^{13}\text{C}$  in the  $\text{CO}_2^-$  group as a consequence of rotational motion of the  $\text{NH}_3^+$  group. As discussed in SI, three resonances are observed for the  $\text{NH}_3^+$  group in the  $^1\text{H}$  NMR spectrum of the  $\beta$  polymorph at 200 K, but coalescence occurs in the temperature regime around 212 K due to rotation of the  $\text{NH}_3^+$  group, producing a very broad peak that is not seen in the contour plot in Figure 3. We note that rotational dynamics of  $\text{NH}_3^+$  groups has been observed for several amino acids in the solid state,<sup>[17]</sup> including the  $\alpha$  and  $\gamma$  polymorphs of glycine.<sup>[17a,d]</sup>

The corresponding  $^1\text{H}$ - $^{15}\text{N}$  HETCOR spectrum (Figure S4) also shows a correlation peak between the  $\text{NH}_3^+$

group of glycine ( $^{15}\text{N}$ ) and water molecules ( $^1\text{H}$ ), further supporting our assignment that the initially formed crystalline phase contains glycine and water molecules in intimate proximity and consistent with the assignment of this phase as GDH.

Finally, we show that studies of  $^{13}\text{C}$ - $^{13}\text{C}$  dipolar coupling<sup>[18]</sup> allow a more direct structural assignment of the new crystalline phase as GDH. In this work, experimental  $^{13}\text{C}$ - $^{13}\text{C}$  dipolar build-up curves were recorded using the POST-C7 recoupling pulse sequence,<sup>[19]</sup> with phase cycling of the reconversion block adjusted to filter zero quantum (ZQF) or double quantum (DQF) signals. The DQF/ZQF intensity ratio provides an experimental dipolar build-up curve that may be compared to the theoretical  $^{13}\text{C}$ - $^{13}\text{C}$  dipolar build-up curve calculated for a crystal structure using well-established methods.<sup>[18,20]</sup> Figure 4 shows the experimental  $^{13}\text{C}$ - $^{13}\text{C}$  dipolar



**Figure 4.** Experimental  $^{13}\text{C}$ - $^{13}\text{C}$  DQF/ZQF dipolar build-up curves plotted against recoupling time  $\tau_{\text{DQ}}$  for GDH ( $\blacklozenge$ ) and the  $\alpha$  polymorph ( $\bullet$ ), in each case containing  $1\text{-}^{13}\text{C}$ -glycine. Theoretical DQF/ZQF dipolar build-up curves calculated for the crystal structures of GDH (grey dashed line) and the  $\alpha$  polymorph (black line) are also shown.

build-up curve for GDH (containing  $1\text{-}^{13}\text{C}$ -glycine). The dependence of the  $^{13}\text{C}$ - $^{13}\text{C}$  dipolar build-up curve on the recoupling time  $\tau_{\text{DQ}}$  depends only on the  $^{13}\text{C}$ - $^{13}\text{C}$  couplings between labelled  $^{13}\text{CO}_2^-$  sites in this material, which depend on the intermolecular  $^{13}\text{C}\cdots^{13}\text{C}$  distances between carboxylate groups. The theoretical  $^{13}\text{C}$ - $^{13}\text{C}$  dipolar build-up curve for GDH, calculated from the intermolecular  $^{13}\text{C}\cdots^{13}\text{C}$  distances in the reported crystal structure of GDH,<sup>[5]</sup> is also shown in Figure 4. The agreement between experimental and calculated dipolar build-up curves is excellent, giving strong corroboration that the hydrated crystalline phase of glycine observed in our in situ NMR study is indeed GDH.

To illustrate that the  $^{13}\text{C}$ - $^{13}\text{C}$  dipolar build-up curve is sensitive to structural properties, Figure 4 also shows experimental and calculated  $^{13}\text{C}$ - $^{13}\text{C}$  dipolar build-up curves for  $1\text{-}^{13}\text{C}$ -glycine in a different material (the  $\alpha$  polymorph). Again, good agreement is observed between experimental and calculated data. The fact that the DQF/ZQF curve builds up more slowly for GDH than for the  $\alpha$  polymorph is consistent with the intermolecular  $^{13}\text{C}\cdots^{13}\text{C}$  distances being higher in GDH, as the glycine molecules are separated by intervening water molecules (shortest internuclear  $^{13}\text{C}\cdots^{13}\text{C}$  distance:  $\alpha$  polymorph, 3.10 Å; GDH, 3.81 Å).



Our results demonstrate the advantages of exploiting in situ solid-state NMR techniques to elucidate details of structural evolution during crystallization processes, reporting the first application of such techniques to explore crystallization of an organic material within a glass phase (“frozen solution”) formed on flash cooling a liquid solution. Importantly, our results fully corroborate the existence of GDH as a crystalline intermediate on the transformation pathway from the glycine/water glass phase to the  $\beta$  polymorph, and highlight the complementarity between our in situ solid-state NMR strategy<sup>[21]</sup> and the in situ powder XRD approach that was first used to identify this new solid phase of glycine very recently.<sup>[5]</sup> Clearly, a major objective is now to establish whether GDH serves any role in mechanistic pathways for the crystallization of glycine from aqueous solution under ambient conditions.

### Acknowledgements

We thank Bruker SAS for access to the solid-state NMR spectrometer used here and Dr F. Aussenac and Dr P. Dorffer for experimental assistance. This work was supported by the French National Research Agency grant ANR-13-JS080001 and by Cardiff University. K.D.M.H. is grateful to Dr Tony Hu for stimulating discussions on the discovery of GDH.

### Conflict of interest

The authors declare no conflict of interest.

**Keywords:** crystallization · glycine · polymorphism · solid-state NMR spectroscopy · structural transformation

- [1] E. Fischer, *Ber. Dtsch. Chem. Ges.* **1905**, *38*, 2914–2925.  
 [2] J. D. Bernal, *Z. Kristallogr.* **1931**, *78*, 363–369.  
 [3] Y. Iitaka, *Proc. Jpn. Acad.* **1954**, *30*, 109–112.  
 [4] a) E. V. Boldyreva, S. N. Ivashevskaya, H. Sowa, H. Ahsbahs, H.-P. Weber, *Dokl. Phys. Chem.* **2004**, *396*, 111–114; b) A. Dawson, D. R. Allan, S. A. Belmonte, S. J. Clark, W. I. F. David, P. A. McGregor, S. Parsons, C. R. Pulham, L. Sawyer, *Cryst. Growth Des.* **2005**, *5*, 1415–1427; c) S. V. Goryainov, E. N. Kolesnik, E. V. Boldyreva, *Phys. B* **2005**, *357*, 340–347; d) S. V. Goryainov, E. V. Boldyreva, E. N. Kolesnik, *Chem. Phys. Lett.* **2006**, *419*, 496–500; e) C. L. Bull, G. Flowitt-Hill, S. de Gironcoli, E. Küçükbenli, S. Parsons, C. H. Pham, H. Y. Playford, M. G. Tucker, *IUCrJ* **2017**, *4*, 569–574.  
 [5] W. Xu, Q. Zhu, C. Hu, *Angew. Chem. Int. Ed.* **2017**, *56*, 2030–2034; *Angew. Chem.* **2017**, *129*, 2062–2066.  
 [6] a) E. V. Boldyreva, V. A. Drebushchak, T. N. Drebushchak, I. E. Paukov, Y. A. Kovalevskaya, E. S. Shutova, *J. Therm. Anal. Calorim.* **2003**, *73*, 409–418; b) C. S. Towler, R. J. Davey, R. W. Lancaster, C. J. Price, *J. Am. Chem. Soc.* **2004**, *126*, 13347–13353.  
 [7] a) C. E. Hughes, S. Hamad, K. D. M. Harris, C. R. A. Catlow, P. C. Griffiths, *Faraday Discuss.* **2007**, *136*, 71–89; b) C. E. Hughes, K. D. M. Harris, *New J. Chem.* **2009**, *33*, 713–716.  
 [8] B. D. Hamilton, M. A. Hillmyer, M. D. Ward, *Cryst. Growth Des.* **2008**, *8*, 3368–3375.  
 [9] a) G. Kartha, A. de Vries, *Nature* **1961**, *192*, 862–863; b) I. L. Karle, J. Karle, *Acta Crystallogr.* **1964**, *17*, 835–841; c) M. N. Frey, M. S. Lehmann, T. F. Koetzle, W. C. Hamilton, *Acta Crystallogr. Sect. B* **1973**, *29*, 876–884; d) S. Suresh, S. Padmanabhan, M. Vijayan, *J. Biomol. Struct. Dyn.* **1994**, *11*, 1425–1435; e) P. A. Williams, C. E. Hughes, A. B. M. Buanz, S. Gaisford, K. D. M. Harris, *J. Phys. Chem. C* **2013**, *117*, 12136–12145; f) P. A. Williams, C. E. Hughes, J. Martin, E. Courvoisier, A. B. M. Buanz, S. Gaisford, K. D. M. Harris, *J. Phys. Chem. C* **2016**, *120*, 9385–9392.  
 [10] a) E. Courvoisier, P. A. Williams, G. K. Lim, C. E. Hughes, K. D. M. Harris, *Chem. Commun.* **2012**, *48*, 2761–2763; b) P. A. Williams, C. E. Hughes, K. D. M. Harris, *Angew. Chem. Int. Ed.* **2015**, *54*, 3973–3977; *Angew. Chem.* **2015**, *127*, 4045–4049.  
 [11] A. Pyne, R. Suryanarayanan, *Pharm. Res.* **2001**, *18*, 1448–1454. This paper reported DSC measurements on a quenched glycine/water glass and observed three thermal events on heating: a glass transition (interpreted as melting of the glycine/water glass) followed by two exotherms (interpreted as crystallization of an unknown phase followed by transformation of this phase into the  $\beta$  polymorph of glycine).  
 [12] N. V. Surovtsev, S. V. Adichtchev, V. K. Malinovsky, A. G. Ogienko, V. A. Drebushchak, A. Y. Manakov, A. I. Ancharov, A. S. Yunoshev, E. V. Boldyreva, *J. Chem. Phys.* **2012**, *137*, 065103.  
 [13] a) C. E. Hughes, K. D. M. Harris, *J. Phys. Chem. A* **2008**, *112*, 6808–6810; b) C. E. Hughes, K. D. M. Harris, *Chem. Commun.* **2010**, *46*, 4982–4984; c) C. E. Hughes, P. A. Williams, T. R. Peskett, K. D. M. Harris, *J. Phys. Chem. Lett.* **2012**, *3*, 3176–3181; d) C. E. Hughes, P. A. Williams, K. D. M. Harris, *Angew. Chem. Int. Ed.* **2014**, *53*, 8939–8943; *Angew. Chem.* **2014**, *126*, 9085–9089; e) V. S. Mandala, S. J. Loewus, M. A. Mehta, *J. Phys. Chem. Lett.* **2014**, *5*, 3340–3344; f) C. E. Hughes, P. A. Williams, V. L. Keast, V. G. Charalampopoulos, G. R. Edwards-Gau, K. D. M. Harris, *Faraday Discuss.* **2015**, *179*, 115–140; g) K. D. M. Harris, C. E. Hughes, P. A. Williams, *Solid State Nucl. Magn. Reson.* **2015**, *65*, 107–113; h) K. D. M. Harris, C. E. Hughes, P. A. Williams, G. R. Edwards-Gau, *Acta Crystallogr. Sect. C* **2017**, *73*, 137–148; i) I. I. Ivanova, Y. G. Kolyagin, I. A. Kasyanov, A. V. Yakimov, T. O. Bok, D. N. Zarubin, *Angew. Chem. Int. Ed.* **2017**, *56*, 15344–15347; *Angew. Chem.* **2017**, *129*, 15546–15549.  
 [14] The centripetal force due to MAS at 8 kHz generates a pressure (see ref. [13f]) that has a maximal value of ca. 13 atm at the walls of the rotor; this pressure is several orders of magnitude lower than those required to form the high-pressure polymorphs of glycine.  
 [15] R. E. Taylor, *Concepts Magn. Reson. Part A* **2004**, *22*, 79–89.  
 [16] Previous work suggests that GDH transforms to the  $\beta$  polymorph only when the temperature is at least 218 K, which is significantly higher than the temperature at which this transformation is observed here.  
 [17] a) Z. Gu, K. Ebisawa, A. McDermott, *Solid State Nucl. Magn. Reson.* **1996**, *7*, 161–172; b) S. J. Kitchin, S. Ahn, K. D. M. Harris, *J. Phys. Chem. A* **2002**, *106*, 7228–7234; c) S. J. Kitchin, G. Tutoveanu, M. R. Steele, E. L. Porter, K. D. M. Harris, *J. Phys. Chem. B* **2005**, *109*, 22808–22813; d) A. E. Aliev, S. E. Mann, A. S. Rahman, P. F. McMillan, F. Corà, D. Iuga, C. E. Hughes, K. D. M. Harris, *J. Phys. Chem. A* **2011**, *115*, 12201–12211.  
 [18] P. Thureau, A. C. Sauerwein, M. Concistrè, M. H. Levitt, *Phys. Chem. Chem. Phys.* **2011**, *13*, 93–96.  
 [19] M. Hohwy, H. J. Jakobsen, M. Edén, M. H. Levitt, N. C. Nielsen, *J. Chem. Phys.* **1998**, *108*, 2686–2694.

- 1 [20] a) G. Pileio, M. Concistrè, N. McLean, A. Gansmüller, R. C. D.  
2 Brown, M. H. Levitt, *J. Magn. Reson.* **2007**, *186*, 65–74; b) C.  
3 Filip, S. Hafner, I. Schnell, D. E. Demco, H. W. Spiess, *J. Chem.*  
4 *Phys.* **1999**, *110*, 423–440; c) V. E. Zorin, S. P. Brown, P.  
5 Hodgkinson, *J. Chem. Phys.* **2006**, *125*, 144508.  
6 [21] We note that in situ solid-state NMR allows direct observation  
7 (in an isotope-specific manner) of the crystalline and amorphous  
8 phases present in the system as a function of time, yielding  
9 information on specific structural and dynamic aspects of these  
10 phases. By focusing on in situ  $^{13}\text{C}$  and  $^{15}\text{N}$  NMR, our measure-

11  
12  
13  
14  
15  
16  
17  
18  
19  
20  
21  
22  
23  
24  
25  
26  
27  
28  
29  
30  
31  
32  
33  
34  
35  
36  
37  
38  
39  
40  
41  
42  
43  
44  
45  
46  
47  
48  
49  
50  
51  
52  
53  
54  
55  
56  
57  
58  
59

ments selectively detect only the phases that contain glycine.  
Thus, our results are not complicated by the fact that pure ice  
phases may be present in significant amounts during the  
processes studied here.

Manuscript received: January 26, 2018


Revised manuscript received: March 1, 2018

Accepted manuscript online: April 6, 2018

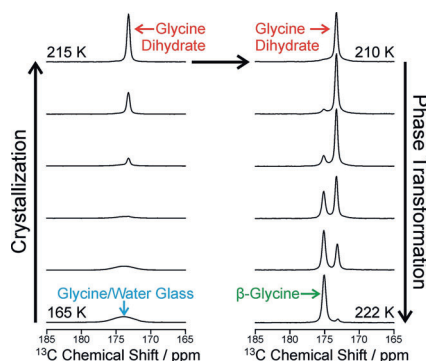
Version of record online: ■ ■ ■ ■, ■ ■ ■ ■

## Communications

## Crystallization


P. Cerreia Vioglio, G. Mollica, M. Juramy,  
C. E. Hughes, P. A. Williams, F. Ziarelli,  
S. Viel, P. Thureau,\*  
K. D. M. Harris\* 

Insights into the Crystallization and  
Structural Evolution of Glycine Dihydrate  
by In Situ Solid-State NMR Spectroscopy

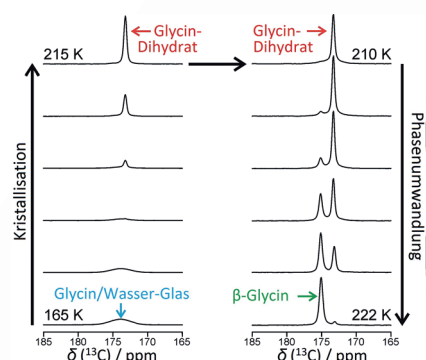


**Phase Transition:** the . Following flash cooling of an aqueous solution of glycine, in situ solid-state NMR spectroscopy exploited to study the structural evolution from a glycine/water glass phase to crystalline glycine dihydrate and then to the  $\beta$  polymorph of anhydrous glycine. That way formation and structural properties of a crystalline dihydrate phase of glycine, which was first reported only very recently can be explored.

## Kristallisation

P. Cerreia Vioglio, G. Mollica, M. Juramy,  
C. E. Hughes, P. A. Williams, F. Ziarelli,  
S. Viel, P. Thureau,\*  
K. D. M. Harris\* 

Insights into the Crystallization and  
Structural Evolution of Glycine Dihydrate  
by In Situ Solid-State NMR Spectroscopy



**Phasenumwandlung:** Nach Blitzkühlung einer wässrigen Glycinlösung wurde mittels In-situ-Festkörper-NMR-Spektroskopie die strukturelle Umwandlung der Glycin/Wasser-Glasphase zu kristallinem Glycindihydrat und dann zum  $\beta$ -Polymorph von wasserfreiem Glycin verfolgt. So konnten die Bildung und strukturellen Eigenschaften einer erst kürzlich beschriebenen kristallinen Dihydratphase von Glycin untersucht werden.

 ## SPACE RESERVED FOR IMAGE AND LINK

Share your work on social media! *Angewandte Chemie* has added Twitter as a means to promote your article. Twitter is an online microblogging service that enables its users to send and read short messages and media, known as tweets. Please check the pre-written tweet in the galley proofs for accuracy. If you, your team, or institution have a Twitter account, please include its handle @username. Please use hashtags only for the most important keywords, such as #catalysis, #nanoparticles, or #protein design. The ToC picture and a link to your article will be added automatically, so the **tweet text must not exceed 250 characters**. This tweet will be posted on the journal's Twitter account (follow us @angew\_chem) upon publication of your article in its final (possibly unpaginated) form. We recommend you to re-tweet it to alert more researchers about your publication, or to point it out to your institution's social media team.

Please check that the ORCID identifiers listed below are correct. We encourage all authors to provide an ORCID identifier for each coauthor. ORCID is a registry that provides researchers with a unique digital identifier. Some funding agencies recommend or even require the inclusion of ORCID IDs in all published articles, and authors should consult their funding agency guidelines for details. Registration is easy and free; for further information, see <http://orcid.org/>.

Paolo Cerreia Vioglio

Dr. Giulia Mollica

Marie Juramy

Dr. Colan E. Hughes

Dr. P. Andrew Williams

Dr. Fabio Ziarelli

Prof. Stéphane Vi

Dr. Pierre Thureau

Prof. Kenneth D. M. Harris <http://orcid.org/0000-0001-7855-8598>