



HAL
open science

Evaluation of visual triage for screening of Middle East respiratory syndrome coronavirus patients

S.H. Alfaraj, J.A. Al-Tawfiq, P. Gautret, M.G. Alenazi, A.Y. Asiri, Z.A. Memish

► To cite this version:

S.H. Alfaraj, J.A. Al-Tawfiq, P. Gautret, M.G. Alenazi, A.Y. Asiri, et al.. Evaluation of visual triage for screening of Middle East respiratory syndrome coronavirus patients. *New Microbes and New Infections*, 2018, 26, pp.49-52. 10.1016/j.nmni.2018.08.008 . hal-02100825

HAL Id: hal-02100825

<https://amu.hal.science/hal-02100825>

Submitted on 31 Mar 2020

HAL is a multi-disciplinary open access archive for the deposit and dissemination of scientific research documents, whether they are published or not. The documents may come from teaching and research institutions in France or abroad, or from public or private research centers.

L'archive ouverte pluridisciplinaire **HAL**, est destinée au dépôt et à la diffusion de documents scientifiques de niveau recherche, publiés ou non, émanant des établissements d'enseignement et de recherche français ou étrangers, des laboratoires publics ou privés.

Evaluation of visual triage for screening of Middle East respiratory syndrome coronavirus patients

S. H. Alfaraj^{1,7}, J. A. Al-Tawfiq^{6,8,9}, P. Gautret¹⁰, M. G. Alenazi², A. Y. Asiri³ and Z. A. Memish^{5,4}

1) Corona Center, Infectious Diseases Division, Department of Pediatrics, 2) Pediatric Emergency Medicine, Emergency Department, 3) Critical Care Department, 4) Infectious Diseases Division, Department of Medicine, Prince Mohammed Bin Abdulaziz Hospital, Ministry of Health, Saudi Arabia, 5) College of Medicine, Alfaisal University, Riyadh, 6) Johns Hopkins Aramco Healthcare, Dhahran, Saudi Arabia, 7) University of British Columbia, Vancouver, Canada, 8) Indiana University School of Medicine, Indianapolis, IN, USA, 9) Johns Hopkins University School of Medicine, Baltimore, MD, USA 10) Aix-Marseille Université, Unité de Recherche sur les Maladies Infectieuses et Tropicales Emergentes (URMITE) UM63 CNRS 7278 IRD 198 INSERM U1095, Marseille, France

Abstract

The emergence of Middle East respiratory syndrome coronavirus (MERS-CoV) in September 2012 in Saudi Arabia had attracted the attention of the global health community. In 2017 the Saudi Ministry of Health released a visual triage system with scoring to alert healthcare workers in emergency departments (EDs) and haemodialysis units for the possibility of occurrence of MERS-CoV infection. We performed a retrospective analysis of this visual score to determine its sensitivity and specificity. The study included all cases from 2014 to 2017 in a MERS-CoV referral centre in Riyadh, Saudi Arabia. During the study period there were a total of 2435 suspected MERS cases. Of these, 1823 (75%) tested negative and the remaining 25% tested positive for MERS-CoV by PCR assay. The application of the visual triage score found a similar percentage of MERS-CoV and non-MERS-CoV patients, with each score from 0 to 11. The percentage of patients with a cutoff score of ≥ 4 was 75% in patients with MERS-CoV infection and 85% in patients without MERS-CoV infection (p 0.0001). The sensitivity and specificity of this cutoff score for MERS-CoV infection were 74.1% and 18.6%, respectively. The sensitivity and specificity of the scoring system were low, and further refinement of the score is needed for better prediction of MERS-CoV infection.

© 2018 The Author(s). Published by Elsevier Ltd.

Keywords: Middle East respiratory syndrome coronavirus (MERS-CoV), Saudi Arabia, Scoring, Visual triage

Original Submission: 16 June 2018; **Revised Submission:** 7 July 2018; **Accepted:** 3 August 2018

Article published online: 11 August 2018

Corresponding author: Ziad A. Memish, College of Medicine, Alfaisal University, P.O. Box 54146, Riyadh 11514, Kingdom of Saudi Arabia. Tel.: +966-50-5483515; fax: +966-11-2616464.
E-mail: zmemish@yahoo.com

Introduction

The first case of Middle East respiratory syndrome coronavirus (MERS-CoV) was described in 2012 from a hospitalized patient in a private hospital in the Kingdom of Saudi Arabia [1]. The disease has attracted the attention of the global health

community because it carries a high fatality rate of 40% to 60% [2–5]. The high case fatality rate could be an overestimate because the exact numbers of asymptomatic and mild cases were not well defined. Recent estimates indicate an overall fatality rate of 35%. Over the 4 years since the virus's discovery, there have been multiple healthcare-associated outbreaks [2,3,6–15]. The main reason for these outbreaks was the difficulties in early identification of MERS-CoV confirmed cases from influenza-like illness cases, leading to inappropriate application of infection control standards and quarantine. In an effort to facilitate this task, differentiation between MERS-CoV and non-MERS-CoV cases based on epidemiologic and clinical indicators was evaluated in few studies, but with no helpful findings [16–18]. A case-control analysis identified some

significant predictors in univariate but not in multivariate analysis [16]. In other studies, presenting symptoms were not specific for MERS-CoV infection [17,18].

The Saudi Ministry of Health (MoH) developed and released a visual triage system to be used by all hospitals for the early identification of patients with acute respiratory illness in EDs, dialysis units and clinics [19]. In this study, we retrospectively evaluated the performance of this visual acute respiratory illness triage system for the prediction of MERS-CoV infection.

Patients and methods

Prince Mohammed bin Abdulaziz Hospital is a referral centre for MERS-CoV patients diagnosed in the central region based in Riyadh, Saudi Arabia. The visual triage form documents the institution, unit, healthcare worker involved in the triage with name and signature, and patient contact details (Fig. 1). It comprises nine items classified into two sections, with one related to the patient's symptoms and signs and presentation and the other section related to the patient's potential risk of exposure to MERS-CoV, each with a defined predetermined score (Fig. 1). The patient's symptoms include fever, cough, shortness of breath, nausea, vomiting or diarrhea, sore throat or runny nose and the presence of underlying conditions including diabetes mellitus, chronic renal failure, coronary artery disease or heart failure. Any patient scoring ≥ 4 will need isolation and assessment by a physician before ruling out MERS-CoV. All admitted patients from 1 April 2014 to December 2017 who were tested for MERS-CoV were included in this study. MERS-CoV testing was done using nasopharyngeal swabs as described previously [4]. MERS-CoV diagnosis was based on positive real-time reverse-transcriptase PCR as described previously [4,16,20].

We calculated the triage score for each patient on the basis of the scores from Saudi MoH [19] using the identified signs and

symptoms. The percentage of patients with the specified score was calculated and compared between those with and without MERS-CoV infection using a chi-square test.

We then calculated the sensitivity and specificity of the scoring scale adopted for the identification of positive cases in relation to virus detection by real-time PCR. Sensitivity and specificity were calculated, for an original cutoff value of 4. We subsequently challenged the triage scoring by increasing the values of MERS-CoV potential exposure specific items 7 to 9 by giving 6 points for factor 7 instead of 3, 4 points for factor 8 instead of 2 and 2 for factor 9 instead of 1. We then calculated sensitivity and specificity in the same manner.

Results

During the study period from 2014 to 2017, there was a total of 2435 suspected MERS-CoV cases. Of these, 1823 cases (75%) tested negative and the remaining 25% tested positive for MERS-CoV by PCR. The application of the visual triage score resulted in a similar percentage of MERS-CoV and non-MERS-CoV patients with each score from 0 to 11 (Fig. 2). The percentage of patients with a cutoff score of ≥ 4 was 75% in patients with MERS and 85% in patients without MERS ($p < 0.0001$). The sensitivity and specificity of this cutoff score for MERS-CoV infection were 74.1% and 18.6%, respectively. Increasing the values of items 7 to 9 and recalculating the score, as indicated above, was not discriminative as well.

Discussion

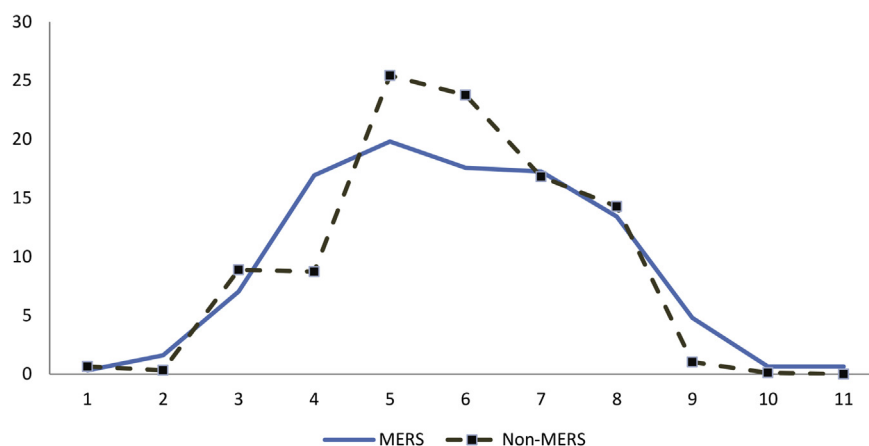
We retrospectively evaluated the proposed Saudi MoH triage scoring system for the screening of MERS-CoV patients. During the outbreak of severe acute respiratory syndrome, one

<i>A. Clinical symptom/sign</i>		Points	Score
1	Fever ($\geq 38^{\circ}\text{C}$)	2	
2	Cough (New or worsening)	2	
3	Shortness of breath (New or worsening)	2	
4	Nausea, vomiting, diarrhea	1	
5	Sore throat and/or runny nose	1	
6	DM, Chronic renal failure, CAD/heart failure	1	
<i>B. Risk of exposure to MERS</i>			
7	Exposure to a confirmed MERS case in last two weeks	3	
8	Exposure to camel or products (Direct or indirect*) in the last two weeks	2	
9	Visit to health care facility that has MERS case in last two weeks	1	
Total Score			

* Patient or household

FIG. 1. Visual triage form showing two sections, one related to patient presenting symptoms and signs and one related to risk of exposure to MERS-CoV. CAD, coronary artery disease; DM, diabetes mellitus; MERS-CoV, Middle East respiratory syndrome coronavirus.

FIG. 2. Percentage of patients (y-axis) with specified score (x-axis) in those with (solid line) and without (dashed line) MERS-CoV infection. MERS-CoV, Middle East respiratory syndrome coronavirus.



hospital expanded the isolation criteria to include all patients with undifferentiated fever with or without respiratory symptoms or chest X-ray changes [21]. Differentiating patients with MERS-CoV from other non-MERS-CoV patients has been a challenge for the healthcare workers in Saudi Arabia. There are no signs, symptoms, physical findings, specific laboratory or radiologic findings that can help healthcare workers identify MERS-CoV patients [17–19]. This was made clear from recent MoH data, which showed that every year more than 50,000 patients suspected to be infected with MERS-CoV were tested kingdomwide, with a yield of 0.7% positivity [22]. This calls for regular review of MERS-CoV case definition and a reevaluation of the visual triage scoring to ensure its accuracy and to avoid clogging isolation rooms and exhausting MoH financial resources by excessive testing of suspected MERS-CoV cases. In addition, it is important to have healthcare organizations ready to identify and isolate patients with suspected MERS-CoV. In a recent study evaluating the readiness of hospitals in the United States, 42 specific drills for patients with possible MERS-CoV infection were conducted in New York City [23]. The drills revealed variable identification of potentially infectious patients and implementation of appropriate infection control measures [23].

Rever-transcriptase PCR testing for MERS-CoV is the reference standard test for MERS-CoV, and in the Kingdom of Saudi Arabia, the MoH assigned five regional laboratories for testing all samples (Makkah, Madinah, Jeddah, Riyadh and Dammam). When samples are collected from the same city where a laboratory is located, it takes an average of a full day for the result, while samples from outside the city will take 1.5 days, and from one region to another, it will take 2 days. In the setting of crowded EDs, limited numbers of isolation rooms and the need to rapidly decide on contact tracing and intervention for contacts of positive patients, this time frame is potentially long.

To address this concern and to avoid a huge backlog of patients in the ED, two strategies are needed. First, the case definition needs to be revised after careful review of available data to the MoH for 5 years. Second, we must invest in developing highly sensitive and specific point-of-care testing in EDs and haemodialysis units where the results will be available in 1 to 2 hours [24–26]. Emerging diseases with regional and international implications need to be addressed in a consultative format involving all stakeholders locally, regionally and internationally.

The current study, conducted on a large number of patients, showed that clinical scoring is not predictive of MERS infection. Our results are robust and confirm that MERS cannot be distinguished from other respiratory infections on the basis of risk factors and clinical features. Thus, all patients with nonspecific symptoms in a MERS-endemic area will have to be isolated until MERS can be ruled out by PCR testing. This strategy has important consequences in terms of public health, notably in order to limit the transmission of MERS in the healthcare setting. This is particularly relevant in countries where access to rapid diagnosis is scarce. Meanwhile, until point-of-care MERS-CoV testing is made available, triage of patients on the basis of the current MoH triage score should be revised to a robust scoring system.

The current study has few limitations. This is a retrospective study, and thus the exact application of the findings on new cases might not be generalizable. The study was performed in a MERS-CoV referral centre, and the applicability of the findings to patients being seen in the ED therefore might not be accurate. Thus, further refinement of the score is needed for better prediction of MERS-CoV infection in patients seeking care in the ED.

Conflict of interest

None declared.

References

- coronavirus infections related to a likely unrecognized asymptomatic or mild case. *Int J Infect Dis* 2013;17:e668–72.
- [1] Zaki AM, van Boheemen S, Bestebroer TM, Osterhaus ADME, Fouchier RAM. Isolation of a novel coronavirus from a man with pneumonia in Saudi Arabia. *N Engl J Med* 2012;367:1814–20.
- [2] Al-Tawfiq JA, Memish ZA. Middle East respiratory syndrome coronavirus: epidemiology and disease control measures. *Infect Drug Resist* 2014;7:281–7.
- [3] Assiri A, McGeer A, Perl TM, Price CS, Al Rabeeah AA, Cummings DAT, et al. Hospital outbreak of Middle East respiratory syndrome coronavirus. *N Engl J Med* 2013;369:407–16.
- [4] Assiri A, Al-Tawfiq JA, Al-Rabeeah AA, Al-Rabiah FA, Al-Hajjar S, Al-Barrak A, et al. Epidemiological, demographic, and clinical characteristics of 47 cases of Middle East respiratory syndrome coronavirus disease from Saudi Arabia: a descriptive study. *Lancet Infect Dis* 2013;13:752–61.
- [5] Penttinen PM, Kaasik-Aaslav K, Friaux A, Donachie A, Sudre B, Amato-Gauci AJ, et al. Taking stock of the first 133 mers coronavirus cases globally—is the epidemic changing? *Euro Surveill* 2013;18:20596.
- [6] Oboho IK, Tomczyk SM, Al-Asmari AM, Banjar AA, Al-Mugti H, Aloraini MS, et al. 2014 MERS-CoV outbreak in Jeddah—a link to health care facilities. *N Engl J Med* 2015;372:846–54.
- [7] Drosten C, Muth D, Corman VM, Hussain R, Al Masri M, HajOmar W, et al. An observational, laboratory-based study of outbreaks of Middle East respiratory syndrome coronavirus in Jeddah and Riyadh, Kingdom of Saudi Arabia, 2014. *Clin Infect Dis* 2015;60:369–77.
- [8] Al-Tawfiq JA, Memish ZA. An update on Middle East respiratory syndrome: 2 years later. *Expert Rev Respir Med* 2015;9:327–35.
- [9] Al-Tawfiq JA, Memish ZA. Middle East respiratory syndrome coronavirus: transmission and phylogenetic evolution. *Trends Microbiol* 2014;22:573–9.
- [10] Hijawi B, Abdallat M, Sayaydeh A, Alqasrawi S, Haddadin A, Jaarour N, et al. Novel coronavirus infections in Jordan, April 2012: epidemiological findings from a retrospective investigation. *East Mediterr Heal J* 2013;19(Suppl. 1):S12–8.
- [11] Kim Y, Lee S, Chu C, Choe S, Hong S, Shin Y. The characteristics of Middle Eastern respiratory syndrome coronavirus transmission dynamics in South Korea. *Osong Public Health Res Perspect* 2016;7:49–55.
- [12] Seong MW, Kim SY, Corman VM, Kim TS, Cho SI, Kim MJ, et al. Microevolution of outbreak-associated Middle East respiratory syndrome coronavirus, South Korea, 2015. *Emerg Infect Dis* 2016;22:327–30.
- [13] Memish ZA, Zumla AI, Al-Hakeem RF, Al-Rabeeah AA, Stephens GM. Family cluster of Middle East respiratory syndrome coronavirus infections. *N Engl J Med* 2013;368:2487–94.
- [14] Omrani AS, Matin MA, Haddad Q, Al-Nakhli D, Memish ZA, Albarak AM. A family cluster of Middle East respiratory syndrome coronavirus infections related to a likely unrecognized asymptomatic or mild case. *Int J Infect Dis* 2013;17:e668–72.
- [15] Memish ZA, Cotten M, Watson SJ, Kellam P, Zumla A, Alhakeem RF, et al. Community case clusters of Middle East respiratory syndrome coronavirus in Hafr Al-Batin, Kingdom of Saudi Arabia: a descriptive genomic study. *Int J Infect Dis* 2014;23:63–8.
- [16] Al-Tawfiq JA, Hinedi K, Ghandour J, Khairalla H, Musleh S, Ujayli A, et al. Middle East respiratory syndrome–coronavirus (MERS-CoV): a case–control study of hospitalized patients. *Clin Infect Dis* 2014;59:160–5.
- [17] Mohd HA, Memish ZA, Alfaraj SH, McClish D, Altuwaijri T, Alanazi MS, et al. Predictors of MERS-CoV infection: a large case control study of patients presenting with ILI at a MERS-CoV referral hospital in Saudi Arabia. *Travel Med Infect Dis* 2016;14:464–70.
- [18] Garbati MA, Fagbo SF, Fang VJ, Skakni L, Joseph M, Wani TA, et al. A comparative study of clinical presentation and risk factors for adverse outcome in patients hospitalised with acute respiratory disease due to MERS coronavirus or other causes. *PLoS One* 2016;11:e0165978.
- [19] Command and Control Center Ministry of Health Kingdom of Saudi Arabia Scientific Advisory Board. Infection prevention and control guidelines for the Middle East respiratory syndrome coronavirus (MERS-CoV) infection. 4th ed. 2017 Available at: <http://www.moh.gov.sa/endepts/Infection/Documents/Guidelines-for-MERS-CoV.PDF>.
- [20] Al-Tawfiq JA, Hinedi K, Abbasi S, Babiker M, Sunji A, Eltigani M. Hematologic, hepatic, and renal function changes in hospitalized patients with Middle East respiratory syndrome coronavirus. *Int J Lab Hematol* 2017;39:272–8.
- [21] Singh K, Hsu LY, Villacian JS, Habib A, Fisher D, Tambyah PA. Severe acute respiratory syndrome: lessons from Singapore. *Emerg Infect Dis* 2003;9:1294–8.
- [22] Bin Saeed AA, Abedi GR, Alzahrani AG, Salameh I, Abdirazak F, Alhakeem R, et al. Surveillance and testing for Middle East respiratory syndrome coronavirus, Saudi Arabia, April 2015–February 2016. *Emerg Infect Dis* 2017;23:682–5.
- [23] Foote MMK, Styles TS, Quinn CL. Assessment of hospital emergency department response to potentially infectious diseases using unannounced mystery patient drills—New York City, 2016. *MMWR Morb Mortal Wkly Rep* 2017;66:945–9.
- [24] Huh HJ, Kim JY, Kwon HJ, Yun SA, Lee MK, Ki CS, et al. Performance evaluation of the PowerChek MERS (upE & ORF1a) real-time PCR kit for the detection of Middle East respiratory syndrome coronavirus RNA. *Ann Lab Med* 2017;37:494–8.
- [25] Lee SH, Baek YH, Kim YH, Choi YK, Song MS, Ahn JY. One-pot reverse transcriptional loop-mediated isothermal amplification (RT-LAMP) for detecting MERS-CoV. *Front Microbiol* 2017;2:166.
- [26] Kim KH, Tandil TE, Choi JW, Moon JM, Kim MS. Middle East respiratory syndrome coronavirus (MERS-CoV) outbreak in South Korea, 2015: epidemiology, characteristics and public health implications. *J Hosp Infect* 2017;95:207–13.