



**HAL**  
open science

**Anaerotruncus massiliensis sp. nov., a succinate-producing bacterium isolated from human stool from an obese patient after bariatric surgery**

A.H. Togo, A. Diop, G. Dubourg, S. Khelaifia, M. Richez, N. Armstrong, M. Maraninchi, P.-E. Fournier, Didier Raoult, M. Million

► **To cite this version:**

A.H. Togo, A. Diop, G. Dubourg, S. Khelaifia, M. Richez, et al.. Anaerotruncus massiliensis sp. nov., a succinate-producing bacterium isolated from human stool from an obese patient after bariatric surgery. *New Microbes and New Infections*, 2019, 29, pp.100508. 10.1016/j.nmni.2019.01.004 . hal-02262571

**HAL Id: hal-02262571**

**<https://amu.hal.science/hal-02262571>**

Submitted on 25 May 2020

**HAL** is a multi-disciplinary open access archive for the deposit and dissemination of scientific research documents, whether they are published or not. The documents may come from teaching and research institutions in France or abroad, or from public or private research centers.

L'archive ouverte pluridisciplinaire **HAL**, est destinée au dépôt et à la diffusion de documents scientifiques de niveau recherche, publiés ou non, émanant des établissements d'enseignement et de recherche français ou étrangers, des laboratoires publics ou privés.

# *Anaerotruncus massiliensis* sp. nov., a succinate-producing bacterium isolated from human stool from an obese patient after bariatric surgery

A. H. Togo<sup>1,2</sup>, A. Diop<sup>1,3</sup>, G. Dubourg<sup>1,2</sup>, S. Khelaifia<sup>1,2</sup>, M. Richez<sup>1,2</sup>, N. Armstrong<sup>1,2</sup>, M. Maraninchi<sup>4</sup>, P.-E. Fournier<sup>3</sup>, D. Raoult<sup>1,2</sup> and M. Million<sup>1,2</sup>

1) IHU-Méditerranée Infection, 2) Aix Marseille Univ, IRD, APHM, MEPHI, Marseille, 3) Aix Marseille Université, IRD, VITROME, and 4) Aix-Marseille Université, NORT 'Nutrition, Obesity and Risk of Thrombosis,' INSERM I062, INRA I260, Marseille, France

## Abstract

A new bacterium, strain AT3<sup>T</sup>, was isolated by microbial culturomics from a faecal sample from a Frenchman after bariatric surgery. The isolate exhibited 96.6% 16S ribosomal RNA gene nucleotide sequence similarity with *Anaerotruncus colihominis* strain WAL 14565<sup>T</sup> = CCUG 45055<sup>T</sup> = CIP 107754<sup>T</sup>. Phenotypic and genomic characteristics showed that the new strain represents a novel species, for which the name *Anaerotruncus massiliensis* sp. nov. is proposed. The type strain is strain AT3<sup>T</sup> = CSUR P2007<sup>T</sup> = DSM 100567<sup>T</sup>.

© 2019 The Authors. Published by Elsevier Ltd.

**Keywords:** *Anaerotruncus*, human gut microbiome, microbial culturomics, obesity, taxonogenomics

**Original Submission:** 26 December 2018; **Accepted:** 15 January 2019

**Article published online:** 30 January 2019

**Corresponding author:** M. Million, Aix-Marseille Université, IRD198, APHM, MEPHI, IHU-Méditerranée Infection, 19-21 Boulevard Jean Moulin, 13385, Marseille cedex 05, France.

**E-mail:** [matthieumillion@gmail.com](mailto:matthieumillion@gmail.com)

## Introduction

Obesity is a major public health problem [1,2]. It increases the risk of metabolic diseases such as type 2 diabetes and cardiovascular diseases such as high blood pressure [3]. The global obesity rate has been steadily increasing since 1980 [4]. The influence of the gut microbiota in human health and disease has been revealed in the recent years. Recently obesity has been associated with gut microbiota dysbiosis [5–7].

The various treatment regimens proposed to treat obesity are mainly dietary measures as well as medical and surgical treatments. Bariatric surgery has been documented as one of the most effective treatments for obesity and has been associated with increased microbial diversity [8,9]. We studied stool samples from obese patients before and after bariatric surgery using the microbial culturomics approach [10]. During this

study, a novel Gram-negative anaerobic bacterium was isolated from a stool sample collected after bariatric surgery from an obese man.

Here we characterize a novel bacterial species, strain AT3, belonging to *Anaerotruncus* genus [11], together with the genome sequencing assembly, annotation and comparison. At the time we described this new species, the genus *Anaerotruncus* only contained one species, the type species *Anaerotruncus colihominis* strain WAL 14565<sup>T</sup> = CCUG 45055<sup>T</sup> = CIP 107754<sup>T</sup> [11].

## Methods

The stool sample was collected from a 47-year-old obese Frenchman with a body mass index of 35.3 kg/m<sup>2</sup> in November 2011. Written informed consent was obtained from the patient at the nutrition, metabolic disease and endocrinology service at La Timone Hospital, Marseille, France. The study and the assent procedure were approved by the local ethics committee of IFR 48 (approval 09-022, 2010). Stool samples were stored at –80° C after collection until use.

Growth of strain AT3 was performed in May 2015. Sterile stool extract was preincubated in a blood culture bottle

enriched with rumen fluid and sheep's blood, then seeded on 5% sheep's blood Columbia agar (bioMérieux, Marcy l'Etoile, France) as described elsewhere [12]. Strain purification and identification were performed as previously described [12,13].

The 16S ribosomal RNA (rRNA) gene sequencing of the strain AT3 was performed as previously reported [14] using the fD1-rP2 primers, a GeneAmp PCR System 2720 thermal cycler (Applied Biosystems; Thermo Fisher Scientific, Waltham, MA, USA) and an ABI Prism 3130-XL capillary sequencer (Applied Biosciences, Saint Aubin, France). For taxonomic assignment, CodonCode Aligner (CodonCode, Centerville, MA, USA) software was used to correct sequences, and BLASTn searches were performed by the National Center for Biotechnology Information (NCBI) web server (<http://blast.ncbi.nlm.nih.gov.gateway.inist.fr/Blast.cgi>) for neighbour search. Sequences were aligned using CLUSTAL W [15] and phylogenetic inferences were obtained using the maximum likelihood method [16] by MEGA 7 software [17].

The colonies' morphology and pigmentation were observed after cultivation of the strain on a 5% sheep's blood Columbia agar plate (bioMérieux) at 37°C in anaerobic condition for 48 hours. Phenotypic characteristic analysis of the strain was performed as previously described [12,18]. The growth of the strain for temperature ranged from 25 to 55°C when assessed on sheep's blood-enriched Columbia agar (bioMérieux) under different atmospheric conditions. The pH growth of strain AT3 was assessed at various pH range from 6 to 8.5 under anaerobic condition at 37°C. The saltiness of the strain using various concentrations (5, 10, 50, 75 and 100 g/L) of NaCl on Schaedler agar with 5% sheep's blood (bioMérieux) under an anaerobic atmosphere at 37°C was also tested.

Biochemical assays using API Gallery strips—API ZYM, API 20A, API 50 CH and rapid ID 32 A (bioMérieux)—were performed according the manufacturer's instruction.

Cellular fatty acid methyl ester and carbohydrate metabolism end product of strain AT3 were assessed as previously reported [12]. Antimicrobial susceptibility of the strain was also tested according the European Committee on Antimicrobial Susceptibility Testing (EUCAST) recommendation [19,20] using 12 antibiotics.

The antimicrobial agent susceptibility of the strain was tested according the EUCAST recommendations [19,20] using 12 antibiotics, including Etest strips for amikacin (0.016–256 µg/mL), vancomycin (0.016–256 µg/mL), imipenem (0.002–32 µg/mL), ceftriaxone (0.016–256 µg/mL), rifampicin (0.002–32 µg/mL), benzyl penicillin (0.002–32 µg/mL), amoxicillin (0.016–256 µg/mL), cefotaxime (0.002–32 µg/mL), metronidazole (0.016–256 µg/mL), minocycline (0.016–256 µg/mL), teicoplanin (0.016–256 µg/mL), erythromycin (0.016–256 µg/mL) and daptomycin (0.016–256 µg/mL) (bioMérieux).

Genomic DNA of strain AT3 was sequenced on MiSeq Technology (Illumina, San Diego, CA, USA) with the mate-pair strategy and assembly deployed as previously described [18,21]. The genome annotation of strain AT3 was performed as previously described [12] and compared to the genomes of his relatives species. For the comparison, genomes of closest species were automatically retrieved from the 16S rRNA tree and thus, *Anaerotruncus colihominis* strain WAL 14565<sup>T</sup> (= CCUG 45055<sup>T</sup> = CIP 107754<sup>T</sup>) (ABGD00000000) [11], *Hydrogenoanaerobacterium saccharovorans* strain SW512<sup>T</sup> (= AS 1.5070<sup>T</sup> = JCM 14861<sup>T</sup>) (FOCG00000000) [22], *Ruthenibacterium lactatiformans* strain 585-1<sup>T</sup> (= DSM 100348<sup>T</sup> = VKM B-2901<sup>T</sup>) (JXXK00000000) [23], *Acetivibacter muris* strain KB18<sup>T</sup> (= DSM 26090<sup>T</sup> = KCTC 15540<sup>T</sup>) (CP021422) [24], *Acetanaerobacterium elongatum* strain Z7<sup>T</sup> (= JCM 12359<sup>T</sup> = AS 1.5012<sup>T</sup>) (FNID00000000) [25], *Ruminococcus flavefaciens* strain C94<sup>T</sup> (= ATCC 19208<sup>T</sup>) (JAEF00000000) [26] and *Ruminococcus champanellensis* strain 18P13<sup>T</sup> (= DSM 18848<sup>T</sup> = JCM 17042<sup>T</sup>) (FP929052) [27] were selected. For each selected genome, complete genome sequence, proteome genome sequence and Orfeome genome sequence were retrieved from NCBI's FTP. All proteomes were analysed with proteinOrtho [28]. Then for a couple of genomes, a similarity score was computed. This score was the mean value of nucleotide similarity of average genomic identity of orthologous gene sequences between the two genomes studied [29]. An annotation of the entire proteome was performed to define the distribution of functional classes of predicted genes according to the clusters of orthologous groups of proteins (using the same method as for the genome annotation). The genome of strain AT3 was locally aligned 2 by 2 using the BLAT algorithm [30,31] against each the selected genomes previously cited. Digital DNA-DNA hybridization values were estimated from a generalized model [32]. Average amino acid identity was also calculated on the basis of the overall similarity between two genomic data sets of the online proteins (<http://enve-omics.ce.gatech.edu/aai/index>) [33,34].

## Results

The spectrum generated from clean isolate spots was unable to match those in Bruker's and our own database, so the strain's 16S rRNA gene was sequenced. BLASTn searches performed using the 16S rRNA gene sequences showed that strain AT3 exhibited 96.6% sequence similarity with *A. colihominis* strain WAL 14565<sup>T</sup> = CCUG 45055<sup>T</sup> = CIP 107754<sup>T</sup> [11], classified in the *Ruminococcaceae* family created by Rainey [35]. A maximum likelihood phylogenetic tree based on 16S rRNA gene sequences showed relationships between strain AT3 and

some related taxa (Fig. 1). The numbers of nodes correspond to the percentages of bootstrap values obtained by repeating the analysis to 1000 times to generate a consensus tree.

This new isolate was a Gram-negative–staining, nonmotile and rod-shaped bacterium. The strain was catalase positive but oxidase negative. The growth of the strain occurred between 28 to 45°C, but optimal growth was observed at 37°C after 72 hours' incubation in anaerobic atmosphere on Columbia agar with 5% sheep's blood (bioMérieux). No growth was observed in aerobic atmosphere. No growth of this bacterium was observed using 10 g/L of NaCl concentration on Schaedler agar (bioMérieux). The pH for growth ranged from 6 to 8.5, but the optimal pH was 7.5. The colonies were opalescent, with a mean diameter of 0.5 to 1.5 mm. Haemolysis was not observed on Columbia agar plate (bioMérieux). Cells had a diameter ranging from 0.3 to 2.9 µm by electron microscopy (Fig. 2).

Using the API 50 CH strip, positive reactions were observed with glycerol, erythritol, adonitol, methyl-βD-xylopyranoside, galactose, glucose, mannose, sorbitol, esculin, trehalose, inulin, glycogen, gentiobiose, tagatose and potassium 5–cetogluconate and starch, whereas arabinose, ribose, xylose, fructose, sorbose, rhamnose, dulcitol, inositol, mannitol, methyl-αD-mannopyranoside, methyl-αD-glucopyranoside, N-acetylglucosamine, amygdaline, arbutine, salicin, cellobiose, maltose, lactose, melibiose, saccharose, melezitose, raffinose, sylitol, turanose, lyxose, fucose, arabitol and potassium gluconate were negative. Using the API 20A strip, glucose, maltose, mannose, trehalose and rhamnose are fermented, while mannitol, lactose, saccharose, salicin, xylose, arabinose,

glycerol, cellobiose, melezitose, raffinose, sorbitol and rhamnose are not. Aesculin and gelatine are hydrolyzed while urease and indole are not produced. Using the rapid ID 32 A strip, positive reactions were observed with alkaline phosphatase, arginine arylamidase, leucyl glycine arylamidase, phenylalanine arylamidase, leucine arylamidase, pyroglutamic acid arylamidase, tyrosine arylamidase, alanine arylamidase, glycine arylamidase, histidine arylamidase, glutamyl glutamic acid arylamidase, serine arylamidase and arginine dihydrolase. Mannose and raffinose are not fermented. Urease is not produced, while indole is produced and nitrate is reduced. Using the API ZYM strip, positive reactions were observed with alkaline phosphatase, esterase (C-4), esterase lipase (C-8), acid phosphatase, naphthol-AS-BI-phosphohydrolase and α-glucosidase, while

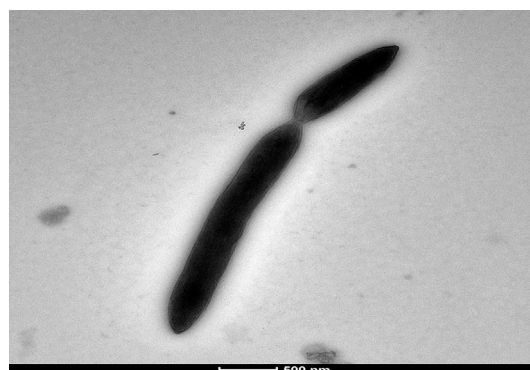
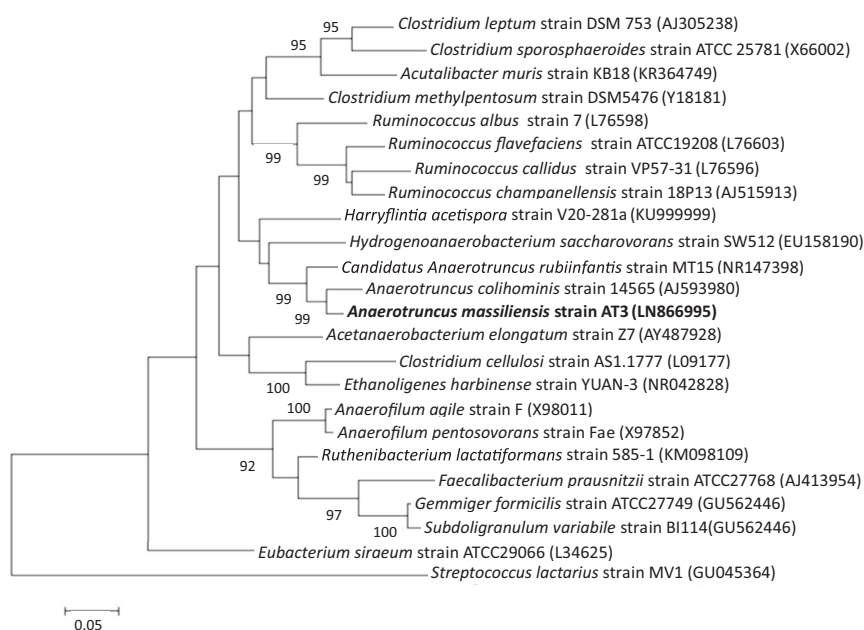


FIG. 2. Transmission electron microscopy of strain AT3 using a Tecnai G20 (FEI) at operating voltage of 60 kV. Scale bar, 500 µm.

FIG. 1. 16S rRNA-based maximum likelihood (ML) phylogenetic tree highlighting position of strain AT3 with closely related species. Corresponding GenBank accession numbers for 16S rRNA genes of each strain are indicated. Sequences were aligned using CLUSTAL W with default parameters and phylogenies were inferred by MEGA 7 software. Branches are scaled in terms of expected number of substitutions per site. Numbers above branches are support values when higher than 75% from ML bootstrapping. Scale bar represents a nucleotide sequence divergence of 2%.



**TABLE 1.** Differential characteristics of strain AT3 compared to its closest species

Properties	1	2	3	4	5	6	7	8
Cells size (µm)	0.3/2.9	0.5/2–5	0.3–0.4/2.0–14.5	1.6/0.4		0.2–0.4/4.0–8.0	0.8/0.9	0.9/1.3
Gram stain	—	+	—	—	—	+	+	+
Motility	—	—	—	—	—	+	—	—
Spore forming	—	—	—	—	+	—	—	—
Aesculin hydrolysis	+	—	—	+	+	+	—	+
Gelatin hydrolysis	+	—	—	—	w	+	—	—
Urease	—	—	—	—	—	—	NA	—
Indole	+	+	—	—	—	+	—	—
Catalase	+	—	—	—	—	—	—	—
Acid from:								
Arabinose	—	—	+	—	—	+	+	—
Cellobiose	—	+	—	—	—	+	+	+
Glucose	+	+	+	+	—	+	—	—
Lactose	—	—	+	—	—	—	+	—
Maltose	v	+	NA	v	—	+	—	—
Mannose	v	+	+	—	—	—	—	—
Raffinose	—	—	+	—	—	+	—	—
Sucrose	—	—	+	v	NA	+	—	—
Salicin	—	—	—	v	—	+	—	—
Starch	+	—	—	+	—	—	NA	—
Trehalose	+	—	+	—	—	—	—	—
Alkaline phosphatase	+	—	NA	—	+	w	NA	+
Major end product of carbohydrate metabolism	A, B, Ib, Ip, Ih	A, B	A, E	L, S, A	NA	A, E	A, F, E	A, S
G+C content (%)	63.7	54	41.9	49.6	54.6	50.4	39–44	53.05
Isolated from	Human faeces	Human faeces	UASB reactor	Human faeces	Human faeces	Human faeces	Human faeces	Human faeces

+, positive result; —, negative result; v, variable result; w, weakly positive result; NA, data not available; UASB, upflow anaerobic sludge blanket; A, acetic acid; B, butyric acid; Ib, isobutyric acid; Ip, isopentanoic acid; Ih, isohexanoic acid; L, lactic acid; E, ethanol; F, formic; S, succinic.

1, Strain AT3; 2, *Anaerotruncus colihominis*; 3, *Hydrogenoanaerobacterium saccharovorans*; 4, *Ruthenibacterium lactatiformans*; 5, *Acutalibacter muris*; 6, *Acetanaerobacterium elongatum*; 7, *Ruminococcus flavefaciens*; 8, *Ruminococcus champanellensis*. Data from [Lawson et al. 2004], [Song et al. 2004], [Shkoporov et al. 2016], [Lagkouvardos et al. 2016], [Chen et al. 2004] and [Chassard et al. 2012].

lipase, leucine arylamidase, valine arylamidase, cystine arylamidase, trypsin,  $\alpha$ -chymotrypsin,  $\alpha$ -galactosidase,  $\beta$ -galactosidase,  $\beta$ -glucuronidase,  $\beta$ -glucosidase, *N*-acetyl- $\beta$ -glucosaminidase,  $\alpha$ -mannosidase,  $\alpha$ -mannosidase and  $\alpha$ -fructosidase were negative.

The major cellular fatty of the new strain were the anteiso- $C_{15:0}$  (29%),  $C_{16:0}$  (20.6%) and  $C_{14:0}$  (19.5%). The different characteristics of strain AT3<sup>T</sup> compared to its closet species are listed in Table 1. The composition of cellular fatty acids for this isolate is shown in Table 2. The end products of carbohydrate metabolism of the strain AT3 after 72 hours' incubation in Wilkins Chalgren anaerobe broth (MilliporeSigma, St Louis, MO, USA) were acetic acid ( $12.3 \pm 0.5$  mM), butanoic acid ( $7.6 \pm 2.0$  mM), isobutanoic acid ( $1.4 \pm 0.1$  mM), isopentanoic acid ( $1.0 \pm 0.2$  mM) and isohexanoic acids ( $1.0 \pm 0.1$  mM).

Antibiotic susceptibility tested according the EUCAST recommendation gave the following MIC results: >256, 0.125, 32, >256, 0.006, 0.016, 0.19, 0.016, 1.5, 0.125, 256 and 0.5 µg/mL, respectively, for amikacin, vancomycin, imipenem, ceftriaxone, rifampicin, benzyl penicillin, amoxicillin, metronidazole, minocycline, teicoplanin, erythromycin and daptomycin.

The draft genome of strain AT3 is 3 145 950 bp long with 63.6% G+C content (Fig. 3). It is composed of seven scaffolds (eight contigs). Within the 2927 predicted genes, 2868 were protein-coding genes and 59 were RNAs genes (four 5S rRNA genes, two 16S rRNA genes, two 23S rRNA genes and 51 tRNA genes). A total of 2106 genes (74.4%) were assigned to a putative function by COGs or by nonredundant blast. There

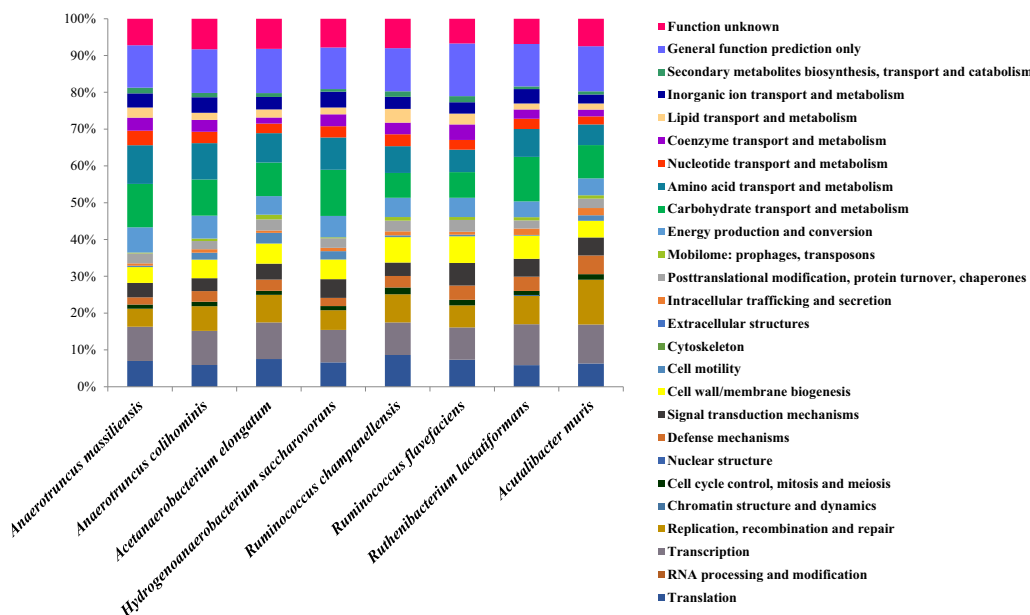
were 398 genes (13.9%) associated with peptide signal proteins. ARG-ANNOT (Antibiotic Resistance Gene–Annotation) analysis found two genes (0.07%) associated with antimicrobial agent resistance [36] and four genes (0.14%) associated with polyketide synthase or nonribosomal peptide synthetases [37]. Using the online RAST Server version 2.0 tool, 20 genes were found to be associated with antibiotic resistance (four genes for fluoroquinolone resistance, four for tetracycline resistance and 12 for multidrug resistance efflux pumps), nine genes associated with invasion and intracellular resistance, five to copper homeostasis, nine to cobalt–zinc–cadmium resistance, two to mercuric reductase, one to mercury resistance operon, one to copper homeostasis:copper tolerance and one to cadmium resistance. No gene associated with virulence, toxins or bacteriocins has been found [38]. There were 193 genes (6.7%) identified as ORFans. The remaining 481 (16.8%) were

**TABLE 2.** Cellular fatty acid composition of strain AT3

Fatty acid	1	2	3	4	5	6
Anteiso- $C_{15:0}$	29.0	NA	<1	9.8	6.04	19.56
$C_{16:0}$	20.6	29.1	6.6	22.1	NA	NA
$C_{14:0}$	19.5	15.6	2.2	NR	8.03	NA
$C_{18:1n9}$	5.6	NA	31.9	12.2	NR	NA
Iso- $C_{14:0}$	5.6	NA	NA	NR	32.11	NA
Iso- $C_{15:0}$	5.5	11.6	NA	16.8	42.83	26.57

NA, no data available. Values are percentages of total fatty acids.

1, Strain AT3; 2, *Hydrogenoanaerobacterium saccharovorans*; 3, *Ruthenibacterium lactatiformans*; 4, *Acutalibacter muris*; 5, *Acetanaerobacterium elongatum*; 6, *Ruminococcus champanellensis*. Data from [Song et al. 2004], [Shkoporov et al. 2016], [Lagkouvardos et al. 2016], [Chen et al. 2004] and [Chassard et al. 2012].



**FIG. 3.** Graphical circular map of genome of strain AT3. From outside to centre: Genes on forward strand coloured by COGs categories (only genes assigned to COGs), genes on reverse strand coloured by COGs categories (only gene assigned to COGs), RNA genes (tRNAs green, rRNAs red), GC content and GC skew. COGs, Clusters of Orthologous Groups database; rRNA, ribosomal RNA; tRNA, transfer RNA.

annotated as hypothetical proteins. The distribution of genes into COGs functional categories of strain AT3 with its nearest neighbours' species is presented in Table 3 and Fig. 4. The numbers of orthologous proteins shared between genomes is shown in Table 4. The genome of the strain was deposited in EMBL-EBI (European Molecular Biology Laboratory–European

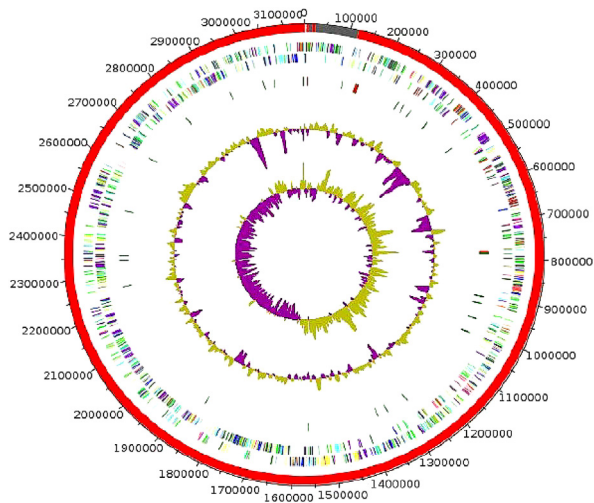
Bioinformatics Institute) under accession number OEJM0000000. The digital DNA–DNA hybridization values of strain AT3 compared to its closely related species ranged from 21.5% with *A. muris* to 33.7% with *R. champanellensis* and are shown in Table 5. The average amino acid identity between the strain AT3 and closely related species was evaluated (Table 6).

**TABLE 3.** Number of genes associated with 26 general COGs functional categories of strain AT3<sup>T</sup>

Code	1	2	3	4	5	6	7	8	Description
J	151	141	144	149	153	148	151	134	Translation
A	0	0	0	0	0	0	0	0	RNA processing and modification
K	201	222	191	282	256	195	181	138	Transcription
L	106	161	116	201	294	147	124	119	Replication, recombination and repair
B	0	0	0	1	0	0	0	0	Chromatin structure and dynamics
D	24	29	25	28	36	22	31	29	Cell cycle control, mitosis and meiosis
Y	0	0	0	0	0	0	0	0	Nuclear structure
v	42	69	48	98	123	60	80	49	Defence mechanisms
T	85	84	111	124	119	85	127	57	Signal transduction mechanisms
M	93	121	116	160	109	107	149	107	Cell wall/membrane biogenesis
N	8	45	49	5	37	57	9	8	Cell motility
Z	0	0	0	0	0	0	0	0	Cytoskeleton
w	0	0	0	0	0	0	0	0	Extracellular structures
U	14	23	20	44	47	13	17	17	Intracellular trafficking and secretion
O	58	53	56	56	62	59	66	45	Posttranslational modification, protein turnover, chaperones
X	5	16	6	22	22	25	16	15	Mobilome: prophages, transposons
C	148	149	126	109	111	99	108	82	Energy production and conversion
G	255	236	272	307	219	179	144	105	Carbohydrate transport and metabolism
E	227	236	191	193	135	157	126	113	Amino acid transport and metabolism
F	85	74	66	71	53	51	54	51	Nucleotide transport and metabolism
H	77	78	71	64	45	33	87	49	Coenzyme transport and metabolism
I	59	46	40	41	40	43	61	58	Lipid transport and metabolism
P	83	101	93	99	59	66	64	51	Inorganic ion transport and metabolism
Q	33	28	16	19	21	21	34	24	Secondary metabolites biosynthesis, transport and catabolism
R	249	284	245	292	296	236	295	182	General function prediction only
S	156	199	170	175	181	161	139	125	Function unknown

COGs, Clusters of Orthologous Groups database.

1, Strain AT3; 2, *Anaerotruncus colihominis*; 3, *Hydrogenoanaerobacterium saccharovorans*; 4, *Ruthenibacterium lactatiformans*; 5, *Acutalibacter muris*; 6, *Acetanaerobacterium elongatum*; 7, *Ruminococcus flavefaciens*; 8, *Ruminococcus champanellensis*.



**FIG. 4.** Graphical circular map of chromosome. From outside to centre: Genes on forward strand coloured by COGs categories (only genes assigned to COGs), genes on reverse strand coloured by COGs categories (only gene assigned to COGs), RNA genes (tRNAs green, rRNAs red), GC content and GC skew. COGs, Clusters of Orthologous Groups database; rRNA, ribosomal RNA; tRNA, transfer RNA.

**TABLE 4.** Numbers of orthologous proteins shared between genomes (upper right), average percentage similarity of nucleotides corresponding to orthologous protein shared between genomes (lower left) and numbers of proteins per genome (bold)

	1	2	3	4	5	6	7	8
1	<b>2868</b>	1240	1158	965	843	978	813	808
2	73.7%	<b>3656</b>	1183	6433	3823	987	806	823
3	61.3%	63.0%	<b>2932</b>	954	855	1028	814	818
4	65.7%	64.3%	60.7%	<b>3908</b>	818	847	847	758
5	64.5%	62.5%	59.8%	63.8%	<b>3823</b>	831	756	764
6	64.2%	63.9%	64.8%	63.3%	62.5%	<b>2746</b>	815	816
7	62.4%	60.8%	62.4%	59.9%	60.5%	62.3%	<b>3089</b>	843
8	64.4%	63.5%	62.1%	63.8%	63.5%	63.7%	66.0%	<b>2356</b>

1, Strain AT3; 2, *Anaerotruncus colihominis*; 3, *Hydrogenoanaerobacterium saccharovorans*; 4, *Ruthenibacterium lactatiformans*; 5, *Acutalibacter muris*; 6, *Acetanaerobacterium elongatum*; 7, *Ruminococcus flavefaciens*; 8, *Ruminococcus champanellensis*.

**TABLE 5.** Pairwise comparison of strain AT3 with other species using GGDC, formula 2 (DDH estimates based on identities/HSP length)<sup>a</sup>

	1	2	3	4	5	6	7	8
1	<b>100</b>	26.0% ± 2.4	26.4% ± 2.4	27.1% ± 2.4	21.5% ± 2.4	22.1% ± 2.4	22.6% ± 2.4	33.7% ± 2.4
2		<b>100</b>	27.3% ± 2.4	24.8% ± 2.4	21.1% ± 2.4	20.6% ± 2.4	36.0% ± 2.5	35.9% ± 2.4
3			<b>100</b>	32.6% ± 2.45	34.3% ± 2.5	19.4% ± 2.4	28.0% ± 2.5	35.5% ± 2.5
4				<b>100</b>	19.1% ± 2.3	27.1% ± 2.4	27.7% ± 2.5	34.1% ± 2.5
5					<b>100</b>	22.0% ± 2.4	34.5% ± 2.5	22.0% ± 2.4
6						<b>100</b>	34.1% ± 2.5	33.7% ± 2.5
7							<b>100</b>	21.1% ± 2.4
8								<b>100</b>

DDH, DNA-DNA hybridization; GGDC, Genome-to-Genome Distance Calculator; HSP, high-scoring segment pairs; rRNA, ribosomal RNA.

1, Strain AT3; 2, *Anaerotruncus colihominis*; 3, *Hydrogenoanaerobacterium saccharovorans*; 4, *Ruthenibacterium lactatiformans*; 5, *Acutalibacter muris*; 6, *Acetanaerobacterium elongatum*; 7, *Ruminococcus flavefaciens*; 8, *Ruminococcus champanellensis*.

<sup>a</sup>Confidence intervals indicate inherent uncertainty in estimating DDH values from intergenomic distances based on models derived from empirical test data sets. These results are consistent with 16S rRNA and phylogenomic analyses as well as GGDC results.

These values ranged from 47% with *R. flavefaciens* to 68.5% with *A. colihominis*.

## Discussion

When we compared the strain AT3 with the closest relative species differed by the catalase production, we found that his genome G+C content (63.7 vs. 41.9 to 54.6 for *A. colihominis*, *H. saccharovorans*, *R. lactatiformans*, *A. muris*, *A. elongatum*, *R. flavefaciens* and *R. champanellensis*, its closest relative species). The strain AT3 strain is phylogenetically close to *A. colihominis* but differs from it in Gram staining; *A. colihominis* is Gram staining positive while the new strain is Gram staining negative. The anteiso-C<sub>15:0</sub> (29%) is one of the major cellular fatty acid for the new strain, but it is absent from *A. colihominis*.

On the basis of the phenotypic, chemotaxonomic, genomic and phylogenetic characteristics, a novel bacterium isolated from the stool sample of a morbidly obese Frenchman after bariatric surgery, termed *Anaerotruncus massiliensis* sp. nov., is proposed. The type strain is strain AT3<sup>T</sup> = CSURP P2007<sup>T</sup> = DSM 100567<sup>T</sup>. A preliminary report of main characteristics was previously published as a new species announcement [39], but the present study reports the full characterization of this putative new species.

## Description of *Anaerotruncus massiliensis* sp. nov.

*Anaerotruncus massiliensis* (mas.si.li.en'sis, L. fem. adj., *massiliensis*, 'of Massilia,' the Latin name of Marseille) is a Gram-negative-staining, catalase positive, oxidase negative, nonmotile non-spore-forming and anaerobic rod 0.3 µm wide and 2.9 µm long. Sheep's blood Columbia agar-grown colonies were opalescent with a mean diameter 0.5 to 1.5 mm after 72 hours'

**TABLE 6.** Average amino acid identity values of strain AT3 compared to its phylogenetically close neighbours

	1	2	3	4	5	6	7	8
1	100	68.5% ± 18.5	54.0% ± 16.4	49.9% ± 15.6	48.1% ± 15.2	51.8% ± 16.5	47.0% ± 15.5	48.7% ± 15.6
2		100	52.9% ± 16.4	50.1% ± 16.7	46.9% ± 15.3	50.3% ± 16.2	45.9% ± 15.5	48.1% ± 15.5
3			100	48.7% ± 15.6	46.4% ± 15.4	53.2% ± 16.6	47.3% ± 16.1	48.8% ± 16.1
4				100	47.2% ± 15.3	47.4% ± 15.6	44.2% ± 15.1	46.7% ± 14.8
5					100	46.4% ± 15.1	45.2% ± 15.0	46.4% ± 14.9
6						100	47.3% ± 15.9	48.8% ± 15.8
7							100	54.7% ± 17.9
8								100

1, Strain AT3; 2, *Anaerotruncus colihominis*; 3, *Hydrogenoanaerobacterium saccharovorans*; 4, *Ruthenibacterium lactatiformans*; 5, *Acutalibacter muris*; 6, *Acetanaerobacterium elongatum*; 7, *Ruminococcus flavefaciens*; 8, *Ruminococcus champanellensis*.

incubation in anaerobic atmosphere. Its optimum growth temperature was 37°C, pH tolerance ranges from pH 6 to 8.5 and maximal saltiness for growth is 5 g/L of NaCl concentration. Using API strips, glycerol, erythritol, adonithol, methyl- $\beta$ -xylopyranoside, galactose, glucose, mannose, sorbitol, esculin, trehalose, inulin, glycogen, gentiobiose, tagatose and potassium 5-cetogluconate were positive. Using 50CH, glucose, maltose, mannose, trehalose, rhamnose were positive and aesculin and gelatin hydrolase was observed with API 20A strip; alkaline phosphatase, esterase (C-4), esterase lipase (C-8), acid phosphatase, naphthol-AS-BI-phosphohydrolase and  $\alpha$ -glucosidase were positive with API ZYM strip; indole production, nitrate reduction, alkaline phosphatase, arginine arylamidase, leucyl glycine arylamidase, phenylalanine arylamidase, leucine arylamidase, pyroglutamic acid arylamidase, tyrosine arylamidase, alanine arylamidase, glycine arylamidase, histidine arylamidase, glutamyl glutamic acid arylamidase and serine arylamidase were positive with rapid ID 32 A strip. Its major cellular fatty acids are; anteiso- $C_{15:0}$ ,  $C_{16:0}$  and  $C_{14:0}$ . The genome of this strain is 3 145 950 bp long with 63.6% G+C content. The type strain, AT3<sup>T</sup> (= CSURP P2007<sup>T</sup> = DSM 100567<sup>T</sup>) was isolated from the stool sample of a French morbidly obese man after bariatric surgery. The 16S rRNA gene sequence and whole-genome

shotgun sequence of strain AT3 were deposited in GenBank with accession numbers LN866995 and OEJM0000000, respectively.

### Conflict of Interest

None declared.

### Acknowledgements

The authors thank the Xegen Company ([www.xegen.fr](http://www.xegen.fr)) for automating the genomic annotation process. Financial support received from the French government through the Agence Nationale pour la Recherche (ANR), including the 'Programme d'Investissement d'Avenir' under the reference Méditerranée Infection 10-IAHU-03. This work was supported by Région Provence-Alpes-Côte d'Azur and European funding FEDER PRIMMI (Fonds Européen de Développement Régional-Plateformes de Recherche et d'Innovation Mutualisées Méditerranée Infection).