



HAL
open science

New Microbicidal Functions of Tracheal Glands: Defective Anti-Infectious Response to *Pseudomonas aeruginosa* in Cystic Fibrosis

Sonia Bastonero, Yannick Le Priol, Martine Armand, Christophe Bernard,
Martine Reynaud-Gaubert, Daniel Olive, Daniel Parzy, Sophie de Bentzmann,
Christian Capo, Jean-Louis Mege

► To cite this version:

Sonia Bastonero, Yannick Le Priol, Martine Armand, Christophe Bernard, Martine Reynaud-Gaubert, et al.. New Microbicidal Functions of Tracheal Glands: Defective Anti-Infectious Response to *Pseudomonas aeruginosa* in Cystic Fibrosis. PLoS ONE, 2009, 4 (4), pp.e5357. 10.1371/journal.pone.0005357 . hal-02420126

HAL Id: hal-02420126

<https://amu.hal.science/hal-02420126v1>

Submitted on 6 Jan 2020

HAL is a multi-disciplinary open access archive for the deposit and dissemination of scientific research documents, whether they are published or not. The documents may come from teaching and research institutions in France or abroad, or from public or private research centers.

L'archive ouverte pluridisciplinaire **HAL**, est destinée au dépôt et à la diffusion de documents scientifiques de niveau recherche, publiés ou non, émanant des établissements d'enseignement et de recherche français ou étrangers, des laboratoires publics ou privés.



Distributed under a Creative Commons Attribution 4.0 International License

New Microbicidal Functions of Tracheal Glands: Defective Anti-Infectious Response to *Pseudomonas aeruginosa* in Cystic Fibrosis

Sonia Bastonero¹, Yannick Le Priol², Martine Armand³, Christophe S. Bernard⁴, Martine Reynaud-Gaubert⁵, Daniel Olive⁶, Daniel Parzy², Sophie de Bentzmann⁴, Christian Capo¹, Jean-Louis Mege^{1*}

1 Unité de Recherche sur les Maladies Infectieuses Tropicales et Emergentes, CNRS UMR 6236, Faculté de Médecine, Marseille, France, **2** Transcriptomic platform, Institut de Médecine Tropicale du Service de Santé des Armées, Marseille, France, **3** UMR Nutriments Lipidiques et Prévention des Maladies Métaboliques, INSERM U476 INRA UMR1260, Faculté de Médecine, Marseille, France, **4** Laboratoire d'Ingénierie des Systèmes Macromoléculaires, CNRS-IMM-UPR 9027, Marseille, France, **5** Fédération des Maladies Respiratoires, Hôpital de Sainte Marguerite, Marseille, France, **6** Institut Paoli Calmettes, INSERM Unité 891, Centre de Recherche en Cancérologie, Marseille, France

Abstract

Tracheal glands (TG) may play a specific role in the pathogenesis of cystic fibrosis (CF), a disease due to mutations in the *cftr* gene and characterized by airway inflammation and *Pseudomonas aeruginosa* infection. We compared the gene expression of wild-type TG cells and TG cells with the *cftr* Δ F508 mutation (CF-TG cells) using microarrays covering the whole human genome. In the absence of infection, CF-TG cells constitutively exhibited an inflammatory signature, including genes that encode molecules such as IL-1 α , IL- β , IL-32, TNFSF14, LIF, CXCL1 and PLA2. In response to *P. aeruginosa*, genes associated with IFN- γ response to infection (CXCL10, IL-24, IFN γ R2) and other mediators of anti-infectious responses (CSF2, MMP1, MMP3, TLR2, S100 calcium-binding proteins A) were markedly up-regulated in wild-type TG cells. This microbicidal signature was silent in CF-TG cells. The deficiency of genes associated with IFN- γ response was accompanied by the defective membrane expression of IFN γ R2 and altered response of CF-TG cells to exogenous IFN- γ . In addition, CF-TG cells were unable to secrete CXCL10, IL-24 and S100A8/S100A9 in response to *P. aeruginosa*. The differences between wild-type TG and CF-TG cells were due to the *cftr* mutation since gene expression was similar in wild-type TG cells and CF-TG cells transfected with a plasmid containing a functional *cftr* gene. Finally, we reported an altered sphingolipid metabolism in CF-TG cells, which may account for their inflammatory signature. This first comprehensive analysis of gene expression in TG cells proposes a protective role of wild-type TG against airborne pathogens and reveals an original program in which anti-infectious response was deficient in TG cells with a *cftr* mutation. This defective response may explain why host response does not contribute to protection against *P. aeruginosa* in CF.

Citation: Bastonero S, Le Priol Y, Armand M, Bernard CS, Reynaud-Gaubert M, et al. (2009) New Microbicidal Functions of Tracheal Glands: Defective Anti-Infectious Response to *Pseudomonas aeruginosa* in Cystic Fibrosis. PLoS ONE 4(4): e5357. doi:10.1371/journal.pone.0005357

Editor: Dominik Hartl, LMU University of Munich, Germany

Received: November 4, 2008; **Accepted:** January 14, 2009; **Published:** April 28, 2009

Copyright: © 2009 Bastonero et al. This is an open-access article distributed under the terms of the Creative Commons Attribution License, which permits unrestricted use, distribution, and reproduction in any medium, provided the original author and source are credited.

Funding: This work was supported by grants from the Association « Vaincre la Mucoviscidose ». S. Bastonero is supported by a fellowship from « Vaincre la Mucoviscidose ». The funder had no role in study design, collection, analysis, and interpretation of data, writing of the paper, and decision to submit it for publication.

Competing Interests: The authors have declared that no competing interests exist.

* E-mail: Jean-Louis.Mege@univmed.fr

Introduction

Cystic fibrosis (CF), the most common fatal hereditary disease in the Caucasian population, is due to mutations in the Cystic Fibrosis Transmembrane conductance Regulator (*cftr*) gene. Over 1500 mutations have been described and the most frequent of these is a phenylalanine deletion in position 508 (Δ F508) (<http://www.genet.sickkids.on.ca/cftr/mutations>). CF is characterized by exocrine gland alteration in multiple organs, but its major manifestation is chronic lung disease due to airway inflammation and bacterial colonization [1]. The precise relationship between *cftr* mutations and the development of lung disease has yet to be determined. The lungs of CF newborns exhibit abnormal mucus secretion [2], and early inflammatory responses are present in the airways of CF fetuses and newborns [3,4]. The excessive production of interleukin (IL)-1, IL-6 and IL-8 by epithelial cells with a mutated *cftr* gene [5–7] also suggests that an unrestricted

inflammatory reaction occurs in the airways of CF patients. This excessive inflammatory reaction is not protective against opportunistic pathogens such as *Pseudomonas aeruginosa*, a gram-negative bacterium that usually does not infect the lungs of healthy individuals, but is largely responsible for airway obstruction and the decline of pulmonary function in CF patients [8,9]. It has been found that a large arsenal of products secreted by *P. aeruginosa* contributes to persistent infection of the lungs of CF patients and subsequent lung lesions [9].

Although their role is less known than that of epithelial cells [10], tracheal glands (TG) may play a critical role in the pathophysiology of CF [11]. TG cells express high levels of CFTR as compared with other bronchial epithelial cell types [12], and secrete a wide variety of proteins including mucins, antibacterial molecules, cytokines, chemokines and lipid mediators [13–16]. These properties would confer a role to TG in lung homeostasis as already described for epithelial cells and in lung

defense against infection [17]. However, the role of TG with a functional *cftr* gene or the *cftr* Δ F508 mutation (CF-TG) in pathogen persistence has not been investigated. The elevated viscosity of TG fluid may be an important factor in promoting airway disease and bacterial colonization [18]. Here, we took advantage of the existence of TG and CF-TG cell lines [19,20] to compare their gene expression profiles using microarrays covering the entire human genome. Soluble products released by a *P. aeruginosa* strain isolated from a CF patient stimulated the expression of genes critically involved in host defense in TG cells but not in CF-TG cells. This deficiency was related to the impairment of the IFN- γ pathway, which is essential for host microbicidal response. Hence, the inability of CF-TG cells to activate genes with microbicidal competence may explain why host response does not contribute to protection against *P. aeruginosa* in cystic fibrosis.

Results

Transcriptional Profile of CF-TG Cells

We analyzed the genes modulated in CF-TG cells compared to wild-type (wt) TG cells by whole-genome microarrays. We found that 157 genes were significantly modulated consisting of 69 up-regulated genes and 88 down-regulated genes. The 69 up-regulated genes in CF-TG cells (see Table S1 for the entire microarray database) were classified by families according to their known function (Figure 1). They are distributed in three groups of genes. Thirty-three percent of genes (23 genes) belong to families involved in the innate immune response (chemokines/cytokines/growth factors, inflammatory response, matrix remodeling). They included IL-1 α , IL-1 β , IL-32, TNF ligand superfamily member 14 (TNFSF14 also known as LIGHT), leukemia inhibitory factor

(LIF), CXCL1 (Gro- α) and plasminogen activator urokinase (PLAU) (Table S1). Thirty-five percent of genes belong to the receptor/signal transduction and transcription regulation families and 32% of genes encoded proteins involved in unrelated cell functions. Note that most of the up-regulated genes in CF-TG cells exhibited a fold change (FC) lower than 3.0 (52/69 genes, Table S1). The 88 down-regulated genes in CF-TG cells compared to wt TG cells (see Table S2) belong to the receptor/signal transduction and transcription regulation families (40% of the total number of down-regulated genes) while 58% of these genes encoded molecules involved in adhesion, cytoskeletal architecture, cell communication, transport and ion transport, cell cycle, proliferation, metabolism and protein degradation. Only two genes involved in the innate immune response were down-regulated (Figure 1). These results showed that the transcriptional profile of CF-TG cells was moderately inflammatory compared to that of wt TG cells.

Proteins Released by *P. aeruginosa* strains

The bacterial strain isolated from one CF patient and the reference PAO1 strain were cultured overnight, and the extracellular products were analyzed by electrophoresis. The two protein profiles were markedly different (Figure 2). Some proteins were released only by the PAO1 strain (Table 1). This is the case for elastase, LasB, (upper arrow, Figure 2), the Type 2 secretion system (T2SS) Xcp classical substrate that is the major secreted protein and band 12 (lower arrow, Figure 2), which corresponds to the peptide (about 20 kDa) cleaved from the proenzyme LasB before activation. Other proteins, including OprF (bands 11 and 18) and a probable T2SS substrate since it is absent in a Δ *xcp* Δ *xqh* mutant [21], result confirmed by one of us (G. Michel in SdB's team, personal unpublished data) (bands 3 and 10), were released

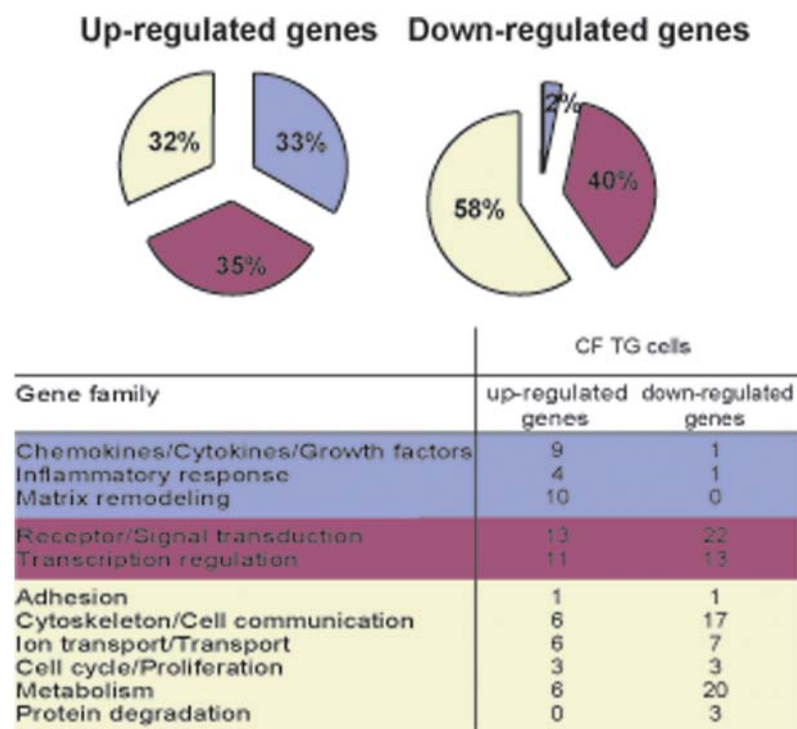


Figure 1. Functional categories of genes in CF-TG cells. The genes expressed by wt TG and CF-TG cells were analyzed by microarrays. Up-regulated and down-regulated genes in CF-TG cells compared to wt TG cells were classified in families according to their known function. The major biological processes are represented by wedges, including the percentage of 69 up-regulated and 88 down-regulated genes. doi:10.1371/journal.pone.0005357.g001

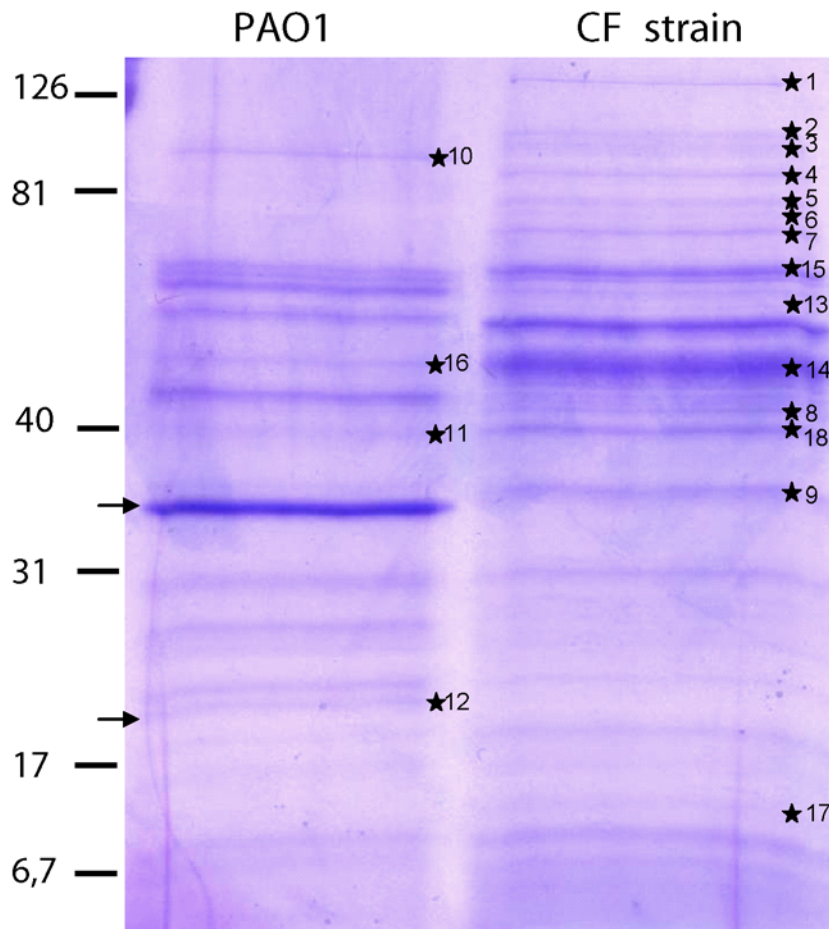


Figure 2. Analysis of protein content of the PAO1 and the CF strain supernatants. Proteins secreted by *P. aeruginosa* after a 18 h-culture (*) were cut out from Coomassie blue stained gels and subjected to mass spectrometry analysis using MALDI-TOF. Arrows designate the LasB protein-derivatives.

doi:10.1371/journal.pone.0005357.g002

by both strains (Table 1). Finally, different proteins were released only by the CF strain. They included bands 1, 2, 4–9, 13, 14 (surprisingly, FliC was only detected in extracellular products of the CF strain), 15 and 17 (Table 1). The band 17 corresponds to the Hcp1 protein of the T6SS that has been detected in sputum of CF patients [22]. The band 9 (PstS extracellular phosphate-binding protein), recently described to form PstS-rich appendages through the T2SS HxC apparatus, is induced during phosphate limitation, thus playing a key role in *P. aeruginosa* virulence assessed in a murine model [23]. Bands 6–8 and band 13, a mixture of at least two proteins, are classically produced under phosphate limitation as PstS. This protein pattern suggests that the phosphate limitation-like secretome of the CF bacterial strain is remarkably stable even after bacterial culture. As the CF bacterial strain is more relevant than the reference strain for investigation of glandular response in the context of CF, we performed further experiments with extracellular products from the clinical *P. aeruginosa* CF strain.

Transcriptional Profile of wt TG and CF-TG Cells in Response to *P. aeruginosa*

We wondered whether *P. aeruginosa*-secreted products affected the transcriptional response of wt TG cells and CF-TG cells. First, *P. aeruginosa*-secreted products significantly up-regulated the expression of 78 genes (see Table S3, and Figure 3) in wt TG

cells compared to unstimulated wt TG cells. For the majority of these genes (52), the FC value was higher than 3.0 and could reach a 50-fold increase (Table S3). Forty-three percent of the up-regulated genes encode proteins involved in the innate immune response, 34% of genes belong to receptor/signal transduction and transcription regulation families, and 23% of genes encode proteins involved in other biological processes (Figure 3A). *P. aeruginosa*-secreted products moderately inhibited the expression of 33 genes by 1.5 to 3.0 fold (see Table S4). Among them, 48% of genes belong to the receptor/transduction signal and transcription regulation families and 52% of genes encode proteins involved in adhesion, cytoskeletal architecture, cell communication, transport, cell cycle, proliferation, metabolism, apoptosis and protein degradation. No gene belonging to the innate immune response family was down-modulated (Table S4 and Figure 3B).

Second, *P. aeruginosa*-secreted products also affected the transcriptional response of CF-TG cells compared to unstimulated CF-TG cells. The number of modulated genes (97) was similar to that found in stimulated TG cells (111) but the level of gene modulation was lower. Indeed, among 67 genes significantly up-regulated in CF-TG cells, the FC value did not exceed 8 fold and was lower than 3.0 for the majority of them (52/67) (Table S5). The distribution of these genes in functional families was similar to that of TG cells stimulated with *P. aeruginosa* products (Figure 3C): 41% of them encode proteins involved in the innate immune response, 34%

Table 1. Secretomes of the *P. aeruginosa* strains.

Numbers on gel	PA	Name	Function	MW (kDa)	PAO1 strain	CF strain
1	PA4270	DNA-directed RNA polymerase beta chain		151	–	++
2	ND	ND	ND	110	–	++
3 and 10	PA0572	hypothetical protein	unknown function probable T2SS substrate	100	+	++
4	PA4266	Elongation factor G		78	–	++
5	PA4761	DnaK protein		68	–	++
6	PA3319	PlcN	non-hemolytic phospholipase C precursor	77	–	++
7	PA2635	Hypothetical protein	PhoX, predicted phosphatase	74	–	++
8	PA0347	GlpQ	glycerophosphoryl diester phosphodiesterase, periplasmic	42	–	++
9	PA5369	PstS	phosphate ABC transporter, periplasmic phosphate-binding protein, PstS	34	–	++
10 and 3	PA0572	hypothetical protein	unknown function probable T2SS substrate	100	+	++
11 and 18	PA1777	OprF	major porin and structural outer membrane OprF precursor	38	+	++
12	PA3724	LasB	prepeptide of LasB	21	+	–
13	PA3770	GuaB	inosine-5'-monophosphate dehydrogenase	52	–	+
13	PA3910	hypothetical protein	phosphodiesterase/alkaline phosphatase D	59	–	+
14	PA1092	FliC	flagellin type B	49	–	+++
15	PA4385	GroEL	chaperones & heat shock proteins	57	–	+
16	PA2623	Icd	isocitrate dehydrogenase	46	+	–
17	PA0085	Hcp1	type VI secretion system effector, Hcp1 family	17	–	+
18 and 11	PA1777	OprF	major porin and structural outer membrane OprF precursor	38	+	++

Proteins secreted by the *P. aeruginosa* strain isolated from the patient with CF (CF strain) and the PAO1 strain were cut out from Coomassie blue stained gels and subjected to mass spectrometry analysis using MALDI-TOF. PA is the gene number on genome annotation available at <http://www.pseudomonas.com>. ND: not determined due to undetectable ions.

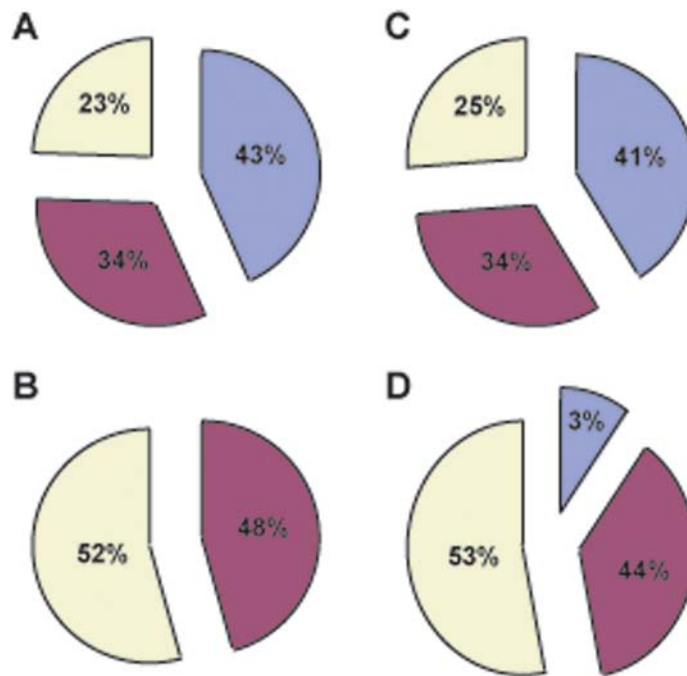
doi:10.1371/journal.pone.0005357.t001

belong to receptor/signal transduction and transcription regulation families, and 25% of genes encode molecules involved in other cell functions. *P. aeruginosa*-secreted products inhibited the expression of 30 genes in CF-TG cells (Table S6); most of these genes exhibited a FC comprised between 1.5 and 3.0. Only one inflammatory gene was down-modulated in *P. aeruginosa*-stimulated CF-TG cells. As found in wt TG cells stimulated with *P. aeruginosa* products, 44% of genes belong to receptor/transduction signal and transcription regulation families, and 53% of genes encode proteins involved in other cell functions (Figure 3D).

Analysis of Modulated Genes in *P. aeruginosa*-Stimulated Cells

Since the distribution of genes was similar in TG and CF-TG cells stimulated with *P. aeruginosa*-secreted products, we wondered which genes were commonly or specifically modulated. Using a Venn diagram (Figure 4), we first reported an inflammatory signature consisting of 46 genes commonly modulated in both stimulated cell lines (grayed in tables S3, S4, S5, S6). Among them, seven genes were also up-regulated in unstimulated CF-TG cells (grayed in Table S1). The expression of these genes, namely those encoding IL-1 α , IL-1 β , IL-32, TNFSF14, LIF, CXCL1 and PLA2, was validated by real time RT-PCR. The fold changes found in microarray and real-time PCR experiments related with each other (Figure 5). Second, 59 genes were modulated in wt TG cells stimulated with *P. aeruginosa*-secreted products, but not in stimulated CF-TG cells (Figure 4). They included 17 genes

involved in the innate immune response such as those that encode CXCL10, which was up-regulated by 49 fold, granulocyte-macrophage colony stimulating factor (CSF2), IL-24, matrix metalloproteinases (MMP1 and MMP3), IFN- γ receptor (IFN γ R2) and toll-like receptor (TLR2). We called this group of genes microbicidal signature. The expression of three genes encoding S100 calcium-binding proteins A was also up-regulated. Real time RT-PCR confirmed the data obtained with the microarray approach. *P. aeruginosa*-secreted products strongly induced the expression of the genes encoding CXCL10, IL-24, TLR2, IFN γ R2 and S100A8 in wt TG cells, but weakly in CF-TG cells. The differences between the FC found in wt TG cells and CF-TG cells were significant ($P < 0.05$) (Figure 6, compare lines 1 and 2). Since S100A8 forms a heterodimer with S100A9 (calprotectin) [24], we also studied the expression of the gene encoding S100A9. This gene was significantly ($P < 0.05$) higher in wt TG cells stimulated with *P. aeruginosa* products than in stimulated CF-TG cells (Figure 6). Third, 49 genes were modulated in CF-TG cells stimulated with *P. aeruginosa* products but were unaffected in stimulated wt TG cells (Figure 4). Among them, 11 were involved in the innate immune response. They included the genes that encoded IL-8, CXCL2, IL-1 receptor antagonist (IL1RN), a powerful immunoregulatory molecule, lipocalin (LCN2) and serum amyloid (SAA1 and SAA2) (compare Tables S5 and S3). Taken together, these results showed that CF-TG cells stimulated with *P. aeruginosa* products exhibited a specific transcriptional program in which microbicidal signature was defective.



Gene family	wt TG cells		CF-TG cells	
	up-regulated gene	down-regulated gene	up-regulated gene	down-regulated gene
Chemokines/Cytokines/Growth factors	17	0	12	1
Inflammatory response	12	0	11	0
Matrix remodeling	5	0	4	0
Receptor/Signal transduction	17	4	14	5
Transcription regulation	10	12	9	8
Adhesion	2	0	0	1
Cytoskeleton/Cell	2	6	3	6
Ion transport/Transport	5	3	9	2
Cell cycle/Proliferation	1	3	2	2
Metabolism	6	2	3	2
Apoptose	1	1	0	2
Protein degradation	0	2	0	1

Figure 3. Functional categories of genes in stimulated TG cells. The genes expressed by wt TG and CF-TG cells stimulated with *P. aeruginosa*-secreted products were analyzed by microarrays. Up-regulated and down-regulated genes were classified in families according to their known function. The major biological processes are represented by wedges, including the percentage of modulated genes. Seventy eight genes were up-regulated (A) and 33 genes were down-regulated (B) in stimulated wt TG cells; 67 genes were up-regulated (C) and 30 genes were down-regulated (D) in stimulated CF-TG cells.

doi:10.1371/journal.pone.0005357.g003

Transcriptional Program and *cflr* Mutation

We wondered if the transfection of CF-TG cells with a plasmid containing a functional *cflr* gene induced a transcriptional pattern similar to that of wt TG cells. First, we assessed the expression of genes encoding IL-1 α , IL-1 β , IL-32, TNFSF14, LIF, CXCL1 and PLA2, which represented the constitutive inflammatory signature of CF-TG cells, by real-time quantitative RT-PCR (qRT-PCR). We clearly demonstrated that the *cflr* gene transfer corrected the constitutive inflammation of CF-TG cells. Indeed, the ratio of the gene expression levels of *cflr*-transfected CF-TG cells and wt TG cells was near 1, while it was significantly increased in CF-TG cells compared to wt TG cells (Table 2). In contrast, the transfection of CF-TG cells with a control plasmid did not affect the gene expression of CF-TG cells (data not shown). Second, we selected 6 genes from the microbicidal signature that were up-regulated in wt

TG cells stimulated with *P. aeruginosa* products but not in stimulated CF-TG cells, namely the genes that encode CXCL10, IL-24, TLR2, IFN γ R2, S100A8 and S100A9. When CF-TG cells were transfected with a functional *cflr* gene and stimulated with *P. aeruginosa*-secreted products, they expressed the transcriptional signature characteristics of wt TG cells stimulated with *P. aeruginosa* products. Indeed, the FC of the genes encoding CXCL10, IL-24, IFN γ R2, TLR2, S100A8 and S100A9 were significantly ($P < 0.05$) higher in *cflr*-transfected CF-TG cells than in CF-TG cells, and were near of those of the genes expressed by wt TG cells stimulated with *P. aeruginosa* products (Figure 6). Again, the transfection of CF-TG cells with a control plasmid did not modify the gene expression of CF-TG cells in response to *P. aeruginosa* products (data not shown). Taken together, these results demonstrated that the constitutive inflammatory program and

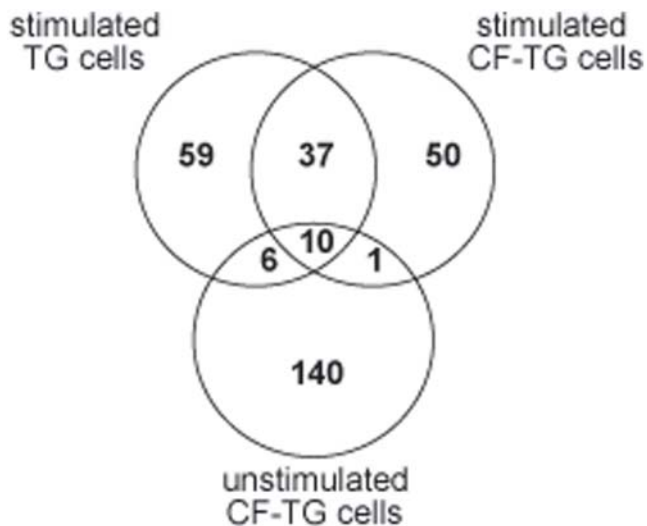


Figure 4. Venn diagram of differentially gene expression. A total of 157 modulated genes in CF-TG cells, 111 in wt TG cells stimulated with *P. aeruginosa*-secreted products and 98 in CF-TG cells stimulated with *P. aeruginosa* products were compared. Intersection showed 46 genes modulated within wt TG and CF-TG cells stimulated with *P. aeruginosa*-secreted products, and 10 genes were common in the three groups of cells. doi:10.1371/journal.pone.0005357.g004

the defective microbicidal signature of CF-TG cells were related to the *cftr* Δ F508 mutation.

Functional Analyses of Inflammatory and Microbicidal Signatures of CF-TG cells

Since the expression of the genes that encode IL-1 α , IL- β , LIF and CXCL1 was higher in CF-TG cells when compared to that of wt TG cells, we wondered whether the spontaneous release of these inflammatory mediators after 24 h of culture was also increased in CF-TG cells. The cytokine content of cell supernatants was determined by ELISA. The spontaneous release of IL-1 α , IL- β , LIF and CXCL1 was significantly ($P < 0.05$) increased in CF-TG cells (Table 3), demonstrating that the transcriptional inflammatory signature of CF-TG cells corresponded to a functional signature.

Next, we attempted to relate the silencing microbicidal signature in CF-TG cells with the expression of effectors. First, we studied the release of CXCL10, IL-24, S100A8/S100A9 and TNFSF14 by wt TG cells and CF-TG cells stimulated with *P. aeruginosa*-secreted products by ELISA. *P. aeruginosa* products were unable to stimulate the release of CXCL10, IL-24, S100A8/S100A9 and TNFSF14 by CF-TG cells but clearly stimulated their secretion by wt TG cells (Figure 7). This inability of CF-TG cells to produce cytokines in response to *P. aeruginosa*-secreted products was specific of cytokines involved in microbicidal response. Indeed, the release of IL-1 α and LIF was significantly increased ($P < 0.05$) in CF-TG cells stimulated with *P. aeruginosa* products compared to resting CF-TG cells (4950 ± 50 vs. 4200 ± 140 pg/ 2×10^6 cells for IL-1 α ; 425 ± 42 vs. 45 ± 7 pg/ 2×10^6 cells for LIF). Second, the membrane expression of IFN γ R2 and TLR2 proteins by wt and CF-TG cells was studied by flow cytometry. Clearly, the membrane expression of IFN γ R2 and TLR2 was lower in CF-TG cells stimulated with *P. aeruginosa*-secreted products than in stimulated wt TG cells (Figure 8A). The defective expression of IFN γ R2 had functional consequences. Indeed, the treatment of wt TG cells with human recombinant IFN γ resulted in the increased

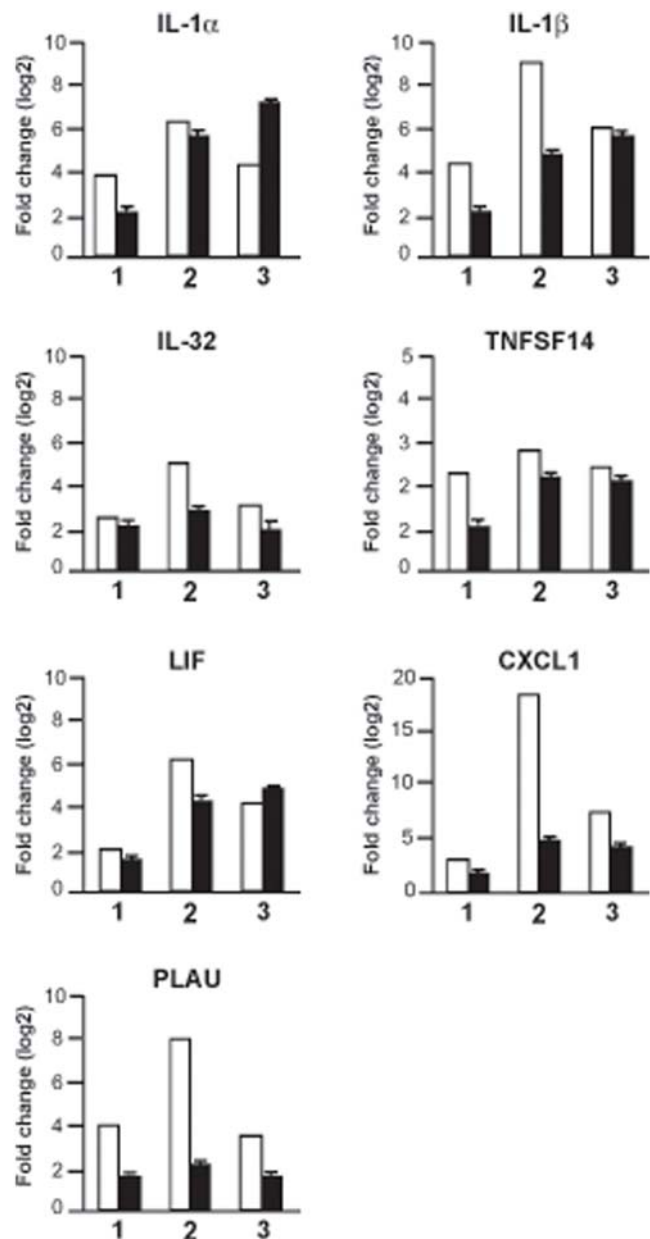


Figure 5. Validation of seven target sequences using qRT-PCR. The expression levels of seven genes commonly regulated by CF-TG cells and wt TG cells stimulated with *P. aeruginosa*-secreted products were determined by microarray (white bar) and qRT-PCR (black bar). The results of microarrays are expressed as the log₂ ratio of the fold change, and the results of qRT-PCR represent means \pm SEM of three experiments performed in triplicate. (1) unstimulated CF-TG cells vs. unstimulated wt TG cells; (2) stimulated vs. unstimulated wt TG cells; (3) stimulated vs. unstimulated CF-TG cells. doi:10.1371/journal.pone.0005357.g005

expression of genes encoding IFN γ R2, IL-24 and CXCL10. In contrast, IFN γ was unable to stimulate their expression in CF-TG cells (Figure 8B), suggesting that CF-TG cells were unable to mount a microbicidal program even in response to IFN γ .

Altered Sphingolipid Pathway in CF-TG cells

It has been recently shown that altered metabolism of sphingolipids due to defective acidification of intracellular vesicles might account for constitutive inflammation of lungs from *cftr*-

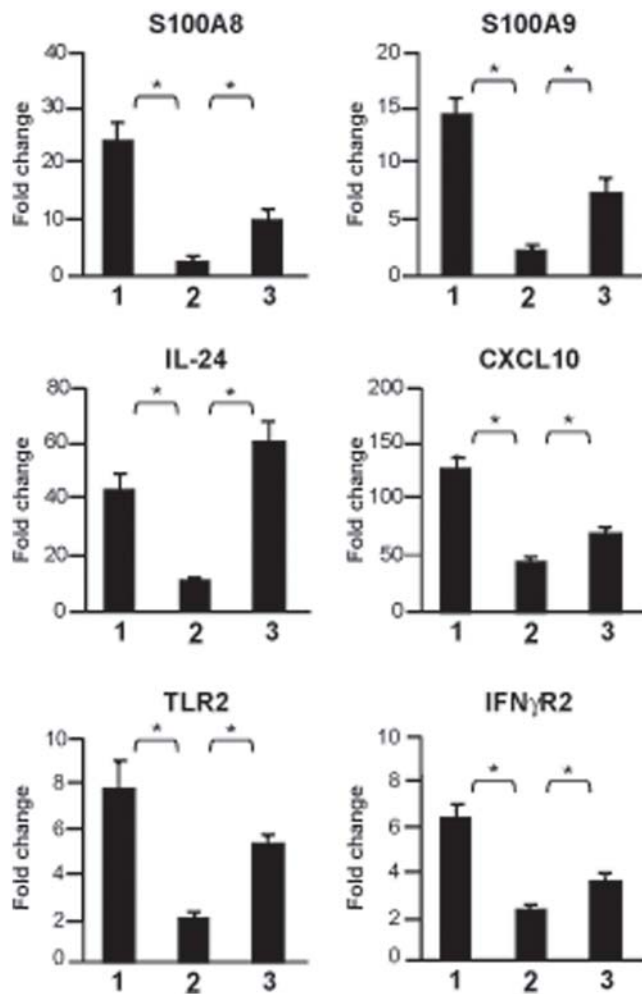


Figure 6. Impaired immune response in *P. aeruginosa*-stimulated CF-TG cells. The expression levels of six genes involved in the innate immune response were studied by qRT-PCR. Results, which represent means \pm SEM of three experiments performed in triplicate, are expressed as fold change. (1) stimulated vs. unstimulated wt TG cells; (2) stimulated vs. unstimulated CF-TG cells; (3) stimulated vs. unstimulated *cfr*-transfected CF-TG cells. * P <0.05. doi:10.1371/journal.pone.0005357.g006

deficient mice [25]. We wondered if such mechanism was found in CF-TG cells and may account for their inflammatory signature. First, the analysis of microarray data suggests an imbalance in sphingolipid metabolism. It revealed that the expression of galactosyl-ceramidase was down-regulated in CF-TG cells compared to wt TG cells (Table S2). Several key components of the ceramide metabolism are represented in the network of modulated genes in CF-TG cells (Figure 9). They included the enzymes involved in the sphingomyelin degradation pathway, i.e. sphingomyelin phosphodiesterase 1 (SMPD1), N-acylsphingosine amidohydrolase 2 (ASAH2), sphingosine kinase (SPHK) 1 and 2. Interestingly, SMPD1, ASAH2 and downstream genes were down-modulated in CF-TG cells as compared to wt TG cells. In contrast, genes encoding SPHK1 and related genes were up-regulated. Note that several transcription factors, including SP1, SP3 and CTNND1, were down-regulated in CF-TG cells compared to wt TG cells and that the SFTPB gene encoding the SP-B protein involved in the reduction of pulmonary surfactant properties [26] was up-regulated in CF-TG cells.

Table 2. Inflammatory program of CF-TG cells transfected with *cfr* gene.

Gene	fold change	
	CF-TG cells/wt TG cells	<i>cfr</i> -transfected CF-TG cells/wt TG cells
IL-1 α	4.3 \pm 0.4	1.2 \pm 0.1*
IL-1 β	4.5 \pm 0.7	1.6 \pm 0.3*
IL-32	4.6 \pm 0.7	1.7 \pm 0.4*
TNFSF14	2.1 \pm 0.2	1.7 \pm 0.1
LIF	2.7 \pm 0.2	0.8 \pm 0.1*
CXCL1	3.7 \pm 0.2	0.7 \pm 0.05*
PLAU	2.9 \pm 0.1	0.8 \pm 0.1*

The expression levels of seven commonly regulated genes were determined by qRT-PCR. The results are expressed as the fold changes between CF-TG cells and wt TG cells, and between CF-TG cells transfected with *cfr* gene and wt TG cells. They represent means \pm SEM of three experiments.

* P <0.05.

doi:10.1371/journal.pone.0005357.t002

Second, sphingolipids were quantified in wt TG and CF-TG cells. Galactosyl-ceramides (galactocerebrosides) were significantly (P <0.01) increased in CF-TG cells as compared to wt TG cells while ceramide levels were similar in CF-TG cells and wt TG cells (Figure 10). Third, wt TG cells were treated with bafilomycin A1 and chloroquine to alkalize intracellular vesicles, and the inflammatory signature of wt TG cells was determined. Bafilomycin A1 used at 300 nM significantly increased the expression of genes encoding IL-1 α , IL-1 β , IL-32, TNFSF14, LIF, CXCL1 and PLAU (Figure 11A). Chloroquine at 200 μ M also increased the expression of the inflammatory signature of wt TG cells (Figure 11B). Doses of 30 nM of bafilomycin A1 and 20 μ M of chloroquine did not affect the expression of inflammatory genes in wt TG cells (data not shown). Taken together, these results suggest that altered metabolism of sphingolipids and defective acidification of intracellular organelles may account for the inflammatory signature of CF-TG cells.

Discussion

We wondered whether TG may play a role in airway defense against *P. aeruginosa* since they are known to secrete a wide variety of molecules involved in bacterial defense [13–16] and that the increased viscosity of TG fluid in CF may favor bacterial infection [18]. We first selected a *P. aeruginosa* strain, which was the first strain from clone A lineage isolated from a Δ F508 homozygous

Table 3. Release of inflammatory cytokines by TG cells.

Cytokines	wt TG cells	CF-TG cells
IL-1 α	1975 \pm 125	4200 \pm 150*
IL-1 β	0.035 \pm 0.015	2.5 \pm 0.15*
LIF	0	45 \pm 6.5*
CXCL1	4200 \pm 85	7500 \pm 375*

The spontaneous release of inflammatory cytokines by wt TG cells and CF-TG cells was determined by ELISA. The results are expressed in pg per 2×10^6 cells. They represent means \pm SEM of three experiments.

* P <0.05.

doi:10.1371/journal.pone.0005357.t003

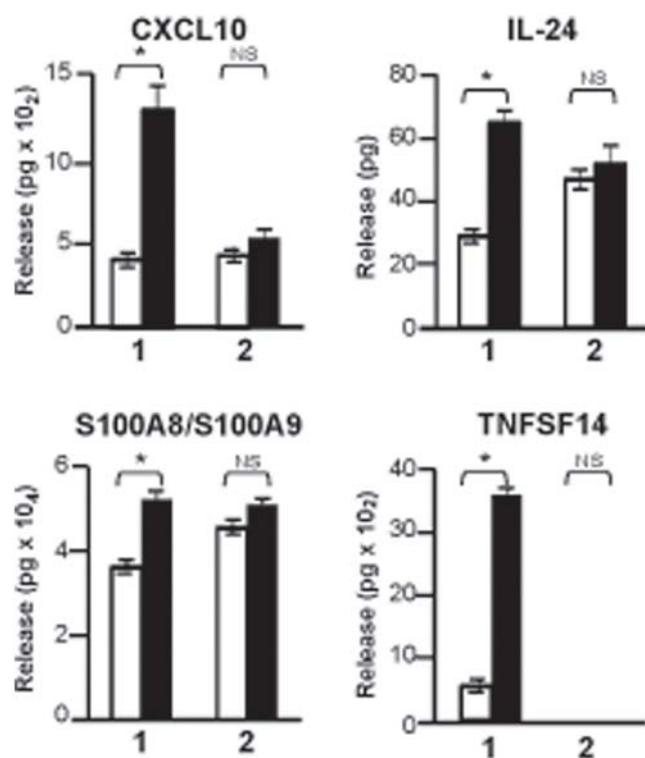


Figure 7. Release of cytokines of the innate immune response by TG cells. Wild type TG and CF-TG cells (2×10^6 cells per assay) were incubated in the absence (white bar) or presence (black bar) of *P. aeruginosa*-secreted products for 24 h. The release of cytokines of the innate immune response by wt TG cells (1) and CF-TG cells (2) was determined by ELISA. The results are expressed in pg of cytokines. They represent means \pm SEM of three experiments. * $P < 0.05$. NS: non significant.

doi:10.1371/journal.pone.0005357.g007

patient. As bacteria do not reach the bronchial epithelium but rather stick in the viscous mucus overlaying the epithelium [27,28], we chose to use extracellular products released by *P. aeruginosa* but not viable bacteria. It is likely that these released products reach glands from the epithelium surface since these two compartments are connected through connecting tubes. In addition, it has been demonstrated that the rhinovirus infection of submucosal gland cells induces mucin production [29]. Consequently, we stimulated TG cells with products secreted by a strain of *P. aeruginosa* isolated from a patient with CF.

We found that *P. aeruginosa*-secreted products stimulated a microbicidal response in wt TG cells dependent, at least in part, on the IFN- γ pathway. First, the expression of genes encoding mediators such as CXCL10, IL-24, TLR2, IFN γ R2 and S100 calcium-binding proteins A was up-regulated. CXCL10 (interferon-gamma-inducible protein 10, IP10) is a target of the IFN- γ pathway [30]. IL-24 is able to stimulate IFN- γ production by mononuclear cells besides its major role in wound healing and cell proliferation [31]. Second, the expression of the receptor of IFN- γ (IFN γ R2) by wt TG cells was increased in response to *P. aeruginosa*-secreted products. Third, adding IFN γ to wt TG cells up-regulated the expression of genes encoding IFN γ R2, IL-24 and CXCL-10, suggesting that the IFN γ pathway plays a major role in the microbicidal response of wt TG cells to *P. aeruginosa* products. The increased membrane expression of TLR2 by wt TG cells in response to *P. aeruginosa*-secreted products may also participate to innate immune response. It has been demonstrated that TLR2

recognizes *P. aeruginosa* [32] and that this pathogen activates airway epithelial cells through recognition by TLR2 [33]. The expression of S100 calcium-binding proteins A8 (Mrp8) and A9 (Mrp14) was also markedly up-regulated in TG cells. These proteins display potent antimicrobial activity [24,34], and are expressed in bronchial epithelial cells exposed to *P. aeruginosa* [35]. S100A8 and S100A9 also interact with TLR4 to amplify phagocyte activation [36], and are under the control of IL-10 family members [37]. Finally *P. aeruginosa*-secreted products dramatically increased the release of TNFSF14 by wt TG cells. TNFSF14 is known to be expressed by T lymphocytes [38] and dendritic cells [39]. TNFSF14 that belongs to the TNF superfamily is involved in inflammation and immune response through its role on IFN- γ [40] and IL-12 [41] production. To our knowledge, this is the first demonstration that TNFSF14 is secreted by wt TG cells.

We also found that numerous genes including inflammatory genes were constitutively up-regulated in CF-TG cells compared to wt TG cells. The moderate inflammatory signature of CF-TG cells consisted of inflammatory cytokines such as IL-1 family members and CXCL1 (Gro- α), known to be associated with CF [42,43], and inflammatory genes not previously associated with the disease such as IL-32, TNFSF14, LIF and PLAU. IL-32, a cytokine recently described, induces the expression of TNF, IL-1, IL-6 and chemokines [44,45]. LIF, which may act as a pro- or anti-inflammatory cytokine, has an important role in chronic airway inflammation [46] and stimulates the production of chemotactic factors by monocytes [47]. PLAU is involved in inflammation and matrix remodeling with ADAM8 or SERPIN, and might induce gland hyperplasia [48]. We can suppose that the up-regulation of PLAU or associated genes is related to the hyperplasia found in CF airways [49]. Note that a potential secreted virulence factor from *P. aeruginosa* degrades PLAU receptor [50], suggesting that the PLAU pathway is critical in host response to bacterial aggression. The constitutive inflammatory signature observed in CF-TG cells was due to the *cftr* Δ F508 mutation since the transfection of CF-TG cells with a plasmid containing a functional *cftr* gene prevented the up-regulation of inflammatory genes. Our results are consistent with the hypothesis that early pulmonary inflammation is already present before any infection in CF lungs [3,4,51]. They also suggest that the role of tracheal glands is critical in the pathophysiology of CF. First, CF is characterized by altered exocrine glands and it is likely that TG cells express higher levels of CFTR than other bronchial epithelial cells [12]. Second, our results clearly showed that the *cftr* Δ F508 mutation is related to up-regulated expression of inflammatory genes in CF-TG cells. In airway epithelial cells from the trachea or bronchi of CF donors, it has been shown that the *cftr* Δ F508 mutation has a minimal effect on the expression profile of \approx 22,000 genes: only 18 genes were up-regulated. They include nine genes of unknown function and eight genes involved in transcription regulation, adhesion, cytoskeleton/cell communication, ion transport/transport and metabolism. Only one gene, which encodes a novel interleukin receptor, may be included in the inflammatory family [52].

Importantly, we demonstrated that *P. aeruginosa*-secreted products were unable to induce a microbicidal response in CF-TG cells in contrast to wt TG cells. Hence, genes from the IFN- γ pathway (IL-24, CXCL10 and IFN γ R2) and other mediators of innate immune response such as TLR2, S100A8 and S100A9 were not modulated. The lack of IFN- γ signaling due to a mutation in the extracellular domain of IFN γ R2 is associated with susceptibility to mycobacterial infection [53]. CF-TG cells also exhibited defective membrane expression of IFN γ R2 after stimulation with *P.*

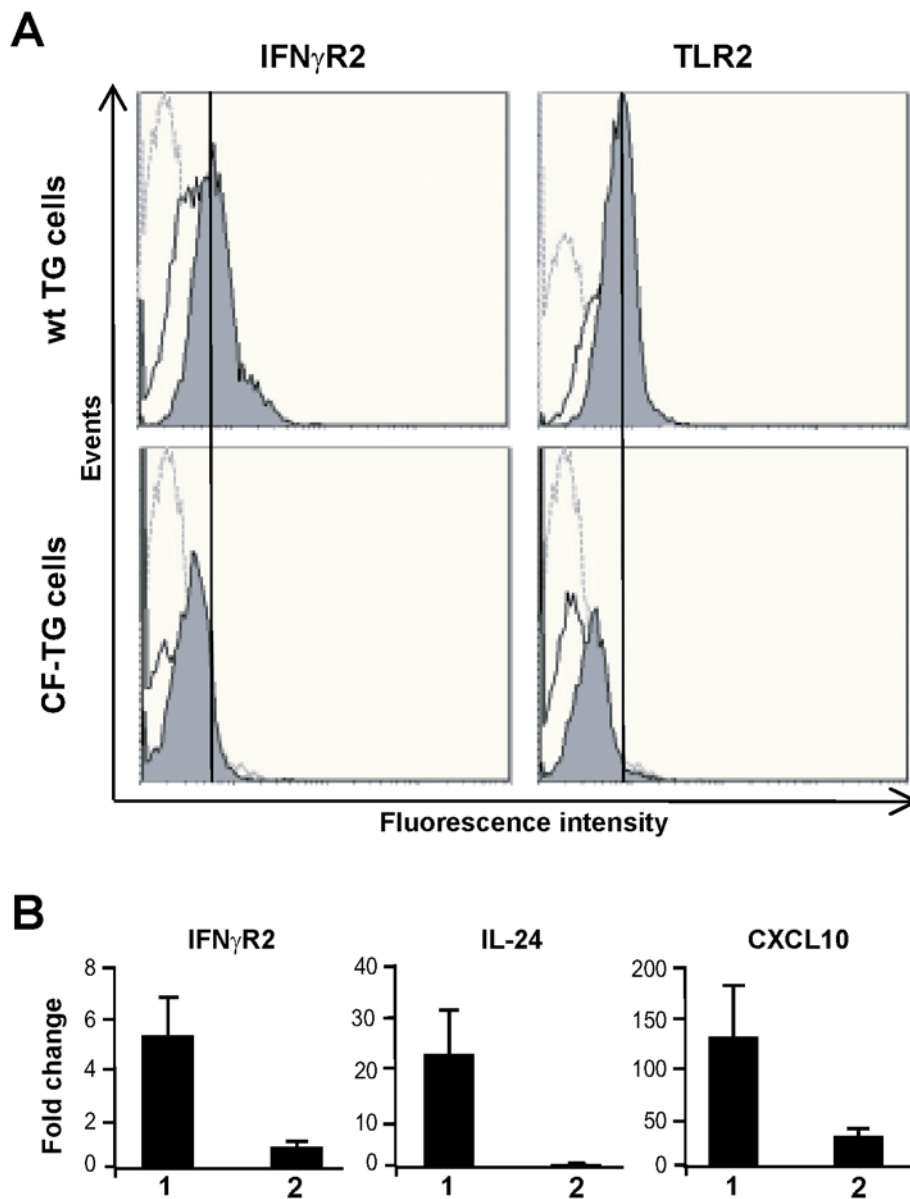


Figure 8. Receptor expression, and effect of IFN γ on gene expression in CF-TG cells. A, wt TG and CF-TG cells were incubated in the absence or presence of *P. aeruginosa*-secreted products for 24 h. The membrane expression of IFN γ R2 and TLR2 was determined by flow cytometry. Histograms are representative of three different experiments. Hatched line, control IgG; Full line, unstimulated cells; Grey color, cells stimulated with *P. aeruginosa*-secreted products. B, 1000 UI of IFN γ were added to wt TG cells (1) and CF-TG cells (2) for 3 h, and the expression of genes encoding IFN γ R2, IL-24 and CXCL10 was studied by qRT-PCR. Results, which represent means \pm SEM of three experiments, are expressed as fold change. (1) IFN γ -treated vs. untreated wt TG cells; (2) IFN γ -treated vs. untreated CF-TG cells. doi:10.1371/journal.pone.0005357.g008

aeruginosa products. Adding IFN γ to CF-TG cells did not stimulate the expression of genes from IFN γ pathway, in contrast to wt TG cells. The defective membrane expression of TLR2 by CF-TG cells may participate to decreased innate immune response. It is likely that the defective expression of TLR2 and the lack of calcium-binding proteins A combined with impaired IFN γ pathway account for the inefficiency of the innate immune response toward *P. aeruginosa* in CF-TG cells. TNFSF14 may also be involved in defective response of CF-TG cells to *P. aeruginosa*-secreted products. Its blockade induces susceptibility of mice to *Leishmania major* through the down-modulation of IL-12 [41], suggesting that TNFSF14 may be a critical factor in the *P. aeruginosa* susceptibility of cells with a *cftr* gene mutation.

The differences in the constitutive inflammatory signature and the microbicidal responses induced by *P. aeruginosa* products between CF-TG cells and wt TG cells may be due to genetic and phenotypic differences since both cell lines have been isolated and established from two different donors. This was unlikely since we found that CF-TG cells exhibited an inflammatory pattern, as previously reported for CF epithelial cells [1,3,4]. Importantly, we clearly showed that the constitutive inflammatory signature of CF-TG cells and the impaired expression of genes involved in microbicidal responses induced by *P. aeruginosa*-secreted products were exclusively dependent on the *cftr* Δ F508 mutation. Indeed, the transfection of CF-TG cells with the *cftr* gene corrected their transcriptional profile toward a profile similar to that of wt TG

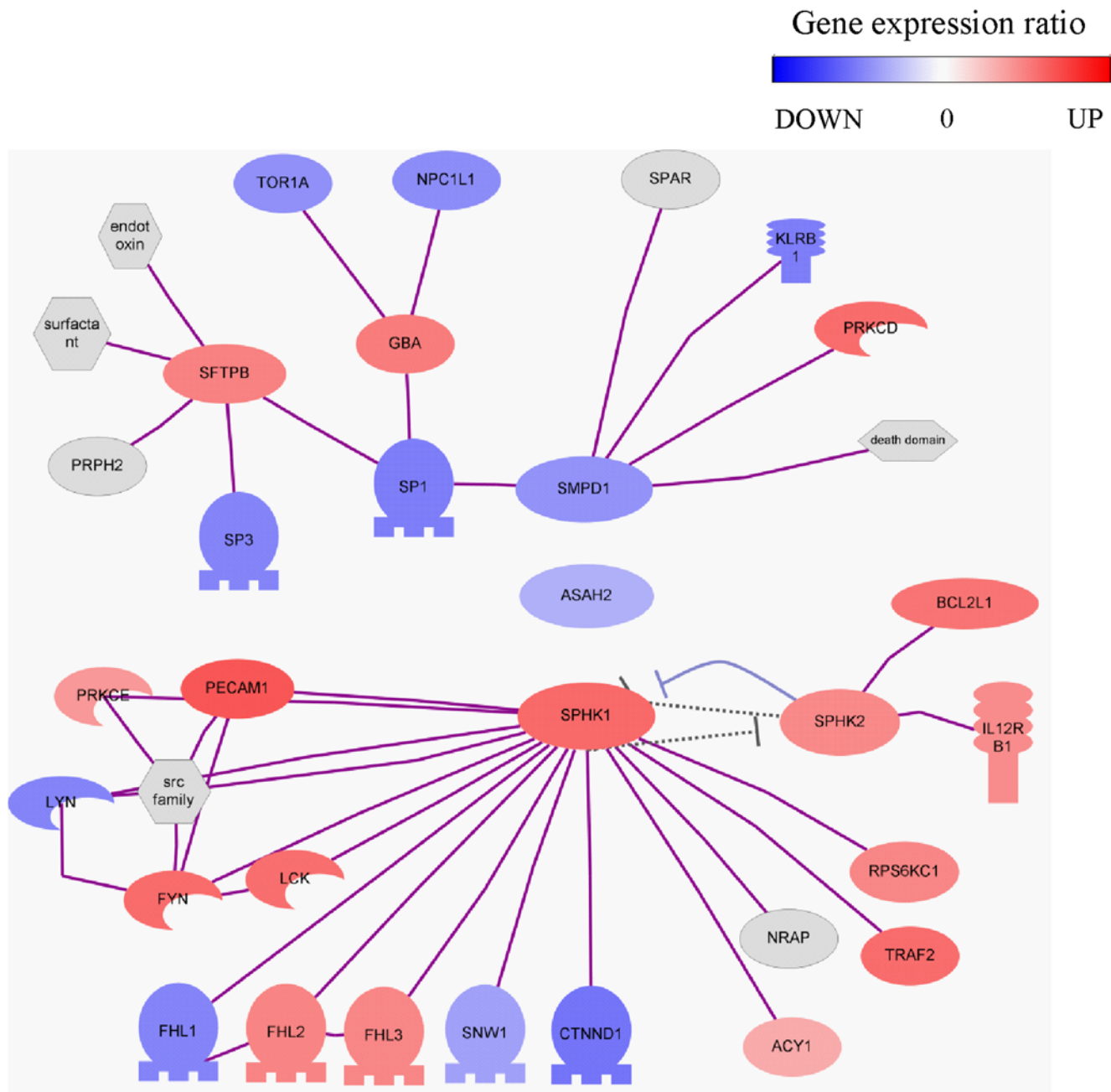


Figure 9. Analysis of genes of the sphingolipid pathway in wt TG and CF-TG cells. Microarray data were collected, and the network of genes encoding enzymes involved in the sphingolipid metabolism and predicted target genes that are significantly modulated was represented. Red color corresponded to up-regulated genes in CF-TG cells compared to wt TG cells and blue color to down-regulated genes.
doi:10.1371/journal.pone.0005357.g009

cells. In a previous study, it has also been shown that the transfer of a functional *cftr* gene to CF-TG cells corrects defective secretory function [54]. These results clearly demonstrated that both inflammatory and non-microbicidal signatures of CF-TG cells were related to the expression of the *cftr* gene.

Finally, it has been recently demonstrated in *cftr*-deficient mice that sphingolipids are involved in CF pathogenesis through altered pH of intracellular vesicles [25]. We showed here that sphingolipid metabolism was altered in human CF-TG cells. Indeed, the analysis of microarray data showed that ceramidase and numerous related genes were down-modulated whereas sphingosine kinase and other related genes were up-regulated in CF-TG cells

compared to wt TG cells. Ceramide is critical in sphingolipid metabolism. It is generated from sphingomyelin by the action of acid sphingomyelinase or *de novo* synthesis through the ceramide synthase. It may be transformed into sphingosine, ceramide-1-phosphate, glucosylceramide by different enzymes, and sphingomyelin in the Golgi apparatus. Ceramide may also be glycosylated in galactosyl-ceramide by a galactosyl-ceramide synthase that transfers galactose from a UDP-galactose donor [55]. We showed that galactosyl-ceramide accumulated in CF-TG cells compared to wt TG cells whereas the ceramide levels were similar in wt TG and CF-TG cells. Note that bacteria such as *Escherichia coli* [56] and *Helicobacter pylori* [57] selectively interact with galactosyl-ceramide,

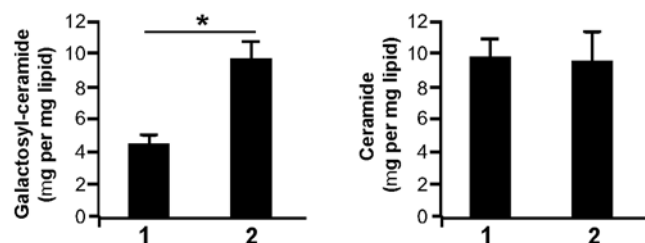


Figure 10. Ceramide levels in wt TG cells and CF-TG cells. Total lipids were extracted from wt TG cells (1) and CF-TG cells (2), and separated by one-dimensional thin-layer chromatography. Galactosyl-ceramides and ceramides were quantified by scanning using standard calibration curves (r2). The results, which represent means \pm SEM of 5 determinations, are expressed in μ g galactosyl-ceramide (A) or ceramide (B) per mg of total lipids. * p <0.05. doi:10.1371/journal.pone.0005357.g010

suggesting that increased levels of galactosyl-ceramide may favor the binding of *P. aeruginosa* to CF-TG cells. In *cflr*-deficient mice, ceramide accumulation is observed in the respiratory tract epithelium and submucosa [25]. The apparent discrepancies between our results and those of Teichgräber *et al.* [25] may be explained by the different methods of ceramide determination, the complex regulation of the ceramide pathway and the different cell types. Hence, alveolar epithelial cells of *cflr*-deficient mice do not accumulate ceramide [25]. Defective acidification of organelles in CF cell types may alter sphingolipid metabolism and, as a consequence, the expression of proinflammatory cytokines [25]. We reasoned that pH neutralization of vesicles may increase the expression of inflammatory genes in wt TG cells. For that purpose, we used bafilomycin A1, a specific inhibitor of V-ATPase involved in vesicle acidification and chloroquine, a weak base that diminishes CpG signaling by neutralizing endosomal pH [58]. The genes that encode the seven cytokines of the inflammatory signature of CF-TG cells were up-regulated in wt TG cells treated by alkalinizing agents compared to untreated wt TG cells. This result extended the observation that defective CFTR leads to defective acidification of intracellular organelles [25,59]. It also demonstrated a functional link between pH rise and inflammatory cytokines independently of CF.

In conclusion, our study represents the first comprehensive analysis of gene expression in TG cells. It reveals an original program consisting of a constitutive and moderate inflammatory state of CF-TG cells likely due to altered sphingolipid metabolism. Defective microbicidal responses to *P. aeruginosa* of CF-TG cells were related, at least in part, to defective IFN- γ pathway. The inflammatory signature and the defective microbicidal signature of CF-TG cells were corrected when CF-TG cells were transfected with a functional *cflr* gene. They may be sufficient to account for host inefficiency in struggle against *P. aeruginosa* in cystic fibrosis. The candidate genes non-previously reported may serve as targets for new therapeutic approaches.

Materials and Methods

P. aeruginosa

The strain used in this study was isolated from a CF patient with a *cflr* Δ F508/ Δ F508 genotype associated with an exocrine pancreatic insufficiency. It was the first isolated strain in sputum from this CF patient who was 16.2 years old at the time of collection. The strain belongs to the clone A lineage and has functional type IVa and flagellum tested by twitching and swimming mobility, respectively (data not shown). Single colonies

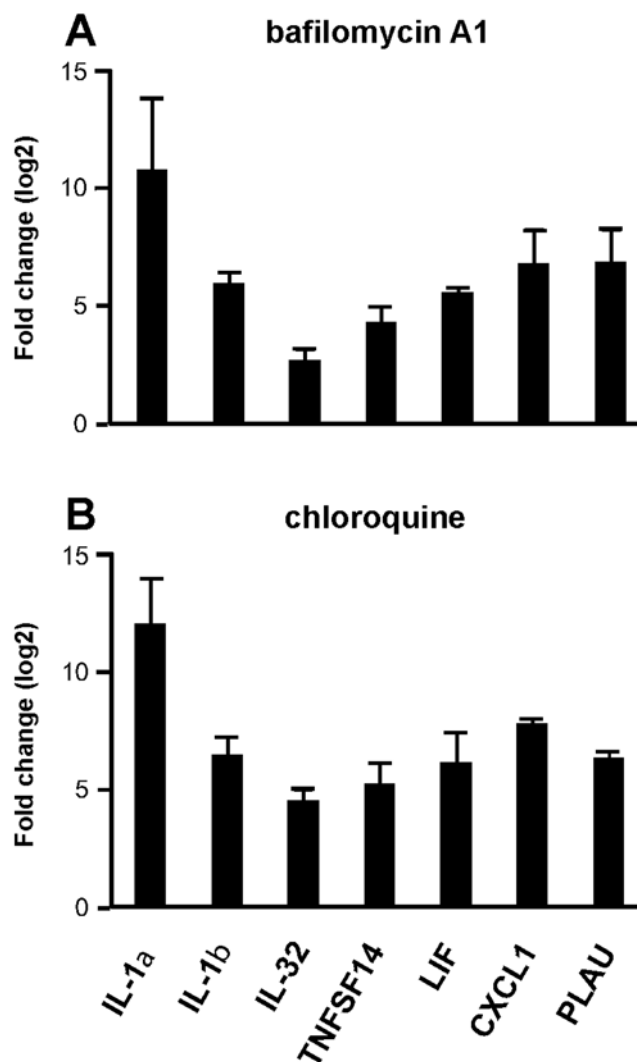


Figure 11. Role of alkalization on the inflammatory signature of wt TG cells. Wild type TG cells were treated with 300 nM bafilomycin A1 (A) or 200 μ M chloroquine (B) for 3 h. The expression levels of the seven genes involved in the inflammatory signature of CF-TG cells were studied by qRT-PCR. Results are expressed as the log2 ratio of the fold change observed in the presence of alkalization agent vs. its absence. They represent the means \pm SEM of three experiments. doi:10.1371/journal.pone.0005357.g011

isolated from CF and PAO1 reference [60] strains were grown in LB to a stationary phase at 37°C for 18 h. Bacterial suspensions (2×10^9 cfu/ml) were centrifuged at 3,000 \times g for 15 min, and supernatant from the CF strain was further filtered through 0.2 μ m filters and used to stimulate TG cells. Filtered LB was used as negative control.

Analysis of *P. aeruginosa* products

P. aeruginosa-secreted products were submitted to tetraacetic acid precipitation for electrophoretic analysis and protein content determination. An equivalent of 0.025 OD₆₀₀ units/ μ l was added to SDS-PAGE loading buffer. The samples were boiled for 10 min and the proteins separated by electrophoresis on a 12% polyacrylamide gel. The proteins were stained with Coomassie blue, cut out, subjected to procedures routinely performed in the proteomic platform at the IBSM (<http://www.ibsm.cnrs-mrs.fr/ifrc/servtech/seq>) and analyzed by mass spectrometry. Briefly,

samples were treated via reduction and alkylation processes, digested with trypsin, desalted and subjected to mass spectrometry analysis using MALDI-TOF. Internal scale up was done with ions coming from trypsin autolysis and keratin. Mass values were compared with theoretical values from peptides referenced in databases.

Cell culture

The serous tracheal gland cell lines MM39 (TG cells) and CF-KM4 (CF-TG cells) were isolated from a healthy donor [20] and a CF patient with a *cftr* $\Delta F508/\Delta F508$ mutation [19], respectively. Cell cultures were carried out as previously described [20,61]. In brief, cells were maintained in Dulbecco's modified Eagle's/Ham's F12 medium (Sigma Chemicals) supplemented with 0.1% Ultrosor G (Biosepra), 5% adult bovine serum, 5 g/l D-glucose and 0.1 g/l pyruvate. The absence of mycoplasma in cell cultures was checked using the VenorGeM kit (Biovalley). In some experiments, CF-TG cells were transfected with the pcDNA₃-CFTR plasmid (Transgène, Strasbourg, France) or with the pM1-LUC plasmid (Roche Molecular Biology) as a negative control using the Lipofectamine Reagent (Invitrogen) as previously described [54]. Cells plated in 12-well tissue culture dishes (Falcon) were stimulated with *P. aeruginosa*-secreted products (1:10 dilution) for 3 h for transcriptional studies, as described elsewhere [62], or 24 h for functional studies. In some experiments, 1000 UI of human recombinant IFN γ (Peprotech) were added to wt TG and CF-TG cells for 3 h before transcriptional analyses by real-time quantitative RT-PCR (qRT-PCR) (see below). The alkalization of intracellular organelles was performed as previously described [58]. Wild type TG cells were incubated with different concentrations of baflomycin A1 or chloroquine (Sigma) for 3 h, and the expression of inflammatory genes was studied by qRT-PCR.

Microarrays and data analysis

Total RNA was extracted using the RNeasy minikit (Qiagen) and DNase treatment. The quality and the quantity of RNA preparation were assessed using the 2100 Bioanalyzer and the RNA 6000 Nano LabChip kit (Agilent Technologies). The 4 \times 44 k Human Whole Genome microarrays (Agilent Technologies) representing 33,581 genes or transcripts were used. Sample labeling and hybridization were performed according to protocols specified by the manufacturer (One-Color Microarray-Based Gene Expression Analysis). Briefly, 300 ng of total RNA and cyanine 3-labeled CTP (Cy-3) fluorescent dyes were used to generate fluorescent cRNA with Low RNA Input Fluorescent Amplification Kit (Agilent Technologies). Hybridization was performed for 17 h at 65°C using the *In situ* Hybridization Kit Plus (Agilent Technologies). All processing steps were performed in an ozone-controlled environment ([O₃] <2 ppb). Twelve samples with three samples per cell group were included in the analysis. Slides were scanned at a 5 μ m resolution with a G2505B DNA microarray scanner (Agilent Technologies). Image analysis and intra-array signal correction were performed using Agilent Feature Extractor Software A.9.1.3. Data processing, analysis and visualizing were performed using the Resolver software 7.1 (Rosetta Inpharmatics). Its error model-based transformation pipeline was used to map replicate reporters to genes and perform inter-array normalization. The intensity error model and its applications were used as described elsewhere [63]. The same procedure was used to discriminate the genes differentially expressed by two data groups (CF-TG cells *vs.* wt TG cells; wt TG stimulated cells *vs.* wt TG cells, CF-TG stimulated cells *vs.* CF-TG cells). Data were pre-processed by selecting only the best known genes (21,236) and then applying filters on gene expression

level and variation among samples. Thus, a gene was kept for further analysis when the *P*-value of the error model was below 0.01 in at least 3 of the 6 samples and its coefficient of variation among samples was over 0.2. Discrimination between samples was performed using the unpaired Student's *t* test, the fold change (FC) and its associated *P*-value obtained with the Resolver error-model. A gene was considered as differentially expressed between two groups whether it met both criteria: a *P*-value for 2-sided Student's *t* test below 0.01 and an absolute |FC| >1.5 with a confidence *P*-value below 0.01. All data are MIAME compliant (accession no. A-MEXP-1332; www.ebi.ac.uk/miamexpress) [64]. Results were expressed as FC in fluorescence intensities between two groups, and expressed in log₂. Gene families were determined using numerous databases: DAVID Bioinformatics Resources 2008 (<http://david.abcc.ncifcrf.gov/>), Online Medelian Inheritance in Man (<http://www.ncbi.nlm.nih.gov/sites/entrez?db=OMIM&TabCmd=Limits>), SOURCE (<http://smd.stanford.edu/cgi-bin/source/sourceSearch>), and Babelomics Fatigo+ (<http://babelomics2.bioinfo.cipf.es/fatigoplus/cgi-bin/fatigoplus.cgi>). The genes involved in the sphingolipid metabolism were studied using a construction that connected the 25 entities belonging to the sphingolipid-metabolism-process Gene Ontology group. Regulatory (dashed grey arrow) and physical (plain purple line) interactions between entities was based on information extracted from the literature using PathwayStudio™ (AriadneGenomics). Data from microarray experiments were collected and red color corresponded to up-regulated genes in CF-TG cells compared to wt TG cells and blue color to down-regulated genes.

qRT-PCR

Reverse transcription of total RNA was performed according to the manufacturer's protocol (Invitrogen). Forward and reverse primers were constructed according to published sequences, and design was optimized for the LightCycler 480 System (Roche Diagnostics) (see Table S7 for primer sequences). qRT-PCR was performed using the LightCycler 480 SYBR Green I Master kit. Temperature cycling proceeded as follows: 5 min at 95°C to activate the FastStart Taq DNA Polymerase, followed by 45 cycles each consisting of: 15 s at 95°C for denaturation, followed by 30 s at 60°C for primer annealing and 30 s at 72°C for elongation. Melting curve analyses were performed by increasing the temperature from 70°C to 95°C. A standard curve for each primer was performed to determine the amplification efficiency. Relative quantification was calculated from the C_p values of the targeted gene and the reference gene using the LightCycler 480 software analysis (Roche Diagnostics). The mean ratio was calculated from triplicate assays. Each experiment was performed three times. Results were expressed as FC between two groups.

Flow cytometry

Cells (5 \times 10⁵ cells in 100 μ l of phosphate buffered saline (PBS) containing 10% foetal calf serum and 1% sodium azide) were incubated with 10 μ l of FITC-conjugated TLR2 (eBioscience) antibodies (Abs) for 1 h at 4°C or with 10 μ l of IFN γ R2 Abs (Santa Cruz) for 1 h followed by an incubation with 5 μ l of swine anti-human IgG-FITC Abs (R&D Systems) for 30 min at 4°C. After washing, cells were analyzed by flow cytometry (EPICS XL, Beckman Coulter). Fluorescence was determined on all cells for each sample after debris, dead cells, and aggregates were excluded by selective gating based on orthogonal and side light scatter characteristics. Mean fluorescence intensity (MFI) was compared with control staining using an irrelevant isotype-matched human monoclonal antibody. For each sample, at least ten thousand events were collected and histograms were generated per sample.

The percentage of positive cells was determined using the Expo32 ADC and the WinMDI 2.8 software. Each experiment was performed three times and a representative histogram is shown.

ELISA

Cells (2×10^6 cells) were stimulated with *P. aeruginosa*-secreted products for 24 h, centrifuged and supernatants were stored at -80°C before assays. The enzyme-linked immunosorbent assays (ELISA) were provided from Beckman Coulter for IL-1 α , R&D Systems for IL-1 β , IL-24 and TNFSF14, RayBiotech for LIF and CXCL10, Preprotech for CXCL1, and Hycult Biotechnology for S100A8/S100A9. The assays were performed according to the manufacturer's instructions. The detection limit of the kits was less than 1.6 ng/ml for S100A8/S100A9, 15 pg/ml for IL-1 α , LIF and IL-24, 10 pg/ml for CXCL1, 8 pg/ml for CXCL10, 5.5 pg/ml for TNFSF14, and 0.023 pg/ml for IL-1 β . The mean ratio was calculated from triplicate assays. Each experiment was performed three times.

Sphingolipid metabolism

Pelleted cells (2×10^7 cells per assay) were suspended in 1 ml of water, and lipids were extracted by 20 ml of chloroform/methanol (2:1 volume), as already described [65]. After evaporation of the lipid phase under nitrogen, lipids were separated by four-stage, one-dimensional thin-layer chromatography (TLC) using 20×20 cm TLC Silica Gel G60 analytical plates (Merck), according to Augé et al. [66]. For staining, plates were dipped in 10% copper sulfate/8% phosphoric acid solution [64]. The plates were drained and heated at 130°C for 1 h. Several standard calibration curves were constructed with 0.5–50 μg of pure sphingolipid species (sphingomyelin, ceramides, galactocerebrosides, glucocerebrosides, lactocerebrosides, 1- β -D galactosylsphingosine) all species provided from Sigma. Ceramides and galactosylceramides were quantified by densitometry after scanning the plates and using the software package Bio-1D⁺⁺ (Vilber Lourmat).

Statistical analysis

Results are expressed as means \pm SEM and [95% CI] and compared with the non-parametric Mann-Whitney *U* test. Statistical significance of qRT-PCR data was determined using the Student's *t* test. Differences were considered significant when $P < 0.05$.

References

- Lyczak JB, Cannon CL, Pier GB (2002) Lung infections associated with cystic fibrosis. *Clin Microbiol Rev* 15: 194–222.
- Chow CW, Landau LI, Taussig LM (1982) Bronchial mucous glands in the newborn with cystic fibrosis. *Eur J Pediatr* 139: 240–243.
- Verhaeghe C, Delbecq K, de Leval L, Oury C, Bours V (2007) Early inflammation in the airways of a cystic fibrosis foetus. *J Cyst Fibros* 6: 304–348.
- Wagener JS, Kahn TZ, Copenhaver SC, Accurso FJ (1997) Early inflammation and the development of pulmonary disease in cystic fibrosis. *Pediatr Pulmonol Suppl* 16: 267–268.
- Bonfield TL, Konstan MW, Berger M (1999) Altered respiratory epithelial cell cytokine production in cystic fibrosis. *J Allergy Clin Immunol* 104: 72–78.
- Kammouni W, Figarella C, Marchand S, Merten M (1997) Altered cytokine production by cystic fibrosis tracheal gland serous cells. *Infect Immun* 65: 5176–5183.
- Venkatakrishnan A, Stecenko AA, King G, Blackwell TR, Brigham KL, et al. (2000) Exaggerated activation of nuclear factor- κB and altered $\text{I}\kappa\text{B}\beta$ processing in cystic fibrosis bronchial epithelial cells. *Am J Respir Cell Mol Biol* 23: 396–403.
- Al-Aloul M, Crawley J, Winstanley C, Hart CA, Ledson MJ, et al. (2004) Increased morbidity associated with chronic infection by an epidemic *Pseudomonas aeruginosa* strain in CF patients. *Thorax* 59: 334–336.
- Hart CA, Winstanley C (2002) Persistent and aggressive bacteria in the lungs of cystic fibrosis children. *Br Med Bull* 61: 81–96.
- Kreda SM, Mall M, Mengos A, Rochelle L, Yankaskas J, et al. (2005) Characterization of wild-type and ΔF508 cystic fibrosis transmembrane regulator in human respiratory epithelia. *Mol Biol Cell* 16: 2154–2167.

Supporting Information

Table S1 Functional classification of up-regulated genes in CF-TG cells

Found at: doi:10.1371/journal.pone.0005357.s001 (0.11 MB DOC)

Table S2 Functional classification of down-regulated genes in CF-TG cells

Found at: doi:10.1371/journal.pone.0005357.s002 (0.12 MB DOC)

Table S3 Functional classification of up-regulated genes in *P. aeruginosa*-stimulated TG cells

Found at: doi:10.1371/journal.pone.0005357.s003 (0.12 MB DOC)

Table S4 Functional classification of down-regulated genes in *P. aeruginosa*-stimulated TG cells

Found at: doi:10.1371/journal.pone.0005357.s004 (0.07 MB DOC)

Table S5 Functional classification of up-regulated genes in *P. aeruginosa*-stimulated CF-TG cells

Found at: doi:10.1371/journal.pone.0005357.s005 (0.11 MB DOC)

Table S6 Functional classification of down-regulated genes in *P. aeruginosa*-stimulated CF-TG cells

Found at: doi:10.1371/journal.pone.0005357.s006 (0.07 MB DOC)

Table S7 Primers used for qRT-PCR

Found at: doi:10.1371/journal.pone.0005357.s007 (0.04 MB DOC)

Acknowledgments

We thank Dr. Marc Merten for his gift of TG cells and Pr. Pascal Chanez for fruitful discussion and reading the manuscript.

Author Contributions

Conceived and designed the experiments: JLM. Performed the experiments: SB MA. Analyzed the data: YLP. Contributed reagents/materials/analysis tools: CSB MRG DO DP SdB. Wrote the paper: CC JLM.

20. Merten MD, Kammouni W, Renaud W, Birg F, Mattei MG, et al. (1996) A transformed human tracheal gland cell line, MM-39, that retains serous secretory functions. *Am J Respir Cell Mol Biol* 15: 520–528.
21. Seo J, Brencic A, Darwin AJ (2008) Analysis of secretin-induced stress in *Pseudomonas aeruginosa* suggests prevention rather than response and identifies a novel protein involved in secretin function. *J Bacteriol*, in press.
22. Mougous JD, Cuff ME, Raunser S, Shen A, Zhou M, et al. (2006) A virulence locus of *Pseudomonas aeruginosa* encodes a protein secretion apparatus. *Science* 312: 1526–1530.
23. Zaborina O, Holbrook C, Chen Y, Long J, Zaborina A, et al. (2008) Structure-function aspects of PstS in multi-drug-resistant *Pseudomonas aeruginosa*. *PLoS Pathog* 4: e43.
24. Nacken W, Roth J, Sorg C, Kerkhoff C (2003) S100A9/S100A8: Myeloid representatives of the S100 protein family as prominent players in innate immunity. *Microsc Res Tech* 60: 569–580.
25. Teichgräber V, Ulrich M, Endlich N, Riethmüller J, Wilker B, et al. (2008) Ceramide accumulation mediates inflammation, cell death and infection susceptibility in cystic fibrosis. *Nature Med* 14: 382–391.
26. Beck DC, Ikegami M, Na CL, Zaltash S, Johansson J, et al. (2000) The role of homodimers in surfactant protein B function in vivo. *J Biol Chem* 275: 3365–3370.
27. Ulrich M, Herbert S, Berger J, Bellon G, Louis D, et al. (1998) Localization of *Staphylococcus aureus* in infected airways of patients with cystic fibrosis and in a cell culture model of *S. aureus* adherence. *Am J Respir Cell Mol Biol* 19: 83–91.
28. Worlitzsch D, Tarran R, Ulrich M, Schwab U, Cekici A, et al. (2002) Effects of reduced mucus oxygen concentration in airway *Pseudomonas* infections of cystic fibrosis patients. *J Clin Invest* 109: 317–325.
29. Inoue D, Yamaya M, Kubo H, Sasaki T, Hosoda M, et al. (2006) Mechanisms of mucin production by rhinovirus infection in cultured human epithelial cells. *Respir Physiol Neurobiol* 154: 484–499.
30. Luster AD, Ravetch JV (1987) Genomic characterization of a γ -interferon-inducible gene (IP-10) and identification of an interferon-inducible hypersensitive site. *Mol Cell Biol* 7: 3723–3731.
31. Caudell EG, Mumm JB, Poindexter N, Ekmekcioglu S, Mhashilkar AM, et al. (2002) The protein product of the tumor suppressor gene, melanoma differentiation-associated gene 7, exhibits immunostimulatory activity and is designated IL-24. *J Immunol* 168: 6041–6046.
32. Elson G, Dunn-Siegrist I, Daubeuf B, Pugin J (2007) Contribution of Toll-like receptors to the innate immune response to Gram-negative and Gram-positive bacteria. *Blood* 109: 1574–1583.
33. Chun J, Prince A (2006) Activation of Ca^{2+} -dependent signaling by TLR2. *J Immunol* 177: 1330–1337.
34. Donato R (2003) Intracellular and extracellular roles of S100 proteins. *Microsc Res Tech* 60: 540–551.
35. Vos JB, van Sterkenburg MA, Rabe KF, Schalkwijk J, Hiemstra PS, et al. (2005) Transcriptional response of bronchial epithelial cells to *Pseudomonas aeruginosa*: identification of early mediators of host defense. *Physiol Genomics* 21: 324–336.
36. Vogl T, Tenbrock K, Ludwig S, Leukert N, Ehrhardt C, et al. (2007) Mrp8 and Mrp14 are endogenous activators of Toll-like receptor 4, promoting lethal, endotoxin-induced shock. *Nat Med* 13: 1042–1049.
37. Boniface K, Bernard FX, Garcia M, Gurney AL, Lecron JC, et al. (2005) IL-22 inhibits epidermal differentiation and induces proinflammatory gene expression and migration of human keratinocytes. *J Immunol* 174: 3695–3702.
38. Schneider K, Potter KG, Ware CF (2004) Lymphotoxin and LIGHT signaling pathways and target genes. *Immunol Rev* 202: 49–66.
39. Pollara G, Katz DR, Chain BM (2005) LIGHTing up dendritic cell activation: Immune regulation and viral exploitation. *J Cell Physiol* 205: 161–162.
40. Brown GR, Lee EL, El-Hayek J, Kintner K, Luck C (2005) IL-12-independent LIGHT signaling enhances MHC class II disparate CD4^{+} T cell alloproliferation, IFN- γ responses, and intestinal graft-versus-host disease. *J Immunol* 174: 4688–4695.
41. Xu G, Liu D, Okwor I, Wang Y, Komer H, et al. (2007) LIGHT is critical for IL-12 production by dendritic cells, optimal CD4^{+} Th1 cell response, and resistance to *Leishmania major*. *J Immunol* 179: 6901–6909.
42. Dinarello CA (2004) Therapeutic strategies to reduce IL-1 activity in treating local and systemic inflammation. *Curr Opin Pharmacol* 4: 378–385.
43. Verhaeghe C, Remouchamps C, Hennuy B, Vanderplassen A, Chariot A, et al. (2007) Role of IKK and ERK pathways in intrinsic inflammation of cystic fibrosis airways. *Biochem Pharmacol* 73: 1982–1994.
44. Kim SH, Han SY, Azam T, Yoon DY, Dinarello CA (2005) Interleukin-32: a cytokine and inducer of TNF α . *Immunity* 22: 131–142.
45. Netea MG, Azam T, Ferwerda G, Girardin SE, Walsh M, et al. (2005) IL-32 synergizes with nucleotide oligomerization domain (NOD) 1 and NOD2 ligands for IL-1 β and IL-6 production through a caspase 1-dependent mechanism. *Proc Natl Acad Sci U S A* 102: 16309–16314.
46. Knight D (2001) Leukaemia inhibitory factor (LIF): a cytokine of emerging importance in chronic airway inflammation. *Pulm Pharmacol Ther* 14: 169–176.
47. Musso T, Badolato R, Longo DL, Gusella GL, Varesio L (1995) Leukemia inhibitory factor induces interleukin-8 and monocyte chemotactic and activating factor in human monocytes: differential regulation by interferon- γ . *Blood* 86: 1961–1967.
48. Filali M, Liu X, Cheng N, Abbott D, Leontiev V, et al. (2002) Mechanisms of submucosal gland morphogenesis in the airway. *Novartis Found Symp* 248: 38–45; discussion 45–50, 277–282.
49. Inglis SK, Wilson SM (2005) Cystic fibrosis and airway submucosal glands. *Pediatr Pulmonol* 40: 279–284.
50. Leduc D, Beaufort N, de Bentzmann S, Rousselle JC, Namane A, et al. (2007) The *Pseudomonas aeruginosa* LasB metalloproteinase regulates the human urokinase-type plasminogen activator receptor through domain-specific endoproteolysis. *Infect Immun* 75: 3848–3858.
51. Tirouvanziam R, de Bentzmann S, Hubeau C, Hinrasky J, Jacquot J, et al. (2000) Inflammation and infection in naive human cystic fibrosis airway grafts. *Am J Respir Cell Mol Biol* 23: 121–127.
52. Zabner J, Scheetz TE, Almabrazi HG, Casavant TL, Huang J, et al. (2005) CFTR ΔF508 mutation has minimal effect on the gene expression profile of differentiated human airway epithelia. *Am J Physiol Lung Cell Mol Physiol* 289: L545–553.
53. Dorman SE, Holland SM (1998) Mutation in the signal-transducing chain of the interferon- γ receptor and susceptibility to mycobacterial infection. *J Clin Invest* 101: 2364–2369.
54. Bastonero S, Gargouri M, Ortiou S, Gueant JL, Merten MD (2005) Inhibition by TNF- α and IL-4 of cationic lipid mediated gene transfer in cystic fibrosis tracheal gland cells. *J Gene Med* 7: 1439–1449.
55. Lahiri S, Futerman AH (2007) The metabolism and function of sphingolipids and glycosphingolipids. *Cell Mol Life Sci* 64: 2270–2284.
56. Bäckhed F, Alsnén B, Roche N, Angström J, von Euler A, et al. (2002) Identification of target tissue glycosphingolipid receptors for uropathogenic, F1C-fimbriated *Escherichia coli* and its role in mucosal inflammation. *J Biol Chem* 277: 18198–18205.
57. Abul-Mihl M, Barnett-Foster D, Lingwood CA (2001) In vitro binding of *Helicobacter pylori* to monohehexosylceramides. *Glycoconj J* 18: 253–260.
58. Ghigo E, Capo C, Aurouze M, Tung CH, Gorvel JP, et al. (2002) Survival of *Tropheryma whipplei*, the agent of Whipple's disease, requires phagosomal acidification. *Infect Immun* 70: 1501–1506.
59. Di A, Brown ME, Deriy LV, Li C, Szeto FL, et al. (2006) CFTR regulates phagosomal acidification in macrophages and alters bactericidal activity. *Nat Cell Biol* 8: 933–944.
60. Stover CK, Pham XQ, Erwin AL, Mizoguchi SD, Warrenner P, et al. (2000) Complete genome sequence of *Pseudomonas aeruginosa* PA01, an opportunistic pathogen. *Nature* 406: 959–964.
61. Merten MD (1996) Human tracheal gland cells in primary culture. In: Jones G, ed. *Human cell culture protocols*. London: Humana Press. pp 201–216.
62. Coraux C, Kilezky C, Polette M, Hinrasky J, Zahm JM, et al. (2004) Airway epithelial integrity is protected by a long-acting β 2-adrenergic receptor agonist. *Am J Respir Cell Mol Biol* 30: 605–612.
63. Weng L, Dai H, Zhan Y, He Y, Stepaniants SB, et al. (2006) Rosetta error model for gene expression analysis. *Bioinformatics* 22: 1111–1121.
64. Brazma A, Hingamp P, Quackenbush J, Sherlock G, Spellman P, et al. (2001) Minimum information about a microarray experiment (MIAME)-toward standards for microarray data. *Nat Genet* 29: 365–371.
65. Armand M, Borel P, Pasquier B, Dubois C, Senft M, et al. (1996) Physicochemical characteristics of emulsions during fat digestion in human stomach and duodenum. *Am J Physiol* 271: G172–G183.
66. Augé N, Andrieu N, Nègre-Salvayre A, Thiers JC, Levade T, et al. (1996) The sphingomyelin-ceramide pathway is involved in oxidized low density lipoprotein-induced cell proliferation. *J Biol Chem* 271: 19251–19255.