



High Heterogeneity of Multidrug-Resistant Enterobacteriaceae Fecal Levels in Hospitalized Patients Is Partially Driven by Intravenous β -Lactams

Ana Djukovic, Eva González-Barberá, Jaime Sanz, Alejandro Artacho, Iván Peñaranda, Beatriz Herrera, María José Garzón, Miguel Salavert, José Luis López-Hontangas, Karina Xavier, et al.

► To cite this version:

Ana Djukovic, Eva González-Barberá, Jaime Sanz, Alejandro Artacho, Iván Peñaranda, et al.. High Heterogeneity of Multidrug-Resistant Enterobacteriaceae Fecal Levels in Hospitalized Patients Is Partially Driven by Intravenous β -Lactams. *Antimicrobial Agents and Chemotherapy*, 2020, 64 (2), 33 p. 10.1128/AAC.01415-19 . hal-02465857

HAL Id: hal-02465857

<https://amu.hal.science/hal-02465857>

Submitted on 26 May 2020

HAL is a multi-disciplinary open access archive for the deposit and dissemination of scientific research documents, whether they are published or not. The documents may come from teaching and research institutions in France or abroad, or from public or private research centers.

L'archive ouverte pluridisciplinaire **HAL**, est destinée au dépôt et à la diffusion de documents scientifiques de niveau recherche, publiés ou non, émanant des établissements d'enseignement et de recherche français ou étrangers, des laboratoires publics ou privés.

1 **High heterogeneity of multidrug-resistant Enterobacteriaceae fecal levels in**
2 **hospitalized patients is partially driven by intravenous beta-lactams.**

3

4 Ana Djukovic¹, Eva M. González-Barberá^{2,&}, Jaime Sanz^{2,3,&}, Alejandro Artacho¹, Iván
5 Peñaranda¹, Beatriz Herrera¹, María Jose Garzón¹, Miguel Salavert², Jose Luis López-
6 Hontangas², Karina B. Xavier⁴, Bernhard Kuster⁵, Laurent Debrauwer⁶, Jean-Marc Rolain⁷,
7 Miguel Sanz^{2,3}, Joao Xavier^{8,9}, Carles Ubeda^{1,10,*}.

8

9 ¹Centro Superior de Investigación en Salud Pública - FISABIO, Valencia, Spain.

10 ² Hospital Universitari i Politècnic La Fe, Valencia, Spain.

11 ³ CIBERONC, Instituto Carlos III, Madrid, Spain

12 ⁴ Instituto Gulbenkian de Ciência, Oeiras, Portugal.

13 ⁵ Chair of Proteomics and Bioanalytics, Technical University of Munich, Friesing, Germany.

14 ⁶ Toxalim, Université de Toulouse, INRA, INP-ENVT, INP-EI-Purpan, Université de
15 Toulouse 3 Paul Sabatier, F-31027 Toulouse, France; Axiom Platform, UMR 1331 Toxalim,
16 MetaToul-MetaboHUB, National Infrastructure of Metabolomics and Fluxomics, F-31027
17 Toulouse, France

18 ⁷ Aix Marseille Univ, IRD, APhM, MEPHI, IHU-Méditerranée Infection, Marseille, France.

19 ⁸ Lucille Castori Center for Microbes, Inflammation and Cancer, Memorial Sloan Kettering
20 Cancer Center, New York, New York 10065, USA.

21 ⁹ Computational Biology Program, Sloan-Kettering Institute, New York, New York 10065,
22 USA.

23 ¹⁰ Centers of Biomedical Research Network (CIBER) in Epidemiology and Public Health,
24 Madrid, Spain

25

26 [&]Equal contribution

27

28 *Corresponding author:
29 Carles Ubeda
30 Avenida de Cataluña, 21.
31 46020 Valencia. Spain.
32 Phone: 01134961925973
33 Fax: 01134961925703
34 ubeda_carmor@gva.es

35
36 Short Running title
37 IV beta-lactams impact MRE fecal levels

38
39
40
41
42
43
44
45
46
47
48
49
50
51
52
53
54

55 **ABSTRACT**

56 Multidrug-resistant Enterobacteriaceae (MRE) colonize the intestine asymptotically
57 from where they can breach into the bloodstream and cause life-threatening infections,
58 especially in heavily colonized patients. Despite the clinical relevance of MRE colonization
59 levels, we know little about how they vary in hospitalized patients and the clinical factors
60 that determine those levels. Here we conducted one of the largest studies of MRE fecal
61 levels by tracking longitudinally 133 acute leukemia patients and monitoring their MRE
62 levels over time through extensive culturing. MRE were defined as Enterobacteriaceae
63 species that acquired non-susceptibility to ≥ 1 agent in ≥ 3 antimicrobial categories. In
64 addition, due to the selective media used, the MRE had to be resistant to third-generation
65 cephalosporins. MRE were detected in 60% of the patients, but their fecal levels varied
66 considerably among patients and within the same patient (>6 and 4 orders of magnitude,
67 respectively). Multivariate analysis of clinical metadata revealed an impact of intravenous
68 beta-lactams (i.e. meropenem and piperacillin-tazobactam), which significantly
69 diminished the fecal MRE levels in hospitalized patients. Consistent with a direct action of
70 beta-lactams, we found an effect only when the patient was colonized with strains
71 sensitive to the administered beta-lactam ($p < 0.001$) but not with non-susceptible strains.
72 We report previously unobserved inter and intra-individual heterogeneity in MRE fecal
73 levels, suggesting that quantitative surveillance is more informative than qualitative
74 surveillance of hospitalized patients. In addition, our study highlights the relevance of
75 incorporating antibiotic treatment and susceptibility data of gut colonizing pathogens for
76 future clinical studies and in clinical decision-making.

77

78 **INTRODUCTION**

79 Resistant Enterobacteriaceae, most notably those that are multidrug-resistant (MRE:
80 acquired non-susceptibility to ≥ 1 agent in ≥ 3 antimicrobial categories) (1), are a major
81 threat for hospitalized patients. Infections by Enterobacteriaceae such as *Klebsiella*

82 *pneumoniae* frequently begin by colonization of the intestinal tract (2), from where they
83 can disseminate to the bloodstream and endanger patients' lives (3). Intestinal
84 colonization by multidrug resistant pathogens can promote their dissemination to other
85 patients through fecal contamination of the environment (4). Understanding what
86 influences MRE intestinal colonization is key to prevent MRE infections.

87 The clinical variables associated with intestinal carriage of resistant
88 Enterobacteriaceae in hospitalized patients have been analyzed before (5-10), but
89 previous studies based on culture analysis defined carriage as the detectable presence of
90 resistant bacteria in fecal samples irrespective of their levels: the question of how MRE
91 levels varied within and between patients remained open. Intestinal levels, and not just
92 detectable presence, are crucial for pathogen dissemination from the gut to the
93 bloodstream (intra-dissemination) and dissemination between patients (inter-
94 dissemination) (11-13). Leukemia patients carrying higher levels ($>10^6$ colony forming
95 units - CFUs/g of fecal sample) of resistant Enterobacteriaceae have 5-fold higher risk of
96 developing bacteremia provoked by these Enterobacteriaceae (11). In addition, patients
97 carrying higher relative abundance of *Enterococcus* or *Klebsiella pneumoniae* in feces, as
98 determined through microbiota sequencing analysis, have increased risk of developing
99 bloodstream infections by these organisms (12, 13). On the other hand, studies with
100 vancomycin-resistant *Enterococcus* (VRE) showed that high intestinal pathogen loads
101 ($>10^4$ CFUs/g) enhance contamination of a patient's environment (4), which facilitates
102 dissemination to other patients (14).

103 While it is important to identify and understand the factors that impact intestinal
104 levels of resistant pathogens, few clinical studies have sought to quantify pathogen loads.

105 Two studies—performed in a single medical center—concluded that the
106 administration of antibiotics with activity against anaerobic bacteria can increase the fecal
107 density of VRE and Gram-negative resistant bacilli (4, 15). This effect may have been
108 caused by depletion of anaerobic commensal microbes, thought to be important in

109 providing colonization resistance (16, 17). However, it is not clear if all antibiotics with
110 antianaerobic activity will increase to the same extent MRE intestinal colonization levels.
111 For example, antibiotics administered intravenously (IV) to treat bloodstream infections
112 must be excreted through the bile in order to reach the intestinal tract. Thus, certain IV
113 antianaerobic therapies may not reach high enough concentrations in the gut to promote
114 MRE intestinal colonization. Besides, while certain antianaerobic therapies mainly affect
115 anaerobes (i.e. metronidazole, clindamycin), others—such as beta-lactams—could impact
116 the growth of MRE directly if they are excreted into the gut in sufficient amounts and that
117 particular MRE is sensitive to the antibiotic.

118 Here we conducted an extensive prospective study to examine the effect of specific
119 antibiotics, as well as other factors such as antifungal treatments or neutropenia, on the
120 gut expansion of MRE. We focused on acute leukemia patients, which are frequently
121 colonized by resistant Enterobacteriaceae (11), to evaluate the range of colonization levels
122 within and between patients, and to further elucidate the impact of IV-administered
123 antibiotics and other clinical factors on the intestinal levels of MRE.

124 RESULTS

125 Study population

126 We initiated a study of 133 acute leukemia patients (Supplementary Tables 1-2), which
127 lasted 18 months. Patients were tracked over multiple hospitalizations (median
128 hospitalizations per patient=3; median hospitalization length=26 days; median number of
129 days a patient was followed=70). The most frequent causes of hospital admission were
130 chemotherapy, infection and transplantation (Supplementary Tables 3,5).

131 Acute leukemia patients received multiple antibiotic treatments during their
132 hospitalization periods (Supplementary Tables 3, 4, 6). All antibiotics were IV-
133 administered except ciprofloxacin, which was administered orally. Ciprofloxacin,
134 administered as prophylaxis immediately upon hospital admission for chemotherapy or
135 transplantation, was the most frequently received antibiotic. Other frequently used

antibiotics administered for empiric treatment of suspected bacteremia included beta-lactams, mainly piperacillin-tazobactam (PTZ) and meropenem, the aminoglycoside amikacin and the glycopeptide vancomycin. Similar results were obtained when days of therapy (DOT) per 1000 patient days were calculated (Supplementary Table 4). Here, ciprofloxacin was the therapy with the most DOT, followed by meropenem, PTZ, vancomycin and amikacin.

MRE prevalence in fecal samples from acute leukemia patients

A total of 802 fecal samples were collected from 133 patients during the study period (6 samples on average per patient). MRE could be detected in 221 samples (27.6%) collected from 80 (60.1%) of the analyzed patients. In 67.8 % of the colonized patients, MREs could be isolated in one or more consecutive samples obtained during the same hospital admission period. The most frequently isolated MRE were *Escherichia coli*, *Citrobacter freundii* and *K. pneumoniae* (Figure 1A). Polymicrobial MRE colonization was relatively frequent: 20.4% of the MRE positive fecal samples were colonized by more than one MRE species (Figure 1B). In addition, MRE strains belonging to the same species but with different antibiotic resistance pattern were identified in 31.7 % of the MRE positive samples. A summary of the detected resistances is shown in Figure 1C and Supplementary Tables 7-8. As expected, considering the media used for MRE isolation, the majority of MRE isolates were resistant to penicillins and third generation cephalosporins (i.e. 100% resistant to ampicillin and 93.9% resistant to cefotaxime). Consistent with the use of ciprofloxacin as prophylactic agent, most MRE isolates were resistant to ciprofloxacin (86.6%). In addition, the majority of isolates were resistant to PTZ (82.3%) and approximately 50% of the isolates were resistant to carbapenems (i.e. imipenem and/or ertapenem). The proportion of resistance varied considerably among different species (Supplementary Table 7).

MRE fecal levels differ significantly within and between patients

162 The levels of MRE (number of CFUs per gram of feces) varied significantly among different
163 samples from the same patient (acquired at different days) and also between patients
164 (Figure 2, Supplementary Table 9). Detected MRE reached high levels in some patients
165 (1.43×10^8 CFUs/g) while in others it stayed scarcely within the limit of detection (50
166 CFUs/g of feces). We saw no statistical significant differences in colonization levels among
167 different MRE species ($p=0.2$; Figure 2B). In order to analyze the dynamics of MRE
168 colonization levels, we studied the change in MRE levels in pairs of fecal samples. The total
169 number of analyzed pairs was 135, obtained from 59 patients. The analysis showed that
170 the levels of MRE changed over time (Figure 2C, D, Supplementary Figure 1) with a pattern
171 suggesting that once an MRE had colonized the intestinal tract, its levels tended to
172 decrease (Figure 2C, D, $p=0.004$).

173 **Antibiotic intravenous therapies that include beta-lactams PTZ and/or meropenem**
174 **decrease MRE fecal levels.**

175 We next studied clinical factors that could explain the detected variability in MRE levels,
176 focusing first on antibiotics. Based on previous studies, that have detected an effect of
177 antianaerobic therapies on the intestinal levels of VRE and resistant gram-negative Bacilli,
178 including MRE (4,15), we first asked whether the introduction of an antibiotic with activity
179 against anaerobes between two consecutive samples acquired from the same patient
180 changed the MRE levels (see in Supplementary Table 10 the antibiotic administered in
181 each pair of samples). As previously described (15), we did not include in this analysis
182 those pairs of samples that had received a therapy with antianaerobic antibiotics in the
183 previous week. Interestingly, introduction of antibiotics with activity against anaerobes
184 between two consecutive samples (21 pairs of samples from 18 patients) diminished on
185 average significantly more the intestinal levels of MRE (Figure 3A, $p=0.026$), as compared
186 to pairs of samples in which an antianaerobic treatment was not administered (38 pairs of
187 samples from 21 patients).

188 In our hospital unit, the most frequently used antibiotics with activity against
189 anaerobes were IV beta-lactams (mainly PTZ and meropenem), which can also directly
190 inhibit the growth of some MRE strains. Indeed, in the 21 pairs of samples included in the
191 group that received antianaerobic therapies, the patient had received at least one of these
192 two beta-lactams (Figure 3B), suggesting a major role for these antibiotics in the detected
193 reduction of MRE levels.

194 **Impact of IV beta-lactams (PTZ and meropenem) on MRE fecal levels depends on the**
195 **MRE resistance profile**

196 The role of IV beta-lactams (i.e. PTZ and meropenem) in decreasing MRE levels
197 could be indirect (e.g. through changes in the microbiome that promote MRE depletion) or
198 it could be direct (by inhibiting MRE growth). To test if IV beta-lactam administration was
199 directly reducing MRE levels, we analyzed the effect of these antibiotics, taking into
200 account the resistance pattern of the MREs isolated (see in Figure 4 and Supplementary
201 Table 11 the antibiotic administered in each pair of samples and the resistant pattern of
202 the MREs isolated). Notably, beta-lactam administration did not affect MRE levels when the
203 MREs isolated in a pair of samples were non-susceptible to the administered antibiotic
204 (Figure 4A, $p=0.77$; 14 pairs of samples from 9 patients). In contrast, beta-lactam
205 administration significantly diminished MRE fecal levels when all the strains isolated
206 within a pair of samples were susceptible to the beta-lactam administered (Figure 4A;
207 $p=0.002$; 16 pairs of samples from 15 patients). We carried out the same analysis but now
208 excluding the patients who had received in the previous week another beta-lactam therapy
209 and saw a similar effect: the levels of MRE strains susceptible to the antibiotic
210 administered decreased ($p=0.001$), but we detected no change in non-susceptible strains
211 ($p=0.33$) (not shown). Notably, this inhibitory effect of beta-lactams on susceptible MRE
212 strains was not associated with treatment length (Supplementary Figure 2A).

213 We noticed that the proportion of MRE species within each group of analyzed
214 samples differed (Figure 4A; Supplementary Table 11). For example, *C. freundii* was

215 common in samples not receiving beta-lactams but was undetected in samples receiving
216 beta-lactams that contained beta-lactam-susceptible strains from other species. To
217 corroborate that the inhibition of susceptible strains was due to the beta-lactams
218 administered and not to confounding differences in their composing MRE species, we re-
219 analyzed the samples exclusively colonized with *E. coli* MRE strains, the most abundant
220 MRE species in our cohort. We saw a similar inhibitory effect of beta-lactams in samples
221 exclusively colonized with *E. coli* (Supplementary Figure 3; $p=0.035$; 9 pairs of samples
222 from 9 patients).

223 The cultivation media used for MRE isolation selects for strains that are producers
224 of extended-spectrum beta-lactamases (ESBL). We confirmed that most of the isolated
225 strains pre and post beta-lactam administration were ESBL producers (80% of analyzed
226 strains; Supplementary Table 11). Most importantly, a similar impact of beta-lactams on
227 MRE levels was detected when we included in the analysis only those pairs of samples
228 containing ESBL+ strains (Supplementary Figure 4).

229 Consistent with the inhibitory effect of IV beta-lactams on MRE susceptible strains,
230 MRE could not be detected after beta-lactam administration in 75% of the cases in which
231 the patient was colonized with MRE strains susceptible to the administered beta-lactam
232 (Table 1; $N=16$ pairs of samples from 15 patients). In contrast, MRE colonization persisted
233 in the majority of the cases in which the patient was not receiving a beta-lactam (only
234 26.1% clearance in 46 pairs of samples analyzed from 27 patients) or when the patient
235 was colonized with strains non-susceptible to the administered beta-lactam (28.5%
236 clearance in 14 pairs of samples analyzed from 9 patients; Table 1).

237 Interestingly, pairs of samples colonized with MRE susceptible strains that were
238 not cleared after IV beta-lactam administration were associated with shorter antibiotic
239 treatment, compared to those pairs of samples where the clearance was detected ($p=0.11$).
240 (Supplementary Figure 2B).

241 A separate analysis of the two most frequently administered beta-lactams (i.e.
242 meropenem and PTZ) provided similar results. As compared to pairs of samples in which a
243 beta-lactam was not administered (46 pairs of samples from 27 patients), introduction of
244 meropenem significantly reduced the MRE levels of strains sensitive to this antibiotic
245 ($p=0.005$; Figure 4B; Table 1; 13 pairs of samples from 13 patients). PTZ also reduced the
246 levels of MRE strains susceptible to this antibiotic (Figure 4C; $p=0.03$), although the
247 number of pairs of samples available for this analysis was low (3 pairs of samples from 3
248 patients). PTZ did not significantly modify the levels of MRE strains non-susceptible to this
249 antibiotic (Figure 4C; $p=0.3$; 10 pairs of samples from 8 patients). Interestingly, the levels
250 of non-susceptible strains increased, on average, with meropenem treatment (Figure 4B;
251 $p=0.017$; 4 pairs of samples from 3 patients). Nevertheless, the number of pairs of samples
252 available for this last analysis was low and the MRE expansion only occurred in 2 out of the
253 4 analyzed cases (Figure 4B). A similar impact of individual beta-lactams on MRE
254 dynamics was detected in those pairs of samples containing exclusively ESBL producing
255 strains (Supplementary Figure 4).

256 **Other drugs showed no impact on MRE colonization**

257 Consistent with its poor biliary excretion, (18, 19) other frequently administered
258 antibiotics such as aminoglycosides (i.e. amikacin) or glycopeptides (i.e. vancomycin and
259 teicoplanin) did not induce observable changes in MRE levels (Supplementary Figure 5,
260 $p>0.05$). We also saw no impact for amikacin on strains sensitive to this antibiotic
261 ($p=0.485$, not shown). The effect of amikacin on non-susceptible strains was not evaluated
262 due to the low number of pairs of samples available ($N=1$). The effect of quinolones on
263 MRE dynamics could not be evaluated since they were administered immediately after
264 hospital admission, before the first fecal sample could be collected.

265 Administration of anti-fungals such as caspofungin or amphotericin did not impact
266 MRE levels either ($p>0.25$). In addition, initiation of neutropenia ($p=0.9$), mucositis

(p=0.83) or starting parenteral feeding (p=0.79) did not affect MRE dynamics between pairs of consecutive samples.

We next applied multivariate statistical analysis, taking into account all clinical variables previously analyzed and other possible confounding factors (i.e. gender, age, type of admission, leukemia type). This analysis confirmed IV-administered beta-lactams to be an independent variable associated with MRE reduction when the MRE is sensitive to the administered beta-lactam (p=0.001).

Beta-lactams (i.e. meropenem/PTZ) could select for MRE clones resistant to the administered antibiotic

The results obtained suggest that IV beta-lactam therapy (i.e. meropenem or PTZ) could diminish the intestinal loads of MRE sensitive to the administered beta-lactam. However, beta-lactam therapy has the implied risk of selecting for resistant strains that could occupy the niche left by the sensitive ones. To investigate this possibility, we focused on patients that were initially colonized with an MRE that was sensitive to the administered beta-lactam and asked whether their levels of MRE and their resistance patterns changed in time (Figure 5, Supplementary Figures 6 and 7). As previously described, meropenem diminished the intestinal loads of meropenem-sensitive strains. During meropenem administration, MRE levels decreased in 12 out of 14 analyzed cases and MRE levels were below the detection limit in 10 cases. Moreover, MRE could no longer be detected in any sample collected after clearance and during the treatment (8 samples from 4 patients that were collected in weeks following MRE elimination). Notably, in 1 out of 4 events in which we could detect MRE during the meropenem treatment, both sensitive and resistant strains to this antibiotic were detected, although the resistant strain was from a different species than the original susceptible strain. Introduction of PTZ decreased MRE levels in the 3 cases in which patients were colonized with strains susceptible to this antibiotic. However, strains non-susceptible to PTZ arose and expanded during PTZ treatment in 2 out of 3 analyzed cases. In this particular case, the non-susceptible strains

294 belong to the same species as the original susceptible ones. Thus, although administration
295 of meropenem and PTZ can overall reduce the levels of MRE susceptible strains,
296 occasionally, non-susceptible MRE strains may arise.

297 Finally, we asked whether cessation of beta-lactam treatment would enable the
298 expansion of MRE strains in those cases in which we observed MRE clearance during
299 treatment. We only had samples from two patients treated with meropenem for this type
300 of analysis (Supplementary Figure 6). In one of these patients (i.e. 105), an MRE from a
301 different species than the one eliminated during meropenem treatment was detected in
302 fecal samples collected 21 days after meropenem cessation. Interestingly, in the patient 75,
303 an MRE (from the same species and with the same antibiotic resistant pattern as the one
304 eliminated during meropenem treatment) was detected 9 days after meropenem
305 cessation, indicating that MRE re-expansion could occur after meropenem withdrawal.

306 DISCUSSION

307 We conducted an extensive survey on MRE intestinal colonization levels in patients
308 hospitalized to receive cancer treatments, including the effect of a range of clinical factors
309 on MRE dynamics. This is, to our knowledge, the first study to investigate quantitatively,
310 through extensive culturing, MRE colonization in such a large cohort of patients, allowing
311 us to investigate the factors associated with temporal changes of MRE levels in the
312 intestinal tract of the same patient. The extensive data generated in this study is publically
313 available (see supplementary material) so that the scientific and clinical community can
314 potentially investigate other factors influencing MRE dynamics within hospitalized
315 patients besides the effect of beta-lactams that we revealed here.

316 Our analysis showed that MRE levels varied significantly between patients and
317 between samples collected from the same patient during the same hospital admission
318 period. Therefore, based on these results and previous studies indicating that higher levels
319 of resistant bacteria increased the risk of pathogen dissemination to the bloodstream or to

the environment (4, 11), it may be useful for clinical practice to accurately measure fecal MRE levels, beyond determining the presence or absence of fecal carriage.

When we started our investigation we expected to find confirmation that antibiotics with antianaerobic activity promote higher intestinal colonization levels of multidrug resistant pathogens such as VRE or resistant gram-negative bacilli (4, 15). However, we found instead that the antibiotics with antianaerobic activity used in our hospital unit diminished, and not increased, the fecal levels of MRE. A separate analysis of specific antibiotics revealed that the beta-lactams (PTZ and meropenem) had the greatest effect. Beta-lactams, although administered intravenously, are partially excreted through the bile to the intestinal tract (18), and could directly affect the growth of MRE. Indeed, we were able to demonstrate that IV administration of PTZ and meropenem diminished the levels of MRE when the strain was sensitive, and not when it was resistant to the administered antibiotic, pointing to the direct effect of these antimicrobials. In some cases, the impact of these beta-lactams was substantial, clearing MRE from the intestinal tract in patients previously colonized with more than 10^6 CFU/g of feces. This result agrees with previous observations in two patients that were highly colonized with Enterobacteriaceae strains sensitive to meropenem, and that were undetectable after IV meropenem treatment (15). Notably, for a couple of patients, in which MRE had been cleared during meropenem treatment, fecal samples could be analyzed after meropenem cessation. In these two patients MRE could be detected again after meropenem withdrawal, suggesting that the inhibitory effect of meropenem was only effective during its administration. Additional studies should be performed in order to evaluate this in a higher number of patients. Since meropenem withdrawal usually occurred at the end of the hospitalization period, this type of analysis would require the collection and analysis of samples beyond the hospitalization period, which was not performed in this study.

The effectiveness of PTZ therapy against certain MRE strains (i.e. those producing ESBL) differs significantly depending on the study. Thus its utility to treat infections by

347 these pathogens remains controversial (20). Indeed, in the only randomized clinical trial
348 performed, PTZ was shown to be less effective than meropenem in the treatment of
349 bloodstream infections produced by Enterobacteriaceae ESBL producer strains (21).
350 Reasons that explain different PTZ treatment outcomes include the site of infection and
351 susceptibility of the ESBL producing strain to PTZ. Our results are consistent with these
352 differential effects of PTZ on ESBL producing strains. We found that PTZ decreased the
353 fecal levels of ESBL producing Enterobacteriaceae that are susceptible to the treatment,
354 while it did not affect the levels of those non-susceptible to this antibiotic. Nevertheless,
355 the obtained results should be confirmed in an extended study since only a few pairs of
356 samples could be included in this analysis. Our data also show occasional selection for
357 strains resistant to PTZ (2 out of 3 cases) and meropenem (1 out of 14 cases). Thus,
358 although both IV PTZ and meropenem decrease the intestinal levels of susceptible strains,
359 their usage should be restricted to the treatment of suspected cases of infection, rather
360 than decontamination of MRE susceptible strains from the intestinal tract.

361 The administration of beta-lactams and more specifically PTZ, apparently did not
362 promote large expansion of MRE strains non-susceptible to the administered beta-lactam
363 in acute leukemia patients. However, our analysis did suggest that the levels of MRE strains
364 non-susceptible to meropenem might increase after meropenem administration. This
365 result, despite passing the common threshold of statistical significance, was based on only
366 four pairs of samples and a closer inspection shows that MRE expanded in only half of
367 those cases. Thus, additional studies should be performed to validate this result.
368 Nevertheless, this is consistent with the result obtained in a study in which carbapenem
369 administration was associated with a higher relative abundance of carbapenem-resistant
370 *K. pneumoniae*, measured by 16s rRNA sequencing, which was associated with increased
371 risk of bloodstream infections (13). Thus, IV meropenem can reduce the fecal levels of
372 susceptible strains, while it may promote the growth of resistant ones.

373 It is worth to mention that our hospital unit rarely uses clindamycin and
374 metronidazole, two antibiotics with a major effect against anaerobic bacteria but with no
375 direct effect against MRE. These antibiotics, in addition to PTZ, were some of the most
376 frequently administered in a previous study showing higher levels of resistant gram-
377 negative bacilli during antianaerobic treatment (15). The different therapies administered
378 in both studies may explain the different results obtained regarding the effect of
379 antianaerobic antibiotics on the growth of resistant pathogens. Indeed, studies performed
380 in mice have shown that parenteral administration of clindamycin consistently promoted
381 high levels of MRE intestinal colonization. In contrast, intestinal density of MRE upon PTZ
382 administration varied depending on the dose of the antibiotic administered, the pathogen
383 inoculum concentration and its level of antibiotic resistance (22). Future studies should
384 elucidate how these variables influence the capacity of beta-lactams to promote intestinal
385 colonization by MRE in patients.

386 We acknowledge several limitations of our study. First, our study was performed in a very
387 specific human population (acute leukemia patients) that may already display an altered
388 microbiota due to prior treatments. Nevertheless, we would expect that beta-lactams effect
389 on susceptible MRE strains would be the same in other types of hospitalized patients since
390 this effect is direct and probably not dependent on the microbiota. Moreover, acute
391 leukemia patients are one of the cohorts with higher risk of infection due to intestinal
392 colonization by MRE and could therefore benefit the most from this type of studies.

393 Second, our study was restricted to the subset of MRE that were able to grow on plates
394 containing a 3rd generation cephalosporin, designed for the detection of ESBL producing
395 strains. Indeed, most of the analyzed strains were ESBL producers. In addition, most of the
396 isolated strains were resistant to quinolones probably because ciprofloxacin is
397 administered in our hospital unit as prophylaxis immediately upon patient's hospital
398 admission. Additional work should be carried out in order to validate our findings on
399 strains with a different resistant background. In addition, further work should be

performed in order to study if the effect of beta-lactams on MRE levels will depend on the different mechanisms of cephalosporin or carbapenem resistance, which were not studied here. Third, our results did not allow us to evaluate the impact of clinical factors on low abundant MRE populations since the MRE antibiotic resistant pattern and taxonomy was only characterized in a few representative isolates from each sample. Fourth, we were able to validate the inhibitory effect of specific beta-lactams on a particular individual MRE species (i.e. *E. coli*). However, the effect on other individual MRE species of interest (e.g. *K. pneumoniae*) could not be evaluated due the limited number of samples containing exclusively these other MREs. Additional studies should be performed to confirm the effect of beta-lactams on other MRE species of interest. Finally, we were not able to evaluate the effect of MRE levels on the risk of bacteremia due to the low number of samples available for this analysis (i.e. N=6 fecal samples collected before bacteremia detection containing the same MRE species as the one isolated in the bloodstream). Nonetheless, previous studies have already pointed to a link between high intestinal levels of drug-resistant bacteria and increased risk of bloodstream infections provoked by these bacteria (11, 13). Additional work should be performed to corroborate those results using quantitative measurements to evaluate if a particular threshold leads to higher risk of bloodstream infections.

In summary, our results revealed a wide diversity of intestinal MRE levels and highlighted the relevance of quantitatively analyzing these levels in surveillance and/or clinical studies. Certain IV-administered antibiotics had a direct effect on the intestinal growth of MRE, and this effect depended on the sensitivity of the pathogen to the given antibiotic. Overall, our study highlights the relevance of incorporating antibiotic treatment and susceptibility data of gut colonizing pathogens for future clinical studies and in clinical decision-making.

MATERIALS AND METHODS

Ethics

427 This study was approved by the Ethics Committee of CEIC Dirección General de Salud
428 Pública and Centro Superior de Investigación en Salud Pública (20130515/08). All
429 included patients gave their consent to participate in the study.

430 **Sample and metadata collection**

431 Fecal samples were collected weekly from November of 2013 until April of 2015 from all
432 acute leukemia patients hospitalized at the Hospital La Fe (Valencia, Spain) who agreed to
433 participate in this study. Procedures of sample collection and metadata acquisition are
434 described in detail in the supplementary data.

435 **Assessing MRE colonization levels and characterization of MRE isolates.**

436 MRE levels, defined as the number of MRE CFUs detected per gram of feces, were
437 determined by culturing 10-fold dilutions of fecal samples in Brilliance ESBL agar plates
438 (Oxoid), which contain cefpodoxime, a third generation cephalosporin as selective agent.
439 These plates allow for isolation of Extended Spectrum Beta-Lactamase (ESBL) producing
440 organisms, while inhibiting the growth of non-ESBL Enterobacteriaceae and most AmpC
441 organisms, allowing mainly for identification of ESBL-producing *E. coli* and the *Klebsiella*,
442 *Enterobacter*, *Serratia* and *Citrobacter* group (known as KESC). The number of colonies in
443 each plate was normalized by dilution and fecal weight in order to calculate the levels of
444 colonization of MRE per gram of feces. To confirm that the detected colonies were MRE,
445 the taxonomy and resistance pattern of 5 isolated colonies per sample were determined
446 through the Maldi-TOF and VITEK system (supplementary methods). In addition,
447 production of extended spectrum beta-lactamases was analyzed in a subset (11%) of the
448 characterized MRE isolates (Supplementary Table 11, Figure 4) as described in the
449 supplementary methods.

450 **Defining pairs of samples and calculating the fold change (FC) among pairs of** 451 **samples to study MRE dynamics.**

452 For analyzing the dynamics of MRE colonization levels, we calculated the log₂FC in MRE
453 levels in pairs of fecal samples. The pairs were defined as two samples consecutively

454 collected from the same patient and same hospital admission period. The first sample of
455 the pair was always positive for MRE. Taking into account the weekly sampling strategy
456 performed in this study, in most cases the two samples were collected one week apart
457 from each other.

458 Sometimes, MRE could not be detected in the second sample of a pair of samples; we
459 define those cases as MRE clearance. To avoid infinite values that would arise by dividing
460 by 0, the limit of the detection (i.e. 50 CFUs/g) was added to the values obtained in each
461 sample as pseudo-counts before calculating the FC.

462 The MRE clearance rate was defined as the number of pairs of samples from the total
463 analyzed in which MRE could not be detected in the second sample of the pair.

464 **Description of the comparisons performed to evaluate the effect of clinical factors**
465 **on MRE dynamics.**

466 1. Effect of antianaerobic antibiotics on MRE dynamics.

467 The log₂FC obtained from pairs of samples in which a therapy with an antianaerobic
468 antibiotic had been initiated was compared with the log₂FC of the group of pairs of
469 samples that had not received such therapy. The group of pairs of samples that had
470 received an antianaerobic therapy was defined, based on previous studies (4, 15), as those
471 in which the MRE levels from the first sample of the pair were available within two weeks
472 before the initiation of the regimen, no antianaerobic antibiotic had been administered
473 within seven days before the regimen was initiated, the level of the second sample within
474 the pair was determined at least two days after the initiation of the treatment but no more
475 than seven days after the completion of the antibiotic course. Although we decided to
476 follow this previously established criteria dictating that the second sample in a pair
477 shouldn't have been collected more than seven days after the cessation of the treatment, it
478 is worth mentioning that in our study all the second samples of analyzed pairs were
479 collected while the treatment was still ongoing. The length of the treatment was not
480 accounted as a variable for this type of analysis. The MRE log₂FC detected in this group of

481 samples was compared with the MRE log₂FC obtained in pairs of samples in which no
482 antibiotic with antianaerobic activity was received neither between the two samples of a
483 pair (including the days in which the samples were collected) nor in the week before the
484 date of collection of the first sample of the pair.

485 Antibiotics included in the analysis with activity against intestinal anaerobes were: PTZ,
486 amoxillin clavulanic, ampicillin, meropenem, ertapenem, imipenem, linezolid,
487 metronidazole, tigecycline. Antibiotics included in the analysis that were considered not
488 active against intestinal anaerobes were: gentamicin, amikacin, cloxacillin, aztreonam,
489 cotrimoxazole, colistin, ciprofloxacin, levofloxacin, daptomycin, vancomycin, teicoplanin
490 (23-30).

491 Daptomycin, despite its *in vitro* effect against gram-positive anaerobic bacteria (27), was
492 included within the group of antibiotics with no activity against intestinal anaerobes. We
493 made this choice because in mice the parenteral administration of this antibiotic does not
494 disrupt the anaerobic flora and does not promote the intestinal colonization of Extended-
495 Spectrum-β-Lactamase-producing *K. pneumoniae* (31). In addition, glycopeptides such as
496 vancomycin and teicoplanin were included in the group with no effect against intestinal
497 anaerobes because they were administered intravenously and their biliary excretion is low
498 (18, 19). Nevertheless, similar results as those shown in Figure 3 were obtained if
499 glycopeptides were included within the group of antibiotics with activity against anaerobic
500 bacteria (not shown).

501 Patients did not receive antibiotic prophylaxis while outpatient. Moreover, in case the patient
502 required an antibiotic for other indications (fever or other symptoms), the patient would be
503 first hospitalized. For this reason, we did not account for the impact of outpatient antibiotic
504 exposure on MRE levels and we focus our analysis on those antibiotics received during the
505 hospitalization period.

506 2. Effect of beta-lactam therapy and other clinical variables on MRE dynamics.

507 A comparison was performed between the $\log_2\text{FC}$ obtained from pairs of samples in which
508 a therapy with a beta-lactam antibiotic had been initiated and the group of pairs of
509 samples that had not received such therapy. The group of pairs of samples that had
510 received the beta-lactam therapy was defined as those in which the MRE levels from the
511 first sample of the pair were available within two weeks before the initiation of the
512 regimen, the levels of the second sample within the pair were determined at least two days
513 after the initiation of the treatment but no more than seven days after the completion of
514 the antibiotic course. As described above, although we decided to follow the criteria
515 established by previous studies (4, 15), in our study, all the second samples of analyzed
516 pairs were collected while the beta-lactam treatment was still ongoing. The length of
517 antibiotic treatment was not accounted as a variable for this type of analysis. To study if
518 the effect of beta-lactams on MRE change was direct (i.e. direct inhibition of MRE on
519 susceptible strains), the pairs of samples selected were divided into two subgroups: (i)
520 pairs of samples containing exclusively strains susceptible to the beta-lactam
521 administered; (ii) pairs of samples containing exclusively strains non-susceptible to the
522 beta-lactam administered. The MRE $\log_2\text{FC}$ detected in these two groups of pairs of
523 samples was compared with the MRE $\log_2\text{FC}$ obtained in pairs of samples in which no beta-
524 lactam was received between the two samples of a pair (including the days in which the
525 samples were collected).

526 In addition to this type of analysis (Figure 4), we performed the same analysis but
527 excluding from the beta-lactam group those pairs of samples that had received another
528 beta-lactam in the week before the initiation of the beta-lactam therapy and we compared
529 it with the groups of samples that had not received beta-lactams neither between the
530 samples of a pair (including the days in which the samples were collected) nor in the week
531 before the date of collection of the first sample of the pair. This type of analysis led to
532 similar results as indicated in the result section, although the number of samples included

533 in this analysis was lower. For this reason and to avoid redundancy, only the first type of
534 analysis is shown in the Figure 4.

535 The same comparisons as with beta-lactams were performed to assess the effect on MRE
536 dynamics of other antibiotics (i.e. glycopeptides and aminoglycosides), antifungal
537 treatments and initiation of parenteral feeding, mucositis or neutropenia. In the case of
538 neutropenia, mucositis or parenteral feeding, the \log_2 FC of pairs of samples in which these
539 events were initiated was compared with pairs of samples collected during periods in
540 which the patient did not have neutropenia, was not fed through the parenteral route or
541 did not develop mucositis.

542 Besides the analysis described above on the effect of antibiotics on MRE changes, previous
543 studies have also compared the levels of resistant pathogens identified during the
544 administration of different groups of antibiotics. Nonetheless, that approach had
545 limitations: (i) it did not take into account those samples in which the pathogen
546 was unable to colonize because of the presence of the antibiotic, and (ii) it did not consider
547 those samples in which the pathogen was eliminated upon the introduction of the
548 antibiotic. As seen in this study, some of the most frequently administered antibiotics in
549 our hospital unit (i.e. meropenem and PTZ) often do eliminate MRE when the strain is
550 sensitive to the antibiotic administered. For this reason, and to make our study
551 more comprehensive, we focused our analysis on the changes in MRE after the
552 introduction of specific antibiotics, which allowed us to account for cases in which the
553 effect of the antibiotic was the complete elimination of the pathogen.

554 **Statistical analysis.**

555 In the case of this descriptive study without hypothesis to be tested, the comparisons and
556 p-values calculated were descriptive and exploratory.

557 Two-tailed Student's t-test was applied in order to analyze if the \log_2 Fold Change MRE
558 levels between groups of samples were significantly different. Fischer's exact test was

559 applied to define if MRE clearance rate (Table 1) was significantly different among groups
560 of samples.

561 Multivariate Lasso regression analysis was performed as described in supplementary
562 methods.

563 P values < 0.05 were considered statistically significant.

564 **ACKNOWLEDGEMENTS:**

565 This work was supported by the InfectERA-ERANET-Acciones complementarias grant
566 [PCIN-2015-094] and grants from the Spanish Ministerio de Economía y Competitividad
567 [SAF2014-60234-R, SAF2014-62369-EXP and SAF2017-90083-R], a Boehringer Ingelheim
568 Fonds travel grant to AD and an F.P.U grant from the Spanish Ministerio de Educación,
569 Cultura y Deporte to B.H. We thank Salvador Giner for his help in determining the
570 antibiotic resistance profile of MRE strains.

571

572

573 **TRANSPARENCY DECLARATIONS**

574 None to declare

575

576 **REFERENCES**

- 577 1. **Magiorakos AP, Srinivasan A, Carey RB, Carmeli Y, Falagas ME, Giske CG,**
578 **Harbarth S, Hindler JF, Kahlmeter G, Olsson-Liljequist B, Paterson DL, Rice LB,**
579 **Stelling J, Struelens MJ, Vatopoulos A, Weber JT, Monnet DL.** 2012. Multidrug-
580 resistant, extensively drug-resistant and pandrug-resistant bacteria: an
581 international expert proposal for interim standard definitions for acquired
582 resistance. *Clinical Microbiology and Infection* **18**:268–281.
- 583 2. **Gorrie CL, Mir eta M, Wick RR, Edwards DJ, Thomson NR, Strugnell RA, Pratt**
584 **NF, Garlick JS, Watson KM, Pilcher DV, McGloughlin SA, Spelman DW, Jenney**
585 **AWJ, Holt KE.** 2017. Gastrointestinal Carriage Is a Major Reservoir of *Klebsiella*
586 *pneumoniae* Infection in Intensive Care Patients. *Clinical Infectious Diseases*
587 **65**:208–215.
- 588 3. **Satlin MJ, Chavda KD, Baker TM, Chen L, Shashkina E, Soave R, Small CB, Jacobs**
589 **SE, Shore TB, van Besien K, Westblade LF, Schuetz AN, Fowler VG, Jenkins SG,**
590 **Walsh TJ, Kreiswirth BN.** 2018. Colonization With Levofloxacin-resistant
591 Extended-spectrum β -Lactamase-producing Enterobacteriaceae and Risk of
592 Bacteremia in Hematopoietic Stem Cell Transplant Recipients. *Clinical Infectious*

- 593 Diseases **67**:1720–1728.
- 594 4. **Donskey CJ, Chowdhry TK, Hecker MT, Høyen CK, Hanrahan JA, Hujer AM,**
595 **Hutton-Thomas RA, Whalen CC, Bonomo RA, Rice LB.** 2000. Effect of antibiotic
596 therapy on the density of vancomycin-resistant enterococci in the stool of colonized
597 patients. *N Engl J Med* **343**:1925–1932.
- 598 5. **Han JH, Bilker WB, Nachamkin I, Tolomeo P, Mao X, Fishman NO, Lautenbach**
599 **E.** 2013. Impact of antibiotic use during hospitalization on the development of
600 gastrointestinal colonization with *Escherichia coli* with reduced fluoroquinolone
601 susceptibility. *Infect Control Hosp Epidemiol* **34**:1070–1076.
- 602 6. **Bert F, Larroque B, Dondero F, Durand F, Paugam-Burtz C, Belghiti J, Moreau R,**
603 **Nicolas-Chanoine MH.** 2013. Risk factors associated with preoperative fecal
604 carriage of extended-spectrum β -lactamase-producing Enterobacteriaceae in liver
605 transplant recipients. *Transpl Infect Dis* **16**:84–89.
- 606 7. **Torres-Gonzalez P, Cervera-Hernandez ME, Niembro-Ortega MD, Leal-Vega F,**
607 **Cruz-Hervert LP, García-García L, Galindo-Fraga A, Martínez-Gamboa A,**
608 **Bobadilla-del Valle M, Sifuentes-Osornio J, Ponce-de-Leon A.** 2015. Factors
609 Associated to Prevalence and Incidence of Carbapenem-Resistant
610 Enterobacteriaceae Fecal Carriage: A Cohort Study in a Mexican Tertiary Care
611 Hospital. *PLoS ONE* **10**:e0139883.
- 612 8. **Arnan M, Gudíol C, Calatayud L, Liñares J, Domínguez MA, Batlle M, Ribera JM,**
613 **Carratalà J, Gudíol F.** 2010. Risk factors for, and clinical relevance of, faecal
614 extended-spectrum β -lactamase producing *Escherichia coli* (ESBL-EC) carriage in
615 neutropenic patients with haematological malignancies. *Eur J Clin Microbiol Infect*
616 *Dis* **30**:355–360.
- 617 9. **Rodríguez-Baño J, Lopez-Cerero L, Navarro MD, de Alba PD, Pascual A.** 2008.
618 Faecal carriage of extended-spectrum beta-lactamase-producing *Escherichia coli*:
619 prevalence, risk factors and molecular epidemiology. *Journal of Antimicrobial*
620 *Chemotherapy* **62**:1142–1149.
- 621 10. **Titelman E, Hasan CM, Iversen A, Naucclér P, Kais M, Kalin M, Giske CG.** 2014.
622 Faecal carriage of extended-spectrum β -lactamase-producing Enterobacteriaceae is
623 common 12 months after infection and is related to strain factors. *Clinical*
624 *Microbiology and Infection* **20**:0508–0515.
- 625 11. **Woerther P-L, Micol J-B, Angebault C, Pasquier F, Pilorge S, Bourhis J-H, de**
626 **Botton S, Gachot B, Chachaty E.** 2015. Monitoring antibiotic-resistant
627 enterobacteria faecal levels is helpful in predicting antibiotic susceptibility of
628 bacteraemia isolates in patients with haematological malignancies. *Journal of*
629 *Medical Microbiology* **64**:676–681.
- 630 12. **Taur Y, Xavier JB, Lipuma L, Ubeda C, Goldberg J, Gobourne A, Lee YJ, Dubin**
631 **KA, Socci ND, Viale A, Perales M-A, Jenq RR, van den Brink MRM, Pamer EG.**
632 2012. Intestinal Domination and the Risk of Bacteremia in Patients Undergoing
633 Allogeneic Hematopoietic Stem Cell Transplantation. *Clinical Infectious Diseases*
634 **55**: 905-914
- 635 13. **Shimasaki T, Seekatz A, Bassis C, Rhee Y, Yelin RD, Fogg L, Dangana T, Cisneros**
636 **EC, Weinstein RA, Okamoto K, Lolans K, Schoeny M, Lin MY, Moore NM, Young**

- 637 **VB, Hayden MK, Centers for Disease Control and Prevention Epicenters**
 638 **Program.** 2019. Increased relative abundance of *Klebsiella pneumoniae*
 639 carbapenemase-producing *Klebsiella pneumoniae* within the gut microbiota is
 640 associated with risk of bloodstream infection in long-term acute care hospital
 641 patients. *Clinical Infectious Diseases* **68**:2053-2059
- 642 14. **Datta R, Platt R, Yokoe DS, Huang SS.** 2011. Environmental cleaning intervention
 643 and risk of acquiring multidrug-resistant organisms from prior room occupants.
 644 *Archives of internal medicine* **171**:491-494.
- 645 15. **Bhalla A, Pultz NJ, Ray AJ, Huyen CK, Eckstein EC, Donskey CJ.** 2003.
 646 Antianaerobic Antibiotic Therapy Promotes Overgrowth of Antibiotic-Resistant,
 647 Gram-Negative Bacilli and Vancomycin-Resistant Enterococci in the Stool of
 648 Colonized Patients. *Infect Control Hosp Epidemiol* **24**:644-649.
- 649 16. **Caballero S, Kim S, Carter RA, Leiner IM, Sušac B, Miller L, Kim GJ, Ling L,**
 650 **Pamer EG.** 2017. Cooperating Commensals Restore Colonization Resistance to
 651 Vancomycin-Resistant *Enterococcus faecium*. *Cell Host and Microbe* **21**:592-
 652 602.e4.
- 653 17. **Ubeda C, Bucci V, Caballero S, Djukovic A, Toussaint NC, Equinda M, Lipuma L,**
 654 **Ling L, Gobourne A, No D, Taur Y, Jenq RR, van den Brink MRM, Xavier JB,**
 655 **Pamer EG.** 2013. Intestinal Microbiota Containing *Barnesiella* Species Cures
 656 Vancomycin-Resistant *Enterococcus faecium* Colonization. *Infection and Immunity*
 657 **81**:965-973.
- 658 18. **Karachalios G, Charalabopoulos K.** 2003. Biliary Excretion of Antimicrobial
 659 Drugs. *Chemotherapy* **48**:280-297.
- 660 19. **Wilson AP.** 2000. Clinical pharmacokinetics of teicoplanin. *Clin Pharmacokinet*
 661 **39**:167-183.
- 662 20. **Schuetz AN, Reyes S, Tamma PD.** 2018. Point-Counterpoint: Piperacillin-
 663 Tazobactam Should Be Used To Treat Infections with Extended-Spectrum-Beta-
 664 LactamasePositive Organisms. *J Clin Microbiol* **56**:2173.
- 665 21. **Harris PNA, Tambyah PA, Lye DC, Mo Y, Lee TH, Yilmaz M, Alenazi TH, Arabi Y,**
 666 **Falcone M, Bassetti M, Righi E, Rogers BA, Kanj S, Bhally H, Iredell J, Mendelson**
 667 **M, Boyles TH, Looke D, Miyakis S, Walls G, Khamis Al M, Zikri A, Crowe A,**
 668 **Ingram P, Daneman N, Griffin P, Athan E, Lorenc P, Baker P, Roberts L, Beatson**
 669 **SA, Peleg AY, Harris-Brown T, Paterson DL, for the MERINO Trial Investigators**
 670 **and the Australasian Society for Infectious Disease Clinical Research Network**
 671 **(ASID-CRN).** 2018. Effect of Piperacillin-Tazobactam vs Meropenem on 30-Day
 672 Mortality for Patients With *E. coli* or *Klebsiella pneumoniae* Bloodstream Infection
 673 and Ceftriaxone Resistance. *JAMA* **320**:984.
- 674 22. **Huyen CK, Pultz NJ, Paterson DL, Aron DC, Donskey CJ.** 2003. Effect of parenteral
 675 antibiotic administration on establishment of intestinal colonization in mice by
 676 *Klebsiella pneumoniae* strains producing extended-spectrum beta-lactamases.
 677 *Antimicrobial Agents and Chemotherapy* **47**:3610-3612.
- 678 23. **Nord CE, Brismar B, Kasholm-Tengve B, Tunevall G.** 1992. Effect of
 679 piperacillin/tazobactam therapy on intestinal microflora. *Scand J Infect Dis* **24**:209-
 680 213.

- 681 24. **Isaac S, Scher JU, Djukovic A, Jiménez N, Littman DR, Abramson SB, Pamer EG,**
682 **Ubeda C.** 2017. Short- and long-term effects of oral vancomycin on the human
683 intestinal microbiota. *Journal of Antimicrobial Chemotherapy* **72**:128–136.
- 684 25. **Nord CE, Kager L, Philipson A, Stiernstedt G.** 1984. Impact of imipenem/cilastatin
685 therapy on faecal flora. *Eur J Clin Microbiol* **3**:475–477.
- 686 26. **Sakata H, Fujita K, Yoshioka H.** 1986. The effect of antimicrobial agents on fecal
687 flora of children. *Antimicrobial Agents and Chemotherapy* **29**:225–229.
- 688 27. **Brook I, Wexler HM, Goldstein EJC.** 2013. Antianaerobic Antimicrobials: Spectrum
689 and Susceptibility Testing. *Clin Microbiol Rev* **26**:526–546.
- 690 28. **Greenwood D.** 1988. Microbiological properties of teicoplanin. *J Antimicrob*
691 *Chemother* **21 Suppl A**:1–13.
- 692 29. **Behra-Miellet J, Calvet L, Dubreuil L.** 2003. Activity of linezolid against anaerobic
693 bacteria. *International Journal of Antimicrobial Agents* **22**:28–34.
- 694 30. **Falagas ME, Kasiakou SK.** 2005. Colistin: the revival of polymyxins for the
695 management of multidrug-resistant gram-negative bacterial infections. *Clinical*
696 *Infectious Diseases* **40**:1333–1341.
- 697 31. **Pultz NJ, Stiefel U, Donskey CJ.** 2005. Effects of daptomycin, linezolid, and
698 vancomycin on establishment of intestinal colonization with vancomycin-resistant
699 enterococci and extended-spectrum-beta-lactamase-producing *Klebsiella*
700 *pneumoniae* in mice. *Antimicrobial Agents and Chemotherapy* **49**:3513–3516.

701

702 **FIGURE LEGENDS**703 **Figure 1. MRE positive samples show diverse compositions and antibiotic resistance**704 **patterns of detected MRE isolates.** MRE could be detected in 221 samples collected from705 80 of the analyzed patients. **(A)** The most frequently isolated MRE belonged to the species706 *Escherichia coli*. Other detected MRE in order of prevalence were *Citrobacter freundii*,707 *Klebsiella pneumoniae*, *Klebsiella oxytoca*, *Enterobacter cloacae*, *Morganella morganii*,708 *Citrobacter amalonaticus*, *Raoultella spp.* and *Escherichia hermannii*. Other MRE species,709 including *Citrobacter braakii*, *Proteus vulgaris*, *Serratia marscescens*, *Enterobacter*710 *aerogenes* and *Escherichia fergusonii* were detected in only one sample. **(B)** In 45 of the

711 221 MRE positive samples (20.4%), MRE belonging to more than one bacterial species

712 could be identified, and in 70 of the MRE positive samples (31.7%), MRE strains belonging

713 to the same species but with different antibiotic resistance pattern were identified. **(C)**

Antibiotic resistance pattern of MRE isolates detected in 221 positive samples. When two isolates from the same sample have exactly the same resistance pattern and taxonomy, only one of the two isolates is shown. Columns and rows are grouped based on MRE taxonomy and antibiotics' class. S: susceptible; I: intermediate resistant phenotype; R: resistant. NA: not-analyzed.

Figure 2. MRE fecal levels differ significantly between patients but also within a patient. (A) MRE levels identified in all colonized fecal samples included in the study (N=221 samples) or the mean (obtained from log₁₀ CFU data) of the MRE levels identified in colonized samples from each patient (N=80 patients). Whiskers represent minimum and maximum values. Horizontal lines represent the median and 25-75 percentiles. **(B)** MRE levels in fecal samples colonized exclusively with the indicated species (low abundant species: N≤5, are not included). No significant (ns) differences in MRE levels were detected between different species (Kruskal-Wallis test). N= 45 (*C. freundii*); 14 (*E. cloacae*); 13 (*K. oxytoca*); 65 (*E. coli*) and 31 (*K. pneumoniae*) samples. **(C)** Changes in MRE levels among 135 pairs of consecutive fecal samples (see Methods for definition) collected from 59 patients. The grey bar represents the median of MRE levels. **p<0.01; Two-tailed paired Wilcoxon test. **(D)** Number of the total pairs of consecutive samples included in the study (all) and number of pairs of samples in which an increase in MRE levels (> 1 log₂ fold change – FC; N=39) or a decrease in MRE levels (< -1 log₂ FC; N=81) was detected.

Figure 3. Antibiotic therapies including the beta-lactams piperacillin-tazobactam and meropenem decrease MRE fecal levels. (A) MRE log₂FC among pairs of consecutive samples between which a therapy with an antibiotic with activity against anaerobic bacteria was initiated (+), as compared to pairs of samples in which no antianaerobic antibiotics were administered (-). N=38 pairs of samples from 21 patients and 21 pairs of samples from 18 patients for the antianaero (-) and (+) groups respectively. *p<0.05; Two-

741 tailed t-test. Bars represents the mean, whiskers represent the SEM. **(B)** Antibiotics with
742 antianaerobic activity that were administered between each pair of samples shown in (A).
743 Colors in (A) indicate the taxonomy of the MRE identified in each pair of samples. Detailed
744 taxonomy and antibiotic resistant pattern of all the MREs identified within each pair of
745 samples is shown in Supplementary Table 10. PTZ=piperacillin-tazobactam.

746 **Figure 4. Impact of IV beta-lactams (piperacillin-tazobactam and meropenem) on**
747 **MRE fecal levels depends on the MRE resistance profile. (A)** MRE \log_2 FC among pairs
748 of consecutive samples between which a beta-lactam (i.e. piperacillin-tazobactam or
749 meropenem) was administered (+) or not (-). MRE strains detected in the consecutive
750 pairs of samples analyzed were either susceptible (S), or non-susceptible (R/I) towards
751 the administered beta-lactam. (B, C) Same as in (A) but only including pairs of samples in
752 which the beta-lactam therapy initiated between the pair of samples was exclusively
753 meropenem (B) or exclusively piperacillin-tazobactam (C). * $P < 0.05$; ** $P < 0.01$; two-tailed t-
754 test compared with the group not receiving beta-lactams. The results show that beta-
755 lactams (i.e. meropenem and piperacillin-tazobactam) reduce the levels of MRE strains
756 susceptible to the beta-lactam administered. Colors indicate the taxonomy of the MRE
757 identified in each pair of samples. Detailed taxonomy and antibiotic resistant pattern of all
758 the MREs identified within each pair of samples is shown in Supplementary Table 11. The
759 number of pairs of samples (S) and patients (P) included in each group are: no beta-lactam
760 (S=46, P=27); susceptible to beta-lactams (S=16, P=15); non-susceptible to beta-lactams
761 (S=14, P=9); susceptible to meropenem (S=13, P=13); non-susceptible to meropenem
762 (S=4, P=3); susceptible to PTZ (S=3, P=3); non-susceptible to PTZ (S=10, P=8).

763 **Figure 5. Meropenem and piperacillin-tazobactam decrease fecal levels of**
764 **susceptible MRE but occasionally resistant strains emerge.** MRE levels and sensitivity
765 pattern to the beta-lactam received before and during therapy with meropenem (A) or
766 piperacillin-tazobactam (PTZ) (B). Consecutive samples collected from the same patient
767 and admission period are connected with a line. Sensitivity to the antibiotic is indicated

when the MRE could be detected. N^o of samples in which an MRE could not be detected on each specific day is indicated. Note that the first sample contains always MRE strains susceptible to the beta-lactam received. S= susceptible, R= resistant, I=intermediate phenotype. Colors indicate the taxonomy of the MRE identified in each sample. Days are relative to the date of the first sample included in the figure for each patient. Graphs for each individual patient and samples collected after beta-lactam cessation are shown in Supplementary Figures 6 and 7. N= 14 patients for meropenem group and 3 patients for the PTZ group. Note that as compared to Figure 4, there is one more patient receiving meropenem in this Figure. This is because in Figure 4 a pair of samples was included in the group of pairs sensitive to meropenem only if all MRE strains characterized in the pair were sensitive to the antibiotic.

779

780 **Table 1. MRE clearance after beta-lactam (piperacillin-tazobactam or**
781 **meropenem) administration.**
782

β -lactam ^a	Susceptibility ^b	MRE clearance rate ^c	Significance ^d
None	NA	12/46 (26.1%)	
PTZ/Meropenem	S	12/16 (75%)	***
PTZ/Meropenem	R/I	4/14 (28.5%)	NS
PTZ	S	2/3 (66.6%)	NS
PTZ	R/I	4/10 (40%)	NS
Meropenem	S	10/13 (77%)	*
Meropenem	R/I	0/4 (0%)	NS

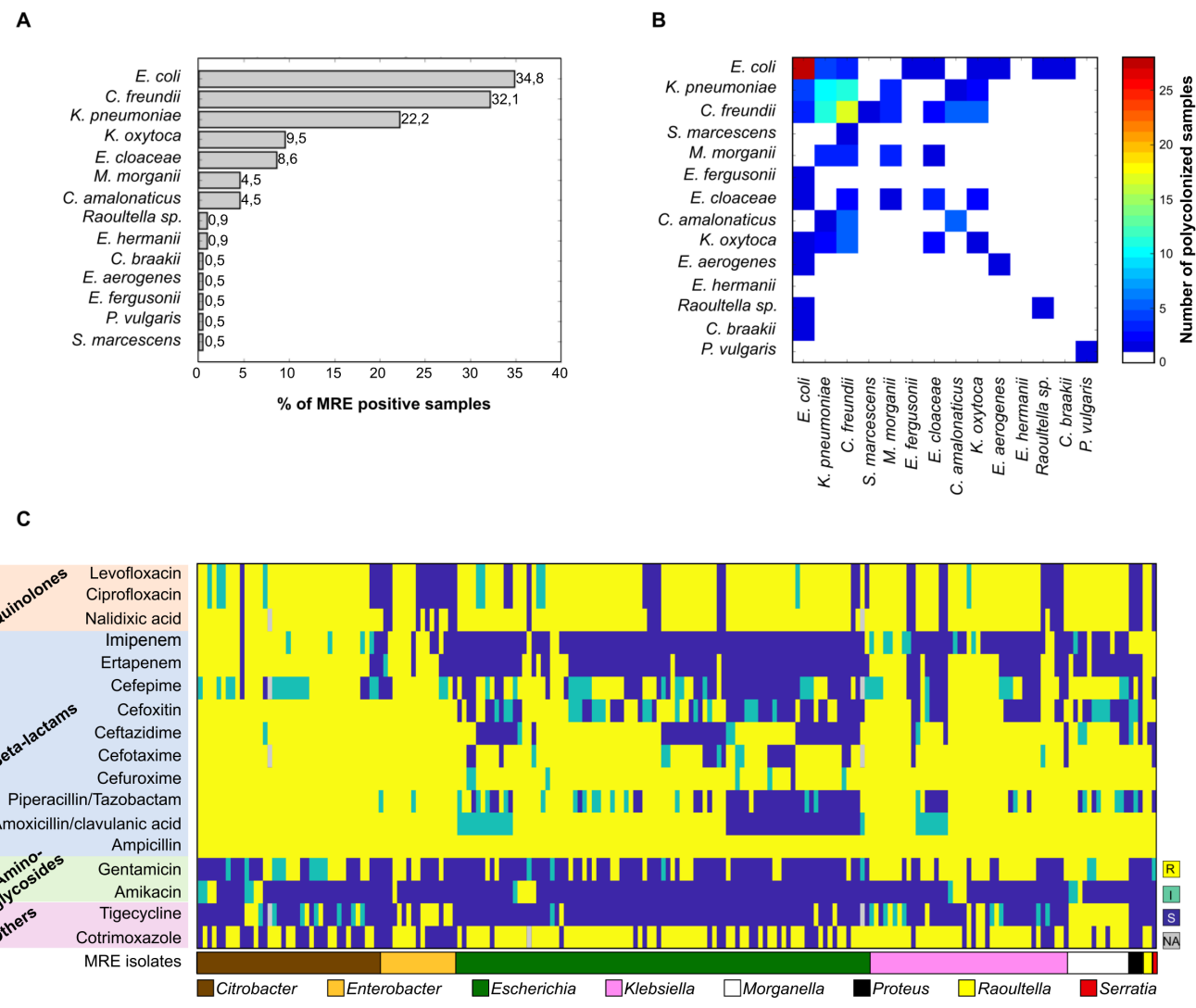
783

784 ^a β -lactam that was administered between a pair of samples. PTZ/Meropenem:
785 piperacillin/tazobactam and/or meropenem were administered. Exclusively
786 piperacillin/tazobactam (PTZ) or meropenem therapy was initiated between a pair of samples.

787 ^b Susceptibility of the MRE to the administered antibiotic. S= susceptible; R/I=non-susceptible
788 (resistant/intermediate phenotype). NA: non-applicable.

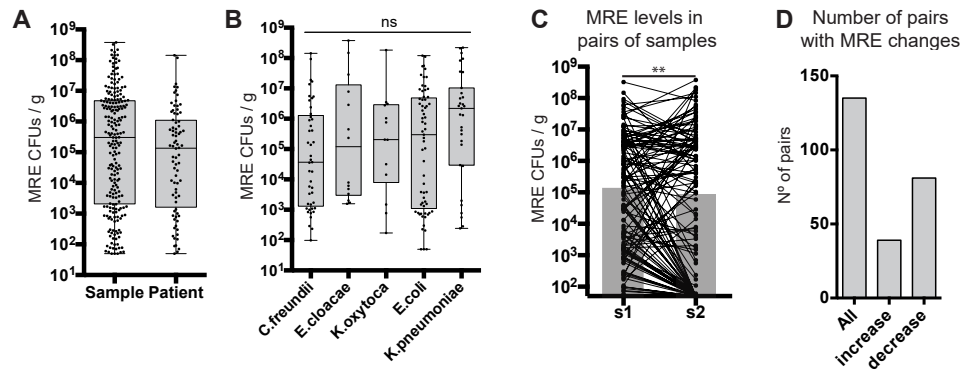
789 ^c Number of pairs of samples from the total analyzed in which the MRE was not detected in the
790 second sample of the pair. Numbers in parenthesis indicate % of clearance.

791 ^d Significance. *P<0.05; ***P<0.001; NS=P>0.05; Fischer test comparing with the group in which no
792 β -lactams were administered.
793



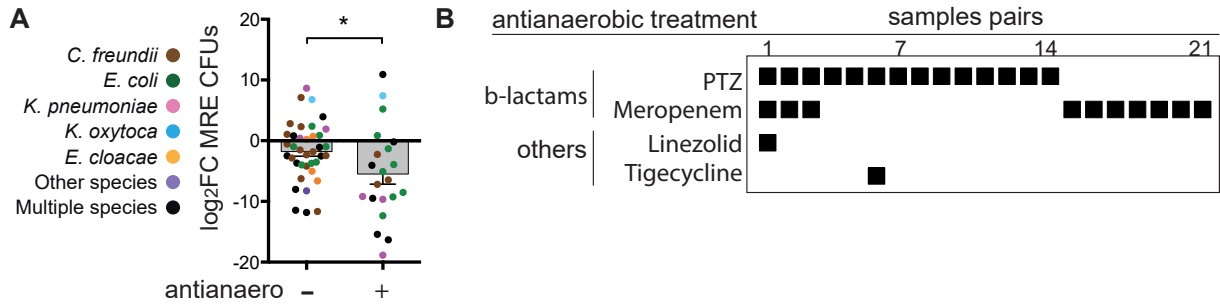
Comment citer ce document :

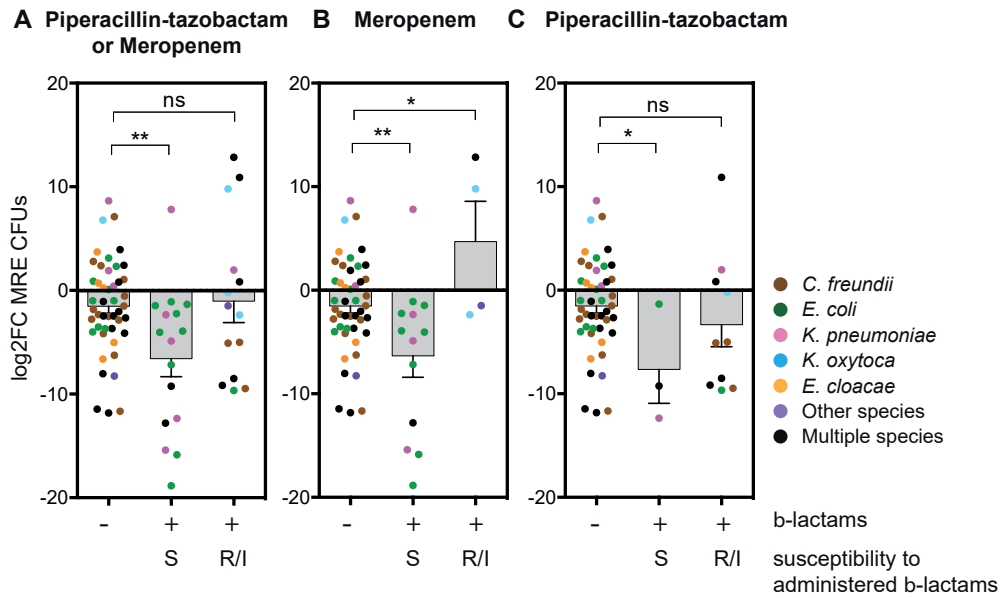
Djukovic, A., González-Barberá, E. M., Sanz, J., Artacho, Peñaranda, Herrera, Garzón, Salavert, López-Hontangas, Xavier, K. B., Kuster, B., Debrauwer, L., Rolain, J.-M., Sanz, M., Xavier, J., Ubeda, C. (Auteur de correspondance) (2020). High heterogeneity of multidrug-resistant Enterobacteriaceae fecal levels in hospitalized patients is partially driven by intravenous



Comment citer ce document :

Djukovic, A., González-Barberá, E. M., Sanz, J., Artacho, Peñaranda, Herrera, Garzón, Salavert, López-Hontangas, Xavier, K. B., Kuster, B., Debrauwer, L., Rolain, J.-M., Sanz, M., Xavier, J., Ubeda, C. (Auteur de correspondance) (2020). High heterogeneity of multidrug-resistant Enterobacteriaceae fecal levels in hospitalized patients is partially driven by intravenous





Comment citer ce document :

Djukovic, A., González-Barberá, E. M., Sanz, J., Artacho, Peñaranda, Herrera, Garzón, Salavert, López-Hontangas, Xavier, K. B., Kuster, B., Debrauwer, L., Rolain, J.-M., Sanz, M., Xavier, J., Ubeda, C. (Auteur de correspondance) (2020). High heterogeneity of multidrug-resistant Enterobacteriaceae fecal levels in hospitalized patients is partially driven by intravenous

