



HAL
open science

Optimized fixation of actin filaments for improved indirect immunofluorescence staining of rickettsiae

Monika Danchenko, Lucia Csaderova, Pierre Edouard Fournier, Zuzana Sekeyová

► To cite this version:

Monika Danchenko, Lucia Csaderova, Pierre Edouard Fournier, Zuzana Sekeyová. Optimized fixation of actin filaments for improved indirect immunofluorescence staining of rickettsiae. *BMC Research Notes*, 2019, 12 (1), 10.1186/s13104-019-4699-9 . hal-02469781

HAL Id: hal-02469781

<https://amu.hal.science/hal-02469781>

Submitted on 13 Oct 2023

HAL is a multi-disciplinary open access archive for the deposit and dissemination of scientific research documents, whether they are published or not. The documents may come from teaching and research institutions in France or abroad, or from public or private research centers.

L'archive ouverte pluridisciplinaire **HAL**, est destinée au dépôt et à la diffusion de documents scientifiques de niveau recherche, publiés ou non, émanant des établissements d'enseignement et de recherche français ou étrangers, des laboratoires publics ou privés.



Distributed under a Creative Commons Attribution 4.0 International License

RESEARCH NOTE

Open Access



Optimized fixation of actin filaments for improved indirect immunofluorescence staining of rickettsiae

Monika Danchenko¹, Lucia Csaderova¹, Pierre Edouard Fournier² and Zuzana Sekeyova^{1*}

Abstract

Objective: The objective was to investigate fixative solutions: 3.7% formaldehyde, 4% paraformaldehyde, 4% paraformaldehyde in the cytoskeletal buffer and 4% paraformaldehyde in PHEM buffer (containing PIPES, HEPES, EGTA and MgCl₂), applicable for immunofluorescence assay.

Results: Herein we optimized this serological technique, testing four fixative solutions, for the sensitive detection of rickettsial antigens, and preservation of intracellular structures of the host cells, particularly filamentous actin. Rickettsial antigens were presented equally well both with formaldehyde and all paraformaldehyde-based fixations, but only protocol with 4% paraformaldehyde in PHEM buffer allowed accurate imaging of actin filaments, and simultaneously allows monitoring of rickettsiae using actin-based motility during infection inside the host cells.

Keywords: Immunofluorescence assay, Rickettsiae, Cytoskeleton fixation, Cell culture, Actin-based motility

Introduction

Members of the genus *Rickettsia* are Gram-negative strictly intracellular Alphaproteobacteria, multiplying by binary fission in the cytoplasm and nuclei of infected host cells [13, 19]. Rickettsiae are arthropod-vector-borne pathogens, causing from mild to very severe diseases in animals and humans, which are widely distributed throughout the world [2, 20]. Serology using indirect immunofluorescence assay (IFA) is considered as the “gold standard” for diagnostic confirmation [16]. Molecular detection using polymerase chain reaction (PCR) demonstrates the presence of the bacterium itself. However, a positive PCR does not predict the viability of bacteria and does not provide an accurate indication of their localization in tissues.

According to phylogenomic studies, *Rickettsia* spp. are divided into spotted fever group (SFG), typhus group (TG), transitional group (TRG) and ancestral group (AG)

[8, 18]. SFG rickettsiae and one TG species, *R. typhi*, can polymerize actin of eukaryotic host cells and use actin-based motility for intra- and intercellular spread. Assembly of the filamentous actin “tail” transports the pathogen through the host cytosol and to cell membranes [9, 11]. Therefore, actin “tails” appear as adequate target to be visualized during active rickettsial infection in the eukaryotic cell.

We would like to investigate four fixative solutions: 3.7% formaldehyde (FA), 4% paraformaldehyde (PFA), 4% paraformaldehyde in cytoskeletal buffer (PFA + CB) [24] and 4% paraformaldehyde in PHEM buffer (PFA-PHEM) [25], with the aim to optimize preservation of rickettsial antigens, the morphology of the host cell constituents, and to visualize dispersal of actin “tails”.

Main text

Methods

Reagents

Paraformaldehyde, MES hydrate, EGTA, HEPES, Triton X-100 and Tween 20 were from Sigma-Aldrich (USA). Blotting-grade blocker non-fat dry milk was from Bio-Rad (USA). Potassium chloride, magnesium dichloride,

*Correspondence: viruseke@savba.sk

¹ Biomedical Research Center, Slovak Academy of Sciences, Dúbravská cesta 9, 845 05 Bratislava, Slovakia

Full list of author information is available at the end of the article



potassium dihydrogen phosphate, potassium hydrogen phosphate, sodium hydrogen phosphate, sucrose and formaldehyde (FA) were from Slavus (Slovakia). Sodium chloride was from CentralChem (Slovakia). Potassium hydroxide and sodium hydroxide were from Lachema (Czech Republic). PIPES was from AppliChem (Germany). Glutamic acid was from Duchefa Biochemie (Netherlands). Dulbecco's Modified Eagle's Medium, trypsin 10x with versene and fetal bovine serum were from Lonza (Switzerland). Vectashield Mounting Medium with DAPI was from Vector Laboratories (UK). We handled all chemical compounds according to the recommendations in their safety data sheets.

Antibodies

Rhodamine Red-X goat anti-rabbit IgG (H + L) polyclonal secondary antibody was from Invitrogen (reference number R6394, lot: 1402199, made in the USA). Alexa Fluor 488 phalloidin was from Invitrogen (reference number A12379, lot: 1378369, made in the USA). We prepared primary anti-*Rickettsia akari* and anti-*Rickettsia slovaca* rabbit antibodies (in serum) in our experimental animal facility at Biomedical Research Center.

Bacterial species and host cell line

The bacterial species used in the study were *Rickettsia akari*, strain MK (Kaplan, ATCC VR-148) and *Rickettsia slovaca*, strain 13-B (ATCC VR-1639). Bacteria were propagated in confluent monolayers of Vero cell line (African green monkey kidney cells, ATCC CCL-81), maintained in RPMI 1640 medium supplemented with 2 mM L-glutamine, 25 mM HEPES and heat-inactivated fetal bovine serum at 34 °C in a humidified 5% CO₂ incubator. Rickettsiae were purified by isopycnic density gradient centrifugation [1, 29]. Infections of the host cells were initiated from frozen rickettsial stocks stored in SPG buffer (0.218 M sucrose, 3.76 mM KH₂PO₄, 7.1 mM K₂HPO₄ and 4.9 mM potassium glutamate). The concentration of the rickettsiae was determined by Real-Time quantitative PCR as described earlier [5].

Immunofluorescence assay

One day prior to the experiment, host cells were trypsinized and seeded onto 12-well plates appropriate for tissue culture, containing round glass coverslips and supplemented RPMI medium. Cultured to semi-confluence, Vero cells were infected with rickettsiae (multiplicity of infection, MOI = 25). After 48 h, the medium was aspirated, and infected cells were gently washed twice with pre-warmed PBS (0.13 M NaCl, 0.01 M Na₂HPO₄, 1.5 mM KH₂PO₄, pH 7.2).

Next, four different fixatives were added for comparison: 3.7% formaldehyde in PBS pH 7.2 (FA), 4%

paraformaldehyde in PBS pH 7.2 (4% PFA), 4% paraformaldehyde in cytoskeleton buffer (4% PFA + CB) containing 10 mM MES hydrate pH 6.1, 1 mM KCl, 3 mM MgCl₂, 2 mM EGTA and 0.32 M sucrose [24] and 4% paraformaldehyde in PHEM buffer (PFA-PHEM) containing 60 mM PIPES, 25 mM HEPES, 10 mM EGTA, 2 mM MgCl₂, pH 6.9 [25]. We allowed fixation at 37 °C for 15 min in the case of 3.7% FA and 4% PFA, or at room temperature for 10 min in the case of 4% PFA-PHEM and 4% PFA + CB.

After removing the fixatives, cells on the coverslips were washed three times with PBS, moderately agitating for 2 min on a shaker. For permeabilization, we added 0.1% Triton X-100 in PBS to each well and cells were incubated at room temperature for 7 min. This step was followed by washing with PBS as described above. Blocking was performed at 37 °C for 1 h with 5% milk solution in PBS.

After aspiration of the blocking solution, cells on the coverslips were washed, and intracellular bacteria were subsequently probed with a primary antibody. Rabbit serums containing polyclonal anti-*Rickettsia* antibodies were diluted 1:100 with 5% milk in PBS and samples were incubated at 37 °C for 1 h. Each coverslip was then washed three times to remove unbound antibodies by adding 0.1% Tween 20 in PBS, moderately agitating for 5 min on a shaker. For visualization of rickettsiae, we applied fluorophore-conjugated goat anti-rabbit secondary antibody diluted 1:1000 into 5% milk in PBS. Subsequently, cell cultures were incubated at 37 °C for 1 h in the dark. Afterward, the coverslips were thoroughly washed with 0.1% Tween 20 in PBS.

To localize filamentous actin, the cells were probed with fluorescently tagged phalloidin, diluted into 5% milk in PBS according to the manufacturer's instruction. Plates were incubated at room temperature for 30 min in the dark. After three further prolonged washing with 0.1% Tween 20 in PBS, coverslips were air-dried and counterstain with mounting medium containing DAPI. Specimens were stored at - 20 °C.

Controls

Slides with infected cells treated only with 5% milk in PBS and conjugated secondary antibody mixture were included to ensure the absence of nonspecific reactivity with the sample. Uninfected cells treated with both primary and secondary antibodies were used as negative controls to show the specificity of the primary antibody used for detection of rickettsiae.

Fluorescent microscopy

Images of stained samples were acquired by a confocal fluorescence microscope (Zeiss LSM 510 META,

Germany) in multi-track scanning mode using Plan Apochromat 100×/1.40 oil immersion objective. The microscope settings were as follows: excitation of 420 nm, band pass filter 420–480 nm to visualize nuclei, excitation 488 nm, band pass filter 505–550 nm for actin (fluorophore Alexa Fluor 488), excitation 543 nm and long pass filter over 560 nm for rickettsia (fluorophore Rhodamine Red-X). Brightness and contrast were adjusted, if necessary, by LSM Image Browser software from Zeiss.

Results

We used a range of available fluorophores which facilitate the simultaneous localization of as many as three

structures/epitopes of interest in a single cell: *Rickettsia* sp. (Rhodamine Red), filamentous actin (Alexa Fluor 488) and host cell nuclei (DAPI). Representative results from the comparison of the suitability of aldehyde fixatives for infected Vero cells in vitro with two different species of the genus *Rickettsia*, namely *R. akari* and *R. slovaca*, are shown in Figs. 1 and 2, respectively.

A rickettsial antigen is preserved equally well with formaldehyde and paraformaldehyde-based fixation

We detected selective and robust staining for rickettsial antigens with both tested species. We did not observe relevant differences in the quality of the micrographs, which would be attributed to the use of either

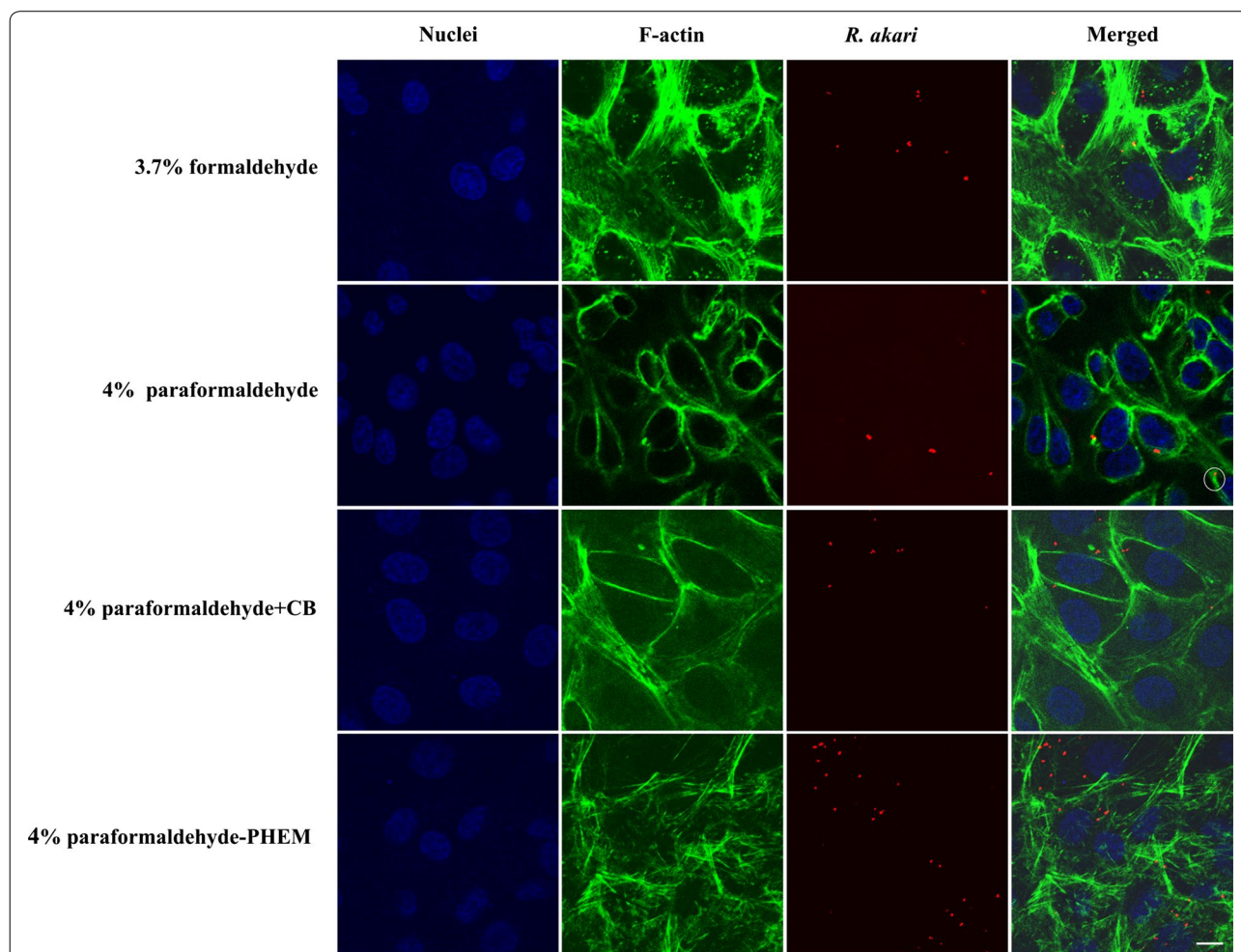
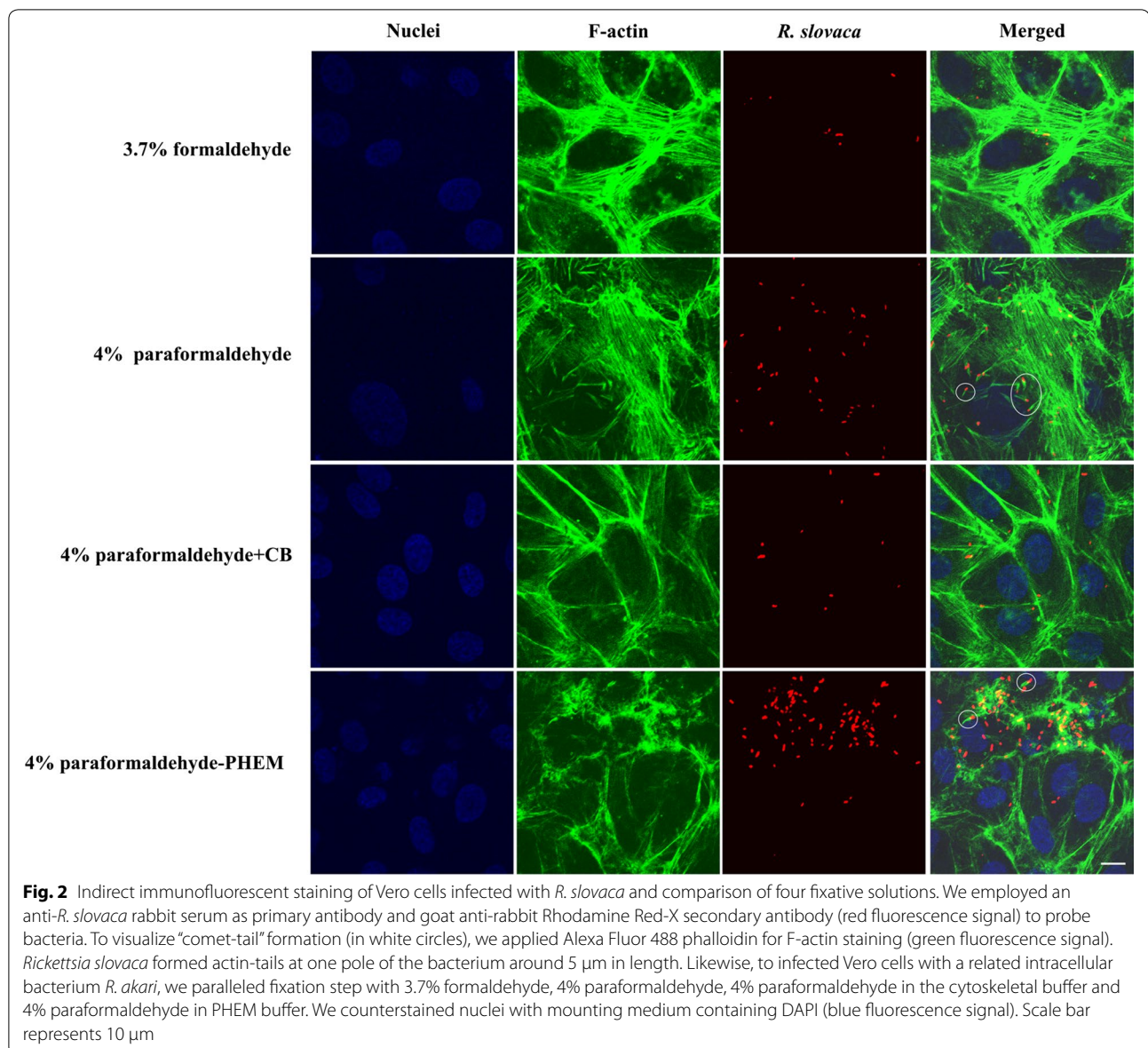


Fig. 1 Indirect immunofluorescent staining of Vero cells infected with *R. akari* and comparison of four fixative solutions. We applied an anti-*R. akari* rabbit serum as primary antibody and goat anti-rabbit Rhodamine Red-X secondary antibody (red fluorescence signal) to visualize bacteria. To show the overall shape of the host cells and actin polymerization by *R. akari* (in a white circle), we employed Alexa Fluor 488 phalloidin for F-actin staining (green fluorescence signal). We compared 3.7% formaldehyde, 4% paraformaldehyde, 4% paraformaldehyde in the cytoskeletal buffer and 4% paraformaldehyde in PHEM buffer as fixatives. For nuclear counterstaining, mounting medium with DAPI was used (blue fluorescence signal). Scale bar represents 10 μm



formaldehyde or paraformaldehyde. Co-localized signal (yellow reaction product—equals a red signal of rickettsiae and green signal of filamentous actin) was demonstrated in almost all captured merge images, providing proof of intracellular localization of bacteria.

Additionally, we also prepared appropriate controls. Uninfected Vero cells probed with both primary and conjugated secondary antibodies gave no rhodamine red response. Likewise, slides with infected cells but without primary antibodies against *R. akari* or *R. slovaca* displayed no specific red signal.

Fixation with PFA-PHEM buffer allows accurate imaging of actin filaments

Phalloidin (a fungal toxin of *Amanita phalloides* that binds specifically to filamentous actin), conjugated to a

fluorophore, showed strong signal intensity with all four tested fixatives in infected (Figs. 1, 2) and control cells.

Formaldehyde fixation retained cytoskeletal structure the most poorly compared to other tested fixatives; filamentous actin appeared as beads on long fibers, giving it a broken appearance. Paraformaldehyde allowed revealing actin more faithfully as continuous filaments showing the overall shape of host cells. We were able to visualize “actin-tail” formation of *R. akari* and *R. slovaca* in both, 4% PFA- and PFA-PHEM-fixed infected host cells (highlighted in white circles in Figs. 1, 2, and 3, respectively).

Vero cell line, mock or infected, treated with 4% PFA + CB gave nonspecific signals more often than samples fixed with 4% PFA or PFA-PHEM (highlighted with a white arrow in Fig. 3) thus, we do not recommend this procedure.

Paraformaldehyde dissolved in PHEM buffer preserved the proper architecture of actin filaments forming a distinctive net throughout the cell. Therefore, we recommend using 4% PFA-PHEM buffer as the optimized procedure for immunofluorescent localization of *Rickettsia* sp. and “actin-tail” formation by these pathogens. However, we would like to note, that 4% PFA can also be used as a viable simplified alternative.

The summary of our findings in merged images of infected Vero cells with rickettsiae fixed with different cytoskeletal preserving solutions is shown in Fig. 3.

Discussion

Here we present the effects of four aldehyde-based fixatives on Vero cells infected with rickettsiae (namely *R. akari* and *R. slovaca*) in vitro and provide a detailed optimized protocol for immune-based protein localization in three-color images (Figs. 1, 2 and 3).

The ability of rickettsiae to use actin-based motility was confirmed in several species of the SFG [3, 4, 12, 27]. *Rickettsia slovaca*, is commonly found in *Dermacentor* ticks in Slovakia [23, 26]. Comparing to *R. rickettsii* and *R. conorii*, which both typically exhibit a “comet tail” greater than 10 μm , *R. slovaca* seems to form it shorter,

about 5 μm [10, 28]. Similarly, *R. akari* belonging to the transitional group of rickettsiae, promotes directional actin polymerization [12, 14].

Indirect immunofluorescence is widely used for the detection of pathogens in cell cultures [6, 15]. The first step in any successful immunocytochemical localization is the choice of fixative and fixation conditions [17].

Formaldehyde (the 1st alternative of fixation) works by chemically bonding adjacent macromolecules (neighbouring proteins) together, locking them in place with little morphological damage, so-called cross-linking [30].

Paraformaldehyde (the 2nd) is polymeric formaldehyde dissolved in water or a buffer. The free methanediols in the resulting solution are reactive with amine groups on proteins and other cellular structures that contain nitrogen. PFA crosslinks amino groups without changing the tertiary structure of proteins, therefore leaving most epitopes available for binding antibodies [7, 21]. Paraformaldehyde dissolved in the cytoskeletal buffer (PFA + CB) (the 3rd) with the inclusion of sucrose keeps the cell iso-osmotic, which also might help to preserve internal cell structures. Similarly, paraformaldehyde in PHEM buffer (the 4th) containing a high concentration of EGTA (10 mM or more) conserves structural integrity of all fibrous components of the cytoskeleton [22].

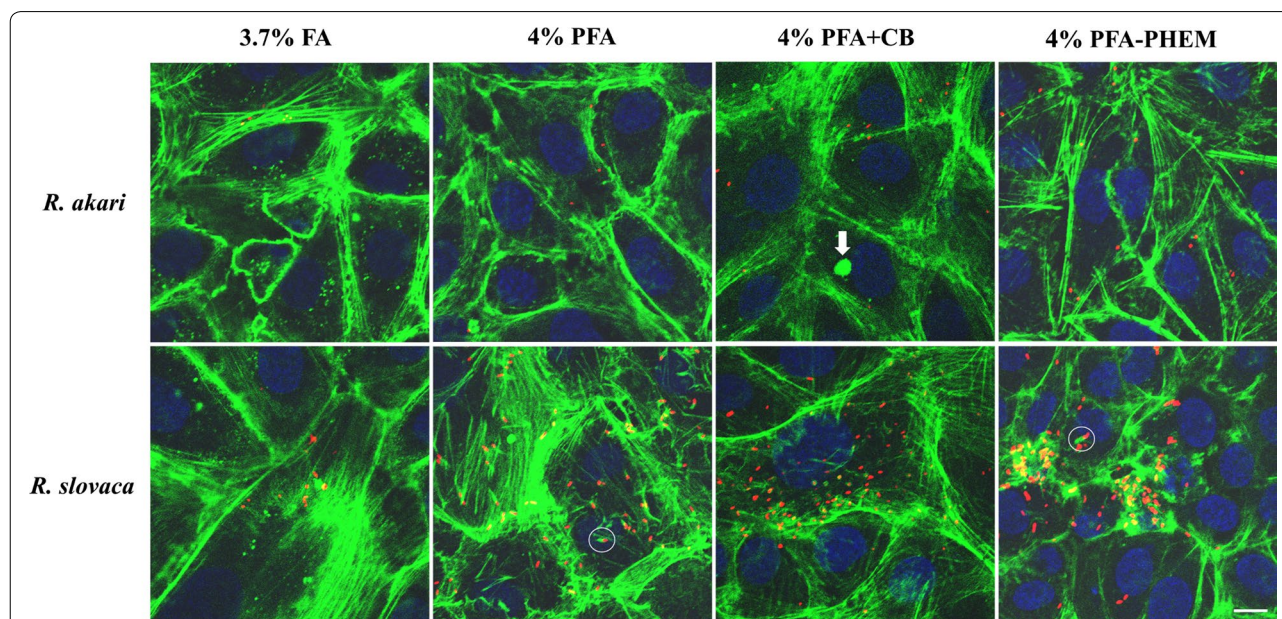


Fig. 3 Merged images of infected Vero cells with rickettsiae and comparison of four fixative, summary of results. We ran parallel experiments on Vero cells infected with two species of rickettsiae, namely *R. akari* and *R. slovaca*, for optimization of fixatives to properly preserve actin cytoskeleton. We tested four fixatives, 3.7% formaldehyde (FA), 4% paraformaldehyde (PFA), 4% paraformaldehyde in the cytoskeletal buffer (PFA + CB) and 4% paraformaldehyde in PHEM buffer (PFA-PHEM). Formaldehyde conserved actin as discontinuous filaments compared to PFA-based fixatives. Unspecific artifact observed in 4% PFA + CB treatment is marked with an arrow. Our results suggest that 4% PFA-PHEM buffer gives the most accurate image of the actin cytoskeleton and simultaneously allows monitoring rickettsiae using actin-based motility during infection inside the host cells. Scale bar represents 10 μm

Conclusions

We showed that an optimized fixation of actin filaments with 4% PFA-PHEM improved indirect immunofluorescence staining of rickettsiae. This allowed to accurately visualizing the actin-based motility of *R. akari* and *R. slovaca*. We suggest this approach as possibly applicable for imaging of other intracellular bacteria in host cells as well.

Limitations

- choice of fixative
- choice of fixation conditions
- sensitivity of antibodies
- specificity for an antigen–antibody interaction.

Abbreviations

AG: ancestral group; FA: formaldehyde; IFA: immunofluorescence assay; MOI: multiplicity of infection; PBS: phosphate-buffered saline; PCR: polymerase chain reaction; PFA: paraformaldehyde; PFA + CB: paraformaldehyde in cytoskeletal buffer; PFA-PHEM: paraformaldehyde in PHEM buffer; PHEM buffer: containing PIPES, HEPES, EGTA and MgCl₂; SFG: spotted fever group; TG: typhus group; TRG: transitional group.

Acknowledgements

The authors thank the Renáta Szalayová for her enthusiastic participation and professional technical assistance.

Authors' contributions

MD designed and performed the experiments. MD and ZS wrote the manuscript. LC and PEF analysed data and revised the manuscript. ZS coordinated the study. All authors read and approved the final manuscript.

Funding

This study was financially supported by the projects: VEGA 2/0010/19 from the Scientific Grant Agency of Ministry of Education, Science, Research and Sport, as well as SRDA-0280-12 (the study design, data collection and analysis), and SRDA SK-FR-2017-0005 from the Slovak Research and Development Agency, and the French National Research Agency under the program "investissements d'avenir", reference ANR-10-IAHU-03 (interpretation of data, decision to publish and preparation of the manuscript).

Availability of data and materials

The datasets used and analysed during the current study are available from the corresponding author on reasonable request.

Ethics approval and consent to participate

The usage of animals in the experiment was approved by the Ethical Committee of the Biomedical Research Center, Slovak Academy of Sciences and the State Veterinary and Food Administration of the Slovak Republic (Permit Number: SK U 01016 292/16-221j). The experiments were performed under standard conditions in the experimental animal facility of the Biomedical Research Center, Slovak Academy of Sciences.

Consent for publication

Not applicable.

Competing interests

The authors declare that they have no competing interests.

Author details

¹ Biomedical Research Center, Slovak Academy of Sciences, Dúbravská cesta 9, 845 05 Bratislava, Slovakia. ² UMR VITROME, AMU, IRD SSA, AP-HM, IHU Mediterranee Infection, Marseille, France.

Received: 23 July 2019 Accepted: 3 October 2019

Published online: 16 October 2019

References

1. Ammerman NC, Beier-Sexton M, Azad AF. Laboratory maintenance of *Rickettsia rickettsii*. *Curr Protoc Microbiol*. 2008. <https://doi.org/10.1002/9780471729259.mc03a05s11>.
2. Azad AF, Beard CB. Rickettsial pathogens and their arthropod vectors. *Emerg Infect Dis*. 1998;4(2):179–86.
3. Baldrige GD, Burkhardt N, Herron MJ, Kurtti TJ, Munderloh UG. Analysis of fluorescent protein expression in transformants of *Rickettsia monacensis*, an obligate intracellular tick symbiont. *Appl Environ Microbiol*. 2005;71(4):2095–105.
4. Balraj P, El KK, Vestris G, Espinosa L, Raoult D, Renesto P. RickA expression is not sufficient to promote actin-based motility of *Rickettsia raoultii*. *PLoS ONE*. 2008;3(7):e2582.
5. Boháčsova M, Filipčík P, Opattova A, Valarikova J, Quevedo DM, Skultety L, Novak M, Sekeyova Z. Survival of rat cerebrocortical neurons after rickettsial infection. *Microbes Infect*. 2015;17(11–12):845–9.
6. Fritschy JM, Härtig W. Indirect immunofluorescence of cultured cells. *New York: Wiley*; 2001.
7. Fujiwara K. Techniques for localizing contractile proteins with fluorescent antibodies. *Curr Top Dev Biol*. 1980;14(Pt 2):271–96.
8. Gillespie JJ, Beier MS, Rahman MS, Ammerman NC, Shallom JM, Purkayastha A, Sobral BS, Azad AF. Plasmids and rickettsial evolution: insight from *Rickettsia felis*. *PLoS ONE*. 2007;2(3):e266.
9. Goldberg MB. Actin-based motility of intracellular microbial pathogens. *Microbiol Mol Biol Rev*. 2001;65(4):595–626.
10. Gouin E, Gantelet H, Egile C, Lasa I, Ohayon H, Villiers V, Sansonetti PJ, Cossart P. A comparative study of the actin-based motilities of the pathogenic bacteria *Listeria monocytogenes*, *Shigella flexneri* and *Rickettsia conorii*. *J Cell Sci*. 1999;112(Pt 11):1697–708.
11. Heinzen RA. Rickettsial actin-based motility: behavior and involvement of cytoskeletal regulators. *Ann N Y Acad Sci*. 2003;990:535–47.
12. Heinzen RA, Hayes SF, Peacock MG, Hackstadt T. Directional actin polymerization associated with spotted fever group Rickettsia infection of vero cells. *Infect Immun*. 1993;61(5):1926–35.
13. Heymann WR. Rickettsial microbiology. *Clin Dermatol*. 1996;14(3):243–4.
14. La SB, Meconi S, Fenollar F, Rolain JM, Roux V, Raoult D, et al. Emended description of *Rickettsia felis* (Bouyer et al. 2001), a temperature-dependent cultured bacterium. *Int J Syst Evol Microbiol*. 2002;52(Pt 6):2035–41.
15. Levin PA. Light microscopy techniques for bacterial cell biology. *Methods in microbiology*, vol. 31. London: Academic Press Ltd.; 2002. p. 115–32.
16. Luce-Fedrow A, Mullins K, Kostik AP, St John HK, Jiang J, Richards AL. Strategies for detecting rickettsiae and diagnosing rickettsial diseases. *Future Microbiol*. 2015;10(4):537–64.
17. McCaffery JM, Farquhar MG. Localization of GTPases by indirect immunofluorescence and immunoelectron microscopy. *Methods Enzymol*. 1995;257:259–79.
18. Merhej V, Angelakis E, Socolovschi C, Raoult D. Genotyping, evolution and epidemiological findings of *Rickettsia* species. *Infect Genet Evol*. 2014;25:122–37.
19. Olano JP. Rickettsial infections. *Ann N Y Acad Sci*. 2005;1063:187–96.
20. Perlman SJ, Hunter MS, Zchori-Fein E. The emerging diversity of *Rickettsia*. *Proc Biol Sci*. 2006;273(1598):2097–106.
21. Robinson RW, Snyder JA. An innovative fixative for cytoskeletal components allows high resolution in colocalization studies using immunofluorescence techniques. *Histochem Cell Biol*. 2004;122(1):1–5.
22. Schliwa M, van Blerkom J. Structural interaction of cytoskeletal components. *J Cell Biol*. 1981;90(1):222–35.
23. Sekeyova Z, Roux V, Xu W, Rehacek J, Raoult D. *Rickettsia slovaca* sp. nov., a member of the spotted fever group rickettsiae. *Int J Syst Bacteriol*. 1998;48(Pt 4):1455–62.

24. Small JV, Rinnerthaler G, Hinssen H. Organization of actin meshworks in cultured cells: the leading edge. *Cold Spring Harb Symp Quant Biol.* 1982;46(Pt 2):599–611.
25. Sobue K, Fujio Y, Kanda K. Tumor promoter induces reorganization of actin filaments and caldesmon (fodrin or nonerythroid spectrin) in 3T3 cells. *Proc Natl Acad Sci USA.* 1988;85(2):482–6.
26. Spitalska E, Stefanidesova K, Kocianova E, Boldis V. *Rickettsia slovaca* and *Rickettsia raoultii* in *Dermacentor marginatus* and *Dermacentor reticulatus* ticks from Slovak Republic. *Exp Appl Acarol.* 2012;57(2):189–97.
27. Teyseire N, Chiche-Portiche C, Raoult D. Intracellular movements of *Rickettsia conorii* and *R. typhi* based on actin polymerization. *Res Microbiol.* 1992;143(9):821–9.
28. Van Kirk LS, Hayes SF, Heinzen RA. Ultrastructure of *Rickettsia rickettsii* actin tails and localization of cytoskeletal proteins. *Infect Immun.* 2000;68(8):4706–13.
29. Weiss E, Coolbaugh JC, Williams JC. Separation of viable *Rickettsia typhi* from yolk sac and L cell host components by renografin density gradient centrifugation. *Appl Microbiol.* 1975;30(3):456–63.
30. Wheatley SP, Wang YL. Indirect immunofluorescence microscopy in cultured cells. *Methods Cell Biol.* 1998;57:313–32.

Publisher's Note

Springer Nature remains neutral with regard to jurisdictional claims in published maps and institutional affiliations.

Ready to submit your research? Choose BMC and benefit from:

- fast, convenient online submission
- thorough peer review by experienced researchers in your field
- rapid publication on acceptance
- support for research data, including large and complex data types
- gold Open Access which fosters wider collaboration and increased citations
- maximum visibility for your research: over 100M website views per year

At BMC, research is always in progress.

Learn more biomedcentral.com/submissions

