



**HAL**  
open science

# Structural basis for C<sub>4</sub> photosynthesis without Kranz anatomy in leaves of the submerged freshwater plant *Ottelia alismoides*

Shijuan Han, Stephen C. Maberly, Brigitte Gontero, Zhenfei Xing, Wei Li, Hongsheng Jiang, Wenmin Huang

► **To cite this version:**

Shijuan Han, Stephen C. Maberly, Brigitte Gontero, Zhenfei Xing, Wei Li, et al.. Structural basis for C<sub>4</sub> photosynthesis without Kranz anatomy in leaves of the submerged freshwater plant *Ottelia alismoides*. *Annals of Botany*, 2020, 125 (6), pp.869-879. 10.1093/aob/mcaa005 . hal-02572396

**HAL Id: hal-02572396**

**<https://amu.hal.science/hal-02572396>**

Submitted on 13 May 2020

**HAL** is a multi-disciplinary open access archive for the deposit and dissemination of scientific research documents, whether they are published or not. The documents may come from teaching and research institutions in France or abroad, or from public or private research centers.

L'archive ouverte pluridisciplinaire **HAL**, est destinée au dépôt et à la diffusion de documents scientifiques de niveau recherche, publiés ou non, émanant des établissements d'enseignement et de recherche français ou étrangers, des laboratoires publics ou privés.

2 **Structural basis for C<sub>4</sub> photosynthesis without Kranz**  
3 **anatomy in leaves of the submerged freshwater plant *Ottelia***  
4 ***alismoides***

5 **Shijuan Han<sup>1,2</sup>, Stephen C. Maberly<sup>3</sup>, Brigitte Gontero<sup>4</sup>, Zhenfei Xing<sup>5</sup>, Wei Li<sup>1,6</sup>,**  
6 **Hongsheng Jiang<sup>1</sup>, Wenmin Huang<sup>1,4,\*</sup>**

7 <sup>1</sup>Key Laboratory of Aquatic Botany and Watershed Ecology, Wuhan Botanical  
8 Garden, Chinese Academy of Sciences, Wuhan 430074, China

9 <sup>2</sup>University of Chinese Academy of Sciences, Beijing 100049, China

10 <sup>3</sup>Lake Ecosystems Group, Centre for Ecology & Hydrology, Lancaster Environment  
11 Centre, Library Avenue, Bailrigg, Lancaster LA1 4AP, UK

12 <sup>4</sup>Aix Marseille Univ CNRS, BIP UMR 7281, IMM, FR 3479, 31 Chemin Joseph  
13 Aiguier, 13402 Marseille Cedex 20, France

14 <sup>5</sup>Institute of Hydrobiology, Chinese Academy of Sciences, Wuhan 430072, China

15 <sup>6</sup>Center for Plant Ecology, Core Botanical Gardens, Chinese Academy of Sciences,  
16 Wuhan 430074, China

17  
18 **Running title:** Leaf structure in *Ottelia alismoides*

19 \* **Correspondence:** [huangwm@wbcas.cn](mailto:huangwm@wbcas.cn)  
20

21

22

23

24

## ABSTRACT

1

2 • **Background and Aims** *Ottelia alismoides* (Hydrocharitaceae) is a freshwater  
3 macrophyte that, unusually, possesses three kinds of carbon dioxide-concentrating  
4 mechanisms. Here we describe its leaf anatomy and chloroplast ultrastructure, how  
5 they are altered by CO<sub>2</sub> concentration and may underlie C<sub>4</sub> photosynthesis.

6 • **Methods** Light and transmission electron microscopy were used to study the  
7 anatomy of mature leaves of *O. alismoides* grown at high and low CO<sub>2</sub> concentrations.  
8 Diel acid change and the activity of PEP carboxylase were measured to confirm that  
9 CAM activity and C<sub>4</sub> photosynthesis were present.

10 • **Key Results** When *O. alismoides* was grown at low CO<sub>2</sub> the leaves performed both  
11 C<sub>4</sub> and CAM photosynthesis whereas with high CO<sub>2</sub> leaves used C<sub>4</sub> photosynthesis.  
12 The leaf comprised an upper and lower layer of epidermal cells separated by a large  
13 air space occupying about 22% of the leaf transverse-section area, and by mesophyll  
14 cells connecting the two epidermal layers. Kranz anatomy was absent. At low CO<sub>2</sub>,  
15 chloroplasts in the mesophyll cells were filled with starch even at the start of the  
16 photoperiod, while epidermal chloroplasts had small starch grains. The number of  
17 chloroplasts in the epidermis was greater than in the mesophyll cells. At high CO<sub>2</sub>, the  
18 structure was unchanged but the thickness of the two epidermal layers, the air space,  
19 mesophyll and the transverse-section area of cells and air space were greater.

20 • **Conclusions** Leaves of *O. alismoides* have epidermal and mesophyll cells that  
21 contain chloroplasts and large air spaces but lack Kranz anatomy. The high starch  
22 content of mesophyll cells suggests they may benefit from an internal source of CO<sub>2</sub>,  
23 for example via C<sub>4</sub> metabolism, and are also sites of starch storage. The air spaces  
24 may help in the recycling of decarboxylated or respired CO<sub>2</sub>. The structural similarity  
25 of leaves from low and high CO<sub>2</sub> is consistent with the constitutive nature of

1 bicarbonate and C<sub>4</sub> photosynthesis. There is sufficient structural diversity within the  
2 leaf of *O. alismoides* to support dual-cell C<sub>4</sub> photosynthesis even though Kranz  
3 anatomy is absent.

4

5

6

7 **Key words:** aerenchyma, bicarbonate use, CAM, CO<sub>2</sub> acclimation, CO<sub>2</sub>-  
8 concentrating mechanism (CCM), chloroplast ultrastructure, freshwater macrophyte,  
9 Hydrocharitaceae

10

1

2

## INTRODUCTION

3 In their evolution from terrestrial ancestors, freshwater plants have traded-off  
4 problems of water shortage for problems of carbon-shortage (Maberly and Gontero,  
5 2018). Carbon-shortage is mainly caused by low rates of CO<sub>2</sub> diffusion across  
6 boundary layers surrounding aquatic leaves (Black et al., 1981). Additionally,  
7 especially in productive lakes, generation of CO<sub>2</sub> concentrations below air-  
8 equilibrium and, oxygen concentrations above air-equilibrium, can together stimulate  
9 photorespiration (Maberly, 1996; Sand-Jensen et al., 2019). In response to the absence  
10 of water shortage and the presence of carbon limitation, the leaves of submerged  
11 freshwater plants have thin cuticles, lack stomata and sub-stomatal spaces and have  
12 chloroplasts in epidermal cells (Sculthorpe, 1967). Laminar leaves are generally thin  
13 with a high specific leaf area (Enríquez et al., 1996; Poorter et al., 2009) and the  
14 lamina often comprises only two or three cell layers (Maberly and Gontero, 2018).  
15 Aerenchyma is a common feature of aquatic plants (Sculthorpe, 1967) and is present  
16 in the roots, leaves and stems of most aquatic species (Silveira et al., 2016).

17 In addition to these structural changes, freshwater macrophytes employ a  
18 number of avoidance, exploitation and amelioration strategies to overcome carbon  
19 limitation (Klavnsen et al., 2011). Amelioration strategies involve active CO<sub>2</sub>-  
20 concentrating mechanisms (CCMs) that increase CO<sub>2</sub> around the primary carboxylase,  
21 ribulose-1,5-bisphosphate carboxylase/oxygenase (Rubisco). There are three known  
22 CCMs in freshwater macrophytes: of the species investigated, about half have the  
23 ability to use HCO<sub>3</sub><sup>-</sup>, 8% have CAM and 4% have C<sub>4</sub> (Maberly and Gontero, 2017;  
24 Iversen et al., 2019). Bicarbonate is the dominant form of inorganic carbon when pH

1 is between about 6.3 and 10.1 and even when CO<sub>2</sub> becomes depleted as pH increases,  
2 bicarbonate can be present at appreciable concentrations. C<sub>4</sub> photosynthesis and CAM  
3 depend on temporary fixation of bicarbonate by phosphoenolpyruvate carboxylase  
4 (PEPC) to form a C<sub>4</sub> compound that is subsequently decarboxylated, raising the CO<sub>2</sub>  
5 concentration around the active site of Rubisco (Keeley, 1981; Bowes et al., 2002).  
6 The carboxylation and decarboxylation processes are separated spatially in C<sub>4</sub>  
7 photosynthesis and temporally in CAM. C<sub>4</sub> photosynthesis reduces photorespiration  
8 during the day in aquatic and terrestrial plants. In addition, CAM can reduce the loss  
9 of carbon from dark respiration and extend the duration of carbon uptake to the night  
10 (Maberly and Madsen, 2002; Pedersen et al., 2011).

11 Function and structure are often closely associated (Smith et al., 2012). In  
12 freshwater macrophytes, use of bicarbonate can be associated with polar leaves with  
13 high pH produced at the adaxial/upper surface and low pH at the abaxial/lower  
14 surface (Steemann Nielsen, 1947; Prins and Elzenga, 1989). Terrestrial CAM plants  
15 have large vacuoles to store the C<sub>4</sub> compound, often in the form of malate,  
16 accumulated during the night (Nelson and Sage, 2008; Silvera et al., 2010). Terrestrial  
17 C<sub>4</sub> plants, typically have a specialised ‘Kranz anatomy’, that comprises mesophyll  
18 cells with C<sub>4</sub> photosynthesis surrounding bundle sheath cells where CO<sub>2</sub> is  
19 concentrated and assimilated by the Calvin-Benson-Bassham cycle (Sage and Monson,  
20 1999). In addition to different photosynthetic enzymes, these two types of cell also  
21 differ in starch content and chloroplast ultrastructure (Edwards et al., 2004) so that the  
22 initial carboxylation and the subsequent decarboxylation can be spatially separated in  
23 these two distinctive types of photosynthetic cell (Raghavendra and Sage, 2011; Sage,  
24 2016). However, a few terrestrial plants within the dicot Amaranthaceae family, e.g.  
25 *Bienertia cycloptera*, *Bienertia sinuspersici* and *Suaeda aralocaspica* (formerly

1 *Borszczowia aralocaspica*), operate C<sub>4</sub> photosynthesis through the spatial separation  
2 of dimorphic chloroplasts within a single cell (Voznesenskaya et al., 2001;  
3 Voznesenskaya et al., 2002; Voznesenskaya et al., 2003; Edwards et al., 2004; Akhani  
4 et al., 2005).

5 C<sub>4</sub> photosynthesis is also present in freshwater plants from the monocot  
6 Hydrocharitaceae family: *Egeria densa*, *Ottelia alismoides* and *Ottelia acuminata*  
7 (Casati et al., 2000; Lara et al., 2002; Zhang et al., 2014), as well as in the well-  
8 studied species *Hydrilla verticillata*, where it takes place within a single cell (Bowes  
9 and Salvucci, 1989; Bowes, 2011). In *E. densa* and *H. verticillata*, C<sub>4</sub> photosynthesis  
10 is induced by carbon limitation whereas in *O. alismoides* it is present in mature leaves  
11 regardless of the CO<sub>2</sub> concentration (Zhang et al., 2014; Shao et al., 2017; Huang et  
12 al., 2018). In contrast, the CAM activity of *O. alismoides* is facultative and is induced  
13 at low CO<sub>2</sub> but absent at high CO<sub>2</sub> (Zhang et al., 2014). In addition, *O. alismoides* has  
14 a constitutive ability to use bicarbonate and is the only plant known to have three  
15 different CCMs (Zhang et al., 2014; Shao et al., 2017; Huang et al., 2018).

16 In terrestrial plants, elevated CO<sub>2</sub> concentrations can alter anatomical structure  
17 (Pritchard et al., 1999; Uprety et al., 2001). Leaves of freshwater plants grown in air  
18 and water can have very different morphologies and structure (Maberly and Gontero,  
19 2018). However, the anatomical response of leaves of freshwater plants to different  
20 CO<sub>2</sub> concentrations has not been studied. Since *O. alismoides* is the only known  
21 species with three kinds of CCMs, we hypothesized that its leaf anatomy and  
22 chloroplast ultrastructure might be peculiar and reflect the integration of these three  
23 different processes and that they might be affected by CO<sub>2</sub> concentration.

24

## MATERIALS AND METHODS

### 2 Plant material

3 On 22 March 2018, seeds of *O. alismoides* were sown in plastic pots (11 cm in  
4 diameter and 7 cm deep) containing sterile soil from nearby Donghu Lake and  
5 covered with 2 cm of sterile tap water. The chemical composition of the tap water was  
6 analyzed. The concentrations of total nitrogen (TN) and total phosphorus (TP) were  
7 determined spectrophotometrically after digestion with  $K_2S_2O_8$  (Huang et al., 1999).  
8 The concentrations of  $Na^+$ ,  $K^+$ ,  $Ca^{2+}$  and  $Mg^{2+}$  were determined using optical emission  
9 spectrometry (ICP-OES) Optima 8000DV (Perkin Elmer, MA, USA) after addition of  
10 200  $\mu$ L  $HNO_3$  to 10 mL tap water. The concentrations of  $Cl^-$ ,  $SO_4^{2-}$  and  $NO_3^-$  were  
11 measured using Dionex ICS-5000<sup>+</sup> HPIC system (Thermo Fisher Scientific, MA,  
12 USA). The composition is shown in Supplementary Data Table S1.

13 The pots were placed in a plant growth chamber at 28 °C, 12/12 hours  
14 photoperiod (150  $\mu$ mol photon  $m^{-2} s^{-1}$ , photosynthetically active radiation). The water  
15 level was increased as the seedlings grew to keep them submerged. When the  
16 seedlings were about 4 cm tall, the pots were placed in 1 L glass beakers in the growth  
17 chamber. After 40 days, three to five seedlings (~8 cm tall) were transplanted into  
18 another plastic pot (15 cm diameter, 12 cm deep) containing the sterile soil. These  
19 containers were placed in a 400 L tank (64 cm deep) located in a glasshouse receiving  
20 natural daylight. The tap water in the tank was changed weekly and snails were  
21 removed daily.

22

### 23 Response of mature *O. alismoides* leaves to different $CO_2$ concentrations



1 In August 2018, when the plants had produced many broad, oval-shaped mature  
2 leaves, one pot was placed in each of eight white plastic buckets ( $25 \times 25 \times 35$  cm).  
3 These were filled with tap water and placed in the rooftop tanks, surrounded by water  
4 to keep the water temperature consistent among all the buckets, but the solution in  
5 each bucket was independent from the others. High and low CO<sub>2</sub> concentrations were  
6 produced using the method described in Shao et al. (2017) with four replicates of each  
7 treatment. The water in the buckets was changed twice during the 40-days acclimation.  
8 Low CO<sub>2</sub> (LC) was produced by allowing plant photosynthesis to deplete inorganic  
9 carbon and increase pH while high CO<sub>2</sub> (HC) was produced by adding a CO<sub>2</sub> solution  
10 to produce a set pH twice each day. In the morning (between 08:00 and 09:00) and  
11 afternoon (between 17:30 to 19:00), the water was gently stirred to thoroughly mix it  
12 and pH was measured with a pH electrode and temperature was measured with a  
13 thermometer. Alkalinity was measured every two days by Gran titration (Shao et al.,  
14 2017). On each sampling occasion, CO<sub>2</sub>-saturated tap water was added to the HC  
15 treatment, to bring the pH to 6.8. Concentrations of CO<sub>2</sub> were calculated from pH,  
16 alkalinity and temperature (Maberly, 1996). In the LC treatment, the pH increased  
17 from 8.0 to over 9.8 and the CO<sub>2</sub> concentration varied between 0.1 and 13  $\mu\text{mol L}^{-1}$   
18 with a mean of 2.4  $\mu\text{mol L}^{-1}$ . In the HC treatment, the pH varied between 6.6 and 6.9,  
19 producing CO<sub>2</sub> concentrations between 481  $\mu\text{mol L}^{-1}$  and 1110  $\mu\text{mol L}^{-1}$  with a mean  
20 of 720  $\mu\text{mol L}^{-1}$ . Water temperature ranged between 25 and 35 °C with a mean of 30  
21 °C. As a reference, the CO<sub>2</sub> concentration in equilibrium with 400 ppm atmospheric  
22 CO<sub>2</sub> will be about 14  $\mu\text{mol L}^{-1}$  at 30 °C. Changes in CO<sub>2</sub> concentration in the two  
23 treatments are shown in Supplementary Data Fig. S1. After 40-days acclimation to LC  
24 and HC treatments, fully expanded mature leaves that had been produced during the

1 experiment and appeared to be of similar age were sampled for structure and  
2 physiology studies.

3

#### 4 **Light Microscopy and Transmission Electron Microscopy**

5 Leaf segments (3 mm × 3 mm) sampled at 0500 and 1800 were fixed overnight in  
6 2.5% glutaraldehyde in 0.1 M phosphate buffer (pH 7.4) at 4°C and post-fixed in 1%  
7 OsO<sub>4</sub> at 4°C for 2.5 h (Farnese et al., 2017). They were dehydrated using a stepwise  
8 ethanol series (30, 50, 70, 90 and 100%) and processed with a mixed solution of  
9 ethanol and acetone, then infiltrated in a mixture of acetone and epoxy resin (1: 1 for  
10 1 h, and then 1: 2 for 8 h) and finally embedded using SPI-PON 812 at 60°C for 48 h.  
11 Semi-thin sections (1.5 µm) and ultrathin sections (72 nm) were obtained on a Leica  
12 EM UC7 ultramicrotome. Semi-thin sections were stained with methylene blue and  
13 observed using a Motic BA310 digital light microscope. Quantitative characteristics  
14 of leaf structures were measured using the Motic Images Plus 2.0 ML software. For  
15 the ultrathin sections, after staining with uranyl acetate and lead citrate, they were  
16 observed and photographed with a HT7700 transmission electron microscope (Hitachi  
17 High-Tech, Japan). Leaf chloroplasts and starch grains in electron micrograph were  
18 measured using Image J software. The distribution of chloroplasts in cells was  
19 assessed by measuring the number of chloroplasts per unit length of cell wall at  
20 different locations from the semi-thin sections under the light microscope, including  
21 the upper epidermis next to water, the upper epidermis next to air space, the upper  
22 mesophyll cells, the lower mesophyll cells, the lower epidermis next to air space and  
23 the lower epidermis next to water.

1

## 2 **Enzyme activity measurement**

3 Mature leaves were collected at 0500 and 1800 using the extraction and assay  
4 protocols for Rubisco and PEPC activities as described previously (Zhang et al., 2014;  
5 Shao et al., 2017; Huang et al., 2018). Enzyme activities were calculated from the rate  
6 of disappearance of NADH at 340 nm and 25°C measured with a microplate reader  
7 (Tecan M200 PRO, Austria).

8

## 9 **CAM activity measurement**

10 CAM activity was assessed by calculating the daily change in titratable acidity, in  
11 leaves harvested at 0500 and 1800 as previously described (Zhang et al., 2014).  
12 Briefly, to measure leaf acid content, 10 mL CO<sub>2</sub>-free deionized water were added to  
13 the leaf samples of known fresh weight (0.2 ~ 0.5 g) and then boiled for 30 min. The  
14 acidity was titrated to pH 8.3 using 0.01 N NaOH.

15

## 16 **Statistical analysis**

17 SPSS 20 (SPSS Inc., Chicago, IL, USA) was used to analyze the data. An  
18 independent sample t-test was used for two groups of data with normal distribution,  
19 the Mann-Whitney U-test was used for two groups of data where the distribution was  
20 not normal and the Kruskal-Wallis test was used for three or more groups of data  
21 where the distribution was not normal. The significance level of the statistics was  
22 accepted at  $P < 0.05$ .

1

2

## RESULTS

### 3 **C<sub>4</sub> photosynthesis and CAM activity**

4 The enzyme activities of PEPC and Rubisco in mature leaves under HC and LC  
5 treatments were measured to confirm that C<sub>4</sub> photosynthesis was present. There was  
6 no significant difference in PEPC activities between leaves collected at dusk and  
7 dawn regardless of the treatments, but the PEPC activities were significantly higher in  
8 leaves grown at a low versus a high concentration of CO<sub>2</sub> (Fig. 1A). Rubisco activity  
9 was significantly lower in leaves collected at dawn versus dusk, but was not affected  
10 by CO<sub>2</sub> concentration (Fig. 1B). The ratio of PEPC to Rubisco was between 1.6 and  
11 4.2 (Fig. 1C) within a range typical of terrestrial C<sub>4</sub> plants (Zhang et al., 2014). This  
12 ratio was significantly higher at low than at high CO<sub>2</sub> both at dawn and dusk. At dawn,  
13 the ratio was about 2.6-fold higher in low compared to high CO<sub>2</sub> leaves suggesting  
14 that leaves from low CO<sub>2</sub> had more active C<sub>4</sub> photosynthesis than those from high  
15 CO<sub>2</sub>. Leaves at low CO<sub>2</sub> had a marked diel change in acidity that was significantly  
16 higher (58 µequiv g<sup>-1</sup> FW) than at high CO<sub>2</sub> concentrations (19 µequiv g<sup>-1</sup> FW, Fig.  
17 2). These results confirm that these mature *O. alismoides* leaves perform both C<sub>4</sub>  
18 photosynthesis and CAM when acclimated to low CO<sub>2</sub> and C<sub>4</sub> photosynthesis at high  
19 CO<sub>2</sub>.

20

### 21 **Effects of CO<sub>2</sub> concentration on leaf anatomy**

22 Transverse sections showed that there were no major differences in basic structure  
23 and types of cell in leaves grown at high and low concentrations of CO<sub>2</sub> (Fig. 3).

1 Leaves from both treatments comprised an upper and lower layer of epidermal cells  
2 separated by a large air space and between one and three but most often two stacked  
3 mesophyll cells connecting the two epidermal layers. In transverse section, the  
4 epidermal cells varied in shape between rectangular and elliptical while the mesophyll  
5 cells were less elongated (Fig. 3B, E). Parenchymal cells containing some  
6 chloroplasts occurred around the vascular bundle, the bundle sheath, but this was not  
7 surrounded by mesophyll cells and thus Kranz anatomy was absent (Fig. 3C, F).

8 Leaf width was significantly greater at high (8.56 (mean) cm  $\pm$  0.50 (SD))  
9 compared to low CO<sub>2</sub> concentration (5.44 cm  $\pm$  0.18), but leaf length was unaltered at  
10 ~12 cm (Table 1). Consequently, the length to width ratio was greater at low CO<sub>2</sub>.  
11 The leaves of *O. alismoides* were thicker at high than at low CO<sub>2</sub> concentration (Fig.  
12 3, Table 1). The ratio of air space area to leaf area in transverse section was 0.22 to  
13 0.23 but was not affected significantly by CO<sub>2</sub> concentration (Table 1). The air spaces  
14 were bounded top and bottom by the epidermal cells and surrounded at the sides by a  
15 network of mesophyll cells and so were not connected to one another (see also  
16 Supplementary Data Fig. S2).

17 The epidermis and mesophyll of plants grown at high CO<sub>2</sub> concentration were  
18 significantly thicker and of greater cell area than in plants grown at low CO<sub>2</sub>  
19 concentration (Fig. 4). Furthermore, the upper epidermis was thicker than the lower  
20 epidermis, both at low and high CO<sub>2</sub> ( $P < 0.001$ ), but the area was not different. The  
21 thickness and area of an air space were correspondingly greater at high CO<sub>2</sub>  
22 concentration.

23

24 **Effects of CO<sub>2</sub> concentration on chloroplasts**

1 Chloroplasts were present in epidermal and mesophyll cells (Fig. 3). Since  
2 chloroplasts can differ in cells carrying out different processes, such as in C<sub>4</sub>  
3 photosynthesis, we characterized chloroplast size, shape and ultrastructure in leaves  
4 grown at high and low CO<sub>2</sub>. In leaves grown at high CO<sub>2</sub>, the chloroplasts in  
5 epidermis and mesophyll cells were all nearly spherical with large starch grains (Fig.  
6 5A, C, D, E), which occupied ~65 and ~80% of the chloroplast area both at dusk and  
7 dawn (Fig. 6E & F). In contrast, in leaves grown at low CO<sub>2</sub>, epidermal chloroplasts  
8 were spindle-shaped (Fig. 5F), while the mesophyll chloroplasts were spherical (Fig.  
9 5I) and consequently, their minor axis length was shorter (Fig. 6B). In the leaves  
10 collected at dusk, starch occupied 40% and 64% of the chloroplast area in the  
11 epidermal and the mesophyll cells, respectively (Fig. 6E). The same trend was also  
12 observed in the leaves sampled at dawn (Fig. 6F), small and large starch grains were  
13 distributed in the chloroplasts of the epidermal and mesophyll cells, respectively (Fig.  
14 5H & J). Grana with many thylakoids were clearly visible in epidermal chloroplasts  
15 (Fig. 5B & G) whereas in mesophyll chloroplasts, the grana thylakoids were indistinct  
16 because of the high starch content.

17         The average area of a chloroplast was greater in leaves grown at high versus  
18 low CO<sub>2</sub> in both types of cell (Fig. 6C). The area of a chloroplast was greater in  
19 mesophyll than in epidermal cells for both CO<sub>2</sub> treatments. At high CO<sub>2</sub>, the number  
20 of mitochondria within 1 μm around a chloroplast in mesophyll and epidermal cells  
21 was not significantly different (Fig. 6D). However, at low CO<sub>2</sub>, the number of  
22 mitochondria around chloroplasts in mesophyll cells was significantly higher than in  
23 the epidermal cells.

1           The distribution of chloroplasts in epidermal and mesophyll cells was  
2 measured under different CO<sub>2</sub> concentrations (Fig. 7). The frequency of chloroplasts  
3 in the upper and lower epidermis was significantly greater than in the mesophyll cells.  
4 The chloroplast frequency at the cell walls next to air spaces in the lower epidermis  
5 was less than the equivalent location in the upper epidermis, at high and low CO<sub>2</sub>. The  
6 frequency of chloroplasts at the upper epidermis next to an air space was significantly  
7 lower in leaves acclimated to low compared to high CO<sub>2</sub>.

8

9

## DISCUSSION

### 10 **Adaptation to photosynthesis underwater**

11 The presence of chloroplasts in epidermal cells is a common feature in submerged  
12 angiosperms, but rare in their terrestrial ancestors (Sculthorpe, 1967; Rascio, 2002;  
13 Maberly and Gontero, 2018). Mature leaves of *O. alismoides* have two types of  
14 photosynthetic cell, epidermal and mesophyll. In contrast, leaves from three other  
15 species of Hydrocharitaceae, *H. verticillata*, *E. densa* and *Elodea callitrichoides*, only  
16 have two layers of epidermal cells and no mesophyll cells (Falk and Sitte, 1963;  
17 Pendland, 1979; Hara et al., 2015). As a consequence, the leaf thickness of *O.*  
18 *alismoides*, especially in the leaves grown at high CO<sub>2</sub>, at 196 µm, is much greater  
19 than the median (95 µm) for submerged leaves from a range of freshwater  
20 macrophytes (Maberly and Gontero, 2018) and greater than *E. callitrichoides* and *E.*  
21 *densa* estimated from published images to be about 65 µm. While Black et al. (1981)  
22 estimated that the internal resistance to diffusion of CO<sub>2</sub> within the relatively thin  
23 leaves of four *Potamogeton* species (48 to 63 µm) was only 3 to 4% of the total, the  
24 internal resistance in the thicker leaves of *O. alismoides* could be greater but could be

1 offset by the high porosity (ratio of air space to transverse sectional leaf area, 0.22 to  
2 0.23). In *O. alismoides*, the sizes of the upper and lower epidermal cells are similar  
3 while in *H. verticillata*, the upper epidermal cells are noticeably larger than the lower  
4 cells (Pendland, 1979). In *E. callitrichoides* the transverse sectional area of the upper  
5 epidermal cells is about four-times that of the lower epidermis (Falk and Sitte, 1963),  
6 assuming the orientation in Fig. 1 in Falk and Sitte (1963) is correct since the adaxial  
7 and abaxial layers are not specifically labelled. Similarly, in *E. densa*, the transverse  
8 sectional area of the upper epidermal cells is about five-times larger than that of the  
9 lower epidermal cells (Hara et al., 2015). The functional significance of these  
10 differences is currently unknown but they could be linked to the use of bicarbonate  
11 involving different processes in upper and lower cell layers (Steemann Nielsen, 1947;  
12 Prins and Elzenga, 1989).

13 Well-developed aerenchyma is a common feature of aquatic plants (Jung et al.,  
14 2008). *O. alismoides* contains large air spaces between the epidermal layers while in  
15 *H. verticillata* and *E. callitrichoides*, there are numerous small intercellular spaces  
16 between the upper and lower epidermal cells that comprise a small proportion of the  
17 leaf volume (Falk and Sitte, 1963; Pendland, 1979). In many isoetids, the aerenchyma  
18 is a large proportion of the leaf volume and is continuous from the roots to the leaves,  
19 allowing sedimentary CO<sub>2</sub> to be taken up and fixed (Madsen et al., 2002) and oxygen  
20 to be supplied to the roots (Sand-Jensen and Prahl, 1982). Since in *O. alismoides* the  
21 air spaces are discrete (Supplementary Data Fig. S2), and so not connected to the  
22 roots, these two processes are unlikely to occur. Air spaces comprise about 22 to 23%  
23 of the transverse section leaf area in *O. alismoides*, which is within the broad range  
24 recorded for terrestrial leaves (3 - 73%, Slaton and Smith, 2002; Earles et al., 2018).  
25 In terrestrial leaves, the intercellular air spaces are connected to the atmosphere via



1 stomata and help to maximize the mesophyll surface area in contact with atmospheric  
2 CO<sub>2</sub>. Aquatic plants generally lack functional stomata, so the air spaces within a leaf  
3 are not connected to the exterior. The air spaces provide buoyancy, allowing the  
4 leaves to float towards the surface where light is higher, but could also act as a  
5 reservoir of respiratory CO<sub>2</sub> (Wetzel et al., 1984) or photorespiratory CO<sub>2</sub>  
6 (Søndergaard and Wetzel, 1980) as can also occur in terrestrial C<sub>3</sub> plants (Busch et al.,  
7 2013). However, a calculation for low CO<sub>2</sub> leaves based on a one-sided specific leaf  
8 area of 100.5 cm<sup>2</sup> g<sup>-1</sup> FW and net rates of photosynthesis at around air-equilibrium  
9 CO<sub>2</sub> of 2 μmol g<sup>-1</sup> FW h<sup>-1</sup> (Zhang et al., 2014), air space area as a proportion of leaf  
10 area of 0.23 (this study) and maximal CO<sub>2</sub> partial pressure in the air space of 10,000  
11 ppm (Madsen, 1987) suggests that air-space CO<sub>2</sub> could only support net  
12 photosynthesis for about 5 minutes. Nevertheless, if C<sub>4</sub> decarboxylation occurs in the  
13 mesophyll cells, as seems possible given the relatively high chloroplast density in  
14 these cells in relation to their distance from external inorganic carbon sources, then  
15 the air spaces may serve to trap and recycle CO<sub>2</sub> produced by C<sub>4</sub> decarboxylation.  
16 This could be efficient as loss of CO<sub>2</sub> from the air spaces to the outside will be limited  
17 by the chloroplasts in the epidermis and the low rate of CO<sub>2</sub> exchange between the  
18 leaf and the bulk water as a result of transport limitation across the boundary layer. At  
19 25 °C the air-equilibrium molar ratio of oxygen to CO<sub>2</sub> in water is about 28-fold less  
20 than in air, so the air spaces may also provide a means to reduce the concentration of  
21 photosynthetically produced oxygen within mesophyll and epidermal cells.

22

23 **C<sub>4</sub> photosynthesis and absence of Kranz anatomy**

1 In the Hydrocharitaceae, four species are known to have constitutive or facultative C<sub>4</sub>  
2 photosynthesis, *H. verticillata*, *E. densa*, *O. acuminata* and *O. alismoides* (Bowes et  
3 al., 2002; Lara et al., 2002; Zhang et al., 2014; Yin et al., 2017) and lack Kranz  
4 anatomy. There is evidence that *H. verticillata* has single cell C<sub>4</sub> photosynthesis  
5 (Bowes et al., 2002). In this respect, it is similar to single-cell terrestrial C<sub>4</sub> plants  
6 (Voznesenskaya et al., 2001; Voznesenskaya et al., 2002) such as *B. cycloptera* and *S.*  
7 *aralocaspica* where C<sub>4</sub> production and decarboxylation occur in different parts of a  
8 cell (Edwards et al., 2004; Edwards and Voznesenskaya, 2011; Sharpe and Offermann,  
9 2014; von Caemmerer et al., 2014). In these terrestrial plants, C<sub>4</sub> decarboxylation  
10 occurs in mitochondria using NAD malic enzyme (NAD-ME). In *O. alismoides*,  
11 Zhang et al. (2014) suggested, on the basis of enzyme activity measurements, that  
12 NAD-ME is also the decarboxylating enzyme, unlike in *H. verticillata* where NADP-  
13 ME is believed to be involved (Bowes, 2011). The location of primary CO<sub>2</sub> fixation  
14 and decarboxylation in *O. alismoides*, and whether they take place in a single cell, is  
15 unknown. Here we show that the mesophyll cells of *O. alismoides* have a high starch  
16 content which is consistent with these cells either being the site of high rates of  
17 photosynthesis resulting from decarboxylation, producing CO<sub>2</sub> locally or being sites  
18 of starch storage. However, the high frequency of mitochondria around mesophyll  
19 chloroplasts in leaves acclimated to low CO<sub>2</sub> supports the possibility that these cells  
20 are the site of decarboxylation by the mitochondrial NAD-ME, as does the presence  
21 of chloroplasts in mesophyll cells despite their distance from external sources of  
22 inorganic carbon. In this dual-cell model, the *O. alismoides* epidermal cells would  
23 then perform the function of the terrestrial C<sub>4</sub> mesophyll cells by producing a C<sub>4</sub>  
24 product and the *O. alismoides* mesophyll cells would perform the function of the

1 terrestrial C<sub>4</sub> bundle sheath cells in decarboxylating the C<sub>4</sub> product. However, it is  
2 also possible that both processes could be occurring within the mesophyll cells.

3         Some C<sub>4</sub> terrestrial plants have dimorphic chloroplasts in a single cell  
4 (Voznesenskaya et al., 2001; Voznesenskaya et al., 2002; Voznesenskaya et al., 2003;  
5 Akhani et al., 2005; Sharpe and Offermann, 2014). The different forms of chloroplasts  
6 in the Kranz anatomy cells are linked to different energy requirements and fixation of  
7 carbon (Edwards et al., 2004). Dimorphic chloroplasts differing in size and  
8 ultrastructure also occur in leaves of freshwater plants. In *Cabomba caroliniana*  
9 (Cabombaceae), the chloroplasts in mesophyll cells have larger starch grains, more  
10 thylakoids per granum, and are larger than epidermal chloroplasts (Galati et al., 2015;  
11 Table 2). Species within the aquatic angiosperm family Podostemaceae also have two  
12 types of chloroplasts. Small chloroplasts with a normal grana ultrastructure and very  
13 small starch grains occur at the upper tangential walls of epidermal cells, while large  
14 chloroplasts with more thylakoids per granum and many well-developed starch grains  
15 occur at the lower tangential walls of these cells and also in mesophyll cells (Fujinami  
16 et al., 2011; Table 2). However, there is no evidence for CCMs in *C. caroliniana* (Yin  
17 et al., 2017). In the Podostemaceae, although carbon isotope values range widely  
18 between -12.8 and -38.6‰ (Ziegler and Hertel, 2007) at different locations suggesting  
19 that there could be differences in discrimination resulting from C<sub>4</sub> photosynthesis or  
20 bicarbonate use, differences in carbon isotope signature caused by the source  
21 inorganic carbon cannot be excluded so the presence or absence of CCMs in these  
22 plants is currently unknown.

23         In terrestrial C<sub>4</sub> plants, cells or parts of cells where C<sub>4</sub> fixation occurs have  
24 smaller chloroplasts with less starch than chloroplasts in cells or parts of cells where

1 decarboxylation occurs (Table 2). Chloroplasts from the epidermal cells of *O.*  
2 *alismoides* are similar to those involved in C<sub>4</sub> fixation while chloroplasts from  
3 mesophyll cells are similar to those involved in C<sub>4</sub> decarboxylation, suggesting that  
4 C<sub>4</sub> photosynthesis in this species may involve both cell types. However, although the  
5 biochemical evidence suggests that *O. alismoides* belongs to the NAD-ME sub-type  
6 of C<sub>4</sub> (Zhang et al., 2014), its pattern of thylakoids per granum in epidermal compared  
7 to mesophyll cells is closer to that of terrestrial NADP-ME C<sub>4</sub> plants, suggesting that  
8 there is not a direct ‘read-across’ between C<sub>4</sub> photosynthesis in aquatic and terrestrial  
9 plants.

## 10 **Responses to CO<sub>2</sub>**

11 To maximise plant productivity there is an intricate relationship between leaf structure  
12 and function (Oguchi et al., 2018). In terrestrial plants, where water can be limiting,  
13 there is an evolutionary pressure to maximise the ratio of carbon gain to water loss.  
14 Cell size and leaf thickness are dependent on environmental conditions (Zeiger, 1983;  
15 Jones, 1985; Radoglou and Jarvis, 1990). In *Liquidambar styraciflua*, *Pinus taeda*,  
16 and *Brassica juncea*, high CO<sub>2</sub> also has a structural effect, increasing the thickness of  
17 the upper and lower epidermis and mesophyll cell of leaves (Rogers et al., 1983;  
18 Uprety et al., 2001). Elevated CO<sub>2</sub> generally increases the size of terrestrial plants  
19 (Pritchard et al., 1999). We found the same here for the freshwater plant *O. alismoides*,  
20 suggesting that the increase of this resource has a universal effect on plant size.

21

## 22 **Conclusions**

1 *O. alismoides* has three CCMs that requires structural and functional coordination to  
2 operate efficiently. Unlike terrestrial plants, the anatomy of *O. alismoides* is relatively  
3 simple, and spongy and palisade tissues are absent, as they are in submerged leaves of  
4 all aquatic plants (Maberly and Gontero, 2018). The leaf comprises two types of  
5 photosynthetic cell, epidermal and mesophyll. The conceptual overview summarizing  
6 the structure of *O. alismoides* leaves acclimated to high CO<sub>2</sub> and low CO<sub>2</sub>  
7 concentrations is shown in Supplementary Data Fig. S3. Epidermal cells, containing  
8 chloroplasts, maximise uptake of external CO<sub>2</sub>, aided by bicarbonate use, while the  
9 mesophyll cells may be sites where CO<sub>2</sub> is concentrated by decarboxylation.  
10 Abundant discrete air spaces provide buoyancy but may also trap (photo)-respiratory  
11 CO<sub>2</sub>, or CO<sub>2</sub> produced by decarboxylation, permitting its re-fixation. Overall, there is  
12 sufficient structural diversity within the leaf of *O. alismoides* to support dual-cell C<sub>4</sub>  
13 photosynthesis even though Kranz anatomy is absent. However, further studies are  
14 needed to conclude definitively if *O. alismoides* has dual-cell C<sub>4</sub> with the mesophyll  
15 cells representing the site of decarboxylation. Work is underway to test this by  
16 locating key photosynthesis enzymes in the epidermal and mesophyll cells.

17

18

#### **SUPPLEMENTARY DATA**

19 Supplementary data consist of the following. Figure S1: Fluctuations of CO<sub>2</sub>  
20 concentration in high CO<sub>2</sub> and low CO<sub>2</sub> treatments during the 40-days acclimation.  
21 Figure S2: Photographs of the surface of a mature *O. alismoides* leaf from the low  
22 CO<sub>2</sub> treatment using a laser scanning confocal microscope. Figure S3: Conceptual  
23 overview summarizing the structure of *O. alismoides* leaves acclimated to high CO<sub>2</sub>  
24 and low CO<sub>2</sub> concentrations. Table S1: The chemical composition of the tap water  
25 used in the growth experiments.

1

2

## ACKNOWLEDGEMENTS

3 We thank Yuan Xiao for providing the TEM service and Jun Men for assistance in the  
4 chemical analysis of water (Analysis and Testing Center, Institute of Hydrobiology,  
5 Chinese Academy of Sciences). This work was supported by the Strategic Priority  
6 Research Program of the Chinese Academy of Sciences (XDB31000000), Chinese  
7 Academy of Sciences President's International Fellowship Initiative to SCM and BG  
8 (2015VBA023, 2016VBA006), and the National Scientific Foundation of China  
9 (31860101, 31970368).

10

11

12

## LITERATURE CITED

- 13 **Akhani H, Barroca J, Koteeva N, et al. 2005.** *Bienertia sinuspersici* (Chenopodiaceae): a  
14 new species from Southwest Asia and discovery of a third terrestrial C<sub>4</sub> plant without  
15 Kranz anatomy. *Systematic Botany* **30**: 290-301.
- 16 **Black MA, Maberly SC, Spence DHN. 1981.** Resistances to carbon dioxide fixation in four  
17 submerged freshwater macrophytes. *New Phytologist* **89**: 557-568.
- 18 **Bowes G. 2011.** Single-cell C<sub>4</sub> photosynthesis in aquatic plants. In: Raghavendra AS, Sage  
19 RF, eds. *C<sub>4</sub> photosynthesis and related CO<sub>2</sub> concentrating mechanisms*. Dordrecht:  
20 Springer, 63-80.
- 21 **Bowes G, Rao SK, Estavillo GM, Reiskind JB. 2002.** C<sub>4</sub> mechanisms in aquatic  
22 angiosperms: comparisons with terrestrial C<sub>4</sub> systems. *Functional Plant Biology* **29**:  
23 379-392.

- 1 **Bowes G, Salvucci ME. 1989.** Plasticity in the photosynthetic carbon metabolism of  
2 submersed aquatic macrophytes. *Aquatic Botany* **34**: 233-266.
- 3 **Busch FA, Sage TL, Cousins AB, Sage RF. 2013.** C<sub>3</sub> plants enhance rates of photosynthesis  
4 by reassimilating photorespired and respired CO<sub>2</sub>. *Plant, Cell & Environment* **36**:  
5 200-212.
- 6 **Casati P, Lara MV, Andreo CS. 2000.** Induction of a C<sub>4</sub>-like mechanism of CO<sub>2</sub> fixation in  
7 *Egeria densa*, a submersed aquatic species. *Plant Physiology* **123**: 1611-1621.
- 8 **Earles JM, Th eroux-Rancourt G, Roddy AB, Gilbert ME, McElrone AJ, Brodersen CR.**  
9 **2018.** Beyond porosity: 3D leaf intercellular airspace traits that impact mesophyll  
10 conductance. *Plant physiology* **178**: 148-162.
- 11 **Edwards GE, Franceschi VR, Voznesenskaya EV. 2004.** Single-cell C<sub>4</sub> photosynthesis  
12 versus the dual-cell (Kranz) paradigm. *Annual Review of Plant Biology* **55**: 173-196.
- 13 **Edwards GE, Voznesenskaya EV. 2011.** C<sub>4</sub> Photosynthesis: Kranz forms and single-cell C<sub>4</sub>  
14 in terrestrial plants. In: Raghavendra AS, Sage RF, eds. *C<sub>4</sub> photosynthesis and related*  
15 *CO<sub>2</sub> concentrating mechanisms*. Dordrecht: Springer, 29-61.
- 16 **Enr iquez S, Duarte CM, Sand-Jensen K, Nielsen SL. 1996.** Broad-scale comparison of  
17 photosynthetic rates across phototrophic organisms. *Oecologia* **108**: 197-206.
- 18 **Falk H, Sitte P. 1963.** Zellfeinbau bei Plasmolyse. *Protoplasma* **57**: 290-303.
- 19 **Farnese FS, Oliveira JA, Paiva EAS, et al. 2017.** The involvement of nitric oxide in  
20 integration of plant physiological and ultrastructural adjustments in response to  
21 arsenic. *Frontiers in Plant Science* **8**: 516.
- 22 **Fujinami R, Yoshihama I, Imaichi R. 2011.** Dimorphic chloroplasts in the epidermis of  
23 Podostemoideae, a subfamily of the unique aquatic angiosperm family  
24 Podostemaceae. *Journal of Plant Research* **124**: 601-605.
- 25 **Galati BG, Gotelli MM, Rosenfeldt S, Lattar EC, Tourn GM. 2015.** Chloroplast  
26 dimorphism in leaves of *Cabomba caroliniana* (Cabombaceae). *Aquatic Botany* **121**:  
27 46-51.

- 1 **Hara T, Kobayashi E, Ohtsubo K, et al. 2015.** Organ-level analysis of idioblast patterning  
2 in *Egeria densa* Planch. leaves. *Plos One* **10**: e0118965.
- 3 **Hodge AJ, McLean JD, Mercer FV. 1955.** Ultrastructure of the lamellae and grana in the  
4 chloroplasts of *Zea mays* L. *The Journal of Biophysical and Biochemical Cytology* **1**:  
5 605-614.
- 6 **Huang WM, Shao H, Zhou SN, et al. 2018.** Different CO<sub>2</sub> acclimation strategies in juvenile  
7 and mature leaves of *Ottelia alismoides*. *Photosynthesis Research* **138**: 219-232.
- 8 **Huang XF, Chen WM, Cai QM. 1999.** *Survey, observation and analysis of lake ecology*.  
9 Beijing: Standards Press of China (in Chinese).
- 10 **Iversen LL, Winkel A, Baastrup-Spohr L, et al. 2019.** Catchment properties and the  
11 photosynthetic trait composition of freshwater plant communities. *Science* **366**: 878-  
12 881.
- 13 **Jones HG. 1985.** Adaptive significance of leaf development and structural responses to  
14 environment. In: Baker NR, Davies WJ, Ong CK, eds. *Control of leaf growth*.  
15 Cambridge: Cambridge University Press, 155-173.
- 16 **Jung J, Lee SC, Choi H-K. 2008.** Anatomical patterns of aerenchyma in aquatic and wetland  
17 plants. *Journal of Plant Biology* **51**: 428-439.
- 18 **Keeley JE. 1981.** *Isoetes howellii*: a submerged aquatic CAM plant? *American Journal of*  
19 *Botany* **68**: 420-424.
- 20 **Klavnsen SK, Madsen TV, Maberly SC. 2011.** Crassulacean acid metabolism in the context  
21 of other carbon-concentrating mechanisms in freshwater plants: a review.  
22 *Photosynthesis Research* **109**: 269-279.
- 23 **Laetsch WM. 1968.** Chloroplast specialization in dicotyledons possessing the C<sub>4</sub>-  
24 dicarboxylic acid pathway of photosynthetic CO<sub>2</sub> fixation. *American Journal of*  
25 *Botany* **55**: 875-883.
- 26 **Laetsch WM, Price I. 1969.** Development of the dimorphic chloroplasts of sugar cane.  
27 *American Journal of Botany* **56**: 77-87.



- 1 **Lara MV, Casati P, Andreo CS. 2002.** CO<sub>2</sub>-concentrating mechanisms in *Egeria densa*, a  
2 submersed aquatic plant. *Physiologia Plantarum* **115**: 487-495.
- 3 **Maberly SC. 1996.** Diel, episodic and seasonal changes in pH and concentrations of  
4 inorganic carbon in a productive lake. *Freshwater Biology* **35**: 579-598.
- 5 **Maberly SC, Gontero B. 2017.** Ecological imperatives for aquatic CO<sub>2</sub>-concentrating  
6 mechanisms. *Journal of Experimental Botany* **68**: 3797-3814.
- 7 **Maberly SC, Gontero B. 2018.** Trade-offs and synergies in the structural and functional  
8 characteristics of leaves photosynthesizing in aquatic environments. In: Adams III  
9 WW, Terashima I, eds. *The leaf: a platform for performing photosynthesis*. Cham:  
10 Springer International Publishing, 307-343.
- 11 **Maberly SC, Madsen TV. 2002.** Freshwater angiosperm carbon concentrating mechanisms:  
12 processes and patterns. *Functional Plant Biology* **29**: 393-405.
- 13 **Madsen TV. 1987.** Interactions between internal and external CO<sub>2</sub> pools in the  
14 photosynthesis of the aquatic CAM plants *Littorella uniflora* (L.) Aschers and *Isoetes*  
15 *lacustris* L. *New Phytologist* **106**: 35-50.
- 16 **Madsen TV, Olesen B, Bagger J. 2002.** Carbon acquisition and carbon dynamics by aquatic  
17 isoetids. *Aquatic Botany* **73**: 351-371.
- 18 **Nelson EA, Sage RF. 2008.** Functional constraints of CAM leaf anatomy: tight cell packing  
19 is associated with increased CAM function across a gradient of CAM expression.  
20 *Journal of Experimental Botany* **59**: 1841-1850.
- 21 **Oguchi R, Onoda Y, Terashima I, Tholen D. 2018.** Leaf anatomy and function. In: Adams  
22 III WW, Terashima I, eds. *The leaf: a platform for performing photosynthesis*. Cham:  
23 Springer International Publishing, 97-139.
- 24 **Pedersen O, Rich SM, Pulido C, Cawthray GR, Colmer TD. 2011.** Crassulacean acid  
25 metabolism enhances underwater photosynthesis and diminishes photorespiration in  
26 the aquatic plant *Isoetes australis*. *New Phytologist* **190**: 332-339.

- 1 **Pendland J. 1979.** Ultrastructural characteristics of *Hydrilla* leaf tissue. *Tissue & Cell* **11**: 79-  
2 88.
- 3 **Poorter H, Niinemets Ü, Poorter L, Wright IJ, Villar R. 2009.** Causes and consequences  
4 of variation in leaf mass per area (LMA): a meta-analysis. *New phytologist* **182**: 565-  
5 588.
- 6 **Prins HBA, Elzenga JTM. 1989.** Bicarbonate utilization: function and mechanism. *Aquatic*  
7 *Botany* **34**: 59-83.
- 8 **Pritchard SG, Rogers HH, Prior SA, Peterson CM. 1999.** Elevated CO<sub>2</sub> and plant structure:  
9 a review. *Global Change Biology* **5**: 807-837.
- 10 **P'yankov VI, Voznesenskaya EV, Kondratschuk AV, Black Jr CC. 1997.** A comparative  
11 anatomical and biochemical analysis in *Salsola* (Chenopodiaceae) species with and  
12 without a Kranz type leaf anatomy: a possible reversion of C<sub>4</sub> to C<sub>3</sub> photosynthesis.  
13 *American Journal of Botany* **84**: 597-606.
- 14 **Radoglou KM, Jarvis PG. 1990.** Effects of CO<sub>2</sub> enrichment on four poplar clones. I. Growth  
15 and leaf anatomy. *Annals of Botany* **65**: 617-626.
- 16 **Raghavendra AS, Sage RF. 2011.** Introduction. In: Raghavendra AS, Sage RF, eds. *C<sub>4</sub>*  
17 *photosynthesis and related CO<sub>2</sub> concentrating mechanisms*. Dordrecht: Springer, 17-  
18 25.
- 19 **Rascio N. 2002.** The underwater life of secondarily aquatic plants: some problems and  
20 solutions. *Critical Reviews in Plant Sciences* **21**: 401-427.
- 21 **Rogers HH, Thomas JF, Bingham GE. 1983.** Response of agronomic and forest species to  
22 elevated atmospheric carbon dioxide. *Science* **220**: 428-429.
- 23 **Sage RF. 2016.** A portrait of the C<sub>4</sub> photosynthetic family on the 50th anniversary of its  
24 discovery: species number, evolutionary lineages, and hall of fame. *Journal of*  
25 *Experimental Botany* **67**: 4039-4056.
- 26 **Sage RF, Monson RK. 1999.** *C<sub>4</sub> plant biology*. San Diego: Academic Press.

- 1 **Sand-Jensen K, Andersen MR, Martinsen KT, Borum J, Kristensen E, Kragh T. 2019.**  
2 Shallow plant-dominated lakes-extreme environmental variability, carbon cycling and  
3 ecological species challenges. *Annals of Botany* **124**: 355-366.
- 4 **Sand-Jensen K, Prah C. 1982.** Oxygen exchange with the lacunae and across leaves and  
5 roots of the submerged vascular macrophyte, *Lobelia dortmanna* L. *New Phytologist*  
6 **91**: 103-120.
- 7 **Sculthorpe CD. 1967.** *The biology of aquatic vascular plants*. London: Edward Arnold.
- 8 **Shao H, Gontero B, Maberly SC, et al. 2017.** Responses of *Ottelia alismoides*, an aquatic  
9 plant with three CCMs, to variable CO<sub>2</sub> and light. *Journal of Experimental Botany* **68**:  
10 3985-3995.
- 11 **Sharpe RM, Offermann S. 2014.** One decade after the discovery of single-cell C<sub>4</sub> species in  
12 terrestrial plants: what did we learn about the minimal requirements of C<sub>4</sub>  
13 photosynthesis? *Photosynthesis Research* **119**: 169-180.
- 14 **Silveira MJ, Harthman VC, Michelin TS, Souza LA. 2016.** Anatomical development of  
15 roots of native and non-native submerged aquatic macrophytes in different sediment  
16 types. *Aquatic Botany* **133**: 24-27.
- 17 **Silvera K, Neubig KM, Whitten WM, Williams NH, Winter K, Cushman JC. 2010.**  
18 Evolution along the crassulacean acid metabolism continuum. *Functional Plant*  
19 *Biology* **37**: 995-1010.
- 20 **Slaton MR, Smith WK. 2002.** Mesophyll architecture and cell exposure to intercellular air  
21 space in alpine, desert, and forest species. *International Journal of Plant Sciences* **163**:  
22 937-948.
- 23 **Smith RA, Lewis JD, Ghannoum O, Tissue DT. 2012.** Leaf structural responses to pre-  
24 industrial, current and elevated atmospheric [CO<sub>2</sub>] and temperature affect leaf  
25 function in *Eucalyptus sideroxylon*. *Functional Plant Biology* **39**: 285-296.

- 1 **Søndergaard M, Wetzel RG. 1980.** Photorespiration and internal recycling of CO<sub>2</sub> in the  
2 submersed angiosperm *Scirpus subterminalis*. *Canadian Journal of Botany* **58**: 591-  
3 598.
- 4 **Stemann Nielsen E. 1947.** Photosynthesis of aquatic plants with special reference to the  
5 carbon-sources. *Dansk Botanisk Arkiv* **12**: 1-71.
- 6 **Uprety DC, Dwivedi N, Mohan R, Paswan G. 2001.** Effect of elevated CO<sub>2</sub> concentration  
7 on leaf structure of *Brassica Juncea* under water stress. *Biologia Plantarum* **44**: 149-  
8 152.
- 9 **von Caemmerer S, Edwards GE, Koteyeva N, Cousins AB. 2014.** Single cell C<sub>4</sub>  
10 photosynthesis in aquatic and terrestrial plants: a gas exchange perspective. *Aquatic*  
11 *Botany* **118**: 71-80.
- 12 **Voznesenskaya EV, Edwards GE, Kiirats O, Artyusheva EG, Franceschi VR. 2003.**  
13 Development of biochemical specialization and organelle partitioning in the single-  
14 cell C<sub>4</sub> system in leaves of *Borszczowia aralocaspica* (Chenopodiaceae). *American*  
15 *Journal of Botany* **90**: 1669-1680.
- 16 **Voznesenskaya EV, Franceschi VR, Kiirats O, Artyusheva EG, Freitag H, Edwards GE.**  
17 **2002.** Proof of C<sub>4</sub> photosynthesis without Kranz anatomy in *Bienertia cycloptera*  
18 (Chenopodiaceae). *The Plant Journal* **31**: 649-662.
- 19 **Voznesenskaya EV, Franceschi VR, Kiirats O, Freitag H, Edwards GE. 2001.** Kranz  
20 anatomy is not essential for terrestrial C<sub>4</sub> plant photosynthesis. *Nature* **414**: 543-546.
- 21 **Wetzel RG, Brammer ES, Forsberg C. 1984.** Photosynthesis of submersed macrophytes in  
22 acidified lakes. I. Carbon fluxes and recycling of CO<sub>2</sub> in *Juncus bulbosus* L. *Aquatic*  
23 *Botany* **19**: 329-342.
- 24 **Woo KC, Anderson JM, Boardman NK, Downton WJS, Osmond CB, Thorne SW. 1970.**  
25 Deficient photosystem II in agranal bundle sheath chloroplasts of C<sub>4</sub> plants.  
26 *Proceedings of the National Academy of Sciences* **67**: 18-25.

1 **Yin L, Li W, Madsen TV, Maberly SC, Bowes G. 2017.** Photosynthetic inorganic carbon  
2 acquisition in 30 freshwater macrophytes. *Aquatic Botany* **140**: 48-54.

3 **Zeiger E. 1983.** The biology of stomatal guard cells. *Annual Review of Plant Physiology* **34**:  
4 441-475.

5 **Zhang Y, Yin L, Jiang H-S, Li W, Gontero B, Maberly SC. 2014.** Biochemical and  
6 biophysical CO<sub>2</sub> concentrating mechanisms in two species of freshwater macrophyte  
7 within the genus *Ottelia* (Hydrocharitaceae). *Photosynthesis Research* **121**: 285-297.

8 **Ziegler H, Hertel H. 2007.** Carbon isotope fractionation in species of the torrenticolous  
9 families Podostemaceae and Hydrostachyaceae. *Flora* **202**: 647-652.

10

11

## 1 **Legends**

2 FIG. 1. Influence of CO<sub>2</sub> concentration on activities of enzymes from *O. alismoides*  
3 leaves collected at dusk (1800) and dawn (0500). (A) PEPC activity. (B) Rubisco  
4 activity. (C) Ratio of PEPC to Rubisco activity. The mean values (n = 3-4), with their  
5 SD are shown. The statistical differences between means were tested using  
6 independent sample t-tests in panel A and B and independent sample t-tests and the  
7 Mann-Whitney U test in panel C. The statistic above the horizontal line compares  
8 leaves exposed to high CO<sub>2</sub> (black bars) and low CO<sub>2</sub> (white bars) collected at the  
9 same time (NS not significant, \**P* < 0.05, \*\*\**P* < 0.001); data with different small and  
10 large letters are significantly different between dusk and dawn, under high and low  
11 CO<sub>2</sub> treatments respectively (*P* < 0.05).

12

13 FIG. 2. Influence of high CO<sub>2</sub> (HC) and low CO<sub>2</sub> (LC) on acidity of *O. alismoides*  
14 leaves from dusk (1800) and dawn (0500). The mean values (n = 3-4), with their SD  
15 are shown. The statistical differences between means were tested using independent  
16 sample t-tests and the Mann-Whitney U test. The statistic above the horizontal line  
17 compares acidity in dusk and dawn (NS not significant, \*\**P* < 0.01) within the same  
18 CO<sub>2</sub> treatment; changes in acidity with different letters are significantly different  
19 between HC and LC treatments (*P* < 0.05).

20

21 FIG. 3. Transverse sections of *O. alismoides* leaves under high CO<sub>2</sub> concentration (A-  
22 C) and low CO<sub>2</sub> concentration (D-F) at dusk (1800). a, air space; le, lower epidermis;  
23 m, mesophyll cell; ue, upper epidermis; v, vascular bundle. The arrowhead indicates  
24 the chloroplasts. Scale bar = 100 μm.

25

26 FIG. 4. Effects of CO<sub>2</sub> concentration on anatomical characteristics of *O. alismoides*  
27 leaves. (A) The thickness of upper epidermis, lower epidermis, mesophyll and air  
28 space in transverse section. (B) The area of upper epidermal cell, lower epidermal cell,  
29 mesophyll cell and air space in transverse section. The mean values (n ≥ 30), with  
30 their SD are shown. The statistical differences between means were tested using  
31 independent sample t-tests and the Mann-Whitney U test. The statistic above the

1 horizontal line compares leaves under high CO<sub>2</sub> (black bars) and low CO<sub>2</sub> (white bars)  
2 concentration (\**P* < 0.05, \*\**P* < 0.01, \*\*\**P* < 0.001).

3  
4 FIG. 5. Ultrastructure of chloroplasts in *O. alismoides* leaves under different CO<sub>2</sub>  
5 concentrations and times of day. The upper row cells are from high and the lower row  
6 cells from low CO<sub>2</sub> concentration. A, B, F and G are epidermal cells at dusk (1800). C  
7 and H are epidermal cells at dawn (0500). D and I are mesophyll cells from dusk  
8 (1800) and E and J are mesophyll cells from dawn (0500). cw, cell wall; g, grana; m,  
9 mitochondria; p, plastoglobuli; s, starch grain. Scale bar = 1 μm.

10  
11 FIG. 6. Effects of CO<sub>2</sub> concentration on characteristics of chloroplasts located in  
12 epidermal and mesophyll cells of *O. alismoides* leaves. (A & B) Chloroplast major  
13 and minor axis length at dusk (1800). (C) Area of chloroplast at dusk (1800). (D)  
14 Number of mitochondria within 1 μm of a chloroplast at dusk (1800). (E & F) Area  
15 ratio of starch to chloroplast in *O. alismoides* leaves collected at dusk (1800) and  
16 dawn (0500). The mean values (n ≥ 20), with their SD are shown. The statistical  
17 differences between means were tested using independent sample t-tests in panels A  
18 and C and independent sample t-tests and the Mann-Whitney U test in panels B, D, E  
19 and F. The statistic above the horizontal line compares high CO<sub>2</sub> (black bars) with  
20 low CO<sub>2</sub> (white bars) treatments (*NS* not significant, \**P* < 0.05, \*\**P* < 0.01, \*\*\**P* <  
21 0.001); data with different small and large letters are significantly different between  
22 chloroplasts in the two cell types, under high and low CO<sub>2</sub> treatments respectively (*P*  
23 < 0.05).

24  
25 FIG. 7. The number of chloroplasts per unit length of cell wall under different CO<sub>2</sub>  
26 concentrations at dusk (1800). UEW, Upper epidermis, wall next to water; UEA,  
27 Upper epidermis, wall next to air space; UM, Upper mesophyll cell; LM, Lower  
28 mesophyll cell; LEA, Lower epidermis, wall next to air space; LEW, Lower  
29 epidermis, wall next to water. Error bars represent SD (n ≥ 20). The statistic above the  
30 horizontal line compares high CO<sub>2</sub> (black bars) and low CO<sub>2</sub> (white bars) treatments  
31 based on independent sample t-tests and the Mann-Whitney U-test (*NS* not significant,

1 \*\* $P < 0.01$ ); data with different small and large letters are significantly different  
2 among different locations based on the Kruskal-Wallis test ( $P < 0.05$ ) under high and  
3 low CO<sub>2</sub> treatments.

#### 4 **SUPPLEMENTARY INFORMATION**

5 **Supplementary Data Fig. S1.** Fluctuations of CO<sub>2</sub> concentration in high CO<sub>2</sub>  
6 and low CO<sub>2</sub> treatments during the 40-days acclimation.

7 **Supplementary Data Fig. S2.** Photographs of the surface of a mature *O.*  
8 *alismoides* leaf from the low CO<sub>2</sub> treatment using a laser scanning confocal  
9 microscope.

10 **Supplementary Data Fig. S3.** Conceptual overview summarizing the structure  
11 of *O. alismoides* leaves acclimated to high CO<sub>2</sub> and low CO<sub>2</sub> concentrations.

12 **Supplementary Data Table S1.** The chemical composition of the tap water  
13 used in the growth experiments.

14

15



1 Table 1. Influence of CO<sub>2</sub> concentration on characteristics of *O. alismoides* leaves.  
 2 The mean values are given with SD in parenthesis. Significant differences between  
 3 leaves treated with different CO<sub>2</sub> concentration are shown based on independent  
 4 sample t-test (NS not significant, \**P* < 0.05, \*\*\**P* < 0.001).

Characteristics	High CO <sub>2</sub>	Low CO <sub>2</sub>	Significance	n
Leaf length (cm)	12.08 (0.36)	11.58 (0.68)	NS	5
Leaf width (cm)	8.56 (0.50)	5.44 (0.18)	***	5
Length-width ratio	1.41 (0.06)	2.13 (0.12)	***	5
Leaf thickness (µm)	196 (17)	161 (18)	*	4
The ratio of air space to leaf area in transverse section	0.22 (0.03)	0.23 (0.02)	NS	4

5  
 6  
 7

1 Table 2. Characteristics of dimorphic chloroplasts in aquatic and terrestrial plants.

2

Environment /type/ species	Location	Area ( $\mu\text{m}^2$ )	Thylakoids per granum	Starch	References
<b>Aquatic C<sub>3</sub></b>					
<i>Hydrobryum khaoyaiense</i>	E	3.7 ± 1.8	3~4	+	Fujinami et al. (2011)
	E	23.7 ± 11	4~5	+++	
<i>Cabomba caroliniana</i>	E	~3.8 <sup>a</sup>	~9	+	Galati et al. (2015)
	M	~33.2 <sup>a</sup>	~29	++	
<b>Aquatic NAD-ME C<sub>4</sub></b>					
<i>Ottelia alismoides</i> <sup>b</sup>	E	9.0 ± 2.3	++	++	This study
	M	13.8 ± 3.3	+	+++	
<b>Terrestrial NADP-ME C<sub>4</sub></b>					
<i>Zea mays</i>	M	Small	+++	++	Hodge et al. (1955); Laetsch (1968)
	BS	Large	+	+++	
<i>Saccharum officinarum</i>	M	Small	+++	+	Laetsch and Price (1969)
	BS	Large	-	+++	
<i>Sorghum bicolor</i>	M	nd	+++	nd	Woo et al. (1970)
	BS	nd	-	nd	
<i>Salsola australis</i>	M	6.67~8.2 <sup>a</sup>	6~12	+	P'yankov et al. (1997)
	BS	14.6~16.1 <sup>a</sup>	2~5	+++	
<b>Terrestrial NAD-ME C<sub>4</sub></b>					
<i>Amaranthus edulis</i>	P	Small	++	+	Laetsch (1968)
	BS	Large	++	+++	
<i>Atriplex lentiformis</i>	P	nd	2~3	+	Laetsch (1968)
	BS	nd	++	+++	
<i>Atriplex spongiosa</i>	M	nd	+	nd	Woo et al. (1970)
	BS	nd	+++	nd	
<b>Terrestrial Single-cell NAD-ME C<sub>4</sub></b>					
<i>Bienertia cycloptera</i>	C <sup>c</sup>	nd	~ 2	-	Voznesenskaya et al. (2002)
	C <sup>d</sup>	nd	3~5	++	
<i>Suaeda aralocaspica</i>	C <sup>c</sup>	3.48~4.0 <sup>a</sup>	+	+	Voznesenskaya et al. (2003)
	C <sup>d</sup>	7.18~8.0 <sup>a</sup>	+++	+++	

3 <sup>a</sup> Calculated according to axis length in reference

4 <sup>b</sup> Plants treated with low CO<sub>2</sub> concentrations

5 <sup>c</sup> Chloroplasts have structural characteristics like those in mesophyll

6 <sup>d</sup> Chloroplasts have structural characteristics like those in bundle sheath cell

7 - Lack grana/starch; + Rudimentary grana/starch; ++ Contain grana/starch; +++ Well-  
8 developed grana/starch; BS = Bundle sheath cell; C = Chlorenchyma cell; E = Epidermal cell;  
9 M = Mesophyll cell; P = Palisade cell; nd = not determined.

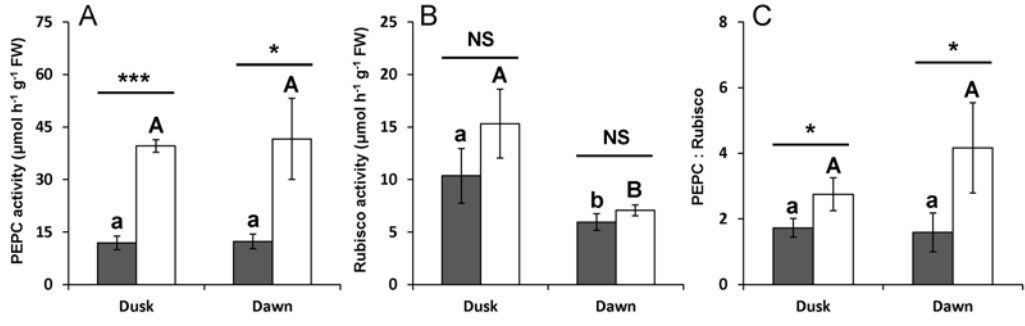
10

11

12

13

Fig. 1

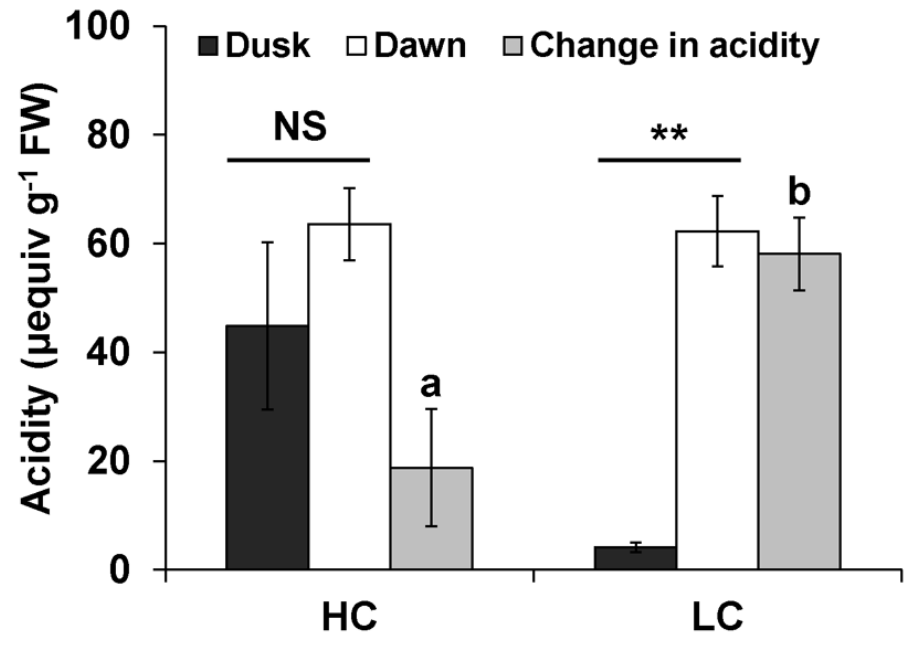


1

2

1

Fig. 2

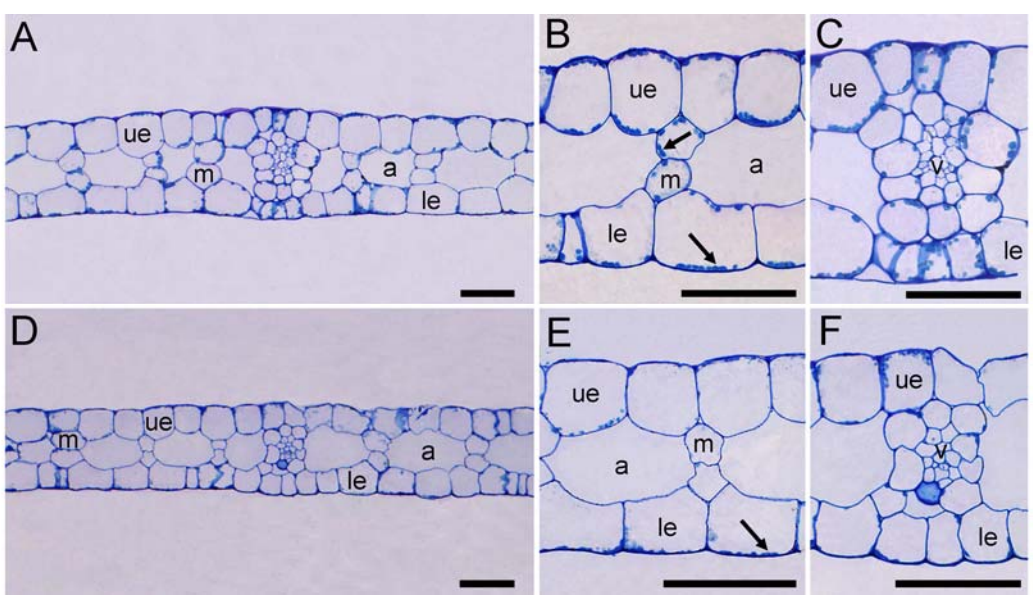


2

3

1

Fig. 3

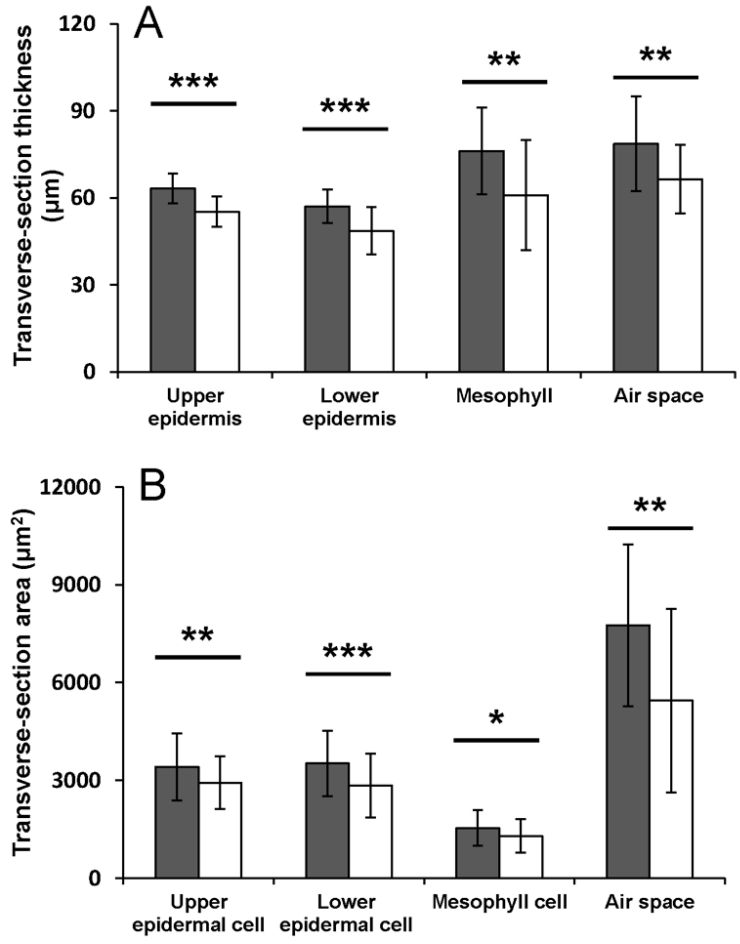


2

3

1

Fig. 4



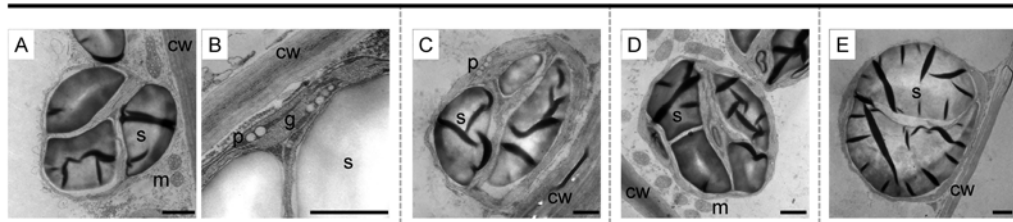
2

3

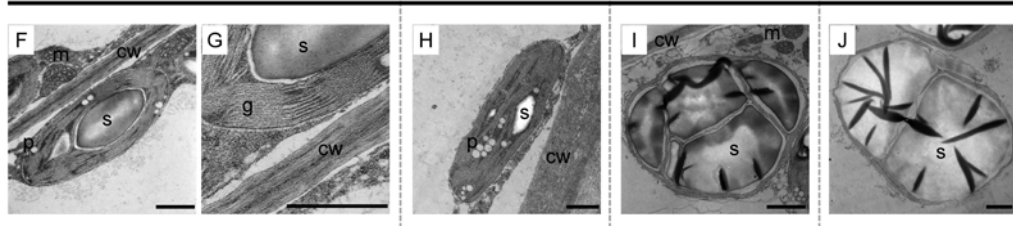
1

Fig. 5

**HC acclimated**



**LC acclimated**



Epidermal cells (Dusk)

Epidermal cells (Dawn)

Mesophyll cells (Dusk)

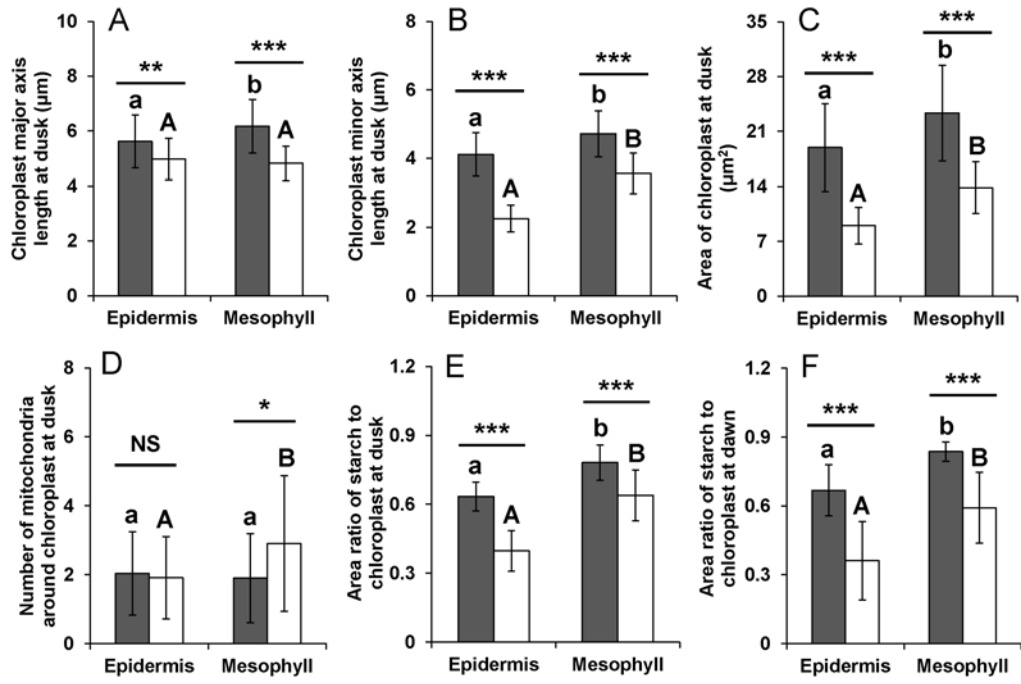
Mesophyll cells (Dawn)

2

3

1

Fig. 6



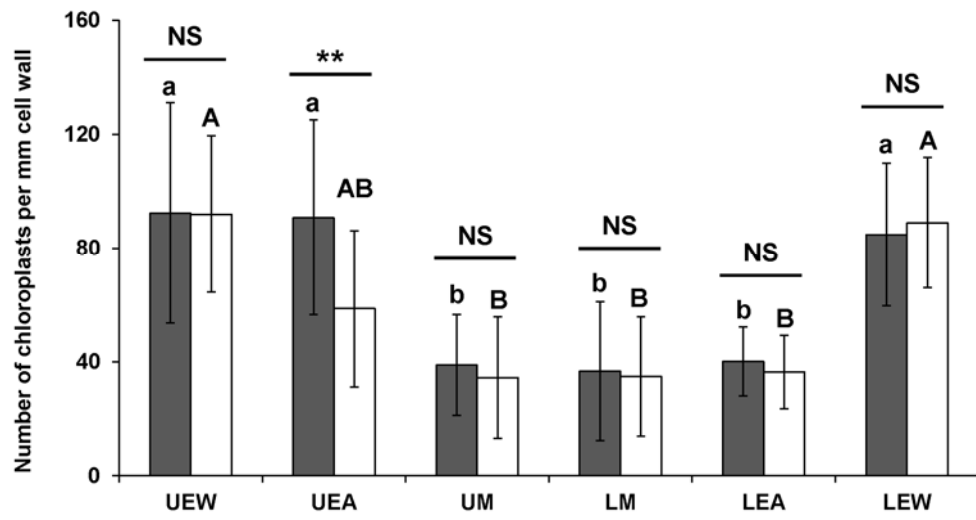
2

3



1

Fig. 7

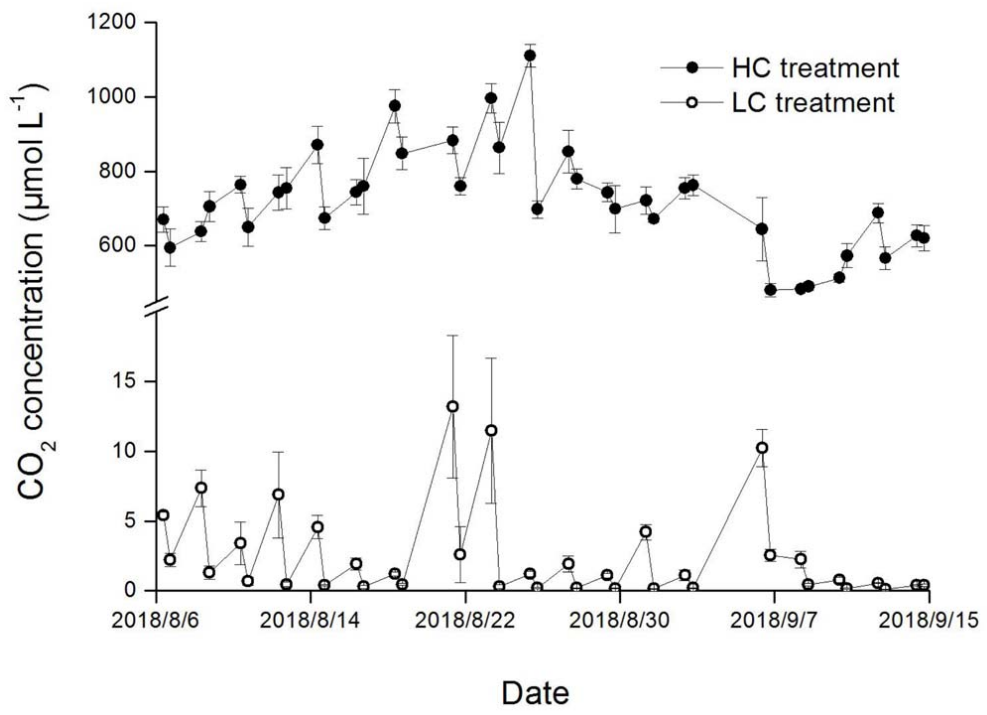


2

3

1

Fig. S1

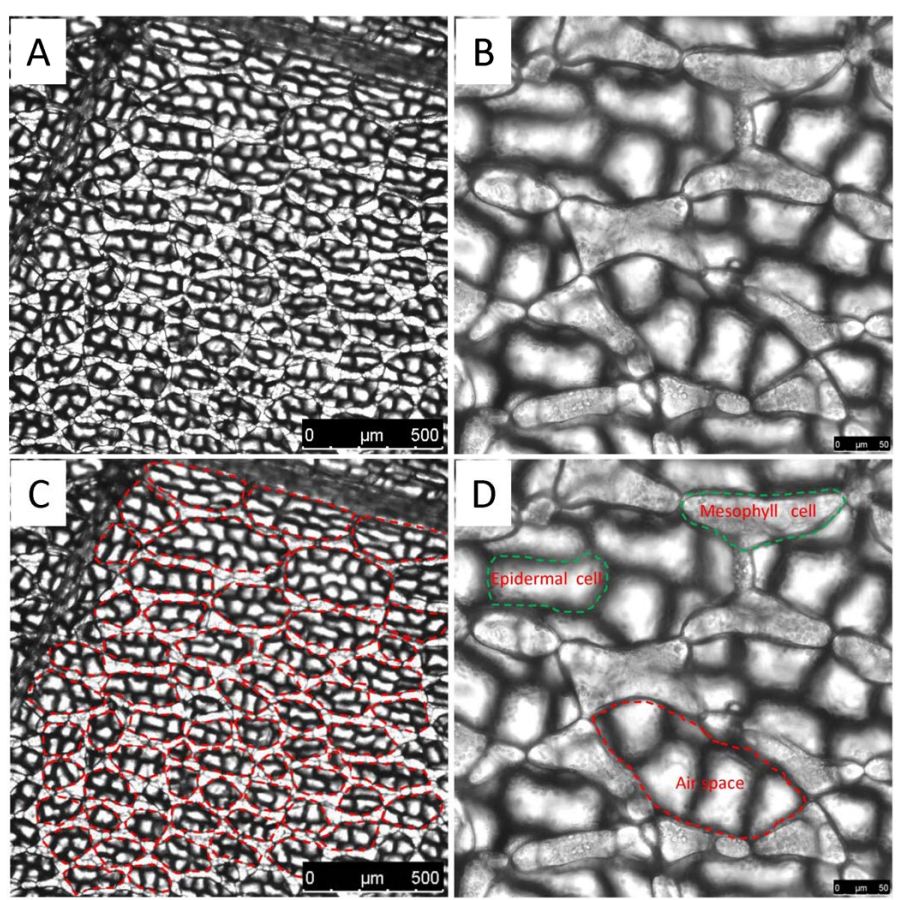


2

3

1

Fig. S2

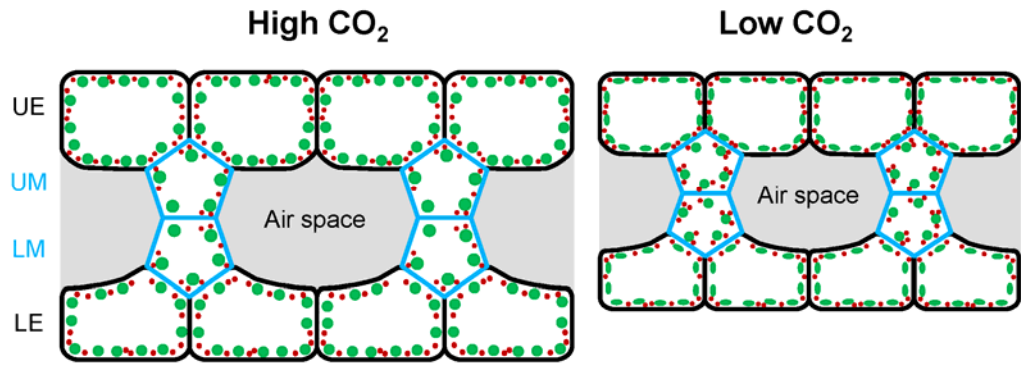


2

3

1

Fig. S3



2

3

1 Table S1

2

<b>Component</b>	<b>Mean (SD)</b>
Alkalinity	2200 (10)
TP	1.61 (0.32)
TN	100 (5)
Na <sup>+</sup>	635 (15)
K <sup>+</sup>	130 (19)
Ca <sup>2+</sup>	2255 (21)
Mg <sup>2+</sup>	789 (6)
Cl <sup>-</sup>	590 (2)
SO <sub>4</sub> <sup>2-</sup>	670 (3)
NO <sub>3</sub> <sup>-</sup>	86 (2)

3