



# Direct Pre-lithiation of Electropolymerized Carbon Nanotubes for Enhanced Cycling Performance of Flexible Li-Ion Micro-Batteries

Florence Vacandio

## ► To cite this version:

Florence Vacandio. Direct Pre-lithiation of Electropolymerized Carbon Nanotubes for Enhanced Cycling Performance of Flexible Li-Ion Micro-Batteries. *Polymers*, 2020, 12 (2), pp.406. 10.3390/polym12020406 . hal-02649461

**HAL Id: hal-02649461**

**<https://amu.hal.science/hal-02649461>**

Submitted on 29 May 2020

**HAL** is a multi-disciplinary open access archive for the deposit and dissemination of scientific research documents, whether they are published or not. The documents may come from teaching and research institutions in France or abroad, or from public or private research centers.

L'archive ouverte pluridisciplinaire **HAL**, est destinée au dépôt et à la diffusion de documents scientifiques de niveau recherche, publiés ou non, émanant des établissements d'enseignement et de recherche français ou étrangers, des laboratoires publics ou privés.



Distributed under a Creative Commons Attribution 4.0 International License

# Direct Pre-lithiation of Electropolymerized Carbon Nanotubes for Enhanced Cycling Performance of Flexible Li-Ion Micro-Batteries

Vinsensia Ade Sugiawati <sup>1</sup>, Florence Vacandio <sup>2</sup>, N. Yitzhack <sup>3</sup>, Yair Ein-Eli <sup>3,4</sup> and Thierry Djenizian <sup>1,5,\*</sup>

<sup>1</sup> Mines Saint-Etienne, Center of Microelectronics in Provence, Department of Flexible Electronics, F-13541, Gardanne, France; vinsensia.sugiawati@gmail.com (V.A.S.); thierry.djenizian@emse.fr (T.D.)

<sup>2</sup> CNRS, Electrochemistry of Materials Research Group, Aix Marseille Université, MADIREL, UMR 7246, F-13397 Marseille CEDEX 20, France; florence.vacandio@univ-amu.fr

<sup>3</sup> Department of Materials Science and Engineering, Technion-Israel Institute of Technology, Haifa 3200003, Israel; eineli@technion.ac.il (Y.E.-E.); neta\_y@campus.technion.ac.il (N.Y.)

<sup>4</sup> The Nancy & Stephan Grand Technion Energy Program, Technion-Israel Institute of Technology, Haifa 3200003, Israel; eineli@technion.ac.il

<sup>5</sup> Al-Farabi Kazakh National University, Center of Physical-Chemical Methods of Research and Analysis, Tole bi str., 96A, Almaty, Kazakhstan; thierry.djenizian@emse.fr

\* Correspondence: thierry.djenizian@emse.fr

Received: 9 January 2020; Accepted: 7 February 2020; Published: date

**Abstract:** Carbon nanotubes (CNT) are used as anodes for flexible Li-ion micro-batteries. However, one of the major challenges in the growth of flexible micro-batteries with CNT as the anode is their immense capacity loss and a very low initial coulombic efficiency. In this study, we report the use of a facile direct pre-lithiation to suppress high irreversible capacity of the CNT electrodes in the first cycles. Pre-lithiated polymer-coated CNT anodes displayed good rate capabilities, studied up to 30 C and delivered high capacities of 850 mAh g<sup>-1</sup> (313 μAh cm<sup>-2</sup>) at 1 C rate over 50 charge-discharge cycles.

**Keywords:** carbon nanotubes; polymer electrolyte; Li-ion micro-batteries; flexible anode; pre-lithiation

## 1. Introduction

Li-ion batteries (LIBs) have been successfully employed in a wide range of applications, such as electric vehicles, microelectronic devices, etc., due to their remarkable properties such as high energy density, lack of memory effect, long cycle life, low self-discharge and high thermal resistance [1–3]. A large variety of carbon-based materials for LIBs have been widely investigated, such as graphene, fullerene and carbon nanotubes (CNT) [4–10]. For instance, a high capacity of a sandwich-like and porous NiCo<sub>2</sub>O<sub>4</sub>@reduced graphene oxide (rGO) nanocomposite serving as anode material was reported by Huang's group [11]. Kumar et al. synthesized octahedral iron oxide nanocrystals on reduced graphene oxide nanosheets by a microwave-assisted process [12]. Zhang et al. demonstrated that electrodeposition can be used to prepare NiCo<sub>2</sub>O<sub>4</sub>/graphene [13], while Chen et al. prepared graphene hybrid nanosheet arrays via a one-pot procedure [14]; these synthesized graphene electrodes delivered good electrochemical performances. More recently, rapid research progress has been made in exploring flexible anode materials delivering high storage capacity and remarkable long-term cyclability [15–17]. As an allotrope of carbon, CNT electrodes offer several outstanding properties, such as excellent flexibility, fast charge transport, large surface-to-volume ratio, good

chemical stability, high electrical conductivity and high reversible capacity [18–26]. Several methods to synthesize CNT have been demonstrated, e.g., chemical vapor deposition (CVD) [25,27], pyrolysis [28], arc discharge [29,30], laser ablation [31] and electrolysis [32]. These methods allowed the growth of CNT with various morphology, structure and properties.

As a potential flexible anode material, our previous report showed that the CNT reached a higher specific capacity (more than  $700 \text{ mAh g}^{-1}$ ) compared to a traditional graphite anodes ( $372 \text{ mAh g}^{-1}$ ) [33]. Also, Yoon et al. [34] reported that heat-treated CNT can deliver a reversible capacity of  $446 \text{ mAh g}^{-1}$  at 0.5 C, with a low Initial Coulombic Efficiency (ICE) of 9.6%. Zhou et al. [35] reported that CNT showing bamboo-like structure delivered a reversible capacity of  $135 \text{ mAh g}^{-1}$  with ICE of 17.3%. Li et al. studied a high-concentration, nitrogen-doped CNT anode providing reversible capacity of  $494 \text{ mAh g}^{-1}$  [21], while Welna et al. [36] demonstrated that vertically aligned MWCNT-based anodes showed an excellent lithium storage capacity of  $980 \text{ mAh g}^{-1}$  in the initial cycle which stabilized after first few cycles, delivering a discharge capacity of  $750 \text{ mAh g}^{-1}$ . Despite CNT exhibiting remarkable features as flexible anode materials, major challenges, such as the huge surface area of the CNT promoting a high capacity loss in the first initial cycles, needs to be first tackled [37,38]. Consequently, CNT-based electrodes have a low ICE due to the solid electrolyte interphase (SEI) film formation upon the initial lithiation. This SEI film formation consumes a high amount of Li ions during the first discharge, which further limits the electrochemical performance of the cells, particularly when the CNT anode is coupled with the cathode material in full-cell configuration [39–41].

Several pre-lithiation methods have been investigated to compensate the severe capacity loss of the anode materials, for instance, Seong et al. reported that SiO anode was effectively pre-lithiated using stabilized lithium metal powder (SLMP) [42], Liu et al. studied pre-lithiated Si nanowire anode via a self-discharge mechanism [43] and Scott et al. also reported a complete diminishing of the initial capacity loss for carbon electrodes using n-butyllithium in hexane [44]. Wu et al. successfully fabricated a PPy/Li<sub>2</sub>S/KB cathode by pre-lithiation and the lithiated cathode exhibited high capacity of  $1000 \text{ mAh g}^{-1}$  with a coulombic efficiency around 95% at 0.2 C [45]. Among these methods, the self-discharge or direct pre-lithiation presents several advantages, such as low cost, fast pre-lithiation process (less time consuming), easy operation and an excellent lithiation efficiency [39,43]. However, there have been only few attempts to reduce the high irreversible capacity of CNT as anodes [39] and no study on pre-lithiated CNT coating with a polymer film.

Recently, our groups demonstrated the crucial impact of the electropolymerization of p-sulfonated poly(allyl phenyl ether) (SPAPE) electrolyte on the electrochemical performances of CNT anodes [33]. A high reversible capacity of  $750 \text{ mAh g}^{-1}$  ( $276 \mu\text{Ah cm}^{-2}$ ) at 1 C rate with the ICE of 10.4% can be obtained and interestingly, the areal capacity of SPAPE-coated CNT is enhanced by 67% compared to the pristine ones [33]. However, due to their low ICE, in the current study we report a simple direct pre-lithiation method to alleviate the initial irreversible capacity of the electropolymerized CNT anodes for flexible micro-batteries. Indeed, the long-term and extensive cycling performance of the pre-lithiated CNT is achieved over 500 cycles at a 10 C rate and its excellent rate capability is also present even at very high current density (1 to 30 C rates).

## 2. Materials and Methods

### 2.1. Materials

CNT were provided by Tortech NanoFibers Ltd. (Ma'alot Tarshiha, Israel), having a density of  $0.613 \text{ g cm}^{-3}$ , a thickness of  $30 \mu\text{m}$  and a porosity of approximately 70% [3]. The samples were initially washed in iso-propyl alcohol before being used as anode material, as previously reported [19,37]. A Cu target was purchased from Neyco (VANVES, France) purity: 99.9 %. Lithium bis(trifluoromethane)sulfonimide (LiTFSI), 1 M LiPF<sub>6</sub> (EC: DEC, v/v) and dimethylsulfoxide (DMSO) were purchased from Sigma–Aldrich (St. Quentin Fallavier Cedex, France).

## 2.2. Synthesis of the Positive Electrodes

$\text{LiNi}_{0.5}\text{Mn}_{1.5}\text{O}_4$  (LNMO) serving as cathode was synthesized by a sol-gel method as described in [46]. To prepare the composite cathode, LNMO powder was mixed with carbon black (Super P) and polyvinylidene fluoride (PVDF) at the ratio of 80:10:10 and ground in a mortar for 20 min. N-Methyl-2-pyrrolidone (NMP) was added in the powder mixture to obtain a paste. The paste was subsequently spread on an aluminum disk as current collector with a diameter of 8 mm. The electrode was dried at 80 °C and was kept under vacuum at 110 °C for 10 h.

## 2.3. Electropolymerization and Direct Pre-Lithiation of CNT Electrodes

The metallic Cu thin film was deposited onto the CNT surface utilizing a Cu target by radio frequency sputtering (MP300 model, PLASSYS, Marolles en Hurepoix, France), as described in our previous work [33]. The 300 nm-thin layer of sputter-deposited Cu film was utilized as the backside connection of the electropolymerization reaction. Electropolymerization of the SPAPE polymer electrolyte onto CNT was conducted by cyclic voltammetry (CV) in a three-electrode electrochemical cell using a VersaSTAT 3 potentiostat (Princeton Applied Research, Elancourt, France) with a Pt electrode as the counter and Ag/AgCl (3 M KCl) as the reference electrode [33,47]. Cyclic voltammetry was performed onto the CNT electrodes in order to polymerize the sulfonated aromatic precursor. An electrolyte solution containing  $5.2 \times 10^{-3}$  M of the synthesized monomer was mixed with 0.5 M LiTFSI as a supporting electrolyte and DMSO as a solvent. The CV experiments were carried out at room temperature for 10 cycles at the scan rate of  $20 \text{ mV s}^{-1}$  in the potential window of  $-0.9$  to  $-1.8 \text{ V}$  vs. Ag/AgCl (3 M KCl). After electropolymerization, a simple pre-lithiation treatment was achieved by pressing a Li foil and the CNT soaked with 2 drops of electrolyte composed of 1 M  $\text{LiPF}_6$  (EC: DEC,  $v/v$ ). Various pre-lithiation durations were investigated i.e., 1, 3, 15 and 30 min, respectively. The pre-lithiated CNT were then tested as anode in half-cell and full-cell configuration. It is important to note that the used Li foil was cleaned and reutilized.

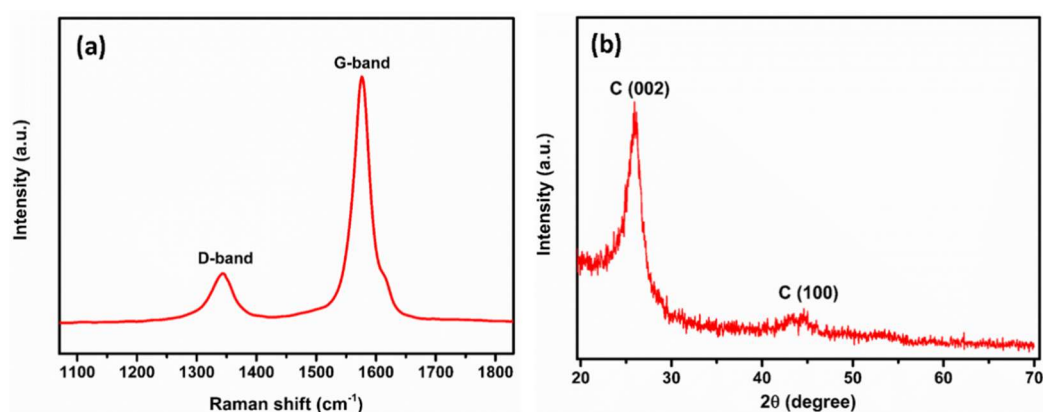
## 2.4. Characterization and Measurements

The surface morphology of the CNT anode was examined using a field-emission scanning electron microscope (SEM, Ultra-55, Carl Zeiss, Oberkochen, Germany) and by transmission electron microscopy (TEM) (Tecnai G2, Thermofisher Scientific, Waltham, MA, US). The purity of CNT was examined by x-ray diffraction (XRD) using a Diffractometer D5000 (Siemens, Munich, Germany) with  $\text{CuK}\alpha_1$  ( $\lambda = 1.5406 \text{ \AA}$ ) radiation, then analyzed by comparing with the JCDs-ICDD database (Joint Committee on Powder Diffraction Standards - International Center for Diffraction Data) to check the purity of the samples. Raman spectra were recorded with XploRA Raman spectrometer (Horiba Scientific, Kyoto, Japan) equipped with a 532 nm laser. For the electrochemical performance tests, Pristine CNT and SPAPE-coated CNT having a surface area of  $0.44 \text{ cm}^2$  were used as electrodes without the use of any binders and conductive additives, assembling using standard two-electrode Swagelok cells. All cells assembly were conducted in a glove box, filled with high purity argon (Ar) in which the moisture and oxygen contents were less than 2 ppm. Cyclic voltammetry tests were carried out using a VMP3 (Bio Logic, Seyssinet-Pariset, France) in the potential window of  $0.01$ – $2 \text{ V}$  vs.  $\text{Li/Li}^+$  with a scan rate of  $0.2 \text{ mV s}^{-1}$ . Galvanostatic charge–discharge cycles were performed with a VMP3 (Bio Logic) in the potential window between  $0.01$  and  $2 \text{ V}$  vs.  $\text{Li/Li}^+$  and the current density for the CNT electrodes (pristine and pre-lithiated) were  $0.12$ ,  $0.24$ ,  $0.60$ ,  $1.20$ ,  $1.8$ , and  $3.6 \text{ mA cm}^{-2}$ , respectively. The pristine CNT–LNMO and pre-lithiated CNT–LNMO full-cells were cycled at 1C and 2C rate in the potential window of  $2.5$ – $4.4 \text{ V}$ .

### 3. Results and Discussion

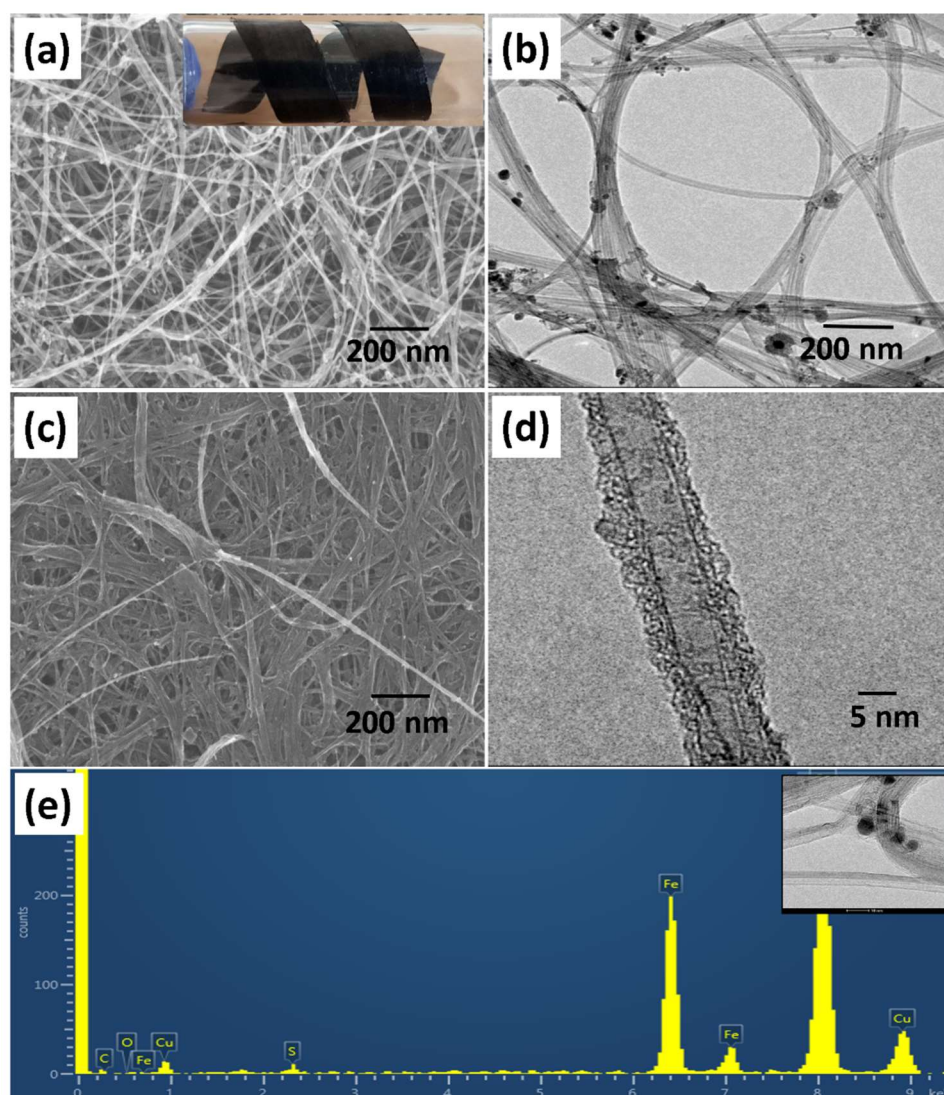
#### 3.1. Structural and Morphological Characterization

As shown in Figure 1a, the Raman spectrum of the CNT exhibits the two main bands characteristic of carbon materials in general, and to CNT in particular [48,49]. The G band ( $1573\text{ cm}^{-1}$ ) is correlated with the stretching of the C–C bond ( $\text{sp}^2$ ), and the D band ( $1341\text{ cm}^{-1}$ ) is attributed to the presence of disorders in the  $\text{sp}^2$  structure. The ratio between these two peaks ( $I_D/I_G$ ) is often used to assess the relative content of defects in the CNT. The low D band intensity of the CNT used in this work ( $I_D/I_G = 0.21 \pm 0.02$ ) indicates its relative purity. The crystallinity of the CNT was verified using X-ray diffraction and the patterns are given in Figure 1b. Two distinguishable diffraction peaks are clearly seen: a strong C (002) peak at approximately  $26^\circ$  represents the characteristic of graphite peak and the peak at approximately  $43^\circ$  is attributed to the (100) planes of the nanotube structure.



**Figure 1.** Raman spectra (a) and XRD pattern of the pristine carbon nanotubes (CNT) (b).

According to the SEM examinations, the pristine CNT are present as highly disoriented shaped nanotubes with diameters ranging from approximately 5 to 30 nm as shown in Figure 2a and b. After electropolymerization, densified and bundled CNT are obtained due to Van-der-Waals interactions among the neighboring tubes (Figure 3c,d). Moreover, we also observed that the electropolymerization process allows the densified and bundled CNT formation due to an interaction existing between the neighboring tubes [33]. The presence of nanoparticles attached on the pristine CNT surfaces is detected from the SEM and TEM images which is assumed to be a catalyst residue of metal impurities resulting from the synthesis process. The elemental energy dispersive x-ray spectroscopy (EDS) analysis spectra shows the presence of Fe particles which are attributed to the catalyst impurities and the Cu signal came from the Cu grid.



**Figure 2.** SEM image of pristine CNT (photograph of a flexible CNT in inset) (a); TEM image of pristine CNT (b); SEM image of p-sulfonated poly(allyl phenyl ether) (SPAPE)-coated CNT and (c) TEM image of SPAPE-coated CNT (d); and EDS spectra of pristine CNT (the inset is the corresponding TEM image) (e).

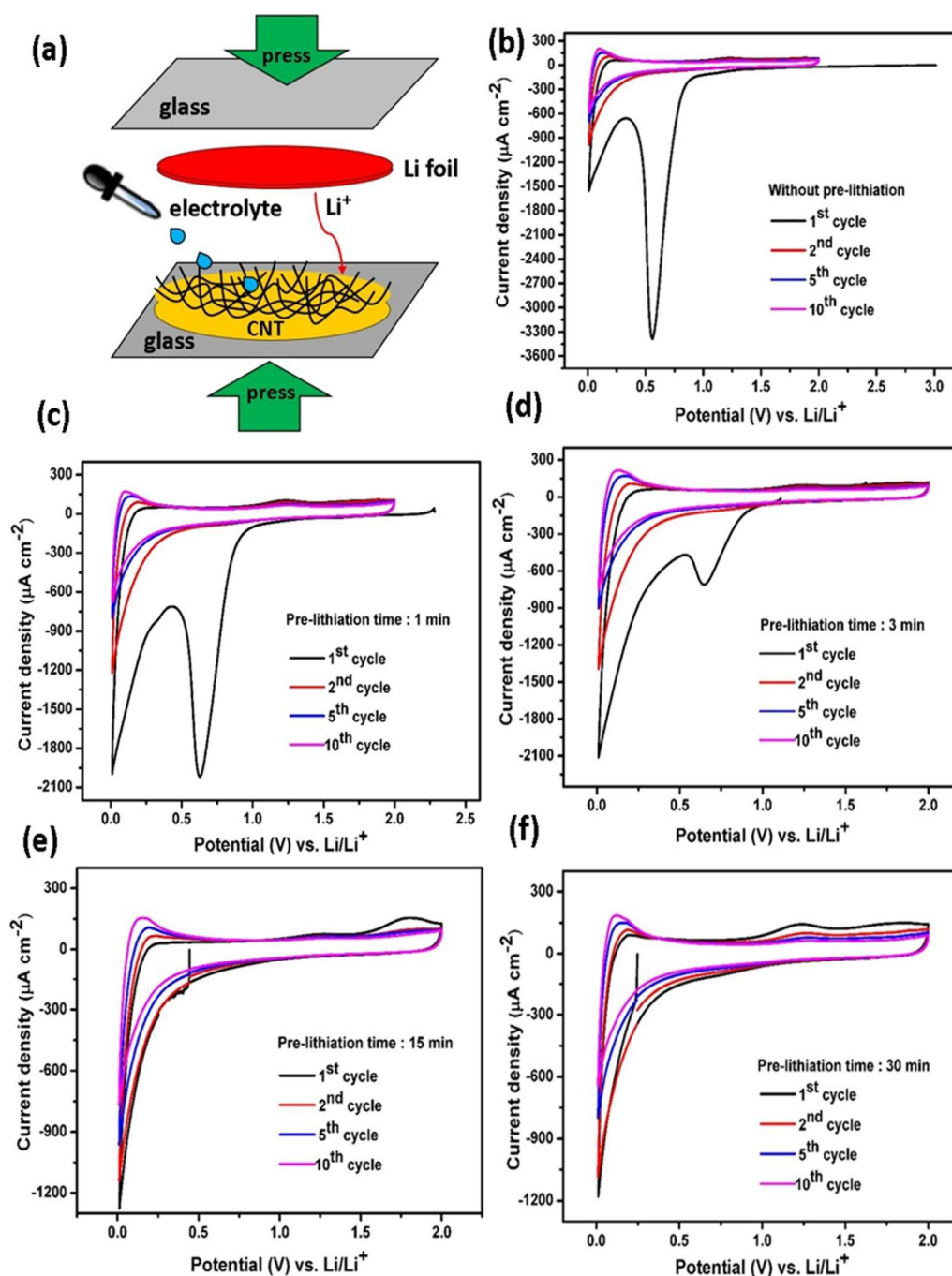
### 3.2. Cyclic Voltammetry

In the present study, we implemented a direct pre-lithiation method in order to suppress the irreversible capacity loss during the formation of SEI film in the first cycle [39]. A pre-lithiation process is schematically depicted in Figure 3a. The CNT were directly contacted with a Li metal film in a small amount of electrolyte. Hence, a self-Li-ion discharging process (lithiation) occurs due to the short being made; the different potential existing between CNT materials and Li metal becoming reduced to zero potential. In order to follow the effect of the pre-lithiation process at various contact times (1, 3, 15, and 30 min), we first investigated the electrochemical behavior of the pristine CNT and pre-lithiated CNT electrodes by comparing the cyclic voltammetry (CV) curves, as displayed in Figure 3b–f). It is clearly observed that prior to pre-lithiation, the CV curve exhibits an open circuit voltage (OCV) of ~3.1 V vs. Li/Li<sup>+</sup> and this would correspond to a purely delithiated state. During the first cycle, an obvious cathodic peak around 0.6 V attributed to the electrolyte decomposition is easily observed and corresponds to the formation and deposition of a SEI layer [50,51]. The peak disappearance in the subsequent cycles indicates a stable as-formed SEI is obtained. Another cathodic peak close to 0 V is attributed to Li<sup>+</sup> intercalation into CNT and oxidation peak located at 0.25 V corresponds to the Li<sup>+</sup> extraction process [21]. The broad oxidation peak ca. 1.25 V is also visible,

corresponding to the extraction of Li ions from the cavities existing in the CNT structure and the small oxidation peak ca. 1.8 V might be ascribed to the reaction of lithium with hydrogen functional groups on the CNT surfaces [33].

After a pre-lithiation of 1 min, the OCV drops to 2.4 V vs. Li/Li<sup>+</sup>, suggesting that a partial insertion of lithium ions into the CNT electrodes already occurred. We also observed the noticeable cathodic peak at ~0.6 V vs. Li/Li<sup>+</sup> being still present (with a lower absolute current density compared to pristine CNT), suggesting an incomplete SEI film formation on the CNT surfaces. Nonetheless, the direct pre-lithiation on the CNT surface provides beneficial effects, as the cathodic peak intensity of the SEI film formation has been successfully diminished. The observation is continued by examination of the CV curve after pre-lithiation for a period of 3 min and indeed, the OCV value decreased from 2.4 to 1.1 V vs. Li/Li<sup>+</sup>. At this stage, the electrode still exhibits similarity to previous samples; namely, the cathodic peak at ~0.6 V vs. Li/Li<sup>+</sup> is visible but its intensity obviously weakens. We assume that the contact time of 3 min is insufficient to fully form a stable SEI film. Therefore, it was suggested that OCV should be below the cathodic peak potential of the SEI film (approximately 0.6 V vs. Li/Li<sup>+</sup>). Thus, the contact time during pre-lithiation process should be longer than 3 min. To further investigate the different stages of OCV value, the CNT electrode was directly contacted with Li metal for 15 min. As seen, the OCV shifted to much lower voltage of 0.45 V vs. Li/Li<sup>+</sup> and the cathodic peak at ~0.6 V disappeared. After 30 min of pre-lithiation, CV curves show a slight decrease in the OCV, down to ~0.25 V vs. Li/Li<sup>+</sup> without any large cathodic peak. These results reveal that the SEI film has been successfully pre-formed on the CNT surfaces for a pre-lithiation time longer than 15 min. Compared to electrochemical pre-lithiation in which the lithiation reaction requires a slow rate (usually in 10 or 20 h), the direct pre-lithiation approach is much faster [20].





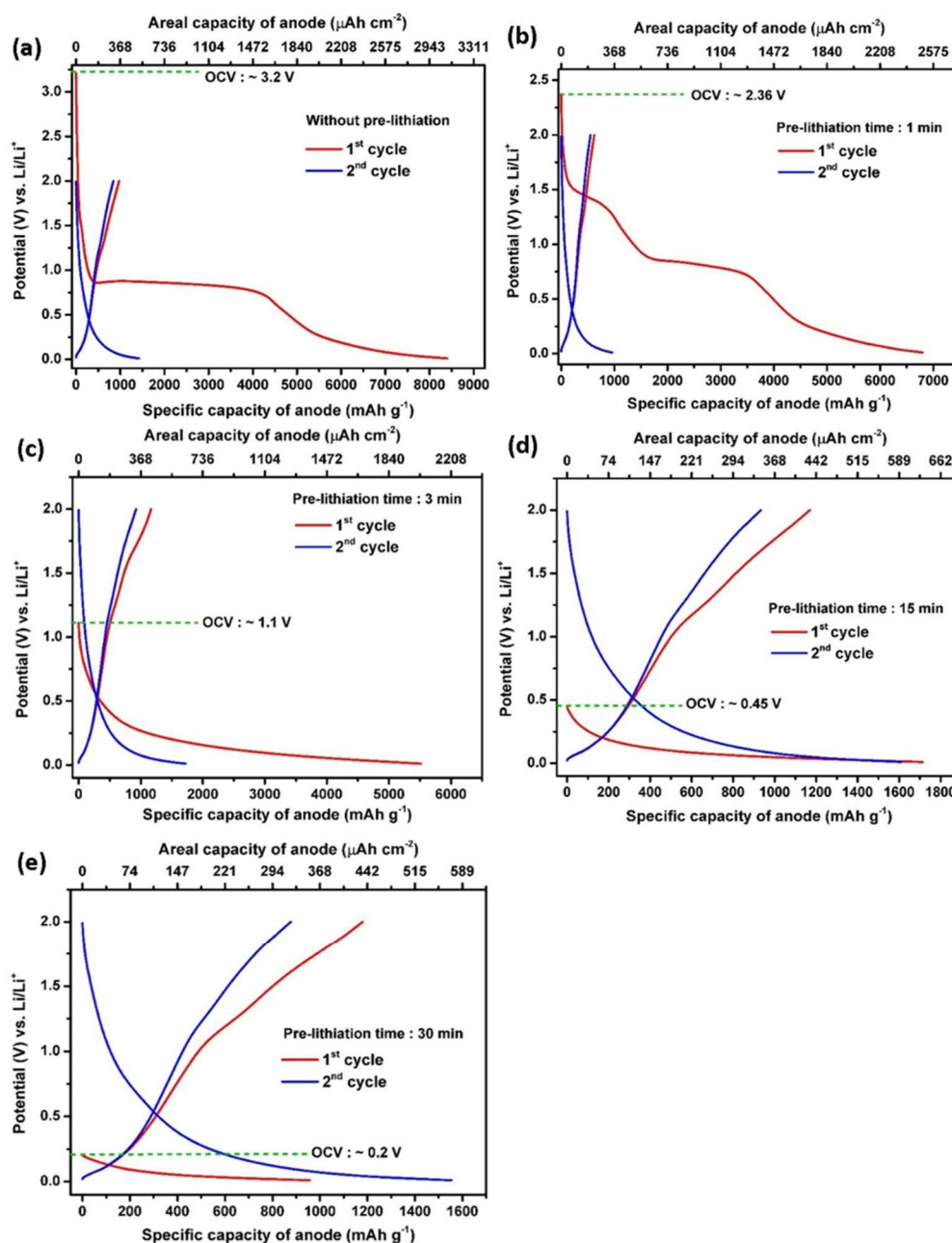
**Figure 3.** A schematic representation of a direct pre-lithiation method (a), cyclic voltammogram curves of the pristine CNT (b), pre-lithiated CNT for 1 min (c), pre-lithiated CNT for 3 min (d), pre-lithiated CNT for 15 min (e) and pre-lithiated CNT for 30 min (f) recorded at a scan rate of  $0.2 \text{ mV s}^{-1}$  in a potential range of  $0.01\text{--}2 \text{ V vs. Li/Li}^+$ .

### 3.3. Galvanostatic Charge–Discharge Profiles

In order to gain a deeper insight into the effect of the pre-lithiation process at different contact times, the galvanostatic charge–discharge tests were performed in a half-cell battery configuration. The charge–discharge curves for five CNT samples recorded at a current density of  $3.6 \text{ mA cm}^{-2}$  ( $2 \text{ C}$ ) are illustrated in Figure 4a–e. As can be seen, the various pre-lithiation times result in different electrochemical performances when the CNT are used as flexible anode materials. The plotted data shows the first two cycles corresponding to the discharge and charge processes of the pristine CNT and pre-lithiated CNT electrodes (1, 3, 15, and 30 min). During the first discharge of the pristine CNT, the voltage drops rapidly from OCV to  $0.8 \text{ V vs. Li/Li}^+$  with a large discharge plateau corresponding



to the SEI film formation consisting of a mixture of organic and inorganic lithium compounds [52,53]. This pristine CNT provides a charge capacity of  $8401 \text{ mAh g}^{-1}$  ( $3091 \text{ } \mu\text{Ah cm}^{-2}$ ) and a discharge capacity of  $972 \text{ mAh g}^{-1}$  ( $358 \text{ } \mu\text{Ah cm}^{-2}$ ) at 2 C rate, holding ICE value of 11.57%. The very low ICE and a vast majority of irreversible capacity loss is related to the SEI formation [54]. In agreement with the CV results, the OCV of the pre-lithiated CNT electrodes decreases along with increment contact time.



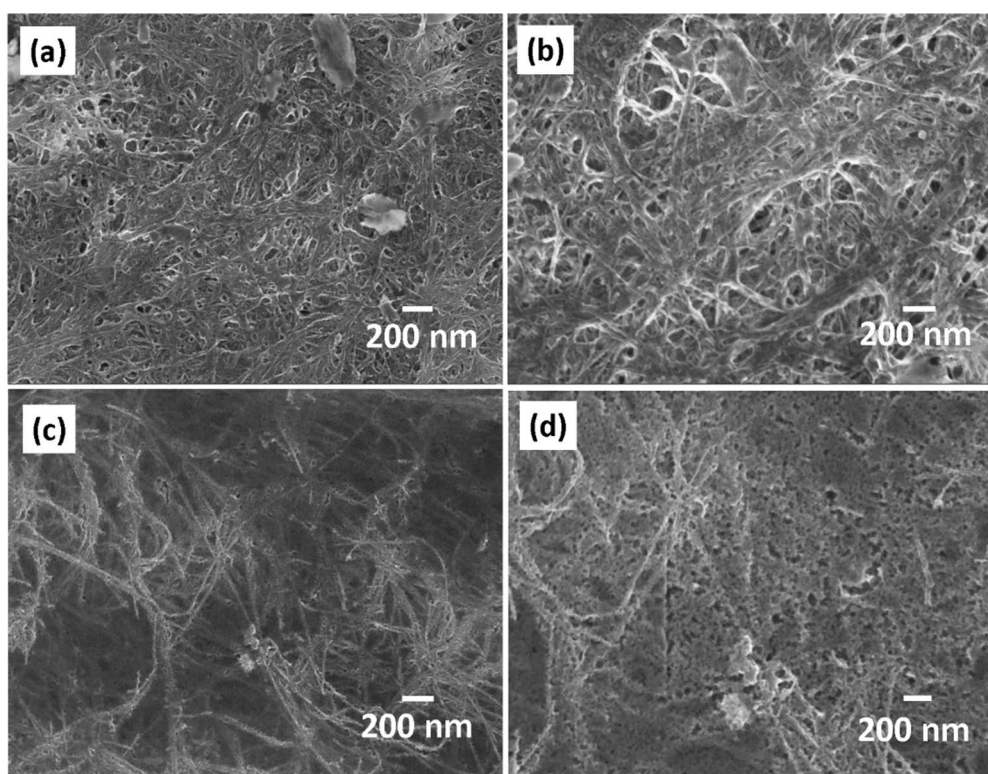
**Figure 4.** Initial charge–discharge potential profiles of the pristine CNT (a), pre-lithiated CNT for 1 min (b), pre-lithiated CNT for 3 min (c), pre-lithiated CNT for 15 min (d) and pre-lithiated CNT for 30 min (e) recorded at 2 C rate.

After a short contact time of 1 min (Figure 4a), the OCV drops to  $\sim 2.4 \text{ V}$ , which is lower than that of a pristine CNT electrode. The comparison of the first discharge capacity of  $6802 \text{ mAh g}^{-1}$  ( $2503 \text{ } \mu\text{Ah cm}^{-2}$ ) and the first charge capacity of  $843 \text{ mAh g}^{-1}$  ( $310 \text{ } \mu\text{Ah cm}^{-2}$ ) leads to an ICE of 12.38%. In good agreement with the previous CV results, the OCV of the cells utilizing a contact time of 3 min is 1.1 V vs.  $\text{Li/Li}^+$  with a first discharge capacity of  $5518 \text{ mAh g}^{-1}$  ( $2030 \text{ } \mu\text{Ah cm}^{-2}$ ) and a charge capacity of

1166 mAh g<sup>-1</sup> (429 μAh cm<sup>-2</sup>), yielding an improved ICE of 21.13%. Then, the ICE increases significantly up to 68.30% after a 15-min pre-lithiation treatment, corresponding to the first discharge and charge capacity of 1714 mAh g<sup>-1</sup> (631 μAh cm<sup>-2</sup>) and 1170 mAh g<sup>-1</sup> (431 μAh cm<sup>-2</sup>), respectively. Eventually, after pre-lithiation for 30 min, the capacity of the first discharge and charge cycles are 956 mAh g<sup>-1</sup> (352 μAh cm<sup>-2</sup>) and 1179 mAh g<sup>-1</sup> (434 μAh cm<sup>-2</sup>), respectively, resulting in a preloaded capacity of 223 mAh g<sup>-1</sup> (82 μAh cm<sup>-2</sup>) instead of capacity loss. Indeed, the charge–discharge potential profiles of the pre-lithiated CNT electrodes are consistent with the CV curves. These results suggest that longer pre-lithiation periods (i.e., 15 min) result in fully lithiated CNT electrodes and one should also note the remarkable enhancement in the ICE of the CNT electrodes. Herein, we highlight that the degree of pre-lithiation needs to be carefully controlled. From the CV and galvanostatic curves, 15-min pre-lithiation showed high capacity and high ICE value. Pre-lithiation for 30 min is assumed lead to over-lithiation which would result in lithium plating, short circuits, and also increase the side reactions during cycling due to the excessive Li-ions on the anode surface [55]. Additionally, pre-lithiation for 1 and 3 min are insufficient due to the observable SEI formation features. As a result, this SEI depletes the cyclable lithium from the cathode material in full-cell configuration.

### 3.4. Morphology of CNT Electrode after Direct Pre-Lithiation

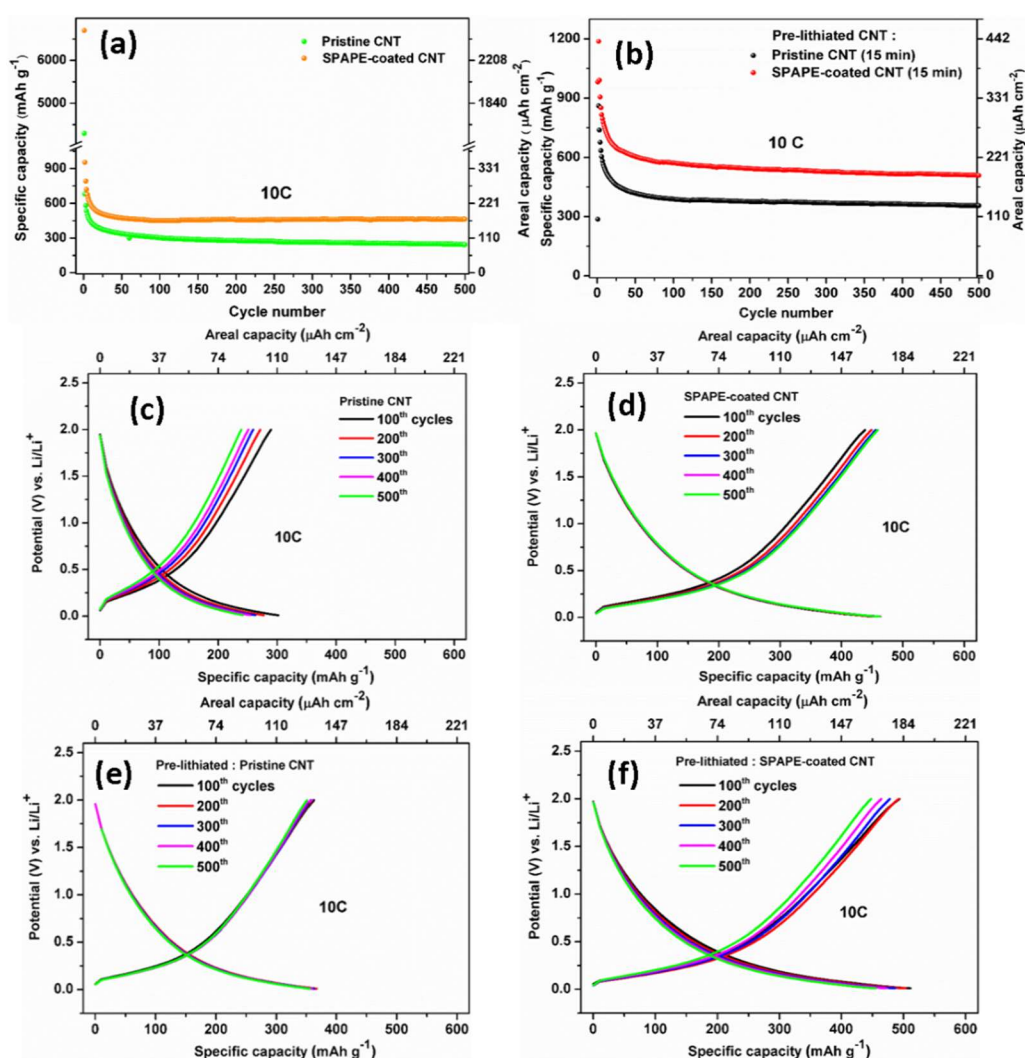
SEM images show the influence of direct pre-lithiation on the CNT surface morphology. The significant change of the morphology occurred, as displayed in Figure 5. After a very short contact time (1 min pre-lithiation), the bundled and densified morphology of CNT is preserved with only a few modifications of the CNT surfaces (Figure 5a,b). Surface examination is continued for 15 min pre-lithiation (Figure 5c,d), where the CV curves and galvanostatic cycling results support a stable SEI film formation, being pre-formed on the CNT surface upon self-discharge. Interestingly, and as expected, a polymer-like film covering the CNT surface can be assigned to the growth of the SEI thin film. After a 15 min pre-lithiation process, (CH<sub>2</sub>OCO<sub>2</sub>Li)<sub>2</sub>, polyethylene oxide, Li<sub>2</sub>CO<sub>3</sub>, LiF, Li<sub>2</sub>O, etc. products are presumably accumulated over the CNT surface due to the insertion and absorption of the Li ions into the CNT structures, in addition to the electrolyte reduction [50].



**Figure 5.** SEM images of a pre-lithiated CNT after 1 min (a,b) and pre-lithiated CNT after 15 min (c,d).

### 3.5. Electrochemical Performance in Half-Cells and Full-Cells.

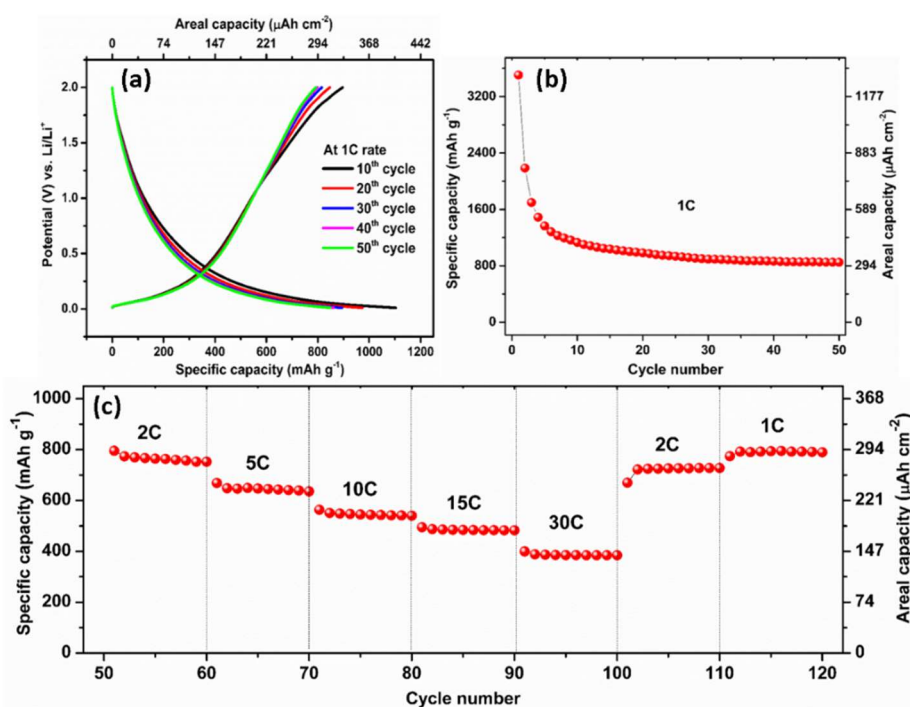
To verify the significant role of pre-lithiation prior to cell assembling and their functionalization with the polymer coating, four CNT electrodes were charged and discharged in the range of 0.01–2 V vs. Li/Li<sup>+</sup> to evaluate their cycle life. Figure 6a shows the comparison of the pristine and pre-lithiated CNT. As seen, for all samples, the CNT anodes show good cycling stability, even up to 500 cycles. For the pristine CNT samples, SPAPE-coated CNT attains higher reversible capacity of 463 mAh g<sup>-1</sup> (170  $\mu$ Ah cm<sup>-2</sup>) compared to pristine CNT (242 mAh g<sup>-1</sup>, 89  $\mu$ Ah cm<sup>-2</sup>), while for the pre-lithiated samples, the pristine CNT and SPAPE-coated CNT yielded a reversible capacity of 356 mAh g<sup>-1</sup> (131  $\mu$ Ah cm<sup>-2</sup>) and 508 mAh g<sup>-1</sup> (187  $\mu$ Ah cm<sup>-2</sup>), respectively over 500 cycles at 10 C rate (Figure 4b). Thus, it is clear that coating CNT with the polymer electrolyte via electropolymerization reaction has a beneficial impact, resulting in the improvement of the cell performance [33,46,56,57]. The enhancement can be attributed to the combination of two effects: the larger electrode/electrolyte interface resulting in improved charge transport and a better penetration of the polymer electrolyte onto the carbon nanotube surfaces [33]. The fact that SPAPE can improve the kinetics of charge/discharge has been evidenced by electrochemical impedance spectroscopy in one of our previous works [47].



**Figure 6.** Long-term cycling performance of the (a) pristine and (b) pre-lithiated CNT anodes; galvanostatic charge–discharge curves of the (c) pristine CNT, (d) SPAPE-coated CNT, (e) pre-lithiated pristine CNT and (f) pre-lithiated SPAPE-coated CNT in the potential window of 0.01–2 V at a constant current density of 1.2 mA cm<sup>-2</sup>.

By comparing the 1st and 2nd discharge capacity of both pristine and pre-lithiated samples, the importance of direct pre-lithiation prior to cell assembling can be demonstrated (Figure 6a,b). For the non-pristine CNT, the 1st and 2nd discharge capacity of the pristine CNT are  $4298 \text{ mAh g}^{-1}$  ( $1581 \text{ } \mu\text{Ah cm}^{-2}$ ) and  $681 \text{ mAh g}^{-1}$  ( $251 \text{ } \mu\text{Ah cm}^{-2}$ ), while SPAPE-coated CNT provides 1st discharge capacity of  $6699 \text{ mAh g}^{-1}$  ( $2465 \text{ } \mu\text{Ah cm}^{-2}$ ) and 2nd discharge capacity of  $955 \text{ mAh g}^{-1}$  ( $351 \text{ } \mu\text{Ah cm}^{-2}$ ). Both pristine samples exhibited very high initial capacity loss. This irreversible capacity is considered as a critical issue, notably when assembling a full-cell configuration, since lithium is irreversibly consumed after the first lithiation. In agreement with previous findings [45,54,58], the high capacity loss can be significantly reduced after pre-lithiation. For the pre-lithiated CNT, the 1st and 2nd discharge capacity of the pristine CNT are  $286 \text{ mAh g}^{-1}$  ( $97 \text{ } \mu\text{Ah cm}^{-2}$ ) and  $861 \text{ mAh g}^{-1}$  ( $317 \text{ } \mu\text{Ah cm}^{-2}$ ), while SPAPE-coated CNT gives 1st discharge capacity of  $981 \text{ mAh g}^{-1}$  ( $361 \text{ } \mu\text{Ah cm}^{-2}$ ) and 2nd discharge capacity of  $1188 \text{ mAh g}^{-1}$  ( $437 \text{ } \mu\text{Ah cm}^{-2}$ ). Figure 6c–f show the charge and discharge profiles of the CNT anodes under four fabrication conditions: pristine CNT, SPAPE-coated CNT, pre-lithiated pristine CNT and pre-lithiated SPAPE-coated CNT, respectively. The charge and discharge profiles for all samples show pronounced sloping curves, with a cell voltage of  $\sim 0.5 \text{ V}$  vs.  $\text{Li/Li}^+$ . Moreover, the overlapping of the galvanostatic curves suggests a good electrochemical reversibility of the CNT anode, particularly after direct pre-lithiation.

To further examine the rate capability performance of the pre-lithiated CNT electrodes, galvanostatic charge–discharge cycling was carried out at progressively increased current density, ranging from  $0.12$  to  $3.6 \text{ mA cm}^{-2}$ . Figure 7a,b shows the galvanostatic charge–discharge profiles of the pre-lithiated CNT with polymer coating at a potential range of  $0.01$ – $2 \text{ V}$  at  $1 \text{ C}$  for 50 cycles. After 50th cycle the coulombic efficiency reaches approximately 93%, corresponding to a charge capacity of  $792 \text{ mAh g}^{-1}$  ( $291 \text{ } \mu\text{Ah cm}^{-2}$ ) and the discharge capacity is  $850 \text{ mAh g}^{-1}$  ( $313 \text{ } \mu\text{Ah cm}^{-2}$ ) at  $1 \text{ C}$ . Their reversible capacity is  $>2$ -fold higher compared to the storage capacity of graphite ( $372 \text{ mAh g}^{-1}$ ). We note that capacity fading occurs in the few initial cycles which could possibly due to the defects on CNT, impurities and irreversible lithium loss due to the side reactions upon cycling. However, the capacity is stabilized after 10 cycles and compared to pristine CNT which showed a severe capacity decay ( $\sim 10$  times) [33], the pre-lithiated CNTs show better cycling performance.

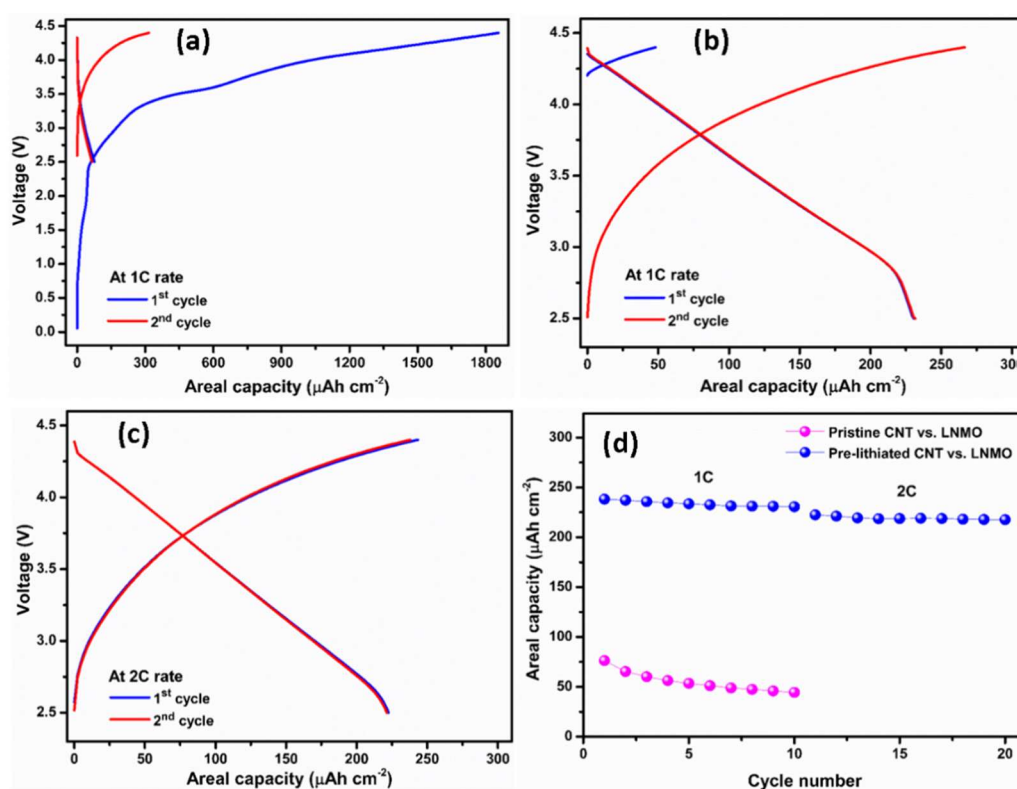


**Figure 7.** Typical galvanostatic charge–discharge potential profiles vs.  $\text{Li/Li}^+$  for the 10th, 20th, 30th, 40th, and 50th cycle against the capacity of the pre-lithiated CNT electrode for 15 min at  $1 \text{ C}$  rate (a), rate capabilities of the pre-lithiated CNT electrode for 15 min at  $1 \text{ C}$  rate (b) and multiple C-rates (c).



Remarkably, even at stepwise accelerated rate, the pre-lithiated CNT could still provide excellent capacities of  $764 \text{ mAh g}^{-1}$  ( $281 \text{ } \mu\text{Ah cm}^{-2}$ ) at 2 C,  $647 \text{ mAh g}^{-1}$  ( $238 \text{ } \mu\text{Ah cm}^{-2}$ ) at 5 C,  $545 \text{ mAh g}^{-1}$  ( $200 \text{ } \mu\text{Ah cm}^{-2}$ ) at 10 C,  $484 \text{ mAh g}^{-1}$  ( $178 \text{ } \mu\text{Ah cm}^{-2}$ ) at 15 C and  $385 \text{ mAh g}^{-1}$  ( $142 \text{ } \mu\text{Ah cm}^{-2}$ ) at 30 C (Figure 7c). Indeed, when the current density turned back from high to low current densities, the capacity can be greatly recovered over 120 cycles. Herein, we demonstrated that a simple direct pre-lithiation can improve the electrochemical performance of the flexible CNT anode by diminishing their extensive and large irreversible capacity, as well as providing a lithium supply to compensate the lithium loss during cycling. As a result, the CNT electrode shows good cycling stability over 500 cycles and excellent rate capabilities, even at high C-rates.

The promising performances of the CNT suggested their use as potential flexible anode material for application in full lithium-ion batteries using high-voltage cathode material, i.e., LNMO, in order to achieve high energy density. The galvanostatic charge–discharge profiles of the full-cell battery using both pristine CNT and pre-lithiated CNT as anodes are presented in the Figure 8. The battery was cycled at 1 C in the potential window of 2.5–4.4 V. Since the mass limitation is controlled by CNT, the capacity is reported versus the anode material and the mass was calculated considering a porosity of 70%. In the first cycle, the pristine CNT cell exhibits an initial charge capacity of  $1856 \text{ } \mu\text{Ah cm}^{-2}$  and a discharge capacity of  $76 \text{ } \mu\text{Ah cm}^{-2}$  with a relatively low coulombic efficiency of ca. 4.1% (Figure 8a), ascribed to the abovementioned SEI formation at the initial charging. This SEI film reduced the amount of active lithium ion upon cycling.



**Figure 8.** Typical galvanostatic charge–discharge potential profiles for the 1st and 2nd cycle at 1 C rate for (a) pristine CNT–LNMO, (b) pre-lithiated CNT–LNMO, (c) galvanostatic charge–discharge profiles of pre-lithiated CNT–LNMO at 2 C rate, (d) cycling performance of the pristine and pre-lithiated CNT anodes in the full-cell configuration.

In contrast, as seen in Figure 8b, the pre-lithiated CNT cell gives a superior electrochemical performance, delivering a discharge capacity of  $238 \text{ } \mu\text{Ah cm}^{-2}$  with a cell voltage of about 3.75 V at 1 C. Another crucial point is that the OCV for the pristine CNT starts from ca. 0 V, while the OCV for the pre-lithiated CNT is ca. 4.2 V which means the SEI layer has been pre-formed on the CNT surface. For the pristine CNT, the capacity decreases 42% after 10th cycle at 1 C. The reason for this is likely

ascribed to the relatively low coulombic efficiency of the pristine CNT in the half-cell (11.57%). At 2 C (Figure 8c), the pre-lithiated CNT reaches capacity of 223  $\mu\text{Ah cm}^{-2}$ . The important differences between pristine CNT and pre-lithiated CNT became obvious after 10 cycles charge–discharge cycling as seen in Figure 8d. In the full-cell configuration, the capacity of pre-lithiated CNT is 4 times higher compared to pristine CNT.

#### 4. Conclusions

In summary, the electropolymerization of SPAPE polymer electrolyte into carbon nanotubes has been conducted by cyclic voltammetry. The enhanced electrochemical performance of SPAPE-coated CNT compared to pristine ones, due to the high electrode/electrolyte interface area leads to the improved charge transfer. In addition, this study also clearly showed the positive effect of direct pre-lithiation to suppress the initial irreversible capacity of CNT. Light-weight free-standing and flexible CNT without any binder and conductive additives have been successfully utilized as anode materials in Li-ion batteries, demonstrating both a stable and a high reversible capacity of 508  $\text{mAh g}^{-1}$  (187  $\mu\text{Ah cm}^{-2}$ ) at a 10 C rate over 500 cycles. Pre-lithiation of CNT via a self-discharge mechanism improves the first cycle coulombic efficiency from 11.57% to 68.30% after 15 min pre-lithiation period and reaches >100% subsequent to 30 min of pre-lithiation period. Moreover, by coupling the CNT anode with a high voltage LNMO spinel cathode, a 3.75 V full-cell presented a high capacity of 238  $\mu\text{Ah cm}^{-2}$  at a 1 C rate with the coulombic efficiency of ca. 90% in the initial cycle. This simple, fast and inexpensive method enables the achievement of high capacity flexible anodes for micro-batteries.

**Author Contributions:** V.A.S. Writing—original draft preparation. V.A.S. and N.Y. investigation. T.D., Y.E.-E. and F.V. conceptualization, supervision and writing—review & editing.

**Funding:** This research was funded by the Planning & Budgeting Committee of the Council of High Education and the Prime Minister’s Office of Israel, in the framework of the INREP project and the support and funding the Grand Energy Technion Program (GTEP).

**Acknowledgments:** We acknowledge the Région SUD for financial support. We are grateful to the University of Roma Tor Vergata for providing the SPAPE monomer and Tortech NanoFibers Ltd. (Israel) for producing and supplying the CNT.

**Conflicts of Interest:** The authors declare no conflict of interest.

#### References

1. Li, H.; Wang, Z.; Chen, L.; Huang, X. Research on Advanced Materials for Li-ion Batteries. *Adv. Mater.* **2009**, *21*, 4593–4607.
2. Sugawati, V.A.; Vacandio, F.; Perrin-Pellegrino, C.; Galeeva, A.; Kurbatov, A.P.; Djenizian, T. Sputtered Porous Li-Fe-P-O Film Cathodes Prepared by Radio Frequency Sputtering for Li-ion Microbatteries. *Sci. Rep.* **2019**, *9*, 1–12.
3. Nitta, N.; Wu, F.; Lee, J.T.; Yushin, G. Li-ion battery materials: Present and future. *Mater. Today* **2015**, *18*, 252–264.
4. Kumar, R.; Matsuo, R.; Kishida, K.; Abdel-Galeil, M.M.; Suda, Y.; Matsuda, A. Homogeneous reduced graphene oxide supported NiO-MnO<sub>2</sub> ternary hybrids for electrode material with improved capacitive performance. *Electrochim. Acta* **2019**, *303*, 246–256.
5. Liu, X.-M.; Dong Huang, Z.; Woon Oh, S.; Zhang, B.; Ma, P.-C.; Yuen, M.M.F.; Kim, J.-K. Carbon nanotube (CNT)-based composites as electrode material for rechargeable Li-ion batteries: A review. *Compos. Sci. Technol.* **2012**, *72*, 121–144.
6. Li, L.; Yang, H.; Zhou, D.; Zhou, Y. Progress in Application of CNTs in Lithium-Ion Batteries. *J. Nanomater.* **2014**, doi:10.1155/2014/187891.
7. Teprovich, J.A.; Weeks, J.A.; Ward, P.A.; Tinkey, S.C.; Huang, C.; Zhou, J.; Zidan, R.; Jena, P. Hydrogenated C60 as High-Capacity Stable Anode Materials for Li Ion Batteries. *ACS Appl. Energy Mater.* **2019**, *2*, 6453–6460.



8. Qiao, L.; Sun, X.; Yang, Z.; Wang, X.; Wang, Q.; He, D. Network structures of fullerene-like carbon core/nano-crystalline silicon shell nanofibers as anode material for lithium-ion batteries. *Carbon* **2013**, *54*, 29–35.
9. Kumar, R.; Sahoo, S.; Joanni, E.; Singh, R.K.; Tan, W.K.; Kar, K.K.; Matsuda, A. Recent progress in the synthesis of graphene and derived materials for next generation electrodes of high performance lithium ion batteries. *Prog. Energy Combust. Sci.* **2019**, *75*, 100786.
10. Yadav, S.K.; Kumar, R.; Sundramoorthy, A.K.; Singh, R.K.; Koo, C.M. Simultaneous reduction and covalent grafting of polythiophene on graphene oxide sheets for excellent capacitance retention. *RSC Adv.* **2016**, *6*, 52945–52949.
11. Wang, W.; Song, X.; Gu, C.; Liu, D.; Liu, J.; Huang, J. A high-capacity NiCo<sub>2</sub>O<sub>4</sub>@reduced graphene oxide nanocomposite Li-ion battery anode. *J. Alloys Compd.* **2018**, *741*, 223–230.
12. Kumar, R.; Singh, R.K.; Alaferdov, A.V.; Moshkalev, S.A. Rapid and controllable synthesis of Fe<sub>3</sub>O<sub>4</sub> octahedral nanocrystals embedded-reduced graphene oxide using microwave irradiation for high performance lithium-ion batteries. *Electrochim. Acta* **2018**, *281*, 78–87.
13. Zhang, C.; Yu, J.-S. Morphology-Tuned Synthesis of NiCo<sub>2</sub>O<sub>4</sub>-Coated 3D Graphene Architectures Used as Binder-Free Electrodes for Lithium-Ion Batteries. *Chem. Eur. J.* **2016**, *22*, 4422–4430.
14. Chen, Y.; Zhu, J.; Qu, B.; Lu, B.; Xu, Z. Graphene improving lithium-ion battery performance by construction of NiCo<sub>2</sub>O<sub>4</sub>/graphene hybrid nanosheet arrays. *Nano Energy* **2014**, *3*, 88–94.
15. Wang, C.; Wang, X.; Lin, C.; Zhao, X.S. Lithium Titanate Cuboid Arrays Grown on Carbon Fiber Cloth for High-Rate Flexible Lithium-Ion Batteries. *Small* **2019**, *15*, 1902183.
16. Zhang, Z.; Zhang, M.; Lu, P.; Chen, Q.; Wang, H.; Liu, Q. CuO nanorods growth on folded Cu foil as integrated electrodes with high areal capacity for flexible Li-ion batteries. *J. Alloys Compd.* **2019**, *809*, 151823.
17. Nasreldin, M.; Delattre, R.; Ramuz, M.; Lahuec, C.; Djenizian, T.; de Bougrenet de la Tocnaye, J.-L. Flexible Micro-Battery for Powering Smart Contact Lens. *Sensors* **2019**, *19*, 2062.
18. Yitzhack, N.; Auinat, M.; Sezin, N.; Ein-Eli, Y. Carbon nanotube tissue as anode current collector for flexible Li-ion batteries—Understanding the controlling parameters influencing the electrochemical performance. *APL Mater.* **2018**, *6*, 111102.
19. Yehezkel, S.; Auinat, M.; Sezin, N.; Starosvetsky, D.; Ein-Eli, Y. Distinct Copper Electrodeposited Carbon Nanotubes (CNT) Tissues as Anode Current Collectors in Li-ion Battery. *Electrochim. Acta* **2017**, *229*, 404–414.
20. Cai, M.; Sun, X.; Chen, W.; Qiu, Z.; Chen, L.; Li, X.; Wang, J.; Liu, Z.; Nie, Y. Performance of lithium-ion capacitors using pre-lithiated multiwalled carbon nanotubes/graphite composite as negative electrode. *J. Mater. Sci.* **2018**, *53*, 749–758.
21. Li, X.; Liu, J.; Zhang, Y.; Li, Y.; Liu, H.; Meng, X.; Yang, J.; Geng, D.; Wang, D.; Li, R.; et al. High concentration nitrogen doped carbon nanotube anodes with superior Li<sup>+</sup> storage performance for lithium rechargeable battery application. *J. Power Sources* **2012**, *197*, 238–245.
22. Aguiló-Aguayo, N.; Amade, R.; Hussain, S.; Bertran, E.; Bechtold, T. New Three-Dimensional Porous Electrode Concept: Vertically-Aligned Carbon Nanotubes Directly Grown on Embroidered Copper Structures. *Nanomaterials* **2017**, *7*, 438.
23. Peng, X.-X.; Qiao, X.; Luo, S.; Yao, J.-A.; Zhang, Y.-F.; Du, F.-P. Modulating Carrier Type for Enhanced Thermoelectric Performance of Single-Walled Carbon Nanotubes/Polyethyleneimine Composites. *Polymers* **2019**, *11*, 1295.
24. Wang, F.; Feng, L.; Lu, M. Mechanical Properties of Multi-Walled Carbon Nanotube/Waterborne Polyurethane Conductive Coatings Prepared by Electrostatic Spraying. *Polymers* **2019**, *11*, 714.
25. Kumar, R.; Singh, R.K.; Tiwari, V.S.; Yadav, A.; Savu, R.; Vaz, A.R.; Moshkalev, S.A. Enhanced magnetic performance of iron oxide nanoparticles anchored pristine/ N-doped multi-walled carbon nanotubes by microwave-assisted approach. *J. Alloys Compd.* **2017**, *695*, 1793–1801.
26. Kumar, R.; Yadav, R.M.; Awasthi, K.; Tiwari, R.S.; Srivastava, O.N. Effect of nitrogen variation on the synthesis of vertically aligned bamboo-shaped c-n nanotubes using sunflower oil. *Int. J. Nanosci.* **2011**, *10*, 809–813.
27. Gao, H.; Hou, F.; Zheng, X.; Liu, J.; Guo, A.; Yang, D.; Gong, Y. Electrochemical property studies of carbon nanotube films fabricated by CVD method as anode materials for lithium-ion battery applications. *Vacuum* **2015**, *112*, 1–4.

28. Hou, G.; Chauhan, D.; Ng, V.; Xu, C.; Yin, Z.; Paine, M.; Su, R.; Shanov, V.; Mast, D.; Schulz, M.; et al. Gas phase pyrolysis synthesis of carbon nanotubes at high temperature. *Mater. Des.* **2017**, *132*, 112–118.
29. Arora, N.; Sharma, N.N. Arc discharge synthesis of carbon nanotubes: Comprehensive review. *Diam. Relat. Mater.* **2014**, *50*, 135–150.
30. Kumar, R.; Singh, R.K.; Dubey, P.K.; Yadav, R.M.; Singh, D.P.; Tiwari, R.S.; Srivastava, O.N. Highly zone-dependent synthesis of different carbon nanostructures using plasma-enhanced arc discharge technique. *J. Nanopart. Res.* **2015**, *17*, 24.
31. Chrzanowska, J.; Hoffman, J.; Małolepszy, A.; Mazurkiewicz, M.; Kowalewski, T.A.; Szymanski, Z.; Stobinski, L. Synthesis of carbon nanotubes by the laser ablation method: Effect of laser wavelength. *Phys. Status Solidi B* **2015**, *252*, 1860–1867.
32. Schwandt, C.; Dimitrov, A.T.; Fray, D.J. High-yield synthesis of multi-walled carbon nanotubes from graphite by molten salt electrolysis. *Carbon* **2012**, *50*, 1311–1315.
33. Sugawati, V.A.; Vacandio, F.; Ein-Eli, Y.; Djenizian, T. Electrodeposition of polymer electrolyte into carbon nanotube tissues for high performance flexible Li-ion microbatteries. *APL Mater.* **2019**, *7*, 031506.
34. Yoon, S.; Lee, S.; Kim, S.; Park, K.-W.; Cho, D.; Jeong, Y. Carbon nanotube film anodes for flexible lithium ion batteries. *J. Power Sources* **2015**, *279*, 495–501.
35. Zou, L.; Lv, R.; Kang, F.; Gan, L.; Shen, W. Preparation and application of bamboo-like carbon nanotubes in lithium ion batteries. *J. Power Sources* **2008**, *184*, 566–569.
36. Welna, D.T.; Qu, L.; Taylor, B.E.; Dai, L.; Durstock, M.F. Vertically aligned carbon nanotube electrodes for lithium-ion batteries. *J. Power Sources* **2011**, *196*, 1455–1460.
37. Yehezkel, S.; Auinat, M.; Sezin, N.; Starosvetsky, D.; Ein-Eli, Y. Bundled and densified carbon nanotubes (CNT) fabrics as flexible ultra-light weight Li-ion battery anode current collectors. *J. Power Sources* **2016**, *312*, 109–115.
38. de las Casas, C.; Li, W. A review of application of carbon nanotubes for lithium ion battery anode material. *J. Power Sources* **2012**, *208*, 74–85.
39. Lee, S.; Song, H.; Hwang, J.Y.; Jeong, Y. Directly-prelithiated carbon nanotube film for high-performance flexible lithium-ion battery electrodes. *Fibers Polym.* **2017**, *18*, 2334–2341.
40. Holtstiege, F.; Bärman, P.; Nölle, R.; Winter, M.; Placke, T. Pre-Lithiation Strategies for Rechargeable Energy Storage Technologies: Concepts, Promises and Challenges. *Batteries* **2018**, *4*, 4.
41. Di Lecce, D.; Andreotti, P.; Boni, M.; Gasparro, G.; Rizzati, G.; Hwang, J.-Y.; Sun, Y.-K.; Hassoun, J. Multiwalled Carbon Nanotubes Anode in Lithium-Ion Battery with  $\text{LiCoO}_2$ ,  $\text{Li}[\text{Ni}_{1/3}\text{Co}_{1/3}\text{Mn}_{1/3}]\text{O}_2$ , and  $\text{LiFe}_{1/4}\text{Mn}_{1/2}\text{Co}_{1/4}\text{PO}_4$  Cathodes. *ACS Sustain. Chem. Eng.* **2018**, *6*, 3225–3232.
42. Seong, I.W.; Kim, K.T.; Yoon, W.Y. Electrochemical behavior of a lithium-pre-doped carbon-coated silicon monoxide anode cell. *J. Power Sources* **2009**, *189*, 511–514.
43. Liu, N.; Hu, L.; McDowell, M.T.; Jackson, A.; Cui, Y. Prelithiated silicon nanowires as an anode for lithium ion batteries. *ACS Nano* **2011**, *5*, 6487–6493.
44. Scott, M.G.; Whitehead, A.H.; Owen, J.R. Chemical Formation of a Solid Electrolyte Interface on the Carbon Electrode of a Li-Ion Cell. *J. Electrochem. Soc.* **1998**, *145*, 1506–1510.
45. Wu, Y.; Yokoshima, T.; Nara, H.; Momma, T.; Osaka, T. A pre-lithiation method for sulfur cathode used for future lithium metal free full battery. *J. Power Sources* **2017**, *342*, 537–545.
46. Plylahan, N.; Letiche, M.; Barr, M.K.S.; Djenizian, T. All-solid-state lithium-ion batteries based on self-supported titania nanotubes. *Electrochem. Commun.* **2014**, *43*, 121–124.
47. Ferrari, I.V.; Braglia, M.; Djenizian, T.; Knauth, P.; Di Vona, M.L. Electrochemically engineered single Li-ion conducting solid polymer electrolyte on titania nanotubes for microbatteries. *J. Power Sources* **2017**, *353*, 95–103.
48. Dresselhaus, M.S.; Dresselhaus, G.; Saito, R.; Jorio, A. Raman spectroscopy of carbon nanotubes. *Phys. Rep.* **2005**, *409*, 47–99.
49. Dresselhaus, M.S.; Jorio, A.; Hofmann, M.; Dresselhaus, G.; Saito, R. Perspectives on Carbon Nanotubes and Graphene Raman Spectroscopy. *Nano Lett.* **2010**, *10*, 751–758.
50. Aravindan, V.; Lee, Y.-S.; Madhavi, S. Best Practices for Mitigating Irreversible Capacity Loss of Negative Electrodes in Li-Ion Batteries. *Adv. Energy Mater.* **2017**, *7*, 1602607.
51. Zhao, J.; Lu, Z.; Liu, N.; Lee, H.-W.; McDowell, M.T.; Cui, Y. Dry-air-stable lithium silicide–lithium oxide core–shell nanoparticles as high-capacity prelithiation reagents. *Nat. Commun.* **2014**, *5*, 5088.

52. Wan, Y.; Wang, L.; Chen, Y.; Xu, X.; Wang, Y.; Teng, C.; Zhou, D.; Chen, Z. A high-performance tin dioxide@carbon anode with a super high initial coulombic efficiency via a primary cell prelithiation process. *J. Alloys Compd.* **2018**, *740*, 830–835.
53. Sun, H.; Xin, G.; Hu, T.; Yu, M.; Shao, D.; Sun, X.; Lian, J. High-rate lithiation-induced reactivation of mesoporous hollow spheres for long-lived lithium-ion batteries. *Nat. Commun.* **2014**, *5*, 1–8.
54. Sun, Y.; Lee, H.-W.; Seh, Z.W.; Liu, N.; Sun, J.; Li, Y.; Cui, Y. High-capacity battery cathode prelithiation to offset initial lithium loss. *Nat. Energy* **2016**, *1*, 15008.
55. Abe, Y.; Saito, T.; Kumagai, S. Effect of Prelithiation Process for Hard Carbon Negative Electrode on the Rate and Cycling Behaviors of Lithium-Ion Batteries. *Batteries* **2018**, *4*, 71.
56. Kyeremateng, N.A.; Dumur, F.; Knauth, P.; Pecquenard, B.; Djenizian, T. Electropolymerization of copolymer electrolyte into titania nanotube electrodes for high-performance 3D microbatteries. *Electrochem. Commun.* **2011**, *13*, 894–897.
57. Sugiawati, V.A.; Vacandio, F.; Djenizian, T.; Galeyeva, A.; Kurbatov, A.P. Superior Electrochemical Performance of Electropolymerized Self-Organized TiO<sub>2</sub> Nanotubes Fabricated by Anodization of Ti Grid. *Front. Phys.* **2019**, *7*, doi:10.3389/fphy.2019.00179.
58. Vargas, Ó.; Caballero, Á.; Morales, J.; Rodríguez-Castellón, E. Contribution to the Understanding of Capacity Fading in Graphene Nanosheets Acting as an Anode in Full Li-Ion Batteries. *ACS Appl. Mater. Interfaces* **2014**, *6*, 3290–3298.



© 2020 by the authors. Submitted for possible open access publication under the terms and conditions of the Creative Commons Attribution (CC BY) license (<http://creativecommons.org/licenses/by/4.0/>).