



# Modification of outer membrane permeability and alteration of LPS in veterinary enterotoxigenic *Escherichia coli*

Anne Davin-Regli, Véronique Guérin-Faublée, Jean-Marie Pagès

## ► To cite this version:

Anne Davin-Regli, Véronique Guérin-Faublée, Jean-Marie Pagès. Modification of outer membrane permeability and alteration of LPS in veterinary enterotoxigenic *Escherichia coli*. *Research in Veterinary Science*, 2019, 124, pp.321-327. 10.1016/j.rvsc.2019.04.011 . hal-02649532

**HAL Id: hal-02649532**

**<https://amu.hal.science/hal-02649532>**

Submitted on 2 Jun 2020

**HAL** is a multi-disciplinary open access archive for the deposit and dissemination of scientific research documents, whether they are published or not. The documents may come from teaching and research institutions in France or abroad, or from public or private research centers.

L'archive ouverte pluridisciplinaire **HAL**, est destinée au dépôt et à la diffusion de documents scientifiques de niveau recherche, publiés ou non, émanant des établissements d'enseignement et de recherche français ou étrangers, des laboratoires publics ou privés.

# **MODIFICATION OF OUTER MEMBRANE PERMEABILITY AND ALTERATION OF LPS IN VETERINARY ENTEROTOXIGENIC *ESCHERICHIA COLI*.**

Anne Davin-Regli<sup>a</sup>, Véronique Guerin-Faublée<sup>b</sup>, Jean-Marie Pagès<sup>a</sup>

<sup>a</sup> Aix Marseille Univ, INSERM, SSA, IRBA, MCT, Marseille, France.

UMR\_MD1, U-1261, Facultés de Pharmacie et de Médecine, Aix-Marseille Univ, 13385  
Marseille Cedex 05, France

<sup>b</sup>UMR Vet-Agro-Sup Campus Vétérinaire de Lyon. Département de santé publique vétérinaire,  
Marcy l'Etoile, France. [veronique.guerinfauble@vetagro-sup.fr](mailto:veronique.guerinfauble@vetagro-sup.fr)

**Corresponding author:** Dr Davin-Regli Anne; **mail:** [anne-veronique.regli@univ-amu.fr](mailto:anne-veronique.regli@univ-amu.fr)

**Keywords:** Porins, antibiotic resistance, ETEC, LPS.

## ABSTRACT

Enterotoxigenic *Escherichia coli* (ETEC) is a worrying cause of diarrhoea in calves and the drug multiresistance phenotype concerning various antibiotic families are of concern.

Resistance mechanisms associated with envelope changes (porin expression, efflux pump overexpression, lipopolysaccharide (LPS) modification) were studied in 14 ETEC isolates selected for their resistance. We performed determinations of (i) antimicrobials Minimal Inhibitory Concentrations with or without the efflux pump inhibitor phenylalanine arginine  $\beta$ -naphthylamide; (ii) colistin and polymyxin MICs with and without EDTA, (iii) intracellular accumulation of chloramphenicol in presence of an energy uncoupler of pump energy, (iv) and immunodetection of porins and evaluation of porin trimers thermostability.

Results indicated that 9 strains presented significant efflux mechanisms overexpression, among them 8 were resistant to colistin and polymyxin B due to a modification of LPS structure as evidenced by EDTA effect and silver staining electrophoresis. The high resistant strains to colistin and polymyxin exhibited identical LPS patterns. Studies of *E. coli* porins indicated that the majority of strains didn't show modification in their amount, however analysis of porin thermostability showed that porin trimers of some resistant strains were relatively heat-labile, suggesting a misassembly of the functional trimer. The multidrug resistance (MDR) phenotypes detected in these selected ETEC corresponded to association of LPS modifications, aberrant assembly of porin trimers and active efflux which drastically alter the antibiotic activity currently used to combat enteric infections caused by this pathogen.

## • INTRODUCTION

In veterinary medicine, infectious diarrhoea of neonatal calves is associated with high mortality and economic concern that requires the use of broad spectrum antimicrobials associations [14, 36, 40]. One of the commonly reported causative enteropathogen is the enterotoxigenic *Escherichia coli* (ETEC) and several reports have revealed that calves are rapidly colonized by multidrug resistant antibiotic (MDR) strains of *E. coli* within days of birth as the consequence of use of antimicrobials in food animal [14, 15, 24, 26, 37]. Among these strains,  $\beta$ -lactam resistance is increasing due to diverse  $\beta$ -lactamases and plasmid-mediated cephalosporin (AmpC type) resistance [8, 10, 24]. Moreover, most of *E. coli* strains isolated in diarrheic calves show multiresistance to structurally-unrelated antimicrobials [2, 6, 14]. Until now colistin and fluoroquinolones are the antimicrobial agents used in this pathology because most of the isolated *E. coli* strains remained susceptible to these molecules [23, 36, 37]. However, in the last decade polymyxin resistance has emerged in animals and human isolates [2, 4, 10, 15, 24, 44, 48]. Recently, it has been shown that in populations of enteropathogenic strains isolated in a context of neonatal calf diarrhoea, 61-65 % were resistant to one or more substances and 28-77 % were multi-resistant [14, 20, 22, 47].

The aim of the present study was to evaluate the involvement of resistance mechanisms associated to outer membrane (OM) permeability which can affect polymyxins, fluoroquinolones and chloramphenicol in a population of multiresistant ETEC isolated from diarrheic dairy calves.

- **MATERIAL AND METHODS**

- **Bacterial strains and growth media**

Fourteen ETEC strains, belonging to the *E. coli* strain collection (2006, various departments of France) isolated in faecal samples of dairy neonatal calves showing diarrhoea prior any antibiotic therapy, were selected according to their noticeable resistance against colistin (Table 1). They were previously assayed for their  $\beta$ -lactamases expression by PCR (TEM, SHV, OXA) and sequenced [41]. Strains 42 and 73 harboured TEM1, OXA30 and overexpressed chromosomal AmpC cephalosporinase, due to *ampC* promoter mutation. The susceptible strain 39 was used as control strain during the determination of Minimal Inhibitory Concentrations (MICs) for the various isolates. The strain *E. coli* JM 109 that expresses OmpC and OmpF porins was used as control for protein assays. Bacteria were routinely grown in Luria Bertani (LB) or Muller-Hinton (MH) (BioMérieux) broth, 24h at 37°C.

- **Antibiotic susceptibility**

Susceptibilities (MIC) to five structurally-unrelated classes of bacterial drugs were carried out using a two fold broth microdilution method in MH broth according to the guidelines of the French antibiogram committee of Society for Microbiology to evaluate the resistance phenotype (<http://www.sfn.asso.fr/nouv/general.php?pa=2>). The results were scored after 18h at 37°C and are expressed as MICs. The MIC was determined as the lowest concentration that inhibited visible growth. Values are medians of at least three independent experiments and are presented in mg/L.

The following antimicrobials were selected: ofloxacin, ciprofloxacin, nalidixic acid, chloramphenicol, gentamicin and polymyxins (colistin, polymyxin B) were purchased from Sigma (Saint Quentin Fallavier, France) and ceftiofur was a gift of Sanofi-Aventis (France).

The effect of efflux pumps on susceptibilities were carried out using a fixed concentration (50 $\mu$ M) of the efflux pump inhibitor Phenylalanine Arginine- $\beta$ -Naphthylamide (PA $\beta$ N) (Sigma) during determination of quinolones, cefpirome, gentamicin and chloramphenicol activities [18, 28]. Susceptibility to colistin and polymyxin B were determined with two fixed concentrations (0.1 and 0.5 mM) of the cationic chelator ethylenediaminetetraacetate (EDTA) (Sigma) that chelates magnesium present in lipopolysaccharide (LPS) chains and sensitizes Gram-negative bacteria to membranotropic antimicrobials [1]. Values are medians of at least three independent experiments and are presented in mg/L.

- **Outer membrane protein immunoblotting and lipopolysaccharide detection**

Whole bacterial proteins corresponding to standardized cell pellets collected from exponential-phase bacteria in LB broth were solubilized in loading buffer at 96°C. Samples (0.02 optical density at 600 nm) containing OM porins were separated on SDS-PAGE gel and Western immunoblots were routinely prepared by electrotransfer onto nitrocellulose sheets. The sheets were incubated sequentially: (i) with polyclonal antibodies directed against denatured porin OmpC and OmpF, and (ii) with an anti- rabbit IgG antibody conjugated to alkaline phosphatase [12, 30, 42]. About LPS assays, the profile was analysed after electrophoresis on SDS-PAGE gel with tricine buffer and gel was stained by silver staining [44, 46].

- **Chloramphenicol accumulation**

Accumulation of [ $^{14}$ C] chloramphenicol in  $2 \times 10^{10}$  colony-forming units/mL was assayed in sodium phosphate buffer (50mM; pH7) supplemented with 5mM MgCl<sub>2</sub> according to the method described previously [9]. In order to collapse the membrane energy which is the energy-driven source of the AcrAB efflux pump, 50 $\mu$ M carbonyl cyanide *m*-

chlorophenylhydrazine (CCCP), was added 10 min before the radio-labelled chloramphenicol [9, 31]. Samples were removed at set intervals and were filtered and washed. The filters were dried and radioactivity was measured with a liquid scintillation counter (Perkin-Elmer Life and Analytical Sciences, Wellesley, MA). Values are expressed as counts per minute per unit of optical density [9].

## • RESULTS AND DISCUSSION

### • Susceptibility to colistin and polymyxin B, and lipopolysaccharide patterns

Eight out of fourteen strains (17, 20, 30, 40, 48, 50, 75 and 98) exhibited a resistance to both colistin and polymyxin B (Table 1). The MIC values were significantly higher for colistin (64 to 8 µg/mL) than for polymyxin B (16 to 2 µg/mL). The remaining strains, 26, 39, 42, 73, 80 and 96 were susceptible to both antimicrobials with MIC values between 0.5 to 2 µg/mL. Importantly, the susceptibility of resistant strains to both colistin and polymyxin B, was restored totally or partially by EDTA, a chelator of magnesium cation. Whatever the concentration tested, 0.1 and 0.5 mM (data not shown), the MICs were reduced by two to five folds except for strains 39 and 80 (Table 1).

As polymyxins affect the OM structure, analysis of the LPS patterns of the *E. coli* strains was carried out [1, 17, 45]. The Fig. 1 presented the different LPS profiles and their modifications suggest a significant modification of the LPS structure in these resistant strains. Five strains, 26, 30, 39, 80 and 96 were grouped in cluster I containing the polymyxin susceptible strains, with the exception of the strain 30. Strains 40, 48, 50 and 75 were aggregated in cluster II in which 40, 48 and 75 exhibited marked low colistin-polymyxin susceptibility. Strains 42, 73 and 98 belonged to cluster III and the two strains 17 and 20 were different. The protective barrier afforded by OM is mainly due to the LPS structure constituting the outer leaflet of the

membrane. Alterations of LPS structure associated or not with over expression of multidrug efflux pumps contribute to a multiresistant phenotype constitution [11, 16, 32, 35, 50]. In two third isolates studied, the high resistance to polymyxin B and colistin was associated with modifications of LPS altering the activity of both antimicrobials. The decrease in anionic surface charges due to substitution of phosphate groups in LPS accounted for reduced binding sites for the cationic polymyxin B and colistin [49]. Colistin resistance can result from addition of cationic groups to the LPS, loss of LPS production by mutations, deletions or insertion sequence in genes involved in the lipid A biosynthesis [34]. A large panel of genes and operons are involved in qualitative modification of the LPS including genes and operons coding for enzymes that are directly involved in LPS modifications (*pmrC*, *pmrE* genes and the *pmrHFIJKLM* operon) and regulatory genes (*pmrAB*, *phoPQ* two-component systems and their regulators: *mgrB* gene, *crrAB*) [27, 34, 39]. The recent discovered plasmid-mediated *mcr-1* gene, responsible for horizontal transfer of colistin resistance, encodes the MCR-1 protein, a phosphoethanolamine transferase which can add a phosphoethanolamine to lipid A, generating a more cationic LPS [39]. An involvement of LPS sizes in the permeation of lipophilic drugs have been demonstrated [50]. Finally, few studies have shown that efflux pumps can also contribute to polymyxin resistance [34]. In *E. coli* isolates that exhibited different LPS patterns, the activity of polymyxin B and colistin was increased by EDTA that weakened the OM and restored the activity of polymyxins [1, 17]. These data are in agreement with previous studies where EDTA is able to destabilize the OM increasing polymyxin and colistin uptake [21, 32, 45]. Moreover, this conferred resistance was stable since no revertant was obtained in a colistin free medium and this suggests the selection of mutations and activation of regulatory systems such as PmrA/PmrB and PhoP/PhoQ by environmental stresses [38, 49].



- **Susceptibility to a range of structurally-unrelated antimicrobials**

The majority of the strains showed high MICs for nalidixic acid, ciprofloxacin, ofloxacin and chloramphenicol (Table 2). Quinolones are able to self-promoted their uptake by diffusion across the LPS barrier [3]. Consequently, the EDTA increased the activity of nalidixic acid on resistant strains and MICs decreased about three fold (data not shown). This fits in with the highly resistance of these strains to colistin and polymyxin B. Moreover, majority of strains presented a high resistance to chloramphenicol while all strains were intermediate or resistant for gentamicin. Interestingly, only three strains 30, 42 and 73 were resistant to cefpirome. To investigate a possible role of efflux mechanism in the resistance level, PA $\beta$ N, an efflux pump inhibitor, was assayed in combination with antimicrobials [11, 28]. The addition of PA $\beta$ N induced increased nalidixic acid and chloramphenicol susceptibilities with MICs decreasing to two to three fold [25]. However, PA $\beta$ N had a weak or no effect on fluoroquinolones, gentamicin and cefpirome activities suggesting that a PA $\beta$ N-sensitive active efflux is not the major mechanism involved in the resistance for these molecules [33]. In this case, a mutation in the antibiotic target can be hypothesised.

- **Chloramphenicol accumulation**

To evaluate the effect of the efflux pump on the accumulation of chloramphenicol inside the strains, the intracellular accumulation of radio-labeled chloramphenicol was performed. Accumulation was determined for ten isolates in the absence or in the presence of carbonyl cyanide *m*-chlorophenylhydrazone (CCCP), an energy uncoupler that collapses the membrane energy [28, 33]. The steady-state concentration of chloramphenicol was measured after 10 minutes of incubation. A low level of chloramphenicol accumulation was found in the absence of CCCP in the majority of strains studies, compared to the susceptible strain 39 (Fig. 2). Importantly, a significant increase was obtained in presence of CCCP during the

incubation assay, demonstrating the activity of an energy dependent efflux mechanism for chloramphenicol. This noticeable efflux contributes to antibiotic resistance in these isolates by decreasing the intracellular drug concentration (Fig. 2). The ratio of chloramphenicol accumulation (value obtained on plateau with CCCP/value obtained on plateau without CCCP) was particularly high in strains 20, 30, 40, 50, 73 and 75 (Table 3). The results showed a good correlation between the values of MIC and the impact of CCCP on the efflux level of chloramphenicol as observed by Moreira *et al.* [31]. The activities of chloramphenicol and nalidixic acid were increased in presence of PA $\beta$ N in *E. coli* resistant isolates for which the main efflux pump is AcrAB-TolC (Table 2). In these MDR strains, the increase of chloramphenicol accumulation in the presence of CCCP demonstrated the role of an active efflux process driven by a proton motive force [29, 33, 40, 43].

- **Immunodetection of porins**

The immunodetection of porins with polyclonal antibodies directed against OmpC and OmpF monomers indicated no modifications of their expression in the various strains (Fig. 3).

Regarding the porin stability, the trimers produced in strains 40, 48, 50, 73, 75, 80, 96 and 98 exhibited a relative thermal unstability at 60°C, some monomers are observed in contrast to other porin from control strain *E. coli* JM 109 and other strains (data not shown). This trimer-monomer transition that occurred at relative low temperature, 60°C compare to 75°C, suggested a misfolding of the functional trimer [30, 42].

This trimer unstability may be thus explained by the production of an altered LPS chains that induced an aberrant insertion of porins into the OM [5, 7, 13, 42]. In these veterinary ETEC strains, obtained prior any known antibiotherapy, it is worthy of note that the LPS modifications correlate with a polymyxin resistance which could involve the PmrA-PmrB and PhoP-PhoQ two-component systems [34]. Concerning the resistance to  $\beta$ -lactams, it was

confirmed the high prevalence of *E. coli* strains producing extended spectrum AmpC  $\beta$ -lactamases and ESBL in human digestive microbiota [41].

All together, these various mechanisms (modifications of LPS, misassembly of porin trimers and active efflux), conjointly expressed exhibited by the tested ETEC resistant strains, drastically impair the efficiency of antimicrobials currently used to combat diarrhea the most prevalent cause of death in calves [20]. Importantly, the detection of such membrane changes raises questions about the genetic or environmental events that have contributed to the emergence and/or spread of such adapted strains.

### **Acknowledgements**

This work was supported by Aix-Marseille Univ. and Service de Santé des Armées.

**Declaration of interest:** none

**Conflict of interest statement:** none

### **REFERENCES**

1. **Alakomi HL, Saarela M, Helander IM.** Effect of EDTA on *Salmonella enterica* serovar Typhimurium involves a component not assignable to lipopolysaccharide release. Microbiology 2003, **149**, 2015-2021.
2. **Araya G, Roy A, Choudhary V, Yadav MM, Joshi CG.** Serogroups, atypical biochemical characters, colicinogeny and antibiotic resistance pattern of shiga toxin-producing *Escherichia coli* isolated from diarrhoeic calves in Gujarat, India. Zoonoses and Public Health 2008, **55**, 89-98.
3. **Bryskier A.** Antimicrobial agents: antibacterials and antifungals. ASM Press (Ed.), 2005 Washington, USA.

**4. Bywater R, Deluyker H, Deroover E, de Jong A, Marion H, McConville M, Rowan T, Shryock T, Shuster D, Thomas V, Vallé M, Walters J.** A European survey of antimicrobial susceptibility among zoonotic and commensal bacteria isolated from food-producing animals. *J Antimicrob Chemother* 2004, **54**, 774- 54.

**5. Bolla JM, Lazdunski C, Pagès JM.** The assembly of the major outer membrane protein OmpF of *Escherichia coli* depends on lipid synthesis. *Embo* 1988, **7**, 3595-3599.

**6. Botrel MA, Morignat [HYPERLINK](#)**

**["https://www.ncbi.nlm.nih.gov/pubmed/?term=Morignat%20E%5BAuthor%5D&cauthor=true&cauthor\\_uid=19912608"](https://www.ncbi.nlm.nih.gov/pubmed/?term=Morignat%20E%5BAuthor%5D&cauthor=true&cauthor_uid=19912608) E, Meunier D, Madec [HYPERLINK](#)**

**["https://www.ncbi.nlm.nih.gov/pubmed/?term=Madec%20JY%5BAuthor%5D&cauthor=true&cauthor\\_uid=19912608"](https://www.ncbi.nlm.nih.gov/pubmed/?term=Madec%20JY%5BAuthor%5D&cauthor=true&cauthor_uid=19912608) JY, Calavas [HYPERLINK](#)**

**["https://www.ncbi.nlm.nih.gov/pubmed/?term=Calavas%20D%5BAuthor%5D&cauthor=true&cauthor\\_uid=19912608"](https://www.ncbi.nlm.nih.gov/pubmed/?term=Calavas%20D%5BAuthor%5D&cauthor=true&cauthor_uid=19912608) D.** Identifying antimicrobial multiresistance patterns of

*Escherichia coli* sampled from diarrhoeic calves by cluster analysis techniques: a way to guide research on multiresistance mechanisms. *Zoonoses* [HYPERLINK](#)

**["https://www.ncbi.nlm.nih.gov/pubmed/19912608"](https://www.ncbi.nlm.nih.gov/pubmed/19912608) Public Health** 2010, **57**, 204-10.

**7. Bredin J, Saint N, Malléa M, Dé E, Molle G, Pagès JM, Simonet V.** Alteration of pore properties of *Escherichia coli* OmpF induced by mutation of key residues in anti-loop 3 region. *Biochem J* 2002, **363**, 521-528.

**8. Cao H, Pradhan AK, Karns [HYPERLINK](#)**

**["https://www.ncbi.nlm.nih.gov/pubmed/?term=Karns%20JS%5BAuthor%5D&cauthor=true&cauthor\\_uid=30597121"](https://www.ncbi.nlm.nih.gov/pubmed/?term=Karns%20JS%5BAuthor%5D&cauthor=true&cauthor_uid=30597121) JS, Hovingh [HYPERLINK](#)**

**["https://www.ncbi.nlm.nih.gov/pubmed/?term=Hovingh%20E%5BAuthor%5D&cauthor=true&cauthor\\_uid=30597121"](https://www.ncbi.nlm.nih.gov/pubmed/?term=Hovingh%20E%5BAuthor%5D&cauthor=true&cauthor_uid=30597121) E, Wolfgang DR, Vinyard [HYPERLINK](#)**

**"[https://www.ncbi.nlm.nih.gov/pubmed/?term=Vinyard%20BT%5BAuthor%5D&cauthor=true&cauthor\\_uid=30597121](https://www.ncbi.nlm.nih.gov/pubmed/?term=Vinyard%20BT%5BAuthor%5D&cauthor=true&cauthor_uid=30597121)" BT, Kim SW, Salaheen HYPERLINK**

**"[https://www.ncbi.nlm.nih.gov/pubmed/?term=Salaheen%20S%5BAuthor%5D&cauthor=true&cauthor\\_uid=30597121](https://www.ncbi.nlm.nih.gov/pubmed/?term=Salaheen%20S%5BAuthor%5D&cauthor=true&cauthor_uid=30597121)" S, Haley BJ, Van Kessel JAS. Age-Associated distribution of antimicrobial-resistant *Salmonella enterica* and *Escherichia coli* isolated from dairy herds in Pennsylvania, 2013-2015. Foodborne HYPERLINK**

**"<https://www.ncbi.nlm.nih.gov/pubmed/30597121>" Pathog HYPERLINK**

**"<https://www.ncbi.nlm.nih.gov/pubmed/30597121>" Dis 2019, **16**, 60-67.**

**9. Chevalier J, Mulfinger C, Garnotel E, Nicolas P, Davin-Régli A, Pagès JM.**

Identification and evolution of drug efflux pump in clinical *Enterobacter aerogenes* strains isolated in 1995 and 2003. Plos One 2008, **3**, c3203.

**10. Dandachi I, Chabou S, Daoud Z, Rolain JM.** Prevalence and emergence of extended-spectrum cephalosporin-, HYPERLINK "<https://www.ncbi.nlm.nih.gov/pubmed/30323797>"c HYPERLINK "<https://www.ncbi.nlm.nih.gov/pubmed/30323797>"arbapene HYPERLINK "<https://www.ncbi.nlm.nih.gov/pubmed/30323797>"m HYPERLINK "<https://www.ncbi.nlm.nih.gov/pubmed/30323797>"- and HYPERLINK "<https://www.ncbi.nlm.nih.gov/pubmed/30323797>"colistin HYPERLINK "<https://www.ncbi.nlm.nih.gov/pubmed/30323797>"-resistant Gram negative bacteria of animal origin in the Mediterranean b HYPERLINK "<https://www.ncbi.nlm.nih.gov/pubmed/30323797>"asin. Front Microbiol 2018, **9**, 2299.

**11. Davin-Régli A, Bolla JM, James CE, Lavigne JP, Chevalier J, Garnotel E, Molitor A, Pagès JM.** 2008. Membrane permeability and regulation of drug "influx and efflux" in Enterobacterial pathogens. Curr Drugs Targets 2008, **9**, 750-759.

- 12. Dé E, Basle A, Jaquinod M, Saint N, Malléa M, Molle G, Pagès JM.** A new mechanism of antibiotic resistance in *Enterobacteriaceae* induced by a structural modification of the major porin. *Mol Microbiol* 2001, **41**, 189-198.
- 13. De Cock H, Pasveer M, Tommassen J, Bouveret E.** Identification of phospholipids as new components that assist in the in vitro trimerization of a bacterial pore protein. *Eur J Biochem* 2001, **268**, 865-875.
- 14. De Verdier K, Nyman A, Greko C, Bengtsson B.** Antimicrobial resistance and virulence factors in *Escherichia coli* from Swedish dairy calves. *Acta Vet Scand* 2012, **54**, 2-10.
- 15. Donaldson SC, Straley BA, Hedge NV, Sawant AA, Debroy C, Jayarao BM.** Molecular epidemiology of ceftiofur-resistant *Escherichia coli* isolates from dairy calves. *Appl Environ Microbiol* 2006, **72**, 3940-3948.
- 16. Du D, Wang-Kan X, Neuberger A, van Veen HW, Pos KM, Piddock LJV, Luisi BF.** Multidrug [HYPERLINK "https://www.ncbi.nlm.nih.gov/pubmed/30002505"](https://www.ncbi.nlm.nih.gov/pubmed/30002505) efflux [HYPERLINK "https://www.ncbi.nlm.nih.gov/pubmed/30002505"](https://www.ncbi.nlm.nih.gov/pubmed/30002505) pumps [HYPERLINK "https://www.ncbi.nlm.nih.gov/pubmed/30002505"](https://www.ncbi.nlm.nih.gov/pubmed/30002505): structure, [HYPERLINK "https://www.ncbi.nlm.nih.gov/pubmed/30002505"](https://www.ncbi.nlm.nih.gov/pubmed/30002505) function [HYPERLINK "https://www.ncbi.nlm.nih.gov/pubmed/30002505"](https://www.ncbi.nlm.nih.gov/pubmed/30002505) and [HYPERLINK "https://www.ncbi.nlm.nih.gov/pubmed/30002505"](https://www.ncbi.nlm.nih.gov/pubmed/30002505) regulation [HYPERLINK "https://www.ncbi.nlm.nih.gov/pubmed/30002505"](https://www.ncbi.nlm.nih.gov/pubmed/30002505). *Nat Rev Microbiol* 2018, **9**, 523-539.
- 17. Fadli M, Chevalier J, Bolla JM, Mezrioui NE, Hassani L, Pages JM.** *Thymus maroccanus* essential oil, a membranotropic compound active on Gram-negative bacteria and resistant isolates. *J Appl Microbiol* 2012, **113**, 1120-9.

**18. Gayet S, Chollet R, Molle G, Pagès J-M, Chevalier J.** Modification of outer membrane protein profile and evidence suggesting an active drug pump in *Enterobacter aerogenes* clinical strains. *Antimicrob Agents Chemother* 2003;**47**, 1555-1559.

**19. Ghisalberti D, Masi M, Pagès JM, Chevalier J.** Chloramphenicol and expression of multidrug efflux pump in *Enterobacter aerogenes*. *Biochem Biophys Res Commun* 2005, **328**, 1113-1118.

**20. Güler [HYPERLINK](#)**

**["https://www.ncbi.nlm.nih.gov/pubmed/?term=G%C3%BCler%20L%5BAuthor%5D&cauthor=true&cauthor\\_uid=18454746"](https://www.ncbi.nlm.nih.gov/pubmed/?term=G%C3%BCler%20L%5BAuthor%5D&cauthor=true&cauthor_uid=18454746) [HYPERLINK](#)**

**["https://www.ncbi.nlm.nih.gov/pubmed/?term=G%C3%BCler%20L%5BAuthor%5D&cauthor=true&cauthor\\_uid=18454746"](https://www.ncbi.nlm.nih.gov/pubmed/?term=G%C3%BCler%20L%5BAuthor%5D&cauthor=true&cauthor_uid=18454746) [L, Gündüz \[HYPERLINK\]\(#\)](#)**

**["https://www.ncbi.nlm.nih.gov/pubmed/?term=G%C3%BCnd%20K%5BAuthor%5D&cauthor=true&cauthor\\_uid=18454746"](https://www.ncbi.nlm.nih.gov/pubmed/?term=G%C3%BCnd%20K%5BAuthor%5D&cauthor=true&cauthor_uid=18454746) [K, Ok U.](#)** Virulence factors and antimicrobial susceptibility of *Escherichia coli* isolated from calves in Turkey. *Zoonoses [HYPERLINK](#)* ["https://www.ncbi.nlm.nih.gov/pubmed/18454746"](https://www.ncbi.nlm.nih.gov/pubmed/18454746) *Public Health* 2008, **55**, 249-57.

**21. Hancock REW.** Alterations in outer membrane permeability. *Ann Rev Microbiol* 1984, **38**, 237-264.

**22. Hariharan [HYPERLINK](#)**

**["https://www.ncbi.nlm.nih.gov/pubmed/?term=Hariharan%20H%5BAuthor%5D&cauthor=true&cauthor\\_uid=15317393"](https://www.ncbi.nlm.nih.gov/pubmed/?term=Hariharan%20H%5BAuthor%5D&cauthor=true&cauthor_uid=15317393) [H, Coles \[HYPERLINK\]\(#\)](#)**

**["https://www.ncbi.nlm.nih.gov/pubmed/?term=Coles%20M%5BAuthor%5D&cauthor=true&cauthor\\_uid=15317393"](https://www.ncbi.nlm.nih.gov/pubmed/?term=Coles%20M%5BAuthor%5D&cauthor=true&cauthor_uid=15317393) [M, Poole D, Page R.](#)** Antibiotic resistance among

enterotoxigenic *Escherichia coli* from piglets and calves with diarrhea. *Can Vet J* 2004, **45**, 605-6.

**23. Hordijk J, Veldman K, Dierikx C, van Essen-Zandbergen A, Jaap A, Wagenaar JA, Wit B, Mevius D.** Prevalence and characteristics of quinolone resistance in *Escherichia coli* in veal calves. *Veterinary Microbiology* 2012, **156**, 136–142.

**24. Hordijk J, Wagenaar JA, van de Giessen A, Dierikx C, van Essen-Zandbergen A, Veldman K, Kant A, Mevius D.** Increasing prevalence and diversity of ESBL/ [HYPERLINK](https://www.ncbi.nlm.nih.gov/pubmed/23657803) "https://www.ncbi.nlm.nih.gov/pubmed/23657803" AmpC [HYPERLINK](https://www.ncbi.nlm.nih.gov/pubmed/23657803) "https://www.ncbi.nlm.nih.gov/pubmed/23657803"-type [HYPERLINK](https://www.ncbi.nlm.nih.gov/pubmed/23657803) "https://www.ncbi.nlm.nih.gov/pubmed/23657803"β [HYPERLINK](https://www.ncbi.nlm.nih.gov/pubmed/23657803) "https://www.ncbi.nlm.nih.gov/pubmed/23657803"-lactamase genes in [HYPERLINK](https://www.ncbi.nlm.nih.gov/pubmed/23657803) "https://www.ncbi.nlm.nih.gov/pubmed/23657803"Escherichia coli [HYPERLINK](https://www.ncbi.nlm.nih.gov/pubmed/23657803) "https://www.ncbi.nlm.nih.gov/pubmed/23657803"isolated from veal calves from 1997 to [HYPERLINK](https://www.ncbi.nlm.nih.gov/pubmed/23657803) 2010. *J Antimicrob Chemother* 2013, **68**, 1970-3.

**25. Karczmarczyk M, Martins M, Quinn T, Leonard N, Fanning S.** Mechanisms of fluoroquinolone resistance in *Escherichia coli* isolates from food-producing animals. *Appl Environ Microbiol* 2011, **77**, 7113-7120.

**26. Knezevic P, Petrovic O.** Antibiotic resistance of commensal *Escherichia coli* of food-producing animals from three Vojvodinian farms, Serbia. *Intern J Antimicrob Agents* 2008, **31**, 360-363.



**27. Liu Y, Liu JH.** Monitoring Colistin Resistance in Food Animals, An Urgent Threat.

Expert Rev Anti Infect [HYPERLINK](#)

"https://www.ncbi.nlm.nih.gov/pubmed/29865881" Ther 2018, **16**, 443-446.

**28. Lomovskaya O, Warren MS, Lee A, Galazzo J, Fronko R, Lee M, Blais J, Cho D, Chamberland S, Renau T, Leger R, Hecker S, Walkins W, Hoshino K, Ishida H, Lee VJ.**

Identification and characterization of inhibitors of multidrug resistance efflux pumps in

*Pseudomonas aeruginosa*: novel agents for combination therapy. Antimicrob. Agents

Chemother 2001, **45**, 105-116.

**29. Ma D, Cook DN, Alberti M, Pon NG, Nikaido H, Hearst JE.** Genes *acrA* and *acrB*

encode a stress-induced efflux system of *Escherichia coli*. Mol Microbiol 1995, **16**, 45-55.

**30. Malléa M, Chevalier J, Bornet C, Eyraud A, Davin-Regli A, Bollet C, Pagès JM.**

Porin alteration and active efflux: two *in vivo* drug resistance strategies used by *Enterobacter aerogenes*. Microbiology 1998, **144**, 3003-3009.

**31. Moreira MAS, Oliveira JA, Teixeira LM, Moraes CA.** Detection of a chloramphenicol efflux system in *Escherichia coli* isolated from poultry carcass. Vet Microbiol 2005, **109**, 75-81.

**32. Nikaido H.** Molecular basis of bacterial outer membrane permeability revisited.

Microbiol Mol Biol Rev 2003, **67**, 593-656.

**33. Nikaido H, Pagès JM.** Broad-specificity efflux pumps and their role in multidrug

resistance of Gram-negative bacteria. FEMS Microbiol Rev 2012, **36**, 340-63.

**34. Olaitan AO, Morand D, Rolain JM.** Mechanisms of polymyxin resistance: acquired and intrinsic resistance in bacteria. Front Microbiol 2014, **5**, 643.

**35. Olivares J, Bernardini A, Garcia-Leon G, Corona F, Sanchez MB, Martinez JL.** The intrinsic resistome of bacterial pathogens. *Front Microbiol* 2013, **4**, 103.

**36. Pardon B, Catry B, Dewulf J, Persoons D, Hostens M, De Bleecker K, Deprez P.** Prospective study on quantitative and qualitative antimicrobial and anti-inflammatory drug use in white veal [HYPERLINK "https://www.ncbi.nlm.nih.gov/pubmed/22262796"](https://www.ncbi.nlm.nih.gov/pubmed/22262796)calves [HYPERLINK "https://www.ncbi.nlm.nih.gov/pubmed/22262796"](https://www.ncbi.nlm.nih.gov/pubmed/22262796). *J Antimicrob Chemother* 2012, **67**, 1027-38.

**37. Pereira RV, Siler JD, Ng JC, Davis, MA, Grohn YT, Warnick LD.** Effect of on-farm use of antimicrobial drugs on resistance in fecal *Escherichia coli* of preweaned dairy calves. *J. Dairy Sci* 2014, **97**, 7644–7654.

**38. Philippe N, Maigre L, Santini S, Pinet E, Claverie JM, Davin-Régli A, Pagès JM, Masi M.** In vivo evolution of bacterial resistance in two cases of *Enterobacter aerogenes* infections during treatment with imipenem. *PLoS One* 2015, **10**:e0138828.

**39. Poirel L, Jayol A, Nordmann P.** Polymyxins [HYPERLINK "https://www.ncbi.nlm.nih.gov/pubmed/28275006"](https://www.ncbi.nlm.nih.gov/pubmed/28275006): Antibacterial activity, susceptibility testing, and [HYPERLINK "https://www.ncbi.nlm.nih.gov/pubmed/28275006"](https://www.ncbi.nlm.nih.gov/pubmed/28275006)resistance [HYPERLINK "https://www.ncbi.nlm.nih.gov/pubmed/28275006"](https://www.ncbi.nlm.nih.gov/pubmed/28275006) mechanisms encoded by plasmids or chromosomes. *Clin Microbiol Rev* 2017, **30**, 557-596.

**40. Rosenberg EY, Bertenthal D, Nilles ML, Bertrand KP, Nikaido H.** Bile salts and fatty acids induce the expression of *Escherichia coli* AcrAB multidrug efflux pump through their interaction with Rob regulatory protein. *Mol Microbiol* 2003, **48**, 1609-1619.

**41. Salord H, Guérin-Faubleé P, Gêrôme P, Bonaiti V, Tigaud S.** 2007. Caractérisation des  $\beta$ -lactamases chez des souches de colibacilles isolés de diarrhées néonatales chez le veau. Réunion interdisciplinaire de Chimiothérapie anti-infectieuse. Paris.

**42. Simonet V, Malléa M, Pagès JM.** Substitutions in the eyelet region disrupt cefepime diffusion through the *Escherichia coli* OmpF channel. Antimicrob. Agents Chemother 2000, **44**, 311-315.

**43. Sulavik MC, Houseweart C, Cramer C, Jiwani N, Murgolo N, Greene J.** Antibiotic susceptibility profiles of *Escherichia coli* strains lacking multidrug efflux pump genes. Antimicrob Agents Chemother 2001, **45**, 1126-1136.

**44. Thiolas A, Bollet C, La Scola B, Raoult D, Pagès JM.** Successive emergence of *Enterobacter aerogenes* strains resistant to imipenem and colistin in a patient. Antimicrob Agents Chemother 2005, **49**, 1354-1358.

**45. Trimble MJ, Mlynárcik P, Kolář M, Hancock RE.** Polymyxin: alternative mechanisms of action and resistance. Cold Spring Harb Perspect Med 2016, **6**(10), a025288.

**46. Tsai CM, Frasch CE.** A sensitive silver stain for detecting lipopolysaccharides in polyacrylamide gels. Anal Biochem 1982, **119**, 115-119.

**47. Umpiérrez [HYPERLINK](#)**

**"[https://www.ncbi.nlm.nih.gov/pubmed/?term=Umpi%C3%A9rrez%20A%5BAuthor%5D&cauthor=true&cauthor\\_uid=28904264](https://www.ncbi.nlm.nih.gov/pubmed/?term=Umpi%C3%A9rrez%20A%5BAuthor%5D&cauthor=true&cauthor_uid=28904264)" A, Bado [HYPERLINK](#)**

**"[https://www.ncbi.nlm.nih.gov/pubmed/?term=Bado%20I%5BAuthor%5D&cauthor=true&cauthor\\_uid=28904264](https://www.ncbi.nlm.nih.gov/pubmed/?term=Bado%20I%5BAuthor%5D&cauthor=true&cauthor_uid=28904264)" I, Oliver M, Acquistapace [HYPERLINK](#)**

**"[https://www.ncbi.nlm.nih.gov/pubmed/?term=Acquistapace%20S%5BAuthor%5D&cauthor=true&cauthor\\_uid=28904264](https://www.ncbi.nlm.nih.gov/pubmed/?term=Acquistapace%20S%5BAuthor%5D&cauthor=true&cauthor_uid=28904264)" S, Etcheverría [HYPERLINK](#)**

["https://www.ncbi.nlm.nih.gov/pubmed/?term=Etcheverr%C3%ADa%20A%5BAuthor%5D&cauthor\\_uid=28904264"](https://www.ncbi.nlm.nih.gov/pubmed/?term=Etcheverr%C3%ADa%20A%5BAuthor%5D&cauthor_uid=28904264) A, Padola [HYPERLINK](#)

["https://www.ncbi.nlm.nih.gov/pubmed/?term=Padola%20NL%5BAuthor%5D&cauthor\\_uid=28904264"](https://www.ncbi.nlm.nih.gov/pubmed/?term=Padola%20NL%5BAuthor%5D&cauthor_uid=28904264) NL, Vignoli [HYPERLINK](#)

["https://www.ncbi.nlm.nih.gov/pubmed/?term=Vignoli%20R%5BAuthor%5D&cauthor\\_uid=28904264"](https://www.ncbi.nlm.nih.gov/pubmed/?term=Vignoli%20R%5BAuthor%5D&cauthor_uid=28904264) R, Zunino [HYPERLINK](#)

["https://www.ncbi.nlm.nih.gov/pubmed/?term=Zunino%20P%5BAuthor%5D&cauthor\\_uid=28904264"](https://www.ncbi.nlm.nih.gov/pubmed/?term=Zunino%20P%5BAuthor%5D&cauthor_uid=28904264) P. Zoonotic Potential and Antibiotic Resistance of

*Escherichia coli* in Neonatal Calves in Uruguay. *Microbes Environ*. 2017, **32**, 275-282.

**48. Urban C, Tiruvury H, Mariano N, Colon-Urban R, Rahal JJ.** Polymyxin-resistant clinical isolates of *Escherichia coli*. *Antimicrob Agents Chemother* 2011, **55**, 388-389.

**49. Velkov T, Thompson PE, Nation RL, Li J.** Structure-activity relationships of polymyxin antibiotics. *J Med Chem* 2010, **53**, 1898-1916.

**50. Yamasaki S, Nagasawa S, Fukushima A, Hayashi-Nishino M, Nishino K.** Cooperation of the multidrug efflux pump and lipopolysaccharides in the intrinsic resistance of *Salmonella enterica* serovar Typhimurium. *J Antimicrob Chemother* 2013, **68**, 1066-1070.

Strains	MIC (µg/mL)	
	Colistin	Polymyxin B
17	8	4
17+EDTA*	4	2
20	16	4
20+EDTA	2	1
26	2	1
26+EDTA	0.5	0.5
30	16	4
30+EDTA	1	0.5
39	< 2	0.5
39+EDTA	2	0.5
40	64	8
40+EDTA	2	1
42	1	n.d
42+EDTA	n.d**	n.d
48	32	16
48+EDTA	8	2
50	8	2
50+EDTA	1	0.5
73	1	n.d
73+EDTA	n.d	n.d
75	64	8
75+EDTA	2	2
80	2	0.5
80+EDTA	2	0.5
96	2	1
96+EDTA	1	0.5
98	32	4
98+EDTA	4	2

EDTA\* at concentration: 0.1mM; n.d\*\*: not determined. The values are the means of the three independent assays.

**Table 1:** Susceptibilities of enterotoxigenic *Escherichia coli* strains isolated from calves to colistin and polymyxin B in the absence or in the presence of EDTA (used as chelator of divalent cations present in bacterial envelope)

Strains	Nalidixic acid	Ciprofloxacin	Ofloxacin	Cefpirome	Gentamicin	Chloramphenicol
17	> 512	32	16	1	64	256
17+PA $\beta$ N*	128	16	8	1	128	128
20	> 512	2	4	0.5	> 64	512
20+PA $\beta$ N	128	1	1	0.5	> 64	128/64
26	> 32	< 0.015	0.03	0.25	4	1
26+PA $\beta$ N	< 0.125	< 0.015	0.03	0.125	2	0.5
30	> 512	0.5	1	4	4	512
30+PA $\beta$ N	256	0.5	0.5	>4	4	128
39	0.5	< 0.015	0.06	0.06	4	1
39+PA $\beta$ N	< 0.125	< 0.015	0.03	0.125	2	0.25
40	> 512	8	16	0.5	> 64	256
40+PA $\beta$ N	128	8	4	2	> 64	64
42	2	<0.015	0.06	> 8	4	> 256
42+PA $\beta$ N	1	<0.015	0.03	> 8	2	64
48	> 512	128	64	1	32	128/256
48+PA $\beta$ N	128	64	16	0.5	32	128
50	> 512	> 8	> 8	0.125	> 32	> 512
50+PA $\beta$ N	128	> 8	8	0.25	32	128
73	n.d**	32	16	> 4	512	128
73+PA $\beta$ N	n.d	16	8	> 4	256	n.d
75	> 512	8	8	0.5	4	256
75+PA $\beta$ N	128	8	4	2	4	64
80	> 32	<0.015	0.06	0.06	4	1
80+PA $\beta$ N	0.25	0.015	0.03	0.06	1	0.5
96	> 512	64	32	0.25	> 64	4
96+PA $\beta$ N	128	32	16	0.25	> 64	2
98	> 512	128	64	0.5	64	128
98+PA $\beta$ N	128	64	16	0.5	> 64	64

PA $\beta$ N\* at concentration 50 $\mu$ M; n.d\*\*: not determined

The values are the means of the three independent assays.

**Table 2:** Susceptibility of enterotoxigenic *Escherichia coli* isolates to various antimicrobials in the absence or in the presence of an efflux pump inhibitor, PA $\beta$ N.

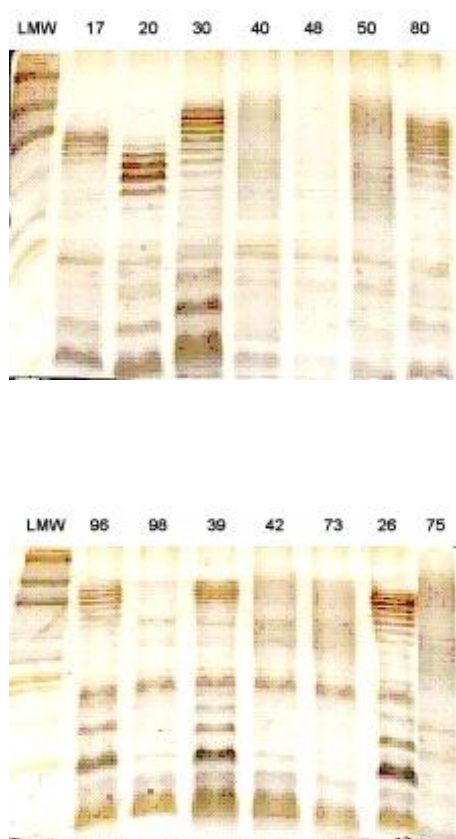
Strains	MIC ( $\mu\text{g/mL}$ ) chloramphenicol	Ratio of chloramphenicol accumulation at time 600s with and without CCCP*
20	512	72
30	512	33
39	1	2
40	256	45
48	128	5
50	> 512	50
73	128	45
75	256	37
80	1	3.5
98	128	2.8

CCCP\*, energy uncoupler used at 50 $\mu\text{M}$  ; n.d\*\*, not determined

The values are the means of the two independent assays.

**Table 3:** Antimicrobial susceptibility to chloramphenicol and chloramphenicol accumulation.

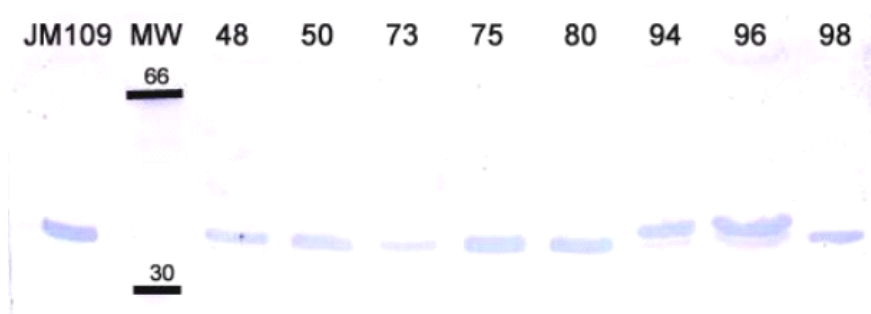
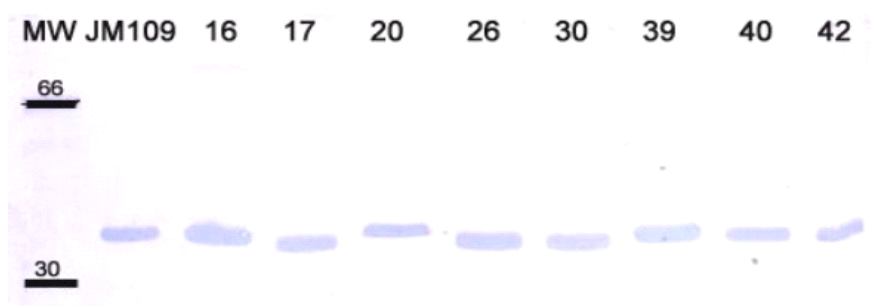
## FIGURES



**Fig. 1:** SDS-PAGE analysis of Lipopolysaccharide profiles in the fourteen *E. coli* strains. LPSs were prepared and separated by SDS-PAGE according to Thiolas *et al* [44]. LMW was the molecular weight standard.



**Fig. 2:** Uptake of chloramphenicol by *E. coli* isolates 39, 20, 50 and 75. The intracellular accumulation of [ $^{14}$ C]-radiolabeled chloramphenicol was carried out at various times in the absence (diamond) or in the presence (square) of CCCP according to the method previously described [19]. Values (expressed as counts per minute/optical density of cell suspension) were obtained from two independent experiments.



**Fig. 3:** Immunodetection of OmpF in *E. coli* strains . After SDS-PAGE of whole total proteins and electrotransfert on nitrocellulose sheets, the immunodetection assay were carried out with antibodies directed against OmpC and OmpF [30].

MW indicated the molecular weight standards ( in kilodaltons). *E. coli* JM 109 was used as the control strain. Only the relevant part of the immunoblot is shown.