



HAL
open science

A Multicenter Preclinical MRI Study: Definition of Rat Brain Relaxometry Reference Maps

Tristan Deruelle, F. Kober, Adriana Perles-Barbacaru, Thierry Delzescaux, Vincent Noblet, Emmanuel Barbier, Michel Dojat

► To cite this version:

Tristan Deruelle, F. Kober, Adriana Perles-Barbacaru, Thierry Delzescaux, Vincent Noblet, et al.. A Multicenter Preclinical MRI Study: Definition of Rat Brain Relaxometry Reference Maps. *Frontiers in Neuroinformatics*, 2020, 14, 10.3389/fninf.2020.00022 . hal-03008867

HAL Id: hal-03008867

<https://amu.hal.science/hal-03008867v1>

Submitted on 23 Nov 2020

HAL is a multi-disciplinary open access archive for the deposit and dissemination of scientific research documents, whether they are published or not. The documents may come from teaching and research institutions in France or abroad, or from public or private research centers.

L'archive ouverte pluridisciplinaire **HAL**, est destinée au dépôt et à la diffusion de documents scientifiques de niveau recherche, publiés ou non, émanant des établissements d'enseignement et de recherche français ou étrangers, des laboratoires publics ou privés.



Distributed under a Creative Commons Attribution 4.0 International License



A Multicenter Preclinical MRI Study: Definition of Rat Brain Relaxometry Reference Maps

Tristan Deruelle¹, Frank Kober², Adriana Perles-Barbacaru², Thierry Delzescaux³, Vincent Noblet⁴, Emmanuel L. Barbier¹ and Michel Dojat^{1*}

¹ INSERM, U1216, Grenoble Institut des Neurosciences, Université Grenoble Alpes, Grenoble, France, ² CNRS, CRMBM, Aix-Marseille Université, Marseille, France, ³ UMR-9199, CNRS, CEA-MIRCen, Paris Saclay, Fontenay-aux-Roses, France, ⁴ CNRS, ICube – IMAGeS, Strasbourg University, Strasbourg, France

Similarly to human population imaging, there are several well-founded motivations for animal population imaging, the most notable being the improvement of the validity of statistical results by pooling a sufficient number of animal data provided by different imaging centers. In this paper, we demonstrate the feasibility of such a multicenter animal study, sharing raw data from forty rats and processing pipelines between four imaging centers. As specific use case, we focused on T1 and T2 mapping of the healthy rat brain at 7T. We quantitatively report about the variability observed across two MR data providers and evaluate the influence of image processing steps on the final maps, using three fitting algorithms from three centers. Finally, to derive relaxation times from different brain areas, two multi-atlas segmentation pipelines from different centers were performed on two different platforms. Differences between the two data providers were 2.21% for T1 and 9.52% for T2. Differences between processing pipelines were 1.04% for T1 and 3.33% for T2. These maps, obtained in healthy conditions, may be used in the future as reference when exploring alterations in animal models of pathology.

Keywords: MRI, brain imaging, rat, quantitative imaging, digital atlas

OPEN ACCESS

Edited by:

David A. Gutman,
Emory University, United States

Reviewed by:

Frithjof Kruggel,
University of California, Irvine,
United States
Benjamin Marty,
Sorbonne Université, France

*Correspondence:

Michel Dojat
Michel.Dojat@inserm.fr

Received: 29 May 2019

Accepted: 21 April 2020

Published: 19 May 2020

Citation:

Deruelle T, Kober F, Perles-Barbacaru A, Delzescaux T, Noblet V, Barbier EL and Dojat M (2020) A Multicenter Preclinical MRI Study: Definition of Rat Brain Relaxometry Reference Maps. *Front. Neuroinform.* 14:22. doi: 10.3389/fninf.2020.00022

INTRODUCTION

In the clinical domain, multicenter studies are common. Their main objective is to gather data from a sufficient number of patients in a reasonable period of time to improve the statistical power and consequently the robustness of the reported results. Multicenter studies also set the basis for developing and validating quantitative and reproducible imaging biomarkers. Similarly, there are several well-founded motivations for animal population imaging: optimization of costs, reduction of experimentation duration, and improvement of quality of science, notably by the use of sufficiently large animal cohorts for ensuring the validity of statistical results [see the special Lab Animal focus on reproducibility in animal research (Prescott and Lidster, 2017)]. This domain is still in its infancy, and we may expect it to develop in the near future. Consequently, only few tools are available to facilitate preclinical data pooling. Moreover, there is a clear lack of large actions for standardization of image acquisition conditions and post-processing techniques. Finally, there are no reliable commonly adopted preclinical imaging biomarkers for differentiating normal vs. pathological conditions. The aim of the present work was to assess the feasibility of multicenter

preclinical studies in order to define robust biomarkers. We thus considered a specific use case: quantitative T1 and T2 mapping of the healthy rat brain at 7T.

The T1 and T2 relaxation times are tissue- and region-dependent. As they may reflect micro-anatomical alterations, they are biomarkers for various pathologies (Deoni, 2010). To map these relaxation times, series of weighted images are acquired with varying acquisition parameters such as echo time (TE), inversion time (TI) or flip angle. Voxel-per-voxel fitting of a model equation (with generally two or three parameters) to these series is then used to calculate relaxation time maps (Guilfoyle et al., 2003; de Graaf et al., 2006; Wright et al., 2008). Alternatively, newer fingerprinting methods based on the use of dictionaries currently emerge (Gao et al., 2015). A large number of monocentric studies measured T1 and T2 in rodents, at different magnetic fields and using different acquisition protocols. They show that T1 relaxation time increases with magnetic field while T2 relaxation time decreases (de Graaf et al., 2006; van de Ven et al., 2007; Wright et al., 2008). Some studies also reported regional values (Cremillieux et al., 1998; Barbier et al., 2005; Del Bigio et al., 2011; Gigliucci et al., 2014; Suleymanova et al., 2014; Koundal et al., 2015; Liachenko and Ramu, 2017; Behroozi et al., 2018), but no consensus has been reached yet about values of reference for specific rat brain regions. To define such reference maps, a large number of brain structures or regions should be considered and a sufficient number of animals should be included to reflect inter-individual variability. In this context, a multicenter study is relevant.

For Human studies, to facilitate data storage, data sharing and data processing with specific pipelines, several infrastructures have been proposed such as COINS (Landis et al., 2016), LORIS + BRAIN (Das et al., 2016) or LONI (Rex et al., 2003) for Neuroimaging multicenter studies [see recent works in this field (Dojat et al., 2017)]. These infrastructures support the “Open Science” approach, an international action to improve the use of resources, to ease study replication, and to strengthen the validity of scientific results (NAP, 2018). This promotes studies on very large cohorts (e.g., Adhikari et al., 2019), the development of reference databases [see for Alzheimer disease (Li et al., 2017), Parkinson disease (Chahine et al., 2018) or Human connectome project (Hodge et al., 2016)] and fair and robust comparison of image processing solutions (Commowick et al., 2018). Here, we propose to use an extension of the SHaring NeuroImaging Resources environment (Barillot et al., 2016) for storing preclinical imaging data (Small Animal Shanoir, SAS)¹ in conjunction with the VIP² architecture, a platform dedicated to the execution of image processing pipelines (Glatard et al., 2013). We quantitatively report about the variability observed across two data provider centers and evaluate different image processing pipelines. We finally discuss the feasibility of small animal population studies. To promote data sharing in the preclinical domain, raw and processed datasets as well as processing pipelines have been made available (see section “Discussion”).

¹<https://shanoir-ng-dev.irisa.fr/>

²<https://www.creatis.insa-lyon.fr/vip/>

MATERIALS AND METHODS

Distribution of Tasks Between Centers

Two centers, GIN (C1) and CRMBM (C2) hosted the animals and performed brain MRI acquisitions. Three centers C2, MIRCent (C3) and ICube (C4) provided processing pipelines.

Animals

Twenty Sprague Dawley rats (male, Janvier Labs, Paris France, mean weight 279 ± 40 g [(min: 249.5 g, max: 314 g), details in **Supplementary Table S1**] were scanned in two imaging centers (C1 and C2). Animals were anesthetized with isoflurane [2% in air at C2 and 2% in a mixture of Air and O₂ (7:3) at C1] that was delivered via a nose cone during the experiment. Animals were positioned in prone position on an animal bed (Bruker Biospin, Ettlingen, Germany). Breath rate was monitored using a pneumatic pillow sensor placed under the abdomen. Body temperature was measured with a rectal probe and maintained in the normal range at $36.2 \pm 1.4^{\circ}\text{C}$ using a heated blanket. To control acquisition reproducibility, three rats were scanned twice, one rat (Subject 32, S32) at C2 at a 2-day interval and two rats (Subject 21, S21 and Subject 22, S22) at C1 at a 3-day interval. All experiments were approved by the local ethics committee of each center and were in full compliance with the guidelines of the European Union (EUVD 86/609/EEC) for the care and use of the laboratory animals. Experiments were performed under permits from the French Ministry of Agriculture (n° 380945 and A3851610008 for experimental and animal care facilities for C1 and G130555 for C2).

MRI Protocol

Acquisitions were performed on 7T horizontal Bruker scanners using the same MR sequences and parameters at data provider centers C1 and C2 (aC1 and aC2, respectively, see details in **Table 1**). Preliminary *in vitro* experiments were performed at C1 and C2 in order to select the best sequences to use, with the objective to minimize acquisition time and geometric artifacts, and to maximize spatial resolution. A 3D MDEFT sequence (with Inversion Preparation as MPRAGE) was chosen for T1 mapping (REF)³. Multi-Slice Multi-Echo (MSME) was chosen for T2 mapping. For T1 mapping, the MPRAGE sequence was run seven times with incremental inversion times (TI) and for T2 mapping, a 3D MSME sequence with 28 echo times (TE) was used (DiFrancesco et al., 2008; Liu et al., 2011). Main sequence parameters are shown in **Table 1**. Total experiment duration per animal was about 2 h.

Data Processing and Analysis

Figure 1 illustrates the complete image processing workflow. Several preprocessing steps were performed using SPM12⁴ and MATLAB R2015a. Briefly, Bruker files were first converted into NIFTI images using home-made software. All anatomical images were rigidly realigned on a study-specific rat template.

³<https://www.ncbi.nlm.nih.gov/pmc/articles/PMC308577/>

⁴<http://www.fil.ion.ucl.ac.uk/spm>

TABLE 1 | Equipment characteristics, Fitting and Segmentation methods. In the model equations, A, B, T1 and T2 are the parameters to be estimated.

Acquisition	GIN (aC1)	CRMBM (aC2)	
Scanner model	Bruker BioSpin MRI GmbH – Biospec 70/20 7.0T	Bruker BioSpin MRI GmbH – Pharmascan B-C 70/16US 7.0T	
Transmitting coil	Linear Volumetric Coil 72 mm	Quadrature Resonator 72 mm	
Receiving coil	Rat Head Coil (Surface) 1 channel	GIN coil	
Gradient system	BGA12S2 (110 mm, max 660 mT/m, slew rate 4570 T/m/s)	BGA 9SHP (90 mm, max 750 mT/m, slew rate 6840 T/m/s)	
T1 mapping	MPRAGE sequence; T1 = 247, 408, 674, 1112, 1838, 3030, and 5000 ms; TR = 6500 ms		
T2 mapping	3D MSME; TE = (8:224 ms); TR = 600 ms		
	FOV: 2.7 cm × 2.7 cm × 2.8 cm, matrix size: 128 × 128 × 66, spatial resolution: 211 μm × 211 μm × 424 μm		
Fitting	GIN (fC1)	CRMBM (fC2)	MIRGen (fC3)
Software	MATLAB R2015a	ImageJ v1.51	BrainVISA/Python
Equation T1	$y = \left A \cdot \left(1 - 2B \cdot \exp\left(-\frac{T1}{T1}\right) \right) \right $	$y = \left A \cdot \left(1 - 2B \cdot \exp\left(-\frac{T1}{T1}\right) \right) \right $	$y = \left A \cdot \left(1 - 2B \cdot \exp\left(-\frac{T1}{T1}\right) \right) \right $
Equation T2	$y = \left A \cdot \exp\left(-\frac{TE}{T2}\right) \right $	$y = \left A \cdot \exp\left(-\frac{TE}{T2}\right) \right $	$y = \left A \cdot \exp\left(-\frac{TE}{T2}\right) \right $
Segmentation	ICube (sC4)		MIRCEN (sC3)
Brain masking			Matlab/spm12
Bias field correction			N4
Registration	Non-rigid [ANTS (Avants et al., 2010)]		Rigid + Block-Matching affine (Lebenberg et al., 2010)
Number of atlases	11		12
Probability rule			Majority voting

See text for details.

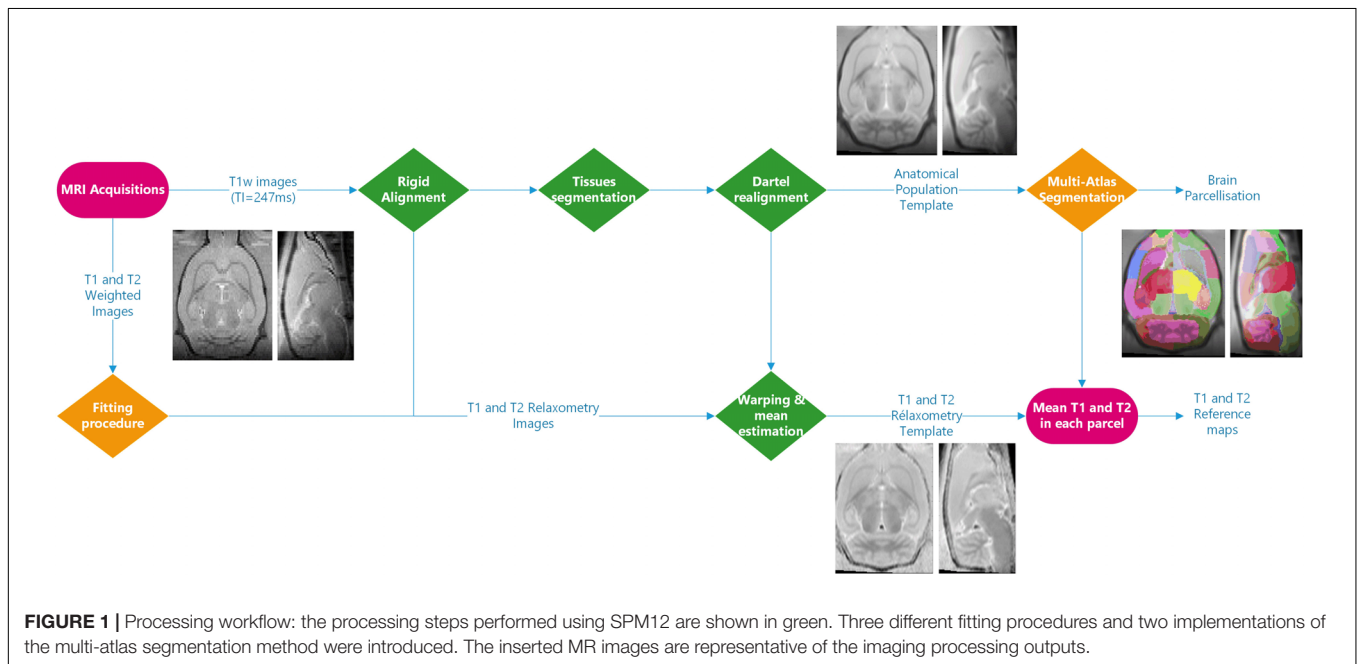


FIGURE 1 | Processing workflow: the processing steps performed using SPM12 are shown in green. Three different fitting procedures and two implementations of the multi-atlas segmentation method were introduced. The inserted MR images are representative of the imaging processing outputs.

Tissue segmentation was performed for each animal (Ashburner and Friston, 2005) based on our study-specific, tissue prior, template. Using the Dartel registration algorithm (Ashburner, 2007) adapted to rat images, these tissue images were non-rigidly registered.

The individual deformation field was then applied to the corresponding individual anatomical and relaxometry images, and all these images were averaged to compute anatomical and

relaxometry mean templates. Additionally, T1 and T2 weighted raw images were separately processed using three different fitting pipelines. The differences between these pipelines developed at C1, C2, and C3 (fC1, fC2 and fC3, respectively), are summarized in **Table 1**. All algorithms performed non-linear pixel-per-pixel fitting for each voxel independently. Negative values and values greater than 3000 ms for T1 and 300 ms for T2 were discarded. The optimization algorithm was Levenberg-Marquardt for fC1

and fC3 and the Simplex algorithm provided with ImageJ for fC2 (Nelder and Mead, 1965). The three T2 estimation procedures rely on the same model equations.

Rat brain parcellation was performed using two multi-atlas approaches similar to the one proposed by Lancelot et al. (2014), for a precise and reproducible delineation of brain structures in preclinical *in vivo* imaging. A maximum probability automatic delineation was obtained by the fusion of several manually delineated images placed in a common space and constituting the multi-atlas dataset. This dataset was registered to the native space of the MR image to segment. At each voxel, the most likely label in the dataset was selected by a maximum probability rule. Two versions of this approach were implemented and executed, one at C3 (sC3) using BrainVISA⁵ and one at C4 (sC4) using VIP (Glatard et al., 2013), which differ in some aspects as detailed in **Table 1**. Twenty-nine brain regions were defined (see **Figure 2**). MR data initially stored in the SAS database were automatically sent to the VIP processing platform and processed results were seamlessly stored [see more details and the Figure 8 in Commowick et al. (2018) for database and computing platform integration with Shanoir].

The twelve pipelines combining data acquisition (aC1 and aC2), fitting (fC1, fC2, and fC3) and segmentation (sC3 and sC4) were compared. The processing pipelines and data are available on request (see section “Discussion”). Statistical analysis was performed with MS Excel 2010 and Real Statistics⁶. Because most of the samples did not present a normal distribution (Shapiro–Wilk test), non-parametric tests were performed.

RESULTS

Inter-Subject Data Variability

For each individually segmented rat brain, we computed the mean T1 and T2 values for the 29 regions (13 in each hemisphere and 3 non-lateralized regions). **Figure 2** shows these values for each region of the left hemisphere and for each rat, computed using the fC1 fitting pipeline and the sC4 multi-atlas segmentation.

We note that for both T1 and T2 values, the largest dispersion is for the ventricles (lateral, 3rd and 4th ventricles). On average, the differences between the minimum and maximum values of each region are 170 ms for T1 and 11 ms for T2 (left hemisphere regions, excluding ventricles). We obtained similar results for the right hemisphere (169 and 9.3 ms, respectively) and with the other pipelines (e.g., **Supplementary Figure S1** for an example using the fC2 fitting pipeline and the sC3 multi-atlas).

Inter-Center Acquisition Reproducibility

We studied the differences between T1 and T2 values computed from data acquired at aC1 and aC2 using the same pipelines.

Between the two centers, the differences (see **Supplementary Figure S2**) were significant for T2 (Mann–Whitney test $p < 2 \cdot 10^{-4}$, with 9% mean error), but not for T1 (Mann–Whitney test $p = 0.02$, with 2% mean error).

Control of Intra-Center Acquisition Reproducibility

We studied the scan-rescan differences for each subject (see **Supplementary Figure S3**). The differences were less than two standard deviations in all ROIs of all subjects, except in the left lateral ventricle (S32), the right olfactory bulb (S21) and the 3rd and 4th ventricles (S22). For T2, large differences were found in the left lateral ventricle (S32), and in the 3rd and 4th ventricles (S21 and S22). A Wilcoxon statistical test was run to compare the results between the first and second MR acquisition for T1 and T2, for each rat, and for different pipeline combinations. Differences were not statistically significant. The parameters of the linear regression between the results from the scan-rescan experiment for each subject were close to the identity curve with a R2 coefficient for T1 equal to (0.89, 0.89, and 0.94) and for T2 (0.88, 0.97, and 0.99) for rats S32, S32, and S22, respectively.

Fitting Pipeline Comparison

To compare results obtained with the three fitting pipelines, regressions were computed and indicated good consistency (see **Figure 3**, Top). The linear regression parameters were $y = 0.99x + 5.11$ ($R^2 = 0.99$) for T1 (C2f) vs. T1 (C1f), $y = 0.92x + 111.9$ ($R^2 = 0.98$) for T1 (C3f) vs. T1 (C1f), and $y = 0.93x + 101.94$ ($R^2 = 0.99$) for T1 (C3f) vs. T1 (C2f).

Similar results were obtained for T2 (see **Supplementary Figure S4**) and using two different segmentation pipelines (see **Supplementary Figure S4**). A Wilcoxon statistical test was run for each pair of pipelines. Differences were not statistically significant (mean error to identity for T2: 3.33%, for T1 1.04%).

Segmentation Pipeline Comparison

To compare results obtained using the two segmentation pipelines, regressions were computed. As for the fitting pipelines, **Figure 3** (bottom) shows a good concordance between the methods. The linear regression parameters were $y = 1.012x - 16.92$ ($R^2 = 0.99$) for T1 (C3s) vs. T1 (C4s) and $y = 1.0583x - 2.9489$ ($R^2 = 0.99$) for T2 (C3s) vs. T2 (C4s).

P-values obtained with a Wilcoxon test were 0.823 and 0.994 for T1 and T2, respectively. These values were obtained via the two implementations of the same multi-atlas segmentation method (mean error to identity of 0.24% for T1 and 0.81% for T2). Similar results were obtained when using the two other fitting methods (e.g., **Supplementary Figure S4** for fC2).

Comparison With Literature

Figure 4 shows the T1 and T2 values obtained in this study and those reported in literature. When literature only reported one cortical ROI, that value was replicated for all cortical ROIs of this study.

⁵<http://brainvisa.info/>

⁶Real Statistics Resource Pack software (Release 5.4). Copyright (2013 – 2018) Charles Zaiontz. www.real-statistics.com

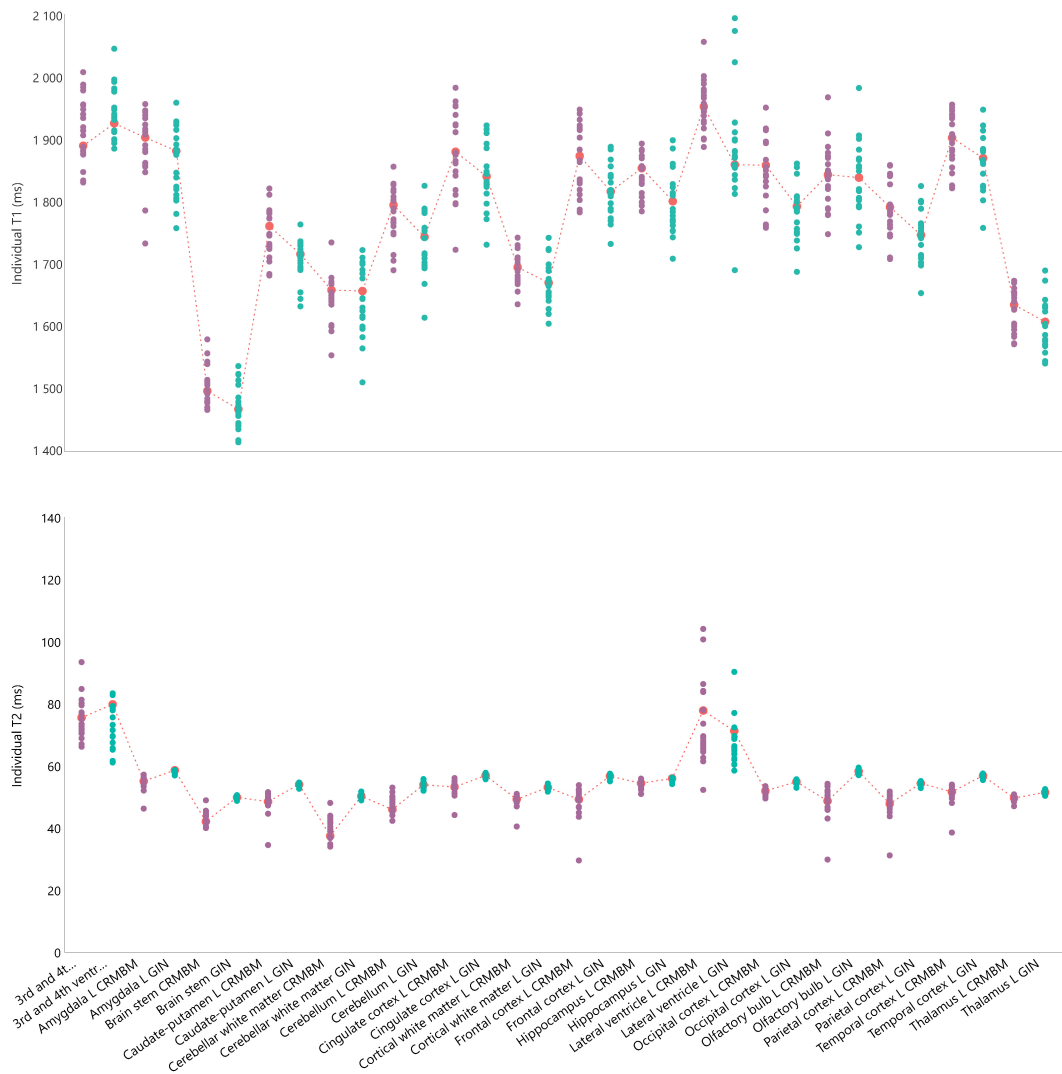


FIGURE 2 | Individual relaxation times for 16 regions of interest for the left hemisphere including 3 regions overlapping the two hemispheres. **Top:** Individual T1 values. **Bottom:** Individual T2 values. Green circles for aC1 values; purple circles for aC2 values and corresponding mean values indicated with a red mark and dash-line. The fC1 fitting pipeline and the sC4 multi-atlas segmentation were used.

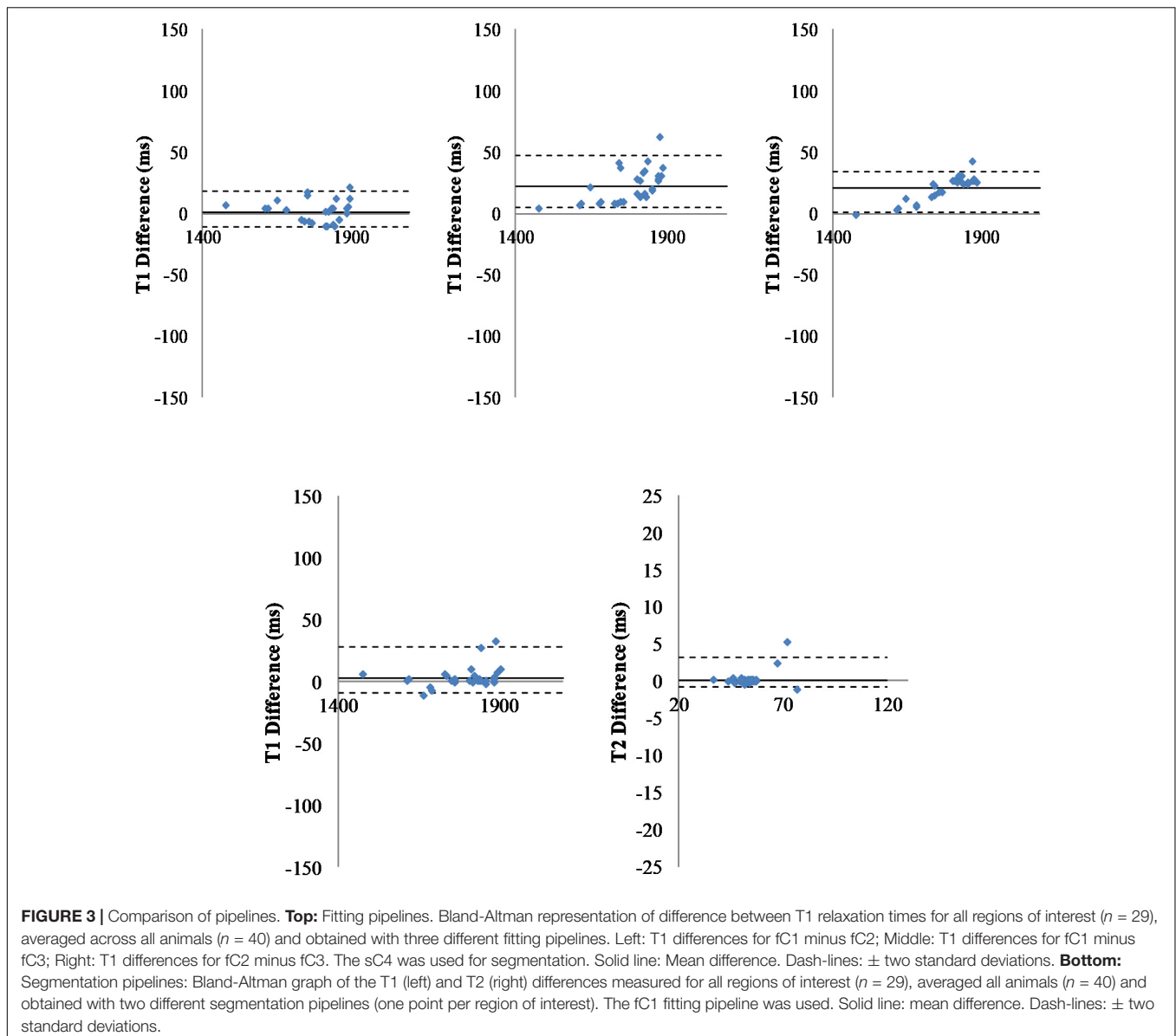
DISCUSSION

In this study, we report a multicenter T1 and T2 mapping of the rat brain at 7 Tesla. Four centers were involved: two contributed to data acquisition, and two centers provided two multi-atlas segmentation pipelines to derive relaxation times per brain region. To facilitate the pooling of the preclinical MR datasets, we used the SHaring NeuroImaging Resources (Shanoir) environment, initially developed for the web-oriented management of collaborative neuroimaging projects in Humans, and recently extended for preclinical studies (Small Animal Shanoir, SAS).

Data Pooling

We successfully combined MR data acquired on forty rats in two different centers. We took advantage of the fact that the

fleet of MR scanners for preclinical studies tends to be more uniform across labs than Human imaging systems. Indeed, the MR scanners in both centers were from the same manufacturer (Bruker Biospin) and, as indicated in **Table 1**, there were very few differences between the two systems. The acquisition sequence parameters could thus be set identical in both centers. Consequently, **Figure 3** shows a small dispersion of individual T1 and T2 values in brain regions, except for the ventricles (lateral and 3rd and 4th ventricles). Moreover, we noted a good intra-center reproducibility for T1 and T2 values obtained on three rats. There was no significant difference in the scan-rescan experiment of each rat. Good reproducibility was also obtained when using different processing solutions (**Supplementary Figure S3**). The observed differences for ventricles could be a consequence of the small number of voxels of these structures compared to other regions (3500 and around 11000 voxels for lateral and 3rd and



4th ventricles, respectively, versus 33000 voxels on average for the other structures) and to the large differences in relaxation times between brain tissue and cerebrospinal fluid. Moreover, in T1-weighted images, the contrast between ventricles and tissue was low. This made the registration process more prone to errors. Also, small movements of the cerebrospinal fluid in the ventricles during acquisition may lead to a biased estimation of relaxation times in these regions, especially for T2, which exhibits the largest difference between tissue and ventricles. Moreover, for some rats ($n = 3$), ventricles were found dilated. Such dilation may impact the global results. T1 values computed from data acquired at C1 or C2 using different fitting and segmentation pipelines were not different (see **Supplementary Figure S4**), except for fC3 fitting algorithm ($p < 0.01$). T2 differences were significantly different for all conditions. We cannot rule out a potential effect of the anesthesia conditions, since the gas

mixture was slightly different between the two centers (2% in air at C2 vs. 2% in a mixture of Air and O₂ (7:3)). However, no T2 differences were found in an additional experiment in which the effect of breathing air or 100% O₂ as carrier gas was tested. Another potential source of T2 difference between C1 and C2 may be that despite standard spoiling settings in the sequence, the T2 measurements may be affected by the presence of residual stimulated echo signal. Given the different transmit coils (single-channel for C1 and quadrature for C2), these signals may differ between C1 and C2 and account for differences found in T2 values.

Finally, we note that, in literature, T2 values generally seem more variable between centers than T1 values (see **Figure 4**). After examining multicenter data quality, we searched for possible differences when processing data with software developed in different centers.

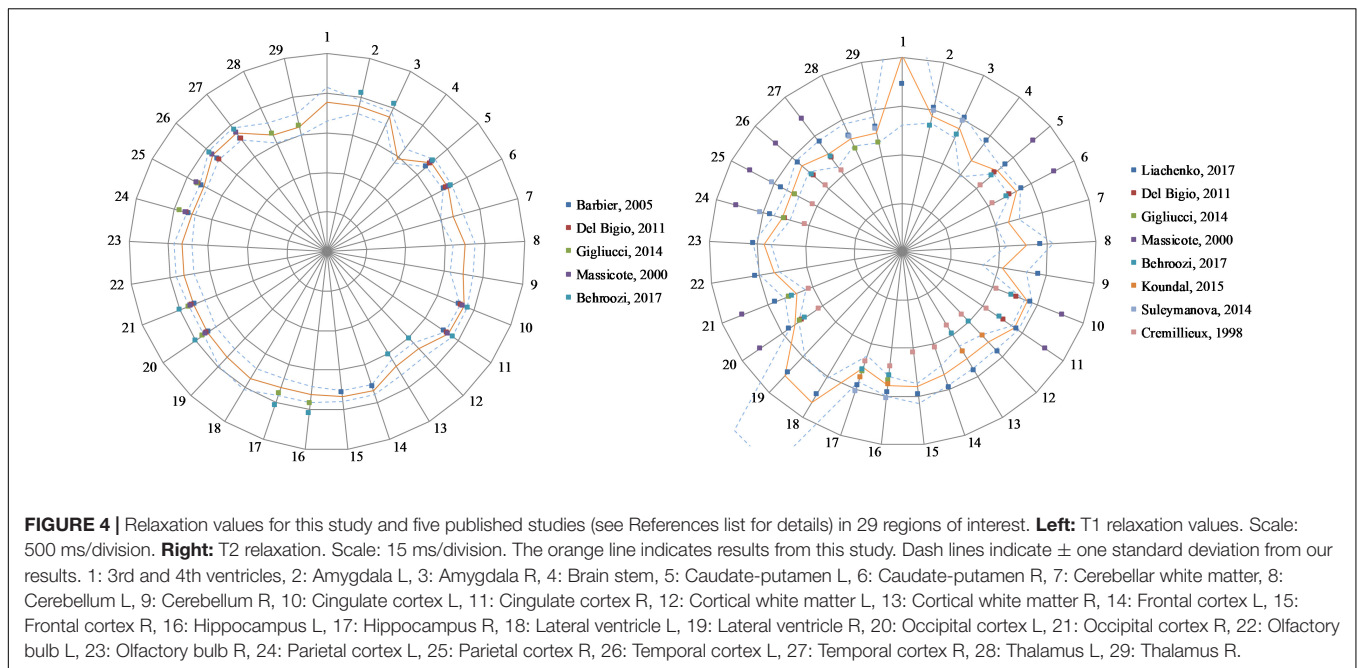


Image Processing Pipeline Comparison

The goal of this comparison was to explore whether data processing could be distributed to different centers using the solution locally developed rather than benchmarking them for selecting the best one. For relaxometry mapping, two main steps are required: fitting the raw data to extract relaxation times and segmenting the brain to compute mean values per brain area. Fitting data is clearly a simple mathematical operation. No consensus currently exists for this operation, and, as indicated in **Table 1**, differences exist in available solutions hosted in our three centers. Advantageously, the differences in fitting equation and in optimization methods did not impact the final results, neither for T1 nor for T2. Note that differences generated by the use of different fitting parameters were lower than those between the data acquisition centers and even those between data acquired at the same center.

For brain segmentation, we adopted a multi-atlas procedure. Multi-atlas techniques outperform single atlas approaches in accounting for individual structural variability (Wang et al., 2014). Here, we considered two implementations on two different platforms, BrainVISA and VIP, of the multi-atlas approach proposed in Lancelot et al. (2014) for rats. As mentioned in **Table 1**, some preprocessing steps differ: the registration [ANTS (Avants et al., 2010) vs. block-matching combined to Free Form Deformation (Lebenberg et al., 2010)] and the number of atlases used (11 vs. 12). Comparison of the parcelations obtained using the two methods revealed no differences in terms of parcel volume and DICE score. DICE were higher than 0.8 but for ventricles (see **Supplementary Figure S5**), suggesting an excellent overlap between parcelations. Differences were not significant when comparing T1 and T2 values obtained with the two multi-atlas segmentation procedures.

Reference Maps

Publicly available quantitative reference maps for longitudinal (T1) and transverse (T2) relaxation times are valuable for investigating and monitoring deviations from normality in animal models of pathologies. Both T1 and T2 values have been reported in literature based on a limited number of animals. We extended these works by using a larger number of animals ($n = 40$) and by providing values in additional regions. **Figure 4** shows the T1 and T2 values obtained in this study together with literature values. There is a good agreement between all T1 values. This is consistent with the low dispersion found between the two data providers (2%). The dispersion of literature values is larger for T2, especially when older studies are included. Similarly, we found a larger 9.5% dispersion between T2 values from our two data providers. Altogether, the values reported in this study are in good agreement with several recent publications (Del Bigio et al., 2011; Gigliucci et al., 2014; Suleymanova et al., 2014; Koundal et al., 2015; Liachenko and Ramu, 2017).

Limitations

Data came from only two providers running similar MR systems from the same manufacturer. This is, however, very common in the preclinical imaging community. Data were acquired in only one animal strain (Sprague Dawley) and at one age (young adult). These two factors may indeed modify relaxation times (Knight et al., 2016; Liu et al., 2018). Additional changes in values may also occur in case of physiological changes (perfusion, oxygenation, temperature). In addition, our reference maps could be refined by including even more individuals and data could be reanalyzed to further limit the impact of stimulated echoes in T2 estimates, a potential source of bias. However, data acquired and processed with the same methods as those used in the study would remain comparable to the reference maps available from this study.

DATA AVAILABILITY STATEMENT

Raw data and reference T1 and T2 relaxometry maps, as well as processing pipelines are freely available on request from the corresponding author MD. Please refer to the present paper in case of the reuse of these datasets and pipelines.

ETHICS STATEMENT

The animal study was reviewed and approved by the French Ministry of Agriculture (nos. 380945 and A3851610008 for experimental and animal care facilities for C1 and G130555 for C2).

AUTHOR CONTRIBUTIONS

TrD, FK, ThD, VN, EB, and MD contributed to the conception and design of the study and performed the data analysis. TrD, FK, EB, and MD acquired the data. TrD organized the database and pipelines. TrD and MD wrote the first draft of the manuscript. All authors contributed to the manuscript revision, read, and approved the submitted version.

REFERENCES

- Adhikari, B. M., Jahanshad, N., Shukla, D., Turner, J., Grotegerd, D., Dannlowski, U., et al. (2019). A resting state fMRI analysis pipeline for pooling inference across diverse cohorts: an ENIGMA rs-fMRI protocol. *Brain Imaging Behav.* 13, 1453–1467. doi: 10.1007/s11682-018-9941-x
- Ashburner, J. (2007). A fast diffeomorphic image registration algorithm. *Neuroimage* 38, 95–113. doi: 10.1016/j.neuroimage.2007.07.007
- Ashburner, J., and Friston, K. J. (2005). Unified segmentation. *Neuroimage* 26, 839–851. doi: 10.1016/j.neuroimage.2005.02.018
- Avants, B. B., Yushkevich, P., Pluta, J., Minkoff, D., Korczykowski, M., Detre, J., et al. (2010). The optimal template effect in hippocampus studies of diseased populations. *Neuroimage* 49, 2457–2466. doi: 10.1016/j.neuroimage.2009.09.062
- Barbier, E. L., Liu, L., Grillon, E., Payen, J. F., Lebas, J. F., Segebarth, C., et al. (2005). Focal brain ischemia in rat: acute changes in brain tissue T1 reflect acute increase in brain tissue water content. *NMR Biomed.* 18, 499–506. doi: 10.1002/nbm.979
- Barillot, C., Bannier, E., Commowick, O., Corouge, I., Baire, A., Fakhfakh, I., et al. (2016). Shanoir: applying the software as a service distribution model to manage brain imaging research repositories. *Front. ICT* 3:25. doi: 10.3389/fict.2016.00025
- Behroozi, M., Chwiesko, C., Strockens, F., Sauvage, M., Helluy, X., Peterburs, J., et al. (2018). In vivo measurement of T1 and T2 relaxation times in awake pigeon and rat brains at 7T. *Magn. Reson. Med.* 79, 1090–1100. doi: 10.1002/mrm.26722
- Chahine, L. M., Urbe, L., Caspell-Garcia, C., Aarsland, D., Alcalay, R., Barone, P., et al. (2018). Cognition among individuals along a spectrum of increased risk for Parkinson's disease. *PLoS One* 13:e0201964. doi: 10.1371/journal.pone.0201964
- Commowick, O., Istace, A., Kain, M., Laurent, B., Leray, F., Simon, M., et al. (2018). Objective evaluation of multiple sclerosis lesion segmentation using a data management and processing infrastructure. *Sci. Rep.* 8:13650.
- Cremillieux, Y., Ding, S., and Dunn, J. F. (1998). High-resolution *in vivo* measurements of transverse relaxation times in rats at 7 Tesla. *Magn. Reson. Med.* 39, 285–290. doi: 10.1002/mrm.1910390216
- Das, S., Glatard, T., Rogers, C., Saigle, J., Paiva, S., MacIntyre, L., et al. (2016). Cyberinfrastructure for open science at the montreal neurological institute. *Front. Neuroinform.* 10:53. doi: 10.3389/fninf.2016.00053
- de Graaf, R. A., Brown, P. B., McIntyre, S., Nixon, T. W., Behar, K. L., and Rothman, D. L. (2006). High magnetic field water and metabolite proton T1 and T2 relaxation in rat brain *in vivo*. *Magn. Reson. Med.* 56, 386–394. doi: 10.1002/mrm.20946
- Del Bigio, M. R., Slobodian, I., Schellenberg, A. E., Buist, R. J., and Kemp-Buors, T. L. (2011). Magnetic resonance imaging indicators of blood-brain barrier and brain water changes in young rats with kaolin-induced hydrocephalus. *Fluids Barriers CNS* 8:22.
- Deoni, S. (2010). Quantitative relaxometry of the brain. *Top. Magn. Reson. Imaging* 21, 101–113. doi: 10.1097/rmr.0b013e31821e56d8
- DiFrancesco, M. W., Rasmussen, J. M., Yuan, W., Pratt, R., Dunn, S., Dardzinski, B. J., et al. (2008). Comparison of SNR and CNR for *in vivo* mouse brain imaging at 3 and 7 T using well matched scanner configurations. *Med. Phys.* 35, 3972–3978. doi: 10.1118/1.2968092
- Dojat, M., Kennedy, D., and Niessen, W. (2017). MAPPING: management and processing of images for population ImagiNG. *Front. ICT* 4:18. doi: 10.3389/fict.2017.00018
- Gao, Y., Chen, Y., Ma, D., Jiang, Y., Herrmann, K. A., Vincent, J. A., et al. (2015). Preclinical MR fingerprinting (MRF) at 7 T: effective quantitative imaging for rodent disease models. *NMR Biomed.* 28, 384–394. doi: 10.1002/nbm.3262
- Gigliucci, V., Gormley, S., Gibney, S., Rouine, J., Kerskens, C., Connor, T. J., et al. (2014). Characterisation of the antidepressant properties of nitric oxide synthase inhibitors in the olfactory bulbectomised rat model of depression. *Eur. Neuropsychopharmacol.* 24, 1349–1361. doi: 10.1016/j.euroneuro.2014.05.003
- Glatard, T., Lartizien, C., Gibaud, B., da Silva, R. F., Forestier, G., Cervenansky, F., et al. (2013). A virtual imaging platform for multi-modality medical image simulation. *IEEE Trans. Med. Imaging* 32, 110–118. doi: 10.1109/tmi.2012.2220154
- Guilfoyle, D. N., Dyakin, V. V., O'Shea, J., Pell, G. S., and Helpert, J. A. (2003). Quantitative measurements of proton spin-lattice (T1) and spin-spin (T2) relaxation times in the mouse brain at 7.0 T. *Magn. Reson. Med.* 49, 576–580. doi: 10.1002/mrm.10371

FUNDING

This work and IRMaGe MR facility are partly funded by the French program “Investissement d’Avenir” run by the Agence Nationale de la Recherche (ANR-11-INBS-0006).

ACKNOWLEDGMENTS

The authors thank the technical staff of VIP (<https://www.creatis.insa-lyon.fr/vip/>), for their support for the multi-atlas segmentation algorithm portage, and the FLI-IAM team (https://portal.fli-iam.irisa.fr/preclinical_imaging_studies) for data management support.

SUPPLEMENTARY MATERIAL

The Supplementary Material for this article can be found online at: <https://www.frontiersin.org/articles/10.3389/fninf.2020.00022/full#supplementary-material>

- Hodge, M. R., Horton, W., Brown, T., Herrick, R., Olsen, T., Hileman, M. E., et al. (2016). ConnectomeDB—Sharing human brain connectivity data. *Neuroimage* 124(Pt B), 1102–1107. doi: 10.1016/j.neuroimage.2015.04.046
- Knight, M. J., McCann, B., Tsivos, D., Couthard, E., and Kauppinen, R. A. (2016). Quantitative T1 and T2 MRI signal characteristics in the human brain: different patterns of MR contrasts in normal ageing. *Magma* 29, 833–842. doi: 10.1007/s10334-016-0573-0
- Koundal, S., Gandhi, S., Kaur, T., Trivedi, R., and Khushu, S. (2015). Investigation of prolonged hypobaric hypoxia-induced change in rat brain using T2 relaxometry and diffusion tensor imaging at 7T. *Neuroscience* 289, 106–113. doi: 10.1016/j.neuroscience.2014.12.049
- Lancelot, S., Roche, R., Slimen, A., Bouillot, C., Levigoureux, E., Langlois, J. B., et al. (2014). A multi-atlas based method for automated anatomical rat brain MRI segmentation and extraction of PET activity. *PLoS One* 9:e109113. doi: 10.1371/journal.pone.0109113
- Landis, D., Courtney, W., Dieringer, C., Kelly, R., King, M., Miller, B., et al. (2016). COINS Data Exchange: an open platform for compiling, curating, and disseminating neuroimaging data. *Neuroimage* 124(Pt B), 1084–1088. doi: 10.1016/j.neuroimage.2015.05.049
- Lebenberg, J., Herard, A. S., Dubois, A., Dauguet, J., Frouin, V., Dhenain, M., et al. (2010). Validation of MRI-based 3D digital atlas registration with histological and autoradiographic volumes: an anatomofunctional transgenic mouse brain imaging study. *Neuroimage* 51, 1037–1046. doi: 10.1016/j.neuroimage.2010.03.014
- Li, J., Zhang, Q., Chen, F., Meng, X., Liu, W., Chen, D., et al. (2017). Genome-wide association and interaction studies of CSF T-tau/Abeta42 ratio in ADNI cohort. *Neurobiol. Aging* 57, 241–247.
- Liachenko, S., and Ramu, J. (2017). Quantification and reproducibility assessment of the regional brain T2 relaxation in naive rats at 7T. *J. Magn. Reson. Imaging* 45, 700–709. doi: 10.1002/jmri.25378
- Liu, C., Jin, C., Jian, Z., Wang, M., Li, X., Liu, H., et al. (2018). Assessment of myelination progression in subcortical white matter of children aged 6–48 months using T2-weighted imaging. *Neuroradiology* 60, 1343–1351. doi: 10.1007/s00234-018-2108-z
- Liu, J. V., Bock, N. A., and Silva, A. C. (2011). Rapid high-resolution three-dimensional mapping of T1 and age-dependent variations in the non-human primate brain using magnetization-prepared rapid gradient-echo (MPRAGE) sequence. *Neuroimage* 56, 1154–1163. doi: 10.1016/j.neuroimage.2011.02.075
- NAP (2018). In: *Open Science by Design: Realizing a Vision for 21st Century Research*. Washington, DC: National Academy of Sciences.
- Nelder, J., and Mead, R. (1965). A simplex method for function minimization. *Comput. J.* 7, 308–313. doi: 10.1093/comjnl/7.4.308
- Prescott, M. J., and Lidster, K. (2017). Improving quality of science through better animal welfare: the NC3Rs strategy. *Lab. Anim.* 46, 152–156. doi: 10.1038/labani.1217
- Rex, D. E., Ma, J. Q., and Toga, A. W. (2003). The LONI pipeline processing environment. *Neuroimage* 19, 1033–1048. doi: 10.1016/s1053-8119(03)00185-x
- Suleymanova, E., Gulyaev, M., and Chepurnova, N. (2014). Ginseng extract attenuates early MRI changes after status epilepticus and decreases subsequent reduction of hippocampal volume in the rat brain. *Epilepsy Res.* 108, 223–231. doi: 10.1016/j.eplepsyres.2013.11.018
- van de Ven, R. C., Hogers, B., van den Maagdenberg, A. M., de Groot, H. J., Ferrari, M. D., Frants, R. R., et al. (2007). T(1) relaxation in in vivo mouse brain at ultra-high field. *Magn. Reson. Med.* 58, 390–395. doi: 10.1002/mrm.21313
- Wang, J., Vachet, C., Rumble, A., Gouttard, S., Ouziel, C., Perrot, E., et al. (2014). Multi-atlas segmentation of subcortical brain structures via the AutoSeg software pipeline. *Front. Neuroinform.* 8:7. doi: 10.3389/fninf.2014.00007
- Wright, P. J., Mouglin, O. E., Totman, J. J., Peters, A. M., Brookes, M. J., Coxon, R., et al. (2008). Water proton T1 measurements in brain tissue at 7, 3, and 1.5 T using IR-EPI, IR-TSE, and MPRAGE: results and optimization. *Magma* 21, 121–130. doi: 10.1007/s10334-008-0104-8

Conflict of Interest: The authors declare that the research was conducted in the absence of any commercial or financial relationships that could be construed as a potential conflict of interest.

Copyright © 2020 Deruelle, Kober, Perles-Barbacaru, Delzescaux, Noblet, Barbier and Dojat. This is an open-access article distributed under the terms of the Creative Commons Attribution License (CC BY). The use, distribution or reproduction in other forums is permitted, provided the original author(s) and the copyright owner(s) are credited and that the original publication in this journal is cited, in accordance with accepted academic practice. No use, distribution or reproduction is permitted which does not comply with these terms.