



Characterization of the Gut Microbiota of the Antarctic Heart Urchin (Spatangoida) *Abatus agassizii*

Guillaume Schwob, Léa Cabrol, Elie Poulin, Julieta Orlando

► To cite this version:

Guillaume Schwob, Léa Cabrol, Elie Poulin, Julieta Orlando. Characterization of the Gut Microbiota of the Antarctic Heart Urchin (Spatangoida) *Abatus agassizii*. *Frontiers in Microbiology*, 2020, 11, 10.3389/fmicb.2020.00308 . hal-03147115

HAL Id: hal-03147115

<https://amu.hal.science/hal-03147115>

Submitted on 19 Feb 2021

HAL is a multi-disciplinary open access archive for the deposit and dissemination of scientific research documents, whether they are published or not. The documents may come from teaching and research institutions in France or abroad, or from public or private research centers.

L'archive ouverte pluridisciplinaire **HAL**, est destinée au dépôt et à la diffusion de documents scientifiques de niveau recherche, publiés ou non, émanant des établissements d'enseignement et de recherche français ou étrangers, des laboratoires publics ou privés.



Distributed under a Creative Commons Attribution 4.0 International License



Characterization of the Gut Microbiota of the Antarctic Heart Urchin (Spatangoida) *Abatus agassizii*

Guillaume Schwob^{1,2*}, Léa Cabrol^{1,3}, Elie Poulin¹ and Julieta Orlando^{2*}

¹ Laboratorio de Ecología Molecular, Instituto de Ecología y Biodiversidad, Facultad de Ciencias, Universidad de Chile, Santiago, Chile, ² Laboratorio de Ecología Microbiana, Departamento de Ciencias Ecológicas, Facultad de Ciencias, Universidad de Chile, Santiago, Chile, ³ Aix Marseille University, Univ Toulon, CNRS, IRD, Mediterranean Institute of Oceanography (MIO) UM 110, Marseille, France

OPEN ACCESS

Edited by:

David William Waite,
Ministry for Primary Industries,
New Zealand

Reviewed by:

Cecilia Brothers,
Walla Walla University, United States
Elliot Walter Jackson,
Cornell University, United States

*Correspondence:

Guillaume Schwob
guillaume_schwob@hotmail.fr
Julieta Orlando
jorlando@uchile.cl

Specialty section:

This article was submitted to
Microbial Symbioses,
a section of the journal
Frontiers in Microbiology

Received: 26 November 2019

Accepted: 11 February 2020

Published: 28 February 2020

Citation:

Schwob G, Cabrol L, Poulin E and
Orlando J (2020) Characterization
of the Gut Microbiota of the Antarctic
Heart Urchin (Spatangoida) *Abatus*
agassizii. *Front. Microbiol.* 11:308.
doi: 10.3389/fmicb.2020.00308

Abatus agassizii is an irregular sea urchin species that inhabits shallow waters of South Georgia and South Shetlands Islands. As a deposit-feeder, *A. agassizii* nutrition relies on the ingestion of the surrounding sediment in which it lives barely burrowed. Despite the low complexity of its feeding habit, it harbors a long and twice-looped digestive tract suggesting that it may host a complex bacterial community. Here, we characterized the gut microbiota of specimens from two *A. agassizii* populations at the south of the King George Island in the West Antarctic Peninsula. Using a metabarcoding approach targeting the 16S rRNA gene, we characterized the *Abatus* microbiota composition and putative functional capacity, evaluating its differentiation among the gut content and the gut tissue in comparison with the external sediment. Additionally, we aimed to define a core gut microbiota between *A. agassizii* populations to identify potential keystone bacterial taxa. Our results show that the diversity and the composition of the microbiota, at both genetic and predicted functional levels, were mostly driven by the sample type, and to a lesser extent by the population location. Specific bacterial taxa, belonging mostly to *Planctomycetacia* and *Spirochaetia*, were differently enriched in the gut content and the gut tissue, respectively. Predictive functional profiles revealed higher abundance of specific pathways, as the sulfur cycle in the gut content and the amino acid metabolism, in the gut tissue. Further, the definition of a core microbiota allowed to obtain evidence of specific localization of bacterial taxa and the identification of potential keystone taxa assigned to the *Desulfobacula* and *Spirochaeta* genera as potentially host selected. The ecological relevance of these keystone taxa in the host metabolism is discussed.

Keywords: heart sea urchin, deposit-feeder, *Abatus agassizii*, gut microbiota, core-microbiota, keystone, West Antarctic Peninsula, Antarctica

INTRODUCTION

Sea urchins (Echinodermata: Echinoid, Leske 1778) constitute one of the most abundant and ecologically important components of marine benthic ecosystems (Steneck, 2013). They represent over 900 species and have colonized all seabed around the world (Littlewood and Smith, 1995). Most of them, called “regular” species harbor a radial body symmetry, an epifaunal lifestyle in energy-rich

ecosystems and are mainly deep-grazing herbivores (De Ridder et al., 1982). Contrastingly, the “irregular” sea urchins (Irregularia Latreille, 1825) comprise an infra-class of the Echinoid, favored in oligotrophic environments and characterized by bilateral symmetry and a range of infaunal behaviors (Ziegler, 2014). This divergence in lifestyle is associated with a marked change in nourishment strategy. As a matter of fact, the irregular sea urchins are major deposit-feeders, feeding on detritus particles by the ingestion of surface sediment (De Ridder et al., 1987). Due to the substantial mixing and resuspension of the soft sediments through their feeding and movements (Hollertz and Duchêne, 2001; Lohrer et al., 2005), the irregular sea urchins from the order Spatangoida, commonly called heart urchins, are considered among the most active bioturbators of marine ecosystems (Queirós et al., 2013). These spatangoid urchins are the largest group of irregular echinoids with more than 200 living species and are particularly represented in the Antarctic continent (Ghiold, 1989; Thompson and Riddle, 2005).

Among the spatangoid urchins, the genus *Abatus* Troschel (family Schizasteridae) regroups 11 nominative species specifically distributed in distinct sub-Antarctic and Antarctic provinces. They are usually encountered burrowed few centimeters below the surface of muddy to sandy sediments, from very shallow waters down to 1000 m depth (Poulin and Feral, 1995; David et al., 2005). They are characterized as “poor-dispersers” owing to their direct development (i.e., no larval phase) and the release of the offspring from four dorsal marsupials in the immediate vicinity of the females (Poulin and Feral, 1995; David et al., 2005; Gil et al., 2009; Ledoux et al., 2012). Due to its abundance, wide (sub)Antarctic distribution and easy availability, the *Abatus* genus has been used as a model in numerous studies in the Southern Ocean biology areas such as embryology (Schatt and Feral, 1996), reproductive biology (Maturana et al., 2017), biogeography (Gil et al., 2009; Díaz et al., 2012) and ecology (Magniez, 1983; Lawrence et al., 1984; Palma et al., 2007; Guillaumot et al., 2018). Given its low dispersal and recolonization capacities, and its marked sensitivity to the modifications of seawater properties, *Abatus* is considered as a highly vulnerable species (Ledoux et al., 2012; Saucède et al., 2017; Guillaumot et al., 2018). As recently suggested for regular sea urchins (Brothers et al., 2018), the *Abatus*-associated microbiota might play a role in its host tolerance toward environmental changes.

The first evidence of the microbiota contribution to sea urchin metabolism was provided by Lasker and Giese (1954). The authors demonstrated that the bacteria from the gut of the herbivore sea urchin *Strongylocentrotus purpuratus* were able to digest the alga *Iridophycus flaccidum* within a week completely. Since then, there is a growing body of data about the diversity and the composition of the gut microbiota from grazing, wood-feeding and scraping regular echinoids (Becker et al., 2009; Zhang et al., 2014; Hakim et al., 2016; Hakim et al., 2019; Yao et al., 2019). Moreover, the implication of regular sea urchin microbiota has been documented in various aspects of the host life such as its digestion (Sawabe et al., 1995; Thorsen et al., 2003; Lawrence et al., 2013), its immunity (Becker

et al., 2009) and the nutrient transfer (Sauchyn and Scheibling, 2009). On the other hand, gut microbiota characterization of irregular sea urchins is scarcer and focused on a single species: *Echinocardium cordatum* from the Atlantic coast of Western Europe (Da Silva et al., 2006). As a result of its infaunal life and its feeding on detritus particles, the *E. cordatum* digestive tract has been described as mostly anoxic and was characterized by the predominance of fermentative bacteria able to metabolize refractile and sulphated carbohydrates in the ingested sediment (Thorsen, 1998; Da Silva et al., 2006). The degradation of this organic matter leads to high concentration of sulfates that are in turn reduced by sulfate-reducing bacteria, such as *Desulfonema*. Contrastingly, Thorsen (1998) showed that the immediate vicinity of *E. cordatum* gut was locally more oxygenated, particularly at intestinal nodules coated with microbial mats that host filamentous sulfur-oxidizing bacteria from the *Thiotrix* genus (Brigmon and De Ridder, 1998). These bacteria would be able to re-oxidize the sulfide produced by sulfate-reducing bacteria, providing a detoxifying effect to the host (De Ridder and Brigmon, 2003; Da Silva et al., 2006).

The microbial communities associated with echinoderms have been rarely investigated in Antarctica (Giudice et al., 2019). To the best of our knowledge, the microbiota of a single regular sea urchin species (i.e., *Sterechinus neumayeri*) has been explored in the Antarctic continent through a culture-dependent approach, highlighting the antibiotic and metal resistance capacity of isolated bacteria from the coelomic fluid of *S. neumayeri* collected in Fildes Peninsula, King George Island (González-Aravena et al., 2016). Despite its status of a model genus and its ecological importance in the Antarctic and Subantarctic benthic ecosystems, there is no description of the gut microbiota of the deposit-feeder *Abatus*. *Abatus agassizii* (Mortensen, 1951) is an endemic irregular sea urchin species distributed in sporadic and dense populations, primarily between 1 and 10 m depth in sheltered bays from the Fildes Bay of King George Island, South Shetland Islands, Antarctica (Palma et al., 2007; Díaz et al., 2012). Notwithstanding the low complexity of its feeding behavior (i.e., sediment filtration), it harbors a long (i.e., about three times the length of the individual) and twice-looped digestive tract, characterized by slow food transit (i.e., 72–97 h) (Thompson and Riddle, 2005), and consisting in several regions – buccal cavity, anterior esophagus, posterior esophagus, anterior stomach, posterior stomach, intestine and rectum – all filled with sediment (Ziegler, 2014). Thus the structure and the physiology of *A. agassizii* gut are strong evidence supporting the presence of a unique, resident and beneficial gut microbiota that may contribute to the host nutrition.

In the present study, we provide a comprehensive description of *A. agassizii* gut microbiota through a 16S rRNA metabarcoding approach focusing on three types of samples: the gut content, the gut tissue and the surrounding sediment. Our goals were (i) to evaluate the differentiation of the microbiota in terms of diversity, community composition and putative functional capacity among the sample types, (ii) to determine the existence of a core microbiota in *A. agassizii* individuals from distinct populations, (iii) to investigate the co-occurrence patterns among

the core bacterial taxa to highlight potential keystone within hosts microbiota, and (iv) to analyze the contribution of neutral processes (i.e., ecological drift and passive dispersal) to *Abatus* microbiota assembly.

MATERIALS AND METHODS

Sample Collection and Preparation

Adult *Abatus agassizii* sea urchins ($n = 14$) were sampled in January 2019 from two populations less than 2 km apart, in a sandy habitat at 7 m depth off the coast of the Ardley Island ($62^{\circ}12'32.4''\text{S}$ $58^{\circ}55'44.399''\text{O}$) (referred to as “Ardley” site), and at 2 m depth off the coast of the Antarctic China Base “Great Wall” ($62^{\circ}13'7.644''\text{S}$ $58^{\circ}57'28.295''\text{O}$) (referred to as “China” site), in the Fildes Peninsula, King George Island, South Shetland Islands (Antarctica). Once collected, sea urchin specimens were immediately stored in a tank at 4°C containing *in situ* seawater and sediment. Between 1–12 h after sampling, sea urchins were measured and dissected to collect the whole gut content (i.e., ingested sediment filling the digestive tract). The gut tissue (i.e., whole gut except the caecum) was excised and gently rinsed with nuclease-free sterile water (Winkler, Santiago, Chile). Superficial sediment samples from the immediate vicinity of the *A. agassizii* were also collected as the food source of the sea urchins ($n = 3$ and $n = 5$ in Ardley and China sites, respectively). A total of 36 samples – 8 external sediments, 14 gut contents and 14 gut tissues – were collected and kept frozen at -20°C for molecular analyses.

DNA Extraction, 16S rRNA Amplification and Sequencing

Gut tissue samples were homogenized using a mortar and pestle in aseptic conditions. Genomic DNA was extracted from 0.35 g of defrosted samples from the gut content and the external sediments, and from the totality of the homogenized gut tissue samples, using the DNeasy® PowerSoil® Kit (Qiagen, Hilden, Germany) according to the manufacturer's protocol. An amplicon library of the V4–V5 hypervariable region of the 16S rRNA gene was created using the primers 515F 5'-GTGYCAGCMGCCGCGTA-3' and 926R 5'-CCCGYCAATTCMTTTRAGT-3' (Parada et al., 2016), tagged with Illumina adaptor sequences supplied by the sequencing company. PCR amplification was performed with a mix containing 5 μL template DNA (40–200 ng), 0.5 mM of each primer, 25 μL of Phusion Hot Start II High-Fidelity PCR Master Mix (Thermo Fisher Scientific, Vilnius, Lithuania) and nuclease-free water (Thermo Fisher Scientific, Vilnius, Lithuania, *q.s.* 50 μL). The reaction conditions were an initial denaturation of 3 min at 98°C , 32 two-step cycles of 10 s at 98°C and 15 s at 72°C , and a final extension step of 5 min at 72°C . Quantity and quality of the PCR products were checked on an electrophoresis gel. Amplicons were fused with Illumina barcodes and sequencing was completed using the paired-end sequencing technology (2×250 bp) with the chemistry V2 on Illumina MiSeq platform at Genotoul GIS facility (Toulouse, France).

Metabarcoding Data Processing and Analysis

Reverse and forward reads generated from the 36 samples were processed using the open-source software Mothur (v.1.42.3) (Schloss et al., 2009). Reads were paired and trimmed according to their length and their content in homopolymers and ambiguous bases. The criteria were one single error in the primer sequence, a maximum of 8 homopolymers and 0 ambiguous bases. Short (<370 nt) and long (>380 nt) reads were discarded. Chimeras were removed with Uchime implemented in Mothur (Edgar et al., 2011). Cleaned sequences were aligned using the *kmer* searching function in SILVA alignments database (release 132) and were assigned in a taxonomic classification (SILVA database) (Quast et al., 2013). Any affiliations to chloroplasts, mitochondria or Eukarya were removed from the dataset. Processed sequences were then clustered into operational taxonomic units (OTU) at 97% identity. To eliminate erroneous sequences and assignments, OTUs with relative abundance $<0.005\%$ were discarded as recommended in Bokulich et al. (2013). Samples were rarefied to the number of sequences present in the smallest sample dataset (6100 sequences). The Fastq files generated in this study have been deposited at the National Center for Biotechnology Information (NCBI)¹ under the project accession number PRJNA590493 (submission ID: SUB6567135).

Bacterial Community Diversity and Composition

Rarefaction curves were calculated from the non-rarefied OTU table, with samples pooled according to their type and site of provenance, using the *rarefaction.single* function implemented in Mothur, and were then visualized in R with the *ggplot* package. The 95% confidence intervals of observed richness were calculated directly in Mothur with 5000 iterations (randomization). Richness, diversity indices and Bray–Curtis dissimilarity matrix were calculated from the rarefied OTU table using the *vegan* package in R (Oksanen et al., 2011). Richness and diversity indices were compared among sample types using the non-parametric Kruskal–Wallis test followed by a *post hoc* Dunn's test in R with a correction of *p-value* using the Holm's method (significance threshold $p < 0.05$) (Dunn, 1961) to determine which groups were different. Taxonomic assignments were pooled at the class level, filtered at 0.05% abundance and comparisons among sample types were performed using the same test and parameters previously mentioned. Additionally, a Venn diagram based on OTU presence/absence was computed from the rarefied OTU table using the *VennDiagram* R package. Bray–Curtis matrix was used to perform non-metric multidimensional scaling (NMDS) with the *metaMDS* function, associated with the *envfit* function to identify the discriminant OTUs most correlated with the samples' ordination (vegan package). Permanova (permutational multivariate analysis of variance) using both *adonis* and *pairwise.adonis* functions, was applied to investigate the contribution of site and sample type contribution in the samples' clustering. These functions are

¹www.ncbi.nlm.nih.gov

implemented in the *vegan* and *pairwiseAdonis* R packages, respectively, Oksanen et al. (2011), Martinez Arbizu (2017). Pairwise comparisons were performed using the R package *limma*, with moderated *t*-tests on log-transformed OTU relative abundance and corrected for multiple hypothesis testing (Smyth, 2005; Bulgarelli et al., 2012) to identify the differentially abundant OTUs in each of the three sample types. Focusing on the significantly enriched OTUs in each sample type compared to the two others (p -value < 0.05), a heatmap and a ternary plot were produced [vegan package and personal R script adapted from Bulgarelli et al. (2012)].

Functional Predictions

Functional predictions of the bacterial communities from the gut content and the gut tissue were determined through the Phylogenetic Investigation of Communities by Reconstruction of Unobserved States (PICRUSt v2.0.0) as described in Douglas et al. (2019). The PICRUSt pipeline was run using the representative sequences of the OTUs from the rarefied OTU table using the *get.oturep* function in Mothur. Hidden state predictions were performed through the *hsp.py* script by the Maximum Parsimony method for 16S rRNA gene copy number, Enzyme Commission (EC) numbers and Kyoto Encyclopedia of Genes and Genomes Orthology (KO) abundances, along with the calculation of the Nearest Sequenced Taxon Index (NSTI). Any OTU-representative sequence with an NSTI value higher than two was classified as uncharacterized phyla and was discarded for further analysis. Then, the copy numbers of gene families were predicted for each OTU with the *metagenome_pipeline.py* script, providing the OTU abundances per sample normalized by the predicted 16S rRNA gene copy numbers per OTU. Finally, pathway-level abundances were predicted with *pathway_pipeline.py* function assigning EC numbers to MetaCyc reactions and KO abundances in Kyoto Encyclopedia of Genes and Genomes (KEGG) pathways. Potential functional profiles were analyzed using the STAMP (v2.1.3) software (Parks et al., 2014). Comparisons between sample type community features were achieved through Welch's *t*-test, p -values were adjusted with the Benjamini–Hochberg FDR multiple-test correction, and comparisons with p -value < 0.05 were considered significant.

Core Microbiota, Co-occurrence Networks and Neutral Model

A core microbiota was defined for each gut-related sample type – gut content and gut tissue – as the fraction of the community common to both Ardley and China sites. Shared OTUs were defined as OTUs prevalent in 75% of the samples from the same type in both sites. Co-occurrence analysis was performed on the gut core microbiota of each site through the Co-occurrence Network software (CoNet, v1.1.1) (Faust and Raes, 2016), following the approach described in Hakim et al. (2019). Briefly, OTUs with a cumulative sum of relative abundance per sample lower than 100 (i.e., <15% sequence relative abundance) were discarded from the analysis. Co-occurrence scores were computed using two correlation

(Pearson, Spearman), two dissimilarity (Kullback–Leibler, Bray–Curtis) and one similarity (mutual information) measures detailed in Faust and Raes (2016). The 100 most positive and most negative edges, which represent the top 100 co-presence and co-exclusion, respectively, were selected for the randomization step. Multi-edges scores were randomized by bootstrapping at 100 iterations, unstable edges were filtered out, and p -values were merged using the Brown method and Benjamini–Hochberg method for multiple test correction (Brown, 1975; Choma et al., 2016). The significance threshold for corrected p -values of edges was set at p < 0.05. Co-occurrence networks were visualized and edited in Cytoscape v3.7.1 (Shannon et al., 2003) using the Compound Spring Embedder (CoSE) layout. Topological parameters (i.e., average network centralization, characteristic path length, average number of neighbors, network density and heterogeneity) were determined with the plugin NetworkAnalyzer (v2.7) implemented in Cytoscape. For each taxon of both networks, three-node parameters, the number of edges, the closeness centrality, and the betweenness centrality, were plotted using the *ggplot* R package (Wickham, 2006). Hub taxa were manually identified based on their high centrality and connectivity within each network compared with the other taxa (Berry and Widder, 2014; Agler et al., 2016).

The potential contribution of neutral processes (i.e., stochastic factors such as ecological drift and passive dispersion) in microbiota assemblies from gut content, gut tissue and the combination of both was assessed by the neutral community model proposed by Sloan et al. (2006), applying the R code of Burns et al. (2016). The migration rate estimator (m) was used to evaluate if the observed frequencies and mean relative abundances of OTUs fit the neutral model. The fit performance to the sample type was assessed with a generalized R-squared method (Burns et al., 2016). The Akaike Information Criterion (AIC) was used to assess the fit between neutral model and a binomial model, the latter representing a random sampling from the metacommunity without drift or dispersal limitations. Well-predicted OTUs supposedly driven by stochastic factors were comprised within the 95% confidence limits, while deviated OTUs that fell above or below the 95% confidence interval were more likely influenced by deterministic factors (i.e., microbial interactions, host selection, among others).

RESULTS

Sequencing and Data Processing

A total of 1,298,790 reverse and forward raw reads was generated from the 36 samples. After the sequencing processing, 851,938 cleaned sequences were clustered into 113,088 unique OTUs at 97% identity. The OTU table was then condensed into 1015 unique OTUs and 652,123 sequences applying the <0.005% relative abundance threshold. Read numbers per sample varied from 6100 to 32,000. An equivalent mean of reads per sample was obtained for Ardley and China sites (19,083 versus 18,253 on average, respectively). The rarefaction curves of the samples pooled according to the sample type and site nearly reached

saturation suggesting an overall good sequencing coverage (Supplementary Figure S1).

Changes in Alpha Diversity Along the Host Gradient

All alpha diversity analysis performed (observed richness, Shannon and Simpson indices) led to the same gradient of microbial diversity among the external sediments (highest diversity), the gut content (intermediate diversity) and the gut tissue (lowest diversity) on China site (Dunn test, p -values < 0.05) and pooled sites dataset (Dunn test, p -values < 0.02) (Table 1 and Supplementary Table S1). The samples from Ardley site tend to harbor the same pattern of diversity (gut content < gut tissue and external sediment < gut tissue, Dunn test, p -values < 0.02), at the exception of the external sediment and the gut content samples that did not showed any significant difference on richness, Shannon and Simpson indices (Dunn tests, p -values = 0.076) (Supplementary Table S1).

Gut and External Sediment Bacterial Community Composition

Applying a filter at >0.5% of class relative abundance, we identified 11 bacterial classes (Figure 1) and 113 genera (data not shown) among *A. agassizii* gut microbiota and external sediment samples. External sediment samples of Ardley and China sites were characterized by co-dominance of *Bacteroidia* (Ardley 37.2% and China 43.6%) and *Gammaproteobacteria* (Ardley 36.1% and China 30.7%), and in a lesser extent of *Planctomycetacia* (Ardley 9.3% and China 5.3%) (Figure 1). When comparing bacterial class abundances among sample types at intra- and inter-site levels, the same pattern was essentially conserved between them, despite minor but significant variations in the abundance of some bacterial classes between the two sites (Supplementary Table S2). The same classes were maintained between the external sediment and the gut content, but their relative abundances varied. The gut content samples were characterized by two major significant enrichments, in *Planctomycetacia* becoming the dominant class (43.3 and 30.4% of the total community for Ardley and China, respectively), and in *Alphaproteobacteria* (12.8 and 13.8% of the total community for Ardley and China, respectively), as well as an impoverishment in *Gammaproteobacteria* (18.1 and 12.3% of the total community for Ardley and China, respectively), and *Bacteroidia* classes (12.2% of the total community and significant for Ardley only), with respect to the external sediment samples.

The most striking taxonomic shifts were observed in the gut tissue samples, mainly dominated by the class *Spirochaetia* (39.3 and 45.1% of the total community for Ardley and China, respectively), that was barely undetected in the two other sample types ($<0.03 \pm 0.03\%$ total community, on average), and followed by *Deltaproteobacteria* (30.3 and 13.6% of the total community for Ardley and China, respectively). The relative abundances of *Gammaproteobacteria* (0.6 and 7.8% of the total community for Ardley and China, respectively), and *Planctomycetacia* (0.6 and 1.1% of the total community for Ardley and China, respectively), also decreased in the gut tissue in comparison with the gut

content samples (Figure 1 and Supplementary Table S2). Unlike the external sediment and the gut content samples, there was no significant differences between the gut tissue samples of Ardley and China sites, mainly because of the high variability between replicates (Supplementary Table S2).

Beta-Diversity of Bacterial Community Among Sites and Sample Types

We compared *A. agassizii* bacterial community composition in the different sites and sample types through non-metric multidimensional scaling (NMDS) computed from Bray–Curtis distances. In both sites, the bacterial composition was mainly driven by the sample type ($p < 0.001$) (Figure 2 and Table 2), with a significantly distinct bacterial community among the external sediment, the gut content and the gut tissue samples (Supplementary Table S3). A weaker but significant effect of the sampling site was also observed on the bacterial community composition (Table 2). While this site effect was observed for external sediment and gut content samples (Table 2), it was not detected in the case of the gut tissue samples (Table 2), likely due to the higher variability of bacterial community composition among individual replicates, as visible by the dispersion on the NMDS (Figure 2).

Fifteen OTUs were identified as major drivers of the bacterial community ordination; 4 OTUs of unknown *Gammaproteobacteria*, and the *Flavobacteriaceae* and *Sandaracinaceae* families, 3 OTUs of the *Rhodobacteraceae* and *Pirullulaceae* families, and 8 OTUs of the *Spirochaetaceae*, *Bacteroidetes* BD2-2, *Lentimicrobiaceae* and *Desulfobacteraceae* taxa were discriminant of external sediment, gut content and gut tissue community, respectively (Figure 2, Supplementary Table S3). The closest relative sequences of OTU-2, OTU-7, and OTU-11 were previously found in marine sediment from the same area (i.e., King George Island) (Vázquez et al., 2017) (Supplementary Table S4).

Functional Attribute Predictions of the *A. agassizii* Microbiota

A total of 2063 Enzyme Commission (EC) numbers and 409 MetaCyc pathways were identified from the 1015 OTUs of the study. As for bacterial taxonomic composition, the sample type was the major factor driving bacterial functional composition in both EC numbers and MetaCyc pathways, explaining more than 40% of the variance observed (Figure 3A, Supplementary Table S5). Each sample type was different from the two others based on its EC numbers and MetaCyc pathways composition (Supplementary Table S5). Besides, the abundances of EC numbers and MetaCyc pathways significantly decreased from the external sediment to the gut tissue suggesting a gradient of microbiota specialization (Supplementary Figure S2). No site effect was observed on EC numbers nor MetaCyc pathways ($p > 0.5$, $R^2 = 0.009$, Figure 3, Supplementary Table S5), contrary to the slight site-effect observed at the taxonomic level, which could be explained by functional redundancy. The relative abundance of 1233 ECs and 296 MetaCyc pathways were significantly different among the three sample types

TABLE 1 | Alpha diversity of *Abatus agassizii* gut and external sediment microbiota.

Site	Sample types	Replicates	Richness	Shannon index	Simpson index
Ardley	External sediment	3	547.0 ± 3.5 ^a	5.18 ± 0.06 ^a	0.99 ± 0.002 ^a
	Gut content	7	390.7 ± 21.1 ^a	4.70 ± 0.04 ^a	0.98 ± 0.002 ^a
	Gut tissue	7	104.1 ± 15.5 ^b	2.03 ± 0.23 ^b	0.72 ± 0.080 ^b
China	External sediment	5	559.2 ± 6.1 ^a	5.24 ± 0.03 ^a	0.98 ± 0.001 ^a
	Gut content	7	372.3 ± 26.0 ^b	4.17 ± 0.06 ^b	0.94 ± 0.005 ^b
	Gut tissue	7	120.6 ± 17.0 ^c	2.39 ± 0.20 ^c	0.79 ± 0.040 ^c
Sites pooled	External sediment	8	554.6 ± 4.4 ^a	5.22 ± 0.03 ^a	0.98 ± 0.001 ^a
	Gut content	14	381.5 ± 15.7 ^b	4.43 ± 0.08 ^b	0.96 ± 0.006 ^b
	Gut tissue	14	112.4 ± 10.9 ^c	2.21 ± 0.15 ^c	0.76 ± 0.042 ^c

Average values ± standard errors are presented. Letters represent the significance of sample type comparisons based on Dunn tests ($p < 0.05$).

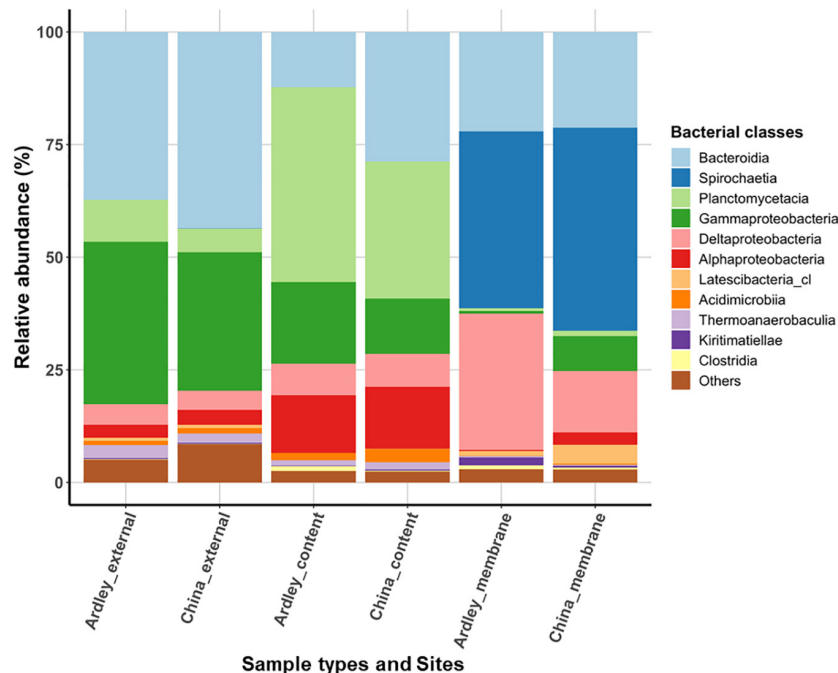


FIGURE 1 | Relative abundance of bacterial classes in *Abatus agassizii* gut and external sediment microbiota in Ardley and China sampling sites. Bacterial classes were filtered at >0.5% relative abundance threshold and the average of the replicate abundances are presented for each condition (i.e., for each combination of sites and sample types). Each color represents a distinct bacterial class.

(data not shown), suggesting a functional differentiation of the community along the digestive tract. The five bacterial functions most enriched in the gut content in comparison with the external sediment were related to tRNA processing, sulfur metabolism, fatty acid degradation and lipid synthesis (Figure 3B). The five functions most enriched in the gut tissue in comparison with the gut content samples were related to the peptidoglycan synthesis, the Krebs cycle and amino acids synthesis/degradation (Figure 3B).

Sample Type Specificity of Bacterial OTUs

We used a Venn diagram to evaluate the shared versus the exclusive OTUs among sample types. About 30% of the OTUs

were shared among the external sediment, the gut content and the gut tissue samples (Figure 4A). The gut tissue presents the highest number of unique OTUs compared with the other sample types (28% of the total gut tissue OTUs), while the external sediment and the gut content shared 84% of their OTUs between each other (Figure 4A). To further identify the bacterial OTUs' profiles of each sample type that were responsible for the observed differentiation of external sediment and *A. agassizii* microbiota, pairwise comparisons of moderated *t*-tests were used and the identified OTUs were represented under a ternary plot (Figure 4B). From the 837, 775 and 500 distinct OTUs present in the external sediment, the gut content and the gut tissue samples, we found 59, 64, and 23 OTUs significantly enriched in the external sediment, the gut content and the gut tissue, respectively (e.g., more abundant in

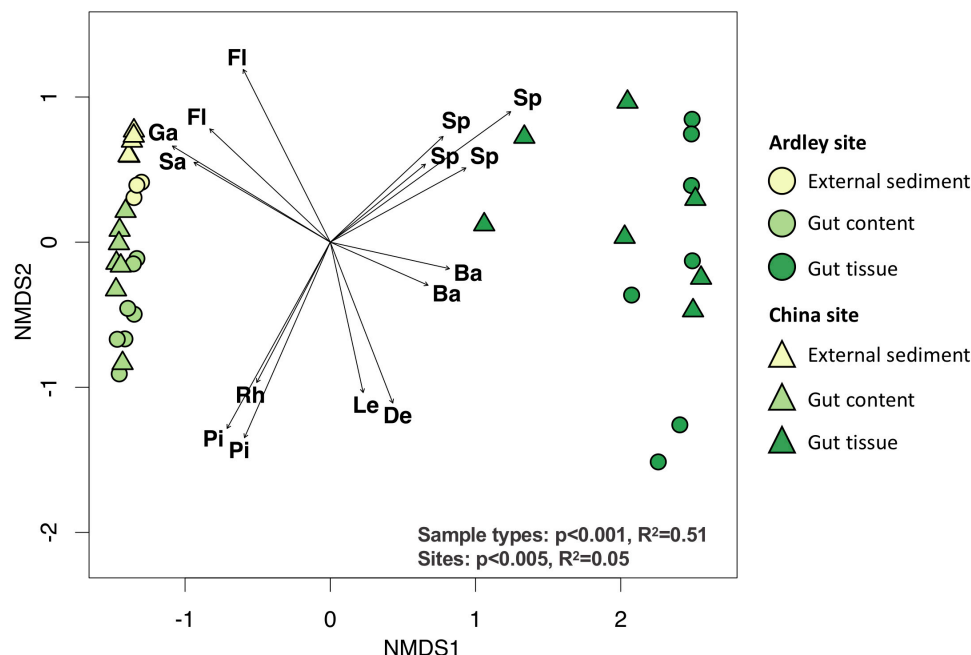


FIGURE 2 | Non-metric multidimensional scaling ordination of the bacterial community composition of the *Abatus agassizii* gut and external sediment microbiota. Colors are assigned to the different sample types. Circles and triangles represent samples from Ardley and China sites, respectively. The arrows represent the variations of the 15 discriminant OTUs most significantly correlated with community ordination (envfit, $p < 0.05$). The letters indicate the taxonomic identification at the family level of the discriminant OTUs (Ba: *Bacteroidetes* BD2-2, De: *Desulfobacteraceae*, FI: *Flavobacteriaceae*, Ga: *Gammaproteobacteria* unclassified, Le: *Lentimicrobiaceae*, Pi: *Pirullulaceae*, Rh: *Rhodobacteraceae*, Sa: *Sandaracinaceae*, Sp: *Spirochaetaceae*). Effect of the sample type and the site was tested using permutational multivariate analysis of variance (Adonis test) on Bray–Curtis distance matrix computed from the OTU table (details provided in **Supplementary Table S2**).

TABLE 2 | Multivariate permutation test on bacterial community dissimilarities (beta-diversity).

Sample grouping	Df	Sums of square	F-statistics	R^2	p-Value	Significance
Site effect	1	0.578	3.896	0.049	0.002	**
Sample type effect	2	6.013	20.347	0.512	0.001	***
Site*Sample type effect	2	0.733	2.479	0.062	0.009	**
External sediment	1	0.480	26.033	0.813	0.020	*
Gut content	1	0.574	6.480	0.351	0.004	**
Gut membrane	1	0.255	0.937	0.072	0.466	ns

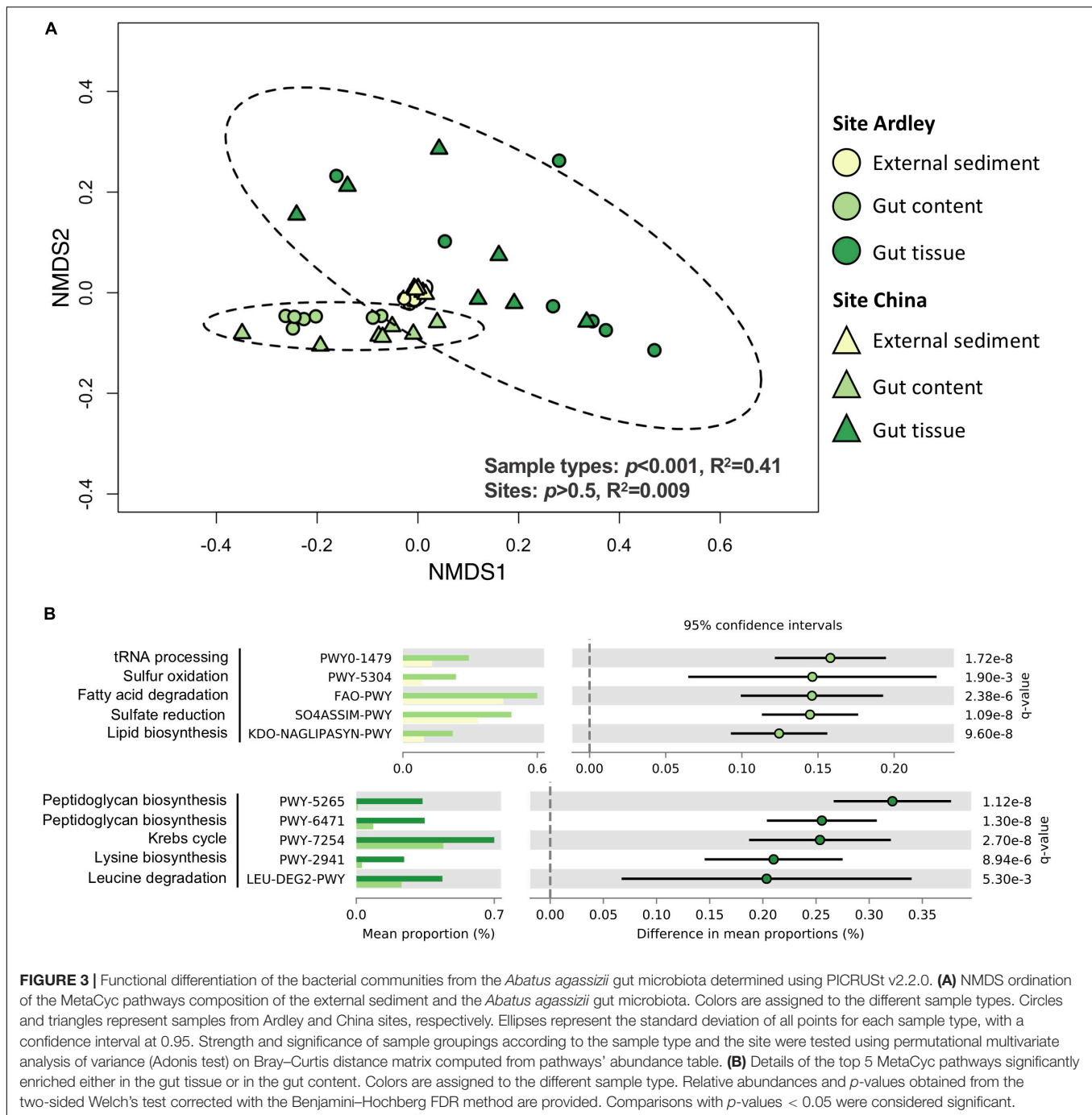
Multivariate permutation test was performed on Bray–Curtis dissimilarity matrix of the bacterial community from each sample type and site combination computed. P-values assess the significant effect of the sites and the sample type into the sample grouping. Site effect was additionally evaluated on each sample types. A total of 999 permutations were performed. Significance: ***p-value < 0.001; **p-value < 0.01; *p-value < 0.05; ns, non-significant.

external sediment versus gut content and in external sediment versus gut tissue, $FDR < 0.05$) (Figures 4A,B). These OTUs, enriched in the external sediment, the gut content and the gut tissue, were mainly *Flavobacteriaceae* (34%), *Pirellulaceae* (58%), and *Spirochaetaceae* (35%), respectively (Supplementary Figure S3), and were consistent with the previous mentioned 15 OTUs that mostly drive the bacterial community ordination (Section “Sample Type Specificity of Bacterial OTUs,” Figure 2). Based on these OTUs-enriched profiles, all samples clustered according to the sample type (Figure 4C). Consistent with the previous Bray–Curtis analysis and unlike to the gut tissue, the clustering of external sediment OTUs-enriched profiles, and in a lesser extent for gut content, is marked by the effect of the site (Figure 4C).

Core Microbiota, Co-occurrence Networks and Neutral Model

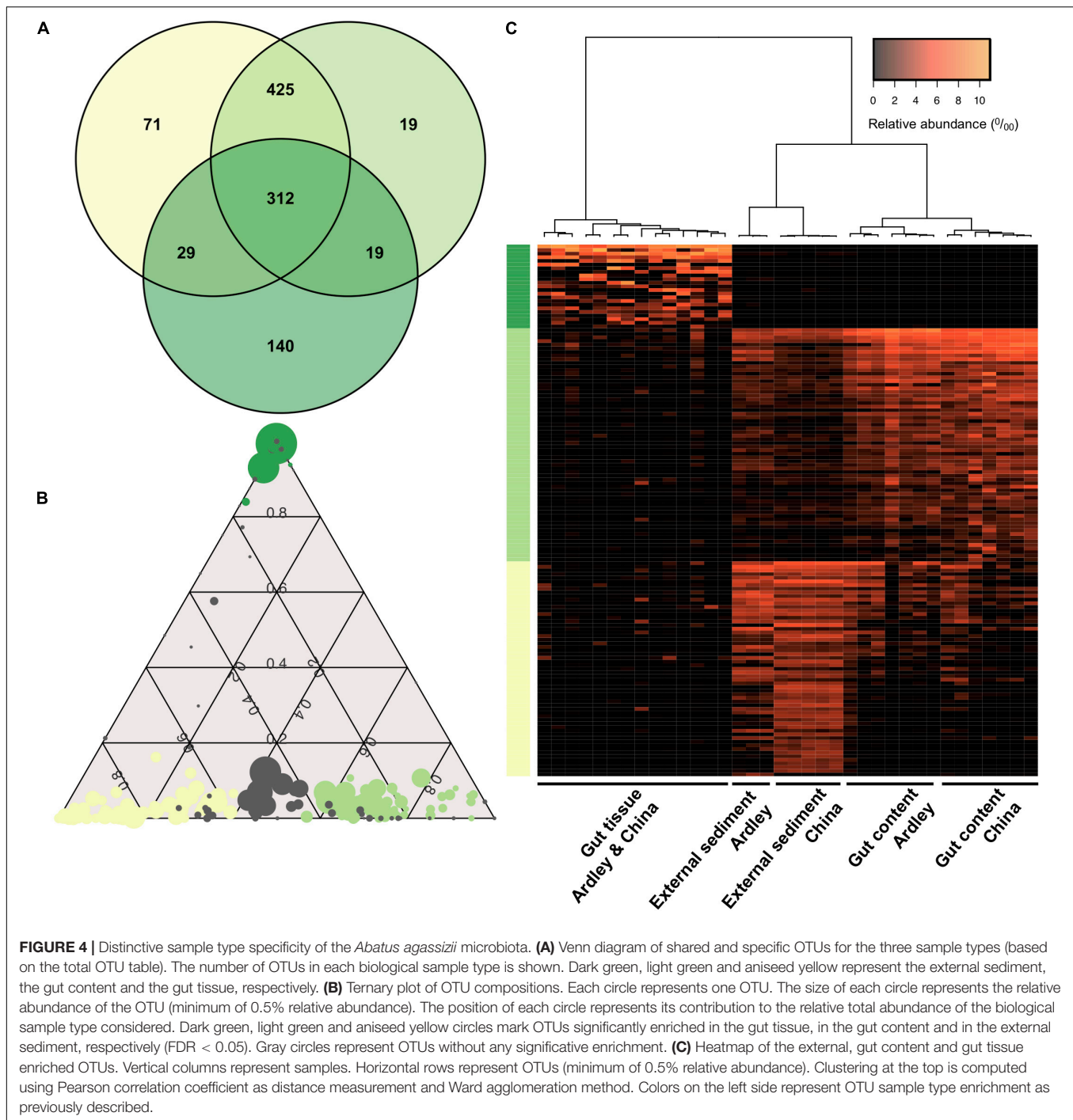
To identify consistent co-occurrence patterns within the microbial communities between the two *A. agassizii* populations and limit the potential noise linked to the site, we focused on shared taxa between Ardley and China sites. We defined a gut core microbiota of the two sites, composed of 136 and 7 OTUs from the gut content and the gut tissue sample types, respectively (Supplementary Figure S4).

Theoretical relationships among the 143 OTUs of the core gut microbiota (i.e., content and tissue) taxa were computed on each site. Both networks harbored comparable characteristics with 357 edges among 72 OTUs, and 350



edges among 71 OTUs for the Ardley and China populations, respectively (Figure 5). More detailed properties provided by NetworkAnalyzer confirmed the similitude in terms of average network centralization (Ardley 0.421, China 0.478), characteristic path length (Ardley 2.199, China 2.137), average number of neighbors (Ardley 9.917, China 9.859), network density (Ardley 0.140, China 0.141) and heterogeneity (Ardley 0.793, China 0.852). In both networks, the predicted interactions were relatively balanced between co-exclusion and co-presence (182 and 157 negative edges vs 175 and 193 positive edges

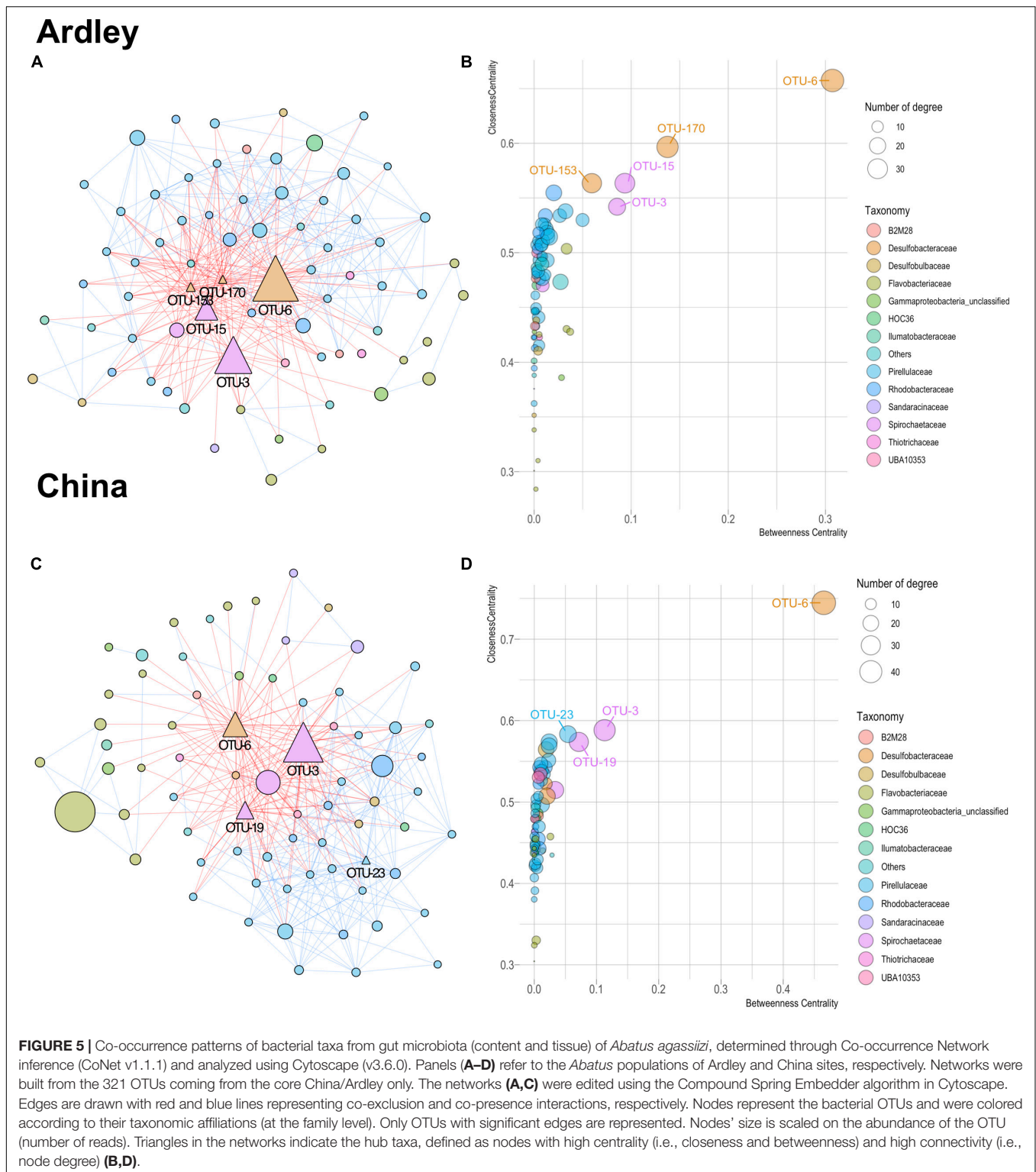
for Ardley and China, respectively), (Figures 5A,C). Based on their closeness centrality, betweenness centrality and the number of associations in the networks, 5 and 4 OTUs were identified as potential “hub taxa” in *A. agassizii* microbiota of Ardley and China, respectively (Figures 5B,D). The hub taxa belonged to the *Spirochaetaceae*, *Desulfobacteraceae*, and *Pirellulaceae* families. All of these hub taxa, apart from the OTU-23, mainly belonged to the gut tissue (Supplementary Figure S3), suggesting that the gut tissue community members are the main drivers of the whole gut microbiota composition.



The same OTU (OTU-6, *Desulfobacteraceae*) was identified in both populations as the most likely hub taxon and harbored exclusively negative relationships with the other nodes (Figures 5A–D).

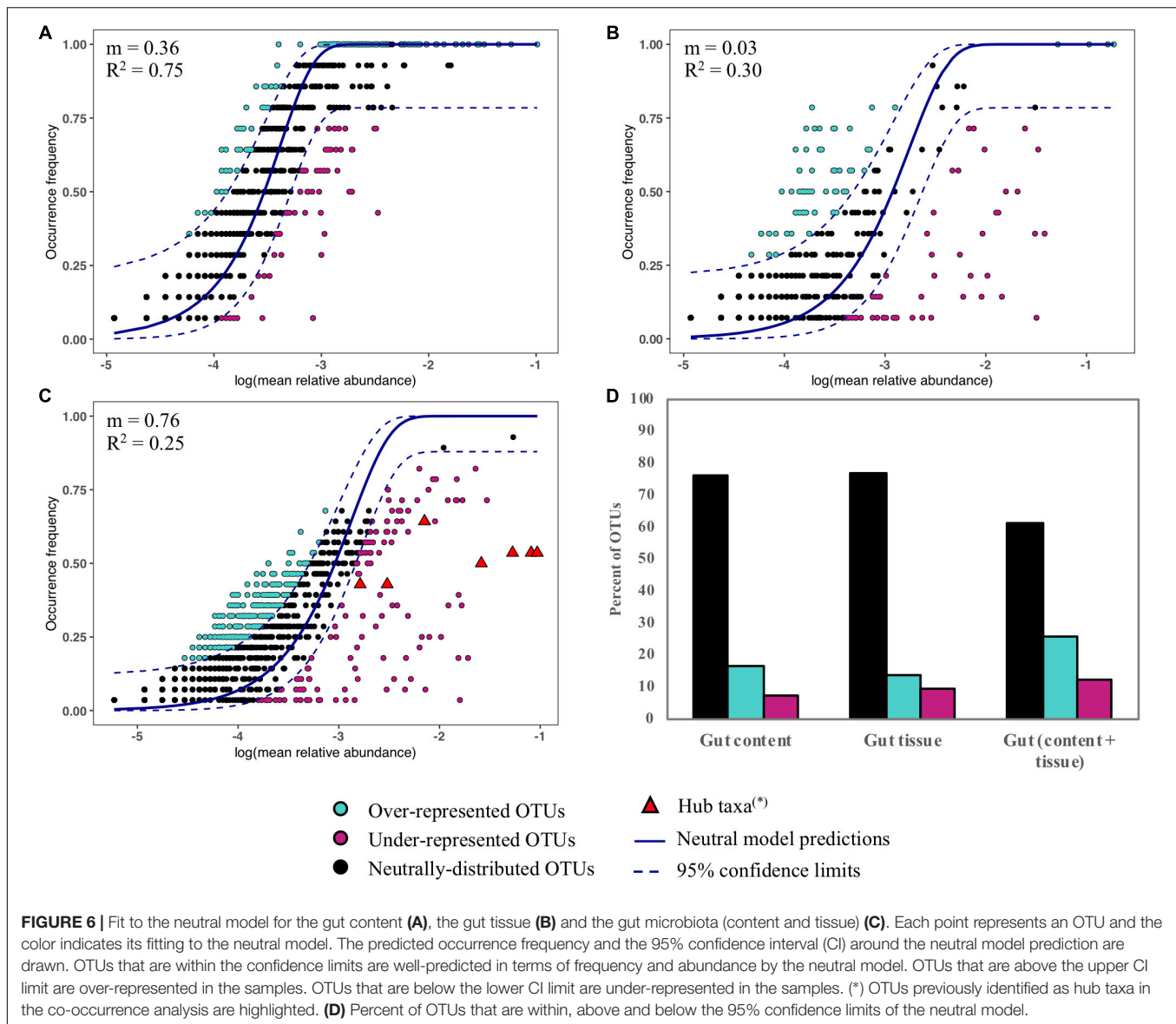
We assessed the contribution of neutral processes in the assembly of *Abatus* gut content, gut tissue and both content and tissue (Figures 6A–C). In all cases, the neutral model outperformed the binomial distribution model, as indicated by the lower AIC values (neutral; −642, −39, −299 vs

binomial; −608, 183, −89, for the gut content, the gut tissue and the gut microbiota, respectively). The frequencies and abundances of 61–84% OTUs were well-predicted by the neutral model indicating that stochastic factors mainly shape the *Abatus* microbiota (Figure 6D). The fit of the neutral model and the migration rate m strongly decreased in the gut tissue ($m = 0.03$, $R^2 = 0.30$) compared to the gut content ($m = 0.36$, $R^2 = 0.75$), suggesting that non-neutral processes such as host selection, microbial interactions



or active dispersal increase as the microbiota is more closely related to the host tissue (Figures 6A,B). Similar OTUs proportions (~23%) of gut content and gut tissue microbiota were above (i.e., over-represented) and below (i.e. under-represented) the predictions of the neutral model (Figure 6D).

This proportion was twice higher (~39%) for gut microbiota OTUs (both content and tissue). The hub taxa previously identified through the co-occurrence analysis deviate from the neutral model predictions (i.e., under-represented) in gut microbiota (Figure 6C).



DISCUSSION

Abatus Sea Urchins Act as a Selective Filter of the Surrounding Environment Microbiota

In this study, we characterized for the first time the gut microbiota of a deposit-feeder irregular sea urchin living in Antarctica through a metabarcoding approach. Contrastingly with the general pattern observed for terrestrial invertebrate microbiota (Ley et al., 2008), *Abatus* gut communities did not cluster with communities from the surrounding environment. Indeed, we found a marked differentiation of the *A. agassizii* microbiota, at the taxonomic level, with divergent bacterial assemblages among the external sediment, the content and the tissue of the digestive tract. These shifts in bacterial beta-diversity were associated with a significant and progressive decrease of

alpha diversity from the external sediment to the gut tissue. These results indicate that the conditions within the *Abatus* host impose successional ecological filters sieving the bacterial diversity of the surrounding sediments and filtering out certain taxa (Stagaman et al., 2017). Analogous differentiation patterns of gut microbiota between gut tissue and digesta have been described in regular sea urchins with a nutrition mode based on a chewing organ (Aristotle's lantern) allowing them to digest algae (Hakim et al., 2016; Hakim et al., 2019), and in corals (Yao et al., 2019). However, given the feeding-mode of *Abatus* sea urchins and the likeness between their feeding material and their gut content, the detection of distinct bacterial community compositions was unexpected between the external sediment and the gut content samples. This result suggests significant modifications of the environmental conditions within the gut, such as the nutrient availability due to the efficiency of absorption by the host cells, the physicochemical properties, the local pH and oxygen content

(Hacquard et al., 2015). Mutualistic, antagonistic and facilitation interactions with other members of the gut microbiota and/or host immune factors may also shape the gut content and the gut tissue bacterial communities differentially (Moran et al., 2019). The transient microbiota, consisting of allochthonous and short-term visitors associated to the gut content, is classically distinguished from the resident microbiota that is supposedly more tightly associated to the host and colonizing the mucosal surface of the gut tissue (Zilber-Rosenberg and Rosenberg, 2008; Hammer et al., 2019). In our results, the most similar bacterial communities were the external sediment and the gut content microbiota, suggesting that the gut content is made of more transient bacteria sourced from the diet. Contrarily, the gut tissue microbiota was the most different from the two other sample types communities, indicating that this community would be resident in *Abatus* gut and more impacted by host-related factors.

In addition to the taxonomic differentiation, our study clearly revealed contrasted functional potentials between the gut content and the gut tissue with differential abundances in various metabolic pathway predictions. Two pathways related to the lysine anabolism and leucine catabolism were significantly over-represented in the *Abatus* gut tissue community. One of the main advantages of hosting a gut microbiota is the improved utilization by the host of suboptimal nutrients (Hammer et al., 2019). This feature has been proposed as particularly important in the case of regular sea urchins that may benefit from the amino acids produced by bacterial metabolism (Lawrence et al., 2013). For instance, Fong and Mann (1980) showed the implication of the gut bacterial community of the sea urchin *Strongylocentrotus droebachiensis* in the synthesis of two amino acids (leucine and lysine) supplied to the host. More recently, Hakim et al. (2016) predicted, using PICRUSt, an elevated metabolism of amino acids in the gut microbiota of the sea urchin *Lytechinus variegatus* in comparison with the surrounding environment. While our over-represented or over-abundant functional predictions were more related to S-related anaerobic redox processes in the gut content, we found a higher occurrence of Krebs cycle predictions in the gut tissue, supporting the idea that in contrast to the content where anoxic conditions prevail, the gut tissue would be locally more oxygenated (Thorsen, 1998).

Different Magnitudes of Microbiota Variability Among Sample Types

The Fildes Peninsula in Antarctica remains today a remote and logistically challenging location with few description of its bacterial microbiota, especially of the shallow marine sediments (Foong et al., 2010; Fan et al., 2013). Here, *Gammaproteobacteria* and *Bacteroidetes* were dominant in the external sediment samples of both sites, thus confirming the previous findings in the literature reporting these classes as the most abundant in marine sediments of the Fildes Peninsula in Antarctica (Foong et al., 2010; Fan et al., 2013). It is also worth emphasizing that, despite the important differences in the protocol used (e.g., genomic DNA extraction, PCR primer, among others), we retrieved various OTUs (including the community-structuring ones) strictly identical to those previously identified in the marine

benthic sediment of the King George Island (Vázquez et al., 2017), thus validating the robustness of our methodology.

Although ten times lower than the sample type effect, we observed a significant contribution of the sampling site on the bacterial community compositions of external sediments and gut contents (Adonis test, $p < 0.005$, **Figure 2**). The two sampling locations were relatively close (<2 km) in the same basin (Fildes bay) and are expected to mostly differ by the water depth (i.e., Ardley 7 m and China 2 m). Water depth is a proxy for several physical and chemical variables in the ocean, such as pH and temperature, among others, and has been described as a driving factor of the benthic microbial community (Zinger et al., 2011; Zhu et al., 2013; Liu et al., 2015). Analogously to Gong et al. (2015) who observed a decrease of the microbial diversity with increasing water depth, a trend of a lower richness was observed on Ardley compared with China sampling site. Unlike external sediment and gut content sample types, there was no significant site-effect on the gut tissue communities between individuals from Ardley and China sites, supporting the constraining effect of the host factors on the environmental bacterial diversity. Unexpectedly, the variability within gut tissue samples was nearly twice of that within external sediment samples. The host genotype (e.g. immunity) may shape the gut microbial composition by modifying the abundance of specific taxa, overwhelming the idiosyncratic variations linked to the site and leading to the individualization of the microbiota within a same species as observed in other vertebrate and invertebrate models (Benson et al., 2010; Stagaman et al., 2017; Ravenscraft et al., 2019). Furthermore, despite the cautious homogenization procedure aforementioned, we cannot discard the hypothesis that the higher variability among the gut tissue samples might be an artifact of the microbiota spatial partition along the digestive tract. Thorsen (1998) previously reported contrasting values of pH, oxygen and sulfates in distinct regions of the digestive tract of the deposit-feeder *Echinocardium cordatum*. Given the similitudes of the gut (i.e., structure and size) and the sediment-dweller behavior of *Echinocardium* and *Abatus* (Ziegler, 2014), it is reasonable to assume that *Abatus* may also harbor distinct metabolic activities and physicochemical properties according to the gut region, leading to the subsequent partition of its microbiota. Future research on the *Abatus* gut microbiota should consider and evaluate the differentiation of the gut microbiota along the digestive tract.

Composition Specificity of the Abatus Microbiota

The taxonomic composition of *A. agassizii* gut content microbiotasubstantially diverged from those previously reported in regular urchin species, where *Fusobacteriia* and *Proteobacteria* were dominant (Becker et al., 2009; Yao et al., 2019). The difference of the diet (i.e., mainly grazers and scrapers versus deposit-feeders) may be very likely involved, since it is known to mainly shape the sea urchin gut microbiota (Yao et al., 2019), as most other host-microbiota. In contrast with González-Aravena et al. (2016) who found the microbiota composition of the regular Antarctic sea-urchin *Sterechinus neumayerii* dominated

by *Alphaproteobacteria* and *Flavobacteria* and relatively similar to the seawater's one, we noticed a shift in the dominant class of the gut content microbiota of *A. agassizii* with a marked enrichment in *Planctomycetacia* mostly represented by the *Blastopirellula* genus (20% of the Planctomycetes sequences). The *Planctomycetes* phylum (including the *Planctomycetacia*) has been observed at various abundances in several marine microbiotas, such as sponges (Taylor et al., 2013; Rodriguez-Marconi et al., 2015), tubeworms (Medina-Silva et al., 2018), jellyfish (Lee et al., 2018), macroalgae (Bengtsson and Øvreås, 2010) and regular sea urchins (Hakim et al., 2016). However, such a predominance has never been reported so far in marine invertebrates. Accumulating evidences suggest that *Planctomycetacia* belonging to the *Rhodopirellula-Pirellula-Blastopirellula* clade could play a major role in the degradation of sulfated polymeric carbon through sulfatase enzyme activity (Glöckner et al., 2003; Wegner et al., 2013), notably under anaerobic conditions (Elshahed et al., 2007), and in interaction with marine macro-organisms (Hempel et al., 2008; Bengtsson and Øvreås, 2010; Medina-Silva et al., 2018). Therefore, a reasonable explanation for the enrichment of *Planctomycetacia* in the *Abatus* gut content would be its high concentration in sulfated compounds coupled with a low oxygenation rate, conditions that are known to occur in other irregular sea urchins (Plante and Jumars, 1992; Thorsen, 1998). These sulphated compounds, found in marine photosynthetic organisms like microalgae and seaweeds (Bengtsson and Øvreås, 2010), may be deposited on the seafloor at organisms' death and ingested by the *Abatus* host together with the sediment. Intestinal secretions from the echinoid host itself are also a substantial source of sulphated mucopolysaccharides (Da Silva et al., 2006). Consistently, we predicted through PICRUST an elevated sulfur metabolism in the *Abatus* gut content (i.e., sulfur oxidation and sulfate reduction) probably explained to some extent by the *Planctomycetacia* enrichment. An active metabolism of sulfur has been suggested in *E. cordatum* gut, supported by the substantial sulfate and sulfide concentrations resulting from sulfatase enzymes and sulfate-reducing bacteria activity (Thorsen, 1998; Thorsen et al., 2003).

Spirochaeta and Desulfobacula: Keystones of the Abatus Microbiota

We defined a core gut microbiota was defined for gut contents and gut tissues between the two populations of *A. agassizii* (China and Ardley sites). Given the expected tight interactions between transient and resident microbial communities, we explored the relationships among taxa between the gut content and the gut tissue, according to their significant patterns of co-occurrence and co-exclusion (Faust et al., 2012). Based on their high connectivity in the network of each site, OTUs from two families, *Spirochaetaceae* and *Desulfobacteraceae*, were identified as hub taxa of *A. agassizii* gut microbiota and could be potential keystones occupying a crucial functional role in the host physiology (Berry and Widder, 2014; Banerjee et al., 2018).

The gut tissue of *A. agassizii* was dominated by *Spirochaetia*, mostly represented by the genus *Spirochaeta* which was prevalent in all of the samples and accounted for as much as 80%

relative abundance of the class. *Spirochaetes* are motile free-living, facultative/obligate anaerobes (Leschine et al., 2006), associated with numerous marine invertebrates, among others, corals (Lawler et al., 2016; Van De Water et al., 2016), sponges (Matcher et al., 2017; Kellogg, 2019), sea stars (Jackson et al., 2018), and at the body surface of the regular sea urchin species *Tripneustes gratilla* (<15% relative abundance) (Brink et al., 2019). Such a prevalence inside the gut of a sea urchin has never been described and suggests a specific interaction between *Spirochaeta* and the *Abatus* host. Interestingly, nitrogen fixation activity was reported in several free-living strains of *Spirochaeta*. Further, the *nifH* gene of these strains was phylogenetically close to the *nifH* sequences of clones encountered in Antarctica (Lilburn et al., 2001). Moreover, Guerinot and Patriquin (1981) reported bacterial nitrogen fixation activity in several regular sea urchin species from temperate, tropical and arctic seas. Thus, it is tempting to expect a spirochete-specific N₂ fixation metabolism inside the gut that might benefit *A. agassizii* by increasing its nitrogen supply in a context of low-nitrogen food. Direct quantification of the functional gene *nifH* or nitrogenase activity measurement performed on the gut could confirm this N₂ fixation metabolism in the future.

Remarkably, the keystone top candidate of the two *Abatus* populations was the very same OTU from *Desulfobacteraceae* (OTU-6 close to the *Desulfobacula* genus). Taxa belonging to the *Desulfobacteraceae* family have been previously identified in the literature as potential keystone in other regular (Meziti et al., 2007; Hakim et al., 2016; Hakim et al., 2019) and irregular sea urchin species (Thorsen et al., 2003; Da Silva et al., 2006). The *Desulfobacteraceae* family members (including *Desulfobacula*) are sulfate-reducers known to be quantitatively important in the anaerobic degradation of organic matter in coastal marine sediments (Jørgensen, 1982; Bowles et al., 2014). Thus, their prevalence and enrichment in the gut could be directly linked to the deposit-feeding mode of *A. agassizii*. Furthermore, these sulfate-reducing bacteria hosted on the *Abatus* gut tissue may take advantage of the sulfate enrichment in the lumen, that derive from the fermentative degradation of complex sulphated polysaccharides achieved by the gut content microbiota (see the previous section) (Thorsen et al., 2003; Da Silva et al., 2006). In return, the host may benefit from the bacterial exudation and from the bacterial degradation of the recalcitrant organic compounds present in the sediment. Likewise, some strains would also be able to directly contribute to the anaerobic degradation of complex aromatic compounds, as previously documented in the *Desulfobacula* genus (Raber et al., 1998; Kim et al., 2014).

The reduction of sulfated substrates is ineluctably associated with the accumulation of sulfides potentially toxic for both host and microbiota (De Ridder et al., 1985; Vismann, 1991; Thorsen et al., 2003). The sulfide toxicity could explain that all interactions implying the OTU-6 with the other core taxa were co-exclusions, at the exception of *Spirochaeta* keystone OTUs. Previous studies have described several *Spirochaeta* strains as resistant to classically deleterious sulfide concentrations and also able to oxidize sulfides under aerobic conditions, as the ones present at the proximity of the host intestinal tissue (Hoover

et al., 2003; Dubinina et al., 2011; Miyazaki et al., 2014). Thus, *Spirochaeta* may endorse the role of detoxifiers in the *Abatus* gut preventing the sulfide accumulation by oxidizing it into elemental sulfur. The syntrophic relationship between sulfide oxidizers and sulfate reducers has been described accordingly in sediment-dweller gutless worms (Blazejak et al., 2005), and aggregation of *Desulfonema* (genus of *Desulfobacteraceae*) and *Spirochaeta* has been observed in culture (Da Silva et al., 2006).

Abatus Sea Urchins Have a Unique Resident Microbiota

The application of a neutral model to *A. agassizii* microbiota data has laid the first stones into the comprehension of keystone taxa assembly in the gut of *Abatus*. We showed that the gut tissue microbiota fits less to the neutral model than the gut content microbiota, thus indicating that the gut tissue microbiota would be less influenced by stochastic factors (i.e., ecological drift and passive dispersal) than the gut content community. This result underlines the fact that, the tighter the association between the microbiota and *Abatus* gut tissue is, the stronger deterministic factors (e.g., host factors) may shape the gut bacterial taxa abundance and frequency. As the acquisition of mutualistic bacteria by marine invertebrates generally occur horizontally (Nyholm and McFall-Ngai, 2004; Dubilier et al., 2008), the most parsimonious mechanism would be a constant inoculation from the bulk environment through the sediment swallowing (i.e., horizontal acquisition), carrying opportunistic bacteria that fit the very selective conditions of *Abatus* gut tissue. Alternatively, the sea urchins may also acquire their microbiome from the environment at some early point in their development, though as the gut develops, it creates a highly selective environment (Thorsen, 1998) that enriches in these microbes and paves the way to the remarkable difference observed in the gut microbial community compared to the sediment (external and contained in the gut). A recent study identified both horizontal and vertical acquisition mechanisms as explaining factors of the symbiont genetic diversity in the brooding coral species *Seriatopora hystrix* (Quigley et al., 2018). In the case of brooding sea urchin species like *A. agassizii*, the inheritance by the juveniles of a part adult microbiota and the mechanisms responsible to the keystone assembly on the gut tissue, remains to be further investigated.

Interestingly, the inspection of the neutral model fit for gut microbiota revealed that the keystone taxa previously identified as prevalent, substantially enriched, and important in the gut microbiota structure, were also markedly deviated from the predictions of a neutral model. The under-representation pattern observed suggests that these taxa would be to some extent either actively selected against the host or especially dispersal limited (Burns et al., 2016), supporting our rationale that these keystone taxa are well adapted to the gut tissue and are somehow actively driven by the *Abatus* host (Adair et al., 2018). Thus, the keystone taxa assembly in the gut tissue may be the result of an integration by the host, which actively promotes mutualistic bacteria by producing bioactive metabolites (Dubilier et al., 2008; Mangano et al., 2009). Overall, it might be advantageous for the host to maintain stable, functional

associations with taxa from its gut microbial community as long as they confer fitness benefits (e.g., improved nutrition in the oligotrophic environment, gut detoxification, among others) (Giudice et al., 2019). A possible syntrophy between *Spirochaeta* and *Desulfobacula* genera, contributing to the organic matter digestion, the N supply, the S cycling and the gut detoxification of *Abatus*, could be actively selected and maintained across *Abatus* individuals and populations.

CONCLUSION

In summary, this case study provides a comprehensive description of the microbiota of *A. agassizii*, through its taxonomic composition and predicted metabolic role. We highlighted specific enrichment in bacterial taxa and putative associated functions between the content and the tissue of the gut, congruent with the sediment-dwelling ecology of the host. We revealed the existence of a core microbiota shared between distinct *A. agassizii* populations in King George Island, Antarctica, and we demonstrated its consistency at a local scale with a structuration around two main keystone bacterial taxa that may have a relevant biological role in the host fitness. Our results also suggest a putative active and host-mediated selection of these gut adherent keystones, that represent promising targets for future interspecific studies of the gut microbiota among the *Abatus* genus species. Altogether, these results highly suggest that despite its relative elementary feeding behavior, *Abatus agassizii* may rely on a selective and unique resident microbiota to survive in the marine benthic sediment.

DATA AVAILABILITY STATEMENT

The datasets generated for this study can be found in the National Center for Biotechnology Information (NCBI) repository, under the accession number PRJNA590493.

AUTHOR CONTRIBUTIONS

LC, JO, and EP designed the research. LC and EP performed the sampling and the fieldwork. GS conducted all the laboratory experiments, managed data mining and all analysis, and wrote the manuscript draft. GS, LC, JO, and EP interpreted the data. All authors edited and approved the manuscript.

FUNDING

This work was financially supported by the projects CONICYT PIA ACT 172065, ECOS SUD-CONICYT C16B03, and INACH-RT09-12.

ACKNOWLEDGMENTS

The authors would like to thank the INACH personnel at Escudero Antarctic Research Station for logistic facilities,

particularly base chief Elias Barticevic. The authors also thank Paulina Bruning and Ignacio Garrido of the IDEAL centre for their help in *Abatus* sampling. Feedback from two the reviewers greatly improved this manuscript. This paper contributes to the SCAR Ant-ERA and Ant-Eco programs.

REFERENCES

- Adair, K. L., Wilson, M., Bost, A., and Douglas, A. E. (2018). Microbial community assembly in wild populations of the fruit fly *Drosophila melanogaster*. *ISME J.* 12, 959–972. doi: 10.1038/s41396-017-0020-x
- Agler, M. T., Ruhe, J., Kroll, S., Morhenn, C., Kim, S. T., Weigel, D., et al. (2016). Microbial hub taxa link host and abiotic factors to plant microbiome variation. *PLoS Biol.* 14:e1002352. doi: 10.1371/journal.pbio.1002352
- Banerjee, S., Schlaeppi, K., and Van Der Heijden, M. G. A. (2018). Keystone taxa as drivers of microbiome structure and functioning. *Nat. Rev. Microbiol.* 16, 567–576. doi: 10.1038/s41579-018-0024-1
- Becker, P. T., Samadi, S., Zbinden, M., Hoyoux, C., Compère, P., and De Ridder, C. (2009). First insights into the gut microflora associated with an echinoid from wood falls environments. *Cahiers Biol. Mar.* 50:343.
- Bengtsson, M. M., and Øvreås, L. (2010). Planctomycetes dominate biofilms on surfaces of the kelp *Laminaria hyperborea*. *BMC Microbiol.* 10:261. doi: 10.1186/1471-2180-10-261
- Benson, A. K., Kelly, S. A., Legge, R., Ma, F., Low, S. J., Kim, J., et al. (2010). Individuality in gut microbiota composition is a complex polygenic trait shaped by multiple environmental and host genetic factors. *Proc. Natl. Acad. Sci. U.S.A.* 107, 18933–18938. doi: 10.1073/pnas.1007028107
- Berry, D., and Widder, S. (2014). Deciphering microbial interactions and detecting keystone species with co-occurrence networks. *Front. Microbiol.* 5:219. doi: 10.3389/fmicb.2014.00219
- Blazejak, A., Erseus, C., Amann, R., and Dubilier, N. (2005). Coexistence of bacterial sulfide oxidizers, sulfate reducers, and spirochetes in a gutless worm (*Oligochaeta*) from the Peru margin. *Appl. Environ. Microbiol.* 71, 1553–1561. doi: 10.1128/aem.71.3.1553-1561.2005
- Bokulich, N. A., Subramanian, S., Faith, J. J., Gevers, D., Gordon, J. I., Knight, R., et al. (2013). Quality-filtering vastly improves diversity estimates from Illumina amplicon sequencing. *Nat. Methods* 10, 57–59. doi: 10.1038/nmeth.2276
- Bowles, M. W., Mogollón, J. M., Kasten, S., Zabel, M., and Hinrichs, K.-U. (2014). Global rates of marine sulfate reduction and implications for sub-sea-floor metabolic activities. *Science* 344, 889–891. doi: 10.1126/science.1249213
- Brigmon, R. L., and De Ridder, C. (1998). Symbiotic relationship of *Thiothrix* spp. with an echinoderm. *Appl. Environ. Microbiol.* 64, 3491–3495. doi: 10.1128/aem.64.9.3491-3495.1998
- Brink, M., Rhode, C., Macey, B., Christison, K., and Roodt-Wilding, R. (2019). Metagenomic assessment of body surface bacterial communities of the sea urchin, *Tripneustes gratilla*. *Mar. Genomics* 47:100675. doi: 10.1016/j.margen.2019.03.010
- Brothers, C. J., Van Der Pol, W. J., Morrow, C. D., Hakim, J. A., Koo, H., and McClintock, J. B. (2018). Ocean warming alters predicted microbiome functionality in a common sea urchin. *Proc. Biol. Sci.* 285, 20180340. doi: 10.1098/rspb.2018.0340
- Brown, M. B. (1975). 400: a method for combining non-independent, one-sided tests of significance. *Biometrics* 32, 987–992.
- Bulgarelli, D., Rott, M., Schlaeppi, K., Ver Loren, Van Themaat, E., Ahmadinejad, N., et al. (2012). Revealing structure and assembly cues for *Arabidopsis* root-inhabiting bacterial microbiota. *Nature* 488, 91–95. doi: 10.1038/nature11336
- Burns, A. R., Stephens, W. Z., Stagaman, K., Wong, S., Rawls, J. F., Guillemin, K., et al. (2016). Contribution of neutral processes to the assembly of gut microbial communities in the zebrafish over host development. *ISME J.* 10, 655–664. doi: 10.1038/ismej.2015.142
- Choma, M., Barta, J., Santruckova, H., and Urich, T. (2016). Low abundance of Archaeorhizomycetes among fungi in soil metatranscriptomes. *Sci. Rep.* 6:38455. doi: 10.1038/srep38455
- Da Silva, S. G., Gillan, D. C., Dubilier, N., and De Ridder, C. (2006). Characterization by 16S rRNA gene analysis and in situ hybridization of bacteria living in the hindgut of a deposit-feeding echinoid (*Echinodermata*). *J. Mar. Biol. Assoc.* 86, 1209–1213. doi: 10.1017/s0025315406014202
- David, B., Choné, T., Mooi, R., and De Ridder, C. (2005). *Antarctic Echinoidea. Synopses of the Antarctic Benthos*. Lichtenstein: ARG Gantner.
- De Ridder, C., and Brigmon, R. L. (2003). “Farming” of microbial mats in the hindgut of echinoids,” in *Fossil and Recent Biofilms*, eds W. E. Krumbein, D. M. Paterson, and G. A. Zavarzin (Dordrecht: Kluwer Academic Publishers), 217–225.
- De Ridder, C., Jangoux, M., and De Vos, L. (1985). Description and significance of a peculiar intradigestive symbiosis between bacteria and a deposit-feeding echinoid. *J. Exp. Mar. Biol. Ecol.* 91, 65–76. doi: 10.1016/0022-0981(85)90221-7
- De Ridder, C., Jangoux, M., and De Vos, L. (1987). Frontal ambulacral and peribuccal areas of the spatangoid echinoid *Echinocardium cordatum* (*Echinodermata*): a functional entity in feeding mechanism. *Mar. Biol.* 94, 613–624. doi: 10.1007/bf00431408
- De Ridder, C., Jangoux, M., Lawrence, J., Jangoux, M., and Lawrence, J. M. (1982). “Food and feeding mechanisms: Echinoidea,” in *Echinoderm nutrition*, (Rotterdam: Balkema), 57–115.
- Díaz, A., González-Wevar, C. A., Maturana, C. S., Palma, A. T., Poulin, E., and Gerard, K. (2012). Restricted geographic distribution and low genetic diversity of the brooding sea urchin *Abatus agassizii* (*Spatangoidea: Schizasteridae*) in the South Shetland Islands: a bridgehead population before the spread to the northern antarctic peninsula? *Rev. Chil. Hist. Nat.* 85, 457–468. doi: 10.4067/s0716-078x2012000400008
- Douglas, G. M., Maffei, V. J., Zaneveld, J., Yurgel, S. N., Brown, J. R., Taylor, C. M., et al. (2019). PICRUST2: an improved and extensible approach for metagenome inference. *bixRxiv* [Preprint]. doi: 10.1101/672295
- Dubilier, N., Bergin, C., and Lott, C. (2008). Symbiotic diversity in marine animals: the art of harnessing chemosynthesis. *Nat. Rev. Microbiol.* 6:725. doi: 10.1038/nrmicro1992
- Dubinina, G., Grabovich, M., Leshcheva, N., Rainey, F. A., and Gavrilish, E. (2011). *Spirochaeta perfluvii* sp. nov., an oxygen-tolerant, sulfide-oxidizing, sulfur- and thiosulfate-reducing spirochaete isolated from a saline spring. *Int. J. Syst. Evol. Microbiol.* 61, 110–117. doi: 10.1099/ijs.0.018333-0
- Dunn, O. J. (1961). Multiple comparisons among means. *J. Am. Stat. Assoc.* 56, 52–64.
- Edgar, R. C., Haas, B. J., Clemente, J. C., Quince, C., and Knight, R. (2011). UCHIME improves sensitivity and speed of chimera detection. *Bioinformatics* 27, 2194–2200. doi: 10.1093/bioinformatics/btr381
- Elshahed, M. S., Youssef, N. H., Luo, Q., Najjar, F. Z., Roe, B. A., Sisk, T. M., et al. (2007). Phylogenetic and metabolic diversity of planctomycetes from anaerobic, sulfide- and sulfur-rich zodletone spring, oklahoma. *Appl. Environ. Microbiol.* 73, 4707–4716. doi: 10.1128/aem.00591-07
- Fan, J., Li, L., Han, J., Ming, H., Li, J., Na, G., et al. (2013). Diversity and structure of bacterial communities in fildes peninsula. *King George Island. Polar Biol.* 36, 1385–1399. doi: 10.1007/s00300-013-1358-9
- Faust, K., and Raes, J. (2016). CoNet app: inference of biological association networks using Cytoscape. *F1000Res.* 5:1519. doi: 10.12688/f1000research.9050.2
- Faust, K., Sathirapongsasuti, J. F., Izard, J., Segata, N., Gevers, D., Raes, J., et al. (2012). Microbial co-occurrence relationships in the human microbiome. *PLoS Comput. Biol.* 8:e1002606. doi: 10.1371/journal.pcbi.1002606
- Fong, W., and Mann, K. (1980). Role of gut flora in the transfer of amino acids through a marine food chain. *Can. J. Fish. Aquat. Sci.* 37, 88–96. doi: 10.1139/f80-009
- Foong, C. P., Wong Vui, Ling, C. M., and González, M. (2010). Metagenomic analyses of the dominant bacterial community in the fildes peninsula, king

SUPPLEMENTARY MATERIAL

The Supplementary Material for this article can be found online at: <https://www.frontiersin.org/articles/10.3389/fmicb.2020.00308/full#supplementary-material>

- george Island (South Shetland Islands). *Polar Sci.* 4, 263–273. doi: 10.1016/j.polar.2010.05.010
- Ghiold, J. (1989). Species distributions of irregular echinoids. *Biol. Oceanogr.* 6, 79–162.
- Gil, D. G., Zaixso, H. E., and Tolosano, J. A. (2009). Brooding of the sub-Antarctic heart urchin, *Abatus cavernosus* (Spatangoida: Schizasteridae), in southern Patagonia. *Mar. Biol.* 156, 1647–1657. doi: 10.1007/s00227-009-1200-7
- Giudice, A. L., Azzaro, M., and Schiaparelli, S. (2019). “Microbial symbionts of antarctic marine benthic invertebrates,” in *The Ecological Role of Microorganisms in the Antarctic Environment*, ed. S. Castro-Sowinski, (Berlin: Springer), 277–296. doi: 10.1007/978-3-030-02786-5_13
- Glöckner, F. O., Kube, M., Bauer, M., Teeling, H., Lombardot, T., Ludwig, W., et al. (2003). Complete genome sequence of the marine planctomycete *Pirellula* sp. strain 1. *Proc. Natl. Acad. Sci. U.S.A.* 100, 8298–8303.
- Gong, J., Shi, F., Ma, B., Dong, J., Pachiadaki, M., Zhang, X., et al. (2015). Depth shapes alpha- and beta-diversities of microbial eukaryotes in surficial sediments of coastal ecosystems. *Environ. Microbiol.* 17, 3722–3737. doi: 10.1111/1462-2920.12763
- González-Aravena, M., Urtubia, R., Del Campo, K., Lavín, P., Wong, C., Cárdenas, C., et al. (2016). Antibiotic and metal resistance of cultivable bacteria in the Antarctic sea urchin. *Antarct. Sci.* 28, 261–268. doi: 10.1017/s0954102016000109
- Guerinot, M., and Patriquin, D. (1981). N₂-fixing vibrios isolated from the gastrointestinal tract of sea urchins. *Can. J. Microbiol.* 27, 311–317. doi: 10.1139/m81-048
- Guillaumot, C., Fabri–Ruiz, S., Martin, A., Eléaume, M., Danis, B., Féral, J. P., et al. (2018). Benthic species of the kerguelen plateau show contrasting distribution shifts in response to environmental changes. *Ecol. Evol.* 8, 6210–6225. doi: 10.1002/ece3.4091
- Hacquard, S., Garrido-Oter, R., Gonzalez, A., Spaepen, S., Ackermann, G., Lebeis, S., et al. (2015). Microbiota and host nutrition across plant and animal kingdoms. *Cell Host Microbe* 17, 603–616. doi: 10.1016/j.chom.2015.04.009
- Hakim, J. A., Koo, H., Kumar, R., Lefkowitz, E. J., Morrow, C. D., Powell, M. L., et al. (2016). The gut microbiome of the sea urchin, *Lytechinus variegatus*, from its natural habitat demonstrates selective attributes of microbial taxa and predictive metabolic profiles. *FEMS Microbiol. Ecol.* 92, fiw146. doi: 10.1093/femsec/fiw146
- Hakim, J. A., Schram, J. B., Galloway, A. W. E., Morrow, C. D., Crowley, M. R., Watts, S. A., et al. (2019). The purple sea urchin *Strongylocentrotus purpuratus* demonstrates a compartmentalization of gut bacterial microbiota, predictive functional attributes, and taxonomic co-occurrence. *Microorganisms* 7:E35. doi: 10.3390/microorganisms7020035
- Hammer, T. J., Sanders, J. G., and Fierer, N. (2019). Not all animals need a microbiome. *FEMS Microbiol. Lett.* 366:fnz117. doi: 10.1093/femsl/fnz117
- Hempel, M., Blume, M., Blindow, I., and Gross, E. M. (2008). Epiphytic bacterial community composition on two common submerged macrophytes in brackish water and freshwater. *BMC Microbiol.* 8:58. doi: 10.1186/1471-2180-8-58
- Hollertz, K., and Duchêne, J.-C. (2001). Burrowing behaviour and sediment reworking in the heart urchin *Brissopsis lyrifera* Forbes (Spatangoida). *Mar. Biol.* 139, 951–957. doi: 10.1007/s002270100629
- Hoover, R. B., Pikuta, E. V., Bej, A. K., Marsic, D., Whitman, W. B., Tang, J., et al. (2003). *Spirochaeta americana* sp. nov., a new haloalkaliphilic, obligately anaerobic spirochaete isolated from soda mono lake in California. *Int. J. Syst. Evol. Microbiol.* 53, 815–821. doi: 10.1099/ijs.0.02535-0
- Jackson, E. W., Pepe-Ranney, C., Debenport, S. J., Buckley, D. H., and Hewson, I. (2018). The microbial landscape of sea stars and the anatomical and interspecies variability of their microbiome. *Front. Microbiol.* 9:1829. doi: 10.3389/fmicb.2018.01829
- Jørgensen, B. B. (1982). Mineralization of organic matter in the sea bed—the role of sulphate reduction. *Nature* 296:643. doi: 10.1038/296643a0
- Kellogg, C. A. (2019). Microbiomes of stony and soft deep-sea corals share rare core bacteria. *Microbiome* 7:90. doi: 10.1186/s40168-019-0697-3
- Kim, S.-J., Park, S.-J., Jung, M.-Y., Kim, J.-G., Min, U.-G., Hong, H.-J., et al. (2014). *Draft Genome Sequence of an Aromatic Compound-Degrading Bacterium, Desulfobacula* sp. TS, Belonging to the Deltaproteobacteria. Oxford: Blackwell Publishing Ltd.
- Latreille, P. A. (1825). *Familles Naturelles du Règne Animal: Exposées Succinctement et dans un Ordre Analytique, Avec l'indication de Leurs Genres*. Paris: JB Baillière.
- Lasker, R., and Giese, A. C. (1954). Nutrition of the sea urchin. *Strongylocentrotus purpuratus*. *Biol. Bull.* 106, 328–340. doi: 10.2307/1538767
- Lawler, S. N., Kellogg, C. A., France, S. C., Clostio, R. W., Brooke, S. D., and Ross, S. W. (2016). Coral-associated bacterial diversity is conserved across two deep-sea anothela species. *Front. Microbiol.* 7:458. doi: 10.3389/fmicb.2016.00458
- Lawrence, J. M., Lawrence, A. L., and Watts, S. A. (2013). “Feeding, Digestion and Digestibility of Sea Urchins,” in *Sea Urchins: Biology and Ecology*, 3rd Edn, ed. J. Lawrence, (Amsterdam: Elsevier BV), 135–154. doi: 10.1016/b978-0-12-396491-5.00009-5
- Lawrence, J. M., McClintock, J. B., and Guille, A. (1984). Organic level and caloric content of eggs of brooding asteroids and an echinoid (*Echinodermata*) from Kerguelen (South Indian Ocean). *Invertebr. Reprod. Dev.* 7, 249–257. doi: 10.1080/01688170.1984.10510097
- Ledoux, J.-B., Tarnowska, K., Gérard, K., Lhuillier, E., Jacquemin, B., Weydmann, A., et al. (2012). Fine-scale spatial genetic structure in the brooding sea urchin *Abatus cordatus* suggests vulnerability of the Southern Ocean marine invertebrates facing global change. *Polar Biol.* 35, 611–623. doi: 10.1007/s00300-011-1106-y
- Lee, M. D., Kling, J. D., Araya, R., and Ceh, J. (2018). Jellyfish life stages shape associated microbial communities, while a core microbiome is maintained across all. *Front. Microbiol.* 9:1534. doi: 10.3389/fmicb.2018.01534
- Leschine, S., Paster, B. J., and Canale-Parola, E. (2006). “Free-living saccharolytic spirochetes: the genus spiochaeta,” in *The Prokaryotes*, 3rd Edn, Vol. 7, eds M. Dworkin, S. Falkow, E. Rosenberg, K.-H. Schleifer, and E. Stackebrandt, (New York, NY: Springer), 195–210. doi: 10.1007/0-387-30747-8_7
- Ley, R. E., Lozupone, C. A., Hamady, M., Knight, R., and Gordon, J. I. (2008). Worlds within worlds: evolution of the vertebrate gut microbiota. *Nat. Rev. Microbiol.* 6:776. doi: 10.1038/nrmicro1978
- Lilburn, T., Kim, K., Ostrom, N., Byzek, K., Leadbetter, J., and Breznak, J. (2001). Nitrogen fixation by symbiotic and free-living spirochetes. *Science* 292, 2495–2498. doi: 10.1126/science.1060281
- Littlewood, D. T., and Smith, A. B. (1995). A combined morphological and molecular phylogeny for sea urchins (*Echinoidea: Echinodermata*). *Philos. Trans. R. Soc. Lond. B Biol. Sci.* 347, 213–234. doi: 10.1098/rstb.1995.0023
- Liu, J., Liu, X., Wang, M., Qiao, Y., Zheng, Y., and Zhang, X. H. (2015). Bacterial and archaeal communities in sediments of the north Chinese marginal seas. *Microb. Ecol.* 70, 105–117. doi: 10.1007/s00248-014-0553-8
- Lohrer, A. M., Thrush, S. F., Hunt, L., Hancock, N., and Lundquist, C. (2005). Rapid reworking of subtidal sediments by burrowing spatangoid urchins. *J. Exp. Mar. Biol. Ecol.* 321, 155–169. doi: 10.1016/j.jembe.2005.02.002
- Magniez, P. (1983). Reproductive cycle of the brooding echinoid *Abatus cordatus* (Echinodermata) in Kerguelen (Antarctic Ocean): changes in the organ indices, biochemical composition and caloric content of the gonads. *Mar. Biol.* 74, 55–64. doi: 10.1007/bf00394275
- Mangano, S., Michaud, L., Caruso, C., Brilli, M., Bruni, V., Fani, R., et al. (2009). Antagonistic interactions between psychrotrophic cultivable bacteria isolated from Antarctic sponges: a preliminary analysis. *Res. Microbiol.* 160, 27–37. doi: 10.1016/j.resmic.2008.09.013
- Martinez Arbizu, P. (2017). *pairwiseAdonis: Pairwise Multilevel Comparison Using adonis. R package Version 1.*
- Matcher, G. F., Waterworth, S. C., Walmsley, T. A., Matsatsa, T., Parker-Nance, S., Davies-Coleman, M. T., et al. (2017). Keeping it in the family: coevolution of latrunculiid sponges and their dominant bacterial symbionts. *Microbiol. Open* 6:e00417. doi: 10.1002/mbo3.417
- Maturana, C. S., Gerard, K., Diaz, A., David, B., Feral, J.-P., and Poulin, E. (2017). Mating system and evidence of multiple paternity in the Antarctic brooding sea urchin *Abatus agassizii*. *Polar Biol.* 40, 787–797. doi: 10.1007/s00300-016-2001-3
- Medina-Silva, R., Oliveira, R. R., Trindade, F. J., Borges, L. G. A., Lopes Simao, T. L., Augustin, A. H., et al. (2018). Microbiota associated with tubes of *Escarpi* sp.

- from cold seeps in the southwestern Atlantic Ocean constitutes a community distinct from that of surrounding marine sediment and water. *Antonie Van Leeuwenhoek* 111, 533–550. doi: 10.1007/s10482-017-0975-7
- Meziti, A., Kormas, K. A., Pancucci-Papadopoulou, M. A., and Thessalou-Legaki, M. (2007). Bacterial phylotypes associated with the digestive tract of the sea urchin *Paracentrotus lividus* and the ascidian *Microcosmus* sp. *Russ. J. Mar. Biol.* 33, 84–91. doi: 10.1134/s1063074007020022
- Miyazaki, M., Sakai, S., Yamanaka, Y., Saito, Y., Takai, K., and Imachi, H. (2014). *Spirochaeta Psychrophila* sp. nov., a psychrophilic spirochaete isolated from subseafloor sediment, and emended description of the genus *Spirochaeta*. *Int. J. Syst. Evol. Microbiol.* 64, 2798–2804. doi: 10.1099/ij.s.0.062463-0
- Moran, N. A., Ochman, H., and Hammer, T. J. (2019). Evolutionary and ecological consequences of gut microbial communities. *Annu. Rev. Ecol. Syst.* 50, 451–475. doi: 10.1146/annurev-ecolsys-110617-062453
- Mortensen, T. (1951). *A Monograph of the Echinoidea/ V. 2: Spatangoida. II.: Amphisternata. II., Spatangidae, Loveniidae, Pericosmidae, Schizasteridae, Brissidae/ Text*. Copenhagen: CA Reitzel.
- Nyholm, S. V., and McFall-Ngai, M. (2004). The winnowing: establishing the squid–*Vibrio* symbiosis. *Nat. Rev. Microbiol.* 2:632. doi: 10.1038/nrmicro957
- Oksanen, J., Blanchet, F. G., Kindt, R., Legendre, P., O'hara, R., Simpson, G. L., et al. (2011). *Vegan: Community ecology package, 2011. R package version, 1.17–18*.
- Palma, A. T., Poulin, E., Silva, M. G., San Martín, R. B., Muñoz, C. A., and Díaz, A. D. (2007). Antarctic shallow subtidal echinoderms: is the ecological success of broadcasters related to ice disturbance? *Polar Biol.* 30, 343–350. doi: 10.1007/s00300-006-0190-x
- Parada, A. E., Needham, D. M., and Fuhrman, J. A. (2016). Every base matters: assessing small subunit rRNA primers for marine microbiomes with mock communities, time series and global field samples. *Environ. Microbiol.* 18, 1403–1414. doi: 10.1111/1462-2920.13023
- Parks, D. H., Tyson, G. W., Hugenholtz, P., and Beiko, R. G. (2014). STAMP: statistical analysis of taxonomic and functional profiles. *Bioinformatics* 30, 3123–3124. doi: 10.1093/bioinformatics/btu494
- Plante, C., and Jumars, P. (1992). The microbial environment of marine deposit-feeder guts characterized via microelectrodes. *Microb. Ecol.* 23, 257–277. doi: 10.1007/BF00164100
- Poulin, E., and Feral, J.-P. (1995). Pattern of spatial distribution of a brood-protecting schizasterid echinoid, *Abatus cordatus*, endemic to the Kerguelen Islands. *Mar. Ecol. Prog. Ser.* 118, 179–186. doi: 10.3354/meps118179
- Quast, C., Pruesse, E., Yilmaz, P., Gerken, J., Schweer, T., Yarza, P., et al. (2013). The SILVA ribosomal RNA gene database project: improved data processing and web-based tools. *Nucleic Acids Res.* 41, D590–D596. doi: 10.1093/nar/gks1219
- Queirós, A. M., Birchenough, S. N., Bremner, J., Godbold, J. A., Parker, R. E., Romero–Ramírez, A., et al. (2013). A bioturbation classification of European marine infaunal invertebrates. *Ecol. Evol.* 3, 3958–3985. doi: 10.1002/ecs3.769
- Quigley, K. M., Warner, P. A., Bay, L. K., and Willis, B. L. (2018). Unexpected mixed-mode transmission and moderate genetic regulation of *Symbiodinium* communities in a brooding coral. *Heredity* 121, 524–536. doi: 10.1038/s41437-018-0059-0
- Raber, T., Gorontzy, T., Kleinschmidt, M., Steinbach, K., and Blotvogel, K.-H. (1998). Anaerobic degradation and transformation of p-toluidine by the sulfate-reducing bacterium *Desulfobacula toluolica*. *Curr. Microbiol.* 37, 172–176. doi: 10.1007/s002849900359
- Ravenscraft, A., Berry, M., Hammer, T., Peay, K., and Boggs, C. (2019). Structure and function of the bacterial and fungal gut microbiota of Neotropical butterflies. *Ecol. Monogr.* 89, e01346. doi: 10.1002/ecm.1346
- Rodriguez-Marconi, S., De La Iglesia, R., Diez, B., Fonseca, C. A., Hajdu, E., and Trefault, N. (2015). Characterization of bacterial, archaeal and eukaryote symbionts from antarctic sponges reveals a high diversity at a three-domain level and a particular signature for this ecosystem. *PLoS One* 10:e0138837. doi: 10.1371/journal.pone.0138837
- Saucède, T., Guillaumot, C., Michel, L., Fabri-Ruiz, S., Bazin, A., and Cabessut, M. (2017). “Modelling species response to climate change in sub-Antarctic islands: echinoids as a case study for the Kerguelen Plateau,” *The Kerguelen Plateau: Marine Ecosystems and Fisheries*, eds D. Welsford, J. Dell, and G. Duhamel (Tasmania, TAS: Australian Antarctic Division), 95–116.
- Sauchyn, L. K., and Scheibling, R. E. (2009). Degradation of sea urchin feces in a rocky subtidal ecosystem: implications for nutrient cycling and energy flow. *Aqu. Biol.* 6, 99–108. doi: 10.3354/ab00171
- Sawabe, T., Oda, Y., Shiomi, Y., and Ezura, Y. (1995). Alginate degradation by bacteria isolated from the gut of sea urchins and abalones. *Microb. Ecol.* 30, 193–202. doi: 10.1007/BF00172574
- Schatt, P., and Feral, J.-P. (1996). Completely direct development of *Abatus cordatus*, a brooding schizasterid (Echinodermata: Echinoidea) from Kerguelen, with description of perigastrulation, a hypothetical new mode of gastrulation. *Biol. Bull.* 190, 24–44. doi: 10.2307/1542673
- Schloss, P. D., Westcott, S. L., Ryabin, T., Hall, J. R., Hartmann, M., Hollister, E. B., et al. (2009). Introducing mothur: open-source, platform-independent, community-supported software for describing and comparing microbial communities. *Appl. Environ. Microbiol.* 75, 7537–7541. doi: 10.1128/AEM.01541-09
- Shannon, P., Markiel, A., Ozier, O., Baliga, N. S., Wang, J. T., Ramage, D., et al. (2003). Cytoscape: a software environment for integrated models of biomolecular interaction networks. *Genome Res.* 13, 2498–2504. doi: 10.1101/gr.1239303
- Sloan, W. T., Lunn, M., Woodcock, S., Head, I. M., Nee, S., and Curtis, T. P. (2006). Quantifying the roles of immigration and chance in shaping prokaryote community structure. *Environ. Microbiol.* 8, 732–740. doi: 10.1111/j.1462-2920.2005.00956.x
- Smyth, G. K. (2005). “limma: Linear Models for Microarray Data,” in *Bioinformatics and Computational Biology Solutions Using R and Bioconductor. Statistics for Biology and Health*, eds R. Gentleman, V. J. Carey, W. Huber, R. A. Irizarry, and S. Dudoit, (New York, NY: Springer).
- Stagaman, K., Burns, A. R., Guillemin, K., and Bohannon, B. J. (2017). The role of adaptive immunity as an ecological filter on the gut microbiota in zebrafish. *ISME J.* 11, 1630–1639. doi: 10.1038/ismej.2017.28
- Steneck, R. S. (2013). “Sea urchins as drivers of shallow benthic marine community structure,” in *Sea urchins: Biology and Ecology*, ed. J. M. Lawrence, (Elsevier: San Diego), 195–212. doi: 10.1016/b978-0-12-396491-5.00014-9
- Taylor, M. W., Tsai, P., Simister, R. L., Deines, P., Botte, E., Ericson, G., et al. (2013). ‘Sponge-specific’ bacteria are widespread (but rare) in diverse marine environments. *ISME J.* 7, 438–443. doi: 10.1038/ismej.2012.111
- Thompson, B. A., and Riddle, M. J. (2005). Bioturbation behaviour of the spatangoid urchin *Abatus ingens* in Antarctic marine sediments. *Mar. Ecol. Prog. Ser.* 290, 135–143. doi: 10.3354/meps290135
- Thorsen, M. S. (1998). Microbial activity, oxygen status and fermentation in the gut of the irregular sea urchin *Echinocardium cordatum* (Spatangoida: Echinodermata). *Mar. Biol.* 132, 423–433. doi: 10.1007/s002270050408
- Thorsen, M. S., Wieland, A., Ploug, H., Kragelund, C., and Nielsen, P. H. (2003). Distribution, identity and activity of symbiotic bacteria in anoxic aggregates from the hindgut of the sea urchin *Echinocardium cordatum*. *Ophelia* 57, 1–12. doi: 10.1080/00785236.2003.10409501
- Van De Water, J. A., Melkonian, R., Junca, H., Voolstra, C. R., Reynaud, S., Allemand, D., et al. (2016). Spirochaetes dominate the microbial community associated with the red coral *Corallium rubrum* on a broad geographic scale. *Sci. Rep.* 6:27277. doi: 10.1038/srep27277
- Vázquez, S., Monien, P., Pepino Minetti, R., Jurgens, J., Curtosi, A., Villalba Primitz, J., et al. (2017). Bacterial communities and chemical parameters in soils and coastal sediments in response to diesel spills at Carlini Station. *Antarctica. Sci. Total Environ.* 605–606, 26–37. doi: 10.1016/j.scitotenv.2017.06.129
- Vismann, B. (1991). Sulfide tolerance: physiological mechanisms and ecological implications. *Ophelia* 34, 1–27. doi: 10.1080/00785236.1991.10429703
- Wegner, C. E., Richter-Heitmann, T., Klindworth, A., Klockow, C., Richter, M., Achstetter, T., et al. (2013). Expression of sulfatases in *Rhodopirellula baltica* and the diversity of sulfatases in the genus *Rhodopirellula*. *Mar. Genomics* 9, 51–61. doi: 10.1016/j.margen.2012.12.001
- Wickham, H. (2006). *ggplot: An implementation of the Grammar of Graphics in R, 2006. R package version 0.4*.
- Yao, Q., Yu, K., Liang, J., Wang, Y., Hu, B., Huang, X., et al. (2019). The composition, diversity and predictive metabolic profiles of bacteria associated with the gut digesta of five sea urchins in Luhuitou fringing reef (northern South China Sea). *Front. Microbiol.* 10:1168. doi: 10.3389/fmicb.2019.01168

- Zhang, F., Tian, Y., Gao, F., Chen, S., Li, D., and Zhou, Y. (2014). Bacterial community in the intestine of the sea urchin *Strongylocentrotus intermedius* during digestion of *Macrocystis pyrifera*. *Mar. Freshw. Behav. Physiol.* 47, 117–127.
- Zhu, D., Tanabe, S. H., Yang, C., Zhang, W., and Sun, J. (2013). Bacterial community composition of South China Sea sediments through pyrosequencing-based analysis of 16S rRNA genes. *PLoS One* 8:e78501. doi: 10.1371/journal.pone.0078501
- Ziegler, A. (2014). Rediscovery of an internal organ in heart urchins (Echinoidea: Spatangoida): morphology and evolution of the intestinal caecum. *Org. Divers. Evol.* 14, 383–395. doi: 10.1007/s13127-014-0178-2
- Zilber-Rosenberg, I., and Rosenberg, E. (2008). Role of microorganisms in the evolution of animals and plants: the hologenome theory of evolution. *FEMS Microbiol. Rev.* 32, 723–735. doi: 10.1111/j.1574-6976.2008.00123.x
- Zinger, L., Amaral-Zettler, L. A., Fuhrman, J. A., Horner-Devine, M. C., Huse, S. M., Welch, D. B., et al. (2011). Global patterns of bacterial beta-diversity in seafloor and seawater ecosystems. *PLoS One* 6:e24570. doi: 10.1371/journal.pone.0024570

Conflict of Interest: The authors declare that the research was conducted in the absence of any commercial or financial relationships that could be construed as a potential conflict of interest.

Copyright © 2020 Schwob, Cabrol, Poulin and Orlando. This is an open-access article distributed under the terms of the Creative Commons Attribution License (CC BY). The use, distribution or reproduction in other forums is permitted, provided the original author(s) and the copyright owner(s) are credited and that the original publication in this journal is cited, in accordance with accepted academic practice. No use, distribution or reproduction is permitted which does not comply with these terms.