



**HAL**  
open science

## **Circulating Endothelial Cells as a Marker of Endothelial Injury in Severe COVID -19**

Christophe Guervilly, Stéphane Burtey, Florence Sabatier, Raphaël Cauchois, Guillaume Lano, Evelyne Abdili, Florence Daviet, Laurent Arnaud, Philippe Brunet, Sami Hraiech, et al.

► **To cite this version:**

Christophe Guervilly, Stéphane Burtey, Florence Sabatier, Raphaël Cauchois, Guillaume Lano, et al.. Circulating Endothelial Cells as a Marker of Endothelial Injury in Severe COVID -19. *Journal of Infectious Diseases*, 2020, 222 (11), pp.1789-1793. 10.1093/infdis/jiaa528 . hal-03171102

**HAL Id: hal-03171102**

**<https://amu.hal.science/hal-03171102>**

Submitted on 16 Mar 2021

**HAL** is a multi-disciplinary open access archive for the deposit and dissemination of scientific research documents, whether they are published or not. The documents may come from teaching and research institutions in France or abroad, or from public or private research centers.

L'archive ouverte pluridisciplinaire **HAL**, est destinée au dépôt et à la diffusion de documents scientifiques de niveau recherche, publiés ou non, émanant des établissements d'enseignement et de recherche français ou étrangers, des laboratoires publics ou privés.



Distributed under a Creative Commons Attribution 4.0 International License

# CIRCULATING ENDOTHELIAL CELLS AS A MARKER OF ENDOTHELIAL INJURY IN SEVERE COVID -19

Christophe Guervilly<sup>1,2</sup>, Stephane Burtey<sup>3,4</sup>, Florence Sabatier<sup>4,6,8</sup>, Raphaël Cauchois<sup>4,5</sup>, Guillaume Lano<sup>3,4</sup>, Evelyne Abdili<sup>6</sup>, Florence Daviet<sup>3</sup>, Laurent Arnaud<sup>6</sup>, Philippe Brunet<sup>3,4</sup>, Sami Hraiech<sup>1,2</sup>, Noémie Jourde-Chiche<sup>3,4</sup>, Marie Koubi<sup>5</sup>, Romaric Lacroix<sup>4,6</sup>, Léa Pietri<sup>7</sup>, Yaël Berda<sup>6</sup>, Thomas Robert<sup>3,4</sup>, Clara Degioanni<sup>8</sup>, Mélanie Velier<sup>4,6</sup>, Laurent Papazian<sup>1,2</sup>, Gilles Kaplanski<sup>4,5</sup>, and Françoise Dignat-George<sup>4,6</sup>.

## Affiliations

<sup>1</sup> Medical Intensive Care Unit, North Hospital, APHM, Chemin des Bourrely, 13015 Marseille, France.

<sup>2</sup> CERESS, Center for Studies and Research on Health Services and Quality of Life EA3279, Aix-Marseille University, 27 Bd Jean Moulin, 13010, Marseille, France

<sup>3</sup> Department of Nephrology and Renal Transplantation, La Conception, APHM, 147 Bd Baille, 13005, Marseille, France.

<sup>4</sup> Aix Marseille Univ, INSERM 1263, INRAE, C2VN, Marseille, 27 Bd Jean Moulin, 13010 France.

<sup>5</sup> Department of Internal Medicine and Clinical Immunology, La Conception Hospital, APHM, 147 Bd Baille, 13005 Marseille, France.

<sup>6</sup> Laboratory of hematology and vascular biology, La Conception Hospital, APHM, 147 Bd Baille, 13005 Marseille, France

<sup>7</sup> Department of Nutrition, Metabolic Diseases, Endocrinology, La Conception Hospital, APHM 147 Bd Baille, Marseille

<sup>8</sup>Cell Therapy Unit, INSERM CBT1409, La Conception Hospital, APHM, 147 Bd Baille, 13005 Marseille, France.

**Corresponding author:**

Pr. Françoise Dignat-George

Francoise.dignat-george@univ-amu.fr

Aix Marseille Univ, INSERM 1263, INRAE, C2VN, 27 Bd Jean Moulin 13005 Marseille, France.

Tel.: + 33 4 91 83 56 00

Fax: + 33 4 91 38 36 02

Accepted Manuscript

## **ABSTRACT**

Beside the commonly described pulmonary expression of the coronavirus disease 2019 (COVID-19), major vascular events have been reported. The objective of this study was to investigate whether increased levels of circulating endothelial cells (CEC) might be associated with severe forms of COVID-19. Ninety-nine patients with COVID-19 were enrolled in this retrospective study. Patients in the intensive care units (ICU) had significantly higher CEC counts than non-ICU patients and the extent of endothelial injury was correlated with putative markers of disease severity and inflammatory cytokines. Altogether, these data provide *in vivo* evidence that endothelial injury is a key feature of COVID-19.

## **SUMMARY**

Circulating endothelial cells detached from injured vessel were measured in 99 hospitalized COVID-19 patients. They were significantly higher in those admitted to ICU, correlated with inflammatory cytokines and severity criteria, indicating that a marked endothelial injury accompanied disease pathogenesis.

**Key words:** Circulating endothelial cells, COVID-19, endothelial injury

## INTRODUCTION

The COVID-19 pandemic, caused by infection with SARS-CoV-2, has become a global threat to public health, affecting more than four million individuals worldwide. COVID-19 patients are usually mildly symptomatic, but 20% of them will evolve towards viral pneumonia, and among them, 5% will experience an atypical form of acute respiratory distress syndrome (ARDS) [1]. SARS-CoV-2 binds to angiotensin-converting enzyme 2 (ACE2), which is highly expressed in the lungs. ACE2 is also expressed by the endothelium [2], one of the largest organs in the human body. Moreover, cardiovascular complications [3] consisting of strokes, pulmonary embolisms, high blood pressure, vasculitis and Kawasaki-like disease [4] are emerging as severe COVID-19 symptoms, suggesting that endothelial injury could constitute a key pathogenic mechanism. Despite widespread interest in the pathophysiology of the disease, little is known about the involvement of the endothelium during the course of COVID-19.

The vascular endothelium is a dynamic organ that plays key roles in vascular homeostasis, such as maintaining vascular tone, permeability and inflammatory response, preserving the hemostatic balance. Any endothelial injury, including infections, impairs regulatory functions of the endothelium with subsequent vasoconstriction, ischemia, inflammation and activation of the coagulation cascade, ultimately leading to vessels denudation and exposure of the thrombogenic subendothelium [5].

Circulating endothelial cells (CEC) are stressed cells detached from injured vessels [6]. They are detectable at very low levels in healthy conditions. Increased CEC counts have been reported in various diseases of inflammatory, infectious or ischemic origin, where they evidence a profound vascular insult and are indicative of disease severity [6]. The objective of the present study was to measure CEC in the blood of patients with COVID-19, in relation to systemic inflammation and disease severity.

## **MATERIALS AND METHODS**

### **Patients**

Ninety-nine adult patients with COVID-19 were enrolled in a retrospective study approved by a local medical ethics committee of Aix-Marseille University. Written informed consent was obtained from the patients or their relatives. COVID-19 was diagnosed when patients presented with viral pneumonia associated with objective findings on lung-CT scan or chest X-ray, and infection was confirmed by positive SARS-CoV-2 RT-PCR in nasopharyngeal swab, sputum or bronchoalveolar lavage. Patients were hospitalized either in the COVID-19 medicine or nephrology units (non-ICU) or in intensive care unit (ICU), depending on the severity of their oxygen requirements. Blood samples were collected by within 48 h of patient admission.

### **Quantification of CEC, soluble endothelial cell adhesion molecules and inflammatory cytokines**

CEC were counted according to a previously published standardized protocol [6]. Briefly, CEC were isolated by immunomagnetic separation with beads (Dynabeads M-450, Thermo Fisher, Carlsbad, CA) coated with CD146 (clone S-endo1, Biocytex, Marseille, France) and enumerated using a fluorescence microscope (Eclipse TE2000-S, Nikon, Tokyo, Japan) after acridine orange labeling. CEC were identified according to the following consensus criteria: stained rosette cells, size over 15  $\mu\text{m}$ , bearing more than five beads.

Plasma (EDTA) levels of soluble Vascular Cell Adhesion Molecule (sVCAM-1) and E-Selectin (sE-Selectin) and serum levels of Interferon gamma-induced protein 10 (IP-10) and interleukin 6 (IL-6) were quantified by magnetic luminex assay (Bio-Techne, Minneapolis, MN)

### **Statistical analysis**

Statistical analysis was performed using SPSS version 15.0 software. Categorical variables were presented as frequencies, and continuous variables were presented as the median [25-75 percentiles]. Comparisons between groups were performed using Mann-Whitney test for quantitative variables and Fisher's exact tests for frequencies. Associations between continuous variables were analyzed using Spearman's correlation tests. Multiple linear regression was performed to determine the impact of cardiovascular risk factors and comorbidities on CEC levels. Statistical significance was defined as  $p < 0.05$ .

### **RESULTS**

Patients' characteristics are reported in table 1. The non-ICU patients were older and less frequently obese than the patients in the ICU. The prevalence of other comorbidities was higher in the non-ICU patients. During their stay in the ICU, all patients needed invasive mechanical ventilation. At inclusion, ICU patients had more severe lymphopenia and higher levels of leukocytes, neutrophils fibrinogen, C-reactive protein and lactate dehydrogenase than non-ICU patients.

Measurement of CEC revealed that 55% of patients had CEC counts above 20 cells/mL, considered as the upper limit of normal values. CEC count was significantly higher in ICU patients than in non-ICU patients (49 [24-103] vs 18 [6-70] CEC/mL,  $p=0.03$ ) (Fig. 1A). CEC counts were negatively correlated

with platelet and lymphocyte counts ( $r=-0.334$ ,  $p=0.0008$  and  $r=-0.336$ ,  $p=0.0007$ , respectively) (Figure 1B), previously identified as COVID-19 severity markers [7]. Interestingly, a positive correlation between the CEC counts and the length of hospital stay ( $r=0.261$ ,  $p=0.02$ ) was observed.

The plasma concentrations of the inflammatory cytokines IL-6 and IP-10, and of two inflammation-induced endothelial adhesive molecules, E-Selectin and sVCAM-1, were significantly higher in ICU patients than non-ICU patients (table 1). CEC counts were correlated with sVCAM-1 ( $r=0.374$ ,  $p=0.0002$ ) and IP-10 concentrations ( $r=0.487$ ,  $p<0.0001$ ) (Figure 1C) but not with sE-Selectin and IL-6 concentrations.

Finally, because we analyzed the relationship between CEC count, comorbidities and cardiovascular risk factors in patients with COVID-19. In univariate analysis, increased CEC levels were associated with CKD but not with high blood pressure, diabetes, age, obesity or CVD. Multivariate analysis integrating age, obesity, hypertension, CKD, cardiovascular disease - and ICU hospitalization, indicated that among comorbidities factors only CKD could be identified as independently associated with CEC counts ( $p= 0.011$ ). Admission in ICU was also associated with high CEC levels independently of all comorbidities that differ between ICU and non ICU patients ( $p=0.046$ ). Consequently, after the exclusion of patients with CKD, the difference between CEC levels in ICU patients compared to non-ICU patients was even more pronounced ( $p=0.002$ ) (Figure 1A).

## DISCUSSION

This is the first observation of increased CEC counts in the blood of patients with COVID-19. CEC counts were significantly higher in patients admitted to the ICU, positively correlated with the length of hospital stay and were inversely correlated with platelet and lymphocyte counts. Increased CEC levels were also associated with increased concentrations of the cytokine IP10 and sVCAM-1. These



results provide *in vivo* evidence that a marked and widespread endothelial injury occurred in the course of proinflammatory vessel activation in the more severe forms of COVID-19.

CEC have been previously reported to be increased in patients with cardiovascular risk factors [6]. Although our cohort showed a high prevalence of various comorbidities, CKD was the only condition identified as a major determinant of elevated CEC counts in patients with COVID-19. Consistently, previous studies indicated that increased CEC counts behave as a marker of endothelial dysfunction with pejorative prognosis value in hemodialysis patients [8]. Thus, more than reflecting preexisting vascular dysfunction associated to typical risk factors, a rise in CEC counts in COVID-19 patients could be indicative of the acute deleterious impact of the disease process itself. However, CKD, which is increasingly recognized as a risk factor for severe COVID-19 development, may favor endothelial vulnerability.

Endothelial involvement across different vascular beds was shown in recent postmortem histopathological observations of COVID-19 patients with multisystem organ failure. Ultrastructural damage, including disruption of intercellular junction, cell swelling and a loss of contacts with the basal membrane, were associated with accumulation of inflammatory cells together with the presence of apoptotic bodies and viral inclusion structures in endothelial cells, recapitulating features of endotheliitis [9,10]. This suggests that both viral infection of endothelial cells and inflammation-induced microangiopathy could contribute to cell detachment and elevated CEC counts. Indeed, other coronaviruses are cytopathic [11] and potent inducers of the intracytoplasmic NLRP3 inflammasome, known to control pyroptosis and to play a role in endothelial detachment in Kawasaki Disease [12], a disease recently associated with the COVID-19 spectrum [4]. Excessive activation of the NLRP3 inflammasome, triggering IL-6 and Interferon- $\gamma$  production may also mediate a severe inflammatory endothelial cell response. Consistent with the “cytokine storm” involved in the severe forms of COVID-19 [13], we found that CEC counts were positively correlated with the

concentrations of IP-10, and sVCAM-1, known to be induced by Interferon- $\gamma$ . This suggests that the cytokine storm plays an important role in the endothelial cell monolayer disruption during SARS-CoV-2 infection, as already reported in other viral diseases [14]. Loss of adhesive contact of infected endothelial cells, involving inflammatory cytokines or leukocytes-derived proteases has also been documented during HSV or CMV infection [6, 15].

Markers allowing to stratify the progression of COVID-19 are helpful to improve the management of patients. Interestingly, we found that the CEC levels in COVID-19 patients were inversely correlated with lymphocytes and platelets counts, recognized as prognostic factors for early identification of severe COVID-19 cases [8]. CEC counts were also correlated with the length of hospital stay. Thus, CEC could be proposed as a noninvasive and specific biomarker to quantify endothelial injury associated with the exacerbated inflammatory host response that characterizes severe COVID-19.

There are some limitations to this study. The small sample size and the overall low mortality rate limited the evaluation of the prognostic value of CEC, notably for the prediction of cardiovascular complications. In addition, because serial blood samples could not be available, future studies are required to investigate the kinetics of CEC and its relationship with COVID 19 evolution and therapeutic interventions.

In conclusion, increased CEC counts provide a direct proof of endothelial damage during the course of COVID-19 and a clinically informative biomarker of disease severity. The data may also bring rationale for therapies that stabilize the endothelium in addition to limiting inflammation in vulnerable patients. Future longitudinal studies are required to define the usefulness of CEC as a non-invasive vascular biomarker for risk stratification and response to treatment.

## Sources of Funding

This work was supported by Aix-Marseille University, INSERM and AP-HM

## Acknowledgements

We thank Patricia Berenger, Cécile Daou, and Léa Plantureux for their technical help during this study. We are also grateful to the many front-line medical and technical staff for their dedication in the face of this outbreak, despite the potential threat to their own lives and the lives of their family.

## Potential conflicts of interest

F. DG and R.L disclose grants from Stago and a patent on microvesicle fibrinolytic activity licensed to Stago. C.G reports personal fees from XENIOS FMC Inc. Similarly, S.B reports personal fees from Otsuka, Bayer and from Sanofi. All these disclosures are outside the submitted work.

## Legends

**Table 1:** Baseline demographics, treatments, biological parameters and outcomes of the study patients

**Figure 1: CEC enumeration in patients with COVID-19. (A)** CEC/mL values in Non-ICU patients (n=80), ICU patients (n=19), Non-ICU Non-CKD patients (Non-ICU CKD -, n=52), patients with CKD (Non ICU CKD +, n=28). **(B)** Correlations between CEC count and platelets and lymphocytes. **(C)** Correlations between CEC count and IP-10 and sVCAM-1.

CEC: circulating endothelial cells. COVID-19=coronavirus disease 2019. ICU: intensive care unit. IP-10: interferon gamma-induced protein 10. sVCAM-1: soluble vascular cell adhesion molecule-1.

## References

1. Richardson S, Hirsch JS, Narasimhan M, et al. Presenting Characteristics, Comorbidities, and Outcomes Among 5700 Patients Hospitalized With COVID-19 in the New York City Area. *JAMA*, **2020** ; e206775.
2. Khan S, Taverna F, Rohlenova K et al. EndoDB: a database of endothelial cell transcriptomics data. *Nucleic Acids Res*, **2019** ; 47: D736-D744.
3. Liu PP, Blet A, Smyth D, Li H. (2020) The Science Underlying COVID-19: Implications for the Cardiovascular System. *Circulation* [in press].
4. Jones VG, Mills M, Suarez D et al.(2020) COVID-19 and Kawasaki Disease: Novel Virus and Novel Case. *Hosp Pediatr*. [in press].
5. Godo S, Shimokawa H. Endothelial Functions. *Arterioscler Thromb Vasc Biol*, **2017** ; 37: e108-e114.
6. Blann AD, Woywodt A, Bertolini F et al. Circulating endothelial cells. Biomarker of vascular disease. *Thromb Haemost*, **2005** ; 93: 228-35.
7. Zhang J, Yu M, Tong S et al. Predictive factors for disease progression in hospitalized patients with coronavirus disease 2019 in Wuhan, China. *J Clin Virol*, **2020** ; 127: 104392.
8. Koc M, Richards HB, Bihorac A et al. Circulating endothelial cells are associated with future vascular events in hemodialysis patients. *Kidney Int*, **2005** ; 67: 1078-83.
9. Varga Z, Flammer AJ, Steiger P et al. Endothelial cell infection and endotheliitis in COVID-19. *Lancet*, **2020** ; 395: 1417-1418.
10. Ackermann M, Verleden SE, Kuehnel M et al. (2020) Pulmonary Vascular Endothelialitis, Thrombosis, and Angiogenesis in Covid-19. *N Engl J Med*. [ in press].

11. Yue Y, Nabar NR, Shi CS et al. SARS-Coronavirus Open Reading Frame-3a drives multimodal necrotic cell death. *Cell Death Dis*, **2018** ; 9: 904.
12. Jia C, Zhang J, Chen H et al. Endothelial cell pyroptosis plays an important role in Kawasaki disease via HMGB1/RAGE/cathepsin B signaling pathway and NLRP3 inflammasome activation. *Cell Death Dis*, **2019** ;10: 778.
13. Tay MZ, Poh CM, Rénia L et al. (2020) The trinity of COVID-19: immunity, inflammation and intervention. *Nat Rev Immunol*. [in press].
14. Bonney S, Seitz S, Ryan CA et al. Gamma interferon alters junctional integrity via rho kinase, resulting in blood-brain barrier leakage in experimental viral encephalitis. *mBio*, **2019** ; 10.
15. Percivalle E, Revello MG, Vago L et al. Circulating endothelial giant cells permissive for human cytomegalovirus (HCMV) are detected in disseminated HCMV infections with organ involvement. *J Clin Invest*, **1993** ; 92: 663-670.

Accepted Manuscript

<b>Demographic information</b>			
Total No.	80	19	
Age <sup>a</sup> (years)	68.2 (57.7-80.3)	55.3 (43.3-60.7)	0.0001
Sex M/F	44/36	12/7	ns
<b>Cardiovascular risk factors</b>			
Obesity <sup>b</sup> , n(%)	15 (19)	9 (47)	0.01
Chronic Kidney Disease <sup>c</sup> , n(%)	28 (35)	0 (0)	0.001
stage 3 n(%)	9 (11)	0 (0)	
stage 4 n(%)	1 (1)	0 (0)	
stage 5D n(%)	18 (23)	0 (0)	
Hypertension, n(%)	43 (54)	4 (21)	0.01
Diabetes, n(%)	20 (25)	4 (21)	ns
<b>Cardiovascular disease, n(%)</b>	<b>24 (30)</b>	<b>0 (0)</b>	<b>0.005</b>
<b>Chronic respiratory disease</b>			
Asthma, n(%)	1 (1)	2 (11)	ns
Chronic Obstructive pulmonary disease, n(%)	3 (4)	0 (0)	ns
<b>Clinical data at admission and treatments received during stay</b>			
Oxygen Saturation <sup>a</sup> , %	96 (94-97)	86.5 (81-93)	<0.0001
Received supplemental oxygen, n(%)	64 (80)	19 (100)	0.04
Invasive mechanical ventilation, n(%)	NA	19 (100)	
Extra Corporeal Membrane Oxygenation, n (%)	NA	8 (42)	

### Anti-viral treatment

Hydroxychloroquine + azithromycine, n (%)	58 (73)	12 (63)	ns
Lopinavir + ritonavir, n (%)	0 (0)	5 (26)	0.0002
None, n (%)	22 (28)	2 (11)	ns

### Outcomes

28 days mortality, n (%)	3 (3)	0 (0)	ns
Transferred into ICU, n (%)	13 (16.3)	NA	
Total length of hospital stay at study end point of alive discharged patients (days)	14 (9-18)	27 (23-34)	0.0001
Hospital discharged at 28 days, n (%)	70 (88)	6 (31)	<0.0001

### Laboratory results at inclusion

White blood cell count <sup>a</sup> (x10 <sup>9</sup> /L)	5.7 (4.6-7.3)	6.7 (5.6-12.0)	0.04
Neutrophil <sup>a</sup> (x10 <sup>9</sup> /L)	3.8 (2.8-5.3)	6.1 (4.2-10.1)	0.002
Lymphocyte <sup>a</sup> (x10 <sup>9</sup> /L)	1.2 (0.8-1.8)	0.9 (0.7-1.1)	0.02
Platelet count <sup>a</sup> (x10 <sup>9</sup> /L)	272 (195-317)	240 (188-310)	ns
Fibrinogen <sup>a</sup> (g/L)	5.7 (4.8-7.5)	6.8 (6.4-7.8)	0.04
D-dimer <sup>a</sup> (ng/ml)	1.6 (0.8-2.1)	2.5 (1.4-4.7)	ns
C-Reactive Protein <sup>a</sup> (mg/L)	49 (19-89)	125 (91-179)	0.004
Lactate dehydrogenase <sup>a</sup> (U/L)	291 (224-344)	473 (376-640)	<0.0001
Creatinine <sup>a, d</sup> (μmol/L)	71 (51-102)	66 (57-80)	ns

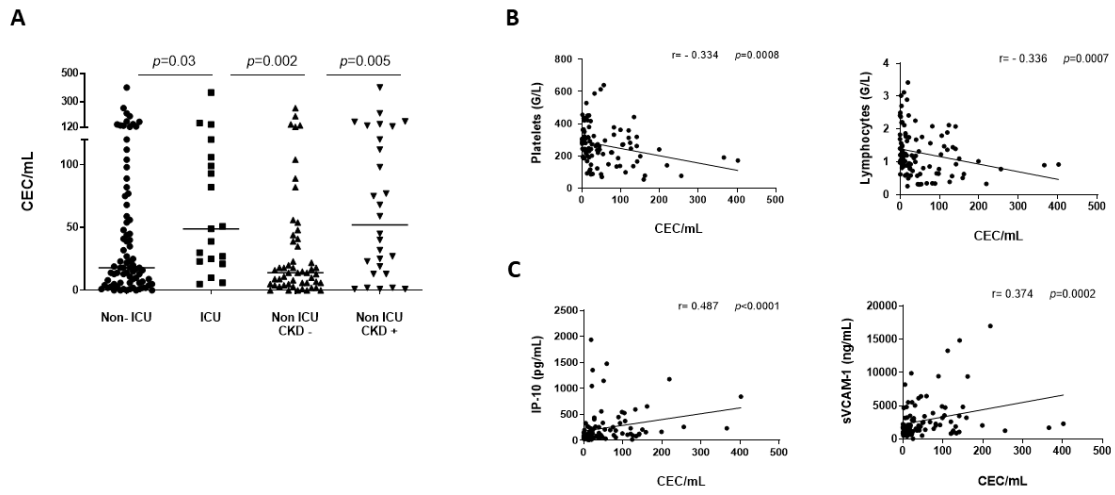
<b>Circulating Endothelial Cells</b>			
CEC (n/ml) <sup>a</sup>	18 (6-70)	49 (24-103)	0.03
<b>Soluble endothelial markers</b>			
sVCAM-1 <sup>a</sup> (ng/mL)	1700 (1135-2992)	2532 (1902-4795)	0.04
sE-Selectin <sup>a</sup> (ng/mL)	25 (20-36)	39 (31-58)	0.008
<b>Cytokines</b>			
IP-10 <sup>a</sup> (pg/mL)	89 (53-211)	227 (134-336)	0.001
IL-6 <sup>a</sup> (pg/mL)	25 (13-48)	93 (44-142)	0.0003

<sup>a</sup> median (25-75 percentile);<sup>b</sup> Obesity was defined as a body mass index > 30kg/m<sup>2</sup>; <sup>c</sup> Chronic kidney disease was defined as an estimated glomerular filtration rate <60mL/min/1.73m<sup>2</sup> or requirement for hemodialysis for more than 3 months; <sup>d</sup> hemodialyzed patients were excluded; M. F, male/female; NA, not applicable; ns, non significant; ICU : intensive care unit; CEC : circulating endothelial cells; sVCAM-1: soluble vascular cell adhesion molecule 1; sE-Selectin: soluble E- Selectin; IP-10: Interferon gamma-induced protein 1; IL-6: interleukin 6.

**Table 1: Baseline demographics, treatments, biological parameters and outcomes of the study patients.**



Figure 1



Accepted Manuscript