



**HAL**  
open science

## The Scf/Kit pathway implements self-organized epithelial patterning

Alexandre Chuyen, Charlotte Rulquin, Fabrice Daian, Virginie Thomé,  
Raphaël Clément, Laurent Kodjabachian, Andrea Pasini

► **To cite this version:**

Alexandre Chuyen, Charlotte Rulquin, Fabrice Daian, Virginie Thomé, Raphaël Clément, et al.. The Scf/Kit pathway implements self-organized epithelial patterning. *Developmental Cell*, 2021, 56 (6), pp.795-810.e7. 10.1016/j.devcel.2021.02.026 . hal-03216498

**HAL Id: hal-03216498**

**<https://amu.hal.science/hal-03216498>**

Submitted on 4 May 2021

**HAL** is a multi-disciplinary open access archive for the deposit and dissemination of scientific research documents, whether they are published or not. The documents may come from teaching and research institutions in France or abroad, or from public or private research centers.

L'archive ouverte pluridisciplinaire **HAL**, est destinée au dépôt et à la diffusion de documents scientifiques de niveau recherche, publiés ou non, émanant des établissements d'enseignement et de recherche français ou étrangers, des laboratoires publics ou privés.

1 **The Scf/Kit pathway implements self-organised epithelial patterning.**

2

3 Alexandre Chuyen<sup>1</sup>, Charlotte Rulquin<sup>1</sup>, Fabrice Daian<sup>1</sup>, Virginie Thomé<sup>1</sup>, Raphaël Clément<sup>1</sup>,

4 Laurent Kodjabachian<sup>1,2,3\*</sup> and Andrea Pasini<sup>1,3\*</sup>

5

6 1. Aix-Marseille Univ, CNRS, IBDM, Marseille, France

7

8 \* Correspondence : [andrea.pasini@univ-amu.fr](mailto:andrea.pasini@univ-amu.fr); [laurent.kodjabachian@univ-amu.fr](mailto:laurent.kodjabachian@univ-amu.fr)

9

10 2. Lead contact

11 3. Co-senior authors

12

13 **Highlights**

14 - Immature multiciliated cells transit from a disordered to an ordered pattern before intercalating  
15 into the epidermis outer layer.

16 - The transition is a self-organising process based on mutual repulsion and affinity for the outer-  
17 layer cell membranes.

18 - Arp2/3-dependent actin remodelling is required for pattern emergence

19 - The Scf/Kit pathway promotes both repulsion- and affinity-mediated movements

20

21 **eTOC blurb**

22 In developing *Xenopus* epidermis, immature multiciliated cells (MCCs), initially randomly  
23 distributed within an inner layer, emerge in an orderly pattern among cells of the outer layer. This  
24 process involves MCC mutual repulsion and affinity towards outer-layer intercellular junctions.

25 The Scf/Kit signalling pathway promotes both properties to allow regular MCC distribution.

26

27

1 **SUMMARY**

2 **How individual cell behaviours lead to the emergence of global patterns is poorly**  
3 **understood. In the *Xenopus* embryonic epidermis, multiciliated cells (MCCs) are born in a**  
4 **random pattern within an inner mesenchymal layer, and subsequently intercalate at regular**  
5 **intervals into an outer epithelial layer. Using both experiments and mathematical modelling,**  
6 **we show that this transition from random to ordered distribution relies on mutual repulsion**  
7 **among motile immature MCCs, and affinity towards outer-layer intercellular junctions.**  
8 **Consistently, Arp2/3-mediated actin remodelling is required for MCC pattern emergence.**  
9 **Using multiple functional approaches, we show that the Kit tyrosine kinase receptor,**  
10 **expressed in MCCs, and its ligand Scf, expressed in outer-layer cells, are both required for**  
11 **regular MCC distribution. Membrane-associated Scf behaves as a potent adhesive cue for**  
12 **MCCs, while its soluble form promotes their mutual repulsion. On the other hand, Kit**  
13 **expression is sufficient to confer order to a disordered heterologous cell population. Our**  
14 **work reveals how a single signalling system can implement self-organised large-scale**  
15 **patterning.**

16

17 **Keywords:**

18 Scf/Kit, pattern formation, self-organisation, *Xenopus*, ciliated epithelium, cell motility, cell-cell  
19 repulsion, adhesion, actin cytoskeleton, contact inhibition of locomotion.

20

21

22

## 1 INTRODUCTION

2 Orderly cellular patterns have always captured the attention of scientists, and understanding the  
3 mechanisms and forces that control their establishment is one of the long-standing aims of  
4 developmental biology. In the past decades, classical and molecular genetics approaches have led  
5 to the identification of robust Gene Regulatory Networks (GRNs) that generate patterns by  
6 concomitantly specifying cellular identity and position within developing embryos (Briscoe and  
7 Small, 2015; Davidson, 2010). However, patterns of regular cell distribution can also emerge  
8 when the stochastic movements of motile cell populations are partially restricted, for example by  
9 mutual repulsion. Such phenomena have been described in rat retina (Galli-Resta et al., 2002),  
10 mouse cerebral cortex (Villar-Cervino et al., 2013), zebrafish epidermal pigmented cells  
11 (Walderich et al., 2016) and *Drosophila* haemocytes (Davis et al., 2012) but the underlying  
12 molecular mechanisms are only starting to be unravelled.

13 In vertebrates, one striking example of ordered cellular pattern is provided by the embryonic  
14 epidermis of the amphibian *Xenopus*, where hundreds of cells carrying multiple motile cilia  
15 (Multiciliated Cells or MCCs) are found distributed among mucus-producing goblet cells,  
16 according to a strict spacing pattern (Deblandre et al., 1999). The ontogeny of this mucociliary  
17 epithelium occurs through a multistep process (Cibois, 2014). At cleavage stages, asymmetric cell  
18 divisions partition the embryonic non-neural ectoderm into an outer epithelial and an inner  
19 mesenchymal layer. At gastrula stages, the outer layer gives rise to a sealed epithelium containing  
20 only goblet cells, while MCCs are born within the inner layer, together with osmoregulatory  
21 ionocytes, serotonin-secreting Small Secretory Cells (SSCs) and basal cells. The Notch, Bmp and  
22 Wnt pathways have been shown to control the number of MCCs, ionocytes and SSCs born within  
23 the inner layer (Deblandre et al., 1999) (Stubbs et al., 2006) (Hayes et al., 2007) (Quigley et al.,  
24 2011) (Cibois et al., 2015; Haas et al., 2019; Huang and Niehrs, 2014). Starting at neurula stages,  
25 the MCCs, ionocytes and SSCs migrate apically in separate waves to radially intercalate into the  
26 outer layer, where they will complete their differentiation (Cibois, 2014). Strikingly, however,

1 only MCCs display a regular pattern of distribution in the mature epithelium. Although the precise  
2 physiological function of *Xenopus* MCCs remains to be addressed, a regular pattern of distribution  
3 may be optimal to homogenize fluid flows powered by beating cilia. MCCs always insert into the  
4 outer layer individually and exclusively in correspondence of junctions among at least three outer-  
5 layer goblet cells (vertices) (Chung et al., 2014; Deblandre et al., 1999; Stubbs et al., 2006).  
6 Radial intercalation involves a first phase in which immature MCCs in the inner layer emit  
7 apically-polarized protrusions to probe outer-layer vertices, followed by a phase of apical  
8 expansion, when their apical aspect actually emerges at the surface of the outer layer and  
9 progressively expands in its plane to allow for cilia assembly (Chung et al., 2014; Sedzinski et al.,  
10 2016; Stubbs et al., 2006). While multiple studies have addressed the cellular and molecular  
11 mechanisms of radial MCC intercalation (Chung et al., 2014; Kim et al., 2012; Sedzinski et al.,  
12 2016, 2017; Sirour et al., 2011; Werner et al., 2014), how the regularly dispersed pattern of mature  
13 MCCs is generated remains to be resolved. It has been suggested that MCC pattern formation may  
14 result from an interplay between the mechanisms that define the numbers of committed immature  
15 MCCs and the number and distribution of outer-layer vertices available for intercalation  
16 (Deblandre et al., 1999; Stubbs et al., 2006; Werner and Mitchell, 2012). While these two  
17 parameters are indisputably involved, it is unclear whether they are sufficient to explain pattern  
18 emergence. Here, we hypothesize that MCC movement may be another key ingredient, which has  
19 never been evaluated. Using transient transgenesis, we could record the movements of immature  
20 MCCs in the inner layer, and concluded that MCC spacing pattern was largely established prior to  
21 intercalation. Using mathematical modelling, we found that mutual repulsion among MCCs and  
22 affinity for outer-layer intercellular junctions are sufficient to account for the final dispersed  
23 pattern. These two behaviours were readily apparent from our live recordings. Confirming the  
24 importance of MCC movements, inhibition of Arp2/3-mediated actin remodelling impaired  
25 lamellipodia-like protrusions in MCCs, homotypic MCC repulsion and MCC spacing pattern,  
26 without affecting intercalation. We also uncover a hitherto unknown role of the signalling

1 pathway dependent on the interaction between the transmembrane tyrosine kinase receptor Kit,  
2 expressed in MCCs, and its ligand Scf, expressed in outer-layer cells, for MCC pattern emergence.  
3 The Scf/Kit signalling pathway has a well-established role in controlling actin cytoskeleton and  
4 cell motility in a variety of vertebrate systems (Lennartsson and Ronnstrand, 2012; Meininger et  
5 al., 1992; Runyan et al., 2006; Samayawardhena et al., 2007; Wehrle-Haller et al., 2001; Zuo et  
6 al., 2016) and Kit stimulation with Scf was found to result in the phosphorylation and activation of  
7 ARP2/3 (Mani et al., 2009). Using a variety of functional assays, we established the capacity of  
8 the Scf/Kit system to promote both the repulsive and adhesive interactions predicted *in silico*, and  
9 thus identified for the first time a major regulator of the *Xenopus* MCC patterning process.  
10 Remarkably, we found that a soluble form of the Scf ligand promotes MCC  
11 dispersion, while a membrane-bound form mediates adhesion. This work illustrates how  
12 a large cell population can self-organise to adopt a regular spacing pattern, through semi-random  
13 movements constrained by a balance between repulsive and attractive cues, both transduced by the  
14 same ligand-receptor system.

15

## 16 **RESULTS**

### 17 **Emergence of MCC ordered pattern precedes radial intercalation.**

18 Fluorescent *In Situ* Hybridization (FISH) of *Xenopus* embryos with the MCC marker  $\alpha$ -tubulin ( $\alpha$ -  
19 *tub*) revealed that at stage 14 (early neural plate stage), immature MCCs were irregularly  
20 distributed within the non-neural ectoderm inner layer (Figure 1A) and very often in direct contact  
21 with each other (Figure 1B). Co-staining with an antibody against the tight junction protein ZO-1,  
22 to mark the outer-layer apical tight junctions, also showed that at this stage  $\alpha$ -*tub*-positive MCCs  
23 were not positioned in correspondence of outer-layer vertices (Figure 1A, 1C). In the course of  
24 development, however,  $\alpha$ -*tub*-positive MCCs were increasingly often found as separate cells  
25 (Figure 1A, 1B), and progressively localized each in correspondence of an individual vertex  
26 (Figure 1A, 1C), into which they finally inserted, thus progressively taking up an apparently more

1 orderly pattern (Figure 1A). To quantify the progression from a randomly dispersed to a regular  
2 distribution, we developed an order index based on Delaunay triangulation of the centroids of  $\alpha$ -  
3 *tub*-positive cells. Such an index is inversely proportional to the variation of distances among  
4 centroids and would reach its highest value when MCC centroids are perfectly ordered in  
5 staggered rows. As shown in Figure 1D, the order index of the MCC population progressively  
6 increased over the 12 hours elapsed between stage 14 and stage 25, when MCCs are intercalated  
7 into the outer layer.

8 The apparent increase in order may result non-exclusively from selective death or cell fate reversal  
9 of misplaced MCCs, or from MCC movements. Fluorescent detection of the apoptotic executioner  
10 Caspase 3/7 activity as a proxy of apoptosis failed to reveal dying cells in the ectoderm of control  
11 embryos from stage 15 to stage 18, as opposed to cycloheximide-treated embryos (Trindade et al.,  
12 2003) (Figure S1A and movie S1). To evaluate the possible contribution of cell-fate reversal, we  
13 performed  $\alpha$ -*tub* FISH in embryos from a transgenic line expressing RFP under the control of the  
14 MCC-specific  $\alpha$ -*tub* promoter (Stubbs et al., 2006). Due to the long RFP half-life (26h), any  
15 immature MCC switching its identity to that of a different inner-layer cell type should retain RFP  
16 fluorescence while losing endogenous  $\alpha$ -*tub* transcripts. Such cases were never observed, ruling  
17 out MCC fate reversal during normal development (Figure S1B, S1C). In contrast, we noticed that  
18 robust  $\alpha$ -*tub* signal was occasionally detected in RFP-negative cells, compatible with rare events  
19 of asynchronous MCC specification (Figure S1B, S1C).

20 The lack of MCC death or fate reversal led us to favour the hypothesis that cell motility might  
21 play a major role in the progressive emergence of a regular pattern of MCC distribution.

22

### 23 **Time-lapse video microscopy reveals MCC motility**

24 To evaluate whether MCCs are motile, we injected embryos with constructs carrying the  
25 fluorescent markers GFP or LifeActGFP (Belin et al., 2014) under the control of the  $\alpha$ -*tub*  
26 promoter, and followed the behaviour of labelled MCCs in living embryos. Despite the high

1 degree of mosaicism, which restricted transgene expression to a small percentage of MCCs,  
2 fluorescence levels were sufficient to allow live recording starting from stage 14 and for a  
3 duration of up to 8 hours. Spinning-disk confocal video microscopy showed that GFP-expressing  
4 MCCs indeed moved actively within the plane of the inner layer until they eventually stopped in  
5 correspondence of vertices where they began to intercalate (Figure 2A and movie 1). As the F-  
6 actin-binding reporter LifeActGFP allowed for much better visualisation of the whole cell shape  
7 and of cellular protrusions, we exploited it for most of our subsequent experiments. We were thus  
8 able to record the mean instant speed of 55 LifeActGFP-expressing MCCs over a maximum of 8  
9 hours. As shown in Figure 2B, MCCs increased their mean instant speed to about  $0.5\mu\text{m}/\text{minute}$   
10 during the first 2.5 hours, then progressively slowed down and stopped in the course of the  
11 successive 6 hours. We also found that LifeActGFP-expressing MCCs extended and retracted  
12 actin-rich lamellipodia-like processes within the ectoderm inner layer and progressively changed  
13 their shape from flat mesenchymal to more compact and pyramidal (Figure 2C and movie 2).  
14 These observations suggested that cell motility may indeed be an important factor in the  
15 establishment of a regular MCC pattern.

16

### 17 **A mathematical model for motile MCC pattern establishment.**

18 We next built an energy-based mathematical model to identify the minimal ingredients necessary  
19 to recapitulate the observed self-organisation of motile MCCs. In this simplified model, MCCs  
20 can move in a bi-dimensional plane against a network representing outer-layer junctions as  
21 defined by ZO-1 immunofluorescence (see STAR methods). As homotypic repulsion is often  
22 required for homogeneous dispersion of motile cellular populations (Davis et al., 2012; Villar-  
23 Cervino et al., 2013), we introduced a first term related to MCC mutual repulsion, such that  
24 proximity to another MCC increased energy (see STAR methods). In addition, we reasoned that  
25 homing of MCCs to outer-layer vertices must imply a marked affinity for these epithelial  
26 junctions. Thus, we introduced a second term related to affinity, such that the overlap of MCCs



1 with junctions decreased energy (see STAR methods). Since in our two-dimensional model  
2 vertices represent the regions of highest possible overlap with junctions, no additional vertex-  
3 specific information was needed. The model also included a steric constraint in the form of a  
4 hard-core potential, to prevent complete overlap between MCCs. Starting from a random spatial  
5 distribution of MCCs, at a density comparable to typical situations observed at stage 14, a  
6 standard Monte-Carlo scheme was used to allow system evolution. At each step, any given MCC  
7 was assigned a random, diffusion-like prospective displacement. A displacement was  
8 systematically accepted if it lowered the system total energy. If on the contrary it increased system  
9 energy, its acceptance probability decayed exponentially with energy increase (see STAR  
10 methods). This eventually led the system towards equilibrium configurations. In an affinity-  
11 dominated regime (i.e. when the contribution of mutual repulsion is negligible), MCCs rapidly re-  
12 located at nearby vertices, where they could maximise their interaction with outer-layer junctions  
13 and minimize their energy. However, this occurred regardless of the position of other MCCs, so  
14 that no overall regularity of distribution was observed (Figure 2D and movie 3). In contrast, in a  
15 repulsion-dominated regime, MCCs repelled each other and distributed according to a regular  
16 pattern that maximized their mutual distance, regardless of the position of outer-layer vertices  
17 (Figure 2E and movie 4). Finally, in an intermediate regime in which the repulsion and affinity  
18 terms were commensurate, a trade-off situation was observed: MCCs were located at outer-layer  
19 vertices and individually scattered, although not in a perfectly regular pattern (Figure 2F and  
20 movie 5; see also STAR methods). This last condition closely resembled the distribution normally  
21 found in embryos. Thus, the self-organised MCC distribution can be captured in a simple  
22 mathematical model where cell movements are required, but constrained by an interplay of  
23 homotypic repulsion and affinity for outer-layer junctions.

24

25 **Mutual repulsion and affinity for outer-layer junctions underlie MCC pattern**  
26 **establishment.**

1 We next explored whether MCC mutual repulsion and affinity for outer-layer junctions predicted  
2 to be important in our *in silico* model were indeed detectable *in vivo*. Firstly, in cases where low  
3 mosaicism allowed for visualisation of several neighbouring LifeActGFP-expressing MCCs we  
4 found that, whenever in the course of their movements two such cells came into contact, they  
5 withdrew from each other (Figure 3A, A' and S2A and movie 6). Measurement of the instant  
6 speed of pairs of colliding MCCs showed that, independently of the developmental stage at which  
7 the collision took place, it was quickly followed by a decrease in the speed of both cells (Figure  
8 3B). Colliding MCCs came to a halt, remained in contact for 12.11 $\pm$ 18.96 minutes (average  $\pm$ -  
9 SD) (Figure 3G), then regained speed in opposite directions in over 80% of observed cases (Figure  
10 3A-B). Secondly, imaging of embryos simultaneously injected with  $\alpha$ -*tub*::LifeActGFP and with a  
11 synthetic mRNA coding for a membrane-localized form of RFP to label outer-layer cells revealed  
12 that, while in the inner layer, most MCCs preferentially moved along the junctions among outer-  
13 layer cells (92.55% of 94 analysed MCCs closely followed outer-layer junctions over >2hrs)  
14 (Figure 3C, H and movie 7). In contrast, only 25% of these MCCs still appeared to migrate along  
15 junctions when the junction-labelling RFP signal was rotated 90° anticlockwise *in silico* to  
16 provide a control (Figure 3H). These observations confirmed that homotypic repulsion and affinity  
17 for outer-layer junctions are likely important for the emergence of a regular MCC pattern.

18 The actin cytoskeleton appeared to be involved in both MCC mutual repulsion and in their affinity  
19 for outer-layer junctions. MCCs often established transient contacts with each other via  
20 LifeActGFP-enriched lamellipodia-like structures that are subsequently retracted (Figure 3A, A' ,  
21 S2A and movie S2) and LifeActGFP-rich cellular protrusions were apically extended by MCCs as  
22 they crawled along junctions among outer-layer cells (Figure S2B and movie S3). As a first step  
23 towards dissecting the role of the actin cytoskeleton in MCC patterning, we took advantage of  
24 well-characterised pharmacological inhibitors of the two main pathways of actin polymerisation:  
25 CK-666, an inhibitor of the actin-branching nucleator Arp2/3 (Hetrick et al., 2013) and SMIFH2,  
26 inhibitor of the actin-bundling factor Formin (Rizvi et al., 2009). FISH for  $\alpha$ -*tub* coupled with

1 ZO-1 IF on embryos treated with 100 $\mu$ M CK-666 from stage 12 and fixed at stage 25 showed that  
2 most MCCs had properly emerged at the outer-layer apical surface (Figure S2C), but were  
3 irregularly distributed and often in direct contact with one another (Figure 3E, 3I, 3J). Consistent  
4 with this observation, spinning-disk confocal video microscopy of  $\alpha$ -*tub*::LifeActGFP- and  
5 mRFP-injected embryos treated with CK-666 revealed that MCCs displayed a decrease of their  
6 mean instant speed (Figure S2D), but a four-fold increase of their mutual contact time (average  
7 time of contact +/- SD: 48.54+/-49.10 min) (Figure 3G), thus forming small clusters (Figure S2E  
8 and movie S4). Furthermore, the correlation between collision and variation in speed was lost  
9 (Figure S2F). However, in CK-666-treated embryos, MCCs still moved preferentially along outer-  
10 layer junctions (92.31% of 26 analysed MCCs) (Figure 3H). Consistent with decreased MCC  
11 instant speed, the total distance covered by tracked MCCs and their total displacement were  
12 reduced compared to control embryos (Figure S2G, H). An apparent increase in the occurrence of  
13 spiky filopodia-like structures over broader, lamellipodia-like ones (Figure S2I, S2I' and movie  
14 S5), reminiscent of what has been described in ArpC3<sup>-/-</sup> murine fibroblast (Suraneni et al., 2015)  
15 was also observed.

16 In contrast to what we observed following CK-666 treatment, in embryos treated from stage 12  
17 with the Formin inhibitor SMIFH2 at 50 $\mu$ M, MCCs were properly dispersed and positioned at  
18 vertices, but their apical emergence at stage 25 was delayed (Figure 3F, I, J and Figure S2C), in  
19 agreement with published data (Sedzinski et al., 2016). Our results thus reveal the importance of  
20 actin cytoskeleton dynamics and cell movements in MCC patterning and uncover a possible  
21 functional dichotomy between actin branching, required for MCC dispersion, and actin bundling,  
22 involved in the apical emergence of MCCs.

23

#### 24 **The Receptor Tyrosine Kinase Kit is expressed in MCCs, its ligand Scf in outer-layer cells.**

25 Next, we searched for a molecular mechanism that could sustain self-organised MCC pattern  
26 emergence. We reasoned that both homotypic repulsion and affinity towards outer-layer junctions

1 must involve cell surface molecules. Our attention was drawn to the Receptor Tyrosine Kinase  
2 (RTK) Kit, which has been identified as a transcriptional target of the MCC-inducing factor  
3 Multicilin/Mcidas in *X. laevis* epidermis (Kim et al., 2018; Ma et al., 2014; Stubbs et al., 2012). In  
4 addition, its transcripts have been detected by single-cell transcriptomics in *X. tropicalis* MCCs  
5 (Briggs et al., 2018)  
6 ([https://kleintools.hms.harvard.edu/tools/currentDatasetsList\\_xenopus\\_v2.html](https://kleintools.hms.harvard.edu/tools/currentDatasetsList_xenopus_v2.html)). As the signalling  
7 pathway dependent on Kit and its ligand Stem Cell Factor (Scf, also known as Kitlg, Mast Cell  
8 Growth Factor or Steel Factor) is known to control actin cytoskeleton and cell motility, we  
9 hypothesized that it might also be involved in controlling the cellular behaviours that underlie the  
10 regular pattern of *Xenopus* MCCs. Whole-mount *in situ* hybridisation (ISH) with an RNA probe  
11 recognizing transcripts of both *kit-L* and *kit-S* homeologs detected expression by scattered cells in  
12 the non-neural ectoderm starting from early gastrula (stage 10) and persisting through later  
13 developmental stages (stage 26) (Figure S3A). FISH on sectioned embryos revealed that in the  
14 developing epidermis *kit* transcripts were exclusively co-expressed with the MCC markers *foxj1*  
15 and *α-tubulin* (Figure 4A). Conversely, expression throughout the developing non-neural  
16 ectoderm has been reported for *scf-L* and, at much lower levels, for *scf-S* (Goldman et al., 2006;  
17 Martin and Harland, 2004) (Figure S3B). RT-PCR on total mRNA from animal caps confirmed  
18 the expression of *scf-L* from stage 12 to 22, but failed to detect *scf-S* (Figure S3C). FISH revealed  
19 that *scf-L* transcripts were prevalently localised in the outer layer, with much lower levels of  
20 expression in the inner layer (Figure S3B'). In particular, *scf-L* expression was rarely detected and  
21 only at very low levels in *kit*-positive MCCs (Figure 4B). Accordingly, single-cell transcriptomics  
22 revealed that in *X. tropicalis* non-neural ectoderm, expression of *scf* is highest in goblet cells and  
23 excluded from MCCs (Briggs et al., 2018)  
24 ([https://kleintools.hms.harvard.edu/tools/viewTree.html?tree data/final\\_180213](https://kleintools.hms.harvard.edu/tools/viewTree.html?tree%20data/final_180213)).

25 In many tetrapods, Scf is synthesised as a transmembrane molecule but alternative splicing of the  
26 exon 6 during mRNA maturation can remove a major serine-protease cleavage site. As a result,

1 the exon 6-containing isoform is cleaved to release a soluble peptide, while the exon 6-spliced  
2 isoform can only be cleaved at much slower rates at other sites, and thus has a longer half-life as a  
3 cell membrane-associated molecule (Brannan et al., 1991; Flanagan et al., 1991; Lennartsson and  
4 Ronnstrand, 2012). Both soluble and membrane-anchored isoforms of Scf are able to activate the  
5 Kit receptor, albeit with different kinetics and biological outcomes (Gommerman et al., 2000;  
6 Lennartsson and Ronnstrand, 2012; Miyazawa et al., 1995; Tabone-Eglinger et al., 2014; Tabone-  
7 Eglinger et al., 2012). RT-PCR with primers encompassing exon 6 showed that only the exon 6-  
8 containing isoform of *scf-L* is detected in developing *Xenopus* ectoderm (Figure S3C). However,  
9 the residues coded by exon 6 in Scf-L and Scf-S have very low similarity to mammalian exon 6  
10 and do not display obvious consensus sites for proteolytic cleavage (Hultman et al., 2007). To  
11 address the subcellular localisation of *Xenopus* Scf, we generated a construct coding for a C-  
12 terminal EGFP-tagged version of Scf-L (Figure 4C) and expressed it in *Xenopus* embryonic  
13 ectoderm alone or together with an RFP-tagged version of the tight junction protein ZO-1 (Higashi  
14 et al., 2016). Scf-GFP chimeric protein was primarily detected in the lateral plasma membrane of  
15 outer ectodermal cells, just basal to ZO1-RFP (Figure 4D, 4D'). However, Western blotting of  
16 lysates of Scf-GFP-injected animal caps with an anti-GFP antibody revealed the presence of a  
17 peptide compatible with cleavage within exon 6, together with the uncleaved full-length protein  
18 (Figure 4E). We thus assume that both membrane-anchored and soluble forms of Scf-L may be  
19 present in the developing *Xenopus* ectoderm.

20

### 21 **Perturbations of the Scf/Kit signal disrupt MCC patterning**

22 As a first step towards addressing the possible role of Kit signalling in MCC pattern  
23 establishment, we took advantage of the Kit tyrosine-kinase pharmacological inhibitor, axitinib  
24 (Hu-Lowe et al., 2008). Spinning-disk confocal video microscopy of  $\alpha$ -*tub::LifeActGFP*- and  
25 mRFP-injected embryos treated with 50 $\mu$ M axitinib from stage 12 showed that MCCs retained  
26 their motility (Figure S4A), but displayed a strongly decreased mutual repulsion (Figure 5A and

1 movie 8) with a time of contact of 59.20 $\pm$ 58.15min (average $\pm$ SD) (Figure 5C). The robust  
2 correlation between mutual contact and variation in speed and direction was lost (Figure S4B),  
3 and some colliding MCCs continued moving as pairs or groups (Figure S4C-H movie S6 and  
4 movie S7). However, neither the cumulative distance covered by MCCs nor their effective  
5 displacement were affected (Figure S4I, J), in contrast to what was observed upon CK-666  
6 treatment (Figure S2G, H). In axitinib-treated embryos, MCCs kept crawling along outer-layer  
7 junctions (91.07% of 56 analysed MCCs) (Figure 5C'). An  $\alpha$ -tub FISH/ZO-1 IF time course on  
8 axitinib-treated embryos confirmed that MCCs were largely able to intercalate but did not disperse  
9 properly (Figure 5E, 5G-I). As an alternative method to impair Kit activity, we injected a  
10 dominant-negative form lacking the TK domain of the receptor (Goldman et al., 2006).  
11 Consistently, dn-Kit also caused severe disruption of MCC spacing, although apical emergence  
12 and ciliogenesis were largely preserved (Figure S5 and movie S8). Only few Kit-deficient MCCs,  
13 often still in direct contact to already inserted ones, were found trapped within the internal layer at  
14 stage 25 (Figure S5D').

15 To further confirm the involvement of Kit in MCC pattern establishment, we designed  
16 morpholino-modified antisense oligonucleotides (MOs) to block the translation of *kit-L* and *kit-S*  
17 mRNAs (MO-ATG-*kit-L* and MO-ATG-*kit-S*), or their splicing at the exon2-intron2 junction  
18 (MO-splice-*kit-L* and MO-splice-*kit-S*) (Figure S6A, S6B). After validation (Figure S6C, S6D),  
19 MOs were injected in the two animal ventral blastomeres of 8-cell embryos as cocktails of either  
20 MO-ATG-*kit-L+S* (10ng/blastomere) or MO-splice-*kit-L+S* (15ng/blastomere). Similar to  
21 axitinib-treated and *dn-kit*-injected embryos,  $\alpha$ -tub FISH and ZO-1 IF at stage 25 showed that *kit*  
22 MO-injected MCCs were properly intercalated but irregularly distributed and present in small  
23 clusters (Figure 5F-I). Co-injection of *kit* MOs with an mRNA coding for full-length Kit-S and  
24 carrying seven silent mutations rescued MCC dispersion, thus confirming that this phenotype can  
25 be specifically attributed to Kit inactivation (Figure S6E, S6E'). As splicing- and translation-  
26 blocking *kit* MOs yielded the same results (Figure S6F, S6F'), all subsequent experiments were

1 performed with the latter ones. Thus, spinning-disk confocal video microscopy of embryos  
2 injected with *α-tub::LifeActGFP* and 10ng/blastomere *kit* MOs revealed that MCCs remained  
3 motile (Figure S6G), but failed to separate from each other (average time of contact +/- SD:  
4 58.48+/-53.31 min) (Figure 5B,C). In addition, they were compromised in their ability to follow  
5 outer-layer intercellular junctions (67.14% of 70 analysed MCCs followed junctions) (Figure  
6 5B,C' and movie 9). Remarkably, *kit* MO-injected MCCs appeared to emit more filopodia-like  
7 than lamellipodia-like structures, similar to CK-666 treatment (Figure 5B' and movie 9).

8 As Kit function is likely to reflect interaction with its cognate ligand Scf, we then proceeded to  
9 address the effect of Scf knockdown on MCC pattern. MOs were designed to block the translation  
10 of both *scf-L* and *scf-S* mRNAs (MO-ATG-*scf-L/S*) (Goldman et al., 2006), or the exon2-intron2  
11 splicing of the *scf-L* mRNA (MO-splice-*scf-L*) (Figure S7A, S7B). After validation (Figure S7C,  
12 S7D), 10ng/blastomere of MO-ATG-*scf-L/S* was injected in epidermal precursor blastomeres at 8-  
13 cell stage. *α-tub* FISH and ZO-1 IF at stage 25 showed defects in MCC dispersion (Figure 6A-D),  
14 while insertion into the outer layer appeared largely normal (Figure S7E). Injection of  
15 10ng/blastomere of MO-splice-*scf-L* led to the same phenotype as MO-ATG-*scf-L/S* (Figure S7F,  
16 S7F') and this latter MO was used for all subsequent experiments. Spinning-disk confocal video  
17 microscopy of embryos injected with *α-tub::LifeActGFP* and *scf* MO showed that MCCs  
18 remained motile (Figure S7G), but displayed a strongly reduced repulsion (average time of contact  
19 +/- SD: 40.31+/-20.04 min) (Figure 6E, 6F and movie 10).

20 Remarkably, when *scf* MO was injected with mRFP at 16-cell stage to increase mosaicism, MCCs  
21 at stage 25 preferentially accumulated at the border of Scf-depleted clones (78%, n=953)(Figure  
22 6G). In contrast 48% MCCs (n=1113) were found at the borders of control mRFP clones (Figure  
23 S7H). Analysis at stage 16 showed that MCCs were initially distributed homogeneously across *scf*  
24 MO-injected and uninjected areas, suggesting that the observed terminal distribution was due to  
25 migration of MCCs outside regions devoid of Scf during the 9 hours separating stages 16 and 25.  
26 Spinning-disk video microscopy of areas straddling clonal boundaries showed that indeed, MCCs

1 often left Scf-depleted regions and stopped migrating as soon as they encountered an uninjected  
2 outer-layer cell. Interestingly, a majority of MCCs appeared to move across *scf* MO-injected  
3 regions without following outer-layer junctions (only 43.55% of 62 analysed MCCs followed  
4 junctions) (Figure 6H, 6I and movie 11). Strikingly, *in silico* simulations revealed that MCC  
5 accumulation at clonal boundaries could only be recapitulated when both MCC mutual repulsion  
6 and affinity towards outer-layer junctions were absent from clones surrounded by normal tissue  
7 (Figure 6J and movies 12-14). This suggests that Scf might be able to convey both a repulsive and  
8 an adhesive signal.

9

### 10 **The Scf/Kit signalling system promotes both adhesive and repulsive functions.**

11 Our data suggest that the Scf/Kit pathway supports both mutual MCC repulsion and MCC affinity  
12 for outer-layer junctions. One tempting mechanistic explanation for this duality is that, as  
13 described in other model systems, the soluble and the membrane-anchored forms of Scf each  
14 control a distinct function (Gommerman et al., 2000; Jordan and Jackson, 2000; Lennartsson and  
15 Ronnstrand, 2012; Miyazawa et al., 1995; Tabone-Eglinger et al., 2014; Tabone-Eglinger et al.,  
16 2012). As a first step to test this hypothesis, we ectopically expressed the Scf-GFP chimera in  
17 MCCs by means of the  $\alpha$ -*tub* promoter. Similar to outer-layer cells (Figure 4D), MCCs displayed  
18 a fraction of Scf-GFP signal at the plasma membrane (Figure 7A). We also reasoned that MCCs  
19 do not normally express Scf and may lack the enzymes required for its proteolytic processing.  $\alpha$ -  
20 *tub* FISH at stage 25 showed that large clusters of non-injected MCCs formed around Scf-GFP-  
21 expressing MCCs (Figure 7A, B). This suggests that high-level Scf expression in MCCs creates a  
22 situation where adhesion dominates repulsion. Spinning-disk video microscopy further confirmed  
23 that Scf-GFP-expressing MCCs formed closely packed groups that did not dissociate over periods  
24 of more than 3h (Figure 7C and movie 15). Thus, Scf can act as a potent adhesive cue towards  
25 Kit-expressing MCCs.



1 To address the function of soluble Scf, we generated a construct lacking the MO-binding sequence  
2 and carrying a FLAG tag followed by a stop codon immediately 5' to the stretch corresponding to  
3 exon 6, thus coding a FLAG-tagged version of the extracellular portion of the protein (MOresScf-  
4 ECD-FLAG) (Figure 7D). Western blotting with an anti-FLAG antibody confirmed the presence  
5 of the protein in the concentrated supernatant of animal caps injected with *MOresScf-ECD-FLAG*  
6 mRNA, alone or together with MO-ATG-*scf-L/S* (Figure 7E). While this construct injected alone  
7 in 8-cell stage embryos slightly impaired MCC dispersion, it significantly decreased MCC  
8 clustering in Scf morphants (Figure 7F-J), suggesting that soluble Scf can by itself promote MCC  
9 dispersion.

10 Finally, we tested whether the presence of the Kit receptor was sufficient to help dispersion of  
11 non-MCC intercalating cells. To this aim, embryos were injected with an mRNA coding for full-  
12 length Kit-S and subjected to FISH with a probe against the ionocyte marker, *vla* (Quigley et al.,  
13 2011). In control embryos, ionocytes displayed an irregular pattern of distribution and were often  
14 found in adjacent positions (Figure 7K, N). In contrast, *kit* RNA injection endowed ionocytes with  
15 the capacity to disperse and adopt a more regular pattern of distribution (Figure 7L-O). This last  
16 set of experiments suggests that the Scf/Kit signalling system is sufficient to promote adhesive and  
17 repulsive functions, both necessary to establish a regular pattern of MCC distribution, and that  
18 these functions are likely to depend on separable activities of the membrane-anchored and soluble  
19 form of Scf, respectively.

20

## 21 **DISCUSSION**

### 22 ***Xenopus* MCC patterning relies on cell movements**

23 Although *Xenopus* MCCs have been the object of extensive investigation in the past years, most  
24 studies have focused on their specification within the inner epidermal layer and on the mechanics  
25 of their radial intercalation among outer-layer goblet cells. In contrast, much less is known on the  
26 mechanisms that control MCC distribution pattern. A pioneering study proposed that the MCC

1 scattered pattern results from Notch-mediated lateral inhibition in the inner layer and the  
2 constraint of intercalation at outer-layer vertices (Deblandre et al., 1999). However, it was later  
3 suggested that the outer layer can accommodate up to twice as many MCCs upon Notch  
4 inhibition, with no violation of the non-contiguity rule (Deblandre et al., 1999; Stubbs et al.,  
5 2006). This indicates that in normal condition, vertices are in large excess of incoming MCCs and  
6 that MCC spacing is not directly linked to the pattern of distribution of vertices. Our data are the  
7 first to unambiguously show that MCCs actively move within the inner layer and that motility is a  
8 necessary condition of their transition from a random distribution, characterized by extensive  
9 inter-MCC contacts, to an orderly pattern, where MCCs are present as isolated cells, each  
10 localised in correspondence of an outer-layer vertex. In situations of severe actin or Scf/Kit  
11 pathway perturbations, we found that regular spacing between MCCs was lost despite proper  
12 intercalation. Thus, we can safely conclude that MCC pattern establishment occurs independently  
13 of radial intercalation. *In silico* simulation defined two conditions required to evenly distribute a  
14 population of internal motile cells below epithelial vertices: 1) motile cells must repel each other,  
15 thus minimizing their mutual contacts, 2) they must maximize their contacts with outer-layer  
16 junctions, so as to stabilize at vertices, which offer the highest local density of junctions. Filming  
17 live MCCs in developing embryos allowed us to visualize these two behaviours and to reveal that  
18 actin cytoskeleton is involved in both. Immature MCCs in the inner layer extend unpolarized  
19 basolateral actin-rich protrusions with which they move and explore the surrounding environment.  
20 Whenever two such MCCs come into direct contact, the actin-rich protrusions involved in the  
21 contact are retracted, while others are deployed in different regions of the cell body, thus resulting  
22 in the two cells moving away from each other. These features are typical of homotypic repulsion  
23 mediated by contact inhibition of locomotion, which has previously been shown to promote  
24 cellular tiling (Stramer and Mayor, 2016). Concomitantly, immature MCCs also emit apically-  
25 polarized actin-rich protrusions towards junctions between outer-layer cells. Despite the fact that  
26 both basolaterally- and apically-directed actin protrusions largely coexist within each MCC, a

1 clear temporal shift between the two is observed: over time, the basolateral protrusive activity  
2 decreases, while the apically-directed one gains in intensity and stability (see example in Figure  
3 2C and movie 2). This shift correlates with a progressive decrease of MCC motility within the  
4 inner layer (Figure 2C). As a result, by early tailbud stage, all MCCs end up finding a free vertex  
5 at regular intervals, to which they anchor and through which they finally intercalate. For a tissue-  
6 wide regular pattern to emerge from an initial irregular distribution, MCCs are expected to display  
7 asynchronous movements and walk for variable distances. These two predictions are supported by  
8 our data. First, instant speed measurements indeed reveal that MCCs do move out of phase when  
9 their motility is highest (Figure 2B). Second, the displacement of individual MCCs can vary  
10 within a 20-fold range (Figure S4E,I,J).

11

### 12 **Self-organised generation of a regular cellular pattern by mutual repulsion and homing.**

13 Our data show that within the inner layer of the developing *Xenopus* epidermis, immature MCCs  
14 move in a partially random fashion, their free displacements being constrained by mutual  
15 repulsion and affinity for outer-layer intercellular junctions, and that these movements are  
16 required for the establishment of a regularly-dispersed MCC pattern. Although mathematical  
17 simulation allowed us to uncouple mutual repulsion from affinity to junctions, we have so far been  
18 unable to do so experimentally. Thus, the contribution of affinity to junctions to the patterning  
19 process may appear more difficult to envisage than mutual repulsion. Our interpretation is that  
20 affinity to outer-layer junctions is required to balance mutual repulsion, so as to prepare MCCs for  
21 intercalation into a partially regular matrix of vertices, constantly subjected to deformations  
22 caused by embryo extension, outer cell growth, division or death, events of radial intercalation,  
23 and possibly neighbor exchange.

24 Our work prompts analogies with other instances of developmental patterns emerging from the  
25 semi-stochastic movements of cell populations. Phenomena of contact-dependent homotypic  
26 repulsion in which mutually contacting cells withdraw projections and/or change direction of

1 movement underlie the regular distribution of Cajal-Retzius (CR) neurons (Villar-Cervino et al.,  
2 2013) and Retinal Horizontal (RH) cells (Galli-Resta et al., 2002) in mammals, pigment cells in  
3 zebrafish (Walderich et al., 2016) and haemocytes in *Drosophila* (Davis et al., 2012). The case of  
4 *Xenopus* MCC patterning shows nevertheless some specificities. Most notably, MCCs are already  
5 present throughout most of the developing epidermis at the start of the patterning process, such  
6 that their scattering relies almost exclusively on short-range “wobbling” random movements,  
7 without need for a concomitant long-range directional migration as is the case for CR neurons.  
8 Consistently, MCCs are unpolarised and lack a well-defined leading process. Moreover, unlike  
9 *Danio* pigment cells, scattering MCCs are post-mitotic and the patterning system does not have to  
10 adjust to variations in absolute cell numbers. Finally, in sharp contrast with *Drosophila*  
11 haemocytes, which continue moving and repelling each other at every encounter, even after  
12 regular distribution is reached, dispersed MCCs become fixed by anchoring and intercalating into  
13 outer-layer vertices. Interestingly, to our knowledge, the only other described case of (semi-)  
14 orderly epithelial intercalation of a population of individually dispersed motile cells occurs during  
15 the development of the peripheral nervous system in the cephalochordate *Amphioxus* (Benito-  
16 Gutierrez et al., 2005; Kaltenbach et al., 2009), but the underlying mechanisms are unknown.

17 Overall, our work reveals a new instance of self-organised tissue-wide developmental patterning  
18 emerging from the interplay of stochastic short-range repulsive and stabilizing intercellular  
19 interactions rather than relying on tightly controlled GRNs and classical guidance mechanisms.  
20 This is probably the most information-parsimonious strategy to optimise the distribution of a cell  
21 population whose function requires that its area of dispersion be covered completely but non-  
22 redundantly. Our identification of a molecular pathway responsible for controlling MCC  
23 dispersion, independently of cell numbers and differentiation, will make it possible to functionally  
24 explore the physiological meaning of such a pattern and the possible outcome of its perturbation.

25

26 **Implementation of *Xenopus* MCC patterning by the Scf/Kit pathway.**

1 The molecular mechanisms controlling homotypic repulsion-mediated patterning have been  
2 clearly identified in few cases only. The Eph RTKs and their ephrin ligands control the dispersion  
3 of CR neurons in the mammalian cortex (Villar-Cervino et al., 2013). Protocadherins and the  
4 immunoglobulin-superfamily proteins Dscams have been involved in the homotypic repulsion  
5 phenomena underlying mammalian RH cells tiling (Fuerst et al., 2008; Ing-Esteves et al., 2018),  
6 while the scattering of zebrafish pigment cells appears to rely on a variety of cell surface  
7 molecules, among which connexins and a potassium channel (Irion et al., 2014; Iwashita et al.,  
8 2006).

9 Our data show that the signal triggered by the interaction between the RTK Kit and its ligand Scf  
10 is required to establish the regularly dispersed pattern of *Xenopus* MCCs. Although this  
11 notoriously pleiotropic signalling pathway has been involved in many instances of cell migration,  
12 cell movement, cell adhesion, axonal guidance and cytoskeletal rearrangement, this is the first  
13 time that it has been shown to play a role in controlling the tissue-wide regular dispersion of a  
14 large cell population. Remarkably, *kit* appears to be a direct transcriptional target of the  
15 multiciliogenesis master controller Multicilin/Mcidas (Kim et al., 2018; Ma et al., 2014; Stubbs et  
16 al., 2012). Such integration, through a common regulator, of fate determination and motility  
17 behaviour may explain how thousands of individual cells can self-organise to achieve a global  
18 collective pattern.

19 Our results are also remarkable in showing that the activity of a single receptor/ligand couple can  
20 result in the two opposite but temporally coexisting biological outcomes of MCC mutual repulsion  
21 and affinity for outer-layer junctions. Although these two phenomena might seem difficult to  
22 reconcile, the Scf/Kit signalling system has already been shown to promote apparently contrasting  
23 cell behaviours, such as migration and homing/adhesion, for example in melanoblasts (Jordan and  
24 Jackson, 2000; Wehrle-Haller and Weston, 1995), Hematopoietic Stem Cells (HSCs) (Heissig et  
25 al., 2002; Tajima et al., 1998) and Primordial Germ Cells (PGCs)(Gu et al., 2009; Gu et al., 2011;  
26 Runyan et al., 2006). Currently, the simplest and most widely accepted explanation, supported by

1 *in vivo*, *ex vivo* and *in vitro* data, is that the membrane-bound and the soluble forms of the Scf  
2 ligand can both bind to and activate the Kit receptor, but with different kinetics, therefore  
3 triggering distinct, probably antagonistic signalling pathways and eliciting distinct cellular  
4 responses. In relevance to our work, soluble Scf has been shown to lead to transient activation of  
5 the Kit intrinsic TK activity, and linked to promotion of cell motility (Jordan and Jackson, 2000;  
6 Tabone-Eglinger et al., 2014; Tabone-Eglinger et al., 2012). Conversely, membrane-bound or  
7 immobilised Scf leads to formation of long-lived adhesive Scf/Kit complexes at the cell surface,  
8 independently of Kit TK activity (Tabone-Eglinger et al., 2014; Tabone-Eglinger et al., 2012). Our  
9 data show that the transmembrane Scf can be cleaved in *Xenopus* epidermis, thus suggesting that  
10 the dichotomy between membrane-associated and soluble Scf-dependent signals also controls the  
11 balance between adhesion and repulsion required for correct MCC patterning. It is easy to picture  
12 that the basolateral localisation of transmembrane Scf in outer-layer cells might favour/stabilise  
13 the interaction of Kit-expressing MCCs with intercellular junctions, and even more so with  
14 vertices, where the density of the Scf signal is expected to be highest. This view is supported by  
15 our observations that MO-mediated depletion of Scf or Kit altered MCC migration along outer-  
16 layer junctions. In contrast, axitinib treatment did not cause the same defect, suggesting that TK  
17 activity is dispensable for MCC/outer cell interaction, consistent with published evidence  
18 (Tabone-Eglinger et al., 2014). Our ectopic expression assay also clearly demonstrated that full-  
19 length Scf can act as a potent adhesive cue towards Kit-expressing MCCs. Incidentally, it also  
20 revealed that the patterning system cannot afford Scf to be expressed in MCCs, consistent with our  
21 double FISH data, and with transcriptomic analysis suggesting that *Mcidas* negatively regulates  
22 *scf* (Ma et al., 2014).

23 By contrast, it is less simple to envision how soluble Scf can promote MCC mutual repulsion  
24 (Figure 7J). One possible explanation is that soluble Scf permeating the inner layer provides a  
25 motogenic signal, as described for example for mouse melanoblasts (Jordan and Jackson, 2000),  
26 thus keeping MCCs constantly moving around and dispersing until they are anchored to a free

1 vertex by the strongly adhesive signal of membrane-bound SCF. However, analysis of the mean  
2 instant speed of MCCs in Scf-depleted, Kit-depleted, and axitinib-treated embryos failed to  
3 uncover significant differences with control embryos. The total distance covered by MCCs and  
4 their overall displacement were not significantly reduced either in axitinib-treated embryos.  
5 Altogether, our data suggest that the Scf/Kit pathway controls the actual mutual repulsion  
6 phenomenon, rather than the capacity of MCCs to move.

7 One explanation could be that the interaction between soluble Scf and Kit might initiate a cross-  
8 talk with other molecules expressed at the MCC surface and directly responsible for the mutual  
9 repulsion response, such as Ephrins and Ephs. However, the remarkable finding that the  
10 overexpression of wild-type Kit is sufficient to induce the dispersion of ionocytes suggests that the  
11 repulsive activity relies largely on the presence of Kit itself, or that necessary cofactors are not  
12 restricted to MCCs. It is thus likely that the signalling cascade connecting Kit to the cytoskeletal  
13 effectors of cell repulsion and attraction is a rather direct and short one.

14

#### 15 **Scf/Kit signalling and MCC actin cytoskeletal dynamics.**

16 Our data from pharmacological inhibition experiments suggest that different modes of actin  
17 polymerization, required for the formation of distinct types of cellular protrusions, control separate  
18 aspects of MCC behaviour. Following treatment with CK-666, an inhibitor of the actin-branching  
19 factor Arp2/3, MCCs present more filopodia-like extensions, show decreased motility and mutual  
20 repulsion and major patterning defects, but no intercalation abnormalities. Interestingly, Arp2/3-/-  
21 fibroblasts, in which motility only relies on filopodia, also show defects in mutual repulsion-  
22 dependent cell movements (Suraneni et al., 2012).

23 On the other hand, treatment with the actin bundling inhibitor SMIFH2 strongly delays  
24 intercalation without affecting patterning. The Scf/Kit pathway has been shown to control Arp2/3  
25 activation (Mani et al., 2009) and in our model system its inhibition indeed results in defects  
26 partially similar to those due to CK-666 treatment: Kit-deficient MCCs make filopodia-like

1 protrusions and present patterning defects but are able to insert into the outer layer. Both CK-666  
2 treatment and Scf/Kit pathway inhibition also increase the duration of MCC mutual contacts.  
3 However, unlike CK-666 treatment, Scf/Kit pathway perturbations do not lead to a decrease of  
4 MCC motility, again suggesting a direct effect on the mutual repulsion phenomenon. We can thus  
5 propose a model in which the main role of the Scf/Kit pathway in *Xenopus* immature MCCs is the  
6 promotion of actin-based lamellipodia formation: Kit activation by soluble Scf would facilitate the  
7 formation of transient basolateral lamellipodia, required for redirecting MCC movements away  
8 from each other after mutual contact; membrane bound Scf would stabilize the more persistent  
9 apical protrusions required for anchoring MCCs to the vertices. Such a model warrants future  
10 validation by cell biological and biochemical approaches.

11

## 12 **Conclusions**

13 We show here that, during development, seemingly complex and highly ordered cell patterns can  
14 be obtained by the combination of two relatively simple cell behaviours, without need for a highly  
15 regulated patterning system. Moreover, deployment of the same signalling system, presumably  
16 activated with different kinetics by soluble and membrane-anchored forms of a single ligand, can  
17 control both behaviours. This work further stresses the importance of self-organising systems in  
18 developmental biology.

19

## 20 **ACKNOWLEDGMENTS**

21 AC was supported by a doctoral fellowship from the French Ministry for Higher Education,  
22 Research and Innovation (MESRI). CR was supported by a postdoctoral fellowship from the  
23 Turing Centre for Living Systems (CENTURI). The project leading to this publication has  
24 received funding from Excellence Initiative of Aix-Marseille University - A\*MIDEX, a French  
25 “Investments for the Future” program (Projet ‘Pépinière d’Excellence 2017 to AP). The work was  
26 also supported by funding from Cancéropôle PACA (Programme Emergence 2017 to AP), the



1 Fondation pour la Recherche Médicale (DEQ20141231765, EQU201903007834 to LK), and the  
2 Association pour la Recherche contre le Cancer (PJA 20141201815 to LK). Imaging was  
3 performed on PiCSL-FBI core facility supported by the French National Research Agency through  
4 the “Investments for the Future” program (France-BioImaging, ANR-10-INBS-04). We are  
5 indebted to E. Bazellères, J. Christian, R. Harland, C. Kintner, A. Miller, O. Rosnet and J-P.  
6 Tassan for the gift of plasmids. We thank F. Roguet for *Xenopus* husbandry. We warmly thank  
7 Anna Adamiok, Marie Cibois and Marie Zilliox for preliminary experiments, Marc Billaud,  
8 Claudio Collinet and Laurence Röder for insights on the project, past and present members of the  
9 Kodjabachian laboratory, in particular Camille Boutin and Olivier Rosnet, for discussions, help  
10 and technical support, Elsa Bazellères and Vincent Bertrand for insightful comments on the  
11 manuscript.

12

### 13 **AUTHOR CONTRIBUTION (According to CRediT)**

14 Conceptualisation: AC, LK, AP. Methodology: AC, RC, CR, FD, VT, AP. Software: RC, CR, FD.  
15 Formal analysis: AC, RC, CR, FD. Investigation: AC, RC, CR, FD, VT, AP. Validation: AC, CR,  
16 FD, VT, RC, LK, AP. Resources: LK. Supervision: LK, AP, RC. Project administration: LK, AP.  
17 Funding acquisition: LK, AP, RC. Writing-original draft: AC, AP. Writing-review and editing: LK,  
18 AP.

19

20

### 21 **DECLARATION OF INTERESTS**

22 The authors declare no competing interests.

23

### 24 **FIGURE LEGENDS**

25 **Figure 1. The orderly pattern of mature MCCs results from progressive changes in cell**  
26 **distribution.**

1 **A:** Fluorescent *In Situ* Hybridization (FISH) was used to reveal  $\alpha$ -tubulin-positive immature  
2 MCCs (green), combined to immunofluorescence against the tight junction protein ZO-1 to reveal  
3 outer-layer intercellular junctions (white). In the course of development, MCCs were increasingly  
4 found as isolated, regularly-shaped cells, each localised in correspondence of a single outer-layer  
5 vertex. Scale bar is 25 $\mu$ m. **B:** Graph showing the percentage of  $\alpha$ -tub-positive cells directly in  
6 contact with varying numbers of other  $\alpha$ -tub-positive cells (gray-shaded from 0 to to  $\geq 4$ ). **C:**  
7 Graph showing the number of ZO-1-positive outer-layer vertices superimposable onto the planar  
8 projection of each  $\alpha$ -tub-positive MCC. Whiskers shows the 2.5-97.5 percentiles. **D:** Graph  
9 showing the order index calculated from Delaunay tessellation of the centroids of  $\alpha$ -tub-positive  
10 cells. The order index increased during development, reflecting the progressive transition from a  
11 chaotic to an orderly MCC distribution.

12

13 **Figure 2. MCCs are motile and *in silico* modelling reveals that mutual repulsion and affinity**  
14 **for outer-layer junctions are required for proper pattern establishment.**

15 **A:** Spinning-disk confocal video microscopy was used to track  $\alpha$ -tub::GFP transgenic MCCs  
16 within the inner epidermal layer. Still frames from movie 1 are shown. Asterisks point two MCCs  
17 that moved under mRFP-injected outer-layer cells. Blue and orange dots serve as landmarks to  
18 appreciate MCC mobility. **B:** Graph showing the instant speed of 55 LifeActGFP-expressing  
19 MCCs recorded over a maximum of 8 hours. Dotted light-grey lines: instant speeds of individual  
20 MCCs. Black line: mean instant speed of the 55 MCCs; the dark grey area represents the standard  
21 error. **C:** Still frames from movie 2.  $\alpha$ -tub::LifeActGFP revealed an intense actin-based protrusive  
22 activity that progressively shifted from the basolateral to the apical aspect of the cell. For each  
23 frame, orthogonal view maximum intensity projection was made on the x axis (bottom panel) and y  
24 axis (right panel). **D-F:** Frames from simulation movies 3, 4 and 5, respectively. The black  
25 meshwork represents outer-layer intercellular junctions, and red circles the underlying MCCs. The  
26 upper row shows the initial random distribution of MCCs, the bottom row shows the final patterns

1 obtained under the different regimes. **D:** In a model where MCC affinity for outer-layer junctions  
2 dominated, MCCs localised at vertices, but failed to disperse properly. **E:** In a model where MCC  
3 mutual repulsion dominated, MCCs were regularly distributed, but did not localise at vertices. **F:**  
4 In a model where mutual repulsion and affinity for outer-layer junctions were balanced, MCCs  
5 were dispersed and positioned at vertices.

6

7 **Figure 3. MCCs display both behaviours of mutual repulsion and affinity for outer-layer**  
8 **junctions.**

9 **A:** Initial and final frames from movie 6.  $\alpha$ -tub::LifeActGFP labelling reveals that whenever  
10 MCCs come in contact, they moved away from each other. Six MCCs were filmed, of which two  
11 (n°1, red dot and n°2, light blue dot) were tracked over the entire duration of the movie. **A':**  
12 Higher magnification of frames from movie 6 to better show that the collision event between  
13 MCCs n°1 (red arrowhead) and n°2 (light blue arrowhead) was followed by a change in their  
14 direction of movement and by their separation. **B:** Graph showing the instant speed of MCCs n°1  
15 (red line) and n°2 (light blue line) from movie 6. 'C' and 'S' indicate contact and separation  
16 events, respectively; mathematical exponents label the MCCs from movie 6 to which contact and  
17 separation events refer. **C:** Frames from movie 7 showing an  $\alpha$ -tub::LifeActGFP-labelled MCC  
18 (magenta asterisk) moving along the intercellular junctions among overlying outer-layer cells  
19 labelled by mRFP. The blue and the red arrowheads highlight the initial and final position of the  
20 labelled MCC. The last panel recapitulates the positions of the observed MCC over 3h. The black  
21 dotted line shows the displacement of the MCC centroid. **D-F:** Embryos were treated from stage  
22 12 with 1% DMSO (D), 100 $\mu$ M Arp2/3 inhibitor CK-666 (E), and 50 $\mu$ M Formin inhibitor  
23 SMIFH2 (F) and analysed at stage 25 by  $\alpha$ -tub FISH and ZO-1 IF to examine MCC patterning. **E:**  
24 Following CK-666 treatment, MCCs intercalated into the outer layer but were irregularly  
25 distributed. **F:** Treatment with SMIFH2 led to a normal MCC patterning but impaired apical  
26 insertion and expansion. In all cases, scale bar is 20 $\mu$ m. **G:** Graph showing the duration of MCC

1 mutual contacts in control and CK-666 treated embryos. \*\*\*\* p-value < 0.0001 in a student t-test.  
2 **H:** Graph showing the proportion of MCCs that followed outer-layer junctions over a period of 2h  
3 in controls, in controls where the outer-layer signal was rotated 90° counter-clockwise *in silico*,  
4 and in CK-666 treated embryos. **I:** Graph showing MCC order index in CK-666-treated embryos  
5 vs control embryos. **J:** Graph showing the distribution of the number of contacts between MCCs  
6 at stage 25 in control, CK-666- and SMIFH2-treated embryos.

7

8 **Figure 4. Expression of transcripts encoding Kit and its ligand Scf in the developing *Xenopus***  
9 **epidermis.**

10 **A:** Double FISH on sectioned embryos with probes against *kit* (green) and the MCC markers  
11 *foxJ1* or  $\alpha$ -*tubulin* (red) revealed that *kit* was only expressed in MCCs. **B:** Double FISH on  
12 sectioned embryos showed that *scf-L* (red) expression was prominent in outer-layer cells and  
13 virtually undetectable in *kit*-positive MCCs (green). In **A** and **B**, DAPI (blue) highlights the nuclei.  
14 **C:** Schematic drawing of the Scf-GFP chimaera, showing the extracellular (EC), transmembrane  
15 (TM) and intracellular (IC) domains of Scf-L (light blue), the C-terminal EGFP tag (green), the  
16 possible protease cleavage site in exon 6 (red arrowhead), as well as the sizes of the full-length  
17 protein and the membrane-retained cleavage product. **D:** Top view of live outer-layer cells from  
18 an embryo injected with mRNAs coding for the Scf-GFP (green) and the RFP-ZO-1 (red) fusion  
19 proteins. GFP fluorescence was localised at the membrane. Scale bar is 20µm. **D':** Orthogonal  
20 view of the intercellular junction within the dashed white box in **D** shows that the Scf-GFP  
21 chimaera was mainly localised to the basolateral membrane, immediately basal to ZO-1. Scale bar  
22 is 5µm. **E:** Lysates from animal caps injected with mRNA coding for either GFP or Scf-GFP were  
23 subjected to Western blotting with an anti-GFP antibody. Single and double asterisks point  
24 respectively to the 55kDa full-length Scf-GFP and to the 37kDa band corresponding to the  
25 membrane-retained product of proteolytic cleavage at exon 6.

26

1 **Figure 5. Inhibition of Kit activity disrupts MCC patterning.**

2 **A:** Frames from movie 8. In 50 $\mu$ M axitinib-treated embryos, LifeActGFP-positive MCCs (green,  
3 magenta asterisk) failed to properly separate from each other. **B:** Frames from movie 9. In MO-  
4 ATG-*kit-L+S*-injected embryos, LifeActGFP-positive MCCs (green, magenta asterisk) failed to  
5 properly separate from each other. In **A** and **B**, mRFP (red) labelled outer-layer cell membranes.  
6 **B'**: A close-up of the boxed area in **B**, showing highly-branched filopodia-like structures. **C:**  
7 Quantification of MCC mutual contact times in control, axitinib-treated and MO-ATG-*kit-L+S*-  
8 injected embryos. \*\*\*\* p-value < 0.0001 in a student t-test. **C'**: Graph showing the proportion of  
9 MCCs that followed outer-layer junctions over a period of 2h in control, axitinib-treated and *kit*  
10 MO-injected embryos. **D-F:**  $\alpha$ -*tub* FISH (green) and ZO-1 IF (white) showed that compared to  
11 control embryos (**D**) MCCs were irregularly distributed in axitinib-treated (**E**) and *kit* MO-  
12 injected (**F**) embryos at stage 25. In **F**, mRFP mRNA (red) was used as *kit* MO tracer. In all cases,  
13 scale bar is 20 $\mu$ m. **G:** Graph showing the percentage of MCCs intercalated into the outer layer at  
14 stages 20, 22 and 25. Intercalation was scored positive when MCCs displayed ZO-1 junctions. Kit  
15 inhibition delayed but did not prevent intercalation. **H:** Graph showing the distribution of the  
16 number of contacts between MCCs at stage 25 in control, axitinib-treated and *kit* MO-injected  
17 embryos. The progressive dispersion of  $\alpha$ -*tub*-positive MCCs is disrupted in Kit-deficient  
18 conditions. **I:** Graph showing MCC order index at stage 25 in axitinib-treated and *kit* MO-injected  
19 embryos vs control embryos.

20

21 **Figure 6. Down-regulation of the Scf signal disrupts MCC patterning.**

22 **A, B:**  $\alpha$ -*tub* FISH (green) and RFP IF (red) revealed that compared to control embryos (**A**) MCCs  
23 were irregularly distributed in *scf* MO-injected embryo (**B**) at stage 25. mRFP mRNA was used as  
24 *scf* MO tracer and to outline outer-layer cells. **C:** Quantification of MCC mutual contacts in  
25 control and *scf* MO-injected embryos. **D:** Graph showing MCC order index at stage 25 in *scf* MO-  
26 injected embryos vs control embryos. **E:** Frames from movie 10. In *scf* MO-injected embryos,

1 LifeActGFP-positive MCCs (green) failed to properly separate from each other. mRFP (red)  
2 labelled outer-layer cell membranes. Asterisks label individual MCCs. Dots label two outer-layer  
3 cells for reference. **F:** Graph showing the duration of MCC mutual contact in control and *scf* MO-  
4 injected embryos. \*\*\*\* p-value < 0.0001 in a student t-test. **G:**  $\alpha$ -*tub* FISH (green) and RFP IF  
5 (red) of embryos injected with *scf* MO at 16-cell stage and fixed at different developmental times.  
6 RFP was used as a MO tracer. MCCs were evenly distributed between MO-positive (red) and  
7 MO-negative areas at stage 16 (left column) and accumulated at the boundary between the two  
8 areas at later stages (middle and right columns). **H:** Frames from movie 11, showing a  
9 LifeActGFP-positive MCC (yellow asterisk), which left its initial position within the MO-positive  
10 area (white arrowhead) and stopped at the boundary with the MO-negative region. In contrast,  
11 MCCs outside the MO-positive area did not significantly move. The yellow dotted line shows that  
12 the tracked MCC did not follow outer-layer junctions. In all cases, scale bar is 20 $\mu$ m. **I:** Graph  
13 showing that a majority of MCCs did not follow outer-layer junctions in *scf* MO-injected embryos  
14 compared to control. **J:** Frames from simulation movie 12. Mathematical modelling predicted that  
15 motile MCCs tend to accumulate at boundaries between regions devoid of both repulsive and  
16 attractive signals and in normal regions.

17

18 **Figure 7. Adhesive and repulsive activities of Scf/Kit signal.**

19 **A:**  $\alpha$ -*tub* FISH and GFP IF on stage 25 embryos injected with  $\alpha$ -*tub*::Scf-GFP shows that non-  
20 injected  $\alpha$ -*tub*-positive MCCs formed tightly-packed aggregates around Scf-GFP-positive MCCs.  
21 Scale bar is 20 $\mu$ m. **B:** Graph showing the distribution of the number of MCC mutual contacts in  
22 control and  $\alpha$ -*tub*::Scf-GFP injected embryos. **C:** Frames from movie 15 showing the stability of  
23 Scf-GFP-positive MCCs clusters over time. Scale bar is 20 $\mu$ m. **D:** Schematic drawing of the full-  
24 length Scf molecule (top) and of the MOresScf-ECDw/oEx6-FLAG truncated version. **E:** Western  
25 blotting with an anti-FLAG antibody revealed the presence of the FLAG-tagged truncated protein  
26 (black arrowhead) in the concentrated supernatant from animal caps injected with the *MOresScf*-

1 *ECDw/oEx6-FLAG* mRNA alone or together with MO-ATG-*scf-L/S*. Concentrated supernatant  
2 from matched GFP-expressing animal caps was used as a negative control. The non-specific signal  
3 at 40kDa serves as a loading control. **F-J:** MOresScf-ECDw/oEx6-FLAG restores the dispersion  
4 of MCCs in MO-ATG-*scf-L/S*- injected embryos. **F:** Control embryos. **G:** Embryos injected with  
5 30ng MO-ATG-*scf-L/S*. **H:** Embryos injected with 10pg *MOresScf-ECDw/oEx6-FLAG* mRNA. **I:**  
6 Embryos co-injected with 10pg *MOresScf-ECDw/oEx6-FLAG* mRNA and 30ng MO-ATG-*scf-*  
7 *L/S*. In all cases, scale bar is 50µm; green: *α-tub* FISH, red: mRFP IF as a tracer. **J:** Graph  
8 showing the number of MCC mutual contacts. \*\*\*\* p-value < 0.0001 in a Chi-squared test. **K-M:**  
9 Control embryos (**K**) and embryos injected with 0.1 (**L**) or 1ng (**M**) mRNA coding for full length  
10 Kit-S, fixed at stage 25 and processed for FISH with the ionocyte marker *vla*. IF against  
11 endogenous ZO-1 (**K**) or against co-injected mRFP (**M, N**) highlighted outer-layer junctions. Kit  
12 overexpression led to more even dispersion of ionocytes compared to control. Scale bar is 50µm.  
13 **N:** Graph showing that ionocytes established fewer mutual contacts in Kit-S injected than in  
14 control embryos. \*\*\*\* p-value < 0.0001 on a Chi-squared test. **O:** Ionocyte order index was  
15 increased in Kit-S-injected embryos with respect to control embryos.

16

## 17 **STAR METHODS**

18

### 19 **Ethics statement**

20 All procedures were performed following the Directive 2010/63/EU of the European parliament  
21 and of the council of 22 September 2010 on the protection of animals used for scientific purposes.  
22 Experiments on *X. laevis* were approved by the ‘Direction Départementale de la Protection des  
23 Populations, Pôle Alimentation, Santé Animale, Environnement, des Bouches du Rhône’  
24 (agreement number F 13 055 21).

25

### 26 **Embryo culture and injection**

1 Ovulation was stimulated in *X. laevis* adult females from NASCO (<https://www.enasco.com>) by  
2 injection of (800 units/animal) Human Chorionic Gonadotropin (Chorulon<sup>R</sup>). On the following day,  
3 eggs were recovered by squeezing, fertilized *in vitro* with sperm from NASCO males, de-jellied in  
4 2% cysteine hydrochloride (pH 8.0) and washed, first in water, then in 0.1X MBS (Modified  
5 Barth's Saline). Embryos were kept in 0.1X MBS at 13°C, 18°C or 23°C until they reached the  
6 stage suitable for injection (8-cell or 16-cell), then transferred in 4% Ficoll in 1X MBS. Injections  
7 were performed using needles made from pulled glass capillaries and mounted on a Nanoject II  
8 injector (Drummond). Embryos were injected in animal ventral blastomeres to target the non-  
9 neural ectoderm. One blastomere (in 8-cell stage embryos) or two contralateral blastomeres (in 16-  
10 cell stage embryos) were injected, according to the desired degree of mosaicism. Transgenic  $\alpha$ -  
11 *tub::RFP* adult females were purchased from the National Xenopus Resource center.

12

13 **Plasmids**

<b>Plamid name</b>	<b>backbone</b>	<b>linearized with</b>	<b>amount injected/blastomere</b>	<b>Reference</b>
p $\alpha$ Tub::GFP	pCS2+	NotI	50-60pg	Stubbs et al. 2006
p $\alpha$ Tub::RFP	pCS2+	NotI	50-60pg	Made in the lab
p $\alpha$ Tub::LifeActGFP	pCS2+	NotI	50-60pg	
p $\alpha$ Tub::LifeActRFP	pCS2+	NotI	50-60pg	
p $\alpha$ Tub::Scf-GFP	pCS2+	NotI	50-60pg	
pCS107-Scf-L-GFP	pCS107	NotI	//	
p $\alpha$ Tub::MOresKit-S	pCS2+	NotI	//	
pCMV-MOresKit-S	pCMVSPORT	NotI	//	
pMOresScf-ECDw/oEx6- FLAG	Patented vector	XhoI	//	



1  
2 All *α-tubulin* promoter-based constructs were generated from *pa-tub::GFP* (a gift from C. Kintner),  
3 either with the In-Fusion<sup>R</sup> HD Cloning Kit (Takara Bio) or by standard restriction enzyme-  
4 mediated cloning.  
5 For In-Fusion cloning, the *pa-tub::* backbone, excluding the GFP ORF, was PCR amplified using  
6 the Phusion<sup>R</sup> High-Fidelity DNA Polymerase (New England BioLabs, #M0530) and the primers  
7 *patubfor*:5'-TCTAGAACTATAGTGAGTCGT-3' and *patubrev*:5'-  
8 CGACCGGTGGATCTGTTGTTGG-3'.  
9 To generate *pa-tub::RFP*, the RFP ORF was PCR amplified from the pCS2+mRFP plasmid (a gift  
10 from O. Rosnet) with the Phusion<sup>R</sup> High-Fidelity DNA Polymerase and the primers  
11 *InFuRFPfor*:5'-CAGATCCACCGGTCGCATGGCCTCCTCCGAGGACGT-3' and  
12 *InFuRFPprev*:5'-CACTATAGTTCTAGATTAGGCGCCGGTGGAGTGGCG.  
13 To generate *pa-tub::LifeActGFP*, the LifeActGFP ORF was PCR amplified from the pmEGFP-  
14 *Lifeact-7* plasmid (a gift from E. Bazellieres) with the Phusion<sup>R</sup> High-Fidelity DNA Polymerase  
15 and the primers *InFuLifeactfor*:5'-CAGATCCACCGGTCGTATGGGTGTCGCAGATTTGAT-3'  
16 and *InFuLifeactGFPprev*:5'-CACTATAGTTCTAGATTACTTGTACAGCTCGTCCA-3'.  
17 To generate *pa-tub::LifeActRFP*, the LifeActRFP ORF was PCR amplified from the pmRuby-  
18 *Lifeact-7* plasmid (a gift from E. Bazellieres) with the Phusion<sup>R</sup> High-Fidelity DNA Polymerase  
19 and the primers *InFuLifeactfor*:5'-CAGATCCACCGGTCGTATGGGTGTCGCAGATTTGAT-3'  
20 and *InFuRFPprev*:5'-CACTATAGTTCTAGATTAGGCGCCGGTGGAGTGGCG.  
21 In all the above cases, the vector and insert PCR products were run on agarose/TAE gel, purified  
22 with the Macherey-Nagel<sup>TM</sup> NucleoSpin<sup>TM</sup> Gel and PCR Clean-up kit, then recombined using the  
23 In-Fusion<sup>R</sup> HD Cloning Kit according to the manufacturer's instructions.  
24 To make the pCS107-Scf-L-GFP construct, the pCS107-XISteel1 plasmid (a gift of R. Harland),  
25 containing the Scf-L cDNA, was PCR amplified using the Phusion<sup>R</sup> High-Fidelity DNA  
26 Polymerase and the primers *Steel1fus-for*:5'-GCCACAAATCCCCCTTGTAAGT-3' and *Scf1-*

1 3'endfus-rev:5'-TATAACACCGACATCAGTTGTGG-3', in order to generate a linearized  
2 backbone lacking the *scf-L* stop codon and 3'UTR. The *GFP* ORF was PCR amplified from the  $\alpha$ -  
3 *tub::GFP* construct using the Phusion<sup>R</sup> High-Fidelity DNA Polymerase and the primers Scf1-  
4 GFPfus-for:5'-GATGTCGGTGTATAGTGAGCAAGGGCGAGGAGC-3' and GFP3'Scf1fus-  
5 rev:AGGGGGATTTGTGGCTTACTTGTACAGCTCGTCACT-3'. Vector and insert PCR  
6 products were run on agarose/TAE gel, purified with the Macherey-Nagel<sup>TM</sup> NucleoSpin<sup>TM</sup> Gel and  
7 PCR Clean-up kit, then recombined using the In-Fusion<sup>R</sup> HD Cloning Kit according to the  
8 manufacturer's instructions.

9 The pCS107-Scf-L-GFP plasmid was used both as template for making *scf-GFP* mRNA and to  
10 generate the  $\alpha$ -*tub::Scf-GFP* construct. To this aim, the *scf-L-GFP* ORF was PCR amplified from  
11 pCS107-Scf-L-GFP using the Phusion<sup>R</sup> High-Fidelity DNA Polymerase and the primers  
12  $\alpha$ tubSCFGFPfor:5-CAGATCCACCGGTCGTATGAAGAAGACAAAACTTGG-3' and  
13 InFuLifeactGFPprev:5'-CACTATAGTTCTAGATTACTTGTACAGCTCGTCCA-3'. The gel-  
14 purified PCR product was recombined into the  $\alpha$ Tub<sup>+</sup>: backbone using the In-Fusion<sup>R</sup> HD Cloning  
15 Kit.

16 To generate the pCMV-MOresKit-S plasmid, the *kit-S* ORF was PCR amplified from the  
17 Dharmacon/GE clone 4030854 (*Xenopus laevis kit-b*), using the Phusion<sup>R</sup> High-Fidelity DNA  
18 Polymerase and the primers  $\alpha$ tubMOresKitSfor:5-  
19 CAGATCCACCGGTCGTGCTACAATGAGTCACATCCCTTTTCTGACTGTTCAGG -3' (in  
20 bold, the *kit-S* start codon, in bold underlined the seven silent mutations introduced to generate  
21 mismatches with MO-ATG-*Kit-S*) and  $\alpha$ tubKitSrev:5'-  
22 CACTATAGTTCTAGATCAGCCGTCGCTGTTCATCAACAG-3'. The gel-purified PCR  
23 product was recombined into the  $\alpha$ -*tub::* backbone using the In-Fusion<sup>R</sup> HD Cloning Kit, thus  
24 creating the  $\alpha$ -*tub::*MOresKit-S plasmid. This was subsequently cut with AgeI and NotI and the  
25 *MOreskit-S* ORF-containing fragment was ligated into AgeI/NotI cut pCMVSPORT6.

1 The construct pMOresScf-ECDw/oEx6-FLAG was generated by e-Zyvec (Loos, France; [www.e-zyvec.com](http://www.e-zyvec.com)) according to their patented technology. Details on this vector are available upon  
 2 request.  
 3

4 All constructs were made using the Stellar™ Competent Cells (Clontech) transformed and grown  
 5 according to the manufacturer's instructions. Small- and medium-scale plasmid preparations were  
 6 performed with Macherey-Nagel™ NucleoSpin™ Plasmid QuickPure™ and NucleoBond™ Extra  
 7 Midi kits.

8

9 **mRNA synthesis**

10 Sense mRNAs were synthesized from linearized plasmids with the Ambion mMessage mMachine  
 11 kit® (Life Technologies) according to the details provided in the table below, then purified with  
 12 Macherey-Nagel™ NucleoSpin™ RNA Clean-up kit. After determination of the concentration,  
 13 aliquots were kept at -80°C.

Plasmid name	Vector	Linearised with	Transcribed with	Amount injected /blastomere	Reference
pCS2+mRFP	pCS2+	NotI	Sp6 RNA pol	0,5 ng	
pCS2+GFPgpi	pCS2+	NotI	Sp6 RNA pol	0,5ng	Chartrain et al., 2003
pCS107-Scf-L-GFP	pCS107	NotI	Sp6 RNA pol	1 ng	Made in the lab
pCS2+RFP-ZO1	pCS2+	NotI	Sp6 RNA pol	1ng	Higashi et al., 2016
pCS2+dnKit	pCS2+	NotI	Sp6 RNA pol	0,5ng	Goldman et al., 2006
pCMV-dnKit-GFP	pCMVSPORT6	NotI	Sp6 RNA pol	0,5g	Made in the lab
pCMV-MOresKit-S	pCMVSPORT6	NotI	Sp6 RNA pol	0.1-1ng	Made in the lab

pMOresScf- ECDw/oEX6-FLAG	Patented vector	XhoI	Sp6 RNA pol	10pg	Made by e-Zyvec www.e-zyvec.com
------------------------------	--------------------	------	-------------	------	------------------------------------

1

## 2 Morpholinos

3 Morpholinos (MOs) were purchased from GENE TOOLS®. *ATG-kit-L-MO* and *ATG-kit-S-MO*  
4 were injected together at 10ng/MO/blastomere. *Kit-S-e2i2spl-MO* and *Kit-L-e2i2spl-MO* were  
5 injected together at 15ng/MO/blastomere. *ATG-Scf-L/S-MO* was injected at 10ng/blastomere and  
6 *Scf-L-e2i2spl-MO* at 20ng/blastomere. The blue-tagged version of *ATG-Scf-L/S-MO* was injected  
7 at 20ng/blastomere.

MO name	Sequence
<i>ATG-kit-L-MO</i>	5'-TCGTAAAGGATGGAAAGTGGCTCAT-3'
<i>ATG-kit-S-MO</i>	5'-CCGTAAGGAATGGAATATGGCTCAT-3'
<i>kit-S-e2i2spl-MO</i>	5'-TGTAACCTTATGAATGACTTACCCT-3'
<i>kit-L-e2i2spl-MO</i>	5'-GGAACCCAATGAATGACTTACCCTT-3'
<i>ATG-scf-L/S-MO</i>	5'-GGTAGCTTGTCTATTATCCCCTTAG-3'
<i>scf-L-e2i2spl-MO</i>	5'-TGGCTAGGTAAAACCTTACCAGTT-3'

8

9

## 10 Pharmacological inhibitors

11 Stock solutions of pharmacological inhibitors (all from Sigma-Aldrich®) were prepared in DMSO  
12 and added to embryos cultured in MBS 0,1X at the stages and concentrations and for the times  
13 shown in the following table. Cycloheximide treatment was performed by incubating embryos at  
14 stage 14 in MBS 0,1X containing 300µM cycloheximide two hours before live imaging.

15

Drugs	Source	Reference	Concentration in 0,1X MBS	Incubation time and stage
-------	--------	-----------	------------------------------	------------------------------

Axitinib	Sigma- Aldrich	AG-013736	50 $\mu$ M	From stage 12
CK-666		SML0006	100 $\mu$ M	
SMIFH2		S4826	50 $\mu$ M	
Cycloheximide		C7698	300 $\mu$ M	From stage 14

1

2

3 **Apoptosis detection:**

4 The CellEvent™ Caspase-3/7 Green Detection Reagent (Invitrogen™) was dissolved in DMSO  
5 and added to stage 14 control or cycloheximide-treated embryos in MBS 0,1x at 20 $\mu$ M final  
6 concentration.

7

8 ***In situ* hybridization and immunostaining**

9 Whole-mount chromogenic *In Situ* Hybridization (ISH) and whole-mount Fluorescent In Situ  
10 Hybridization (FISH) were performed as previously detailed (Castillo-Briceno and Kodjabachian,  
11 2014; Marchal et al., 2009). Embryos were fixed in MEMFA (0.1 M MOPS pH 7.4, 2 mM MgSO<sub>4</sub>,  
12 1 mM EGTA, 3.7% v/v formaldehyde) 1h30 at room temperature or overnight at 4 °C then  
13 dehydrated o/n in 100% methanol at -20 °C. For FISH on section, embryos were fixed in  
14 MEMFA, stored in methanol o/n at -20 °C, rehydrated in PBT (PBS + Tween 0.1% v/v), treated  
15 with triethanolamine 100mM and acetic anhydride, incubated in increasing sucrose concentrations,  
16 embedded in OCT (VWR Chemicals), cut in 12  $\mu$ m-thick cryosections and stored at -80°C. Before  
17 hybridization, embryos were rehydrated in PBT (PBS+0.1% Tween20), treated with Proteinase K  
18 (8 min at 2  $\mu$ g.ml<sup>-1</sup>), then, for FISH, the endogenous peroxydase activity was blocked by  
19 incubation with H<sub>2</sub>O<sub>2</sub> 3% in PBS for 20 min. For single staining, RNA probes were labelled with  
20 digoxigenin-dUTP (Roche). For double staining, various combinations of digoxigenin/fluorescein-  
21 labeled riboprobes were used. For each hybridization, the following amounts of riboprobes were  
22 used:  *$\alpha$ -tubulin* 1ng; *v1a* 40 ng; *foxj1* 100ng; *kit* 200ng; *scf-L* 100ng to 300ng for embryos at stage

1 11-16 and stage 19-20, respectively. Hybridization was performed overnight at 60 °C. After  
 2 hybridization, the embryos were washed at increasing stringency in SSC/0.1% CHAPS, rinsed  
 3 extensively in MABX (Maleic Acid Buffered solution +0.1% Triton X), then the digoxigenin-  
 4 labelled probe was revealed through incubation with a sheep anti-DIG antibody conjugated to HRP  
 5 (POD) (Roche, 1:500). On the third day, embryos were extensively washed in MABX, then  
 6 staining was revealed using Tyramide Signal Amplification—TSA™ Plus Cyanine  
 7 3/5/Fluorescein System (PerkinElmer®). This reaction was then blocked in a bath of 2% H2O2 for  
 8 20 min.

9 Following FISH labeling, immunostaining was performed by incubating the embryos in MABX-  
 10 BR2%, 15% FBS with the antibodies listed in the following table. After extensive washes in  
 11 MABX, embryos were flattened by cutting along the antero-posterior axis and mounted in Mowiol  
 12 (Sigma-Aldrich) for confocal imaging.

<b>Antibody</b>	<b>Species</b>	<b>Source</b>	<b>Dilution</b>
ZO1-TJP1	Mouse IgG1	Thermo Scientific	1:200
GFP	Chicken	Aves Labs	1:500
RFP	Rat monoclonal IgG2a	Chromotek	1:500
Alexa Fluor 568 anti-rat	Goat	Molecular	1:500
Alexa Fluor 488 anti-chicken	Goat	Probes	1:500
Alexa Fluor 647 anti-mouse IgG1	goat		1:800

13

14

15 **Confocal and electron microscopy**

1 To limit the movement of the embryo during live imaging, control or treated stage 14-15 embryos  
2 were embedded in 0,8% LMP agar in 0,1X MBS within a small chamber made with two coverslips  
3 and silicon grease. Time-lapse imaging was done at 23°C starting at stage 14-15 and for a duration  
4 of 2 to 8 hours on a Nikon Roper Spinning-disk Eclipse Ti inverted microscope using a  
5 20X\_objective (for apoptosis recording), or 40X/60X\_1.25 N.A water-immersion objective (for all  
6 the other experiments). Image acquisition was performed with the Meta-Morph software. 20µm-  
7 deep Z sections were acquired every 0,5 to 2min in 0,5 to 0,7µm steps, averaging 2. To compensate  
8 for the fluorescence intensity variations across different injected embryos, the laser power was  
9 adjusted for each experiment. Excitation wavelengths were 488nm, 561nm and 445nm for GFP-  
10 and RFP- tagged protein and for blue-tagged MO, respectively.

11 Fixed whole-embryos and sections were examined on Zeiss LSM 510 and 880 confocal  
12 microscopes. Four-color confocal Z-series images were acquired using sequential laser excitation,  
13 converted into single plane projection and analysed using ImageJ/FIJI software (see image analysis  
14 section).

15 For Scanning Electron Microscopy (SEM), stage 27 control or treated embryos were fixed for 4h in  
16 3% glutaraldehyde in 0.1 M phosphate buffer pH 7.4 (19 mL monosodium phosphate 0.2 M and  
17 81 mL disodium phosphate 0.2 M), washed in phosphate buffer and filtered bi-distilled water,  
18 progressively dehydrated in ethanol at 25%, 50%, and 70% for 30 min each time, then stored in  
19 fresh ethanol 70% at 4 °C o/n. Embryos were further dehydrated with vigorous agitation once in  
20 90% ethanol, and twice in 100% ethanol, for 30 min each, then subjected to CO<sub>2</sub> critical point  
21 desiccation (CPD030, Balzers) at 40 °C and 75-80 bars. Finally, samples were sputter-coated with  
22 gold (vacuum  $1 \times 10^{-12}$  Torr, beam energy 3–4 keV) and stuck on the support with conductive  
23 glue for immediate SEM digital imaging (FEI TENEO) of the skin epidermis.

24

## 25 **Image analysis**

26 All images were processed with the imageJ/Fiji free software.

1 Z-stacks from confocal video microscopy were converted into single plane projection by maximum  
2 intensity or sum intensity projection. Each channel was processed separately with the optimized z-  
3 section corresponding to the outer-/inner-layer cell staining. All visible MCCs were manually  
4 tracked with the 'manual tracking' plugin.

5 To overcome the loss of focus, artefactual movements and tissue deformation events, which made  
6 the detailed analysis of cell migration and their path tracking impossible, a semi-automatic video  
7 refocusing and stabilization procedure was implemented.

8 For each video and for each frame, one user-defined junction was tracked manually using the  
9 "Manual Tracking" Fiji plugin, resulting in a set of coordinates of the tracked junction throughout  
10 the whole video. This was then passed to a homemade Python script  
11 ([https://github.com/fabda/mcc\\_paper](https://github.com/fabda/mcc_paper)), which first corrected the coordinates through a 1-  
12 dimensional Gaussian filter with sigma=10 to avoid manual tracking artifacts and then quantified  
13 the horizontal and vertical drifts between two consecutive frames, using this value to refocus the  
14 image by shifting it in the opposite horizontal and vertical direction. A stabilization procedure was  
15 then applied to the refocused videos by using the Lucas-Kanade algorithm (Lucas, 1981)  
16 implemented into the "Image Stabilizer" Fiji plugin  
17 ([http://www.cs.cmu.edu/~kangli/code/Image\\_Stabilizer.html](http://www.cs.cmu.edu/~kangli/code/Image_Stabilizer.html)) used with default parameters (see  
18 also movie S9).

19 For each refocused and stabilized video, MCC centroids were manually tracked using the "Manual  
20 Tracking" Fiji plugin and their position corrected using a one-dimensional Gaussian filter  
21 (sigma=10). A set of "behavioral descriptors" were then calculated to help quantify individual cell  
22 movements and their interactions throughout a whole movie using a homemade Python script  
23 ([https://github.com/fabda/mcc\\_paper](https://github.com/fabda/mcc_paper)).

24 For every MCC and at every frame the euclidean distance of the centroids between two  
25 consecutive frames was calculated as well as the cumulative euclidean distance from the first  
26 frame. The instant speed was defined as the difference of the cumulative sum of the euclidean



1 distances between the centroid positions at two consecutive time points divided by the elapsed  
2 time.

3 These values were converted from pixel/frame to  $\mu\text{m/s}$  using the corresponding video acquisition  
4 parameter. We also calculated the orientation (in degrees) of the vector made by the MCC centroid  
5 and the origin of the coordinate system as the arctangent of the centroid position converted in  
6 degrees; the orientation in degree of the vector made by the MCC centroids every five consecutive  
7 frames and the origin of the coordinate system as the arctangent of the difference between centroid  
8 positions converted into degrees and cardinal directions.

9 Cell contact events were estimated by counting the time between the first and the last non-  
10 ambiguous contact time points. Cell contacts already established at the beginning of filming or  
11 persisting beyond its end were excluded from quantification.

12 To characterize the migratory path of MCCs relative to outer-layer cell junctions the following  
13 criteria were applied: MCCs emit protrusions in correspondence of outer-layer cells junctions;  
14 overlap between MCC shape and outer-layer cells junctions; correlation between direction of MCC  
15 migration and orientation of the outer-layer cells junctions. Cells already engaged in radial  
16 intercalation with permanent contact with vertices and ambiguous cases were removed from  
17 quantification.

18 Analysis of the apical-basal global cell shape was done through maximum intensity projections of  
19 resliced z-stacks following X,Z and Y,Z orientations with  $0,5\mu\text{m}$  interval from images at the  
20 indicated time point. Analysis of Scf-GFP/ZO-1RFP signal localization was done on resliced z-  
21 stacks from z-series at  $0.2\mu\text{m}$  intervals, taken along chosen intercellular junctions. 3D-projection of  
22 intercalating MCCs probing junctions and vertices was made using the 'clear volume' plugin.

23 To check for the depletion of Scf-GFP protein by a blue-fluorescent tagged version of ATG-*scf*-  
24 *L/S*-MO in live we proceeded as follows: mRNAs coding for Scf-GFP and mRFP were co-injected  
25 in the two animal ventral blastomeres at stage 8-cell stage, then blue-tagged ATG-*scf*-*L/S*-MO was

1 injected in two of the four animal ventral blastomeres at 16-cell stage. GFP, RFP and blue  
2 fluorescence were recorded at stage 16.

3 Images from fixed whole embryos and sections obtained with 510 and 880 LSM confocal  
4 microscopes were converted into single plane projection by maximum intensity projections. To  
5 calculate MCC and ionocyte mutual contacts and order indexes, as well as the relation of MCCs to  
6 vertices and their intercalation, the outlines of individual *α-tubulin*- or *v1a*-positive cells were  
7 manually drawn from maximum intensity projections of 20X 450x450μm images using Wacom®  
8 Intuos Pro graphic tablet and FIJI 'ROI manager' tool. Mutual contacts and overlapping to ZO-1-  
9 positive vertices were manually defined. MCCs were considered intercalated when their apical  
10 surface was clearly outlined by a ZO-1 signal. Ambiguous cases were classified as 'non defined'  
11 (nd). To calculate the Order Index, cell areas and centroids were defined and the data processed as  
12 described in the section 'Mathematical Modelling'.

13

#### 14 **Western blots**

15 Animal caps were obtained by manual dissection from stage 10 embryo in 1X MBS and kept in  
16 0,5X MBS until matched control embryos reached stage 17-18, then snap-frozen in liquid nitrogen  
17 and stored at -80°C or immediately lysed by boiling for 5min in 50mM Tris-HCl (pH 7.5), 2% w/v  
18 SDS, 1mM DTT. To detect the ScfECDw/oEx6-FLAG protein, 20 injected animal caps were  
19 incubated o/n in 400μl 0,5xMBS. After recovery, the supernatant was concentrated to 40μl with  
20 the Pierce Concentrator PES 10k MWCO system, then stored at -80°C. After addition of 5x  
21 Bromophenol blue/Glycerol, samples were loaded on Acrylamide PAGE gels and run using the  
22 Hoefer™ Mighty Small™ II Mini system with Tris/Glycine/SDS buffer. Transfer to nitrocellulose  
23 membranes was performed in Tris/Glycine/Ethanol buffer using the Hoefer™ TE22 Mini Tank  
24 Blotting Unit. Membranes were rinsed with water, stained with Ponceau Red, washed three times  
25 for 10min each time in TBS-T (20mM Tris-HCl, 150mM NaCl, pH 7.5, 0.05% v/v), blocked for 1h  
26 in TBS-T+5% (w/v) non-fat dry milk, then incubated with a rabbit anti-GFP antibody (Torrey

1 Pines Biolabs, TP401, 1:1000 in TBS-T + non-fat dry milk) or a rat anti-FLAG antibody  
2 (Sigma-Aldrich, clone 6F7, 1:1000 in TBS-T + non-fat dry milk) overnight at 4°C. After 4  
3 washes (15min each) in TBS-T, membranes were incubated for 1h at room temperature with a goat  
4 anti-rabbit-HRP-conjugated antibody or a donkey anti-goat-HRP-conjugated antibody (Invitrogen,  
5 1:5000 in TBS-T + non-fat dry milk) then washed four times (15min each) in TBS-T. The signal  
6 obtained from enhanced chemiluminescence (Western lightning ECL Pro, Perkin Elmer) was  
7 detected with MyECL Imager (Life Technologies).

8

## 9 **PCR**

10 Whole embryos or animal caps were snap frozen at different stages and stored at -80 °C. Total  
11 RNAs were purified with the Qiagen RNeasy kit (Qiagen). RT reactions were carried out using  
12 iScript™ Reverse Transcription Supermix (BIO-RAD). PCRs were carried out with GoTaq® G2  
13 Flexi DNA Polymerase (Promega). Amplification of exon 6 was performed using the primers scf-  
14 L-ex6for: 5'-GGACCTTGACCATGCCTGC-3 and scf-L-ex6rev : 5'-  
15 ATTCCTCTGCCAGGTCTGGA-3 for *scf-L* ; scf-S-ex6for: 5'-TCGGCCTCTTCTTTGTATCG-  
16 3' and scf-S-ex6rev: 5'-GTACAGTACAGTGTTAATAG-3' for *scf-S*. To check for the efficiency  
17 of *kit-S-e2i2spl-MO*, the following primers were used: check-splMOKitS1for: 5'-  
18 ACCATGAACTGGACTTACCTGTGG-3' and check-splMOKitLSrev: 5'-  
19 CTCAATGTCCCACTCTGATTTCC-3'. To check for the efficiency of *kit-L-e2i2spl-MO* the  
20 following primers were used: check-splMOKitL1for: 5'-TCCTTTACGATCACAATGAGCTGG-  
21 3' and check-splMOKitL1rev: 5'-TTACATGAATAGAGAATGTGCTGC-3'.

22

## 23 **Statistical analysis**

24 Graphs were done with Graphpad Prism8 software as well as statistical analysis when indicated  
25 using student t-test. Time of contact among MCCs was compared using unpaired parametric

- 1 student t-test and junction following behaviour by Fisher test. The number of samples analysed in
- 2 all graphs is presented in Table S1.
- 3

## 1 **Mathematical modelling**

### 2 *Geometry*

3 The outer layer, considered as a static canvas that can influence the behaviour of two-dimensional  $N_{cells}$   
4 MCCs (red disks), is extracted from the segmented image of a ZO-1 IF of a stage-14 control embryo. The  
5 number of MCCs injected into simulations was kept constant and was within the range of MCC numbers  
6 recorded at stage 14. The system dynamics was modelled using the effective energies associated with the  
7 two mechanisms of MCC mutual repulsion and affinity for outer layer intercellular junctions. The evolution  
8 from a random initial state to the final state was guided by an algorithm imposing a progressive decrease of  
9 the system total energy. Mathematical expressions for the repulsion and affinity energies were chosen in  
10 correspondence with the qualitative behaviours observed in experiments.

11

### 12 *Energies*

13 To account for mutual repulsion, a pair-repulsion energy with an exponential decay on a typical length scale  
14 equal to the MCC radius  $r_{cell}$  was chosen. To prevent the overlap among neighbouring MCCs, the repulsion  
15 energy was supplemented with a hard-core corresponding to the minimal allowed distance between two  
16 cells. Based on experimental observations showing that MCC overlap does not exceed half their size, the  
17 hard core was defined as  $r_{cell}$ . To ensure that two nearby MCCs undergo a local energy gradient and to  
18 prevent aberrant configurations where two MCCs remain stuck with a distance smaller than  $r_{cell}$ , the hard-  
19 core energy decreases between  $r_{ij} = 0$  and  $r_{cell}$ .

20 Thus, the pair-repulsion energy reads  $E_{rep}(r_{ij}) = \left\{ \begin{array}{l} k_{rep}e^{-r_{ij}/r_{cell}} \text{ if } r_{ij} \geq r_{cell} \\ A(2 - r_{ij}/r_{cell}) \text{ if } r_{ij} < r_{cell} \end{array} \right\}$ , where  $r_{ij}$  is the distance

21 between the centers of MCCs  $i$  and  $j$ ,  $r_{cell}$  is the MCC radius and  $k_{rep}$  the repulsion constant (positive). The  
22 constant  $A$  of the hard-core energy is chosen large ( $A = 100$ ), so that the probability for an MCC to be at a  
23 distance lower than  $r_{cell}$  from another MCC is very small ( $e^{-100} \simeq 10^{-44}$ ).

24

1 Affinity for junctions was accounted for with a negative energy term proportional to the overlap between  
2 MCCs and outer-layer junctions, calculated as the total pixel intensity of the junction network covered by  
3 MCCs. The affinity energy of a cell  $i$  is then  $E_{aff}(i) = -k_{aff} \sum_{(x,y) \in \Omega_i} \sigma_{x,y}$  where  $k_{aff}$  is the affinity  
4 constant (positive),  $\Omega_i$  is the set of pixel positions covered by the MCC  $i$  and  $\sigma_{x,y}$  is the value of the pixel  
5 at the position  $(x, y)$  of the epithelial canvas. The minus sign ensures that the energy decreases when the  
6 total pixel intensity covered by the MCC  $i$  increases.

7 To build the epithelial canvas used to calculate the affinity energy, a Gaussian blur of a size equal to a MCC  
8 diameter was applied to the segmented epithelium matrix. This considerably fastens the simulations by  
9 directing MCCs towards junctions thanks to an energy gradient, without changing the final state. Note that  
10 this could also reflect that regions lining junctions are mechanically more favourable, as the height of the  
11 epithelial cells is minimal at junctions.

12

### 13 *Dynamics*

14 The total energy of the system is the sum of the repulsion and affinity energies of all the MCCs  $E_{tot} =$   
15  $\sum_i E_{aff}(i) + \sum_{i \neq j} E_{rep}(r_{ij})$  where  $i$  and  $j$  refer to MCCs. Monte-Carlo simulations of the system were  
16 performed with a Metropolis algorithm to impose the energy minimization constraint. At each time step of  
17 the simulation a random displacement was computed and attributed to each MCC. This displacement  
18 corresponds to a diffusive motion with a diffusion constant yielding typical jumps of one-tenth of a cell-  
19 radius distance. Moves were accepted or rejected following a Metropolis algorithm depending on the value  
20 of  $\Delta E_{tot} = E_{tot}(after) - E_{tot}(before)$ , the difference between the system total energy after and before  
21 each move. If the total energy has decreased ( $\Delta E_{tot} < 0$ ) the move is accepted. If the total energy has  
22 increased ( $\Delta E_{tot} > 0$ ) the move is rejected in most cases but has a nonzero probability to be accepted if the  
23 increase is of the order of the thermal energy  $k_B T$  ( $k_B$  is the Boltzmann constant and  $T$  the temperature,  
24 both set to 1 in our simulations), with a probability given by  $\exp(-\Delta E_{tot}/(k_B T))$ . The virtual-time of the

1 simulation is increased by one after  $N_{cells}$  such dynamical steps (one Monte-Carlo time step). The  
 2 simulation was run for a Monte-Carlo time sufficient for the system to reach a stationary final state.  
 3 Depending on the respective weight of the energy constants  $k_{rep}$  and  $k_{aff}$  final states with different  
 4 qualitative patterning of the MCCs were generated. Let alpha be the ratio between energy constants,  $\alpha =$   
 5  $k_{rep}/k_{aff}$ . When  $\alpha \gtrsim 10^7$ , the total energy of the system  $E_{tot}$  is dominated by the repulsion energy. When  
 6  $\alpha \lesssim 10^3$ , the total energy of the system is dominated by the affinity energy.

7

### 8 *Quantification*

9 In order to have a more quantitative description of the system state, two indices were defined, to quantify  
 10 the MCC spatial order and their localization at junctions, respectively.

11 The order index  $I_o$  was computed from Delaunay tessellation of MCC positions. The position of each MCC  
 12 is computed as a single point, located at its centroid. Systems with different MCC densities  $\rho_{cells}$  (defined  
 13 as the ratio between the total area occupied by MCCs and the available area of the epithelium) were  
 14 distinguished, since the number of possible final MCC organisations increases with the available space.

15 The order index  $I_o$  is a measure of the narrowness of the distribution of areas  $A_{Del}$  of Delaunay triangles  
 16 while accounting for the available space via  $\rho_{cells}$ :  $I_o = (1 - \rho_{cells}) \left(1 - \frac{sd(A_{Del})}{\text{mean}(A_{Del})}\right)$ .

17  $I_o$  is minimal when the standard deviation of Delaunay areas is of the order of its mean and is large when  
 18 the standard deviation is small compared to the mean. Therefore  $I_o$  is maximal when MCCs are perfectly  
 19 ordered and minimal when they are most disordered. Note that this definition of order was used both for  
 20 simulations and experimental data.

21 The covering index  $I_c$ , representing the extent of overlapping between outer-layer junctions and MCCs, was  
 22 computed as the total pixel intensity of the epithelium covered by MCCs,  $\sum_i \sum_{(x,y) \in \Omega_i} \sigma_{x,y}$ , minus a noise  
 23 term. This noise term, corresponding to the background value of covered pixels in a purely random  
 24 configuration of MCCs, was computed by averaging the pixels  $\sigma_{x,y}$  of the whole epithelium and multiplying  
 25 this value by the cell surface  $i_c^{noise} = \text{mean}(\sigma_{x,y}) \pi r_{cell}^2$ . The covering index was normalized by a term

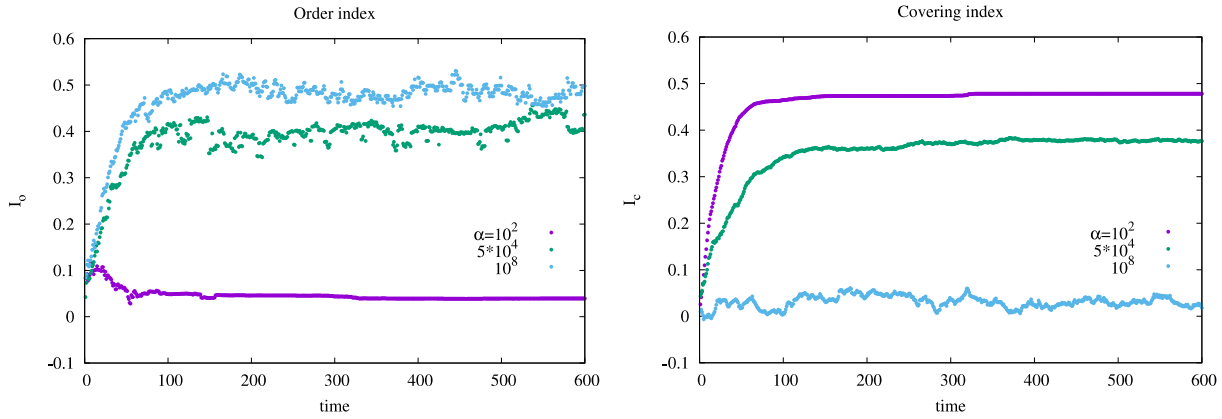
1 accounting for the maximal possible extent of overlapping of junctions by one MCC. This was obtained by  
 2 finding the maximal possible overlapping value for a cell  $C$  scanning among all possible positions  $(x_C, y_C)$

3 of its center  $i_c^{max} = \max_{(x_C, y_C)} \sum_{(x,y) \in \Omega_C} \sigma_{x,y}$ .

4 Thus the covering index is  $I_C = \frac{N_{cells}^{-1} \sum_i \sum_{(x,y) \in \Omega_i} \sigma_{x,y} - i_c^{noise}}{i_c^{max} - i_c^{noise}}$ .

5 The index is thus minimal when the overlap of MCCs with junctions does not exceed the overlap obtained  
 6 from a random scattering of MCCs. It is maximal when the overlap is the highest possible.

7

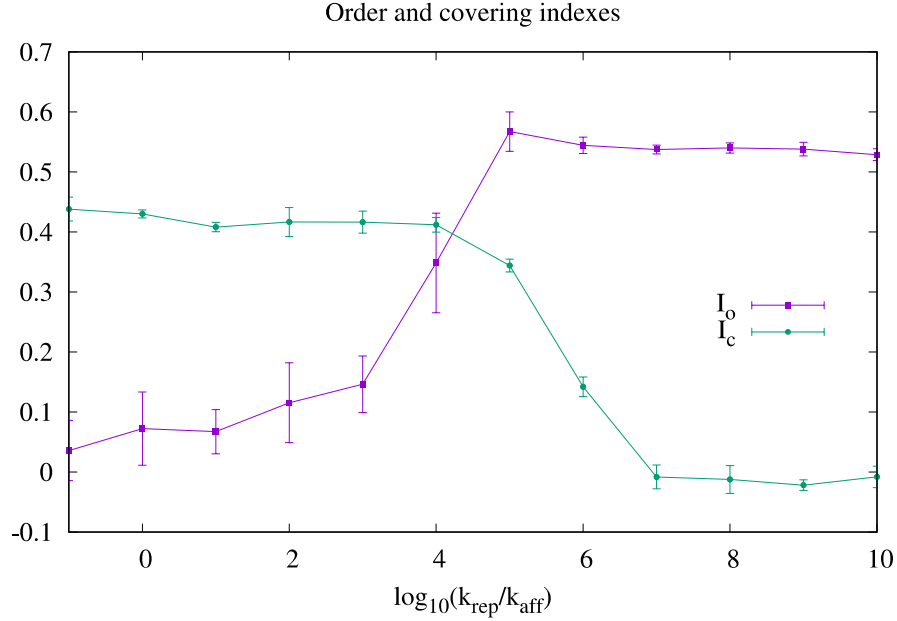


8

9 **Order and covering index evolution with time for different values of  $\alpha = k_{rep}/k_{aff}$ .**

10 In the repulsion dominated regime ( $\alpha=10^8$ ) MCCs evolve toward a strict ordering regardless of  
 11 junctions hence the order index is large while the affinity index is small. In the affinity-dominated  
 12 regime ( $\alpha=10^2$ ), MCCs finally localize under junctions/vertices regardless of other MCCs, yielding  
 13 a large affinity index while the order index remains small. In the intermediate regime ( $\alpha=5 \times 10^4$ )  
 14 the two indices take intermediate values.





1

2 **Final values of order and affinity indices for different simulation conditions.**

3 The points represent mean values computed over five simulations and the error-bars represent the  
 4 standard deviation.

5

6 *Clonal simulations*

7 In clonal simulations, where patches of the epithelium lack either or both repulsion and affinity, the set of  
 8 clone regions was called  $Z$ , and the new interaction constants  $k_{rep}^Z$  and  $k_{aff}^Z$ . The energies depending on the  
 9 position of the MCCs (inside or outside  $Z$ ) were thus modified.

10 The repulsion energy reads

11 
$$E_{rep}(r_{ij}) = \left\{ \begin{array}{l} k_{rep} \exp(-r_{ij}/r_{cell}) \text{ if } (i, j) \notin Z \\ k_{rep}^Z \exp(-r_{ij}/r_{cell}) \text{ if } (i, j) \in Z \\ \sqrt{k_{rep} k_{rep}^Z} \exp(-r_{ij}/r_{cell}) \text{ if } (i \in Z \text{ and } j \notin Z) \text{ or } (j \in Z \text{ and } i \notin Z) \end{array} \right\}$$

12 for  $r_{ij} \geq r_{cell}$  (the hard-core energy of  $E_{rep}(r_{ij})$  in section *Energies* is unchanged when  $r_{ij} < r_{cell}$ ), and the

13 affinity energy reads  $E_{aff}(i) = -\sum_{(x,y) \in \Omega_i} k_{aff}(x,y) \sigma_{x,y}$  with  $k_{aff}(x,y) = \begin{cases} k_{aff} & \text{outside } Z \\ k_{aff}^Z & \text{inside } Z \end{cases}$

1 **Movies**

2 **Movie 1:** MCCs move actively within the plane of the ectoderm inner layer.

3 **Movie 2:** Dynamic behaviour of the actin cytoskeleton in immature MCCs.

4 **Movie 3:** In a simulation dominated by MCC affinity for outer-layer junctions, MCCs home to  
5 vertices, but do not disperse properly.

6 **Movie 4:** In a simulation dominated by MCC mutual repulsion, MCCs disperse properly, but do not  
7 home to vertices.

8 **Movie 5:** In a simulation where MCC mutual repulsion and affinity for outer-layer junctions are  
9 balanced, MCCs disperse and home correctly to vertices.

10 **Movie 6:** When MCCs come into contact via lamellipodia-like structures, they withdraw from each  
11 other. *α-tub::GFP* transgenic MCCs within the inner epidermal layer are tracked relative to mRFP-  
12 injected outer-layer cells. Red and dark blue dots and lines show the position and migration path of  
13 cell n°1 and n°2, respectively (see Figure 3A). Arrows point contact between cell n°1 and n°2  
14 (white) or cell n°1 and n°3 (red), which are followed by changes in the direction of cell migration.

15 **Movie 7:** MCCs preferentially move along outer-layer intercellular junctions.

16 **Movie 8:** MCC mutual repulsion is strongly decreased in axitinib-treated embryos.

17 **Movie 9:** MCC mutual repulsion is strongly decreased in *kit* MO-injected embryos.

18 **Movie 10:** MCC mutual repulsion is strongly decreased in *scf* MO-injected embryos.

19 **Movie 11:** In *scf* mosaic morphants, MCCs leave Scf-depleted regions without following outer-  
20 layer intercellular junctions. The centroid of the tracked MCC is marked 1, the initial position within  
21 the clone is marked 2. The mark 3 points an MCC, which remains associated to the border but never  
22 enters the Scf-depleted region.

23 **Movie 12:** Mathematical modelling predicts that MCCs tend to accumulate at boundaries between  
24 regions devoid of both repulsion and affinity, and in normal regions.

25 **Movie 13:** When only repulsion is suppressed in clones surrounded by normal regions, MCCs  
26 remain within the clones but do not disperse homogeneously.

1 **Movie 14:** When only affinity is suppressed in clones surrounded by normal regions, MCCs disperse  
2 homogeneously within the clones but do not preferentially associate to vertices.

3 **Movie 15:** MCCs overexpressing Scf-GFP form stable aggregates.

4 **Movie S1:** Fluorescent labelling of activated caspases 3 and 7 reveals no apoptotic cell death within  
5 the ectoderm.

6 **Movie S2:** When MCCs come into contact via large cell protrusions, they withdraw from each other.

7 **Movie S3:** Tilted 3D projection from movie 7 showing MCC apically-directed protrusions  
8 occurring in correspondence of outer-layer intercellular junctions.

9 **Movie S4:** MCC mutual repulsion is strongly decreased in CK-666-treated embryos.

10 **Movie S5:** CK-666-treated embryos strongly decreased MCC mutual repulsion and increase the  
11 occurrence of spiky filopodia-like structures over broader, lamellipodia-like ones.

12 **Movie S6:** The colliding MCCs of control embryos separate through mutual repulsion. A large  
13 cohort of LifeActGFP-positive MCCs with low mosaicism (left panel) was tracked for two hours  
14 (right panel) showing that colliding MCCs move away from each other and change their direction  
15 of migration. This behaviour was visible for 30 out of 36 contacts among 18 cells over a period of  
16 2 hours.

17 **Movie S7:** MCCs move as pairs or groups in axitinib-treated embryos. A large cohort of  
18 LifeActGFP-positive MCCs with low mosaicism (left panel) was tracked for two hours (right  
19 panel), showing that Kit-deficient MCCs failed to separate and move as pairs or groups. Only 10  
20 events of repulsion were visible out of 22 observed contacts among 18 cells over a period of 2  
21 hours.

22 **Movie S8:** MCC mutual repulsion was strongly decreased in dn-Kit-injected embryos.

23 **Movie S9:** Example of a movie subjected to our refocusing and stabilisation procedures (see STAR  
24 Methods).

25

26

27 **Legends to supplementary figures**

1 **Figure S1. Cell death and cell fate reversal are unlikely to play a major role in establishing**  
2 **the MCC regular pattern.**

3 **A:** Stage 15 mRFP-injected embryos were incubated with the CellEvent<sup>TM</sup> Caspase-3/7 Green  
4 Detection Reagent to detect activation of the executioner caspases 3 and 7 in presence of 300 $\mu$ M  
5 cycloheximide as an apoptosis inducer (Trindade et al., Development, 2003) or in DMSO as a  
6 control and filmed for 3hrs (right). Apoptotic cells (green) are found in the epidermis of  
7 cycloheximide-treated embryos (left), but not in control ones, even after prolonged observation  
8 (right). Embryos were injected with mRFP (red) to allow a better visualisation of cell outlines.  
9 Scale bar is 20 $\mu$ m. **B:**  *$\alpha$ -tub::RFP* transgenic embryos were fixed at different developmental  
10 stages and subjected to IF with an anti-RFP antibody (red, top row) and FISH against  *$\alpha$ -tubulin*  
11 (green, middle row). Merging the two channels (bottom row) shows few  *$\alpha$ -tub*-positive/RFP-  
12 negative cells (white arrowheads), but fails to uncover any RFP-positive/ *$\alpha$ -tub*-negative cells.  
13 DAPI staining (blue, bottom row) allows the identification of nuclei. Scale bar is 20 $\mu$ m. **C:** Venn  
14 diagrams showing the overlap of the GFP- and RFP-positive cell populations at different  
15 developmental stages.

16

17 **Figure S2. Role of actin cytoskeleton in MCC patterning.**

18 **A:** Frames from movie S2 show LifeActGFP-expressing MCCs establishing a transient contact via  
19 lamellipodia-like structures (red arrowheads) that are subsequently retracted. The yellow  
20 arrowhead points to an example of thinner, filopodia-like structures. Scale bar is 20 $\mu$ m. **B:** A tilted  
21 3D projection from movie S3 showing that apically directed protrusion (white arrowheads)  
22 correspond to outer-layer cell junctions. **C:** Quantification of MCC intercalation at stage 19 and  
23 stage 25 in control embryos and embryos treated with CK-666 or SMIFH2. **D:** Graph showing the  
24 instant speed of 40 LifeActGFP-expressing MCCs from CK-666 treated embryos, recorded over a  
25 maximum of 4 hours. Dotted light-grey lines: instant speeds of individual MCCs. Black line:  
26 mean instant speed of the 40 MCCs; the dark grey area represents the standard error. **E:** Initial and

1 final frame from movie S4 showing three LifeActGFP-expressing MCCs, which fail to separate  
2 over the course of two hours in a CK-666-treated embryo. Scale bar is 20 $\mu$ m. **F:** Graph showing  
3 the instant speed of two MCCs (1 in light blue, and 2 in red) from movie S4. **G:** Graph plotting the  
4 cumulative path distances covered by MCCs from control and CK-666-treated embryos. **H:** Graph  
5 plotting the displacements (based on initial and final positions) of MCCs from control and CK-  
6 666-treated embryos. **I:** Frames from movie S5 show that MCCs in CK-666 treated embryos show  
7 decreased mutual repulsion; **I'**: A close-up on the outlined area from I, to highlight filopodia-like  
8 structures (white arrowheads).

9

### 10 **Figure S3. Expression of *kit* and *scf* in *Xenopus* epidermis.**

11 **A:** Whole-mount ISH with a probe against *kit-L* and *kit-S* shows expression in scattered non-  
12 neural ectoderm cells at stages 10 to 26. Anterior is to the top for stages 10 and 14, to the left for  
13 stages 18 and 26. **B:** Whole-mount ISH with a probe against *scf-L* reveals expression throughout  
14 the ectoderm from stages 14 to 22. Anterior to the left. **B':** FISH on a sectioned embryo at stage  
15 25 shows stronger *scf-L* expression (red) in the ectoderm outer layer. DAPI (blue) stains the  
16 nuclei. **C:** RT-PCR on total RNA from animal caps at different developmental stages with primers  
17 encompassing the exon6 region of *scf-L* (left) or *scf-S* (right) amplifies a 141bp band, only for *scf-*  
18 *L*, which is present at all developmental stages analysed. Plasmids containing the full-length  
19 cDNA of either *scf-L* (pCMV-Sport6-SCF-L) or *scf-S* (pCMV-Sport6-SCF-S) were used as  
20 positive controls for amplification. Molecular weight marker is GeneRuler 100bp Plus DNA  
21 Ladder.

22

23 **Figure S4. Inhibition of Kit signalling by axitinib treatment does not affect MCC motility. A:**  
24 Graph showing the instant speed of 67 LifeActGFP-expressing MCCs recorded over a  
25 maximum of 4 hours in axitinib-treated embryos. Dotted light-grey lines: instant speeds of  
26 individual MCCs. Black line: mean instant speed of the 67 MCCs; the dark grey area represents

1 the standard error. **B:** Graph showing the instant speed of two MCCs from movie S7. **C:** Frames  
2 from movie S6 showing LifeActGFP-expressing MCCs from a control embryo. **D:** Tracking of  
3 MCCs from movie S6, showing their paths over a duration of 2 hours. **E:** Graph showing the  
4 initial and the final positions of the tracked MCCs from movie S6. **F:** Frames from movie S7  
5 showing LifeActGFP-expressing MCCs from an axitinib-treated embryo. **G:** Tracking of MCCs  
6 from movie S7, showing their paths over a duration of 2 hours. **H:** Graph showing the initial and  
7 the final positions of the tracked MCCs from movie S7. The thick coloured arrows correspond to  
8 MCCs that did not separate during their displacement. **I:** Graph plotting the cumulative path  
9 distances covered by MCCs from control and axitinib-treated embryos. **J:** Graph plotting the  
10 displacements (based on initial and final positions) of MCCs from control and axitinib-treated  
11 embryos.

12  
13 **Figure S5. Expression of dominant-negative Kit affects MCC distribution.**

14 **A, B:** Whole-mount ISH with a probe against  $\alpha$ -*tubulin* shows a normal MCC distribution in stage  
15 27 control embryos (**A**) and patterning irregularities in age-matched *dn-kit*-injected embryos (**B**).  
16 **A'** and **B'** are close-ups of **A** and **B** respectively. **C, D:** Whole-mount FISH with a probe against  
17  $\alpha$ -*tubulin* (white) in control (**C**) and *dn-kit*-injected (**D**) stage 27 embryos. mRNA coding for GFP  
18 (green) is used as a tracer for *dn-kit* mRNA, DAPI (blue) stains nuclei. Scale bar is 200 $\mu$ m. **C'** and  
19 **D'** are close-ups of **C** and **D**, respectively, showing the irregular clustering of MCCs in *dn-kit*-  
20 injected embryos. Scale bar is 20 $\mu$ m. **E, F:** Scanning electron microscopy images of control (**E**)  
21 and *dn-kit*-injected (**F**) stage 27 embryos. **E'** and **D'** are close-ups of **E** and **D**, respectively,  
22 showing that MCCs in *dn-kit*-injected embryos are irregularly clustered but do produce cilia. **G:**  
23 Frames from movie S8, showing that LifeActGFP-positive MCCs fail to separate properly in *dn*-  
24 *kit*-injected embryos. mRNA coding for RFP (red) serve as tracer for *dn-kit* mRNA. Scale bar is  
25 20 $\mu$ m.

26

1 **Figure S6. Characterisation of Morpholino Oligos against *kit-L* and *kit-S*.**

2 **A:** Morpholino Oligos against *kit-L*. **1)** Large font size underlined: *kit-L* exon 1; small font size:

3 5'UTR; small font size italic: intron 1; in red the stretch targeted by MO-ATG-*kit-L*. **2)** Large font

4 size underlined: *kit-L* exon 2; small font size italic: intron 2; in red the stretch targeted by MO-

5 splice-*kit-L*. **B:** Morpholino Oligos against *kit-S*. **1)** Large font size underlined: *kit-S* exon 1; small

6 font size: 5'UTR; small font size italic: intron 1; in red the stretch targeted by MO-ATG-*kit-S*. The

7 asterisk/arrowheads point to the seven bases mutated to generate MOres-*kit-S*. **2)** Large font size

8 underlined: *kit-S* exon 2; small font size italic: intron 2; in red the stretch targeted by MO-splice-

9 *kit-S*. **C:** Lysates from animal caps injected with mRNA coding for GFP and mRNA coding for a

10 C-terminally GFP-tagged dominant-negative form of *kit-S* alone or together with MO-ATG-*kit-*

11 *L+S* were subjected to Western blotting with an anti-GFP antibody. The red arrowhead points to a

12 GFP-positive band corresponding to the intracellular fragment generated by proteolytic cleavage

13 of the dn-Kit-GFP protein, which is lost in embryos co-injected with MO-ATG-*kit-L+S*. **D:** RT-

14 PCR on *kit-L* and *kit-S* to test the action of the splice-blocking MOs; a.c.: animal caps; w.e.: whole

15 embryos; 0.8% agarose/TAE gel. The injection of MO-splice-*kit-S* or MO-splice-*kit-L* results in a

16 decrease of the levels of *kit-S* and *kit-L* mRNAs, respectively. **E:**  $\alpha$ -*tub* FISH (green) and RFP IF

17 (red) on stage 25 embryos show, from left to right, normal MCC distribution in control embryos

18 and in embryos injected with mRNA coding for morpholino-resistant form MOres-Kit-S alone,

19 abnormal MCC clustering in embryos injected with MO-ATG-*kit-L+S*, and recovery of normal

20 MCC distribution in embryos co-injected with MO-ATG-*kit-L+S* and MOres-*kit-S* mRNA. In all

21 cases, mRNA for RFP was used as an injection tracer. Scale bar is 20 $\mu$ m. **F:**  $\alpha$ -*tub* FISH (green)

22 and ZO-1 IF (white) on control embryos (left panel) and embryos injected with either MO-ATG-

23 *kit-L+S* (middle panel) or MO-splice-*kit-L+S* (right panel) shows that both ATG- and splice-

24 targeting MOs lead to the same phenotype of irregularly distributed and clustered MCCs at stage

25 25. mRFP mRNA (red) was used as MO tracer. Scale bar is 20 $\mu$ m. The graph in **F'** shows a

26 quantification of the abnormal MCC clustering in MO-ATG-*kit-L+S* and MO-splice-*kit-L+S*

1 injected embryos. **G:** Graph showing the instant speed of 40 LifeActGFP-expressing MCCs  
2 in MO-ATG-*kit-L+S*-injected embryos, recorded over a maximum of 8 hours. Dotted light-grey  
3 lines: instant speeds of individual MCCs. Black line: mean instant speed of the 40 MCCs; the  
4 dark grey area represents the standard error.

5  
6 **Figure S7. Characterisation of Morpholino Oligos against *scf-L* and *scf-S*.**

7 **A:** Morpholino Oligos against *scf-L*. **1)** Large font size underlined: *scf-L* exon 1; small font size:  
8 5'UTR; small font size italic: intron 1; in red the stretch targeted by MO-ATG-*scf-L/S*. **2)** Large  
9 font size underlined: *scf-L* exon 2; small font size italic: intron 2; in red the stretch targeted by  
10 MO-splice-*scf-L*. **B:** Morpholino Oligos against *scf-S*. **1)** Large font size underlined: *scf-S* exon 1;  
11 small font size: 5'UTR; in red the stretch targeted by MO-ATG-*scf-L/S*. **C:** En face view of live  
12 outer-layer cells from a stage 18 embryo co-injected with mRNAs coding for Scf-GFP (green) and  
13 RFP (red), as well as a blue-tagged version of MO-ATG-*scf-L/S*. The Scf-GFP signal is lost from  
14 the MO-receiving cells, while the RFP signal is unchanged. Scale bar is 20µm. **D:** Lysates from  
15 animal caps injected with mRNA coding for GFP, Scf-GFP and Scf-GFP together with MO-ATG-  
16 *scf-L/S* were subjected to Western blotting with an anti-GFP antibody. Bands corresponding to the  
17 55kDa full-length Scf-GFP and to the 37kDa exon 6 proteolytic cleavage product (arrowheads)  
18 are absent from MO-ATG-*scf-L/S* injected embryos. **E:** Quantification of the MCC intercalation in  
19 control and MO-ATG-*scf-L/S*-injected embryos. **F:** *α-tub* FISH (green) and RFP (red) IF on  
20 control embryos (left panel) and embryos injected with either MO-ATG-*scf-L/S* (middle panel) or  
21 MO-splice-*scf-L* (right panel) shows that both ATG- and splice-targeting MOs lead to the same  
22 phenotype of irregularly distributed and clustered MCCs at stage 25. mRFP mRNA (red) was  
23 used as MO tracer. Scale bar is 20µm. **F'** shows a quantification of the abnormal MCC clustering  
24 in MO-splice-*scf-L/S*- and MO-ATG-*scf-L/S*-injected embryos. **G:** Graph showing the instant  
25 speed of 61 LifeActGFP-expressing MCCs in MO-ATG-*scf-L/S*-injected embryos, recorded over  
26 a maximum of 4 hours. Dotted light-grey lines: instant speeds of individual MCCs. Black line:



1 mean instant speed of the 61 MCCs; the dark grey area represents the standard error. **H:** IF  
2 against Acetylated-tubulin (green), ZO-1 (white) and RFP (red) on embryos injected with *mRFP*  
3 mRNA at 16-cell stage shows that MCCs do not accumulate at the boundaries of mRFP-  
4 expressing clones. Scale bar is 20µm.

## 5 **References**

- 6 Belin, B.J., Goins, L.M., and Mullins, R.D. (2014). Comparative analysis of  
7 tools for live cell imaging of actin network architecture. *Bioarchitecture* 4,  
8 189-202.
- 9 Benito-Gutierrez, E., Nake, C., Llovera, M., Comella, J.X., and Garcia-  
10 Fernandez, J. (2005). The single AmphiTrk receptor highlights increased  
11 complexity of neurotrophin signalling in vertebrates and suggests an early role  
12 in developing sensory neuroepidermal cells. *Development* 132, 2191-2202.
- 13 Brannan, C.I., Lyman, S.D., Williams, D.E., Eisenman, J., Anderson, D.M.,  
14 Cosman, D., Bedell, M.A., Jenkins, N.A., and Copeland, N.G. (1991). Steel-  
15 Dickie mutation encodes a c-kit ligand lacking transmembrane and cytoplasmic  
16 domains. *Proc Natl Acad Sci U S A* 88, 4671-4674.
- 17 Briggs, J.A., Weinreb, C., Wagner, D.E., Megason, S., Peshkin, L., Kirschner,  
18 M.W., and Klein, A.M. (2018). The dynamics of gene expression in vertebrate  
19 embryogenesis at single-cell resolution. *Science* 360.
- 20 Briscoe, J., and Small, S. (2015). Morphogen rules: design principles of  
21 gradient-mediated embryo patterning. *Development* 142, 3996-4009.
- 22 Castillo-Briceno, P., and Kodjabachian, L. (2014). *Xenopus* embryonic epidermis  
23 as a mucociliary cellular ecosystem to assess the effect of sex hormones in a  
24 non-reproductive context. *Front Zool* 11, 9.
- 25 Chung, M.I., Kwon, T., Tu, F., Brooks, E.R., Gupta, R., Meyer, M., Baker, J.C.,  
26 Marcotte, E.M., and Wallingford, J.B. (2014). Coordinated genomic control of  
27 ciliogenesis and cell movement by RFX2. *Elife* 3, e01439.
- 28 Cibois, M., Luxardi, G., Chevalier, B., Thome, V., Mercey, O., Zaragosi, L.E.,  
29 Barbry, P., Pasini, A., Marcet, B., and Kodjabachian, L. (2015). BMP signalling  
30 controls the construction of vertebrate mucociliary epithelia. *Development* 142,  
31 2352-2363.
- 32 Cibois, M., Scerbo, P., Thomé, V., Pasini, A. and Kodjabachian, L. (2014).  
33 Induction and Differentiation of the *Xenopus* Ciliated Embryonic Epidermis. In  
34 *Xenopus Development*, M.K.a.J.Z. Kubiak, ed. (Oxford: John Wiley & Sons, Inc).
- 35 Davidson, E.H. (2010). Emerging properties of animal gene regulatory networks.  
36 *Nature* 468, 911-920.
- 37 Davis, J.R., Huang, C.Y., Zanet, J., Harrison, S., Rosten, E., Cox, S., Soong,  
38 D.Y., Dunn, G.A., and Stramer, B.M. (2012). Emergence of embryonic pattern  
39 through contact inhibition of locomotion. *Development* 139, 4555-4560.
- 40 Deblandre, G.A., Wettstein, D.A., Koyano-Nakagawa, N., and Kintner, C. (1999).  
41 A two-step mechanism generates the spacing pattern of the ciliated cells in the  
42 skin of *Xenopus* embryos. *Development* 126, 4715-4728.
- 43 Flanagan, J.G., Chan, D.C., and Leder, P. (1991). Transmembrane form of the kit  
44 ligand growth factor is determined by alternative splicing and is missing in  
45 the *Sld* mutant. *Cell* 64, 1025-1035.
- 46 Fuerst, P.G., Koizumi, A., Masland, R.H., and Burgess, R.W. (2008). Neurite  
47 arborization and mosaic spacing in the mouse retina require DSCAM. *Nature* 451,  
48 470-474.

1 Galli-Resta, L., Novelli, E., and Viegi, A. (2002). Dynamic microtubule-  
2 dependent interactions position homotypic neurones in regular monolayered  
3 arrays during retinal development. *Development* 129, 3803-3814.

4 Goldman, D.C., Berg, L.K., Heinrich, M.C., and Christian, J.L. (2006).  
5 Ectodermally derived steel/stem cell factor functions non-cell autonomously  
6 during primitive erythropoiesis in *Xenopus*. *Blood* 107, 3114-3121.

7 Gommerman, J.L., Sittaro, D., Klebasz, N.Z., Williams, D.A., and Berger, S.A.  
8 (2000). Differential stimulation of c-Kit mutants by membrane-bound and soluble  
9 Steel Factor correlates with leukemic potential. *Blood* 96, 3734-3742.

10 Gu, Y., Runyan, C., Shoemaker, A., Surani, A., and Wylie, C. (2009). Steel  
11 factor controls primordial germ cell survival and motility from the time of  
12 their specification in the allantois, and provides a continuous niche  
13 throughout their migration. *Development* 136, 1295-1303.

14 Gu, Y., Runyan, C., Shoemaker, A., Surani, M.A., and Wylie, C. (2011).  
15 Membrane-bound steel factor maintains a high local concentration for mouse  
16 primordial germ cell motility, and defines the region of their migration. *PLoS*  
17 *One* 6, e25984.

18 Haas, M., Gomez Vazquez, J.L., Sun, D.I., Tran, H.T., Brislinger, M., Tasca,  
19 A., Shomroni, O., Vleminckx, K., and Walentek, P. (2019). DeltaN-Tp63 Mediates  
20 Wnt/beta-Catenin-Induced Inhibition of Differentiation in Basal Stem Cells of  
21 Mucociliary Epithelia. *Cell Rep* 28, 3338-3352 e3336.

22 Hayes, J.M., Kim, S.K., Abitua, P.B., Park, T.J., Herrington, E.R., Kitayama,  
23 A., Grow, M.W., Ueno, N., and Wallingford, J.B. (2007). Identification of novel  
24 ciliogenesis factors using a new in vivo model for mucociliary epithelial  
25 development. *Dev Biol* 312, 115-130.

26 Heissig, B., Hattori, K., Dias, S., Friedrich, M., Ferris, B., Hackett, N.R.,  
27 Crystal, R.G., Besmer, P., Lyden, D., Moore, M.A., et al. (2002). Recruitment  
28 of stem and progenitor cells from the bone marrow niche requires MMP-9 mediated  
29 release of kit-ligand. *Cell* 109, 625-637.

30 Hetrick, B., Han, M.S., Helgeson, L.A., and Nolen, B.J. (2013). Small molecules  
31 CK-666 and CK-869 inhibit actin-related protein 2/3 complex by blocking an  
32 activating conformational change. *Chem Biol* 20, 701-712.

33 Higashi, T., Arnold, T.R., Stephenson, R.E., Dinshaw, K.M., and Miller, A.L.  
34 (2016). Maintenance of the Epithelial Barrier and Remodeling of Cell-Cell  
35 Junctions during Cytokinesis. *Curr Biol* 26, 1829-1842.

36 Hu-Lowe, D.D., Zou, H.Y., Grazzini, M.L., Hallin, M.E., Wickman, G.R.,  
37 Amundson, K., Chen, J.H., Rewolinski, D.A., Yamazaki, S., Wu, E.Y., et al.  
38 (2008). Nonclinical antiangiogenesis and antitumor activities of axitinib (AG-  
39 013736), an oral, potent, and selective inhibitor of vascular endothelial  
40 growth factor receptor tyrosine kinases 1, 2, 3. *Clin Cancer Res* 14, 7272-7283.

41 Huang, Y.L., and Niehrs, C. (2014). Polarized Wnt signaling regulates  
42 ectodermal cell fate in *Xenopus*. *Dev Cell* 29, 250-257.

43 Hultman, K.A., Bahary, N., Zon, L.I., and Johnson, S.L. (2007). Gene  
44 Duplication of the zebrafish kit ligand and partitioning of melanocyte  
45 development functions to kit ligand a. *PLoS Genet* 3, e17.

46 Ing-Esteves, S., Kostadinov, D., Marocha, J., Sing, A.D., Joseph, K.S.,  
47 Laboulaye, M.A., Sanes, J.R., and Lefebvre, J.L. (2018). Combinatorial Effects  
48 of Alpha- and Gamma-Protocadherins on Neuronal Survival and Dendritic Self-  
49 Avoidance. *J Neurosci* 38, 2713-2729.

50 Irion, U., Frohnhof, H.G., Krauss, J., Colak Champollion, T., Maischein,  
51 H.M., Geiger-Rudolph, S., Weiler, C., and Nusslein-Volhard, C. (2014). Gap  
52 junctions composed of connexins 41.8 and 39.4 are essential for colour pattern  
53 formation in zebrafish. *Elife* 3, e05125.

54 Iwashita, M., Watanabe, M., Ishii, M., Chen, T., Johnson, S.L., Kurachi, Y.,  
55 Okada, N., and Kondo, S. (2006). Pigment pattern in jaguar/obelix zebrafish is  
56 caused by a Kir7.1 mutation: implications for the regulation of melanosome  
57 movement. *PLoS Genet* 2, e197.

1 Jordan, S.A., and Jackson, I.J. (2000). MGF (KIT ligand) is a chemokine  
2 factor for melanoblast migration into hair follicles. *Dev Biol* 225, 424-436.

3 Kaltenbach, S.L., Yu, J.K., and Holland, N.D. (2009). The origin and migration  
4 of the earliest-developing sensory neurons in the peripheral nervous system of  
5 amphioxus. *Evol Dev* 11, 142-151.

6 Kim, K., Lake, B.B., Harembaki, T., Weinstein, D.C., and Sokol, S.Y. (2012).  
7 *Rab11* regulates planar polarity and migratory behavior of multiciliated cells  
8 in *Xenopus* embryonic epidermis. *Dev Dyn* 241, 1385-1395.

9 Kim, S., Ma, L., Shokhirev, M.N., Quigley, I., and Kintner, C. (2018).  
10 Multicilin and activated E2f4 induce multiciliated cell differentiation in  
11 primary fibroblasts. *Sci Rep* 8, 12369.

12 Lennartsson, J., and Ronnstrand, L. (2012). Stem cell factor receptor/c-Kit:  
13 from basic science to clinical implications. *Physiol Rev* 92, 1619-1649.

14 Lucas, B.D.K., T. (1981). An iterative image registration technique with  
15 application to stereo vision. *Proceedings of Imaging Understanding Workshop*.

16 Ma, L., Quigley, I., Omran, H., and Kintner, C. (2014). Multicilin drives  
17 centriole biogenesis via E2f proteins. *Genes Dev* 28, 1461-1471.

18 Mani, M., Venkatasubrahmanyam, S., Sanyal, M., Levy, S., Butte, A., Weinberg,  
19 K., and Jahn, T. (2009). Wiskott-Aldrich syndrome protein is an effector of Kit  
20 signaling. *Blood* 114, 2900-2908.

21 Marchal, L., Luxardi, G., Thome, V., and Kodjabachian, L. (2009). BMP  
22 inhibition initiates neural induction via FGF signaling and *Zic* genes. *Proc*  
23 *Natl Acad Sci U S A* 106, 17437-17442.

24 Martin, B.L., and Harland, R.M. (2004). The developmental expression of two  
25 *Xenopus laevis* steel homologues, *Xsl-1* and *Xsl-2*. *Gene Expr Patterns* 5, 239-  
26 243.

27 Meininger, C.J., Yano, H., Rottapel, R., Bernstein, A., Zsebo, K.M., and  
28 Zetter, B.R. (1992). The c-kit receptor ligand functions as a mast cell  
29 chemoattractant. *Blood* 79, 958-963.

30 Miyazawa, K., Williams, D.A., Gotoh, A., Nishimaki, J., Broxmeyer, H.E., and  
31 Toyama, K. (1995). Membrane-bound Steel factor induces more persistent tyrosine  
32 kinase activation and longer life span of c-kit gene-encoded protein than its  
33 soluble form. *Blood* 85, 641-649.

34 Quigley, I.K., Stubbs, J.L., and Kintner, C. (2011). Specification of ion  
35 transport cells in the *Xenopus* larval skin. *Development* 138, 705-714.

36 Rizvi, S.A., Neidt, E.M., Cui, J., Feiger, Z., Skau, C.T., Gardel, M.L.,  
37 Kozmin, S.A., and Kovar, D.R. (2009). Identification and characterization of a  
38 small molecule inhibitor of formin-mediated actin assembly. *Chem Biol* 16, 1158-  
39 1168.

40 Runyan, C., Schaible, K., Molyneaux, K., Wang, Z., Levin, L., and Wylie, C.  
41 (2006). Steel factor controls midline cell death of primordial germ cells and  
42 is essential for their normal proliferation and migration. *Development* 133,  
43 4861-4869.

44 Samayawardhena, L.A., Kapur, R., and Craig, A.W. (2007). Involvement of Fyn  
45 kinase in Kit and integrin-mediated Rac activation, cytoskeletal  
46 reorganization, and chemotaxis of mast cells. *Blood* 109, 3679-3686.

47 Sedzinski, J., Hannezo, E., Tu, F., Biro, M., and Wallingford, J.B. (2016).  
48 Emergence of an Apical Epithelial Cell Surface In Vivo. *Dev Cell* 36, 24-35.

49 Sedzinski, J., Hannezo, E., Tu, F., Biro, M., and Wallingford, J.B. (2017).  
50 RhoA regulates actin network dynamics during apical surface emergence in  
51 multiciliated epithelial cells. *J Cell Sci* 130, 420-428.

52 Sirour, C., Hidalgo, M., Bello, V., Buisson, N., Darribere, T., and Moreau, N.  
53 (2011). Dystroglycan is involved in skin morphogenesis downstream of the Notch  
54 signaling pathway. *Mol Biol Cell* 22, 2957-2969.

1 Stramer, B., and Mayor, R. (2016). Mechanisms and in vivo functions of contact  
2 inhibition of locomotion. *Nat Rev Mol Cell Biol*.

3 Stubbs, J.L., Davidson, L., Keller, R., and Kintner, C. (2006). Radial  
4 intercalation of ciliated cells during *Xenopus* skin development. *Development*  
5 *133*, 2507-2515.

6 Stubbs, J.L., Vladar, E.K., Axelrod, J.D., and Kintner, C. (2012). Multicilin  
7 promotes centriole assembly and ciliogenesis during multiciliate cell  
8 differentiation. *Nat Cell Biol* *14*, 140-147.

9 Suraneni, P., Fogelson, B., Rubinstein, B., Noguera, P., Volkmann, N., Hanein,  
10 D., Mogilner, A., and Li, R. (2015). A mechanism of leading-edge protrusion in  
11 the absence of Arp2/3 complex. *Mol Biol Cell* *26*, 901-912.

12 Suraneni, P., Rubinstein, B., Unruh, J.R., Durnin, M., Hanein, D., and Li, R.  
13 (2012). The Arp2/3 complex is required for lamellipodia extension and  
14 directional fibroblast cell migration. *J Cell Biol* *197*, 239-251.

15 Tabone-Eglinger, S., Calderin-Sollet, Z., Pinon, P., Aebischer, N., Wehrle-  
16 Haller, M., Jacquier, M.C., Boettiger, D., and Wehrle-Haller, B. (2014). Niche  
17 anchorage and signaling through membrane-bound Kit-ligand/c-kit receptor are  
18 kinase independent and imatinib insensitive. *FASEB J* *28*, 4441-4456.

19 Tabone-Eglinger, S., Wehrle-Haller, M., Aebischer, N., Jacquier, M.C., and  
20 Wehrle-Haller, B. (2012). Membrane-bound Kit ligand regulates melanocyte  
21 adhesion and survival, providing physical interaction with an intraepithelial  
22 niche. *FASEB J* *26*, 3738-3753.

23 Tajima, Y., Moore, M.A., Soares, V., Ono, M., Kissel, H., and Besmer, P.  
24 (1998). Consequences of exclusive expression in vivo of Kit-ligand lacking the  
25 major proteolytic cleavage site. *Proc Natl Acad Sci U S A* *95*, 11903-11908.

26 Trindade, M., Messenger, N., Papin, C., Grimmer, D., Fairclough, L., Tada, M.,  
27 and Smith, J.C. (2003). Regulation of apoptosis in the *Xenopus* embryo by Bix3.  
28 *Development* *130*, 4611-4622.

29 Villar-Cervino, V., Molano-Mazon, M., Catchpole, T., Valdeolmillos, M.,  
30 Henkemeyer, M., Martinez, L.M., Borrell, V., and Marin, O. (2013). Contact  
31 repulsion controls the dispersion and final distribution of Cajal-Retzius  
32 cells. *Neuron* *77*, 457-471.

33 Walderich, B., Singh, A.P., Mahalwar, P., and Nusslein-Volhard, C. (2016).  
34 Homotypic cell competition regulates proliferation and tiling of zebrafish  
35 pigment cells during colour pattern formation. *Nat Commun* *7*, 11462.

36 Wehrle-Haller, B., Meller, M., and Weston, J.A. (2001). Analysis of melanocyte  
37 precursors in *Nf1* mutants reveals that MGF/KIT signaling promotes directed cell  
38 migration independent of its function in cell survival. *Dev Biol* *232*, 471-483.

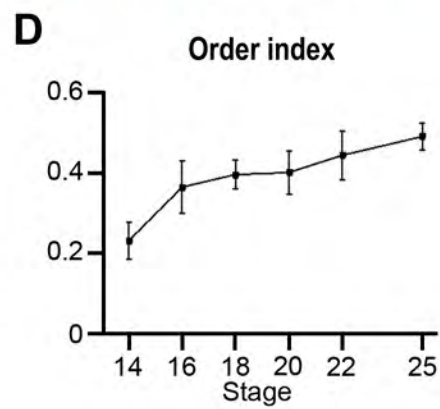
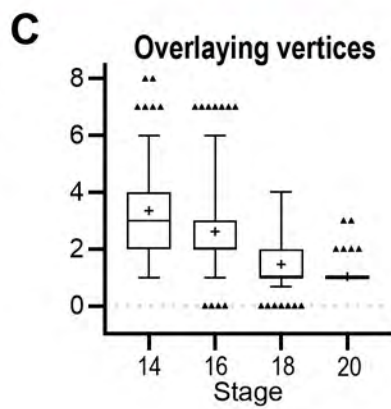
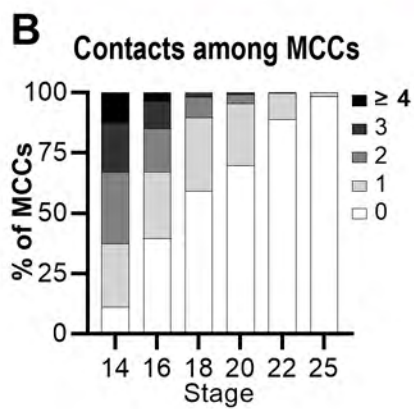
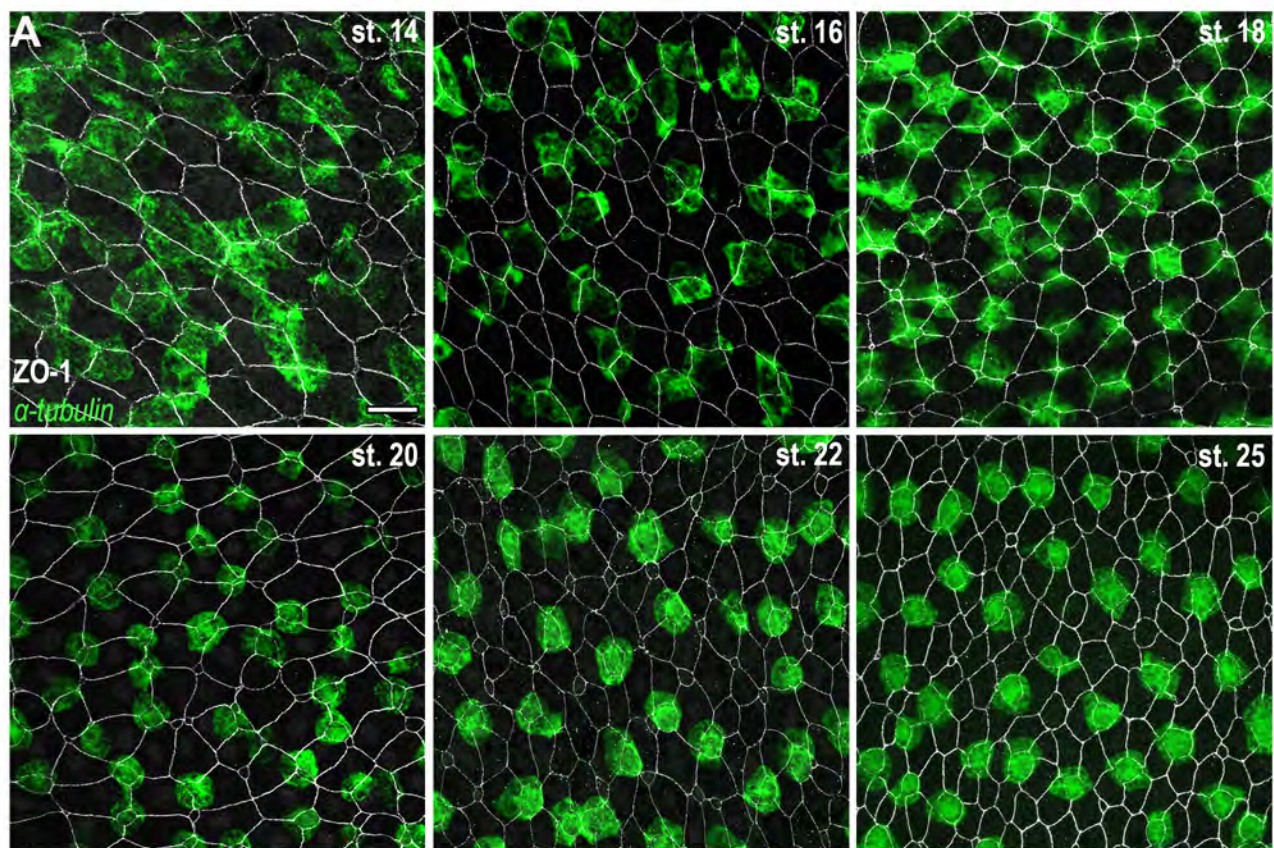
39 Wehrle-Haller, B., and Weston, J.A. (1995). Soluble and cell-bound forms of  
40 steel factor activity play distinct roles in melanocyte precursor dispersal and  
41 survival on the lateral neural crest migration pathway. *Development* *121*, 731-  
42 742.

43 Werner, M.E., and Mitchell, B.J. (2012). Understanding ciliated epithelia: the  
44 power of *Xenopus*. *Genesis* *50*, 176-185.

45 Werner, M.E., Mitchell, J.W., Putzbach, W., Bacon, E., Kim, S.K., and Mitchell,  
46 B.J. (2014). Radial intercalation is regulated by the Par complex and the  
47 microtubule-stabilizing protein CLAMP/Spem1. *J Cell Biol* *206*, 367-376.

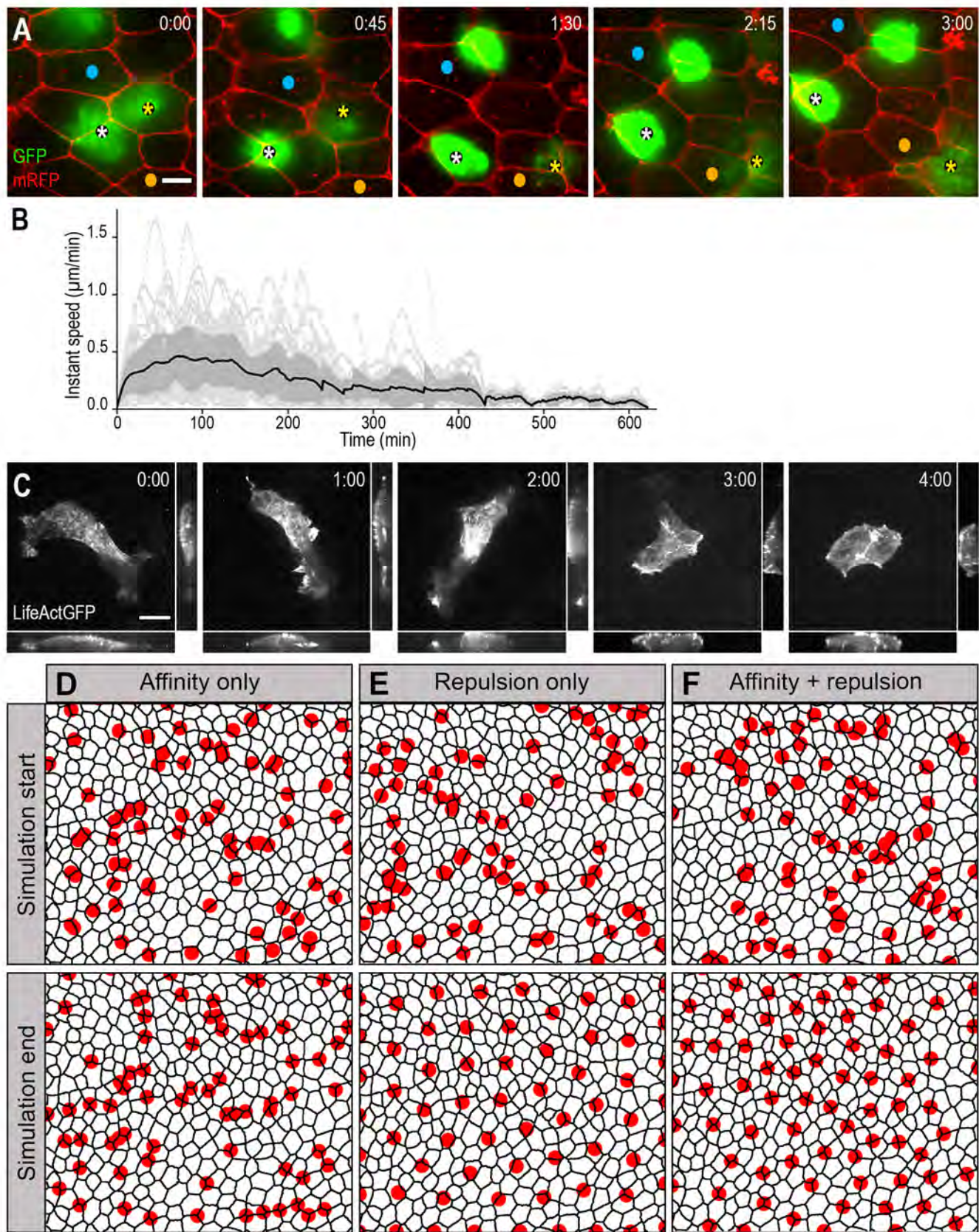
48 Zuo, K., Kuang, D., Wang, Y., Xia, Y., Tong, W., Wang, X., Chen, Y., Duan, Y.,  
49 and Wang, G. (2016). SCF/c-kit transactivates CXCR4-serine 339 phosphorylation  
50 through G protein-coupled receptor kinase 6 and regulates cardiac stem cell  
51 migration. *Sci Rep* *6*, 26812.

52



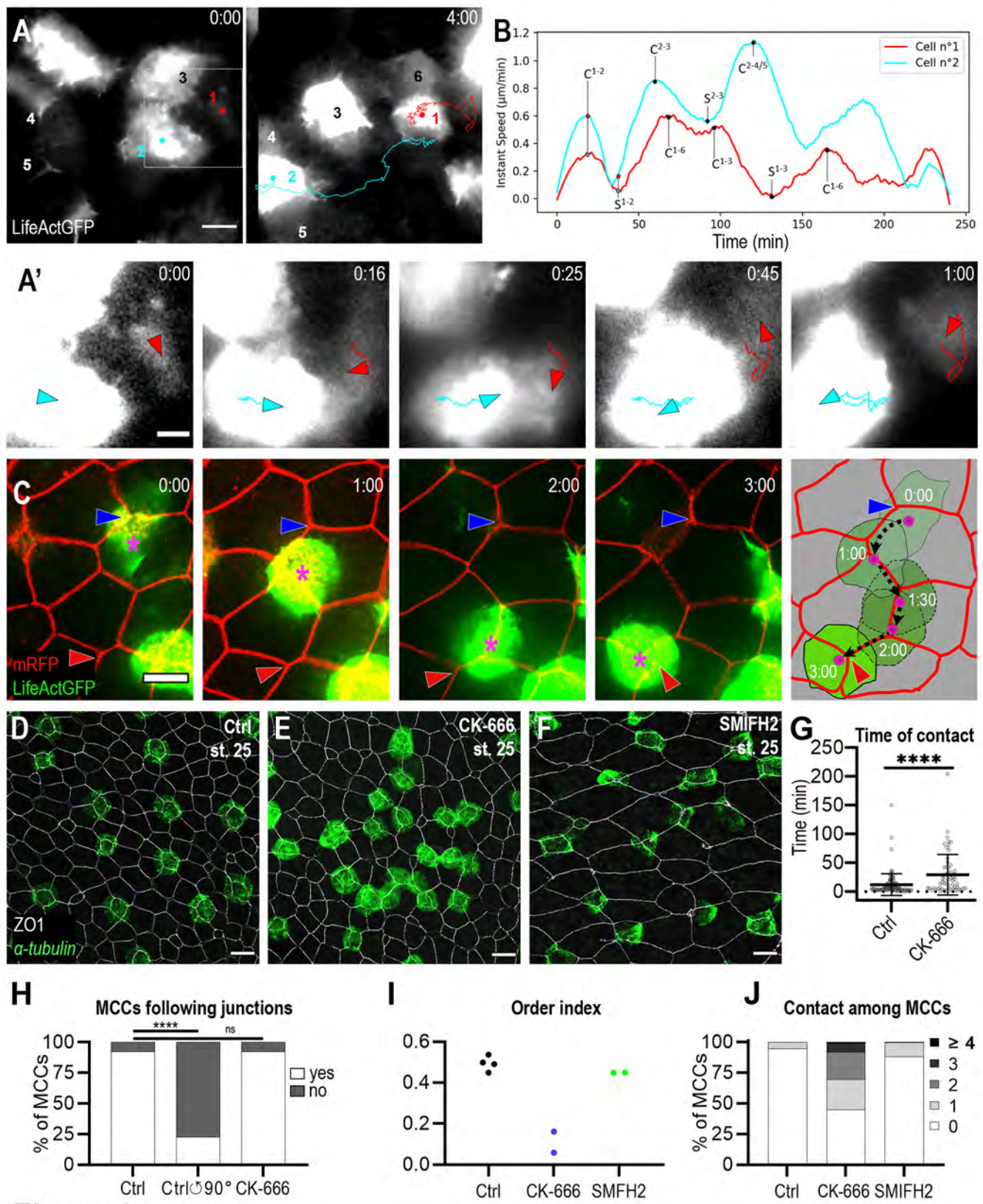
**Figure 1**



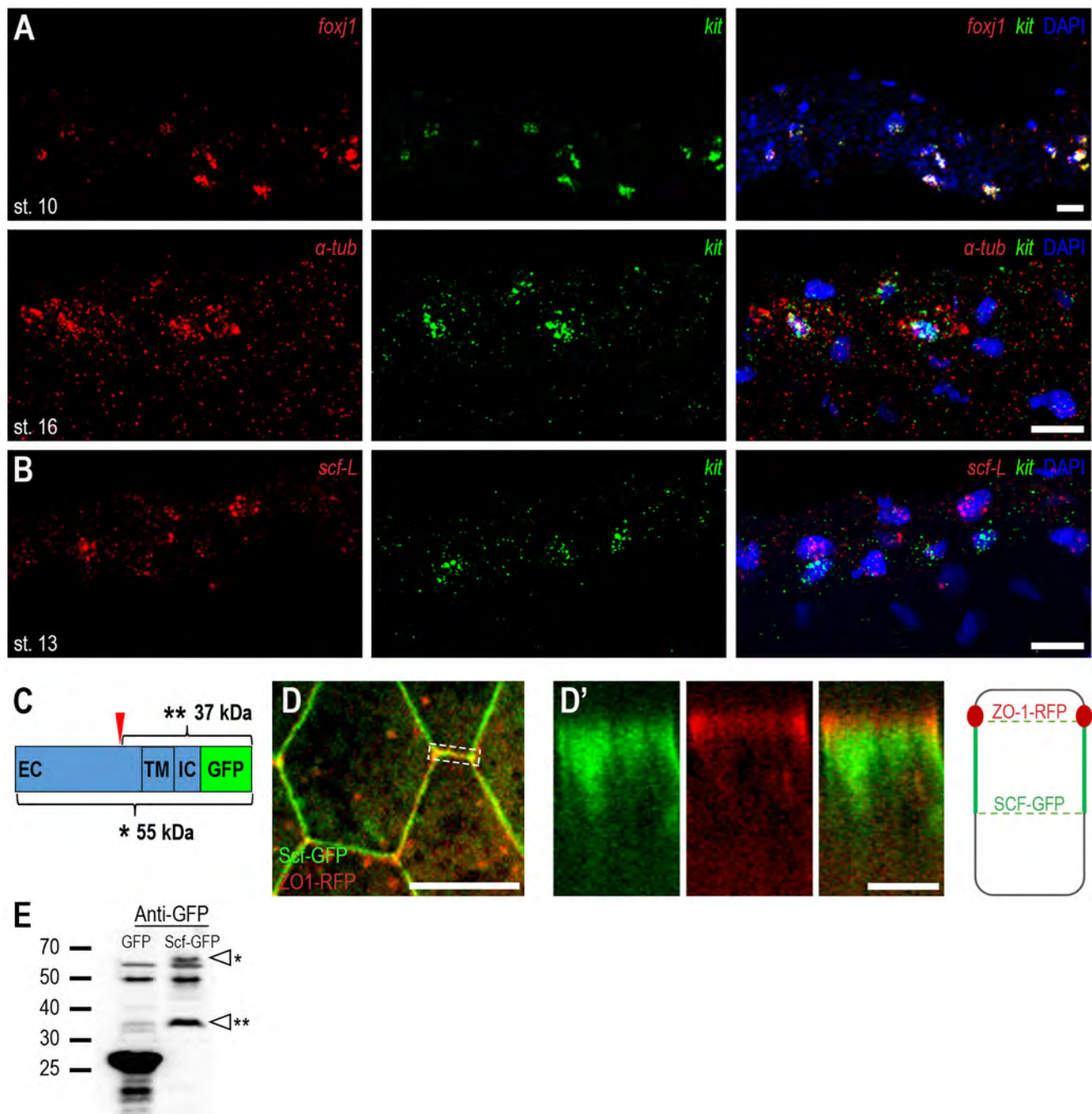


**Figure 2**



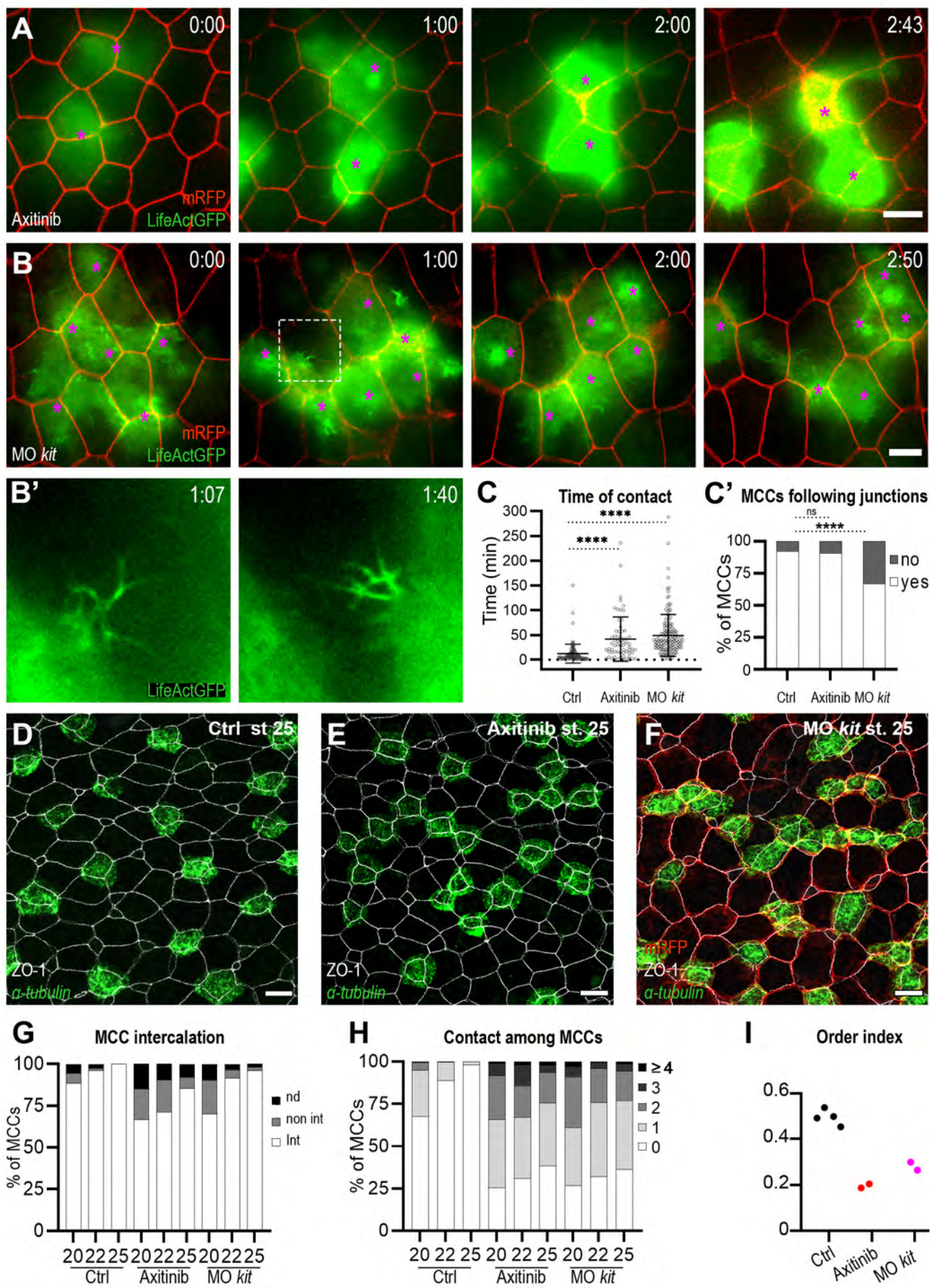


**Figure 3**



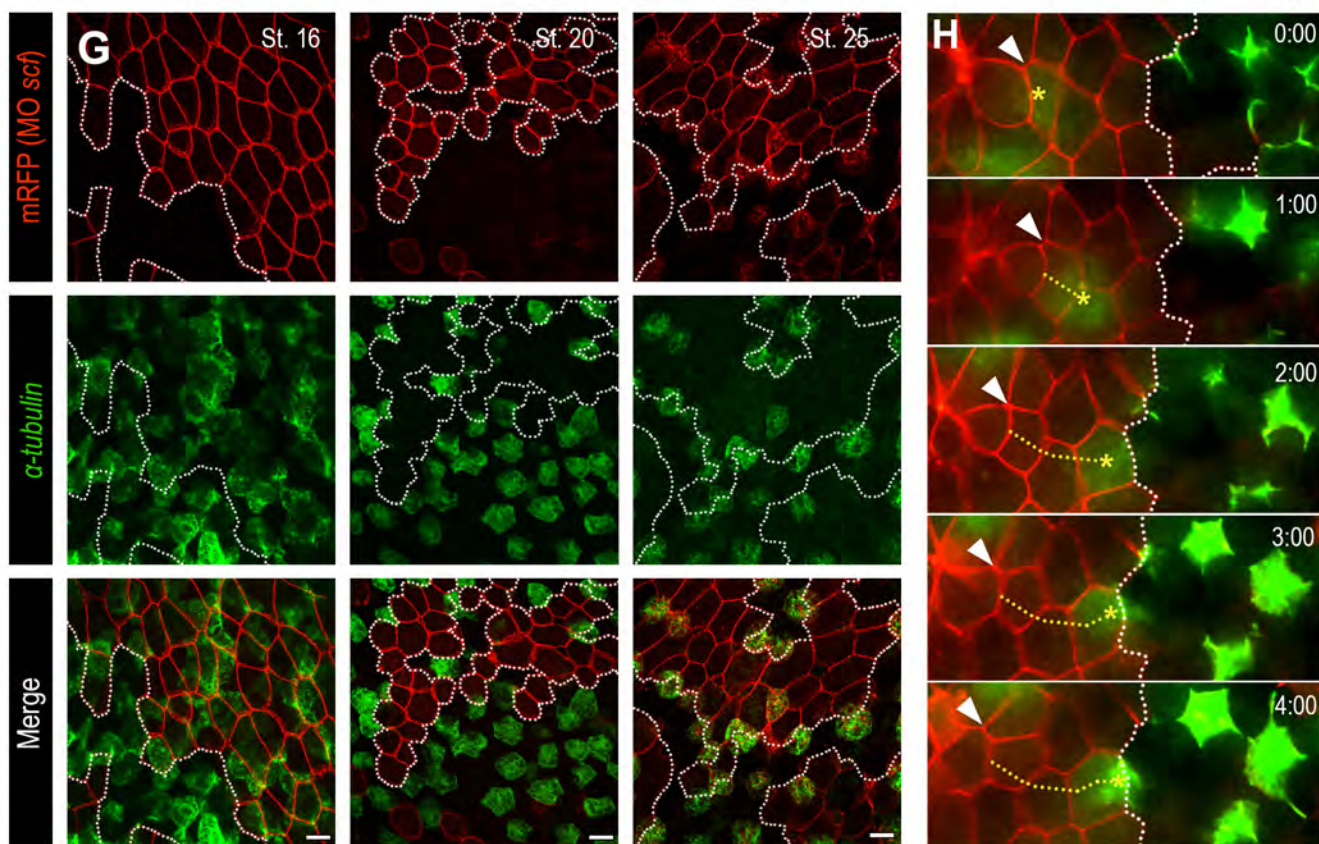
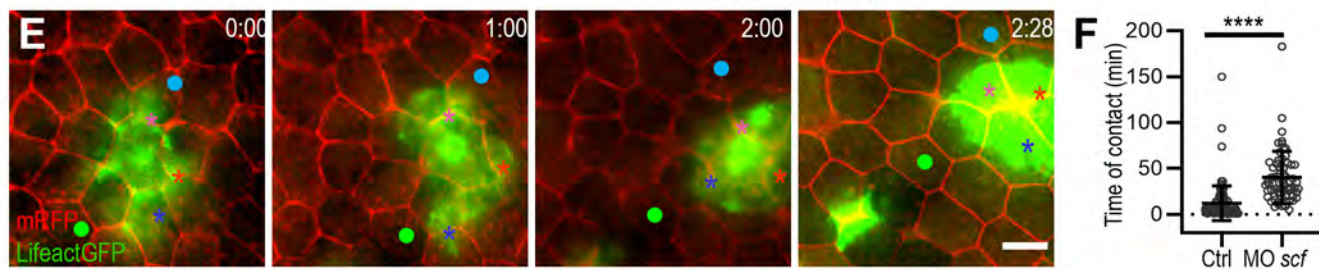
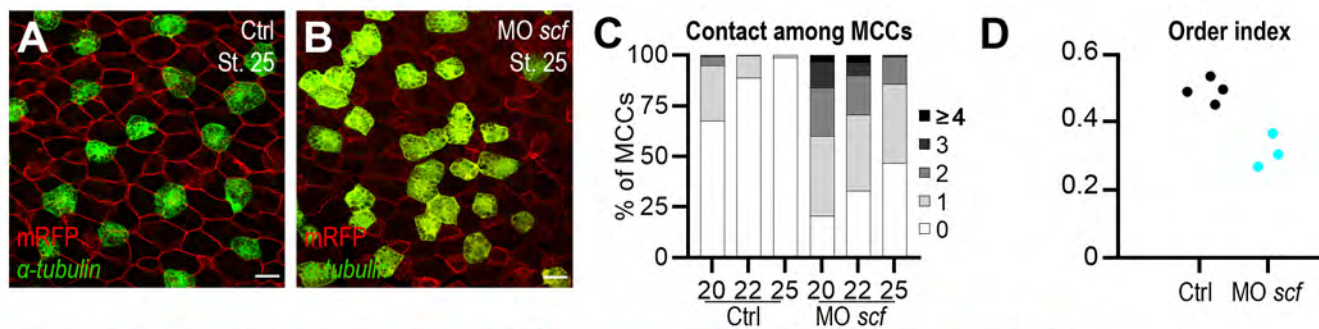
**Figure 4**



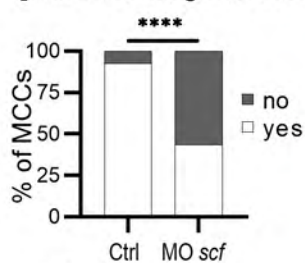


**Figure 5**



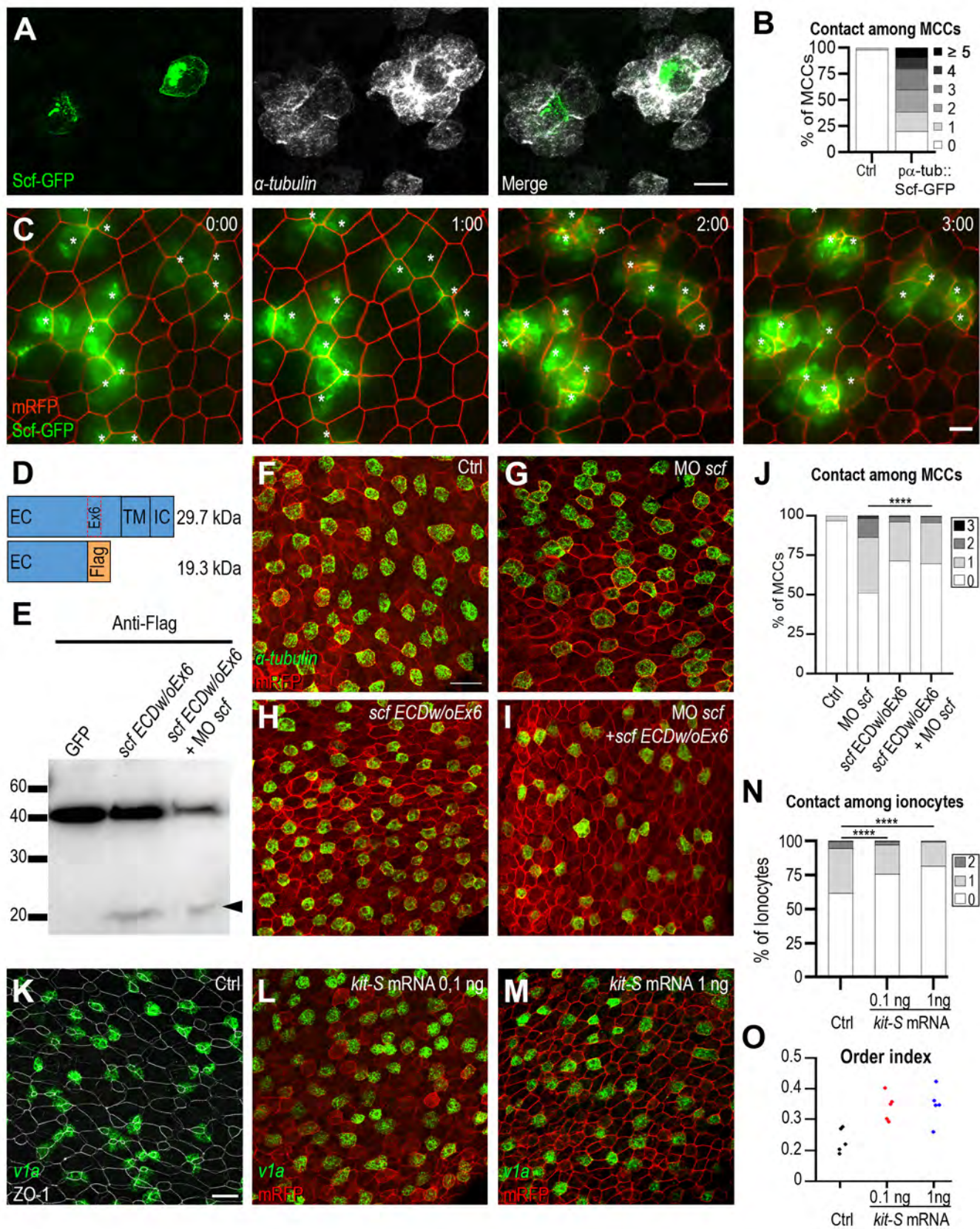


**I** MCC following Junctions



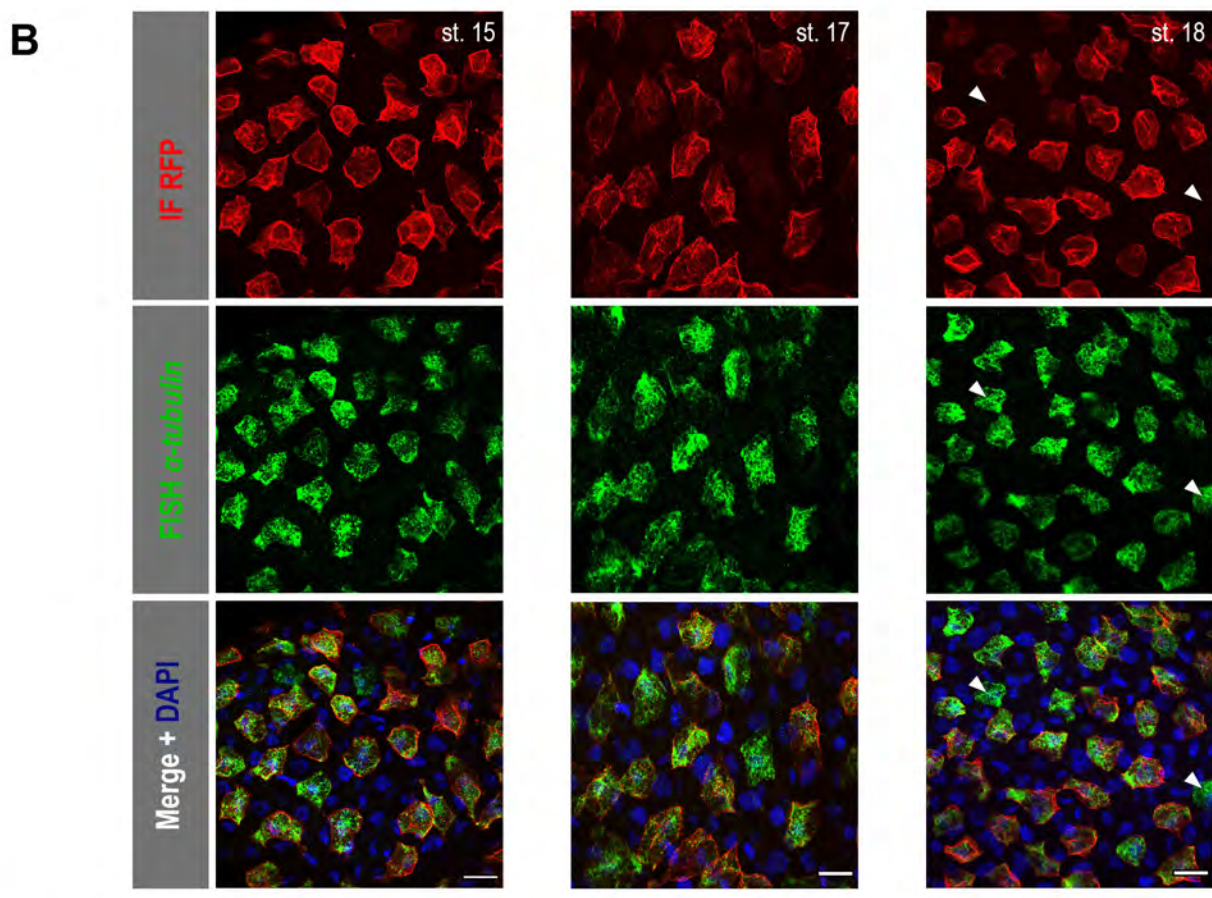
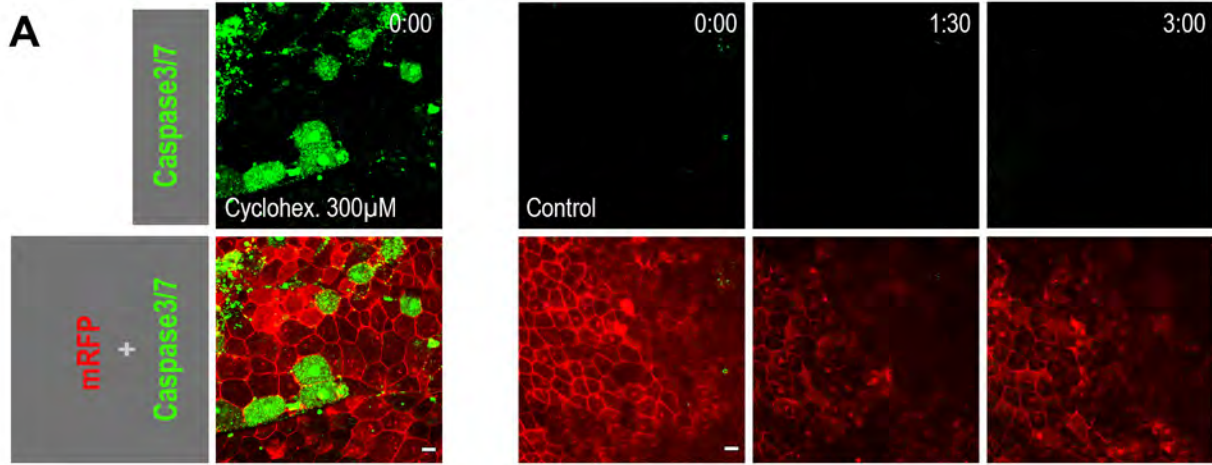
**Figure 6**



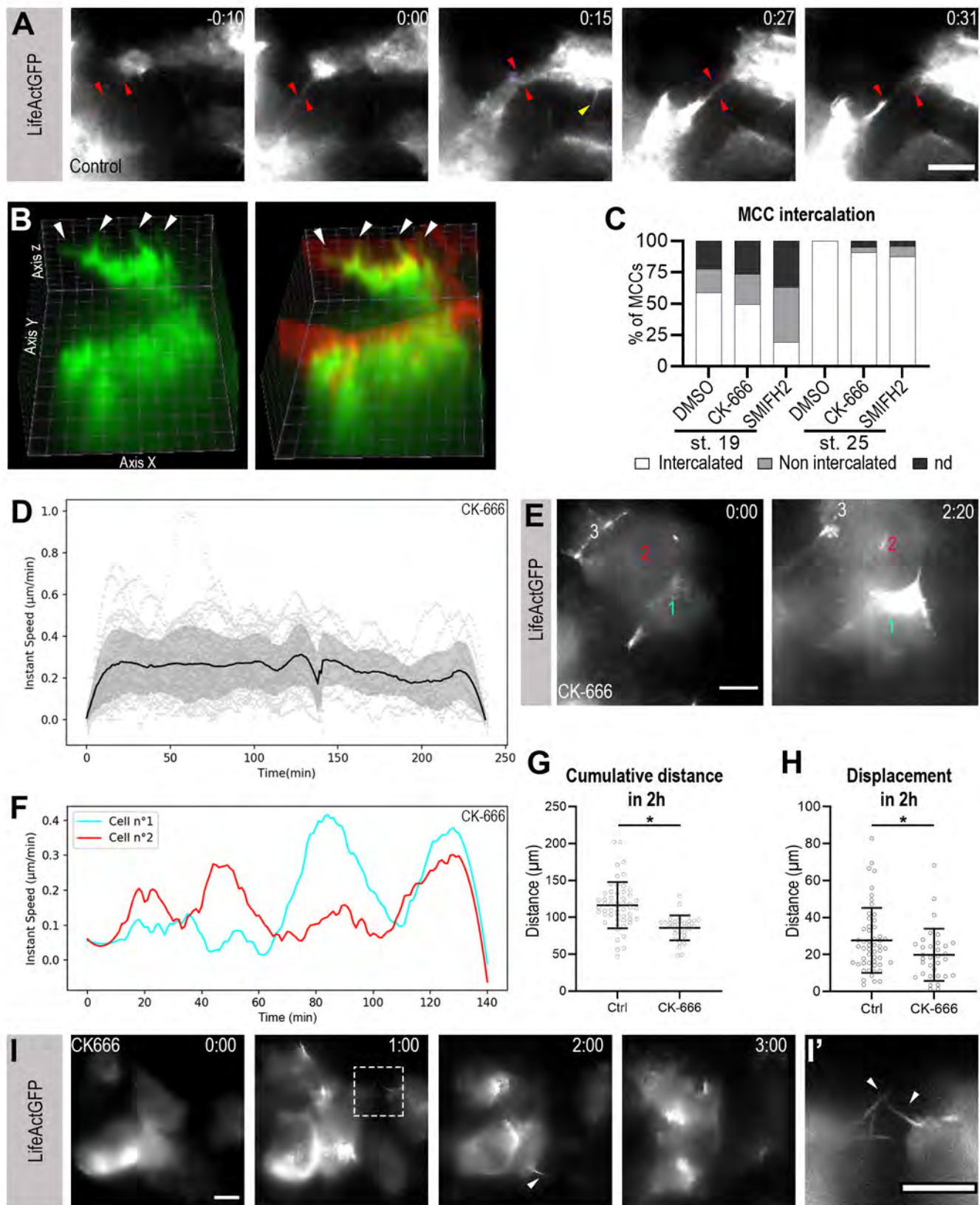


**Figure 7**

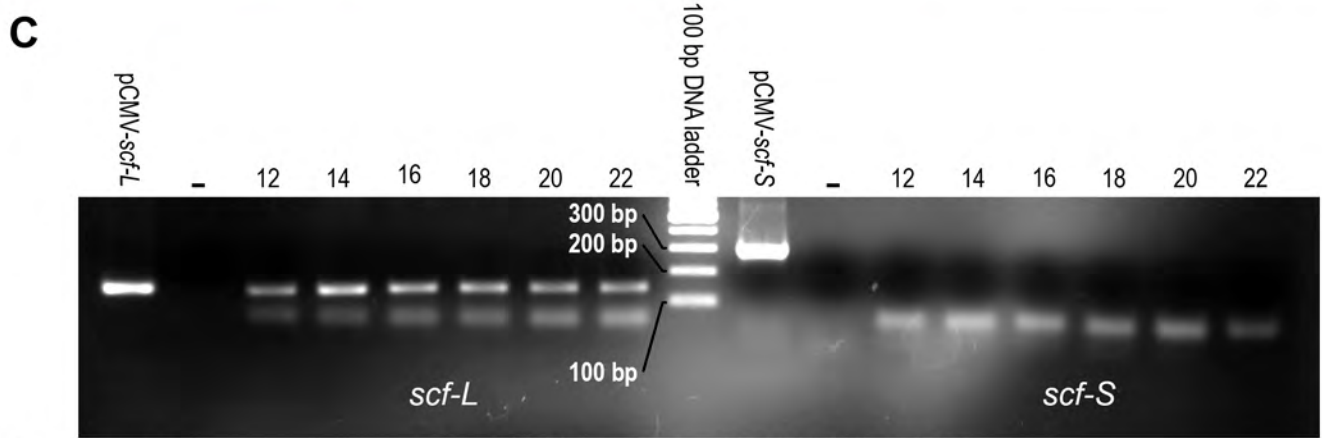
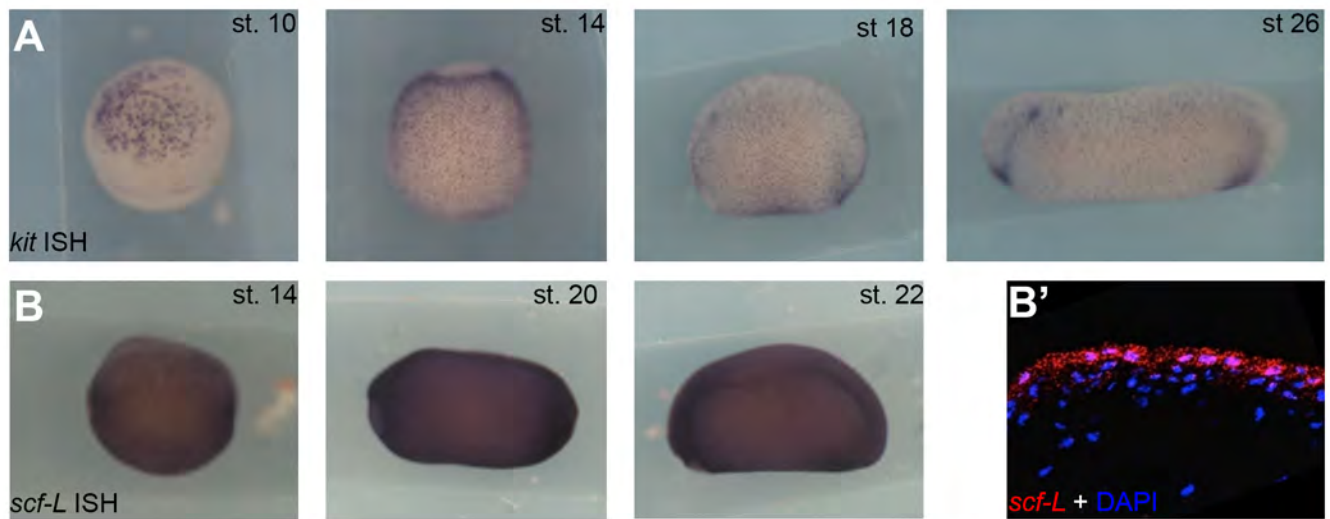




**Figure S1**



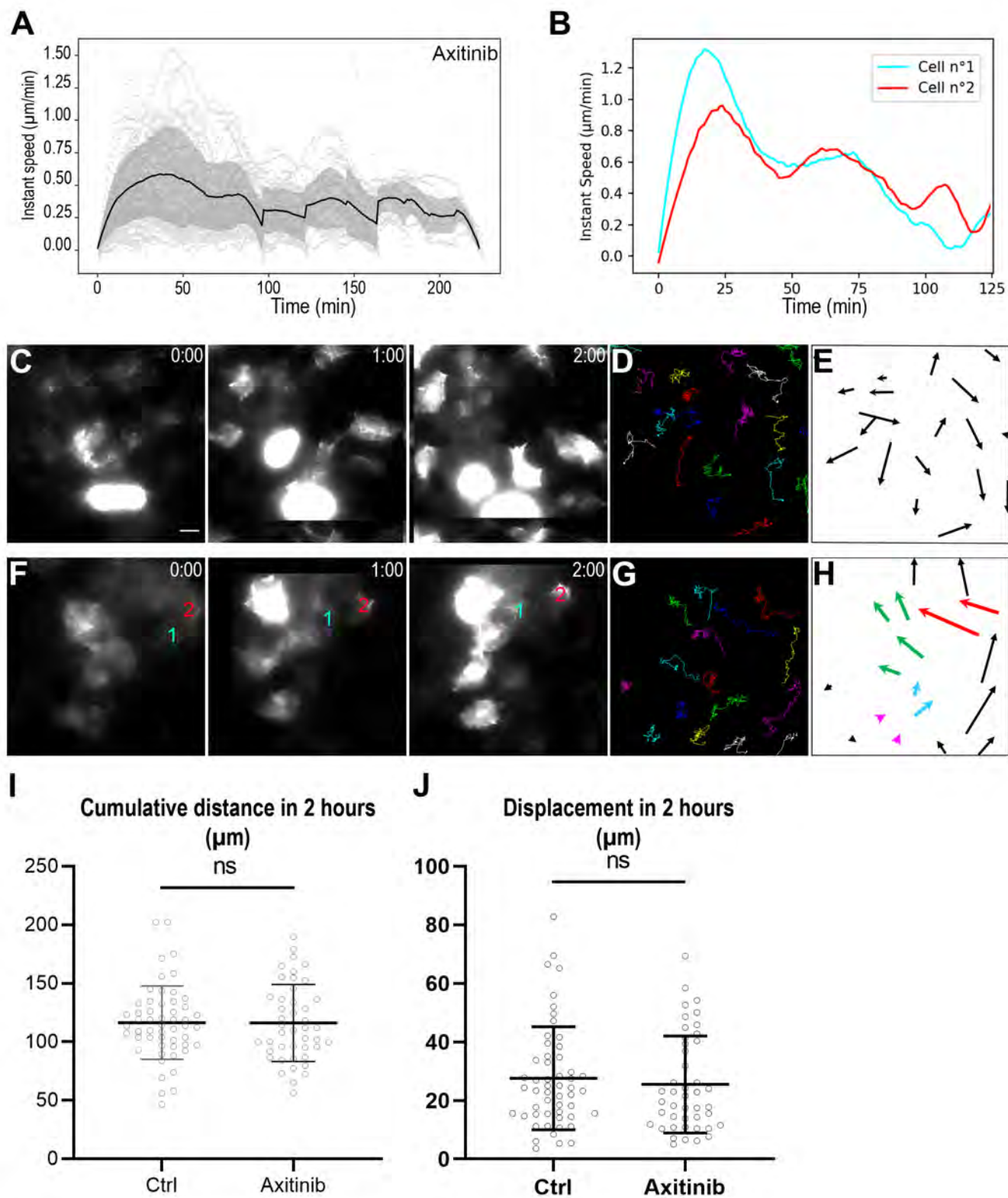
**Figure S2**



**Figure S3**

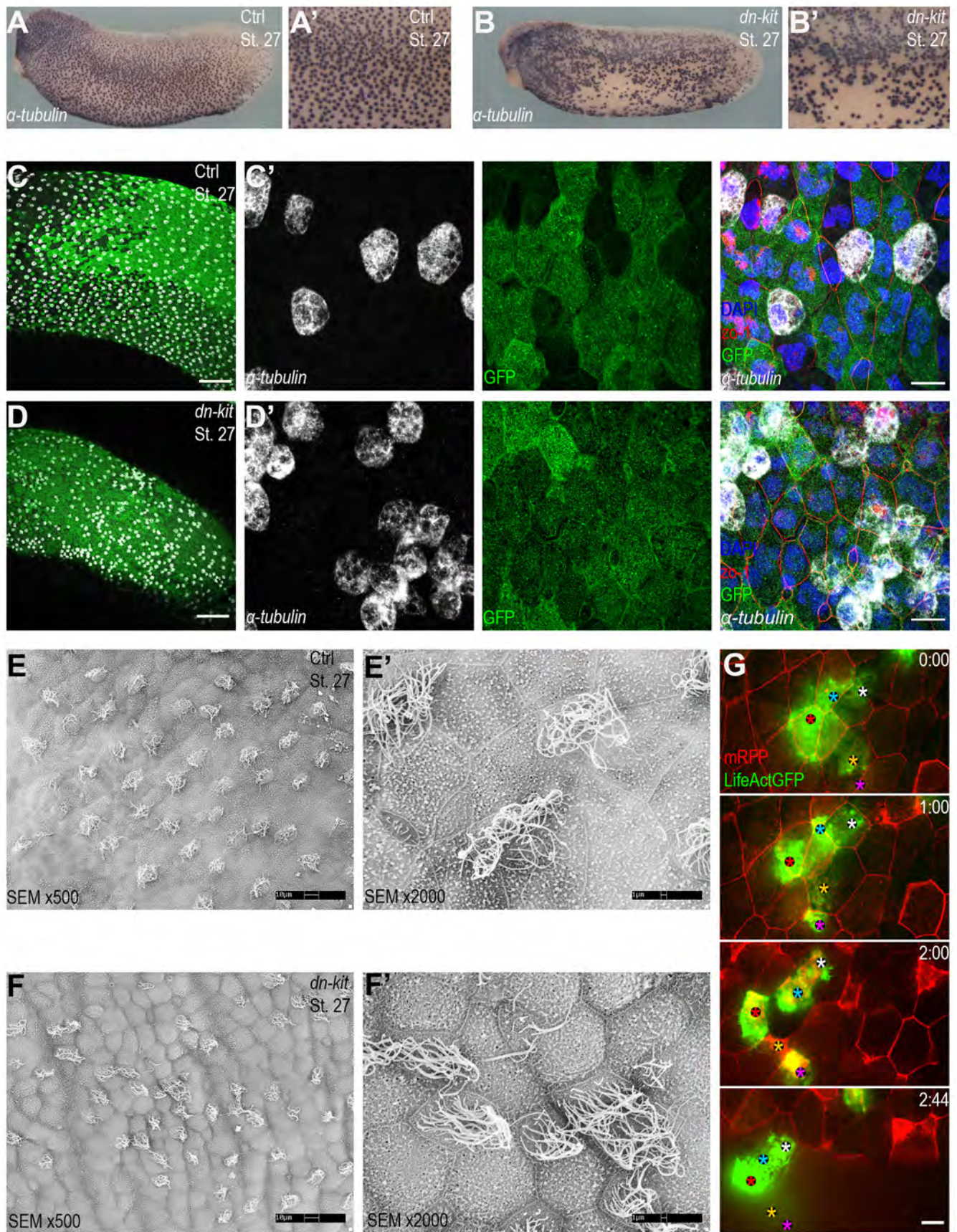
2% (w/v) agarose gel in TAE, EtBr staining





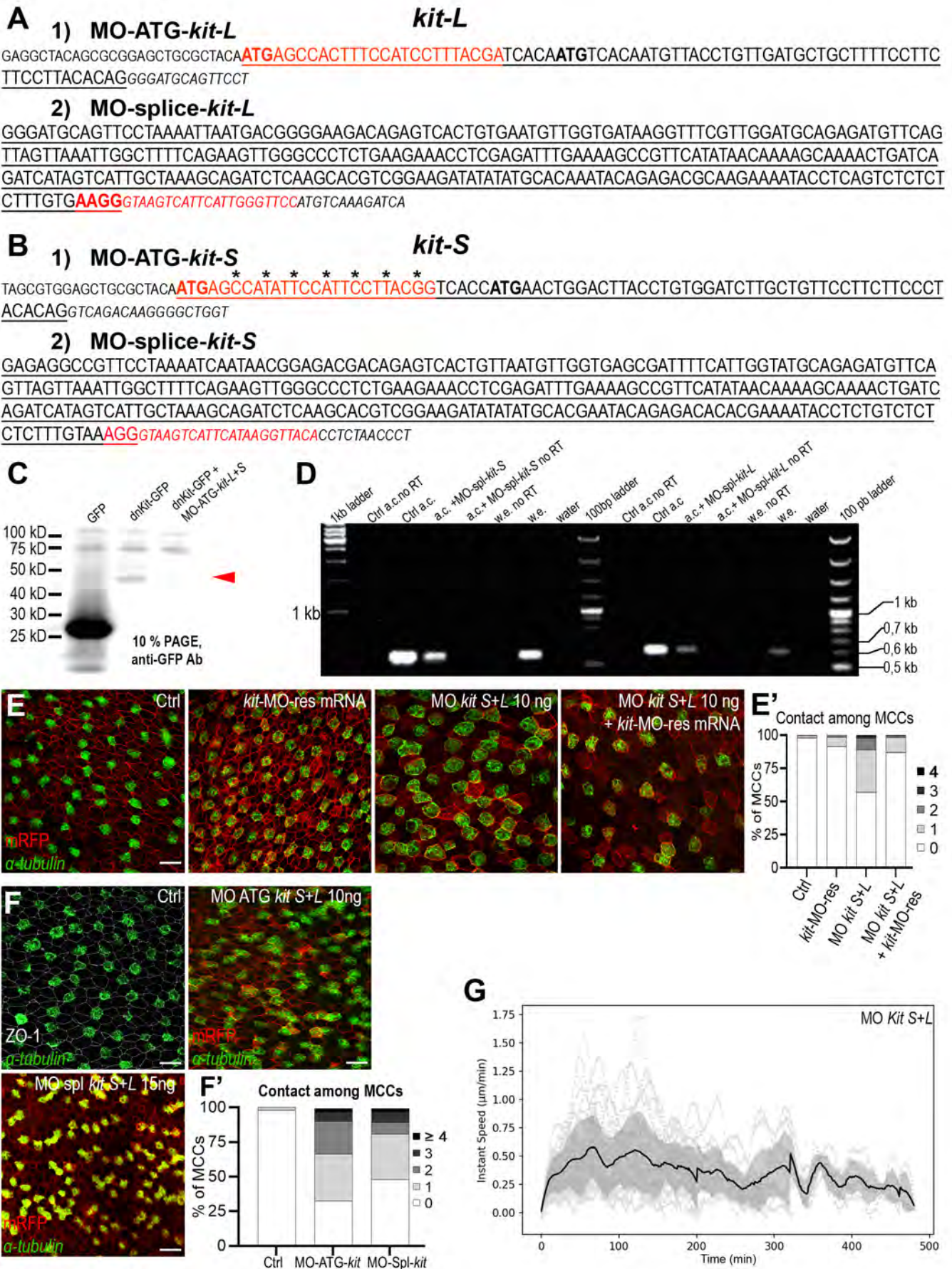
**Figure S4**





**Figure S5**





**Figure S6**

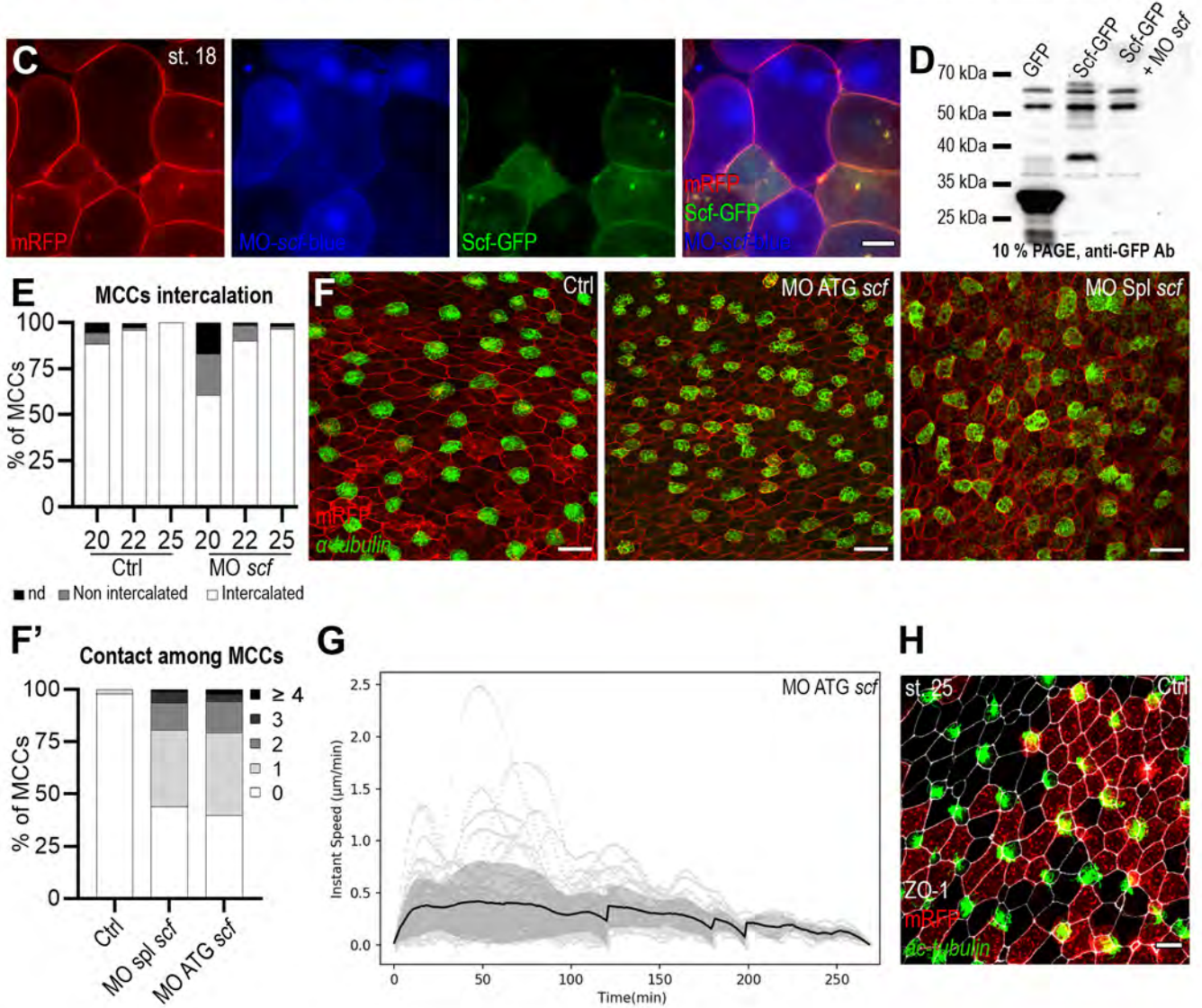
## A *scf-L*

1) GAAATGCACGGATTAGTTGAAATATGCTGGGGCTCCAGAGCAGCTAAGGGGATAATAGACAAGCTACCTAAATTGGATTGCTTTATCTTTTCCTTATGAAGAAGAC  
 AAAAGTAAGTAAGATGGAATATTGTATGTCTCAAAAGAT

2) ACTTGGATTATCATATGCATTTATCTTCAACTGTTTCTCCATTGCTTTGGGAATCCATGTGGAATCCAATCACTGATGCTGTAATG  
 ACATTCAGAAACTGGTAAGAGTTTTACCTAGCCAACCATTT

## B *scf-S*

TTAGCTGAAATATGCTGGGGCTCCAGAGCAGCTAAGGGGATAATAGACAAGCTACCTGAATTGGATTGCTTTATCTTTTCCTTATGAAGAAGACAAAA



**Figure S7**



Figure	Stage/ condition	n cells	n embryos	n experiments
1 B	14	456	4	3
	16	591	5	3
	18	408	4	3
	20	761	6	3
	22	572	6	3
	25	450	6	3
1 C	14	422	3	2
	16	587	4	2
	18	306	3	2
	20	331	2	1
1 D	14	440	3	2
	16	490	4	3
	18	306	3	2
	20	331	2	1
	22	384	4	2
	25	227	4	2
2 B	Ctrl	55	6	6
3 G	Ctrl	108	4	4
	CK-666	62	5	5
3 H	Ctrl	94	10	10
	Ctrl $\cup$ 90°	93	10	10
	CK-666	26	3	3
3I	Ctrl	227	4	4
	CK-666	209	2	2
	SMIFH2	144	2	2
3J	Ctrl	248	4	1
	CK-666	491	6	1
	SMIFH2	457	6	1
5 C	Ctrl	108	4	4
	Axitinib	64	3	3
	MO <i>kit</i>	147	5	5
5 C'	Ctrl	94	10	10
	Axitinib	56	9	9
	MO <i>kit</i>	70	5	5
5 G	Ctrl st 20	683	6	2
	Ctrl st 22	267	4	2
	Ctrl st 25	377	6	4
	Axitinib st 20	441	5	2
	Axitinib st 22	625	4	2
	Axitinib st 25	724	6	3
	MO <i>kit</i> st 20	248	2	1
	MO <i>kit</i> st 22	370	3	1
	MO <i>kit</i> st 25	411	4	2
5 H	Ctrl st 20	761	6	3
	Ctrl st 22	572	6	3
	Ctrl st 25	663	12	4
	Axitinib st 20	830	8	3
	Axitinib st 22	753	5	2
	Axitinib st 25	735	8	2
	MO <i>kit</i> st 20	860	5	2
	MO <i>kit</i> st 22	998	8	2
	MO <i>kit</i> st 25	857	9	3
5 I	Ctrl	227	4	4
	Axitinib	231	2	2
	MO <i>kit</i>	219	2	2
6 C	Ctrl st 20	761	6	3
	Ctrl st 22	572	6	3
	Ctrl st 25	518	8	4
	MO <i>scf</i> st 20	678	7	4
	MO <i>scf</i> st 22	545	6	1
	MO <i>scf</i> st 25	768	8	4
	6 D	Ctrl	227	4
MO <i>scf</i>		220	3	3
6 F	Ctrl	108	4	4
	MO <i>scf</i>	64	5	5
6 I	Ctrl	94	10	10
	MO <i>scf</i>	62	5	5
7 B	Ctrl	506	8	2
	paTub::Scf-GFP	515	8	2
7J	Ctrl	1589	16	2
	MO <i>scf</i>	1031	8	2
	scf ECDw/oEx6	1261	10	2
	scf ECDw/oEx6 + MO <i>scf</i>	1315	13	2
7 N	Ctrl	1707	16	2
	<i>kit</i> mRNA 0,1 ng	1526	15	2
	<i>kit</i> mRNA 1 ng	1704	17	2
7 O	Ctrl	272	5	2
	<i>kit</i> mRNA 0,1 ng	301	5	2
	<i>kit</i> mRNA 1 ng	299	5	2
S2 C	Ctrl st 19	373	3	1
	CK-666 st 19	288	3	1
	SMIFH2 st 19	386	3	1
	Ctrl st 25	116	2	1
	CK-666 st 25	208	2	1
	SMIFH2 st 25	144	2	1
S2 E-G	Ctrl	55	6	6
	CK-666	40	3	3
S4 A,I,J	Ctrl	55	6	6
	Axitinib	67	5	5
S6 E'	Ctrl	954	14	2
	<i>kit</i> -MO-Res	837	13	2
	MO <i>kit</i>	1049	14	2
	MO <i>kit</i> + <i>kit</i> -MO-res	894	14	2
S6 F'	Ctrl	558	8	2
	MO <i>kit</i> ATG	522	5	2
	MO <i>kit</i> spl	592	6	2
S6G	MO <i>kit</i> ATG	40	5	5
S7 E	Ctrl st 20	683	6	2
	Ctrl st 22	267	4	2
	Ctrl st 25	226	4	2
	MO <i>scf</i> st 20	720	7	3
	MO <i>scf</i> st 22	408	4	1
	MO <i>scf</i> st 25	367	5	2
S7 F'	Ctrl	602	12	2
	MO Spl <i>scf</i> 20 ng	624	10	2
	MO ATG <i>scf</i> 10ng	723	7	2
S7 G	MO ATG <i>scf</i> 10ng	61	5	5

**Table S1:** Total number of cells, embryos and repeat experiments for all graphs in all figures