



# Brine chemistry matters: isolation by environment and by distance explain population genetic structure of *Artemia franciscana* in saline lakes

Dagmar Frisch, Christophe D Lejeusne, Masaki Hayashi, Mark T Bidwell, Javier Sánchez-fontenla, Andy J Green

## ► To cite this version:

Dagmar Frisch, Christophe D Lejeusne, Masaki Hayashi, Mark T Bidwell, Javier Sánchez-fontenla, et al.. Brine chemistry matters: isolation by environment and by distance explain population genetic structure of *Artemia franciscana* in saline lakes. *Freshwater Biology*, 2021, 66 (8), pp.1546-1559. 10.1111/fwb.13737 . hal-03249374

**HAL Id: hal-03249374**

**<https://amu.hal.science/hal-03249374>**

Submitted on 4 Jun 2021

**HAL** is a multi-disciplinary open access archive for the deposit and dissemination of scientific research documents, whether they are published or not. The documents may come from teaching and research institutions in France or abroad, or from public or private research centers.

L'archive ouverte pluridisciplinaire **HAL**, est destinée au dépôt et à la diffusion de documents scientifiques de niveau recherche, publiés ou non, émanant des établissements d'enseignement et de recherche français ou étrangers, des laboratoires publics ou privés.



Distributed under a Creative Commons Attribution 4.0 International License

**Brine chemistry matters: isolation by environment and by distance explain  
population genetic structure of *Artemia franciscana* in saline lakes**

Dagmar Frisch<sup>1,\*</sup>

Christophe Lejeusne<sup>2,3</sup>

Masaki Hayashi<sup>4</sup>

Mark T. Bidwell<sup>5</sup>

Javier Sánchez-Fontenla<sup>3</sup>

Andy J. Green<sup>3</sup>

<sup>1</sup>University of Birmingham, School of Biosciences, Birmingham UK

<sup>2</sup>Aix Marseille Univ, CNRS, IRD, Avignon Université, IMBE, UMR 7263, Station Marine  
d'Endoume, Rue de la Batterie des Lions, 13007 Marseille, France

<sup>3</sup>Department of Wetland Ecology, Estación Biológica de Doñana (EBD-CSIC), C/Américo  
Vespucio 26, 41092 Sevilla, Spain

<sup>4</sup>Department of Geoscience, University of Calgary, 2500 University Drive NW, Calgary,  
Alberta, T2N 1N4, Canada

<sup>5</sup>Canadian Wildlife Service, Environment and Climate Change Canada, Saskatoon, SK,  
Canada

\* corresponding author, email: dfrisch@ou.edu

Running title: Population genetics of native *Artemia*

25    Keywords: brine shrimps, native region, hydrogeochemistry, colonization route, dispersal

## Abstract

1. The American brine shrimp *Artemia franciscana* is important in aquaculture and has become invasive in other continents, aided by dispersal via waterbirds. However, little is known about processes underlying its genetic diversity and population structure in its natural habitat in North America. These processes, including dispersal and local adaptation, are pivotal drivers of species distribution and community structure, and therefore central to aquatic biodiversity.

2. We studied 15 populations in natural saline lakes of Saskatchewan, Canada to determine the influence of variation in geological history, water chemistry, lake size and location. We aimed to determine the relative importance of isolation by distance (IBD) and isolation by environment (IBE) using the cytochrome *c* oxidase subunit 1 gene (CO1) as a mitochondrial marker and five nuclear microsatellite markers.

3. Geographic patterns for CO1 and microsatellites differed, with lakes clustering in different groups based on genetic distances according to the marker used. CO1 better indicated historical colonization processes, suggesting potential routes of initial colonization when lakes were formed after deglaciation 11,000-15,000 years ago.

4. Differentiation between lakes based on nuclear markers was strongly related to variation in hydrochemistry, suggested by distance-based redundancy analysis (dbRDA), but there was no indication of IBD. The ratio between alkalinity and the sum of Ca and Mg concentrations was particularly important, although a lake with a high Cl concentration caused by Potash mining also had a unique *Artemia* population.

5. Geochemistry is important in the adaptive radiation of anostracan crustaceans. Our study suggests it also underlies intraspecific genetic variation between populations, promoting IBE, and making dispersal ineffective when cysts are moved by birds between lakes with different hydrochemistry.

## Introduction

The role of dispersal and environmental filtering in structuring communities and populations is central to research that seeks a better understanding of species distributions and biogeographical patterns (D'Amen, Mod, Gotelli, & Guisan, 2018; Ovaskainen et al., 2017). Dispersal connects populations across spatial distances, leading to gene flow if followed by successful establishment in the new habitat (Bohonak, 1999). Such successful establishment may be hindered by unsuitable local environmental conditions or by a resident population with a numerical or fitness advantage resulting from priority effects, or local adaptation (De Meester et al 2016). Several patterns of genetic differentiation are predicted to result from three main processes or their interaction: isolation by distance (IBD (Wright, 1943)), isolation by environment (IBE (Wang & Bradburd, 2014) and isolation by adaptation (IBA (Nosil, Egan, & Funk, 2008)). The processes underlying these spatial genetic patterns can be identified by testing relationships between genetic differentiation and geographic and ecological distances (Orsini, Vanoverbeke, Swillen, Mergeay, & De Meester, 2013). Here, we examine drivers of biogeographic patterns of the brine shrimp *Artemia franciscana* Kellog, 1906 (Branchiopoda: Anostraca) in its native range of North America. This species is highly invasive in other continents, to which it was originally exported from the Great Salt Lake and San Francisco Bay as resistant eggs (cysts) used widely as food in aquaculture (Amat et al., 2005; Horváth et al., 2018). It has become a model species in toxicology (Ruebhart et al., 2008; Libralato et al., 2016). In addition, it is also probably the best known example of an aquatic invertebrate that disperses via migratory waterbirds, which consume *Artemia* and disperse their cysts via gut passage owing to their ability to resist digestion (Muñoz, Amat, Green, Figuerola, & Gómez, 2013; Reynolds, Miranda, & Cumming, 2015; Sánchez, Hortas, Figuerola, & Green, 2012).

76 We focus our study on saline lakes of the Saskatchewan prairies, within the Great Plains  
77 bioregion for anostracans (Rogers, 2014a). This area was covered by an ice sheet during  
78 the last glacial period until the onset of deglaciation of southern Saskatchewan about  
79 17,000 years BP, which gradually retreated in a north-east direction (Christiansen,  
80 1979).

81 The export of cysts from San Francisco Bay and the Great Salt Lake in the USA has  
82 largely determined the genetic structure of *A. franciscana* in Mexico, as well as across  
83 continents other than North America (Eimanifar, Van Stappen, Marden, & Wink, 2014;  
84 Horváth et al., 2018). However, populations in central Canada, where the lakes freeze in  
85 winter and the hydrochemistry is markedly different, are unaffected by this export  
86 (Muñoz et al., 2013). Population genetic studies of this and other *Artemia* species have  
87 previously been concentrated in solar salt works or aquaculture ponds (Muñoz et al.,  
88 2008; Muñoz et al., 2013, 2014), and studies in natural lakes are rare. Naihong et al.  
89 (2000) found greater allozyme heterozygosity for *A. sinica* in larger lakes. Panmixia has  
90 been reported for *A. franciscana* in Great Salt Lake (Eimanifar, Marden, Braun, & Wink,  
91 2015) and for *A. urmiana* in Lake Urmia (Eimanifar & Wink, 2013).

92 Within North America, the distribution of different species of anostracan crustaceans is  
93 strongly related to regional differences in geochemistry, and hence hydrochemistry  
94 (Rogers, 2014a). This suggests that variation in geo- and hydrochemistry may also be a  
95 strong selective force for local adaptation amongst widely distributed species such as *A.*  
96 *franciscana*, and may potentially result in population genetic patterns that suggest IBE.  
97 This is supported by differences observed under laboratory conditions between *A.*  
98 *franciscana* populations in their tolerance of different ionic concentrations (Bowen,  
99 Buoncristiani, & Carl, 1988). Saskatchewan has an estimated 500 saline lakes greater  
100 than one square kilometer in area, mainly dominated by sodium sulfate and magnesium

sulfate salts (Hammer, 1993). Beginning in 1918 in Muskiki Lake, sodium sulfate has been industrially extracted from 20 lakes, which supplied about 50% of the North American demand (Last & Ginn, 2005). However, the hydrochemistry varies considerably between different saline lakes in this region (Bowman & Sachs, 2008). Many of these lakes are important for the conservation of migratory waterbirds, including two of our study sites: Chaplin Lake and Old Wives / Frederick Lakes (Important Bird Areas, <https://www.ibacanada.ca/>).

We would expect that *Artemia* populations colonized the natural saline lakes of Saskatchewan following glacial retreat 11,000-15,000 years ago (Christiansen, 1979), with migratory waterbirds facilitating long-distance dispersal and hence colonization of newly formed lakes (Muñoz et al., 2013). Contemporary gene flow via bird movements may be expected to increase the similarity between lakes, particularly those that are close together, which may be visited repeatedly by the same individual birds even on a daily basis (Demers, Colwell, Takekawa, & Ackerman, 2008; Green, Figuerola, & Sánchez, 2002) and thereby increase the effect of IBD. Larger lakes are also likely to hold greater abundance and diversity of waterbirds (Bidwell, Green, & Clark, 2014; Sebastián-González & Green, 2014), increasing the arrival and diversifying the origin of cysts brought from other lakes, and hence promoting a correlation between lake size and genetic diversity. On the other hand, differences in hydrochemistry and resulting local adaptation may mean that only a subset of lakes provide suitable habitat for a given genotype, promoting IBE and reducing the chances that *Artemia* brought by birds as cysts may survive.

For this study, we apply the mitochondrial CO1 gene and microsatellite markers to study historic and current drivers of *Artemia franciscana* biogeography in its native distribution. In particular, we test the hypotheses that (1) genetic diversity is positively

correlated with lake area, and that (2) spatial genetic structure of populations in the Saskatchewan saline lakes follows a pattern of isolation by environment (IBE) rather than a pattern of isolation by distance that would result from dispersal limitation (IBD).

## **Methods**

### ***Study area***

From June to August 2011, 50 saline lakes were visited within the Saskatchewan plains and searched for *Artemia*, although many of these lakes were too low in salinity to support *Artemia franciscana*, and some of them only held other anostracans associated with lower salinities (*Branchinecta* spp.). These lakes were partly selected on the basis of existing literature on saline lakes, as some of them were included in broader studies of the chemistry and invertebrate communities of saline lakes in Saskatchewan (Bentley, Hayashi, Zimmerman, Holmden, & Kelley, 2016; Bowman & Sachs, 2008; Hammer, 1993; Last & Ginn, 2005; Wissel, Cooper, Leavitt, & Pham, 2011). A minority of our study lakes are well known for their *Artemia* populations, which have been used in previous laboratory studies (e.g. Chaplin and Little Manitou; Bowen et al., 1988). Additional lakes were sampled because they were encountered during ground surveys of Piping Plover (*Charadrius melodus*) and other waterbirds for a separate study. Finally, other lakes were visited because their saline nature was evident from inspection on Google Earth (<https://earth.google.com>), with distinctive white soils around the water edge indicating crystallization of saturated salts. Many of our study lakes are previously undocumented, despite previous inventories of the worldwide distribution of *Artemia* (Muñoz & Pacios, 2010). Our sampling was not exhaustive and additional unknown populations of *Artemia* are likely to occur in Saskatchewan. Saline lakes of the Canadian prairies are unaffected by commercial exploitation and export of *A. franciscana* cysts,



and the harsh climate makes aquaculture unviable, although adult *Artemia* have been harvested in Chaplin Lake and some other lakes (Hammer, 1986).

### ***Sampling***

Shorelines were visited during daylight by public access roads and the water column was inspected for brine shrimps, especially on the side where winds concentrated them along the shoreline by wave action. Where present, shrimps were collected with a hand net then placed in alcohol for later confirmation of species identification. At the same time, the shoreline was inspected for concentrations of cysts that form masses at the water's edge or at the high water mark. These cysts were collected in 200 ml plastic bottles, then later washed in distilled water before desiccation for better storage. A water sample was also collected close to the shoreline in 200 ml plastic bottles which were stored in a refrigerator for 1-6 weeks before they were analyzed for major ion chemistry. Lake surface area was estimated from Google Earth (2012). Waterbirds were present in all lakes at the time of visit (details available on request). Lakes used in this study were separated from each other by up to 413 km.

### ***Water chemistry analysis***

Alkalinity (Alk) was determined by sulfuric-acid titration, and concentrations of other major ions were measured by ion-exchange chromatography after diluting brine samples to a suitable concentration range.

Based on these measured parameters, we selected key descriptors of the variation between lakes based on process-based understanding of hydrology and geochemistry of saline lakes in the region (e.g., Bentley et al.(2016); Last & Ginn (2005)). These descriptors were  $\text{SO}_4$  concentration, and the ratios  $\text{Cl}/\text{SO}_4$ ,  $\text{Alk}/\text{SO}_4$ , and  $\text{Alk}/(\text{Ca} + \text{Mg})$ .

Lake salinity is primarily controlled by the degree of evaporative enrichment of sulfate, which is sourced by the weathering of sulfide minerals (e.g. pyrite) contained in glacial till (Nachshon, Ireson, van der Kamp, & Wheeler, 2013; Van Stempvoort, Hendry, Schoenau, & Krouse, 1994). Evaporative enrichment is greater in closed-basin lakes with higher water inputs by surface runoff and groundwater discharge (Wood & Sanford, 1990). Sulfate concentration is a useful indicator of enrichment to a point where the saturation of mirabilite ( $\text{Na}_2\text{SO}_4 \cdot 10\text{H}_2\text{O}$ ) is reached. Further enrichment increases relative concentration of Mg compared to other cations. If the original composition of water has relatively high alkalinity, the geochemical evolution of water takes a path that is on the alkalinity side of the chemical divide (Hardie & Eugster, 1970). In contrast, originally alkalinity-poor water will take a path on the other side of the chemical divide characterized by high alkaline earth concentrations. Therefore, alkalinity/(Ca + Mg) ratio and alkalinity/ $\text{SO}_4$  ratio may be useful for describing the geochemical evolution of saline lakes. Some saline lakes in Saskatchewan (including one in our study, PAT) receive brines from potash mines that contain high concentrations of chloride. Therefore Cl/ $\text{SO}_4$  ratio is useful for distinguishing the effects of artificial inputs of chloride.

### ***mtDNA genotyping***

DNA was extracted from cysts sampled from 12 lakes (Table S1) in the study area using the Hotshot protocol (Montero-Pau, Gomez, & Muñoz, 2008). Two additional populations from two British Columbia lakes sampled in 2011 that belong to a lineage from the other side of the Continental Divide that includes populations of the Great Salt Lake, Utah, and San Francisco Bay (BCO and PCB, Table S1, Fig. S1) were included as outgroup in the haplotype network construction. We used *Artemia*-specific primers 1/2C01\_Fol-F and 1/2C01\_Fol-R

(Muñoz et al., 2008) to amplify a 709 bp fragment of the mitochondrial cytochrome *c* oxidase subunit 1 gene (CO1). Amplifications were performed in 20 µL total volume containing 1X reaction buffer, 2.0mM MgCl<sub>2</sub>, 0.2mM dNTPs, 0.6 units Taq DNA polymerase (Bioline Corp.) and 0.5µM of each primer. PCR conditions were as follows: 94°C for 3 min, followed by 35 cycles of 45 s at 94°C, 60 s at 45°C (60-64°C for 16S locus), and 60 s at 72°C, followed by 5 min at 72 °C. Quality of sequences was checked manually and consensus sequences were obtained and aligned in BioEdit v. 7.1.9 (Hall, 1999). The total number of newly obtained sequences varied between 16 and 24 per lake for 12 lakes. All corresponding haplotypes were deposited in NCBI GenBank (Accession numbers: MW799827-MW799878).

### ***Nuclear microsatellite (nSSR) genotyping***

DNA extractions were carried out on individual cysts (previously rinsed in distilled water) from each population making use of the HotSHOT protocol (Montero-Pau et al., 2008). The cysts were collected from *Artemia franciscana* populations of 14 lakes in Saskatchewan, Canada (Table 1, Table S1). We amplified eight nuclear microsatellite loci (in the following nSSR or simple sequence repeats) using the primer pairs described in Muñoz, Green, Figuerola, Amat, & Rico (2009) (Af\_B109, Af\_A108, Af\_B9, Af\_B139, Af\_B117, Af\_A136, Af\_A104). The locus Af\_B11 (Muñoz et al., 2009) was initially included but was dropped because its amplification failed in > 200 individuals. The results from the genotype accumulation curve computed with the R package *poppr* 2.8.3 (Kamvar, Tabima, & Grünwald, 2014) suggest that a full resolution of the multi-locus genotypes (MGLs) was already achieved by including only five loci (Fig. S2). We thus decided to use a higher number of genotyped individuals with the trade-off of removing locus Af\_B11, yielding data from 592 individuals in total. Following tests for Hardy-

225 Weinberg equilibrium (HWE) (see below) we excluded two additional loci (Af\_B117,  
226 Af\_A136) which deviated from HWE in all or almost all studied populations (Table S3) .  
227 Therefore, throughout the paper, we report results for the five nSSR loci Af\_B109,  
228 Af\_A108, Af\_B9, Af\_B139, Af\_A104). All included loci were polymorphic and their allelic  
229 richness was between 21 and 48 alleles (Table S4).

230

### 231 ***Statistical analysis***

232 All R packages used for data analyses described in this section were run in R version  
233 3.6.2 (R Core Team, 2019).

234

235 *Environmental variables.* In order to quantify and visualize how the environment  
236 available to *Artemia franciscana* differed between individual lakes, Principle Component  
237 Analysis (PCA) was performed with R package *vegan* 2.5.6 (Oksanen et al., 2019) and  
238 plotted with the `autoplot()` function of *ggplot2* (Wickham, 2016). The PCA included the  
239 following variables: lake surface area, SO<sub>4</sub>, and the ratios Cl/SO<sub>4</sub>, Alk/SO<sub>4</sub>, and Alk/(Ca  
240 +Mg).

241 *mtDNA.* To analyze mtDNA, we supplemented the haplotype dataset newly sequenced in  
242 this study, with haplotypes that were previously reported from four of our study lakes  
243 (MAN, CHA, MEA and MUS), based on earlier sampling in 2009 (Muñoz et al., 2013). The  
244 entire dataset used for the current study therefore included 65 haplotypes in total: 52  
245 haplotypes newly detected in the present study, three haplotypes recorded both in the  
246 present study and in Muñoz et al. (2013) and 10 additional haplotypes only reported in  
247 Muñoz et al. (2013). Details on sample size and haplotypes can be found in Table S1 in  
248 supplementary material.

A haplotype network was generated using TCS 1.21 (Clement, Posada, & Crandall, 2000) at the 95% connection limit. This network includes 12 lake populations from Saskatchewan and two lake populations from British Columbia. Genetic diversity within lakes was characterized by the number of private haplotypes (haplotypes found only in one location), standard diversity indices of haplotype diversity  $h$  and nucleotide diversity  $\pi$  (Nei 1987) calculated in Arlequin v. 3.5 (Excoffier & Lischer, 2010) and DnaSP v.5 (Librado & Rozas, 2009). Pairwise  $\Phi_{ST}$  with Tamura & Nei (TrN) distances and their statistical significance (10,000 permutations) were performed in Arlequin v. 3.5. An analysis of molecular variance (AMOVA) was conducted to determine the hierarchical structure of CO1 variation (Excoffier, Smouse, & Quattro, 1992). This analysis was performed with the aforementioned substitution model with 10,000 random permutations in Arlequin and based on the groups of populations that were not significantly genetically differentiated according to pairwise  $\Phi_{ST}$  (Group 1: BEN, BES, WHI, FRE, CHA; Group 2: AKE; Group 3: EIN, LYD, MAN, MUS, PAT, MEA). We tested three hierarchical levels: between groups, between populations within groups, within populations.

*Microsatellite (nSSR) markers.* To estimate null allele frequencies, we used the software FreeNA (Chapuis & Estoup 2007) that follows the Expectation Maximization (EM) algorithm of Dempster, Laird, and Rubin (1977) (detailed in Chapuis & Estoup 2007). Hardy-Weinberg equilibrium was tested with the function `hw.test()`, computing an exact test based on 5000 Monte Carlo permutations of alleles. This function is implemented in the R package *pegas* 0.14 (Paradis 2010). Results were corrected for multiple comparisons using the method of Holm (1979), a less conservative modification of the Bonferroni test. Total allelic richness per populations was computed by rarefaction implemented in the R package *PopGenReport* 3.0.4 (Adamack & Gruber 2014). The population with the smallest number of individuals genotyped for nSSRs (SHO, 8

274 individuals) was excluded from the rarefaction procedures and the second smallest  
 275 population size (GUL,  $n = 21$  individuals) applied as the smallest size for rarefaction.  
 276 Multilocus genotype diversity  $H$  (Shannon-Wiener diversity (Shannon, 1948)) was  
 277 computed with the R package *poppr* 2.8.3 (Kamvar et al., 2014). Locus- and population-  
 278 specific allele number and number of private alleles per population was calculated with  
 279 *poppr* 2.8.3 (Kamvar et al., 2014).  
 280 For pairwise population genetic distances, we computed Weir's (1996)  $F_{ST}$  using FreeNA  
 281 (Chapuis & Estoup 2007). This software provides a correction of the bias induced by null  
 282 alleles following the method described in Chapuis & Estoup (2007). We calculated  
 283 pairwise population  $D_{EST}$  with GenAlEx 6.502 (Peakall & Smouse, 2012) with associated  
 284 p-values based on 999 permutations.  
 285 To further explore the population structure suggested by pairwise population distance,  
 286 we applied discriminant analysis of principal components (DAPC) implemented in the  
 287 package adegenet 2.1.3 (Jombart 2008), a model-free analysis that makes no prior  
 288 assumptions about population genetic processes (such as HWE). We used the function  
 289 `xvalDAPC()` to find the optimum number of PCs to be retained prior to their use in the  
 290 final discriminant analysis, which we performed with the first 40 PCs and the first five  
 291 discriminant functions. We specified the 14 study populations as *a priori* groups to  
 292 analyse population membership probabilities for each individual.  
 293 *Distance-based redundancy analysis (dbRDA)*: To test for the importance of isolation by  
 294 environment (IBE) vs. isolation by distance (IBD), we performed dbRDA with functions  
 295 implemented in the R package *vegan* 2.5.6 (Oksanen et al., 2019).  
 296 We used genetic distance estimators (pairwise  $D_{EST}$  for nSSR markers and pairwise  $\Phi_{ST}$   
 297 for mtDNA) as dependent variables. To test the effect of individual environmental  
 298 variables (the same ones as used in the above PCA) on population differentiation, we

299 built the null model (genetic differentiation  $\sim 1$ ) and the full model (genetic  
 300 differentiation  $\sim \text{Area} + \text{SO}_4 + \text{Cl}/\text{SO}_4 + \text{Alk}/\text{SO}_4 + \text{Alk}/\text{Ca}+\text{Mg}$ ) using the function  
 301 `capscale()`. Both the null model and the full model were used as input to the forward  
 302 selection model choice (on adjusted  $R^2$  and p-values) with the function `ordiR2step()`  
 303 with 999 permutations. Model choice was repeated 100 times to obtain robust results.  
 304 To test the effect of spatial configuration, we computed distance-based Moran's  
 305 Eigenvector Maps (dbMEMs, previously known as PCNMs) using the R package  
 306 *adespatial* 0.3.7 (Dray et al., 2019) and chose the dbMEMs with associated Moran's I  
 307 values larger than expected under the null hypothesis of no spatial autocorrelation  
 308 (here: the first three dbMEMs: MEM1, MEM2, MEM3). For dbRDA, the null model was  
 309 tested against the full spatial model (genetic differentiation  $\sim \text{MEM1} + \text{MEM2} + \text{MEM3}$ )  
 310 using the forward selection model choice as described above.

311 *Network analysis.* To visualise the connectivity (as a proxy for gene flow) between  
 312 populations based on nSSR loci, we constructed a network graph using EDENnetworks  
 313 version 2.18 (Kivelä, Arnaud-Haond, & Saramäki, 2015) with manual thresholding,  
 314 based on  $F_{ST}$  corrected for null alleles obtained by FreeNA as described above. Manual  
 315 thresholding was performed at different values (0.02, 0.03 and 0.05) for visualisation of  
 316 possible population clusters under different threshold scenarios. Analysis of molecular  
 317 variance (AMOVA) for nSSR markers was used to test the significance of the population  
 318 structure suggested by the lowest threshold (0.02). Three hierarchical levels were  
 319 tested: (1) between 6 individual populations and two multi-population groups: AKE  
 320 (group1), WHI (group2), MUS (group3), MAN (group4), PAT (group5), FRE (group6),  
 321 BEN + BES (group7) and EIN + LYD + CHA + GUL + FRS + SHO (group8), (2) between  
 322 populations within groups, and (3) within populations. AMOVA was calculated using the

R package *ade4* 1.7-13 implemented in *poppr* 2.8.3 (Kamvar et al., 2014). Statistical significance of variance components was tested by permutation tests (999 permutations).

## Results

### *Study sites – spatial distribution, lake size and hydrochemical properties*

The 15 Saskatchewan saline lakes included in the genetic analysis spanned over a range of 2.63° in latitude, 3.93° in longitude, and were separated by distances of up to 410 km. Their spatial distribution was represented as Moran Eigenvectors for further analysis (Fig. S3). Their surface area ranged from 0.14 to 29.6 km<sup>2</sup> (Table 1). We obtained hydrochemical data for 13 of the lakes, including those for which nSSR data are available (with the exception of FRE and SHO, Table S2). The total dissolved solids of the 13 lake water samples ranged from 13 to 207 g L<sup>-1</sup>, which were roughly proportional to SO<sub>4</sub> concentrations, except for PAT (see below).

A Principal Component Analysis (PCA) including SO<sub>4</sub> meq, the ratios Cl/SO<sub>4</sub>, Alk/SO<sub>4</sub>, Alk/(Ca+Mg) and lake area explained 68.9% of the environmental variation between lakes between the first two components (Fig. 1). Two lakes were clearly separated from the other sites: PAT was the site of a Potash mine and was associated with high values of Cl/SO<sub>4</sub>, whereas AKE had particularly high Alk/(Ca+Mg). GUL was also hydrochemically separated from other lakes by a positive association with Alk/SO<sub>4</sub>. There was a tendency for greater lake area to be associated with higher SO<sub>4</sub> (Fig. 1): MUS and WHI were among the largest lakes, and also had high SO<sub>4</sub>.



### *Haplotype and allelic diversity*

We identified a total of 52 new haplotypes in the sampled lakes. Of these, seven were unique to the British Columbia locations. Three additional haplotypes were also reported in a previous study, that also recorded 10 additional haplotypes not found in our study (Muñoz et al., 2013). To construct the haplotype network and for all other mtDNA analyses below, we included haplotype data from these authors (details in Table S6).

Three star-like CO1 haplogroups formed by a total of 65 haplotypes exist in the Saskatchewan area, each with several additional haplotypes of low frequency (Fig. 2). These three main groups were centered on two haplotypes also recorded by Muñoz et al. (2013) (Af\_35, Af\_41, Group A and C in Fig. 2) and a newly detected haplotype (Hap\_05, Group B). Overall, separation from the British Columbia haplotypes involved about 4-8 mutations, while haplotypes within Saskatchewan were not strongly differentiated (the two main haplotypes differed only by one mutation).

Diversity patterns differed between CO1 and nSSR markers (Table 1): CO1 haplotype diversity ranged from 0.000 (PAT) to 0.779 (AKE). For nSSR, rarefied allelic richness was between 26.3 (PAT) and 54.9 (FRS). Diversity of multilocus genotypes H ranged from 2.493 (GUL) to 3.493 (EIN). No linear relationships were detected between allelic or haplotype diversity and lake area (Table S7).

### *Population genetic structure in geographic and environmental space*

There was significant structure between groups of populations according to the mitochondrial CO1 gene (Table 2) with two main groups (BEN, BES, FRE, WHI, CHA, and LYD, EIN, MAN, MUS, MEA, PAT), each of which was dominated by one of the two main haplotypes. Differentiation between members of these two groups was strong, with

pairwise  $\Phi_{ST}$  values between 0.548 and 0.891. AKE (with the greatest haplotype diversity) was significantly differentiated from all other populations. An AMOVA of mtDNA based on the above mentioned three groups confirmed that the variation was highest between groups (68%), and much smaller between populations within groups (1.37%). Within population variation was 31% (Table 3a).

While the pattern of differentiation was different from that of mitochondrial markers, we also detected significant genetic differentiation between populations according to pairwise  $D_{EST}$  based on nSSR loci (Table 2), ranged from -0.007 (between BEN and BES) and 0.418 (between MUS and AKE).

Network visualisation based on  $F_{ST}$  corrected for null alleles (Table S5) revealed a topology with two network components at a threshold of 0.02 (Fig. 3a). One included EIN, LYD, GUL, CHA, FRS and SHO (some of which were well separated in space), while the second included BES and BEN (which were closer together). The other five populations remained disconnected at this threshold. A gradual increase of the threshold led to higher complexity of the networks (Fig. 4b and c) with increasing connectivity between the two clusters identified in Fig. 4a. However, AKE, WHI, PAT, MAN and FRE remained separated even at the highest threshold. Using the two network components identified at a threshold of 0.05, we found that genetic diversity (rarefied allelic richness of nSSR loci) differed between connected and disconnected nodes (1-way ANOVA:  $F_{(1,11)} = 17.3$ ,  $p = 0.002$ ) (Fig. 4d). This analysis suggested that populations within a network component were genetically more diverse (median = 50.44, SD = 4.41) than separated populations (median = 40.54, SD = 6.46).

The population groups identified from the network analysis at a threshold of 0.02 (Fig. 3a) were tested by AMOVA (Table 3b). The results were significant for all strata, but by far the highest amount of variation was found within individual populations (83.50%).

Variation between groups of populations was 14.09%, suggesting a different pattern than that seen in mtDNA, as also suggested by the differences in group composition (e.g. the nearby BEN and BES group together with the more distant CHA and FRE by CO1, yet they form a separate group according to nSSR). Genetic variation of nSSR was lowest between populations within groups (6.09%).

To analyse environmental conditions and spatial configuration of sample sites that might underlie the observed genetic structure, we performed dbRDA using pairwise genetic distance ( $\Phi_{ST}$  for the mitochondrial CO1 data,  $D_{EST}$  for nSSR loci, Table 2) as independent variables. No significant relationship was detected for mtDNA for either spatial or environmental variables. In contrast, for nSSR markers the forward selection model choice found strong and significant relationships with the ratio Alkalinity/(Ca +Mg) but not with spatial configuration. Alkalinity/(Ca +Mg) was significant in 87 of 100 repeats of the model choice ( $p \leq 0.05$ ), explaining 30% of the observed genetic variation with a mean p-value of 0.04 (Table 4).

A discriminant analysis of principal components (DAPC, Fig. 4) of nSSR markers revealed a population genetic structure with six comparatively well-defined populations in which the majority of individuals were assigned to their respective population of origin (AKE, WHI, PAT, MUS, FRE and MAN), echoing the unconnected network nodes in Fig. 3. A considerable amount of admixture is suggested for other populations where EIN, LYD, GUL, CHA and FRS had higher membership probabilities for one of the westernmost populations while MUS, BEN and BES showed a high degree of admixture among themselves.

## **Discussion**

As an important species for aquaculture, *Artemia franciscana* occurs widely outside its native distribution in North America. It is highly invasive, rapidly outcompeting native *Artemia* species. Invasive populations generally originate from commercially harvested cysts from the Great Salt Lake and San Francisco Bay, or secondary introductions from China (Amat et al., 2005; Horváth et al., 2018). In contrast, this species has rarely been studied in other areas of its native distribution, where it inhabits natural saline lakes with a wide range of hydrochemistries in particular regarding salt composition (Bowman & Sachs, 2008). In order to identify the roles of IBE and IBD in driving spatial genetic structure of *A. franciscana* in the saline lakes of Central Canada, we applied mitochondrial and nuclear markers to 14 lake populations in the Saskatchewan prairies. We found significant genetic structure between the Saskatchewan populations in both marker systems, and a strong relationship between the divergence pattern observed by nSSR markers and the hydrochemical environment of the lakes. The mtDNA patterns observed are likely to reflect historical patterns of lake colonization, especially when lakes were formed after deglaciation, and then became saline enough to provide suitable habitat for *A. franciscana*, a species associated with higher salinities than all other anostracans in North America (Rogers, 2014a, 2014b). In the unique case of Patience (PAT), a lake contaminated with chloride by potash mining, colonization may have occurred in modern times after mining began. The presence of only one haplotype in PAT, combined with its unique pattern of nuclear markers, suggests strong and rapid local adaptation to these unusual chemical conditions absent from our other study sites, which were lakes in a more natural condition.

*What mitochondrial markers reveal*

For lakes other than PAT, our results suggest a close relationship of colonization by *Artemia* and deglaciation after the last glacial period, which first opened up habitat alongside the southwestern border of the ice sheet (14,000y BP). Under such a scenario, the area may first have been colonized in the western area by individuals originating from ice-free saline lake populations further to the west or south, such as Alberta or the USA. From the four western-most Saskatchewan populations (AKE, EIN, WHI, LYD), which hold all three haplotype groups identified in this study, dispersal may have proceeded towards the newly opened south-eastern habitats, subsequently colonized by one of the main haplotype groups (group C). Later, as the glacier retreated northeastwards and aquatic habitat opened towards the east in Saskatchewan, these northern lakes were largely colonized by the second main haplotype group (group A). Initial colonization by the two main haplotypes was followed by haplotype diversification, consistent with the observed star-like network pattern. After the area was ice-free in the next 1000 years (Christiansen, 1979), additional dispersal from the southern and western areas may have allowed colonization of these postglacial lakes. While this proposed sequence for colonization is consistent with the haplotype pattern observed in this study, it would require further study by including more *A. franciscana* populations from additional lakes in Saskatchewan and to the west in Alberta. Future sampling should also include populations further south in the Great Plains bioregion of the USA (Rogers, 2014b) to test the possibility that dispersal towards the northern areas may have followed the retreating ice sheet, and originated from regions south of Saskatchewan.

*What nuclear markers reveal*

469 In contrast, nSSR markers showed significant patterns of Isolation by Environment  
470 (IBE), explaining ~30% of the variation in the genetic structure, but unrelated to  
471 geographic configuration of the sampled lakes. The observed patterns are indicative of  
472 local adaptation to the environment according to the criteria detailed in Orsini et al.  
473 (2013). Since *Artemia* produces vast egg banks in established populations, ecological  
474 and genetic priority effects occurring soon after initial colonisation and subsequent  
475 monopolisation effects (De Meester, Gómez, Okamura, & Schwenk, 2002, De Meester,  
476 Vanoverbeke, Kilsdonk, & Urban, 2016) may have reinforced such a pattern, including  
477 the lack of a spatial signal that could be related to such priority effects. Our evidence for  
478 IBE suggests that bird-mediated dispersal of cysts between lakes differing markedly in  
479 hydrochemistry may not be effective (i.e. will not lead to colonization and establishment  
480 in the new location). Laboratory tests show that nauplii larvae fail to reach adulthood  
481 when placed in brine of unsuitable ionic composition (Bowen et al., 1988), and that cyst  
482 hatching rates are sensitive to metal concentrations (Brix et al., 2006).

483 In several cases, strong differentiation is highly consistent with local adaptation to  
484 extreme hydrochemical conditions, notably in PAT and AKE, but also in WHI, which had  
485 the highest SO<sub>4</sub> concentrations in our study. In contrast to the mitochondrial data, nSSR  
486 markers revealed that PAT was a highly divergent population, strongly related to an  
487 elevated Cl/SO<sub>4</sub> ratio resulting from potash mining. Similarly, in AKE, this was related to  
488 a particularly high Alkalinity/(Ca+Mg) ratio. Adaptation of different *A. franciscana*  
489 populations to specific ion concentrations was demonstrated in the laboratory by  
490 Bowens et al. (1988), leading to ecological isolation of individual populations and an  
491 inability to colonize other lakes with divergent chemistry. This is also consistent with  
492 the apparent influence of geochemistry on the evolution and distribution of different  
493 anostracan taxa in North America (Rogers, 2014a). Since the nSSR markers are

494 essentially neutral, to the extent that lakes have similar genetic diversity due to similar  
495 hydrochemistry, this cannot simply reflect convergent selection on genes for  
496 osmoregulation or other key physiological processes. Instead, the genetic structure is  
497 likely to reflect contemporary gene flow, which is inhibited by divergent chemistry but  
498 promoted by a close spatial relationship between lakes.

499 Network analysis revealed a high connectivity between many populations, reflecting  
500 their genetic similarity for nuclear markers. Together with PAT and AKE, a strongly  
501 isolated population was FRE, which is surprising since this population is adjacent to FRS  
502 and only isolated from it by a dam which also serves as a road. This creates two of  
503 several separate sub-basins in Frederick Lake used for the extraction of sodium sulfate  
504 via evaporation. The first basin (FRE) discharges water to FRS, which is a closed basin  
505 with no surface water outlet. As a result, the water in FRE is expected to be less saline  
506 compared to the concentrated brine in FRS, although we have no chemistry data for FRE.

507 Elsewhere, BES and BEN were also separated by a road, but were not differentiated  
508 genetically, and had rather similar hydrochemistry, as they were parts of a larger lake  
509 connected by culverts under the road.

510 Other lakes that were relatively isolated according to network analysis were WHI  
511 (which was characterised by the highest  $\text{SO}_4$  concentrations) and MAN. It is possible that  
512 connectivity (i.e. genetic similarity) is influenced by the extent of interchange of  
513 migratory birds between lakes. The most important site for waterbirds is CHA, which is  
514 protected as a Ramsar site in recognition of the major concentrations of shorebirds it  
515 holds. CHA was a central node in the network, connected with more populations in the  
516 network than any other lake. On the other hand, adequate data on bird movements  
517 between our study lakes do not exist, but our bird counts (AJ Green, unpublished data)  
518 would suggest that WHI and MAN should be reasonably well-connected via waterbirds

with other lakes. WHI held thousands of Wilson's phalaropes *Phalaropus tricolor* which were feeding on *Artemia* and are likely to be excellent vectors for their dispersal. Hatching of nauplii from faeces collected at Frederick Lake from the American avocet *Recurvirostra americana* during the course of this study confirmed the internal transport of viable *A. franciscana* cysts in our study area (AJG, unpublished data). We did not find evidence that lake area significantly affected genetic diversity. However, network analysis showed that there is greater genetic diversity in highly connected populations than in the less connected populations, and future research could test whether this reflects movement patterns of birds between lakes. Outside of migratory periods, waterbirds will generally provide higher connectivity for sites that are close together, and hence coincide within the home range of more individual birds (Green et al., 2002).

### *Conclusions*

Saline lakes of Saskatchewan provide a fascinating insight into the population genetics of *Artemia* under natural conditions. The importance of IBE in this keystone crustacean was only apparent as a consequence of our unusual application of hydrochemical analysis. Studies of the population or invasion genetics of aquatic invertebrates in inland waters typically limit their analyses of water quality to conductivity or salinity, and few if any have gone into as much detail about ionic composition as in our study. More frequent collaborations between hydrogeologists and molecular ecologists are recommended. Although many of the sites occupied by other *Artemia* species in different continents are coastal lagoons and salt ponds that are likely to have little diversity in salt composition, many others are inland salt lakes (Muñoz & Pacios, 2010) that may be hotspots of genetic diversity associated with local adaptation to unique chemical conditions. On the other hand, the *Artemia* populations in such inland lakes



(e.g. *A. sinica* and *A. tibetiana* populations, Lin et al., 2017) may be resistant to invasion by *A. franciscana* populations originating from aquaculture, owing to contrasting hydrochemistry.

## **Acknowledgements**

Robert G. Clark hosted AJG and provided vital assistance during sampling. Cysts from BC were kindly provided by Curtis A. Suttle, Amy M. Chan and Allyson L. Brady. Funding was provided by Spanish National Plan projects CGL2010-16028 and CGL2016-76067-P (AEI/FEDER, EU), and the PICS program funded by CSIC (PIC2015FR4) in Spain and CNRS (PICS07360) in France. DF received funding from the European Union's FP6-MOBILITY programme under the Marie Skłodowska Curie grant agreement No. 40285. AJG was also supported by mobility grants from the Spanish Ministry of Science and Innovation (PR2008-0293) and the Spanish Ministry of Education (PR2010-0602). Additional support was provided by Canadian Wildlife Service.

## *Data availability statement*

Sequence data that support the findings of this study are available in NCBI GenBank, accession numbers MW799827-MW799878. Hydrochemical data is made available at digital.csic.es.

## References

- Adamack, A.T. & Gruber, B. (2014). PopGenReport: simplifying basic population genetic analyses in R. *Methods in Ecology and Evolution*, 5(4), 384-387.
- Amat, F., Hontoria, F., Ruiz, O., Green, A. J., Hortas, F., Figuerola, J., & Hortas, F. (2005). The American brine shrimp as an exotic invasive species in the western Mediterranean. *Biological Invasions*, 7(1), 37-47.
- Bentley, L. R., Hayashi, M., Zimmerman, E. P., Holmden, C., & Kelley, L. I. (2016). Geologically controlled bi-directional exchange of groundwater with a hypersaline lake in the Canadian prairies. *Hydrogeology Journal*, 24(4), 877-892. doi: 10.1007/s10040-016-1368-0
- Bidwell, M. T., Green, A. J., & Clark, R. G. (2014). Random placement models predict species-area relationships in duck communities despite species aggregation. *Oikos*, 123(12), 1499-1508. doi: 10.1111/oik.00821
- Bohonak, A. J. (1999). Dispersal, gene flow, and population structure. *Quarterly Review of Biology*, 74(1), 21-45.
- Bowen, S. T., Buoncristiani, M. R., & Carl, J. R. (1988). *Artemia* habitats: Ion concentrations tolerated by one superspecies. *Hydrobiologia*, 158(1), 201-214. doi: 10.1007/BF00026278
- Bowman, J. S., & Sachs, J. P. (2008). Chemical and physical properties of some saline lakes in Alberta and Saskatchewan. *Saline Systems*, 4(1), 3. doi: 10.1186/1746-1448-4-3
- Brix, K. V., Gerdes, R. M., Adams, W. J., & Grosell, M. (2006). Effects of Copper, Cadmium, and Zinc on the Hatching Success of Brine Shrimp (*Artemia franciscana*). *Archives of Environmental Contamination and Toxicology*, 51(4), 580-583. <https://doi.org/10.1007/s00244-005-0244-z>
- Chapuis, M.P., & Estoup, A. (2007). Microsatellite null alleles and estimation of population differentiation. *Mol. Biol. Evol.* 24(3): 621-631.
- Christiansen, E. A. (1979). Wisconsinan deglaciation of southern Saskatchewan and adjacent areas. *Can J Earth Sci*, 16(4), 913-938. doi: 10.1139/e79-079
- Clement, M., Posada, D., & Crandall, K. A. (2000). TCS: A computer program to estimate gene genealogies. *Molecular Ecology* 9(10), 1657-1659. doi: 10.1046/j.1365-294X.2000.01020.x
- D'Amen, M., Mod, H. K., Gotelli, N. J., & Guisan, A. (2018). Disentangling biotic interactions, environmental filters, and dispersal limitation as drivers of species co-occurrence. *Ecography*, 41(8), 1233-1244. doi: 10.1111/ecog.03148
- De Meester, L., Gómez, A., Okamura, B., & Schwenk, K. (2002). The Monopolization Hypothesis and the dispersal-gene flow paradox in aquatic organisms. *Acta Oecologica*, 23, 121-135.
- De Meester, L., Vanoverbeke, J., Kilsdonk, L. J., & Urban, M. C. (2016). Evolving Perspectives on Monopolization and Priority Effects. *Trends in Ecology and Evolution*, 31(2), 136-146. doi: 10.1016/j.tree.2015.12.009
- Demers, S. A., Colwell, M. A., Takekawa, J. Y., & Ackerman, J. T. (2008). Breeding stage

606 influences space use of female American avocets in San Francisco Bay, California.  
607 *Waterbirds*, 31(3), 365-371. doi: 10.1675/1524-4695-31.3.365

608 Dempster, A. P., Laird, N. M. & Rubin, D. B. (1977) Maximum likelihood from incomplete  
609 data via the EM algorithm. *Journal of the Royal Statistical Society B* 39:1-38.

610 Dray, S., Bauman, D., Blanchet, G., Borcard, D., Clappe, S., Guenard, G., ... Wagner, H. H.  
611 (2019). adespatial: Multivariate Multiscale Spatial Analysis. R package version 0.3-  
612 7.

613 Eimanifar, A., Marden, B., Braun, M. S., & Wink, M. (2015). Analysis of the genetic  
614 variability of *Artemia franciscana* Kellogg, 1906 from the Great Salt Lake (USA)  
615 based on mtDNA sequences, ISSR genomic fingerprinting and biometry. *Marine*  
616 *Biodiversity*, 45(2), 311-319. doi: 10.1007/s12526-014-0256-x

617 Eimanifar, A., Van Stappen, G., Marden, B., & Wink, M. (2014). *Artemia* biodiversity in  
618 Asia with the focus on the phylogeography of the introduced American species  
619 *Artemia franciscana* Kellogg, 1906. *Molecular Phylogenetics and Evolution*, 79, 392-  
620 403. doi: 10.1016/j.ympev.2014.06.027

621 Eimanifar, A., & Wink, M. (2013). Fine-scale population genetic structure in *Artemia*  
622 *urmiana* (Günther, 1890) based on mtDNA sequences and ISSR genomic  
623 fingerprinting. *Organisms Diversity and Evolution*, 13(4), 531-543. doi:  
624 10.1007/s13127-013-0135-5

625 Excoffier, L, Smouse, P. E., & Quattro, J. M. (1992). Analysis of Molecular Variance  
626 Inferred from Metric Distances among DNA Haplotypes - Application to Human  
627 Mitochondrial-DNA Restriction Data. *Genetics*, 131(2), 479-491.

628 Excoffier, Laurent, & Lischer, H. E. L. (2010). Arlequin suite ver 3.5: A new series of  
629 programs to perform population genetics analyses under Linux and Windows.  
630 *Molecular Ecology Resources*, 10(3), 564-567. doi: 10.1111/j.1755-  
631 0998.2010.02847.x

632 Green, A. J., Figuerola, J., & Sánchez, M. I. (2002). Implications of waterbird ecology for  
633 the dispersal of aquatic organisms. *Acta Oecologica*, 23, 177-189.

634 Hall, T. A. (1999). BioEdit: a user-friendly biological sequence alignment editor. *Nucleic*  
635 *Acids Symposium Series*.

636 Hammer, U. Theodore. (1986). Saline Lake Resources of the Canadian Prairies. *Canadian*  
637 *Water Resources Journal*, 11(1), 43-57. doi: 10.4296/cwrj1101043

638 Hammer, U.T. (1993). Zooplankton distribution and abundance in saline lakes of Alberta  
639 and Saskatchewan, Canada. *International Journal for Salt Lake Research*, 2(111-  
640 132).

641 Hardie, L., & Eugster, H. (1970). Evolution of closed-basin brines. *Mineral. Soc. Amer.*  
642 *Spec. Pap.* 3, 273-290.

643 Holm, S. (1979). A simple sequentially rejective multiple test procedure. *Scandinavian*  
644 *Journal of Statistics*, 6, 65-70.

645 Horváth, Z., Lejeusne, C., Amat, F., Sánchez-Fontenla, J., Vad, C. F., & Green, A. J. (2018).  
646 Eastern spread of the invasive *Artemia franciscana* in the Mediterranean Basin, with  
647 the first record from the Balkan Peninsula. *Hydrobiologia*. doi: 10.1007/s10750-

018-3683-z

- Jombart, T. (2008). adegenet: a R package for the multivariate analysis of genetic markers. *Bioinformatics*, 24, 1403-1405.
- Kamvar, Z. N., Tabima, J. F., & Grünwald, N. J. (2014). Poppr : an R package for genetic analysis of populations with clonal, partially clonal, and/or sexual reproduction. *PeerJ*, 2, e281. doi: 10.7717/peerj.281
- Kivelä, M., Arnaud-Haond, S., & Saramäki, J. (2015). EDENetworks: A user-friendly software to build and analyse networks in biogeography, ecology and population genetics. *Molecular Ecology Resources*, 15(1), 117-122. doi: 10.1111/1755-0998.12290
- Last, W. M., & Ginn, F. M. (2005). Saline systems of the Great Plains of western Canada: an overview of the limnogeology and paleolimnology. *Saline Systems*, 1, 10. doi: 10.1186/1746-1448-1-10
- Librado, P., & Rozas, J. (2009). DnaSP v5: A software for comprehensive analysis of DNA polymorphism data. *Bioinformatics*, 25(11), 1451-1452. doi: 10.1093/bioinformatics/btp187
- Libralato, G., E. Prato, L. Migliore, A. M. Cicero, and L. Manfra. 2016. A review of toxicity testing protocols and endpoints with *Artemia* spp. *Ecological Indicators* 69:35-49.
- Lin, Q., Xu, L., Hou, J., Liu, Z., Jeppesen, E., & Han, B.-P. (2017). Responses of trophic structure and zooplankton community to salinity and temperature in Tibetan lakes: Implication for the effect of climate warming. *Water Research*, 124, 618–629. <https://doi.org/https://doi.org/10.1016/j.watres.2017.07.078>
- Montero-Pau, J., Gomez, A., & Muñoz, J. (2008). Application of an inexpensive and high-throughput genomic DNA extraction method for the molecular ecology of zooplanktonic diapausing eggs. *Limnology and Oceanography-Methods*, 6, 218–222.
- Muñoz, J., Amat, F., Green, A. J., Figuerola, J., & Gómez, A. (2013). Bird migratory flyways influence the phylogeography of the invasive brine shrimp *Artemia franciscana* in its native American range. *PeerJ*, 1, e200. doi: 10.7717/peerj.200
- Muñoz, J., Gómez, A., Figuerola, J., Amat, F., Rico, C., & Green, A. J. (2014). Colonization and dispersal patterns of the invasive American brine shrimp *Artemia franciscana* (Branchiopoda: Anostraca) in the Mediterranean region. *Hydrobiologia*, 726(1), 25-41. doi: 10.1007/s10750-013-1748-6
- Muñoz, J., Gomez, A., Green, A. J., Figuerola, J., Amat, F., & Rico, C. (2008). Phylogeography and local endemism of the native Mediterranean brine shrimp *Artemia salina* (Branchiopoda : Anostraca). *Molecular Ecology*, 17(13), 3160–3177.
- Muñoz, J., Green, A. J., Figuerola, J., Amat, F., & Rico, C. (2009). Characterization of polymorphic microsatellite markers in the brine shrimp *Artemia* (Branchiopoda, Anostraca). *Molecular Ecology Resources*, 9(2), 547–550.
- Muñoz, J., & Pacios, F. (2010). Global biodiversity and geographical distribution of diapausing aquatic invertebrates: The case of the cosmopolitan brine shrimp, *Artemia* (Branchiopoda, Anostraca). *Crustaceana*, 83(4), 465-20.A. doi: 10.1163/001121610X489449

690 Nachshon, U., Ireson, A., van der Kamp, G., & Wheeler, H. (2013). Sulfate salt dynamics in  
691 the glaciated plains of North America. *Journal of Hydrology*, 499, 188-199. doi:  
692 10.1016/j.jhydrol.2013.07.001

693 Naihong, X., Audenaert, E., Vanoverbeke, J., Brendonck, L., Sorgeloos, P., & De Meester, L.  
694 (2000). Low among-population genetic differentiation in Chinese bisexual *Artemia*  
695 populations. *Heredity*, 84(2), 238-243. doi: 10.1046/j.1365-2540.2000.00664.x

696 Nosil, P., Egan, S. P., & Funk, D. J. (2008). Heterogeneous genomic differentiation  
697 between walking-stick ecotypes: 'Isolation by adaptation' and multiple roles for  
698 divergent selection. *Evolution*, 62(2), 316-336. doi: 10.1111/j.1558-  
699 5646.2007.00299.x

700 Oksanen, J., Blanchet, F. G., Friendly, M., Kindt, R., Legendre, P., McGlinn, D., ... Wagner, H.  
701 (2019). vegan: Community Ecology Package. R package version 2.5-6.

702 Orsini, L., Vanoverbeke, J., Swillen, I., Mergeay, J., & De Meester, L. (2013). Drivers of  
703 population genetic differentiation in the wild: Isolation by dispersal limitation,  
704 isolation by adaptation and isolation by colonization. *Molecular Ecology*, 22(24),  
705 5983-5999. doi: 10.1111/mec.12561

706 Ovaskainen, O., Tikhonov, G., Dunson, D., Grotan, V., Engen, S., Saether, B. E., & Abrego, N.  
707 (2017). How are species interactions structured in species-rich communities? A  
708 new method for analysing time-series data. *Proc Biol Sci*, 284(1855), 20170768. doi:  
709 10.1098/rspb.2017.0768

710 Paradis, E. (2010). pegas: an R package for population genetics with an integrated-  
711 modular approach. *Bioinformatics*, 26, 419-420.

712 Peakall, R., & Smouse, P. E. (2012). GenALEX 6.5: Genetic analysis in Excel. Population  
713 genetic software for teaching and research-an update. *Bioinformatics*, 28(19), 2537-  
714 2539. doi: 10.1093/bioinformatics/bts460

715 R Core Team (2019). (2019). R: A language and environment for statistical computing.  
716 Accessed 1st April 2019.

717 Reynolds, C., Miranda, N. A. F., & Cumming, G. S. (2015). The role of waterbirds in the  
718 dispersal of aquatic alien and invasive species. *Diversity and Distributions*, 21(7),  
719 744-754. doi: 10.1111/ddi.12334

720 Rogers, D. C. (2014a). Anostracan (Crustacea: Branchiopoda) zoogeography II. Relating  
721 distribution to geochemical substrate properties in the USA. *Zootaxa*, 3838(3), 1.  
722 doi: 10.11646/zootaxa.3856.1.1

723 Rogers, D. C. (2014b). Anostracan (Crustacea: Branchiopoda) zoogeography I. North  
724 American bioregions. *Zootaxa*, 3838(3), 251. doi: 10.11646/zootaxa.

725 Ruebhart, D. R., I. E. Cock, and G. R. Shaw. 2008. Brine shrimp bioassay: Importance of  
726 correct taxonomic identification of *Artemia* (Anostraca) species. *Environmental*  
727 *Toxicology* 23:555-560.

728 Sánchez, M. I., Hortas, F., Figuerola, J., & Green, A. J. (2012). Comparing the potential for  
729 dispersal via waterbirds of a native and an invasive brine shrimp. *Freshwater*  
730 *Biology*, 57(9), 1896-1903. doi: 10.1111/j.1365-2427.2012.02852.x

731 Sebastián-González, E., & Green, A. J. (2014). Habitat use by waterbirds in relation to

- pond size, water depth, and isolation: Lessons from a restoration in southern Spain. *Restoration Ecology*, 22(3), 311-318. doi: 10.1111/rec.12078
- Shannon, C. E. (1948). A Mathematical Theory of Communication. *Bell System Technical Journal* 27(3), 379-423. doi: 10.1002/j.1538-7305.1948.tb01338.x
- Van Stempvoort, D. R., Hendry, M. J., Schoenau, J. J., & Krouse, H. R. (1994). Sources and dynamics of sulfur in weathered till, Western Glaciated Plains of North America. *Chemical Geology*, 111(1-4), 35-56. doi: 10.1016/0009-2541(94)90081-7
- Wang, I. J., & Bradburd, G. S. (2014). Isolation by environment. *Molecular Ecology*, 23(23), 5649–5662. doi: 10.1111/mec.12938
- Weir, B. S. (1996). Genetic Data Analysis II. Sinauer Associates, Sunderland, Mass.
- Wickham, H. (2016). ggplot2 Elegant Graphics for Data Analysis (Use R!). In *Springer*. doi: 10.1007/978-0-387-98141-3
- Wissel, B., Cooper, R. N., Leavitt, P. R., & Pham, S. V. (2011). Hierarchical regulation of pelagic invertebrates in lakes of the northern Great Plains: A novel model for interdecadal effects of future climate change on lakes. *Global Change Biology*, 17(1), 172-185. doi: 10.1111/j.1365-2486.2010.02291.x
- Wood, W. W., & Sanford, W. E. (1990). Ground-water control of evaporite deposition. *Economic Geology*, 85(6), 1226-1235. doi: 10.2113/gsecongeo.85.6.1226
- Wright, S. (1943). Isolation by distance. *Genetics*, 28(28), 114–138.

## Figure captions

Fig. 1 Principal Component Analysis of environmental variables in Saskatchewan saline lakes. The percentage of total variation explained by the first two components is given on the respective axes.

Fig. 2. a) Haplotype network (mtDNA) for Canadian *Artemia franciscana* (includes CO1 haplotypes from Saskatchewan and British Columbia). Grey squares highlight the four main haplotype groups present in Saskatchewan. The top nodes of the network (grey shades) represent members of two populations (BCO, PBC) in British Columbia ~1000 km west of the Saskatchewan study area. Haplotype groups A–C are based on genetic differentiation between the populations that hold these haplotypes as identified by pairwise  $\Phi_{ST}$  and subsequent AMOVA (see Tables 2,3).  
b) Geographic distribution of haplotype groups A–C. Numbered arrows indicate the possible sequence of colonization after deglaciation (details in the text). Lines indicate the glacial border at 14,000y BP (blue), 12,500y BP (green, dotted) and 11,500y BP (red, hatched) (drawn after Christiansen, 1979). Scale is approximate, for exact distances between lakes see Table S8. Note: to avoid confusion between patterns of mitochondrial and nuclear markers, we applied different colour schemes in this figure and Fig. 4.

Fig. 3 a -d. EDENetwork for *Artemia franciscana* in Saskatchewan constructed from nSSR loci. Each population is positioned according to its geographical coordinates. Edges (connections between populations) are shown for three different thresholds at (a) 0.02,

(b) 0.03 and (c) 0.05, thus successively allowing weaker connections to connect nodes, adding complexity to the network. The thickness of edges is proportional to the genetic distance between populations, (thicker lines denoting less distance) while the size of nodes is relative to the number of connections between nodes. Green nodes have at least one connection, whereas red nodes are unconnected. (d) box plot (with median, comparing the genetic diversity (nSSR, AR = rarefied allelic richness) of connected (y) and isolated (n) populations (connections as in (a)). Dots represent measurements for each population, with outliers in red.

Fig. 4 a-b. a) Population genetic structure of *Artemia franciscana* according to DAPC based on nuclear markers (nSSR, see Methods for details). Each individual is represented by a vertical bar, coloured by estimated membership to one of the sampled populations. Posterior membership probability < 1.0 results in multiple assignments (and thus multi-coloured bars) per individual. Bars below the graph represent the dominant CO1 haplotype groups (A, B, and C, from Fig. 2) detected in each population (not available for GUL, FRE, SHO, denoted by "?"). Note: to avoid confusion between patterns of mitochondrial and nuclear markers, we applied different colour schemes in this figure and Fig. 2.

b) Map with sample locations and representation of the percentage of individuals from each lake assigned to each of the 14 populations (by DAPC). Scale is approximate, for exact distances between lakes see Table S8. Colour legend for both figures in 4b)

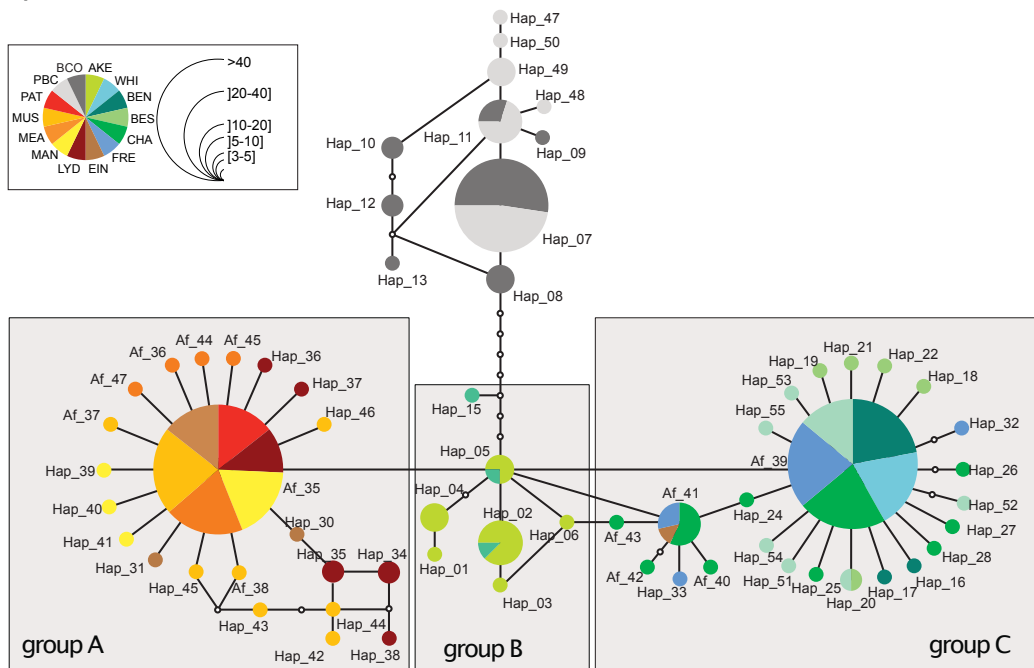
Fig. S1. Phylogenetic relationships of native *Artemia franciscana* COI haplotypes after Muñoz et al. [1] with two populations added from British Columbia, Canada, that were sampled in the present study (BCO, PBC). The evolutionary history was inferred using the Neighbor-Joining method. Results of bootstrap test (1000 replicates) are shown next to the branches [2]. The tree is drawn to scale, with branch lengths in the same units as those of the evolutionary distances used to infer the phylogenetic tree. The evolutionary distances were computed using the Maximum Composite Likelihood method [3] and are in the units of the number of base substitutions per site. Evolutionary analyses were conducted in MEGA7 [4]. Each lineage label (redrawn from [1]) indicates which countries it is found in and its overlap with the Pacific, Atlantic or Central migratory flyways for shorebirds (P, A or C respectively)

Fig. S2 Genotype accumulation curve

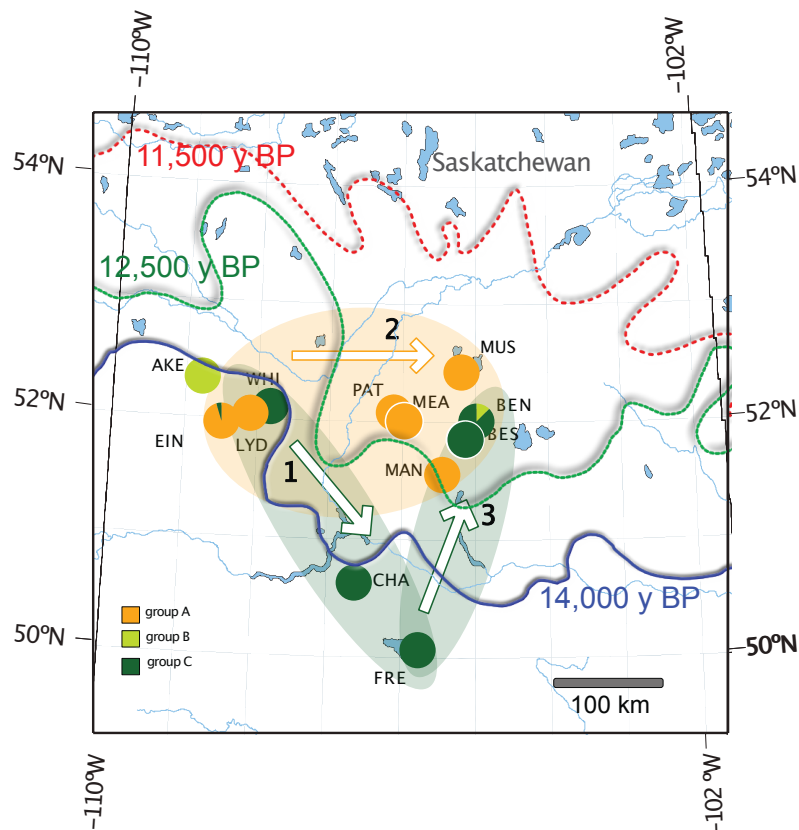
Fig. S3. Graphical representation of MEM1, MEM2 and MEM3, the distance based Moran Eigenvector Maps used as spatial predictors in the dbRDA. Size of circles represents absolute eigenvalues of each dbMEM (positive values: filled circles, negative values: open circles). Circles are positioned according to the latitude and longitude of individual saline lakes in Saskatchewan.

Fig. S4. Principal Coordinate analysis (PCoA), based on Jost's  $D_{est}$ . Populations are represented by STRUCTURE population clusters (K=3, based on nSSR markers See Fig. 3a for details).

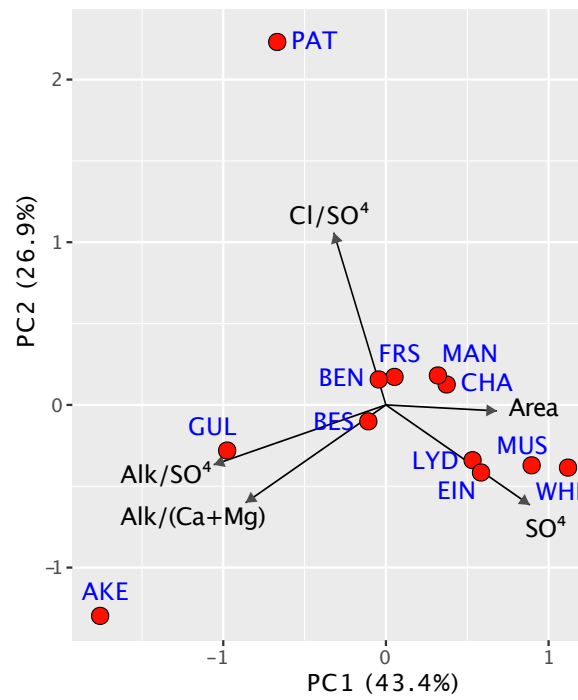
a)



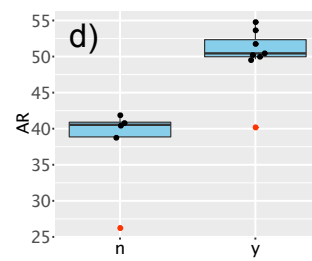
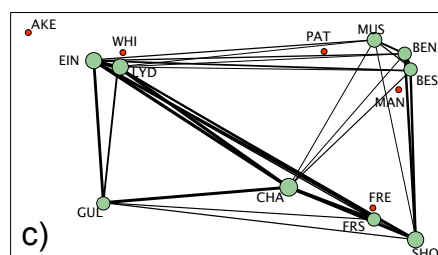
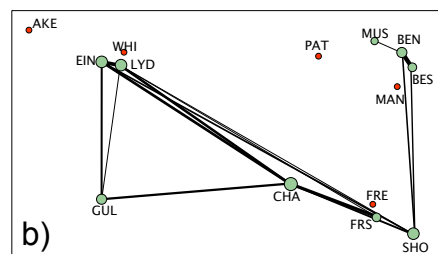
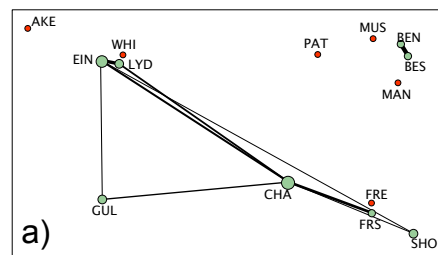
b)





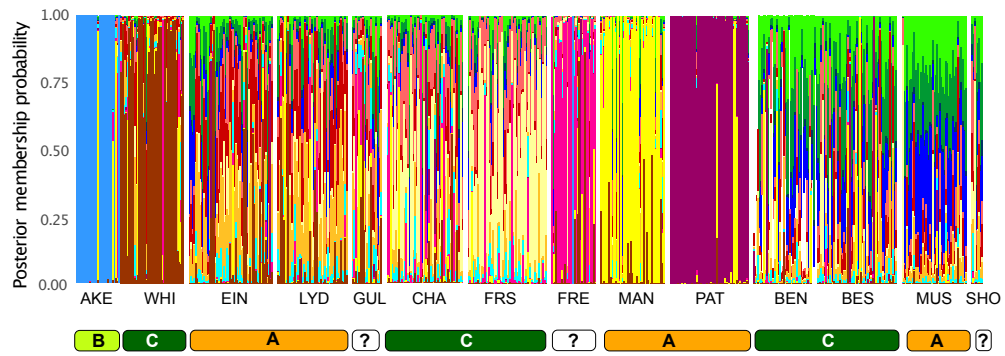


821

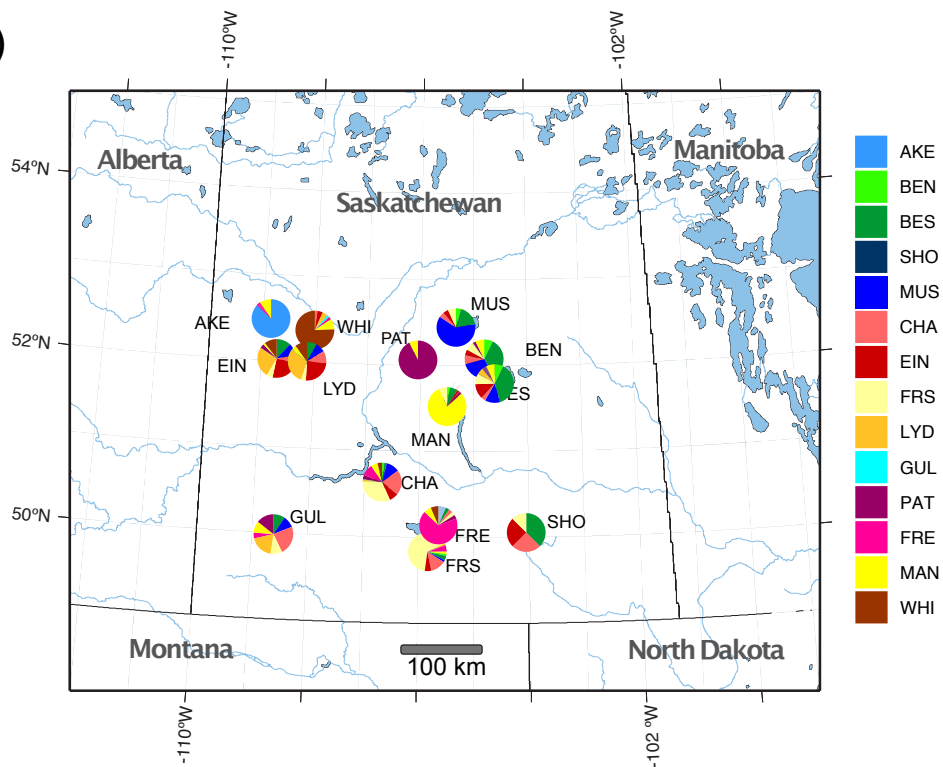


822

a)



b)



823

824

825 *Authors' contribution statement*

826

827 AJG conceived the study and collected samples. MTB collected samples. CL and JSF

828 generated the molecular data. MH generated and analysed the hydrochemical data. DF  
829 analysed the molecular data with CL and wrote the paper with AJG and input from all  
830 other authors.

831

832 *Conflict of interest*

833 The authors declare no conflict of interest.

834 TABLES

835 Table 1. Genetic diversity of 14 *Artemia franciscana* populations from Saskatchewan. For  
 836 nSSR markers (5 loci), rarefied total allelic richness (AR) is indicated as well as the  
 837 number of private alleles ( $A_p$ ) and the Shannon-Wiener index for multilocus genotypes  
 838 ( $H$ ). SHO is excluded here, as only 8 individuals were genotyped. For mtDNA, haplotype  
 839 diversity ( $h$ ), nucleotide diversity ( $\pi$ ) and the number of private haplotypes ( $h_p$ ) are  
 840 indicated. Lake size is given as surface area in km<sup>2</sup>.  
 841

Pop	nSSR			mtDNA			Area (km <sup>2</sup> )
	AR	$A_p$	$H$	$h$	$\pi$	$h_p$	
AKE	40.9	7	2.876	0.779	0.00290	4	3.282
MAN	40.5	2	3.242	0.270	0.00047	4	15.599
PAT	26.3	4	3.445	0.000	0.00000	0	5.725
WHI	42.0	5	3.240	0.569	0.00129	5	29.618
BEN	50.6	4	3.149	0.380	0.00134	3	0.140
BES	53.8	1	3.442	0.411	0.00075	4	0.707
CHA	49.6	8	3.405	0.641	0.00246	8	23.206
EIN	50.3	4	3.493	0.260	0.00060	2	1.964
FRE	38.9	3	2.873	0.320	0.00122	2	0.890
FRS	54.9	9	3.441	NA	NA	NA	0.590
LYD	51.9	5	3.324	0.537	0.00223	5	2.061
GUL	50.1	4	2.493	NA	NA	NA	0.576
MUS	40.3	0	3.243	0.356	0.00123	7	18.284
MEA	NA	NA	NA	0.253	NA	4	0.900

842 Table 2: Pairwise genetic distances between *Artemia franciscana* populations in Saskatchewan. The lower diagonal shows Pairwise  $\Phi_{ST}$   
843 (Tamura & Nei) based on the mtDNA marker (CO1). The upper diagonal shows  $D_{EST}$  computed for five nSSR markers. Numbers in light  
844 grey have a non-significant associated p-value ( $> 0.01$ ).  
845

	<b>AKE</b>	<b>BEN</b>	<b>BES</b>	<b>FRE</b>	<b>FRS</b>	<b>WHI</b>	<b>CHA</b>	<b>LYD</b>	<b>EIN</b>	<b>MEA</b>	<b>MAN</b>	<b>MUS</b>	<b>PAT</b>	<b>SHO</b>	<b>GUL</b>
<b>AKE</b>		0.341	0.321	0.326	0.374	0.316	0.316	0.332	0.296	-	0.323	0.418	0.331	0.322	0.313
<b>BEN</b>	0.476		-0.007	0.318	0.150	0.334	0.077	0.093	0.069	-	0.253	0.048	0.204	0.038	0.159
<b>BES</b>	0.574	0.016		0.294	0.155	0.296	0.075	0.086	0.058	-	0.235	0.070	0.181	0.044	0.139
<b>FRE</b>	0.493	0.000	0.038		0.188	0.140	0.159	0.233	0.213	-	0.108	0.391	0.225	0.260	0.166
<b>FRS</b>	-	-	-	-		0.305	0.015	0.072	0.086	-	0.255	0.139	0.326	0.082	0.105
<b>WHI</b>	0.521	0.013	-0.006	0.025	-		0.219	0.182	0.159	-	0.100	0.374	0.215	0.293	0.157
<b>CHA</b>	0.386	0.061	0.105	0.009	-	0.090		0.029	0.024	-	0.178	0.089	0.220	0.022	0.038
<b>LYD</b>	0.490	0.636	0.700	0.643	-	0.658	0.548		0.004	-	0.213	0.097	0.258	0.058	0.075
<b>EIN</b>	0.570	0.736	0.824	0.750	-	0.777	0.593	0.085		-	0.168	0.082	0.192	0.034	0.046
<b>MEA</b>	0.622	0.764	0.839	0.777	-	0.801	0.637	0.123	0.001		-	-	-	-	-
<b>MAN</b>	0.623	0.769	0.848	0.783	-	0.808	0.637	0.123	0.001	0.000		0.310	0.149	0.251	0.121
<b>MUS</b>	0.568	0.698	0.761	0.706	-	0.728	0.602	0.048	0.015	0.029	0.028		0.295	0.076	0.152
<b>PAT</b>	0.623	0.794	0.891	0.813	-	0.841	0.632	0.115	-0.007	-0.016	-0.015	0.016		0.229	0.218
<b>SHO</b>	-	-	-	-	-	-	-	-	-	-	-	-	-		0.081

Table 3 a, b. Population genetic structure of *Artemia franciscana* in Saskatchewan identified by AMOVA for (a) CO1 haplotypes (mtDNA) with p-values obtained from 10,100 randomisations as implemented in Arlequin v3.5.2.2, and (b) five nSSR loci, with associated p-values obtained by Monte Carlo permutation test with 999 repeats. For a), population genetic structure was tested for the following groups of populations with low genetic differentiation according to Table 2 (lower diagonal). Group1: AKE; group2: BEN, BES, FRE, WHI, CHA; group3: EIN, LYD, MUS, MAN, PAT, MEA. Groups of populations for b) were chosen according to connected and unconnected populations resulting from network construction (Fig. 3a): AKE (group1), WHI (group2), MUS (group3), MAN (group4), PAT (group5), FRE (group6), group7: BEN, BES, and group8: EIN, LYD, CHA, GUL, FRS, SHO.

Source of variation	d.f.	Sum of squares	Variance component	% variation	p-value
<b>a) CO1 haplotypes</b>					
Between groups	2	135.42	0.839	68.06	<10 <sup>-5</sup>
Between populations within groups	9	7.18	0.017	1.37	<10 <sup>-5</sup>
Within populations	281	105.96	0.377	30.57	<10 <sup>-5</sup>
Total	292	248.56	1.233		
<b>b) nSSRs</b>					
Between groups	7	176.90	0.321	14.09	0.001
Between populations within groups	6	24.70	0.055	2.41	0.001
Within populations	578	1100.03	1.903	83.50	0.001
Total	591	1301.62	2.279		

Table 4. Summary of results of dbRDA for nSSR markers obtained by forward model selection (100 repeats) to test the effect of individual environmental variables (lake area, SO<sub>4</sub>, Cl/SO<sub>4</sub>, Alkalinity/SO<sub>4</sub>, Alkalinity/Ca+Mg) on genetic distance (D<sub>EST</sub>, for details see Methods). Lake area, SO<sub>4</sub>, Cl/SO<sub>4</sub>, Alkalinity/SO<sub>4</sub> were not selected by forward model selection and therefore were not included in the table. "*signif*(n)" = the number of times that results were significant (of 100 repeats).

statistics	Alk/Ca+Mg
R2.adj	0.30
AIC	-16.3
F	4.49
p.mean	0.04
p.min	0.024
p.max	0.05
p.SD	0.007
<i>signif</i> (n)	87