



HAL
open science

Metabolomic approach using LC-MS/MS analysis and molecular networking to follow up bioactive constituents of *Callophyllum inophyllum* nuts during drying process

Emilie Stierlin, Raimana Ho, Stephane Greff, Gaëtan Herbette, Phila Raharivelomanana

► To cite this version:

Emilie Stierlin, Raimana Ho, Stephane Greff, Gaëtan Herbette, Phila Raharivelomanana. Metabolomic approach using LC-MS/MS analysis and molecular networking to follow up bioactive constituents of *Callophyllum inophyllum* nuts during drying process. *Vanguards of Natural Product Research*, Jul 2021, distancier, France. 2021. hal-03293411

HAL Id: hal-03293411

<https://amu.hal.science/hal-03293411v1>

Submitted on 21 Jul 2021

HAL is a multi-disciplinary open access archive for the deposit and dissemination of scientific research documents, whether they are published or not. The documents may come from teaching and research institutions in France or abroad, or from public or private research centers.

L'archive ouverte pluridisciplinaire **HAL**, est destinée au dépôt et à la diffusion de documents scientifiques de niveau recherche, publiés ou non, émanant des établissements d'enseignement et de recherche français ou étrangers, des laboratoires publics ou privés.

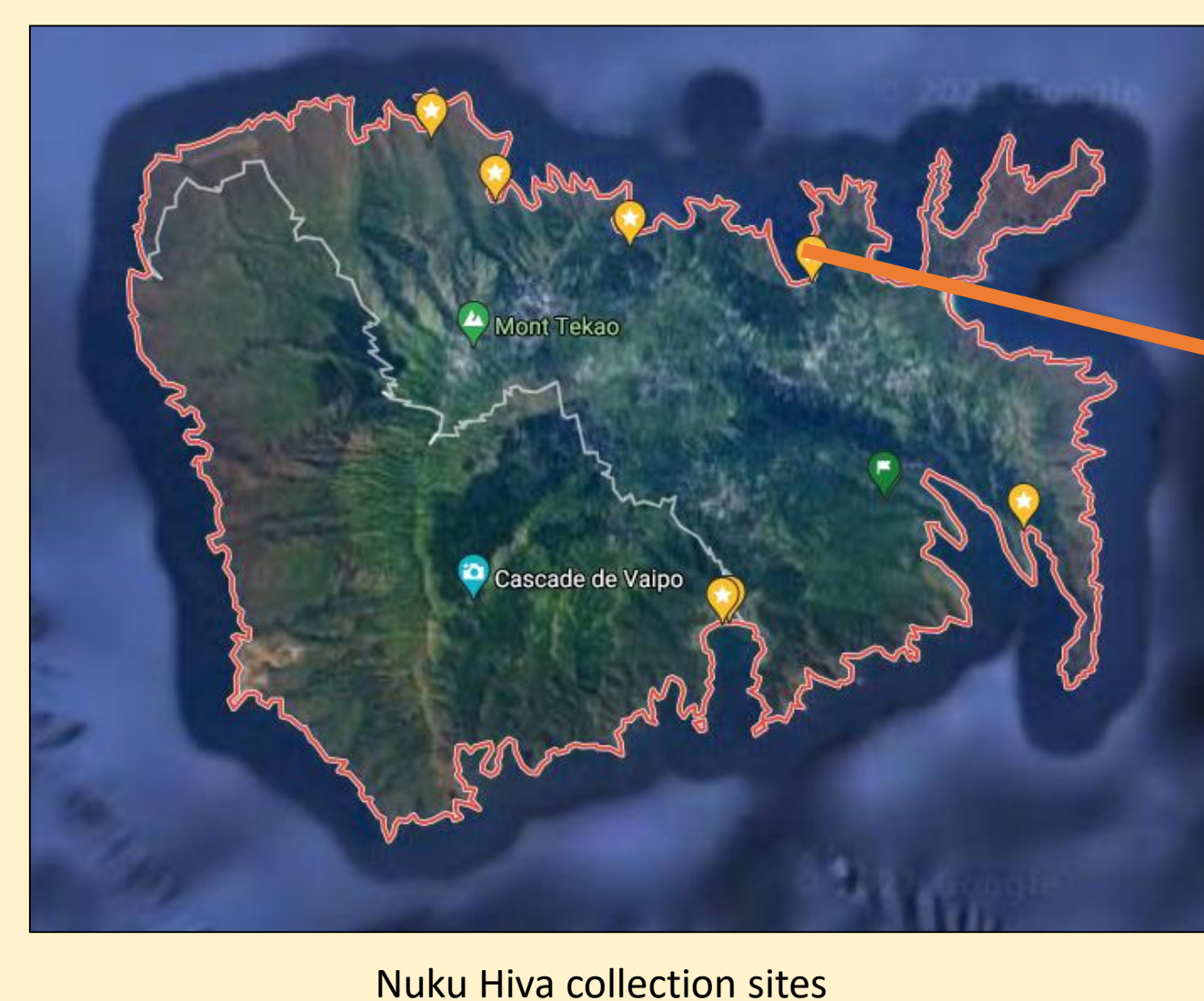
Metabolomic approach using LC-MS/MS analysis and molecular networking to follow up bioactive constituents of *Calophyllum inophyllum* nuts during drying process

Émilie STIERLIN¹, Raimana HO¹, Stéphane GREFF², Gaëtan HERBETTE³, and Phila RAHARIVELOMANANA¹.

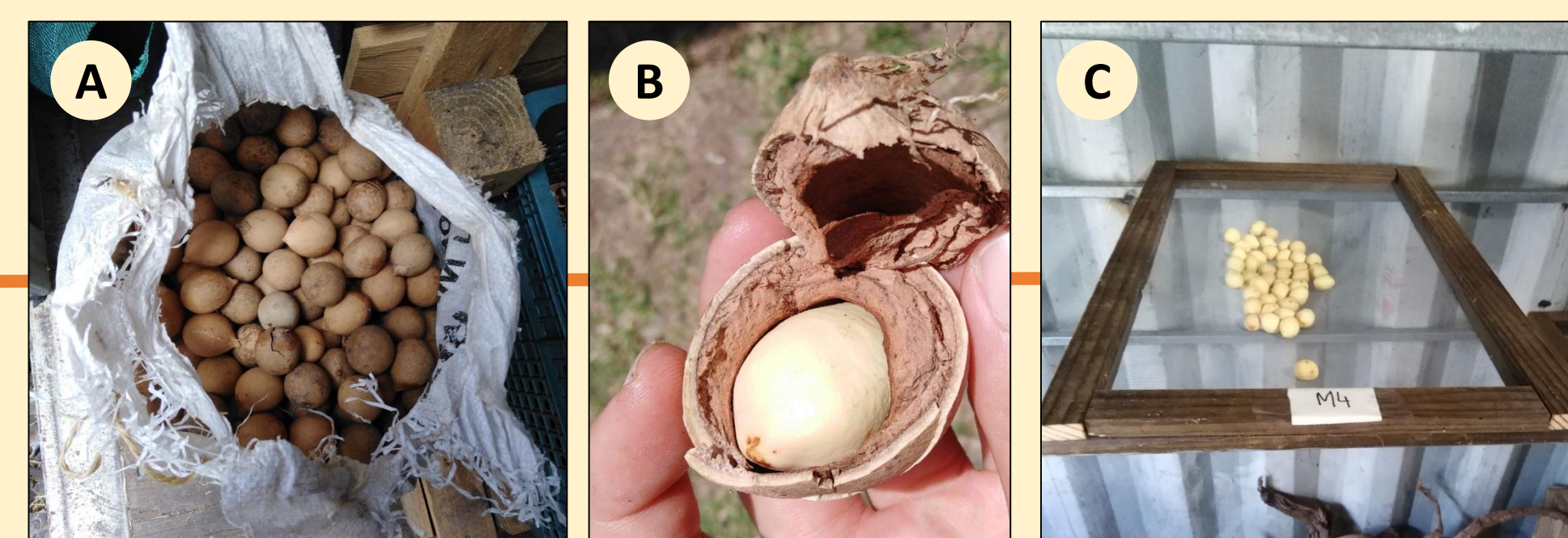
¹UNIV. POLYNESIE FRANCAISE, IFREMER, ILM, IRD, EIO UMR 241, TAHITI, POLYNESIE FRANCAISE, ²IMBE CNRS IRD, AMU-AU, rue de la Batterie des Lions, 13007 Marseille, France, ³AMU, CNRS, Centrale Marseille, FSCM, Spectropole, 13013 Marseille, France.

Contact: emilie.stierlin@upf.pf

Strategy



DRYING PROCESS



(A) Harvesting between July and September 2020 in the Marquesas Islands
(B) Opening the fruits
(C) Drying of the nuts from 0 to 10 weeks

PRESS EXTRACTION



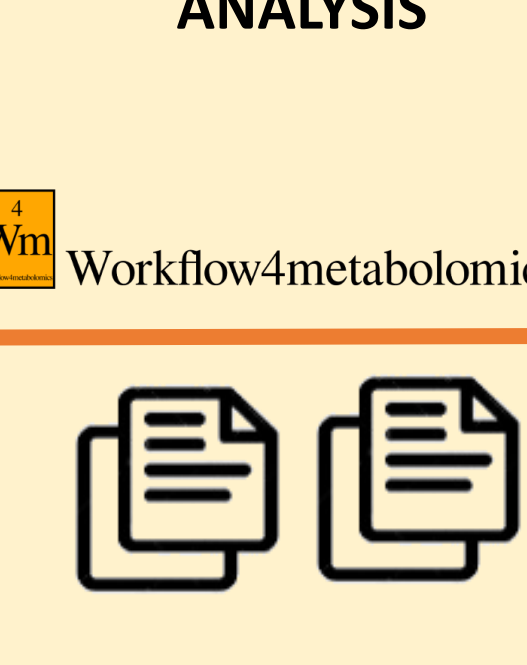
Laboratory scale extraction:
Grinding of 15 ± 2 g of dry nuts,
maceration with EtOAc (ethyl
acetate), sonication and drying

LC-DAD and UPLC-MS/MS analysis



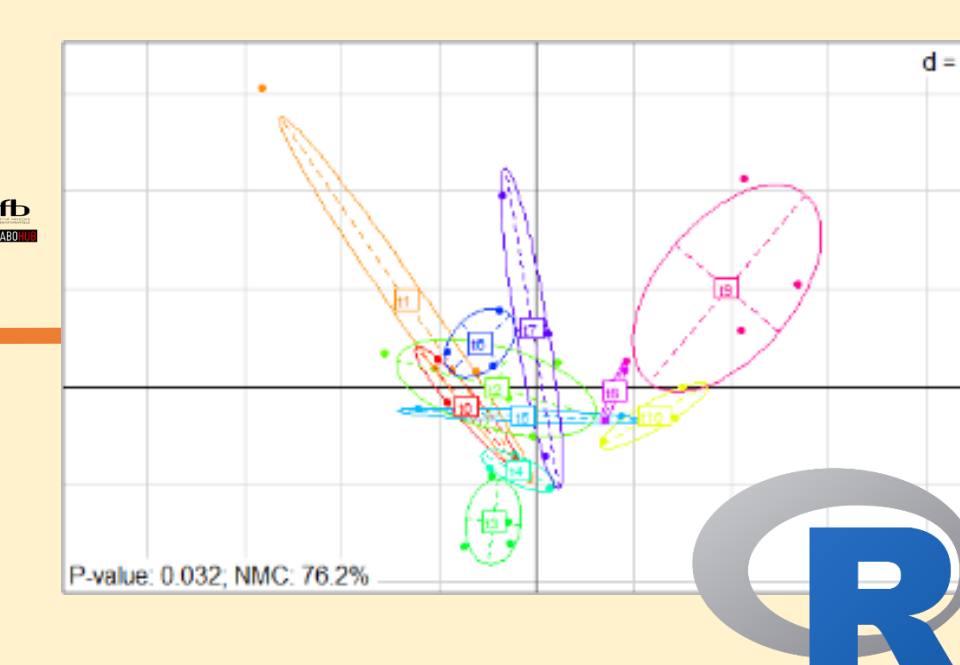
≈ 135 resinoid extracts
analyzed in French Polynesia (LC-DAD, Luna C18
(250 x 4.6 mm, 3 μm)) and Marseille (UPLC-QqToF-
MS/MS, Luna C18 (150 x 2.1 mm, 1.6 μm))

PRE-PROCESSING ANALYSIS



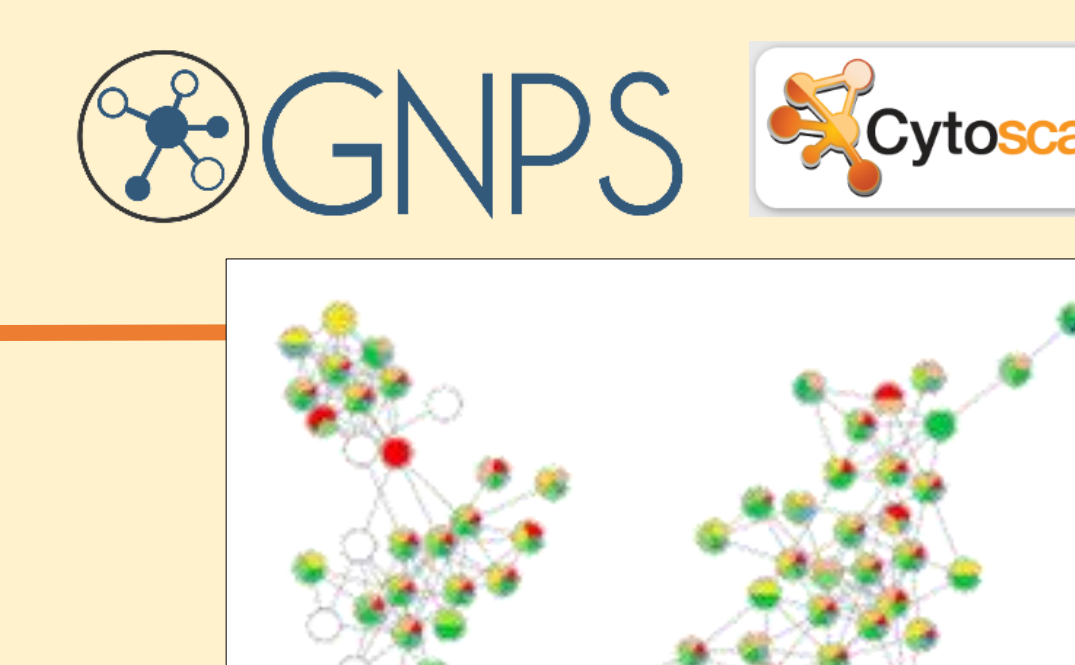
Alignment on W4M
110 Samples
1176 ions

DISCRIMINANT ANALYSIS

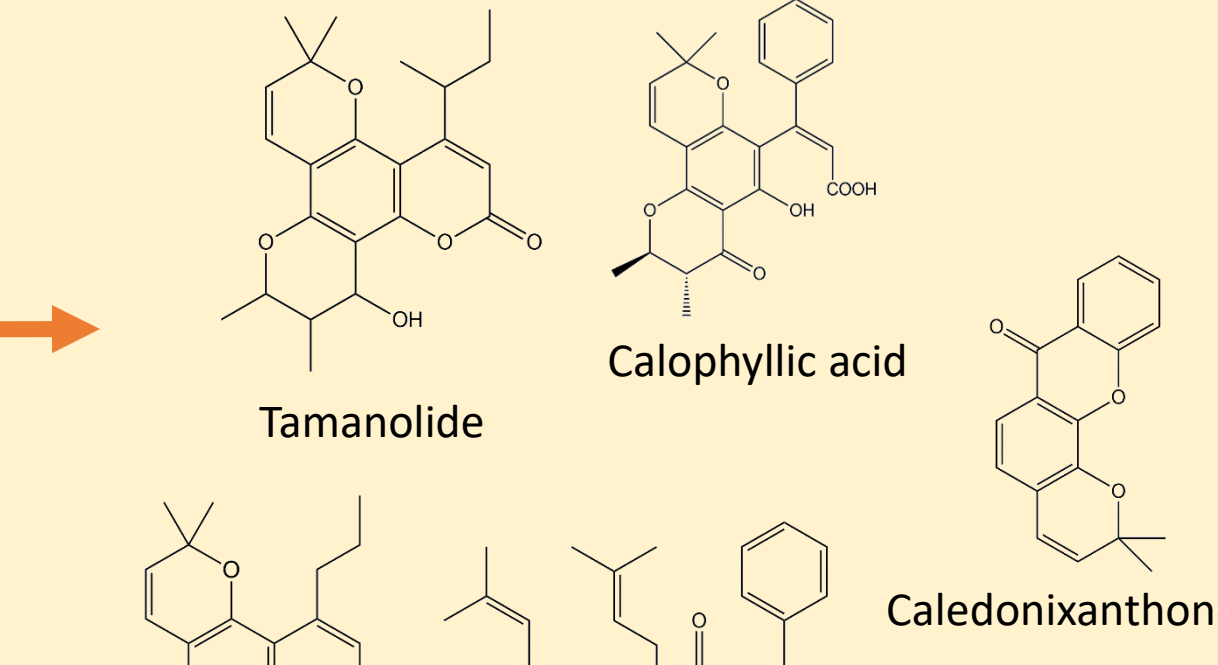


R packages: mixOmics (*plsda* function); ade4
(graphical representation); RVAideMemoire
(discriminant compounds)

MOLECULAR NETWORKS



ANNOTATION AND IDENTIFICATION



Tamanolide
Calophyllic acid
Caledonixanthone B
Calanolide D
Inocalophyllin A

Context

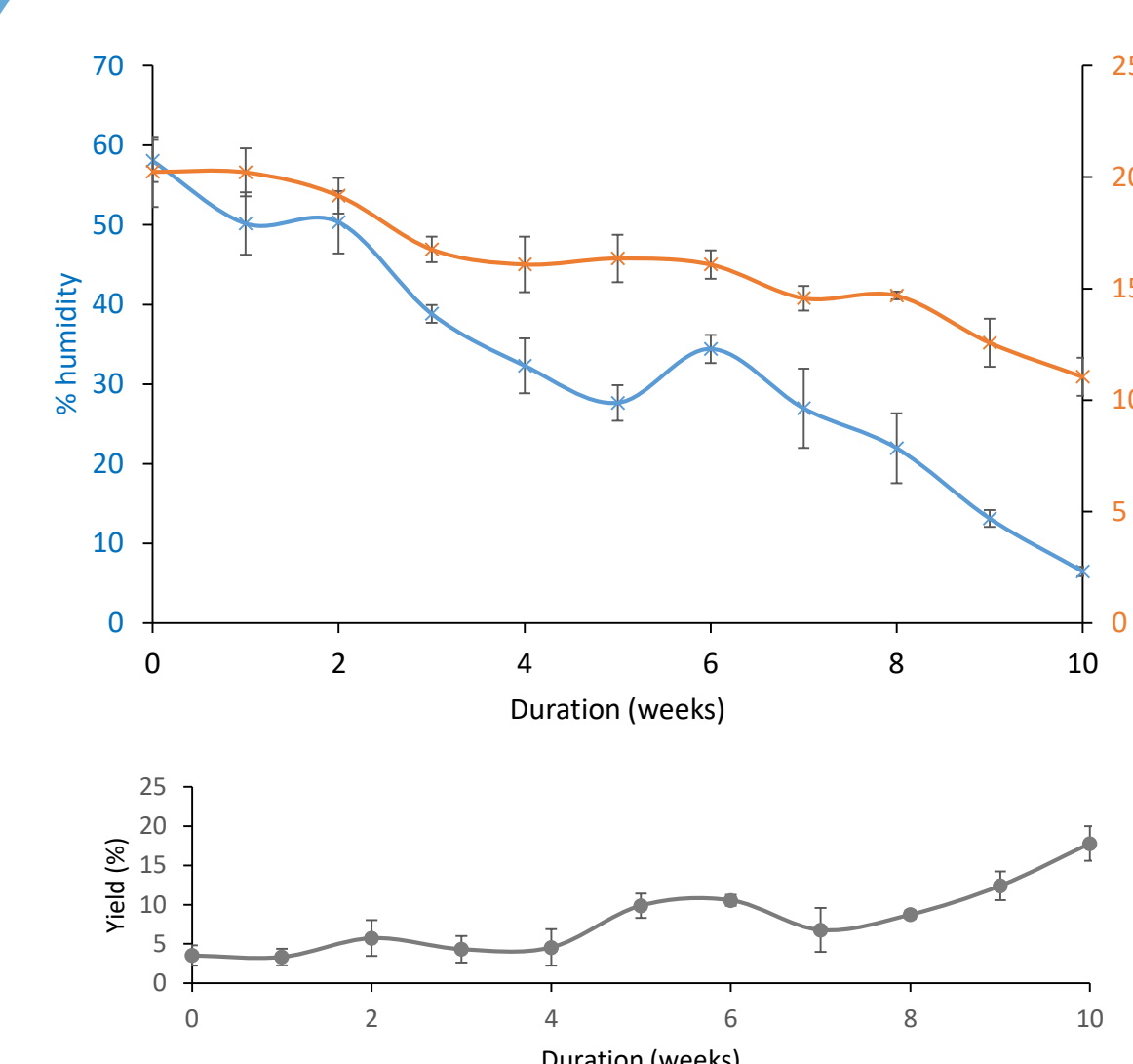
Tamanu oil, obtained from the nuts of *Calophyllum inophyllum* L. (Calophyllaceae), was traditionally used to cure various skin problems and ailments in French Polynesia [1]. Nuts and containing oil are also used for skin care [2]. They were reported to treat different kinds of skin affections and used as natural cosmetic ingredient [3]. Since the drying of nuts is an important stage for oil preparation, the objective of our study was to **develop an analytical method to evaluate oil quality** (chemical composition and oil yields) during nuts drying process following different drying parameters (abiotic factors or duration). In this project, we propose to use a metabolomic approach combining LC-MS/MS analysis and molecular networking to identify markers inducing **chemical composition variability during drying process of *tamanu* nuts** and previously unidentified constituents.

Objectives:

- Evaluate quality of oil by oil yields and chemical composition during drying process**
- Assess the drying process efficiency by a metabolomics approach**

Results

Evolution of metabolites in *tamanu* nuts during the drying process

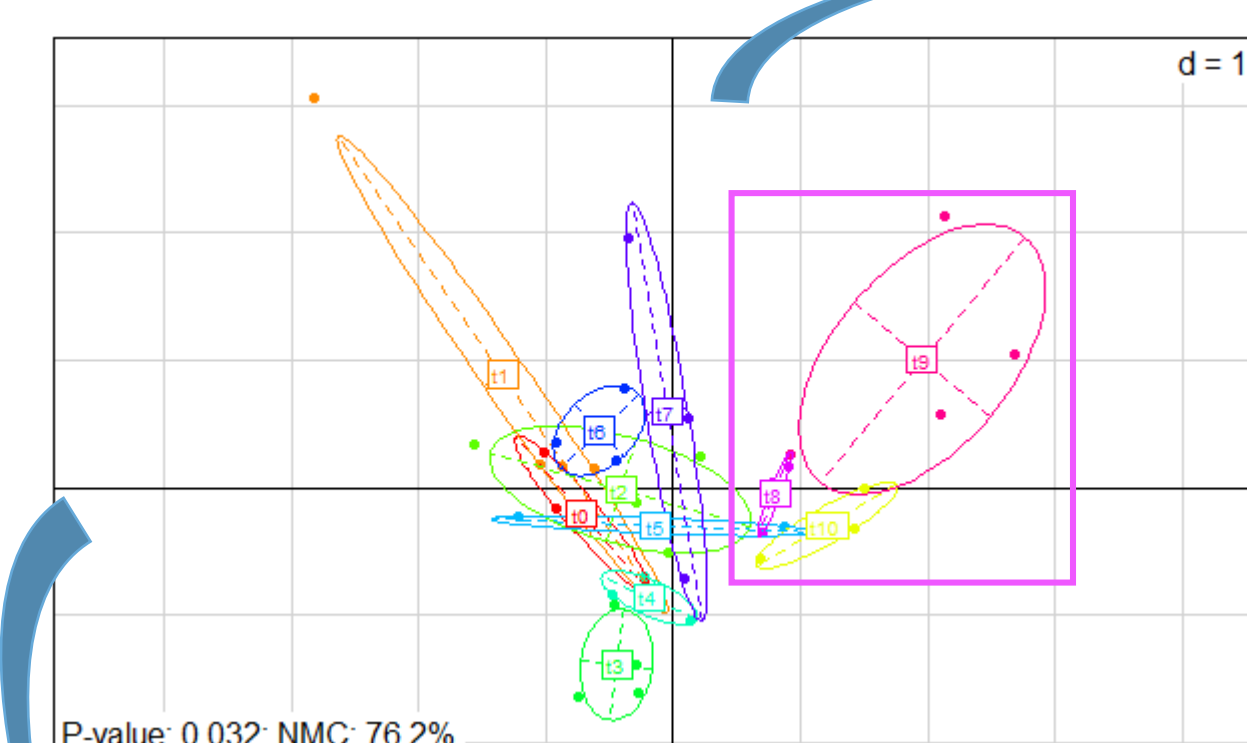


Evolution of the percentages of humidity, weight of the nuts and the oil yields of *tamanu* during the drying process from 0 to 10 weeks.

Main observations:

- Loss of nut mass of about 10% from t0 to t10 (from 20 to 11%)
- Decrease in moisture content from t0 to t10 (from 58% to about 6%)
- Increase of oil extraction yield (from 3.5% at t0 to 17.8% at t10)
- Different chemical compositions from t8 to t10 compared to the other durations (P-value < 0.05)
- ↑ node size = ↑ VIP score
- Inocalophyllin B and inophyllum E, chemical markers of nuts at the beginning of drying**
- Caledonixanthone B, marker at the end of drying**

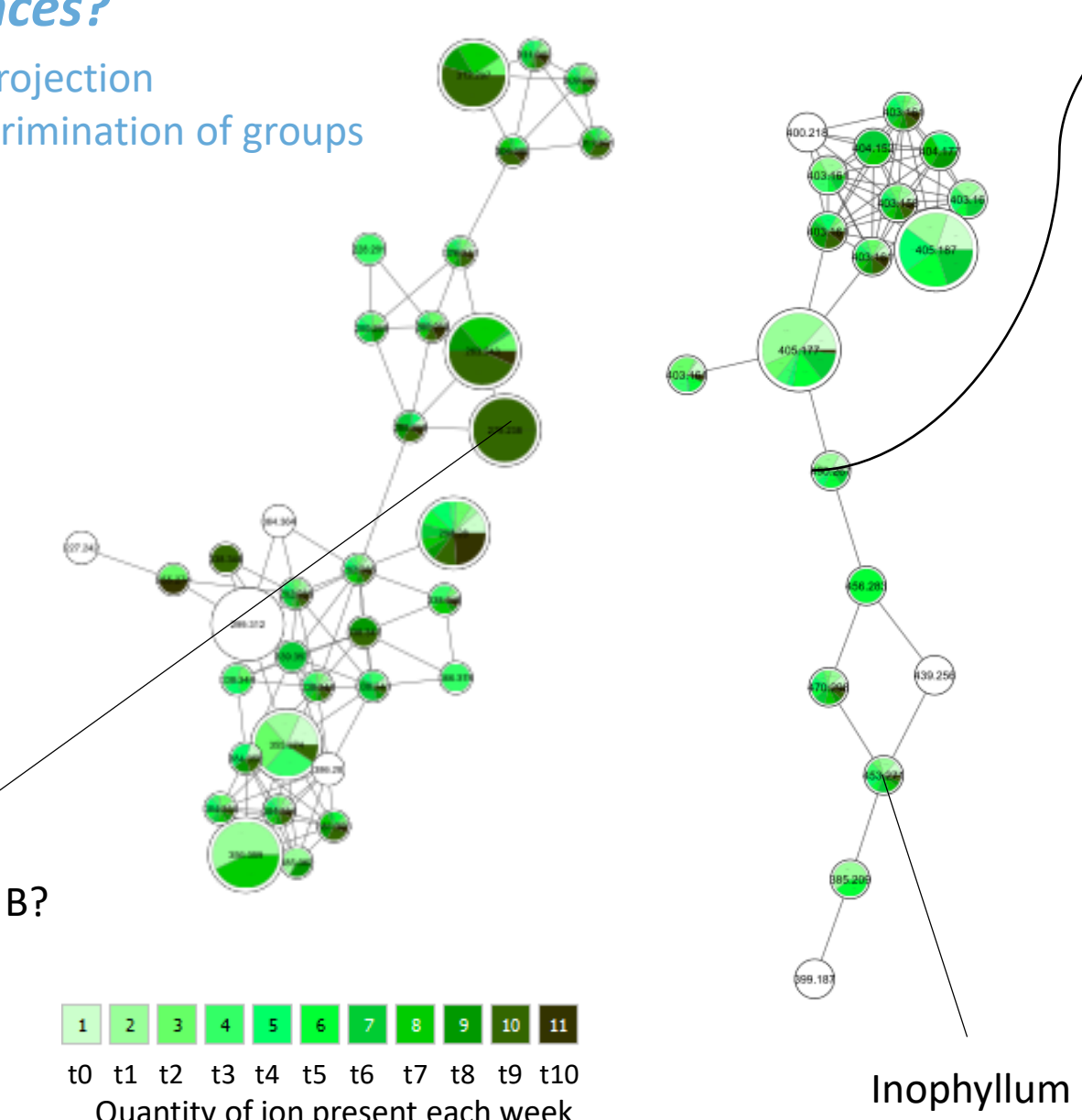
Number of misclassifications (NMC): percentage of samples which are wrongly classified by the model
P-value < 0.05: significant difference between the two groups



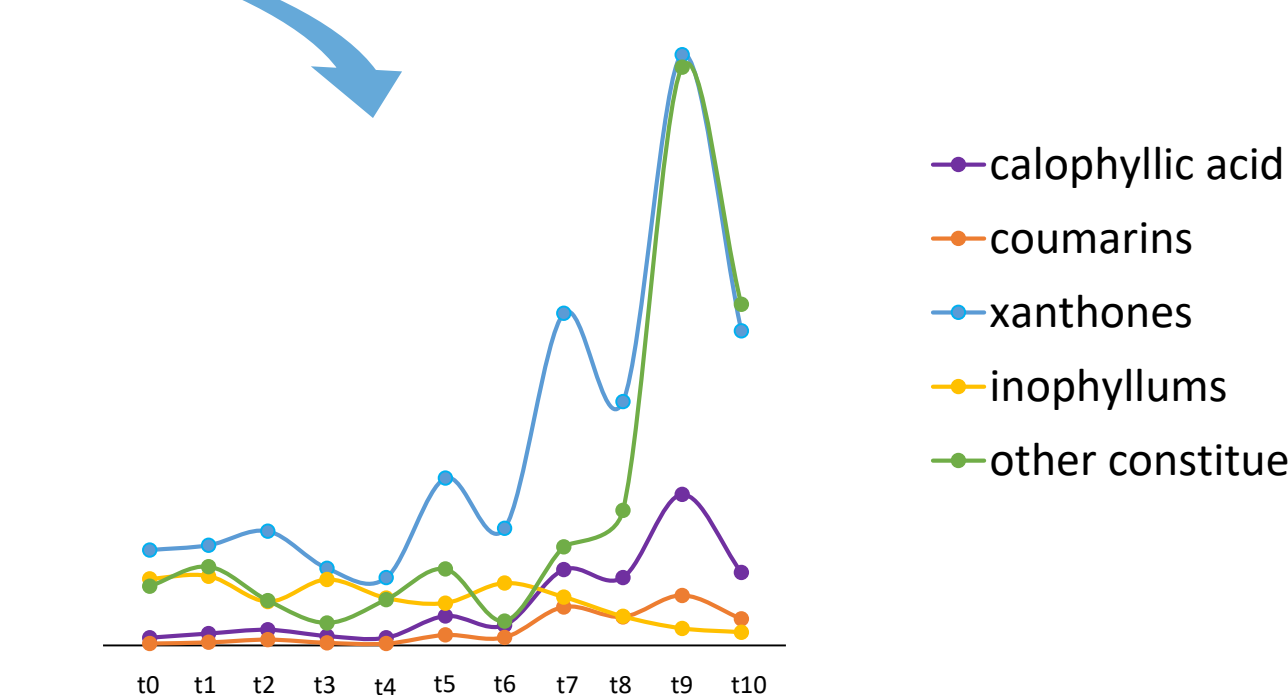
PLS-DA score plot (discriminant analysis) on the chemical composition of *tamanu* oils according to the drying process from 0 to 10 weeks.

Which compounds may influence these differences?

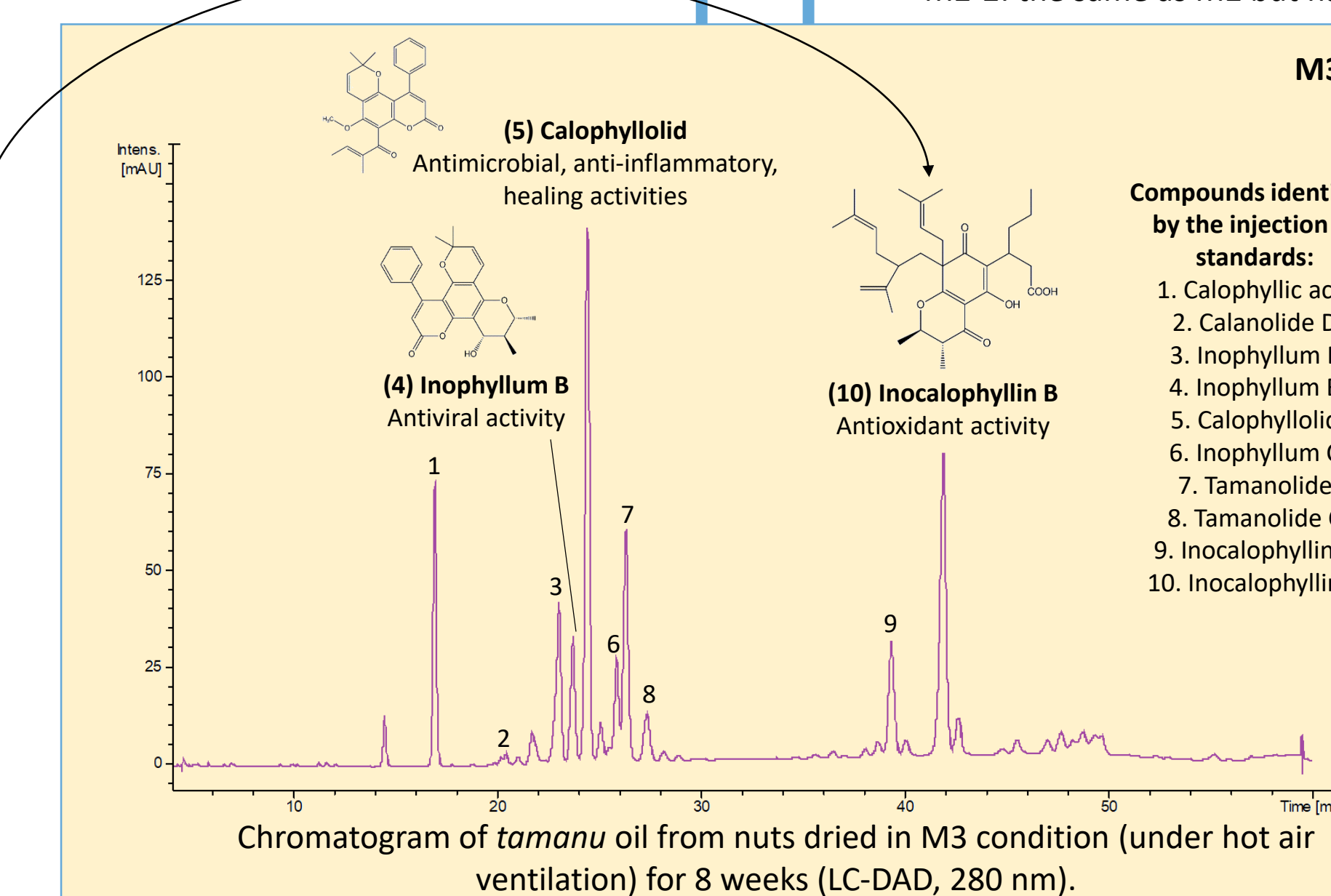
VIP = Variable importance in the projection
= m/z which impact in the discrimination of groups



Caledonixanthone B?
Inophyllum E



Evolution of the most represented chemical families in VIPs during drying process.



- (5) Calophylloid**
Antimicrobial, anti-inflammatory, healing activities
- (4) Inophyllum B**
Antiviral activity
- (10) Inocalophyllin B**
Antioxidant activity
- Compounds identified by the injection of standards:**
- Calophyllic acid
 - Calanolide D
 - Inophyllum E
 - Inophyllum B
 - Calophylloid
 - Inophyllum C
 - Tamanolide
 - Tamanolide C
 - Inocalophyllin A
 - Inocalophyllin B

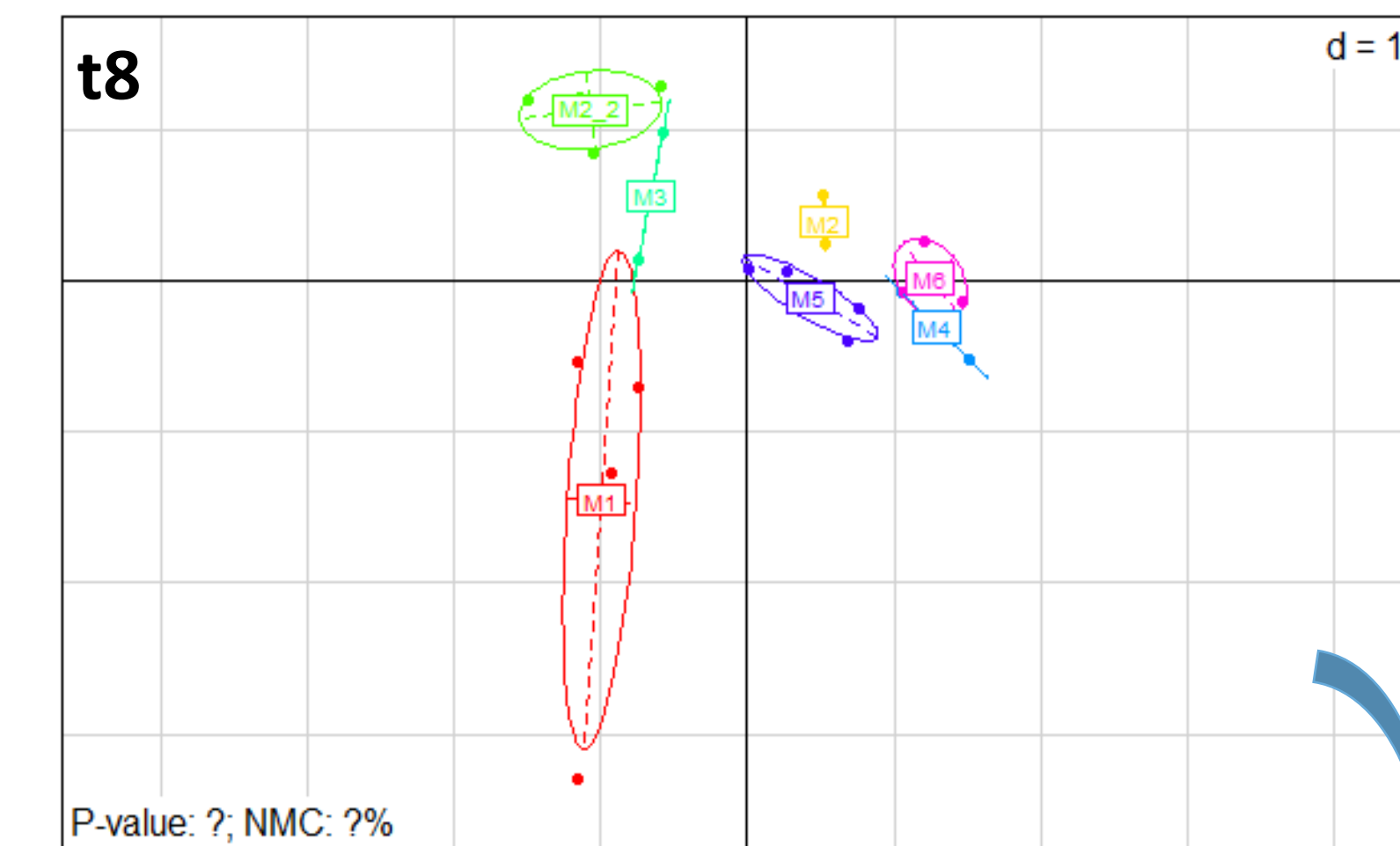
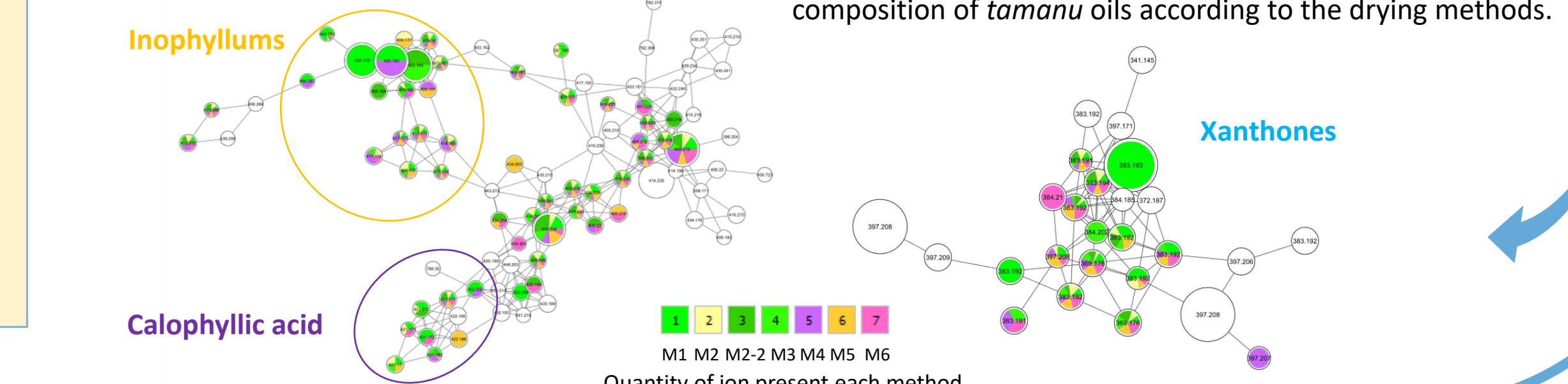
Chemical composition and drying methods



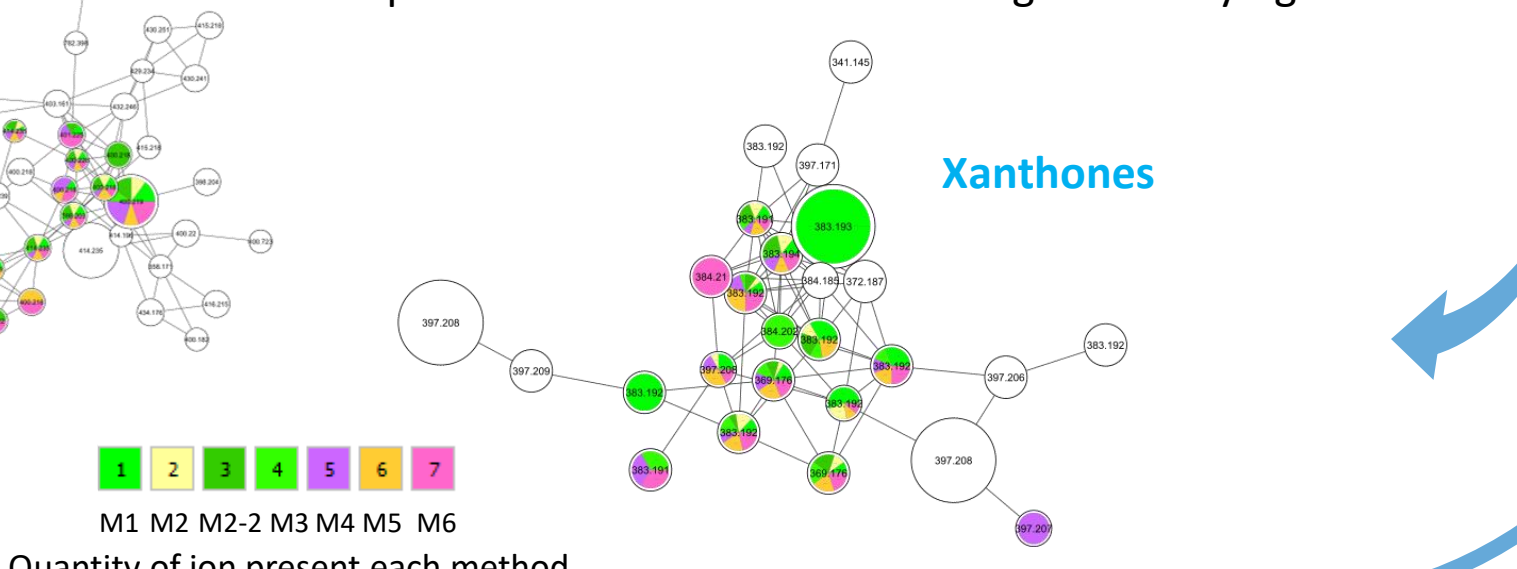
6 different drying methods tested in Taiohae, Nuku Hiva (September 2020):
M1: outdoor; M2: outdoor covered; M3: On ventilation (hot air); M4: in ventilated container; M5: in closed container (not ventilated); M6: the same as M3 but with cut nuts
M2-2: the same as M2 but harvest on January 2020 (dried seeds)

Main observations:

- No significant difference between methods?
- Similitude of chemical composition (3 clusters):
- M1+M2-2+M3 (1)
- M2+M5 (2)
- M4+M6 (3)
- ↑ diversity of compounds in M1, M2-2 and M3
- Better yields for M3 and M5



PLS-DA score plot (discriminant analysis) on the chemical composition of *tamanu* oils according to the drying methods.



Quantity of ion present each method

Conclusion and perspectives

Using a metabolomic approach combining LC-MS/MS analysis and molecular networking, the obtained data revealed differences in the metabolites chemical classes occurring in resulting oils (neoflavonoids, coumarins, xanthenes and triterpenes) and provided the identification of precedently unreported constituents. **Inophyllums seemed to be more abundant in the beginning of drying process compared to calophyllic acid** after nine weeks. For the first time, our study provides new findings regarding the occurrence and evolution of the metabolites in *tamanu* nuts during the drying process. The developed method provided a powerful analytical tool aiming a better identification of bioactive components formed in *tamanu* nuts during drying process and will be helpful to control high quality oil for a natural active cosmetic ingredient. An efficient metabolomic approach was thus implemented to identify markers inducing variability in chemical composition during drying process of *tamanu* nuts and previously unidentified constituents. Thus, this set-up analytical method successfully applied in *C. inophyllum* could be used to the study of metabolites of a wide range of plant metabolites content.

Acknowledgements

The authors thank Hugues Chaze for providing *tamanu* nuts samples. We also thank all the partners involved in the Tam-Tam project funded by the UPF (University of French Polynesia) and "Compagnie des plantes marquisiennes" company.

References

- Pétard P, Ed. Revue et augmentée HaerePo No Tahiti, 1986, 224-225.
- Léguillier *et al.*, PlosOne, 2015, 10(9):e0138602, doi:10.1371/journal.pone.0138602.
- Raharivelomanana *et al.*, OCL, 2018, 25(5), doi:10.1051/oc/2018048.

