



HAL
open science

Carbapenemase-producing Gram-negative bacteria in aquatic environments: a review

Zineb Cherak, Lotfi Loucif, Abdelhamid Moussi, Jean-Marc Rolain

► To cite this version:

Zineb Cherak, Lotfi Loucif, Abdelhamid Moussi, Jean-Marc Rolain. Carbapenemase-producing Gram-negative bacteria in aquatic environments: a review. *Journal of Global Antimicrobial Resistance*, 2021, 25, pp.287-309. 10.1016/j.jgar.2021.03.024 . hal-03333771

HAL Id: hal-03333771

<https://amu.hal.science/hal-03333771>

Submitted on 10 Sep 2021

HAL is a multi-disciplinary open access archive for the deposit and dissemination of scientific research documents, whether they are published or not. The documents may come from teaching and research institutions in France or abroad, or from public or private research centers.

L'archive ouverte pluridisciplinaire **HAL**, est destinée au dépôt et à la diffusion de documents scientifiques de niveau recherche, publiés ou non, émanant des établissements d'enseignement et de recherche français ou étrangers, des laboratoires publics ou privés.



Distributed under a Creative Commons Attribution 4.0 International License



Carbapenemase-producing Gram-negative bacteria in aquatic environments: a review

Zineb Cherak^a, Lotfi Loucif^{b,*}, Abdelhamid Moussi^a, Jean-Marc Rolain^{c,d}

^a Laboratoire de Génétique, Biotechnologie et Valorisation des Bio-ressources (GBVB), Faculté des Sciences Exactes et des Sciences de la Nature et de la Vie, Université Mohamed Khider, Biskra, Algeria

^b Laboratoire de Biotechnologie des Molécules Bioactives et de la Physiopathologie Cellulaire (LBMBPC), Département de Microbiologie et de Biochimie, Faculté des Sciences de la Nature et de la Vie, Université de Batna 2, Batna, Algeria

^c Aix-Marseille Université, IRD, MEPHI, Faculté de Médecine et de Pharmacie, Marseille, France

^d IHU Méditerranée Infection, Marseille, France; and Assistance Publique des Hôpitaux de Marseille, Marseille, France



ARTICLE INFO

Article history:

Received 10 November 2020

Revised 4 March 2021

Accepted 20 March 2021

Available online 23 April 2021

Editor: Dr Jon Hobman

Keywords:

Carbapenemase

Gram-negative bacilli

Aquatic environment

Epidemiology

ABSTRACT

Antibiotic resistance is one of the greatest public-health challenges worldwide, especially with regard to Gram-negative bacteria (GNB). Carbapenems are the β -lactam antibiotics of choice with the broadest spectrum of activity and, in many cases, are the last-resort treatment for several bacterial infections. Carbapenemase-encoding genes, mainly carried by mobile genetic elements, are the main mechanism of resistance against carbapenems in GNB. These enzymes exhibit a versatile hydrolytic capacity and confer resistance to most β -lactam antibiotics. After being considered a clinical issue, increasing attention is being given to the dissemination of such resistance mechanisms in the environment and especially through water. Aquatic environments are among the most significant microbial habitats on our planet, known as a favourable medium for antibiotic gene transfer, and they play a crucial role in the huge spread of drug resistance in the environment and the community. In this review, we present current knowledge regarding the spread of carbapenemase-producing isolates in different aquatic environments, which may help the implementation of control and prevention strategies against the spread of such dangerous resistant agents in the environment.

© 2021 The Author(s). Published by Elsevier Ltd on behalf of International Society for Antimicrobial Chemotherapy.

This is an open access article under the CC BY-NC-ND license (<http://creativecommons.org/licenses/by-nc-nd/4.0/>)

1. Introduction

Antibiotic resistance is one of the greatest public-health challenges worldwide, especially with regard to Gram-negative bacteria (GNB). In 2016, the World Health Organization (WHO) was called on by its member states to name a priority list of drug-resistant bacteria that require the development of new effective medicines. Interestingly, the critical priority level was reserved for carbapenem-resistant *Acinetobacter baumannii*, *Pseudomonas aeruginosa* and Enterobacteriaceae as well as third-generation cephalosporin-resistant Enterobacteriaceae [1]. Carbapenems are the β -lactam antibiotics with the broadest spectrum of activity. Imipenem, first marketed in 1985, was the first carbapenem available for the treatment of bacterial infections [2]. Thereafter, several carbapenems were developed in the subsequent two decades.

Nowadays, the most clinically used carbapenems are ertapenem, meropenem, doripenem and imipenem [3]. However, in less than a decade after their use, carbapenem-resistant GNB have emerged [4]. Owing to the fact that carbapenems are the antibiotics of choice and, in many cases, the last-resort treatment for several bacterial infections, the emergence and spread of carbapenem-resistant GNB are currently a major global public-health crisis [5]. Carbapenem resistance in GNB may be conferred by various mechanisms, including quantitative and/or qualitative changes in membrane permeability owing to chromosomal mutations in efflux pump-encoding genes or alterations in the expression and/or function of porins, the association of impermeability with extended-spectrum β -lactamases (ESBLs) or overexpression of AmpC β -lactamases or by the production of carbapenem-hydrolysing enzymes ('carbapenemases'), which represent the most worrying mechanism of carbapenem resistance. These enzymes exhibit a versatile hydrolytic capacity and confer resistance to most β -lactam antibiotics [2,3,6–8].

* Corresponding author. Tel.: +213 5 40 92 54 00.

E-mail address: lotfiloucif@hotmail.fr (L. Loucif).

Classically, antibiotic resistance has been known to be restricted to clinical settings [9]. However, several studies have demonstrated the dissemination of resistant organisms in the environment, particularly in water. Indeed, water is one of the most significant microbial habitats on our planet and it has been proven that antibiotic resistance genes are common in different water ecosystems, which may play a crucial role in the propagation of antibiotic resistance between the natural environment and humans and other animals [10–12].

In this review, we present current knowledge regarding the spread of carbapenemase-producing isolates in different aquatic environments, which may help the implementation of control and prevention strategies against the spread of such dangerous resistant agents in the environment.

For this purpose, we carried out a comprehensive literature search on PubMed and Google Scholar websites. We included papers published in English language up to April 2020 using the following search terms and/or phrases: 'Gram negative bacilli', 'Enterobacteriaceae', '*Pseudomonas aeruginosa*', '*Acinetobacter baumannii*', and 'carbapenemases', 'metallo- β -lactamases', 'KPC', 'GES', 'IMI', 'VIM', 'NDM', 'IMP', 'OXA-48', and 'water environments', 'aquatic environments', 'water', 'wastewater', 'sewage', 'hospital wastewater', 'hospital sewage', 'wastewater treatment plants', 'surface water', 'ground water'. Search terms were separated by the 'AND' Boolean operator.

2. Carbapenemases in Gram-negative bacteria

Carbapenemases constitute a large variety of enzymes that are categorised either functionally (Bush classification) or genetically (Ambler molecular classification) [5]. However, the most common classification is the molecular one based on the Ambler classification scheme [13] in which carbapenemases are assigned to three of the four Ambler classes (A, B and D). According to the functional classification, they fall under the functional groups 2df, 2f, 3a and 3b [14]. Despite the great number of carbapenemase enzymes identified in GNB, the five major and most prevalent carbapenemases are KPC (*Klebsiella pneumoniae* carbapenemase), NDM (New Delhi metallo- β -lactamase), IMP (imipenem-resistant *Pseudomonas*), VIM (Verona integron-encoded metallo- β -lactamase) and OXA-48 (oxacillinase) [15,16]. Carbapenemases are either chromosomally encoded, such as SME (*Serratia marcescens* enzyme) and NMC-A (non-metallo-carbapenemase-A), which are usually reported on the chromosome of some Enterobacterales species including *S. marcescens* and *Enterobacter cloacae*, or more frequently are encoded by mobile genetic elements including plasmids, integrons and transposons [5,17].

3. Epidemiology of carbapenemase-producing Gram-negative bacteria in aquatic environments

Carbapenemases of the three Ambler classes have been detected in aquatic environments whether using culture or culture-independent methods. The worldwide epidemiology of carbapenemase-producers isolated from various aquatic environments is summarised in Fig. 1 and presented below by Ambler class.

3.1. Class A carbapenemases

The first reported class A carbapenem-hydrolysing β -lactamase (SME) was from the UK in a *S. marcescens* isolate in 1990 [3]. Enzymes in this β -lactamase class are serine proteins (using a serine residue for their activity) and are inhibited by clavulanic acid, tazobactam and boronic acid compounds [6,18]. They have a broad

spectrum of activity including penicillins, cephalosporins, aztreonam and carbapenems [18]. The most prevalent and clinically significant enzyme among the class A carbapenemases is KPC, which is commonly identified in Enterobacterales species but also occasionally in *P. aeruginosa* and *A. baumannii* [13,19].

3.1.1. Enterobacterales

Class A carbapenemase-producing Enterobacterales have been widely isolated from aquatic environments worldwide (Table 1; Fig. 2). In 2004, Henriques et al. characterised a new class A carbapenemase-encoding gene designated as SFC-1 (for *Serratia fonticola* carbapenemase) on the chromosome of a *S. fonticola* isolate obtained from untreated drinking water in Portugal [20]. Furthermore, IMI-2-producing *Enterobacter asburiae* isolates were recovered from rivers and lake water in the USA and France [21–23]. In addition, Piedra-Carrasco et al. have reported the isolation of IMI-2-producing *E. cloacae* from river water in Spain [24]. Another Ambler class A enzyme that is commonly reported among members of the Enterobacterales is KPC, whose variants are the most detected class A carbapenemases in Enterobacterales isolated from aquatic environments. KPC-producing *Enterobacter* spp., *Klebsiella* spp., *Citrobacter* spp., *Kluyvera* spp., *Escherichia coli*, *E. cloacae*, *Enterobacter kobei*, *E. asburiae*, *K. pneumoniae*, *Klebsiella oxytoca* and *Citrobacter freundii* complex have been isolated from river water, seawater, hospital sewage, wastewater treatment plants (WWTPs), drinking water and a hospital water dispenser [25–35]. KPC-2-producing *Citrobacter* spp., *Enterobacter* spp., *Klebsiella* spp., *Serratia* spp., *Raoultella* spp., *Kluyvera* spp., *Shigella* spp., *Escherichia* spp., *E. coli*, *K. pneumoniae*, *Klebsiella quasipneumoniae*, *K. oxytoca*, *E. cloacae* complex, *E. cloacae*, *E. kobei*, *E. asburiae*, *C. freundii*, *Citrobacter braakii*, *Citrobacter farmeri*, *Kluyvera georgiana*, *Kluyvera ascorbata*, *Kluyvera cryocrescens*, *Raoultella ornithinolytica*, *Raoultella planticola* and *Raoultella terrigena* have been isolated from rivers, hospital sewage, WWTPs, seawater and wells [24,36–57]. Another KPC variant, namely KPC-3, has been detected in *K. pneumoniae* isolated from wells and WWTPs in Italy [45,58], in *K. pneumoniae* cultivated from a Portuguese river [59], and in *E. coli* and *C. freundii* isolates obtained from WWTPs in the USA [57]. In addition, the new variant KPC-26 was first identified in *Klebsiella* spp. and *Enterobacter* spp. isolates obtained from seawater in Brazil [48]. Other Ambler class A enzymes that have been shown to possess carbapenemase activity are some GES variants (for Guiana extended spectrum). The GES-5 enzyme has been detected in *K. pneumoniae* isolated from stream water [60], in *R. ornithinolytica* and *Citrobacter* sp. recovered from river water [57,59], in *Enterobacter* spp. isolates obtained from seawater [25,48], in *Citrobacter* spp., *E. coli*, *K. pneumoniae*, *K. oxytoca* and *E. cloacae* obtained from hospital sewage [53,61,62], in *E. cloacae* complex, in *K. pneumoniae* and in *R. ornithinolytica* isolated from WWTPs [53,57,63]. GES-6-producing *Citrobacter* spp., *E. coli* and *K. quasipneumoniae* have been isolated from hospital sewage in Taiwan [53]. In addition, the GES-16 enzyme has been detected in *Enterobacter* spp. and *Klebsiella* spp. isolates recovered from seawater [25,48] and in *K. pneumoniae* obtained from river water [42]. GES-20-producing *K. oxytoca* and *E. kobei* were isolated from river water in the Philippines [64]. Finally, a GES-24-producing *Klebsiella variicola* was isolated from a WWTP in Japan [53].

3.1.2. Other Gram-negative bacilli

Compared with Enterobacterales, few published reports have documented the isolation of class A carbapenemase-producing glucose-non-fermenting GNB from aqueous ecosystems. KPC-, KPC-2-, GES-5- and GES-16-producing *Acinetobacter* spp. and *Aeromonas* spp. isolates were recovered from WWTPs, hospital sewage, and river and seawater samples in the USA, Brazil and China [25,29,40,43,48,65]. In addition, the GES-31 carbapenemase was first described in an *Aeromonas punctata* isolate recovered from a

Table 1
Epidemiology of class A carbapenemase-producers detected in aquatic environments

Carbapenemase	Country	Source	Host(s) (n)	ST	Plasmid group	Reference	
GES-5	Brazil	Hospital sewage	<i>Klebsiella pneumoniae</i> (1) <i>Klebsiella oxytoca</i> (1)	–	–	[62]	
		Seawater	<i>Enterobacter</i> (2) <i>Aeromonas</i> (1), <i>Acinetobacter</i> (1)	– –	– –	[25] [48]	
	Japan	WWTP	<i>Raoultella ornithinolytica</i> (1) <i>Klebsiella pneumoniae</i> (1)	– ST2791	– –	[53]	
	Portugal	River	<i>Citrobacter</i> sp. (1) <i>Klebsiella pneumoniae</i> (4)	– ST961	– –	Inc3-16 –	[59] [60]
		Stream water	<i>Klebsiella pneumoniae</i> (4)	–	–	–	[53]
	Taiwan	Hospital sewage	<i>Klebsiella pneumoniae</i> (11)	ST11, ST15, ST19, ST16, ST844, ST2791, ST2785	–	–	[53]
			<i>Enterobacter cloacae</i> (1) <i>Escherichia coli</i> (6) <i>Citrobacter</i> (1)	ST928 ST744, ST49 –	– – –	– – –	– – –
	UK	Hospital sewage	<i>Klebsiella oxytoca</i> (6) <i>Enterobacter cloacae</i> complex (5)	–	–	–	[61]
		WWTP	<i>Klebsiella pneumoniae</i> (1)	–	–	–	[63]
	USA	River	<i>Raoultella ornithinolytica</i> (1)	–	–	–	[57]
		WWTP	<i>Enterobacter cloacae</i> complex (1)	ST595	–	–	
	GES-6	Taiwan	Hospital sewage	<i>Escherichia coli</i> (1)	ST540	–	[53]
				<i>Klebsiella quasipneumoniae</i> (5) <i>Citrobacter</i> (1)	ST1584, ST367 –	– –	– –
	GES-7 (BIC-1)	France	River	<i>Pseudomonas fluorescens</i> (1)	–	–	[67]
GES-16	Brazil	River	<i>Enterobacter kobei</i> (1), <i>Aeromonas</i> (1), <i>Acinetobacter</i> (1)	–	–	[42]	
		Seawater	<i>Klebsiella pneumoniae</i> (2), <i>Enterobacter</i> (2), <i>Klebsiella</i> (1)	ST1793, ST1794 – –	– – –	– – [25]	
GES-20	Philippines	River	<i>Klebsiella oxytoca</i> (1), <i>Enterobacter kobei</i> (1)	–	–	[64]	
GES-24	Japan	WWTP	<i>Klebsiella variicola</i> (1)	ST2790	–	[53]	
GES-31	Brazil	River	<i>Aeromonas punctata</i> (1)	–	–	[42]	
IMI-2	France	River	<i>Enterobacter asburiae</i> (1)	–	–	[23]	
	Spain	River	<i>Enterobacter cloacae</i> (1)	ST822	IncFIB	[24]	
	USA	River	<i>Enterobacter asburiae</i> (1)	–	–	[22]	
		Lake	<i>Enterobacter asburiae</i> (7)	–	–		
IMI-18	Philippines	River	<i>Enterobacter cloacae</i> (1)	–	–	[64]	
KPC	Brazil	Hospital sewage	<i>Pseudomonas aeruginosa</i> (14)	–	–	[117]	
	Egypt	Drinking water	<i>Klebsiella pneumoniae</i> (5)	–	–	[27]	
	Ireland	Hospital sewage	<i>Citrobacter freundii</i> (4)	–	–	[32]	
	Jordan	Drinking water	<i>Escherichia coli</i> (5)	–	–	[34]	
	Korea	Water dispenser	<i>Escherichia coli</i> (1)	–	–	[35]	
	Singapore	Hospital sewage	<i>Enterobacter cloacae</i> (1), <i>Enterobacter kobei</i> (1), <i>Enterobacter asburiae</i> (1)	–	–	[74]	

(continued on next page)

Table 1 (continued)

Carbapenemase	Country	Source	Host(s) (n)	ST	Plasmid group	Reference
			<i>Klebsiella pneumoniae</i> (8), <i>Citrobacter</i> (1), <i>Enterobacter</i> (9), <i>Pseudomonas</i> (4)	-	-	[28]
	USA	Hospital sewage	<i>Citrobacter freundii</i> , <i>Escherichia coli</i> , <i>Klebsiella pneumoniae</i> , <i>Klebsiella oxytoca</i> , <i>Aeromonas</i> , <i>Acinetobacter</i> (total, 40)	-	IncN	[92]
<i>Aeromonas</i> (23), <i>Serratia marcescens</i> (70), <i>Klebsiella pneumoniae</i> (1), <i>Klebsiella oxytoca</i> (6), <i>Enterobacter cloacae</i> complex (15), <i>Kluyvera intermedia</i> (1), <i>Pantoea</i> (3), <i>Citrobacter freundii</i> (12), <i>Raoultella</i> (4), other Enterobacteriaceae (6)		WWTP	-	-	[25]	
KPC-2	Austria	WWTP	<i>Escherichia coli</i> (21) <i>Escherichia coli</i> (2)	- -	[31] [30]	
	Brazil	Hospital sewage	<i>Klebsiella pneumoniae</i> (1)	ST1245	-	[39]
			<i>Klebsiella pneumoniae</i> (2)	-	-	[37]
			<i>Enterobacter</i> (1), <i>Enterobacter cloacae</i> (1), <i>Klebsiella pneumoniae</i> (11)	-	-	[47]
		Hospital sewage, WWTP	<i>Klebsiella</i> (25), <i>Enterobacter</i> (26), <i>Serratia</i> (3), <i>Raoultella</i> (4), <i>Kluyvera</i> (5)	-	-	[40]
		Mangroves	<i>Pseudomonas putida</i> (2), <i>Stenotrophomonas maltophilia</i> (4)	-	-	[68]
	Brazil	River	<i>Klebsiella pneumoniae</i> (3)	ST437, ST340	IncN	[41]
			<i>Aeromonas hydrophila</i> (1), <i>Aeromonas punctata</i> (2)	-	-	[42]
			<i>Klebsiella pneumoniae</i> (7)	ST1792, ST1791, ST1245, ST1793, ST1794, ST1795	-	
			<i>Enterobacter cloacae</i> (3), <i>Enterobacter kobei</i> (12) <i>Enterobacter asburiae</i> (6)	-	-	
			<i>Klebsiella pneumoniae</i> (1), <i>Enterobacter cloacae</i> (1)	-	-	[47]
		Seawater	<i>Enterobacter</i> (9), <i>Citrobacter</i> (1), <i>Kluyvera</i> (2) <i>Aeromonas</i> (1), <i>Enterobacter</i> (9), <i>Citrobacter</i> (1), <i>Kluyvera</i> (2)	-	-	[25]

(continued on next page)

Table 1 (continued)

Carbapenemase	Country	Source	Host(s) (n)	ST	Plasmid group	Reference
			<i>Citrobacter</i> (1), <i>Enterobacter</i> (65), <i>Klebsiella</i> (17), <i>Kluyvera</i> (2), <i>Serratia</i> (7), <i>Aeromonas</i> sp. (5)	-	-	[48]
	Bulgaria	WWTP	<i>Aeromonas</i> (4)	-	-	[40]
		River	<i>Enterobacter asburiae</i> (1)	-	-	[44]
	China	Hospital sewage	<i>Enterobacter cloacae</i> (3), <i>Citrobacter freundii</i> (5)	-	IncA/C	[38]
			<i>Citrobacter freundii</i> (1)	ST88	-	[85]
			<i>Citrobacter freundii</i> (1)	ST14	-	[52]
	China	Hospital sewage	<i>Enterobacter cloacae</i> (4) <i>Klebsiella pneumoniae</i> (4) <i>Klebsiella pneumoniae</i> (3), <i>Escherichia coli</i> (1), <i>Citrobacter</i> sp. (1), <i>Citrobacter braakii</i> (1), <i>Raoultella planticola</i> (2), <i>Enterobacter</i> sp. (1), <i>Enterobacter kobei</i> (1)	ST911, ST910, ST25, ST669 ST11, ST12	-	[52]
		River	<i>Aeromonas hydrophila</i> (3) <i>Citrobacter braakii</i> (2), <i>Citrobacter freundii</i> (2) <i>Escherichia coli</i> (4), <i>Kluyvera georgiana</i> (1)	-	-	[49]
		Wells	<i>Raoultella ornithinolytica</i> (1)	-	-	[51]
		WWTP	<i>Klebsiella</i> (10), <i>Shigella</i> (17), <i>Escherichia</i> (12) <i>Acinetobacter</i> (19), <i>Stenotrophomonas</i> (10), <i>Wautersiella</i> (9)	-	IncF	[43]
			<i>Raoultella terrigena</i> (1), <i>Escherichia coli</i> (8), <i>Kluyvera georgiana</i> (2), <i>Acinetobacter seohaensis</i> (3), <i>Shigella sonnei</i> (1)	-	-	[50]
	Croatia	River	<i>Klebsiella pneumoniae</i> (4)	ST258	IncFII	[56]
	Italy	WWTP	<i>Klebsiella pneumoniae</i> (1)	ST307	IncFIIK	[45]
	Japan	WWTP	<i>Klebsiella pneumoniae</i> (1) <i>Aeromonas caviae</i> (1)	ST11 ST13	IncFII, IncN IncP6	[54] [66]
	Philippines	Hospital sewage	<i>Aeromonas hydrophila</i> (1) <i>Citrobacter freundii</i> (1), <i>Klebsiella pneumoniae</i> (2)	-	-	[64]
		River	<i>Escherichia coli</i> (2), <i>Klebsiella pneumoniae</i> (2)	-	-	
	Portugal	River	<i>Escherichia coli</i> (1)	ST410	IncF	[36]
	Romania	Hospital sewage	<i>Klebsiella pneumoniae</i> (9)	-	-	[97]

(continued on next page)

Table 1 (continued)

Carbapenemase	Country	Source	Host(s) (n)	ST	Plasmid group	Reference
		River	<i>Klebsiella pneumoniae</i> (1)	–	–	[44]
	Spain	River	<i>Enterobacter cloacae</i> (1)	ST823	IncN, IncR, IncFIIK	[24]
			<i>Klebsiella pneumoniae</i> (1)	ST634	IncN, IncR, IncFIIK	
			<i>Klebsiella oxytoca</i> (1)	–	IncN, IncR, IncFIIK	
			<i>Escherichia coli</i> (3)	ST1434, ST5001, ST216	IncN, IncR, IncFIIK	
		WWTP	<i>Citrobacter freundii</i> (5), <i>Citrobacter braakii</i> (1), <i>Citrobacter farmeri</i> (1), <i>Enterobacter cloacae/asburiae</i> (5), <i>Klebsiella oxytoca</i> (6), <i>Klebsiella pneumoniae</i> (1), <i>Kluyvera ascorbata</i> (1), <i>Kluyvera cryocrescens</i> (2), <i>Raoultella ornithinolytica</i> (3)	–	IncP/6	[55]
	Switzerland	WWTP	<i>Klebsiella pneumoniae</i> (1)	ST258	–	[46]
		Hospital sewage	<i>Klebsiella pneumoniae</i> (4)	ST2256, ST512, ST258	–	
	Taiwan	Hospital sewage	<i>Enterobacter kobei</i> (1)	ST910	IncP6	[53]
			<i>Klebsiella quasipneumoniae</i> (1)	ST2786	IncP6	
	USA	River	<i>Enterobacter cloacae</i> (2)	ST1121, ST1122	–	[57]
			<i>Enterobacter cloacae</i> complex (2)	ST595, ST1028	–	
			<i>Klebsiella pneumoniae</i> (3)	ST3539, ST872, ST2793	–	
			<i>Klebsiella quasipneumoniae</i> (1)	ST138	–	
			<i>Klebsiella oxytoca</i> (2)	ST88, ST127	–	
		WWTP	<i>Aeromonas caviae</i> (2)	ST560, ST561, ST563	–	
			<i>Raoultella ornithinolytica</i> (1)	–	–	
			<i>Aeromonas caviae</i> (2)	ST564, ST562	–	
			<i>Enterobacter cloacae</i> complex (3)	ST131, ST928, ST595	–	
			<i>Enterobacter cloacae</i> (1)	ST41	–	
		<i>Enterobacter asburiae</i> (1)	ST24	–		
		<i>Citrobacter freundii</i> (1)	ST8	–		
KPC-3	Italy	Wells	<i>Klebsiella pneumoniae</i> (1)	ST258	IncFIIK	[45]
		WWTP	<i>Klebsiella pneumoniae</i> (20)	ST512	–	[58]
	Portugal	River	<i>Klebsiella pneumoniae</i> (9)	–	IncFIA-FII	[59]
	USA	WWTP	<i>Citrobacter freundii</i> (2)	ST413, ST11	–	[57]
KPC-26	Brazil	Seawater	<i>Escherichia coli</i> (1)	ST607	–	
			<i>Enterobacter</i> (2), <i>Klebsiella</i> (1)	–	–	[25]
SFC-1	Portugal	Drinking water	<i>Serratia fonticola</i> (1)	–	–	[20]
VCC-1	Germany	Seawater	<i>Vibrio cholerae</i> (3)	ST516	–	[69]

n, number of strains, ST, sequence type; WWTP, wastewater treatment plant.

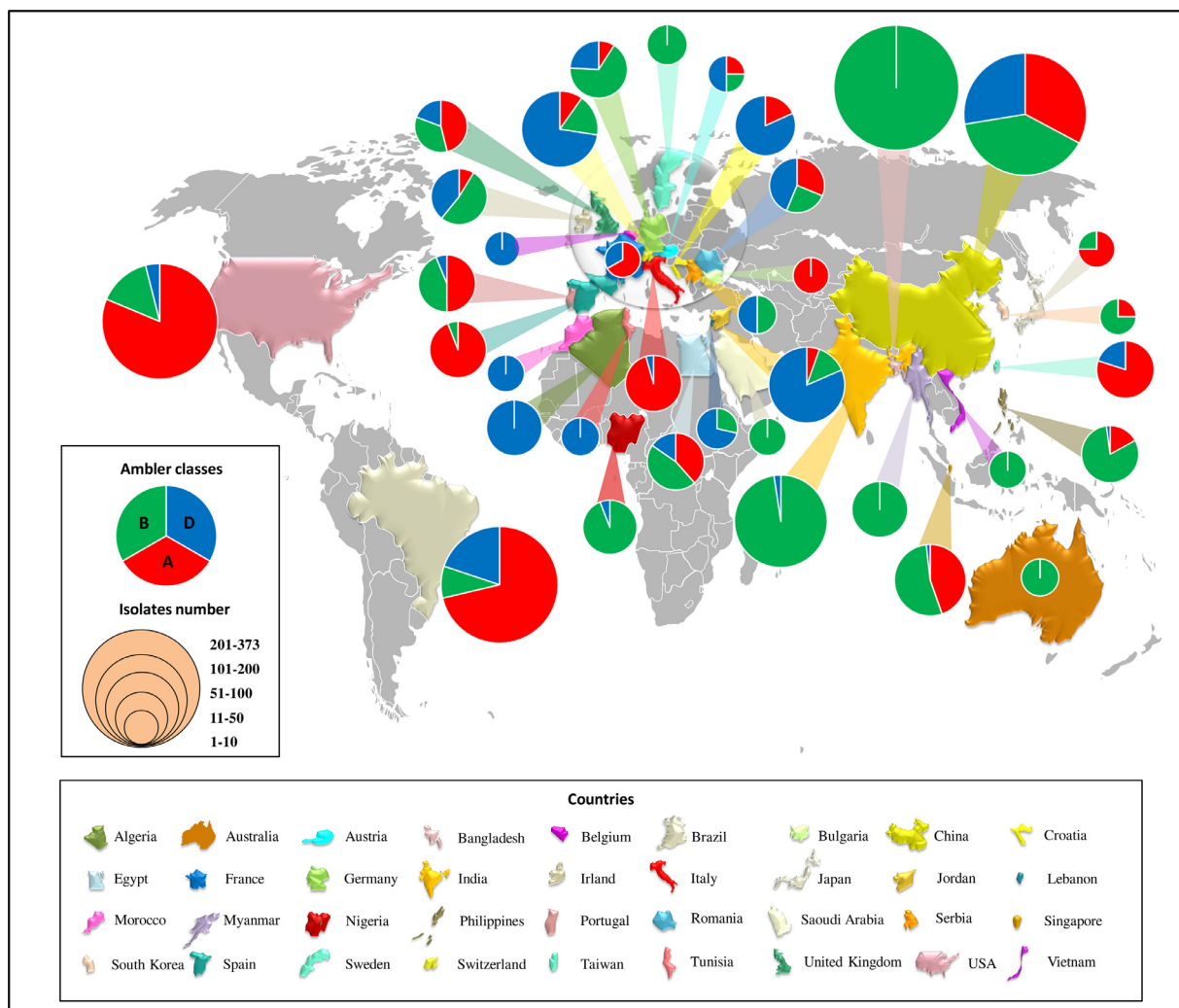


Fig. 1. Worldwide distribution of carbapenemase-producing Gram-negative bacteria in aquatic environments.

Brazilian river [42]. de Araujo et al. and Xu et al. have reported the isolation of KPC-2-producing *Aeromonas hydrophila* from rivers in Brazil and China, respectively [42,49]. Recently, KPC-2-producing *A. hydrophila* and *Aeromonas caviae* were recovered from river water and WWTP effluents [57,66].

Although rarely identified, Haller et al. have reported the isolation of KPC-producing *Pseudomonas* spp. from hospital sewage in Singapore [28]. Furthermore, BIC-1 (GES-7)-producing *Pseudomonas fluorescens* was obtained from a river in France [67]. More recently, Neto et al. have detected KPC-2-producing *Pseudomonas putida* in mangroves in Brazil [68].

In addition, KPC-2-producing *Stenotrophomonas* spp. and *Wautersiella* spp. isolates were recovered from a WWTP in China [43] and KPC-2-producing *Stenotrophomonas maltophilia* was recovered from mangroves in Brazil [68]. Finally, Hammerl et al. have documented the isolation of VCC-1 (for *Vibrio cholerae* carbapenemase)-producing *V. cholerae* from seawater in Germany [69].

3.2. Class B carbapenemases

Unlike class A carbapenemases, which were first reported in Enterobacteriales, the first acquired class B β -lactamase (BCII) was detected in a *Bacillus cereus* isolate in 1966 [70]. Owing to the fact that they use one or two zinc (Zn^{2+}) ions for their activ-

ity, these enzymes are also called metallo- β -lactamases (MBLs) [71] and this property makes them susceptible to inhibition by metallic ion chelators such as ethylene diamine tetra-acetic acid (EDTA) [72]. However, they are resistant to the commercially available β -lactamase inhibitors (clavulanic acid, tazobactam and sulbactam) [42]. MBLs breakdown all β -lactams except monobactams (aztreonam), with VIM, IMP and NDM groups being the most commonly identified acquired MBLs [15]. The global epidemiology of class B carbapenemases in aquatic environments is presented in Table 2 and Fig. 3.

3.2.1. Enterobacteriales

NDM enzymes are among the most newly characterised MBLs, which are widely distributed in Enterobacteriales species [73]. The *bla*_{NDM} genes have been detected in *E. cloacae*, *E. coli*, *C. freundii*, *C. braakii*, *C. farmeri*, *K. pneumoniae*, *K. oxytoca* and *Shigella boydii* isolated from municipal and hospital sewage [32,33,61,74–76]. Mahon et al. have reported the isolation of NDM-producing *E. coli* from recreational freshwater and wastewater [77]. Furthermore, NDM-producing *K. pneumoniae* and *K. quasipneumoniae* could also be isolated from sewage and seawater [76,77]. More worryingly, two studies have reported the isolation of NDM-producing *K. pneumoniae* and *E. coli* from drinking water in Egypt and Jordan, respectively [27,34]. Several NDM variants have been detected in Enterobacteriales species isolated from aqueous ecosys-

Table 2
Epidemiology of class B carbapenemase-producers detected in aquatic environments

Carbapenemase	Country	Source	Host(s) (n)	ST	Plasmid group	Reference
GIM	Germany	Clinical and urban WW	<i>Enterobacter cloacae</i> complex (1)	-	-	[76]
IMP	Ireland	Hospital sewage	<i>Klebsiella pneumoniae</i> (2)	ST3146	-	[32]
			<i>Enterobacter cloacae</i> complex (3)	-	-	[76]
IMP-1	Singapore	Hospital sewage	<i>Aeromonas caviae</i> (1)	-	-	[74]
	USA	WWTP	<i>Escherichia coli</i> (1)	-	-	[30]
	Brazil	Seawater	<i>Acinetobacter</i> (3)	-	-	[48]
IMP-4	UK	WWTP	<i>Enterobacter cloacae</i> (1)	-	-	[63]
	Australia	Hospital sink water	<i>Serratia marcescens</i> (4)	-	-	[104]
IMP-7	China	Incubator water	<i>Klebsiella pneumoniae</i> (1)	ST105	IncFI	[83]
		Hospital sewage	<i>Citrobacter freundii</i> (1)	-	-	[38]
IMP-8	Brazil	Seawater	<i>Acinetobacter</i> (1)	-	-	[48]
IMP-8	Portugal	River	<i>Escherichia coli</i> (2)	ST2612	IncFIB	[106]
	Spain	Hospital WW drainage system	<i>Klebsiella oxytoca</i> (1)	-	-	[105]
IMP-16	Taiwan	Hospital sewage	<i>Enterobacter hormaechei</i> (2)	ST90	-	[53]
			<i>Citrobacter</i> (1)	-	-	
IMP-19	Brazil	Seawater	<i>Acinetobacter</i> (4)	-	-	[48]
IMP-19	Taiwan	Hospital sewage	<i>Klebsiella quasipneumoniae</i> (1)	ST2789	-	[53]
IMP-25	China	Hospital sewage	<i>Pseudomonas</i> (1)	-	-	[116]
IMP-29	Sweden	WWTP	<i>Klebsiella oxytoca</i> (1)	ST192	-	[107]
KHM-1	Japan	WWTP	<i>Klebsiella quasipneumoniae</i> (1)	-	IncA/C2	[111]
NDM	Egypt	DW	<i>Klebsiella pneumoniae</i> (6)	-	-	[27]
	Germany	Clinical WW	<i>Enterobacter cloacae</i> complex (2), <i>Klebsiella oxytoca</i> (1)	-	-	[76]
Clinical and urban WW		<i>Klebsiella quasivariicola</i> (1), <i>Klebsiella pneumoniae</i> (3)	-	-		
NDM	Ireland	Hospital sewage	<i>Escherichia coli</i> (1)	ST617	-	[32]
		FSW, WW	<i>Escherichia coli</i> (5)	-	-	[77]
NDM	Jordan	Seawater	<i>Klebsiella pneumoniae</i> (11)	-	-	
		DW	<i>Escherichia coli</i> (12)	-	-	[34]
NDM	Singapore	Hospital sewage	<i>Enterobacter cloacae</i> (1), <i>Escherichia coli</i> (1), <i>Citrobacter freundii</i> (1)	-	-	[74]
			<i>Enterobacter cloacae</i> complex (2), <i>Citrobacter freundii</i> (4)	-	-	[61]
NDM-1	Bangladesh	Hospital sewage	<i>Klebsiella pneumoniae</i> (46), <i>Escherichia coli</i> (30), <i>Citrobacter freundii</i> (2), <i>Providencia rettgeri</i> (1), <i>Enterobacter</i> (9), <i>Acinetobacter baumannii</i> (8), <i>Acinetobacter pittii</i> (4), <i>Acinetobacter baylyi</i> (1), <i>Acinetobacter</i> spp. (3)	-	-	[89]

(continued on next page)

Table 2 (continued)

Carbapenemase	Country	Source	Host(s) (n)	ST	Plasmid group	Reference
	Bangladesh	Wastewater	<i>Escherichia coli</i> (49)	ST101, ST648, ST405	IncX, IncFII	[81]
			<i>Klebsiella pneumoniae</i> (76), <i>Citrobacter freundii</i> (10)	–	–	
			<i>Pseudomonas</i> spp. (2), <i>Pseudomonas aeruginosa</i> (4), <i>Pseudomonas putida</i> (24), <i>Pseudomonas otitidis</i> (10), <i>Pseudomonas monteilii</i> (3), <i>Pseudomonas mendocina</i> (8), <i>Pseudomonas fulva</i> (3), <i>Pseudomonas oleovorans</i> (7), <i>Pseudomonas alcaligenes</i> (1), <i>Pseudomonas pseudoalcaligenes</i> (3), <i>Aeromonas caviae</i> (1), <i>Acinetobacter baumannii</i> (2), <i>Acinetobacter tandoii</i> (4), <i>Acinetobacter townneri</i> (5), unidentified (15)	–	–	
	Brazil	Seawater	<i>Klebsiella pneumoniae</i> (1)	ST11	IncA/C	[84]
			<i>Klebsiella</i> (1)	–	–	[48]
	China	Animal waste	<i>Escherichia coli</i> (1)	–	–	[93]
			<i>Citrobacter freundii</i> (2)	ST416	–	[98]
			<i>Cronobacter sakazakii</i> (1)	–	IncX3	
			<i>Klebsiella pneumoniae</i> (1)	ST3410	IncA/C	
			<i>Providencia rettgeri</i> (1)	–	–	
			<i>Enterobacter cloacae</i> (1)	ST591	IncA/C	
		Hospital sewage	<i>Acinetobacter johnsonii</i> (2)	–	–	[113]
	China	Hospital sewage	<i>Acinetobacter baumannii</i> (10)	–	–	[114]
			<i>Citrobacter freundii</i> (1)	ST88	IncX4	[85]
			<i>Enterobacter cloacae</i> (2)	ST910	IncX3	[52]
			<i>Citrobacter freundii</i> (2)	ST19, ST22		
			<i>Acinetobacter chinensis</i> (2)	–	–	[115]
			<i>Kluyvera cryocrescens</i> (1)	–	–	[94]
			<i>Raoultella planticola</i> (1), <i>Escherichia coli</i> (3), <i>Citrobacter</i> sp. (1), <i>Acinetobacter</i> (11)	–	–	[96]
		Incubator water	<i>Klebsiella pneumoniae</i> (1)	ST105	IncFI	[83]
		River	<i>Acinetobacter seohaensis</i> (2), <i>Stenotrophomonas maltophilia</i> (1)	–	IncA/C	[86]
			<i>Escherichia coli</i> (1), <i>Acinetobacter</i> (1)	–	–	[96]

(continued on next page)

Table 2 (continued)

Carbapenemase	Country	Source	Host(s) (n)	ST	Plasmid group	Reference
		WWTP	<i>Achromobacter</i> sp. (1)	–	–	[122]
			<i>Escherichia coli</i> (3), <i>Shigella sonnei</i> (2), <i>Acinetobacter seohaensis</i> (4), <i>Wautersiella falsenii</i> (1)	–	IncA/C	[43]
	India	Hospital sewage	<i>Escherichia coli</i> (1)	–	–	[80]
			<i>Escherichia coli</i> (1), <i>Citrobacter freundii</i> (7)	–	IncFIC, IncHI1, IncFIA, IncP, InkI1	[75]
			<i>Acinetobacter baumannii</i> (11), <i>Acinetobacter calcoaceticus</i> (1), <i>Acinetobacter junii</i> (1), <i>Aeromonas hydrophila</i> (2)	–	–	[95]
	India	Hospital sewage	<i>Aeromonas veronii</i> (2), <i>Cronobacter malonaticus</i> (1), <i>Enterobacter cancerogenus</i> (1), <i>Enterobacter cloacae</i> (1), <i>Enterobacter kobei</i> (1), <i>Enterobacter ludwigii</i> (1), <i>Escherichia coli</i> (14), <i>Klebsiella pneumoniae</i> (10), <i>Klebsiella aerogenes</i> (1)	–	–	[95]
		River, lake, DW	<i>Klebsiella pneumoniae</i> (3), <i>Shigella</i> (2), <i>Escherichia coli</i> (1), <i>Citrobacter freundii</i> (1), <i>Pseudomonas</i> (3)	–	–	[79]
		Seawater	<i>Pseudomonas putida</i> (2), <i>Pseudomonas pseudoalcaligenes</i> (2), <i>Pseudomonas oryzae</i> (1), <i>Suttonella indologenes</i> (1), <i>Aeromonas caviae</i> (1), <i>Stenotrophomonas maltophilia</i> (1), <i>Vibrio cholerae</i> (1)	–	IncA/C	[78]
		Tap water	<i>Achromobacter</i> spp. (2), <i>Kingella denitrificans</i> (1), <i>Pseudomonas aeruginosa</i> (1)	–	–	
	Lebanon	WWTP	<i>Escherichia coli</i> (2)	–	IncA/C, IncFIIK	[87]
		Hospital sewage	<i>Enterobacter cloacae</i> (2)	–	–	[90]
	Myanmar	Hospital sewage	<i>Citrobacter freundii</i> (1)	–	IncX3	[91]
			<i>Klebsiella pneumoniae</i> (1)	ST147	IncX3	
	Nigeria	Seawater	<i>Vibrio parahaemolyticus</i> (1), <i>Vibrio vulnificus</i> (5)	–	–	[123]

(continued on next page)

Table 2 (continued)

Carbapenemase	Country	Source	Host(s) (n)	ST	Plasmid group	Reference
	Philippines	Hospital sewage	<i>Klebsiella pneumoniae</i> (4), <i>Klebsiella oxytoca</i> (1), <i>Enterobacter cloacae</i> (4), <i>Enterobacter xiangfangensis</i> (1), <i>Citrobacter amalonaticus</i> (1), <i>Serratia marcescens</i> (1), <i>Kluyvera ascorbata</i> (1)	–	–	[64]
		River	<i>Escherichia coli</i> (1), <i>Klebsiella pneumoniae</i> (1), <i>Enterobacter cloacae</i> (1), <i>Enterobacter tabaci</i> (1), <i>Enterobacter xiangfangensis</i> (1), <i>Enterobacter hormaechei</i> (1), <i>Citrobacter freundii</i> (1)	–	–	
	Portugal	River	<i>Enterobacter</i> spp. (3)	–	IncA/C2	[59]
	Romania	Hospital sewage	<i>Klebsiella pneumoniae</i> (7)	–	–	[97]
		River	<i>Klebsiella pneumoniae</i> (1)	–	–	[44]
	Saudi Arabia	WWTP	<i>Escherichia coli</i> (1)	ST101	IncF	[82]
	Singapore	Hospital sewage	<i>Klebsiella pneumoniae</i> (3), <i>Enterobacter</i> (3), <i>Citrobacter</i> (6), <i>Pseudomonas</i> (9), <i>Acinetobacter</i> (4), <i>Aeromonas hydrophila</i> (1)	–	–	[28]
	South Korea	Hospital sinks	<i>Enterobacter cloacae</i> (1), <i>Citrobacter freundii</i> (1)	–	–	[35]
	Switzerland	Hospital sewage	<i>Citrobacter</i> sp. (1)	–	–	[46]
		WWTP	<i>Citrobacter</i> sp. (1)	–	–	
	Taiwan	Hospital sewage	<i>Klebsiella pneumoniae</i> (1)	ST11	–	[53]
	USA	River	<i>Escherichia coli</i> (1)	ST410	–	[57]
	Vietnam	River	<i>Klebsiella pneumoniae</i> (3)	–	–	[99]
	UK	WWTP	<i>Klebsiella pneumoniae</i> (1)	–	–	[63]
NDM-3	Bangladesh	Wastewater	<i>Escherichia coli</i> (3)	ST101	IncFII	[81]
NDM-4			<i>Escherichia coli</i> (1)	ST648	IncX, IncFII	
	India	Hospital sewage	<i>Escherichia coli</i> (1)	–	IncK	[100]
			<i>Escherichia coli</i> (8), <i>Citrobacter braakii</i> (2), <i>Citrobacter farmeri</i> (1)	–	IncFIA, IncP, IncY, IncFIB, IncFIC, IncHI1, IncI1	[75]
	Myanmar	Hospital sewage	<i>Enterobacter asburiae</i> (1), <i>Leclercia adecarboxylata</i> (1), <i>Citrobacter freundii</i> (2), <i>Klebsiella quasipneumoniae</i> (1)	–	IncX3	[91]
NDM-5	China	Animal waste	<i>Klebsiella pneumoniae</i> (3)	ST37, ST726	IncX3	[98]

(continued on next page)

Table 2 (continued)

Carbapenemase	Country	Source	Host(s) (n)	ST	Plasmid group	Reference	
NDM-7	China	Hospital sewage	<i>Klebsiella oxytoca</i> (1)	ST158			
			<i>Enterobacter cloacae</i> (4)	ST1			
		Hospital sewage	<i>Cronobacter sakazakii</i> (1)	–			
			<i>Citrobacter freundii</i> (9)	ST109			
			<i>Escherichia coli</i> (6)	ST6751, ST746			
			<i>Escherichia coli</i> (1)	ST410	IncX3	[101]	
			<i>Klebsiella pneumoniae</i> (3),	–	–	[96]	
			<i>Escherichia coli</i> (9),				
		<i>Acinetobacter</i> (1),					
		<i>Klebsiella variicola</i> (1)					
	River	<i>Klebsiella pneumoniae</i> (1),	–	–			
	<i>Escherichia coli</i> (1),						
	<i>Citrobacter freundii</i> (1)						
	India	Hospital sewage	<i>Escherichia coli</i> (6),	–	IncFIA, IncFIB, IncI1, IncFIC, IncP, IncY	[75]	
	Japan	WWTP, rivers	<i>Escherichia coli</i> (7)	–	IncFII	[87]	
		WWTP	<i>Escherichia coli</i> (1)	ST542	IncX3	[102]	
	Myanmar	Hospital sewage	<i>Klebsiella pneumoniae</i> (1)	–	IncFII	[91]	
	Philippines	River	<i>Escherichia coli</i> (4)	ST8453	–		
	Switzerland	WWTP	<i>Escherichia coli</i> (1)	–	–	[64]	
	Taiwan	WWTP	<i>Escherichia coli</i> (1)	ST617	–	[46]	
		Hospital sewage	<i>Escherichia coli</i> (1)	ST10, ST216, ST2914	IncX3	[53]	
	UK	WWTP	<i>Escherichia coli</i> (1)	–	–	[63]	
USA	WWTP	<i>Escherichia coli</i> (1)	ST167	–	[57]		
India	Hospital sewage	<i>Escherichia coli</i> (1),	–	IncFIA, IncFIB, IncP	[75]		
		<i>Citrobacter freundii</i> (1)					
	Myanmar	WWTP, rivers	<i>Escherichia coli</i> (5)	–	IncA/C	[87]	
	Philippines	Hospital sewage	<i>Escherichia coli</i> (1)	–	IncX3	[91]	
		Hospital sewage	<i>Escherichia coli</i> (2),	–	–	[64]	
			<i>Klebsiella pneumoniae</i> (1),				
			<i>Enterobacter cloacae</i> (3),				
			<i>Citrobacter freundii</i> (4)				
		River	<i>Escherichia coli</i> (3),	–	–		
			<i>Klebsiella pneumoniae</i> (1),				
			<i>Klebsiella oxytoca</i> (1),				
			<i>Citrobacter amalonaticus</i> (1),				
			<i>Raoultella ornithinolytica</i> (1)				
	USA	River	<i>Klebsiella pneumoniae</i> (1)	ST19	–	[57]	
NDM-9	South Korea	River	<i>Klebsiella variicola</i> (3)	–	IncFII(Y)	[103]	
	Switzerland	Hospital sewage	<i>Klebsiella pneumoniae</i> (1)	ST147	–	[46]	
Sfh-1	Portugal	DW	<i>Serratia fonticola</i> (1)	–	–	[110]	
SPM	Brazil	Hospital sewage	<i>Pseudomonas aeruginosa</i> (6)	–	–	[117]	
SPM-1	Brazil	Seawater	<i>Pseudomonas aeruginosa</i> (1)	–	–	[48]	
VIM	Brazil	Hospital sewage	<i>Pseudomonas aeruginosa</i> (14)	–	–	[117]	
	Germany	Hospital sewage	<i>Enterobacter cloacae</i> complex (1),	–	–	[76]	
			<i>Enterobacter aeruginosa</i> (1),				
			<i>Pseudomonas aeruginosa</i> (8)				

(continued on next page)

Table 2 (continued)

Carbapenemase	Country	Source	Host(s) (n)	ST	Plasmid group	Reference	
VIM-1	Germany	WWTP	<i>Pseudomonas aeruginosa</i> (1), <i>Escherichia coli</i> (3)	-	-	[108]	
	Ireland	Hospital sewage	<i>Klebsiella oxytoca</i> (1) <i>Enterobacter cloacae</i> complex (1)	ST202	-	[32]	
	Jordan	DW	<i>Escherichia coli</i> (75)	-	-	[34]	
	Switzerland	WWTP	<i>Enterobacter aerogenes</i> (1)	-	-	[46]	
	USA	WWTP	<i>Escherichia coli</i> (36)	-	-	[30]	
	Austria	River	<i>Enterobacter cloacae</i> (1)	-	IncHI2	[88]	
	Portugal	River	<i>Escherichia coli</i> (1)	ST167	IncFIB	[106]	
	Spain	River	<i>Raoultella ornithinolytica</i> (1)	-	IncR	[24]	
	Sweden	River	<i>Klebsiella oxytoca</i> (1)	ST172	-	[107]	
	Switzerland	Hospital sewage	<i>Citrobacter</i> (1), <i>Citrobacter freundii</i> (1)	-	-	[46]	
		River	<i>Escherichia coli</i> (1) <i>Klebsiella pneumoniae</i> (1)	ST393	-	[109]	
	VIM-2	Taiwan	Hospital sewage	<i>Klebsiella quasipneumoniae</i> (1)	ST2788	-	[53]
USA		River	<i>Raoultella planticola</i> (1)	-	-	[57]	
Brazil		Seawater	<i>Pseudomonas</i> (2)	-	-	[48]	
China		Hospital sewage	<i>Pseudomonas</i> (1)	-	-	[116]	
Portugal		River	<i>Pseudomonas putida</i> (1), <i>Pseudomonas geniculata</i> (1), <i>Pseudomonas monteilii</i> (1) <i>Pseudomonas</i> sp. (2)	-	-	[119]	
		Wastewater	<i>Pseudomonas pseudoalcaligenes</i> (1)	-	-	[118]	
Serbia		River	<i>Acinetobacter baumannii</i> (2)	-	-	[120]	
VIM-5		Nigeria	Wetlands	<i>Pseudomonas plecoglossicida</i> (6), <i>Pseudomonas guariconensis</i> (4)	-	-	[121]
VIM-34		Portugal	River	<i>Escherichia coli</i> (1)	ST354	-	[106]

n, number of strains; ST, sequence type; WW, wastewater; WWTP, wastewater treatment plant; DW, drinking water; FSW, fresh surface water.

tems. NDM-1-producing *Enterobacter* spp., *Klebsiella* spp., *Citrobacter* spp., *Shigella* spp., *E. coli*, *C. freundii*, *Citrobacter amalonaticus*, *Cronobacter malonaticus*, *Cronobacter sakazakii*, *S. boydii*, *K. pneumoniae*, *K. oxytoca*, *Klebsiella aerogenes*, *Kluyvera cryocrescens*, *K. ascorbata*, *Shigella sonnei*, *Providencia rettgeri*, *Enterobacter xiangfangensis*, *E. cloacae*, *Enterobacter tabaci*, *Enterobacter hormaechei*, *Enterobacter cancerogenus*, *Enterobacter ludwigii*, *S. marcescens* and *R. planticola* have been isolated from seawater, drinking water, rivers, lakes, hospital sewage, wastewater, WWTPs, irrigation water and animal sewage [28,35,44,46,48,52,53,57,59,63,64,75,78–99]. Only one study reported the isolation of an NDM-3-producer from an aquatic environment. The isolate was obtained from wastewater and was identified as *E. coli* sequence type 101 (ST101) [81]. In addition, an NDM-4 variant was detected in *E. coli*, *K. quasipneumoniae*, *C. freundii*, *C. braakii*, *C. farmeri*, *Leclercia adecarboxylata* and *E. asburiae* isolates obtained from hospital sewage and wastewater [75,81,91,100]. The NDM-5 enzyme was detected in *E. coli*, *K. pneumoniae*, *K. variicola*, *K. oxytoca*, *C. freundii*, *C. sakazakii*, *E. cloacae* and *S. boydii* isolates obtained from WWTPs, rivers, animal

waste and hospital sewage [28,46,57,63,64,87,91,96,98,101,102]. In addition, NDM-7-producers, namely *E. coli*, *C. freundii*, *C. amalonaticus*, *E. cloacae*, *K. pneumoniae*, *K. oxytoca* and *R. ornithinolytica*, have been recovered from WWTPs, rivers and hospital sewage [57,64,75,87,91]. Finally, NDM-9-producing *E. coli* and *K. variicola* have been isolated from WWTPs and river water, respectively [46,103].

Other important MBLs in GNB are the IMP enzymes. IMP-producing *E. coli*, *E. cloacae* complex and *K. pneumoniae* isolates have been recovered from US WWTPs and from Irish hospital sewage [30,32]. In addition, IMP-1-producing *E. cloacae* has been detected in WWTPs in the UK [63]. IMP-4-producing *C. freundii* and *S. marcescens* were isolated from hospital wastewater [38,104]. In China, an IMP-4-producing *K. pneumoniae* strain co-producing NDM-1 was isolated from incubator water in a neonatal intensive care unit (NICU). This strain was clonally related to NDM-1- and IMP-4-producing *K. pneumoniae* recovered from an outbreak in the same NICU, and the authors suggested that the incubator water may be a reservoir for the diffusion of such MBL-producing GNB

[83]. Furthermore, IMP-8-producing *K. oxytoca*, *Citrobacter* spp. and *E. hormaechei* and IMP-19-producing *K. quasipneumoniae* have been isolated from hospital wastewater [53,105]. In addition, Kieffer et al. have reported the isolation of IMP-8-producing *E. coli* from river water [106]. Recently, IMP-29-producing *K. oxytoca* ST192 was isolated from sewage of a WWTP in Sweden [107].

Further studies reported the detection of other MBLs among Enterobacterales isolated from water habitats. VIM-producing *E. coli*, *K. pneumoniae*, *K. oxytoca*, *Enterobacter aerogenes*, *E. cloacae* complex and *Enterobacter* spp. have been detected in drinking water, WWTPs and hospital sewage [30,32–34,46,76,108]. In addition, *bla*_{VIM-1}-harbouring *K. pneumoniae*, *K. variicola*, *E. coli*, *E. cloacae*, *R. planticola* and *R. ornithinolytica* and VIM-34-producing *E. coli* have been recovered from rivers [24,57,88,106,109]. Furthermore, VIM-1-producing *Citrobacter* spp., *E. coli*, *C. freundii* and *K. quasipneumoniae* have been isolated from hospital sewage [46,53]. In addition, a VIM-1-producing *K. oxytoca* ST172 isolate was recovered from a river in Sweden [107].

Other less common carbapenemases were also detected in water environments. This is the case with Sfh-1-producing *S. fonticola* isolated from drinking water in Portugal [110] and with GIM-producing *E. cloacae* complex (for Germany IMipenemase) isolated from urban and clinical wastewater in Germany [76]. In addition, the KHM-1 (Kyorin Health Science MBL-1) enzyme first described in a clinical isolate in Korea was detected in a *K. quasipneumoniae* isolated from a WWTP in Japan [111,112].

3.2.2. Other Gram-negative bacilli

Several studies have reported the detection of MBL-producing *Acinetobacter* and *Pseudomonas* species in environmental water habitats. NDM-1-producing *Acinetobacter* spp., *A. baumannii*, *Acinetobacter calcoaceticus*, *Acinetobacter junii*, *Acinetobacter johnsonii* and *Pseudomonas* spp. have been recovered from hospital sewage in Bangladesh, China, Singapore and the Philippines [28,64,89,96,113,114]. The occurrence of such superbugs in WWTPs was also described in some studies. NDM-1-producing *Pseudomonas* spp., *Acinetobacter* spp. and *Acinetobacter seohaensis* were detected in WWTPs in Bangladesh and China [81,86]. NDM-producing *Pseudomonas* and *Acinetobacter* species were also described in surface water. NDM-producing *Pseudomonas* spp. were isolated from rivers and lakes in India in 2013 [79]. In addition, NDM-1 producing *Acinetobacter* spp. and *A. seohaensis* were isolated from river water in China [86, 96] and NDM-1-producing *P. putida*, *Pseudomonas pseudoalcaligenes* and *Pseudomonas oryzae* were obtained from seawater in India [78]. Recently, Hu et al. have reported the description of NDM-1-producing *Acinetobacter chinensis*, a novel *Acinetobacter* species isolated from hospital sewage in China [115]. In addition, the NDM-5 variant was detected in *Acinetobacter* sp. isolated from hospital sewage in China [96]. Regarding IMP carbapenemases, four variants were detected in *Acinetobacter* and *Pseudomonas* species isolated from water. IMP-1, IMP-7 and IMP-16 variants were detected in *Acinetobacter* spp. isolates obtained from seawater in Brazil [48], and the IMP-25 variant was detected in *Pseudomonas* sp. recovered from hospital sewage in China [116]. VIM enzymes were also detected. Miranda et al. have reported the detection of VIM-producing *Pseudomonas* sp. in hospital sewage [117]. The VIM-2 carbapenemase was also detected in *Pseudomonas* sp., *P. pseudoalcaligenes* and *P. aeruginosa* from hospital sewage [76,116,118], in *Pseudomonas* spp., *P. putida*, *Pseudomonas monteilii* and *Pseudomonas geniculata* from river water [119], in *Pseudomonas* spp. from seawater [48] and in *A. baumannii* in river water [120]. Recently, VIM-5-producing *P. putida* group, namely *Pseudomonas plecoglossicida* and *Pseudomonas guariconensis*, were obtained from wetlands in Nigeria [121]. In addition, SPM (Sao Paulo metallo- β -lactamase)-producing *P. aeruginosa* and

SPM-1-producing *Pseudomonas* spp. were recovered from hospital sewage and seawater, respectively [48,117].

On the other hand, carbapenemase-producers belonging to several GNB genera, other than *Pseudomonas* and *Acinetobacter*, could also be detected in different aquatic habitats. NDM-1-producing *A. hydrophila* and *A. caviae* were recovered from hospital sewage in Singapore and the Philippines and from seawater in India [28,64,78]. In addition, *bla*_{IMP}-harbouring *A. caviae* was isolated from hospital wastewater in India [78]. Luo et al. have reported the isolation of NDM-1-producing *Achromobacter* sp. from a WWTP in China [122]. Isolates of *V. cholerae*, *Vibrio parahaemolyticus* and *Vibrio vulnificus* isolated from seawater in India and Nigeria were found to be NDM-1-producers [78,123]. NDM-1-producing *S. maltophilia* isolates were obtained from river and seawater in China and India, respectively [78,86]. Finally, NDM-1-producing *Suttonella indologenes* and *Wautersiella falsenii* were isolated from seawater and a WWTP, respectively [78,86].

3.3. Class D carbapenemases

Only some variants of the class D β -lactamases possess carbapenemase activity, the so-called carbapenem-hydrolysing class D β -lactamases (CHDLs) [19]. The first identified class D carbapenemase was the OXA-23 enzyme, which was detected in an *A. baumannii* isolate from the UK in 1985 [3]. Subsequently, several CHDLs have been reported, mostly in *Acinetobacter* spp. However, the most prevalent CHDL in Enterobacterales, OXA-48, was reported in 2001 in Turkey from a clinical *K. pneumoniae* isolate [3,13]. Class D carbapenemases are serine enzymes that are resistant to inhibition by the commercially available β -lactamase inhibitors (clavulanic acid, tazobactam and sulbactam), although they are inhibited in vitro by NaCl [124]. Notably, despite their significant activity, all class D carbapenemases do not confer a high level of carbapenem resistance owing to their weak carbapenem-hydrolysing activity [19,124].

3.3.1. Enterobacterales

The most reported CHDL among Enterobacterales isolated from different aqueous environments is the phantom menace, the OXA-48 enzyme (Table 3; Fig. 4). OXA-48-producers belonging to different Enterobacterales genera and species including *Citrobacter* spp., *E. coli*, *K. pneumoniae*, *K. oxytoca*, *C. freundii*, *C. braakii*, *Citrobacter youngae*, *C. farmeri*, *E. cloacae*, *E. aerogenes*, *E. kobei*, *S. marcescens*, *P. rettgeri*, *R. ornithinolytica* and *C. malonaticus* have been cultivated from wastewater and WWTPs, hospital sewage, puddles, rivers, estuaries, spring water, irrigation water, fountain water, seawater, water dam and drinking water in different parts of the world [27,32,39,46,63,75,92,97,108,125–130]. Although OXA-48-type is the most prevalent, other variants were reported among different Enterobacterales. OXA-48-like-producing *K. oxytoca* has been isolated from hospital sewage in Algeria [131]. More recently, the *bla*_{OXA-48-like} gene was detected in *K. pneumoniae* and *E. coli* strains isolated from seawater in Ireland [132]. In addition, Antonelli et al. have reported the isolation of OXA-372-producing *C. freundii* from hospital sewage in Italy [133]. Furthermore, OXA-370-producing *Citrobacter* sp. was recovered from seawater in Brazil. OXA-181-producing *E. coli* and *K. pneumoniae* were cultivated from hospital sewage in Switzerland and from a WWTP in the UK, respectively [46,63]. In addition, OXA-181-producing *E. coli* has been isolated from drinking water in the USA [128]. Another OXA-48-like variant, namely OXA-204, has been detected in a *C. braakii* isolate recovered from a WWTP in Tunisia [134]. Furthermore, OXA-244-producing *E. coli* isolates were obtained from river water in Algeria and from estuaries in Lebanon [126,127]. In China, Xin et al. reported the isolation of OXA-58-producing *Raoultella* from seawater [135]. More recently, OXA-655- and OXA-656-producing *E. coli*

Table 3
Epidemiology of class D carbapenemase-producers detected in aquatic environments

Carbapenemase	Country	Source	Host(s) (n)	ST	Plasmid group	Reference	
OXA-23	Algeria	Hospital sewage	<i>Acinetobacter baumannii</i> (2)	–	–	[131]	
	Brazil	Hospital sewage	<i>Acinetobacter baumannii</i> (3)	–	–	[138]	
		Seawater	<i>Acinetobacter</i> spp. (11)	–	–	[48]	
	Croatia	Hospital sewage	<i>Acinetobacter baumannii</i> (2)	–	–	[139]	
		Liquid manure	<i>Acinetobacter baumannii</i> (2)	ST195	–	[147]	
		WWTP	<i>Acinetobacter baumannii</i> (10)	–	–	[141]	
			<i>Acinetobacter baumannii</i> (1)	–	–	[143]	
			<i>Acinetobacter baumannii</i> (10)	ST2	–	[145]	
	France	River	<i>Acinetobacter baumannii</i> (1)	–	–	[137]	
	Romania	River	<i>Acinetobacter baumannii</i> (2)	–	–	[120]	
	Serbia	River	<i>Acinetobacter baumannii</i> (2)	–	–	[119]	
	OXA-24/40	Brazil	Seawater	<i>Acinetobacter</i> spp. (6)	–	–	[48]
		Croatia	WWTP	<i>Acinetobacter baumannii</i> (3)	–	–	[141]
		Nigeria	Surface water	<i>Acinetobacter baumannii</i> (1)	–	–	[146]
OXA-48	Serbia	River	<i>Acinetobacter baumannii</i> (1)	–	–	[119]	
	Algeria	Fountain water	<i>Raoultella ornithinolytica</i> (1)	–	Incl	[129]	
		Irrigation water	<i>Klebsiella pneumoniae</i> (1)	ST1393	–		
		River	<i>Klebsiella pneumoniae</i> (3)	ST133, ST2055, ST2192	–	[126]	
			<i>Raoultella ornithinolytica</i> (3), <i>Citrobacter braakii</i> (1), <i>Citrobacter freundii</i> (1) <i>Escherichia coli</i> (9)	–	–		
			<i>Klebsiella pneumoniae</i> (1) <i>Escherichia coli</i> (2)	ST559, ST38, ST212, ST1972, ST2142	Incl	[129]	
		Seawater	<i>Klebsiella pneumoniae</i> (1)	ST13	–		
		Spring water	<i>Cronobacter malonaticus</i> (1)	–	–		
		Dam water	<i>Klebsiella pneumoniae</i> (1)	–	–		
		WW	<i>Klebsiella pneumoniae</i> (2)	ST1878, ST1393, ST13	–		
		WWTP	<i>Enterobacter cloacae</i> (1)	ST527	–		
		WWTP	<i>Klebsiella pneumoniae</i> (1)	ST35	–		
Austria	WWTP	<i>Escherichia coli</i> (1)	ST38	–	[39]		
		<i>Klebsiella pneumoniae</i> (1)	ST15	–			
Belgium	Hospital WW (sinks)	<i>Citrobacter freundii</i> (5)	–	–	[130]		
Egypt	DW	<i>Klebsiella pneumoniae</i> (2)	–	–	[27]		
Germany	Clinical and urban WW	<i>Klebsiella pneumoniae</i> (3)	ST253, ST11	–	[76]		
	WWTP	<i>Escherichia coli</i> (3)	–	–	[108]		
India	Hospital sewage	<i>Citrobacter braakii</i> (2), <i>Citrobacter farmeri</i> (1)	–	IncFIC, IncP, IncHI1	[75]		
Ireland	Hospital sewage	<i>Enterobacter cloacae</i> complex (6), <i>Citrobacter freundii</i> (3)	–	–	[32]		
		<i>Klebsiella pneumoniae</i> (2)	ST3145, ST323	–			
Lebanon	Estuaries	<i>Klebsiella oxytoca</i> (1)	ST95	–			
		<i>Escherichia coli</i> (1)	ST354	Incl	[127]		
		<i>Klebsiella pneumoniae</i> (1)	ST16	Incl			
Morocco	Puddles	<i>Serratia marcescens</i> (2)	–	–	[125]		
Philippines	River	<i>Escherichia coli</i> (1)	–	–	[64]		
Portugal	River	<i>Shewanella xiamenensis</i> (1)	–	–	[140]		
Romania	Hospital sewage	<i>Klebsiella pneumoniae</i> (12)	–	–	[97]		

(continued on next page)

Table 3 (continued)

Carbapenemase	Country	Source	Host(s) (n)	ST	Plasmid group	Reference	
OXA-48-like	Switzerland	Hospital sewage	<i>Escherichia coli</i> (5)	ST215, ST38, ST393	–	[46]	
			<i>Klebsiella pneumoniae</i> (3)	ST437, ST258	–		
		WWTP	<i>Enterobacter cloacae</i> (1), <i>Citrobacter freundii</i> (6), <i>Citrobacter youngae</i> (1), <i>Citrobacter spp.</i> (2)	–	–		
			<i>Escherichia coli</i> (9)	ST38, ST10, ST354, ST215	–		
	UK	WWTP	<i>Klebsiella pneumoniae</i> (3)	ST485, ST395, ST29	–		
			<i>Citrobacter freundii</i> (3), <i>Citrobacter sp.</i> (1)	–	–		
	USA	DW	<i>Raoultella ornithinolytica</i> (2), <i>Klebsiella oxytoca</i> (1), <i>Enterobacter kobei</i> (1)	–	IncL/M	[63]	
			<i>Escherichia coli</i> (1), <i>Providencia rettgeri</i> (1) <i>Shewanella</i> (2), <i>Pandoraea sputorum</i> (1), <i>Pseudomonas</i> (1)	–	–	[128]	
			<i>Klebsiella oxytoca</i> (2)	–	–	[131]	
		Ireland	Seawater	<i>Escherichia coli</i> (1)	ST131	–	[132]
	Singapore	Hospital sewage	<i>Klebsiella pneumoniae</i> (1)	ST101	–		
			<i>Aeromonas caviae</i> (1)	–	–	[74]	
OXA-58	Brazil	Seawater	<i>Acinetobacter spp.</i> (13)	–	–	[48]	
	China	Hospital sewage	<i>Acinetobacter spp.</i> (7)	–	–	[96]	
		Seawater	<i>Pseudomonas</i> (3), <i>Stenotrophomonas</i> (1), <i>Rheinheimera</i> (2), <i>Shewanella</i> (1), <i>Pseudoalteromonas</i> (1), <i>Algoriphagus</i> (1), <i>Bowmanella</i> (1), <i>Thalassospira</i> (1), <i>Raoultella</i> (1), <i>Vibrio</i> (1)	–	–	[135]	
	Germany	WWTP	<i>Acinetobacter lwoffii</i> (1), <i>Enterobacter cloacae</i> (1)	–	–	[108]	
OXA-72	Croatia	WWTP	<i>Acinetobacter baumannii</i> (2)	ST1	–	[145]	
OXA-143	Brazil	Seawater	<i>Acinetobacter spp.</i> (38)	–	–	[48]	
OXA-181	Algeria	River	<i>Shewanella xiamenensis</i> (1)	–	–	[144]	
	Philippines	Hospital sewage	<i>Escherichia coli</i> (1)	–	–	[64]	
		WWTP	<i>Escherichia coli</i> (3)	ST940, ST410	–	[46]	
	Switzerland						
	UK	WWTP	<i>Klebsiella pneumoniae</i> (1)	–	–	[63]	
	USA	DW	<i>Escherichia coli</i> (1)	–	–	[128]	
			<i>Acinetobacter baumannii</i> complex (1)	–	–		
OXA-199	Algeria	River	<i>Shewanella xiamenensis</i> (1)	–	–	[144]	
OXA-204	Tunisia	WWTP	<i>Citrobacter braakii</i> (1)	–	–	[134]	
	Portugal	River	<i>Shewanella xiamenensis</i> (1)	–	–	[140]	
OXA-244	Algeria	River	<i>Escherichia coli</i> (3)	ST3541	–	[126]	
	Lebanon	Estuaries	<i>Escherichia coli</i> (2)	ST38	IncHI2	[127]	
OXA-252	USA	DW	<i>Shewanella</i> (1), <i>Pseudomonas</i> (1), <i>Pseudomonas putida</i> (1)	–	–	[128]	
OXA-370	Brazil	Seawater	<i>Citrobacter sp.</i> (1)	–	–	[48]	
OXA-372	Italy	Hospital sewage	<i>Citrobacter freundii</i> (1)	–	IncA/C, IncN	[133]	
OXA-416	Algeria	Hospital sewage	<i>Shewanella xiamenensis</i> (1)	–	–	[141]	
OXA-538	Algeria	River	<i>Shewanella xiamenensis</i> (1)	–	–	[144]	
OXA-655	Brazil	Hospital	<i>Escherichia coli</i> (1)	ST401	IncQ1	[136]	
OXA-656		waste	<i>Enterobacter cloacae</i> (1)	ST24	IncQ1		
OXA-894	China	Animal waste	<i>Shewanella xiamenensis</i> (1)	–	–	[148]	

n, number of strains; ST, sequence type; WWTP, wastewater treatment plant; WW, wastewater; DW, drinking water.

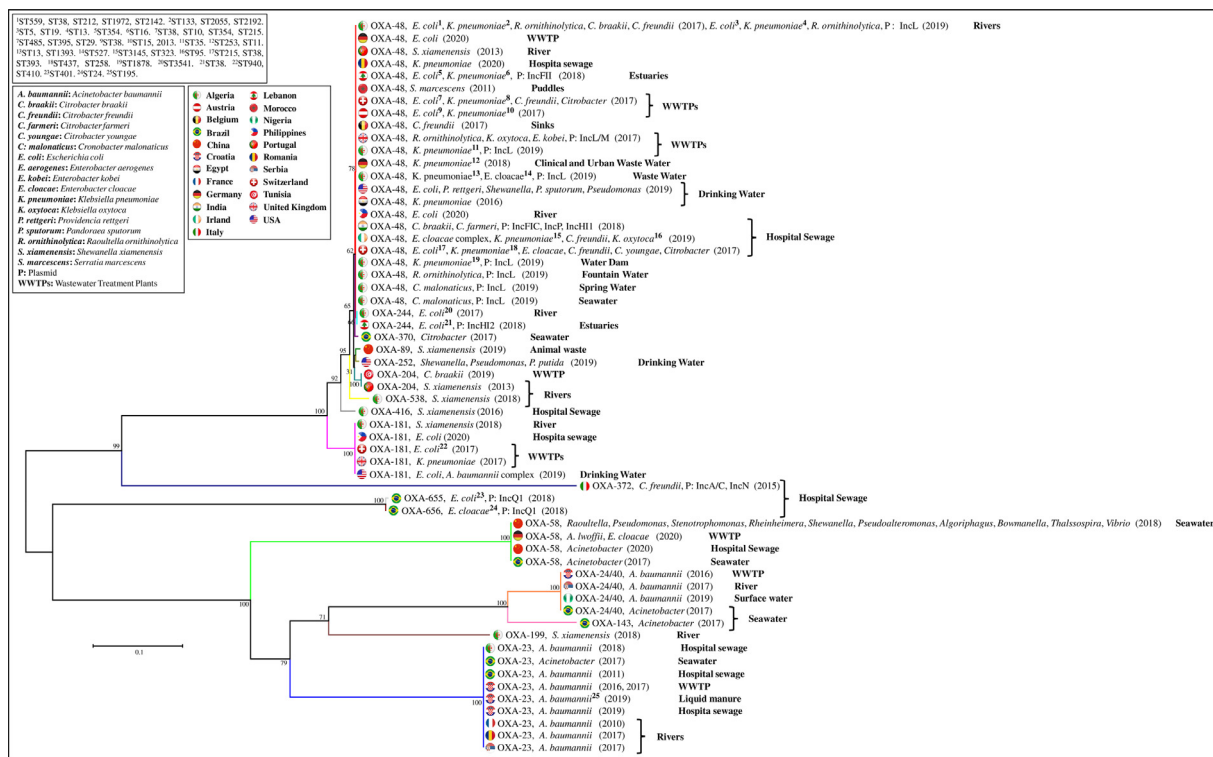


Fig. 4. Phylogenetic tree of class D carbapenemase variants detected in different aquatic environments. The evolutionary history was inferred using the neighbour-joining method. Evolutionary distances were computed using the Kimura 2-parameter method. The number above the nodes is the level of bootstrap from 1000 replicates.

and *E. cloacae* were isolated from hospital waste in Brazil [136]. Although mainly reported in *Acinetobacter* species, the OXA-58 carbapenemase was detected in an *E. cloacae* isolate recovered from a WWTP in Germany [108].

3.3.2. Other Gram-negative bacilli

The first OXA-23-producing *A. baumannii* environmental isolate was obtained from the Seine river in downtown Paris. The *bla*_{OXA-23} gene was chromosomally encoded and pulse-field gel electrophoresis (PFGE) revealed that the isolate was clonally related to a previously identified human isolate obtained in New Caledonia in June 2004 [137]. Thereafter, OXA-23-producing *A. baumannii* isolates were recovered from hospital sewage in Brazil [138] and Croatia [139]. Subsequently, different studies have reported the detection of CHDLs in different water habitats. OXA-48- and OXA-204-producing *Shewanella xiamenensis* isolates were obtained from a Portuguese river in 2013 [140]. In 2015, Koh et al. reported the isolation of an OXA-48-type carbapenemase-producing *A. caviae* from hospital sewage in Singapore [74]. In addition, OXA-23- and OXA-40/24-producing *A. baumannii* isolates were obtained from a WWTP in Croatia in 2016 [141]. In the same year, Yousfi et al. reported the isolation of OXA-416-producing *S. xiamenensis* from hospital sewage in Algeria [142]. In 2017, OXA-23- and OXA-24/40-producing *A. baumannii* isolates were obtained from river water in Romania and Serbia [120]. In the same year, Goic-Barisic et al. described the detection of OXA-23-producing *A. baumannii* in a WWTP in Croatia [143]. In another study published in 2017, OXA-23-, OXA-24/40-, OXA-51-, OXA-58- and OXA-143-producing *Acinetobacter* spp. were isolated from seawater in Brazil [48].

In 2018, only three studies reported the detection of CHDL-producing glucose-non-fermenting GNB in a water environment. The first report described the isolation of *S. xiamenensis* isolates producing OXA-181, OXA-199 and a new variant, OXA-538, from

river water in Algeria [144]. The second report documented the isolation of OXA-23-producing *A. baumannii* from hospital sewage also in Algeria [131]. The third study was from Croatia where the authors have reported the isolation of OXA-23- and OXA-72-producing *A. baumannii* isolates from a WWTP [145].

Recently, OXA-58-producing isolates belonging to different genera, namely *Pseudomonas* spp., *Rheinheimera* spp., *Stenotrophomonas* spp., *Shewanella* spp., *Vibrio*, *Pseudoalteromonas*, *Algoriphagus*, *Bowmanella* and *Thalassospira*, were obtained from seawater in China [135]. In addition, Tacão et al. reported the isolation of OXA-48-producing *Shewanella* spp., *Pseudomonas* spp. and *Pandoraea sputorum*, OXA-181-producing *A. baumannii* complex and OXA-252-producing *Shewanella* sp. from drinking water in the USA [140]. Recently, OXA-40-producing *A. baumannii*, OXA-58-producing *Acinetobacter* spp. and *Acinetobacter lwoffii* were detected in surface water, hospital sewage and a WWTP, respectively [96,108,146].

Animal waste has also been reported as a reservoir of carbapenemase-producing isolates. Hrenovic et al. reported the isolation of OXA-23-producing *A. baumannii* ST195 from liquid manure in Croatia [147]. Furthermore, the new OXA-48-like variant OXA-894 was first described in a *S. xiamenensis* isolated from pig wastewater [148].

3.4. Carbapenemase-encoding genes detected by culture-independent methods

In addition to culture-based techniques, culture-independent methods such as quantitative real-time PCR and metagenomics are increasingly used in studying antibiotic resistance in the environment [149]. With regard to carbapenemase determinants, the *bla* genes encoding carbapenemases of Ambler classes A, B and D were detected in different water environments worldwide. Regarding

class A carbapenemases, *bla*_{KPC} was detected in hospital sewage in Spain [150], Tunisia [151], Germany [76], Belgium [152] and India [153]. The KPC-encoding gene was also detected in rivers in Spain [150], India [154], Brazil [26,155], China [156] and Belgium [152], streams and lagoon water in Brazil [26,42], lake water in Poland [157] and Brazil [158], a fishpond and pig wastewater in China [159,160], municipal wastewater in India [154], Germany [161] and Belgium [152], and drinking water from a first nation community in Canada [162] and Brazil [155]. The *bla*_{GES-5} and *bla*_{GES-16} carbapenemase-encoding genes were also detected by culture-independent methods in WWTP and lagoon water, respectively [42,161]. In addition, *bla*_{IMI} was detected in lake water in Poland [157] and in river sediments in China [163]. Finally, *bla*_{SFC-1} was detected in lake water in Sweden [164].

Among the class B carbapenemase determinants, *bla*_{GIM}, *bla*_{NDM}, *bla*_{IMP}, *bla*_{SPM} and *bla*_{VIM} genes were detected in different water habitats, including hospital sewage, wastewater and WWTPs, animal waste, rivers, lakes, rice field, drinking water and drinking water treatment plants. Detection of these MBL-encoding genes in the abovementioned environments was reported from many countries, namely Spain [150], Tunisia [151], China [43,156,165–168], India [153,154,169,170], Italy [171], Brazil [26,42,155,158], Canada [162,172], Switzerland [173], Belgium [152], Singapore [174], the USA [158], Poland [157,175], Germany [176] and Sweden [164].

Regarding class D carbapenemases, *bla*_{OXA-48} determinants were detected by culture-independent methods in hospital sewage, wastewater and WWTPs, rivers, creeks, lakes, rice field and drinking water from Spain [150], Germany [176], Tunisia [151], India [153,154], Brazil [26,158], Belgium [152], Canada [162,172], Portugal [177], Poland [175] and Sweden [164,178]. In addition, the OXA-23-encoding gene has been detected in hospital sewage in Sweden [164]. Recently, *bla*_{OXA-58} was detected in drinking water in Germany [179] and hospital sewage in India [153].

4. Multilocus sequence typing (MLST) analysis

MLST is a widely used method for typing bacterial strains. It was described in 1998 and consists of the examination of nucleotide sequences of seven housekeeping gene fragments of approximately 500 nucleotides. Since then, this method has been used for different purposes including epidemiological surveillance and population analysis [180,181].

Among carbapenemase-producing bacteria isolated from aquatic environments, *K. pneumoniae*, *E. coli* and *E. cloacae* are the most characterised species by MLST. PHYLOViZ Online [182] was used for conducting phylogenetic analysis of sequence types (STs) of *K. pneumoniae*, *E. coli* and *E. cloacae* detected in aquatic environments. Our analysis revealed a remarkable diversity of STs detected, especially regarding *K. pneumoniae* and *E. coli*. Phylogenetic analysis of *K. pneumoniae*, *E. coli* and *E. cloacae* STs with the harboured carbapenemase class and their geographical areas are presented in Fig. 5. Regarding *K. pneumoniae*, all of the major epidemic high-risk international clones, namely ST11, ST15, ST101, ST147 and ST258 [183], have been detected in different countries. Of note, carbapenemases of Ambler classes A and D have been detected in ST258, known to be the most globally disseminated. Regarding *E. coli*, several international high-risk clones such as ST38, ST131, ST410 and ST648 [184] have been detected in water environments. ST38 has been largely associated with Ambler class D carbapenemases (OXA-48). This was also the case in water isolates, where all *E. coli* ST38 isolates harboured the *bla*_{OXA-48} gene as shown in Fig. 5. In contrast, STs of *E. cloacae* are mostly associated with Ambler class A carbapenemases and, unlike *K. pneumoniae* and *E. coli*, none of the most prevalent and widespread *E. cloacae* clones were detected in aquatic environments.

In addition, we investigated the isolation of carbapenemase-producing *K. pneumoniae*, *E. coli* and *E. cloacae* clones detected in water environments from human infections in the respective countries and the results are also shown in Fig. 5. Several carbapenemase-producing clones of *K. pneumoniae* and *E. coli* have been reported to cause human infections in countries where they were detected in aquatic environments [83,185–199]. Indeed, detection of the same clones with the same resistance mechanism in the same geographical area both in clinical and water isolates might be of great importance. This foretells the danger that the presence of these organisms in water can cause and suggests the potential participation of aquatic environments in the dissemination of these bacteria.

5. Conclusion

Carbapenems are among our last-resort antibiotics against drug-resistant pathogens, making carbapenem resistance a great health concern, especially that due to carbapenemase production. Knowledge of environmental reservoirs of resistant organisms and resistance genes is crucial in our quest to control their dissemination. The data presented here confirm the wide dissemination of carbapenemase-producers and carbapenemase-encoding genes in the natural environment and other water habitats, presenting a serious problem for human and animal health. In this review, we aimed to give an overview of the state of the art regarding the spread of carbapenemase-producing bacteria in different aquatic environments, which may help in implementing prevention and control strategies. Indeed, the interconnectedness between the environment and the health of humans, animals and plants makes the surveillance and control of the antibiotic resistance phenomenon a very difficult task. Hence the urgent need for an interdisciplinary collaboration to establish effective control and prevention strategies against the spread of carbapenemase-producing bacteria. In this context, the US National Action Plan for Combating Antibiotic-Resistant Bacteria (CARB) was created and will be followed over 5 years (2020–2025) in order to change the course of antibiotic resistance [https://aspe.hhs.gov/system/files/pdf/264126/CARB-National-Action-Plan-2020-2025.pdf]. The main goals of CARB are (i) slowing the emergence of resistant bacteria and preventing the spread of resistant infections, (ii) strengthening 'One Health' surveillance efforts to combat bacterial resistance, (iii) development and use of rapid and innovative diagnostic tools, (iv) development of new antibiotics, other therapies and vaccines and (v) improving international collaboration for prevention, surveillance, control, research and development of antibiotics. This plan integrates in parallel a 'One Health' approach with special emphasis on understanding antibiotic resistance in the environment. The application of such plans in other countries could help in the control of spread of drug-resistant bacteria. On the other hand, the application of obligatory reporting of antibiotic resistance in veterinary and human clinical settings, and possibly in water treatment facilities, will enable countries that do not have such surveillance plans assess contemporary prevention measures and target the areas of greatest concern [200]. In addition, it seems clear that wastewater, whatever its origin, is the main reservoir of resistant bacteria among all aquatic environments. Consequently, it should be a primary target for control and prevention efforts. Thus, developing effective wastewater treatment methods for removing or at least decreasing antibiotic-resistant bacteria and antibiotic resistance genes in the final effluent is strongly recommended.

Acknowledgments: This work was supported by the French Government under the 'Investments for the Future' program man-

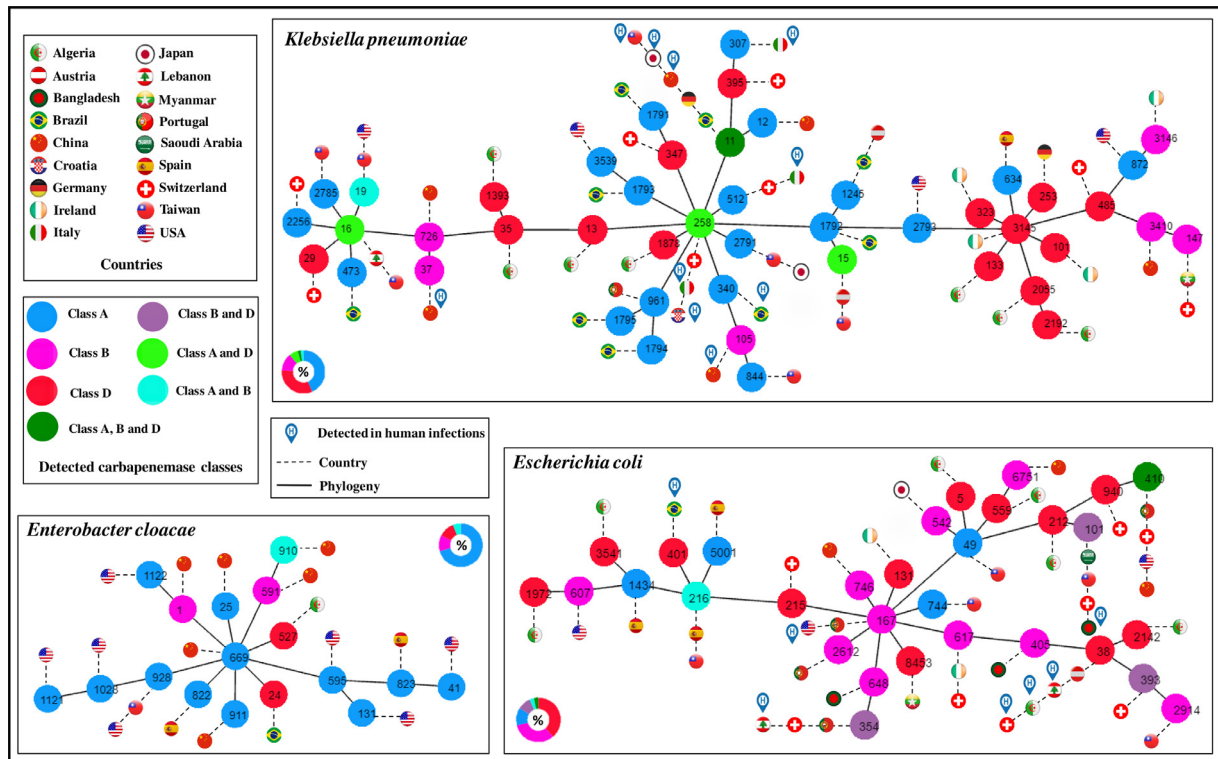


Fig. 5. Multilocus sequence typing (MLST) data set generated using PHYLOVIZ Online, indicating the sequence types (STs) of carbapenemase-producing *Klebsiella pneumoniae*, *Escherichia coli* and *Enterobacter cloacae* detected in aquatic environments with the respective carbapenemase class and geographical area.

aged by the National Agency for Research (ANR) [Méditerranée-Infection 10-IAHU-03].

Competing interests: None declared.

Ethical approval: Not required.

References

- Tacconelli E, Carrara E, Savoldi A, et al. Discovery, research, and development of new antibiotics: the WHO priority list of antibiotic-resistant bacteria and tuberculosis. *Lancet Infect Dis* 2018;18:318–27.
- Papp-Wallace KM, Endimiani A, Taracila MA, et al. Carbapenems: past, present, and future. *Antimicrob Agents Chemother* 2011;55:4943–60.
- Potter RF, D'Souza AW, Dantas G. The rapid spread of carbapenem-resistant Enterobacteriaceae. *Drug Resist Updat* 2016;29:30–46.
- Maltezou HC. Metallo- β -lactamases in Gram-negative bacteria: introducing the era of pan-resistance? *Int J Antimicrob Agents* 2009;33:405.e1–7.
- Diene SM, Rolain JM. Carbapenemase genes and genetic platforms in Gram-negative bacilli: Enterobacteriaceae, *Pseudomonas* and *Acinetobacter* species. *Clin Microbiol Infect* 2014;20:831–8.
- Nordmann P, Dortet L, Poirel L. Carbapenem resistance in Enterobacteriaceae: here is the storm!. *Trends Mol Med* 2012;18:263–72.
- Bakthavathalam YD, Anandan S, Veeraraghavan B. Laboratory detection and clinical implication of oxacillinase-48 like carbapenemase: the hidden threat. *J Glob Infect Dis* 2016;8:41–50.
- Jean SS, Lee WS, Lam C, et al. Carbapenemase-producing Gram-negative bacteria: current epidemics, antimicrobial susceptibility and treatment options. *Future Microbiol* 2015;10:407–25.
- Berglund B. Environmental dissemination of antibiotic resistance genes and correlation to anthropogenic contamination with antibiotics. *Infect Ecol Epidemiol* 2015;5:28564.
- Vaz-Moreira I, Nunes OC, Manaia CM. Bacterial diversity and antibiotic resistance in water habitats: searching the links with the human microbiome. *FEMS Microbiol Rev* 2014;38:761–78.
- Zhang XX, Zhang T, Fang HH. Antibiotic resistance genes in water environment. *Appl Microbiol Biotechnol* 2009;82:397–414.
- Manaia CM, Macedo G, Fatta-Kassinos D, et al. Antibiotic resistance in urban aquatic environments: can it be controlled? *Appl Microbiol Biotechnol* 2016;100:1543–57.
- Tamma PD, Simmer PJ. Phenotypic detection of carbapenemase-producing organisms from clinical isolates. *J Clin Microbiol* 2018;56:e011470–18.
- Bush K, Jacoby GA. Updated functional classification of β -lactamases. *Antimicrob Agents Chemother* 2010;54:969–76.
- Yoo JH. The Infinity War: how to cope with carbapenem-resistant Enterobacteriaceae. *J Korean Med Sci* 2018;33:e255.
- Oueslati S, Girlich D, Dortet L, et al. Evaluation of the AmpliCid CarbaR+VRE Kit for accurate detection of carbapenemase-producing bacteria. *J Clin Microbiol* 2018;56:e01092–17.
- Walther-Rasmussen J, Hoiby N. Class A carbapenemases. *J Antimicrob Chemother* 2007;60:470–82.
- Iovleva A, Doi Y. Carbapenem-resistant Enterobacteriaceae. *Clin Lab Med* 2017;37:303–15.
- Nordmann P, Poirel L. The difficult-to-control spread of carbapenemase producers among Enterobacteriaceae worldwide. *Clin Microbiol Infect* 2014;20:821–30.
- Henriques I, Moura A, Alves A, et al. Molecular characterization of a carbapenem-hydrolyzing class A β -lactamase, SFC-1, from *Serratia fonticola* UTAD54. *Antimicrob Agents Chemother* 2004;48:2321–4.
- Aubron C, Poirel L, Ash RJ, et al. Carbapenemase-producing Enterobacteriaceae, U.S. rivers. *Emerg Infect Dis* 2005;11:260–4.
- Harmon DE, Miranda OA, McCarley A, et al. Prevalence and characterization of carbapenem-resistant bacteria in water bodies in the Los Angeles-Southern California area. *Microbiol Open* 2018;8:e00692.
- Laurens C, Jean-Pierre H, Licznar-Fajardo P, et al. Transmission of IMI-2 carbapenemase-producing Enterobacteriaceae from river water to human. *J Glob Antimicrob Resist* 2018;15:88–92.
- Piedra-Carrasco N, Fabrega A, Calero-Caceres W, et al. Carbapenemase-producing Enterobacteriaceae recovered from a Spanish river ecosystem. *PLoS One* 2017;12:e0175246.
- Montezzi LF, Campana EH, Correa LL, et al. Occurrence of carbapenemase-producing bacteria in coastal recreational waters. *Int J Antimicrob Agents* 2015;45:174–7.
- Sanchez DG, de Melo FM, Savazzi EA, et al. Detection of different β -lactamases encoding genes, including *bla_{NDM}*, and plasmid-mediated quinolone resistance genes in different water sources from Brazil. *Environ Monit Assess* 2018;190:407.
- Hamza E, Dorgham SM, Hamza DA. Carbapenemase-producing *Klebsiella pneumoniae* in broiler poultry farming in Egypt. *J Glob Antimicrob Resist* 2016;7:8–10.
- Haller L, Chen H, Ng C, et al. Occurrence and characteristics of extended-spectrum β -lactamase- and carbapenemase-producing bacteria from hospital effluents in Singapore. *Sci Total Environ* 2018;615:1119–25.
- Weingarten RA, Johnson RC, Conlan S, et al. Genomic analysis of hospital plumbing reveals diverse reservoir of bacterial plasmids conferring carbapenem resistance. *mBio* 2018;9:e02011–17.
- Hoelle J, Johnson JR, Johnston B, et al. Survey of US wastewater for carbapenem-resistant Enterobacteriaceae. *J Water Health* 2019;17:219–26.
- Haberecht HB, Nealon NJ, Gilliland JR, et al. Antimicrobial-resistant *Escherichia*

- coli* from environmental waters in Northern Colorado. J Environ Public Health 2019;2019:3862949.
- [32] Cahill N, O'Connor L, Mahon B, et al. Hospital effluent: a reservoir for carbapenemase-producing Enterobacteriales? Sci Total Environ 2019;672:618–24.
- [33] Sakkas H, Bozidis P. Antimicrobial resistance in bacterial pathogens and detection of carbapenemases in *Klebsiella pneumoniae* isolates from hospital wastewater. Antibiotics (Basel) 2019;8:85.
- [34] Swedan S, Abu Alrub H. Antimicrobial resistance, virulence factors, and pathotypes of *Escherichia coli* isolated from drinking water sources in Jordan. Pathogens 2019;8:86.
- [35] Jung J, Choi HS, Lee JY, et al. Outbreak of carbapenemase-producing Enterobacteriaceae associated with a contaminated water dispenser and sink drains in the cardiology units of a Korean hospital. J Hosp Infect 2020;104:476–83.
- [36] Poirel L, Barbosa-Vasconcelos A, Simoes RR, et al. Environmental KPC-producing *Escherichia coli* isolates in Portugal. Antimicrob Agents Chemother 2012;56:1662–3.
- [37] Chagas TP, Seki LM, da Silva DM, et al. Occurrence of KPC-2-producing *Klebsiella pneumoniae* strains in hospital wastewater. J Hosp Infect 2011;77:281.
- [38] Zhang X, Lu X, Zong Z. Enterobacteriaceae producing the KPC-2 carbapenemase from hospital sewage. Diagn Microbiol Infect Dis 2012;73:204–6.
- [39] Galler H, Feierl G, Peternel C, et al. KPC-2 and OXA-48 carbapenemase-harboring Enterobacteriaceae detected in an Austrian wastewater treatment plant. Clin Microbiol Infect 2014;20:O132–4.
- [40] Picao RC, Cardoso JP, Campana EH, et al. The route of antimicrobial resistance from the hospital effluent to the environment: focus on the occurrence of KPC-producing *Aeromonas* spp. and Enterobacteriaceae in sewage. Diagn Microbiol Infect Dis 2013;76:80–5.
- [41] Oliveira S, Moura RA, Silva KC, et al. Isolation of KPC-2-producing *Klebsiella pneumoniae* strains belonging to the high-risk multiresistant clonal complex 11 (ST437 and ST340) in urban rivers. J Antimicrob Chemother 2014;69:849–52.
- [42] de Araujo CF, Silva DM, Carneiro MT, et al. Detection of carbapenemase genes in aquatic environments in Rio de Janeiro, Brazil. Antimicrob Agents Chemother 2016;60:4380–3.
- [43] Yang F, Mao D, Zhou H, et al. Prevalence and fate of carbapenemase genes in a wastewater treatment plant in Northern China. PLoS One 2016;11:e0156383.
- [44] Kittinger C, Lipp M, Folli B, et al. Enterobacteriaceae isolated from the River Danube: antibiotic resistances, with a focus on the presence of ESBL and carbapenemases. PLoS One 2016;11:e0165820.
- [45] Caltagirone M, Nucleo E, Spalla M, et al. Occurrence of extended spectrum β -lactamases, KPC-type, and MCR-1.2-producing Enterobacteriaceae from wells, river water, and wastewater treatment plants in Oltrepo Pavese Area, Northern Italy. Front Microbiol 2017;8:2232.
- [46] Zurfluh K, Bagutti C, Brodmann P, et al. Wastewater is a reservoir for clinically relevant carbapenemase- and 16S rRNA methylase-producing Enterobacteriaceae. Int J Antimicrob Agents 2017;50:436–40.
- [47] de Oliveira DV, Nunes LS, Barth AL, et al. Genetic background of β -lactamases in Enterobacteriaceae isolates from environmental samples. Microb Ecol 2017;74:599–607.
- [48] Paschoal RP, Campana EH, Correa LL, et al. Concentration and variety of carbapenemase producers in recreational coastal waters showing distinct levels of pollution. Antimicrob Agents Chemother 2017;61:e01963–17.
- [49] Xu H, Wang X, Yu X, et al. First detection and genomics analysis of KPC-2-producing *Citrobacter* isolates from river sediments. Environ Pollut 2018;235:931–7.
- [50] Yang F, Huang L, Li L, et al. Discharge of KPC-2 genes from the WWTPs contributed to their enriched abundance in the receiving river. Sci Total Environ 2017;581–582:136–43.
- [51] Sun P, Bi Z, Nilsson M, et al. Occurrence of *bla*_{KPC-2}, *bla*_{CTX-M}, and *mcr-1* in Enterobacteriaceae from well water in rural China. Antimicrob Agents Chemother 2017;61:e02569–16.
- [52] Jin L, Wang R, Wang X, et al. Emergence of *mcr-1* and carbapenemase genes in hospital sewage water in Beijing, China. J Antimicrob Chemother 2018;73:84–7.
- [53] Gomi R, Matsuda T, Yamamoto M, et al. Characteristics of carbapenemase-producing Enterobacteriaceae in wastewater revealed by genomic analysis. Antimicrob Agents Chemother 2018;62:e02501–17.
- [54] Sekizuka T, Yatsu K, Inamine Y, et al. Complete genome sequence of a *bla*_{KPC-2}-positive *Klebsiella pneumoniae* strain isolated from the effluent of an urban sewage treatment plant in Japan. mSphere 2018;3:e00314–18.
- [55] Yao Y, Lazaro-Perona F, Falgenhauer L, et al. Insights into a novel *bla*_{KPC-2}-encoding IncP-6 plasmid reveal carbapenem-resistance circulation in several Enterobacteriaceae species from wastewater and a hospital source in Spain. Front Microbiol 2017;8:1143.
- [56] Jelic M, Hrenovic J, Dekic S, et al. First evidence of KPC-producing ST258 *Klebsiella pneumoniae* in river water. J Hosp Infect 2019;103:147–50.
- [57] Mathys DA, Mollenkopf DF, Feicht SM, et al. Carbapenemase-producing Enterobacteriaceae and *Aeromonas* spp. present in wastewater treatment plant effluent and nearby surface waters in the US. PLoS One 2019;14:e0218650.
- [58] Perilli M, Bottoni C, Pontieri E, et al. Emergence of *bla*_{KPC-3}-*Tn4401a* in *Klebsiella pneumoniae* ST512 in the municipal wastewater treatment plant and in the university hospital of a town in central Italy. J Glob Antimicrob Resist 2013;1:217–20.
- [59] Teixeira P, Tacao M, Pureza L, et al. Occurrence of carbapenemase-producing Enterobacteriaceae in a Portuguese river: *bla*_{NDM}, *bla*_{KPC} and *bla*_{GES} among the detected genes. Environ Pollut 2020;260:113913.
- [60] Manageiro V, Ferreira E, Canica M, et al. GES-5 among the β -lactamases detected in ubiquitous bacteria isolated from aquatic environment samples. FEMS Microbiol Lett 2014;351:64–9.
- [61] White L, Hopkins KL, Meunier D, et al. Carbapenemase-producing Enterobacteriaceae in hospital wastewater: a reservoir that may be unrelated to clinical isolates. J Hosp Infect 2016;93:145–51.
- [62] Conte D, Palmeiro JK, da Silva Nogueira K, et al. Characterization of CTX-M enzymes, quinolone resistance determinants, and antimicrobial residues from hospital sewage, wastewater treatment plant, and river water. Ecotoxicol Environ Saf 2017;136:62–9.
- [63] Ludden C, Reuter S, Judge K, et al. Sharing of carbapenemase-encoding plasmids between Enterobacteriaceae in UK sewage uncovered by MinION sequencing. Microb Genom 2017;3:e000114.
- [64] Suzuki Y, Nazareno PJ, Nakano R, et al. Environmental presence and genetic characteristics of carbapenemase-producing Enterobacteriaceae from hospital sewage and river water in the Philippines. Appl Environ Microbiol 2020;86:e01906–19.
- [65] Mathers AJ, Vegesana K, German Mesner I, et al. Intensive care unit wastewater interventions to prevent transmission of multispecies *Klebsiella pneumoniae* carbapenemase-producing organisms. Clin Infect Dis 2018;67:171–8.
- [66] Sekizuka T, Inamine Y, Segawa T, et al. Potential KPC-2 carbapenemase reservoir of environmental *Aeromonas hydrophila* and *Aeromonas caviae* isolates from the effluent of an urban wastewater treatment plant in Japan. Environ Microbiol Rep 2019;11:589–97.
- [67] Girlich D, Poirel L, Nordmann P. Novel Ambler class A carbapenem-hydrolyzing β -lactamase from a *Pseudomonas fluorescens* isolate from the Seine River, Paris, France. Antimicrob Agents Chemother 2010;54:328–32.
- [68] Neto WRN, Araujo JMM, da Silva DF, et al. Detection of Gram-negative bacteria carrying the *bla*_{KPC-2} gene from mangrove sediments. J Pharm Pharmacol 2019;7:485–92.
- [69] Hammerl JA, Jackel C, Bortolaia V, et al. Carbapenemase VCC-1-producing *Vibrio cholerae* in coastal waters of Germany. Emerg Infect Dis 2017;23:1735–7.
- [70] Sabath LD, Abraham EP. Zinc as a cofactor for cephalosporinase from *Bacillus cereus* 569. Biochem J 1966;98 11C–3C.
- [71] Ju LC, Cheng Z, Fast W, et al. The continuing challenge of metallo- β -lactamase inhibition: mechanism matters. Trends Pharmacol Sci 2018;39:635–47.
- [72] Zahedi Bialvaei A, Samadi Kafil H, Ebrahimzadeh Leylabadlo H, et al. Dissemination of carbapenemases producing Gram negative bacteria in the Middle East. Iran J Microbiol 2015;7:226–46.
- [73] Potron A, Poirel L, Nordmann P. Emerging broad-spectrum resistance in *Pseudomonas aeruginosa* and *Acinetobacter baumannii*: mechanisms and epidemiology. Int J Antimicrob Agents 2015;45:568–85.
- [74] Koh TH, Ko K, Jureen R, et al. High counts of carbapenemase-producing Enterobacteriaceae in hospital sewage. Infect Control Hosp Epidemiol 2015;36:619–21.
- [75] Parvez S, Khan AU. Hospital sewage water: a reservoir for variants of New Delhi metallo- β -lactamase (NDM-) and extended-spectrum β -lactamase (ESBL)-producing Enterobacteriaceae. Int J Antimicrob Agents 2018;51:82–8.
- [76] Muller H, Sib E, Gajdiss M, et al. Dissemination of multi-resistant Gram-negative bacteria into German wastewater and surface waters. FEMS Microbiol Ecol 2018;94.
- [77] Mahon BM, Brehony C, McGrath E, et al. Indistinguishable NDM-producing *Escherichia coli* isolated from recreational waters, sewage, and a clinical specimen in Ireland, 2016 to 2017. Euro Surveill 2017;22:30513.
- [78] Walsh TR, Weeks J, Livermore DM, et al. Dissemination of NDM-1 positive bacteria in the New Delhi environment and its implications for human health: an environmental point prevalence study. Lancet Infect Dis 2011;11:355–62.
- [79] Shah TA, Zahra R. Screening of environment water for the presence of *bla*_{NDM-1} gene containing microorganisms. J Coll Physicians Surg Pak 2014;24:695–7.
- [80] Chandran SP, Diwan V, Tamhankar AJ, et al. Detection of carbapenem resistance genes and cephalosporin, and quinolone resistance genes along with *oqxAB* gene in *Escherichia coli* in hospital wastewater: a matter of concern. J Appl Microbiol 2014;117:984–95.
- [81] Toleman MA, Bugert JJ, Nizam SA. Extensively drug-resistant New Delhi metallo- β -lactamase-encoding bacteria in the environment, Dhaka, Bangladesh, 2012. Emerg Infect Dis 2015;21:1027–30.
- [82] Mantilla-Calderon D, Jumat MR, Wang T, et al. Isolation and characterization of NDM-positive *Escherichia coli* from municipal wastewater in Jeddah, Saudi Arabia. Antimicrob Agents Chemother 2016;60:5223–31.
- [83] Zheng R, Zhang Q, Guo Y, et al. Outbreak of plasmid-mediated NDM-1-producing *Klebsiella pneumoniae* ST105 among neonatal patients in Yunnan, China. Ann Clin Microbiol Antimicrob 2016;15:10.
- [84] Campana EH, Montezzi LF, Paschoal RP, et al. NDM-producing *Klebsiella pneumoniae* ST11 goes to the beach. Int J Antimicrob Agents 2017;49:119–21.
- [85] Wu W, Espedido B, Feng Y, et al. *Citrobacter freundii* carrying *bla*_{KPC-2} and *bla*_{NDM-1}: characterization by whole genome sequencing. Sci Rep 2016;6:30670.
- [86] Yang F, Mao D, Zhou H, et al. Propagation of New Delhi metallo- β -lactamase genes (*bla*_{NDM-1}) from a wastewater treatment plant to its receiving river. Environ Sci Technol Lett 2016;3:138–43.

- [87] Akiba M, Sekizuka T, Yamashita A, et al. Distribution and relationships of antimicrobial resistance determinants among extended-spectrum-cephalosporin-resistant or carbapenem-resistant *Escherichia coli* isolates from rivers and sewage treatment plants in India. *Antimicrob Agents Chemother* 2016;60:2972–80.
- [88] Zarfel G, Lipp M, Gurtl E, et al. Troubled water under the bridge: screening of River Mur water reveals dominance of CTX-M harboring *Escherichia coli* and for the first time an environmental VIM-1 producer in Austria. *Sci Total Environ* 2017;593–594:399–405.
- [89] Islam MA, Islam M, Hasan R, et al. Environmental spread of New Delhi metallo- β -lactamase-1-producing multidrug-resistant bacteria in Dhaka, Bangladesh. *Appl Environ Microbiol* 2017;83:e00793–17.
- [90] Daoud Z, Farah J, Sokhn ES, et al. Multidrug-resistant Enterobacteriaceae in Lebanese hospital wastewater: implication in the One Health concept. *Microb Drug Resist* 2018;24:166–74.
- [91] Sugawara Y, Akeda Y, Hagiya H, et al. Spreading patterns of NDM-producing Enterobacteriaceae in clinical and environmental settings in Yangon, Myanmar. *Antimicrob Agents Chemother* 2019;63:e01924–18.
- [92] Hmede Z, Sulaiman AAA, Jaafar H, et al. Emergence of plasmid-borne colistin resistance gene *mcr-1* in multidrug-resistant *Escherichia coli* isolated from irrigation water in Lebanon. *Int J Antimicrob Agents* 2019;54:102–4.
- [93] Yang F, Gu Y, Zhou J, et al. Swine waste: a reservoir of high-risk *bla*_{NDM} and *mcr-1*. *Sci Total Environ* 2019;683:308–16.
- [94] Li Y, Luo L, Xiao Z, et al. Characterization of a carbapenem-resistant *Kluyvera cryocrescens* isolate carrying *bla*_{NDM-1} from hospital sewage. *Antibiotics (Basel)* 2019;8:149.
- [95] Bardhan T, Chakraborty M, Bhattacharjee B. Prevalence of colistin-resistant, carbapenem-hydrolyzing Proteobacteria in hospital water bodies and out-falls of West Bengal, India. *Int J Environ Res Public Health* 2020;17:1007.
- [96] Zhang L, Ma X, Luo L, et al. The prevalence and characterization of extended-spectrum β -lactamase- and carbapenemase-producing bacteria from hospital sewage, treated effluents and receiving rivers. *Int J Environ Res Public Health* 2020;17:1182.
- [97] Surleac M, Czobor Barbu I, Paraschiv S, et al. Whole genome sequencing snapshot of multi-drug resistant *Klebsiella pneumoniae* strains from hospitals and receiving wastewater treatment plants in Southern Romania. *PLoS One* 2020;15:e0228079.
- [98] Zhai R, Fu B, Shi X, et al. Contaminated in-house environment contributes to the persistence and transmission of NDM-producing bacteria in a Chinese poultry farm. *Environ Int* 2020;139:105715.
- [99] Isozumi R, Yoshimatsu K, Yamashiro T, et al. *bla*_{NDM-1}-positive *Klebsiella pneumoniae* from environment, Vietnam. *Emerg Infect Dis* 2012;18:1383–5.
- [100] Khan AU, Parvez S. Detection of *bla*_{NDM-4} in *Escherichia coli* from hospital sewage. *J Med Microbiol* 2014;63:1404–6.
- [101] Long H, Feng Y, Ma K, et al. The co-transfer of plasmid-borne colistin-resistant genes *mcr-1* and *mcr-3.5*, the carbapenemase gene *bla*_{NDM-5} and the 16S methylase gene *rmtB* from *Escherichia coli*. *Sci Rep* 2019;9:696.
- [102] Sekizuka T, Inamine Y, Segawa T, et al. Characterization of NDM-5- and CTX-M-55-coproducing *Escherichia coli* GSH8M-2 isolated from the effluent of a wastewater treatment plant in Tokyo Bay. *Infect Drug Resist* 2019;12:2243–9.
- [103] Di DY, Jang J, Unno T, et al. Emergence of *Klebsiella varicola* positive for NDM-9, a variant of New Delhi metallo- β -lactamase, in an urban river in South Korea. *J Antimicrob Chemother* 2017;72:1063–7.
- [104] Kotsanas D, Wijesooriya WR, Korman TM, et al. Down the drain: carbapenem-resistant bacteria in intensive care unit patients and handwashing sinks. *Med J Aust* 2013;198:267–9.
- [105] Vergara-Lopez S, Dominguez MC, Conejo MC, et al. Wastewater drainage system as an occult reservoir in a protracted clonal outbreak due to metallo- β -lactamase-producing *Klebsiella oxytoca*. *Clin Microbiol Infect* 2013;19:E490–8.
- [106] Kieffer N, Poirel L, Bessa LJ, et al. VIM-1, VIM-34, and IMP-8 carbapenemase-producing *Escherichia coli* strains recovered from a Portuguese river. *Antimicrob Agents Chemother* 2016;60:2585–6.
- [107] Khan FA, Hellmark B, Ehrlich R, et al. Related carbapenemase-producing *Klebsiella* isolates detected in both a hospital and associated aquatic environment in Sweden. *Eur J Clin Microbiol Infect Dis* 2018;37:2241–51.
- [108] Schages L, Wichern F, Kalscheuer R, et al. Winter is coming—impact of temperature on the variation of β -lactamase and *mcr* genes in a wastewater treatment plant. *Sci Total Environ* 2020;712:136499.
- [109] Zurfluh K, Hachler H, Nuesch-Inderbinen M, et al. Characteristics of extended-spectrum β -lactamase- and carbapenemase-producing Enterobacteriaceae isolates from rivers and lakes in Switzerland. *Appl Environ Microbiol* 2013;79:3021–6.
- [110] Saavedra MJ, Peixe L, Sousa JC, et al. Sfh-I, a subclass B2 metallo- β -lactamase from a *Serratia fonticola* environmental isolate. *Antimicrob Agents Chemother* 2003;47:2330–3.
- [111] Suzuki Y, Ida M, Kubota H, et al. Multiple β -lactamase resistance gene-carrying plasmid harbored by *Klebsiella* quasipneumoniae isolated from urban sewage in Japan. *mSphere* 2019;4:e00391–19.
- [112] Sekiguchi J-i, Morita K, Kitao T, et al. KHM-1, a novel plasmid-mediated metallo- β -lactamase from a *Citrobacter freundii* clinical isolate. *Antimicrob Agents Chemother* 2008;52:4194.
- [113] Zong Z, Zhang X. *bla*_{NDM-1}-carrying *Acinetobacter johnsonii* detected in hospital sewage. *J Antimicrob Chemother* 2013;68:1007–10.
- [114] Zhang C, Qiu S, Wang Y, et al. Higher isolation of NDM-1 producing *Acinetobacter baumannii* from the sewage of the hospitals in Beijing. *PLoS One* 2014;8:e64857.
- [115] Hu Y, Feng Y, Qin J, et al. *Acinetobacter chinensis*, a novel *Acinetobacter* species, carrying *bla*_{NDM-1}, recovered from hospital sewage. *J Microbiol* 2019;57:350–5.
- [116] Hu Y, Wu W, Feng Y, et al. Draft genome sequence of a *Pseudomonas* sp. strain carrying *bla*_{IMP-25} and *bla*_{VIM-2} carbapenemase genes from hospital sewage. *Genome Announc* 2016;4:e01027–16.
- [117] Miranda CC, de Filippis I, Pinto LH, et al. Genotypic characteristics of multidrug-resistant *Pseudomonas aeruginosa* from hospital wastewater treatment plant in Rio de Janeiro, Brazil. *J Appl Microbiol* 2015;118:1276–86.
- [118] Quinteira S, Ferreira H, Peixe L. First isolation of *bla*_{VIM-2} in an environmental isolate of *Pseudomonas pseudoalcaligenes*. *Antimicrob Agents Chemother* 2005;49:2140–1.
- [119] Tacao M, Correia A, Henriques IS. Low prevalence of carbapenem-resistant bacteria in river water: resistance is mostly related to intrinsic mechanisms. *Microb Drug Resist* 2015;21:497–506.
- [120] Kittinger C, Kirschner A, Lipp M, et al. Antibiotic resistance of *Acinetobacter* spp. isolates from the River Danube: susceptibility stays high. *Int J Environ Res Public Health* 2017;15:52.
- [121] Adelowo OO, Vollmers J, Mausezahl I, et al. Detection of the carbapenemase gene *bla*_{VIM-5} in members of the *Pseudomonas putida* group isolated from polluted Nigerian wetlands. *Sci Rep* 2018;8:15116.
- [122] Luo Y, Yang F, Mathieu J, et al. Proliferation of multidrug-resistant New Delhi metallo- β -lactamase genes in municipal wastewater treatment plants in Northern China. *Environ Sci Technol Lett* 2013;1:26–30.
- [123] Oyelade AA, Adelowo OO, Fagade OE. *bla*_{NDM-1}-producing *Vibrio parahaemolyticus* and *V. vulnificus* isolated from recreational beaches in Lagos, Nigeria. *Environ Sci Pollut Res Int* 2018;25:33538–47.
- [124] Poirel L, Potron A, Nordmann P. OXA-48-like carbapenemases: the phantom menace. *J Antimicrob Chemother* 2012;67:1597–606.
- [125] Potron A, Poirel L, Bussy F, et al. Occurrence of the carbapenem-hydrolyzing β -lactamase gene *bla*_{OXA-48} in the environment in Morocco. *Antimicrob Agents Chemother* 2011;55:5413–14.
- [126] Tafoukt R, Touati A, Leangapichart T, et al. Characterization of OXA-48-like-producing Enterobacteriaceae isolated from river water in Algeria. *Water Res* 2017;120:185–9.
- [127] Diab M, Hamze M, Bonnet R, et al. Extended-spectrum β -lactamase (ESBL)- and carbapenemase-producing Enterobacteriaceae in water sources in Lebanon. *Vet Microbiol* 2018;217:97–103.
- [128] Tanner WD, VanDerslice JA, Goel RK, et al. Multi-state study of Enterobacteriaceae harboring extended-spectrum β -lactamase and carbapenemase genes in U.S. drinking water. *Sci Rep* 2019;9:3938.
- [129] Mairi A, Pantel A, Ousalem F, et al. OXA-48-producing Enterobacteriales in different ecological niches in Algeria: clonal expansion, plasmid characteristics and virulence traits. *J Antimicrob Chemother* 2019;74:1848–55.
- [130] De Geyter D, Blommaert L, Verbraeken N, et al. The sink as a potential source of transmission of carbapenemase-producing Enterobacteriaceae in the intensive care unit. *Antimicrob Resist Infect Control* 2017;6:24.
- [131] Yousfi K, Touati A, Lefebvre B, et al. Characterization of multidrug-resistant Gram-negative bacilli isolated from hospitals effluents: first report of a *bla*_{OXA-48}-like in *Klebsiella oxytoca*, Algeria. *Braz J Microbiol* 2019;50:175–83.
- [132] Mahon BM, Brehony C, Cahill N, et al. Detection of OXA-48-like-producing Enterobacteriales in Irish recreational water. *Sci Total Environ* 2019;690:1–6.
- [133] Antonelli A, D'Andrea MM, Vaggelli G, et al. OXA-372, a novel carbapenem-hydrolyzing class D β -lactamase from a *Citrobacter freundii* isolated from a hospital wastewater plant. *J Antimicrob Chemother* 2015;70:2749–56.
- [134] Sghaier S, Abbassi MS, Pascual A, et al. Extended-spectrum β -lactamase-producing Enterobacteriaceae from animal origin and wastewater in Tunisia: first detection of O25b-B23-CTX-M-27-ST131 *Escherichia coli* and CTX-M-15/OXA-204-producing *Citrobacter freundii* from wastewater. *J Glob Antimicrob Resist* 2019;17:189–94.
- [135] Xin R, Zhang K, Wu N, et al. The pollution level of the *bla*_{OXA-58} carbapenemase gene in coastal water and its host bacteria characteristics. *Environ Pollut* 2019;244:66–71.
- [136] Kotsakis SD, Flach CF, Razavi M, et al. Characterization of the first OXA-10 natural variant with increased carbapenemase activity. *Antimicrob Agents Chemother* 2018;63:e01817–18.
- [137] Girlich D, Poirel L, Nordmann P. First isolation of the *bla*_{OXA-23} carbapenemase gene from an environmental *Acinetobacter baumannii* isolate. *Antimicrob Agents Chemother* 2010;54:578–9.
- [138] Ferreira AE, Marchetti DP, De Oliveira LM, et al. Presence of OXA-23-producing isolates of *Acinetobacter baumannii* in wastewater from hospitals in southern Brazil. *Microb Drug Resist* 2011;17:221–7.
- [139] Bedenic B, Siroglavic M, Slade M, et al. Comparison of clinical and sewage isolates of *Acinetobacter baumannii* from two long-term care facilities in Zagreb; mechanisms and routes of spread. *Arch Microbiol* 2020;202:361–8.
- [140] Tacao M, Correia A, Henriques I. Environmental *Shewanella xiamenensis* strains that carry *bla*_{OXA-48} or *bla*_{OXA-204} genes: additional proof for *bla*_{OXA-48}-like gene origin. *Antimicrob Agents Chemother* 2013;57:6399–400.
- [141] Goic-Barisic I, Hrenovic J, Kovacic A, et al. Emergence of oxacillinases in environmental carbapenem-resistant *Acinetobacter baumannii* associated with clinical isolates. *Microb Drug Resist* 2016;22:559–63.
- [142] Yousfi K, Touati A, Lefebvre B, et al. A novel plasmid, pSx1, harboring a new Tn1696 derivative from extensively drug-resistant *Shewanella xiamenensis* encoding OXA-416. *Microb Drug Resist* 2017;23:429–36.

- [143] Goic-Barisic I, Seruga Music M, Kovacic A, et al. Pan drug-resistant environmental isolate of *Acinetobacter baumannii* from Croatia. *Microb Drug Resist* 2017;23:494–6.
- [144] Tafoukt R, Leangapichart T, Hadjadj L, et al. Characterisation of *bla*_{OXA-538}, a new variant of *bla*_{OXA-48}, in *Shewanella xiamenensis* isolated from river water in Algeria. *J Glob Antimicrob Resist* 2018;13:70–3.
- [145] Higgins PG, Hrenovic J, Seifert H, et al. Characterization of *Acinetobacter baumannii* from water and sludge line of secondary wastewater treatment plant. *Water Res* 2018;140:261–7.
- [146] Le Terrier C, Masseron A, Uwaezuoke NS, et al. Wide spread of carbapenemase-producing bacterial isolates in a Nigerian environment. *J Glob Antimicrob Resist* 2020;21:321–3.
- [147] Hrenovic J, Seruga Music M, Durn G, et al. Carbapenem-resistant *Acinetobacter baumannii* recovered from swine manure. *Microb Drug Resist* 2019;25:725–30.
- [148] Zou H, Zhou Z, Xia H, et al. Characterization of chromosome-mediated *bla*_{OXA-894} in *Shewanella xiamenensis* isolated from pig wastewater. *Int J Environ Res Public Health* 2019;16:3768.
- [149] Qiao M, Ying GG, Singer AC, et al. Review of antibiotic resistance in China and its environment. *Environ Int* 2018;110:160–72.
- [150] Subirats J, Royo E, Balcazar JL, et al. Real-time PCR assays for the detection and quantification of carbapenemase genes (*bla*_{KPC}, *bla*_{NDM}, and *bla*_{OXA-48}) in environmental samples. *Environ Sci Pollut Res Int* 2017;24:6710–14.
- [151] Nasri E, Subirats J, Sanchez-Melsio A, et al. Abundance of carbapenemase genes (*bla*_{KPC}, *bla*_{NDM} and *bla*_{OXA-48}) in wastewater effluents from Tunisian hospitals. *Environ Pollut* 2017;229:371–4.
- [152] Proia L, Anzil A, Borrego C, et al. Occurrence and persistence of carbapenemase genes in hospital and wastewater treatment plants and propagation in the receiving river. *J Hazard Mater* 2018;358:33–43.
- [153] Marathe NP, Berglund F, Razavi M, et al. Sewage effluent from an Indian hospital harbors novel carbapenemases and integron-borne antibiotic resistance genes. *Microbiome* 2019;7:97.
- [154] Lubbert C, Baars C, Dayakar A, et al. Environmental pollution with antimicrobial agents from bulk drug manufacturing industries in Hyderabad, South India, is associated with dissemination of extended-spectrum β -lactamase and carbapenemase-producing pathogens. *Infection* 2017;45:479–91.
- [155] Dias MF, da Rocha Fernandes G, Cristina de Paiva M, et al. Exploring the resistome, virulome and microbiome of drinking water in environmental and clinical settings. *Water Res* 2020;174:115630.
- [156] Tuo H, Yang Y, Tao X, et al. The prevalence of colistin resistant strains and antibiotic resistance gene profiles in Funan River, China. *Front Microbiol* 2018;9:3094.
- [157] Bondarczuk K, Piotrowska-Seget Z. Microbial diversity and antibiotic resistance in a final effluent-receiving lake. *Sci Total Environ* 2019;650:2951–61.
- [158] Bartley PS, Domitrovic TN, Moretto VT, et al. Antibiotic resistance in Enterobacteriaceae from surface waters in urban Brazil highlights the risks of poor sanitation. *Am J Trop Med Hyg* 2019;100:1369–77.
- [159] Klase G, Lee S, Liang S, et al. The microbiome and antibiotic resistance in integrated fishfarm water: implications of environmental public health. *Sci Total Environ* 2019;649:1491–501.
- [160] Yang F, Zhang K, Zhi S, et al. High prevalence and dissemination of β -lactamase genes in swine farms in Northern China. *Sci Total Environ* 2019;651:2507–13.
- [161] Girlich D, Poirel L, Szczepanowski R, et al. Carbapenem-hydrolyzing GES-5-encoding gene on different plasmid types recovered from a bacterial community in a sewage treatment plant. *Appl Environ Microbiol* 2012;78:1292–5.
- [162] Mi R, Patidar R, Fahrenhorst A, et al. Detection of fecal bacteria and antibiotic resistance genes in drinking water collected from three First Nations communities in Manitoba, Canada. *FEMS Microbiol Lett* 2019;366:fnz067.
- [163] Dang B, Mao D, Luo Y. Complete nucleotide sequence of pGA45, a 140,698-bp IncFII_Y plasmid encoding *bla*_{IMI-3}-mediated carbapenem resistance, from river sediment. *Front Microbiol* 2016;7:188.
- [164] Khan FA, Soderquist B, Jass J. Prevalence and diversity of antibiotic resistance genes in Swedish aquatic environments impacted by household and hospital wastewater. *Front Microbiol* 2019;10:688.
- [165] Wang Y, Zhang R, Li J, et al. Comprehensive resistome analysis reveals the prevalence of NDM and MCR-1 in Chinese poultry production. *Nat Microbiol* 2017;2:16260.
- [166] Wang RN, Zhang Y, Cao ZH, et al. Occurrence of super antibiotic resistance genes in the downstream of the Yangtze River in China: prevalence and antibiotic resistance profiles. *Sci Total Environ* 2019;651:1946–57.
- [167] Stange C, Yin D, Xu T, et al. Distribution of clinically relevant antibiotic resistance genes in Lake Tai, China. *Sci Total Environ* 2018;655:337–46.
- [168] Zhou ZC, Feng WQ, Han Y, et al. Prevalence and transmission of antibiotic resistance and microbiota between humans and water environments. *Environ Int* 2018;121:1155–61.
- [169] Rathinasabapathi P, Hiremath DS, Arunraj R, et al. Molecular detection of New Delhi metallo- β -lactamase-1 (NDM-1) positive bacteria from environmental and drinking water samples by loop mediated isothermal amplification of *bla*_{NDM-1}. *Indian J Microbiol* 2015;55:400–5.
- [170] Ahammad ZS, Sreerishnan TR, Hands CL, et al. Increased waterborne *bla*_{NDM-1} resistance gene abundances associated with seasonal human pilgrimages to the Upper Ganges River. *Environ Sci Technol* 2014;48:3014–20.
- [171] Gatica J, Tripathi V, Green S, et al. High throughput analysis of integron gene cassettes in wastewater environments. *Environ Sci Technol* 2016;50:11825–36.
- [172] Fernando DM, Tun HM, Poole J, et al. Detection of antibiotic resistance genes in source and drinking water samples from a First Nations Community in Canada. *Appl Environ Microbiol* 2016;82:4767–75.
- [173] Devarajan N, Laffite A, Graham ND, et al. Accumulation of clinically relevant antibiotic-resistance genes, bacterial load, and metals in freshwater lake sediments in Central Europe. *Environ Sci Technol* 2015;49:6528–37.
- [174] Le TH, Ng C, Tran NH, et al. Removal of antibiotic residues, antibiotic resistant bacteria and antibiotic resistance genes in municipal wastewater by membrane bioreactor systems. *Water Res* 2018;145:498–508.
- [175] Makowska N, Philips A, Dabert M, et al. Metagenomic analysis of β -lactamase and carbapenemase genes in the wastewater resistome. *Water Res* 2020;170:115277.
- [176] Voigt AM, Zacharias N, Timm C, et al. Association between antibiotic residues, antibiotic resistant bacteria and antibiotic resistance genes in anthropogenic wastewater—an evaluation of clinical influences. *Chemosphere* 2020;241:125032.
- [177] Tacao M, Silva I, Henriques I. Culture-independent methods reveal high diversity of OXA-48-like genes in water environments. *J Water Health* 2017;15:519–25.
- [178] Bengtsson-Palme J, Hammaren R, Pal C, et al. Elucidating selection processes for antibiotic resistance in sewage treatment plants using metagenomics. *Sci Total Environ* 2016;572:697–712.
- [179] Voigt AM, Ciorba P, Dohla M, et al. The investigation of antibiotic residues, antibiotic resistance genes and antibiotic-resistant organisms in a drinking water reservoir system in Germany. *Int J Hyg Environ Health* 2020;224:113449.
- [180] Maiden MC. Multilocus sequence typing of bacteria. *Annu Rev Microbiol* 2006;60:561–88.
- [181] Smith JM, Feil EJ, Smith NH. Population structure and evolutionary dynamics of pathogenic bacteria. *Bioessays* 2000;22:1115–22.
- [182] Ribeiro-Gonçalves B, Francisco AP, Vaz C, et al. PHYLOViZ Online: web-based tool for visualization, phylogenetic inference, analysis and sharing of minimum spanning trees. *Nucleic Acids Res* 2016;44:W246–51.
- [183] Brink AJ. Epidemiology of carbapenem-resistant Gram-negative infections globally. *Curr Opin Infect Dis* 2019;32:609–16.
- [184] Pitout JDD, Peirano G, Kock MM, et al. The global ascendancy of OXA-48-type carbapenemases. *Clin Microbiol Rev* 2019;33:e00102–19.
- [185] Uchida H, Tada T, Tohya M, et al. Emergence in Japan of an isolate of *Klebsiella pneumoniae* co-harboring *bla*_{KPC-2} and *rmtB*. *J Glob Antimicrob Resist* 2019;17:157–9.
- [186] Lu MC, Tang HL, Chiou CS, et al. Clonal dissemination of carbapenemase-producing *Klebsiella pneumoniae*: two distinct sub-lineages of sequence type 11 carrying *bla*_{KPC-2} and *bla*_{OXA-48}. *Int J Antimicrob Agents* 2018;52:658–62.
- [187] Fu P, Tang Y, Li G, et al. Pandemic spread of *bla*_{KPC-2} among *Klebsiella pneumoniae* ST11 in China is associated with horizontal transfer mediated by IncFII-like plasmids. *Int J Antimicrob Agents* 2019;54:117–24.
- [188] Jelic M, Butic I, Plecko V, et al. KPC-producing *Klebsiella pneumoniae* isolates in Croatia: a nationwide survey. *Microb Drug Resist* 2016;22:662–7.
- [189] García-Fernández A, Villa L, Carta C, et al. *Klebsiella pneumoniae* ST258 producing KPC-3 identified in Italy carries novel plasmids and *OmpK36/OmpK35* porin variants. *Antimicrob Agents Chemother* 2012;56:2143–5.
- [190] Loconsole D, Accogli M, De Robertis AL, et al. Emerging high-risk ST101 and ST307 carbapenem-resistant *Klebsiella pneumoniae* clones from bloodstream infections in Southern Italy. *Ann Clin Microbiol Antimicrob* 2020;19:24.
- [191] Pereira PS, de Araujo CF, Seki LM, et al. Update of the molecular epidemiology of KPC-2-producing *Klebsiella pneumoniae* in Brazil: spread of clonal complex 11 (ST11, ST437 and ST340). *J Antimicrob Chemother* 2013;68:312–16.
- [192] Zhu J, Sun L, Ding B, et al. Outbreak of NDM-1-producing *Klebsiella pneumoniae* ST76 and ST37 isolates in neonates. *Eur J Clin Microbiol Infect Dis* 2016;35:611–18.
- [193] Bonura C, Giuffrè M, Aleo A, et al. An update of the evolving epidemic of *bla*_{KPC} carrying *Klebsiella pneumoniae* in Sicily, Italy, 2014: emergence of multiple non-ST258 clones. *PLoS One* 2015;10:e0132936.
- [194] Khan ER, Aung MS, Paul SK, et al. Prevalence and molecular epidemiology of clinical isolates of *Escherichia coli* and *Klebsiella pneumoniae* harboring extended-spectrum β -lactamase and carbapenemase genes in Bangladesh. *Microb Drug Resist* 2018;24:1568–79.
- [195] Flerlage T, Brazelton de Cardenas JN, Garner CD, et al. Multiple NDM-5-expressing *Escherichia coli* isolates from an immunocompromised pediatric host. *Open Forum Infect Dis* 2020;7 ofaa018.
- [196] Dagher C, Salloum T, Alousi S, et al. Molecular characterization of carbapenem resistant *Escherichia coli* recovered from a tertiary hospital in Lebanon. *PLoS One* 2018;13:e0203323.
- [197] Falgenhauer L, Nordmann P, Imirzalioglu C, et al. Cross-border emergence of clonal lineages of ST38 *Escherichia coli* producing the OXA-48-like carbapenemase OXA-244 in Germany and Switzerland. *Int J Antimicrob Agents* 2020;56:106157.
- [198] Qin S, Zhou M, Zhang Q, et al. First identification of NDM-4-producing *Escherichia coli* ST410 in China. *Emerg Microbes Infect* 2016;5:e118.
- [199] Yagoubat M, Ould El-Hadj-Khelil A, Malki A, et al. Genetic characterisation of carbapenem-resistant Gram-negative bacteria isolated from the University Hospital Mohamed Boudiaf in Ouargla, southern Algeria. *J Glob Antimicrob Resist* 2017;8:55–9.
- [200] Sanderson H, Fricker C, Brown RS, et al. Antibiotic resistance genes as an emerging environmental contaminant. *Environ Res* 2016;24:205–18.