



HAL
open science

Lymphoid Tissue inducer (LTi) cell ontogeny and functioning in embryo and adult

Serge van de Pavert

► **To cite this version:**

Serge van de Pavert. Lymphoid Tissue inducer (LTi) cell ontogeny and functioning in embryo and adult. Biomedical journal, 2021, 44 (2), pp.123-132. 10.1016/j.bj.2020.12.003 . hal-03375131

HAL Id: hal-03375131

<https://amu.hal.science/hal-03375131v1>

Submitted on 13 Jun 2023

HAL is a multi-disciplinary open access archive for the deposit and dissemination of scientific research documents, whether they are published or not. The documents may come from teaching and research institutions in France or abroad, or from public or private research centers.

L'archive ouverte pluridisciplinaire **HAL**, est destinée au dépôt et à la diffusion de documents scientifiques de niveau recherche, publiés ou non, émanant des établissements d'enseignement et de recherche français ou étrangers, des laboratoires publics ou privés.



Distributed under a Creative Commons Attribution - NonCommercial 4.0 International License

Lymphoid Tissue Inducer (LTi) cell ontogeny and functioning in embryo and adult

Serge A. van de Pavert

Aix-Marseille Université, Centre National de la Recherche Scientifique (CNRS), Institut National de la Santé et de la Recherche Médicale (INSERM), Centre d'Immunologie de Marseille-Luminy (CIML), Marseille, France.

Address :

CIML, 163 Avenue de Luminy, case 906, Marseille 13288 cedex 09

Telephone :

+33-4 91 26 94 48

E-mail:

vandepavert@ciml.univ-mrs.fr

1 Lymphoid Tissue Inducer (LTi) cell ontogeny and functioning in embryo and adult

2

3 **Abstract**

4 Innate Lymphoid Cells (ILC) are involved in homeostasis and immunity. Their dynamic differentiation
5 and characterization depend on their tissue of residency and is adapted to their role within these
6 tissues. Lymphoid Tissue Inducer (LTi) cells are an ILC member and essential for embryonic lymph
7 node (LN) formation. LNs are formed at pre-defined and strategic positions throughout the body and
8 how LTi cells are initially attracted towards these areas is under debate. Besides their role in LN
9 formation, LTi-like and the closely related ILC type 3 (ILC3) cells have been observed within the
10 embryonic gut. New studies have now shown more information on their origin and differentiation
11 within the embryo.

12 This review will evaluate the embryonic LTi cell origin from a specific embryonic hemogenic wave,
13 which has recently been described in mouse. Moreover, I will discuss their differentiation and
14 similarities with the closely related ILC3 cells in embryo and adult.

15

16 **Keywords** ILC3, ILC, hemogenic endothelium, bone-marrow, hematopoietic stem cells (HSC), lymph
17 node

1 1. Introduction

2 The enigmatic Innate Lymphoid Cell (ILC) family consists of 3 main family members in which
3 transcription factors for development, marker expression and functionality are shared [1–3]. These
4 are the 1) ILC1 and natural killer cell (NK), 2) ILC2 and 3) ILC3 and Lymphoid Tissue Inducer (LTi) cell
5 members. Their role in defense and repair is versatile, as are their cues for differentiation *in situ*
6 determining their action. NK cells are considered cytotoxic ILCs, while generally other ILCs are
7 considered ILC-helper cells. The LTi cells were previously considered part of the ILC3 ontogeny, based
8 on retinoic acid orphan receptor isoform γ (ROR γ t) expression plus overlap in marker and cytokine
9 expression. However, in both human and mice, ILC3 progenitors cells require the transcription factor
10 promyelocytic leukemia zinc finger (Plzf)(encoded by gene Zinc finger and BTB domain containing 16 -
11 *Zbtb16*) for differentiation[4,5], while in the mouse *Zbtb16* knock-out LTi cells were still observed [6].
12 Therefore, LTi cells are now considered to be separate from ILC3 cells [7]. Additionally, evolutionary
13 the LTi cells emerged later when compared to the other ILCs, and their function in LN formation was
14 mainly associated with placentation[8,9].

15 LTi cells are essential for the formation of the secondary lymphoid organs during embryogenesis. They
16 interact with the Lymphoid Tissue organizer (LTo) cells at specific locations within the embryo to first
17 form aggregates which are named LN anlagen. There is some discussion on which cells attract the first
18 LTi cells involved in the initiation of LN formation when using different mouse models [10–12]. ILC3s,
19 which consists of Natural cytotoxicity triggering receptor 1 (NKp46)⁺ and NKp46⁻ (LTi-like) cells, have
20 immune modulatory and homeostatic roles within the gut. LTi cells have a unique function during
21 embryogenesis and are the first of the ILCs to be observed during embryogenesis [11]. In later
22 embryonic stages other ILCs were reported, mainly in gut and lung[13–15], but their role during
23 embryogenesis is unclear. ILCs were shown to be derived from the HSC lineage within the bone-
24 marrow in adult[16–19]. However, since there is no contribution from bone-marrow within the mouse
25 embryo, the embryonic ILCs, like embryonic LTi cells, are likely to be derived from another

1 hematopoietic lineage than from the HSC derived lineage. During adulthood, these embryonic LTi cells
2 are replaced by bone-marrow derived LTi cells. The role of replaced LTi cells in adult remains obscure.
3 In this review, I will discuss the role of the LTi cells within LN formation and evaluate the newest
4 insights on initiation of LN formation. Furthermore, I will discuss the new developments in LTi cell
5 ontogeny and functioning, also in relation to the closely related ILC3s.

6

7 **2. ILC ontogeny**

8 2.1 Hemogenic endothelium progenitors

9 During early embryogenesis, few endothelial cells undergo Endothelial to Hematopoietic cell
10 Transition (EHT) to become hematopoietic progenitor cells [20–22]. Small clusters of hematopoietic
11 progenitors appear within the yolk-sac and embryo, from which cells bud off and are transported
12 through the vascular system. Recent studies using single cell sequencing have contributed to the
13 understanding of the earliest genes to facilitate EHT, such as *CD44* and RUNX family transcription
14 factor 1 (*Runx1*)[23–25]. The first wave of hematopoietic progenitors originates from the yolk-sac and
15 occurs between embryonic gestation day 7.5 (E7.5) until around E9 in mouse. This wave includes
16 progenitors for microglia, erythroid-myeloid progenitors, neutrophils, and mast cells [26–28]. Later
17 lineages and progenitors for hematopoietic stem cell precursors (pre-HSCs) appear from embryonic
18 arterial walls between E8.5-E11.5 [20,21]. The most studied embryonic hemogenic site in different
19 organisms is the aorta-gonad-mesonephros (AGM)[29], although other hemogenic endothelial sites to
20 generate hematopoietic progenitors such as the vitelline artery, heart endocardium, head somitic
21 region and umbilical cord were described in mouse [30–33]. Macrophages located in the heart-valves
22 in mouse were shown to be derived from the heart endocardium [33]. However, it is not clear which
23 other specific hematopoietic lineages appear from these embryonic sites.

24 *In vitro* cultured mouse yolk-sac cells isolated at E8.5 had a potential to become NK cells [15]. To
25 directly show a relation between the yolk-sac and NK cells lineage tracing models are required. Simic
26 et al.[19] used the *Cxcr4-CreErt2* lineage tracing model to exclude a yolk-sac contribution as

1 chemokine receptor *Cxcr4* is not expressed within the yolk-sac [19,34,35]. Consequently, progenitors
2 from the yolk-sac don't express *Cxcr4*[35]. Lineage-tracing in the *Cxcr4-CreErt2* model only labelled
3 embryonic derived progenitors[35] and it was shown that LTi cell progenitors originated around E8.5
4 from an embryonic hemogenic source [19]. Since the first hemogenic clusters in the AGM are
5 observed after E8.5 [20,23], the LTi hemogenic source could either be the embryonic vitelline artery
6 or the AGM [32]. Described as active in later stages, other embryonic regions were less likely to be the
7 source for LTi cells [30,31,33]. The appearance of the embryonic LTi progenitors preceded the
8 appearance of the pre-HSCs, making it unlikely that embryonic LTi cells are derived from HSCs. On the
9 contrary, embryonic LTi cells involved in LN formation were replaced in the adult mice by bone-
10 marrow HSC derived LTi cells, as was also shown for ILC2s and some ILC3s [14,36]. In human, ILCs
11 were observed in the fetal gut but it has not been shown if they are HSC derived, nor if they will be
12 replaced in the neonate by ILCs from HSCs in the bone-marrow[37]. Interestingly, thymic LTi cells in
13 the mouse embryo around E18 were described to originate from HSC and could indicate the first LTi
14 cells to originate from a HSC origin [38]. How the HSC derived ILCs functionally relate to the embryonic
15 derived ILC they replace is not yet known.

16

17 2.2 Fetal Liver

18 Hematopoietic progenitors migrate from the hemogenic endothelial sites towards the fetal liver (FL).
19 Intriguingly, in mouse embryos the FL is mostly colonized around E11.5, so it is unclear where earliest
20 hematopoietic progenitors reside between E7.5-E11. Within the FL, progenitors expand and
21 differentiate toward precursors stages of their respective lineages, except for the microglial
22 precursors which differentiate within the brain[39]. The FL plays an important role in the expansion of
23 the progenitors as it was estimated that the progenitors multiply up to 33 times within this
24 environment [40].

25 Common Lymphoid Progenitors (CLP) are present within the FL and express Fms related receptor
26 tyrosine kinase 3 (Flt3)[7,19,41]. They are driven towards an ILC lineage by the expression of the

1 Inhibitor of DNA binding 2 (Id2), which inhibits Single-stranded DNA-binding protein (E2A) functioning
2 and thereby excludes commitment to a B-cell lineage [42]. At this stage, they are named $\alpha_4\beta_7$ -Integrin
3 expressing Lymphoid Precursor (α LP) cells. *Flt3* RNA transcripts were not observed in this stage, and
4 protein expression was detected on a α LP subset [7,19,43]. An α LP Flt3⁻ subset is sensitive to Notch
5 signaling and affects its proliferation [43] (please see the review by Golub *in this issue* for the role of
6 Notch in ILC differentiation). Within the α LP Flt3⁻ stage, transcription factor Plzf marks differentiation
7 into the ILC-Precursor (ILCP), which will generate ILC1, 2 and 3 cells in both human and mouse [4,5][6].
8 In adult mouse Plzf expression was reported to be lowered, while it remained high in human ILCs [4].
9 LTI-precursors (LTiP) in mouse, on the other hand, do not require Plzf, express chemokine receptors
10 CXCR5 and CXCR6, and appear to segregate from the other ILC populations [6,7,44,45](reviewed in
11 [46])(Figure 1). These chemokine receptors expressed during the LTiP stage could aid their migration
12 to- and retention within the LN anlagen, essential for the next phase in LTi differentiation.
13 The role of mature ILC3 and LTi cells within the mouse FL is unclear. Several studies reported on the
14 ROR γ t expressing (mature) ILC3 and LTi cells within the mouse FL [7,36,47]. On the other hand, the
15 number of LTi₀ and LTi₄ cells within the FL was very low compared to LN anlagen enriched tissue
16 [19,48]. Single cell sequencing of the FL and LN anlagen enriched tissue revealed that there was no
17 direct connection in ontogeny between LTiP and LTi cells within the FL, while this was evident within
18 the peripheral studied LTi cells[19]. Therefore, the final maturation would be most likely to occur
19 within the LN anlagen, and in this scenario LTi cells present within the FL migrated back from the
20 embryo.

21

22 2.3 LTi and ILC3s in LN anlagen and embryonic gut

23 α LP-LTiP cells migrate out from the FL towards the LN anlagen to differentiate into LTi₀ and finally the
24 mature LTi₄ cells. During this transition, ROR γ t expression is induced by retinoic acid which leads to LTi
25 lineage commitment. Lack of retinoic acid signaling within these cells halts LTi differentiation [49].
26 ROR γ t drives the transcriptional program for LTi cells in both human[50] and mice[51], although there

1 have been ROR γ t deficient LTi cells observed [51,52]. However, these are not sufficient for
2 continuation of LN formation, as *Rorc* (ROR γ t) knock-out mice are devoid of LN [51,53] and *RORc*
3 deficient humans did not have palpable LNs[50]. Notch was shown to be involved in proliferation of
4 the α LP population [43], but Notch signaling is not necessary for LTi commitment nor differentiation
5 [44](please see the review by Golub *in this issue* for the role of Notch in ILC differentiation). The LTi₀
6 cells do not yet express the molecules necessary for interaction with mesenchymal cell within the
7 lymph node anlagen niche[49,54]. Only after differentiation into the mature LTi₄ stage, these cells
8 interact and amplify the synthesis of cytokines and adhesion factors (Figure 2). This leads to the
9 attraction and retention of more LTiP and LTi cells.

10 It is unclear whether there is only one LTi₄ cell population. Mosaic CD11b and MHCII expressing LTi
11 cells were observed within the embryo [48,51,55]. Using single cell sequencing of the LN anlagen
12 enriched tissue, two separate LTi₄ clusters were observed. The first LTi₄ population expressed *Il22*, a
13 cytokine involved in gut immunity. Also, *Arg1* is expressed within this LTi₄ population, which was also
14 associated with fetal gut ILC precursors (ftILCP) and ILC2s[13]. Specifically, in the same study, the fetal
15 gut contained Arginase 1(Arg1)YFP⁺ LTi fate mapped cells and a smaller Arg1YFP⁻ population [13],
16 confirming two separate LTi₄ populations also within the intestines. The ftILCPs could generate ILC1, 2
17 and 3 and were not fate mapped by the ROR γ t-Cre reporter, indicating that they are likely analogous
18 to α LP and ILCP cells. *Arg1* transcripts were not observed within fetal liver progenitors but only in the
19 LN anlagen enriched tissue [19], indicating that *Arg1* could be expressed after leaving the FL and
20 entering peripheral LN anlagen or fetal gut. The second LTi₄ population observed in the single cell
21 sequencing study was segregated based on genes associated with Major histocompatibility complex II
22 (MHCII), and hence named LTi₄-II. Within the LTi₄-II population, *Cfp* (*Complement Factor Properdin*)
23 was observed, a ligand for binding to NKp46 [56]. This could indicate that the LTi₄ -II population
24 produce the ligand for NKp46⁺ NK, ILC1, ILC3 cells, but this has not yet been shown within the adult. A
25 relation between the two embryonic LTi populations in the LN anlagen enriched tissue and the Arg1⁺
26 or MHCII⁺ ILC3 and LTi-like cells observed in the gut remains to be established.

1
2
3
4
5
6
7
8
9
10
11
12
13
14
15
16
17
18
19
20
21
22
23
24
25
26

2.4 Origin of ILCs and LTi cells in adult

Hematopoietic lineages within the adult are almost all derived from HSC residing within the bone-marrow. Bone-marrow derived ILC precursors in the mouse do not express Arg1, while embryonic ILCs express Arg1 [13]. This is an indication that the differentiation pathway towards embryonic derived ILCs is likely different than those derived from HSCs in the adult bone-marrow. The mouse embryonic LTi cells, ILC3s and ILC2s were shown to be replaced by bone-marrow HSC derived ILCs [14,19,36]. Also, it was shown that ILCs can be generated from the bone-marrow using elegant reporter mouse models and *in vitro* differentiation [13,16–18], although only 1 study reported the generation of LTi cells from bone marrow, while the other reporter mouse models could not follow LTi cells in their fate-mapping models [41]. The discrepancy between these studies can be explained by the differentiation stage that is used as source for the *in vitro*- or *in vivo* differentiation studies. Similar as their differentiation within the mouse embryo, LTi cells follow a slightly different pathway for their formation as other ILCs, and the precursors used in the studies could have lost their LTi cell potential. In immunodeficient patients who received bone-marrow transfer lymphocytes were regained, but not ILCs [57]. This observation could reflect the inability of some studies to observe LTi cell differentiation within the adult from HSCs. Similar as for LTi cells, it is important to understand from which hematopoietic precursor exactly ILCs originate in (human) fetus. Possibly, other human HSCs or progenitors need to be isolated which still have the potential to become ILC after transfer, as was shown for circulating and tissue resident ILCp cells[58]. The presence of different types of ILC1, 2, 3 or LTi cells in different tissues could also reflect their difference in origin, i.e. embryonic resident ILCs vs. bone-marrow derived ILCs, and thus affect their functioning. More studies are required to understand the precise ILC progenitors and their differentiation pathways and what the functional difference is between the embryonic vs. adult ILCs.

3. LTi cells in embryonic lymph node formation

1 Secondary lymphoid organs, like mesenteric and peripheral lymph nodes (LN) and Peyer's patches, are
2 formed during embryogenesis in which the LTi cells are critical. Consequently, deleting or mutation of
3 *RORc* in both mice[51] and human[50] results in loss of LTi cells and concomitantly loss of LNs
4 (reviewed in [11]). *RORc* deficient humans lacked palpable LNs but still had tonsils, but are surprisingly
5 only more sensitive to *Mycobacteria* and *Candida* due to defective $\gamma\delta$ -T cells and $CD4^+CCR6^+CXCR3^-$
6 $\alpha\beta$ T cells[50]. The presence of the tonsils, and other lymphoid structures like spleen which do not rely
7 on LTi cells could be sufficient to drive the adaptive immune response. In mouse, initiation of most
8 lymph nodes occurs between E12.5 until E15.5 (Figures 2 and 3). The aggregates of LTi- and
9 mesenchymal cells, called lymph node anlagen, are present until birth in mouse. Final organization of
10 the LN due to differentiation of the stromal subsets and attraction of the specific lymphocytes to their
11 respective regions take place in the first weeks after birth. On the contrary, in human, LN
12 organogenesis takes place around the 12-17th week of pregnancy and humans are born with a fully
13 organized LN at birth [59].

14 The first event which can be visualized in embryonic LN formation is the aggregation of the LTi cells at
15 fixed positions within the embryo (Figure 2). The chemokine CXCL13 is essential for the aggregation of
16 the LTi cells in most LN anlagen, except the mesenteric LN [60,61]. $CXCR5^+$ LTiP cells are present within
17 the LN anlagen, to be retained by local CXCL13 expression within the niches where LN are
18 formed[7,19,43]. The role of CXCR6 [43,44] on these cells remains unknown in the attraction toward
19 the LN niche. Only CCR7 was shown to be very potent in attracting LTi cells, but only when lymphatic
20 endothelial cells secrete the ligand CCL21[12,52,61]. In later LN formation stages, after lymphotoxin
21 signaling and when the mesenchymal cells have differentiated into lymphoid tissue inducer (LTo) cells,
22 the other CCR7 ligand CCL19 is expressed by LTo cells within the LN anlagen. This occurs around the
23 time when the lymphatic endothelial cells have circumvented the LN anlagen. Some rescue could be
24 observed by the lymphatic endothelial cell (LEC) expressed chemokine CCL21 [61], although these are
25 likely to be aggregations within lymphatic vessels [12]. The presence of LECs and thus expression of
26 CCL21 occurred after initial LTi cell aggregation and initial CXCL13 expression within the LN anlagen

1 [12,52]. Moreover, lack of all lymphatic endothelial cells in the *Prox1* knock-out mouse model did not
2 affect the initial aggregation of the LT_i cell clusters [62]. Initial *Cxcl13* expression, but not other
3 chemokines like *Ccl21* and *Ccl19*, is induced by retinoic acid. *Cxcl13* expression is required to attract
4 the first precursor LT_i cells towards the LN anlagen niche. It was proposed that nearby neurons
5 synthesize the retinoic acid, thus inferring to a neuronal influence on LN formation[52]. However, it is
6 unclear which type of neurons are involved in LN formation. After the initial LT_i cell differentiation,
7 Receptor activator of nuclear factor κ B Ligand (RANK-L), also known as TNFSF11A, either on LT_i cells
8 [54,63] or mesenchymal cells [64] activates RANK on LT_i cells. RANK signaling induced expression of
9 Lymphotoxin- $\alpha_1\beta_2$ ligand on the LT_i cells, which is the latest maturation step of the LT_i cell. Thus loss of
10 this signaling resulted in the loss of LT_{i4} cells and consequently loss of lymph nodes [54,64].
11 Lymphotoxin- $\alpha_1\beta_2$ will subsequently interact with its LT β -receptor on the mesenchymal cells. This
12 interaction triggers the expression of cytokines like IL7, chemokines like *Cxcl13* and adhesion
13 molecules like Madcam-1 [63,65], which attract and retain more (precursor) LT_i cells. These increasing
14 interactions results in an amplification of the process and hence a strong increase in the size of the
15 aggregate.

16 There is currently a discussion on the definition of the initial phase of LN formation. It was suggested
17 that embryonic lymphatic vessels interacted with LT_i cells through lymphotoxin signaling and that this
18 delineated the initial event of LN formation[10]. Indeed, lymphatic vessels play an important role in
19 lymph node formation but notably during the expansion phase. During the earliest clustering of LT_i
20 cells, well before E14.5, lymphatic vessels were not present nor required [12,52,62]. Starting at E14.5
21 in the anterior lymph node anlagen and later in the posterior located anlagen, LECs circumvent the LN
22 anlagen and connect the lymphatic vasculature to the LN anlagen. This allows the migration of LT_i cells
23 from the skin towards the LN anlagen [12,62,66]. Notably, an elegant study by the Petrova lab showed
24 that flow from the lymphatic vasculature was important for *Cxcl13* expression within the inguinal
25 lymph node anlagen. Blocking lymphangiogenesis by administering vascular endothelial growth factor

1 receptor 3 (VEGFR3)-blocking antibodies resulted in an arrest of the small, initial, LT_i cell aggregate
2 and significant fewer LT_{i4} cells within the inguinal LN anlagen [12].
3 The first visible LN anlagen during human fetal development are found after week 12[67], although
4 the initial clustering of LT_i cells occurs most likely earlier. In the mouse, the first LT_i cell aggregate was
5 observed at E12.5, either in *hCD2^{GFP}* embryos [68] or analysis by flow-cytometry and (3D)
6 immunofluorescence of *ROR γ ^{tGFP}* embryos [19,51](Figure 3). In time, other lymph node anlagen
7 appear, notably in an anterior to posterior chronological manner, with the popliteal lymph nodes
8 appearing the latest after E14.5 [19,69]. During initiation at E12.5, the anterior situated mandibular
9 and cervical LT_i cell clusters are very closely situated near each other within the cervical region.
10 Separation of the cervical and mandibular LN anlagen occur clearly at E13.5. The brachial lymph node
11 anlagen is present after E14.5 and located near the axillary LN anlagen. In the posterior region, initially
12 at E12.5-E13.5, a large LT_i cell cluster was observed next to mesonephros. The renal, inguinal and
13 popliteal LN anlagen could be separately identified after E14.5 [19]. Since in the adult renal LNs are
14 not bigger than the inguinal LNs and LT_i aggregation in the inguinal LN anlagen dramatically increases
15 in size within a day while the number of LT_i cells within the renal LN anlagen uncharacteristically
16 plateau at the same stage [19], it could be that the large aggregation of the initial renal LN anlagen in
17 the mesonephros region could aid formation of other LN anlagen nearby by ‘donating’ LT_i cells to the
18 new niche nearby.

19

20 **4. ILC3 and LT_i-like in adult lymph nodes and gut.**

21 In the adult mouse, ROR γ ^tCCR6⁺CD4⁺ LT_{i4} cells are mainly observed in lymph nodes and in gut. Lymph
22 nodes are important for the functioning of the adaptive immune system, as they organize and
23 facilitate the interaction between antigen presenting cells and the lymphocytes. The antigens are
24 transported towards the lymph nodes by the afferent lymphatic vessels either unbound or bound to
25 antigen presenting cells. The lymphatic vessels are connected to the lymphatic subcapsular sinus
26 circumventing the lymph node. The antigen and cells are spread over the subcapsular sinus and

1 migrate into the B-cell follicles or into the T-cell areas, depending on the antigen size or type of
2 antigen presenting cell [70–72](reviewed in [73]). Each immune reaction is taking place in a specialized
3 region within the lymph node, thus compartmentalizing the immune response. These regions are
4 meticulously organized and maintained by specialized stromal cells. Initially, only T-cell zone stromal
5 cells (fibroblastic reticular cells) in the paracortex, B-cell stromal zone cells (follicular dendritic cells)
6 and endothelial cells were described (reviewed in [74]). This was later amended by the marginal
7 reticular cells (MRC), positioned in the paracortex, adjacent to the B-cell follicles and just below the
8 subcapsular sinus [75]. However, the use of single cell sequencing has allowed the identification of
9 nine stromal cell clusters within the lymph node [76], each with specific expression profiles and
10 functions (reviewed in [74]). These stromal cells differentiate from mesenchymal precursor cells, or
11 LTo cells, in the first weeks after birth in the mouse [77–79]. Although there are indications that
12 lymphotoxin signaling, retinoic acid or microbiota mediate mesenchymal differentiation [52,78,80],
13 the specific cues for differentiation towards a specific stromal cell subset are yet unclear [81].

14 Embryonic LTi cells, which are involved in embryonic LN formation, are replaced in the adult by LTi
15 cells derived from the bone-marrow [19,36]. Thus, since their origin is different, the LTi cells in adult
16 are likely to be functionally different compared to the embryonic LTi cells. Within the lymph node, LTi
17 cells were found adjacent to the MRC without an apparent function. Since the MRCs were assumed
18 being a precursor for other stromal cells during expansion of the lymph node during inflammation
19 [77], the MRC-LTi cell communication might reflect the interaction between embryonic LTi cells with
20 LTo cells occurring during embryonic lymph node formation. Besides the obvious role for LTi cells
21 during embryonic lymph node formation, there is not much known on their role in the adult. There is
22 phenotypically not much difference, although adult LTi cells endogenously express OX40 and CD30
23 ligands, involved in clonal expansion and memory of lymphocytes, while the fetal LTi cells need DR3
24 stimulation to express these ligands [82]. It was described that adult LTi cells were involved in the
25 formation of tertiary lymphoid structures during cancer [83]. They have been described in the

1 restoration of lymphoid tissues, as they were involved in spleen restoration after viral infection [84]
2 and rescue of mucosal associated lymphoid tissue (MALT) in an *Id2*-knock out model [85].
3 A very related LTI cell subset within the ILC3 branch is the LTI-like population, present in high numbers
4 within the adult gut mucosa. These cells are different than the closely related NKp46⁺CCR6⁻RORγt⁺
5 ILC3 cells, which originate from NKp46⁻CCR6⁻ progenitors driven by T-Bet which upregulates IFN-γ and
6 NKp46 expression [86,87]. LTI-like cells are characterized as NKp46⁻CCR6⁺ (CD4^{+/-}) ILC3 cells, and
7 found to be involved in antigen presentation and immune modulation and secrete IL22 [88,89]. They
8 are guided by CCR7 expression [90] and play an important role in interaction between follicular Th-
9 cells and IgA producing B-cells[91]. An embryonic LTI cell subset (LTI₄-II) expressed MHCII related
10 genes [19], and it is interesting to establish whether there is a lineage and functional relationship
11 between embryonic LTI₄-II and LTI-like cells in the adult gut.

12 There are numerous reports stating the importance of ILC3s in the immune defense. They are involved
13 in immune cells interactions to induce IgA production on B-cells [90,91]. They secrete IL17 and notably
14 IL22 secretion upon IL23R activation, shown in mice and human and in different disease settings
15 [88,92–94]. Besides their role in immune reactions, IL22 secreted by ILC3s was shown to be also
16 important for maintenance of epithelial integrity. IL22 from ILC3/LTI-like cells induced
17 the fucosyltransferase 2 (*Fut2*) expression in gut epithelial cells, which is required for fucosylation and
18 resistance to *Salmonella typhimurium* infection [95].

19 There is discussion on the possible redundancy of NKp46⁺ ILC3s in the gut-immune response. A *Ncr1*
20 (NKp46)- *Cre* model was used to delete ILC3 cells or specifically knock-out *Il22* within NKp46⁺ ILC3s
21 during gut infection. In these models, the NKp46⁺ ILC3 population was shown to be redundant during
22 an infection with *Citrobacter rodentium* and ILC3 deletion only affected cecal homeostasis [87].
23 However, *Il22* expression in the NKp46⁻CCR6⁺ LTI-like cell population was not affected in these models
24 [87] and it remains unclear whether this population could (partially) rescue the loss of IL22 from the
25 NKp46⁺ ILC3 population. Indeed, it was shown that the ILC3 are partially redundant but play an
26 essential role in T-cell deficient mice[96]. In another example of possible redundancy it was observed

1 that in patients with severe combined immunodeficiency (SCID), the restoration of the hematopoietic
2 compartment did not restore the ILC family without any obvious susceptibility to a disease [57]. Lastly,
3 in human patients with a *RORc* loss of function mutation, lacking ROR γ t functionality and thus all ILC3
4 and LTi-like cells, were only more susceptible to *Mycobacterium* and *Candida* infections. This effect
5 was attributed to defective $\gamma\delta$ - and $\alpha\beta$ - T-cells but not ILC3's [50]. Therefore, it remains unclear what
6 the unique roles of ILC3 and LTi-like cells are within the gut. Is there indeed redundancy, as was
7 proposed before [57,87], or is there a rescue mechanism which arises during fetal development and
8 neonatal stages? Better mouse models, in which specifically ILC3 and/or LTi like cells can be deleted by
9 induction at a specific time point to prevent a rescue mechanism during development, are required to
10 answer this question. Additionally, the use of a unique gene for each population, but not genes such
11 as *Ncr1* or *Rorc* as drivers, are required to establish the specific effect of a specific ILC3 cell during
12 disease.

13 Neuropilin-1 (NRP-1) was found to be expressed by ILC3 and LTi cells in mouse and human and
14 involved in the formation of ectopic lymphoid organs, especially in the lungs of smokers and COPD
15 patients [97]. Recently, Neuropilin-1 was also associated as host factor for Sars-Cov2 entry and the
16 virus was associated with NRP-1 positive cells within the nasal cavity[98,99]. If Sars-Cov2 specifically
17 transfects ILC3 and LTi cells is still unknown. It will be important to establish whether during this
18 infection LTi cells could mediate ectopic lymphoid formation in lungs, which possibly exacerbates the
19 immune reaction.

20
21 In general, ILC differentiation in embryo and adult is very flexible in order to adapt to the niche they
22 reside in. Also, ILCs can be derived from different progenitors (reviewed in [100,101]). Therefore,
23 marker expression for the ILC family members can vary and depend on their origin and differentiation
24 program. This complicates the determination of the ILC members and induces discussion on their
25 nomenclature. Especially for the characterization of enigmatic ILC1 subset this has been problematic
26 [102] and based on CyTOF analysis it was even suggested that there is no specific human ILC1

1 population [103]. Other testimonies on ILC dynamicity are that the ILC3 cells within the gut could
2 differentiate into ILC1 cells [87], fetal human intermediate-ILC1 were observed to become NK and
3 ILC3s [37] progenitors in the gut differentiate to ILC2 cells which migrate to the lung [104](reviewed in
4 [100]). Since the tissue residency and its immune status is of importance to the phenotype of the ILC,
5 it is therefore of importance to isolate different tissues to characterize the ILC in question. The use of
6 tonsil alone will skew characterization or provide a partial marker expression for human ILCs [105].
7 The origin of the ILCs, being embryonic or adult, is important to understand their eventual functioning.
8 Therefore, it remains of much interest to pinpoint the embryonic hemogenic source of the ILCs and
9 when they are replaced in the neonate by bone-marrow derived ILCs. This knowledge will aid our
10 understanding of their miscellaneous roles in immunity and how to possibly dampen them in
11 unwanted immunological reactions.

12

13 **5. Acknowledgements**

14 The group was supported by the FRM Amorçage de jeunes équipes (AJE20150633331), ANR ACHN
15 (ANR-16-ACHN-0011), ANR PRCI (ANR-17-CE13-0029-01) and institutional grants from INSERM, CNRS
16 and Aix-Marseille University to the CIML. I would like to thank Ana Cumano for the discussions on the
17 hematopoietic progenitors and Lionel Spinelli for his help on the transcriptional data. I am grateful to
18 Milesa Simic, Shuaiwei Wang and especially Rachel Golub for critically reading the manuscript.

19

20 **Legends**

21 **Figure 1; Embryonic LTi cell ontogeny.** LTi ontogeny and associated markers from the origin in the
22 hemogenic endothelium to their presence within the LN anlagen. Progenitors originate from the
23 embryonic hemogenic endothelium between E7.5-9 as observed by the use of Cxcr4 and Cdh5 lineage
24 tracing models[19]. Subsequent hematopoietic precursors reside, proliferate and differentiate within
25 the fetal liver towards the ILC lineage[7,19,43,106]. The α LP/LTiP population migrate towards the LN
26 anlagen, where these cells differentiate into LTi cells, marked by the expression of Rorc. Two clusters

1 of L_{Ti} cell populations were observed within the LN anlagen enriched tissue, mainly segregated based
2 on MHCII related genes and hence named L_{Ti4} and L_{Ti4-II} cells. Genes (in italics) and proteins
3 upregulated at a specific stage are shown below the populations, while genes enriched in the two L_{Ti4}
4 cell populations are shown to their right [7,19,43,44,106,107].

5

6 **Figure 2; Overview of embryonic lymph node formation.** Earliest phases in lymph node formation. 1)
7 Retinoic acid, possibly produced by nerve fibers, induces the expression of (2) CXCL13 by
8 mesenchymal cells in specific areas. This attracts L_{TiP} and L_{Ti} cells from the blood to form the first
9 clusters. Retinoic acid also induces expression of ROR γ t (encoded by *Rorc*) in L_{TiP} cells, which will
10 differentiate them into L_{Ti0} cells. (4) Subsequently, when the L_{Ti} aggregation is dense enough, RANK-L
11 expressed on L_{Ti} cells and mesenchymal cells interacts with RANK on the L_{Ti} cells which leads finally to
12 (5) Lymphotoxin- $\alpha_1\beta_2$ (LT $\alpha_1\beta_2$) expression on L_{Ti4} cells. (6) Interaction of LT $\alpha_1\beta_2$ -expressing L_{Ti4} cells
13 with lymphotoxin- β receptor (LT β R)-expressing stromal cells results in differentiation into stromal
14 organizer cells, which are induced to express more and different chemokines, adhesion molecules and
15 cytokines. These factors support the attraction and retention of more L_{Ti} and/or L_{TiP} cells.(7) After
16 lymphotoxin signaling, lymphatic endothelial cells migrate to the LN anlagen and circumvent it to
17 eventually form the subcapsular sinus. L_{Ti} cells from the skin are drained into the LN anlagen by newly
18 formed lymphatic vessels. The flow of the lymphatic vessel is also important for the maintenance of
19 Cxcl13 expression within the LN anlagen. The attraction, retention and migration of new L_{Ti}- and L_{TiP}
20 cells towards the LN anlagen leads to an exponential increase of the lymph node anlagen.

21

22 **Figure 3; Overview of the timing of initiation for L_{Ti} cell dependent lymphoid organs including Peyer's**
23 **patches (PP) at specific locations within the embryo.** The table is based on the earliest observation of
24 L_{Ti} cell clusters within the specific regions [19,51,68].

1 References

- 2 [1] Eberl G, Di Santo JP, Vivier E. The brave new world of innate lymphoid cells. *Nat Immunol*
3 2014;16:1–5. doi:10.1038/ni.3059.
- 4 [2] Vivier E, Artis D, Colonna M, Dieffenbach A, Di Santo JP, Eberl G, et al. Innate Lymphoid Cells: 10
5 Years On. *Cell* 2018;174:1054–66. doi:10.1016/j.cell.2018.07.017.
- 6 [3] Spits H, Artis D, Colonna M, Dieffenbach A, Di Santo JP, Eberl G, et al. Innate lymphoid cells--a
7 proposal for uniform nomenclature. *Nat Rev Immunol* 2013;13:145–9. doi:10.1038/nri3365.
- 8 [4] Nagasawa M, Germar K, Blom B, Spits H. Human CD5+ Innate Lymphoid Cells Are Functionally
9 Immature and Their Development from CD34+ Progenitor Cells Is Regulated by Id2 . *Front*
10 *Immunol* 2017;8:1047.
- 11 [5] Constantinides MG, Gudjonson H, McDonald BD, Ishizuka IE, Verhoef PA, Dinner AR, et al. PLZF
12 expression maps the early stages of ILC1 lineage development. *Proc Natl Acad Sci U S A*
13 2015;112:5123–8. doi:10.1073/pnas.1423244112.
- 14 [6] Constantinides MG, McDonald BD, Verhoef PA, Bendelac A. A committed precursor to innate
15 lymphoid cells. *Nature* 2014;508:397–401. doi:10.1038/nature13047.
- 16 [7] Ishizuka IE, Chea S, Gudjonson H, Constantinides MG, Dinner AR, Bendelac A, et al. Single-cell
17 analysis defines the divergence between the innate lymphoid cell lineage and lymphoid tissue-
18 inducer cell lineage. *Nat Immunol* 2016;17:269–76. doi:10.1038/ni.3344.
- 19 [8] Vivier E, van de Pavert SA, Cooper MD, Belz GT. The evolution of innate lymphoid cells. *Nat*
20 *Immunol* 2016;17:790–4. doi:10.1038/ni.3459.
- 21 [9] Lane PJL, Gaspal FM, McConnell FM, Withers DR, Anderson G. Lymphoid tissue inducer cells:
22 pivotal cells in the evolution of CD4 immunity and tolerance? *Front Immunol* 2012;3:24.
23 doi:10.3389/fimmu.2012.00024.
- 24 [10] Onder L, Mörbe U, Pikor N, Novkovic M, Cheng H-W, Hehlhans T, et al. Lymphatic Endothelial
25 Cells Control Initiation of Lymph Node Organogenesis. *Immunity* 2017;47:80-92.e4.
26 doi:10.1016/j.immuni.2017.05.008.

- 1 [11] van de Pavert SA, Mebius RE. New insights into the development of lymphoid tissues. *Nat Rev*
2 *Immunol* 2010;10:664–74. doi:10.1038/nri2832.
- 3 [12] Bovay E, Sabine A, Prat-Luri B, Kim S, Son K, Willrodt A-H, et al. Multiple roles of lymphatic
4 vessels in peripheral lymph node development. *J Exp Med* 2018;215:2760–77.
5 doi:10.1084/jem.20180217.
- 6 [13] Bando JK, Liang H-E, Locksley RM. Identification and distribution of developing innate lymphoid
7 cells in the fetal mouse intestine. *Nat Immunol* 2014;16:153–60. doi:10.1038/ni.3057.
- 8 [14] Schneider C, Lee J, Koga S, Ricardo-Gonzalez RR, Nussbaum JC, Smith LK, et al. Tissue-Resident
9 Group 2 Innate Lymphoid Cells Differentiate by Layered Ontogeny and In Situ Perinatal Priming.
10 *Immunity* 2019;50:1425-1438.e5. doi:10.1016/j.immuni.2019.04.019.
- 11 [15] Dege C, Fegan KH, Creamer JP, Berrien-Elliott MM, Luff SA, Kim D, et al. Potently Cytotoxic
12 Natural Killer Cells Initially Emerge from Erythro-Myeloid Progenitors during Mammalian
13 Development. *Dev Cell* 2020;53:229-239.e7. doi:10.1016/j.devcel.2020.02.016.
- 14 [16] Xu W, Cherrier DE, Chea S, Vosshenrich C, Serafini N, Petit M, et al. An Id2RFP-Reporter Mouse
15 Redefines Innate Lymphoid Cell Precursor Potentials. *Immunity* 2019;50:1054-1068.e3.
16 doi:10.1016/j.immuni.2019.02.022.
- 17 [17] Walker JA, Clark PA, Crisp A, Barlow JL, Szeto A, Ferreira ACF, et al. Polychromic Reporter Mice
18 Reveal Unappreciated Innate Lymphoid Cell Progenitor Heterogeneity and Elusive ILC3
19 Progenitors in Bone Marrow. *Immunity* 2019;51:104-118.e7.
20 doi:10.1016/j.immuni.2019.05.002.
- 21 [18] Seillet C, Mielke LA, Amann-Zalcenstein DB, Su S, Gao J, Almeida FF, et al. Deciphering the
22 Innate Lymphoid Cell Transcriptional Program. *Cell Rep* 2016;17:436–47.
23 doi:10.1016/j.celrep.2016.09.025.
- 24 [19] Simic M, Manosalva I, Spinelli L, Gentek R, Shayan RR, Siret C, et al. Distinct Waves from the
25 Hemogenic Endothelium Give Rise to Layered Lymphoid Tissue Inducer Cell Ontogeny. *Cell Rep*
26 2020;32:108004. doi:10.1016/j.celrep.2020.108004.

- 1 [20] Boisset J-C, van Cappellen W, Andrieu-Soler C, Galjart N, Dzierzak E, Robin C. In vivo imaging of
2 haematopoietic cells emerging from the mouse aortic endothelium. *Nature* 2010;464:116–20.
3 doi:10.1038/nature08764.
- 4 [21] Lancrin C, Sroczynska P, Stephenson C, Allen T, Kouskoff V, Lacaud G. The haemangioblast
5 generates haematopoietic cells through a haemogenic endothelium stage. *Nature*
6 2009;457:892–5. doi:10.1038/nature07679.
- 7 [22] Golub R, Cumano A. Embryonic hematopoiesis. *Blood Cells Mol Dis* 2013;51:226–31.
8 doi:10.1016/j.bcmd.2013.08.004.
- 9 [23] Baron CS, Kester L, Klaus A, Boisset J-C, Thambyrajah R, Yvernogeu L, et al. Single-cell
10 transcriptomics reveal the dynamic of haematopoietic stem cell production in the aorta. *Nat*
11 *Commun* 2018;9:2517. doi:10.1038/s41467-018-04893-3.
- 12 [24] Lis R, Karrasch CC, Poulos MG, Kunar B, Redmond D, Duran JGB, et al. Conversion of adult
13 endothelium to immunocompetent haematopoietic stem cells. *Nature* 2017;545:439–45.
- 14 [25] Zhu Q, Gao P, Tober J, Bennett L, Chen C, Uzun Y, et al. Developmental trajectory of pre-
15 hematopoietic stem cell formation from endothelium. *Blood* 2020.
16 doi:10.1182/blood.2020004801.
- 17 [26] McGrath KE, Frame JM, Fegan KH, Bowen JR, Conway SJ, Catherman SC, et al. Distinct Sources
18 of Hematopoietic Progenitors Emerge before HSCs and Provide Functional Blood Cells in the
19 Mammalian Embryo. *Cell Rep* 2015;11:1892–904. doi:10.1016/j.celrep.2015.05.036.
- 20 [27] Mass E, Ballesteros I, Farlik M, Halbritter F, Günther P, Crozet L, et al. Specification of tissue-
21 resident macrophages during organogenesis. *Science* 2016;353:aaf4238–aaf4238.
22 doi:10.1126/science.aaf4238.
- 23 [28] Gentek R, Ghigo C, Hoeffel G, Bulle MJ, Msallam R, Gautier G, et al. Hemogenic Endothelial
24 Fate Mapping Reveals Dual Developmental Origin of Mast Cells. *Immunity* 2018;48:1160-
25 1171.e5. doi:10.1016/j.immuni.2018.04.025.
- 26 [29] Yvernogeu L, Klaus A, Maas J, Morin-Poulard I, Weijts B, Schulte-Merker S, et al. Multispecies

- 1 RNA tomography reveals regulators of hematopoietic stem cell birth in the embryonic aorta.
2 Blood 2020;136:831–44. doi:10.1182/blood.2019004446.
- 3 [30] Yzaguirre AD, Speck NA. Insights into blood cell formation from hemogenic endothelium in
4 lesser-known anatomic sites. Dev Dyn 2016;245:1011–28. doi:10.1002/dvdy.24430.
- 5 [31] Gordon-Keylock S, Sobiesiak M, Rybtsov S, Moore K, Medvinsky A. Mouse extraembryonic
6 arterial vessels harbor precursors capable of maturing into definitive HSCs. Blood
7 2013;122:2338–45. doi:10.1182/blood-2012-12-470971.
- 8 [32] Zovein AC, Turlo KA, Ponc RM, Lynch MR, Chen KC, Hofmann JJ, et al. Vascular remodeling of
9 the vitelline artery initiates extravascular emergence of hematopoietic clusters. Blood
10 2010;116:3435–44. doi:10.1182/blood-2010-04-279497.
- 11 [33] Shigeta A, Huang V, Zuo J, Zhou B, Shigeta A, Huang V, et al. Endocardially Derived
12 Macrophages Are Essential for Valvular Remodeling Article Endocardially Derived Macrophages
13 Are Essential for Valvular Remodeling. Dev Cell 2019;48:1–14.
14 doi:10.1016/j.devcel.2019.01.021.
- 15 [34] McGrath KE, Koniski AD, Maltby KM, McGann JK, Palis J. Embryonic expression and function of
16 the chemokine SDF-1 and its receptor, CXCR4. Dev Biol 1999;213:442–56.
17 doi:10.1006/dbio.1999.9405.
- 18 [35] Werner Y, Mass E, Ashok Kumar P, Ulas T, Händler K, Horne A, et al. Cxcr4 distinguishes HSC-
19 derived monocytes from microglia and reveals monocyte immune responses to experimental
20 stroke. Nat Neurosci 2020;23:351–62. doi:10.1038/s41593-020-0585-y.
- 21 [36] Sawa S, Cherrier M, Lochner M, Satoh-Takayama N, Fehling HJ, Langa F, et al. Lineage
22 relationship analysis of ROR γ mat⁺ innate lymphoid cells. Science 2010;330:665–9.
23 doi:10.1126/science.1194597.
- 24 [37] Li N, van Unen V, Höllt T, Thompson A, van Bergen J, Pezzotti N, et al. Mass cytometry reveals
25 innate lymphoid cell differentiation pathways in the human fetal intestine. J Exp Med
26 2018;215:1383–96. doi:10.1084/jem.20171934.

- 1 [38] Elsaid R, Meunier S, Burlen-Defranoux O, Soares-da-Silva F, Perchet T, Iturri L, et al. A wave of
2 bipotent T/ILC-restricted progenitors shapes the embryonic thymus microenvironment in a
3 time-dependent manner. *Blood* 2020. doi:10.1182/blood.2020006779.
- 4 [39] Hoeffel G, Chen J, Lavin Y, Low D, Almeida FF, See P, et al. C-Myb+ Erythro-Myeloid Progenitor-
5 Derived Fetal Monocytes Give Rise to Adult Tissue-Resident Macrophages. *Immunity*
6 2015;42:665–78. doi:10.1016/j.immuni.2015.03.011.
- 7 [40] Ema H, Nakauchi H. Expansion of hematopoietic stem cells in the developing liver of a mouse
8 embryo. *Blood* 2000;95:2284–8. doi:10.1182/blood.V95.7.2284.
- 9 [41] Klose CSN, Flach M, Möhle L, Rogell L, Hoyler T, Ebert K, et al. Differentiation of type 1 ILCs
10 from a common progenitor to all helper-like innate lymphoid cell lineages. *Cell* 2014;157:340–
11 56. doi:10.1016/j.cell.2014.03.030.
- 12 [42] Boos MD, Yokota Y, Eberl G, Kee BL. Mature natural killer cell and lymphoid tissue-inducing cell
13 development requires Id2-mediated suppression of E protein activity. *J Exp Med*
14 2007;204:1119–30. doi:10.1084/jem.20061959.
- 15 [43] Chea S, Schmutz S, Berthault C, Perchet T, Petit M, Burlen-Defranoux O, et al. Single-Cell Gene
16 Expression Analyses Reveal Heterogeneous Responsiveness of Fetal Innate Lymphoid
17 Progenitors to Notch Signaling. *Cell Rep* 2016;14:1500–16. doi:10.1016/j.celrep.2016.01.015.
- 18 [44] Possot C, Schmutz S, Chea S, Boucontet L, Louise A, Cumano A, et al. Notch signaling is
19 necessary for adult, but not fetal, development of RORγt(+) innate lymphoid cells. *Nat Immunol*
20 2011;12:949–58. doi:10.1038/ni.2105.
- 21 [45] Chea S, Perchet T, Petit M, Verrier T, Guy-Grand D, Banchi E-G, et al. Notch signaling in group 3
22 innate lymphoid cells modulates their plasticity. *Sci Signal* 2016;9:ra45.
23 doi:10.1126/scisignal.aaf2223.
- 24 [46] Ishizuka IE, Constantinides MG, Gudjonson H, Bendelac A. The Innate Lymphoid Cell Precursor.
25 *Annu Rev Immunol* 2016;34:299–316. doi:10.1146/annurev-immunol-041015-055549.
- 26 [47] Cherrier M, Sawa S, Eberl G. Notch, Id2, and RORγt sequentially orchestrate the fetal

- 1 development of lymphoid tissue inducer cells. *J Exp Med* 2012;209:729–40.
2 doi:10.1084/jem.20111594.
- 3 [48] Mebius RE, Rennert P, Weissman IL. Developing lymph nodes collect CD4+CD3- LTbeta+ cells
4 that can differentiate to APC, NK cells, and follicular cells but not T or B cells. *Immunity*
5 1997;7:493–504. doi:10.1016/s1074-7613(00)80371-4.
- 6 [49] van de Pavert SA, Ferreira M, Domingues RG, Ribeiro H, Molenaar R, Moreira-Santos L, et al.
7 Maternal retinoids control type 3 innate lymphoid cells and set the offspring immunity. *Nature*
8 2014;508:123–7. doi:10.1038/nature13158.
- 9 [50] Okada S, Markle JG, Deenick EK, Mele F, Averbuch D, Lagos M, et al. Impairment of immunity
10 to *Candida* and *Mycobacterium* in humans with bi-allelic RORC mutations. *Science* (80-)
11 2015:science.aaa4282-. doi:10.1126/science.aaa4282.
- 12 [51] Eberl G, Marmon S, Sunshine M-J, Rennert PD, Choi Y, Littman DR. An essential function for the
13 nuclear receptor RORgamma(t) in the generation of fetal lymphoid tissue inducer cells. *Nat*
14 *Immunol* 2004;5:64–73. doi:10.1038/ni1022.
- 15 [52] van de Pavert SA, Olivier BJ, Goverse G, Vondenhoff MF, Greuter M, Beke P, et al. Chemokine
16 CXCL13 is essential for lymph node initiation and is induced by retinoic acid and neuronal
17 stimulation. *Nat Immunol* 2009;10:1193–9. doi:10.1038/ni.1789.
- 18 [53] Sun Z, Unutmaz D, Zou YR, Sunshine MJ, Pierani A, Brenner-Morton S, et al. Requirement for
19 RORgamma in thymocyte survival and lymphoid organ development. *Science* 2000;288:2369–
20 73. doi:10.1126/science.288.5475.2369.
- 21 [54] Kim D, Mebius RE, MacMicking JD, Jung S, Cupedo T, Castellanos Y, et al. Regulation of
22 peripheral lymph node genesis by the tumor necrosis factor family member TRANCE. *J Exp Med*
23 2000;192:1467–78. doi:10.1084/jem.192.10.1467.
- 24 [55] Mebius RE, Streeter PR, Michie S, Butcher EC, Weissman IL. A developmental switch in
25 lymphocyte homing receptor and endothelial vascular addressin expression regulates
26 lymphocyte homing and permits CD4+ CD3- cells to colonize lymph nodes. *Proc Natl Acad Sci U*

- 1 S A 1996;93:11019–24.
- 2 [56] Narni-Mancinelli E, Gauthier L, Baratin M, Guia S, Fenis A, Deghmane A-E, et al. Complement
3 factor P is a ligand for the natural killer cell-activating receptor NKp46. *Sci Immunol*
4 2017;2:eaam9628. doi:10.1126/sciimmunol.aam9628.
- 5 [57] Vély F, Barlogis V, Vallentin B, Neven B, Piperoglou C, Ebbo M, et al. Evidence of innate
6 lymphoid cell redundancy in humans. *Nat Immunol* 2016;17:1291–9. doi:10.1038/ni.3553.
- 7 [58] Lim AI, Li Y, Lopez-Lastra S, Stadhouders R, Paul F, Casrouge A, et al. Systemic Human ILC
8 Precursors Provide a Substrate for Tissue ILC Differentiation. *Cell* 2017;168:1086-1100.e10.
9 doi:10.1016/j.cell.2017.02.021.
- 10 [59] Hoorweg K, Cupedo T. Development of human lymph nodes and Peyer’s patches. *Semin*
11 *Immunol* 2008;20:164–70. doi:10.1016/j.smim.2008.02.003.
- 12 [60] Ansel KM, Ngo VN, Hyman PL, Luther SA, Förster R, Sedgwick JD, et al. A chemokine-driven
13 positive feedback loop organizes lymphoid follicles. *Nature* 2000;406:309–14.
14 doi:10.1038/35018581.
- 15 [61] Luther S a, Ansel KM, Cyster JG. Overlapping roles of CXCL13, interleukin 7 receptor alpha, and
16 CCR7 ligands in lymph node development. *J Exp Med* 2003;197:1191–8.
17 doi:10.1084/jem.20021294.
- 18 [62] Vondenhoff MF, van de Pavert SA, Dillard ME, Greuter M, Goverse G, Oliver G, et al. Lymph
19 sacs are not required for the initiation of lymph node formation. *Development* 2009;136:29–
20 34. doi:10.1242/dev.028456.
- 21 [63] Yoshida H, Naito A, Inoue J-I, Satoh M, Santee-Cooper SM, Ware CF, et al. Different Cytokines
22 Induce Surface Lymphotoxin- $\alpha\beta$ on IL-7 Receptor- α Cells that Differentially Engender Lymph
23 Nodes and Peyer’s Patches. *Immunity* 2002;17:823–33. doi:10.1016/S1074-7613(02)00479-X.
- 24 [64] Sugiyama M, Nakato G, Jinnohara T, Akiba H, Okumura K, Ohno H, et al. Expression pattern
25 changes and function of RANKL during mouse lymph node microarchitecture development. *Int*
26 *Immunol* 2012;24:369–78. doi:10.1093/intimm/dxs002.

- 1 [65] Vondenhoff MF, Greuter M, Goverse G, Elewaut D, Dewint P, Ware CF, et al. LTbetaR signaling
2 induces cytokine expression and up-regulates lymphangiogenic factors in lymph node anlagen.
3 *J Immunol* 2009;182:5439–45. doi:10.4049/jimmunol.0801165.
- 4 [66] Wang Z, Chai Q, Zhu M. Differential Roles of LTβR in Endothelial Cell Subsets for Lymph Node
5 Organogenesis and Maturation. *J Immunol* 2018;ji1701080. doi:10.4049/jimmunol.1701080.
- 6 [67] Cupedo T. Human lymph node development: An inflammatory interaction. *Immunol Lett*
7 2011;138:4–6. doi:https://doi.org/10.1016/j.imlet.2011.02.008.
- 8 [68] Veiga-Fernandes H, Coles MC, Foster KE, Patel A, Williams A, Natarajan D, et al. Tyrosine kinase
9 receptor RET is a key regulator of Peyer’s patch organogenesis. *Nature* 2007;446:547–51.
10 doi:10.1038/nature05597.
- 11 [69] Rennert PD, James D, Mackay F, Browning JL, Hochman PS. Lymph Node Genesis Is Induced by
12 Signaling through the Lymphotoxin β Receptor. *Immunity* 1998;9:71–9. doi:10.1016/S1074-
13 7613(00)80589-0.
- 14 [70] Roozendaal R, Mempel TR, Pitcher L a, Gonzalez SF, Verschoor A, Mebius RE, et al. Conduits
15 mediate transport of low-molecular-weight antigen to lymph node follicles. *Immunity*
16 2009;30:264–76. doi:10.1016/j.immuni.2008.12.014.
- 17 [71] Braun A, Worbs T, Moschovakis GL, Halle S, Hoffmann K, Bölter J, et al. Afferent lymph–derived
18 T cells and DCs use different chemokine receptor CCR7–dependent routes for entry into the
19 lymph node and intranodal migration. *Nat Immunol* 2011;12:879–87. doi:10.1038/ni.2085.
- 20 [72] Martens R, Permanyer M, Werth K, Yu K, Braun A, Halle O, et al. Efficient homing of T cells via
21 afferent lymphatics requires mechanical arrest and integrin-supported chemokine guidance.
22 *Nat Commun* 2020;11:1114. doi:10.1038/s41467-020-14921-w.
- 23 [73] Jalkanen S, Salmi M. Lymphatic endothelial cells of the lymph node. *Nat Rev Immunol* 2020.
24 doi:10.1038/s41577-020-0281-x.
- 25 [74] Gentek R, Bajénoff M. Lymph Node Stroma Dynamics and Approaches for Their Visualization.
26 *Trends Immunol* 2017;38:236–47. doi:10.1016/j.it.2017.01.005.

- 1 [75] Katakai T, Suto H, Sugai M, Gonda H, Togawa A, Suematsu S, et al. Organizer-like reticular
2 stromal cell layer common to adult secondary lymphoid organs. *J Immunol* 2008;181:6189–
3 200. doi:10.4049/jimmunol.181.9.6189.
- 4 [76] Rodda LB, Lu E, Bennett ML, Sokol CL, Wang X, Luther SA, et al. Single-Cell RNA Sequencing of
5 Lymph Node Stromal Cells Reveals Niche-Associated Heterogeneity. *Immunity* 2018:1–15.
6 doi:10.1016/j.immuni.2018.04.006.
- 7 [77] Jarjour M, Jorquera A, Mondor I, Wienert S, Narang P, Coles MC, et al. Fate mapping reveals
8 origin and dynamics of lymph node follicular dendritic cells. *J Exp Med* 2014;211:1109–22.
9 doi:10.1084/jem.20132409.
- 10 [78] Koning JJ, Rajaraman A, Reijmers RM, Konijn T, Pan J, Ware CF, et al. Development of follicular
11 dendritic cells in lymph nodes depends on retinoic acid mediated signaling. *BioRxiv*
12 2020:2020.05.20.106385. doi:10.1101/2020.05.20.106385.
- 13 [79] Denton AE, Carr EJ, Magiera LP, Watts AJB, Fearon DT. Embryonic FAP + lymphoid tissue
14 organizer cells generate the reticular network of adult lymph nodes. *J Exp Med*
15 2019;jem.20181705. doi:10.1084/jem.20181705.
- 16 [80] Pezoldt J, Pasztoi M, Zou M, Wiechers C, Beckstette M, Thierry GR, et al. Neonatally imprinted
17 stromal cell subsets induce tolerogenic dendritic cells in mesenteric lymph nodes. *Nat Commun*
18 2018;9:3903. doi:10.1038/s41467-018-06423-7.
- 19 [81] Cupedo T, Mebius RE. Cellular interactions in lymph node development. *J Immunol*
20 2005;174:21–5. doi:10.4049/jimmunol.174.1.21.
- 21 [82] Kim M, Toellner K, White A, McConnell FM, Gaspal FMC, Parnell SM, et al. Neonatal and adult
22 CD4+ CD3- cells share similar gene expression profile, and neonatal cells up-regulate OX40
23 ligand in response to TL1A (TNFSF15). *J Immunol* 2006;177:3074–81.
24 doi:10.4049/jimmunol.177.5.3074.
- 25 [83] Shields JD, Kourtis IC, Tomei A a, Roberts JM, Swartz MA. Induction of lymphoidlike stroma and
26 immune escape by tumors that express the chemokine CCL21. *Science (80-)* 2010;328:749–52.

- 1 doi:10.1126/science.1185837.
- 2 [84] Scandella E, Bolinger B, Lattmann E, Miller S, Favre S, Littman DR, et al. Restoration of lymphoid
3 organ integrity through the interaction of lymphoid tissue-inducer cells with stroma of the T
4 cell zone. *Nat Immunol* 2008;9:667–75. doi:10.1038/ni.1605.
- 5 [85] Fukuyama S, Hiroi T, Yokota Y, Rennert PD, Yanagita M, Kinoshita N, et al. Initiation of NALT
6 Organogenesis Is Independent of the IL-7R, LT β R, and NIK Signaling Pathways but Requires the
7 Id2 Gene and CD3–CD4+CD45+ Cells. *Immunity* 2002;17:31–40. doi:10.1016/S1074-
8 7613(02)00339-4.
- 9 [86] Klose CSN, Kiss EA, Schwierzeck V, Ebert K, Hoyler T, D’Hargues Y, et al. A T-bet gradient
10 controls the fate and function of CCR6-ROR γ t+ innate lymphoid cells. *Nature* 2013;494:261–5.
11 doi:10.1038/nature11813.
- 12 [87] Rankin LC, Girard-Madoux MJH, Seillet C, Mielke LA, Kerdiles Y, Fenis A, et al. Complementarity
13 and redundancy of IL-22-producing innate lymphoid cells. *Nat Immunol* 2015;17:179–86.
14 doi:10.1038/ni.3332.
- 15 [88] Chen L, He Z, Slinger E, Bongers G, Lapenda TL, Pacer ME, et al. IL-23 activates innate lymphoid
16 cells to promote neonatal intestinal pathology. *Mucosal Immunol* 2015;8:390–402.
17 doi:10.1038/mi.2014.77.
- 18 [89] Marchesi F, Martin AP, Thirunarayanan N, Devany E, Mayer L, Grisotto MG, et al. CXCL13
19 expression in the gut promotes accumulation of IL-22-producing lymphoid tissue-inducer cells,
20 and formation of isolated lymphoid follicles. *Mucosal Immunol* 2009;2:486–94.
21 doi:10.1038/mi.2009.113.
- 22 [90] Mackley EC, Houston S, Marriott CL, Halford EE, Lucas B, Cerovic V, et al. CCR7-dependent
23 trafficking of ROR γ + ILCs creates a unique microenvironment within mucosal draining lymph
24 nodes. *Nat Commun* 2015;6:5862. doi:10.1038/ncomms6862.
- 25 [91] Melo-Gonzalez F, Kammoun H, Evren E, Dutton EE, Papadopoulou M, Bradford BM, et al.
26 Antigen-presenting ILC3 regulate T cell–dependent IgA responses to colonic mucosal bacteria. *J*

- 1 Exp Med 2019;jem.20180871. doi:10.1084/jem.20180871.
- 2 [92] Lee JS, Cella M, McDonald KG, Garlanda C, Kennedy GD, Nukaya M, et al. AHR drives the
3 development of gut ILC22 cells and postnatal lymphoid tissues via pathways dependent on and
4 independent of Notch. Nat Immunol 2012;13:144–51. doi:10.1038/ni.2187.
- 5 [93] Ciccia F, Guggino G, Rizzo A, Saieva L, Peralta S, Giardina A, et al. Type 3 innate lymphoid cells
6 producing IL-17 and IL-22 are expanded in the gut, in the peripheral blood, synovial fluid and
7 bone marrow of patients with ankylosing spondylitis. Ann Rheum Dis 2015;74:1739 LP – 1747.
8 doi:10.1136/annrheumdis-2014-206323.
- 9 [94] Bernink JH, Krabbendam L, Germar K, de Jong E, Gronke K, Kofoed-Nielsen M, et al. Interleukin-
10 12 and -23 Control Plasticity of CD127+ Group 1 and Group 3 Innate Lymphoid Cells in the
11 Intestinal Lamina Propria. Immunity 2015;43:146–60. doi:10.1016/j.immuni.2015.06.019.
- 12 [95] Goto Y, Obata T, Kunisawa J, Sato S, Ivanov II, Lamichhane A, et al. Innate lymphoid cells
13 regulate intestinal epithelial cell glycosylation. Science (80-) 2014;345:1254009–1254009.
14 doi:10.1126/science.1254009.
- 15 [96] Song C, Lee JS, Gilfillan S, Robinette ML, Newberry RD, Stappenbeck TS, et al. Unique and
16 redundant functions of NKp46+ ILC3s in models of intestinal inflammation. J Exp Med 2015.
17 doi:10.1084/jem.20151403.
- 18 [97] Shikhagaie MM, Björklund ÅK, Mjösberg J, Erjefält JS, Cornelissen AS, Ros XR, et al. Neuropilin-1
19 Is Expressed on Lymphoid Tissue Residing LTi-like Group 3 Innate Lymphoid Cells and
20 Associated with Ectopic Lymphoid Aggregates. Cell Rep 2017;18:1761–73.
21 doi:10.1016/j.celrep.2017.01.063.
- 22 [98] Cantuti-Castelvetri L, Ojha R, Pedro LD, Djannatian M, Franz J, Kuivanen S, et al. Neuropilin-1
23 facilitates SARS-CoV-2 cell entry and infectivity. Science (80-) 2020;370:856 LP – 860.
24 doi:10.1126/science.abd2985.
- 25 [99] Daly JL, Simonetti B, Klein K, Chen K-E, Williamson MK, Antón-Plágaro C, et al. Neuropilin-1 is a
26 host factor for SARS-CoV-2 infection. Science (80-) 2020;370:861 LP – 865.

- 1 doi:10.1126/science.abd3072.
- 2 [100] Bal SM, Golebski K, Spits H. Plasticity of innate lymphoid cell subsets. *Nat Rev Immunol* 2020.
- 3 doi:10.1038/s41577-020-0282-9.
- 4 [101] Gronke K, Kofoed-Nielsen M, Diefenbach A. Innate lymphoid cells, precursors and plasticity.
- 5 *Immunol Lett* 2016. doi:10.1016/j.imlet.2016.07.004.
- 6 [102] Björklund AK, Forkel M, Picelli S, Konya V, Theorell J, Friberg D, et al. The heterogeneity of
- 7 human CD127+ innate lymphoid cells revealed by single-cell RNA sequencing. *Nat Immunol*
- 8 2016;17:451–60. doi:10.1038/ni.3368.
- 9 [103] Simoni Y, Fehlings M, Kløverpris HN, McGovern N, Koo S-L, Loh CY, et al. Human Innate
- 10 Lymphoid Cell Subsets Possess Tissue-Type Based Heterogeneity in Phenotype and Frequency.
- 11 *Immunity* 2017;46:148–61. doi:10.1016/j.immuni.2016.11.005.
- 12 [104] Huang Y, Mao K, Chen X, Sun M, Kawabe T, Li W, et al. S1P-dependent interorgan trafficking of
- 13 group 2 innate lymphoid cells supports host defense. *Science (80-)* 2018;359:114–9.
- 14 doi:10.1126/science.aam5809.
- 15 [105] Bar-Ephraim YE, Cornelissen F, Papazian N, Konijn T, Hoogenboezem RM, Sanders MA, et al.
- 16 Cross-Tissue Transcriptomic Analysis of Human Secondary Lymphoid Organ-Residing ILC3s
- 17 Reveals a Quiescent State in the Absence of Inflammation. *Cell Rep* 2017;21:823–33.
- 18 doi:10.1016/j.celrep.2017.09.070.
- 19 [106] Berthault C, Ramond C, Burlen-Defranoux O, Soubigou G, Chea S, Golub R, et al. Asynchronous
- 20 lineage priming determines commitment to T cell and B cell lineages in fetal liver. *Nat Immunol*
- 21 2017;18:1139–49. doi:10.1038/ni.3820.
- 22 [107] Bennion BG, Croft CA, Ai TL, Qian W, Menos AM, Miner CA, et al. STING Gain-of-Function
- 23 Disrupts Lymph Node Organogenesis and Innate Lymphoid Cell Development in Mice. *Cell Rep*
- 24 2020;31:107771. doi:10.1016/j.celrep.2020.107771.
- 25



Embryonic
Hemogenic Endothelium
E7.5 - E9.0



Fetal Liver
E11.5 - E16.5



Lymph Node anlagen
E12.5 - birth



Cxcr4
Cdh5
CD45



proliferation

IL7Ra
cKit
Flt3 (Flt3)
Tox
Pclaf
Camp



proliferation

$\alpha\beta 7$
Id2
Tmem108
Zbtb16 (Plzf)
Flt3⁺ (Flt3⁺)



proliferation

Tcf7
Cxcr5
Cxcr6
Rarg



Il22 (IL22)
Il17a (IL17a)
Il23r (IL23R)
Cxcr6 (CXCR6)
Tnfrsf13b
Tnfrsf25 (DR3)
Rorc (RORγt)



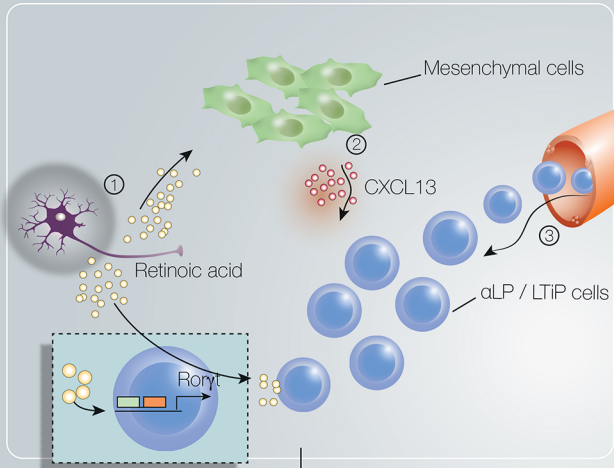
Il22
Ecm1
Klrtd1
Arg1



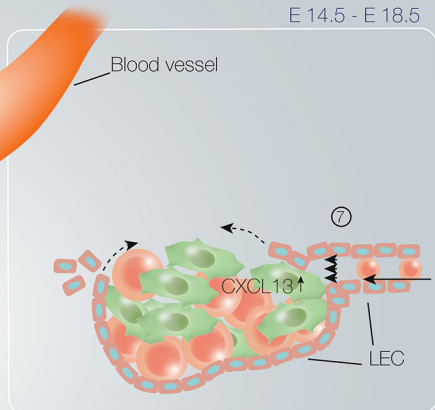
H2-Aa
H2-Eb1
H2-Ab1
Cd74
Bcl2a1b
Cfp
Siglecg
Cd83

Cd4 (CD4)
RANKL
RANK
Ccr6 (CCR6)
Tmem176a
Tmem176b
Lta (LTα)
Ltb (LTβ)
Batf
Il23r
CD7

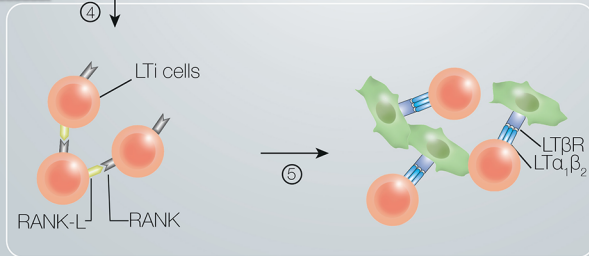
E 12.5 - E 13.5



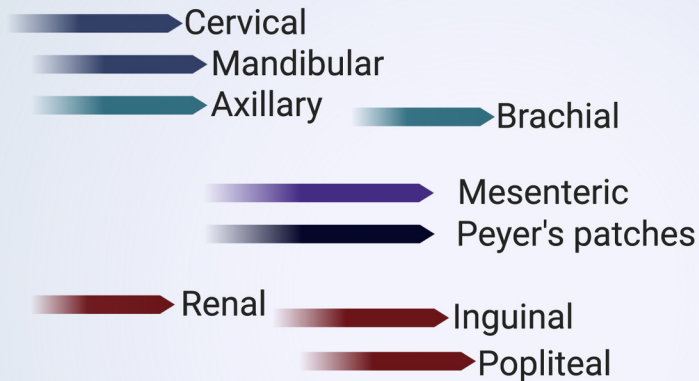
E 14.5 - E 18.5



E 13.5 - E 14.5



- ⑥
- \uparrow Adhesion molecules
 - \uparrow Chemokines
 - \uparrow Cytokines



E12.5

E14.5

E16.5

birth

Embryonic stage