



HAL
open science

Systematics of European coastal anchovies (genus *Engraulis* Cuvier)

François Bonhomme, Laura Meyer, Christine Arbiol, Daniela Bănanu, Lilia Bahri-sfar, Karima Fadhlaoui-zid, Petr Strelkov, Marco Arculeo, Laurent Soulier, Jean-pierre Quignard, et al.

► **To cite this version:**

François Bonhomme, Laura Meyer, Christine Arbiol, Daniela Bănanu, Lilia Bahri-sfar, et al.. Systematics of European coastal anchovies (genus *Engraulis* Cuvier). *Journal of Fish Biology*, 2021, 100 (2), pp.594-600. <10.1111/jfb.14964>. <hal-03589330>

HAL Id: hal-03589330

<https://amu.hal.science/hal-03589330v1>

Submitted on 25 Feb 2022

HAL is a multi-disciplinary open access archive for the deposit and dissemination of scientific research documents, whether they are published or not. The documents may come from teaching and research institutions in France or abroad, or from public or private research centers.

L'archive ouverte pluridisciplinaire **HAL**, est destinée au dépôt et à la diffusion de documents scientifiques de niveau recherche, publiés ou non, émanant des établissements d'enseignement et de recherche français ou étrangers, des laboratoires publics ou privés.



HAL Authorization

1 Systematics of European coastal anchovies (genus *Engraulis* Cuvier)

2 François Bonhomme¹, Laura Meyer^{1,*}, Christine Arbiol¹, Daniela Bănar², Lilia Bahri-Sfar³, Karima
3 Fadhlou-Zid⁴, Petr Strelkov⁵, Marco Arculeo⁶, Laurent Soulier⁷, Jean-Pierre Quignard⁸, Pierre-
4 Alexandre Gagnaire¹

5

6 * corresponding author

7 1- Institut des Sciences de l'Evolution (UMR 5554), CNRS-UM2-IRD, Place Eugène Bataillon,
8 Montpellier, F-34095, France

9 2- Aix-Marseille Université, Université de Toulon, CNRS, IRD, MIO UM 110, Mediterranean Institute of
10 Oceanography, Marseille, France

11 3- Biodiversité, Parasitologie et Ecologie des Écosystèmes Aquatiques, LR18ES05, 2092, Faculté des
12 Sciences de Tunis, Université de Tunis El Manar, Tunis, Tunisia

13 4- Institut National des Sciences et Technologie de la Mer, INSTM, Port de pêche, 2060 La Goulette,
14 Tunisia

15 5- Department of Ichthyology & Hydrobiology, St. Petersburg State University, St. Petersburg, Russia

16 6- Department STEBICEF, University of Palermo, Via Archirafi 18 – 90123, Palermo, Italy

17 7- Centre pour l'Aquaculture, la Pêche et l'Environnement en Nouvelle-Aquitaine, Bayonne, France

18 8- Académie des Sciences et Lettres de Montpellier, Montpellier, France

19

20 This work was financed through the basal annual funding of ISEM

21 ABSTRACT

22 Reports of morphological differences between European anchovy (*Engraulis cf. encrasicolus*) from
23 coastal and marine habitats have long existed in the ichthyologic literature, and have given rise to a
24 long-standing debate on their taxonomic status. More recently, molecular studies have confirmed
25 the existence of genetic differentiation between the two anchovy ecotypes. Using ancestry-
26 informative markers, we show that coastal anchovies throughout the Mediterranean share a
27 common ancestry, and that substantial genetic differentiation persists in different pairs of
28 coastal/marine populations despite the presence of limited gene flow. On the basis of genetic and
29 ecological arguments, we propose that coastal anchovies deserve a species status of their own (*E.*
30 *maeoticus*) and argue that a unified taxonomical framework is critical for future research and
31 management.

32

33 KEYWORDS

34 Anchovy, ecotypes, genetic divergence, partial reproductive barrier, ancestry-informative markers,
35 taxonomy

36

37 MAIN TEXT

38 The European anchovy (commonly referred to as *Engraulis encrasicolus* L. – Clupeiform, Engraulidae)
39 is a small pelagic fish with a large geographic distribution, spanning the north-eastern Atlantic and
40 Mediterranean regions from the Baltic to the Black Sea. It is now recognised that this polytypic taxon
41 consists of several genetically differentiated populations with contrasting abilities to occupy and
42 forage in coastal environments (Borsa 2002, Oueslati et al. 2014, Le Moan et al. 2016, Montes et al.
43 2016, Catanese et al. 2017, Catanese et al. 2020, Huret et al. 2020). Some populations thrive
44 preferentially in shallow coastal lagoons with highly variable salinity, while others are predominantly
45 pelagic, with nevertheless a large overlap in their respective habitats (Le Moan et al. 2016, Catanese
46 et al. 2017, Zuev 2019, Catanese et al. 2020, Huret et al. 2020). In the abundant literature on this
47 species, the former are sometimes referred to as coastal, lagoonal or inshore populations, while the
48 adjectives marine, pelagic or offshore are used for the latter. For the sake of simplicity, we will
49 hereafter use the terms “coastal” vs. “marine” and relate these forms to morphology-based
50 descriptions from the ichthyological literature. While the question of their taxonomical status as local
51 races, subspecies or species has been pending for over a century (reviewed below), it is now well
52 established by genetic evidence (Borsa 2002, Oueslati et al. 2014, Le Moan et al. 2016) that the
53 coastal form constitutes one (or several) separate evolutionarily significant units (ESU) having
54 received several specific Latin binomens in the past. In the present paper, we address the question of
55 the possible unicity of the coastal form and its taxonomic consequences. We argue that coastal
56 anchovy populations, despite being genetically differentiated from each other, share a common
57 genetic ancestry can be genetically recognised throughout their range as a single ESU. We further
58 show that despite ample opportunities for gene flow, the coastal form remains genetically distinct
59 from the marine form, implying the existence of (partial) reproductive isolation barriers that justify
60 taxonomical recognition.

61 Early works on the Atlantic / Mediterranean / Black Sea anchovies went in parallel with very few
62 cross-comparisons. Since the very beginning, it has been suggested that ecological differences

63 between anchovy morphs could point to the existence of separate entities, sometimes referred to as
64 "races" (Grassi 1903, Zernov 1904, Zernov 1913, Maximov 1913). However, the nature of the
65 underlying differences, either being inherited or reflecting plastic growth trajectories in contrasted
66 environments, remained controversial (Grassi 1903, Lo Giudice 1911a, Lo Giudice 1911b) or were
67 dismissed (Fage 1911, Tichy 1914). A clear report of this ecological differentiation dates back to a
68 hundred years with Lo Giudice (1922), who was the first to use the terms of "coastal" and "pelagic"
69 races for anchovy populations occurring in close proximity off the Italian coasts. Shortly thereafter,
70 related work by Pusanov (1923) and Alexandrov (1925) differentiated the anchovies of the Azov Sea
71 from those of the open waters of the Black Sea, and a subspecific status was proposed for the Azov
72 Sea anchovies by Pusanov & Tseeb (1926) and Alexandrov (1927). Two decades later, in a study of
73 anchovies from the Ionian Sea and Lake Ganzirri, Sicily, Dulzetto (1947) proposed a specific status for
74 the latter population. Subsequent morphological studies confirmed the existence of ecophenotypic
75 differentiation between coastal and marine anchovies in several other locations across the
76 Mediterranean (see for instance Quignard et al. 1973), while there was still debate as to their
77 eventual taxonomic status.

78 Before the advent of genetic studies, several questions relative to the evolutionary origin and status
79 of anchovy forms remained unanswered:

80 -1) Is phenotypic differentiation between coastal and marine anchovies a purely plastic response to
81 living in different environmental conditions, or does it have a heritable genetic basis? In other words,
82 are the coastal and marine forms freely interbreeding or are they partially or entirely reproductively
83 isolated?

84 -2) In the latter case, are the various geographical populations of the coastal form closely related to
85 one another (and likewise for the marine form), or do they constitute independent entities in each
86 marine basin?

87 -3) What is the phylogeographic history behind this situation?

88 -4) Finally, what should their taxonomical status be?

89 These questions have now been partly solved by molecular population genetic studies, although the
90 subject has been animated by intense debate. From the late 70s onwards, many studies had targeted
91 a number of exploited fish species, including anchovies. Multiple papers reported either
92 electrophoretic, mitochondrial, microsatellite or single nuclear polymorphism (SNP) variation
93 patterns in anchovies at various geographical scales. However, most studies, surprisingly, seem to
94 have stemmed from a *tabula rasa* with regards to the old morphological literature. It is further
95 interesting to note that the first reports on mitochondrial DNA already evidenced two deeply
96 divergent anchovy lineages. These two mitotypes were found to coexist in the same sampling
97 locations, albeit in variable proportions, and therefore were not interpreted as reflecting the
98 existence of two parapatric or quasi-sympatric entities (e.g. Bembo et al. 1995, Magoulas et al. 1996,
99 Grant 2006, Silva et al. 2014, Vodyasova & Abramson 2017). Nevertheless, on the basis of a coupled
100 morphometric and allozymic analysis, Bembo et al. (1996) concluded that there were necessarily two
101 "stocks" among the Adriatic anchovies, primarily separated according to water depth. Hence, the
102 question of the existence of two ecotypic forms has largely been overlooked, even in relatively
103 recent studies (e.g. Borell et al. 2012, Zarraonaindia et al. 2012, Viñas et al. 2014, Silva et al. 2014).
104 Most of these studies pointed toward the existence of a relatively strong genetic structure as
105 compared to other highly dispersing broadcast spawners like sardines (e.g. Grant et al. 1998). This

106 observation was not easy to account for without invoking unrealistic limitation on individual
107 movement or strong environmentally induced selection occurring at each generation (see for
108 instance Ruggeri et al. 2016 for the Adriatic).

109 By reanalysing published allozymic data, Borsa (2002) proposed that Mediterranean anchovies
110 present a species complex with at least two forms, one of them corresponding to a coastal form that
111 was later proposed to deserve a species rank on its own (*Engraulis albidus*, Borsa et al. 2004). After
112 these first genetic clues, several studies have addressed the extent and evolutionary origin of
113 divergence between anchovy forms with molecular markers (Bouchenak-Khelladi et al. 2008,
114 Karahan et al. 2014, Oueslati et al. 2014, Le Moan et al. 2016, Montes et al. 2016, Catanese et al.
115 2017). These studies showed that coastal anchovies could be genetically characterised in areas as
116 distant as the Bay of Biscay, Alboran Sea and the near Atlantic, Gulf of Lions, Siculo-Tunisian Strait,
117 Tyrrhenian Sea, Adriatic Sea, and Levantine Basin, and that these were genetically more similar to
118 each other than to geographically closer marine anchovies. As for anchovies in the Black and Azov
119 seas and the related literature in Russian, see the review of Zuev (2019) that deals with all points
120 above but point 2.

121 For the Atlantic and Mediterranean, Le Moan et al. (2016) more specifically addressed the question
122 of the unique *versus* repeated evolutionary origin of the marine - coastal ecotype pairs. This genome-
123 wide investigation revealed that coastal populations from the Bay of Biscay and the Gulf of Lions
124 share a common ancestry that distinguishes them from the marine populations. The current
125 existence of multiple ecotype pairs was thus not attributed to independent, *in situ* differentiation in
126 response to parallel divergent selection, but to a secondary contact that probably took place about
127 300 kyrs ago between two pre-existing evolutionary lineages followed by their spatial redistribution.
128 Since both ecotypes are highly mobile and often hybridise, historical gene flow following secondary
129 contact has been sufficient to partially erode the genetic differences that existed between the two
130 anciently diverged lineages. Some regions of the genome, such as those involved in eco-phenotypic
131 differentiation, have however retained their divergence as a result of selection against unfit hybrid
132 combinations and ecological selection. The use of ancestry-informative markers located in those
133 genome regions that resist gene flow is thus crucial to be able to characterise the spatial and
134 ecological structure of the present European anchovy populations, possibly explaining why the
135 genetic distinction between marine and coastal anchovies was not evident in all molecular studies.

136 Now that the existence of two ecotypes has been widely recognised by several molecular studies, the
137 way is paved for further investigations on the genetic bases of their physiological, behavioural and
138 reproductive characteristics. Anchovies, being polytypic, have been able to occupy a wider range of
139 habitats compared to a monotypic species (Zuev 2019, Catanese et al. 2020, Huret et al. 2020). As a
140 first step, which is the very aim of this short paper, it remains however to adopt a common
141 vocabulary and to clarify the present-day taxonomical situation. To this end, we produced genome-
142 wide polymorphism data using a similar methodology as in Le Moan et al. (2016) and complemented
143 their sampling design with more individuals throughout the Mediterranean and Black seas. Since
144 reduced-representation genome sequencing generates large numbers of SNPs, we considered that a
145 limited number of individuals per location was sufficient to adequately represent the genomic
146 variability of any given location. Given the precise objectives of the current study, our analysis was
147 limited to taxonomic assignment based on genotypic combinations at ancestry-informative markers.

148 To briefly summarize the methodology, individual genomic DNA of 30 samples collected from various
149 sampling expeditions and local fisheries were used to generate RAD-sequencing libraries following a
150 similar protocol to Baird et al. (2008). Sequencing was performed on an Illumina HiSeq2500
151 sequencer in single-read mode. Demultiplexed reads were matched to the same catalogue of loci as
152 in Le Moan et al. (2016), after applying the same quality filters. We then merged the genotypes of
153 the 30 newly sequenced individuals with those of 28 individuals from Le Moan et al. (2016), which
154 were used as reference samples. Our final dataset was composed of 58 individuals representing five
155 pairs of coastal/marine anchovy populations from the north-eastern Atlantic, the western
156 Mediterranean, and the Black Sea (Fig. 1A; Supplementary Table S1). The filtered VCF file contained
157 2952 polymorphic loci genotyped in 58 individuals with a maximum rate of 30% of missing data and a
158 minimum allelic frequency (MAF) of 4%. Genetic structure was visualised by Principal Component
159 Analysis (PCA), performed using the R package SNPRelate (Zheng et al. 2012). A dendrogram based
160 on an uncorrected nucleotidic similarity (identity by state IBS) matrix was constructed using the same
161 software. Individual assignment to K ancestral populations were inferred with FastSTRUCTURE (Raj et
162 al. 2014).

163 The genomic differentiation of the 58 individuals depicted in the first two PC axes (Fig. 1B) and the
164 FastSTRUCTURE diagram (Fig. 1E) mainly distinguishes two groups of samples. PC 1 (7.56 % of total
165 variance) clearly separates the individuals sampled in coastal waters on the right side from those
166 sampled in marine conditions on the left (Fig. 1B). The second component (3.38 % of total variance)
167 separates coastal individuals from the Gulf of Biscay from their western Mediterranean (Tunisia,
168 Sicily, Gulf of Lions) and Black Sea (Kerch Strait) counterparts. This differentiation along PC 2
169 indicates that the Atlantic and Mediterranean coastal anchovies underwent significant
170 differentiation, while their marine counterparts are less differentiated from each other (see also
171 discussion in Catanese et al. 2017). Noticeably, some individuals appear in intermediate positions
172 along PC 1, consistent with the identification of early-generation hybrids (e.g. F1, F2 and backcrosses)
173 in Le Moan et al. (2016), as well as later-generation backcrosses between marine and coastal
174 anchovies both in the Atlantic and Mediterranean. Such hybrids were also evidenced from anchovy
175 eggs along the Thyrrenian coast (Catanese et al. 2020). Here we observe a similar pattern for some
176 individuals from Crimea (Kerch Strait) which could potentially represent hybrids or admixed
177 genotypes (Fig. 1B and 1E). The FastSTRUCTURE analysis also strongly captured the coastal/marine
178 dichotomy at $K=2$ (Fig. 1E) without any significant changes for higher values of K . Individuals with
179 mixed ancestry could correspond to different classes of hybrids as discussed above, an observation
180 also reflected by their intermediate position in a dendrogram based on IBS distances (sup. Figure
181 S2.).

182 The present analysis allowed to relate various geographical populations of coastal anchovy to each
183 other through the identification of common genetic bases that distinguish them from their marine
184 counterparts. Le Moan et al. (2016) showed that genetic divergence between coastal and marine
185 ecotypes was restricted to about 20-25% of the genome. These genomic regions contain ancestry-
186 informative markers that are useful for ecotype assignment and for identifying hybrid genotypes.
187 Although hybrids are relatively common, heterogeneous genome divergence between ecotypes
188 indicates that the barrier to gene flow is sufficiently strong for the two ecotypes to persist in a
189 parapatric/quasi-sympatric (although not entirely syntopic) situation without a complete re-mixing of
190 their genomes. This contrasts with the relative genetic homogeneity amongst populations of the
191 same ecotype throughout their geographical range. Hence, it can be considered that marine and

192 coastal anchovies fulfil the conditions to be treated as separate species. In line with one of the most
193 fundamental components of the biological species concept, the two anchovy forms are maintained
194 as distinct genotypic clusters despite their spatial overlap (Mallet 2020). This situation thus calls for a
195 re-examination of the taxonomic status of anchovy ecotypes. According to the rule of anteriority, we
196 discuss in what follows the correct naming of each ecotype.

197 Concerning the marine or offshore ecotype, we shall follow Borsa et al. (2004) who state: "*No type is*
198 *known for this species and Linnaeus' original description is too vague to allow the distinction between*
199 *the two species.../... . For the sake of stability, we propose to arbitrarily maintain the specific name*
200 *encrasicolus to the apparently most common and widespread anchovy species in the seas of Europe.*
201 *.../...also referred to as "oceanic" or "open-sea" anchovy".* This fish is often referred to as "blue
202 anchovy" or "green anchovy", depending on location. The genetic homogeneity of marine anchovies
203 has now been confirmed throughout a large part of its range, and hence the numerous subspecific
204 trinomens that were given to local populations should be considered invalid. It should also be noted
205 that, despite being described as marine/offshore/oceanic/pelagic, individual identification by
206 multilocus genotyping has shown that these fish are able to enter continental systems such as
207 estuaries (see for instance the individuals of the marine taxon identified in the Adour estuary, Gulf of
208 Biscay, in Le Moan et al. 2016). Borsa et al. (2004) have deposited a neotype and voucher specimens
209 for this species at the Musée National d'Histoire Naturelle (MNHN), Paris (neotype MNHN 2002-
210 1775; vouchers MNHN 2002-1776 to MNHN 2002-1844).

211 As for the coastal ecotype, which is the focus of the present study, our results point to the genetic
212 homogeneity of this taxon throughout most of its range, although subtle genetic differentiation may
213 exist among coastal populations due to limited genetic connectivity between them (Oueslati et al.
214 2014, Le Moan et al. 2016, Catanese et al. 2017). Coastal anchovies also display common
215 morphological features that separate them from marine anchovies (Fig. 1C and 1D). Generally, this
216 includes paler dorsal colouration (they are often locally referred to as "white", "yellow" "grey" or
217 "silver anchovy" in different regional languages), smaller size at maturity, fewer vertebrae, a dorsal
218 fin implanted closer to the tail and a proportionally bigger eye. For more details, see the
219 morphological descriptions in Borsa et al. (2004), Quignard et al. (1973), Tortonese (1967), Karahan
220 (2014) as well as earlier works. A conspicuous difference in otoliths shape has also been reported and
221 used to identify putative "stocks" (Messaoud et al. 2012, Vodyasova & Soldatov, 2017).

222 Until now, there have been, to our knowledge, three attempts at providing a morphological diagnosis
223 and attributing a Latin binomen or trinomen to coastal anchovy populations. These are *E. e.*
224 *maeoticus* (Pusanov & Tzeeb 1926 – with a diagnosis in Latin, sup. Figure S3) from the Sea of Azov, *E.*
225 *russoi* (Dulzetto 1947) from Sicilian lagoons, and lastly *E. albidus* (Borsa et al. 2004 – with diagnostic
226 features in English) from the Gulf of Lions. A mention should also be made for *E. e. symaetensis*
227 (Dulzetto 1940) which was collected from the "beach" nearby a small estuary near Catania (Sicily).
228 Interestingly, the morphological analysis performed by this last author indicates morphometric
229 characteristics that are apparently intermediate to those of *E. russoi* and those of the marine Ionian
230 Sea *E. encrasicolus* (data reanalysed in Tortonese 1967, who dismissed *symaetensis* as a valid name).
231 Since these samples have disappeared, it will not be possible to confirm whether they were *bona fide*
232 coastal anchovies that were locally introgressed, or a mixed stock containing hybrids.

233 Given the nomenclatorial rule of antecedence, the only valid name for the coastal species is *E.*
234 *maeoticus* (Pusanov & Tzeeb 1926) which applies to all coastal populations that have been found to

235 share a common ancestry. Pusanov & Tzeeb (1926) published a comparative diagnosis for what they
236 considered to be a subspecies and named it after the antique Meotian people that used to inhabit
237 the banks of the Azov Sea. Since, to our knowledge, no type specimens were deposited by Pusanov
238 nor Dulzetto, those secured by Borsa et al. (2004) at MNHN (type registered as MNHN 2002-1716,
239 paratypes MNHN 2002-1717 to MNHN 2002-1774) under the name *E. albidus* should be considered
240 as valid type specimens of *E. maeoticus*.

241 We believe that placing the biological diversity observed for anchovies within a clear and unified
242 taxonomical framework will greatly benefit future research across a variety of disciplines. Although
243 various recent studies have recognised the shared molecular bases associated with the two eco-
244 phenotypically divergent forms, a harmonised nomenclature is critically lacking. We propose that it is
245 time to take this step in order to make better sense of the future generation of whole-genome
246 sequence data on anchovies. This will aid characterisation of the molecular bases and biological
247 functions associated with the species' ecological divergence. Furthered by these molecular advances,
248 eco-physiological studies will hopefully be able to shed some light on the biology of marine (*E. cf.*
249 *encrasicolus*) and coastal (*E. maeoticus*) anchovies, investigating the genetic bases of behavioural,
250 physiological and life history traits that explain the persistence of the two species despite their large
251 co-occurrence. Such advances would also provide valuable tools to improve current fishery models
252 and to move towards a management of stocks that takes the biological duality of anchovies into
253 account. Last but not least, we hope that this taxonomic recognition in one of the most emblematic
254 fishes in the Mediterranean ecosystem will encourage future consideration of cryptic subdivisions
255 that also exist in other fish species, in order to ultimately better preserve these hidden layers of
256 biodiversity.

257

258 ACKNOWLEDGEMENTS

259 We are grateful to Dr. Paola Rinelli (CNR Messina) for the samples from lake Ganzirri and Ionian Sea
260 and to Dr. M. L. Molino, Director of the "Riserva Naturale Orientata Capo Peloro" for authorization
261 PROT. INT. N.7140/VI DEL to collect from lake Ganzirri (91/12/2017). We are also grateful to Dr
262 Aurelio Mazzè of the University of Palermo and Christine Bibal from ISEM for helping us find some
263 old papers. Lastly, we would like to thank the Montpellier Bioinformatics Biodiversity platform as
264 well as the GenSeq sequencing platform.

265

266 BIBLIOGRAPHY

267 Alexandrov, A.I., (1925). "Annual report of Kerch Ichthyologic laboratory for the year 1924", *Trudy*
268 *Kerchenskoy ikhtiologicheskoy laboratorii [Reports of the Kertch Ichthyological Laboratory]*, **1**, 32– 34
269 (in Russian)

270 Alexandrov, A.I. (1927). "Anchovies of the Azov–Black Sea basin, their origin and taxonomic
271 designation", *Trudy Kerchenskoi nauchnoi rybokhozyaistvennoi stantsii [Proceedings of Kerch*
272 *Scientific Station of Fisheries]* **1**(2– 3), 35-92 (in Russian, summary in French p. 93-100.)

273 Baird, N.A., Etter, P.D., Atwood, T.S., Currey, M.C., Shiver, A.L., Lewis, Z.A., Selker, E.U, Cresko, W.A.,
274 & Johnson E.A. (2008). Rapid SNP discovery and genetic mapping using sequenced RAD markers.
275 *PLoS ONE* **3**: e3376.

- 276 Borsa, P. (2002). Allozyme, mitochondrial-DNA, and morphometric variability indicate cryptic species
277 of anchovy (*Engraulis encrasicolus*). *Biological Journal of the Linnean Society*, **75**, 261– 269.
- 278 Borsa, P., Collet, A., & Durand, J.D. (2004). Nuclear-DNA markers confirm the presence of two
279 anchovy species in the Mediterranean. *Comptes Rendus Biologies*, **327**, 1113– 1123.
- 280 Catanese, G., Watteaux, R., Montes, I., Barra, M., Rumolo, P., Borme, D., Bongiorno Nardelli, B.,
281 Botte, V., Mazzocchi, M. G., Genovese, S., Di Capua, I., Iriondo, M., Estomba, A., Ruggeri, P., Tirelli, V.,
282 Caputo-Barucchi, V., Basilone, G., Bonanno, A., Iudicone, D. & Procaccini, G. (2017). Insights on the
283 drivers of genetic divergence in the European anchovy. *Scientific Reports*, **7**, 1– 15.
- 284 Catanese, G., Di Capua, I., Iriondo, M., Bonanno, A., Estomba, A., & Procaccini, G. (2020). Application
285 of high-throughput single nucleotide polymorphism genotyping for assessing the origin of *Engraulis*
286 *encrasicolus* eggs. *Aquatic Conservation: Marine and Freshwater Ecosystems*, **30**, 1313– 1324.
- 287 Dulzetto, F. (1940). Su una particolare forma di *Engraulis* della " Plaia » di Catania e del Simeto. *Atti*
288 *della Reale Accademia d' Italia*, **XI**, 325– 400.
- 289 Dulzetto, F. (.), (1947). L'*Engraulis* dei laghi di Ganzirri e del Faro. *Memorie della Società Italiana delle*
290 *Scienze Detta dei XL*, **3** (XXVI), 5– 28,
- 291 Fage., L. (1911). Recherches sur la biologie de l'anchois (*Engraulis encrasicolus* LINNÉ): races âge,
292 migrations. *Annales de l'Institut Océanographique Paris*, **2** (4), 1– 37.
- 293 Grassi, L., (1903). I pesci dei laghi di Ganzirri e Faro. *Neptunia*, Fasc. 17, 18, 19.
- 294 Huret, M., Lebigre, C., Iriondo, M., Montes, I., & Estomba, A. (2020). Genetic population structure of
295 anchovy (*Engraulis encrasicolus*) in North-western Europe and variability in the seasonal distribution
296 of the stocks. *Fisheries Research*, **229**, 105619. <https://doi.org/10.1016/j.fishres.2020.105619>
- 297 Karahan, A. Borsa, P., Gucu, A.C., Kandemir, I., Ozkan, E., Orek, Y. A., Acan, S. c., Koban, E. & Togan, I.
298 (2014). Geometric morphometrics, Fourier analysis of otolith shape, and nuclear-DNA markers
299 distinguish two anchovy species (*Engraulis* spp.) in the Eastern Mediterranean Sea. *Fisheries*
300 *Research*, **159**, 45– 55.
- 301 Lo Giudice, P. (1911a). Le Acciughe dei mari italiani. *Rivista Mensile di Pesca e Idrobiologia*, Pavia, **6**
302 (13), 83– 87.
- 303 Lo Giudice, P. (1911b). Ancora sulle diverse razze locali di Acciughe (*Engraulis encrasicolus* L.).
304 *Rivista Mensile di Pesca e Idrobiologia*, Pavia, **6** (13), 226– 236.
- 305 Lo Giudice, P. (1922). Le Acciughe dei mari Italiani. *Bollettino della Società dei naturalisti in Napoli*,
306 **34**, 196– 209.
- 307 Mallet, James. (2020). Alternative views of biological species: Reproductively isolated units or
308 genotypic clusters?, *National Science Review*, **7**(8), 1401– 1407.
- 309 Maximov, N.E. (1913). "Life pattern and commercial fishery in North-Western part of the Black Sea in
310 front the Bulgarian and Romanian coast". *Ezhagodnik Zoologicheskogo muzeya Imperatorskoi*
311 *akademii nauk [Annales du Musée Zoologique de l'Académie Impériale des Sciences de St.-*
312 *Petersbourg]*, **18**(1), 1– 52 (in Russian)
- 313 Messaoud, H., Bouriga, N., Daly Yahia, M.N., Boumaiza, M., Faure, E., Quignard, J.P. & Trabelsi, M.
314 (2011). Discrimination de trois populations d'anchois du genre *Engraulis* (Clupeiforme, Engraulidae)
315 des côtes Tunisiennes par analyse de forme des otolithes. *Bulletin de l'Institut National des Sciences*
316 *et Techniques de la Mer* (Salambô) **38**, 21– 27.

- 317 Montes, I., Zarraindia, I., Iriondo, M., Grant, W. S., Manzano, C., Cotano, U., Conklin, D., Irigoien,
318 X. & Estonba, A. (2016). Transcriptome analysis deciphers evolutionary mechanisms underlying
319 genetic differentiation between coastal and offshore anchovy populations in the Bay of Biscay.
320 *Marine Biology*, **163**, 1– 13.
- 321 Oueslati, S., Fadhlou-Zid, K., Kada, O., Augé, M.T., Quignard, J.P. & Bonhomme, F. (2014). Existence
322 of two widespread semi-isolated genetic entities within Mediterranean anchovies. *Marine Biology*,
323 **161**, 1063– 1071.
- 324 Pusanov I. I. (1923). "Data on Commercial Ichthyology of the Crimea". *Rybnoe khozyaistvo [Fisheries]*,
325 **2**, 10– 16 (in Russian).
- 326 Pusanov I., Tzeeb, Ya. (1926). "About anchovy races inhabiting the Black and Azov Seas" *Trudy*
327 *Krymskogo nauchno-issledovatel'skogo instituta [Proceedings of the Crimea research Institute]*, **1**, 86–
328 95 (in Russian with German summary).
- 329 Quignard, J. P.; Hamdouni, T. & Zaouli, J. (1973). Données préliminaires sur les caractères
330 biométriques des Anchois *Engraulis encrasicolus* (Linné, 1758) des côtes de Tunisie et du Lac Ichkeul.
331 *Revue des Travaux de l' Institut des Pêches Maritimes* **37** (2), 191– 196.
- 332 Raj, A., Stephens, M. & Pritchard, J.K. (2014). fastSTRUCTURE: Variational Inference of Population
333 Structure in Large SNP Data Sets , *Genetics*, **197**, 573– 589.
- 334 Ruggeri, P., Splendiani, A., Occhipinti, G., Fioravanti, T., Santojanni, A., Leonori, I., De Felice, A.,
335 Arneri, E., Procaccini, G., Catanese, G., Ticina, V., Bonanno, A., Cerioni, P.N., Giovannotti, M., Grant,
336 W.S. & Caputo Barucchi, V. (2016). Biocomplexity in Populations of European Anchovy in the Adriatic
337 Sea. *PLoS ONE*, **11**, e0153061. doi:10.1371/journal.pone.0153061
- 338 Silva G, Lima FP, Martel P, Castilho R (2014) Thermal adaptation and clinal mitochondrial DNA
339 variation of European anchovy. *Proceedings of the Royal Society of London B: Biological Sciences*,
340 **281**, dx.doi.org/10.1098/rspb.2014.1093.
- 341 Tichy, M. I. (1914). "Some words about anchovies. *Vestnik rybopromyshlennosti [Vestnik fishery]*, **1-2**,
342 50– 68 (in Russian).
- 343 Tortonese, E. (1967). Differenziazioni infraspecifiche nelle Acciughe (*Engraulis encrasicolus* L. :
344 Pisces, Clupeiformes) della Sicilia Orientale. *Atti Accadademia Gioenia Scienze Naturali di Catania*, **19**,
345 57– 65.
- 346 Viñas, J., N. Sanz, N., L. Peñarrubia, L., R-M. Araguas, R-M., Garcia-Marin, J-L., Roldan, M.I. & Pla, C.
347 (2014). Genetic population structure of European anchovy in the Mediterranean Sea and the
348 Northeast Atlantic Ocean using sequence analysis of the mitochondrial DNA control region. *ICES*
349 *Journal of Marine Science*, **71**(2), 391– 397.
- 350 Zernov S. A. (1904) "Third report on studying fisheries in Tauride gubernia". S.M.Spiro press
351 Sevastopol., 16 p. (in Russian).
- 352 Zernov S. A. (1913). "On the study of life of the Black Sea". *Mémoires de l' Académie Impériale Des*
353 *Sciences de St.Petersburg* VIII, **32**(1), 167– 171 (in Russian).
- 354 Zheng, X., Levine, D., Shen, J., Gogarten, S. M., Laurie, C., & Weir, B. S. (2012). A high-performance
355 computing toolset for relatedness and principal component analysis of SNP data.
356 *Bioinformatics*, **28**, 3326– 3328.

357 Zuev, G.V. (2019). "Current population structure of the European anchovy *Engraulis encrasicolus* L.
358 (*Engraulidae* ; *Pisces*) in the Black and Azov sea sand history of its formation". *Morskoj Biologicheskij*
359 *Zhurnal [Marine Biological Journal]*, **4**, 45– 62 (in Russian). doi: 10.21072/mbj.2019.04.1.05.

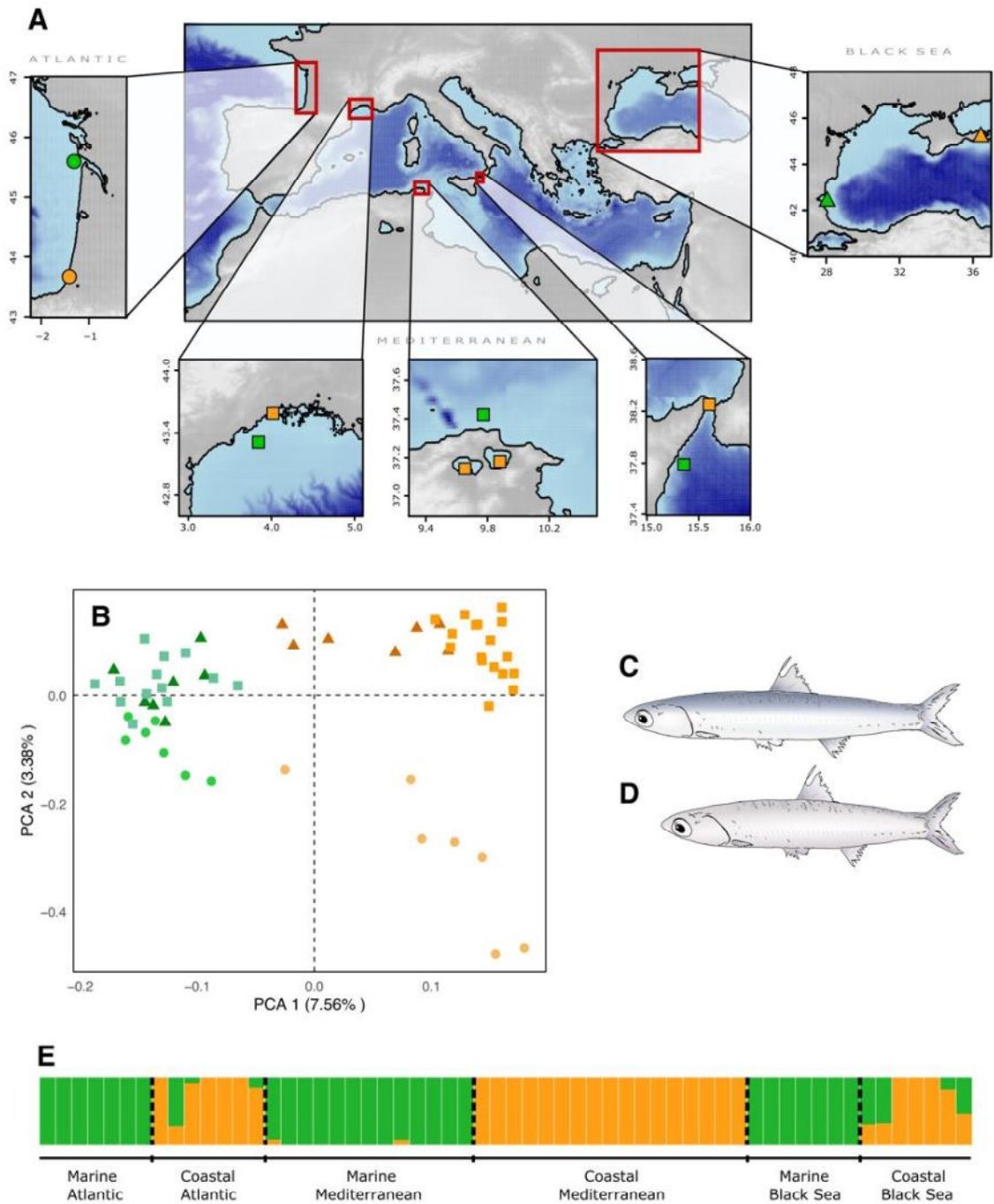
360

361

362 FIGURE and CAPTION

363 .

364



365

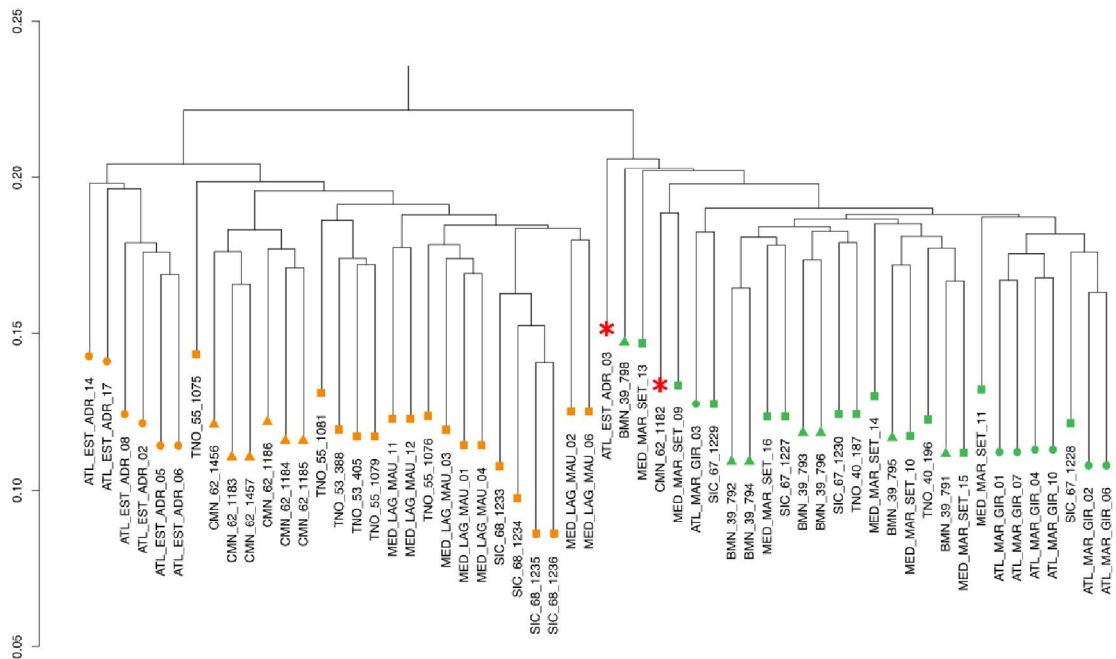
366

367 Figure 1. (A) Sampling locations of *E. cf. encrasicolus*. Symbols represent locations (●: Atlantic; ■:
 368 Mediterranean; ▲: Black Sea) while colours represent habitat type (green: marine; orange: coastal).
 369 (B) Principal component analysis based on 2952 SNPs in 58 individuals (symbols correspond to those
 370 used in A). Schematic representations are shown for anchovies from (C) marine and (D) coastal
 371 habitats. (E) Individual ancestry proportions as determined by FastSTRUCTURE with K=2 clusters
 372 identified

SUPPLEMENTARY MATERIAL

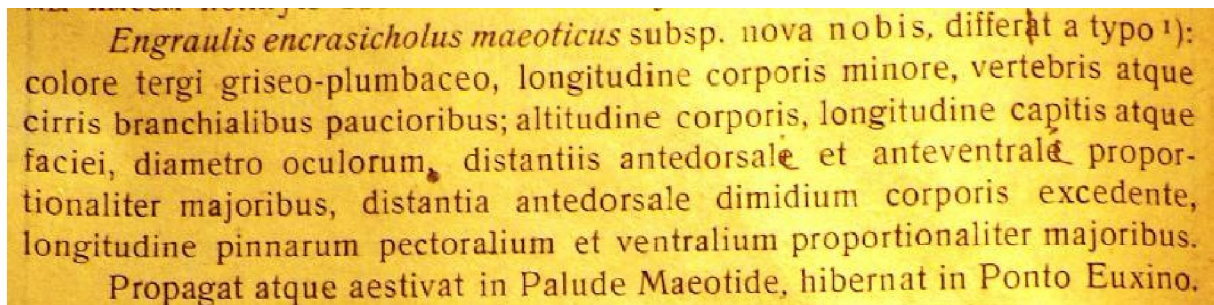
Supplementary Table S1. Anchovy samples used in the current study. Samples marked with an asterisk (*) are from Le Moan et al. (2016).

Sample ID	Numb	Habitat type	Location	Lat	Long	Year
ATL-ADR *	7	Estuary	Gulf of Biscay - Adour	43.51	-1.49	2006
ATL_GIR *	7	Open Sea	Gulf of Biscay - Offshore	45.59	-1.27	2002
BMN_39	7	Open Sea	Black Sea - Offshore	42.46	28.12	2010
CMN_62	7	Coastal	Black Sea - Kerch Strait	45.24	36.50	2017
MED_MAU *	7	Lagoon	Gulf of Lion – Manguio lagoon	43.58	4.02	2013
MED_SET *	7	Open Sea	Gulf of Lion - Offshore	43.30	3.85	2005
SIC_67	4	Open Sea	Sicily – Ionian Sea	37.78	15.36	2018
SIC_68	4	Lagoon	Sicily – Ganzirri lagoon	38.26	15.61	2018
TNO_40	2	Open Sea	Tunisia NW - Offshore	37.42	9.78	2009
TNO_53	2	Lagoon	Tunisia NW – Bizerte lagoon	37.18	9.88	2009
TNO_55	4	Lagoon	Tunisia NW – Ichkeul lagoon	37.14	9.66	2011



Supplementary Figure S2. Dendrogram for 58 anchovy samples based on an IBS distance matrix. Symbols correspond to those used in Fig. 1. Red stars indicate samples that had been collected in coastal areas, but which cluster with marine samples.

Supplementary Figure S3: Original Latin diagnosis from Pusanov & Tseeb (1926)



Translation (from the present paper authors): *Engraulis encrasicolus maeoticus* new subspecies, different from the type¹ by : belly colour lead-grey, smaller body length, smaller number of vertebrae and branchial filaments; body height, head and face length, eye diameter, anterodorsal and anteroventral distances proportionally larger; anterodorsal distance superior than half the body length; length of the pectoral and ventral fin rays proportionally larger.

Migrates and aestivate in Maeotide Lagoon (Azov Sea), overwinters in Euxinus Pontus (Black Sea).

1) : individus ponticis (Black Sea individuals)