



**HAL**  
open science

## A Trajectory of Discovery: Metabolic Regulation by the Conditionally Disordered Chloroplast Protein, CP12

Cassy Gérard, Frédéric Carrière, Véronique Receveur-Bréchet, Hélène Launay, Brigitte Gontero

► **To cite this version:**

Cassy Gérard, Frédéric Carrière, Véronique Receveur-Bréchet, Hélène Launay, Brigitte Gontero. A Trajectory of Discovery: Metabolic Regulation by the Conditionally Disordered Chloroplast Protein, CP12. *Biomolécules*, 2022, 12 (8), pp.1047. 10.3390/biom12081047 . hal-03747280

**HAL Id: hal-03747280**

**<https://amu.hal.science/hal-03747280v1>**

Submitted on 8 Aug 2022

**HAL** is a multi-disciplinary open access archive for the deposit and dissemination of scientific research documents, whether they are published or not. The documents may come from teaching and research institutions in France or abroad, or from public or private research centers.

L'archive ouverte pluridisciplinaire **HAL**, est destinée au dépôt et à la diffusion de documents scientifiques de niveau recherche, publiés ou non, émanant des établissements d'enseignement et de recherche français ou étrangers, des laboratoires publics ou privés.



Distributed under a Creative Commons Attribution 4.0 International License

Review

# A Trajectory of Discovery: Metabolic Regulation by the Conditionally Disordered Chloroplast Protein, CP12

Cassy Gérard , Frédéric Carrière , Véronique Receveur-Bréchet, Hélène Launay \*  and Brigitte Gontero \* 

Aix Marseille Univ, CNRS, BIP, UMR 7281, IMM, FR3479, 31 Chemin J. Aiguier, CEDEX 9, 13 402 Marseille, France; cgerard@imm.cnrs.fr (C.G.); carriere@imm.cnrs.fr (F.C.); veronique.brechot@imm.cnrs.fr (V.R.-B.)

\* Correspondence: helene.launay@univ-amu.fr (H.L.); bmeunier@imm.cnrs.fr (B.G.)

**Abstract:** The chloroplast protein CP12, which is widespread in photosynthetic organisms, belongs to the intrinsically disordered proteins family. This small protein (80 amino acid residues long) presents a bias in its composition; it is enriched in charged amino acids, has a small number of hydrophobic residues, and has a high proportion of disorder-promoting residues. More precisely, CP12 is a conditionally disordered proteins (CDP) dependent upon the redox state of its four cysteine residues. During the day, reducing conditions prevail in the chloroplast, and CP12 is fully disordered. Under oxidizing conditions (night), its cysteine residues form two disulfide bridges that confer some stability to some structural elements. Like many CDPs, CP12 plays key roles, and its redox-dependent conditional disorder is important for the main function of CP12: the dark/light regulation of the Calvin-Benson-Bassham (CBB) cycle responsible for CO<sub>2</sub> assimilation. Oxidized CP12 binds to glyceraldehyde-3-phosphate dehydrogenase and phosphoribulokinase and thereby inhibits their activity. However, recent studies reveal that CP12 may have other functions beyond the CBB cycle regulation. In this review, we report the discovery of this protein, its features as a disordered protein, and the many functions this small protein can have.

**Keywords:** Calvin-Benson-Bassham cycle; conditionally disordered protein; history of modern science; metabolism regulation; moonlighting protein; protein-protein interaction



**Citation:** Gérard, C.; Carrière, F.; Receveur-Bréchet, V.; Launay, H.; Gontero, B. A Trajectory of Discovery: Metabolic Regulation by the Conditionally Disordered Chloroplast Protein, CP12. *Biomolecules* **2022**, *12*, 1047. <https://doi.org/10.3390/biom12081047>

Academic Editors: Prakash Kulkarni, Stefania Brocca, Keith Dunker and Sonia Longhi

Received: 27 June 2022

Accepted: 26 July 2022

Published: 28 July 2022

**Publisher's Note:** MDPI stays neutral with regard to jurisdictional claims in published maps and institutional affiliations.



**Copyright:** © 2022 by the authors. Licensee MDPI, Basel, Switzerland. This article is an open access article distributed under the terms and conditions of the Creative Commons Attribution (CC BY) license (<https://creativecommons.org/licenses/by/4.0/>).

## 1. Introduction

As V. Uversky mentioned, the discovery of the natural abundance and functional importance of intrinsically disordered proteins (IDPs) has changed protein science [1]. It is now widely accepted that the protein structure-function paradigm that dominated scientific minds for more than 100 years does not hold true for all proteins, and IDPs or proteins containing disordered regions (IDRs) are widespread in all areas of life. IDPs and IDRs differ from structured globular proteins and domains in many respects, such as their amino acid composition, complexity of sequence, hydrophobicity, charge, flexibility, and rate of amino acid substitutions over evolutionary time [2]. They play significant roles in many biological processes, such as control of the cell cycle, transcriptional activation, and signaling, and they frequently interact with many partners or function as central hubs in protein interaction networks. However, in the plant kingdom only a few IDPs have been studied through a recent analysis of 12 plant genomes, which revealed that the occurrence of disorder in plants is similar to that in many other eukaryotes [3]. In plants, most of the information on IDPs comes from *Arabidopsis thaliana*, and among them, to cite but a few, the late embryogenesis abundant (LEA) proteins that are important IDPs are mainly associated with environmental stress [4]. In the algae research field, a recent experimental study reported that 682 proteins from a chlorophyte, *Chlamydomonas reinhardtii*, were heat-resistant, and 299 were predicted to be disordered by four different disorder predictors [5]. However, only a few algal proteins that are fully or partially disordered have been studied [6–9]. Among them, only

the essential pyrenoid component 1 (EPYC1) [10–14], and, above all, the chloroplast protein of 12 kDa (CP12), as evidenced below, have been experimentally studied in depth.

## 2. Discovery of a Small Protein, CP12, in Photosynthetic Organisms

In 1996, cDNA clones were reported from expression libraries for a nuclear-encoded chloroplast protein in three higher plants: pea, spinach, and tobacco, which was named CP12 [15]. This was the first report on CP12, and at this stage, not much was known about this protein. The authors found that this protein consists of about 75 amino acid residues, and it had an abnormal electrophoretic mobility in sodium dodecyl sulfate-polyacrylamide gel electrophoresis (SDS-PAGE) experiments. In addition, they noticed that the CP12 proteins from the three higher plants had a high content of charged amino acid residues, and their conclusion at this time was that this protein was highly hydrophilic and very likely a good candidate for a soluble stroma-located protein within the chloroplast. In all of the three species, two conserved cysteine residues are present at the N- and at the C-terminus that are separated by eight amino acid residues with a central proline residue. The secondary structure prediction suggested that CP12 has a central helix and is organized into two domains, with each containing two cysteine residues that could form disulfide bonds (Figure 1). In this pioneer work, they also showed that CP12 could interact with an enzyme from the Calvin-Benson-Bassham (CBB) cycle, the glyceraldehyde -3-phosphate dehydrogenase (GAPDH, EC 1.2.1.13) [15].



**Figure 1.** Schematic representation of the predicted secondary structure of mature CP12. Cysteine residues proposed to form peptide loops and that can form two disulfide bridges (C23–C31 and C66–C75) when CP12 is oxidized are indicated with black circles. These two loops are separated by an alpha helix. The proline residue conserved in CP12 from *Plantae* is shown with a yellow circle. Numbering is from the *C. reinhardtii* mature CP12 sequence. This figure was created with BioRender (<https://biorender.com/> (accessed on 25 July 2022)) and adapted from Wedel et al. [16].

Later, in a work performed on spinach leaves, the same group showed that CP12 not only interacts with GAPDH but also with another enzyme of the CBB cycle, the phosphoribulokinase (PRK, EC 2.7.1.19) [16]. They showed that CP12 could form a 600 kDa complex with the two enzymes mentioned above. This ternary complex was not affected by the presence of NAD(H), but the presence of NADP or NADPH, as well as the high concentration of a reducing agent, dithiothreitol (DTT), led to its dissociation. The authors proposed a model in which the ternary complex exists under dark and dissociates under light. Their results and those of other groups in the literature suggested that the enzymes within the complex were inactive and became active upon dissociation [17–19]. Since the CBB cycle does not operate in the dark and become active in the light, the association–dissociation of this complex could be a means to regulate the CBB cycle upon dark–light transitions and reciprocally.

At the same time, Avilan et al. found a complex made up of PRK and GAPDH in the green alga, *C. reinhardtii* [20]. In the green algae, there is a unique form of GAPDH, the homotetrameric A<sub>4</sub>, while in higher plants there is also an A<sub>2</sub>B<sub>2</sub> where the B-type subunit has a C-terminal extremity that presents homology to the C-terminus of CP12. These authors deeply analyzed the characteristics and the kinetics of the enzymes within the complex and those of the enzymes that dissociated from it [20–23]. They purified this complex to homogeneity, and, later, the presence of CP12 in the PRK/GAPDH complex reported previously was revealed by MALDI-ToF mass spectrometry [24]. N-terminal sequencing by Edman degradation of the ternary complex allowed one to determine the first amino acid residues of each protein and revealed that the sequence of the mature

CP12 starts at SGQPA [25]. Therefore, the complex isolated by Avilan et al. had the same compositions as that found by Wedel et al. Indeed, in 1998, Wedel et al. showed that CP12 was present not only in higher plants but also in *C. reinhardtii*, as well as in many other species (mosses, cyanobacteria). The presence of CP12 in this complex agreed with the cryo-electron microscopy performed on this purified complex, which suggested that other components besides PRK and GAPDH were present [26]. The activities of the enzymes involved in this complex were regulated in vitro by metabolites such as NADP(H) [16,27,28]. All together, these results provided new ideas for the regulation of photosynthesis and were further investigated by many groups.

In *C. reinhardtii*, it was shown that not only the regulatory properties of GAPDH but also its kinetics parameters were affected by CP12. Native GAPDH and recombinant algal GAPDH displayed Michaelis-Menten kinetics with NADH and NADPH as cofactors, with a marked preference for NADPH. Both forms displayed positive cooperativity towards the substrate, 1,3-bisphosphoglycerate (BPGA), but interestingly, these kinetic analyses showed that the native GAPDH had a two-fold lower catalytic constant for the reduction of BPGA, as well as a two-fold lower pseudo-affinity ( $K_{0.5}$ ) for BPGA compared to recombinant GAPDH [24]. These results were surprising, but using mass spectrometry the authors showed that the native GAPDH was still associated with CP12. At the same time, as only a partial sequence of the *C. reinhardtii* CP12 was obtained by PCR, the same authors cloned the entire cDNA of this algal protein and subsequently expressed the protein in *Escherichia coli* [25].

If some results suggested that the PRK/GAPDH/CP12 allowed for the regulation of these enzymes, the presence of this small protein raised a question about its role in the formation of the complex. The role of CP12 in the assembly pathway of the algal PRK/GAPDH/CP12 complex was thus investigated as no complex could be reconstituted in vitro with the native PRK and the recombinant GAPDH devoid of CP12.

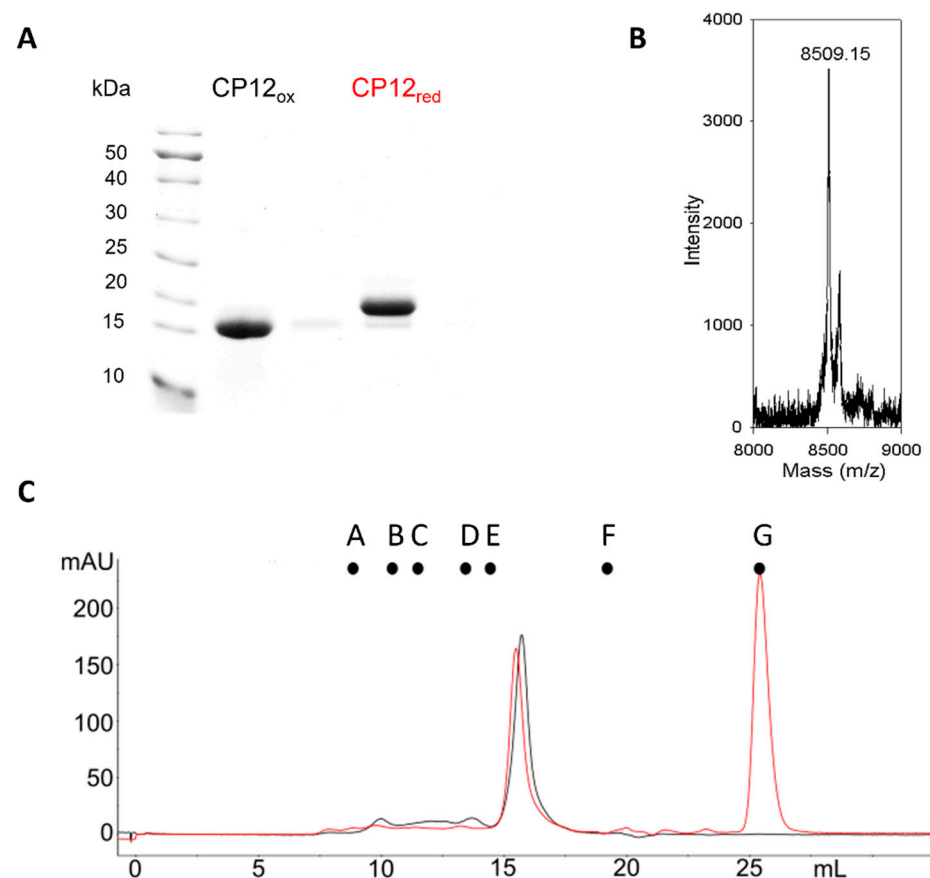
In darkened spinach leaves, Scheibe's group also showed that GAPDH can exist under two inactive aggregated states, one that corresponded to a hexadecameric  $A_8B_8$  form and another one that corresponded to the PRK/GAPDH/CP12 complex. Only the dissociation of these edifices with reducing treatment mimicking light resulted in the activity of the released enzymes [29]. The role of CP12 was, by then, far from being understood. Of interest, in the literature, many high oligomerization states of either GAPDH or PRK, in spinach but also in *Phaenolus vulgaris*, have been reported [30]. In spinach, the oligomeric enzymes had latent activity that only appeared upon dissociation [31,32]. In the 20th century, the existence of supramolecular complexes was not recognized in living cells and their existence was seen as artefactual. Therefore, the data were differentially interpreted, but it is very likely that the high molecular mass of GAPDH and PRK with latent activity in fact corresponded to supramolecular complexes.

In the green algae as in the higher plants, it was later shown that the four cysteine residues could form two disulfide bridges, one bridging the N-terminal cysteine pair (residues 23 and 31 in *C. reinhardtii*) and one bridging the C-terminal pair (residues 66 and 75 in *C. reinhardtii*). It was shown using surface plasmon resonance that CP12 under its oxidized state, with two disulfide bridges, was able to bind sequentially to GAPDH with a high affinity ( $K_D$  equal to 0.44 nM), and then this subcomplex was able to bind to PRK ( $K_D$  equal to 60 nM). The affinity of CP12 for GAPDH was higher than the one found ( $\mu$ M range) for the Arabidopsis complex [33]. The entity composed of one tetrameric GAPDH, one dimeric PRK, and CP12 (the stoichiometry of which was yet unknown) was defined as a unit. This entity was then able to dimerize to provide the native complex. CP12 therefore acted as a linker in the assembly of the ternary PRK/GAPDH/CP12 complex [25]. Later, native mass spectrometry revealed that two monomeric CP12 molecules were bound to one GAPDH tetramer [34]. Consequently, the stoichiometry inside the ternary complex is two tetrameric GAPDH, two dimeric PRK, and four monomeric CP12. Studies using mutagenesis and limited proteolysis have allowed the residues involved in the interaction between CP12

and GAPDH from *C. reinhardtii* to be mapped and to show that this interaction involves the S-loop arginine residues of GAPDH and the C-terminus of CP12 [35].

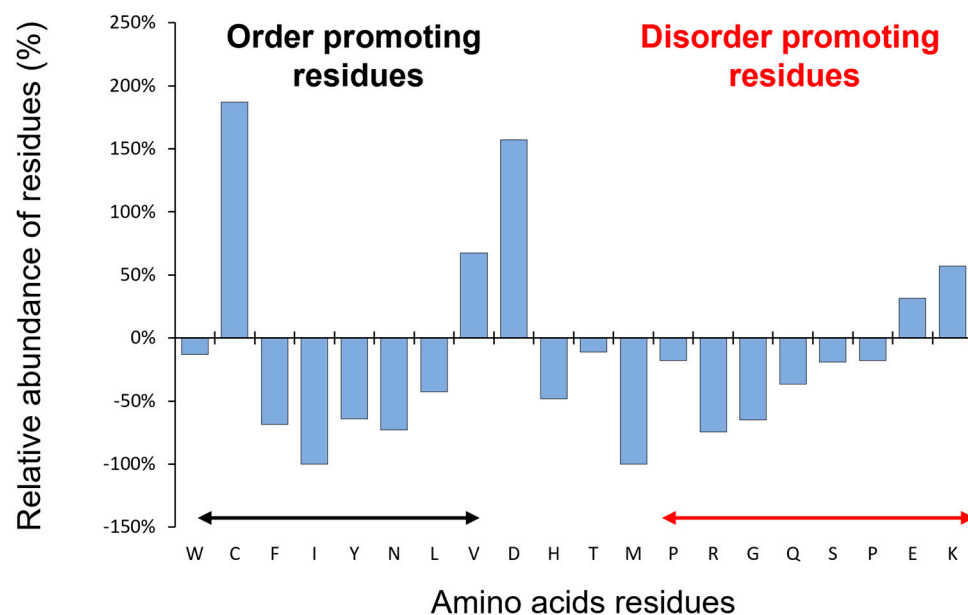
### 3. CP12, a Flexible Protein

The first observation of CP12 as an IDP was its abnormal behavior under SDS-PAGE. The protein migrates as a 15 kDa under oxidized form and 25 kDa under its reduced form for *C. reinhardtii*, while the expected theoretical molecular mass of the monomer is 8.5 kDa (Figure 2A,B). Moreover, using size-exclusion chromatography, the elution volume of *C. reinhardtii* CP12 released from the PRK/GAPDH/CP12 complex corresponded to an apparent molecular mass of  $35 \pm 4$  kDa using a column calibrated with globular proteins (Figure 2C). This could correspond to a tetrameric globular form that has never been proven or to an elongated form. These enigmatic behaviors of CP12 were only understood after the concept of IDP was claimed [2,36–38]. The size exclusion elution volume mentioned above correlates to a hydrodynamic radius of  $2.8 \pm 0.1$  nm, which corresponds to the expected hydrodynamic properties of a random-coil polymer of 8.8 kDa. These values were in agreement with those confirmed by fluorescence correlation spectroscopy experiments [39]. In 2003, for the first time, it was proposed that the *C. reinhardtii* CP12 belongs to the IDP family (formerly also called an “intrinsically unstructured protein”) [25]. Indeed, CP12 possesses a range of properties that are landmarks of IDPs such as a bias in amino acid composition, is enriched in charged amino acid residues, is depleted in hydrophobic residues, and has a high proportion of disorder-promoting residues (Figure 3). Even if CP12 has a high proportion of disorder-promoting residues, the presence of cysteine residues was first surprising as cysteine residues were considered as “order-promoting residues” due to their ability to form inter- or intramolecular disulfide bridges.



**Figure 2.** CP12 behaves as an IDP. (A) SDS-PAGE (12%) of 4  $\mu$ g *C. reinhardtii* recombinant CP12 under its oxidized or reduced state. (B) MALDI-ToF mass spectrum of the native CP12 isolated from the PRK/GAPDH/CP12 complex of *C. reinhardtii*. (C) Size-exclusion chromatography profile

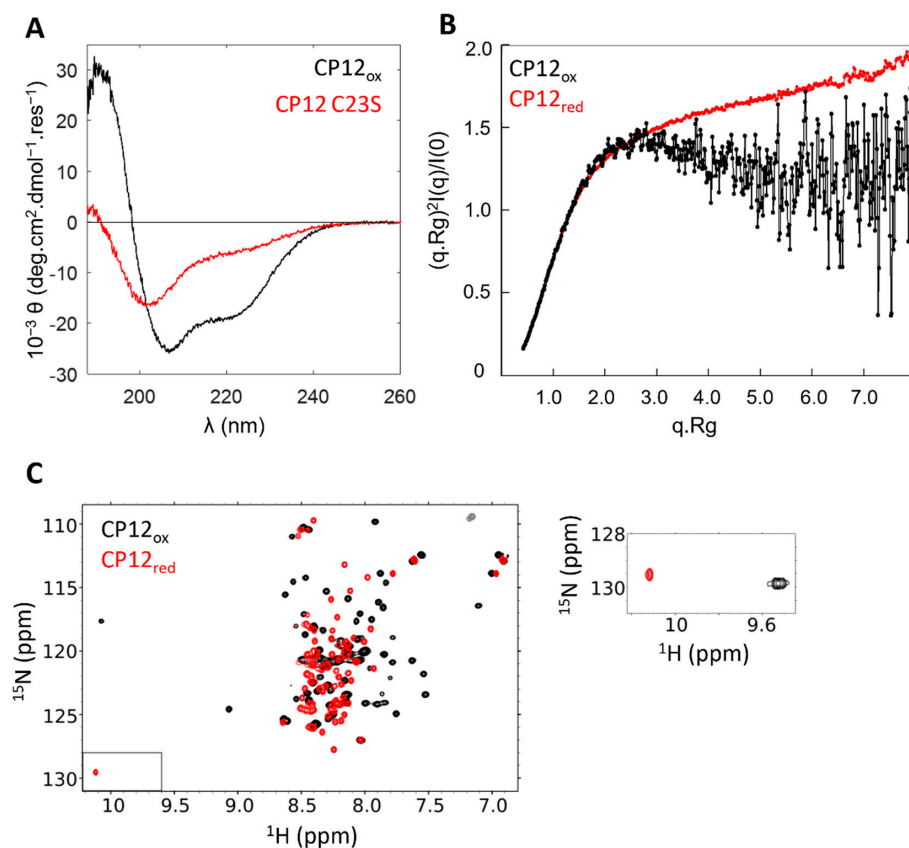
of *C. reinhardtii* recombinant CP12 under oxidized (black) or reduced (red) conditions (column: Superdex 200 10 × 300 mm). Above the chromatogram, the dots from A to G indicate the position of molecular-weight standard globular proteins. A: Ferritin (MW 440 kDa,  $r_H$  6.8 nm); B: Catalase (MW 240 kDa,  $r_H$  5.5 nm); C: dimer of Bovine Serum Albumin (BSA, MW 136 kDa,  $r_H$  4.5 nm); D: monomer of BSA (MW 68 kDa,  $r_H$  3.5 nm); E: Ovalbumin (MW 43 kDa,  $r_H$  3 nm); F: Cytochrome (MW 12.5 kDa,  $r_H$  2 nm); and G: oxidized form of DTT. MW and  $r_H$  stand for molecular weight and hydrodynamic radius.



**Figure 3.** CP12 presents a bias in amino acid composition. Comparison of amino acid composition between globular proteins and *C. reinhardtii* CP12 using composition profiler (<http://www.cprofiler.org> (accessed on 25 July 2022)) [40]. The globular proteins dataset is from protein data bank (PDB) Select 25.

After the identification of CP12 as an IDP, a range of biophysical techniques confirmed that reduced CP12 completely lacks stable secondary and tertiary structural elements. The circular dichroism (CD) spectrum of reduced CP12 (or imitations of reduced CP12 using cysteine to serine mutants) showed a minimum ellipticity at 200 nm, as is characteristic for disordered proteins (Figure 4A) [25]. The Kratky representation of the small-angle X-ray scattering (SAXS) data of reduced CP12 exhibited a plateau at  $q \cdot R_g > 2$  typical of random polymers and characteristic of fully disordered proteins (Figure 4B) [41]. The  $^1\text{H}$  nuclear magnetic resonance (NMR) frequencies of all resonances from reduced CP12 showed minimal chemical shift dispersion (clustered from 7.5 to 8.5 ppm); their linewidths were sharp, and all the features of NMR data were typical of that disordered proteins (Figure 4C) [41]. In addition, NMR data confirmed that reduced CP12 exchanges between a myriad of possible conformations rapidly at a timescale of less than a nanosecond, as expected for an IDP. Other biophysical methods confirmed the IDP properties for reduced CP12, including Förster resonance energy transfer (FRET), fluorescence correlation spectroscopy (FCS), or mass spectrometry [42]. Moreover, it was shown that under oxidized conditions, CP12 was partially folded but still very flexible, and only a model structure obtained by sequence-based molecular modelling was available for many years [43]. CD analysis showed that it was much more helical than in its reduced form (Figure 4A), and an ion-mobility mass spectrometry study showed that the algal oxidized CP12 exists under two conformational states, a compact one and an extended one [34]. Later, experimental data obtained by SAXS also showed atypical features: the Kratky plot of oxidized CP12 was an intermediate between that of a well-folded protein (a bell-shaped curve with a

maximum at  $q \cdot R_g$  value of  $\sqrt{3}$ ) and that of a fully disordered protein (such as that of reduced CP12), and these features are characteristic of protein with unstable structural properties (Figure 4B) [44,45]. The SAXS profile revealed the co-existence of two populations of conformers in solution, a compact one and a more disordered one, with all features being characteristic of protein with unstable structural properties. Similarly, the  $^1\text{H}$ - $^{15}\text{N}$  NMR spectrum of oxidized CP12 differed from that of reduced CP12 and showed a small number of dispersed resonances together with a large number of broad resonances clustered from 7.5 to 8.5 ppm (Figure 4C). All these experimental data could be reconciled with a two-state equilibrium for the algal oxidized CP12: (i) 60% of the oxidized CP12 molecules have two helices in the N-terminal half of the protein and a globular domain at the C-terminus; (ii) 40% of the oxidized CP12 molecules have only the globular fold at the C-terminus, while the N-terminal half remains disordered [44]. The multiple structural transitions and conformational flexibility of CP12 could provide a clue on how this protein can carry variable functions and bind multiple partners. When the stable C-terminal structural element of the *C. reinhardtii* oxidized CP12 binds to GAPDH, it induces a cryptic disorder, and its unstable N-terminal region is further destabilized to favor a disordered conformation [44]. This structural transition upon GAPDH binding contrasts to plant oxidized CP12, where the binding of GAPDH leads to a compaction of the N-terminal region [36,37]. These differences in the stability of the N-terminal region of oxidized CP12 correlate with the differences of relative affinity of CP12 for GAPDH between the algal and the plant species mentioned above with opposite entropic contribution to the binding.



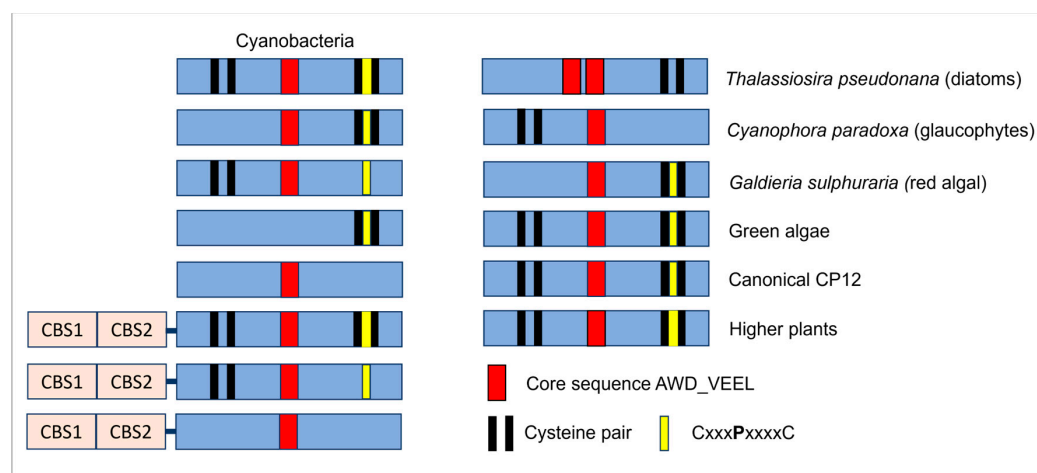
**Figure 4.** Biophysical analysis of CP12 confirmed that CP12 is an IDP. (A) Circular dichroism spectra of 10  $\mu\text{M}$  recombinant *C. reinhardtii* oxidized CP12 (black), and of a CP12 mutant lacking the N-terminal disulfide bridge (mimicking reducing conditions, red). (B) Normalised Kratky representation of the SAXS data of the oxidized (black) and reduced (red) form of recombinant *C. reinhardtii* CP12. (C) NMR  $^1\text{H}$ - $^{15}\text{N}$ -HSQC spectra of the oxidized (black) and reduced (red) form of recombinant *C. reinhardtii* CP12. The box between 9.5 and 10 ppm corresponds to the insert shown on the left.

Because the structural properties of CP12 vary significantly depending upon the redox conditions, the term conditionally disordered was coined for this protein. Structural properties of CDP such as CP12 are challenging to analyze [46]. Therefore, the only high-resolution structures available for CP12 are those of oxidized CP12 within the ternary complex and have been deciphered recently by crystallography and cryo-electron microscopy [47–50].

CP12 is not the unique protein that undergoes structural transitions upon oxidation/reduction, and it is predicted that redox-sensitive CDPs are widespread and have key roles in many eukaryotic processes [51]. Based on the computational platform, IUPred2A, it was predicted that cysteine-rich sequences display significant disorder in the reduced but not the oxidized form, increasing the potential for such sequences to function in a redox-sensitive manner [52]. In photosynthetic organisms where dark-light transitions are correlated to different oxido-reduction conditions, this concept is of paramount importance. The redox structural transitions that have been observed for CP12 might be highly relevant to CP12 being a redox switch of the CBB cycle [53].

#### 4. CP12, a Widespread Protein with Sequence Variations on an Original Theme

After 2002, the number of manuscripts dealing with this protein started to increase, and CP12 has been found in many species such as higher plants, microalgae and cyanobacteria [54]. The canonical CP12 sequence contains one N-terminal cysteine residue pair separated by seven or eight residues, one C-terminal cysteine residue pair separated by eight residues encompassing a central proline residue (CxxxPxxxxC), and a core sequence AWD\_VEEL (Figure 5). The two pairs of cysteine residues are capable of forming disulfide bridges required to form the ternary complex described above in green algae and higher plants [55]. However, in the glaucophyte *Cyanophora paradoxa*, CP12 lacks the two cysteine residues at the N-terminus [54]. The lack of the N-terminal pair of cysteine residues was also found in the red algal *Galdieria sulphuraria* CP12 and *Synechococcus elongatus* PCC7942, but it did not impair the formation of the ternary complex [56,57]. Though these two cysteine residues were claimed to be important to the PRK binding in higher plants, the presence of the disulfide bond at the N-terminus of CP12 might not be a requisite for PRK binding. It is, however, possible that the affinity between PRK and CP12 is much lower when this disulfide bond is absent and that its absence modulates the stability of the N-terminal helical hairpin described above. Indeed, the mutant of CP12 lacking this disulfide bond is less prone to interact with PRK, but a faint band is still present, indicating a degree of PRK and CP12 interaction [16].



**Figure 5.** Schematic representation of structural variants of CP12. CBS (orange rectangles) stands for cystathionine  $\beta$ -synthase. The pairs of black lines represent cysteine residues pairs, the red rectangles represent the core sequences AWD\_VEEL, and the yellow lines represent the central proline within the C-terminal residues pair. Adapted from D.N Stanley et al., 2013 [58].



In cyanobacteria, CP12 proteins fused to two cystathionine  $\beta$ -synthase (CBS) domains (CBS-CP12) were found beside the stand-alone CP12, and at present, CBS-fused CP12 has only been reported in these organisms. These CBS-proteins are widespread, and the analysis of 333 cyanobacterial genomes revealed the presence of many variants (Figure 5) [58].

A CP12-like protein was reported in the freshwater diatom, *Asterionella formosa*, that was associated with GAPDH and the ferredoxin NADP reductase, but the sequence of this protein is not available [59,60]. In contrast, in the marine diatom, *Thalassiosira pseudonana*, three CP12 proteins were identified, CP12-1 and CP12-2 were predicted to be localized in the chloroplast, and only CP12-2 was found in expressed sequence tags (ESTs) database and further characterized [61]. The gene coding for this protein in other diatoms was also found. In diatoms, nonetheless, PRK/GAPDH/CP12 has never been found [62], and it seems that the absence of two cysteine residues at positions 245 and 248 on diatom PRK could explain this [63]. Like the canonical CP12, the *T. pseudonana* CP12 possesses some intrinsically disordered regions, is highly dynamic but possesses a central coiled coil motif, and is dimeric, and these characteristics give *T. pseudonana* CP12-2 a form of an elongated cylinder with kinks [61].

The cyanophage-infecting marine picocyanobacteria of the genera Prochlorococcus and Synechococcus have been shown to express a protein that has a C-terminal extension similar to that of CP12. This protein shuts down the CBB cycle, as does the canonical CP12, and uses the NADPH produced by the host to fuel their own deoxynucleotide biosynthesis for replication [64]. Other proteins also possess a C-terminal extension similar to the C-terminus of CP12, such as the B subunit of the higher plant A<sub>2</sub>B<sub>2</sub> GAPDH, the adenylate kinase 3 (ADK3) from *C. reinhardtii*, and the argininosuccinate lyase. This CxxxPxxxxC extremity interacts with GAPDH in the PRK/GAPDH/CP12, and this interaction is also conserved in the A<sub>2</sub>B<sub>2</sub> GAPDH and the ADK3 [65,66]. In the prasinophycean green algae, *Ostreococcus tauri* and *Ostreococcus lucimarinus*, CP12 is not present, but they possess the redox-regulated B subunit of GAPDH, which is typical of *Streptophyta* [67].

Three isoforms of CP12 have been reported in higher plants [66]. In *A. thaliana*, the transcripts localization of the isoforms differs; CP12-1 and CP12-2 are mostly expressed in photosynthetic tissues, whereas CP12-3 is expressed in non-photosynthetic tissues such as in the roots. In contrast, in *C. reinhardtii*, one unique isoform has been reported to be localized in the chloroplast. In the C<sub>4</sub> plant maize (*Zea mays*), a CP12 homolog was found in the bundle sheath and not in the mesophyll cells [68]. Recently, two CP12 proteins were found in sugarcane, another C<sub>4</sub> plant [69]. Though yet never reported, it is very likely that plants with a crassulacean acid metabolism (CAM) also possess this protein. Therefore, it seems that this protein is ubiquitous in the plant kingdom.

## 5. One Gene, One Protein, Many Functions

### 5.1. CP12 Jack-of-All Trades but Master of the CBB Cycle

As mentioned above, CP12 is known to be the master of the CBB cycle [9]. The involvement of oxidized CP12 in supramolecular complexes containing GAPDH and PRK has been demonstrated in several photosynthetic organisms though the strength of binding between these proteins differs among species. As mentioned above, the dissociation constant for GAPDH/CP12 is in the micromolar range in *A. thaliana* [33] but in the nanomolar range in *C. reinhardtii* [25]. The flexibility and the net negative charge of CP12 may increase its reactive area and 'stickiness' compared with rigid proteins, thus enhancing the ability of this protein to act as a 'scaffold protein' [70].

In *S. elongatus* PCC7942, CP12 forms the ternary complex in response to NADP(H)/NAD(H) ratio. Of interest, most CBB enzymes are not redox-regulated in cyanobacteria [57], whereas in higher plants and green algae, some CBB enzymes are redox-regulated via the thioredoxins (Trx). In Plantae, the Trx participate, in addition to the association-dissociation of the complex PRK/CP12/GAPDH, regulates PRK and GAPDH enzymes activities. PRK and CP12 are reduced by Trx f and m and could be oxidized by the newly characterized TrxLike2 [71,72]. The presence of CP12 has been shown to modify the PRK redox regulation,

and, in particular, the formation of the ternary complex decreases the time required for PRK activation [73]. CP12 is also responsible for the redox regulation of the A<sub>4</sub> form of GAPDH in *C. reinhardtii* [35]. In contrast, the A<sub>2</sub>B<sub>2</sub> form of GAPDH is autonomously redox-regulated, and CP12 therefore might not be required. Nevertheless, the A<sub>2</sub>B<sub>2</sub> GAPDH is found in the ternary complex and is more easily activated in dimmer light than the A<sub>8</sub>B<sub>8</sub> GAPDH oligomer mentioned above [29]. This suggests that CP12 can have other functions than the redox regulation of PRK and GAPDH.

The expression of the genes encoding GAPDH, PRK, and CP12-2 in *A. thaliana* was found to be coordinated, and this suggests that they are regulated at the transcriptional level [74,75]. This suggests that CP12 is involved in the post-translational regulation and at the transcriptional level. A recent study showed that reduced *C. reinhardtii* CP12 stabilizes PRK in vitro and in vivo, but the mechanism of this protection needs further investigation [76,77]. In the mutant strain of *C. reinhardtii*, where the CP12 protein is absent, while the abundance of numerous proteins increases (see below), the abundance of others, including PRK, involved in photosynthesis, decreases. This is in agreement with other studies on *N. tabacum*, *A. thaliana*, and *S. guianensis* that showed that photosynthetic efficiency is reduced in the CP12 deletion mutant [76–80].

### 5.2. CP12, Other Functions

Like many IDPs, CP12 is a promiscuous protein, and in *C. reinhardtii*, in an oxidized state, it can bind other enzymes such as the malate dehydrogenase, the elongation factor 1 $\alpha$ 2, and 38 kDa ribosome-associated protein, but to a lesser extent than PRK, GAPDH, and the fructose-1,6-bisphosphate aldolase [81]. IDPs are well known to be a hub for the supramolecular complex, but it is surprising that, so far, no interacting partners have been identified for the disordered reduced CP12, and this has probably been overlooked.

Several studies have shown that the role of CP12 is beyond the CBB cycle. In *C. reinhardtii*, the deletion of the protein induced a re-routing of the metabolism under the light. In particular, metabolic pathways involving malate shuttles increased in the mutant such as the tricarboxylic acid cycle (TCA) and the glyoxylate pathway [77]. Malate shuttles, combined with other signaling factors, play a putative role in algal CO<sub>2</sub>-concentrating mechanisms (CCM) [82,83]. In relation to this, it can be noticed that CP12 increases in low CO<sub>2</sub> conditions in *T. pseudonana*, conditions that trigger CCM [84]. In *N. tabacum* antisense plants, the activity of malate dehydrogenase and glucose-6-phosphate dehydrogenase decreased, and transcripts for polyamine metabolism and polyphenol oxidase were up-regulated [78,79]. A CP12-disrupted strain was engineered in *S. elongatus* PCC7942, and its growth was similar to that of wild-type cells under continuous light but was significantly reduced under the light/dark cycle (12 h/12 h) [57,85]. In the dark, the O<sub>2</sub> consumption by the mutant strain was lower, and the concentration of ribulose-1,5-bisphosphate, the product of the PRK reaction, was higher than for the wild-type. In cyanobacteria, the main metabolic pathway in the dark is the oxidative pentose phosphate (OPP) pathway that also encompasses the ribulose-1,5-bisphosphate. By inhibiting the activity of PRK and GAPDH in the dark, CP12 thus regulates the carbon flow from the CBB cycle to the OPP cycle. The authors also found that the cyanobacterial CP12 can bind NADPH (not NADH), but this has not been reported and/or studied to our knowledge in any other CP12. All these results show that the role of CP12 is beyond the regulation of the CBB cycle. In the sugarcane, the expression of one of the isoform of the CP12—ShCP12-1—decreased immediately on the onset of sucrose accumulation that occurs under the yellow canopy syndrome, a specific pattern of leaf yellowing accompanied by abnormal and lethal accumulation of sucrose and starch in leaves [69]. This CP12 might therefore be the primary regulation point of sugar feedback regulation occurring in C<sub>4</sub> plants, while the two carboxylating enzymes, ribulose-1,5-bisphosphate carboxylase oxygenase (RuBisCO) and phosphoenolpyruvate carboxylase, were only negatively regulated at a later stage and might be the secondary regulation points.

In cyanobacteria, CP12 has been found in a fusion protein with a CBS domain, as mentioned above. A study of CBS-CP12 from *Microcystis aeruginosa* revealed that the gene expression of this protein is clearly light-induced. In addition, CBS-CP12 oligomerizes and forms a hexamer but does not form the ternary complex with GAPDH and PRK. It can bind AMP and then inhibits the activation of PRK by thioredoxins [86]. The authors propose that this new architecture provides CP12 additional regulatory functions in cyanobacteria.

### 5.3. CP12, an Anti-Stress Protein

In both *A. thaliana* and *N. tabacum*, the antisense suppression of CP12 increased the expression of proteins related to oxidative stress [87]. Recently, it has been shown in *C. reinhardtii* that the suppression of CP12 leads also to an increase in the proteins involved in stress [77]. In addition, in cyanobacteria, CP12 might be involved in oxidative stress by controlling the electrons flux from Photosystem I. Indeed, while the growth at low light of the wild-type and the CP12 mutant strain were the same, at high light the mutant strain grew more slowly. The chlorophyll content also decreased in this strain, and the reactive oxygen species increased [85], while in *A. thaliana* and *C. reinhardtii*, it has been shown that CP12 provides the thiol groups PRK and GAPDH protection against oxidative damage [87]. In cyanobacteria, the defense mechanism could be different and independent of the thiol groups of these enzymes [57].

In *C. reinhardtii*, CP12 protected GAPDH against heat inactivation and aggregation and therefore plays the role of a specific chaperone [88]. As mentioned above, CP12 also protects PRK against irreversible inactivation in vitro [77]. Besides these roles as a specific chaperone, CP12 from other organisms is more abundant in stress conditions, and this is the case for the *T. pseudonana* CP12-2. The expression of this protein was higher under low CO<sub>2</sub> [84] but also under N, P, or Si limited conditions [89]. These results therefore indicate that CP12 is not specific to carbon metabolism.

In the tropical legume, *Stylosanthes guianensis*, the higher expression of CP12 increases growth and plant height. In addition to the expected functions, a potential role for CP12 in chilling tolerance has been suggested [80]. A recent transcriptomic analysis of maize also revealed the different regulations of cold-responsive genes and, among them, the CP12 gene is present [90].

All these results show that the role of CP12 is not restricted to the formation of the well-known supramolecular complex involving PRK and GAPDH but is probably more general and characterized not only by conformation heterogeneity but also by functional heterogeneity defining its moonlighting signature as many IDPs.

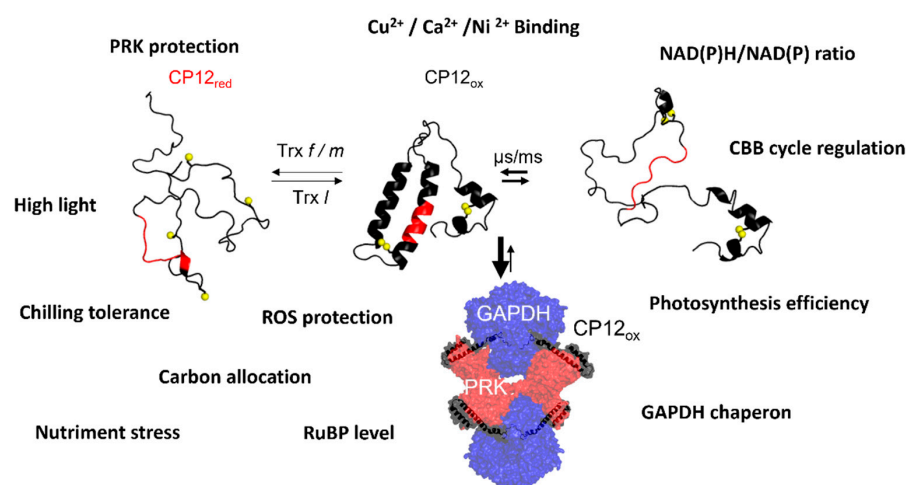
### 5.4. CP12 and Metal Ions

Metal binding is ubiquitous in biology, being important for folding, stability, transportation, and catalysis [91]. *C. reinhardtii* recombinant CP12 purified by affinity chromatography on nickel columns had a yellow color, even after dialysis with a buffer devoid of metal and imidazole. The absorption spectra from 280 to 600 nm showed the presence of a broad peak around 410 nm, and these spectra strongly resembled those of ferredoxin [92]. Using electrospray non-denaturing mass spectrometry, the authors showed that CP12 was specifically able to bind Cu<sup>2+</sup> and Ni<sup>2+</sup> with a low affinity (dissociation constants of 26 and 11 μM, respectively) [92], values close to those obtained for the binding of copper to prion proteins (K<sub>D</sub> of 14 μM) [93]. Cu<sup>2+</sup> catalyzed the oxidation of the reduced CP12, with the reformation of disulfide bonds leading to the formation of oxidized CP12, which was able to bind a Cu<sup>2+</sup> ion. In addition, a hydrophobic cluster analysis showed that CP12 had high similarity with copper chaperones from *A. thaliana*. Though many questions remain unanswered, one can hypothesize that CP12 may play a role in copper homeostasis like other copper chaperones [94]. Later, using top-down mass spectrometry, three regions were found to be involved in metal ion binding: Asp16-Asp23, Asp38-Lys50, and Asp70-Glu76 [88]. It has been suggested that the binding of copper led to a more rigid structure, but this requires further investigation. Later, using two-dimensional polyacrylamide gel

electrophoresis separation of the stroma fraction of *A. thaliana* chloroplasts followed by calcium overlay assay, CP12 was identified as a calcium-binding protein [95]. Though this protein does not possess the canonical calcium-binding EF-hand motif, the authors suggested that negatively charged amino acid residues could be involved in this binding. The biological functions of the  $\text{Cu}^{2+}$ ,  $\text{Ni}^{2+}$ , and  $\text{Ca}^{2+}$  binding, however, remain unsolved and need to be further investigated.

## 6. Conclusions

Photosynthesis regulation depends on many signals, including pH, metabolite concentrations, and oxido-reduction conditions. For photosynthesis to be optimized, the signals received have to be transmitted in a rapid and specific manner and often involve protein-protein interactions; IDPs are well suited for such functions. The chloroplast protein, CP12, a redox dependent conditionally disordered protein, acting as a linker or scaffold between PRK and GAPDH, can integrate these multiple signals to regulate their activity. The redox state of CP12 conditions a severe structural transition of its structural properties from a completely disordered state under reducing conditions to a partially stable state under oxidizing conditions. This redox-dependent structural transition is also concomitant with the association-dissociation with PRK and GAPDH enzymes and thus the regulation of their activity under dark (inactive enzymes) or light (active enzymes). The two enzymes, PRK and GAPDH, do not catalyze consecutive reactions but are using ATP and NADPH, respectively, both products from the primary phase of photosynthesis. PRK produces the RuBisCO substrate, ribulose 1,5-bisphosphate, from the ribulose-5-phosphate, an intermediate of the OPP pathway. GAPDH uses NADPH to produce glyceraldehyde-3-phosphate, which can be exported and is also an intermediate of the OPP. Therefore, CP12 using as a regulatory protein of both PRK and GAPDH, thus “killing two birds with one stone”, contributes to the fine tuning of metabolic pathways such as the CBB cycle, the glycolysis, and the OPP, avoiding futile cycling. It is also involved in the regulation of TCA and glyoxylate cycles involving the malate shuttle and possibly involved in CCM. Moreover, besides its role in controlling metabolic pathways, CP12 provides a cell-signaling pathway, triggers anti-stress responses and protects against oxidative damage. It is also able to bind metal ions, though hitherto the biological significance of this remains unknown (Figure 6). The pursuit of knowledge on these disordered proteins will probably produce new concepts in the sciences as the more we learn and the more questions we will find to ask. The discovery of disordered proteins and of CP12, 70 years after the discovery of the CBB cycle, offers new insights into the photosynthesis field, and this is probably not a dead end.



**Figure 6.** Atlas of CP12 functions. The core sequence of CP12, AWD\_VEEL, is in red, and sulfur atoms are indicated in yellow. Reduced CP12 is fully disordered, and oxidized CP12 is partially ordered. Under oxidized state, CP12 forms a supramolecular complex with GAPDH and PRK. A non-exhaustive list of CP12 functions is indicated in the scheme.

**Author Contributions:** B.G., H.L. and C.G., writing—original draft preparation, B.G., H.L., C.G., V.R.-B. and F.C. writing—review and editing. All authors have read and agreed to the published version of the manuscript.

**Funding:** C.G.'s studentship (ED62) is supported by the Ministère de la Recherche, de l'Enseignement supérieur et de l'Innovation. Research from B.G., H.L., F.C. and V.R.-B. is supported by the Centre National de la Recherche Scientifique (CNRS), Aix-Marseille Université, Agence Nationale de la Recherche (ANR-21-CE20-0029) and the Federation of European Biochemical Societies (Launay FEBS Excellence Award, 2021).

**Institutional Review Board Statement:** Not applicable.

**Informed Consent Statement:** Not applicable.

**Data Availability Statement:** Not applicable.

**Acknowledgments:** This work received support from the French government under the France 2030 investment plan, as part of the Initiative d'Excellence d'Aix-Marseille Université—A\*MIDEX and is part of the Institute of Microbiology, Bioenergies, and Biotechnology—IM2B (AMX-19-IET-006).

**Conflicts of Interest:** The authors declare no conflict of interest.

## References

1. Uversky, V.N. Protein Intrinsic Disorder and Structure-Function Continuum. *Prog. Mol. Biol. Transl. Sci.* **2019**, *166*, 1–17. [[CrossRef](#)] [[PubMed](#)]
2. Uversky, V.N. Natively Unfolded Proteins: A Point Where Biology Waits for Physics. *Protein Sci. Publ. Protein Soc.* **2002**, *11*, 739–756. [[CrossRef](#)] [[PubMed](#)]
3. Yruela, I.; Contreras-Moreira, B. Genetic Recombination Is Associated with Intrinsic Disorder in Plant Proteomes. *BMC Genom.* **2013**, *14*, 772. [[CrossRef](#)]
4. Rendón-Luna, D.F.; Romero-Pérez, P.S.; Cuevas-Velazquez, C.L.; Reyes, J.L.; Covarrubias, A.A. Determining the Protective Activity of IDPs Under Partial Dehydration and Freeze-Thaw Conditions. *Methods Mol. Biol.* **2020**, *2141*, 519–528. [[CrossRef](#)]
5. Zhang, Y.; Launay, H.; Schramm, A.; Lebrun, R.; Gontero, B. Exploring Intrinsically Disordered Proteins in *Chlamydomonas reinhardtii*. *Sci. Rep.* **2018**, *8*, 6805. [[CrossRef](#)] [[PubMed](#)]
6. Thieulin-Pardo, G.; Schramm, A.; Lignon, S.; Lebrun, R.; Kojadinovic, M.; Gontero, B. The Intriguing CP12-like Tail of Adenylate Kinase 3 from *Chlamydomonas reinhardtii*. *FEBS J.* **2016**, *283*, 3389–3407. [[CrossRef](#)] [[PubMed](#)]
7. Sena, L.; Uversky, V.N. Comparison of the Intrinsic Disorder Propensities of the RuBisCO Activase Enzyme from the Motile and Non-Motile Oceanic Green Microalgae. *Intrinsically Disord. Proteins* **2016**, *4*, e1253526. [[CrossRef](#)]
8. Launay, H.; Receveur-Bréchet, V.; Carrière, F.; Gontero, B. Orchestration of Algal Metabolism by Protein Disorder. *Arch. Biochem. Biophys.* **2019**, *672*, 108070. [[CrossRef](#)]
9. Gontero, B.; Maberly, S.C. An Intrinsically Disordered Protein, CP12: Jack of All Trades and Master of the Calvin Cycle. *Biochem. Soc. Trans.* **2012**, *40*, 995–999. [[CrossRef](#)]
10. Mackinder, L.C.M.; Meyer, M.T.; Mettler-Altmann, T.; Chen, V.K.; Mitchell, M.C.; Caspari, O.; Rosenzweig, E.S.F.; Pallesen, L.; Reeves, G.; Itakura, A.; et al. A Repeat Protein Links Rubisco to Form the Eukaryotic Carbon-Concentrating Organelle. *Proc. Natl. Acad. Sci. USA* **2016**, *113*, 5958–5963. [[CrossRef](#)]
11. Atkinson, N.; Mao, Y.; Chan, K.X.; McCormick, A.J. Condensation of Rubisco into a Proto-Pyrenoid in Higher Plant Chloroplasts. *Nat. Commun.* **2020**, *11*, 6303. [[CrossRef](#)]
12. He, S.; Chou, H.-T.; Matthies, D.; Wunder, T.; Meyer, M.T.; Atkinson, N.; Martinez-Sanchez, A.; Jeffrey, P.D.; Port, S.A.; Patena, W.; et al. The Structural Basis of Rubisco Phase Separation in the Pyrenoid. *Nat. Plants* **2020**, *6*, 1480–1490. [[CrossRef](#)] [[PubMed](#)]
13. Wunder, T.; Cheng, S.L.H.; Lai, S.-K.; Li, H.-Y.; Mueller-Cajar, O. The Phase Separation Underlying the Pyrenoid-Based Microalgal Rubisco Supercharger. *Nat. Commun.* **2018**, *9*, 5076. [[CrossRef](#)] [[PubMed](#)]
14. Mackinder, L.C.M.; Chen, C.; Leib, R.D.; Patena, W.; Blum, S.R.; Rodman, M.; Ramundo, S.; Adams, C.M.; Jonikas, M.C. A Spatial Interactome Reveals the Protein Organization of the Algal CO<sub>2</sub>-Concentrating Mechanism. *Cell* **2017**, *171*, 133–147.e14. [[CrossRef](#)] [[PubMed](#)]
15. Pohlmeier, K.; Paap, B.K.; Soll, J.; Wedel, N. CP12: A Small Nuclear-Encoded Chloroplast Protein Provides Novel Insights into Higher-Plant GAPDH Evolution. *Plant Mol. Biol.* **1996**, *32*, 969–978. [[CrossRef](#)]
16. Wedel, N.; Soll, J.; Paap, B.K. CP12 Provides a New Mode of Light Regulation of Calvin Cycle Activity in Higher Plants. *Proc. Natl. Acad. Sci. USA* **1997**, *94*, 10479–10484. [[CrossRef](#)] [[PubMed](#)]
17. Gontero, B.; Cardenas, M.L.; Ricard, J. A Functional Five-Enzyme Complex of Chloroplasts Involved in the Calvin Cycle. *Eur. J. Biochem.* **1988**, *173*, 437–443. [[CrossRef](#)]
18. Gontero, B.; Mulliert, G.; Rault, M.; Giudici-Ortoniconi, M.-T.; Ricard, J. Structural and Functional Properties of a Multi-Enzyme Complex from Spinach Chloroplasts. II: Modulation of the Kinetic Properties of Enzymes in the Aggregated State. *Eur. J. Biochem.* **1993**, *217*, 1075–1082. [[CrossRef](#)]

19. Rault, M.; Gontero, B.; Ricard, J. Thioredoxin Activation of Phosphoribulokinase in a Chloroplast Multi-Enzyme Complex. *Eur. J. Biochem.* **1991**, *197*, 791–797. [[CrossRef](#)]
20. Avilan, L.; Gontero, B.; Lebreton, S.; Ricard, J. Memory and Imprinting Effects in Multienzyme Complexes. *Eur. J. Biochem.* **1997**, *246*, 78–84. [[CrossRef](#)]
21. Avilan, L.; Gontero, B.; Lebreton, S.; Ricard, J. Information Transfer in Multienzyme Complexes.2. The Role of Arg64 of *Chlamydomonas reinhardtii* Phosphoribulokinase in the Information Transfer between Glyceraldehyde-3-Phosphate Dehydrogenase and Phosphoribulokinase. *Eur. J. Biochem.* **1997**, *250*, 296–302. [[CrossRef](#)]
22. Lebreton, S.; Gontero, B.; Avilan, L.; Ricard, J. Memory and Imprinting Effects in Multienzyme Complexes.2. Kinetics of the Bienzyme Complex from *Chlamydomonas reinhardtii* and Hysteretic Activation of Chloroplast Oxidized Phosphoribulokinase. *Eur. J. Biochem.* **1997**, *246*, 85–91. [[CrossRef](#)] [[PubMed](#)]
23. Lebreton, S.; Gontero, B.; Avilan, L.; Ricard, J. Information Transfer in Multienzyme Complexes.1. Thermodynamics of Conformational Constraints and Memory Effects in the Bienzyme Glyceraldehyde-3-Phosphate-Dehydrogenase-Phosphoribulokinase Complex of *Chlamydomonas reinhardtii* Chloroplasts. *Eur. J. Biochem.* **1997**, *250*, 286–295. [[CrossRef](#)] [[PubMed](#)]
24. Graciet, E.; Lebreton, S.; Camadro, J.-M.; Gontero, B. Characterization of Native and Recombinant A4 Glyceraldehyde 3-Phosphate Dehydrogenase. Kinetic Evidence for Conformation Changes upon Association with the Small Protein CP12. *Eur. J. Biochem.* **2003**, *270*, 129–136. [[CrossRef](#)] [[PubMed](#)]
25. Graciet, E.; Gans, P.; Wedel, N.; Lebreton, S.; Camadro, J.-M.; Gontero, B. The Small Protein CP12: A Protein Linker for Supramolecular Complex Assembly. *Biochemistry* **2003**, *42*, 8163–8170. [[CrossRef](#)] [[PubMed](#)]
26. Mouche, F.; Gontero, B.; Callebaut, I.; Mornon, J.P.; Boisset, N. Striking Conformational Change Suspected within the Phosphoribulokinase Dimer Induced by Interaction with GAPDH. *J. Biol. Chem.* **2002**, *277*, 6743–6749. [[CrossRef](#)] [[PubMed](#)]
27. Graciet, E.; Lebreton, S.; Camadro, J.-M.; Gontero, B. Thermodynamic Analysis of the Emergence of New Regulatory Properties in a Phosphoribulokinase–Glyceraldehyde 3-Phosphate Dehydrogenase Complex. *J. Biol. Chem.* **2002**, *277*, 12697–12702. [[CrossRef](#)] [[PubMed](#)]
28. Wedel, N.; Soll, J. Evolutionary Conserved Light Regulation of Calvin Cycle Activity by NADPH-Mediated Reversible Phosphoribulokinase/CP12/Glyceraldehyde-3-Phosphate Dehydrogenase Complex Dissociation. *Proc. Natl. Acad. Sci. USA* **1998**, *95*, 9699–9704. [[CrossRef](#)] [[PubMed](#)]
29. Scheibe, R.; Wedel, N.; Vetter, S.; Emmerlich, V.; Sauer mann, S.M. Co-Existence of Two Regulatory NADP-Glyceraldehyde 3-P Dehydrogenase Complexes in Higher Plant Chloroplasts. *Eur. J. Biochem.* **2002**, *269*, 5617–5624. [[CrossRef](#)]
30. Howard, T.P.; Lloyd, J.C.; Raines, C.A. Inter-Species Variation in the Oligomeric States of the Higher Plant Calvin Cycle Enzymes Glyceraldehyde-3-Phosphate Dehydrogenase and Phosphoribulokinase. *J. Exp. Bot.* **2011**, *62*, 3799–3805. [[CrossRef](#)]
31. Clasper, S.; Easterby, J.S.; Powls, R. Properties of Two High-Molecular-Mass Forms of Glyceraldehyde-3-Phosphate Dehydrogenase from Spinach Leaf, One of Which Also Possesses Latent Phosphoribulokinase Activity. *Eur. J. Biochem.* **1991**, *202*, 1239–1246. [[CrossRef](#)] [[PubMed](#)]
32. Wara-Aswapati, O.; Kemble, R.J.; Bradbeer, J.W. Activation of Glyceraldehyde-Phosphate Dehydrogenase (NADP) and Phosphoribulokinase in *Phaseolus vulgaris* Leaf Extracts Involves the Dissociation of Oligomers. *Plant Physiol.* **1980**, *66*, 34–39. [[CrossRef](#)] [[PubMed](#)]
33. Marri, L.; Trost, P.; Trivelli, X.; Gonnelli, L.; Pupillo, P.; Sparla, F. Spontaneous Assembly of Photosynthetic Supramolecular Complexes as Mediated by the Intrinsically Unstructured Protein CP12. *J. Biol. Chem.* **2008**, *283*, 1831–1838. [[CrossRef](#)] [[PubMed](#)]
34. Kaaki, W.; Woudstra, M.; Gontero, B.; Halgand, F. Exploration of CP12 Conformational Changes and of Quaternary Structural Properties Using Electrospray Ionization Traveling Wave Ion Mobility Mass Spectrometry. *Rapid Commun. Mass Spectrom.* **2013**, *27*, 179–186. [[CrossRef](#)]
35. Erales, J.; Mekhalfi, M.; Woudstra, M.; Gontero, B. Molecular Mechanism of NADPH-Glyceraldehyde-3-Phosphate Dehydrogenase Regulation through the C-Terminus of CP12 in *Chlamydomonas reinhardtii*. *Biochemistry* **2011**, *50*, 2881–2888. [[CrossRef](#)]
36. Wright, P.E.; Dyson, H.J. Intrinsically Unstructured Proteins: Re-Assessing the Protein Structure-Function Paradigm. *J. Mol. Biol.* **1999**, *293*, 321–331. [[CrossRef](#)]
37. Dyson, H.J.; Wright, P.E. Coupling of Folding and Binding for Unstructured Proteins. *Curr. Opin. Struct. Biol.* **2002**, *12*, 54–60. [[CrossRef](#)]
38. Tompa, P. Intrinsically Unstructured Proteins. *Trends Biochem. Sci.* **2002**, *27*, 527–533. [[CrossRef](#)]
39. Moparthy, S.B.; Thieulin-Pardo, G.; Mansuelle, P.; Rigneault, H.; Gontero, B.; Wenger, J. Conformational Modulation and Hydrodynamic Radii of CP12 Protein and Its Complexes Probed by Fluorescence Correlation Spectroscopy. *FEBS J.* **2014**, *281*, 3206–3217. [[CrossRef](#)]
40. Vacic, V.; Uversky, V.N.; Dunker, A.K.; Lonardi, S. Composition Profiler: A Tool for Discovery and Visualization of Amino Acid Composition Differences. *BMC Bioinform.* **2007**, *8*, 211. [[CrossRef](#)]
41. Launay, H.; Barré, P.; Puppo, C.; Manneville, S.; Gontero, B.; Receveur-Bréchet, V. Absence of Residual Structure in the Intrinsically Disordered Regulatory Protein CP12 in Its Reduced State. *Biochem. Biophys. Res. Commun.* **2016**, *477*, 20–26. [[CrossRef](#)] [[PubMed](#)]
42. Moparthy, S.B.; Thieulin-Pardo, G.; de Torres, J.; Ghenuche, P.; Gontero, B.; Wenger, J. FRET Analysis of CP12 Structural Interplay by GAPDH and PRK. *Biochem. Biophys. Res. Commun.* **2015**, *458*, 488–493. [[CrossRef](#)] [[PubMed](#)]
43. Gardebien, F.; Thangudu, R.R.; Gontero, B.; Offmann, B. Construction of a 3D Model of CP12, a Protein Linker. *J. Mol. Graph. Model.* **2006**, *25*, 186–195. [[CrossRef](#)] [[PubMed](#)]

44. Launay, H.; Barré, P.; Puppo, C.; Zhang, Y.; Maneville, S.; Gontero, B.; Receveur-Bréchot, V. Cryptic Disorder Out of Disorder: Encounter between Conditionally Disordered CP12 and Glyceraldehyde-3-Phosphate Dehydrogenase. *J. Mol. Biol.* **2018**, *430*, 1218–1234. [[CrossRef](#)] [[PubMed](#)]
45. Receveur-Brechot, V.; Durand, D. How Random Are Intrinsically Disordered Proteins? A Small Angle Scattering Perspective. *Curr. Protein Pept. Sci.* **2012**, *13*, 55–75. [[CrossRef](#)] [[PubMed](#)]
46. Reichmann, D.; Jakob, U. The Roles of Conditional Disorder in Redox Proteins. *Curr. Opin. Struct. Biol.* **2013**, *23*, 436–442. [[CrossRef](#)] [[PubMed](#)]
47. McFarlane, C.R.; Shah, N.R.; Kabasakal, B.V.; Echeverria, B.; Cotton, C.A.R.; Bubeck, D.; Murray, J.W. Structural Basis of Light-Induced Redox Regulation in the Calvin-Benson Cycle in Cyanobacteria. *Proc. Natl. Acad. Sci. USA* **2019**, *116*, 20984–20990. [[CrossRef](#)] [[PubMed](#)]
48. Yu, A.; Xie, Y.; Pan, X.; Zhang, H.; Cao, P.; Su, X.; Chang, W.; Li, M. Photosynthetic Phosphoribulokinase Structures: Enzymatic Mechanisms and the Redox Regulation of the Calvin-Benson-Bassham Cycle. *Plant Cell* **2020**, *32*, 1556–1573. [[CrossRef](#)]
49. Matsumura, H.; Kai, A.; Maeda, T.; Tamoi, M.; Satoh, A.; Tamura, H.; Hirose, M.; Ogawa, T.; Kizu, N.; Wadano, A.; et al. Structure Basis for the Regulation of Glyceraldehyde-3-Phosphate Dehydrogenase Activity via the Intrinsically Disordered Protein CP12. *Structure* **2011**, *19*, 1846–1854. [[CrossRef](#)]
50. Trost, P.; Fermani, S.; Marri, L.; Zaffagnini, M.; Falini, G.; Scagliarini, S.; Pupillo, P.; Sparla, F. Thioredoxin-Dependent Regulation of Photosynthetic Glyceraldehyde-3-Phosphate Dehydrogenase: Autonomous vs. CP12-Dependent Mechanisms. *Photosynth. Res.* **2006**, *89*, 263–275. [[CrossRef](#)]
51. Erdős, G.; Mészáros, B.; Reichmann, D.; Dosztányi, Z. Large-Scale Analysis of Redox-Sensitive Conditionally Disordered Protein Regions Reveals Their Widespread Nature and Key Roles in High-Level Eukaryotic Processes. *Proteomics* **2019**, *19*, e1800070. [[CrossRef](#)] [[PubMed](#)]
52. Bhopatkar, A.A.; Uversky, V.N.; Rangachari, V. Disorder and Cysteines in Proteins: A Design for Orchestration of Conformational See-Saw and Modulatory Functions. *Prog. Mol. Biol. Transl. Sci.* **2020**, *174*, 331–373. [[CrossRef](#)] [[PubMed](#)]
53. Lopez-Calcagno, P.E.; Howard, T.P.; Raines, C.A. The CP12 Protein Family: A Thioredoxin-Mediated Metabolic Switch? *Front. Plant Sci.* **2014**, *5*, 9. [[CrossRef](#)] [[PubMed](#)]
54. Groben, R.; Kaloudas, D.; Raines, C.A.; Offmann, B.; Maberly, S.C.; Gontero, B. Comparative Sequence Analysis of CP12, a Small Protein Involved in the Formation of a Calvin Cycle Complex in Photosynthetic Organisms. *Photosynth. Res.* **2010**, *103*, 183–194. [[CrossRef](#)] [[PubMed](#)]
55. Avilan, L.; Puppo, C.; Eroles, J.; Woudstra, M.; Lebrun, R.; Gontero, B. CP12 Residues Involved in the Formation and Regulation of the Glyceraldehyde-3-Phosphate Dehydrogenase–CP12–Phosphoribulokinase Complex in *Chlamydomonas reinhardtii*. *Mol. Biosyst.* **2012**, *8*, 2994. [[CrossRef](#)] [[PubMed](#)]
56. Oesterhelt, C.; Klocke, S.; Holtgreffe, S.; Linke, V.; Weber, A.P.M.; Scheibe, R. Redox Regulation of Chloroplast Enzymes in *Galdieria sulphuraria* in View of Eukaryotic Evolution. *Plant Cell Physiol.* **2007**, *48*, 1359–1373. [[CrossRef](#)] [[PubMed](#)]
57. Tamoi, M.; Miyazaki, T.; Fukamizo, T.; Shigeoka, S. The Calvin Cycle in Cyanobacteria Is Regulated by CP12 via the NAD(H)/NADP(H) Ratio under Light/Dark Conditions. *Plant J.* **2005**, *42*, 504–513. [[CrossRef](#)]
58. Stanley, D.N.; Raines, C.A.; Kerfeld, C.A. Comparative Analysis of 126 Cyanobacterial Genomes Reveals Evidence of Functional Diversity among Homologs of the Redox-Regulated CP12 Protein. *Plant Physiol.* **2013**, *161*, 824–835. [[CrossRef](#)] [[PubMed](#)]
59. Mekhalfi, M.; Puppo, C.; Avilan, L.; Lebrun, R.; Mansuelle, P.; Maberly, S.C.; Gontero, B. Glyceraldehyde-3-Phosphate Dehydrogenase Is Regulated by Ferredoxin-NADP Reductase in the Diatom *Asterionella formosa*. *New Phytol.* **2014**, *203*, 414–423. [[CrossRef](#)]
60. Boggetto, N.; Gontero, B.; Maberly, S.C. Regulation of Phosphoribulokinase and Glyceraldehyde 3-Phosphate Dehydrogenase in a Freshwater Diatom, *Asterionella formosa*. *J. Phycol.* **2007**, *43*, 1227–1235. [[CrossRef](#)]
61. Shao, H.; Huang, W.; Avilan, L.; Receveur-Bréchot, V.; Puppo, C.; Puppo, R.; Lebrun, R.; Gontero, B.; Launay, H. A New Type of Flexible CP12 Protein in the Marine Diatom *Thalassiosira pseudonana*. *Cell Commun. Signal. CCS* **2021**, *19*, 38. [[CrossRef](#)] [[PubMed](#)]
62. Wilhelm, C.; Büchel, C.; Fisahn, J.; Goss, R.; Jakob, T.; Laroche, J.; Lavaud, J.; Lohr, M.; Riebesell, U.; Stehfest, K.; et al. The Regulation of Carbon and Nutrient Assimilation in Diatoms Is Significantly Different from Green Algae. *Protist* **2006**, *157*, 91–124. [[CrossRef](#)] [[PubMed](#)]
63. Thieulin-Pardo, G.; Remy, T.; Lignon, S.; Lebrun, R.; Gontero, B. Phosphoribulokinase from *Chlamydomonas reinhardtii*: A Benson-Calvin Cycle Enzyme Enslaved to Its Cysteine Residues. *Mol. Biosyst.* **2015**, *11*, 1134–1145. [[CrossRef](#)] [[PubMed](#)]
64. Thompson, L.R.; Zeng, Q.; Kelly, L.; Huang, K.H.; Singer, A.U.; Stubbe, J.; Chisholm, S.W. Phage Auxiliary Metabolic Genes and the Redirection of Cyanobacterial Host Carbon Metabolism. *Proc. Natl. Acad. Sci. USA* **2011**, *108*, E757–E764. [[CrossRef](#)]
65. Zhang, Y.; Launay, H.; Liu, F.; Lebrun, R.; Gontero, B. Interaction between Adenylate Kinase 3 and Glyceraldehyde-3-phosphate Dehydrogenase from *Chlamydomonas reinhardtii*. *FEBS J.* **2018**, *285*, 2495–2503. [[CrossRef](#)]
66. Marri, L.; Pesaresi, A.; Valerio, C.; Lamba, D.; Pupillo, P.; Trost, P.; Sparla, F. In Vitro Characterization of Arabidopsis CP12 Isoforms Reveals Common Biochemical and Molecular Properties. *J. Plant Physiol.* **2010**, *167*, 939–950. [[CrossRef](#)]
67. Robbens, S.; Petersen, J.; Brinkmann, H.; Rouzé, P.; Van de Peer, Y. Unique Regulation of the Calvin Cycle in the Ultrasmall Green Alga *Ostreococcus*. *J. Mol. Evol.* **2007**, *64*, 601–604. [[CrossRef](#)]
68. Sun, Q.; Zybailov, B.; Majeran, W.; Friso, G.; Olinares, P.D.B.; van Wijk, K.J. PPDB, the Plant Proteomics Database at Cornell. *Nucleic Acids Res.* **2009**, *37*, D969–D974. [[CrossRef](#)]

69. Marquardt, A.; Henry, R.J.; Botha, F.C. Effect of Sugar Feedback Regulation on Major Genes and Proteins of Photosynthesis in Sugarcane Leaves. *Plant Physiol. Biochem. PPB* **2021**, *158*, 321–333. [[CrossRef](#)]
70. Cortese, M.S.; Uversky, V.N.; Keith Dunker, A. Intrinsic Disorder in Scaffold Proteins: Getting More from Less. *Prog. Biophys. Mol. Biol.* **2008**, *98*, 85–106. [[CrossRef](#)]
71. Marri, L.; Zaffagnini, M.; Collin, V.; Issakidis-Bourguet, E.; Lemaire, S.D.; Pupillo, P.; Sparla, F.; Miginiac-Maslow, M.; Trost, P. Prompt and Easy Activation by Specific Thioredoxins of Calvin Cycle Enzymes of *Arabidopsis thaliana* Associated in the GAPDH/CP12/PRK Supramolecular Complex. *Mol. Plant* **2009**, *2*, 259–269. [[CrossRef](#)] [[PubMed](#)]
72. Yoshida, K.; Hara, A.; Sugiura, K.; Fukaya, Y.; Hisabori, T. Thioredoxin-Like2/2-Cys Peroxiredoxin Redox Cascade Supports Oxidative Thiol Modulation in Chloroplasts. *Proc. Natl. Acad. Sci. USA* **2018**, *115*, E8296–E8304. [[CrossRef](#)] [[PubMed](#)]
73. Avilan, L.; Lebreton, S.; Gontero, B. Thioredoxin Activation of Phosphoribulokinase in a Bi-Enzyme Complex from *Chlamydomonas reinhardtii* Chloroplasts. *J. Biol. Chem.* **2000**, *275*, 9447–9451. [[CrossRef](#)] [[PubMed](#)]
74. Marri, L.; Trost, P.; Pupillo, P.; Sparla, F. Reconstitution and Properties of the Recombinant Glyceraldehyde-3-Phosphate Dehydrogenase/CP12/Phosphoribulokinase Supramolecular Complex of Arabidopsis. *Plant Physiol.* **2005**, *139*, 1433–1443. [[CrossRef](#)] [[PubMed](#)]
75. Terzaghi, W.B.; Cashmore, A.R. Light-Regulated Transcription. *Annu. Rev. Plant Physiol Plant Mol. Biol.* **1995**, *46*, 445–474. [[CrossRef](#)]
76. Elena López-Calcagno, P.; Omar Abuzaid, A.; Lawson, T.; Anne Raines, C. Arabidopsis CP12 Mutants Have Reduced Levels of Phosphoribulokinase and Impaired Function of the Calvin-Benson Cycle. *J. Exp. Bot.* **2017**, *68*, 2285–2298. [[CrossRef](#)] [[PubMed](#)]
77. Gérard, C.; Lebrun, R.; Lemesle, E.; Avilan, L.; Chang, K.S.; Jin, E.; Carrière, F.; Gontero, B.; Launay, H. Reduction in Phosphoribulokinase Amount and Re-Routing Metabolism in *Chlamydomonas reinhardtii* CP12 Mutants. *Int. J. Mol. Sci.* **2022**, *23*, 2710. [[CrossRef](#)]
78. Howard, T.P.; Fryer, M.J.; Singh, P.; Metodiev, M.; Lytovchenko, A.; Obata, T.; Fernie, A.R.; Kruger, N.J.; Quick, W.P.; Lloyd, J.C.; et al. Antisense Suppression of the Small Chloroplast Protein CP12 in Tobacco Alters Carbon Partitioning and Severely Restricts Growth. *Plant Physiol.* **2011**, *157*, 620–631. [[CrossRef](#)] [[PubMed](#)]
79. Howard, T.P.; Upton, G.J.G.; Lloyd, J.C.; Raines, C.A. Antisense Suppression of the Small Chloroplast Protein CP12 in Tobacco: A Transcriptional Viewpoint. *Plant Signal. Behav.* **2011**, *6*, 2026–2030. [[CrossRef](#)]
80. Li, K.; Qiu, H.; Zhou, M.; Lin, Y.; Guo, Z.; Lu, S. Chloroplast Protein 12 Expression Alters Growth and Chilling Tolerance in Tropical Forage *Stylosanthes guianensis* (Aublet) Sw. *Front. Plant Sci.* **2018**, *9*, 1319. [[CrossRef](#)]
81. Erales, J.; Avilan, L.; Lebreton, S.; Gontero, B. Exploring CP12 Binding Proteins Revealed Aldolase as a New Partner for the Phosphoribulokinase/Glyceraldehyde 3-Phosphate Dehydrogenase/CP12 Complex—Purification and Kinetic Characterization of This Enzyme from *Chlamydomonas reinhardtii*. *FEBS J.* **2008**, *275*, 1248–1259. [[CrossRef](#)] [[PubMed](#)]
82. Burlacot, A.; Dao, O.; Auroy, P.; Cuiné, S.; Li-Beisson, Y.; Peltier, G. Alternative Photosynthesis Pathways Drive the Algal CO<sub>2</sub>-Concentrating Mechanism. *Nature* **2022**, *605*, 366–371. [[CrossRef](#)] [[PubMed](#)]
83. Dao, O.; Kuhnert, F.; Weber, A.P.M.; Peltier, G.; Li-Beisson, Y. Physiological Functions of Malate Shuttles in Plants and Algae. *Trends Plant Sci.* **2022**, *27*, 488–501. [[CrossRef](#)] [[PubMed](#)]
84. Clement, R.; Lignon, S.; Mansuelle, P.; Jensen, E.; Pophillat, M.; Lebrun, R.; Denis, Y.; Puppo, C.; Maberly, S.C.; Gontero, B. Responses of the Marine Diatom *Thalassiosira pseudonana* to Changes in CO<sub>2</sub> Concentration: A Proteomic Approach. *Sci. Rep.* **2017**, *7*, 42333. [[CrossRef](#)]
85. Tamoi, M.; Shigeoka, S. CP12 Is Involved in Protection against High Light Intensity by Suppressing the ROS Generation in *Synechococcus elongatus* PCC7942. *Plants* **2021**, *10*, 1275. [[CrossRef](#)] [[PubMed](#)]
86. Hackenberg, C.; Hakanpää, J.; Cai, F.; Antonyuk, S.; Eigner, C.; Meissner, S.; Laitaoja, M.; Jänis, J.; Kerfeld, C.A.; Dittmann, E.; et al. Structural and Functional Insights into the Unique CBS-CP12 Fusion Protein Family in Cyanobacteria. *Proc. Natl. Acad. Sci. USA* **2018**, *115*, 7141–7146. [[CrossRef](#)] [[PubMed](#)]
87. Marri, L.; Thieulin-Pardo, G.; Lebrun, R.; Puppo, R.; Zaffagnini, M.; Trost, P.; Gontero, B.; Sparla, F. CP12-Mediated Protection of Calvin-Benson Cycle Enzymes from Oxidative Stress. *Biochimie* **2014**, *97*, 228–237. [[CrossRef](#)] [[PubMed](#)]
88. Erales, J.; Lignon, S.; Gontero, B. CP12 from *Chlamydomonas reinhardtii*, a Permanent Specific “Chaperone-like” Protein of Glyceraldehyde-3-Phosphate Dehydrogenase. *J. Biol. Chem.* **2009**, *284*, 12735–12744. [[CrossRef](#)]
89. Chen, X.-H.; Li, Y.-Y.; Zhang, H.; Liu, J.-L.; Xie, Z.-X.; Lin, L.; Wang, D.-Z. Quantitative Proteomics Reveals Common and Specific Responses of a Marine Diatom *Thalassiosira pseudonana* to Different Macronutrient Deficiencies. *Front. Microbiol.* **2018**, *9*, 2761. [[CrossRef](#)] [[PubMed](#)]
90. Banovic Deri, B.; Bozic, M.; Dudic, D.; Vicic, I.; Milivojevic, M.; Ignjatovic-Micic, D.; Samardzic, J.; Vancetovic, J.; Delic, N.; Nikolic, A. Leaf Transcriptome Analysis of Lancaster versus Other Heterotic Groups’ Maize Inbred Lines Revealed Different Regulation of Cold-Responsive Genes. *J. Agron. Crop Sci.* **2022**, *208*, 497–509. [[CrossRef](#)]
91. Bosco, G.L.; Baxa, M.; Sosnick, T.R. Metal Binding Kinetics of Bi-Histidine Sites Used in Psi Analysis: Evidence of High-Energy Protein Folding Intermediates. *Biochemistry* **2009**, *48*, 2950–2959. [[CrossRef](#)] [[PubMed](#)]
92. Delobel, A.; Graciet, E.; Andresescu, S.; Gontero, B.; Halgand, F.; Laprèvote, O. Mass Spectrometric Analysis of the Interactions between CP12, a Chloroplast Protein, and Metal Ions: A Possible Regulatory Role within a PRK/GAPDH/CP12 Complex. *Rapid Commun. Mass Spectrom.* **2005**, *19*, 3379–3388. [[CrossRef](#)] [[PubMed](#)]



93. Stöckel, J.; Safar, J.; Wallace, A.C.; Cohen, F.E.; Prusiner, S.B. Prion Protein Selectively Binds Copper(II) Ions. *Biochemistry* **1998**, *37*, 7185–7193. [[CrossRef](#)] [[PubMed](#)]
94. Himmelblau, E.; Mira, H.; Lin, S.J.; Culotta, V.C.; Peñarrubia, L.; Amasino, R.M. Identification of a Functional Homolog of the Yeast Copper Homeostasis Gene ATX1 from Arabidopsis. *Plant Physiol.* **1998**, *117*, 1227–1234. [[CrossRef](#)]
95. Rocha, A.G.; Vothknecht, U.C. Identification of CP12 as a Novel Calcium-Binding Protein in Chloroplasts. *Plants* **2013**, *2*, 530–540. [[CrossRef](#)]