



## Weaning of maintenance immunosuppressive therapy in lupus nephritis (WIN-Lupus): results of a multicentre randomised controlled trial

Noemie Jourde-Chiche, Nathalie Costedoat-Chalumeau, Karine Baumstarck, Anderson Loundou, Laurence Bouillet, Stéphane Burtey, Valérie Caudwell, Laurent Chiche, Lionel Couzi, Laurent Daniel, et al.

### ► To cite this version:

Noemie Jourde-Chiche, Nathalie Costedoat-Chalumeau, Karine Baumstarck, Anderson Loundou, Laurence Bouillet, et al.. Weaning of maintenance immunosuppressive therapy in lupus nephritis (WIN-Lupus): results of a multicentre randomised controlled trial. *Annals of the Rheumatic Diseases*, 2022, 81 (10), pp.1420-1427. 10.1136/annrheumdis-2022-222435 . hal-03800914

**HAL Id: hal-03800914**

**<https://amu.hal.science/hal-03800914>**

Submitted on 16 Nov 2023

**HAL** is a multi-disciplinary open access archive for the deposit and dissemination of scientific research documents, whether they are published or not. The documents may come from teaching and research institutions in France or abroad, or from public or private research centers.

L'archive ouverte pluridisciplinaire **HAL**, est destinée au dépôt et à la diffusion de documents scientifiques de niveau recherche, publiés ou non, émanant des établissements d'enseignement et de recherche français ou étrangers, des laboratoires publics ou privés.



Distributed under a Creative Commons Attribution 4.0 International License



OPEN ACCESS

## CLINICAL SCIENCE

## Weaning of maintenance immunosuppressive therapy in lupus nephritis (WIN-Lupus): results of a multicentre randomised controlled trial

Noemie Jourde-Chiche ,<sup>2,1</sup> Nathalie Costedoat-Chalumeau ,<sup>4,3</sup> Karine Baumstarck,<sup>5</sup> Anderson Loundou,<sup>5</sup> Laurence Bouillet,<sup>6</sup> Stéphane Burtey,<sup>1,2</sup> Valérie Caudwell,<sup>7</sup> Laurent Chiche,<sup>8</sup> Lionel Couzi,<sup>9</sup> Laurent Daniel,<sup>1,10</sup> Christophe Deligny,<sup>11</sup> Bertrand Dussol,<sup>2,12</sup> Stanislas Faguer ,<sup>13</sup> Pierre Gobert,<sup>14</sup> Guillaume Gondran,<sup>15</sup> Antoine Huart,<sup>13</sup> Aurélie Hummel,<sup>16</sup> Emilie Kalbacher,<sup>17</sup> Adexandre Karras,<sup>18,19</sup> Marc Lambert,<sup>20</sup> Véronique Le Guern,<sup>21</sup> Ludivine Lebourg,<sup>22</sup> Sandrine Loubière,<sup>23</sup> Hélène Maillard-Lefebvre,<sup>24</sup> François Maurier,<sup>25</sup> Micheline Pha,<sup>26</sup> Viviane Queyrel,<sup>27</sup> Philippe Remy,<sup>28</sup> Françoise Sarrot-Reynauld,<sup>29</sup> David Verhelst,<sup>14</sup> Eric Hachulla ,<sup>30</sup> Zahir Amoura,<sup>31</sup> Eric Daugas ,<sup>32,33</sup> for the WIN-Lupus study group

**Handling editor** Josef S Smolen

► Additional supplemental material is published online only. To view, please visit the journal online (<http://dx.doi.org/10.1136/annrheumdis-2022-222435>).

For numbered affiliations see end of article.

**Correspondence to**

Professor Noemie Jourde-Chiche, C2VN, INSERM, INRAE, Aix-Marseille Université, Marseille, Provence-Alpes-Côte d'Azur, France; [noemie.jourde@ap-hm.fr](mailto:noemie.jourde@ap-hm.fr)

Received 6 March 2022  
Accepted 7 June 2022  
Published Online First 20 June 2022



© Author(s) (or their employer(s)) 2022. Re-use permitted under CC BY-NC. No commercial re-use. See rights and permissions. Published by BMJ.

**To cite:** Jourde-Chiche N, Costedoat-Chalumeau N, Baumstarck K, *et al.* *Ann Rheum Dis* 2022;**81**:1420–1427.

**ABSTRACT**

**Objectives** Lupus nephritis (LN) is a frequent complication of systemic lupus erythematosus (SLE). Severe (proliferative) forms of LN are treated with induction immunosuppressive therapy (IST), followed by maintenance IST, to target remission and avoid relapses. The optimal duration of maintenance IST is unknown. The WIN-Lupus trial tested whether IST discontinuation after 2–3 years was non-inferior to IST continuation for two more years in proliferative LN.

**Methods** WIN-Lupus was an investigator-initiated multicentre randomised controlled trial. Patients receiving maintenance IST with azathioprine or mycophenolate mofetil for 2–3 years, and hydroxychloroquine, were randomised (1:1) into two groups: (1) IST continuation and (2) IST discontinuation. The primary endpoint was the relapse rate of proliferative LN at 24 months. Main secondary endpoints were the rate of severe SLE flares, survival without renal relapse or severe flare, adverse events.

**Results** Between 2011 and 2016, 96 patients (out of 200 planned) were randomised in WIN-Lupus: IST continuation group (n=48), IST discontinuation group (n=48). Relapse of proliferative LN occurred in 5/40 (12.5%) patients with IST continuation and in 12/44 (27.3%) patients with IST discontinuation (difference 14.8% (95% CI –1.9 to 31.5)). Non-inferiority was not demonstrated for relapse rate; time to relapse did not differ between the groups. Severe SLE flares (renal or extrarenal) were less frequent in patients with IST continuation (5/40 vs 14/44 patients; p=0.035). Adverse events did not differ between the groups.

**Conclusions** Non-inferiority of maintenance IST discontinuation after 2–3 years was not demonstrated for renal relapse. IST discontinuation was associated with a higher risk of severe SLE flares.

**Trial registration number** NCT01284725.

**INTRODUCTION**

Lupus nephritis (LN) is a frequent and severe manifestation of systemic lupus erythematosus (SLE).<sup>1</sup> Although the prognosis of LN has improved,

**WHAT IS ALREADY KNOWN ON THIS TOPIC**

⇒ Proliferative lupus nephritis (LN) can lead to renal failure. In patients with LN, after the induction phase of immunosuppressive therapy (IST), maintenance IST aims to prevent LN relapses. The optimal duration of maintenance IST, to reduce the risk of relapse while minimising treatment-related adverse events, is unknown.

**WHAT THIS STUDY ADDS**

⇒ WIN-Lupus is the first randomised controlled trial comparing maintenance IST discontinuation versus maintenance IST continuation in proliferative LN. WIN-Lupus tested the non-inferiority of maintenance IST discontinuation after 2–3 years, compared with its continuation for two more years, in proliferative LN. Non-inferiority was not demonstrated and patients who discontinued IST had a higher risk of severe flares of lupus. However, the majority of patients who discontinued IST did not experience a flare.

**HOW THIS STUDY MIGHT AFFECT RESEARCH, PRACTICE AND/OR POLICY**

⇒ Instead of prolonging maintenance IST for all patients with proliferative LN, our results call for the development of tailored strategies, possibly involving repeat biopsy, to identify patients who can be safely weaned off maintenance IST.

substantial morbidity, partly related to treatment, is still observed.<sup>2–5</sup> The therapeutic strategy relies on pathological classification of renal lesions.<sup>6,7</sup> In patients with proliferative LN (class III or IV with active lesions, with or without associated class V,

according to the ISN/RPS 2003),<sup>7</sup> the treatment relies on two consecutive phases: (1) induction phase and (2) maintenance phase. The aim of induction therapy is to control renal inflammation and ideally achieve renal remission; the aim of maintenance treatment is to complete renal remission and prevent renal relapses. Gold-standard maintenance therapy is either mycophenolate mofetil or azathioprine, and progressive discontinuation of low-dose corticosteroids.<sup>6</sup> The addition or continuation of an antimalarial drug is also required.<sup>6</sup> Renal relapses nevertheless occur in 15–43% of patients after 3 years,<sup>8–10</sup> and 10%–20% of patients reach end-stage kidney disease (ESKD) after 10 years.<sup>9–11</sup> The optimal duration of immunosuppressive therapy (IST) in proliferative LN is unknown and the possibility of discontinuing IST in patients in remission is still open to debate.<sup>3 4 12–14</sup> While IST reduction or discontinuation before 18 months appears to be associated with a high risk of relapse,<sup>15</sup> with subsequent organ damage, long-term continuation of IST could be associated with higher rates of adverse events such as cardiovascular events, infections and malignancy.<sup>2</sup>

No randomised controlled trial (RCT) to date has prospectively assessed the possibility of maintenance IST withdrawal in proliferative LN. The hypothesis of the WIN-Lupus trial was that discontinuation of maintenance IST after 2–3 years in patients with proliferative LN who had been in remission for at least 1 year, and who were taking hydroxychloroquine, would be non-inferior to IST continuation for two more years in terms of renal relapse. The primary objective was to demonstrate non-inferiority of IST discontinuation in terms of renal relapse at 24 months. The main secondary objectives were to identify the risk factors for renal relapse and to demonstrate non-inferiority of IST discontinuation in terms of severe SLE flares (renal or extrarenal).

## METHODS

### Study design and participants

WIN-Lupus was a multicentre, two parallel-arms, randomised, non-inferiority trial conducted between February 2011 and December 2018, in 28 centres in France. The study design is described in online supplemental figure 1.

The following inclusion criteria were required: age  $\geq 18$  years, meeting at least 4/11 SLE classification criteria of the American College of Rheumatology (ACR),<sup>16</sup> first flare or relapse of biopsy-proven proliferative LN (ISN/RPS 2003),<sup>7</sup> induction treatment with high-dose corticosteroids and intravenous cyclophosphamide or mycophenolate mofetil, current maintenance IST with either azathioprine ( $\geq 50$  mg/day) or mycophenolate mofetil ( $\geq 1000$  mg/day or mycophenolate sodium  $\geq 720$  mg/day) for at least 2 years and a maximum of 3 years, patient in complete (proteinuria  $\leq 0.2$  g/day) or partial (proteinuria  $\leq 0.5$  g/day, or stable and considered to be related to chronic damage) renal remission, with inactive urinary sediment and normal ( $>90$  mL/min/1.73 m<sup>2</sup>) or stable (no decrease  $>10\%$ ) estimated glomerular filtration rate (eGFR), as defined in the 2009 European consensus criteria,<sup>17</sup> for the past 12 months, current treatment with hydroxychloroquine for  $\geq 2$  months, current prednisone daily dose  $\leq 10$  mg/day, effective contraception in women of childbearing age.

Subjects were excluded from the study if they had any of the following exclusion criteria: eGFR, estimated by the Modification of Diet in Renal Disease study equation,  $<30$  mL/min/1.73 m<sup>2</sup>, pregnancy, lactation, patient wishing to become pregnant in the next 2 years, recent extrarenal flare of SLE (in the past 6 months) that required an increase in corticosteroids to  $>20$  mg/day for at least 7 days.

The trial was conducted in accordance with the principles of the Declaration of Helsinki and the International Conference on Harmonisation Guidelines for Good Clinical Practice, addendum E6. All patients gave their written informed consent before any study-related procedure. The study, which was funded by the French Ministry of Health (PHRC 2010), was registered with the Clinical Trials identifier NCT01284725.

### Groups

The patients were divided into two groups: (1) IST continuation: maintenance IST was continued over the study period and (2) IST discontinuation: maintenance IST was tapered and discontinued over a 3-month period.

In both groups, hydroxychloroquine was continued and baseline low-dose corticosteroids (prednisone  $\leq 10$  mg/day) could be prescribed. Patients were followed up at 1 month (M1), 3 months (M3) and every 3 months thereafter until M24 postrandomisation, unless they were excluded earlier due to renal relapse, severe SLE flare or a severe adverse event.

### Randomisation

Eligible patients were randomly assigned (1:1) to the IST continuation or IST discontinuation group. The method used for randomisation was permuted block randomisation. Randomisation was stratified on a single factor: 'zone'. Three zones were defined: zone 1 including centres in the south of France, zone 2 including centres in the North of France, zone 3 including centres in the Paris region and the French West Indies. The study was not blinded to participants, investigators or data managers.

### Outcomes

The primary efficacy outcome was the percentage of patients with relapse of proliferative LN between randomisation and M24. Renal relapse was suspected in the case of confirmed proteinuria  $>0.5$  g/24 hours, or urinary protein/creatinine ratio (UPCR)  $>0.5$  g/g or doubling of pre-existing proteinuria, and/or recurrence of microscopic hematuria, and/or 25% increase in serum creatinine after elimination of a functional, obstructive or toxic cause. Suspected renal relapse involved a kidney biopsy to confirm (class III or class IV LN with active lesions, with or without associated class V LN) or eliminate relapse of proliferative LN.

The key secondary efficacy outcome was the percentage of patients with a severe SLE flare (renal or extrarenal), defined by the need for induction IST (high-dose steroids  $\geq 0.5$  mg/kg/day and/or induction IST), between randomisation and M24.

Additional secondary outcomes included: overall patient survival, survival without renal relapse, survival without severe SLE flare, adverse events at M24 (comprising renal adverse events defined by an elevation in serum creatinine  $>20\%$ ,  $>50\%$ , or ESKD), extrarenal SLE activity between M0 and M24 evaluated by the SLE Disease Activity Index (SELENA-SLEDAI),<sup>18</sup> overall exposure to corticosteroids (mean daily dose at each visit) between M0 and M24, hydroxychloroquine blood levels, health-related quality of life (QoL) (The Short Form 36 Health Survey, SF-36) and medicoeconomic impact.

### Statistical analysis

WIN-Lupus was designed as a non-inferiority trial. Non-inferiority of IST discontinuation versus continuation would be concluded if the lower limit of the 95% CI for the between-group difference was  $<15\%$  for the primary outcome. At a 5% significance level, 80% statistical power and a 10% lost to follow-up

or exclusion, 100 patients per group were needed (total: 200). No interim analysis was planned.

Statistical significance was defined as  $p < 0.05$ . The methodology was based on the extension of Consolidated Standards of Reporting Trials Statement for reporting of non-inferiority RCTs.<sup>19</sup>

For the primary outcome, the main analysis was performed on the per-protocol (PP) population and in the intention-to-treat (ITT) population.<sup>20 21</sup> Non-inferiority would be concluded if the lower limit of the 95% CI for the between-group difference (discontinuation minus continuation) was  $< 15\%$  renal relapses (primary analysis) in the two sets. In the case of non-significance, superiority would be tested. Renal relapse was expressed as number and percentage for each group, and as the difference D (discontinuation minus continuation) and 95% CI. For the primary outcome, survival estimates were calculated according to the Kaplan-Meier method and compared using the log-rank test.

The secondary outcomes were compared between the two groups using the  $\chi^2$  test or Fisher's exact test for binary variables, and the Student's t-test for continuous variables. Evolution of the SLEDAI, exposure to corticosteroids, QoL, serum creatinine and blood hydroxychloroquine levels were compared between the two groups over the 2-year follow-up period. Risk factors for relapse were assessed by univariate analysis.

A cost analysis was also performed in which total costs were estimated and compared between the two groups. Healthcare costs related to SLE and LN management were assessed: (1) maintenance IST from inclusion to the end of follow-up; (2) hydroxychloroquine and corticosteroids; and (3) inpatient care for the management of adverse events, disease progression, disease surveillance, LN relapse or severe SLE flare. Inpatient care costs were valued based on diagnosis-related groups codes (Classification Internationale des Maladies CIM-10 coding system), and using 2018 hospital activity and associated costs from the French National Reference Costs. Indirect costs (using time lost for work activity) were also investigated.

Analysis was performed using SPSS software V.20.0.

## Role of the funding source

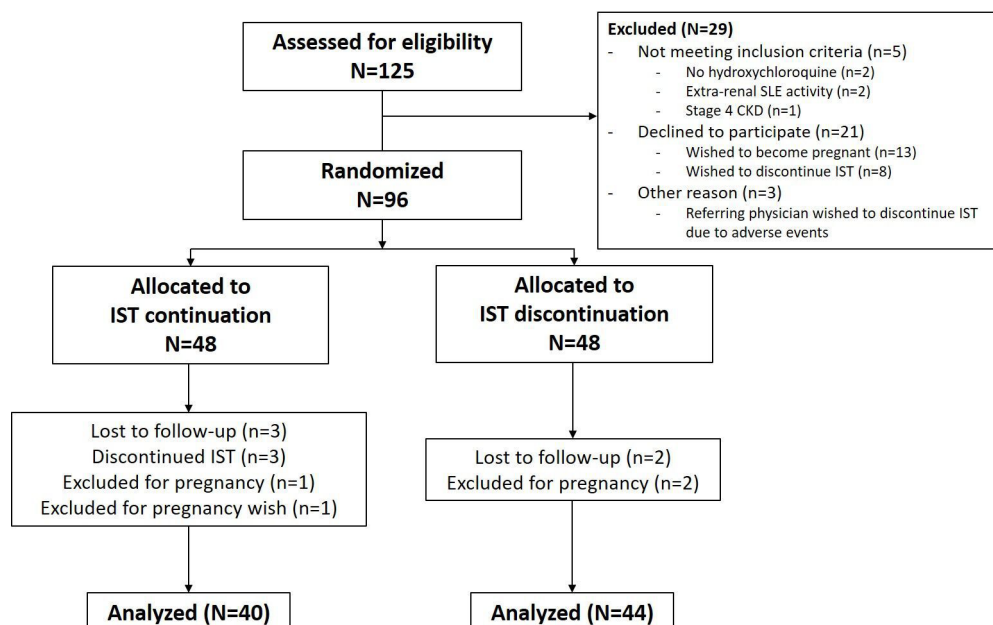
WIN-Lupus was an academic trial, designed by the scientific committee of the Groupe Coopératif sur le Lupus Rénal (GCLR) and funded by the French Ministry of Health (PHRC 2010). Data were collected by site investigators, compiled by the Clinical Research Department from the Assistance Publique-Hôpitaux de Marseille, and analysed by the department of Public Health from Aix-Marseille University. The scientific committee of the GCLR interpreted the data. All authors had access to the data and were responsible for the decision to submit the manuscript.

## RESULTS

A total of 125 patients were screened (figure 1) and 96 were enrolled in the trial (intention-to-treat population): 48 in the IST continuation group and 48 in the IST discontinuation group. Inclusions were interrupted after 5 years and the expected number of inclusions was not reached. As depicted in figure 1, 12 randomised patients were excluded from the study; 84 patients completed the study protocol (per-protocol population). The baseline characteristics of these 84 patients are shown in table 1. Most patients were female (84.5%), Caucasian (63.1%), and had suffered a first flare of proliferative LN (76.2%). Most patients had received low-dose intravenous cyclophosphamide as induction therapy (59.5%) and were receiving mycophenolate mofetil as maintenance IST (78.6%). The baseline characteristics of the 96 randomised patients (intent-to-treat population) are shown in online supplemental table 1.

## Primary outcome

Relapse of proliferative LN occurred in 5/40 (12.5%) patients from the IST continuation group and in 12/44 (27.3%) patients from the IST discontinuation group ( $p = 0.710$ , D (95% CI): 14.8 (−1.9 to 31.5)) in the PP set and the ITT set. Non-inferiority of IST discontinuation was not demonstrated. IST continuation was not significantly superior to discontinuation in terms of relapse of proliferative LN ( $p = 0.092$ ). Relapses occurred after a median of 9 months (IQR: 5–17) in patients with IST continuation and 9 months (IQR: 7–14) in patients with IST discontinuation. Time to



**Figure 1** Flow diagram of the study population. CKD, chronic kidney disease; IST, immunosuppressive therapy; SLE, systemic lupus erythematosus.



**Table 1** Baseline characteristics of the patients in the per-protocol population

Characteristics	IST continuation (N=40)	IST discontinuation (N=44)
	Mean (SD) N (%)	Mean (SD) N (%)
Age, years	37.5 (14.0)	36.7 (13.2)
Sex, female	33 (82.5)	38 (86.4)
Ethnicity		
Caucasian	27 (67.5)	26 (59.1)
Black	9 (22.5)	14 (31.8)
Asian	4 (10.0)	4 (9.1)
SLE disease duration, years	9.7 (10.2)	7.6 (6.2)
Antiphospholipid syndrome	5 (12.5)	6 (13.6)
Menopause	6/31 (19.4)	10/38 (26.3)
Obesity (body mass index $\geq 30$ kg/m <sup>2</sup> )	5 (12.5)	6 (13.6)
Systolic blood pressure, mm Hg	121 (13)	116 (14)
Diastolic blood pressure, mm Hg	73 (11)	73 (10)
First flare of proliferative LN	32 (80.0)	32 (72.7)
Induction therapy		
Low-dose intravenous cyclophosphamide	26 (65.0)	24 (54.5)
Mycophenolate mofetil	14 (35.0)	20 (45.5)
Maintenance IST		
Duration, years	2.8 (0.9)	2.8 (0.8)
Mycophenolate mofetil	30 (75.0)	36 (81.8)
Azathioprine	10 (25.0)	8 (18.2)
Doses prescribed (mg/day)		
Mycophenolate mofetil	1633 (571)	1364 (684)
Azathioprine	82.5 (29)	81.2 (39)
Corticosteroids	4.3 (2.8)	4.3 (2.8)
Hydroxychloroquine	365 (89)	334 (131)
Hydroxychloroquine serum level, ng/L	861 (714)	644 (428)
Serum creatinine, $\mu$ mol/L	67.7 (14.7)	72.7 (17.2)
Estimated GFR, mL/min/1.73 m <sup>2</sup>	101.6 (28.0)	94.9 (25.8)
Urinary protein/creatinine ratio, g/g	0.28 (0.38)	0.21 (0.28)
Urinary protein/creatinine ratio $\leq 0.2$ g/g	26 (65.0)	29 (65.9)
Urinary protein/creatinine ratio $\leq 0.5$ g/g	34 (85.0)	42 (95.5)
Urinary protein/creatinine ratio $\leq 0.7$ g/g	35 (87.5)	43 (97.7)
Serum albumin, g/dL	4.2 (0.5)	4.2 (0.5)
Haemoglobin, g/L	1.30 (0.18)	1.29 (0.13)
Leucocytes, G/L	5.71 (1.7)	5.58 (2.4)
Lymphocytes, G/L	1.5 (0.7)	1.39 (0.6)
Platelets, G/L	255 (89)	240 (79)
Low C3	5/38 (13.2)	5/42 (11.9)
Low C4	4/38 (10.5)	4/42 (9.5)
Positive anti-dsDNA	24/38 (63.2)	24/44 (54.5)
SLEDAI score	2.2 (1.7)	1.6 (1.8)

Data are expressed as mean (SD), number (%) or number/number available (%). GFR, glomerular filtration rate; IST, immunosuppressive therapy; LN, lupus nephritis; SLE, systemic lupus erythematosus; SLEDAI, SLE Disease Activity Index.

renal flare, compared by Kaplan-Meier survival curves (log rank test), did not differ between the groups ( $p=0.079$ ) (figure 2A). The baseline individual characteristics of the 17 patients who relapsed, as well as renal presentation and pathology at the time of LN relapse, are presented in online supplemental table 2.

## Secondary outcomes

There were significantly more severe SLE flares in patients in the IST discontinuation group compared with the IST continuation

group (14/44 (31.8%) vs 5/40 (12.5%) patients,  $p=0.035$ , D (95% CI) 19.3% (CI 1.3% to 35.7%)), and time to severe SLE flares was shorter in patients in the IST discontinuation group (log rank test,  $p=0.034$ ) (figure 2B).

The adverse events in the 96 randomised patients are shown in table 2. There was no significant difference between the groups.

The evolution over time of several clinical (SLEDAI, dose of corticosteroids, SF-36 mental and physical component summaries) and biological (UPCR, serum creatinine, blood hydroxychloroquine levels) parameters through the study period are shown in online supplemental figure 2. Extrarenal SLE activity, evaluated by the SLEDAI and exposure to corticosteroids, did not differ between the two groups.

IST discontinuation was less costly than IST continuation in terms of maintenance therapy ( $-83\%$ ;  $p<0.001$ ), but more costly in terms of inpatient care ( $+61\%$ ,  $p=0.027$ ) (online supplemental table 3). No difference was found in indirect costs. Overall, patients from the IST discontinuation group had lower costs compared with the IST continuation group ( $-40\%$ ;  $p=0.001$ ).

## Risk factors for proliferative LN relapse

The risk factors for proliferative LN relapse (univariate analysis) are shown in table 3. Antiphospholipid syndrome, higher UPCR at baseline, low C3 and higher SLEDAI at inclusion were associated with LN relapse. Higher eGFR, lower serum albumin, lower haemoglobin level and lower leucocyte, lymphocyte, and eosinophil counts were also associated with LN relapse.

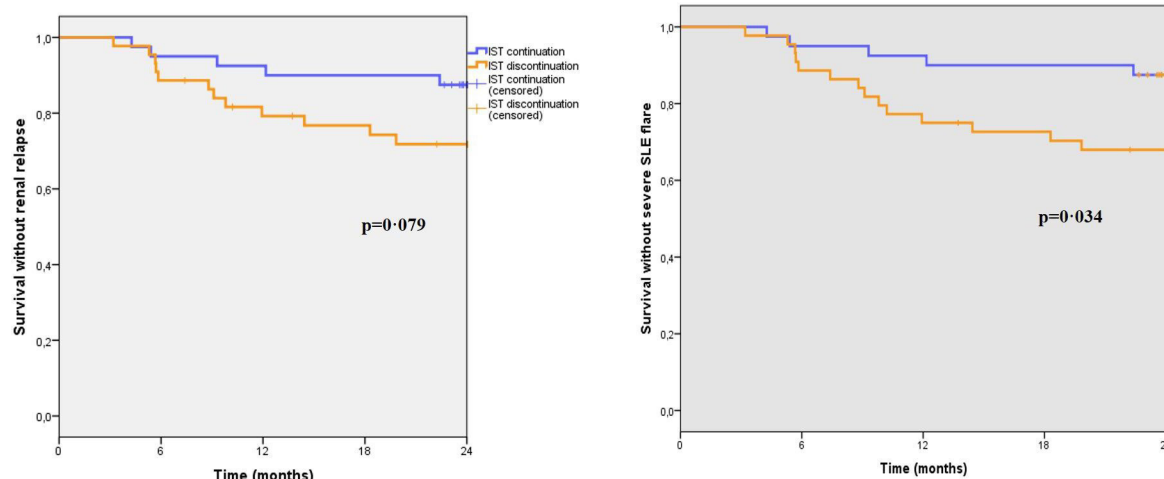
The risk factors for severe SLE flares (univariate analysis) are shown in online supplemental table 4.

The risk factors for LN relapse among patients in the IST discontinuation group are shown in online supplemental table 5. The risk factors for severe SLE flares among patients in the IST discontinuation group are shown in online supplemental table 6.

## DISCUSSION

In this multicentre RCT, non-inferiority of IST discontinuation after 2–3 years was not demonstrated, although IST continuation was not significantly superior regarding LN relapse. IST discontinuation was associated with a higher risk of severe SLE flares (renal or extrarenal) requiring induction IST. No patient developed kidney failure and only two patients, with IST discontinuation, experienced an increase in serum creatinine  $\geq 50\%$ . Health-related costs were lower in the IST discontinuation group. Exposure to corticosteroids and adverse events did not differ between the groups.

In patients with proliferative LN, the possibility of discontinuation of maintenance IST, and the optimal timing for this discontinuation, is poorly defined. In a national survey conducted in France in 2012 among LN specialists,<sup>22</sup> 40% stated that they continued maintenance IST for 2 years in patients who were stable in remission, 25% continued for 3 years, 25% for 4–5 years and 9% for  $>5$  years. Different expert recommendations on the treatment of proliferative LN were published in 2012.<sup>23</sup> While the European Alliance of Associations for Rheumatology (EULAR)/ERA-EDTA<sup>24</sup> recommended to continue maintenance IST for at least 3 years after induction therapy, the Kidney Disease Improving Global Outcome (KDIGO)<sup>25</sup> proposed to continue maintenance IST for at least 1 year after clinical remission before considering tapering, and the ACR<sup>26</sup> highlighted the need for evidence-based data to determine the optimal duration of maintenance IST. A recent update of the EULAR/ERA-EDTA recommendations proposed the gradual withdrawal of treatment



**Figure 2** Survival analyses. (A) Survival without renal relapse. (B) Survival without severe SLE flare (online supplemental material). IST, immunosuppressive therapy; SLE, systemic lupus erythematosus.

(corticosteroids first, then immunosuppressive drugs) after at least 3–5 years in patients with a complete clinical response (grade 2b/C recommendation).<sup>6</sup> Similarly, the KDIGO 2021 update proposed a minimum of 3 years of IST.<sup>27</sup>

Moroni *et al*<sup>28</sup> tested the discontinuation of IST and corticosteroids in 73 patients with LN who had achieved a stable clinical remission. A flare requiring treatment reinforcement was observed in 21 (29%) patients during treatment tapering, which is consistent with the 25% rate of renal relapse (and 32% of overall severe relapse) observed here in patients with IST discontinuation. Zen *et al* recently reported the outcomes of 83 patients in remission after LN, for whom IST was discontinued after a mean of 3.8 years.<sup>29</sup> After a mean follow-up of 9.7 years, 8 (10%) patients had an LN relapse and 19 (23%) patients experienced a flare of SLE. Younger age at IST discontinuation and the absence of HCQ prescription were associated with LN flares. This risk of relapse should be considered against the high proportion of patients who were weaned from IST without relapse.

Rather than generalising long-term continuation of maintenance IST to prevent relapses, the challenge consists of identifying patients who can safely be weaned from IST. Here, SLEDAI at inclusion, C3 consumption and lower lymphocyte count were predictive of renal relapse and of severe SLE flare. Other biological parameters, possibly associated with residual inflammation (lower serum albumin, lower haemoglobin), were also predictive of relapse and severe SLE flares. Higher eGFR was also a risk factor for relapse, which is of interest as SLE disease activity may decrease as kidney function declines.<sup>30</sup> Different thresholds (0.2, 0.5 or 0.7 g/g), routinely used in clinical trials to define LN complete remission or response, were predictive of risk of relapse. Proteinuria in patients with a previous flare of LN can result from persistent active lesions, or from chronic glomerular damage. No repeat kidney biopsy was warranted in WIN-Lupus to ascertain histological remission, and patients with higher initial UPCr may have presented ongoing histological activity. Of note, histological activity can be observed even in patients with complete clinical remission,<sup>31 32</sup> and the performance of a repeat kidney biopsy to confirm histological remission before IST weaning could become a new standard.

de Rosa *et al*<sup>31</sup> suggested that repeat biopsy could allow the selection of patients with pathological remission for IST discontinuation. Malvar *et al*<sup>33</sup> proposed a kidney biopsy-based management of maintenance IST for proliferative LN. Among

69 patients with histological remission and IST discontinuation, only 7 (10%) experienced a renal relapse.

The main motivation for IST discontinuation is to limit the burden of adverse events related to immunosuppression. Here, we evaluated the discontinuation of maintenance IST (mycophenolate mofetil or azathioprine), but all patients were on hydroxychloroquine, and low-dose corticosteroids could be prescribed. The reason we permitted the continuation of low-dose corticosteroids in this trial was to allow flexibility in controlling the extrarenal manifestations of lupus. Indeed, in a national survey,<sup>22</sup> 55% of physicians managing patients with LN reported continuing low-dose corticosteroids in maintenance. WIN-Lupus was not a trial of complete treatment withdrawal, as reported in recent cohort studies.<sup>4</sup> One of the possible reasons for clinicians to maintain IST is to prevent the need for corticosteroid use or increase,<sup>34</sup> which is itself associated with significant damage.<sup>35 36</sup> Here, the overall exposure to corticosteroids did not differ between the groups, indicating that IST discontinuation did not lead to a compensatory increase in corticosteroid dose for lupus containment. Blood levels of hydroxychloroquine were not associated with renal relapses or severe flares in this cohort, but only a minority of patients had low blood levels of hydroxychloroquine. In the present trial, the absence of a difference in adverse events between the groups could be related to the relatively short follow-up, which does not allow us to conclude on the absence of benefit of treatment withdrawal long term.

From an economic perspective, IST discontinuation was associated with cost savings due to lower maintenance therapy costs, while inpatient costs increased due to relapse care.

This study has several limitations. First, we did not reach the 200 inclusions that were expected, and the scientific committee decided to end patient recruitment after 5 years due to the slow inclusion rate (mainly related to the strict inclusion criteria, and to the exclusion of patients wishing to become pregnant within 2 years). The trial is thus underpowered, and superiority of treatment continuation could have been demonstrated with more patients. Second, block randomisation was applied to limit allocation bias, but only randomisation zone was used for stratification. Other clinically relevant factors could have been taken into account, such as induction and maintenance therapies, or initial doses of corticosteroids. Yet, these factors were well balanced between groups. Third, it was an open label and not double-blinded trial, due to budget constraints. Yet, the primary

**Table 2** Adverse events

	IST continuation (N=48)	IST discontinuation (N=48)	All patients (N=96)
Death	0	0	0
Renal adverse events	14	18	32
Serum creatinine +20%	14	16	30
Serum creatinine +50%	0	2	2
End-stage kidney disease	0	0	0
Infections	19	14	33
Severe	1	3	4
Appendicitis	0	1	1
Malaria	0	1	1
Zoster	1	1	2
Other	18	11	29
Lower urinary tract	6	4	10
Upper respiratory tract	4	4	8
Ear, nose, and throat	2	1	3
Erysipelas	1	1	2
Dermatomycosis	2	0	2
Cervical human papillomavirus	2	1	3
Warts	1	0	1
Haematological	41	48	89
Myelodysplastic syndrome	1	0	1
Hypereosinophilia	1	0	1
Haematoma	0	1	1
Anaemia with Hb <10 g/dL	5	2	7
Anaemia with Hb <8 g/dL	1	0	1
Leucopenia <4 G/L	16	17	33
Leucopenia <3 G/L	0	4	4
Neutropenia <1.5 G/L	3	7	10
Neutropenia <1 G/L	0	1	1
Lymphopenia <1 G/L	12	16	28
Lymphopenia <0.5 G/L	1	0	1
Thrombopenia <100 G/L	1	0	1
Other	3	6	9
Cataract	1	1	2
Alopecia	0	2	2
Rash unrelated to SLE	1	0	1
New-onset hypertension	1	0	1
Obstructive sleep apnoea	0	1	1
Unexplained chest pain	0	1	1
Unexplained transient dyspnoea	0	1	1

Hb, haemoglobin; IST, immunosuppressive therapy; SLE, systemic lupus erythematosus.

endpoint was strictly defined and documented by kidney biopsy. Fourth, we did not select patients with appropriate adherence to treatment, but rather chose real-life patients, who were prescribed an antimalarial and mycophenolate mofetil or azathioprine, which they declared they were taking. In addition, low-dose corticosteroids was defined as a daily dose of  $\leq 10$  mg/day and not as a daily dose of  $< 7.5$  mg/day. Moreover, LN relapses can occur several years after IST discontinuation<sup>28</sup> and late relapses were not captured by this study. A 2-year follow-up may also have been too short to determine the impact of IST continuation or discontinuation on long-term kidney function. Finally, selection bias is possible, as investigators may have refrained from including patients who had previously relapsed

**Table 3** Risk factors for renal relapse at inclusion (per-protocol population)

	Relapse (N=17) Mean (SD) N (%)	No relapse (N=67) Mean (SD) N (%)	P value
Age, years	32.4 (11.7)	38.3 (13.8)	0.111
Sex, female	17 (100.0)	54 (80.6)	0.061
Ethnicity			0.395
Caucasian	9 (52.9)	44 (65.7)	–
Black	5 (29.4)	18 (26.9)	–
Asian	3 (17.6)	5 (7.5)	–
SLE disease duration, years	8.1 (5.9)	8.7 (8.9)	0.764
Antiphospholipid syndrome	5 (29.4)	6 (9.0)	0.041
Menopause	1 (5.9)	15/52 (28.8)	0.094
Obesity	2 (11.8)	9 (13.4)	1.00
First flare of proliferative LN	12 (70.6)	52 (77.6)	0.537
Induction therapy with:			0.947
Intravenous cyclophosphamide	10 (58.8)	40 (59.7)	
Mycophenolate mofetil	7 (41.2)	27 (40.3)	
Maintenance IST duration at M0, years	2.6 (1.0)	2.9 (0.7)	0.231
Maintenance IST			0.753
Mycophenolate mofetil	13 (76.5)	53 (79.1)	–
Azathioprine	4 (23.5)	14 (20.9)	–
Doses prescribed at M0, mg/day			
Mycophenolate mofetil	1500.0 (277.3)	1510.2 (639.3)	0.956
Azathioprine	75.0 (28.9)	82.7 (35.9)	0.676
Corticosteroids	4.8 (3.3)	4.1 (2.6)	0.436
Hydroxychloroquine	332 (142)	354 (105)	0.455
Serum hydroxychloroquine level, ng/L	787 (494)	722 (598)	0.464
Serum hydroxychloroquine level <200 ng/L	2/15 (13.3)	12/53 (22.6)	0.719
Serum creatinine, $\mu$ mol/L	63.8 (10.4)	71.9 (17.0)	0.052
Estimated GFR, mL/min/1.73 m <sup>2</sup>	107.2 (24.0)	95.8 (27.3)	0.046
Chronic kidney disease stage			0.134
Stage 1	14 (82.4)	38 (56.7)	–
Stage 2	2 (11.8)	24 (35.8)	–
Stage 3	1 (5.9)	5 (7.5)	–
Urinary protein/creatinine ratio, g/g	0.548 (0.550)	0.169 (0.187)	0.001
Urinary protein/creatinine ratio $\leq 0.2$ g/g	5 (29.4%)	50 (74.6%)	<0.001
Urinary protein/creatinine ratio $\leq 0.5$ g/g	12 (70.6)	64 (95.5)	0.007
Urinary protein/creatinine ratio $\leq 0.7$ g/g	12 (70.6)	66 (98.5)	0.001
Serum albumin, g/dL	3.9 (0.4)	4.3 (0.4)	0.004
Haemoglobin level, g/L	1.19 (0.14)	1.32 (0.14)	0.003
Leucocyte count, g/L	4.8 (2.4)	5.8 (1.9)	0.011
Neutrophil count, g/L	3.3 (2.4)	3.8 (1.9)	0.204
Lymphocyte count, g/L	1.0 (0.4)	1.5 (0.6)	0.003
Basophil count, g/L	0.01 (0.01)	0.02 (0.02)	0.128
Eosinophil count, g/L	0.04 (0.04)	0.10 (0.14)	0.049
Platelet count, g/L	289 (130)	237 (65)	0.109
Low C3	6/16 (37.5)	4/64 (6.3)	0.003
Low C4	3/16 (18.8)	4/64 (7.8)	0.194
Positive anti-dsDNA	13 (76.5)	36 (53.8)	0.092
SLEDAI score	3.1 (2.6)	1.6 (1.4)	0.025

Data are expressed as % or mean (SD). In the case of missing data, the number/number available (%) is indicated.  
GFR, glomerular filtration rate; IST, immunosuppressive therapy; LN, lupus nephritis; SLE, systemic lupus erythematosus; SLEDAI, SLE Disease Activity Index.

(small proportion of patients with a previous history of relapse), or those who were in complete remission and were willing to discontinue IST.

This study also has strengths. WIN-Lupus is the first RCT to compare maintenance IST continuation with IST discontinuation in patients with proliferative LN. The patients included were

homogeneous in terms of organ involvement (biopsy-proven proliferative LN), duration of maintenance IST (2–3 years), duration of remission ( $\geq 1$  year) and all patients were prescribed hydroxychloroquine. Second, although patients were included over several years, the gold-standard therapeutic strategy for proliferative LN remained the same during the study period.

To conclude, non-inferiority of maintenance IST discontinuation after 2–3 years was not demonstrated for renal relapses in patients with proliferative LN. IST discontinuation was associated with a higher risk of severe SLE flares. Nonetheless, a majority of patients did not relapse at 2 years after IST discontinuation. The most important challenge remains the identification and selection of patients who can be safely weaned from IST.

#### Author affiliations

- <sup>1</sup>C2VN, INSERM, INRAE, Aix-Marseille Université, Marseille, France
- <sup>2</sup>Nephrology, AP-HM, Marseille, France
- <sup>3</sup>Centre de référence maladies rares, Hôpital Cochin, AP-HP, Paris, France
- <sup>4</sup>Centre de recherche épidémiologie et biostatistiques de Sorbonne Paris Cité, Université de Paris, Paris, France
- <sup>5</sup>Laboratoire de Santé Publique, CERES, Aix-Marseille Université, Marseille, France
- <sup>6</sup>Internal Medicine, Centre Hospitalier Universitaire Grenoble, Michallon Hospital, Grenoble, France
- <sup>7</sup>Nephrology, Centre Hospitalier d'Evry, Evry, France
- <sup>8</sup>Internal Medicine, Hôpital Européen, Marseille, France
- <sup>9</sup>Nephrology, CHU Bordeaux GH Pellegrin, Bordeaux, France
- <sup>10</sup>Laboratoire d'Anatomie Pathologique, AP-HM, Marseille, France
- <sup>11</sup>Service de Médecine Interne, CHU, Fort-de-France, Martinique
- <sup>12</sup>Centre d'Investigation Clinique, AP-HM, Marseille, France
- <sup>13</sup>Nephrology and Organ Transplantation, CHU Toulouse, Toulouse, France
- <sup>14</sup>Nephrology, CH Avignon, Avignon, France
- <sup>15</sup>Internal Medicine, CHU Limoges, Limoges, France
- <sup>16</sup>Nephrology, Necker-Enfants Malades Hospitals, Paris, France
- <sup>17</sup>Nephrology, CHU Lyon, Lyon, France
- <sup>18</sup>Nephrology, Hôpital Européen Georges Pompidou, Paris, France
- <sup>19</sup>Université Paris Descartes, Paris, France
- <sup>20</sup>Internal Medicine, CHU Lille, Lille, France
- <sup>21</sup>Médecine Interne, Hôpital Cochin, Paris, France
- <sup>22</sup>Nephrology, CHU de Rouen CETD, Rouen, France
- <sup>23</sup>Support Unit for Clinical Research and Health Economics, AP-HM, Marseille, France
- <sup>24</sup>Centre de Référence Maladies Rares, Internal Medicine, CHU Lille, Lille, France
- <sup>25</sup>Internal Medicine, Hôpital Robert Schuman, Metz-Vantoux, France
- <sup>26</sup>Médecine Interne 2, Hôpitaux Universitaires Pitié Salpêtrière – Charles Foix, Paris, France
- <sup>27</sup>Rheumatology, CHU Nice, Nice, France
- <sup>28</sup>Nephrology, Henri Mondor, Créteil, France
- <sup>29</sup>Internal Medicine, CHU Grenoble Alpes, Grenoble, France
- <sup>30</sup>Internal Medicine, Lille University School of Medicine, Lille, France
- <sup>31</sup>Centre de référence maladies auto-immunes et systémiques, Internal Medicine, AP-HP, Paris, France
- <sup>32</sup>Nephrology, AP-HP, Paris, France
- <sup>33</sup>INSERM U1149, Université de Paris, Paris, France

**Twitter** Noemie Jourde-Chiche @NJourde and Micheline Pha @michelinepha

**Acknowledgements** We thank all members of the Groupe Coopératif sur le Lupus Rénal (GCLR) who participated in the conception of the study, in particular Professor Jacques Pourrat and Professor Bruno Moulin. We are grateful to Elisabeth Castanier, Sophie Tardoski and Julien Faraut for their help in the conduct of this research and data acquisition. We thank the Direction de la Recherche Santé from AP-HM, especially Patrick Sudour for his help in the conception and conduct of this trial, and Richard Malkoun for data management. The authors thank Newmed Publishing Ltd. for providing English editing services.

**Contributors** NJ-C, KB, ZA and ED designed the study. NC-C, LB, SB, VC, LCh, LCo, CD, BD, SF, PG, GG, AHua, AHum, EK, AK, ML, VLG, LL, HM-L, FM, MP, VQ, PR, FS-R, DV, EH, ZA and ED included patients in the trial, revised the manuscript, and provided additional data for the revised version of the manuscript. LD supervised interpretation of kidney biopsy results. NJ-C, KB, AL and SL analysed the data, KB and AL performed the statistical analyses, SL did the medicoeconomic analyses. NJ-C wrote the draft of the manuscript. NJ-C, NC-C, KB, EH and ED revised the manuscript. All authors read the final manuscript and gave their consent for publication. Non-author contribution: Professor Jacques Pourrat and Professor Bruno Moulin participated in the initial phase of study design. Elisabeth Castanier, Sophie Tardoski and Julien Faraut collected data. Patrick Sudour supervised the conduct of the study and monitored data collection. Richard Malkoun was the data manager of

the study. NJ-C is responsible for the overall content as guarantor. She accepts full responsibility for the finished work and the conduct of the study, had access to the data and controlled the decision to publish.

**Funding** The trial was funded by the French Ministry of Health (PHRC 2010-24-13).

**Competing interests** NJ-C reports receiving non-financial support from Sanofi-Genzyme and Vifor; speaking and consulting fees from Vifor and Otsuka; research grant from Fresenius Medical Care; outside the submitted work. NC-C reports research grant from Roche; outside the submitted work. LB reports speaking fees from GSK, Novartis, Biocryst, Takeda, Behring and Blueprint; research grants from Takeda, GSK, Sanofi, Biocryst, Novartis; outside the submitted work. LCh reports speaking fees from BMS and non-financial support from AstraZeneca; outside the submitted work. LCo reports speaking fees from Astellas, Chiesi, Novartis, Sandoz, Otsuka, GSK, Biotest; consultancy fees from Biotest, Hansa, Novartis; research grants from Novartis, Astellas; travel funding from Astellas, Chiesi, Novartis, Sandoz, Vifor; outside the submitted work. LD reports speaking fees from AstraZeneca and Janssen. BD reports speaking fees from Genzyme and Novonordisk; consultancy fees from Amicus; research grant from Shire; outside the submitted work. SF reports speaking fees from Asahi, Vifor and Sanofi; consultancy fees from Abonyx Pharma; outside the submitted work. GG reports speaking fees from Genzyme, Pfizer and Novartis; non-financial support from Novartis, Amgen, Addmedica, Lilly, Abbvie, Amicus therapeutics, Shire, Pfizer and LFB medicaments; outside the submitted work. AH reports speaking fees from Janssen and Pfizer; outside the submitted work. AK reports speaking fees from Vifor, GSK, AstraZeneca, Roche; consultancy fees from Novartis, GSK, Boehringer-Ingelheim; non-financial support from Vifor, Sanofi and Alexion; outside the submitted work. ML reports speaking fees from Chugai-Roche, Bayer, Pfizer, Leopharma; grant from Chugai-Roche; outside the submitted work. VQ reports consultancy fees from Boehringer Ingelheim and GSK; outside the submitted work. EH reports consulting fees from Johnson&Johnson, Boehringer Ingelheim, Bayer, GSK, Roche-Chugai, Sanofi-Genzyme; speaking fees from Johnson&Johnson, GSK, Roche-Chugai; research grants from CSL Behring, Johnson&Johnson, GSK, Roche-Chugai; outside the submitted work. ZA reports speaking and consultancy fees from GSK. ED reports speaking fees from GSK, Amgen, AstraZeneca; consultancy fees from GSK, AstraZeneca, Amgen; research grant from Roche; outside the submitted work.

**Patient and public involvement** Patients and/or the public were not involved in the design, or conduct, or reporting, or dissemination plans of this research.

**Patient consent for publication** Not applicable.

**Ethics approval** This study involves human participants and was approved by Comité de Protection des Personnes Sud-Méditerranée IID-RCB 2010-022859-30. Participants gave informed consent to participate in the study before taking part.

**Provenance and peer review** Not commissioned; externally peer reviewed.

**Data availability statement** Data are available on reasonable request.

**Supplemental material** This content has been supplied by the author(s). It has not been vetted by BMJ Publishing Group Limited (BMJ) and may not have been peer-reviewed. Any opinions or recommendations discussed are solely those of the author(s) and are not endorsed by BMJ. BMJ disclaims all liability and responsibility arising from any reliance placed on the content. Where the content includes any translated material, BMJ does not warrant the accuracy and reliability of the translations (including but not limited to local regulations, clinical guidelines, terminology, drug names and drug dosages), and is not responsible for any error and/or omissions arising from translation and adaptation or otherwise.

**Open access** This is an open access article distributed in accordance with the Creative Commons Attribution Non Commercial (CC BY-NC 4.0) license, which permits others to distribute, remix, adapt, build upon this work non-commercially, and license their derivative works on different terms, provided the original work is properly cited, appropriate credit is given, any changes made indicated, and the use is non-commercial. See: <http://creativecommons.org/licenses/by-nc/4.0/>.

#### ORCID iDs

Noemie Jourde-Chiche <http://orcid.org/0000-0001-9315-1577>  
 Nathalie Costedoat-Chalumeau <http://orcid.org/0000-0002-1555-9021>  
 Stanislas Faguer <http://orcid.org/0000-0003-0553-0927>  
 Eric Hachulla <http://orcid.org/0000-0001-7432-847X>  
 Eric Daugas <http://orcid.org/0000-0001-7256-7979>

#### REFERENCES

- 1 Cameron JS. Lupus nephritis. *J Am Soc Nephrol* 1999;10:413–24.
- 2 Arnaud L, Tektonidou MG. Long-Term outcomes in systemic lupus erythematosus: trends over time and major contributors. *Rheumatology* 2020;59:v29–38.
- 3 Dörner T, Furie R. Novel paradigms in systemic lupus erythematosus. *Lancet* 2019;393:2344–58.
- 4 Moroni G, Frontini G, Ponticelli C. When and how is it possible to stop therapy in patients with lupus nephritis? *Clin J Am Soc Nephrol* 2021.



- 5 Lightstone L, Doria A, Wilson H, *et al.* Can we manage lupus nephritis without chronic corticosteroids administration? *Autoimmun Rev* 2018;17:4–10.
- 6 Fanouriakis A, Kostopoulou M, Cheema K, *et al.* 2019 update of the joint European League against rheumatism and European renal Association-European dialysis and transplant association (EULAR/ERA-EDTA) recommendations for the management of lupus nephritis. *Ann Rheum Dis* 2020;79:713–23.
- 7 Weening JJ, D'Agati VD, Schwartz MM, *et al.* The classification of glomerulonephritis in systemic lupus erythematosus revisited. *Kidney Int* 2004;65:521–30.
- 8 Houssiau FA, Vasconcelos C, D'Cruz D, *et al.* Immunosuppressive therapy in lupus nephritis: the Euro-Lupus nephritis trial, a randomized trial of low-dose versus high-dose intravenous cyclophosphamide. *Arthritis Rheum* 2002;46:2121–31.
- 9 Houssiau FA, D'Cruz D, Sangle S, *et al.* Azathioprine versus mycophenolate mofetil for long-term immunosuppression in lupus nephritis: results from the maintain nephritis trial. *Ann Rheum Dis* 2010;69:2083–9.
- 10 Dooley MA, Jayne D, Ginzler EM, *et al.* Mycophenolate versus azathioprine as maintenance therapy for lupus nephritis. *N Engl J Med* 2011;365:1886–95.
- 11 Hanly JG, O'Keeffe AG, Su L, *et al.* The frequency and outcome of lupus nephritis: results from an international inception cohort study. *Rheumatology* 2016;55:252–62.
- 12 Moroni G, Gatto M, Raffiotta F, *et al.* Can we withdraw immunosuppressants in patients with lupus nephritis in remission? an expert debate. *Autoimmun Rev* 2018;17:11–18.
- 13 Grootscholten C, Berden JHM. Discontinuation of immunosuppression in proliferative lupus nephritis: is it possible? *Nephrol Dial Transplant* 2006;21:1465–9.
- 14 van Vollenhoven RF, Mosca M, Bertias G, *et al.* Treat-to-target in systemic lupus erythematosus: recommendations from an international Task force. *Ann Rheum Dis* 2014;73:958–67.
- 15 Laskari K, Tzioufas AG, Antoniou A, *et al.* Longterm followup after tapering mycophenolate mofetil during maintenance treatment for proliferative lupus nephritis. *J Rheumatol* 2011;38:1304–8.
- 16 Hochberg MC. Updating the American College of rheumatology revised criteria for the classification of systemic lupus erythematosus. *Arthritis Rheum* 1997;40:40.
- 17 Gordon C, Jayne D, Pusey C, *et al.* European consensus statement on the terminology used in the management of lupus glomerulonephritis. *Lupus* 2009;18:257–63.
- 18 Petri M, Kim MY, Kalunian KC, *et al.* Combined oral contraceptives in women with systemic lupus erythematosus. *N Engl J Med* 2005;353:2550–8.
- 19 Piaggio G, Elbourne DR, Pocock SJ, *et al.* Reporting of noninferiority and equivalence randomized trials: extension of the CONSORT 2010 statement. *JAMA* 2012;308:2594–604.
- 20 D'Agostino RB, Massaro JM, Sullivan LM. Non-inferiority trials: design concepts and issues - the encounters of academic consultants in statistics. *Stat Med* 2003;22:169–86.
- 21 Mo Y, Lim C, Watson JA, *et al.* Non-adherence in non-inferiority trials: pitfalls and recommendations. *BMJ* 2020;370:m2215.
- 22 Jourde-Chiche N, Chiche L, Mancini J, *et al.* [Proliferative lupus nephritis treatment: practice survey in nephrology and internal medicine in France]. *Nephrol Ther* 2014;10:170–6.
- 23 Wilhelmus S, Bajema IM, Bertias GK, *et al.* Lupus nephritis management guidelines compared. *Nephrol Dial Transplant* 2016;31:904–13.
- 24 Bertias GK, Tektonidou M, Amoura Z, *et al.* Joint European League against rheumatism and European renal Association-European dialysis and transplant association (EULAR/ERA-EDTA) recommendations for the management of adult and paediatric lupus nephritis. *Ann Rheum Dis* 2012;71:1771–82.
- 25 Kidney Disease: Improving Global Outcomes (KDIGO) Glomerulonephritis Work Group. KDIGO clinical practice guideline for glomerulonephritis. *Kidney Int Suppl* 2012;2:139–274.
- 26 Hahn BH, McMahon MA, Wilkinson A, *et al.* American College of rheumatology guidelines for screening, treatment, and management of lupus nephritis. *Arthritis Care Res* 2012;64:797–808.
- 27 Rovin BH, Caster DJ, Cattran DC, *et al.* Management and treatment of glomerular diseases (Part 2): conclusions from a kidney disease: improving global outcomes (KDIGO) controversies conference. *Kidney Int* 2019;95:281–95.
- 28 Moroni G, Longhi S, Giglio E, *et al.* What happens after complete withdrawal of therapy in patients with lupus nephritis. *Clin Exp Rheumatol* 2013;31:575–81.
- 29 Zen M, Fuzzi E, Loredi Martinez M. Immunosuppressive therapy withdrawal after remission achievement in patients with lupus nephritis. *Rheumatology* 2021;keab373.
- 30 Nossent HC, Swaak TJ, Berden JH. Systemic lupus erythematosus: analysis of disease activity in 55 patients with end-stage renal failure treated with hemodialysis or continuous ambulatory peritoneal dialysis. Dutch Working Party on SLE. *Am J Med* 1990;89:169–74.
- 31 De Rosa M, Azzato F, Toblli JE, *et al.* A prospective observational cohort study highlights kidney biopsy findings of lupus nephritis patients in remission who flare following withdrawal of maintenance therapy. *Kidney Int* 2018;94:788–94.
- 32 Malvar A, Pirruccio P, Alberton V, *et al.* Histologic versus clinical remission in proliferative lupus nephritis. *Nephrol Dial Transplant* 2017;32:1338–44.
- 33 Malvar A, Alberton V, Lococo B, *et al.* Kidney biopsy-based management of maintenance immunosuppression is safe and may ameliorate flare rate in lupus nephritis. *Kidney Int* 2020;97:156–62.
- 34 Ngamjanyaporn P, McCarthy EM, Sergeant JC, *et al.* Clinicians approaches to management of background treatment in patients with SLE in clinical remission: results of an international observational survey. *Lupus Sci Med* 2017;4:e000173.
- 35 Thamer M, Hernán MA, Zhang Y, *et al.* Prednisone, lupus activity, and permanent organ damage. *J Rheumatol* 2009;36:560–4.
- 36 Petri M, Bechtel B, Dennis G, *et al.* Burden of corticosteroid use in patients with systemic lupus erythematosus: results from a Delphi panel. *Lupus* 2014;23:1006–13.