



**HAL**  
open science

## A Comparative In Vitro and In Vivo Study of Osteogenicity by Using Two Biomaterials and Two Human Mesenchymal Stem Cell Subtypes

L. Fievet, N. Serratrice, B. Brulin, L. Giraudo, J. Véran, N. Degardin, F. Sabatier, François Feron, P. Layrolle

► **To cite this version:**

L. Fievet, N. Serratrice, B. Brulin, L. Giraudo, J. Véran, et al.. A Comparative In Vitro and In Vivo Study of Osteogenicity by Using Two Biomaterials and Two Human Mesenchymal Stem Cell Subtypes. *Frontiers in Cell and Developmental Biology*, 2022, 10, pp.913539. 10.3389/fcell.2022.913539 . hal-03982079

**HAL Id: hal-03982079**

**<https://amu.hal.science/hal-03982079>**

Submitted on 24 Oct 2023

**HAL** is a multi-disciplinary open access archive for the deposit and dissemination of scientific research documents, whether they are published or not. The documents may come from teaching and research institutions in France or abroad, or from public or private research centers.

L'archive ouverte pluridisciplinaire **HAL**, est destinée au dépôt et à la diffusion de documents scientifiques de niveau recherche, publiés ou non, émanant des établissements d'enseignement et de recherche français ou étrangers, des laboratoires publics ou privés.



Distributed under a Creative Commons Attribution 4.0 International License



# A Comparative *In Vitro* and *In Vivo* Study of Osteogenicity by Using Two Biomaterials and Two Human Mesenchymal Stem Cell Subtypes

L. Fievet<sup>1\*†</sup>, N. Serratrice<sup>2,3†</sup>, B. Brulin<sup>4</sup>, L. Giraudo<sup>3</sup>, J. Véran<sup>3</sup>, N. Degardin<sup>5</sup>, F. Sabatier<sup>3</sup>, F. Féron<sup>3,6‡</sup> and P. Layrolle<sup>4‡</sup>

<sup>1</sup>Department of Pediatric Surgery, Centre Hospitalier Régional Henri Duffaut, Avignon, France, <sup>2</sup>Department of Neurosurgery, La Timone Hospital, Assistance Publique-Hôpitaux de Marseille, Marseille, France, <sup>3</sup>APHM, Culture and Cell Therapy Laboratory, Inserm CBT-1409, Centre d'Investigations Cliniques en Biothérapies, Marseille, France, <sup>4</sup>INSERM, UMR 1238, PHY-OS, Bone Sarcomas and Remodeling of Calcified Tissues, Faculty of Medicine, Nantes University Nantes, Nantes, France, <sup>5</sup>Department of Pediatric Surgery, La Timone Hospital, Assistance Publique-Hôpitaux de Marseille, Marseille, France, <sup>6</sup>Aix Marseille University, CNRS, INP, Marseille, France

## OPEN ACCESS

### Edited by:

Philippe Bourin,  
Independent Researcher, Toulouse,  
France

### Reviewed by:

Natalia Ocarino,  
Federal University of Minas Gerais,  
Brazil  
Maria Angelica Miglino,  
University of São Paulo, Brazil

### \*Correspondence:

L. Fievet  
luciefievet@hotmail.com

<sup>†</sup>These authors have contributed  
equally to this work

<sup>‡</sup>Equally supervising authors

### Specialty section:

This article was submitted to  
Stem Cell Research,  
a section of the journal  
Frontiers in Cell and Developmental  
Biology

Received: 05 April 2022

Accepted: 09 May 2022

Published: 30 May 2022

### Citation:

Fievet L, Serratrice N, Brulin B,  
Giraudo L, Véran J, Degardin N,  
Sabatier F, Féron F and Layrolle P  
(2022) A Comparative *In Vitro* and *In Vivo*  
Study of Osteogenicity by Using  
Two Biomaterials and Two Human  
Mesenchymal Stem Cell Subtypes.  
*Front. Cell Dev. Biol.* 10:913539.  
doi: 10.3389/fcell.2022.913539

**Background:** Bone repair induced by stem cells and biomaterials may represent an alternative to autologous bone grafting. Mesenchymal stromal/stem cells (MSCs), easily accessible in every human, are prototypical cells that can be tested, alone or with a biomaterial, for creating new osteoblasts. The aim of this study was to compare the efficiency of two biomaterials—biphasic calcium phosphate (BCP) and bioactive glass (BG)—when loaded with either adult bone marrow mesenchymal stem cells (BMMSCs) or newborn nasal ecto-mesenchymal stem cells (NE-MSCs), the latter being collected for further repair of lip cleft-associated bone loss.

**Materials and Methods:** BMMSCs were collected from two adults and NE-MSCs from two newborn infants. An *in vitro* study was performed in order to determine the best experimental conditions for adhesion, viability, proliferation and osteoblastic differentiation on BCP or BG granules. Bone-associated morphological changes and gene expression modifications were quantified using histological and molecular techniques. The *in vivo* study was based on the subcutaneous implantation in nude mice of the biomaterials, loaded or not with one of the two cell types. Eight weeks after, bone formation was assessed using histological and electron microscopy techniques.

**Results:** Both cell types—BMMSC and NE-MSC—display the typical stem cell surface markers—CD73+, CD90+, CD105+, nestin - and exhibit the MSC-associated osteogenic, chondrogenic and adipogenic multipotency. NE-MSCs produce less collagen and alkaline

**Abbreviations:** MSC, mesenchymal stromal/stem cell; hMSC, human mesenchymal stem cell; BMMSC, bone marrow derived MSC; OE-MSC, olfactory ecto-mesenchymal stem cell; NE-MSC, nasal ecto-mesenchymal stem cell; GMP, good manufacturing practice; BCP, biphasic calcium phosphate; HA, hydroxyapatite;  $\beta$ TCP, beta-tricalcium phosphate; BG, bioactive glass; PBS, phosphate buffered saline; CPS, calcium phosphate supersaturated solution; RT, room temperature; PFA, paraformaldehyde; pNPP, p-Nitrophenyl phosphate; RTqPCR, real time quantitative PCR; GAPDH, glyceraldehyde 3-phosphate dehydrogenase; B2M, beta-2-microglobulin; RUNX2, RUNX family transcription factor 2; BSP, bone sialoprotein; COLA1, collagen A1; OC, osteocalcin; BMP2, bone morphogenic protein 2; BMP4, bone morphogenic protein 4; ALP, alkaline phosphatase; OP, osteopontin; SEM, scanning electron microscopy; SD, standard deviation.

phosphatase than BMMSCs. At the transcript level, NE-MSCs express more abundantly three genes coding for bone sialoprotein, osteocalcin and osteopontin while BMMSCs produce extra copies of RunX2. BMMSCs and NE-MSCs adhere and survive on BCP and BG. *In vivo* experiments reveal that bone formation is only observed with BMMSCs transplanted on BCP biomaterial.

**Conclusion:** Although belonging to the same superfamily of mesenchymal stem cells, BMMSCs and NE-MSCs exhibit striking differences, *in vitro* and *in vivo*. For future clinical applications, the association of BMMSCs with BCP biomaterial seems to be the most promising.

**Keywords:** bone marrow, nose, human mesenchymal stem/stromal cells, osteoinduction, biomaterials, biphasic calcium phosphate, bioactive glasses

## HIGHLIGHTS

- Comparison of osteo-induction capacity of human adult bone marrow mesenchymal stem cells (BMMSCs) vs. child nasal ecto-mesenchymal stem cells (NE-MSCs) on BCP and BG biomaterials
- Both MSC subtypes adhere, proliferate, differentiate in osteoblasts and produce a mineralized extracellular matrix *in vitro*
- BMMSCs associated to BCP are more prone to induce bone formation *in vivo*
- Variations in osteoblastic gene expression may explain such a discrepancy

## INTRODUCTION

Biomaterial- and stem cell-associated bone repair represents a very promising alternative to autologous bone grafting. The most commonly investigated cells are mesenchymal stem cells (MSCs) (Hosseinpour et al., 2017; Luby et al., 2019; Hutchings et al., 2020; Donsante et al., 2021; Raghav et al., 2022). Among them, bone marrow-derived MSCs (BMMSCs) tend to be considered as the gold standard due to their capacity, in combination with biomaterial scaffolds, to repair bones *in vivo* (Arthur et Gronthos, 2020; Khorasani et al., 2021). However, other sources of MSCs have been poorly investigated (Gonzalez-Vilchis et al., 2022). Our laboratory identified and purified, from the *lamina propria* of the human olfactory mucosa, ecto-mesenchymal stem cells that originate from the neural crest and reside in the craniofacial area during adulthood (Féron et al., 2013; Veron et al., 2018). When compared to BMMSCs, nasal ecto-mesenchymal stem cells (NE-MSCs) display an inclination to differentiate into osteoblasts, rather than chondrocytes or adipocytes, and produce mineralized bone tissue *in vivo* after being filled on calcium phosphate ceramic discs and implanted subcutaneously in nude mice (Delorme et al., 2010).

Many biomaterials have been developed to offer surgeons and patients safe alternatives to autologous bone graft, a limited resource that adds morbidity at the harvesting site. The most commonly used are composed of biphasic calcium phosphate

(BCP), a mixture of hydroxyapatite (HA)/beta-tricalcium phosphate ( $\beta$ TCP), similar to the mineral bone composition, but they display an insufficient osteoinductive capacity to regenerate large bone defects. BMMSCs, inserted in porous calcium phosphate ceramics, induce bone formation when implanted under the skin of nude mice or in rat or pig femurs (Dahl et al., 2014; Bouler et al., 2017; Ebrahimi et al., 2017). This BMMSC + BCP combination has even demonstrated safe bone regeneration in clinical trials (Hosseinpour et al., 2017).

Most recently, a synthetic bioactive glass (BG) or bioglass (bioglass 45S5 or GlassBONE™) has also been used for bone regeneration in orthopaedic, traumatic, spinal and cranio-maxillo-facial surgery (Profeta et al., 2016; Cannio et al., 2021; Liang et al., 2021). Based on borate and borosilicate, BG enhances bone and underlying neocartilage formation when compared to silicate bioactive glass (Rizwan et al., 2017). Moreover, borate-based BG displays controllable degradation rates and can be doped with trace quantities of elements such as Cu, Zn, and Sr, which are known to be beneficial for healthy bone growth. In addition, it has been observed that BG promotes angiogenesis which is critical in bone tissue regeneration (Kargozar et al., 2018).

Bone repair induced by stem cells and biomaterials may represent an alternative to autologous bone grafting. Numerous studies have demonstrated the effects of stem cells and biomaterials association on bone repair. However, studies using NE-MSCs and biomaterials are scarce, especially as a potential source of cells for repairing cleft palates. For that purpose, we designed a study comparing the osteogenic capacity of human mesenchymal stem cells (hMSC), derived from either adult bone marrow or newborn nasal cavity, associated with BCP or BG biomaterials, *in vitro* and after *subcutis* implantation in nude mice.

## MATERIALS AND METHODS

### Donors

Bone marrow aspirates were obtained from the iliac crest by standard puncture and aspiration of healthy human male donors (21 and 26 years old), after having provided informed consent, according to the Declaration of Helsinki. The project

approved by the Ethical Committee of ULM University. GMP grade BMMSCs were expanded according to previously published protocols (Brennan et al., 2014). In brief, BMMSCs were isolated from heparinized bone marrow aspirates by seeding 50,000 white blood cells/cm<sup>2</sup> on two-chamber CellStacks (Corning/VWR, Ulm, Germany) in  $\alpha$ -MEM culture medium (Lonza, Basel, Switzerland) supplemented with 5% GMP-grade human platelet lysate (PL) (IKT, Ulm, Germany) in order to avoid animal products. Cells were cultured for 10 or 14 days and the culture medium was changed twice per week. Cells were passaged at the density of 4,000 BM-MSCs/cm<sup>2</sup> on two-chamber CellStacks in  $\alpha$ -MEM supplemented with 8% PL for a further 5 or 7 days.

Male newborn NE-MSCs, purified from the nasal mucosa, were collected during a scheduled intervention for closing a cleft palate, under general anaesthesia. The procedure was approved by an ethical committee (CPP, RCB: 2015-A00984-45). Two infants were included in this pilot study. Biopsies were sliced in small pieces and incubated in 1.5 ml of collagenase (NB5, 1 U/ml, Nordmark Biochemicals) for 60 min at 37°C, before being mechanically dissociated. After digestion, 7 ml of serum-containing culture medium were added. After centrifugation, the cell pellet was resuspended in DMEM/HAM culture medium supplemented with antibiotics (penicillin/gentamicin and fungizone, Gibco™), and fetal calf serum (FCS) (Thermo Fisher Scientific, Waltham, Massachusetts, United States) on 25 cm<sup>2</sup> plates. After 10 days, the cells were replated at the density of 4,000 cells/cm<sup>2</sup> on 175 cm<sup>2</sup> plates. At confluency, cells were detached with trypsin/EDTA 0.05% (Thermo Fisher) and collected NE-MSCs were stored in liquid nitrogen. Banking of stem cells for scientific research was performed anonymously, according to the rules of the Ministry of Higher Education and Research (number N DC-2011-1331).

### hMSC Characterization by Flow Cytometry

hMSC characterization by flow cytometry was performed on cells before seeding on biomaterials to demonstrate their characteristics as defined by the ISCT criteria (Dominici et al., 2006). hMSC were stained with CD90-FITC, CD73-PE, CD105-PC7, CD45-APC-A750 antibodies (Beckman Coulter, Brea, California, United States), or corresponding isotype controls in matched concentration, 20 min at room temperature (RT) and in the dark. Cells were washed in PBS without Ca<sup>2+</sup>/Mg<sup>2+</sup> (Thermo Fisher), fixed, and permeabilized (IntraPrep Permeabilization Kit, Beckman Coulter). Intracellular staining was performed by an indirect immunofluorescence method with an adapted dilution of Nestin antibody (Merck Millipore, Burlington, Massachusetts, United States), or its corresponding isotype control in matched concentration, and with an Alexa Fluor 647 goat anti-mouse IgG (H + L) secondary antibody (Thermo Fisher). After washing, cells were analyzed with a NAVIOS flow cytometer (Beckman Coulter) and data files were interpreted using Kaluza software (Beckman Coulter).

### Tri-Lineage Differentiation Capacity of Expanded MSCs

- *Osteogenic differentiation*: both BMMSCs and NE-MSCs were plated at the density of  $5 \times 10^3$  cells/cm<sup>2</sup> in 24 well

plates in basal media. After 1 day, MSC differentiation towards an osteogenic lineage was induced with standard osteogenic supplements (10 mM  $\beta$ -glycerol-phosphate, 250  $\mu$ M ascorbic acid, and 100 nM dexamethasone). At D7/14/21, cells were fixed with 4% paraformaldehyde (PFA) and mineralization was assessed by staining with a 40 mM alizarin red solution (pH 4.1–4.3).

- *Adipogenic differentiation*: MSCs were plated at the density of  $2 \times 10^4$  cells/cm<sup>2</sup> in 24 well plates. Cells were cultured until reaching 80% confluency in basal media and then induced towards adipogenic lineage with the StemPro™ Adipogenesis Differentiation kit (Thermo Fisher). At D14/21, cells were fixed with 4% PFA and adipocytes stained with Oil Red O solution in 2-propanol diluted to 60%, using deionized water.
- *Chondrogenic differentiation*: collected MSCs were loaded into 15 ml tubes ( $5 \times 10^5$  cells/tube) in fresh basal media and centrifuged at 1,500 rpm during 5 min. After 24 h, the basal medium was removed and StemPro™ Chondrogenesis Differentiation kit (Thermo Fisher) was added to the cell pellet. At D14/21, cell pellets were fixed in 4% PFA, and embedded in paraffin. Fixed pellets were cut with a microtome and stained with Alcian blue (Merck KGaA).

### Biomaterials

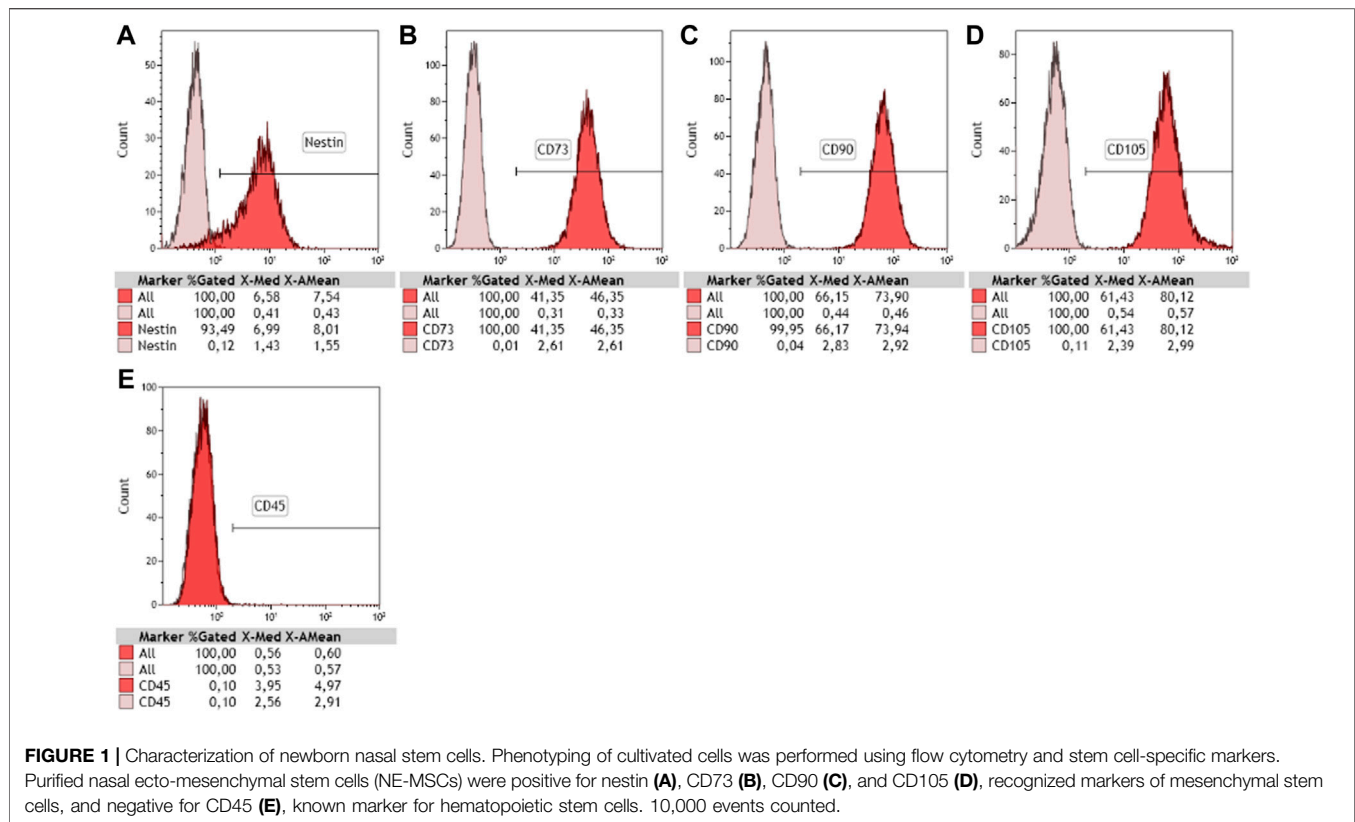
Two biomaterial scaffolds were compared: macro/microporous BCP granules 0.5–1 mm in size (MBCP<sup>+</sup>, Biomatlante, Vigneux de Betagne, France), and BG granules 0.5–1 mm in size (GlassBONE™, Noraker, Villeurbanne, France). BCP is a ceramic composed of HA/ $\beta$ TCP in a ratio of 20/80 by weight. BG 45S5 composed of 45 wt.% SiO<sub>2</sub>, 24.5 wt.% Na<sup>2</sup>O and 24.5 wt.% CaO (Rizwan et al., 2017).

### Bioactive Glass Pre-Incubation

BG granules were incubated in 1 ml of phosphate buffered saline (PBS) for 5 h, leading to a highly basic pH 10. In order to get a neutral pH, the BG granules (90 mg) were incubated overnight in 1 ml of a calcium phosphate supersaturated solution (CPS), including 4 mm CaCl<sub>2</sub>·2H<sub>2</sub>O and 2 mm of Na<sub>2</sub>HPO<sub>4</sub>·2H<sub>2</sub>O in 0.9% NaCl buffered at pH 7.4 with TRIS/HCl. After an overnight soaking in CPS, the pH of the supernatant remained at 9. Based on these results, it was decided to seed the cells directly on the biomaterials without pre-incubation.

### Culture of MSCs With Biomaterials

Culture of human BMMSCs and NE-MSCs with biomaterials performed in Corning® Costar® ultra-low attachment 24 well plates (Merck KGaA, Darmstadt, Germany) with  $\alpha$ -MEM (Thermo Fisher), supplemented with 8% human PL and 1% penicillin/streptomycin for 2–3 weeks (50 mg BCP or 90 mg BG per well). Cell seeding was done in static condition with 200,000 cells suspended in 250  $\mu$ l of culture medium and seeded on 50 mg of BCP or 90 mg of GB per well in 24-well ULA plate (Corning®). The quantity of biomaterials was adapted to cover the entire surface of the well based on their respective density. The volume of cell suspension was adjusted for homogeneously seeding the biomaterial granules.



**FIGURE 1 |** Characterization of newborn nasal stem cells. Phenotyping of cultivated cells was performed using flow cytometry and stem cell-specific markers. Purified nasal ecto-mesenchymal stem cells (NE-MSCs) were positive for nestin (A), CD73 (B), CD90 (C), and CD105 (D), recognized markers of mesenchymal stem cells, and negative for CD45 (E), known marker for hematopoietic stem cells. 10,000 events counted.

## Adhesion of MSCs on Biomaterials

200,000 cells were seeded on biomaterials in 250  $\mu$ l of culture medium in 24 well ULA plate. After 1 h, 250  $\mu$ l of medium was added. After 24 h, 500  $\mu$ l of medium were added. The medium was changed 1 day after, and then every 3 days. Adhesion was assessed using TM3000 scanning electron microscope (Hitachi, Krefeld, Germany), operating at an acceleration voltage of 5 kV, and imaged at a magnification of 50 $\times$ -500 $\times$ , after fixation and dehydration of the cells in ethanol.

## Viability of MSCs

20,000 cells per well ( $1.05 \times 10^4$  cells/cm<sup>2</sup>) were seeded in 24 well plate in basal media. Cells were seeded in 0.5 ml of media and the media was changed after 24 h. Then, media were changed every 3 days. Cell viability on biomaterials was evaluated at D2/7/14/21 by staining live cells with the fluorescent green stain calcein (1.25  $\mu$ l/ml) and dead cells with fluorescent red ethidium homodimer-1 (1  $\mu$ l/ml), according to Invitrogen™ L-3224 kit recommendations (Thermo Fisher).

## Proliferation of MSCs

Cell proliferation was assessed for 21 days using alamarBlue® assay (Thermo Fisher). BMMSCs and NE-MSCs were seeded on 2D plastic (respectively at 500 and 5,000 cell/cm<sup>2</sup>), and on BCP and BP biomaterials. DNA assay has been done to calculate the relative amount of ALP normalised per cell. See section “ALP quantification”: At D1 and D7, MSCs were lysed using 0.1% Triton x-100, 5 mm Tris-HCL pH8 solution. After three freeze/

thaw cycles, the amount of double stranded DNA was measured in the supernatants, using a fluorescent Quant-iT Picogreen dsDNA Assay kit (Thermo Fisher).

## Collagen Production

Collagen was visualized at D7/14/21 with Sirius red staining after culturing both cell types in proliferation or osteogenic culture media as previously described. Cells were fixed with 4% PFA in PBS for 20 min at RT, washed two times in PBS and stained with 1 ml of 1 mg/ml of Direct red solution (Merck KGaA) in saturated aqueous solution of picric acid (Merck KGaA), for 1 h at RT.

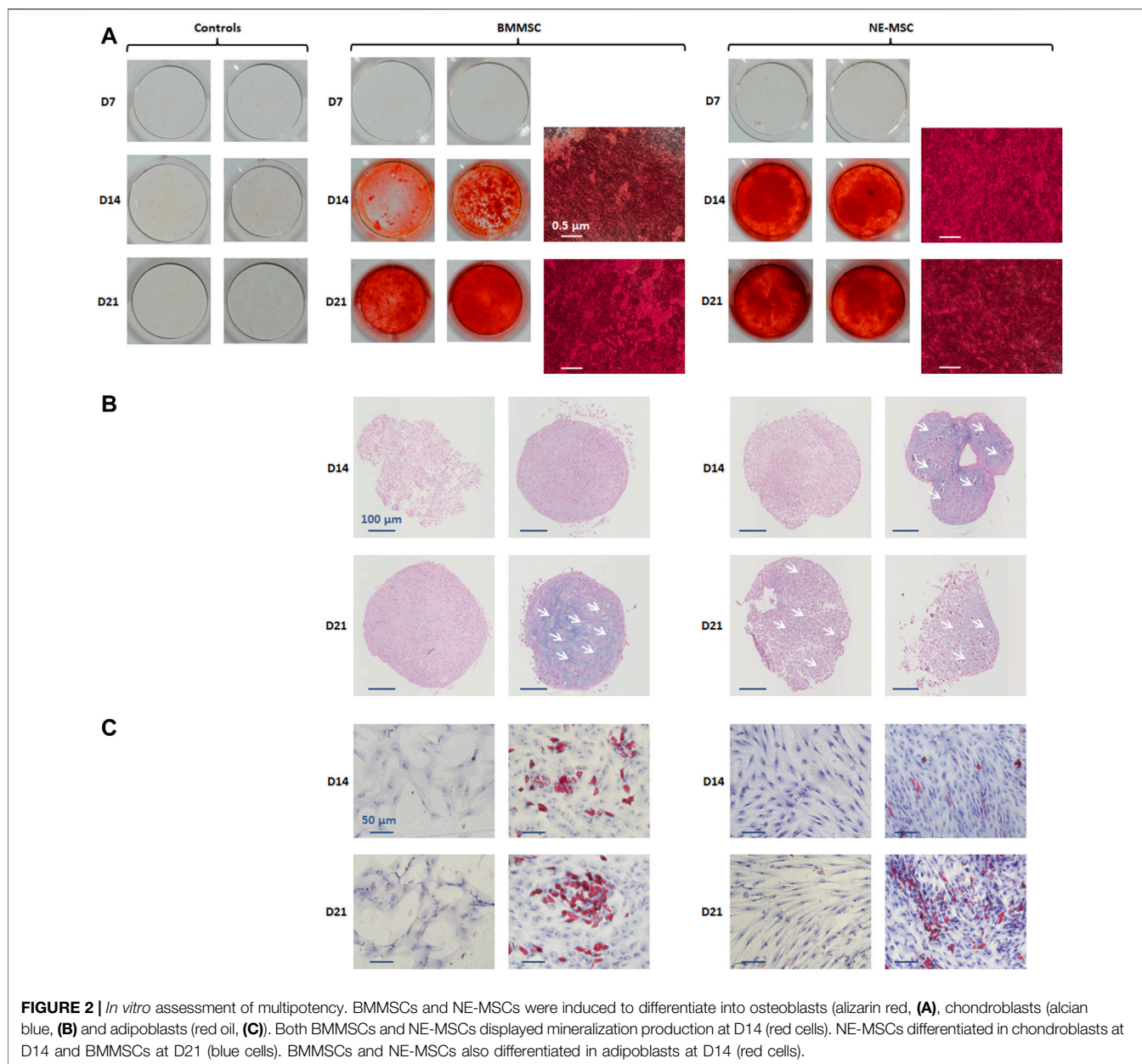
## Extracellular Alkaline Phosphate

ALP was qualitatively evaluated at D7/14/21 with Fast-Violet B Salt and Naphthol-AS-MX ALP staining (Merck KGaA). Cells were fixed with a solution, containing two volumes of citric acid-sodium citrate (1.5 mol/l) and three volumes of acetone for 30 s at RT. Cells were rinsed with deionized water and incubated, for 30 min in the dark, with a 50 ml staining solution. Including 48 ml of distilled water, 12 mg of Fast-Violet B Salt (F1631, Merck KGaA), and 2 ml of Naphthol-AS-MX ALP solution (855, Merck KGaA).

## ALP Quantification

At D1 and D7, MSCs were lysed using 0.1% Triton x-100, 5 mm Tris-HCL pH8 solution. After three freeze/thaw cycles, the amount of double stranded DNA was measured in the





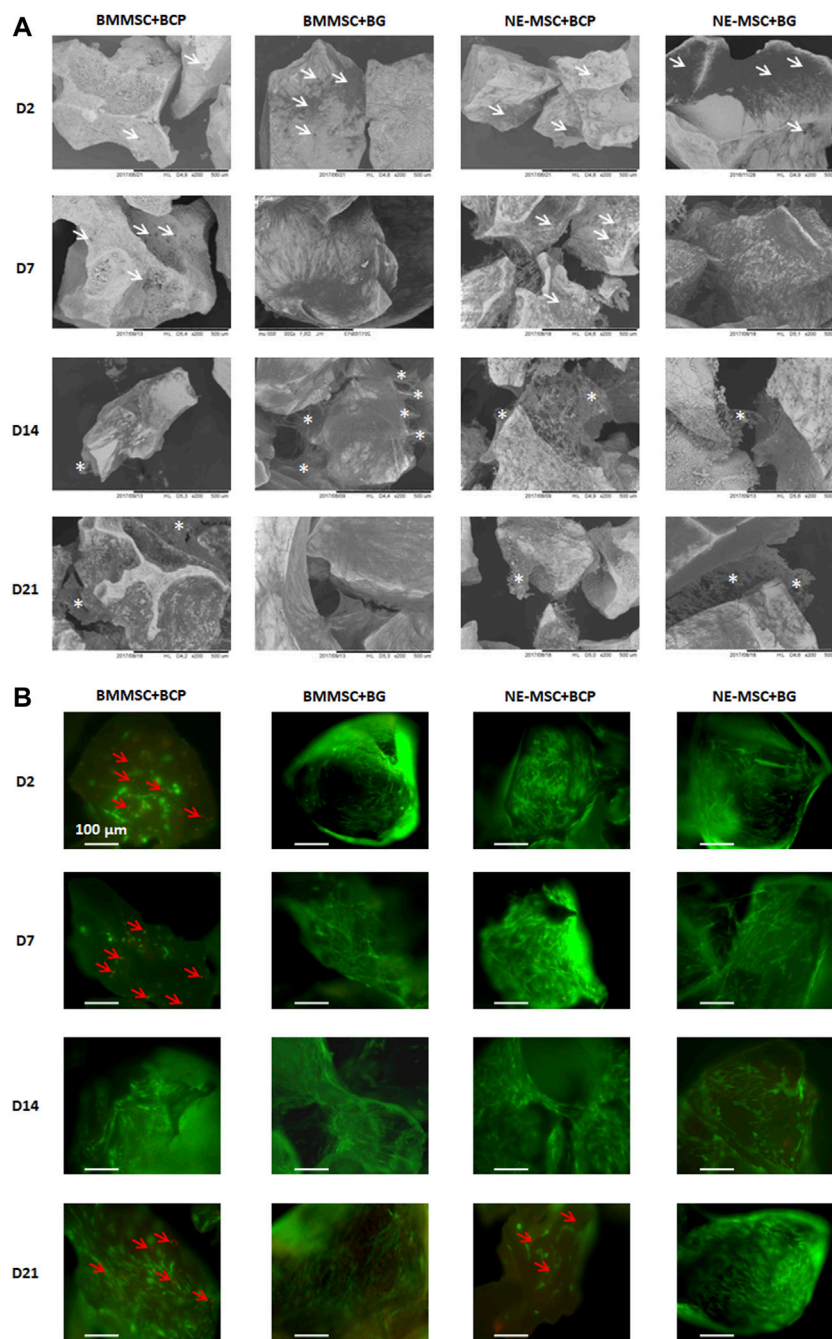
supernatants, using a fluorescent Quant-iT Picogreen dsDNA Assay kit (Thermo Fisher). The amount of ALP was measured using SigmaFast™ p-Nitrophenyl phosphate (pNPP) tablets (Merck KGaA). A standard curve was established with serial dilutions of pNPP and a known quantity of ALP from bovine intestinal mucosa (Merck KGaA). A known amount of pNPP was added to each sample, prior to incubation, during 30 min at 37°C. The amount of product (p-nitrophenol) was determined by reading the absorbance at 405 nm, on a microplate reader, and the amount of ALP was quantified using the following equation:

$$ALP(U/mL) = A/V/T$$

were *A*, pNPP in  $\mu\text{mol}$ ; *V*, volume of sample in *mL*; *T*, time of incubation in minutes.

## Osteoblastic Differentiation by Real Time Quantitative PCR

Total RNA was extracted from cultivated cells with DirectZol™ RNA MiniPrep (Zymo Research, Irvine, California, United States) at D1 and D7. The RNA samples (1  $\mu\text{g}$  each) was reverse transcribed with the maxima H minus First Strand cDNA Synthesis kit (Thermo Fisher) and oligo-dT primers in a final volume of 20  $\mu\text{l}$ . The expression of each target gene was normalized with glyceraldehyde 3-phosphate dehydrogenase (GAPDH) and beta-2-microglobulin (B2M). The  $2^{-\Delta\Delta C_t}$  method was used to calculate relative expression levels. The relative gene expression was normalized at D1 on plastic. The expression of the different bone-coding genes was assessed by RTqPCR.



**FIGURE 3 | (A)** Comparative adhesion of the two MSC types on biomaterials using SEM. Both BM-MSCs and NE-MSCs rapidly adhere to BCP and BG (white arrows) and synthesize an extracellular matrix at D14 (white asterisks). **(B)** Comparative viability of the two MSC types on biomaterials using fluorescent stains for living (green) and dead (red) cells (red arrows). BG, and not BCP, induces cell death, as early as D2 for BM-MSCs, and only at D21 for NE-MSCs.

## Primers

RUNX Family Transcription Factor 2 (*human RUNX2/F: gcctag gcgatttcaga; human RUNX2/R: gctcttctactgagagtgaagg*), Bone sialoprotein (*human BSP/F: caatctgtccactactgc; human BSP /R: cagtcttcatttgggtattgc*), Collagen Type I Alpha 1 Chain (*human COL1A1/F: ctggacctaaaggtgctgct; human COL1A1/R: gtccagcctc*

*ccatcttt*), Osteocalcin (*human OC/F: tgagagcctcacactctc; human OC/R: ctggagaggagcagaactgg*), Bone morphogenetic protein 2 (*human BMP2/F: gttcggcctgaaacagagac; human BMP2/R: ccaacc tgggtccaaaagt*), Bone morphogenetic protein 4 (*human BMP4/F: tcaagattggctgtcaagaatgat; human BMP4 /R: caggtatcaaaactagcat ggetcg*), Alkaline phosphatase (*human ALP/F: aacaccaccagggg*

*aac*; human ALP/R: *ggtcacaatgccacagatt*), and Osteogenic protein (human OP/F: *gaggccttggtgtcagc*; human OP/R: *caattc tcatgtagtgagtttcc*).

## In Vivo Experiments

The *in vivo* experiment was conducted according to the European regulation (Directive 2010/63/UE). The approval of the study was obtained from the local ethical committee on animal experiment (number 6575). Eighteen 7 week-old female nude mice were used (NMRI nu/nu, Janvier Labs). Six groups were considered: BCP; BMMSC + BCP; NE-MSc + BCP; BG; BMMSC + BG; NE-MSc + BG on 50 mg of BCP or 90 mg of BG. No pre-treatment was performed with BG granules.  $2 \times 10^6$  cells were seeded on biomaterial granules and incubated overnight at 37°C with 5% CO<sub>2</sub>, prior to implantation. Two identical subcutaneous implantation per mouse were performed. For statistical purpose, six implants per group were considered. Animals were operated under general anaesthesia with Isoflurane (Abbvie, North Chicago, Illinois, United States). A centimetric skin incision was performed on each side of mouse spine. Subcutaneous pockets were filled with granules, embedded with or without MSCs. Wounds were closed with non-resorbable suture 4.0 Filapeau (Péters Surgicals, Bobigny, France). Animals were controlled every day post-surgery, to monitor the healing of the skin and behavioural anomalies. Eight weeks post-implantation, animals were euthanized, and implants were fixed in 4% PFA.

## Histology

BCP and BG samples were dehydrated and embedded in poly-methyl-methacrylate resin (Merck KGaA). Sections were performed with Leica SP1600 microtome (Wetzlar, Germany), and bone formation was visualized by SEM. BCP samples were decalcified in Decalc (Microm Microtech, Brignais, France), dehydrated in ascending series of alcohol, and embedded in paraffin 4 µm-thin sections were cut with a microtome in the middle of the implant. Sections were stained by Masson trichrome in order to visualise newly formed bone tissue, granules, fibrosis, vascularization and cells. Toxicity and biodegradation of biomaterials were also determined.

## Statistics

When possible, numerical variables are reported by mean  $\pm$  standard deviation. Qualitative variables are reported by frequency and percentage. Data processing and statistical analyses were performed with XLSTAT software (Microsoft, Redmond, Washington, United States). *p*-values less than 0.05 were considered significant. The results were expressed as mean  $\pm$  standard deviation (SD).

## RESULTS

### Newborn Nasal Stem Cells Display an NE-MSc Phenotype

Human newborn nasal cells being cultivated for the first time in the team, we first assessed their stemness. NE-MScs express

nestin (Figure 1A), a widely recognized marker for stem cells. In addition, they produce CD73, CD90 and CD105 (Figures 1B–D), as documented for adult nasal olfactory ecto-mesenchymal stem cells, and not CD45, a specific hematopoietic stem cell marker (Figure 1E).

### In Vitro Assessment of Stem Cell Multipotency

We compared the capacity of both MSC types to differentiate *in vitro* into osteoblasts, chondroblasts and adipoblasts, using the usual stains: alizarin red (Figure 2A), alcian blue (Figure 2B), and red oil (Figure 2C). BMMSCs and NE-MScs display an intense mineralization at D14 and exhibit a similar pattern of differentiation for chondroblasts and adipoblasts.

### BMMSCs and NE-MScs Adhere and Survive on Biomaterials

BCP and BG had similar shape and size but different surface microstructures in SEM, BCP particles showed microporosity, whereas BG exhibited a smooth surface (Figure 3A). Both BMMSCs and NE-MScs adhere to BCP and BG, more rapidly to BG than to BCP (white arrows). BMMSCs synthesized an extracellular matrix after D14, which seems to be more abundant on BG than on BCP, but mineralization was only observed on BCP (white asterisks). NE-MScs produced also an abundant but fragile mineralized extracellular matrix on both biomaterials, less on BG than on BCP (white asterisks).

Using fluorescent stains for living (green) and dead (red) cells, BMMSCs and NE-MScs viability was kinematically assessed. Dead cells (red arrows) are observed only on BCP biomaterial. Death of NE-MScs was only observed at D21 while apoptosis/necrosis of BMMSCs starts as soon as D2, a possible indication that NE-MScs are more resistant to a relatively adverse material.

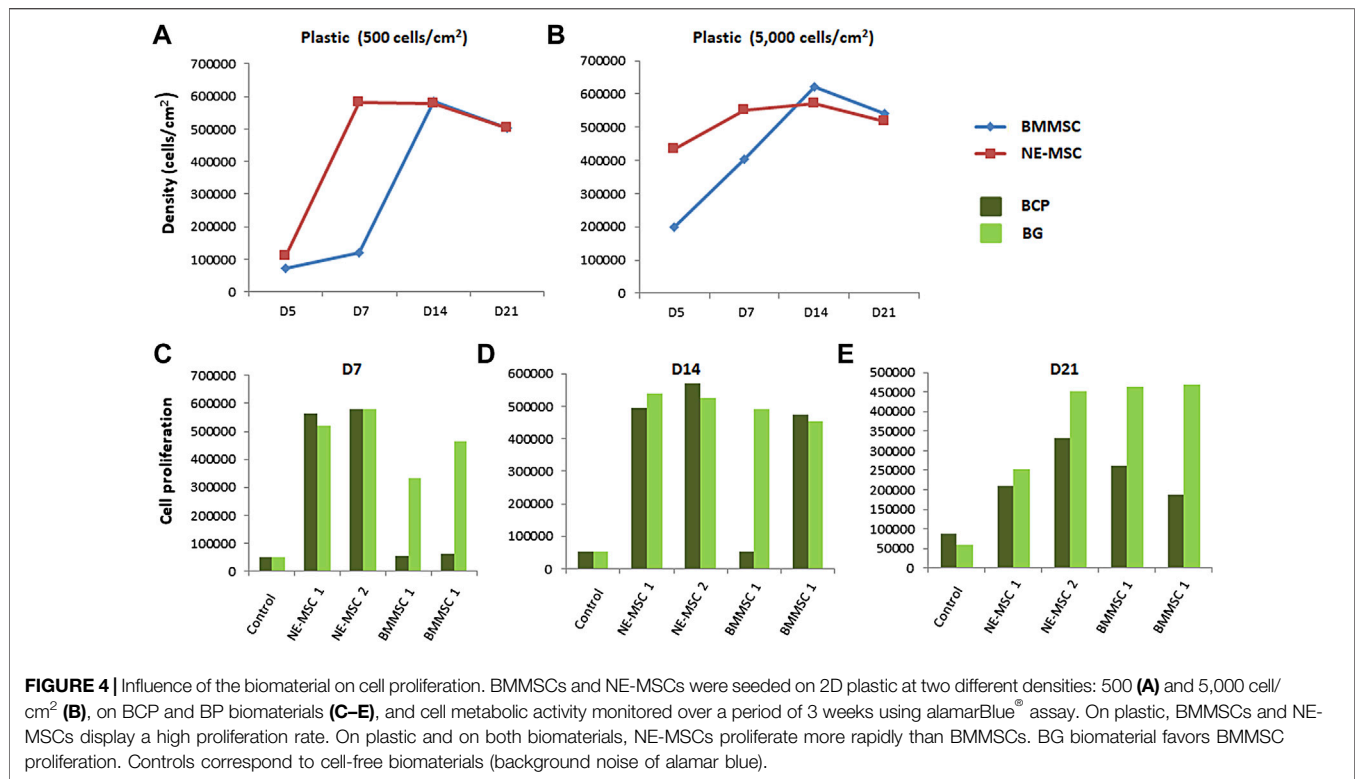
### BMMSCs Display a Higher Proliferation on BG Biomaterial

On plastic, BMMSCs and NE-MScs display a high proliferation rate, although stem cells from newborns outweigh adult stem cells (Delorme et al., 2010). It was then questionable to confirm this finding when using biomaterials. Figure 4 indicates that, on both biomaterials, NE-MScs proliferate more rapidly than BMMSCs at the start of the experiment. However, at D14, the numbers are even and, subsequently, due to cell death occurring at this stage (see above), the density of both MSCs declines (Figures 4A,B). Figures 4C–E indicate that BG favors BMMSC proliferation, a result in line with an increased viability of BMMSC viability on BG, when compared to BCP (Figure 3B). No difference between the two materials was observed for NE-MScs.

### Collagen Production Increases in BMMSCs and Decreases in NE-MScs

BMMSCs produce more collagen, a chondrocytic and osteogenic specific marker (Sirius red staining), than NE-MScs. Noticeably,





collagen expression timely increases in BMMSCs and declines in NE-MSCs (Figure 5A).

## BMMSCs Produce ALP Only on BG Biomaterial

BMMSCs and NE-MSCs produced ALP on plastic (Figure 5B). At D7, BMMSCs express ALP only when cultivated on BG, while NE-MSCs produce ALP on both biomaterials with a higher production in proliferative medium (Figure 5C). To move further and quantify ALP production in various conditions, we assessed its expression in accordance with cell abundance (Figures 6A,B). NE-MSCs express an important amount of ALP when grown on BG in osteogenic conditions, and conversely is negligible on BCP, except at D1 (Figure 6C).

## A Differentiated Expression of Osteoblast-Associated Genes

Discrepancies between both MSCs further analyzed by measuring the expression of eight bone-associated genes at D1 and D7 on both biomaterials (Figure 7). Normalization of gene expression was performed using the amount expressed by BMMSCs at D1 on BCP, as basal level. When cultivated on BG, NE-MSCs overexpress the genes coding for BSP, OC and OP (Figures 7A–C). Conversely, on the same biomaterial, BMMSCs produce a higher number of transcripts coding for RUNX2 (Figure 7D). No significant difference between the two groups was noted for other genes (Figures 8A,C,D). ALP gene expression exhibited quite similar variations to ALP in culture

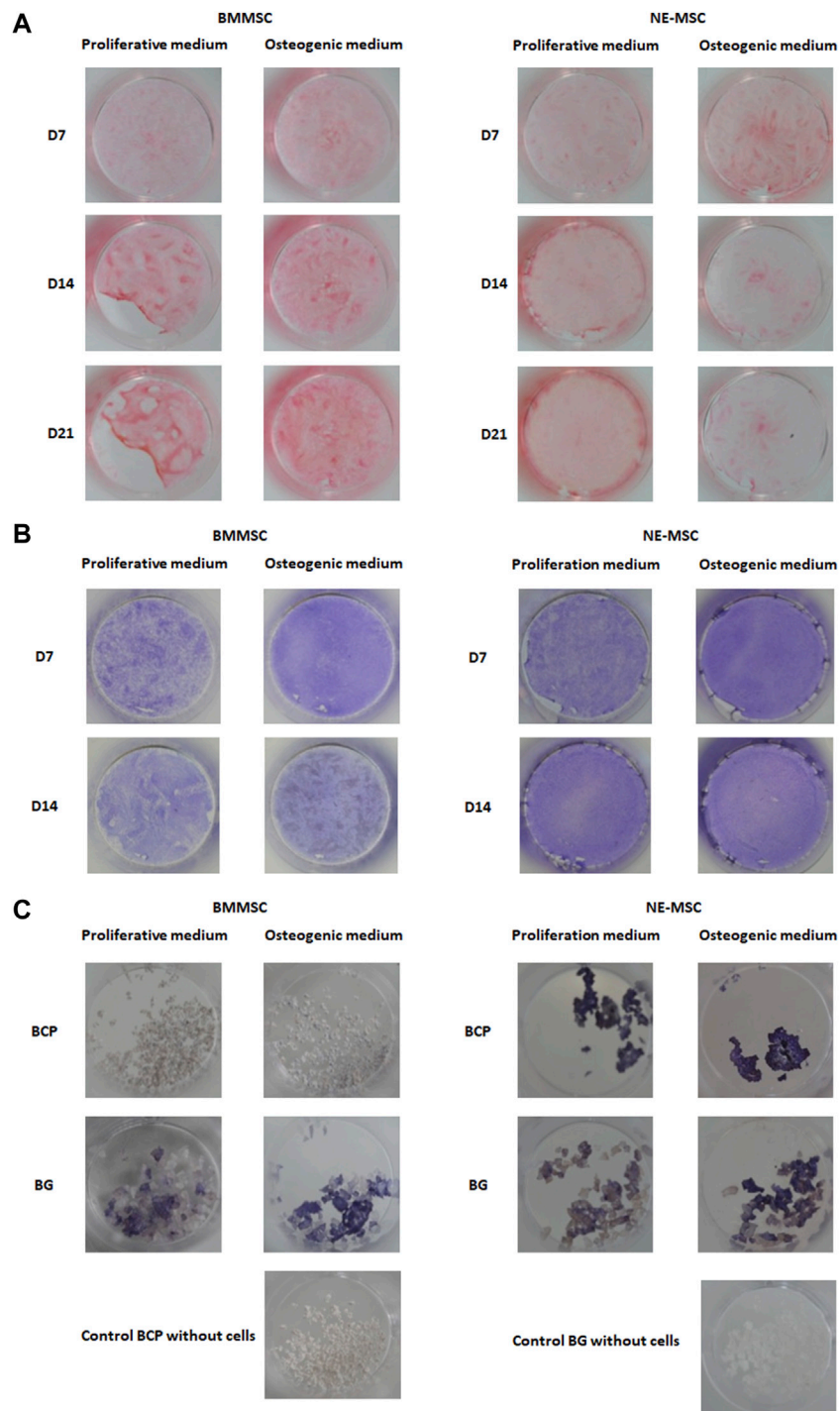
supernatant, except for BCP at D1 (Figure 8B). No data are provided for BCP at D7 because a very small amount of RNA was extracted. This may be due to the failure of cell adhesion and proliferation on BCP, which can also explain the absence of correlation between ALP quantification and ALP gene expression at D1 on BCP. Indeed, reproducibility of experiment was affected by the absence of pre-incubation of BCP in culture medium prior to cell seeding.

## In Vivo Experiments

Eight weeks after subcutaneous implantation in nude mice, none of the cell-free BG was found to harbor bone tissue, the BG granules were only surrounded by vascularized fibrous tissue (Figure 9A). No bone formation was either observed on the same biomaterial loaded with BMMSCs or NE-MSCs (Figure 9C). BMMSCs gave rise to bone tissue when grafted on BCP (Figures 9A,B). Conversely, NE-MSCs failed to produce osteoblasts (Figures 9A,B). Figure 9D resumes *in vivo* findings. No sign of systemic or local toxicity, no infection, and no behavioral change were observed with both biomaterials, with or without MSCs.

## DISCUSSION

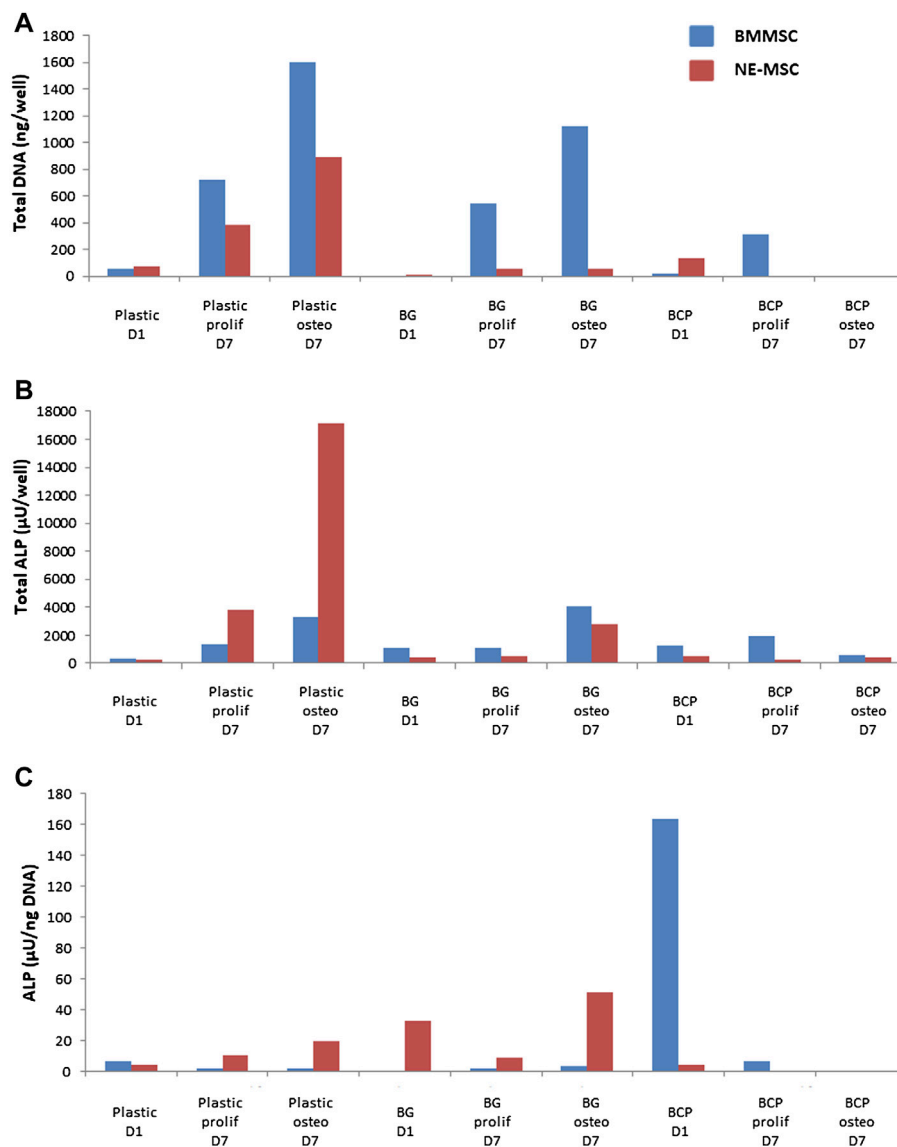
In this study, we compared the *in vivo* osteoinduction potential of hMSCs derived from either bone marrow or child nose, associated with BCP or BG, two synthetic bone fillers currently used for their favorable bioactivity and osteoconductive properties (Ben Azouna et al., 2012; Leotot



**FIGURE 5 | (A)** Comparative production of collagen. In osteogenic conditions, BMMSCs increasingly produce collagen while the opposite is observed for NE-MSCs. Comparative production of ALP by both cell types, at D7. BMMSCs and NE-MSCs were cultivated either on plastic **(B)** or biomaterials **(C)**. BMMSCs express ALP only when cultivated on BG biomaterial while NE-MSCs produce ALP on both biomaterials. For NE-MSCs, ALP production is higher in proliferative medium.

et al., 2013). Alone these biomaterials have insufficient osteoinductive properties to regenerate large bone defects. Combinations of hMSCs and BCP have been shown to induce *de novo* bone in ectopic sites and thus, have been widely studied *in*

*in vivo* as alternatives to autologous bone grafts (Leotot et al., 2013; Brennan et al., 2014; Gjerde et al., 2018). On the opposite, combinations of MSCs and BG have been mainly studied *in vitro*, but poorly *in vivo* (Liang et al., 2021).

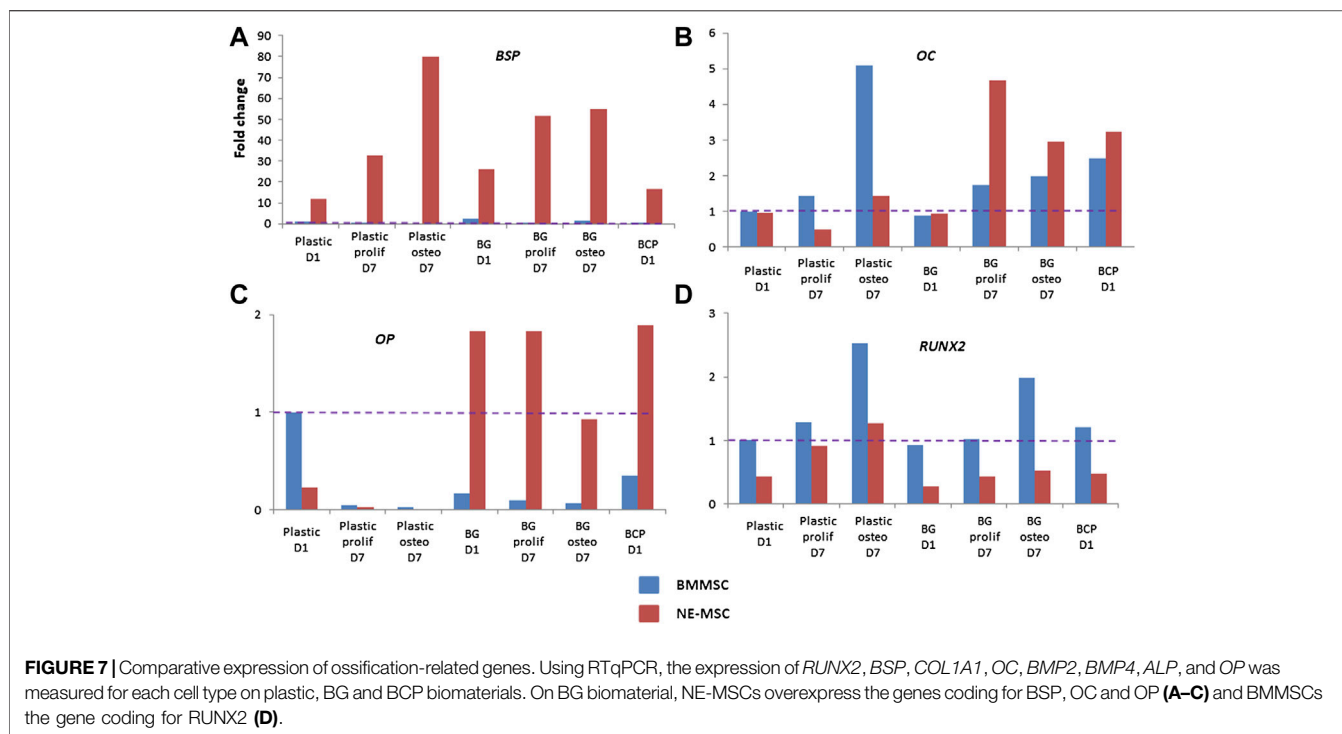


**FIGURE 6** | Quantification of alkaline phosphatase (ALP). For the purpose of comparison, the total amount of DNA, at D1 and D7, was quantified for both cell types, BMMSCs and NE-MSCs, in proliferative and osteogenic conditions (A). The total amount of ALP in each condition was assessed (B) and then compared to the amount of DNA (C). NE-MSCs express an important amount of ALP when grown on BG, in osteogenic conditions. For BMMSCs, ALP expression is marginal except at D1 on BCP biomaterial.

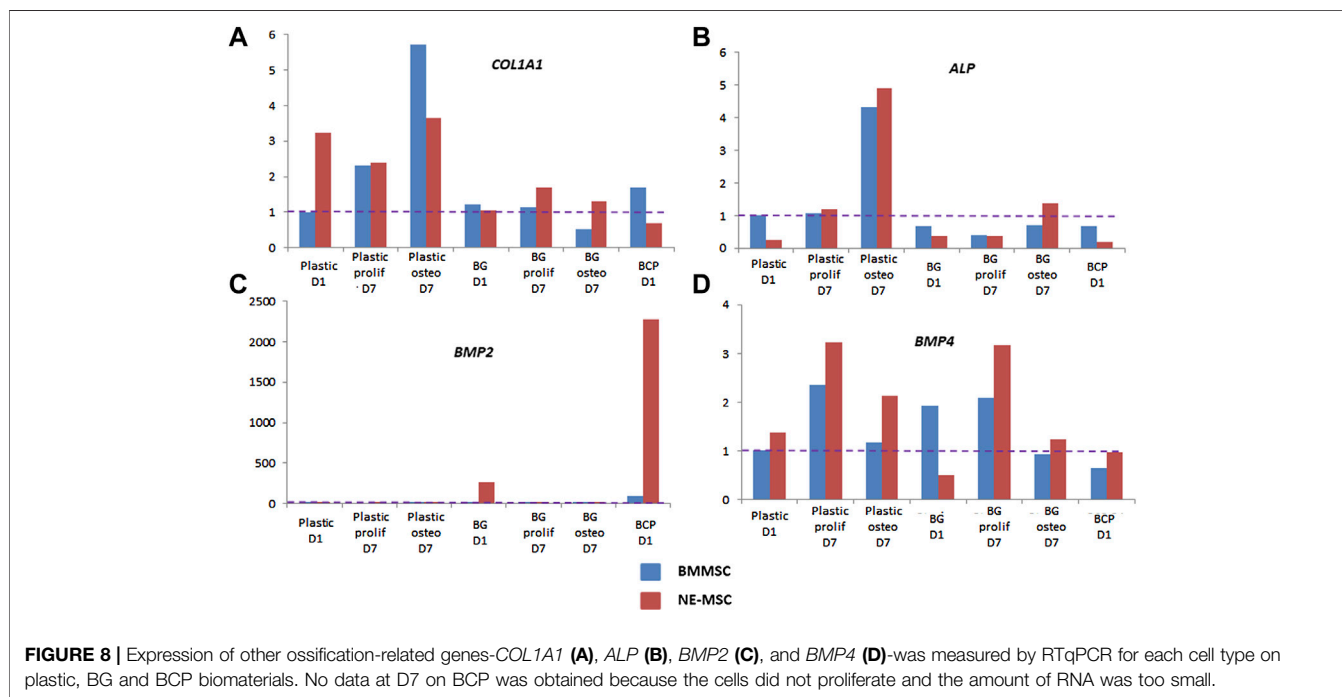
Although belonging to the same superfamily, BMMSCs and NE-MSCs exhibit striking differences, *in vitro* and *in vivo*. For future clinical applications, the association of BMMSCs with BCP biomaterial seems to be the most promising. Indeed, our *in vivo* experiments reveal that osteoinduction is only observed when BMMSCs transplanted on BCP. Recently, Rodrigues and colleagues reported that allogenic adipose-derived MSCs associated with BG 1) is biocompatible in the long term (3 months), 2) maintain their osteoinduction potential, and 3) is safe after subcutaneous implantation in immunocompetent *balb-c* mice. Indeed, a low spreading during cell adhesion was detected associated with an increase of HA depositions around the cells that look like differentiated osteoblasts (Rodrigues et al.,

2019). Any apparent local or systemic toxicity for organs or strong immunogenic reactions were noted, except a vascularized dense capsule around the graft (Rodrigues et al., 2019).

Certain *in vivo* conditions could significantly impact the engraftment and the bone formation. In our study, we chose to use nude mice to limit the immune response against the MSC allograft. The MSC allograft in Balb-c mice is possible, but the capsule formation surrounding the graft, probably due to the immune response in immunocompetent mice, could be a complication for implants (Velnar et al., 2016; Chung et al., 2017). The pH and the calcium concentration can also affect the cells. Here, we worked with 4 mM of calcium in culture medium. Maeno et al. (2005) showed that high concentration of calcium



**FIGURE 7 |** Comparative expression of ossification-related genes. Using RTqPCR, the expression of *RUNX2*, *BSP*, *COL1A1*, *OC*, *BMP2*, *BMP4*, *ALP*, and *OP* was measured for each cell type on plastic, BG and BCP biomaterials. On BG biomaterial, NE-MSCs overexpress the genes coding for *BSP*, *OC* and *OP* (A–C) and BMMSCs the gene coding for *RUNX2* (D).



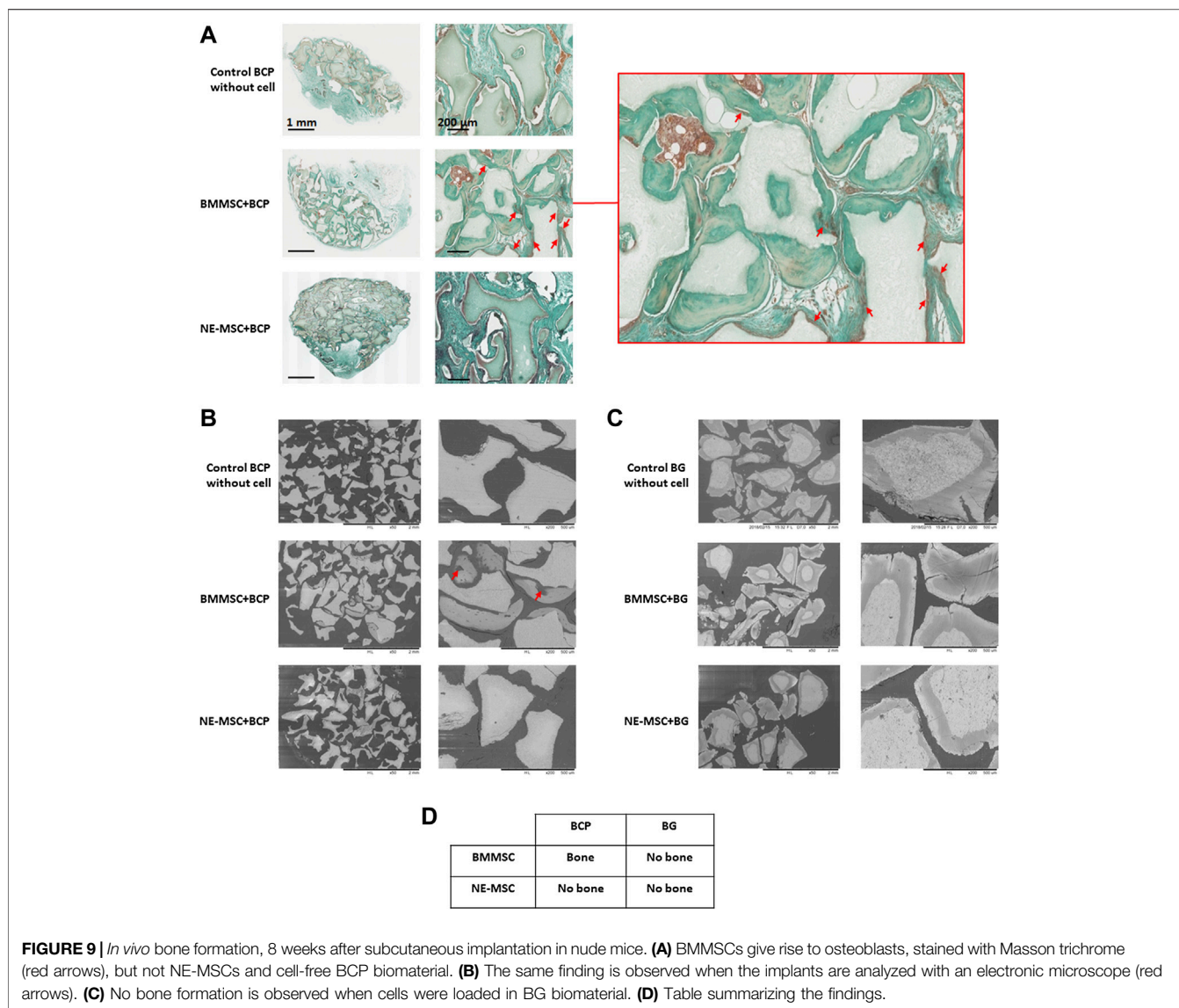
**FIGURE 8 |** Expression of other ossification-related genes-*COL1A1* (A), *ALP* (B), *BMP2* (C), and *BMP4* (D)-was measured by RTqPCR for each cell type on plastic, BG and BCP biomaterials. No data at D7 on BCP was obtained because the cells did not proliferate and the amount of RNA was too small.

above 10 mm are cytotoxic to osteoblasts, but those below 8 mm promote cell proliferation. We also used medium supplemented with 5% GMP-grade human PL for MSC culture. It is now well established that animal derived products such as FCS could significantly interact with phenotypical and functional characteristics of BMMSCs (Ben Azouna et al., 2012; Leotot

et al., 2013). Here, MSCs were grown with biomaterials 24 h before graft, and we implanted  $2 \times 10^6$  MSCs per site. In comparison, Rodrigues et al., (2019) used  $2 \times 10^4$  MSCs grown during 48 h on BG before implantation.

Several differences are also observed at the transcriptomic level: NE-MSCs express more abundantly three genes coding for





bone sialoprotein, osteocalcin and osteopontin while BMMSCs produced extra copies of *RUNX2*. This can probably explain the difference of mineralization of the extracellular matrix between BM- and NE-MSCs. It would be interesting to upregulate these genes in NE-MSCs or to down regulate these genes in BMMSCs to observe what will happen in terms of composition and mineralization of the 3D constructs. Hence, by identifying the modulating expression of genes implied in mineralization, it would be possible to optimize human MSC culture conditions or biomaterials with specific coating modulating factors. In these conditions, it will be interesting to perform again the same type of study. But these patterns of gene expression were not sufficient to explain the difference of osteoinduction *in vivo*. It would also be interesting to determine the gene expression pattern of adipose-MSCs and to compare with that obtained with BM- and NE-MSCs. This would also have repercussions on the comprehension of pathological mechanisms as well as in osteoporosis or other

degenerative bone disorders (Gambacurta et al., 2019; Jo et al., 2019) as well as bone tumors (Valenti et al., 2018).

Intriguingly, newborn nasal mesenchymal stem cells failed to differentiate into osteoblasts while adult nasal olfactory ectomesenchymal stem cells (OE-MSC) proved to be efficient for bone repair. They even outweigh bone marrow mesenchymal stem cells, when grafted in biphasic calcium phosphate ceramic discs (Delorme et al., 2009). In both studies, the elected biomaterial being identical, the reason for the discrepancy is likely associated to the main characteristics - age of the donor and location in the nose - of each stem cell subtype. Since newborn cells are usually more plastic than adult cells and display a higher differentiation potential (Chen et al., 2017), it was hypothesized that the former would perform at least as well as the latter. Our results indicate the opposite. Therefore, the location within the nasal cavity is probably the explanatory key. Nasal olfactory stem cells are now well characterized, and their differentiation

potential exhaustively assessed, especially for brain repair (Duan & Lu, 2015). In contrast, the stem cells collected from the anterior part of the newborn nose are newcomers in the field of ectomesenchymal stem cell subfamily and need to be fully depicted.

The discordant findings between *in vitro* and *in vivo* experiments with NE-MSCs are also enigmatic. The biomaterial could hardly be blamed since adult OE-MSCs differentiated into osteoblasts on BCP ceramic discs (Delorme et al., 2009). Obviously, a further characterization of NE-MSCs is required to find a convincing explanation. It should however be pointed out that the *in vivo* study is not as exhaustive as the *in vitro* study when bone-specific proteins and minerals are considered. In addition, as highlighted in a review article describing the osteogenic differentiation of human MSCs, the modifications observed *in vitro* are not always translated when the cells are grafted in an animal (Mollentze et al., 2021).

Initially, this project was designed in view to treat cleft palate. These malformations affect the face: there is a communication between the nose and the mouth interrupting the lip till the bone. Management requires three surgical procedures in the first 5 years of life (Worley et al., 2018; Stein et al., 2019): the closing of the lip in the first days, then the palate, up to 1 year, and finally the bone gap, up to 4 years, by means of a bone graft. We think that NE-MSCs could promote bone regeneration in view to avoid the third operation. Unfortunately, NE-MSCs and BG are not the best candidates for osteoinduction. It seems preferable to use BMMSCs associated with BCP for this indication.

## CONCLUSION

Bone repair induced by stem cells and biomaterials may represent an alternative to autologous bone grafting. Here, we compared the efficiency of two biomaterials—biphasic calcium phosphate (BCP) and bioactive glass (BG)—when loaded with either adult bone marrow mesenchymal stem cells (BMMSCs) or newborn nasal ecto-mesenchymal stem cells (NE-MSCs), the latter being collected for further repair of lip cleft-associated bone loss.

*In vitro*, BMMSCs and NE-MSCs adhere and survive both on BCP and BG, BMMSCs display a higher proliferation on BG

biomaterial. NE-MSCs produce a fragile mineralized extracellular matrix, with less collagen and alkaline phosphatase than BMMSCs. Variation in osteoblastic gene expression may explain such a discrepancy. *In vivo* experiments reveal that bone formation is only observed with BMMSCs transplanted on BCP biomaterial. The association of NE-MSCs with both biomaterials was not efficient and, pending further studies, is not yet recommended.

## DATA AVAILABILITY STATEMENT

The original contributions presented in the study are included in the article/supplementary material, further inquiries can be directed to the corresponding author.

## ETHICS STATEMENT

The studies involving human participants were reviewed and approved by the Ethical Committee (CPP, RCB: 2015-A00984-45). Written informed consent to participate in this study was provided by the participants' legal guardian/next of kin. The animal study was reviewed and approved by the local Ethical Committee on animal experiment (CEEA PDL no 6) on 23/09/2016 under the reference number Apafis 6575.

## AUTHOR CONTRIBUTIONS

LF and NS contribute equally to the manuscript. LF, BB, LG, and JV performed experiments and interpretation. ND and FS revised the manuscript. FF and PL equally supervised this work.

## FUNDING

We acknowledge the financial support of the European Commission through the H2020 project MAXIBONE #779322 "Personalized maxillofacial bone regeneration." This work was also supported by AORC Junior 2014-2015 grant (grant number NB/JM/1144-14, 2015, recipient LF).

## REFERENCES

- Arthur, A., and Gronthos, S. (2020). Clinical Application of Bone Marrow Mesenchymal Stem/Stromal Cells to Repair Skeletal Tissue. *Ijms* 21 (24), 9759. doi:10.3390/ijms21249759
- Azouna, N. B., Jenhani, F., Regaya, Z., Berraeis, L., Othman, T. B., Ducrocq, E., et al. (2012). Phenotypical and Functional Characteristics of Mesenchymal Stem Cells from Bone Marrow: Comparison of Culture Using Different Media Supplemented with Human Platelet Lysate or Fetal Bovine Serum. *Stem Cell Res. Ther.* 3 (1), 6. doi:10.1186/scrt97
- Bouler, J. M., Pilet, P., Gauthier, O., and Verron, E. (2017). Biphasic Calcium Phosphate Ceramics for Bone Reconstruction: A Review of Biological Response. *Acta Biomater.* 53, 1–12. doi:10.1016/j.actbio.2017.01.076

- Brennan, M. Á., Renaud, A., Amiaud, J., Rojewski, M. T., Schrezenmeier, H., Heymann, D., et al. (2014). Pre-clinical Studies of Bone Regeneration with Human Bone Marrow Stromal Cells and Biphasic Calcium Phosphate. *Stem Cell Res. Ther.* 5 (5), 114. doi:10.1186/scrt504
- Cannio, M., Bellucci, D., Roether, J. A., Boccaccini, D. N., and Cannillo, V. (2021). Bioactive Glass Applications: A Literature Review of Human Clinical Trials. *Materials* 14 (18), 5440. doi:10.3390/ma14185440
- Chen, Q., Zhou, H., and Hu, P. (2017). Stemness Distinctions between the Ectomesenchymal Stem Cells from Neonatal and Adult Mice. *Acta Histochem.* 119 (8), 822–830. doi:10.1016/j.acthis.2017.10.008
- Chung, L., Maestas, D. R., Jr, Housseau, F., and Elisseeff, J. H. (2017). Key Players in the Immune Response to Biomaterial Scaffolds for Regenerative Medicine. *Adv. Drug Deliv. Rev.* 114, 184–192. doi:10.1016/j.addr.2017.07.006

- Dahl, M., Jørgensen, N. R., Hørberg, M., and Pinholt, E. M. (2014). Carriers in Mesenchymal Stem Cell Osteoblast Mineralization-State-Of-The-Art. *J. Cranio-Maxillofacial Surg.* 42 (1), 41–47. doi:10.1016/j.jcms.2013.01.047
- Delorme, B., Ringe, J., Pontikoglou, C., Gaillard, J., Langonné, A., Sensebé, L., et al. (2009). Specific Lineage-Priming of Bone Marrow Mesenchymal Stem Cells Provides the Molecular Framework for Their Plasticity. *Stem Cells* 27 (5), 1142–1151. doi:10.1002/stem.34
- Delorme, B., Nivet, E., Gaillard, J., Häupl, T., Ringe, J., Devèze, A., et al. (2010). The Human Nose Harbors a Niche of Olfactory Ectomesenchymal Stem Cells Displaying Neurogenic and Osteogenic Properties. *Stem Cells Dev.* 19 (6), 853–866. doi:10.1089/scd.2009.0267
- Dominici, M., Le Blanc, K., Mueller, I., Slaper-Cortenbach, I., Marini, F. C., Krause, D. S., et al. (2006). Minimal Criteria for Defining Multipotent Mesenchymal Stromal Cells. The International Society for Cellular Therapy Position Statement. *Cytotherapy* 8 (4), 315–317. doi:10.1080/14653240600855905
- Donsante, S., Palmisano, B., Serafini, M., Robey, P. G., Corsi, A., and Riminucci, M. (2021). From Stem Cells to Bone-Forming Cells. *Ijms* 22 (8), 3989. doi:10.3390/ijms22083989
- Duan, D., and Lu, M. (2015). Olfactory Mucosa: a Rich Source of Cell Therapy for Central Nervous System Repair. *Rev. Neurosci.* 26 (3), 281–293. doi:10.1515/revneuro-2014-0065
- Ebrahimi, M., Botelho, M. G., and Dorozhkin, S. V. (2017). Biphasic Calcium Phosphates Bioceramics (HA/TCP): Concept, Physicochemical Properties and the Impact of Standardization of Study Protocols in Biomaterials Research. *Mater. Sci. Eng. C* 71, 1293–1312. doi:10.1016/j.msec.2016.11.039
- Féron, F., Perry, C., Girard, S. D., and Mackay-Sim, A. (2013). Isolation of Adult Stem Cells from the Human Olfactory Mucosa. *Methods Mol. Biol.* 1059, 107–114. doi:10.1007/978-1-62703-574-3\_10
- Gambacurta, A., Merlini, G., Ruggiero, C., Diedenhofen, G., Battista, N., Bari, M., et al. (2019). Human Osteogenic Differentiation in Space: Proteomic and Epigenetic Clues to Better Understand Osteoporosis. *Sci. Rep.* 9 (1), 8343. doi:10.1038/s41598-019-44593-6
- Gjerde, C., Mustafa, K., Hellem, S., Rojewski, M., Gjengedal, H., Yassin, M. A., et al. (2018). Cell Therapy Induced Regeneration of Severely Atrophied Mandibular Bone in a Clinical Trial. *Stem Cell. Res. Ther.* 9 (1), 213. doi:10.1186/s13287-018-0951-9
- Gonzalez-Vilchis, R. A., Piedra-Ramirez, A., Patiño-Morales, C. C., Sanchez-Gomez, C., and Beltran-Vargas, N. E. (2022). Sources, Characteristics, and Therapeutic Applications of Mesenchymal Cells in Tissue Engineering. *Tissue Eng. Regen. Med.* 19(2):325–361. doi:10.1007/s13770-021-00417-1
- Hosseinpour, S., Ghazizadeh Ahsaie, M., Rezaei Rad, M., Baghani, M. t., Motamedian, S. R., and Khojasteh, A. (2017). Application of Selected Scaffolds for Bone Tissue Engineering: a Systematic Review. *Oral Maxillofac. Surg.* 21 (2), 109–129. doi:10.1007/s10006-017-0608-3
- Hutchings, G., Moncrieff, L., Dompe, C., Janowicz, K., Sibiak, R., Bryja, A., et al. (2020). Bone Regeneration, Reconstruction and Use of Osteogenic Cells; from Basic Knowledge, Animal Models to Clinical Trials. *Jcm* 9 (1), 139. doi:10.3390/jcm9010139
- Jo, S., Han, J., Lee, Y. L., Yoon, S., Lee, J., Wang, S. E., et al. (2019). Regulation of Osteoblasts by Alkaline Phosphatase in Ankylosing Spondylitis. *Int. J. Rheum. Dis.* 22 (2), 252–261. doi:10.1111/1756-185X.13419
- Kargozar, S., Baino, F., Hamzehlou, S., Hill, R. G., and Mozafari, M. (2018). Bioactive Glasses: Sprouting Angiogenesis in Tissue Engineering. *Trends Biotechnol.* 36 (4), 430–444. doi:10.1016/j.tibtech.2017.12.003
- Khorasani, H. R., Sanchouli, M., Mehrani, J., and Sabour, D. (2021). Potential of Bone-Marrow-Derived Mesenchymal Stem Cells for Maxillofacial and Periodontal Regeneration: A Narrative Review. *Int. J. Dent.* 2021, 1–13. doi:10.1155/2021/4759492
- Leotot, J., Coquelin, L., Bodivit, G., Bierling, P., Hernigou, P., Rouard, H., et al. (2013). Platelet Lysate Coating on Scaffolds Directly and Indirectly Enhances Cell Migration, Improving Bone and Blood Vessel Formation. *Acta Biomater.* 9 (5), 6630–6640. doi:10.1016/j.actbio.2013.02.003
- Liang, W., Wu, X., Dong, Y., Shao, R., Chen, X., Zhou, P., et al. (2021). *In Vivo* behavior of Bioactive Glass-Based Composites in Animal Models for Bone Regeneration. *Biomater. Sci.* 9 (6), 1924–1944. doi:10.1039/d0bm01663b
- Luby, A. O., Ranganathan, K., Lynn, J. V., Nelson, N. S., Donneys, A., and Buchman, S. R. (2019). Stem Cells for Bone Regeneration. *J. Craniofacial Surg.* 30 (3), 730–735. doi:10.1097/SCS.00000000000005250
- Maeno, S., Niki, Y., Matsumoto, H., Morioka, H., Yatabe, T., Funayama, A., et al. (2005). The Effect of Calcium Ion Concentration on Osteoblast Viability, Proliferation and Differentiation in Monolayer and 3D Culture. *Biomaterials* 26 (23), 4847–4855. doi:10.1016/j.biomaterials.2005.01.006
- Mollentze, J., Durandt, C., and Pepper, M. S. (2021). An *In Vitro* and *In Vivo* Comparison of Osteogenic Differentiation of Human Mesenchymal Stromal/Stem Cells. *Stem Cells Int.* 2021, 1–23. doi:10.1155/2021/9919361
- Profeta, A., and Huppa, C. (2016). Bioactive-glass in Oral and Maxillofacial Surgery. *Craniofacial Trauma & Reconstr.* 9 (1), 001–014. doi:10.1055/s-0035-1551543
- Raghav, P. K., Mann, Z., Ahlawat, S., and Mohanty, S. (2022). Mesenchymal Stem Cell-Based Nanoparticles and Scaffolds in Regenerative Medicine. *Eur. J. Pharmacol.* 918, 174657. doi:10.1016/j.ejphar.2021.174657
- Rizwan, M., Hamdi, M., and Basirun\*, W. J. (2017). Bioglass 45S5-Based Composites for Bone Tissue Engineering and Functional Applications. *J. Biomed. Mat. Res.* 105 (11), 3197–3223. doi:10.1002/jbm.a.36156
- Rodrigues, C., Naasani, L. I. S., Zanatelli, C., Paim, T. C., Azevedo, J. G., de Lima, J. C., et al. (2019). Bioglass 45S5: Structural Characterization of Short Range Order and Analysis of Biocompatibility with Adipose-Derived Mesenchymal Stromal Cells *In Vitro* and *In Vivo*. *Mater. Sci. Eng. C* 103, 109781. doi:10.1016/j.msec.2019.109781
- Stein, M. J., Zhang, Z., Fell, M., Mercer, N., and Malic, C. (2019). Determining Postoperative Outcomes after Cleft Palate Repair: A Systematic Review and Meta-Analysis. *J. Plastic, Reconstr. Aesthetic Surg.* 72 (1), 85–91. doi:10.1016/j.bjps.2018.08.019
- Valenti, M. T., Dalle Carbonare, L., and Mottes, M. (2018). Role of microRNAs in Progenitor Cell Commitment and Osteogenic Differentiation in Health and Disease (Review). *Int. J. Mol. Med.* 41 (5), 2441–2449. doi:10.3892/ijmm.2018.3452
- Velnar, T., Bunc, G., Klobucar, R., and Gradisnik, L. (2016). Biomaterials and Host versus Graft Response: a Short Review. *Bosn J Basic Med Sci* 16 (2), 82–90. doi:10.17305/bjbm.2016.525
- Veron, A. D., Bienboire-Frosini, C., Feron, F., Codecasa, E., Deveze, A., Royer, D., et al. (2018). Isolation and Characterization of Olfactory Ecto-Mesenchymal Stem Cells from Eight Mammalian Genera. *BMC Vet. Res.* 14 (1), 17. doi:10.1186/s12917-018-1342-2
- Worley, M. L., Patel, K. G., and Kilpatrick, L. A. (2018). Cleft Lip and Palate. *Clin. Perinatology* 45 (4), 661–678. doi:10.1016/j.clp.2018.07.006

**Conflict of Interest:** The authors declare that the research was conducted in the absence of any commercial or financial relationships that could be construed as a potential conflict of interest.

**Publisher's Note:** All claims expressed in this article are solely those of the authors and do not necessarily represent those of their affiliated organizations, or those of the publisher, the editors and the reviewers. Any product that may be evaluated in this article, or claim that may be made by its manufacturer, is not guaranteed or endorsed by the publisher.

Copyright © 2022 Fievet, Serratrice, Brulin, Giraudo, Véran, Degardin, Sabatier, Féron and Layrolle. This is an open-access article distributed under the terms of the Creative Commons Attribution License (CC BY). The use, distribution or reproduction in other forums is permitted, provided the original author(s) and the copyright owner(s) are credited and that the original publication in this journal is cited, in accordance with accepted academic practice. No use, distribution or reproduction is permitted which does not comply with these terms.