



HAL
open science

Comparative Metagenomics Highlight a Widespread Pathway Involved in Catabolism of Phosphonates in Marine and Terrestrial Serpentinizing Ecosystems

Eléonore Frouin, Aurélien Lecoivre, Fabrice Armougom, Matthew Schrenk,
Gaël Erauso

► **To cite this version:**

Eléonore Frouin, Aurélien Lecoivre, Fabrice Armougom, Matthew Schrenk, Gaël Erauso. Comparative Metagenomics Highlight a Widespread Pathway Involved in Catabolism of Phosphonates in Marine and Terrestrial Serpentinizing Ecosystems. *mSystems*, 2022, 7 (4), 10.1128/msystems.00328-22. hal-03993290

HAL Id: hal-03993290

<https://amu.hal.science/hal-03993290>

Submitted on 17 Feb 2023

HAL is a multi-disciplinary open access archive for the deposit and dissemination of scientific research documents, whether they are published or not. The documents may come from teaching and research institutions in France or abroad, or from public or private research centers.

L'archive ouverte pluridisciplinaire **HAL**, est destinée au dépôt et à la diffusion de documents scientifiques de niveau recherche, publiés ou non, émanant des établissements d'enseignement et de recherche français ou étrangers, des laboratoires publics ou privés.



Distributed under a Creative Commons Attribution 4.0 International License



Comparative Metagenomics Highlight a Widespread Pathway Involved in Catabolism of Phosphonates in Marine and Terrestrial Serpentinizing Ecosystems

Eléonore Frouin,^a  Aurélien Lecoivre,^a Fabrice Armougom,^a  Matthew O. Schrenk,^b  Gaël Erauso^a

^aAix-Marseille Université, Université de Toulon, CNRS, IRD, MIO UM 110, Marseille, France

^bDepartment of Microbiology and Molecular Genetics, Michigan State University, East Lansing, Michigan, USA

Eléonore Frouin and Aurélien Lecoivre contributed equally to this work. Author order was determined by anteriority in this study.

ABSTRACT Serpentinizing hydrothermal systems result from water circulating into the subsurface and interacting with mantle-derived rocks notably near mid-ocean ridges or continental ophiolites. Serpentinization and associated reactions produce alkaline fluids enriched in molecular hydrogen, methane, and small organic molecules that are assumed to feed microbial inhabitants. In this study, we explored the relationships linking serpentinization to associated microbial communities by comparative metagenomics of serpentinite-hosted systems, basalt-hosted vents, and hot springs. The shallow Prony bay hydrothermal field (PBHF) microbiome appeared to be more related to those of ophiolitic sites than to the Lost City hydrothermal field (LCHF) microbiome, probably because of the meteoric origin of its fluid, like terrestrial alkaline springs. This study emphasized the ubiquitous importance of a set of genes involved in the catabolism of phosphonates and highly enriched in all serpentinizing sites compared to other ecosystems. Because most of the serpentinizing systems are depleted in inorganic phosphate, the abundance of genes involved in the carbon-phosphorus lyase pathway suggests that the phosphonates constitute a source of phosphorus in these ecosystems. Additionally, hydrocarbons such as methane, released upon phosphonate catabolism, may contribute to the overall budget of organic molecules in serpentinizing systems.

IMPORTANCE This first comparative metagenomic study of serpentinite-hosted environments provides an objective framework to understand the functioning of these peculiar ecosystems. We showed a taxonomic similarity between the PBHF and other terrestrial serpentinite-hosted ecosystems. At the same time, the LCHF microbial community was closer to deep basalt-hosted hydrothermal fields than continental ophiolites, despite the influence of serpentinization. This study revealed shared functional capabilities among serpentinite-hosted ecosystems in response to environmental stress, the metabolism of abundant dihydrogen, and the metabolism of phosphorus. Our results are consistent with the generalized view of serpentinite environments but provide deeper insight into the array of factors that may control microbial activities in these ecosystems. Moreover, we show that metabolism of phosphonate is widespread among alkaline serpentinizing systems and could play a crucial role in phosphorus and methane biogeochemical cycles. This study opens a new line of investigation of the metabolism of reduced phosphorus compounds in serpentinizing environments.

KEYWORDS serpentinization, phosphonate catabolism, comparative metagenomics, hydrothermal systems

Serpentinite-hosted hydrothermal systems are the product of the hydration of ultramafic rocks (i.e., peridotite) originating in Earth's mantle. The serpentinization process produces serpentine minerals and emits hyperalkaline fluids enriched in hydrogen gas, methane, and

Editor Jack A. Gilbert, University of California San Diego

Copyright © 2022 Frouin et al. This is an open-access article distributed under the terms of the [Creative Commons Attribution 4.0 International license](https://creativecommons.org/licenses/by/4.0/).

Address correspondence to Gaël Erauso, gael.erauso@mio.osupytheas.fr, or Fabrice Armougom, fabrice.armougom@mio.osupytheas.fr.

The authors declare no conflict of interest.

Received 13 April 2022

Accepted 15 June 2022

Published 1 August 2022

small organic molecules (e.g., formate, acetate, and methanol) (1, 2). These products of the serpentinization and associated reactions are assumed to feed the microbial inhabitants of these ecosystems (3). In submarine environments, discharges of highly reduced alkaline fluids precipitate upon mixing with surrounding seawater, forming large edifices of brucite and carbonate (4). The mixing of hydrothermal fluids with seawater also sustains ionic and redox gradients within the porous chimney walls. Similar gradients are thought to have played a role in the development of metabolic processes during the early evolution of life on Earth (5) and perhaps other planets (2). The emblematic Lost City hydrothermal field (LCHF), located at ~800 m below sea level (mbsl), 15 km off the Mid-Atlantic Ridge, has been the only submarine system of this type studied for many years and still represents a reference model for serpentinization-influenced geochemical processes and associated microbial ecosystems (6, 7). However, the sampling of deep-sea serpentinizing systems is technically challenging, and therefore, other, more accessible serpentinizing environments have been investigated, such as continental ophiolites, portions of ancient seafloor obducted onto continental margins (3). The Prony Bay hydrothermal field (PBHF), recently rediscovered at a shallow depth (<50 mbsl, bay of Prony, New Caledonia [8]), represents an alternate example of a marine serpentinizing ecosystem. There, like at LCHF, tall brucite-carbonate chimneys vent hyperalkaline fluids enriched in H₂ and CH₄, at lower temperatures (maximum, 42°C) than reported at LCHF (up to 90°C) (9). Because of their distinctive geologic settings (mid-ocean ridge versus suprasubduction zone for LCHF and PBHF, respectively), the two hydrothermal systems differ in their circulating fluids. Indeed, PBHF is alimented by meteoric waters (instead of seawater as at LCHF) percolating through the thick peridotite nappes (>1.5 km) and discharges low-salinity fluids into the lagoon (10). Thus, from a hydrogeological point of view, PBHF appears to be an intermediate between marine and terrestrial serpentinizing systems (10). This peculiar situation was also confirmed at a microbial community level, since PBHF shared several phylotypes with both continental and submarine serpentinizing ecosystems, such as members of the genus *Hydrogenophaga*—“*Serpentinomonas*,” typical of terrestrial systems, or two distinct phylotypes of uncultivated *Methanosarcinales* (9–11), first discovered at LCHF (7) and The Cedars (12). Besides these few phylotypes, microbial communities inhabiting the serpentinizing ecosystems showed limited similarity (13, 14). This observation suggests that unknown environmental factors influence the taxonomic distribution beyond the physicochemical conditions imposed by serpentinization. In natural ecosystems, many different species possess similar metabolic capabilities and can potentially play the same ecological roles depending on the biogeography (15). Therefore, differences in the microbiome compositions of serpentinizing systems from distinct geographic sites do not necessarily reflect different functional patterns. Harsh conditions imposed by serpentinization (i.e., high pH and low concentrations of terminal electron acceptors and dissolved inorganic carbon [DIC]) presumably exert a strong selective pressure on the associated microbial communities. Our working hypothesis was that to thrive under such challenging conditions, microorganisms of these ecosystems have evolved convergent adaptive strategies that should be observable at the functional level across distant serpentinization sites, beyond apparent differences at the taxonomic level.

Despite the lack of metabolic profile comparisons of alkaline serpentinite-hosted ecosystems so far, a thermodynamic modeling study (16) suggested that peridotite-hosted hydrothermal fields, including LCHF, showed similar catabolic energy profiles available for key microbial metabolisms, while these profiles were distinct from those of basalt-hosted hydrothermal fields. Furthermore, microbiological studies of serpentinizing ecosystems have mainly focused their attention on the most apparent metabolisms associated with the two dominant sources of energy, H₂ and CH₄, in submarine systems such as LCHF (17) and PBHF (18) and in continental sites such as the Coast Range Ophiolite Microbial Observatory (CROMO; USA) (19), Voltri Massif (Italy) (20), or Santa Elena ophiolite (Costa Rica) (21). However, recent studies have pointed to the potential implication of organic molecules produced by serpentinization and associated reactions, such as formate (22–24) and aromatic amino acids (25), as primary sources of carbon, together with CH₄, given the nearly complete depletion of DIC in end member fluids. In contrast, metabolic strategies for nitrogen or sulfur utilization remain

TABLE 1 Global distribution of studied samples

Site, country	Type	Sample ID ^a	Depth (m)	pH	Temp (°C)
Coast Range Ophiolite, USA	Groundwater from well	QV1.1	−23	11.5	18
		CSW1.3	−23	10.1	17
		CSW1.1	−19	12.2	17
		QV1.2	−15	7.9	18
Santa Elena Ophiolite, Costa Rica	Spring water	SE.9		11.54	26
	Voltri Massif, Italy	Spring water	GOR.13		12.3
GOR.12			11.8	24	
BR2.12			12.1	22	
BR2.13			12.3	22	
Cabeço de Vide, Portugal	Groundwater from a borehole	CVA	−130	11.4	20
Bay of Prony, New Caledonia	Hydrothermal chimney	PBHF.27	−43	10.6	<40
		PBHF.28	−43	10.6	<40
Lost City, Atlantic Ocean	Hydrothermal chimney	LCHF.75	−733	10.2	40–90
		LCHF.81	−767	10.2–10.7	40–90
Axial Seamount, Pacific Ocean	Hydrothermal fluid	Mrk.33	−1,516	5.4	28
		Mrk.113	−1,522	6.2	24
Mid-Cayman Rise, Caribbean Sea	Hydrothermal fluid	MCR.SG	−4,940	6.7	108
Tattapani, Chhattisgarh, India	Water from hot spring	TAT.3		7	69
		TAT.4		7.8	67
Octopus Spring, USA	Water from hot spring	Yell.O		8	84
Conch Spring, USA		Yell.C		8	84

^aID, identifier.

largely understudied in serpentinization-influenced ecosystems (26). Moreover, microbial utilization of P in alkaline serpentinizing systems has not been, to our knowledge, previously addressed, despite P being an essential nutrient for life. The only observation made so far was from prokaryotic lipid biomarkers enriched in the glycosyl head group instead of the phosphorus-containing head group at LCHF, possibly because of low availability of P as a nutrient (27). The most readily assimilated form of P in marine ecosystems is inorganic phosphate (28). However, under phosphate-limited conditions, a wide range of microorganisms can metabolize reduced P compounds as substrates for growth, including phosphonates, which are characterized by a chemically stable carbon-phosphorus (C-P) bond, or phosphite (PO₃^{3−}) (29).

In this study, we performed a cross-comparison of metagenomes from submarine and terrestrial serpentinizing systems, along with a selection of metagenomes from other hydrothermal environments, *a priori* not influenced by serpentinization (for example, deep-sea basalt-hosted vents and terrestrial hot springs). We aimed to identify core microbial communities, and common functions or metabolic pathways, which could be characteristic of serpentinizing systems and contribute to understanding of microbial physiology adaptations to these challenging environments.

RESULTS

Data set and site location. The data set consisted of 21 publicly available environmental metagenomes encompassing marine and continental serpentinite-hosted systems, hot springs, and basalt-hosted hydrothermal vents spread worldwide (see Table S1 and Fig. S1 at <https://doi.org/10.5281/zenodo.6597409>). They originated from 10 well-studied sites comprising PBHF, LCHF, CROMO, Santa Elena ophiolite, Voltri Massif, Cabeço de Vide aquifer (CVA), Tattapani and Yellowstone hot springs, Axial Seamount (Juan de Fuca Ridge), and the Piccard hydrothermal field (mid-Cayman rise). For each metagenome, the type of habitat, the depth, the temperature, and the pH are reported in Table 1. All selected serpentinizing systems emit highly alkaline fluids, with pHs ranging between 9 and 12.3, except for sample QV1.2 in CROMO (pH 7.9). Fluids from other ecosystems had relatively circumneutral pH values.

De novo assembly of each metagenome generated between 10,084 and 401,248 contigs, depending on the sample (see Table S2 at <https://doi.org/10.5281/zenodo.6597409>). This wide variability of contigs resulted from variations in sequencing depth variability

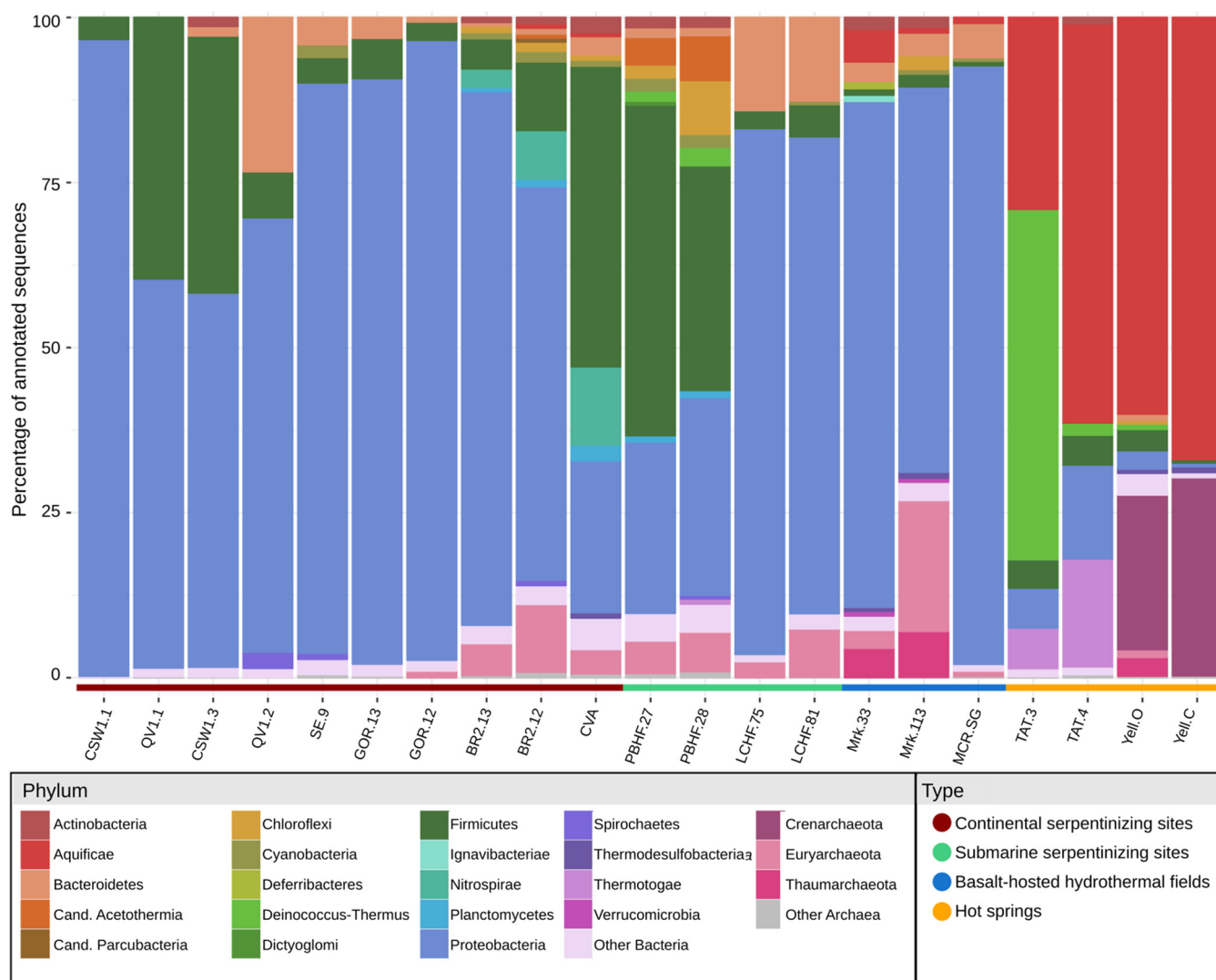


FIG 1 Relative abundances of microbial phyla in the 21 metagenomes compared in this study. The taxonomic distribution was determined using genes successfully assigned to known prokaryotic taxa with MEGAN6 using the lowest-common-ancestor algorithm.

between metagenomes. Consequently, the number of predicted genes ranged from 16,780 to 579,028. Their rate of annotation to known functional categories reached, on average, 55% and 38% based on the Cluster of Orthologous Groups (COG) and KEGG databases, respectively.

Microbial community composition. The overall microbial taxonomic diversity identified in the set of metagenomes was mostly affiliated with 22 phyla (19 bacterial and 3 archaeal phyla [Fig. 1]) based on the taxonomic annotation of all genes. The *Proteobacteria* (up to 96%) and *Firmicutes* (up to 50%) phyla made up the bulk of the microbial composition in most samples. Compared with the other environments, the hot springs showed a distinct taxonomic profile, with a large proportion of thermophilic or hyperthermophilic lineages which is typical of such ecosystems (30). Aside from the hot spring samples, the archaeal communities were dominated by the Euryarchaeota phylum, which represented up to 20% in hydrothermal fields (LCHF, PBHF, and basalt-hosted hydrothermal systems) and continental serpentinizing systems (Voltri Massif and CVA). While being considered marine in this study, the two metagenomes of PBHF harbored taxonomic profiles distinct from those of LCHF or other deep-sea hydrothermal systems. The relatively balanced distribution of the dominant *Firmicutes* and *Proteobacteria* at PBHF was more like that of terrestrial serpentinizing systems (e.g., CVA). However, the abundance of the candidate phylum *Acetothermia* in

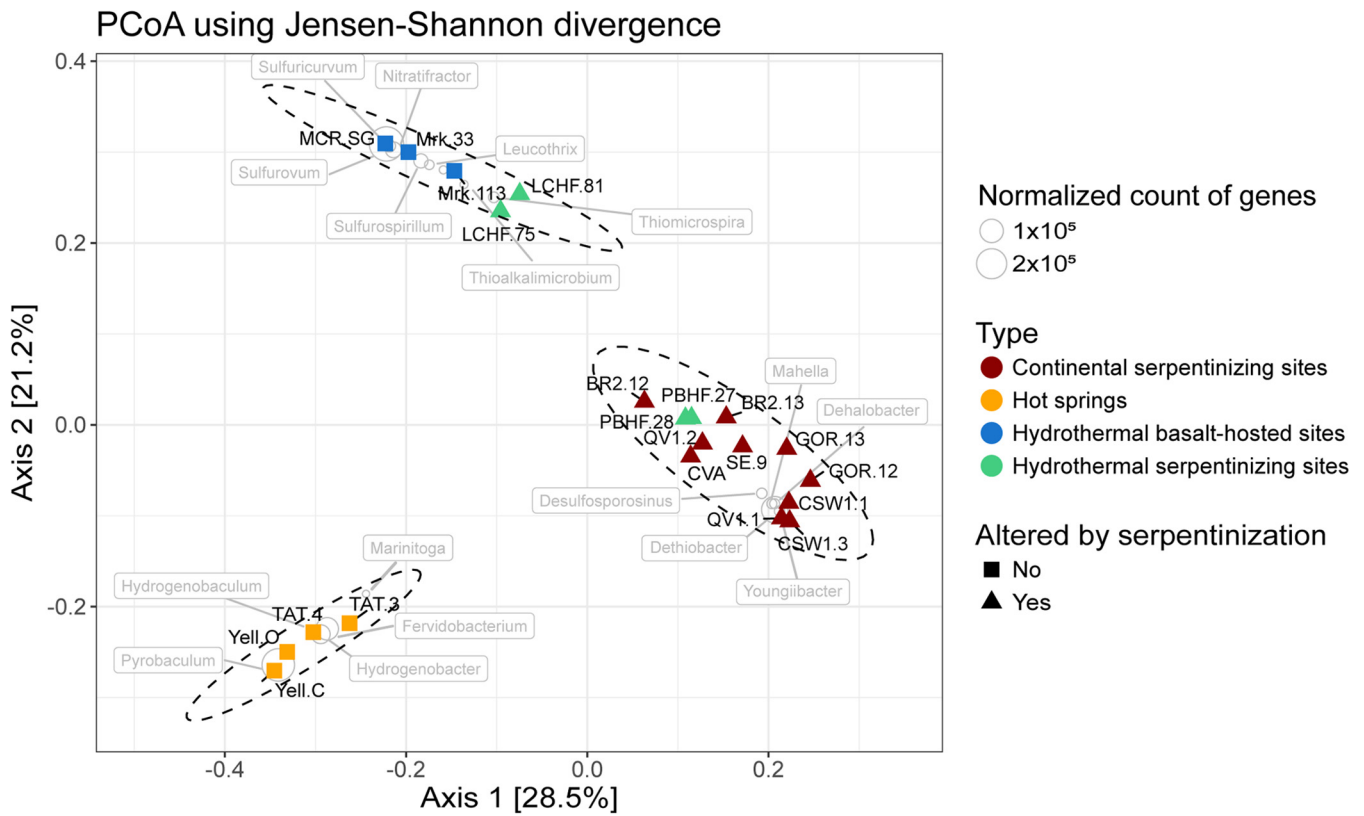


FIG 2 Microbial community composition at the genus level for the 21 metagenomes. Each metagenome is symbolized by a triangle or a square depending on the presence of serpentinization reactions and is colored by ecosystem category. In each of the 3 clusters, the overabundant genera (with statistically significant differences) are indicated by circles and labeled. The size of circles is proportional to the number of genes assigned to the respective genus.

PBHF constituted a singularity, as the organisms were scarce in other serpentinizing environments compared in this study.

The relationships between metagenomes were further investigated at the taxonomic level of genus, and this analysis revealed a clustering of metagenomes according to the environmental context of the microbiome habitat (Fig. 2). A first cluster gathered the four hot springs, sharing mainly hyperthermophilic genera (e.g., *Hydrogenobacter* and *Pyrobaculum*) typically associated with dihydrogen or iron metabolisms (31, 32). The second cluster included five samples from deep-sea hydrothermal fields, encompassing both basalt and peridotite host rock. Abundant genera found within this cluster included *Gammaproteobacteria* or *Epsilonproteobacteria* mostly associated with sulfur cycling (e.g., *Thiomicrospira* and *Sulfurospirillum* or *Sulfurovum*, respectively) in hydrothermal environments (16). The last cluster contained all the serpentinizing systems fed by fresh water, i.e., continental serpentinizing systems and the coastal PBHF. In this group, the highest abundances were found for members of the *Clostridiales* (e.g., *Youngiibacter* and *Dehalobacter*) and *Betaproteobacteria* (e.g., *Hydrogenophaga*). This analysis thereby set the LCHF metagenomes apart from the ones from all other other serpentinizing systems (Fig. 2).

Metabolic potential. The metabolic potential of microbial communities was investigated by searching the metagenomes for genes encoding key enzymes of metabolic pathways involved in utilization of the main products of serpentinization (dihydrogen and methane) or alternative sources of energy (sulfur or nitrogen compounds) or carbon (Fig. 3).

To investigate H₂ metabolism, genes encoding [NiFe]- and [FeFe]-hydrogenases were searched in the metagenomes. The bidirectional [NiFe]-hydrogenase-encoding genes of group 3d (33, 34) were more prevalent in all serpentinizing ecosystems (*hoxY* [Fig. 3]) than for other metagenomes. However, this peculiar distribution of gene

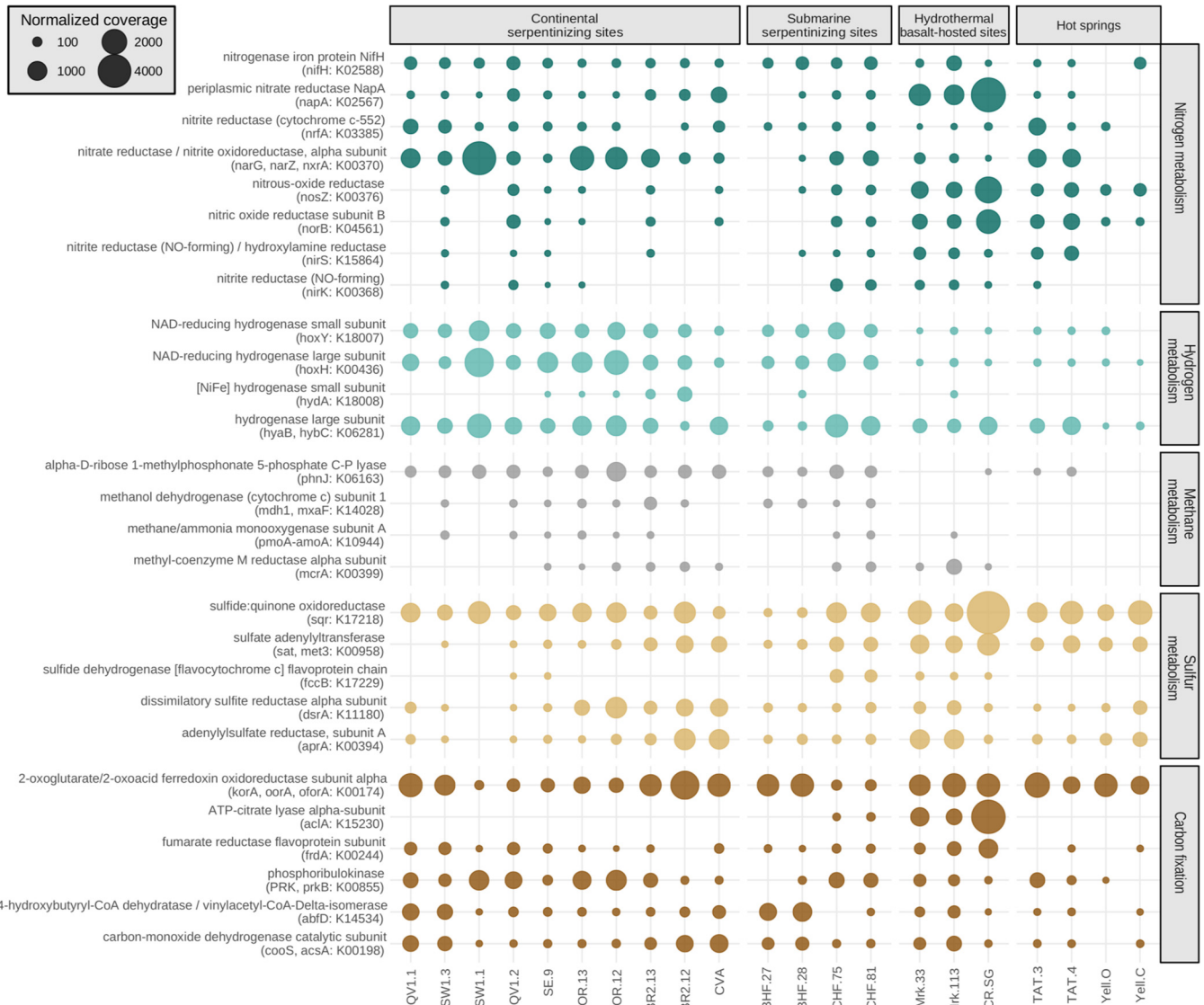


FIG 3 Potential microbial metabolisms in the 21 metagenomes from hydrothermal systems. Shown is a bubble plot of key genes involved in nitrogen (green), dihydrogen (turquoise), methane (gray), and sulfur (beige) potential metabolisms and carbon fixation (brown). The size of the circles corresponds to the abundance of normalized KOs.

abundance was not observed for other genes associated with H₂ metabolism, even those that showed significant differences across sites.

Methanogenesis or anaerobic methane oxidation (AOM) tracked by using the *mcrA* gene (encoding the alpha subunit of the methyl coenzyme M reductase) (35, 36) was detected in half of the serpentinizing sites (not detected at CROMO and PBHF) and in deep-sea vents. Since the presence of *mcrA* in PBHF, which is correlated with the 16S rRNA-encoding gene of *Methanosarcinales*, was consistently reported in previous PCR-based surveys (9, 11), its absence in PBHF metagenomes could be a consequence of their moderate sequencing depth. In contrast, genes involved in aerobic particulate methane oxidation (*pmoA*) or methanol oxidation (*mxoF* or *mdh1*) (37) were detected almost exclusively in serpentinizing systems, which are methane-rich environments.

Both the *nirK* and *norB* genes, selected as genetic markers of denitrification in this study, were detected in only 4 of the 10 continental serpentinizing sites, while they were present in deep-sea vents (including LCHF), and only *norB* was widespread in hot springs. However, key genes of dissimilatory nitrate reduction (representing the first step of denitrification), *napA* and the orthologous *narG*, *narZ*, and *nxrA* genes, were found in all hydrothermal sites.

Although *narG* (and its orthologous genes) was overabundant compared to *napA* in serpentinizing environments (especially in terrestrial sites), the inverse relationship was observed for the deep-sea vents. The *nrfA* gene, a marker of nitrite reduction to ammonium, and the *nifH* gene, a marker for nitrogen fixation, were equally distributed at low abundance in all sites. Finally, genes involved in the anaerobic ammonium oxidation pathway (Anammox), including *hzsA* (encoding the hydrazine synthase) and *hdh* (encoding the hydrazine dehydrogenase), were not detected among the 21 metagenomes.

Regarding sulfur metabolisms, genes associated with the dissimilatory sulfate reduction, such as *dsrA* (dissimilarity sulfite reductase), *aprA* (adenylylsulfate reductase), and *sat* (sulfate adenylyltransferase), were detected in most of the metagenomes, but with a relatively low abundance at CROMO. In addition, the high abundance of the *sqr* gene (encoding a sulfide:quinone oxidoreductase) suggested that sulfide oxidation is a major metabolism, especially in basalt-hosted hydrothermal vents. Another sulfide-oxidizing metabolism, involving the flavocytochrome *c* sulfide dehydrogenase-encoding gene, was mostly restricted to deep-sea hydrothermal systems, including LCHF.

Most of the key genes of known prokaryotic autotrophic carbon fixation pathways (reviewed by Berg et al. [38]) were recovered in the metagenomes (Fig. 3), except for the *acI*A gene, encoding ATP citrate lyase, one of the key enzymes of the reductive tricarboxylic (rTCA) cycle, which was found only in LCHF and basalt-hosted metagenomes. Other marker genes of autotrophic carbon fixation pathways were differentially represented in the metagenomes of LCHF and PBHF. For example, genetic markers for the 3-hydroxypropionate bicycle (*frdA*) and Calvin-Benson-Bassham cycle (*prkB*) were more abundant at LCHF, while at PBHF, the dominant markers were those of the reductive acetyl coenzyme A (acetyl-CoA) (Wood-Ljungdahl) pathways (*cooS* and *acsA*) (Fig. 3).

Comparison of functional profiles. Except for *hoxY*, the abundance of targeted metabolic genes did not significantly differ between serpentinizing and other environments. Additionally, the hierarchical clustering of all genes annotated with KEGG Orthology (KO) did not regroup the serpentinizing sites (Fig. S3 at <https://doi.org/10.5281/zenodo.6597409>) but pointed out functional similarities between LCHF and the basalt-hosted hydrothermal vents. Indeed, their metagenomes were enriched for genes encoding transporters (e.g., for sugar, phosphate, and Mg^{2+}) and ion channels as well as for genes often associated with coping strategies under fluctuating environmental conditions, including the *comFC* genes, related to bacterial competence (39), or the *dppA* gene, linked to chemotaxis (40). Likewise, two genes encoding alginate biosynthesis and transport (*alg8* and *eexD*, respectively) were recovered exclusively in metagenomes from deep-sea hydrothermal fields and could contribute to the formation of biofilms (41).

Since the hierarchical clustering of functional profiles did not group serpentinizing sites, a supervised approach was afterwards applied to specifically select annotated genes with a differential abundance between serpentinizing and other hydrothermal systems. It was assumed that the overabundant genes in serpentinizing systems endow beneficial functions to their microbial communities. The random forest method proved efficient in selecting a set of genes whose profile segregated the serpentinizing sites from other hydrothermal environments (Fig. 4). The genes specifically enriched in serpentinizing ecosystems belonged to various functional categories, including cellular responses to exposure to stressful conditions (heat shock response [*hcrA* and *rpoE*]) as well as DNA repair (*recO*) and defense mechanisms (*fitB*, *ndoAI*, and *cas7*). Genes encoding membrane transporters of antibacterial compounds microcin C (*yejA*) and the ABC-type Fe^{3+} -siderophore transport system (ABC.FEV.A) were also overabundant in serpentinizing metagenomes. This is also the case for the gene (*mnhD*) encoding part of a putative multisubunit Na^+/H^+ antiporter (Mnh complex), involved in homeostasis of the cytosolic pH, and membrane energization (42), which is expected to be important for life in hyperalkaline environments. As mentioned above, the metagenomes from serpentinizing systems were enriched in *hoxH* and *hoxY*, which encode the large and small subunits of an [NiFe]-hydrogenase of group 3d. However, one of the most striking features was the

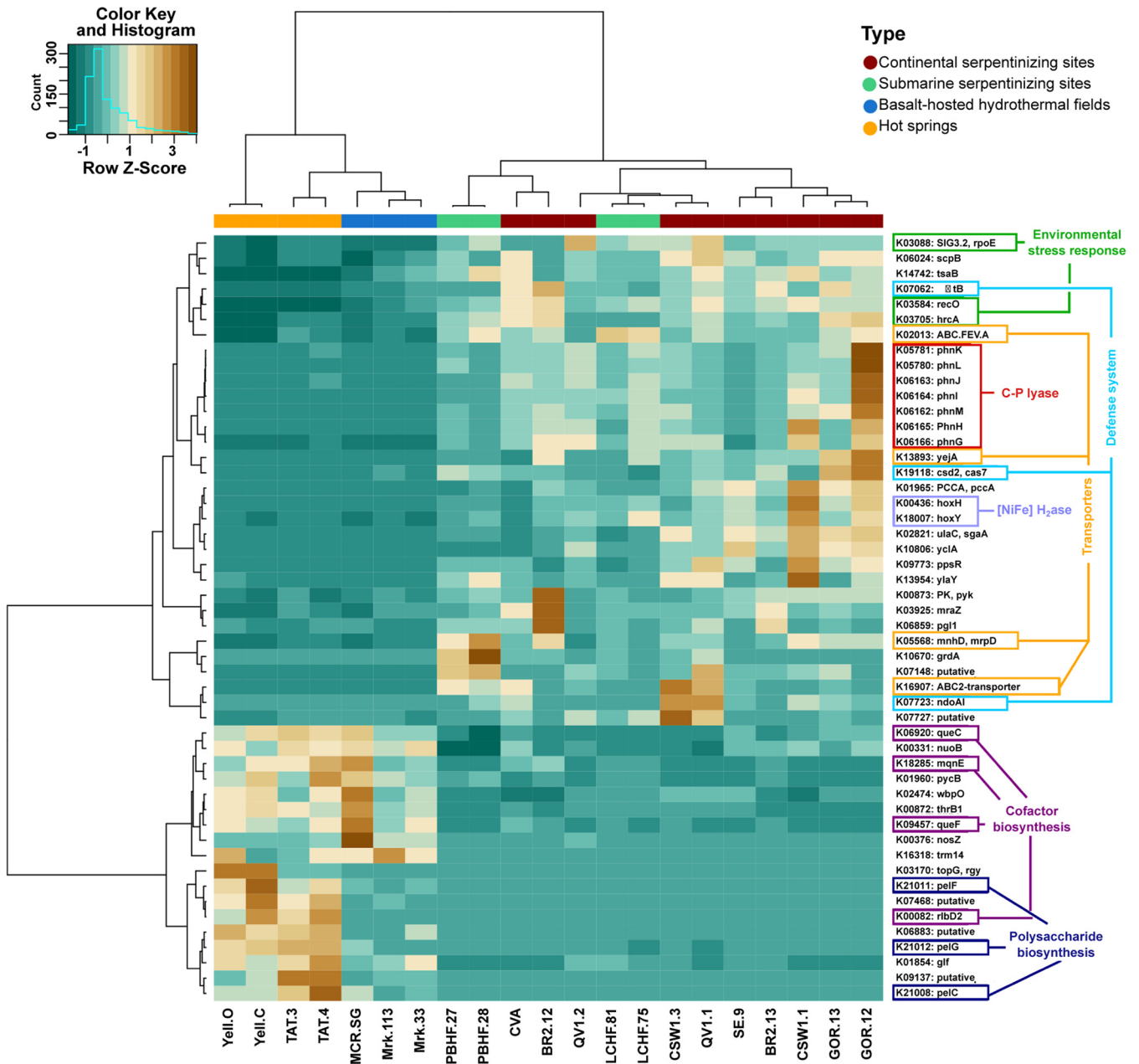


FIG 4 Heat map showing the normalized abundance of the top 50 KEGG Orthology annotations that best discriminate the 21 functional profiles into two categories of ecosystems. The brown tint indicates a higher relative abundance.

overrepresentation of seven genes from the *phn* operon, encoding enzymes for phosphonate catabolism. The same overrepresentation of *phn* genes was obtained using a COG-based annotation in the random forest clustering (Fig. S4 at <https://doi.org/10.5281/zenodo.6597409>).

The carbon-phosphorus lyase operon. The seven identified genes (i.e., *phnGHIJKLM*) belong to the operon coding for the C-P lyase and, therefore, are involved in the breakdown of various phosphonates (43). These genes constitute the minimal catalytic core unit, essential for C-P bond cleavage (44). Remarkably, the seven genes (*phnGHIJKLM*) of the C-P lyase were almost exclusively present in serpentinite-hosted ecosystems (Fig. 5 and Table S3 at <https://doi.org/10.5281/zenodo.6597409>). The even abundance of *phn* genes within each metagenome most likely reflected their organization in an operon. In the serpentinizing sites studied, we estimated that 5% to 52% of microbial genomes (according to the normalization against the abundances of 10 single-copy housekeeping genes) could

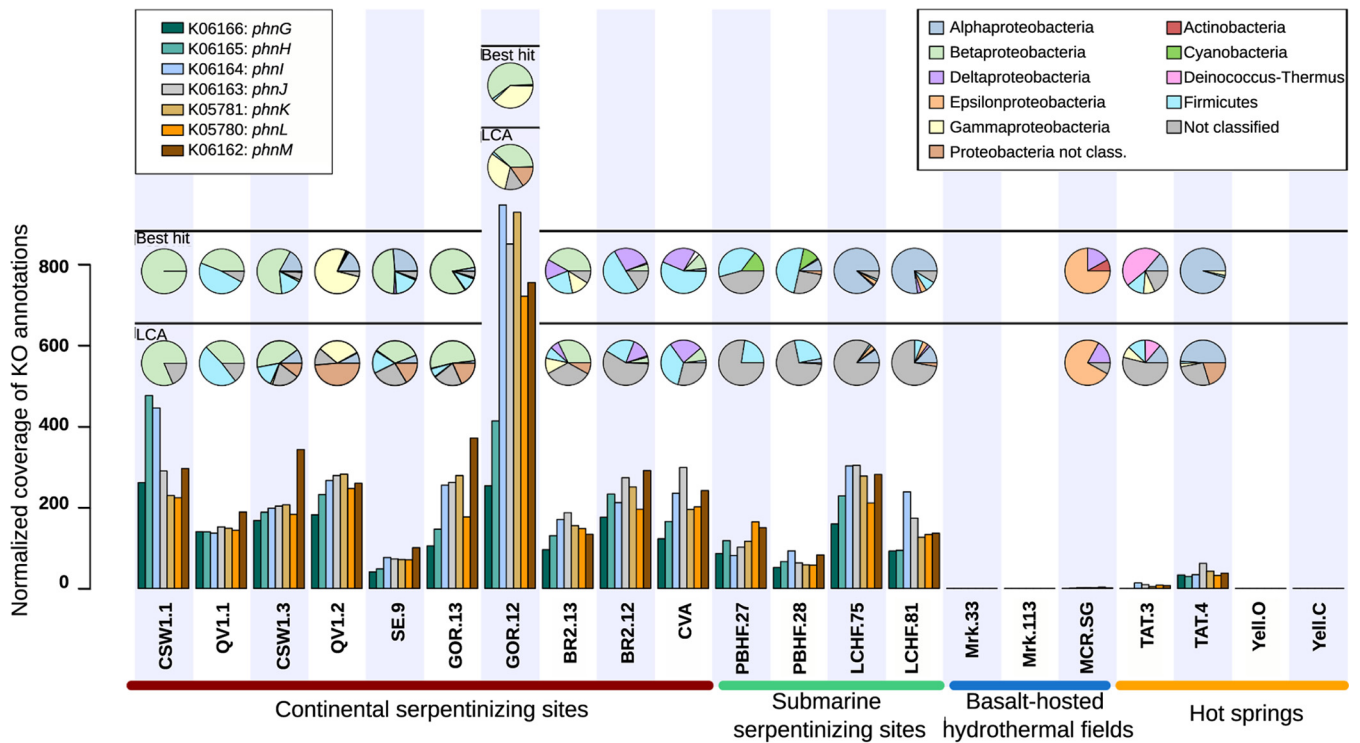


FIG 5 Abundances of genes encoding the catalytic component of C-P lyase in the 21 metagenomes investigated in the present study. The bar plot corresponds to the normalized distribution of each KO annotation associated with *phnGHIJKLM* genes. Pie charts indicate their taxonomic distribution per metagenome among phyla and proteobacterial classes.

contain the C-P lyase essential genes, a rate comparable to the 30% detected in the metagenomes of the Sargasso Sea, where phosphonate degradation is a prominent process (45) (see Table S4 at <https://doi.org/10.5281/zenodo.6597409>). Taxonomic annotation of the *phn* genes identified in the metagenomes distributed them in several microbial phyla (Fig. 5). They were predominantly affiliated with *Alphaproteobacteria* and *Firmicutes* at LCHF and PBHF, respectively. In the continental serpentinizing ecosystems, most of *phn* genes were affiliated with *Betaproteobacteria* members. Phylogenetic inferences of the *phnJ* gene, encoding the catalytic subunit involved in the cleavage of the C-P bond, were used to ascertain these assignments (Fig. S6 at <https://doi.org/10.5281/zenodo.6597409>). However, a high percentage of *phn* genes could not be assigned to known taxa (“not classified” in Fig. 5) with the lowest-common-ancestor (LCA) algorithm, especially in submarine sites.

In our metagenomic data set, the genomic organization of the *phn* operon differed from the canonical form (*phnGHIJKLM*) by gene order rearrangements and frequent insertion of additional genes encoding acetyltransferases, transporters, or phosphatases (Fig. S5 at <https://doi.org/10.5281/zenodo.6597409>). Such rearrangements are relatively common, as well as is the integration of other genes related to phosphorus cycling (44). In particular, *phn* gene operons reconstructed from the metagenomes of our study included genes coding for phosphonate transporters (*phnCDE*). Although the phosphonate transporter-encoding genes seemed particularly enriched in serpentinizing ecosystems than for other metagenomes (except for TAT.3 [Table S3 at <https://doi.org/10.5281/zenodo.6597409>]), we observed a notably low detection of genes involved in different phosphonate biosynthesis pathways. In some metagenomic *phn* operons, the *phnF* gene (encoding a transcriptional regulator) is replaced by other genes (*dasR*, *yvoA*, or *ycf*) encoding transcription regulators of the GntR family normally implicated in the regulation of genes from the *N*-acetylglucosamine-degrading pathway (46). Finally, an atypical operon identified in the metagenomes of PBHF showed an insertion of a NAD-phosphite oxidoreductase gene (*ptxD*, encoding phosphite degradation) between the

genes *phnE* and *phnG* (Fig. S5 at <https://doi.org/10.5281/zenodo.6597409>). This novel genomic organization could degrade phosphonate or phosphite since the Pn transporter encoded by *phnCDE* genes can also transport the phosphite ion inside the cells (29).

Compared to the case for the C-P lyase pathway, the genes involved in alternative phosphonate degradation pathways (47) were more sparse in serpentinizing systems, in particular genes involved in 2-aminoethylphosphonate degradation (reported in Table S3 at <https://doi.org/10.5281/zenodo.6597409>). Although we noted that genes involved in phosphate transport (*pstSABC*) were widely distributed in all metagenomes, the stress marker gene (*phoB*) for the inorganic phosphorus (Pi) depletion regulatory system (48) was enriched in serpentinite-hosted environments (in addition to TAT.3), but not in PBHF and CVA (Table S3). Such trends were not observed to serpentinization associated metagenomes for other genes potentially involved in Pi depletion, including the *lpxH*-like gene for cell membrane phospholipids substitution. Contrasting with genes involved in phosphonate catabolism, those encoding enzymes involved in phosphonate biosynthesis were almost only detected in deep-sea hydrothermal field (Tables S3 and S5).

DISCUSSION

Microbial communities in serpentinizing submarine ecosystems. Our analysis based on the taxonomic profiles showed that PBHF microbiomes clustered with those of continental serpentinizing systems, while LCHF microbiomes grouped with the basalt-hosted deep-sea vents. Although this result could be a consequence of sampling strategies (23, 24) or sequencing depth, it was unexpected since numerous phylotypes previously identified as specific to serpentinizing systems (13) including the LCMS (Lost City Methanosarcinales) or members of the genus *Hydrogenophaga* (9, 13) were indeed retrieved exclusively from the serpentinite-hosted metagenomes. Here, the peculiar situation of LCHF could be explained by the sequences assigned to sulfur oxidizers (e.g., *Gammaproteobacteria* and *Epsilonproteobacteria*) highly abundant in both LCHF and basalt-hosted deep-sea vents but nearly absent in all others serpentinizing sites (Fig. 2). Sulfur-oxidizing bacteria are typically found in sulfidic environments such as deep-sea hydrothermal vents (16, 49, 50), where they thrive by oxidation of reduced sulfur compounds at low oxygen tensions. Consistent with this observation, sulfides are barely detectable in continental serpentinite springs and PBHF, whereas the H₂S concentration in LCHF is more in the range (0.2 to 3 mM) of that of basalt-hosted hydrothermal vents, likely owing to its setting proximal to the Mid-Atlantic Ridge and its black smokers (51, 52). However, recent studies demonstrated the key role of sulfur-cycling in supporting microbial life in continental serpentinite-hosted systems, while potentially driven by phyla other than *Epsilonproteobacteria* or *Betaproteobacteria* (53, 54).

Functional capabilities within serpentinizing ecosystems. The overabundance of the genes encoding [NiFe]-hydrogenase group 3d (*hoxHY*) in all serpentinizing sites implies an importance of H₂ metabolism across terrestrial and submarine systems. This cytoplasmic hydrogenase was presumably essential for autotrophic growth of members of the *Betaproteobacteria* in The Cedars and CROMO serpentinites springs (19, 55). Such hydrogenases are known to be oxygen tolerant in *Ralstonia eutropha* H16 (56) uptake or fermentative production depending on electron acceptor availability (33, 34, 57, 58), which may be of benefit to microbial communities living at the interface between anoxic and oxic zones.

No specificity related to nitrogen metabolism was observed for microbial communities of serpentinizing systems compared to other hydrothermal systems. The diversity of geochemical characteristics in the serpentinizing systems made the neutral distribution of the *nifH* gene surprising. Indeed, nitrogen fixation was previously assumed to be more favorable under highly reducing and energetic conditions of submarine ecosystems rather than in continental environments (59). Further, dissimilatory nitrate reduction can also occur in almost all serpentinizing sites studied, based on the distribution of genetic markers. This pathway is presumed to be more advantageous than denitrification in marine environments,

because ammonia can be reused as a nitrogen source without expending further energy toward nitrogen fixation (60).

Despite the high concentration of methane in serpentinizing sites, the potential for methanotrophy or methanogenesis differed from one site to another (Fig. 3). Biological methane production has been demonstrated in some serpentinizing ecosystems but is inconsistent between sites (20, 21, 61). The variable origins of methane within these sites probably result from distinct mixtures of thermogenic, abiogenic, and microbial methane as proposed for two serpentinizing systems, CROMO and The Cedars (62). At CROMO, although known pathways for methanogenesis were not reported, a *Betaproteobacteria* and *Clostridia* were positively correlated with the concentration of methane (19). Here, these two taxonomic groups were abundantly identified in the terrestrial serpentinizing systems and shown to be linked to C-P lyase, hence nurturing the hypothesis that phosphonate catabolism is active and leads to methane production.

Unexpectedly, the extreme conditions of life imposed by serpentinization reactions did not lead to a convergence of the related functional profiles of the investigated genes (see Fig. S3 at <https://doi.org/10.5281/zenodo.6597409>). However, the similarities between LCHF and other deep-sea hydrothermal systems highlighted by our hierarchical clustering have already been reported through enrichments of genes involved in stress responses, homologous recombination, and chemotaxis (63). Microbial communities in these systems are subjected to numerous physical constraints (e.g., hydrostatic pressure and temperature) and chemical stresses (e.g., heavy metals and radionuclides) that are probably specific to deep-sea hydrothermal vents and reflected in their genomic adaptations. Additionally, high abundances of mobile genetic elements such as transposases were also reported as a distinctive characteristic of LCHF and deep-sea hydrothermal vents (64, 65). It has been suggested that lateral gene transfer is frequent and could be an important source of phylogenetic diversity (65) as well as a way to promote bacterial adaptation to ecological niches. In our study, the high abundance of mobile genetic elements did not appear to be restricted to deep-sea hydrothermal vents, as they were also very common in other systems (data not shown).

Metabolism of reduced phosphorus compounds in serpentinizing systems.

Phosphate (PO_4^{3-}), commonly used as a source of phosphorus (P) in aquatic ecosystems, was reported at very low concentrations ($<1 \mu\text{M}$) in several geochemical studies of serpentinizing systems (66), raising questions about the source of P and its mechanism of assimilation in serpentinite-hosted ecosystems. Indeed, phosphorus is an essential nutrient owing to its pivotal role in cell structure, storage, metabolism, and gene expression for all living organisms. The supervised approach highlighted the importance of the genes *phnGHIJKLM* in serpentinizing systems. These genes, encoding the functional core of the C-P lyase, should enable microorganisms to utilize phosphonates as source of P. In phosphate-limited marine environments, phosphonates are often considered an important source of P and could be metabolized by diverse microbial taxa, notably among *Proteobacteria* (45, 48). Among the enzymes involved in phosphonate catabolism, the C-P lyase pathway has been extensively studied because its enzymatic activity acting upon methylphosphonate esters as the substrate has been proposed as an explanation for the biological production of methane in oxygenated environments (48, 67, 68). Considering the abundance of genes involved in this pathway in serpentinizing systems (Table S3 at <https://doi.org/10.5281/zenodo.6597409>), as well as the enrichment of its regulon-encoding gene (*phoB* [Table S3]), we hypothesize that phosphonate catabolism could play an important role in the growth of microbial communities. The cleavage and incorporation of phosphonates in serpentinizing systems could prove an important means of phosphorus scavenging in this low-nutrient environment. Further, it is likely that in serpentinizing systems, methane or other hydrocarbons could be partially produced during the microbial degradation of phosphonates to inorganic phosphate (Fig. 6). The type of phosphonate substrates remains to be identified, because the C-P lyase cleaves a broad range of substrates according to the species, including alkylphosphonates, 2-aminoethylphosphonate, and phenylphosphonate (69).

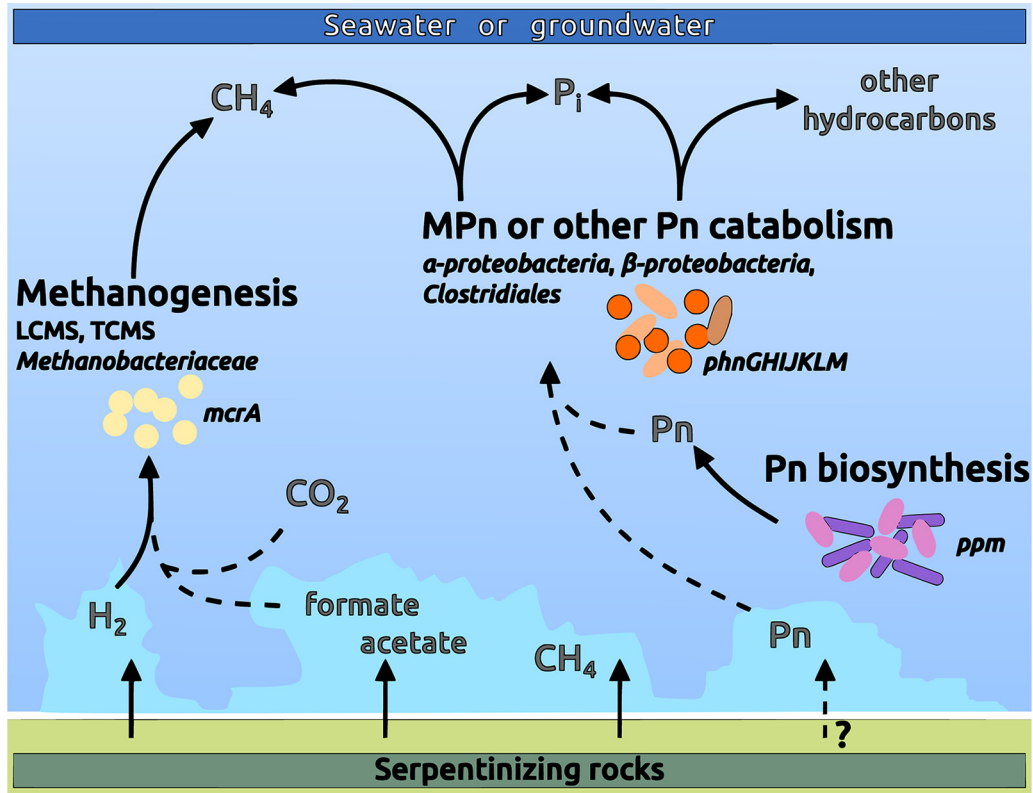


FIG 6 Schematic of the proposed links between the carbon and phosphorus cycles in serpentinizing environments. Reactions whose origin of the chemical compounds is unknown are indicated by dashed lines.

While other pathways are known to cleave C-P bonds, they require very substrate-specific hydrolases, such as phosphonoacetaldehyde hydrolase, phosphonoacetate hydrolase, and phosphonopyruvate hydrolase (70), or an oxidative cleavage with the 2-amino-1-hydroxyethylphosphonate dioxygenase (71), for which respective encoding genes showed a lower abundance, when detected, in serpentinite-hosted ecosystems than all genes involved in the C-P lyase pathway. The presence of many alternative pathways in the Santa Elena Ophiolite is therefore surprising, as the phosphate concentration of this site was higher than in other serpentinizing environments (21, 72). This result may be explained by the observation that the catabolism of phosphonates was not restricted to the phosphate-limited environment, being inorganic phosphate insensitive (73). This hypothesis is also supported by the occurrence of 3 Pi-independent phosphonate transporter-encoding genes (*aepX*) in its metagenome (74).

Although the C-P lyase pathway is now recognized as widely distributed in the contemporary biosphere (75), its identification in ecosystems that may have supported early life suggests a potential link to ancient metabolisms. Phosphonates were assumed to be present on the early Earth (76) because alkylphosphonates were detected in the Murchison meteorite (77). Furthermore, several mechanisms for organophosphate synthesis under prebiotic conditions have been reported (78) and may contribute to the tapestry of geochemical processes occurring in modern-day serpentinizing environments. At present, geochemical data are missing to identify the origins of phosphonates in serpentinizing sites. Alternatively, the detection of a phosphonate synthesis gene (*pepM*) could be associated with the presence of phosphonate in dissolved organic matter (68) and be a path to understand its distribution. However, genetic markers (*pepM*, *ppd*, *phpC*, and *mpnS*) (79) of this biosynthesis pathway were rarely retrieved in the metagenomes in this study (see Tables S3 and S5 at <https://doi.org/10.5281/zenodo.6597409>). Furthermore, abundances of these genes were not in concordance with those of C-P lyase-encoding genes. In most marine ecosystems, phosphonate could be synthesized by

some phylotypes of *Cyanobacteria* and Thaumarchaeota (80), two groups also usually found in serpentinizing ecosystems. Nonetheless, their ecological importance was not discussed here due to their low abundance, despite their potential strong adaptation to this extreme environment (81). Therefore, we could not identify any microbial phosphonate producer in these metagenomes and, thus, a biological source of phosphonates. Nonetheless, such sources cannot be excluded and should be explored in detail in future studies. Among the plausible hypotheses on the origin of phosphonates in serpentinized ecosystems, we propose (i) an external source that implies the transport of phosphonates to these ecosystems or (ii) a biological synthesis of phosphonates by an unknown metabolic pathway not dependent on *pepM*. In the first scenario, microbiomes influenced by serpentinization would benefit from the input of organic P sources which may be derived from fluids feeding the ecosystem (e.g., meteoric fluids or seawater) or stored in substratum rocks and released during alteration. Indeed, phosphonate, like phosphate, could be absorbed to metal (oxy)hydroxides (82) or carbonates, two secondary minerals produced by serpentinization (83). In Pi-limited marine settings, some heterotrophic bacteria are known to secrete metal chelators or redox-active antibiotics to dissolve these iron minerals to release P compounds (81, 84). Although we cannot conclude that such metabolisms are feasible in serpentinizing ecosystems, we observed an enrichment of genes coding for antibacterial (*yejA*) and iron complex (ABC.FEV.A) transporters together with C-P lyase pathway genes in their relative metagenomes (Fig. 5). Altogether, these results point toward the need to resolve sources of phosphonates that could contribute to the occurrence of this pathway.

Conclusion. This first comparative metagenomic study of serpentinite-hosted environments, although limited by the coherence of sampling strategies and the size of the data set, provides an objective framework to understand the functioning of these peculiar ecosystems. We showed a taxonomic similarity between PBHF and other terrestrial serpentinite-hosted ecosystems. At the same time, the LCHF microbial community was closer to deep basalt-hosted hydrothermal fields than continental ophiolites, despite the influence of serpentinization.

This study revealed shared functional capabilities among serpentinite-hosted ecosystems in response to environmental stress, the metabolism of abundant dihydrogen, and the metabolism of phosphorus for the first time in such environments. Our results are consistent with the generalized view of serpentinite environments but provide deeper insight into the array of factors that may control microbial activities in these ecosystems. Moreover, we show that metabolism of phosphonate, through the C-P lyase pathway, is widespread among alkaline serpentinizing systems and could play a crucial role in phosphorus and methane biogeochemical cycles. This study opens a new line of investigation of the metabolism of reduced phosphorus compounds in serpentinizing environments combining metagenomics and activity-based studies. From a broader perspective, similar approaches including more comprehensive multiomics data from serpentinite-hosted microbiomes could better constrain the microbial ecology of such ecosystems.

MATERIALS AND METHODS

Metagenomic data sets. Twenty-one publicly available metagenomic data sets from 6 serpentinizing systems (2 submarine, 4 terrestrial, and 4 other hydrothermal systems [2 deep-sea basaltic hydrothermal vents and 2 hot springs from continental volcanic area]) were retrieved from the NCBI Sequence Read Archive (SRA) and MG-RAST databases and are described in Table S1 at <https://doi.org/10.5281/zenodo.6597409>. To limit the bias arising from the use of different sequencing technologies and protocols, we selected only metagenomic data sets containing Illumina raw paired-end reads with a partial overlap.

Comparative metagenomic pipeline. With the objective of standardizing data processing, all 21 metagenomes (see Table S1 at <https://doi.org/10.5281/zenodo.6597409>) were reprocessed using an in-house bioinformatic pipeline for quality control, assembly, and annotation against taxonomic and functional databases. This pipeline was implemented in Snakemake (85) and deposited on the Github repository at <https://github.com/elfrouin/MetaGPipeline.git>. The raw paired-end reads of metagenomes were first merged using PandaSeq v2.8 (86) with default parameters. The merged reads were next processed by Trimmomatic v0.32 (87), which trimmed reads once the average quality in a 4-bp window fell below 15, cut bases off the extremities if below a quality score of 20, and removed short reads (<35 bp). The high-quality trimmed reads were finally assembled into contigs, longer than 200 bp, with IDBA-UD v1.1.1 (88). The quality of assemblies was checked by estimating the rate of

reads mapped to the contigs with BWA v0.7.12 (89). Gene prediction was done with Prodigal v47 (90), using the “-p meta” flag for metagenomic sequences. Gene coverage was computed with Bedtools v2.25.0 (91). The microbial taxonomic diversity of each metagenome was determined from the taxonomic annotation of predicted genes. Similarity searches were first performed against the NCBI non-redundant (nr) database with DIAMOND BLASTP v0.8.34 (92) using a maximal E value of 1×10^{-5} . MEGAN6 (93) was used to assign the annotated genes to their most confidently predicted taxonomic rank, by applying the lowest-common-ancestor (LCA) algorithm. A taxonomic contingency table was created by weighting annotated genes by their sequencing coverage. A first functional annotation of genes was performed by RPS-BLAST search (E value cutoff of 1×10^{-5}) against the Cluster of Orthologous Groups (COG) database (94). The second functional annotation was performed using the online tool GhostKOALA (the only nonautomated step) against the KEGG Orthology (KO) database with a minimum alignment score threshold of 50 (95). The coverage of functional genes was normalized between metagenomes using a scaling factor estimated by the trimmed mean of M values (TMM) method (96), implemented in the R package edgeR v3.14.0 (97). This normalization method was proposed to be more accurate for shotgun metagenomic analysis, in particular for the detection of differentially abundant genes (98, 99).

Statistical analyses. The taxonomic similarity between the 21 metagenomes was determined using relative abundances of archaeal and bacterial genera. Based on the normalized contingency table (exported from MEGAN6), a distance matrix was computed with the Jensen-Shannon divergence using the R package phyloseq v1.20.0 (100). The results were visualized using principal-coordinate analysis (PCoA) (Fig. 2). A nonparametric Kruskal-Wallis test combined with pairwise Wilcoxon tests (adjusted using Bonferroni's correction) was performed to detect genera with significant differential abundance among the subsets of metagenomes identified by PCoA. These specific microbial genera were added on the PCoA biplot.

Regarding the functional capabilities of the microbial community, the Pearson correlation and Ward's method were employed for agglomerative hierarchical clustering of metagenomes and annotated genes. The gene coverage per metagenome was visualized using heat maps, generated with the R package gplots v3.0.1. To discriminate the functional capabilities of serpentinizing versus nonserpentinizing systems, a random forest analysis was carried out using the R package Random Forest v4.6.12 (101) with 3,000 independent decision trees. Finally, a heat map was built with the top 50 genes contributing to segregate metagenomes related to serpentinizing ecosystems from the others (i.e., the genes with the highest value of mean decrease Gini, a measure of variable importance).

***phn* operon analysis.** Analyses of *phn* genes were carried out to identify their associated taxonomies and genomic organizations. Genes were queried against the NCBI nr database using BLASTN (with an E value of 1×10^{-6}). The determination of gene taxonomy was next assessed in two ways: (i) via the best BLAST hit and (ii) via the LCA algorithm implemented in MEGAN6. To estimate the percentage of microorganisms possessing a *phn* operon, the occurrences of *phnGHIJKLM* genes were normalized by the median abundance of 10 single-copy genes (listed in Table S6 at <https://doi.org/10.5281/zenodo.6597409>) in each sample. Finally, the structural organization of the operon *phn* was investigated from the metagenomic contigs. All contigs with at least the seven genes of the catalytic unit were reannotated with PROKKA v1.11 (102) to characterize the genomic context of the operon.

Phosphonate transport and biosynthesis. Despite the abundance of C-P lyase-encoding genes in our data set, well-known genes involved in phosphonate biosynthesis (i.e., *pepM*, *ppdA*, *ppdH*, and *mpnS*) were poorly detected with the approach described above. Therefore, we further examined the occurrence of these genes to confirm our results. For this purpose, we searched for homology against collections of hidden Markov models (HMMs) using the *hmmsearch* tool implemented in HMMER v3.3.2 (hmmsearch.org). First, homologs of genes were searched against the HMM database proposed by Acker and colleagues (80) and publicly available in their GitHub repository (https://github.com/slhogle/phosphonates/tree/master/data/phosphonate_biosynthesis/HMM_models). Furthermore, we looked for the presence of the highly conserved active-site motif EDK(X)5NS in sequences identified as *PepM*, since HMMs of *PepM* present significant similarities with the isocitrate lyase superfamily (78).

Additionally, we carried out a similar approach on the recently described *aepX* gene (74), encoding a Pi-independent phosphonate transport, using a curated database. Briefly, homologs of the *aepX* gene were identified using the Integrated Microbial Genomes (<https://img.jgi.doe.gov/>) homolog display tool and aligned with ClustalOmega implemented in the IMG/JGI website. Then, aligned amino acid sequences were profiled with the *hmmbuild* function. Sequence homology was searched in each metagenome applying the *hmmsearch* function with an E value of 1×10^{-80} .

ACKNOWLEDGMENTS

This project was financially supported by ANR projects deepOASES (14-CE01-0008-06) and MICROPRONY (19-CE02-0020-02), the Deep Carbon Observatory (Census for Deep Life: Comparative metagenomics of archaeal biofilms in carbonate chimneys associated with geographically isolated sites of serpentinization; principal investigator, M. O. Schrenk; funded by the Alfred P. Sloan Foundation). E.F. was awarded a Ph.D. fellowship from the French Ministry of Education and Scientific Research.

E.F., F.A., and G.E. designed the study. E.F., A.L., and F.A. performed the bioinformatics analyses and interpretations. E.F., A.L., F.A., and G.E. wrote the manuscript. M.O.S. reviewed drafts of the paper.

We declare no competing interests.

REFERENCES

- Delacour A, Früh-Green GL, Bernasconi SM, Schaeffer P, Kelley DS. 2008. Carbon geochemistry of serpentinites in the Lost City Hydrothermal System (30°N, MAR). *Geochim Cosmochim Acta* 72:3681–3702. <https://doi.org/10.1016/j.gca.2008.04.039>.
- McCollom TM, Seewald JS. 2007. Abiotic synthesis of organic compounds in deep-sea hydrothermal environments. *Chem Rev* 107:382–401. <https://doi.org/10.1021/cr0503660>.
- Schrenk MO, Brazelton WJ, Lang SQ. 2013. Serpentinization, carbon, and deep life. *Rev Mineral Geochem* 75:575–606. <https://doi.org/10.2138/rmg.2013.75.18>.
- Kelley DS, Karson JA, Früh-Green GL, Yoerger DR, Shank TM, Butterfield DA, Hayes JM, Schrenk MO, Olson EJ, Proskurowski G, Jakuba M, Bradley A, Larson B, Ludwig K, Glickson D, Buckman K, Bradley AS, Brazelton WJ, Roe K, Elend MJ, Delacour A, Bernasconi SM, Lilley MD, Baross JA, Summons RE, Sylva SP. 2005. A serpentinite-hosted ecosystem: the Lost City hydrothermal field. *Science* 307:1428–1434. <https://doi.org/10.1126/science.1102556>.
- Russell MJ, Hall AJ, Martin W. 2010. Serpentinization as a source of energy at the origin of life. *Geobiology* 8:355–371. <https://doi.org/10.1111/j.1472-4669.2010.00249.x>.
- Brazelton WJ, Schrenk MO, Kelley DS, Baross JA. 2006. Methane- and sulfur-metabolizing microbial communities dominate the Lost City hydrothermal field ecosystem. *Appl Environ Microbiol* 72:6257–6270. <https://doi.org/10.1128/AEM.00574-06>.
- Schrenk MO, Kelley DS, Bolton SA, Baross JA. 2004. Low archaeal diversity linked to subsurface geochemical processes at the Lost City Hydrothermal Field, Mid-Atlantic Ridge. *Environ Microbiol* 6:1086–1095. <https://doi.org/10.1111/j.1462-2920.2004.00650.x>.
- Pelletier B, Chevillon C, Menou J, Butscher J, Folcher E, Geoffroy C, Bore J, Panche J, Perrier J. 2006. Plongées, forage et cartographie Baie du Prony et Banc Gail, lagon Sud de Nouvelle-Calédonie, campagne 2005-NC-PL du N.O. ALIS 13–17 Juin 2005 et cartographie baie du Prony et canal Woodin N.O. ALIS 25–26 September 2005: Nouméa IRD Sept. 2006. *Missions Sci Terre Geol Geophys* 70:44.
- Quéméneur M, Bes M, Postec A, Mei N, Hamelin J, Monnin C, Chavagnac V, Payri C, Pelletier B, Guentas-Dombrowsky L, Gérard M, Pisapia C, Gérard E, Ménez B, Ollivier B, Erauso G. 2014. Spatial distribution of microbial communities in the shallow submarine alkaline hydrothermal field of the Prony Bay, New Caledonia. *Environ Microbiol Rep* 6:665–674. <https://doi.org/10.1111/1758-2229.12184>.
- Monnin C, Chavagnac V, Boulart C, Ménez B, Gérard M, Gérard E, Pisapia C, Quéméneur M, Erauso G, Postec A, Guentas-Dombrowsky L, Payri C, Pelletier B. 2014. Fluid chemistry of the low temperature hyperalkaline hydrothermal system of Prony Bay (New Caledonia). *Biogeosciences* 11: 5687–5706. <https://doi.org/10.5194/bg-11-5687-2014>.
- Postec A, Quéméneur M, Bes M, Mei N, Benaïssa F, Payri C, Monnin C, Pelletier B, Guentas L, Ollivier B, Gérard E, Pisapia C, Gérard M, Ménez B, Erauso G. 2015. Microbial diversity in a submarine carbonate edifice from the serpentinizing hydrothermal system of the Prony Bay (New Caledonia) over a 6-year period. *Front Microbiol* 6:857. <https://doi.org/10.3389/fmicb.2015.00857>.
- Suzuki S, Ishii S, Wu A, Cheung A, Tenney A, Wanger G, Kuenen JG, Nealson KH. 2013. Microbial diversity in The Cedars, an ultrabasic, ultra-reducing, and low salinity serpentinizing ecosystem. *Proc Natl Acad Sci U S A* 110:15336–15341. <https://doi.org/10.1073/pnas.1302426110>.
- Frouin E, Bes M, Ollivier B, Quéméneur M, Postec A, Debroas D, Armougom F, Erauso G. 2018. Diversity of rare and abundant prokaryotic phylotypes in the Prony Hydrothermal Field and comparison with other serpentinite-hosted ecosystems. *Front Microbiol* 9:102. <https://doi.org/10.3389/fmicb.2018.00102>.
- Woycheese KM, Meyer-Dombard DAR, Cardace D, Argayosa AM, Arcilla CA. 2015. Out of the dark: transitional subsurface-to-surface microbial diversity in a terrestrial serpentinizing seep (Manleluag, Pangasinan, the Philippines). *Front Microbiol* 6:44. <https://doi.org/10.3389/fmicb.2015.00044>.
- Louca S, Polz MF, Mazel F, Albright MBN, Huber JA, O'Connor MI, Ackermann M, Hahn AS, Srivastava DS, Crowe SA, Doebeli M, Parfrey LW. 2018. Function and functional redundancy in microbial systems. *Nat Ecol Evol* 2:936–943. <https://doi.org/10.1038/s41559-018-0519-1>.
- Reveillaud J, Redington E, McDermott J, Algar C, Meyer JL, Sylva S, Seewald J, German CR, Huber JA. 2016. Subseafloor microbial communities in hydrogen-rich vent fluids from hydrothermal systems along the Mid-Cayman Rise. *Environ Microbiol* 18:1970–1987. <https://doi.org/10.1111/1462-2920.13173>.
- Brazelton WJ, Nelson B, Schrenk MO. 2012. Metagenomic evidence for H₂ oxidation and H₂ production by serpentinite-hosted subsurface microbial communities. *Front Microbiol* 2:268. <https://doi.org/10.3389/fmicb.2011.00268>.
- Mei N, Postec A, Monnin C, Pelletier B, Payri CE, Ménez B, Frouin E, Ollivier B, Erauso G, Quéméneur M. 2016. Metagenomic and PCR-based diversity surveys of [FeFe]-hydrogenases combined with isolation of alkaliphilic hydrogen-producing bacteria from the serpentinite-hosted Prony Hydrothermal Field, New Caledonia. *Front Microbiol* 7:1301. <https://doi.org/10.3389/fmicb.2016.01301>.
- Twing KI, Brazelton WJ, Kubo MDY, Hyer AJ, Cardace D, Hoehler TM, McCollom TM, Schrenk MO. 2017. Serpentinization-influenced groundwater harbors extremely low diversity microbial communities adapted to high pH. *Front Microbiol* 8:308. <https://doi.org/10.3389/fmicb.2017.00308>.
- Brazelton WJ, Thornton CN, Hyer A, Twing KI, Longino AA, Lang SQ, Lilley MD, Früh-Green GL, Schrenk MO. 2017. Metagenomic identification of active methanogens and methanotrophs in serpentinite springs of the Voltri Massif, Italy. *Peer J* <https://doi.org/10.7717/peerj.2945>.
- Crespo-Medina M, Twing KI, Sánchez-Murillo R, Brazelton WJ, McCollom TM, Schrenk MO. 2017. Methane dynamics in a tropical serpentinizing environment: the Santa Elena Ophiolite, Costa Rica. *Front Microbiol* 8: 916. <https://doi.org/10.3389/fmicb.2017.00916>.
- Seyler LM, Brazelton WJ, McLean C, Putman LI, Hyer A, Kubo MDY, Hoehler T, Cardace D, Schrenk MO. 2020. Carbon assimilation strategies in ultrabasic groundwater: clues from the integrated study of a serpentinization-influenced aquifer. *mSystems* 5:e00607-19. <https://doi.org/10.1128/mSystems.00607-19>.
- McGonigle JM, Lang SQ, Brazelton WJ. 2020. Genomic evidence for formate metabolism by *Chloroflexi* as the key to unlocking deep carbon in Lost City microbial ecosystems. *Appl Environ Microbiol* 86:e02583-19. <https://doi.org/10.1128/AEM.02583-19>.
- Lang SQ, Früh-Green GL, Bernasconi SM, Brazelton WJ, Schrenk MO, McGonigle JM. 2018. Deeply-sourced formate fuels sulfate reducers but not methanogens at Lost City hydrothermal field. *Sci Rep* 8:755. <https://doi.org/10.1038/s41598-017-19002-5>.
- Ménez B, Pisapia C, Andreani M, Jamme F, Vanbellingen QP, Brunelle A, Richard L, Dumas P, Réfrégiers M. 2018. Abiotic synthesis of amino acids in the recesses of the oceanic lithosphere. *Nature* 564:59–63. <https://doi.org/10.1038/s41586-018-0684-z>.
- Lang SQ, Brazelton WJ. 2020. Habitability of the marine serpentinite subsurface: a case study of the Lost City hydrothermal field. *Philos Trans R Soc A* 378:20180429. <https://doi.org/10.1098/rsta.2018.0429>.
- Bradley AS, Fredricks H, Hinrichs K-U, Summons RE. 2009. Structural diversity of diether lipids in carbonate chimneys at the Lost City Hydrothermal Field. *Org Geochem* 40:1169–1178. <https://doi.org/10.1016/j.orggeochem.2009.09.004>.
- Karl DM. 2014. Microbially mediated transformations of phosphorus in the sea: new views of an old cycle. *Annu Rev Mar Sci* 6:279–337. <https://doi.org/10.1146/annurev-marine-010213-135046>.
- White AK, Metcalf WW. 2004. Two C-P lyase operons in *Pseudomonas stutzeri* and their roles in the oxidation of phosphonates, phosphite, and hypophosphite. *J Bacteriol* 186:4730–4739. <https://doi.org/10.1128/JB.186.14.4730-4739.2004>.

30. Saxena R, Dhakan DB, Mittal P, Waiker P, Chowdhury A, Ghatak A, Sharma VK. 2016. Metagenomic analysis of hot springs in central India reveals hydrocarbon degrading thermophiles and pathways essential for survival in extreme environments. *Front Microbiol* 7:2123. <https://doi.org/10.3389/fmicb.2016.02123>.
31. Igarashi Y, Kodama T. 1990. *Hydrogenobacter thermophilus*: its unusual physiological properties and phylogenetic position in the microbial world. *FEMS Microbiol Lett* 87:403–406. <https://doi.org/10.1111/j.1574-6968.1990.tb04944.x>.
32. Feinberg LF, Srikanth R, Vachet RW, Holden JF. 2008. Constraints on anaerobic respiration in the hyperthermophilic archaea *Pyrobaculum islandicum* and *Pyrobaculum aerophilum*. *Appl Environ Microbiol* 74:396–402. <https://doi.org/10.1128/AEM.02033-07>.
33. Peters JW, Schut GJ, Boyd ES, Mulder DW, Shepard EM, Broderick JB, King PW, Adams MWW. 2015. [FeFe]- and [NiFe]-hydrogenase diversity, mechanism, and maturation. *Biochim Biophys Acta* 1853:1350–1369. <https://doi.org/10.1016/j.bbamcr.2014.11.021>.
34. Søndergaard D, Pedersen CNS, Greening C. 2016. HydDB: a web tool for hydrogenase classification and analysis. *Sci Rep* 6:34212. <https://doi.org/10.1038/srep34212>.
35. Luton PE, Wayne JM, Sharp RJ, Riley PW. 2002. The *mcrA* gene as an alternative to 16S rRNA in the phylogenetic analysis of methanogen populations in landfill. *Microbiology (Reading)* 148:3521–3530. <https://doi.org/10.1099/00221287-148-11-3521>.
36. Vaksmaa A, Jetten MSM, Ettwig KF, Luke C. 2017. *McrA* primers for the detection and quantification of the anaerobic archaeal methanotroph ‘*Candidatus Methanoperedens nitroreducens*.’ *Appl Microbiol Biotechnol* 101:1631–1641. <https://doi.org/10.1007/s00253-016-8065-8>.
37. Inagaki F, Tsunogai U, Suzuki M, Kosaka A, Machiyama H, Takai K, Nunoura T, Nealson KH, Horikoshi K. 2004. Characterization of C1-metabolizing prokaryotic communities in methane seep habitats at the Kuroshima Knoll, southern Ryukyu arc, by analyzing *pmoA*, *mmoX*, *mxaF*, *mcrA*, and 16S rRNA genes. *Appl Environ Microbiol* 70:7445–7455. <https://doi.org/10.1128/AEM.70.12.7445-7455.2004>.
38. Berg IA, Kockelkorn D, Ramos-Vera WH, Say RF, Zarzycki J, Hügler M, Alber BE, Fuchs G. 2010. Autotrophic carbon fixation in archaea. *Nat Rev Microbiol* 8:447–460. <https://doi.org/10.1038/nrmicro2365>.
39. Nakasugi K, Svenson CJ, Neilan BA. 2006. The competence gene, *comF*, from *Synechocystis* sp. strain PCC 6803 is involved in natural transformation, phototactic motility and piliation. *Microbiology (Reading)* 152:3623–3631. <https://doi.org/10.1099/mic.0.29189-0>.
40. Abouhamad WN, Manson M, Gibson MM, Higgins CF. 1991. Peptide transport and chemotaxis in *Escherichia coli* and *Salmonella typhimurium*: characterization of the dipeptide permease (Dpp) and the dipeptide-binding protein. *Mol Microbiol* 5:1035–1047. <https://doi.org/10.1111/j.1365-2958.1991.tb01876.x>.
41. Hay ID, Rehm ZU, Moradali MF, Wang Y, Rehm BHA. 2013. Microbial alginate production, modification and its applications. *Microb Biotechnol* 6:637–650. <https://doi.org/10.1111/1751-7915.12076>.
42. Ito M, Morino M, Krulwich TA. 2017. Mrp antiporters have important roles in diverse bacteria and archaea. *Front Microbiol* 8:2325. <https://doi.org/10.3389/fmicb.2017.02325>.
43. Manav MC, Sofos N, Hove-Jensen B, Brodersen DE. 2018. The Abc of phosphonate breakdown: a mechanism for bacterial survival. *Bioessays* 40:1800091. <https://doi.org/10.1002/bies.201800091>.
44. Huang J, Su Z, Xu Y. 2005. The evolution of microbial phosphonate degradative pathways. *J Mol Evol* 61:682–690. <https://doi.org/10.1007/s00239-004-0349-4>.
45. Sosa OA, Burrell TJ, Wilson ST, Foreman RK, Karl DM, Repeta DJ. 2020. Phosphonate cycling supports methane and ethylene supersaturation in the phosphate-depleted western North Atlantic Ocean. *Limnol Oceanogr* 65:2443–2459. <https://doi.org/10.1002/lno.11463>.
46. Resch M, Schiltz E, Titgemeyer F, Müller YA. 2010. Insight into the induction mechanism of the GntR/HutC bacterial transcription regulator *yvoA*. *Nucleic Acids Res* 38:2485–2497. <https://doi.org/10.1093/nar/gkp1191>.
47. Villarreal-Chiu J, Quinn J, McGrath J. 2012. The genes and enzymes of phosphonate metabolism by bacteria, and their distribution in the marine environment. *Front Microbiol* 3:19. <https://doi.org/10.3389/fmicb.2012.00019>.
48. Sosa OA, Repeta DJ, Delong EF, Ashkezari MD, Karl DM. 2019. Phosphate-limited ocean regions select for bacterial populations enriched in the carbon–phosphorus lyase pathway for phosphonate degradation. *Environ Microbiol* 21:2402–2414. <https://doi.org/10.1111/1462-2920.14628>.
49. Urich T, Lanzén A, Stokke R, Pedersen RB, Bayer C, Thorseth IH, Schleper C, Steen IH, Øvreås L. 2014. Microbial community structure and functioning in marine sediments associated with diffuse hydrothermal venting assessed by integrated meta-omics. *Environ Microbiol* 16:2699–2710. <https://doi.org/10.1111/1462-2920.12283>.
50. Flores GE, Campbell JH, Kirshtein JD, Meneghin J, Podar M, Steinberg JL, Seewald JS, Tivey MK, Voytek MA, Yang ZK, Reysenbach A-L. 2011. Microbial community structure of hydrothermal deposits from geochemically different vent fields along the Mid-Atlantic Ridge. *Environ Microbiol* 13:2158–2171. <https://doi.org/10.1111/j.1462-2920.2011.02463.x>.
51. Konn C, Charlou JL, Holm NG, Mousis O. 2015. The production of methane, hydrogen, and organic compounds in ultramafic-hosted hydrothermal vents of the Mid-Atlantic Ridge. *Astrobiology* 15:381–399. <https://doi.org/10.1089/ast.2014.1198>.
52. Kelley DS, Karson JA, Blackman DK, Fruh-Green GL, Butterfield DA, Lilley MD, Olson EJ, Schrenk MO, Roe KK, Lebon GT, Rivizzigno P, AT3-60 Shipboard Party. 2001. An off-axis hydrothermal vent field near the Mid-Atlantic Ridge at 30 degrees N. *Nature* 412:145–149. <https://doi.org/10.1038/35084000>.
53. Schwarzenbach EM, Vrijmoed JC, Engelmann JM, Liesegang M, Wiechert U, Rohne R, Plümper O. 2021. Sulfide dissolution and awaruite formation in continental serpentinization environments and its implications to supporting life. *J Geophys Res Solid Earth* 126:e2021JB021758. <https://doi.org/10.1029/2021JB021758>.
54. Sabuda MC, Brazelton WJ, Putman LI, McCollom TM, Hoehler TM, Kubo MDY, Cardace D, Schrenk MO. 2020. A dynamic microbial sulfur cycle in a serpentinizing continental ophiolite. *Environ Microbiol* 22:2329–2345. <https://doi.org/10.1111/1462-2920.15006>.
55. Suzuki S, Kuenen JG, Schipper K, van der Velde S, Ishii S, Wu A, Sorokin DY, Tenney A, Meng X, Morrill PL, Kamagata Y, Muyzer G, Nealson KH. 2014. Physiological and genomic features of highly alkaliphilic hydrogen-utilizing Betaproteobacteria from a continental serpentinizing site. *Nat Commun* 5:3900. <https://doi.org/10.1038/ncomms4900>.
56. Burgdorf T, Lenz O, Buhrke T, van der Linden E, Jones AK, Albracht SPJ, Friedrich B. 2005. [NiFe]-hydrogenases of *Ralstonia eutropha* H16: modular enzymes for oxygen-tolerant biological hydrogen oxidation. *J Mol Microbiol Biotechnol* 10:181–196. <https://doi.org/10.1159/000091564>.
57. Greening C, Biswas A, Carere CR, Jackson CJ, Taylor MC, Stott MB, Cook GM, Morales SE. 2016. Genomic and metagenomic surveys of hydrogenase distribution indicate H₂ is a widely utilised energy source for microbial growth and survival. *ISME J* 10:761–777. <https://doi.org/10.1038/ismej.2015.153>.
58. Boyd E, Schut G, Adams M, Peters J. 2014. Hydrogen metabolism and the evolution of biological respiration. *Microbe Mag* 9:361–367. <https://doi.org/10.1128/microbe.9.361.1>.
59. Brazelton WJ, Mehta MP, Kelley DS, Baross JA. 2011. Physiological differentiation within a single-species biofilm fueled by serpentinization. *mBio* 2:e00127-11. <https://doi.org/10.1128/mBio.00127-11>.
60. Kuypers MMM, Marchant HK, Kartal B. 2018. The microbial nitrogen-cycling network. *Nat Rev Microbiol* 16:263–276. <https://doi.org/10.1038/nrmicro.2018.9>.
61. Kohl L, Cumming E, Cox A, Rietze A, Morrissey L, Lang SQ, Richter A, Suzuki S, Nealson KH, Morrill PL. 2016. Exploring the metabolic potential of microbial communities in ultra-basic, reducing springs at The Cedars, CA, USA: experimental evidence of microbial methanogenesis and heterotrophic acetogenesis. *J Geophys Res Biogeosci* 121:2015JG003233.
62. Wang DT, Gruen DS, Lollar BS, Hinrichs K-U, Stewart LC, Holden JF, Hristov AN, Pohlman JW, Morrill PL, Könneke M, Delwiche KB, Reeves EP, Sutcliffe CN, Ritter DJ, Seewald JS, McIntosh JC, Hemond HF, Kubo MD, Cardace D, Hoehler TM, Ono S. 2015. Nonequilibrium clumped isotope signals in microbial methane. *Science* 348:428–431. <https://doi.org/10.1126/science.aaa4326>.
63. Xie W, Wang FP, Guo L, Chen ZL, Sievert SM, Meng J, Huang GR, Li YX, Yan QY, Wu S, Wang X, Chen SW, He GY, Xiao X, Xu AL. 2011. Comparative metagenomics of microbial communities inhabiting deep-sea hydrothermal vent chimneys with contrasting chemistries. *ISME J* 5:414–426. <https://doi.org/10.1038/ismej.2010.144>.
64. Anderson RE, Sogin ML, Baross JA. 2014. Evolutionary strategies of viruses, bacteria and archaea in hydrothermal vent ecosystems revealed through metagenomics. *PLoS One* 9:e109696. <https://doi.org/10.1371/journal.pone.0109696>.
65. Brazelton WJ, Baross JA. 2009. Abundant transposases encoded by the metagenome of a hydrothermal chimney biofilm. *ISME J* 3:1420–1424. <https://doi.org/10.1038/ismej.2009.79>.

66. Cardace D, Meyer-Dombard DAR, Woycheese K, Arcilla CA. 2015. Feasible metabolic schema associated with high pH springs in the Philippines. *Front Microbiol* 6:10. <https://doi.org/10.3389/fmicb.2015.00010>.
67. Sosa OA, Repeta DJ, Ferrón S, Bryant JA, Mende DR, Karl DM, DeLong EF. 2017. Isolation and characterization of bacteria that degrade phosphonates in marine dissolved organic matter. *Front Microbiol* 8:1786. <https://doi.org/10.3389/fmicb.2017.01786>.
68. Repeta DJ, Ferrón S, Sosa OA, Johnson CG, Repeta LD, Acker M, DeLong EF, Karl DM. 2016. Marine methane paradox explained by bacterial degradation of dissolved organic matter. *Nature Geosci* 9:884–887. <https://doi.org/10.1038/ngeo2837>.
69. Schowanek D, Verstraete W. 1990. Phosphonate utilization by bacterial cultures and enrichments from environmental samples. *Appl Environ Microbiol* 56:895–903. <https://doi.org/10.1128/aem.56.4.895-903.1990>.
70. Sviridov AV, Shushkova TV, Zelenkova NF, Vinokurova NG, Morgunov IG, Ermakova IT, Leontievsky AA. 2012. Distribution of glyphosate and methylphosphonate catabolism systems in soil bacteria *Ochrobactrum anthropi* and *Achromobacter* sp. *Appl Microbiol Biotechnol* 93:787–796. <https://doi.org/10.1007/s00253-011-3485-y>.
71. McSorley FR, Wyatt PB, Martinez A, DeLong EF, Hove-Jensen B, Zechel DL. 2012. PhnY and PhnZ comprise a new oxidative pathway for enzymatic cleavage of a carbon–phosphorus bond. *J Am Chem Soc* 134:8364–8367. <https://doi.org/10.1021/ja302072f>.
72. Crespo-Medina M, Twing KI, Kubo MDY, Hoehler TM, Cardace D, McCollom T, Schrenk MO. 2014. Insights into environmental controls on microbial communities in a continental serpentinite aquifer using a microcosm-based approach. *Front Microbiol* 5:604. <https://doi.org/10.3389/fmicb.2014.00604>.
73. Chin JP, Quinn JP, McGrath JW. 2018. Phosphate insensitive amino-phosphonate mineralisation within oceanic nutrient cycles. *ISME J* 12: 973–980. <https://doi.org/10.1038/s41396-017-0031-7>.
74. Murphy ARJ, Scanlan DJ, Chen Y, Adams NBP, Cadman WA, Bottrill A, Bending G, Hammond JP, Hitchcock A, Wellington EMH, Lidbury IDEA. 2021. Transporter characterisation reveals aminoethylphosphonate mineralisation as a key step in the marine phosphorus redox cycle. *Nat Commun* 12:4554. <https://doi.org/10.1038/s41467-021-24646-z>.
75. Quinn JP, Kulakova AN, Cooley NA, McGrath JW. 2007. New ways to break an old bond: the bacterial carbon-phosphorus hydrolases and their role in biogeochemical phosphorus cycling. *Environ Microbiol* 9: 2392–2400. <https://doi.org/10.1111/j.1462-2920.2007.01397.x>.
76. McGrath JW, Chin JP, Quinn JP. 2013. Organophosphonates revealed: new insights into the microbial metabolism of ancient molecules. *Nat Rev Microbiol* 11:412–419. <https://doi.org/10.1038/nrmicro3011>.
77. Cooper GW, Onwo WM, Cronin JR. 1992. Alkyl phosphonic acids and sulfonic acids in the Murchison meteorite. *Geochim Cosmochim Acta* 56: 4109–4115. [https://doi.org/10.1016/0016-7037\(92\)90023-c](https://doi.org/10.1016/0016-7037(92)90023-c).
78. Gull M, Cafferty B, Hud N, Pasek M. 2017. Silicate-promoted phosphorylation of glycerol in non-aqueous solvents: a prebiotically plausible route to organophosphates. *Life* 7:29. <https://doi.org/10.3390/life7030029>.
79. Horsman GP, Zechel DL. 2017. Phosphonate biochemistry. *Chem Rev* 117:5704–5783. <https://doi.org/10.1021/acs.chemrev.6b00536>.
80. Acker M, Hogle SL, Berube PM, Hackl T, Stepanauskas R, Chisholm SW, Repeta DJ. 2020. Phosphonate production by marine microbes: exploring new sources and potential function. Cold Spring Harbor Laboratory, Cold Spring Harbor, NY.
81. Kamran A, Sauter K, Reimer A, Wacker T, Reitner J, Hoppert M. 2020. Cyanobacterial mats in calcite-precipitating serpentinite-hosted alkaline springs of the Voltri Massif, Italy. *Microorganisms* 9:62. <https://doi.org/10.3390/microorganisms9010062>.
82. Ruttenberg KC, Sulak DJ. 2011. Sorption and desorption of dissolved organic phosphorus onto iron (oxyhydr)oxides in seawater. *Geochim Cosmochim Acta* 75:4095–4112. <https://doi.org/10.1016/j.gca.2010.10.033>.
83. Huang R, Lin C-T, Sun W, Ding X, Zhan W, Zhu J. 2017. The production of iron oxide during peridotite serpentinization: influence of pyroxene. *Geosci Front* 8:1311–1321. <https://doi.org/10.1016/j.gsf.2017.01.001>.
84. McRose DL, Newman DK. 2021. Redox-active antibiotics enhance phosphorus bioavailability. *Science* 371:1033–1037. <https://doi.org/10.1126/science.abd1515>.
85. Koster J, Rahmann S. 2012. Snakemake: a scalable bioinformatics workflow engine. *Bioinformatics* 28:2520–2522. <https://doi.org/10.1093/bioinformatics/bts480>.
86. Masella AP, Bartram AK, Truszkowski JM, Brown DG, Neufeld JD. 2012. PANDaseq: paired-end assembler for illumina sequences. *BMC Bioinformatics* 13:31. <https://doi.org/10.1186/1471-2105-13-31>.
87. Bolger AM, Lohse M, Usadel B. 2014. Trimmomatic: a flexible trimmer for Illumina sequence data. *Bioinformatics* 30:2114–2120. <https://doi.org/10.1093/bioinformatics/btu170>.
88. Peng Y, Leung H, Yiu S, Chin F. 2012. IDBA-UD: a de novo assembler for single-cell and metagenomic sequencing data with highly uneven depth. *Bioinformatics* 28:1420–1428. <https://doi.org/10.1093/bioinformatics/bts174>.
89. Li H, Durbin R. 2009. Fast and accurate short read alignment with Burrows-Wheeler transform. *Bioinformatics* 25:1754–1760. <https://doi.org/10.1093/bioinformatics/btp324>.
90. Hyatt D, Chen GL, Locascio PF, Land ML, Larimer FW, Hauser LJ. 2010. Prodigal: prokaryotic gene recognition and translation initiation site identification. *BMC Bioinformatics* 11:119. <https://doi.org/10.1186/1471-2105-11-119>.
91. Quinlan AR, Hall IM. 2010. BEDTools: a flexible suite of utilities for comparing genomic features. *Bioinformatics* 26:841–842. <https://doi.org/10.1093/bioinformatics/btq033>.
92. Buchfink B, Xie C, Huson DH. 2015. Fast and sensitive protein alignment using DIAMOND. *Nat Methods* 12:59–60. <https://doi.org/10.1038/nmeth.3176>.
93. Huson DH, Beier S, Flade I, Górská A, El-Hadidi M, Mitra S, Ruscheweyh H-J, Tappu R. 2016. MEGAN community edition—interactive exploration and analysis of large-scale microbiome sequencing data. *PLoS Comput Biol* 12:e1004957. <https://doi.org/10.1371/journal.pcbi.1004957>.
94. Tatusov RL, Fedorova ND, Jackson JD, Jacobs AR, Kiryutin B, Koonin EV, Krylov DM, Mazumder R, Mekhedov SL, Nikolskaya AN, Rao BS, Smirnov S, Sverdlov AV, Vasudevan S, Wolf YI, Yin JJ, Natale DA. 2003. The COG database: an updated version includes eukaryotes. *BMC Bioinformatics* 4:41. <https://doi.org/10.1186/1471-2105-4-41>.
95. Kanehisa M, Sato Y, Kawashima M, Furumichi M, Tanabe M. 2016. KEGG as a reference resource for gene and protein annotation. *Nucleic Acids Res* 44:D457–D462. <https://doi.org/10.1093/nar/gkv1070>.
96. Robinson MD, Oshlack A. 2010. A scaling normalization method for differential expression analysis of RNA-seq data. *Genome Biol* 11:R25. <https://doi.org/10.1186/gb-2010-11-3-r25>.
97. Robinson MD, McCarthy DJ, Smyth GK. 2010. edgeR: a Bioconductor package for differential expression analysis of digital gene expression data. *Bioinformatics* 26:139–140. <https://doi.org/10.1093/bioinformatics/btp616>.
98. Pereira MB, Wallroth M, Jonsson V, Kristiansson E. 2018. Comparison of normalization methods for the analysis of metagenomic gene abundance data. *BMC Genomics* 19:274. <https://doi.org/10.1186/s12864-018-4637-6>.
99. Jonsson V, Österlund T, Nerman O, Kristiansson E. 2016. Statistical evaluation of methods for identification of differentially abundant genes in comparative metagenomics. *BMC Genomics* 17:78. <https://doi.org/10.1186/s12864-016-2386-y>.
100. McMurdie PJ, Holmes S. 2013. phyloseq: an R package for reproducible interactive analysis and graphics of microbiome census data. *PLoS One* 8:e61217. <https://doi.org/10.1371/journal.pone.0061217>.
101. Liaw A, Wiener M. 2002. Classification and regression by randomForest. *R News* 2:18–22.
102. Seemann T. 2014. Prokka: rapid prokaryotic genome annotation. *Bioinformatics* 30:2068–2069.