



HAL
open science

Analysis of the *Brucella suis* Twin Arginine Translocation System and Its Substrates Shows That It Is Essential for Viability

Elia Riquelme, Sabina Omarova, Bérengère Ize, David O'callaghan

► **To cite this version:**

Elia Riquelme, Sabina Omarova, Bérengère Ize, David O'callaghan. Analysis of the *Brucella suis* Twin Arginine Translocation System and Its Substrates Shows That It Is Essential for Viability. *Infection and Immunity*, 2023, 91 (1), 10.1128/iai.00459-22 . hal-04041496

HAL Id: hal-04041496

<https://amu.hal.science/hal-04041496>

Submitted on 23 Nov 2023

HAL is a multi-disciplinary open access archive for the deposit and dissemination of scientific research documents, whether they are published or not. The documents may come from teaching and research institutions in France or abroad, or from public or private research centers.

L'archive ouverte pluridisciplinaire **HAL**, est destinée au dépôt et à la diffusion de documents scientifiques de niveau recherche, publiés ou non, émanant des établissements d'enseignement et de recherche français ou étrangers, des laboratoires publics ou privés.

Analysis of the *Brucella suis* twin arginine translocation system and its substrates show that it is essential for viability

Elia Riquelme^{1,2}, Sabina Omarova^{1,2}, Bérengère Ize³ and David O'Callaghan^{1,2}

¹ VBIC, INSERM U1047, Université de Montpellier, UFR Médecine, Nîmes, France.

² CNR Brucella, CHU Nîmes, France.

³ LISM-UMR7255 CNRS, Aix-Marseille Université, Institut de Microbiologie de la Méditerranée, Marseille, France.

Running Title: *Brucella suis* Tat is essential

Corresponding author: David O'Callaghan

david.o-callaghan@umontpellier.fr

Abstract

Bacteria use the Twin Arginine Translocator (Tat) system to export folded proteins from the cytosol to the bacterial envelope or to the extracellular environment. As with most Gram-negative bacteria, the Tat system of the zoonotic pathogen *Brucella* is encoded by a three gene operon; *tatABC*. Our attempts, using several different strategies, to create a *Brucella suis* 1330 *tat* mutant were all unsuccessful. This suggests that, for *B. suis*, Tat is essential and is in contrast to a recent report for *B. melitensis*. This was supported by our findings that two molecules that inhibit the *Pseudomonas aeruginosa* Tat system also inhibit *B. suis*, *B. melitensis* and *B. abortus* growth *in vitro*. In a bioinformatic screen of the *B. suis* 1330 proteome, we identified 28 proteins with putative Tat signal sequences. We used a heterologous reporter assay based on export of the Tat dependent amidase AmiA using the Tat signal sequences from the *Brucella* proteins to confirm that 20 of the 28 candidates can engage the Tat pathway.

Introduction

Translocation of proteins across membranes is essential for all aspects of the physiology of bacteria, ranging from basic metabolic processes to pathogenic/symbiotic interactions with a host. Gram negative bacteria use two pathways to translocate proteins across the cytoplasmic membrane; the Sec system, which exports unfolded proteins, and the Tat system, which exports folded proteins. The Tat pathway is found in many bacteria, including most animal and plant pathogens. It has the unique ability to transport fully-folded proteins, including a subset that binds redox cofactors, across the cytoplasmic membrane [1]. Tat substrates are involved in a large array of bacterial processes such as respiratory metabolism, cellular division, motility, adaptation of bacteria to particular environments, or biofilm formation [2–5].

Proteins that are targeted to the Sec or Tat pathways have specific N-terminal signal peptides that allow their recognition by their respective machineries. Sec and Tat signal peptides have the same overall tripartite organization (n-, h- and c-region), but Tat signal peptides are longer than their Sec counterparts (27 to 35 aa for Tat signal peptides versus 17 to 24 aa for Sec signal peptides). One of the main features of Tat signal peptides is the presence of a distinctive twin arginine motif S/TRRxFLK, in the n-region, where the arginine pair is almost invariant and other amino acids are present at a frequency >50%. Another characteristic of Tat signal peptides is that their h-region tends to be less hydrophobic than the corresponding region of Sec signal peptides [6]. These characteristics have allowed the development of three prediction programs that recognize the features of Tat targeting sequences [7–9].

While in most bacteria, *tat* mutants are viable, in a few organisms a functional Tat system appears to be essential under standard laboratory conditions. These include *Haloferox volcanii* [10], *Sinorhizobium meliloti* [11] and *Mycobacterium tuberculosis* [12]. In other bacteria,

including *Burkholderia thailandensis* [13], *Myxococcus xanthus* [14], *Mycobacterium smegmatis* [15] and *Shewanella oneidensis* [16], a functional Tat system is needed for optimal growth in aerobic conditions. Conversely, for *E. coli* O157:H7 [17], *Pseudomonas aeruginosa* [5], *Agrobacterium tumefaciens* [18], and *Ralstonia solanacearum* [19] the Tat system is required for anaerobic growth.

Brucella are facultative intracellular pathogens. Intracellular survival and multiplication of *Brucella* are essential to the establishment, development and chronicity of the disease. *Brucella* enters cells via lipid rafts, a route that ensures their intracellular survival by avoiding fusion of their membrane-bound compartment with lysosomes. *Brucella* then uses its VirB type IV secretion system [20] to secrete effector proteins into the infected cells which direct the maturation of the vacuole into a replication-permissive organelle derived from the endoplasmic reticulum [21].

The genome sequences of all *Brucella* species contain genes that encode a Tat system and proteins have been annotated as 'Tat dependent'. A recent report describes the construction and characterization of a *B. melitensis* *tat* mutant, suggesting that the Tat system is required for stress resistance and virulence [22]. Here we report that we are unable to create a *Brucella suis* *tat* mutant and we demonstrate that two inhibitors of the *P. aeruginosa* Tat system inhibit the *in vitro* growth of several strains of *Brucella* in a dose dependent manner, suggesting that Tat is essential for viability. A bioinformatic screen for proteins with Tat signal sequences allowed us to identify a set of potential Tat substrates for *B. suis*, and we were able to confirm that the signal peptides of 20 of these engage the Tat pathway using a heterologous translocation reporter system.

Materials and Methods

Bacterial strains, growth conditions, plasmids.

The bacterial strains and plasmids used in this study are listed in Table 1. *E. coli* strains were routinely grown in Lysogeny broth (LB) or on LB plates and *Brucella* on Trypticase Soy (TS). When required, the medium was supplemented with ampicillin (Amp; 100 µg/mL), Kanamycin (Kan; 25µg/mL) or Chloramphenicol (Cm; 30µg/mL). N-Phenyl maleimide and Bay 11-7082 were from Sigma. Plasmid constructions were generated using standard methods or synthesised commercially (Genwiz).

***In silico* prediction of Tat substrates and signal sequence peptide sites.**

A BLASTP search with the conserved SRRXFLK motif was used to identify putative Tat substrates encoded by the *B. suis* 1330 genome. Candidate substrates were analysed using the three existing programs for Tat signal prediction: TatP (<http://www.cbs.dtu.dk/services/TatP/> [8]), TATFIND (<http://signalfind.org/tatfind.html> [9]) and PRED-TAT (<http://www.compgen.org/tools/PRED-TAT/> [7]).

For signal peptide domain prediction the SignalP 3.0 (HMM) and Phobius servers were used. Most likely signal peptide cleavage sites were inferred from Sec, Tat and lipoprotein signal peptide predictions algorithms (SignalP 3.0, LipoP 1.0, TatP, TATFIND and PRED-TAT).

Plasmid constructions for the different strategies to obtain a *tat* mutant in *Brucella*

Clean deletion of the *tatABC* operon The genomic sequences immediately upstream (535bp) and downstream (512bp) of the *tatABC* operon were amplified from *B. suis* 1330 genomic DNA as template with *Pfu* DNA polymerase (Life technologies, USA) using primer pairs tatA-F1FW/tatA-F1REV and tatC-F2FWD/tatC-F2REV. Primers used for the constructions in this

study are described in Supplemental Table S1. The PCR products were cloned into pUC29 and, after sequence verification (MWG Operon Eurofins, Germany), excised using the restriction introduced in the primers and ligated together in the SacB dependent suicide vector pIN60, generating pIN365.

Non polar deletion and marked *tatA* mutants. The same strategy was used to create a non polar deletion of *tatA*, with the same DNA fragment downstream of *tatA* and a 472 bp region upstream of *tatA* designed so that the ATG of *tatA* is followed by the second codon of *tatB*. This was amplified with the *tatA*2UPstream-F1FWD/*tatA*2UPstream-F1FWD primer pair. Again, the two fragments were ligated into pIN60 to give pIN367. To allow positive and visual selection of an insertion, we introduced replaced the *tatA* sequence with a chloramphenicol resistance cassette and *gfp*, amplified from pIN310 with primers eGFPXbaI/CmRMfeI giving a 1583bp. After sequence verification this was cloned into pIN367 as a XbaI and MfeI fragment to give pIN368.

Conditional mutant in the Tat system An anhydrotetracycline-inducible *tatABC* operon was created by inserting the *tetR* repressor sequence and the Tn10 *tetA* promoter/operator (*tet-p/o*) to drive expression of the *tat* operon. This was used to replace the native promoter of the *tat* operon, allowing us to control its expression by adding or removing anhydrotetracycline. We designed two constructs, the first contains 400bp upstream of the *tatABC* operon (F1) and the kanamycin resistance gene (810bp). The second construct had the *tetR* repressor gene and the promoter of the divergent *tetA* resistance gene followed by a 499bp sequence containing *tatA* and part of *tatB*. These two sequences were synthesized commercially (Genewiz) and cloned together in a SacB dependent suicide vector (pIN11) to generate plasmid pIN371.

N-Phenyl maleimide and Bay 11-7082 inhibition assay

Brucella strains were grown overnight in TS broth. Stock solutions of N-Phenyl maleimide or Bay 11-7082 at 100mM were made in ethanol and DMSO respectively. Serial 2 fold dilutions of each inhibitor were made in TS broth starting at 200 μ M. One mL of each dilution was inoculated with *B. suis*, *B. abortus* and *B. melitensis* at an OD₆₀₀ of 0.05 and incubated at 37C with or without shaking (200rpm). After 24h (shaking) or 48h (static), the OD₆₀₀ was measured in a spectrophotometer. Results are expressed as the % of the OD of a culture with no inhibitor, experiments were repeated three times.

Heterologous system to detect predicted *Brucella* Tat substrates

DNA sequences where the sequence encoding the signal sequence of the *E. coli* AmiA protein was replaced by the signal sequences of the 28 predicted *Brucella* Tat substrates were synthesised commercially (Genwiz) and cloned into plasmid pssAmiA-AmiAH [23]. A total of 32 plasmids were constructed to account for alternative cleavage sites (Table S2). *E. coli* strains (MC4100, MC4100 Δ ssamiAC, and MC4100 Δ tatC) were transformed with these plasmids. Strains with no plasmid or transformed with a plasmid encoding wild type AmiA were used as controls.

Results

Characterisation of the Tat system in *Brucella*

All *Brucella* have the typical *tatABC* operon structure [24]. Alignment of the *tatABC* genes from different *Brucella* species showed a high degree of homology: *tatA* shows 99.54% identity, *tatB* at least 94.53 % and *tatC* 99.88% across the genus (data not shown). At the amino acid level, the annotated TatA sequences in Genbank have protein sequences of either 72 or 80 residues, however this is probably just an annotation error with an incorrect start codon used in the longer versions. The 72 amino acid sequences show 100% identity to each other. TatC also shows 100% sequence identity. TatB sequences vary in length from 184 to 203 aa. While this is partly due to different predicted start sites, TatB displays a greater degree of heterogeneity than TatA and C; there are numerous deletions in a proline rich region in the TatB proteins of *B. ovis*, *B. vulpis* and several atypical isolates, as well as two shorter deletions at the C-terminus of *B. ovis* TatB (Fig. 1).

The Twin arginine system is essential for *Brucella*

To investigate the role of the *Brucella* Tat system in virulence, we tried several strategies to construct a *B. suis* *tat* mutant.

***tatABC* deletion.** We first attempted to create a mutant with an unmarked deletion of the whole region encoding the *tat* operon. The genomic flanks (approximately 500bp) immediately upstream and downstream of the *tat* operon were amplified using *B. suis* 1330 genomic DNA and cloned together in a SacB dependent suicide vector to give pIN365. Plasmid pIN365 was then electroporated into *B. suis* 1330 and Kanamycin-resistant (Kan^R) clones were selected; PCR analysis confirmed that the plasmid had integrated into the *tat* locus. A second homologous recombination to get the allelic replacement with excision of the *tat* operon and

integrated plasmid, was selected using sucrose sensitivity. We performed PCR on 200 sucrose resistant, kanamycin sensitive colonies and were unable to detect a colony where the *tatABC* operon had been deleted; all had reverted to wild type. This suggests that, for *B. suis*, the Tat system is essential.

Inframe deletion of *tatA*. Data from a Tn-seq screen performed on *B. abortus* [25] showed a very low number of transposon insertions in *tatABC* (Fig 2). Analysis of the Tnseq profile in the *tatABC* operon region shows that there are no insertions in the *tatC* region, however some insertions could be seen in the *tatA* region. Therefore, we reasoned that a deletion of *tatA* may be easier than deletion of the entire operon. Primers were designed to amplify upstream and downstream sequences which, when ligated together, replaced the ATG start codon of *tatA* with that of *tatB*. Here again we used a SacB dependent suicide vector to select a first integration but were again unable to identify a clone where the *tatA* gene had been deleted by the second recombination event (300 colonies tested).

Disruption of *tatA* with a chloramphenicol cassette and GFP marker. Due to the unsuccessful attempts in identifying an unmarked, inframe deletion mutant of the whole operon or the *tatA* gene, we decided to use a strategy that would allow us to positively select mutants by inserting two selectable markers, chloramphenicol resistance and GFP, into the *tatA* sequence. Here, attempts to isolate clones with even a single-crossover event were unsuccessful. No kanamycin resistant colonies were isolated after several attempts at electroporation.

Construction of conditional mutant in *tat* system. As a final strategy to generate a *tat* mutant, we attempted to construct a conditional mutant where *tatABC* expression was inducible. We used the anhydrotetracycline (ATC) inducible tetracycline resistance promoter from Tn10,

which has already been used with success in *Brucella*, [26] to control expression of the *tatABC* operon.

To determine the optimal ATC concentrations to induce expression of the *tatABC* genes from the *tetA* promoter, we used a plasmid carrying the *gfp* gene under control of the *tetA* promoter (pJC45). We established by flow cytometry (FACS) that the minimal concentration for induction was 0.2 μ M, GFP expression was maximal at 5 μ M, and there was a reduction of fluorescence at 10 μ M (data not shown). After electroporation with pIN371, colonies were grown on plates with different concentrations of ATC (0.2, 0.5, 1, 1.5, 2.0, 2.5, 5 and 10 μ M) and the appropriate antibiotics. From the many conditions tested, colonies resulting from the first crossover were only obtained when 0.2 μ M ATC was present in both the liquid medium used during the 4-hour recovery post electroporation and in the plates. The colonies obtained were smaller than usual. This suggests that the integration of the plasmid affects expression of the Tat system which has a negative effect on the bacterium. Again, attempts to isolate second crossover events, where the wild type promoter was replaced by the *tet* promoter were not successful and the first crossover colonies were lost after a few passages on agar.

Taken together, the results of this work provide evidence that the twin arginine transport system of *B. suis* is essential for viability under all the conditions that we tested.

Inhibitors of the *Pseudomonas aeruginosa* Tat system inhibit *Brucella* growth *in vitro*

As we could not genetically inactivate the Tat system, we tested two compounds previously reported to inhibit some bacterial Tat systems: N-Phenyl maleimide and Bay 11-7082. Both compounds have been proposed as potent Tat inhibitors and have been shown to inhibit the

secretion of Phospholipase C, a Tat dependent substrate, in *P. aeruginosa* [27]. We tested the effects of the two compounds on the growth *B. suis*, *B. abortus* and *B. melitensis*. In initial disc diffusion experiments with *B. suis* on plates, no growth inhibition was seen (not shown). However, when tested in liquid culture both compounds appeared to inhibit bacterial multiplication for all three *Brucella* strains. Similar effects were seen in shaking and non shaking conditions with both inhibitors. Bay 11-708 showed a stronger capacity to inhibit *Brucella* growth than N-Phenyl maleimide. We sought to test the effects of these compounds on *Brucella* in cell infection assays. However, we found that both were highly cytotoxic at concentrations below 50 μ M (not shown) meaning that they could not be used.

***In silico* prediction of Tat substrates in the *Brucella* proteome**

Proteins are targeted to the Tat machinery through specific N-terminal signal peptides that have a distinctive twin arginine motif. A BlastP search with the conserved motif (SRRXFLK) was used to identify potential Tat substrates in *B. suis* 1330 proteome and then analysed with three programs for Tat signal prediction: TatP, TATFIND and PRED-TAT. We considered that a protein contained a putative Tat signal if it was predicted by at least two of the programs: a total of 28 proteins were identified (Table 2 and Table S2).

Heterologous system to confirm predicted *Brucella* substrates

To confirm the Tat-dependence of our 28 putative substrates, we used a heterologous reporter assay in *E. coli*. This assay is based on the Tat dependent export of the AmiA amidase which allows the identification of Tat signal peptide. When fused to a Tat signal peptide, AmiA is exported into the periplasm which rescues the SDS sensitive phenotype of *E. coli* MC400 Δ *ssamiAC* that lacks periplasmic AmiA and AmiC activities. AmiA does not rescue SDS sensitivity

when fused to a Sec signal peptide or when expressed in a *tat* mutant [3]. DNA sequences encoding signal sequence-AmiA fusions were synthesised and cloned into pssAmiA-AmiAH commercially [3,23]. If a putative Tat substrate had more than one predicted cleavage site, all were tested; we thus tested 33 putative signal peptides. We found that 20 of the 33 putative signal sequences restored SDS resistance of the Δ *ssamiAC* but not of the Δ *tatC* strain (Fig. 4 and Fig S1). These data show that the *B. suis* genome encodes at least 20 *bona fide* Tat substrates.

Discussion

There is a high degree of conservation in genome organization between *tatA*, *tatB* and *tatC* genes across the *Brucella* genus and groups of highly related bacteria such as *Ochrobactrum* spp. and the well characterised *tatABC* operon of *E. coli*. While TatA and TatC are highly conserved (other than a two possible start sites for TatA), TatB shows the greatest degree of variability with deletions in a proline rich region and at the C-terminus. The NMR structure of the *E. coli* TatB protein suggests that this region is non structured [28]. These regions do not interact with TatC or the signal sequence of the transported substrate, but may interact with the substrates [29].

We attempted to create a *tat* mutant by deleting or interrupting the chromosomally encoded *tat* genes using several different strategies. None were successful, strongly suggesting that the Tat system is essential. The essentiality of the system is further suggested by Tn-seq analysis that was performed in *B. abortus* [25]. It could be possible that our attempts to disrupt the *tat* operon had also disrupted expression of *serS* which is also essential (Fig 2). However, the inhibitory effects of N-phenyl maleimide and Bay 11-7082, reported to inhibit Tat function in

P. aeruginosa [27] again suggest the essentiality of the Tat system. Unfortunately, these molecules were cytotoxic for both HeLa and J774 cells, which will limit their use as antimicrobial agents or for use as experimental Tat inhibitors in cell culture based infection models. Yan et al described the construction and characterisation of a *B. melitensis* mutant with a deletion of the *tatA* gene [22]. The reasons why construction of a *tat* mutant was possible in *B. melitensis*, while it appears essential in both *B. suis* and *B. abortus* and both inhibitors had an effect *B. melitensis* 16M are not clear. However, it may be possible that the *B. melitensis* strain used in that study has acquired unknown compensatory mutations that make inactivation of Tat possible (as recently reported for the central carbon metabolism in *B. suis* [30]). While many of the Tat substrates we identified are important to *Brucella* physiology, and some contribute to *Brucella* virulence, there are none that could explain the essentiality of the *B. suis* Tat system; however it is possible that this is due to a cumulative effect of loss of more than one Tat substrate.

Our bioinformatic screen identified 28 putative Tat substrates in *B. suis* 1330, two more than in the study by Nunez et al [24]. Using the amidase heterologous reporter screen we were able to confirm that 20 were true Tat substrates. Four of the remaining candidates were able to export AmiA in a *tat* mutant, indicating that the fusions are at least partially routed to the Sec pathway. There have been reports that some Tat and Sec signal sequences can show a degree of promiscuity [31] and that a small number of AmiA fusions can restore SDS resistance to a *tatC* mutant [32].

Yan *et al* described a similar bioinformatic screen in *B. melitensis* [22]. This study also tested translocation using the amidase reporter assay and constructed and analysed mutants in the

predicted Tat substrates, suggesting that 6 contribute to virulence. As expected, given the high degree of sequence identity between the two strains, there were many similarities, however there were some differences in the list of predicted Tat substrates and the results from the amidase reporter assay they presented were very different to those of our study. While some so the differences are due to annotation anomalies, many cannot be explained. A comprehensive comparison of the two data sets is shown in supplemental data (Table S3). Several of the identified proteins in our study, including a multicopper oxidase, the Rieske protein, MsrP, NosX, NosZ and NirK are well known Tat substrates in other organisms. Others, however, are not 'classical' Tat substrates; these include the two DsbA proteins, the L,D transpeptidases, the periplasmic binding proteins plus several proteins with unknown function. We identified homologues of all the confirmed substrates encoded by the genomes of closely related alpha proteobacteria (including *Ochrobactrum*, Rhizobiales and *Agrobacterium*) using BlastP and bioinformatically confirmed the presence of Tat signal sequences for all except the homologues of BR_RS10515 (data not shown). This suggests that the alphaproteobacteria have a repertoire of Tat substrates that differs from those in the enterobacteria and *Pseudomonas*. As seen with *P. aeruginosa* [3], a large number of the Tat substrates are predicted to contain co-factors (metal ions, iron-sulphur clusters..) and are predicted to be involved in electron transport, respiration and other oxidoreduction reactions. These include the Rieske Fe/S protein, an essential subunit of mitochondrial and bacterial cytochrome *bc1* complexes, NosX, NosZ, and NirK. Several of the Tat substrates we identified are involved in resistance to oxidative stress and survival at low oxygen concentrations (*Brucella* is generally classed as a strict aerobe, but can use alternative terminal electron acceptors to survive anaerobiosis), characteristics that have been associated with *Brucella* virulence [33,34], although they are not essential as *nosX* is a pseudogene in *B. ovis* [35].

Transport of a wide range of substances across bacterial envelopes, including the uptake of many nutrients, is performed by ABC transporters. *Brucella* has an exceptionally large number of predicted ABC transporters [36]. The uptake systems generally work with periplasmic binding proteins that concentrate the substrate in the periplasm and deliver it to the inner membrane transport components. We identified 7 Tat dependent periplasmic binding proteins. This seems to be common in the α -proteobacteria since 10, 14 and 23 Tat dependent periplasmic binding proteins were predicted for *Ochrobactrum anthropi*, *Agrobacterium tumefaciens* and *Sinorhizobium meliloti*, respectively [18,24,37].

Many of the Tat substrates are important for the formation and maintenance of the bacterial envelope. The L,D transpeptidases are involved in peptidoglycan remodeling and biosynthesis. The *Brucella* genome encodes over 80 predicted lipoproteins, which play an essential role in envelope integrity and, in some cases, bacterial virulence [38]. Two lipoproteins were identified as Tat substrates. It has been suggested that Tat dependent lipoproteins, often fast folding hydrolases and oxido-reductases, have evolved in extremophiles, environmental bacteria such as *Streptomyces coelicolor*, *L. pneumophila*, and *Haloferax volcanii* [39]. This fits with our observations that *Brucella* have evolved from soil bacteria by a process of genome reduction [40]. Formation of disulphide bridges in the periplasm by the Dsb system is essential for the correct folding of envelope proteins. We identified two DsbA proteins encoded by *B. suis* as Tat substrates. Transposon mutagenesis studies have shown that DsbA proteins are both required for full virulence [41]. While it is possible to mutate both genes individually, a double mutation has not been tested, and may be lethal. Their role in virulence may be due to reduced fitness or due to incorrect folding of virulence proteins, as reported for *Legionella pneumophila*, where a DsbA protein is required

for folding of Dot/Icm proteins [42]. Disulphide bond formation systems vary in prokaryotes probably reflecting specific requirements for survival in diverse ecological niches [43]. In *E. coli*, the DsbA signal sequence directs it to an unusual pathway depending on SecY, SecA and SRP, possibly because it folds rapidly in the cytoplasm [44,45]. Analysis of the genomes of other alpha proteobacteria closely related to *Brucella* suggests that their DsbA homologues are also Tat substrates (not shown), suggesting the DsbA proteins fold too rapidly in the cytoplasm to engage the SecY, SecA and SRP pathway.

All together our data show that the Tat system is essential for *B. suis* survival and the originality of its substrates might account for this essentiality. More work will be needed to understand why Tat is essential and if, as for most pathogens, it has a role in virulence.

Acknowledgements

We thank Xavier Debolle for extracting data from their RNAseq study and providing Figure 2 and Annette Vergunst for helpful discussions. Elia Riquelme was the recipient of a PhD fellowship from Conacyt Mexico. Sabina Omarova was financed by a PhD fellowship from the Ministry of Research and Education of the Republic of Azerbaijan

This work was supported by institutional funding from the Université de Montpellier, Université Aix-Marseille, INSERM, CNRS and Sante Publique France.

1. Palmer T, Berks BC. The twin-arginine translocation (Tat) protein export pathway. *Nat. Rev. Microbiol.* 2012.
2. Buck E De, Lammertyn E, Anné J. The importance of the twin-arginine translocation pathway for bacterial virulence. *Trends Microbiol.* 2008.
3. Gimenez MR, Chandra G, Overvelt P Van, Voulhoux R, Bleves S, Ize B. Genome wide identification and experimental validation of *Pseudomonas aeruginosa* Tat substrates. *Sci Rep.* **2018**; 8(1).
4. Ize B, Stanley NR, Buchanan G, Palmer T. Role of the *Escherichia coli* Tat pathway in outer membrane integrity. *Mol Microbiol.* **2003**; 48(5).
5. Ochsner UA, Snyder A, Vasil AI, Vasil ML. Effects of the twin-arginine translocase on secretion of virulence factors, stress response, and pathogenesis. *Proc Natl Acad Sci U S A.* **2002**; 99(12).
6. Cristóbal S, Gier JW De, Nielsen H, Heijne G Von. Competition between Sec- and TAT-dependent protein translocation in *Escherichia coli*. *EMBO J.* **1999**; 18(11).
7. Bagos PG, Nikolaou EP, Liakopoulos TD, Tsirigos KD. Combined prediction of Tat and Sec signal peptides with hidden Markov models. *Bioinformatics.* **2010**; 26(22).
8. Bendtsen JD, Nielsen H, Widdick D, Palmer T, Brunak S. Prediction of twin-arginine signal peptides. *BMC Bioinformatics.* **2005**; 6.
9. Dilks K, Rose RW, Hartmann E, Pohlschröder M. Prokaryotic utilization of the twin-arginine translocation pathway: A genomic survey. *J Bacteriol.* **2003**; 185(4).
10. Dilks K, Giménez MI, Pohlschröder M. Genetic and biochemical analysis of the twin-arginine translocation pathway in halophilic archaea. *J Bacteriol.* **2005**; 187(23).
11. Pickering BS, Oresnik IJ. The twin arginine transport system appears to be essential for

- viability in *Sinorhizobium meliloti*. *J Bacteriol.* **2010**; 192(19).
12. Saint-Joanis B, Demangel C, Jackson M, et al. Inactivation of Rv2525c, a substrate of the twin arginine translocation (Tat) system of *Mycobacterium tuberculosis*, increases β -lactam susceptibility and virulence. *J Bacteriol.* **2006**; 188(18).
 13. Wagley S, Hemsley C, Thomas R, et al. The twin arginine translocation system is essential for aerobic growth and full virulence of *Burkholderia thailandensis*. *J Bacteriol.* **2014**; 196(2).
 14. Kimura Y, Saiga H, Hamanaka H, Matoba H. *Myxococcus xanthus* twin-arginine translocation system is important for growth and development. *Arch Microbiol.* **2006**; 184(6).
 15. McDonough JA, Hacker KE, Flores AR, Pavelka MS, Braunstein M. The twin-arginine translocation pathway of *Mycobacterium smegmatis* is functional and required for the export of mycobacterial β -lactamases. *J Bacteriol.* **2005**; 187(22).
 16. Luo Q, Dong Y, Chen H, Gao H. Mislocalization of Rieske Protein PetA Predominantly Accounts for the Aerobic Growth Defect of *tat* Mutants in *Shewanella oneidensis*. *PLoS One.* **2013**; 8(4).
 17. Pradel N, Ye C, Livrelli V, Xu J, Joly B, Wu LF. Contribution of the twin arginine translocation system to the virulence of enterohemorrhagic *Escherichia coli* O157:H7. *Infect Immun.* **2003**; 71(9).
 18. Ding Z, Christie PJ. *Agrobacterium tumefaciens* twin-arginine-dependent translocation is important for virulence, flagellation, and chemotaxis but not type IV secretion. *J Bacteriol.* **2003**; 185(3).
 19. González ET, Brown DG, Swanson JK, Allen C. Using the *Ralstonia solanacearum* *tat* secretome to identify bacterial wilt virulence factors. *Appl Environ Microbiol.* **2007**;

73(12).

20. O'Callaghan D, Cazevieille C, Allardet-Servent A, et al. A homologue of the *Agrobacterium tumefaciens* VirB and *Bordetella pertussis* Ptl type IV secretion systems is essential for intracellular survival of *Brucella suis*. *Mol Microbiol.* **1999**; 33(6).
21. Celli J. The Intracellular Life Cycle of *Brucella* spp.. *Microbiol Spectr.* 2019 Mar;7(2):10.1128
22. Yan X, Hu S, Yang Y, et al. The Twin-Arginine Translocation System Is Important for Stress Resistance and Virulence of *Brucella melitensis* . *Infect Immun.* **2020**; 88(11).
23. Ball G, Antelmann H, Imbert PRC, Gimenez MR, Voulhoux R, Ize B. Contribution of the Twin Arginine Translocation system to the exoproteome of *Pseudomonas aeruginosa*. *Sci Rep.* **2016**; 6.
24. Nuñez PA, Soria M, Farber MD. The twin-arginine translocation pathway in α -proteobacteria is functionally preserved irrespective of genomic and regulatory divergence. *PLoS One.* **2012**; 7(3).
25. Sternon JF, Godessart P, Freitas RG de, et al. Transposon sequencing of *Brucella abortus* uncovers essential genes for growth in vitro and inside macrophages. *Infect Immun.* **2018**; 86(8).
26. Smith EP, Miller CN, Child R, Cundiff JA, Celli J. Postreplication roles of the *Brucella* VirB Type IV secretion system uncovered via conditional expression of the VirB11 ATPase. *MBio.* **2016**; 7(6).
27. Vasil ML, Tomaras AP, Pritchard AE. Identification and evaluation of twin-arginine translocase inhibitors. *Antimicrob Agents Chemother.* **2012**; 56(12).
28. Zhang Y, Wang L, Hu Y, Jin C. Solution structure of the TatB component of the twin-arginine translocation system. *Biochim Biophys Acta - Biomembr.* **2014**; 1838(7).

29. Ulfig A, Freudl R. The early mature part of bacterial twin-arginine translocation (Tat) precursor proteins contributes to TatBC receptor binding. *J Biol Chem.* **2018**; 293(19).
30. Machelart A, Willemart K, Zúñiga-Ripa A, et al. Convergent evolution of zoonotic *Brucella* species toward the selective use of the pentose phosphate pathway. *Proc Natl Acad Sci [Internet].* **2020**; 117(42):26374 LP – 26381.
31. Tullman-Ercek D, DeLisa MP, Kawarasaki Y, et al. Export pathway selectivity of *Escherichia coli* twin arginine translocation signal peptides. *J Biol Chem.* **2007**; 282(11).
32. Huang Q, Palmer T. Signal peptide hydrophobicity modulates interaction with the Twin-Arginine translocase. *MBio.* **2017**; 8(4).
33. Haine V, Dozot M, Dornand J, Letesson JJ, Bolle X De. NnrA is required for full virulence and regulates several *Brucella melitensis* denitrification genes. *J Bacteriol.* **2006**; 188(4).
34. Ronneau S, Moussa S, Barbier T, et al. *Brucella*, nitrogen and virulence. *Crit. Rev. Microbiol.* 2016.
35. Tsolis RM, Seshadri R, Santos RL, et al. Genome degradation in *Brucella ovis* corresponds with narrowing of its host range and tissue tropism. *PLoS One.* **2009**; 4(5).
36. Jenner DC, Dassa E, Whatmore AM, Atkins HS. ATP-binding cassette systems of *Brucella*. *Comp Funct Genomics.* **2009**; 2009.
37. Pickering BS, Yudistira H, Oresnik IJ. Characterization of the twin-arginine transport secretome in *Sinorhizobium meliloti* and evidence for host-dependent phenotypes. *Appl Environ Microbiol.* **2012**; 78(19):7141–7144.
38. Goolab S, Roth RL, Heerden H Van, Crampton MC. Analyzing the molecular mechanism

- of lipoprotein localization in *Brucella*. *Front. Microbiol.* 2015.
39. Shruthi H, Babu MM, Sankaran K. TAT-Pathway-dependent lipoproteins as a niche-based adaptation in prokaryotes. *J Mol Evol.* **2010**; 70(4).
 40. Wattam AR, Foster JT, Mane SP, et al. Comparative phylogenomics and evolution of the brucellae reveal a path to virulence. *J Bacteriol.* **2014**; 196(5).
 41. Köhler S, Foulongne V, Ouahrani-Bettache S, et al. The analysis of the intramacrophagic virulome of *Brucella suis* deciphers the environment encountered by the pathogen inside the macrophage host cell. *Proc Natl Acad Sci U S A.* **2002**; 99(24).
 42. Jameson-Lee M, Garduño RA, Hoffman PS. DsbA2 (27 kDa Com1-like protein) of *Legionella pneumophila* catalyses extracytoplasmic disulphide-bond formation in proteins including the Dot/Icm type IV secretion system. *Mol Microbiol.* **2011**; 80(3):835–852.
 43. Landeta C, Boyd D, Beckwith J. Disulfide bond formation in prokaryotes. *Nat Microbiol. England*; **2018**; 3(3):270–280.
 44. Schierle CF, Berkmen M, Huber D, Kumamoto C, Boyd D, Beckwith J. The DsbA Signal Sequence Directs Efficient, Cotranslational Export of Passenger Proteins to the *Escherichia coli* Periplasm via the Signal Recognition Particle Pathway. *J Bacteriol.* **2003**; 185(19):5706– 5713.
 45. Shimohata N, Akiyama Y, Ito K. Peculiar Properties of DsbA in Its Export across the *Escherichia coli* Cytoplasmic Membrane. *J Bacteriol.* **2005**; 187(12):3997-4004.
 46. Bogsch EG, Sargent F, Stanley NR, Berks BC, Robinson C, Palmer T. An essential component of a novel bacterial protein export system with homologues in plastids and mitochondria. *J Biol Chem. United States*; **1998**; 273(29):18003–18006.

47. Sprynski N, Felix C, O'Callaghan D, Vergunst AC. Restoring virulence to mutants lacking subunits of multiprotein machines: Functional complementation of a *Brucella* virB5 mutant. *FEBS Open Bio.* **2012**; .
48. Jack RL, Buchanan G, Dubini A, Hatzixanthis K, Palmer T, Sargent F. Coordinating assembly and export of complex bacterial proteins. *EMBO J.* **2004**; .

Table 1 Bacterial strains and Plasmids

Bacterial Strains	Description	Source/Reference
<i>Brucella suis</i> 1330		ATCC 23444 ^T
<i>Brucella abortus</i> 2308		Laboratory collection
<i>Brucella melitensis</i> 16M		ATCC 23456 ^T
<i>E. coli</i> DH5 α	Φ 80 <i>lacZ</i> Δ M15 Δ (<i>lacZYA-argF</i>) U169 <i>recA1 endA1 hsdR17</i> (rk ⁻ , mk ⁺) <i>phoA</i> <i>supE44 thi-1 gyrA96 relA1</i> λ ⁻	Invitrogen
<i>E. coli</i> MC4100	F- Δ <i>lacU169 araD139 rpsL150 relA1 ptsF</i> <i>rbs flbB5301</i>	Laboratory collection
<i>E. coli</i> MCDSSAC	MC4100 <i>amiA</i> Δ 2–33, <i>amiC</i> Δ 2–32	[4]
<i>E. coli</i> B1LKO	MC4100 Δ <i>tatC</i>	[46]
Plasmids		
pIN60	SacB dependent suicide vector. (KanR)	[47]
pIN11	SacB dependent suicide vector. (CmR)	[47]
pJC45	pBBR1 based, expresses GFP under control of plasmid tetR/tetA promoter. (KanR)	[26]
pIN310	pUC29 expressing eGFP and CmR	Laboratory strain

pIN365	pIN60 with upstream and downstream regions flanking the <i>tat</i> operon. To create a clean deletion of the operon.	This study
pIN367	pIN60 with sequences encoding eGFP and CmR between upstream and downstream regions flanking <i>tatA</i> . To create a GFP CmR marked <i>tatA</i> deletion.	This study
pIN371	pIN11 derivative carrying 400bp upstream of the <i>tatABC</i> operon, KmR, <i>tetR</i> repressor, <i>tatA</i> under control of the <i>tetA</i> promoter..To replace the <i>tat</i> operon promoter with an inducible promoter.	This study
pUNI-PROM	pT7.5-derived vector allowing constitutive expression under the control of the <i>E. coli tat</i> promoter or inducible expression from the upstream T7 promoter (ApR)	[48]
pssAmiA-AmiAH	ssAmiA fused to mature AmiA carrying a C-terminal hexa-histidine tag in pUNI-PROM (ApR)	[23]

Table 2 *B. suis* 1330 proteins predicted to be Tat substrates

		Tat dependent ²
<i>B. suis</i> locus	Annotation ¹	
BR_RS00235	L,D-transpeptidase	Yes
BR_RS01455	CAP domain-containing protein/alkaline phosphatase	Yes
BR_RS01605	ABC transporter substrate-binding protein	Yes
BR_RS01705	DsbA family protein	Yes
BR_RS02290	DsbA family protein	Yes
BR_RS03515	L,D-transpeptidase	Yes
BR_RS07125	Rieske Fe-S protein.	Yes
BR_RS10155	Molybdopterin-dependent oxidoreductase	Yes
BR_RS10515	ABC transporter periplasmic substrate-binding protein UF1007	Yes
BR_RS11255	NirK:Putative multicopper oxidases	Yes
BR_RS11325	NosZ : Nitrous-oxide reductase	Yes
BR_RS11350	NosX protein/FAD:protein FMN transferase	Yes
BR_RS12255	ABC transporter periplasmic substrate-binding protein	Yes
BR_RS13015	Amidohydrolase family protein	Yes
BR_RS13330	CueO : Multicopper oxidase	Yes
BR_RS13635	FrpC	Yes
BR_RS13715	ABC transporter periplasmic substrate-binding protein	Yes
BR_RS13835	ABC transporter periplasmic substrate-binding protein	Yes
BR_RS14675	MsrP : TMAO/DMSO reductase	Yes

BR_RS15485	XylF - ABC transporter periplasmic substrate-binding protein	NT ³
BR_RS15655	SsuA: ABC transporter substrate-binding protein	yes
BR_RS10115	ABC transporter periplasmic substrate binding protein	No
BR_RS11370	ABC transporter periplasmic Substrate binding protein	No
BR_RS14540	MetQ/NlpA family	No
BR_RS11250	Hypothetical protein	No
BR_RS11985	Bme12	No
BR_RS12600	Hypothetical protein	No
BR_RS02595	L,D-transpeptidase	No

¹ Full details of annotation, Tat dependent homologues in other bacteria, predicted signal peptidase cleavage sites and sequences cloned into pssAmiA-AmiAH are given in Supplemental Table S2

² Results of the amidase SDS resistance assay. See supplemental Table S2 and Figure S1 for full data sets

³ Not tested

Figure legends

Fig 1 TatB alignment

Alignment of *Brucella* TatB proteins with CLUSTALΩ

Fig 2 TnSeq analysis of the *B. abortus* *tat* region.

The red line represents sliding R200 values across the genome, the thin gray line represents the mean R200 per chromosome. Data from Sternon et al

Fig 3. N-Phenyl maleimide and Bay 11-7082 are inhibit *Brucella* replication.

Trypticase soy broth (1 mL) containing the inhibitors at the indicated concentrations was inoculated with *B. suis*, *B. abortus* and *B. melitensis* at an OD600 of 0.05. After 24h (shaking) or 48h (static) culture, the OD600 were measured. Data is expressed as % of the OD600 of a culture with no inhibitor. Data represents the mean \pm SD of three independent experiments. Statistical analysis was performed using a One-way ANOVA followed by the Sidak's test. Statistical differences are denoted with **** $P \leq 0.0001$; *** = $P \leq 0.001$; ** = $P \leq 0.01$; * = $P \leq 0.03$).

Fig 4. Analysis of predicted *Brucella* Tat signal sequences in the amidase reporter assay.

SDS viability assay of *E. coli* Δ *ssamiAC* mutant (MCDSSAC) strain carrying derivatives of pssAmiA-AmiAH where the AmiA signal sequence has been replaced by candidate *Brucella* Tat signal peptides identified *in silico*. Examples show positive negative (wrong cleavage site) and negative constructions. The full data set is shown in Fig S1.

Fig S1. Analysis of all predicted *Brucella* Tat signal sequences in the amidase reporter assay.

SDS viability assay of *E. coli* Δ *ssamiAC* mutant (MCDSSAC) strain carrying derivatives of pssAmiA-AmiAH where the AmiA signal sequence has been replaced by candidate *Brucella* Tat signal peptides identified *in silico*.

```

B._ovis          MCAQSARYQIMFDIAWSELLIIAIVMIVVVGPKDLPKMLRAF GKATARMRTTANEF RHQF
B._vulpis       -----MFDIAWSELLIIAIVMIVVVGPKDLPKMLRAF GKATARMRTTANEF RHQF
Brucella_sp._PacMan_Frog -----MFDIAWSELLIIAIVMIVVVGPKDLPKMLRAF GKATARMRTTANEF RHQF
B._melitensis_bv2 MCAQSARYQIMFDIAWSELLIIAIVMIVVVGPKDLPKMLRAF GKATARMRTTANEF RHQF
B._microti      MCAQSARYQIMFDIAWSELLIIAIVMIVVVGPKDLPKMLRAF GKATARMRTTANEF RHQF
B._neotomae     MCAQSARYQIMFDIAWSELLIIAIVMIVVVGPKDLPKMLRAF GKATARMRTTANEF RHQF
B._suis_bv5     MCAQSARYQIMFDIAWSELLIIAIVMIVVVGPKDLPKMLRAF GKATARMRTTANEF RHQF
B._abortus      MCAQSARYQIMFDIAWSELLIIAIVMIVVVGPKDLPKMLRAF GKATARMRTTANEF RHQF
B._melitensis_bv1 -----MFDIAWSELLIIAIVMIVVVGPKDLPKMLRAF GKATARMRTTANEF RHQF
B._suis_bv1     MCAQSARYQIMFDIAWSELLIIAIVMIVVVGPKDLPKMLRAF GKATARMRTTANEF RHQF
B._pinnipedialis MCAQSARYQIMFDIAWSELLIIAIVMIVVVGPKDLPKMLRAF GKATARMRTTANEF RHQF
B._ceti         MCAQSARYQIMFDIAWSELLIIAIVMIVVVGPKDLPKMLRAF GKATARMRTTANEF RHQF
                *****

B._ovis          NEALKEAELEDVKTIIDEARSLDPRTRLTQVDFPIRSAGEDLRSGLSATSMSFPVTENKV
B._vulpis       NEALKEAELEDVKTIIDEARSLDPRTRLTQVDFPIRSAGEDLRSGLSATSMSFPVTENKV
Brucella_sp._PacMan_Frog NEALKEAELEDVKTIIDEARSLDPRTRLTQVDFPIRSAGEDLRSGLSATSMSFPVTENKV
B._melitensis_bv2 NEALKEAELEDVKTIIDEARSLDPRTRLTQVDFPIRSAGEDLRSGLSATSMSFPVTENKV
B._microti      NEALKEAELEDVKTIIDEARSLDPRTRLTQVDFPIRSAGEDLRSGLSATSMSFPVTENKV
B._neotomae     NEALKEAELEDVKTIIDEARSLDPRTRLTQVDFPIRSAGEDLRSGLSATSMSFPVTENKV
B._suis_bv5     NEALKEAELEDVKTIIDEARSLDPRTRLTQVDFPIRSAGEDLRSGLSATSMSFPVTENKV
B._abortus      NEALKEAELEDVKTIIDEARSLDPRTRLTQVDFPIRSAGEDLRSGLSATSMSFPVTENKV
B._melitensis_bv1 NEALKEAELEDVKTIIDEARSLDPRTRLTQVDFPIRSAGEDLRSGLSATSMSFPVTENKV
B._suis_bv1     NEALKEAELEDVKTIIDEARSLDPRTRLTQVDFPIRSAGEDLRSGLSATSMSFPVTENKV
B._pinnipedialis NEALKEAELEDVKTIIDEARSLDPRTRLTQVDFPIRSAGEDLRSGLSATSMSFPVTENKV
B._ceti         NEALKEAELEDVKTIIDEARSLDPRTRLTQVDFPIRSAGEDLRSGLSATSMSFPVTENKV
                ***** : *****

B._ovis          GEVITPVEPGGTPVP-----VPMITAPEEPAKPRKTSRPAAKAGLKPITTTKTAKKNRSY
B._vulpis       GEVITPVEPDGTPVPA-----PEEPVKPRKTSRPAAKAGPKPTTAKTAAKKTGA
Brucella_sp._PacMan_Frog GEVITPVEPDGTPVPA-----PTISAPEEPAKRRKTSRPAAKAGPKPTTAKAAAKKTGA
B._melitensis_bv2 GEVITPVEPGGTPV-----VPMITAPEEPAKPRKTSRPAAKAGPKPTTTKT-AKKTGA
B._microti      GEVITPVGPGGTPVPAPPVPMITAPEEPAKPRKTSRPAAKAGPKPTTTKT-AKKTGA
B._neotomae     GEVITPVEPGGTPVPAPPVPMITAPEEPAKPRKTSRPAAKAGPKPTTTKT-AKKTGA
B._suis_bv5     GEVITPVEPGGTPVPAPPVPMITAPEEPAKPRKTSRPAAKAGPKPTTTKT-AKKTGA
B._abortus      GEVITPIEPGGTPVPAPPVPMITAPEEPAKPRKTSRPAAKAGPKPTTTKT-AKKTGA
B._melitensis_bv1 GEVITPVEPGGTPVPAPPVPMITAPEEPAKPRKTSRPAAKAGPKPTTTKT-AKKTGA
B._suis_bv1     GEVITPVEPGGTPVPAPPVPMITAPEEPAKPRKTSRPAAKAGPKPTTTKT-AKKTGA
B._pinnipedialis GEVITPVEPGGTPVPAPPVPMITAPEEPAKPRKTSRPAAKAGPKPTTTKT-AKKTGA
B._ceti         GEVITPVEPGGTPVPAPPVPMITAPEEPAKPRKTSRPAAKAGPKPTTTKT-AKKTGA
                ****:* : *.* **** * * * * * * * * * * * * * * * * * * * * * * * * * * * *

B._ovis          PQ-ADGRQ-----DRNAG---
B._vulpis       TPKPMADKTATPVKTTTKKTGTGA
Brucella_sp._PacMan_Frog TPKPMADKTATPVKTTTKKTGTGA
B._melitensis_bv2 TPKPTADKTATPVKTTTKKTGTGA
B._microti      TPKPTADKTATPVKTTTKKTGTGA
B._neotomae     TSKPTADKTATPVKTTTKKTGTGA
B._suis_bv5     TPKPTADKTATPVKTTTKKAGTGA
B._abortus      TPKPTADKTATPVKTTTKKTGTGA
B._melitensis_bv1 TPKPTADKTATPVKTTTKKTGTGA
B._suis_bv1     TPKPTADKTATPVKTTTKKTGTGA
B._pinnipedialis TPKPTADKTATPVKTTTKKTGTGA
B._ceti         TPKPTADKTATPVKTTTKKTGTGA
                . : : : *

```

Fig 1 TatB alignment

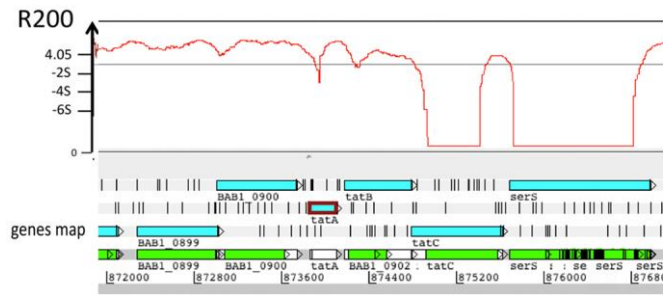


Fig 2 TnSeq analysis of the *B. abortus* *tat* region.

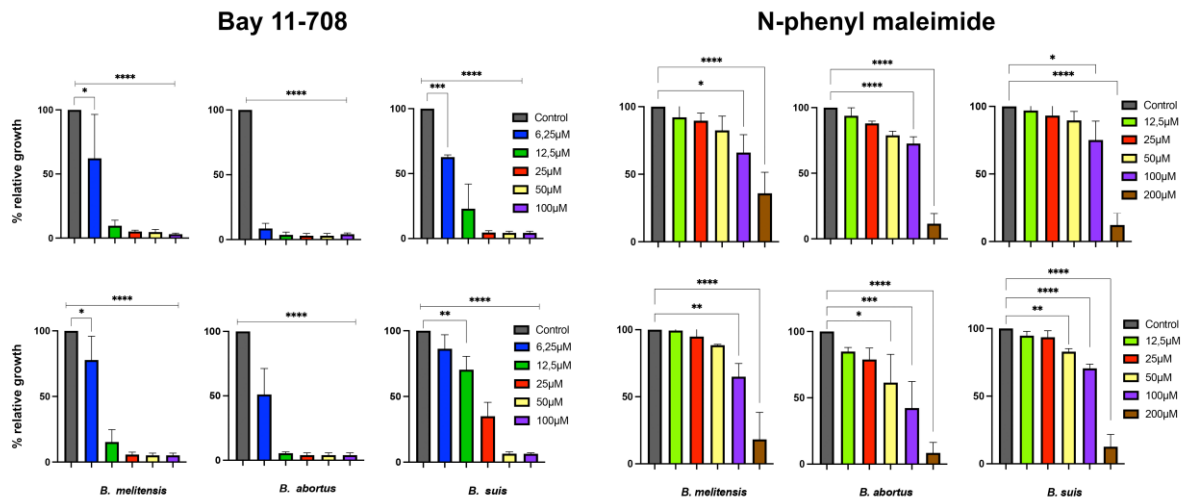


Fig 3. N-Phenyl maleimide and Bay 11-7082 are inhibit *Brucella* replication.

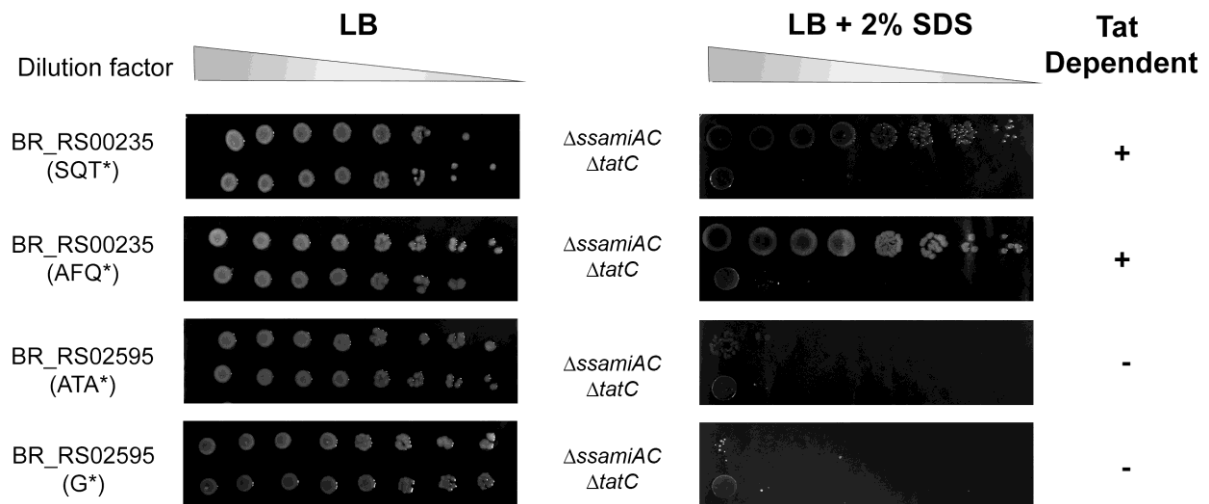


Fig 4. Analysis of predicted *Brucella* Tat signal sequences in the amidase reporter assay.