



**HAL**  
open science

## The Beetles (Coleoptera) of Príncipe, São Tomé and Annobón

Gabriel Nève, Patrick Bonneau, Alain Coache, Artur Serrano, Gérard Filippi

► **To cite this version:**

Gabriel Nève, Patrick Bonneau, Alain Coache, Artur Serrano, Gérard Filippi. The Beetles (Coleoptera) of Príncipe, São Tomé and Annobón. Ceríaco LMP; de Lima RF; Melo M; Bell RC. Biodiversity of the Gulf of Guinea Oceanic Islands, Springer International Publishing, pp.295-348, 2022, 9783031061523. 10.1007/978-3-031-06153-0\_12. hal-04057665

**HAL Id: hal-04057665**

**<https://amu.hal.science/hal-04057665v1>**

Submitted on 5 Apr 2024

**HAL** is a multi-disciplinary open access archive for the deposit and dissemination of scientific research documents, whether they are published or not. The documents may come from teaching and research institutions in France or abroad, or from public or private research centers.

L'archive ouverte pluridisciplinaire **HAL**, est destinée au dépôt et à la diffusion de documents scientifiques de niveau recherche, publiés ou non, émanant des établissements d'enseignement et de recherche français ou étrangers, des laboratoires publics ou privés.



Distributed under a Creative Commons Attribution 4.0 International License

# Chapter 12

## The Beetles (Coleoptera) of Príncipe, São Tomé and Annobón



Gabriel Nève, Patrick Bonneau, Alain Coache, Artur Serrano,  
and Gérard Filippi

**Abstract** The known beetle fauna of Príncipe, São Tomé, and Annobón amounts to 403 species and subspecies, of which 190 (47%) are endemic. The most diverse families of beetles are the Cerambycidae (61 species), the Tenebrionidae (57 species), the Carabidae (45 species), the Scarabaeidae (34 species), and the Coccinellidae (31 species). Most records come from São Tomé, with 297 species. In comparison, Príncipe, with 151 recorded species, and especially Annobón, with 16 recorded species, still require extensive faunistic investigations. The families Staphylinidae and Curculionidae probably hold numerous undescribed species and should be the focus of future research. Most of the endemic species live in forests. Therefore, the continued conservation of large forest areas on the islands is key to the long-term survival of their unique beetle fauna. As elsewhere, the beetle fauna will likely suffer from the effects of climatic change, and high-altitude species are likely to be the most severely affected.

**Keywords** Biodiversity · Checklist · Coleoptera · Conservation · Endemism · Gulf of Guinea

---

G. Nève (✉)

Aix Marseille Université, Avignon Université, CNRS, IRD, IMBE, Marseille, France  
e-mail: [gabriel.neve@imbe.fr](mailto:gabriel.neve@imbe.fr)

P. Bonneau

OPIE, Office Pour les Insectes et leur Environnement de Provence-Alpes-du-Sud, Muséum d'Histoire Naturelle de Marseille, Marseille, France

A. Coache

Impasse de l'Artémise, La Brillanne, France

A. Serrano

cE3c, Centre for Ecology, Evolution and Environmental Changes, Faculdade de Ciências, Universidade de Lisboa, Lisbon, Portugal

Departamento de Biologia Animal, Faculdade de Ciências, Universidade de Lisboa, Lisbon, Portugal

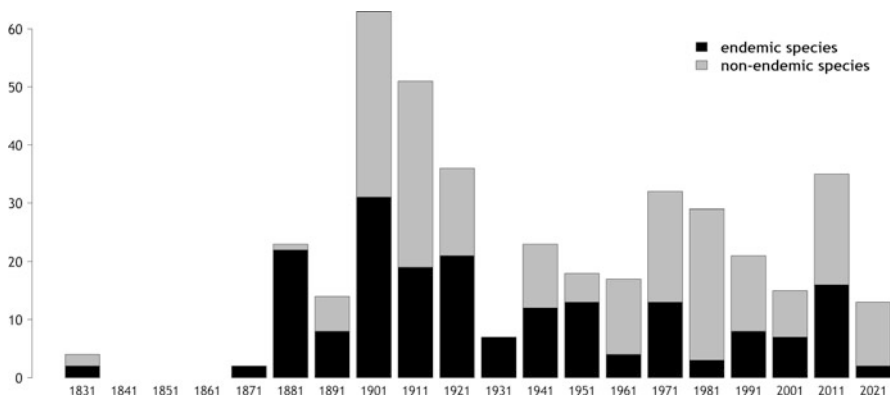
G. Filippi

MICROLAND, Maison de la vie associative, Aix-en-Provence, France

## Introduction

The islands of Príncipe, São Tomé, and Annobón, in the equatorial Atlantic ocean, have a volcanic origin and have never been connected to the African continent (Fitton and Dunlop 1985). Their isolation led to the evolution of numerous endemic species, but also to a fauna that is less diverse than that of continental Africa, lacking many continental species that were unable to cross the stretch of Atlantic ocean isolating the islands. Before human colonization, which started in the late fifteenth century, the islands were almost entirely covered by forests (Jones et al. 1991).

Entomological research in the islands started in the beginning of the nineteenth century, with the first descriptions of endemic species by Hope (1833) and Klug (1835). The fauna was subsequently investigated by entomologists from various European countries who later published their findings in journals from their respective countries, making it difficult to produce a synthesis. The main additions to the knowledge of the local beetle fauna came in waves (Fig. 12.1). Karsch (1881) mentioned 53 species, including 21 he described as new to science. The Italian explorer and zoologist Leonardo Fea (1852–1903) collected extensively on São Tomé and Príncipe in 1900–1901, and 12 beetle species from the archipelago still bear his name, such as *Pseudammus feae* (Fig. 12.2.3). The French entomologist Léon Fairmaire (1820–1906) published revisions of the fauna of São Tomé (1891, 1892, 1902). The Portuguese botanist Júlio Augusto Henriques (1838–1928) published an important geographical description of São Tomé (1917) that included a list of all species then known to the island, unfortunately mentioning several species based on dubious identification or with erroneous names. Later publications were usually focused on a single family, such as Tenebrionidae (Gebien 1921, 1942) and Coccinellidae (Fürsch 1974). Castel-Branco (1963) studied the insects feeding



**Fig. 12.1** Number of named beetle species added per decade to the fauna of Príncipe, São Tomé, and Annobón



**Fig. 12.2** Photos of charismatic beetle fauna from the oceanic islands of the Gulf of Guinea. Cerambycidae: (1–2) *Macrotoma hayesii*; (3) *Pseudammus feae*; (4) *Acutandra delahayi*; (5) *Sternotomis ducalis*; (6) *Sternotomis rufozonata*. Brentidae: (7) *Cerobates sennae*. Mordellidae: (8) *Ophthalmoglipa horaki*. Dynastinae: (9) *Rhizoplatys cedrici* (insert: genitalia). Photo credits: (1, 3–5, 7–9) Patrick Bonneau, (2) Gabriel Nève, (6) Artur Serrano

on *Theobroma cacao*, and listed a series of predators, including several ladybirds (Coccinellidae).

Several expeditions to the islands were completed in the 1900s. Sousa da Camara visited São Tomé in 1920 (Seabra 1922); Fernando Frade (*Missão Científica a São Tomé*) visited São Tomé in November and December 1954 (Gomes Alves 1956); Pierre Viette, from the *Muséum National d'Histoire Naturelle* (Paris) visited the three islands in June and July 1956 (Viette 1956); and Guy Schmitz from the Royal Museum of Central Africa (Tervuren, Belgium) visited São Tomé in October and November 1973 (Basilevsky 1975). A zoological mission by entomologists and ornithologists from the *Faculdade de Ciências* and *Museu Nacional de História Natural* (Lisboa) took place in São Tomé and Príncipe in June and July 1984 (Mendes et al. 1988; Rocha Pité 1993; Serrano 1995; Zuzarte and Serrano 1996a). Charles E. Griswold and Joel M. Ledford from the California Academy of Sciences visited São Tomé and Príncipe in 2001 (Kavanaugh 2005), Clive R. Turner and Tōnis Tasane from the African Natural History Research Trust (Herefordshire, England) and the Natural History Museum (London) visited São Tomé in 2016 (Darby 2020). Several other entomologists visited the islands since 1980, and published descriptions of their findings, notably Jean-Guy Canu from Príncipe between 1989 and 1991 (Allard 1990; Antoine 1992) and Norbert Delahaye between 2013 and 2016 (Delahaye and Camiade 2016). The French NGO Microland also visited São Tomé in February and October 2019, the latter expedition including a week on Príncipe, and whose results on Coleoptera are published here for the first time.

The local *Brigada de Fomento Agro-Pecuário*, and later the *Centro de Investigação Agronómica e Tecnológica de São Tomé e Príncipe* (CIAT-STP) commissioned numerous entomological studies, mostly related to agriculture (Fürsch 1974). CIAT-STP holds a collection of insects mainly obtained between the 1950s and 1975, when the former Portuguese colony gained independence. Otherwise, specimens from São Tomé and Príncipe are now deposited in several European and American institutions, as well as in numerous private collections.

The aim of this chapter is to compile a list of all Coleoptera species known from the islands of Príncipe, São Tomé, and Annobón. For this, we relied on indexes of entomological publications, and, for Cerambycidae, on the TITAN database (Tavakilian and Chevillotte 2020). Drawing from published material and our experience on the islands, we analyze this list highlighting the distinctiveness of the beetle fauna, possible threats, and main gaps in knowledge. Coleoptera families followed recent publications (Bouchard et al. 2011; López-López and Vogler 2017), and species nomenclature followed recent revisions (Appendix). Nomenclature for Carabidae follows Lorenz (2005).

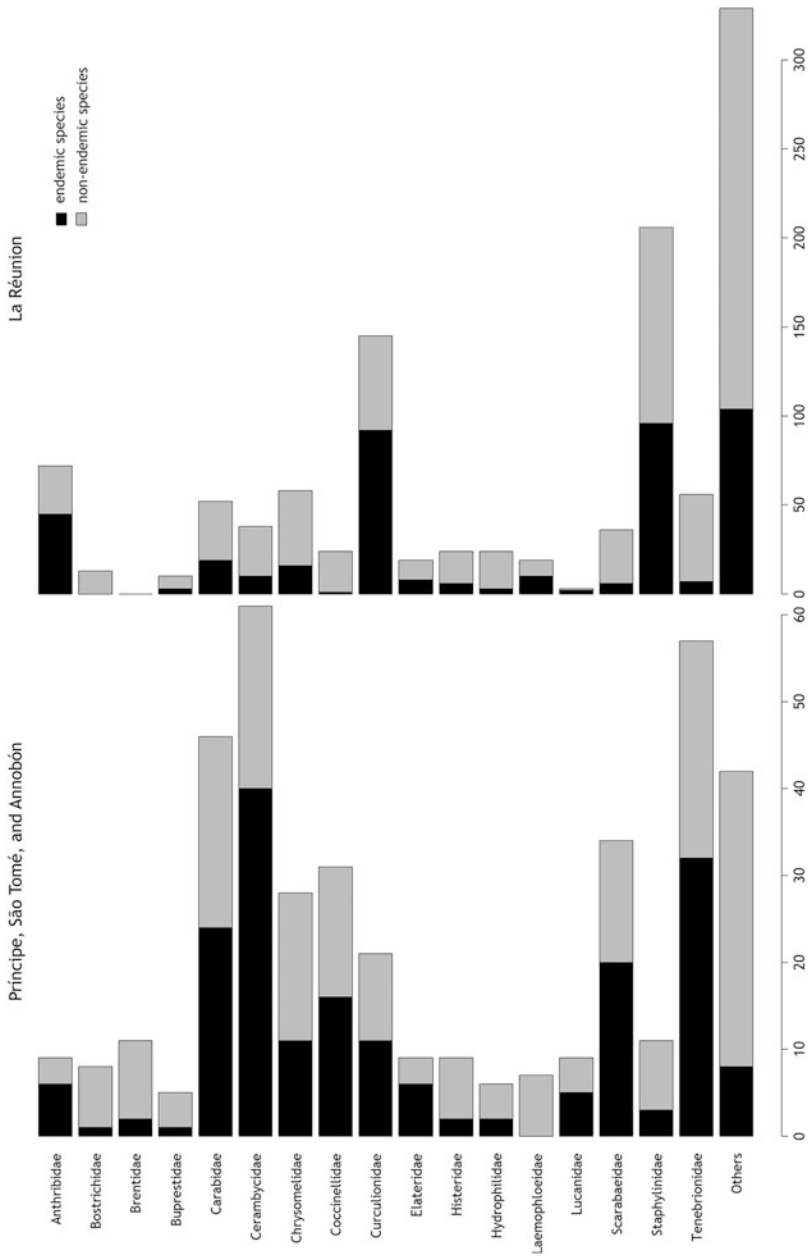
## Diversity of the Beetle Fauna

The fauna that we find today in the archipelago is the result of successive colonization and extinction events throughout geological time. Colonization can be active, in which flight has a dominant role, or passive, such as on floating rafts, or carried by other animals or by air currents. Extinction can be derived from natural physical mechanisms, such as catastrophic volcanism, or by ecological processes, such as predation and competition between species, and in more recent history by anthropogenic actions, such as the destruction of habitats. In the last 500 years, since the Portuguese first arrived on these islands, we cannot neglect the accidental introduction of exotic species through human activity, namely on the ballast of boats, through the introduction of plant species of agricultural interest, or on imported goods.

The beetle fauna of Príncipe, São Tomé, and Annobón currently includes 403 species and subspecies (Appendix), which is certainly an underestimate of the richness of the local fauna. A total of 297 species are known from São Tomé, while only half of this number (151) has been listed for Príncipe, which most likely remains understudied. For example, 20 species of Curculionidae are known from São Tomé, but only 1 from Príncipe and 1 from Annobón. Only 16 Coleoptera species have been reported for the latter island, which is clearly in need of further investigations.

The most diverse families of beetles on Príncipe, São Tomé, and Annobón are the Cerambycidae (61 species), the Tenebrionidae (57 species), the Carabidae (45 species), the Scarabaeidae (34 species), and the Coccinellidae (31 species) (Fig. 12.3). The Cerambycidae, Carabidae, and Scarabaeidae have been actively studied by numerous collectors over several decades and there are recent syntheses by Serrano (1995, 2008, 2010), and Zuzarte and Serrano (1996b), while the Tenebrionidae have been the subject of an in-depth study by Gebien (1921, 1942), and the Coccinellidae by Fürsch (1974). The high number of Coccinellidae, 31 species, 8% of the known beetles on the islands, is probably the result of two factors: (1) the family has been the subject of a systematic study on the archipelago, and (2) their flight ability facilitates colonization from continental Africa, compared to other beetle families (half of the species known on the islands also occur on the African mainland).

The Staphylinidae has only 11 species recorded on the islands, accounting to less than 3% of their known beetle fauna, but are likely more diverse than the current estimates. For instance, Réunion, a partly forested equatorial island in the Indian ocean, has 206 species listed, which amounts to one-fifth of the local beetle fauna, about half of which are endemic (Gomy et al. 2016; Fig. 12.3). Two species of Dytiscidae are known from São Tomé, which is most certainly an underestimate since this family has not been the subject of a specialized study. Again, for comparison, this group is represented by 19 species on Réunion Island. Since Gebien (1921, 1942) listed 46 species of Tenebrionidae, only seven were added by Ardoin (1958, 1962) and Robiche (2000), plus two linked with imported goods (Luna de Carvalho 1984) and one newly found on São Tomé in 2019 (Laurent Soldati, pers. comm.).



**Fig. 12.3** Left: Distribution of known species of beetles from São Tomé, Príncipe, and Annobón, with the proportion in each family; families with less than six species are grouped as “Others.” Right: distribution of species known on Réunion Island among the same families (Gomy et al. 2016). Note the differences in scale between the two graphs

## Distinctiveness of the Beetle Fauna

Out of 403 species recorded, 190 (47%) are known only from these islands and are therefore considered endemic (Table 12.1). The Cerambycidae has 40 endemic species, the highest number of all beetle families, followed by the Tenebrionidae (32) and the Carabidae (24).

Lycidae (2 species) is the only family that is fully composed of endemic species on the islands. The families that have the highest numbers of endemic species, Tenebrionidae and Cerambycidae, occur mainly in forests (Barclay 2006; Rejzek 2006), which remain abundant on the islands.

The endemism of several species has been recognized in their names; 16 species bear the adjective *thomensis*, *saotomense* or one of their derivatives, 7 bear the adjective *principis*, *principensis* or *principiensis*, and 3 bear the adjective *annobonae*. The genus *Saotomia* was given to an endemic species of weevil (Curculionidae), and the adjective *amadori* was recently given to a ground beetle (Carabidae) to honor Rei Amador, a hero in São Tomé history.

## Knowledge Gaps

The assignment of species to a particular island is sometimes problematic. For example, Karsch (1882) described *Apogonia insulana* based on a specimen collected by Erdmann in Príncipe. Kolbe (1899) doubted the locality and suggested it came from the coast of Guinea. This uncertainty could only be solved when the species was rediscovered on Príncipe in 2019 (Patrick Bonneau and Marc Lacroix, unpublished; Fig. 12.4.1). In addition, some species mentioned in old references were likely based on misidentifications (Table 12.2). The compilation of all Coleoptera species listed for the islands by various authors over two centuries also led to numerous synonymies, some of which remain unresolved, as no systematic revision has been done. This is the case of *Grammopyga marginicollis*, described as endemic for São Tomé, but which may be a synonym of *G. cincticollis*, mentioned for Príncipe and widely distributed in Africa. Biphilidae, Limnichidae, and Ptilodactylidae are known to occur on the islands but the material has not yet been identified at the species level (Appendix). Other poorly known families are also likely present, such as Scydmaenidae.

In total, 37 families of beetles are known from Príncipe, São Tomé, and Annobón whereas 70 are known from Réunion Island, which is larger (2511 km<sup>2</sup>) but also far more distant from continents (Gomy et al. 2016). The known beetle fauna of Réunion Island holds 1128 species, of which 428 (38%) are endemic (Gomy et al. 2016). Thus, there seems to be a gap in the knowledge of the Gulf of Guinea beetle families that are studied by few entomologists. Focused research by specialist entomologists, training local scientists, and conducting comprehensive surveys with multiple trapping methods will be necessary to close this gap. For instance,



**Table 12.1** Number of known named Coleoptera species in each family for the islands of Príncipe, São Tomé, and Annobón (All: All species; END: Endemics)

Family	Príncipe		São Tomé		Annobón		Total	
	All	END	ALL	END	All	END	All	END
Anthribidae	7	5	7	5	0	0	9	6
Biphylidae	0	0	?	?	0	0	?	?
Bostrichidae	4	1	5	0	2	0	8	1
Brentidae	10	1	7	2	0	0	11	2
Buprestidae	2	1	4	0	0	0	5	1
Carabidae	19	10	32	14	0	0	45	24
Cerambycidae	18	9	45	27	7	5	61	40
Chrysomelidae	19	8	16	7	0	0	28	11
Cicindelidae	2	0	2	0	0	0	3	0
Ciidae	0	0	1	0	0	0	1	0
Cleridae	0	0	1	0	0	0	1	0
Coccinellidae	6	2	27	14	0	0	31	16
Curculionidae	1	0	20	10	1	1	21	11
Dryophthoridae	0	0	4	0	0	0	4	0
Dytiscidae	2	0	1	0	0	0	2	0
Elateridae	2	1	8	6	0	0	9	6
Endomychidae	0	0	1	0	0	0	1	0
Gyrinidae	0	0	1	0	0	0	1	0
Histeridae	6	2	8	1	0	0	9	2
Hybosoridae	0	0	1	0	0	0	1	0
Hydrophilidae	3	1	3	1	1	0	6	2
Laemophloeidae	0	0	7	0	0	0	7	0
Limnichidae	0	0	?	?	0	0	?	?
Lucanidae	5	2	4	2	1	1	9	5
Lycidae	1	1	1	1	0	0	2	2
Lymexylidae	0	0	1	0	0	0	1	0
Mordellidae	1	1	2	1	0	0	3	2
Mycteridae	0	0	1	0	0	0	1	0
Nitidulidae	0	0	3	0	0	0	3	0
Oedemeridae	0	0	3	2	0	0	3	2
Passalidae	1	1	2	1	0	0	2	1
Ptiliidae	0	0	2	0	0	0	2	0
Ptilodactylidae	0	0	?	?	0	0	?	?
Ptinidae	0	0	2	0	0	0	2	0
Scarabaeidae	16	8	20	12	0	0	34	20
Silvanidae	0	0	3	0	0	0	3	0
Staphylinidae	0	0	11	3	0	0	11	3
Tenebrionidae	24	11	37	21	4	2	57	32
Trogossitidae	0	0	3	1	0	0	3	1
Zopheridae	2	0	1	0	0	0	3	0
<b>TOTAL</b>	<b>151</b>	<b>65</b>	<b>297</b>	<b>131</b>	<b>16</b>	<b>9</b>	<b>403</b>	<b>190</b>

Doubtful species and genera with unnamed species (Chrysomelidae: *Longitarsus* sp. and *Manioba* sp. and Curculionidae: *Sternuchopsis* sp.) are not listed. Families with unnamed species are indicated by ‘?’

Table 12.2 List of species mentioned in old references that were most likely mistakenly reported for the islands

Family	Subfamily	Species	Synonyms	References	Comment	Revision reference
Carabidae	Brachininae	<i>Pheropsophus angolensis</i> (Erichson, 1843)		Henriques, 1917	Probable confusion with <i>Pheropsophus amadori</i>	Present revision
Carabidae	Harpalinae	<i>Selenophorus atratus</i> Klug, 1862	<i>Progonochaetus caffer</i> (Boheman, 1848)	Henriques 1917	Unconfirmed record	Present revision
Carabidae	Lebiinae	<i>Pentagonica conradti</i> Kolbe, 1898		Straneo, 1945	Straneo's specimen could not be assigned unambiguously to this species	Serrano, 1995
Cerambycidae	Cerambycinae	<i>Philematium festivum</i> (Fabricius, 1775)		Henriques, 1917	Probable confusion with <i>Philematium greeffi</i>	Present revision
Cerambycidae	Lamiinae	<i>Ceroplesis bincta</i> (Fabricius, 1798)		Henriques, 1917	Unconfirmed record	Present revision
Cerambycidae	Parandrinae	<i>Acutandra gabonica</i> (Thompson, 1858)	<i>Parandra gabonica</i> Thompson, 1857	Hintz, 1919; Villiers, 1957	Probable confusion with other <i>Acutandra</i> species	Bouyer et al. (2012)
Cicindelidae	Cicindelinae	<i>Habrodera nidula</i> (Dejean, 1825)		Henriques, 1917	Unconfirmed record	Present revision
Coccinellidae	Coccinellinae	<i>Cheilomenes lunata</i> (Fabricius, 1775)		Henriques 1917; Seabra 1922; Castel-Branco 1963	Probable confusion with <i>C. sulphurea</i>	Fürsch, 1974
Dytiscidae	Dytiscinae	<i>Hydaticus capricula</i> Anlar.		Henriques, 1917	No other reference to this name found. <i>Nomen nudum</i> .	Nilsson & Hájek, 2018
Lymexylidae	Atractocerinae	<i>Atractocerus brasiliensis</i> Lepeletier de Saint Fargeau & Audinet-Serville, 1825		Seabra, 1922	Probable confusion with <i>Atractocerus brevicornis</i>	Present revision
Scarabaeidae	Dynastinae	<i>Oryctes obuncus</i> Karsch		Henriques, 1917	No other reference to this name found. <i>Nomen nudum</i> .	Endrödi, 1985

(continued)

Table 12.2 (continued)

Family	Subfamily	Species	Synonyms	References	Comment	Revision reference
Scarabaeidae	Dynastinae	<i>Temnorhynchus coronatus</i> diana (Palisot de Beauvois, 1805)	<i>Temnorhynchus diana</i>	Henriques, 1917	Probable confusion with <i>T. tridentatus</i>	Present revision
Tenebrionidae	Tenebrioninae	<i>Gonocephalum aequale</i> (Erichson, 1843)	<i>Opatrum aequale</i>	Henriques, 1917	Dubious record	Iwan et al., 2010
Tenebrionidae	Tenebrioninae	<i>Gonocephalum granicolle</i> Gebien, 1920		Gebien, 1942	Dubious record	Iwan et al., 2010

we are currently working on the description of new species of Curculionidae from São Tomé, and a revision of this family on the islands will probably yield several new species. The Hydrophilidae, quite common in forest pools probably include more than the six currently recognized species, and a revision of these would likely reveal local endemism, as has been shown recently in the Neotropics (Smith and Short 2020).

## Soil Coleoptera

The soil fauna includes both endogean and epigeal Coleoptera. The former spend all or most of their life cycle within the soil, are not very conspicuous and in most cases are poorly or almost entirely unknown due to their small size (mainly <2 mm) and secretive way of life. Epigeal beetles live on the ground, and are active mainly by night or at twilight, while during the day they rest or hide in the litter, under rocks and logs, sometimes burying themselves in the soil. The endogean beetles of Príncipe, São Tomé, and Annobón, are completely unknown to science, hence the absence of records of Scydmaenidae and Pselaphiinae. We do not know of any research directed to their collection and study on the islands.

Most epigeal beetles are predators such as Cicindelidae (e.g., *Myriochila melancholica*), some ground Carabidae (e.g., *Notiobia sanctithomae* and *Scarites fatuus*) and Staphylinidae. Many epigeal beetles are saprophagous, such as Tenebrionidae, or leaf litter dwellers (e.g., Curculionidae: *Titilayo* spp.). On the other hand, the dung beetle fauna of the islands includes only four Onthophagini species despite being extremely biodiverse in the continent. Other groups that have not yet been reported from the islands include carrion (Silphidae), hide (Dermestidae), and skin (Trogidae) beetles, as well as some families that have representatives that typically occur on the ground (e.g., Cucujidae, Cryptophagidae, Latridiidae, Mycetophagidae, etc.). Considering that this fauna is closely associated with substrate, vegetation cover, and abiotic factors, such as humidity and temperature, we foresee that this group contains an enormous component of undocumented diversity in these islands.

## Epiphytic Coleoptera

The aerial parts of plants constitute an enormous spatial matrix, varying through time in their different components (stems, leaves, inflorescences, and fruits). A high percentage of the known beetles, both larval and adult, are phytophagous in the broad sense of the term. Since São Tomé and Príncipe maintain almost 30% of the original forest cover (Jones et al. 1991), it is not surprising that they host a rich and diverse fauna of Coleoptera associated with the vegetation, including the

subterranean and the aerial parts of plants. Most Chrysomelidae and Curculionidae species are phytophagous, sometimes having numerous species within a genus, probably linked to different host species, as in the case of the six species of *Aspidomorpha* (Curculionidae) recently recorded on Príncipe (Coache and Rainon 2020). Nitidulidae (*Carpophilus* spp.) and Bruchinae species are found in abundance on flowers and mainly on fruits. Plant saps attract a multiplicity of species belonging to different families, such as adults of Lucanidae (e.g., *Prosopocoilus downesi*, Figs. 12.4.5–6), Cetoniinae (e.g., *Chlorocala viridicyanea*, *Pachnoda* spp.) and Cerambycidae (e.g., *Macrotoma hayesii*, *Sternotomis* spp.). Finally, some species are predators of other insects dwelling on vegetation, of which the Coccinellidae are the best known and richest family in São Tomé and Príncipe.

## **Coleoptera Associated with Decaying Wood**

Woodborer Coleoptera larvae and adults that live within the wood (xylophages) or under bark (subcortical) can be predators, saprophagous or even phytophagous species that seek refuge there. These are surely one of the most diverse and abundant ecological Coleoptera groups in São Tomé and Príncipe, as almost all Coleoptera families present species in these biotopes. Woodborer larvae include numerous species of Anthribidae, Bostrichidae, Brentidae, Buprestidae, Cerambycidae, Curculionidae, Elateridae, Lucanidae, Scarabaeidae, Tenebrionidae, among others. Adult beetles found in this habitat encompass most of the endemic Carabidae (e.g., *Metagonum insulanum*, *Pseudobatenus straneoi*, *Abacetes* spp., *Camptogenys trisetosa*), as well as Histeridae, Laemophloeidae (e.g., *Cryptolestes* spp., *Placonotus* spp.) and Staphylinidae (e.g., *Afrosorius* spp.). It is sometimes possible to find numerous species of most families mentioned above side-by-side in the same tree trunk.

## **Freshwater Coleoptera**

São Tomé and Príncipe exhibit a wide range of freshwater biotopes, including streams, rivulets, lagoons, pools, and phytotelmata, which are habitat to several families of beetles (e.g., Gyrinidae, Haliplidae, Hygrobiidae, Dytiscidae, Hydrophilidae and Hydraenidae). So far, only a few species of Gyrinidae, Dytiscidae, and Hydrophilidae have been recorded from Príncipe, São Tomé, and Annóbón, but considering the abundance of freshwater biotopes on the islands, many more likely remain to be discovered.

## Coleoptera of Agricultural Importance

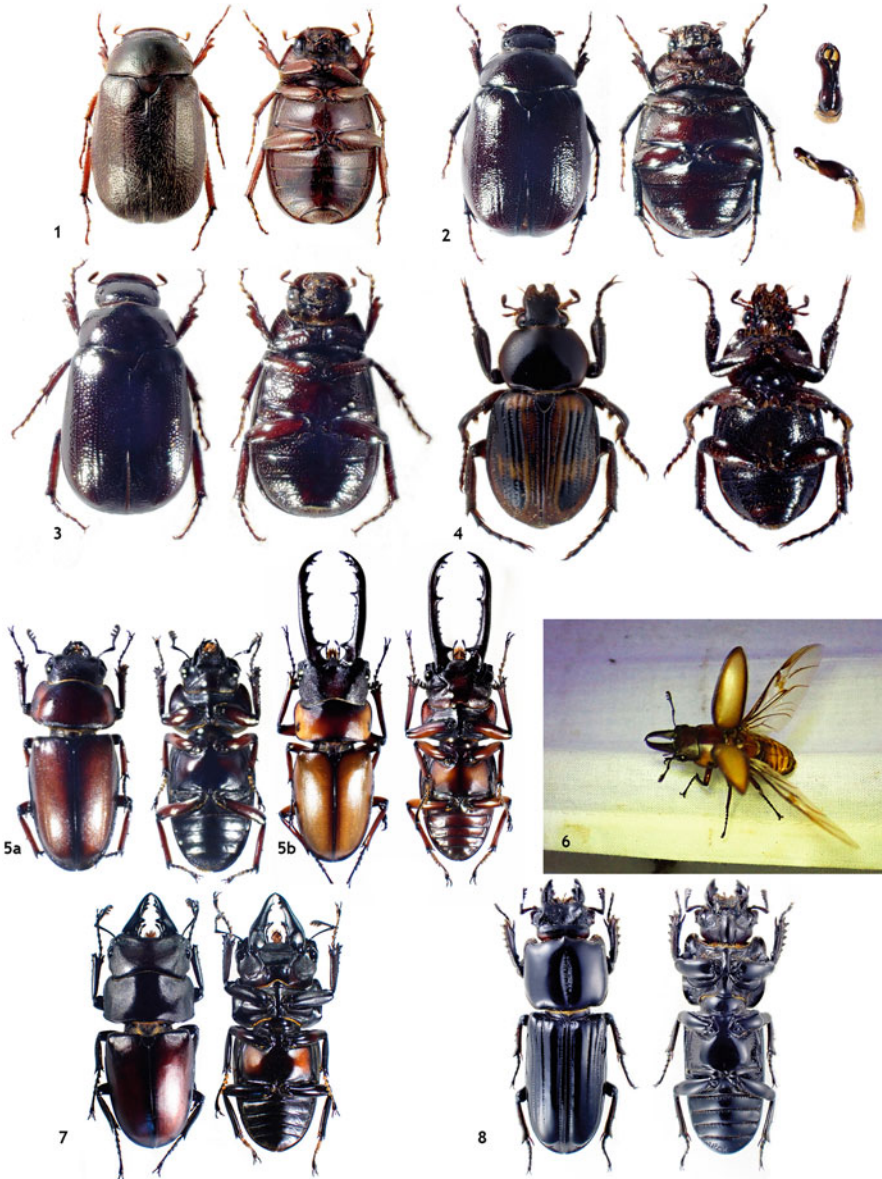
A few beetle species are known to be of agricultural importance, either as pests of cultivated species, or as predators of pests. *Lamprocopa occidentalis* (Chrysomelidae), which we documented in 2019 on both São Tomé and Príncipe, is known as a serious pest on several cultivated Cucurbitaceae (Adja et al. 2014). Some species were deliberately introduced for the control of aphids and other insects that are detrimental to agriculture. Among these, the Coccinellidae *Rodolia cardinalis* was introduced by Castel-Branco (1963) specifically to control the aphid *Toxoptera aurantii* (Boyer de Fonscolombe, 1841), which feeds on *Theobroma cacao*, and seems now to have been extirpated. Other introduced pest predators became established, such as *Cryptognatha nodiceps*, which feeds on the Cottony Cushion Scale *Icerya puchasi* Makell, 1878 (Hemiptera) (Fürsch 1974).

Remarkably, the endemic ladybird species *Chilocorus pilosus*, *Nephus derroni*, and *N. theobromae* were also found on cultivated plants, notably *Coffea arabica*, *Theobroma cacao* and *Cocos nucifera* (Fürsch 1974). This must be the result of local adaptations of either the ladybird species or of their prey, since the host plants are introduced to cultivated plants. The natural habitat and feeding habits of these species are not known.

## Some Charismatic Species

The Príncipe endemic *Macrotoma hayesii* (Figs. 12.2.1–2) is the largest Cerambycidae species in Africa (up to 12 cm), occurring in forests, where *Pentaclethra macrophylla* has been described as its host plant (Tordo 1956). *Macrotoma hayesi* is always rare, and the size of its imago, the adult life stage of beetles, suggests a life cycle lasting several years. Its conservation requires maintaining old growth forests with decaying trees in the Príncipe Natural Park, including Azeitona. Another Cerambycidae, *Ceratocentrus oremansi*, reported in 1998 (Delahaye and Camiade 2016), is much smaller (3.2 to 5.5 cm) and has been found in several forest areas on São Tomé Island.

The Lucanidae fauna of São Tomé and Príncipe is well known and includes nine species and subspecies. *Prosopocoilus antilopus* has a distinct endemic subspecies on each oceanic island: *P. antilopus insulanus* on São Tomé, *P. antilopus beisa* on Príncipe and *P. antilopus amicorum* on Annobón. Eight additional subspecies have been described from Senegal to the Democratic Republic of Congo (Bartolozzi and Werner 2004). *Prosopocoilus downesii* is known from São Tomé, Príncipe and Bioko. Specimens of *Prosopocoilus*, especially males, are known to vary in size (Fig. 12.4), depending on larval growth conditions (Bartolozzi and Werner 2004), with large males sometimes having proportionally long mandibles, as in the case of “mesodonte” *P. antilopus* males (Gomes Alves 1956).



**Fig. 12.4** Photos of charismatic beetle fauna from the oceanic islands of the Gulf of Guinea (cont.). Scarabaeidae: (1) *Apogonia insulana*; (2) *Apogonia tomeensis* (insert: genitalia); (3) *Apogonia decellei*; (4) *Clastocnemis quadrimaculatus oremansi*. Lucanidae: (5) *Prosopocoilus downesi* (left: female, right: male, mesodonte form); (6) *Prosopocoilus downesi* (male, prosodonte form); (7) *Prosopocoilus antilopus insulanus*; (8) *Figulus decipiens*. Photo credits: (1–5, 7–8) Patrick Bonneau, (6) Gabriel Nève

The Cetoniinae *Uloptera canui* (Scarabaeidae) is a typical example of a remarkable species that has a restricted distribution. It was described in 1992 based on a few specimens from two areas in Príncipe at ca. 500 m altitude: Pico Mesa and Pico Dois Irmãos. Given the peculiar ecological conditions of these locations, it is unlikely that the species occurs at lower altitudes. Of the other 12 Cetoniinae species known from São Tomé and Príncipe, 8 are endemic, either at the species or sub-specific level (Table 12.1). Their poor ability to fly long distances likely explains why there are so few species on the islands. One of these, the São Tomé endemic *Stenosternus costatus*, is thought to be the result of an ancient colonization from the Neotropics, since it is the only African species of the tribe Orphnini (Orphninae, Scarabaeidae – Frolov 2013).

Carabidae are generally predators of smaller insects and other arthropods, and sometimes of mollusks. Forty-five species are known from São Tomé and Príncipe. The genus *Pseudobatenus* illustrates an interesting biogeography, since it is only represented by the São Tomé endemic *Pseudobatenus straneoi* and two other species, *P. camerunicus* (Burgeon, 1942) and *P. longicollis* Basilewsky, 1951, which are restricted to Mt. Cameroon (Basilewsky 1975). These three species are most likely altitudinal relicts of a widespread ancestral species. The Cerambycidae *Bangalaia thomensis* has a similar distribution, being found only on São Tomé and in Cameroon, although it occurs at low altitudes (Lepesme and Breuning 1956).

## Concluding Remarks

Príncipe, São Tomé, and Annobón host 403 named species and subspecies of beetles, plus an unknown number of undescribed species. Many of these species are endemic and very little is known about them. For instance, several endemics, such as *Nesopatrum josephii* (Tenebrionidae) and *Panoptes convexus* (Curculionidae), were described from Ilhéu das Rolas by Karsch (1881), and there are no records from São Tomé Island itself. Given the development of touristic infrastructure and overall environmental degradation on Ilhéu das Rolas, it is not known if these species persist. An improved knowledge of the fauna of the archipelago would require a variety of sampling techniques deployed in a wide range of habitats, including some low-cost canopy trapping (Bar-Ness et al. 2011). The main task, however, would be identification, which would require engaging specialists of the various families. The establishment of a local reference collection would be an important asset to train and raise awareness of the beetle fauna.

The long-term conservation of the beetle fauna, as for most of the endemic terrestrial fauna of Príncipe, São Tomé, and Annobón relies on effective conservation of native forests. These still cover about 30% of the islands, an unusually high percentage that is linked to the rugged topography (Norder et al. 2020). The capture



and export of beetles should also be controlled, namely of endemic species that might be particularly vulnerable, such as the endemic as *Macrotoma hayesii* (Fig. 12.2.1–2), which occurs at low densities. This and several other endemic beetle species, such *Rhizophlatys canui* and *Figulus decipiens* (Figs. 12.4.4 and 12.4.8) are emblematic and could serve as flagship species for the conservation of their habitats, especially old growth forests, where standing dead old trees are key habitat for the larvae. Visits to the forests and producing conservation educational material using beetle fauna may play an important role in educating the public about the uniqueness and exceptional biodiversity of the islands.

**Acknowledgments** We thank the authorities of the Príncipe Natural Park for their help in the field and sampling permit. The Centro de Investigação Agronómica e Tecnológica de São Tomé e Príncipe (CIAT-STP) authorized the export of specimens (permit N°011/2019). Laurent Soldati, Marc Lacroix, and Yves Gomy identified specimens of Tenebrionidae, Melolonthinae, and Histeridae, respectively. Roberto Poggi, Honorary Curator of Museo Civico di Storia Naturale “Giacomo Doria” in Genoa (Italy), offered many works based on Leonardo Fea’s expeditions. Comments from Dave Kavanaugh greatly improved this chapter.

### Supplementary Material

A full text format of Appendix and Table 12.2, with references to the occurrence of all species in Príncipe, São Tomé, and Annobón, together with the main synonyms is available on <https://doi.org/10.5281/zenodo.5151308>.

## Appendix

Appendix List of Coleoptera taxa known from the islands of Príncipe, São Tomé, and Annobón. “Microland” refers to species added to the known São Tomé and Príncipe fauna during our two expeditions in February and October 2019. E: endemic species, I: introduced species, R: resident on the islands, \*: species recorded during the 2019 Microland expeditions (ML)

Higher taxonomy	Species	P	ST	A	Reference	ML	Synonyms
Family <b>Anthribidae</b> Billberg, 1820							
Subfamily <b>Anthrribinae</b> Billberg, 1820							
<i>Acorynus</i> Schönherr, 1833	<i>Acorynus benitensis</i> Jordan, 1903	R			Jordan, 1920		
<i>Apatenia</i> Pascoe 1859	<i>Apateni benina</i> Jordan, 1920	E	E		Jordan, 1920		
<i>Cenchrormorphus</i> Fairmaire, 1893	<i>Cenchrormorphus fulvum</i> Jordan, 1903		R		Jordan, 1920		<i>Derographium fulvum</i>
<i>Gynandrocerus</i> Lacordaire, 1866	<i>Gynandrocerus thomensis</i> Jordan, 1911	E	E		Jordan, 1911		
<i>Litocerus</i> Schönherr, 1833	<i>Litocerus beninus</i> Jordan, 1920	E	E		Jordan, 1920		
<i>Phloeobius</i> Schönherr, 1823	<i>Phloeobius hypoxanthus</i> Jordan, 1911	E	E		Jordan, 1911		
<i>Xylinada</i> Berthold, 1827	<i>Xylinada princeps</i> Jordan, 1920	E			Jordan, 1920		<i>Xylinades princeps</i>
	<i>Xylinada thomasius</i> Jordan, 1911	E	E		Jordan, 1911		<i>Xylinades thomasius</i>
Subfamily <b>Choraginae</b> Kirby, 1819							
<i>Araecerus</i> Schönherr, 1823	<i>Araecerus fasciculatus</i> (Degeer, 1775)	R	R		Jordan, 1920		
Family <b>Biphyllidae</b> Le Conte, 1861	Unidentified species		R?		Microland	*	
Family <b>Bostrichidae</b> Latreille, 1802							
Subfamily <b>Apatinae</b> Jacquelin du Val, 1861							
<i>Apaté</i> Fabricius, 1775	<i>Apaté cephalotes</i> (Olivier, 1790)	R	R		Microland	*	<i>Phonapate frontalis</i>
	<i>Apaté degener</i> Murray, 1867		R		Lesne, 1906		
	<i>Apaté monachus</i> Fabricius, 1775		R	R	Lesne, 1906	*	
	<i>Apaté terebrans</i> (Pallas, 1772)	R			Lesne, 1906		
<i>Phonapate</i> Lesne, 1895	<i>Phonapate discreta</i> Lesne, 1906	E			Lesne, 1906		

(continued)

Higher taxonomy	Species	P	ST	A	Reference	ML	Synonyms
Subfamily <b>Bostrichinae</b> Latreille, 1802							
<i>Bostrychophiltes</i> Lesne, 1899	<i>Bostrychophiltes cornutus</i> (Olivier, 1790)		R		Lesne, 1906		
<i>Xylionulus</i> Lesne, 1901	<i>Xylionulus transvena</i> (Lesne, 1900)			R	Lesne, 1906		
Subfamily <b>Dinoderinae</b> C.G. Thomson, 1863							
<i>Rhyzopertha</i> Stephens, 1830	<i>Rhyzopertha dominica</i> (Fabricius, 1792)	R	R		Luna de Carvalho, 1984		
Family <b>Brentidae</b> Billberg, 1820							
Subfamily <b>Brentinae</b> Billberg, 1820							
<i>Adidactus</i> Senna, 1894	<i>Adidactus striolatus</i> (Fairmaire, 1897)	R			Calabresi, 1920	*	
<i>Cerobates</i> Schönherr, 1840	<i>Cerobates sennae</i> Calabresi, 1920	R	R		Calabresi, 1920	*	
<i>Eumecopodus</i> Calabresi, 1920	<i>Cerobates sulcatus sulcirostris</i> Thomson, 1858	R	R		Calabresi, 1920		
<i>Gynandrorhynchus</i> Lacordaire, 1866	<i>Eumecopodus fuliginosus</i> Calabresi, 1920		E		Calabresi, 1920		
<i>Microtrachelizus</i> Senna, 1893	<i>Gynandrorhynchus vittipennis</i> (Fähræus, 1871)	R	R		Calabresi, 1920	*	<i>Mygaleicus vittipennis</i> ; <i>Mygaleicus vittipennis nitida</i>
<i>Orphanobrentus</i> Damoiseau, 1962	<i>Microtrachelizus aethiopicus</i> Calabresi, 1920	R			Calabresi, 1920	*	
<i>Pseudomygaleicus</i> de Muizon, 1960	<i>Orphanobrentus picipes</i> (Olivier, 1791)	R			Damoiseau, 1963		
<i>Rhinopteryx</i> Lacordaire, 1865	<i>Pseudomygaleicus georgi</i> (Karsch, 1881)	E	E		Karsch, 1881		<i>Ceocephalus georgi</i>
<i>Spatherhinus</i> Power, 1879	<i>Rhinopteryx foveipennis</i> (J.Thomson, 1858)	R	R		Calabresi 1920	*	
	<i>Spatherhinus longiceps</i> Kolbe, 1888	R			Calabresi, 1920		

<i>Usambius</i> Kolbe, 1892	<i>Usambius advena</i> (Pascoe, 1866)	R	R	Calabresi, 1920	<i>Usambius conradti</i>
Family <b>Buprestidae</b> Leach, 1815					
Subfamily <b>Agrilinae</b> Laporte, 1835					
<i>Agrilus</i> Curtis, 1825	<i>Agrilus feae</i> Kerremans, 1906	E		Kerremans, 1906	
Subfamily <b>Buprestinae</b> Leach, 1815					
<i>Chrysobothris</i> Eschscholtz, 1829	<i>Chrysobothris dorsata</i> (Fabricius, 1787)		R	Kerremans, 1906	
<i>Megactenodes</i> Kerremans, 1893	<i>Megactenodes westermanni</i> (Gory et Laporte, 1838)		R	Kerremans, 1906	
Subfamily <b>Chrysochroinae</b> Laporte, 1835					
<i>Lampetis</i> Dejean, 1833	<i>Lampetis zona</i> (Thomson, 1858)		R	Kerremans, 1914	<i>Damarisila zona</i>
<i>Parataenia</i> Kerremans, 1892	<i>Parataenia chrysochlora</i> (Palisot de Beauvois, 1805)		R	Kerremans, 1906	
Family <b>Carabidae</b> Latreille, 1802					
Subfamily <b>Brachininae</b> Bonelli, 1810					
<i>Brachinulus</i> Basilewsky, 1958	<i>Brachinulus viettei</i> Basilewsky, 1958	E		Basilewsky, 1958	
<i>Pheropsophus</i> Solier, 1833	<i>Pheropsophus (Stenapinus) amadori</i> Lassalle & Roux, 2021		E	Lassalle & Roux, 2021	
	<i>Pheropsophus (Stenapinus) fastigiatus</i> (Linnaeus, 1764)		R	Basilewsky, 1975	
Subfamily <b>Harpalinae</b> Bonelli, 1810					
<i>Idiomela</i> Tschitscherine, 1900	<i>Idiomela (Egaploa) crenulata</i> (Dejean, 1829)		R	Basilewsky, 1975	<i>Egaploa crenulata</i>
<i>Notiobia</i> Perty, 1830	<i>Notiobia (Diarypus) sanctithomae</i> (Serrano, 1995)		E	Serrano, 1995	

(continued)

Higher taxonomy	Species	P	ST	A	Reference	ML	Synonyms
<i>Progonochaetus</i> G. Müller, 1938	<i>Progonochaetus (Progonochaetus) planicollis</i> (Putzeys, 1882)	R	R		Basilewsky, 1975		<i>Dichaetochilus planicollis</i>
<i>Siopelus</i> Murray, 1859	<i>Siopelus (Pseudostopelus) pulchellus</i> (Dejean, 1829)		R		Basilewsky, 1975		<i>Aulacoryssus pulchellus</i>
<i>Stenolophus</i> Dejean, 1821	<i>Stenolophus (Egadroma) scapularis</i> (Dejean, 1831)		R		Basilewsky, 1975		<i>Stenolophus scapulare</i>
Subfamily <b>Lebinae</b> Bonelli, 1810							
<i>Anaulacus</i> W.S. MacLeay, 1825	<i>Anaulacus (Microus) mocqueryzi</i> (Chaudoir, 1878)	R	R		Serrano, 1995		<i>Microus mocqueryzi</i>
<i>Calleidia</i> Latreille, 1824	<i>Calleidia (Stenocallida) ruficollis</i> (Fabricius, 1801)		R		Serrano, 1995		
<i>Dromius</i> Bonelli, 1810	<i>Dromius (Klepterus) basilewskyi</i> (Serrano, 1995)		E		Serrano, 1995		
<i>Pentagonica</i> Schmidt-Göbel, 1846	<i>Pentagonica boavistensis</i> Serrano, 1995		E		Serrano, 1995		
	<i>Pentagonica nigrifida</i> Straneo, 1943	E			Straneo, 1943		
<i>Perigona</i> Laporte de Castenau, 1835	<i>Perigona (Euripogona) congoana</i> Burgeon, 1935	R			Basilewsky, 1989		
	<i>Perigona (Perigona) pallida</i> Laporte, 1835		R		Basilewsky, 1975		
	<i>Perigona (Perigona) parallela</i> Chaudoir, 1878	R	R		Basilewsky, 1989		
	<i>Perigona (Perigona) principensis</i> Serrano, 2008	E			Serrano, 2008		
	<i>Perigona (Trechicus) nigriceps</i> (Dejean, 1831)		R		Basilewsky, 1975		<i>Trechicus nigriceps</i>
	<i>Perigona (Trechicus) schmitzi</i> (Basilewsky, 1989)		R		Basilewsky, 1989		<i>Trechicus schmitzi</i>

Subfamily <b>Licininae</b> Bonelli, 1810					
<i>Chlaenius</i> Bonelli, 1810	<i>Chlaenius (Lissauchenius) assecla</i> Laferté-Seneclere, 1851	R		Basilewsky, 1975	
<i>Melanchiton</i> Andrewes, 1940	<i>Melanchiton laevisulcis</i> Straneo, 1950	R		Basilewsky, 1975	<i>Melanchiton laeviscus</i>
Subfamily <b>Panagaeinae</b> Bonelli, 1810					
<i>Euschizomerus</i> Chaudoir, 1850	<i>Euschizomerus buquetii</i> Chaudoir, 1850	R		Serrano, 1995	
<i>Microcosmodes</i> Strand, 1936	<i>Microchemus vicinus</i> (Murray, 1857)	R		Basilewsky, 1975	<i>Microcosmodes vicinus</i>
Subfamily <b>Paussinae</b> Latreille, 1807					
<i>Carabidomemmus</i> Kolbe, 1924	<i>Carabidomemmus feae</i> (Gestro, 1902)	E		Gestro, 1902	
<i>Sphaerostylus</i> Chaudoir, 1848	<i>Sphaerostylus (Afrozaena) feai</i> (Basilewsky, 1949)	E		Basilewsky, 1949	
	<i>Sphaerostylus (Afrozaena) insularis</i> (Basilewsky, 1949)	E		Basilewsky, 1949	<i>Pseudozaena insularis</i>
Subfamily <b>Platyninae</b> Bonelli, 1810					
<i>Euplynes</i> Schmidt-Gobel, 1846	<i>Euplynes brunneus</i> Straneo, 1943	E		Straneo, 1943	<i>Euplynes brunneus</i>
<i>Metagonum</i> Jeannel, 1948	<i>Metagonum insulanum</i> Basilewsky, 1948	E		Basilewsky, 1948	
<i>Pseudobatenus</i> Basilewsky, 1951	<i>Pseudobatenus straneoi</i> Basilewsky, 1957	E		Basilewsky, 1957	
<i>Straneoia</i> Basilewsky, 1953	<i>Straneoia collata</i> (Karsch, 1881)	E		Karsch, 1881	<i>Zargus collatatus</i> ; <i>Platynus opacipennis</i> ; <i>Straneoia opacipennis</i>
	<i>Straneoia selignani</i> Kavanaugh, 2005	E		Kavanaugh, 2005	

(continued)

Higher taxonomy	Species	P	ST	A	Reference	ML	Synonyms
Subfamily <b>Pterostichinae</b> Bonelli, 1810							
<i>Abacetus</i> Dejean, 1828	<i>Abacetus amplithorax</i> Straneo, 1940	E			Straneo, 1940		
	<i>Abacetus feai</i> Straneo, 1940	E			Straneo, 1940		
<i>Caelostomus</i> MacLeay, 1825	<i>Caelostomus (Caelostomus) striatocollis</i> (Dejean, 1831)	R			Straneo, 1941–1942	*	
	<i>Caelostomus (Drimostomellus) punctifrons</i> (Chaudoir, 1850)	R			Basilewsky, 1975		<i>Drimostomellus punctifrons</i>
<i>Camptogenys</i> Tschitscherine, 1899	<i>Camptogenys trisetosa</i> (Serrano, 1995)	E			Serrano, 1995	*	<i>Caelostomus (Camptogenys) trisetosus</i>
<i>Dromistomus</i> Jeannel, 1948	<i>Dromistomus complanatus levisirriatus</i> (Straneo, 1941–1942)	E			Straneo, 1941–1942		<i>Caelostomus complanatus</i> var. <i>levisirriatus</i>
<i>Monodryxus</i> Straneo, 1941–1942	<i>Monodryxus crassus</i> (Straneo, 1941–1942)	E			Straneo, 1941–1942		
<i>Morion</i> Latreille, 1810	<i>Morion guineensis</i> Imhoff, 1843	R			Henriques, 1917		<i>Morion guineense</i>
<i>Pachyroxochus</i> Straneo, 1941–1942	<i>Pachyroxochus subquadratus</i> Straneo, 1941–1942	E			Straneo, 1941–1942		
<i>Platyxythrius</i> Straneo, 1941–1942	<i>Platyxythrius insularis</i> Straneo, 1956	E			Straneo, 1941–1942		<i>Platyxythrius laevicollis</i>
Subfamily <b>Scaritinae</b> Bonelli, 1810							
<i>Dyschirius</i> Bonelli, 1810	<i>Dyschirius (Dyschiriodes) zanzibariensis palmeni</i> Kult, 1954	R			Basilewsky, 1975		<i>Dyschirius palmeni</i>
<i>Scarites</i> Fabricius, 1775	<i>Scarites fattuus</i> Karsch, 1881	E			Karsch, 1881		
	<i>Scarites feanus</i> Bänninger, 1937	E			Bänninger, 1937		
Subfamily <b>Trechinae</b> Bonelli, 1810							
<i>Tachyta</i> Kirby, 1837	<i>Tachyta subvirens</i> Chaudoir, 1878	R			Serrano, 2008		

Family <b>Cerambycidae</b> Latreille, 1802						
Subfamily <b>Cerambycinae</b> Latreille, 1802						
Subfamily <b>Audinet-Serville</b> , 1833						
<i>Achryson surinamum</i> (Linnaeus, 1767)	I		Zuzarte & Ser-rano, 1996	*		
<i>Calanthemis thomensis</i> Aurivillius, 1910	E		Aurivillius, 1910			
<i>Chlorida festiva</i> (Linnaeus, 1758)	I		Henriques, 1917	*		<i>Callichroma festivum</i>
<i>Chromalizus (Callichromalizus) fragrans aldbaueri</i> Delahaye & Juhel, 2018	E		Delahaye & Juhel, 2018			
<i>Chromalizus (Chromalizus) rhodoscelis</i> (Jordan, 1903)	E		Jordan, 1903			<i>Cloniophorus rhodoscelis</i> ; <i>Callichroma rhodoscelis</i>
<i>Diaspila periscelis</i> Jordan, 1903	R		Jordan, 1903			
<i>Neoplocaederus fucatus</i> (Thomson, 1858)	R		Villiers, 1957	*		
<i>Philematium greeffi</i> Karsch, 1881	E		Karsch, 1881			
<i>Philomeces thomensis</i> (Aurivillius, 1910)	E		Aurivillius, 1910			
<i>Phrosyne brevicornis</i> (Fabricius, 1775)	R		Henriques, 1917			<i>Euporus brevicornis</i>
<i>Xylotrechus aedon</i> Jordan, 1903	E		Jordan, 1903			
<i>Xystrocera interrupta</i> Jordan, 1903	R		Jordan, 1903	*		<i>Hystrocera interrupta</i>
<i>Xystrocera nigrita</i> Audinet-Serville, 1834	R		Zuzarte & Ser-rano, 1996			
Subfamily <b>Lamiinae</b> Latreille, 1825						
Subfamily <b>Acrocera</b> Dejean, 1835						
<i>Acrocera conjux</i> Thomson, 1858	R		Henriques, 1917			<i>Achmocera anthriboides</i>
<i>Acrocera insularis</i> Breuning, 1940	E		Breuning, 1940			
<i>Acrocera lutosa</i> Jordan, 1903	E		Jordan, 1903			

(continued)



Higher taxonomy	Species	P	ST	A	Reference	ML	Synonyms
<i>Acridoschema</i> Thomson, 1858	<i>Acridoschema thomense</i> Jordan, 1903		E		Jordan, 1903		<i>Acridoschema thomensis</i>
<i>Ancylonotus</i> Dejean, 1835	<i>Ancylonotus tribulus</i> (Fabricius, 1775)		R		Jordan, 1903		
<i>Bangalaia</i> Duvivier, 1890	<i>Bangalaia thomensis</i> Breuning, 1947		R		Breuning, 1947		
<i>Coptops</i> Serville, 1835	<i>Coptops aedificator</i> (Fabricius, 1793)		R		Jordan, 1903		<i>Coptops fusca</i> ; <i>Lamia fusca</i>
	<i>Coptops annobonae</i> Aurivillius, 1910			E	Aurivillius, 1910		<i>Pterolophia annobonae</i>
	<i>Coptops hypocrita</i> Lameere, 1892	R	R		Aurivillius, 1910		
<i>Eunidia</i> Erichson, 1843	<i>Eunidia thomensis</i> Breuning, 1970		E		Breuning, 1970		
<i>Freya</i> Thomson, 1858	<i>Freya maculicornis</i> Thomson, 1858		R		Lepesme, 1948		
	<i>Freya puncticollis</i> Jordan, 1903		E		Jordan, 1903		
<i>Glenea</i> Newman, 1842	<i>Glenea thomensis</i> Breuning, 1958		E		Breuning, 1958		
<i>Insulochamus</i> Dillon & Dillon, 1961	<i>Insulochamus annobonae</i> (Aurivillius, 1928)			E	Aurivillius, 1928		
	<i>Insulochamus thomensis</i> (Jordan, 1903)		E		Jordan, 1903		<i>Monochamus thomensis</i>
<i>Jordanoiletopus</i> Lepesme & Breuning, 1955	<i>Jordanoiletopus (Polymitoleiopus) feai</i> Breuning, 1955		E		Breuning, 1955		
<i>Monochamus</i> Dejean, 1821	<i>Monochamus (Ethiopiochamus) ruspator</i> (Fabricius, 1781)	R	R		Jordan, 1903		
	<i>Monochamus nubilosus</i> Hintz, 1919			E	Hintz, 1919		
	<i>Monochamus principis</i> Breuning, 1956		E		Breuning, 1956		
	<i>Monochamus rubiginosus</i> Teocchi, Sudre & Jiroux, 2014		E		Fairmaire, 1892		<i>Monohommus rubiginus</i>

<i>Phryneta</i> Dejean, 1835	<i>Phryneta verrucosa</i> (Drury, 1773)		I	Villiers, 1957	<i>Phryneta vietii</i>
<i>Phrynetopsis</i> Kolbe, 1894	<i>Phrynetopsis thomensis principis</i> Breuning, 1952	E		Villiers, 1957	
	<i>Phrynetopsis thomensis thomensis</i> (Jordan, 1903)		E	Jordan, 1903	<i>Pachystola trituberculata thomensis</i>
<i>Propocera</i> Dejean, 1835	<i>Propocera (Alphitopola) insularis</i> Breuning, 1936		E	Breuning, 1936	
<i>Protonarthron</i> Thomson, 1858	<i>Protonarthron microps</i> (Jordan, 1903)		R	Jordan, 1903	<i>Plectonarthron microps</i>
<i>Pseudhammus</i> Kolbe, 1894	<i>Pseudhammus (Litigiosus) feae</i> Aurivillius, 1910		E	Aurivillius, 1910	*
<i>Pterolophia</i> Newman, 1842	<i>Pterolophia (Annobonaepraonetha) annobonae</i> Aurivillius, 1910		E	Aurivillius, 1910	
	<i>Pterolophia (Insularepraonetha) ferrugineotincta</i> Aurivillius, 1926	E		Zuzarte & Ser-rano, 1996	
	<i>Pterolophia (Insularepraonetha) insularis</i> Breuning, 1938		E	Zuzarte & Ser-rano, 1996	
	<i>Pterolophia (Principipraonetha) principis</i> Aurivillius, 1910		E	Aurivillius, 1910	
	<i>Pterolophia (Principipraonetha) pseudoprincipis</i> Breuning, 1943		E	Breuning, 1943	
	<i>Pterolophia (Pterolophia) thomensis</i> Breuning, 1938		E	Breuning, 1938	
<i>Ropica</i> Pascoe, 1858	<i>Ropica thomensis</i> Breuning, 1970		E	Breuning, 1970	
<i>Steirastoma</i> Lepeletier & Audinet-Serville, 1830	<i>Steirastoma stellio</i> Pascoe, 1866		I	Zuzarte & Ser-rano, 1996	*
<i>Sternotomis</i> Percheron, 1836	<i>Sternotomis (Pseudolemur) rufozonata</i> Fairmaire, 1902		E	Fairmaire, 1902	<i>Pseudolemur rufozonata</i>
	<i>Sternotomis (Ultiolemur) ducalis</i> (Klug, 1835)		R	Henriques, 1917	<i>Ultiolemur ducalis</i>

(continued)

Higher taxonomy	Species	P	ST	A	Reference	ML	Synonyms
<i>Tragocephala</i> Dejean, 1835	<i>Tragocephala guerinii</i> White, 1856		R		Lepesme & Breuning, 1950		
Subfamily <b>Parandrinae</b> Blanchard, 1845							
<i>Acutandra</i> Santos-Silva, 2002	<i>Acutandra barclayi</i> Bouyer, Drumont & Santos-Silva, 2012		E		Bouyer et al., 2012		
	<i>Acutandra dasilvai</i> Bouyer, Drumont & Santos-Silva, 2012	E			Bouyer et al., 2012		
	<i>Acutandra delahayei</i> Bouyer, Drumont & Santos-Silva, 2012	E	E		Bouyer et al., 2012	*	
	<i>Acutandra oremansi</i> Bouyer, Drumont & Santos-Silva, 2012		E		Bouyer et al., 2012		
Subfamily <b>Pritoninae</b> Latreille, 1802							
<i>Ceratocentrus</i> Aurivillius, 1903	<i>Ceratocentrus oremansi</i> Delahaye & Camiade, 2016		E		Villiers, 1957		<i>Acanthophorus spinicornis</i>
	<i>Ceratocentrus pricipiensis</i> (Nýlander, 2000)	E			Nýlander, 2000		
<i>Macrotoma</i> Audinet-Serville, 1832	<i>Macrotoma hayesi</i> Hope, 1833	E			Tordo, 1956	*	<i>Telotoma hayesi</i>
	<i>Macrotoma palmata</i> (Fabricius, 1793)	R	R		Tordo, 1956		
<i>Malodon</i> Lacordaire, 1869	<i>Malodon downesii</i> Hope, 1843	R	R		Fairmaire, 1891	*	
<i>Sarothrogastra</i> Karsch, 1881	<i>Sarothrogastra edulis</i> (Karsch, 1881)		E		Karsch, 1881		<i>Macrotoma edulis</i>
	<i>Sarothrogastra feai</i> (Lameere, 1912)			E	Lameere, 1912		
Family <b>Chrysomelidae</b> Latreille, 1802							
Subfamily <b>Bruchinae</b> Latreille, 1802							
<i>Callosobruchus</i> Pic, 1902	<i>Callosobruchus maculatus</i> (Fabricius, 1775)		I		Luna de Carvalho, 1984		

<i>Pachymerus</i> Thunberg, 1805	<i>Pachymerus nucleorum</i> (Fabricius, 1792)	I	Castel-Branco, 1966		<i>Pachymerus lacerdae</i>
<i>Zabrotes</i> Horn, 1885	<i>Zabrotes subfasciatus</i> (Boheman, 1833)	I	Luna de Carvalho, 1984		
Subfamily <b>Cassidinae</b> Chapuis, 1875					
<i>Aspidomorpha</i> Hope, 1840	<i>Aspidomorpha</i> ( <i>Afroaspidomorpha</i> ) <i>nigromaculata</i> (Herbst, 1799)	R	Coache & Rainon, 2020		
	<i>Aspidomorpha</i> ( <i>Aspidomorpha</i> ) <i>isparetta</i> Boheman, 1854	R	Coache & Rainon, 2020		
	<i>Aspidomorpha</i> ( <i>Aspidomorpha</i> ) <i>obovata</i> (Klug, 1835)	R	Coache & Rainon, 2020		
	<i>Aspidomorpha</i> ( <i>Aspidomorpha</i> ) <i>quinqüefasciata</i> (Fabricius, 1801)	R	Henriques, 1917		
	<i>Aspidomorpha</i> ( <i>Aspidomorpha</i> ) <i>submutata</i> Weise, 1899	R	Coache & Rainon, 2020		
	<i>Aspidomorpha</i> ( <i>Aspidocassis</i> ) <i>confinis</i> (Klug, 1835)	R	Coache & Rainon, 2020		
<i>Chiridopsis</i> Spaeth, 1922	<i>Chiridopsis aubei</i> (Boheman, 1855)	R	Coache & Rainon, 2020	*	
<i>Laccoptera</i> Boheman, 1855	<i>Laccoptera</i> ( <i>Orphodella</i> ) <i>corrugata</i> (Sahlberg, 1823)	R	Microland	*	<i>Laccoptera corrugata</i>
Subfamily <b>Criocerinae</b> Latreille, 1804					
<i>Hattita</i> Fairmaire, 1891	<i>Hattita limbatella</i> Fairmaire, 1891	E	Fairmaire, 1891		
<i>Lema</i> Fabricius, 1798	<i>Lema rubricollis</i> Klug, 1835	R	Jordan, 1903		
Subfamily <b>Eumolpinae</b> Hope, 1840					
<i>Afroerydemus</i> Selman, 1965	<i>Afroerydemus varicolor</i> (Berlitz, 1919)	E	Berlitz, 1919	*	
<i>Cheiridella</i> Jacoby, 1904	<i>Cheiridella principis</i> Zoia, 2017	E	Zoia, 2017		

(continued)

Higher taxonomy	Species	P	ST	A	Reference	ML	Synonyms
<i>Paraivongius</i> Pic, 1936	<i>Paraivongius (Micromenius)</i> sp.	E			Zoia, 2017		
	<i>Paraivongius (Paraivongius) inexpectatus</i> Zoia, 2017	R			Zoia, 2017		
	<i>Rhembastus Harold, 1877</i>	E			Zoia, 2017		
Subfamily <b>Galerucinae</b> Latreille, 1802							
<i>Lamprocopa</i> Hincks, 1949	<i>Lamprocopa delata</i> (Erichson, 1843)		R		Jordan, 1903		<i>Antlacophora delata</i> ; <i>Aulacophora delata</i>
	<i>Lamprocopa occidentalis</i> Weise, 1895	R	R		Microland	*	
	<i>Longitarsus</i> Latreille, 1829		R?		Microland	*	
	<i>Manobia</i> Jacoby, 1885		R?		Microland	*	
	<i>Nisotra</i> Baly, 1864	E	E		Laboissière, 1920	*	
<i>Notomela</i> Jacoby, 1899	E			Biondi & D'Alessandro, 2015			
Subfamily <b>Hispininae</b> Gyllenhal, 1813							
<i>Dactylispa</i> Weise, 1897	<i>Dactylispa aculeata</i> (Klug, 1835)	R			Gestro, 1905		
	<i>Dactylispa cavicollis</i> Gestro, 1905		E		Gestro, 1905		
	<i>Dactylispa incredula</i> Gestro, 1905		E		Gestro, 1905		
	<i>Dactylispa nigricornis</i> Gestro, 1905	E			Gestro, 1905		
<i>Platypria</i> Guérin-Méneville, 1840	<i>Platypria (Dichirispa) paucispinosa</i> Gestro, 1905	R	R		Gestro, 1905		<i>Platypria feae</i>
	<i>Thomispa Würmli, 1975</i>	E	E		Gestro, 1905	*	<i>Trichispa feae</i>

Family <b>Cicindelidae</b> Latreille, 1802						
Subfamily <b>Cicindelinae</b> W. Horn, 1926						
<i>Cylindera</i> Westwood, 1831	<i>Cylindera (Ifasina) octoguttata</i> (Fabricius, 1787)	R		Serrano, 2008		
<i>Lophyra</i> Motschulsky, 1861	<i>Lophyra neglecta</i> (Dejean, 1825)		R	Gomes Alves, 1956		<i>Lophyra discoidea</i>
<i>Myriochila</i> Motschulsky, 1862	<i>Myriochila melancholica</i> (Fabricius, 1798)	R	R	Jordan, 1903		<i>Myriochile melancholica</i> ; <i>Cicindela melancholica</i>
Family <b>Ciidae</b> Leach, 1819						
Subfamily <b>Ciinae</b> Leach, 1819						
<i>Xylographus</i> Melli., 1849	<i>Xylographus nitidissimus</i> Pic, 1916		R	Pic 1916		
Family <b>Cleridae</b> Latreille, 1802						
Subfamily <b>Korynetinae</b> Laporte, 1836						
<i>Necrobia</i> Olivier, 1800	<i>Necrobia rufipes</i> (De Geer, 1775)		I	Luna de Carvalho, 1984		
Family <b>Coccinellidae</b> Latreille, 1807						
Subfamily <b>Chilocorinae</b> Mulsant, 1846						
<i>Chilocorus</i> Leach, 1815	<i>Chilocorus cacti</i> (Linnaeus, 1767)		R	Castel-Branco, 1963		
	<i>Chilocorus pilosus</i> Sicard, 1920		E	Sicard, 1920		
	<i>Endochilus plagiatus</i> Sicard, 1920		E	Sicard, 1920		
	<i>Endochilus styx</i> Sicard, 1911		E	Sicard, 1911		
<i>Exochomus</i> Redtenbacher, 1843	<i>Exochomus flavipes</i> (Thunberg, 1781)		R	Sicard, 1920		<i>Exochomus nigromaculatus insulicola</i>
	<i>Exochomus nigrifrons</i> Gerstäcker, 1871		R	Fürsch, 1974		<i>Brumus nigrifrons</i>
Subfamily <b>Coccinellinae</b> Latreille, 1807						
<i>Cheilomenes</i> Mulsant, 1850	<i>Cheilomenes sulphurea</i> (Olivier, 1791)		R	Henriques, 1917		

(continued)

Higher taxonomy	Species	P	ST	A	Reference	ML	Synonyms
<i>Coccinella</i> Linnaeus, 1758	<i>Coccinella intermedia</i> (Crotch, 1874)		E		Gordon, 1987		
<i>Micraspis</i> Chevrolat in Dejean, 1836	<i>Micraspis striata</i> (Fabricius, 1792)		R		Houngpati et al., 2020		<i>Alesia striata</i>
<i>Oenopia</i> Mulsant, 1850	<i>Oenopia doderoi</i> (Sicard, 1911)		E		Sicard, 1911		<i>Coccinella doderoi</i> ; <i>Synharmonia doderoi</i>
<i>Thea</i> Mulsant, 1846	<i>Thea moniqueae</i> Fürsch, 1974		E		Fürsch, 1974		
Subfamily <b>Epilachninae</b> Mulsant, 1846							
<i>Chnootriba</i> Dejean, 1835	<i>Chnootriba elaterii</i> (Rossi, 1794)		R		Houngpati et al., 2020		
Subfamily <b>Exoplectrinae</b> Crotch, 1874							
<i>Aulis</i> Mulsant, 1850	<i>Aulis nigricordis</i> Fürsch, 1974		E		Fürsch, 1974		
Subfamily <b>Microweiseinae</b> Leng, 1920							
<i>Scymnomorphus</i> Weise, 1897	<i>Scymnomorphus minuta</i> Fürsch, 1974		E		Fürsch, 1974		<i>Sukunahikona minuta</i>
	<i>Scymnomorphus principiensis</i> Gomes Alves & Castel-Branco, 1962		E		Gomes Alves & Castel-Branco, 1962		
Subfamily <b>Ortaliinae</b> Mulsant, 1850							
<i>Rodolia</i> Mulsant, 1850	<i>Rodolia cardinalis</i> (Mulsant, 1850)		I		Castel-Branco, 1963		
	<i>Rodolia seabrai</i> Sicard, 1920		E		Sicard, 1920		
	<i>Rodolia vulpina</i> Fürsch, 1974		E		Fürsch, 1974		
Subfamily <b>Scymninae</b> Mulsant, 1846							
<i>Cryptognatha</i> Mulsant, 1850	<i>Cryptognatha nodiceps</i> Marschall, 1912		I		Castel-Branco, 1963		
	<i>Nephus derroni</i> Fürsch, 1974		E		Fürsch, 1974		
	<i>Nephus theobromae</i> Fürsch, 1974		E		Fürsch, 1974		

<i>Platynaspis</i> Redtenbacher, 1843	<i>Platynaspis capicola</i> Crotch, 1874	R	Fürsch, 1974	
<i>Scymnus</i> Cuvier, 1816	<i>Scymnus levillanti</i> Mulsant, 1850	R	Fürsch, 1974	
	<i>Scymnus nubilus</i> Mulsant, 1850	R	Houkpati et al., 2020	<i>Scymnus canariensis</i>
	<i>Scymnus oblongoides</i> Fürsch, 1974	E	Fürsch, 1974	
	<i>Scymnus scapiliferus</i> Mulsant, 1850	R	Gomes Alves, 1973	
	<i>Scymnus senegalensis</i> Mader, 1955	R	Houkpati et al., 2020	
<i>Stethorus</i> Weise, 1885	<i>Stethorus chazeaui</i> Fürsch, 1974	E	Fürsch, 1974	
Subfamily <b>Sticholotidinae</b> Weise, 1901				
<i>Pharoscyrmus</i> Bedel, 1906	<i>Pharoscyrmus exiguus</i> Weise, 1913	R	Gomes Alves, 1973	
	<i>Pharoscyrmus tetrastictus</i> Sicard, 1930	R	Fürsch, 1974	
	<i>Pharoscyrmus tomeensis</i> Fürsch, 1974	E	Fürsch, 1974	
Family <b>Curculionidae</b> Latreille, 1802				
Subfamily <b>Conoderinae</b> Schönherr, 1833				
<i>Panoptes</i> Gerstaecker, 1860	<i>Panoptes convexus</i> Karsch, 1881	E	Karsch, 1881	
Subfamily <b>Cryptorhynchinae</b> Schönherr, 1825				
<i>Cyanobolus</i> Schönherr, 1837	<i>Cyanobolus greeffi</i> Karsch, 1881	E	Karsch, 1881	<i>Cyanobolus greeffi</i>
<i>Mechistocerus</i> Fauvel, 1862	<i>Mechistocerus nubeculosus</i> Fairmaire, 1891	R	Fairmaire, 1891	<i>Mechistocerus nubeculosus</i>
Subfamily <b>Entiminae</b> Schönherr, 1823				
<i>Phyllobius</i> Germar, 1824	<i>Phyllobius verruculatus</i> Karsch, 1881	E	Karsch, 1881	

(continued)



Higher taxonomy	Species	P	ST	A	Reference	ML	Synonyms
<i>Saotomia</i> Borovec & Anderson, 2021	<i>Saotomia tuberculata</i> Borovec & Anderson, 2021		E		Borovec & Anderson, 2021		
Subfamily <b>Molytinae</b> Schönherr, 1823							
<i>Aethiopacorep</i> Voisin, 1992	<i>Aethiopacorep africanus</i> (Hustache, 1932)			E	Cristóvão & Lyal, 2018		
<i>Sternuchopsis</i> Heller, 1917	<i>Sternuchopsis</i> sp.		R?		Microland	*	
<i>Titilayo</i> Cristóvão & Lyal, 2018	<i>Titilayo barclayi</i> Cristóvão & Lyal, 2018		E		Cristóvão & Lyal, 2018		
	<i>Titilayo perrinae</i> Cristóvão & Lyal, 2018		E		Cristóvão & Lyal, 2018		
	<i>Titilayo saotomense</i> Cristóvão & Lyal, 2018		E		Cristóvão & Lyal, 2018		
	<i>Titilayo tumeri</i> Cristóvão & Lyal, 2018		E		Cristóvão & Lyal, 2018		
Subfamily <b>Platypodinae</b> Shuckard, 1839							
<i>Chaetastus</i> Nunberg 1953	<i>Chaetastus tuberculatus</i> (Chapuis, 1865)		R		Beaver & Lóyttyniemi, 1985		
<i>Costaroplatus</i> Nunberg, 1963	<i>Costaroplatus pernix</i> (Schedl, 1941)		E		Wood & Bright, 1992		<i>Platyscapus pernix</i>
<i>Doliopygus</i> Browne, 1962	<i>Doliopygus erichsoni</i> (Chapuis, 1865)		R		Beaver & Lóyttyniemi, 1985		<i>Crossotarsus erichsoni</i>
	<i>Doliopygus ibex</i> Schedl, 1941		E		Wood & Bright, 1992		
<i>Periommatius</i> Chapuis, 1866	<i>Periommatius excisus</i> Strohmeier, 1912	R	R		Wood & Bright, 1992		

<i>Platypus</i> Herbst, 1793	<i>Platypus hintzi</i> Schaufuss, 1897	I	Wood & Bright, 1992	
	<i>Platypus intermedius</i> (Schedl, 1937)	R	Wood & Bright, 1992	<i>Stenoplatypus intermedius</i>
	<i>Platypus parallelus</i> (Fabricius, 1801)	I	Wood & Bright, 1992	
Subfamily <b>Scolytinae</b> Latreille, 1804				
<i>Hapalogenius</i> Hagedorn, 1912	<i>Hapalogenius dubius</i> Eggers, 1920	R	Medler, 1980	<i>Hylesinopsis dubius</i>
<i>Hypothenemus</i> Westwood, 1836	<i>Hypothenemus hampei</i> (Ferrari, 1867)	I	Kaden, 1930	<i>Stephanoderes hampei</i>
<i>Xyleborus</i> Eichhoff, 1864	<i>Xyleborus ferrugineus</i> (Fabricius, 1801)	I	Luna de Carvalho 1984	
Family <b>Dryophthoridae</b> Schönherr, 1825				
Subfamily <b>Dryophthorinae</b> Schönherr, 1825				
<i>Cosmopolites</i> Chevrolat, 1885	<i>Cosmopolites sordidus</i> (Germar, 1824)	R	Jordan, 1903	<i>Sphenophorus sordidus</i> ; <i>Sphenophorus striatus</i>
<i>Sitophilus</i> Schönherr, 1838	<i>Sitophilus oryzae</i> (Linnaeus, 1763)	I	Luna de Carvalho, 1984	
Subfamily <b>Rhynchophorinae</b> Schönherr, 1833				
<i>Metamastus</i> Horn, 1873	<i>Metamastus hemipterus</i> Linnaeus, 1758	R	Microland *	
<i>Temnoschoita</i> Chevrolat, 1885	<i>Temnoschoita quadrimaculata</i> Csiki, E., 1936	R	Henriques, 1917	
Family <b>Dytiscidae</b> Leach, 1815				
Subfamily <b>Copelatinae</b> Van den Branden, 1885				
<i>Copelatus</i> Erichson, 1832	<i>Copelatus pallidus</i> Régimbart, 1895	R	Régimbart, 1904 *	

(continued)

Higher taxonomy	Species	P	ST	A	Reference	ML	Synonyms
Subfamily <b>Dytiscinae</b> Leach, 1815							
<i>Cybister</i> Curtis, 1827	<i>Cybister (Melanectes) vulneratus</i> Klug, 1834	R	R		Jordan, 1903		<i>Trogus binotatus</i> ; <i>Melanectes vulneratus</i> ; <i>Cybister binotatus</i>
Family <b>Elateridae</b> Leach, 1815							
Subfamily <b>Agrypninae</b> Candèze, 1857							
<i>Calais</i> Laporte de Castelnau, 1836	<i>Calais controversa</i> (Karsch, 1881)		E		Karsch, 1881	*	<i>Ctenicera controversa</i> ; <i>Alaus chalcolepidinus</i>
<i>Elasmosomus</i> Schwarz, 1903	<i>Elasmosomus mocquerysi</i> (Fleutiaux, 1902)	E	E		Girard, 2017		
<i>Lanelater</i> Arnett, 1952	<i>Lanelater glabratus</i> (Gyllenhal, 1817)	R			Girard, 2017	*	<i>Lanelater substriatus</i>
Subfamily <b>Denticollinae</b> Stein & Weise, 1877							
<i>Melanoxanthus</i> Dejean, 1833	<i>Melanoxanthus inaequalis</i> Candèze, 1881		R		Girard, 2017		
Subfamily <b>Elaterinae</b> Leach, 1815							
<i>Propsephus</i> Hyslop, 1921	<i>Propsephus athoides</i> (Candèze, 1881)		R		Fairmaire, 1891		
	<i>Propsephus campyloides</i> (Candèze, 1897)		E		Fairmaire, 1891		<i>Psephus athoides</i>
	<i>Propsephus melanotoides</i> (Fairmaire, 1891)		E		Fairmaire, 1891		
	<i>Propsephus scitulus</i> Schwarz, 1909		E		Girard, 2017		
Subfamily <b>Lissominae</b> Laporte, 1835							
<i>Lissomus</i> Dalman, 1824	<i>Lissomus francisci</i> Karsch, 1881		E		Karsch, 1881	*	
Family <b>Endomychidae</b> Leach, 1815							
Subfamily <b>Lycoperdininae</b> Bromhead, 1838							
<i>Ancylopus</i> Costa, 1854	<i>Ancylopus meridionalis</i> Stroheker, 1962		R		Microland	*	

Family <b>Gyrinidae</b> Latreille, 1810						
Subfamily <b>Gyrininae</b> Latreille, 1810						
<i>Orectogyrus</i> Régimbart, 1884	<i>Orectogyrus (Lobogyrus) lionotus</i> Régimbart, 1884	R		Régimbart, 1904		
Family <b>Histeridae</b> Gyllenhal, 1808						
Subfamily <b>Dendrophilinae</b> Reitter, 1909						
<i>Platylomalus</i> Cooman, 1948	<i>Platylomalus digitatus</i> (Wollaston, 1867)	R		Gomy, 2004		
	<i>Platylomalus longicornis</i> (Lewis, 1906)	E		Lewis, 1906		
Subfamily <b>Histerinae</b> Gyllenhal, 1808						
<i>Apobletes</i> Marseul, 1861	<i>Apobletes macer</i> (Lewis, 1906)	E		Lewis, 1906		<i>Platysoma macer</i>
<i>Corticalinus</i> Gomy, 2004	<i>Corticalinus minusculus</i> (Schmidt, 1893)	R		Gomy, 2004		
<i>Hololepta</i> Paykull, 1811	<i>Hololepta syntexis</i> Lewis, 1900	R		Lewis, 1900		*
<i>Pachycraerus</i> Marseul, 1854	<i>Pachycraerus chlorites</i> Lewis, 1900	R		Lewis, 1900		
	<i>Pachycraerus cyanescens</i> Erichson, 1834	R		Gomy, 2004		*
<i>Platylister</i> Lewis, 1892	<i>Platylister (Ricinodendrus) foliaceus</i> (Paykull, 1811)	R		Gomy, 2004		*
<i>Teretrius</i> Erichson, 1834	<i>Teretrius braganzae</i> Lewis, 1900	R		Lewis, 1900		
Family <b>Hybosoridae</b> Erichson, 1847						
Subfamily <b>Hybosorinae</b> Erichson, 1847						
<i>Hybosorus</i> MacLeay, 1819	<i>Hybosorus illigeri</i> Reiche, 1853	R		Kuijten, 1983		
Family <b>Hydrophilidae</b> Latreille, 1802						
Subfamily <b>Sphaeridiinae</b> Latreille, 1802						
<i>Coelostoma</i> Brullé, 1835	<i>Coelostoma rufitarse</i> (Boheman, 1851)		R	Régimbart, 1907		

(continued)

Higher taxonomy	Species	P	ST	A	Reference	ML	Synonyms
<i>Dactylosternum</i> Wollaston, 1854	<i>Dactylosternum abdominale</i> (Fabricius, 1792)		R		Régimbart, 1907		
	<i>Dactylosternum intermedium</i> Régimbart, 1907	R			Régimbart, 1907		
	<i>Dactylosternum profundum</i> Régimbart, 1907	E			Régimbart, 1907		
Megasternini Mulsant, 1844	Unidentified species		R?		Microland	*	
<i>Pachysternum</i> Motschulsky, 1863	<i>Pachysternum capense</i> (Mulsant, 1844)	R	R		Régimbart, 1907		
<i>Pelosoma</i> Mulsant, 1844	<i>Pelosoma buccalis</i> (Régimbart, 1907)	E			Régimbart, 1907		
Family <b>Laemophloeidae</b> Ganglbauer, 1899							
Subfamily <b>Laemophloeinae</b> Ganglbauer, 1899							
<i>Cryptolestes</i> Ganglbauer, 1899	<i>Cryptolestes atulus</i> Lefkovitch, 1962		R		Lefkovitch, 1962		
	<i>Cryptolestes ferrugineus</i> (Stephens, 1831)		I		Luna de Carvalho, 1984		
	<i>Cryptolestes pusillus</i> (Schönherr, 1817)		I		Luna de Carvalho, 1984		
<i>Placonotus</i> Mac Leay, 1871	<i>Placonotus bolivari</i> (Grouvelle, 1905)		R		Lefkovitch, 1962		
	<i>Placonotus politissimus</i> (Wollaston, 1867)		R		Lefkovitch, 1962		
	<i>Placonotus testaceus</i> (Fabricius, 1787)		I		Luna de Carvalho, 1984		
<i>Xylolestes</i> Lefkovitch, 1962	<i>Xylolestes unicolor</i> (Grouvelle, 1908)		R		Lefkovitch, 1962		
Family <b>Limmichidae</b> Erichson, 1846							
	Unidentified species		R?		Microland	*	

Family <b>Lucanidae</b> Latreille, 1804						
Subfamily <b>Lucaninae</b> Latreille, 1804						
<i>Figulus</i> MacLeay, 1819			R		Griffini, 1906	<i>Figulus sublaevis</i>
	<i>Figulus anthracinus</i> Klug, 1832			E	Gomes Alves, 1973	<i>Figulus sublaevis decipiens</i>
	<i>Figulus decipiens</i> Albers, 1884					
<i>Nigidius</i> MacLeay, 1819			R		Klug, 1835	<i>Nigidius auriculatus</i>
	<i>Nigidius bubalus</i> (Swederus, 1787)				Gomes Alves, 1973	
	<i>Nigidius endroedi</i> Gomes Alves, 1973		E			
<i>Prosopocoilus</i> Westwood, 1845				E	Matsumoto, 2019	
	<i>Prosopocoilus antilopus amicornum</i> Matsumoto, 2019				Griffini, 1906	<i>Prosopocoelus antilopus</i>
	<i>Prosopocoilus antilopus beisa</i> Kriesche, 1919		E			
	<i>Prosopocoilus antilopus insulanus</i> Kriesche, 1919		E		Fairmaire, 1891	<i>Prosopocoelus antilopus</i>
	<i>Prosopocoilus downesii savagei</i> (Hope, 1835)		R	R	Griffini, 1906	<i>Metopodontus downesii</i>
	<i>Prosopocoilus senegalensis</i> (Klug, 1835)		R		Bartolozzi & Werner, 2004	
Family <b>Lycidae</b> Laporte de Castelnau, 1838						
Subfamily <b>Lycinae</b> Laporte, 1836						
<i>Flagrax</i> Kasantsev, 1992			E		Pic, 1926	*
<i>Stadenus</i> Waterhouse, 1879				E	Fairmaire, 1891	<i>Stadenus semiflavus</i> ; <i>Stadenus auberti semiflavus</i>
	<i>Flagrax bifoveolatus</i> Pic, 1924					
	<i>Stadenus auberti sensiflavus</i> Fairmaire, 1891					
Family <b>Lymexylidae</b> Fleming, 1821						
Subfamily <b>Atractocerinae</b> Laporte, 1840						
<i>Atractocerus</i> Palisot de Beauvoir, 1801				R	Jordan, 1903	<i>Atractocerus africanus</i> ; <i>Atractocerus frontalis</i> ; <i>Atractocerus brevicornis africanus</i>
	<i>Atractocerus brevicornis</i> (Linnaeus, 1766)					

(continued)

Higher taxonomy	Species	P	ST	A	Reference	ML	Synonyms
Family <b>Mordellidae</b> Latreille, 1802							
Subfamily <b>Mordellinae</b> Latreille, 1802							
<i>Glipostena</i> Ermisch, 1941	<i>Glipostena nemoralis</i> Franciscolo, 1962		R		Microland	*	
	<i>Ophthalmoglipa horaki</i> Ruzzier, 2015	E			Ruzzier, 2015	*	
	<i>Ophthalmoglipa leblanci</i> Ruzzier, 2015		E		Ruzzier, 2015		
Family <b>Mycteridae</b> Oken, 1843							
Subfamily <b>Hemipeplinae</b> Lacordaire, 1854							
<i>Hemipeplus</i> Latreille, 1825	<i>Hemipeplus africanus</i> Grouvelle, 1915		R		Microland	*	
Family <b>Nitidulidae</b> Latreille, 1802							
Subfamily <b>Carpophilinae</b> Erichson, 1842							
<i>Carpophilus</i> Stephens, 1830	<i>Carpophilus dimidiatus</i> (Fabricius, 1792)		I		Luna de Carvalho, 1984		
	<i>Carpophilus hemipterus</i> (Linnaeus, 1758)		I		Luna de Carvalho, 1984		
Subfamily <b>Epuraeinae</b> Kirejtshuk, 1986							
<i>Epurea</i> Erichson, 1845	<i>Epurea ocularis</i> Fairmaire, 1849		R		Microland	*	<i>Epurea (Haptoncus) ocularis</i>
Family <b>Oedemeridae</b> Latreille, 1810							
Subfamily <b>Oedemerinae</b> Latreille, 1810							
<i>Alloxanthoides</i> Svihla, 1985	<i>Alloxanthoides laterinicta</i> (Pic, 1920)		R		Serrano unpublished data		
	<i>Ditylomorphula bicolorites</i> (Pic, 1922)		E		Pic, 1922		
<i>Monosigynes</i> Vazquez, 2004	<i>Monosigynes semipiceus</i> (Karsch, 1881)		E		Karsch, 1881		<i>Danerecs semipicea</i>

Family <b>Passalidae</b> Leach, 1815					
Subfamily <b>Passalinae</b> Leach, 1815					
<i>Dielymus</i> Hineks, 1933	<i>Dielymus laevis</i> (Klug, 1835)	E	E	Gomes Alves, 1965	*
<i>Pentalobus</i> Kaup, 1868	<i>Pentalobus barbatus</i> (Fabricius, 1801)		R	Jordan, 1903	<i>Pselaphus barbatus</i>
Family <b>Ptiliidae</b> Heer, 1843					
Subfamily <b>Acrotrichinae</b> Reitter, 1909					
<i>Acrotichis</i> Motschulsky, 1848	<i>Acrotichis (Ctenopteryx) discoloroides</i> Johnson, 1969		R	Darby, 2020	
	<i>Acrotichis tersa</i> Johnson, 1969		R	Darby, 2020	
Family <b>Ptilodactylidae</b> Laporte de Castelnau, 1836					
	Unidentified species		R?	Microland	*
Family <b>Ptinidae</b> Latreille, 1802					
Subfamily <b>Anobiinae</b> Fleming, 1821					
<i>Stegobium</i> Motschulsky, 1860	<i>Stegobium panicum</i> (Linnaeus, 1758)		I	Luna de Carvalho, 1984	
Subfamily <b>Xyletininae</b> Gistel, 1848					
<i>Lastoderma</i> Stephens, 1835	<i>Lastoderma serricorne</i> (Fabricius, 1792)		I	Luna de Carvalho, 1984	
Family <b>Scarabaeidae</b> Latreille, 1802					
Subfamily <b>Bolboceratinae</b> Mulsant, 1842					
<i>Bolbocaffer</i> Vulcano, Martinez & Pereira 1969	<i>Bolbocaffer pallens</i> (Kolbe, 1835)		R	Paulian, 1941	<i>Odontaeus pallens</i>
Subfamily <b>Cetoniinae</b> Leach, 1815					
<i>Chlorocala</i> Kirby, 1828	<i>Chlorocala viridicyanea</i> (Palisot de Beauvois, 1821)		R	Janson, 1907	
<i>Diplognata</i> Gory & Percheron, 1833	<i>Diplognata (Diplognatha) gagates</i> Forster, 1771		R	Jordan, 1903	

(continued)



Higher taxonomy	Species	P	ST	A	Reference	ML	Synonyms
<i>Dischista</i> Burmeister, 1842	<i>Dischista rufa</i> (De Geer, 1778)	R	R		Jordan, 1903		<i>Pachnoda rufa</i> ; <i>Cetonia rufa</i>
<i>Grammopyga</i> Kolbe, 1895	<i>Grammopyga cincitcollis</i> (Hope, 1842)	R			Janson, 1907		
	<i>Grammopyga marginicollis</i> (Moser, 1904)	E	E		Moser, 1904		
<i>Leucocelis</i> Burmeister, 1842	<i>Leucocelis fejana</i> Janson, 1907		E		Janson, 1907		
<i>Pachnoda</i> Burmeister, 1842	<i>Pachnoda canui</i> Rigout & Allard, 1992	E			Rigout & Allard, 1992		
	<i>Pachnoda prasina</i> Karsch, 1881	E	E		Karsch, 1881		<i>Cetonia prasina</i>
<i>Phaneresthes</i> Kraatz, 1894	<i>Phaneresthes flavosignata</i> (Moser, 1904)		E		Moser, 1904		
<i>Pseudoheterophana</i> Allard, 1990	<i>Pseudoheterophana canui</i> Allard, 1990	E			Allard, 1990		
<i>Pseudotephraea</i> Kraatz, 1882	<i>Pseudotephraea ancilla ancilla</i> (Harold, 1879)		E		Harold, 1879		
	<i>Pseudotephraea ancilla canui</i> Antoine, 1992	E			Jordan, 1903		<i>Tephraea ancilla</i>
<i>Uloptera</i> Burmeister, 1842	<i>Uloptera canui</i> Antoine, 1992	E			Antoine, 1992		
Subfamily <b>Dynastinae</b> MacLeay, 1819							
<i>Cyphonistes</i> Burmeister, 1847	<i>Cyphonistes camurus</i> Karsch, 1881		E		Karsch, 1881		
<i>Oryctes</i> Hellwig, 1798	<i>Oryctes (Rykanes) capucinus</i> Arrow, 1937	R			Vesco et al., 1999		
	<i>Oryctes (Rykanes) latecavatus</i> Fairmaire, 1891		E		Fairmaire, 1891		
	<i>Oryctes (Rykanoryctes) monoceros</i> Olivier, 1789		I		Vargas Ferreira, 1967		

<i>Rhizoplatys</i> Westwood, 1842					Dechambre, 1983	
	<i>Rhizoplatys canui</i> Dechambre, 1983	E				
	<i>Rhizoplatys mucronatus cedrici</i> Dechambre, 1983	E			Dechambre, 1983	*
<i>Temnorhynchus</i> Hope, 1837						
	<i>Temnorhynchus (Temnorhynchus)</i> <i>coronatus diana</i> (Palisot de Beauvois, 1805)	R			Henriques, 1917	<i>Temnorhynchus diana</i>
	<i>Temnorhynchus (Temnorhynchus)</i> <i>tridentatus</i> Lansberge, 1886	R			Krell, 1994	
Subfamily <b>Melolonthinae</b> MacLeay, 1819						
	<i>Apogonia</i> Kirby, 1819					
	<i>Apogonia decellei</i> Lacroix, 2008	E			Lacroix, 2008	*
	<i>Apogonia insulana</i> Karsch, 1882	E			Karsch, 1882	*
	<i>Apogonia tomeensis</i> Lacroix, 2008	E			Lacroix, 2008	*
Subfamily <b>Orphinae</b> Erichson, 1847						
	<i>Stenosternus</i> Karsch, 1881	E			Karsch, 1881	<i>Mecistoceros costatus</i>
Subfamily <b>Scarabaeinae</b> Latreille, 1802						
	<i>Onthophagus</i> Latreille, 1802					
	<i>Onthophagus (Onthophagus)</i> <i>sellatus</i> Klug, 1845	R	R		d'Orbigny, 1905	
	<i>Onthophagus (Trichonthophagus)</i> <i>juvencus</i> Klug, 1835	R			d'Orbigny, 1905	
	<i>Paraphytus</i> Harold, 1877					
	<i>Paraphytus africanus</i> Boucomont, 1923	R	R		Paulian, 1949	*
	<i>Phalops</i> Erichson, 1848					
	<i>Phalops fimbriatus</i> (Klug, 1835)	R			d'Orbigny, 1913	
	<i>Proagoderus</i> Lansberge, 1883					
	<i>Proagoderus laticollis</i> Klug, 1835	R			d'Orbigny, 1913	

(continued)

Higher taxonomy	Species	P	ST	A	Reference	ML	Synonyms
Subfamily <b>Trichiinae</b> Fleming, 1821							
<i>Clastocnemis</i> Burmeister & Schaum, 1840	<i>Clastocnemis quadrimaculatus oremansi</i> Antoine, 2005		E		Antoine, 2005	*	
	<i>Clastocnemis quadrimaculatus principis</i> Antoine, 2005	E			Antoine, 2005		
<i>Comythovalgus</i> Kolbe, 1884	<i>Comythovalgus aemulus</i> Kolbe, 1897		R		Janson, 1907		
<i>Cryptodontus</i> Burmeister, 1847	<i>Cryptodontus latreilleanus desageeri</i> Burgeon, 1946		E		Henriques, 1917	*	
Family <b>Silvanidae</b> Kirby, 1837							
Subfamily <b>Silvaninae</b> Kirby, 1837							
<i>Ahasverus</i> Gozis, 1881	<i>Ahasverus advena</i> (Waltl, 1834)		I		Luna de Carvalho, 1984		
<i>Cryptamorpha</i> Wollaston, 1854	<i>Cryptamorpha</i> sp.		R?		Microland	*	
<i>Oryzaephilus</i> Ganglbauer, 1899	<i>Oryzaephilus mercator</i> (Fauvel, 1889)		I		Luna de Carvalho, 1984		
	<i>Oryzaephilus surinamensis</i> (Linnaeus, 1758)		I		Luna de Carvalho, 1984		
Family <b>Staphylinidae</b> Lameere, 1900							
Subfamily <b>Osorinae</b> Erichson, 1839							
<i>Afrosorius</i> Fagel, 1958	<i>Afrosorius assiniensis</i> (Fauvel, 1903)		R		Ferreira, 2014		
	<i>Afrosorius curtippennis</i> Fagel, 1958		E		Fagel, 1958		
	<i>Afrosorius strigifrons</i> (Kolbe, 1889)		R		Ferreira, 2014		
	<i>Afrosorius viettei</i> Fagel, 1958		E		Fagel, 1958		
<i>Nacaeus</i> Blackwelder, 1942	<i>Nacaeus aethiops</i> (Eppelsheim, 1895)		R		Fauvel, 1903		

Subfamily <b>Paederinae</b> Fleming, 1821				
<i>Paederus</i> Fabricius, 1775	<i>Paederus angusticeps</i> Bernhauer, 1915	R	Fagel, 1966	
<i>Rugilus</i> Leach, 1819	<i>Rugilus rubelloides</i> (Fagel, 1951)	R	Fagel, 1953	<i>Stilicus rubelloides</i>
<i>Tracypum</i> Fagel, 1977	<i>Tracypum vietnamum</i> Fagel, 1977	E	Fagel, 1977	
Subfamily <b>Staphylininae</b> , Latreille, 1802				
<i>Philonthus</i> Stephens, 1826	<i>Philonthus longicornis</i> Stephens, 1832	R	Ferreira, 2014	
	<i>Philonthus peregrinus</i> Fauvel, 1866	R	Ferreira, 2014	
Subfamily <b>Tachyporinae</b> MacLeay, 1825				
<i>Tachinomorphus</i> Kraatz, 1859	<i>Tachinomorphus africanus</i> (Eppelsheim, 1895)	R	Fauvel, 1903	
Family <b>Tenebrionidae</b> Latreille, 1802				
Subfamily <b>Diaperinae</b> Latreille, 1802				
<i>Ceropria</i> Laporte & Brullé, 1831	<i>Ceropria anthracina</i> Quedenfeldt, 1885	R	Gebien, 1921	
	<i>Ceropria romandi</i> Laporte & Brullé, 1831	R	Gebien, 1921	
<i>Gnathidium</i> Gebien, 1920	<i>Gnathidium cephalotes</i> Gebien, 1921	E	Gebien, 1921	
<i>Hypophloeus</i> Fabricius, 1790	<i>Hypophloeus insularis</i> Gebien, 1921	R	Gebien, 1942	<i>Corticeus insularis</i>
	<i>Hypophloeus piceus</i> Gebien, 1921	E	Gebien, 1921	
	<i>Hypophloeus sternalis</i> Gebien, 1914	E	Gebien, 1914	<i>Corticeus sternalis</i>
<i>Ischnarthron</i> Gebien, 1920	<i>Ischnarthron longipes</i> Gebien, 1921	E	Gebien, 1921	

(continued)

Higher taxonomy	Species	P	ST	A	Reference	ML	Synonyms
<i>Microcrypticus</i> Gebien, 1921	<i>Microcrypticus scriptipennis</i> (Fairmaire, 1875)		R		Gebien, 1942		
<i>Platydemia</i> Laporte de Castelnau & Brullé, 1831	<i>Platydemia capucinum</i> Gebien, 1921	E			Gebien, 1921		
<i>Stomylus</i> Fähræus, 1870	<i>Stomylus maculosus</i> (Thomson, 1858)		R		Gebien, 1942		<i>Pselaphidion macularium</i> ; <i>Pselaphidion maculosum</i> ; <i>Platydemia maculosum</i>
Subfamily <b>Lagrinae</b> Latreille, 1825 (1820)							
<i>Luprops</i> Hope, 1833	<i>Luprops chalceus</i> Gebien, 1921		R		Microland	*	
<i>Physolagria</i> Fairmaire, 1891	<i>Physolagria mollieri</i> Fairmaire, 1891		E		Fairmaire, 1891	*	
<i>Prioscelis</i> Hope, 1840	<i>Prioscelis haesitans</i> Kolbe, 1903		E		Jordan, 1903	*	<i>Prioscelis serrata haesitans</i>
Subfamily <b>Phrenapatinae</b> Sollier, 1834							
<i>Afrotagalus</i> Gebien, 1942	<i>Afrotagalus viettei</i> Ardoin, 1958		E		Ardoin, 1958		
Subfamily <b>Stenochiinae</b> Kirby, 1837							
<i>Alcyonotus</i> Pascoe, 1882	<i>Alcyonotus insularis</i> Ardoin, 1958	E			Ardoin, 1958		
<i>Derosphaerus</i> Thomson, 1858	<i>Derosphaerus globicollis</i> Thomson, 1858	R	R	R	Gebien, 1942		
	<i>Derosphaerus morosus</i> (Motschulsky, 1872)		R		Gebien, 1921		
<i>Eremobatodes</i> Gebien, 1943	<i>Eremobatodes crux</i> (Gebien, 1921)		E		Gebien, 1942	*	<i>Eremobates crux</i>
	<i>Eremobatodes metallicus</i> (Ardoin, 1958)		E		Ardoin, 1958		<i>Eremobates metallicus</i>
<i>Menephilus</i> Mulsant, 1854	<i>Menephilus carbonatus</i> Gebien, 1921	E	E		Gebien, 1921		
	<i>Menephilus conquintatus</i> Karsch, 1881		E		Karsch, 1881	*	

<i>Nesosphaerottus</i> Gebien, 1921	<i>Nesosphaerottus aeneus</i> Gebien, 1921	E		Gebien, 1921	*	
	<i>Nesosphaerottus egena</i> Gebien, 1921	E		Gebien, 1921		
	<i>Nesosphaerottus justii</i> Karsch, 1881	E		Karsch, 1881	*	<i>Derosphaerius justii</i>
	<i>Nesosphaerottus kulzeri</i> Ardoin, 1962	E		Ardoin, 1962		
	<i>Nesosphaerottus marquesi</i> Karsch, 1881	E		Karsch, 1881		<i>Derosphaerius marquesii</i>
	<i>Nesosphaerottus simplicifrons</i> Gebien, 1921	E		Gebien, 1921		
	<i>Nesosphaerottus striatipennis</i> Gebien, 1921	E		Gebien, 1921		
	<i>Nesosphaerottus viettei</i> Ardoin, 1958	E		Ardoin, 1958	*	
	<i>Strongylium</i> Ditmar, 1809	E		Robiche, 2000		
Subfamily <b>Tenebrioninae</b> Latreille, 1802	<i>Strongylium feai</i> Gebien, 1921	E		Gebien, 1921	*	
	<i>Alphitobius</i> Stephens, 1829	I	R	<i>Alphitobius laevigatus</i> (Fabricius, 1781)		Luna de Carvalho, 1984
				<i>Alphitobius viator</i> Mulsant & Godart, 1868		Gebien, 1942
<i>Amenophis insularis</i> Gebien, 1921				E	Gebien, 1921	
<i>Amenophis</i> Thomson, 1858	E	E	<i>Amenophis minor</i> Gebien, 1921		Gebien, 1921	
			<i>Amenophis striata</i> Gebien, 1921		Gebien, 1921	
			<i>Cryphaeus taurus</i> (Fabricius, 1801)	R	Jordan, 1903	<i>Toxicum taurus</i> ; <i>Cryphaeus aries</i>
<i>Diaclina</i> Jacquelin du Val, 1861	R		Gebien, 1921			

(continued)

Higher taxonomy	Species	P	ST	A	Reference	ML	Synonyms
<i>Gonocephalum</i> Solier, 1834	<i>Gonocephalum angolense subtilistriatum</i> Kolbe, 1887		R		Gebien, 1921		<i>Gonocephalum granicolle</i>
	<i>Gonocephalum calcaripes</i> (Karsch, 1881)		R		Karsch, 1881		<i>Opatrum calcaripes</i>
	<i>Gonocephalum feae</i> Gebien, 1921			E	Gebien, 1921		
<i>Hoplonyx</i> Thomson, 1858	<i>Gonocephalum prolixum</i> (Erichson, 1843)	R	R	R	Gebien, 1921		
	<i>Gonocephalum simplex</i> (Fabricius, 1801)		R		Gebien, 1942		
	<i>Hoplonyx insularis</i> Gebien, 1921	E			Gebien, 1921		
<i>Megacantha</i> Westwood, 1843	<i>Megacantha dentata</i> (Fabricius, 1801)	R			Gebien, 1921		
	<i>Nesopatrum josephii</i> (Karsch, 1881)		E		Karsch, 1881		<i>Opatrinus josephi</i>
<i>Palorus</i> Mulsant, 1854	<i>Palorus carinicornis</i> Gebien, 1921		R	R	Gebien, 1921		<i>Platyotus carinicornis</i>
	<i>Palorus subdepressus</i> (Wollaston, 1864)		R		Gebien, 1921		
<i>Peltoides</i> Laporte de Castelnau, 1832	<i>Peltoides senegalensis</i> Laporte de Castelnau, 1832	R			Gebien, 1921		
<i>Tenebrio</i> Linnaeus, 1758	<i>Tenebrio</i> (Afrotenebrio) <i>guineensis</i> Imhoff, 1843	R			Gebien, 1921		
	<i>Tenebrio legalli</i> Robiche, 2009		E		Robiche, 2009		
<i>Tribolium</i> Macleay 1825	<i>Tribolium castaneum</i> (Herbst, 1797)		I		Luna de Carvalho, 1984		
	<i>Tribolium semicostata</i> Gebien, 1921		R		Gebien, 1921		<i>Tenebrioloma semicostata</i>
<i>Uloma</i> Dejean, 1821	<i>Uloma collaris</i> Gebien, 1921	E			Gebien, 1942		
	<i>Uloma costae</i> Karsch, 1881		E		Karsch, 1881	*	
	<i>Uloma laesicollis</i> Thomson, 1858	R			Gebien, 1921		

<i>Zidatus</i> Mulsant & Rey, 1852	<i>Zidatus latipes</i> (Sahlberg, 1823)	R			Gebien, 1921	<i>Opatrinus atratus</i> ; <i>Opatrinus opacus</i>
Family <b>Trogossitidae</b> Latreille, 1802						
Subfamily <b>Trogossitinae</b> Latreille, 1802						
<i>Temnoscheila</i> Westwood, 1830	<i>Temnoscheila patricioi</i> (Karsch, 1881)		E		Karsch, 1881	<i>Trogossita patricioi</i> ; <i>Trogossita patricioi</i>
<i>Tenebroides</i> Piller & Mitterpacher, 1783	<i>Tenebroides maroccanus</i> Reitter, 1884		I		Luna de Carvalho, 1984	
	<i>Tenebroides mauritanicus</i> (Linnaeus, 1758)		I		Luna de Carvalho, 1984	
Family <b>Zopheridae</b> Solier, 1834						
Subfamily <b>Colydinae</b> Billberg, 1820						
<i>Bitoma</i> Herbst, 1793	<i>Bitoma siccana</i> (Pascoe, 1863)	R			Pope, 1961	<i>Bitoma lycitiformis</i>
<i>Mecedanum</i> Erichson, 1845	<i>Mecedanum auberti</i> (Fairmaire, 1882)	R			Serrano, unpublished data	
<i>Microprius</i> Fairmaire, 1868	<i>Microprius rufulus</i> (Motschulsky, 1863)		R		Pope, 1961	<i>Microprius confusus</i>



## References

- Adja NA, Danho M, Alabi TAF et al (2014) Entomofauna associated with African oleaginous cucurbits (*Lagenaria siceraria* Molina (Standl.1930) and *Citrullus lanatus* thumb (Matsum & Nakai 1916)) and impact of pests on production. *Annales de la Société Entomologique de France* 50:301–310
- Allard V (1990) Description d'une nouvelle cétoine de l'île du Prince: *Pseudoheterophana canui* nov.gen., nov.sp. (Col., Cetoniidae, Cetoniini, Heterophanina). *Bulletin de la Société Sciences Nat* 68:22–23
- Antoine P (1992) Quelques espèces nouvelles ou peu connues de la famille des Cetoniidae - III. (Coleoptera, Scarabeoidea). *Bulletin de la Société Sciences Nat* 75–76:6–20
- Ardoin P (1958) Mission du Muséum dans les îles du Golfe de Guinée. *Entomologie: IX Coleoptera Tenebrionidae*. *Bulletin de la Société Entomologique de France* 63:129–136
- Ardoin P (1962) Tenebrionides africains et malgaches nouveaux et notes synonymiques [Col.]. *Bulletin de la Société Entomologique de France* 67:58–79
- Barclay MVL (2006) Tenebrionoidea. In: Cooter J, Barclay MVL (eds) *A Coleopterist's handbook*, 4th edn. *The Amateur Entomologist*, Orpington, pp 113–120
- Bar-Ness YD, McQuillan PB, Whitman M, Junker RR, Cracknell M, Barrows A (2011) Sampling forest canopy arthropod biodiversity with three novel minimal-cost trap designs. *Australian Journal of Entomology* 51:12–21
- Bartolozzi L, Werner H (2004) *Illustrated catalogue of the Lucanidae from Africa and Madagascar*. Taita Publishers, Hradec Králové, p 189
- Basilewsky P (1975) Coléoptères Carabidae recueillis par M. G. Schmitz dans l'île de São Tomé (Ocean Atlantique). *Bulletin et Annales de la Société Royale Belge d'Entomologie* 111:289–294
- Bouchard P, Bousquet Y, Davies A et al (2011) Family-group names in Coleoptera (Insecta). *ZooKeys* 88:1–972
- Bouyer T, Drumont A, Santos-Silva A (2012) Revision of African Parandrinae (Coleoptera, Cerambycidae). *Insecta Mundi* 241:1–85
- Castel-Branco AJF (1963) Entomofauna de São Tomé (Insectos cacaueiro). *Estudos, Ensaios e Documentos* 107:11–94
- Coache A, Rainon B (2020) Contribution à la connaissance des Cassidinae du Bénin (Coleoptera, Chrysomelidae). *Faunitaxys* 8(11):1–53
- Darby M (2020) New species and records of Ptiliidae (Coleoptera) from Africa in the collection of the Natural History Museum, London. *Entomologist's Monthly Magazine* 156:29–47
- Seabra AF de (1922) Insectes de S. Tomé provenant de la mission d'étude du Professeur Sousa da Camara en 1920. *Anais do Instituto de Agronomia, Coimbra Separata*, 27–45
- Delahaye N, Camiade D (2016) Un Acanthophorini nouveau de São Tomé (Coleoptera, Cerambycidae, Prioninae). *Faunitaxys* 4:1–4
- Endrődi S (1985) *The Dynastinae of the world, series entomologica*. Springer, Dordrecht
- Fairmaire L (1891) Contributions à l'étude de la faune entomologique de S. Thomé. *O Instituto Segunda Serie: Jornal Cientifico e Litterario* 39:112–116
- Fairmaire L (1892) Contributions à l'étude de la faune entomologique de S. Thomé. *O Instituto Segunda Serie: Jornal Cientifico e Litterario* 39:640–641
- Fairmaire L (1902) Coléoptères nouveaux de San-Thomé et du Benguéla. *Bulletin de la Société Entomologique de France* 7:134–136
- Fitton JG, Dunlop HM (1985) The Cameroon line, West Africa, and its bearing on the origin of oceanic and continental alkali basalt. *Earth and Planetary Science Letters* 72:23–38
- Frolov A (2013) *Stenosternus* Karsch, a possible link between Neotropical and Afrotropical Orphninae (Coleoptera, Scarabaeidae). *ZooKeys* 335:33–46
- Fürsch H (1974) Die Coccinelliden von São Tomé (Col.). *Mitteilungen der Münchener Entomologischen Gesellschaft* 64:13–39
- Gebien H (1921) Die Tenebrioniden Westafrikas. *Archiv für Naturgeschichte* 86:1–256

- Gebien H (1942) Die Tenebrioniden der Guinea-Inseln. 20. Beitrag zu den wissenschaftlichen Ergebnissen der Forschungsreise H Eidmann nach Spanisch-Guinea 1939 bis 1940. *Zoologischer Anzeiger* 138:106–126
- Gomes Alves ML (1956) Entomofauna da Guiné portuguesa e S. Tomé e Príncipe (Contribuição para o seu conhecimento) coleópteros (Lucanidae, Scarabaeidae, Cicindelidae, Buprestidae). *Boletim Cultural da Guiné Portuguesa* XI:87–105
- Gomy Y, Lemagnen R, Poussereau J (eds) (2016) Les coléoptères de l'île de La Réunion. Orphie, Saint Denis
- Henriques JA (1917) A ilha de S. Tomé sob o ponto de vista histórico-natural e agrícola. *Boletim da Sociedade Broteriana* 27:1–211
- Hintz E (1919) Cerambyciden. In: Friedrichs A (ed) *Wissenschaftliche Ergebnisse der zweiten deutschen Zentral-Afrika-Expedition, 1910–1911*. Klinkhardt & Biermann, Leipzig, pp 599–638
- Hope FW (1833) On the characters of several new genera and species of coleopterous insects. *Proceedings of the Zoological Society of London* 1:61–64
- Iwan D, Ferrer J, Raš M (2010) Catalogue of the world *Gonocephalum* Solier, 1834 (Coleoptera, Tenebrionidae, Opatrini). Part 1. List of the species and subspecies. *Annales Zoologici (Warszawa)* 60(2):245–304
- Jones PJ, Burlison JP, Tye A (1991) Conservação dos ecossistemas florestais na República Democrática de São Tomé e Príncipe. International Union for the Conservation of Nature, Gland & Cambridge (United Kingdom), p 78
- Karsch F (1881) Über von Herrn Professor R. Greeff auf den Guinea-Inseln gesammelte Coleopteren. *Sitzungsberichte der Gesellschaft Naturforschender Freunde zu Berlin* 20:55–62
- Karsch F (1882) Neue Apogonien des Berliner Museums (Coleoptera: Scarabaeidae). *Berliner Entomologische Zeitschrift* 26:121–123
- Kavanaugh DH (2005) A new species of the endemic genus *Straneo* Basilewsky, 1953, from São Tomé (Insecta: Coleoptera: Carabidae: Platynini). *Proceedings of the California Academy of Sciences* 56:275–283
- Klug F (1835) V. Insekten. In: Erman A (ed) *Reise um die Erde durch Nord-Asien und die beiden Océane in den Jahren 1828–30*. Naturhistorischer Atlas, Berlin, pp 27–50
- Kolbe HJ (1899) Ueber neue oder wenig bekannte Arten der Melolonthiden-Gattung *Apogonia* aus Afrika. *Entomologische Nachrichten* 25:39–60
- Lepesme P, Breuning S (1956) Les Sternotomini de l'Ouest africain. *Longicornia (Paris)* 3:269–347
- López-López A, Vogler AP (2017) The mitogenome phylogeny of Adephaga (Coleoptera). *Molecular Phylogenetics and Evolution* 114:166–174
- Lorenz W (2005) Systematic list of extant ground beetles of the world (Insecta coleopteran Geadephaga: Trachypachidae, and Carabidae incl. Paussinae, Cicindelinae, Rhysodinae). Second edition. Published by the author, Tutzing, 530 pp
- Luna de Carvalho E (1984) Guia prático para a identificação de alguns insectos de armazéns e produtos armazenados (3ª parte). Instituto de Investigação Científica Tropical, Lisboa, p 124
- Mendes, LFM, Rocha Pité T, Capela RA, Serrano ARM, Soares AA (1988) Sobre a fauna terrestre e ribeirinha da República Democrática de São Tomé e Príncipe. A missão zoológica do Departamento de Zoologia e Antropologia da Faculdade de Ciências de Lisboa e do Museu Nacional de História Natural (Museu Bocage) à República Democrática de São Tomé e Príncipe (13–VI/7–VII–1984). Nota preliminar. *Arquivos do Museu Bocage Volume Especial*:1–16
- Nilsson AN, Hájek J (2018) A world catalogue of the family Dytiscidae, or the diving beetles (Coleoptera, Adephaga) Version 1.I.2018. Available via [www.waterbeetles.eu](http://www.waterbeetles.eu). Accessed 21 Oct 2021.
- Norder SJ, Lima RF, de Nascimento L et al (2020) Global change in microcosms: environmental and societal predictors of land cover change on the Atlantic Ocean islands. *Anthropocene* 30: 100242
- Rejzek M (2006) Cerambycidae. In: Cooter J, Barclay MVL (eds) *A Coleopterist's handbook*, 4th edn. The Amateur Entomologist, Orpington, pp 121–142

- Robiche G (2000) Contribution à l'étude de la biodiversité des ténébrions des îles de São Tomé et Príncipe (Coleoptera, Tenebrionidae). *Lambillionea* 100:479–483
- Rocha Pité MT (1993) A preliminary survey of Drosophilidae of São Tomé Island. *Annales de la Société Entomologique de France* 29(3):269–280
- Serrano ARM (1995) Coléoptères Caraboidea de l'île de São Tomé (Golfe de Guinée), Faunistique et description d'espèces nouvelles (Coleoptera, Carabidae). *Nouvelle Revue d'Entomologie* 12(4):281–296
- Serrano ARM (2008) A new species of the genus *Perigona* Castelnau, 1835 and new records of tiger and ground beetles for S. Tomé e Príncipe islands (Coleoptera: Caraboidea, Cicindelidae, Carabidae). *Lambillionea* 108:323–328
- Serrano ARM (2010) A new species of the genus *Perigona* Castelnau, 1835 and new records of tiger and ground beetles for S. Tomé e Príncipe islands (Coleoptera: Caraboidea, Cicindelidae, Carabidae) addendum. *Lambillionea* 110:136
- Smith RR, Short AEZ (2020) Review of the genus *Chasmogenus* sharp, 1882 of northeastern South America with an emphasis on Venezuela, Suriname, and Guyana (Coleoptera, Hydrophilidae, Acidocerinae). *ZooKeys* 934:25–79
- Tavakilian GL, Chevillotte H (2020) Base de données Titan sur les cérambycides ou longicornes. Available via <http://titan.gbif.fr/index.html>. Accessed 8 Oct 2020
- Tordo GC (1956) Entomofauna da Guiné Portuguesa e S. Tomé e Príncipe (Contribuição para o seu conhecimento): Coleópteros e hemípteros. *Boletim Cultural da Guiné Portuguesa* XI 44:107–120
- Viette P (1956) Mission entomologique dans les îles du Golfe de Guinée (Príncipe, São Tomé, Annobón). *Bulletin de la Société Entomologique de France* 61:200–208
- Villiers A (1957) Mission du Muséum dans les îles du Golfe de Guinée, Entomologie: III Coleoptera Cerambycidae. *Bulletin de la Société Entomologique de France* 62:147–149
- Zuzarte AJGS, Serrano ARM (1996a) Sobre a fauna terrestre e ribeirinha da República Democrática de São Tomé e Príncipe. Cerambycídeos (Coleoptera Cerambycidae) da ilha de São Tomé. *Boletim da Sociedade Portuguesa de Entomologia* 163:173–184
- Zuzarte AJGS, Serrano ARM (1996b) Contribuição para o conhecimento dos cerambycídeos (Coleoptera, Cerambycidae) da Guiné-Bissau e de São Tomé e Príncipe. *Boletim da Sociedade Portuguesa de Entomologia* 165:201–210

### ***Further Reading cited in Appendix***

- Antoine P (2005) A propos de *Clastocnemis quadrimaculatus* (Afzelius, 1817) (Coleoptera, Cetoniidae, Trechiinae). *Entomologia Africana* 10(1):2–7
- Aurivillius C (1910) Neue oder wenig bekannte Coleoptera Longicornia II. *Arkiv för Zoologi* (Uppsala & Stockholm) 7:143–186
- Aurivillius C (1928) Neue Cerambyciden aus dem Somaliland und Abessinien in Museo Civico di Storia Naturale in Genova. *Annali del Museo Civico di Storia Naturale Giacomo Doria, Genova* 52:473–486
- Bänninger M (1937) Zwei neue afrikanische *Scarites*-Arten (Col.). *Annali del Museo Civico di Storia Naturale di Genova* 59:476–479
- Basilewsky P (1949) Carabidae africains nouveaux des Musées de Gênes et de Milan. *Annali del Museo Civico di Storia Naturale di Genova* 64:1–11
- Basilewsky P (1953) Un genre nouveau d'anchoméniens de l'île de San Thomé. *Bulletin et Annales de la Société Entomologique de Belgique* 89(11–12):272–277
- Basilewsky P (1957) Coléoptères Carabidae africains nouveaux VIII. *Revue de Zoologie et de Botanique Africaines* 56(1–2):33–40

- Basilewsky P (1958) Mission du Muséum dans les îles du Golfe de Guinée. Entomologie: VII Coleoptera Carabidae. Bulletin de la Société Entomologique de France 63:96–98
- Basilewsky P (1989) Revision of African Perigonini (Coleoptera, Carabidae). Revue de Zoologie Africaine 103:413–452
- Beaver R, Löyttyniemi K (1985) The platypodid ambrosia beetles of Zambia (Coleoptera: Platypodidae). Revue de Zoologie Africaine 99:113–134
- Berlioz J (1919) Description d'une espèce nouvelle d'eumolpide (Col. Chrysomel.) nuisible aux cacaoyers de l'île San Thomé. Bulletin de la Société Entomologique de France 1919:88–89
- Biondi M, D'Alessandro P (2015) Revision of the Afrotropical genus *Notomela* Jacoby, 1899 with description of *N. joliveti* sp. n. from Príncipe Island (Coleoptera, Chrysomelidae, Galerucinae, Alticini). ZooKeys 547:63–74
- Bomans HE (1992) Les coléoptères Lucanidae de l'île Príncipe (78<sup>e</sup> contribution à l'étude des coléoptères lucanides). Lambillionia 92:251–254
- Borovec R, Anderson R (2021) *Saotomia tuberculata*, a new genus and species of Peritelini (Coleoptera; Curculionidae; Entiminae) from São Tomé, West Africa. Zootaxa 4966:571–577
- Bremer HJ, Lillig M (2014) World catalogue of Amarygmini, Rhysopaussini and Falsocossyphini (Coleoptera; Tenebrionidae). Mitteilungen der Münchner Entomologischen Gesellschaft 104 (Suppl):3–176
- Breuning S (1935) Études sur les lamiaires (Coléop. Cerambycidae). Deuxième Tribu: Sternotomini Thomson. Novitates Entomologicae Supplément 3:99–156
- Breuning S (1936) Études sur les lamiaires (Coléop. Cerambycidae). Troisième Tribu: Prospocerini Thomson. Novitates Entomologicae Supplément 3:157–230
- Breuning S (1938) Novae species *Cerambycidarum* VI. In: Festschrift zum 60. geburtstage von Professor Dr. Embrik Strand. Riga, pp 180–392.
- Breuning S (1940) Novae species *Cerambycidarum* IX. Folia Zoologica et Hydrobiologica, Riga 10:115–214
- Breuning S (1943) Novae species *Cerambycidarum* XII. Folia Zoologica et Hydrobiologica, Riga 12:12–66
- Breuning S (1947) Nouvelles formes de longicornes du Musée de Stockholm. Arkiv för Zoologi, Uppsala 39A:1–68
- Breuning S (1955) Lamières nouveaux de la collection du Museo Civico di Storia Naturale - Genova (Coleoptera, Cerambycidae). Annali del Museo Civico di Storia Naturale di Genova 68: 40–44
- Breuning S (1956) Longicornes nouveaux de la collection du Museo Civico di Storia Naturale - Genova (Coleoptera, Cerambycidae). Annali del Museo Civico di Storia Naturale di Genova 68: 244–258
- Breuning S (1958) Revision der Gattung *Glenea* Newm. (Col. Ceramb.) (3. Fortsetzung und Schluß). Entomologische Arbeiten aus dem Museum G Frey 9:804–907
- Breuning S (1970) Nouveaux Lamières africains [Col. Cerambycidae] des collections du Muséum de Paris. Bulletin de l'Institut Fondamental d'Afrique Noire, Dakar, Série A 32:718–759
- Calabresi E (1920) Brentidi raccolti da Leonardo Fea nell'Africa occidentale. Annali del Museo Civico di Storia Naturale di Genova Series 3 9(49):16–45
- Castel-Branco AJF (1965) A broca do café em S. Tomé (*Stephanoderes hampei* Ferrari). Garcia de Orta 17(1):97–106
- Castel-Branco AJF (1966) *Pachymerus lacerdae* Chevrolat, espèce nova (Ins. Col. Bruchidae) para a fauna da ilha de S. Tomé. Garcia de Orta 13(2):179–184
- Cristóvão J, Lyal C (2018) Anchonini in Africa: New species and genus confirming a Transatlantic distribution (Coleoptera: Curculionidae: Molytinae). Diversity 10:82
- Damoiseau (1963) Nouveaux Brentidae (Coleoptera) du Musée de Gênes. Annali del Museo Civico di Storia Naturale di Genova 73:109–120
- Dechambre R-P (1983) Contribution à l'étude du peuplement des îles du Golfe de Guinée. Coléoptères Dynastidae Phileurinae de l'île Príncipe. Revue Française d'Entomologie 5:110–112

- Delahaye N, Juhel P (2018) Description d'une nouvelle sous-espèce de Callichromatini de São Tomé (Cerambycidae, Cerambycinae, Callichromatini). *Les Cahiers Magellanes* 31:59–62
- d'Orbigny H (1905) Onthophagides provenant du voyage de M. L. Fea dans l'Afrique occidentale. *Annali del Museo Civico di Storia Naturale di Genova, Series 3* 1(41):417–448
- d'Orbigny H (1913) Synopsis des onthophagides d'Afrique. *Annales de la Société Entomologique de France* 82:1–742
- Fagel G (1953) Contribution à la connaissance des Staphylinidae. XXV - Essai de classification des *Stilicis* africains. *Bulletin et Annales de la Société Entomologique de Belgique* 89(11–12): 282–299
- Fagel G (1958) Sur quelques Osoriinae du Golfe de Guinée. *Revue Française d'Entomologie* 25: 26–32
- Fagel G (1966) Contribution à la connaissance des Staphylinidae XCV. *Les Paederus* ethiopiens. *Revue de Zoologie et de Botanique Africaines* 73:255–272
- Fagel G (1977) Contribution à l'étude des Coléoptères Staphylinidae. Révision des Cryptobiina africains. *Annales du Musée Royal de l'Afrique Centrale Tervuren Série 8. Sciences Zoologiques* 219:1–110
- Fauvel A (1903) Staphylinidae recueillis au Cameroun par le Dr. Yngve Sjöstedt. *Arkiv för Zoologi* 1:235–244
- Ferreira RN (2014) New records of Staphylinidae (Coleoptera) from São Tomé and Príncipe (Western Africa). *Arquivos Entomológicos* 10:93–96
- Frolov AV, Akhmetova LA (2015) Rediscovery of the enigmatic *Stenosternus costatus* Karsch (Coleoptera: Scarabaeidae: Orphninae) from São Tomé Island. *Zootaxa* 4007:440–444
- Gebien H (1914) Tenebrionidae. In: Friedrichs A (ed) *Wissenschaftliche Ergebnisse der zweiten deutschen Zentral-Afrika-Expedition, 1910–1911*. Klinkhardt & Biermann, Leipzig, pp 42–62
- Gestro R (1902) Contribuzioni allo studio dei Paussidi. *Bollettino della Società Entomologica Italiana* 34:33–36
- Gestro R (1905) Material per lo studio delle Hispidae. XXIX. Viaggio di Leonardo Fea nell'Africa Occidentale. Hispidae. *Annali del Museo Civico di Storia Naturale di Genova* Série 3(42): 501–557
- Girard C (2017) Catalogue commenté des Coléoptères Elateridae d'Afrique subsaharienne (Cardiophorinae exclus). *Mémoires de la Société Entomologique de France* 10:1–403
- Gomes Alves ML (1965) Passalídeos (Ins. Col.) da África portuguesa. *Garcia de Orta* 13(2): 167–172
- Gomes Alves ML (1973) Contribuição para o conhecimento dos Coccinélídeos (Ins. Col.) do Ultramar Português. *Memórias da Junta de Investigações do Ultramar, 2ª Série* 58: 45–97.
- Gomes Alves ML, Castel-Branco A (1962) Una espécie nova de *Coccinela* entomófaga da ilha do Príncipe. *Garcia de Orta* 10:643–646
- Gomy Y (2004) Contribution à la connaissance des Histeridae corticoles de l'île de São Tomé (Insecta, Coleoptera). *Il Naturalista Valtellinese - Atti del Museo Civico di Storia Naturale di Morbegno* 15:21–27
- Gordon RD (1987) A catalogue of the Crotch collection of Coccinellidae (Coleoptera). *Occasional Papers on Systematic Entomology* 3:1–46
- Griffini A (1906) Lucanidi raccolti da Leonardo Fea nell'Africa Occidentale. *Annali del Museo Civico di Storia Naturale di Genova* Série 3 2(42):135–148
- Harold E (1879) I. Bericht über die von Herren A. v. Homeyer und P. Pogge in Angola und im Lunda-Reiche gesammelten Coleopteren. *Coleopterologische Hefte* 16:1–224
- Hounkpati K, McHugh J, Niang AA, Goergen G (2020) Documenting museum records of West African Coccinellidae (Coleoptera) in Benin and Senegal. *Biodiversity Data Journal* 8:e47340
- Janson OE (1907) List of the Cetoniidae collected by the late Leonardo Fea in West Africa. *Annali del Museo Civico di Storia Naturale di Genova* Series 3 3(43):326–338
- Jordan K (1903) Some new Cerambycidae collected by Albert Mocquerys on the island of St. Thomé, Gulf of Guinea, West Africa. *Novitates Zoologicae* 10:192–196

- Jordan K (1911) Some new Anthribidae from the island of St. Thomé, bay of Benin. *Novitates Zoologicae* 18:90–91
- Jordan K (1920) Anthribidae collected by Signor L. Fea on the islands of Fernando Po, S. Thomé and Príncipe. *Annali del Museo Civico di Storia Naturale di Genova Series 3* 9(49):46–56
- Kaden O (1930) *Relatório Anual de 1929, Seccão de Fitopatologia. Direcção dos Serviços de Agricultura, Imprensa Nacional, São Tomé e Príncipe*, p 56
- Kerremans C (1906) Buprestides recueillis par Mr. L. Fea dans l’Afrique occidentale. *Annali del Museo Civico di Storia Naturale di Genova Series 3* 2(42):406–411
- Kerremans C (1914) *Monographie des buprestides*. J. Janssens, Brussels
- Krell F-T (1994) Phylogenetisch-systematische Revision des Genus *Temmorhynchus* Hope, 1837 (Coleoptera: Scarabaeoidea: Melolonthidae: Dynastinae: Pentodontini) 2. Teil: Bestimmungstabelle, Katalog, Bibliographie, Gazetteer und Material-Listen. *Beiträge zur Entomologie* 44(1):83–155
- Kuijten PJ (1983) Revision of the genus *Hybosorus* Macleay (Coleoptera: Scarabaeidae, Hybosorinae). *Zoologische Verhandlungen* 203:3–49
- Laboissière MV (1920) Description d’une espèce nouvelle de *Nisotra* (Halticini) de l’île de San Thomé [Col. Chrysomelidae]. *Bulletin du Museum National d’Histoire Naturelle* 23:31–32
- Lacroix M (2008) Contribution à la connaissance des Melolonthinae africains, I. Nouveaux genres et nouvelles espèces du complexe *Apogonia* Kirby, 1819 (Coleoptera, Melolonthidae). *Coléoptères* 14:67–98
- Lameere AAL (1912) Révision des prionides. Vingt-deuxième mémoire - Addenda et corrigenda. *Mémoires de la Société Entomologique de Belgique* 21:113–188
- Lassalle B, Roux P (2021) Contribution à la connaissance des *Pheropsophus* Solier, 1833 africains (Coleoptera, Caraboidea, Brachinidae). *Faunitaxys* 9(2):1–12
- Lefkovich LP (1962) A revision of African Laemphloeinae (Coleoptera: Cucujidae). *Bulletin of the British Museum (Natural History) Entomology* 12(4):167–245
- Lepesme P (1948) Longicornes de Boukoko. *Agronomie Tropicale* 3:282–286
- Lepesme P, Breuning S (1950) Les Tragocephalini de l’Ouest africain. *Longicornia (Paris)* 1:423–506
- Lesne P (1906) Viaggio di Leonardo Fea nell’Africa occidentale. Bostrychidae. *Annali del Museo Civico di Storia Naturale di Genova Series 3* 2(42):412–417
- Lewis G (1900) On new species of Histeridae and notices of others. *Ann Mag Nat Hist Series 7* 6: 265–290
- Lewis G (1906) Viaggio di Leonardo Fea nell’Africa occidentale (Histeridae). *Annali del Museo Civico di Storia Naturale di Genova Series 3* 2(42):398–405
- Matsumoto K (2019) Description of a new subspecies of *Prosopocoilus antilopus* (Swederus, 1787) (Coleoptera: Lucanidae) from Annobón island, Gulf of Guinea. *Zootaxa* 4559:581–586
- Medler JT (1980) Insects of Nigeria. Checklist and bibliography. *Memoirs of the American Entomological Institute* 30:1–919
- Moser J (1904) Neue afrikanische Cetoniden-Arten. *Berliner Entomologische Zeitschrift* 48:59–70
- Nýlander U (2000) Description of a new species of the genus *Acanthophorus* Serville, 1832 (subg. *Ceratocentrus* Aurivillius, 1903) from Príncipe Isl. African region. (Coleoptera, Cerambycidae, Prioninae). *Lambillionea* 100:614–616
- Paulian R (1941) Coprophaga africana: Deuxième note. Revision des *Bolboceras* africains. *Revue de Zoologie et de Botanique Africaines* 35:1–71
- Paulian R (1949) Les scarabéides africains du genre *Paraphytus* Harold [Col.]. *Bulletin de la Société Entomologique de France* 54:117–119
- Pic M (1916) Notes et descriptions abrégées diverses. *Mélanges Exotico-entomologiques* 17:1–31
- Pic M (1922) Nouveautés diverses. *Mélanges Exotico-entomologiques* 35:1–32
- Pic M (1926) Études sur les lycides. I. Lycides récoltés par L. Fea à Fernando Poo et îles avoisinantes. *Annali del Museo Civico di Storia Naturale di Genova* 52:116–129
- Pope RD (1961) Exploration du Parc National de la Garamba. Mission H. de Saeger. 25: Colydiidae (Coleoptera Clavicornia). *Institut des Parcs Nationaux du Congo Belge, Brussels*, p 115

- Régimbart M (1904) Dytiscidae et Gyrinidae recueillis par Mr. L. Fea en Afrique occidentale. *Annali del Museo Civico di Storia Naturale di Genova Series 3* 1(41):65–68
- Régimbart M (1907) Hydrophilides provenant du voyage de M. L. Fea dans l’Afrique Occidentale. *Annali del Museo Civico di Storia Naturale di Genova Series 3* 3(43):46–62
- Rigout J, Allard V (1992) Cetoniini 2. Les coléoptères du monde, Sciences Nat, Compiègne, p 100
- Ruzzier E (2015) Taxonomic considerations on the genus *Ophthalmoglipa* Franciscolo, 1952 (Coleoptera: Mordellidae) with description of two new species. *Zootaxa* 4059:364–370
- Schmidt M (1922) Die afrikanischen Callichrominen (Col. Ceramb.) nach systematischen, phylogenetischen und geographischen Gesichtspunkten. *Archiv für Naturgeschichte*, Berlin 88(6):61–232
- Sicard A (1911) Descriptions d’espèces et variétés nouvelles de coccinellides du Musée Civique de Gênes rapportées de l’Afrique occidentale par M. L. Fea. *Annali del Museo Civico di Storia Naturale di Genova Series 3* 5(45):282–292
- Sicard A (1920) Descriptions d’espèces et variétés nouvelles de coccinellides de São Tomé. *Bulletin de la Société Portugaise des Sciences Naturelles* 8:211–214
- Straneo SL (1940) Nuovi *Abacetus* dell’Africa Occidentale raccolti da L. Fea. *Annali del Museo Civico di Storia Naturale Giacomo Doria* 60:438–444
- Straneo SL (1941–1942) Revisione dei Caelostomini africani (Coleopt Carabid.). *Memorie della Società Entomologica Italiana* 20–21:21–164.
- Straneo SL (1943) Su alcuni carabidi del Museo Civico di Genova raccolti in Africa Occidentale da L. Fea. *Nota I. Annali del Museo Civico di Storia Naturale Giacomo Doria* 62:55–61
- Vargas Ferreira MA (1967) Os *Oryctes* em São Tomé. *Boletim Informativo, Brigada de Fomento Agro-Pecuário, São Tomé e Príncipe* 1:53–56
- Vesco JP, Guilbot R, Lachaume G (1999) Étude sur la possibilité d’implanter un élevage de papillons économiquement rentable sur l’île de São Tomé et un manuel simple d’élevage des lépidoptères. *Groupement Agreco G.E.I.E. – BDPA-SCETAGRI-SECA-CIRAD Forêt, São Tomé*, p 15.
- Wood SL, Bright DE Jr (1992) Subfamily Platypodinae. *Great Basin Naturalist. Memoirs* 13(11): 1113–1240
- Zoia S (2017) The Eumolpinae of São Thomé, Príncipe & Bioko islands from the collections of the Museo Civico di Storia Naturale “G Doria”, Genoa. *Annali del Museo Civico di Storia Naturale “G Doria”* 110:325–398

**Open Access** This chapter is licensed under the terms of the Creative Commons Attribution 4.0 International License (<http://creativecommons.org/licenses/by/4.0/>), which permits use, sharing, adaptation, distribution and reproduction in any medium or format, as long as you give appropriate credit to the original author(s) and the source, provide a link to the Creative Commons license and indicate if changes were made.

The images or other third party material in this chapter are included in the chapter’s Creative Commons license, unless indicated otherwise in a credit line to the material. If material is not included in the chapter’s Creative Commons license and your intended use is not permitted by statutory regulation or exceeds the permitted use, you will need to obtain permission directly from the copyright holder.

