



**HAL**  
open science

## A journey with type IX secretion system effectors: selection, transport, processing and activities

Maëlle Paillat, Ignacio Lunar Silva, Eric Cascales, Thierry Doan

### ► To cite this version:

Maëlle Paillat, Ignacio Lunar Silva, Eric Cascales, Thierry Doan. A journey with type IX secretion system effectors: selection, transport, processing and activities. *Microbiology*, 2023, 169 (4), 10.1099/mic.0.001320 . hal-04234754

**HAL Id: hal-04234754**

**<https://amu.hal.science/hal-04234754>**

Submitted on 10 Oct 2023

**HAL** is a multi-disciplinary open access archive for the deposit and dissemination of scientific research documents, whether they are published or not. The documents may come from teaching and research institutions in France or abroad, or from public or private research centers.

L'archive ouverte pluridisciplinaire **HAL**, est destinée au dépôt et à la diffusion de documents scientifiques de niveau recherche, publiés ou non, émanant des établissements d'enseignement et de recherche français ou étrangers, des laboratoires publics ou privés.



Distributed under a Creative Commons Attribution 4.0 International License

# A journey with type IX secretion system effectors: selection, transport, processing and activities

Maëlle Paillat, Ignacio Lunar Silva, Eric Cascales\* and Thierry Doan\*

## Abstract

The type IX secretion system (T9SS) is a multiprotein machine distributed in *Bacteroidota* and responsible for the secretion of various proteins across the outer membrane. Secreted effectors can be either delivered into the medium or anchored to the cell surface. The T9SS is composed of a transenvelope complex consisting of proton-motive force-dependent motors connected to a membrane-associated ring and outer membrane translocons, and a cell-surface anchoring complex that processes effectors once translocated. The T9SS is involved in pathogenesis, metal acquisition, carbohydrate degradation, S-layer biogenesis and gliding motility. The broad spectrum of functions is linked to a highly versatile repertoire of effectors including metallophores, enzymes, toxins and adhesins, that all possess specific signatures to be recruited and transported by the apparatus. This review summarizes the current knowledge on T9SS substrate secretion signals, transport, processing and activities.

## INTRODUCTION

The type IX secretion system (T9SS) is a modular protein transport machinery that is assembled into the cell envelope of Gram-negative bacteria of the phylum *Bacteroidota*, such as members of the genera *Flavobacterium*, *Porphyromonas*, *Cytophaga*, *Cellulophaga*, *Riemerella* and *Capnocytophaga*, with the exception of *Bacteroides* species [1–5]. The broad but strict distribution of T9SS genes within the phylum and the observation that T9SS conserved genes are scattered within the genomes suggest an ancient acquisition, probably in a common ancestor of *Bacteroidota* [6]. In these different species, the T9SS is used to secrete a very large repertoire of effectors or enzymes across the outer membrane in order to facilitate or sustain the lifestyle of the bacterium [6–10]. The T9SS is therefore involved in many processes such as virulence, S-layer formation, gliding motility, and biopolymer degradation and utilization [2, 11, 12]. Due to the use of these different processes as read-out to identify T9SS components, homologous genes have received distinct names in different bacterial species. Awaiting a unified nomenclature, we will use in this review the *Porphyromonas* and *Flavobacteria* names, which are the most widely used in the literature: Por for *Porphyromonas* secretion, Gld for *gliding* or Spr for *spreading*.

## T9SS ARCHITECTURE AND MECHANISM OF ACTION

The core subunits of the T9SS can be categorized into three subcomplexes: the PorLM/GldLM rotary motor, the PorKN/GldKN outer membrane-associated structure and the Sov/SprA translocon (Fig. 1) [1, 4, 5]. A number of additional subunits could be associated with these subcomplexes such as GldO and GldJ associated with the GldKN complex in *Flavobacterium*, and the PorV outer membrane  $\beta$ -barrel and Plug proteins that bind the Sov/SprA translocon [5, 6].

### The rotary motor

The PorL/GldL and PorM/GldM inner membrane proteins assemble an L:M complex of 5:2 stoichiometry [13–15]. The PorL/GldL protein comprises two transmembrane helices (TMHs) and a cytoplasmic domain, whereas the PorM/GldM protein is a bitopic protein with a single N-terminal TMH of in-to-out topology followed by a large periplasmic domain complex [13]. The

Received 23 February 2023; Accepted 14 March 2023; Published 12 April 2023

**Author affiliations:** <sup>1</sup>Laboratoire d'Ingénierie des Systèmes Macromoléculaires (LISM), Institut de Microbiologie, Bioénergies et Biotechnologie (IM2B), Aix-Marseille Université – CNRS, UMR 7255, Marseille, France.

**\*Correspondence:** Thierry Doan, tdoan@imm.cnrs.fr; Eric Cascales, cascales@imm.cnrs.fr

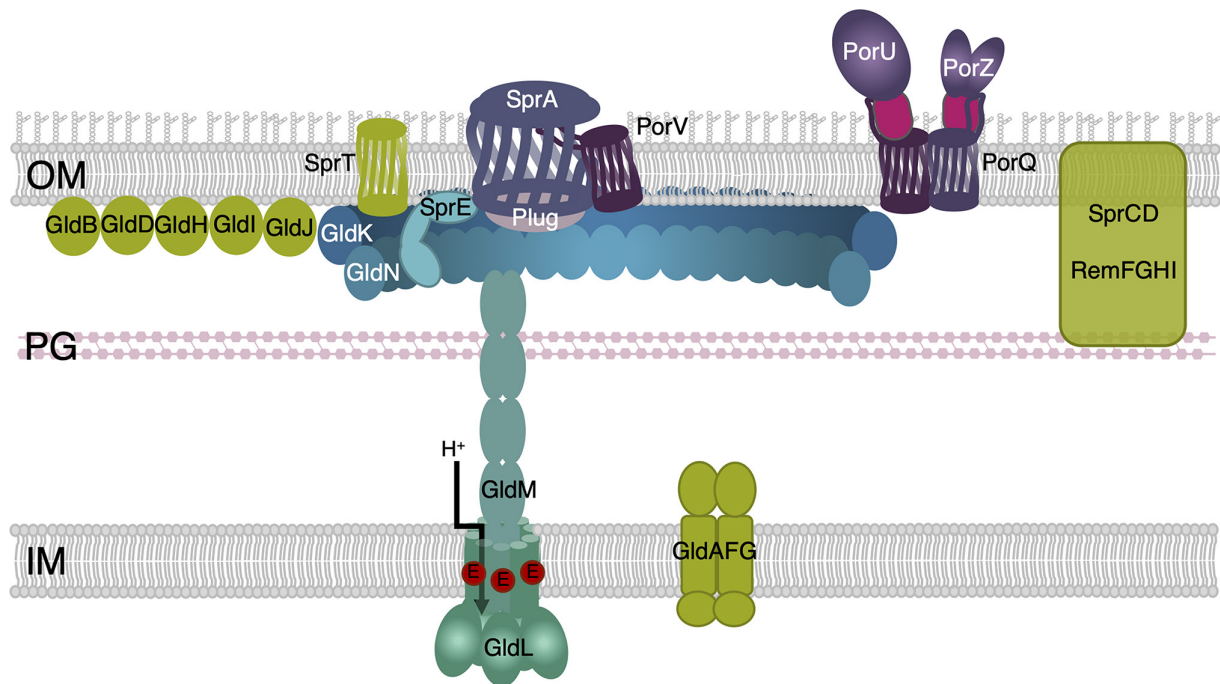
**Keywords:** protein transport; secretion signal; effectors; toxins; type IX secretion; gliding motility.

**Abbreviations:** A-LPS, anionic lipopolysaccharide; CTD, C-terminal domain; OM, outer membrane; PMF, proton motive force; TMH, transmembrane helix; T9SS, type IX secretion system.

001320 © 2023 The Authors



This is an open-access article distributed under the terms of the Creative Commons Attribution License. The Microbiology Society waived the open access fees for this article.



**Fig. 1.** Schematic representation of the type IX secretion system (T9SS) and of associated proteins and modules. The major subunits of the T9SS are schematized (shade of blue), highlighting the LM rotary motor, KN ring, the SprE/PorW lipoprotein and the Sov/SprA translocon associated with Plug (grey). For the rotary motor, the glutamate residue that is thought to harvest the proton ( $H^+$ ) gradient during motor function is shown in red. The PorV  $\beta$ -barrel and the PorQUZ attachment complex are shown in purple. Additional modules associated with type IX secretion or gliding motility are depicted in green. IM, inner membrane; PG, peptidoglycan; OM, outer membrane.

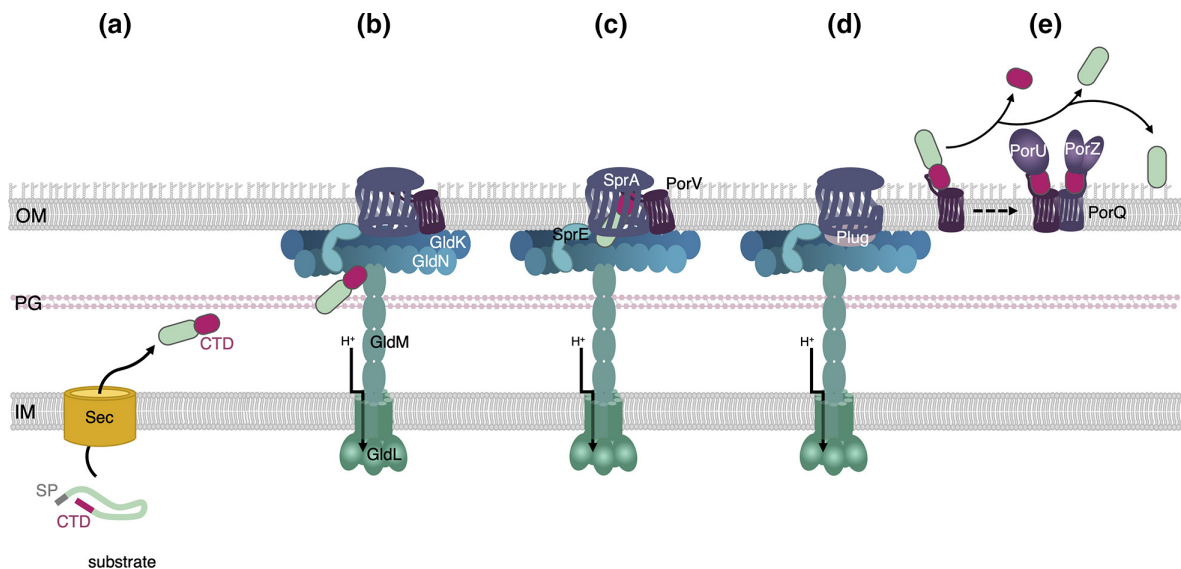
structures of the PorM/GldM periplasmic regions have been resolved: the two monomers are tightly associated and are organized in a four-domain stick shape, with a helical D1 domain and three Ig-like D2–D4 domains which present swapping  $\beta$ -strands between dimers in domains D2 and D3 [16, 17]. In the inner membrane, the ten helices of the PorL/GldL pentamer wrap the two helices of PorM/GldM (Fig. 1) [14, 15]. The structures of the inner membrane-associated portion of the LM complexes from various *Bacteroidota* T9SS have been reported, revealing a composition, organization and structure homologous to proton-motive force (PMF)-driven motors such as MotAB, ExbBD, TolQR and AglQRS, involved in energizing flagellum rotation, TonB-dependent iron and nutrient uptake, cell envelope stability or *Myxococcus* gliding motility, respectively [14, 15]. Indeed, *Flavobacterium* gliding motility is energized by the PMF, and more specifically by the proton gradient [8, 14, 18, 19]. Similarly to the other bacterial PMF-dependent molecular motors, a conserved acidic residue located in the PorL/GldL second TMH region is critical for function [14, 19]. It is thus proposed that the T9SS LM complex harvests and transduces the energy of the inner membrane proton gradient to drive protein transport through the T9SS [14, 19]. While the mechanism is not fully understood, it probably involves PMF-responsive conformational changes in the PorM/GldM periplasmic domain that may have downstream repercussions on the outer membrane (OM)-associated complex [19, 20].

### The OM-associated complex

The OM-associated complex is minimally composed of the PorK/GldK and PorN/GldN proteins [7, 13, 21]. In some species such as *Flavobacterium johnsoniae*, two additional subunits, GldJ (paralogue of GldK) and GldO (paralogue of GldN), also participate in complex formation [22–24]. PorK/GldK is an OM lipoprotein whereas PorN/GldN locates in the periplasm [13, 21]. In *Porphyromonas*, the PorK and PorN proteins interact and assemble a 36-mer, 50 nm large ring [20, 21]. This ring is located underneath the OM and is connected to 18 PorLM complexes via interactions between PorN and the PorM D4 domains, building an overall birdcage-like structure in the periplasm [13, 16, 20, 25]. It has been proposed that PorM conformational changes in response to the PMF induce the rotation of the PorKN ring [19, 20].

### The translocon

The translocon comprises a very large 36-strand  $\beta$ -barrel protein, Sov/SprA [26]. The barrel is closed at the extracellular side by exposed folded inserts and loops connecting the  $\beta$ -strands [26]. *Flavobacterium* SprA has been purified and imaged associated with the PorV  $\beta$ -barrel or to the Plug protein, probably reflecting two different states of the translocon activity [26]. The Plug



**Fig. 2.** Schematic representation of the T9SS substrate transport pathway. The substrate, which possesses a signal peptide (SP), is exported to the periplasm via the Sec machinery (a). Once in the periplasm, the substrate folds, revealing a C-terminal domain (CTD, pink) that is recognized by the T9SS (b). The substrate is conveyed to the Sov/SprA translocon in the open conformation (c) where it is transferred to the PorQUZ shuttle (d) and transported to the processing/attachment PorQUZ complex. The CTD is then cleaved by the PorU sortase and the protein is either released in the medium or anchored to the cell surface (e).

protein associates and obstructs the periplasmic entrance of the translocon. In this conformation, the translocon presents a lateral aperture, which is penetrated by loops of the PorV  $\beta$ -barrel in the second conformation [26]. The current model proposes that alternating Plug and PorV association and dissociation may regulate effector transit through the translocon [26–28]. Cryotomography imaging suggested that eight translocons are confined within the OM-associated ring PorKN ring [20] and are probably connected to it by PorW/SprE lipoproteins [29].

### Additional modules

In addition to the core components described above, the T9SS can associate with other modules that confer specific functions (Fig. 1). In many species, a cell surface attachment module responsible for effector processing consists of the PorV and PorQ  $\beta$ -barrels, the PorZ protein that provides anionic lipopolysaccharide (A-LPS) to the PorU peptidase, which cleaves the C-terminal domain of effectors and eventually attaches them to the A-LPS [27, 30–35]. Other components and modules, such as the GldBDHI proteins and the ABC transporter-like GldAFG module, have no clear function but appear critical for gliding motility and indirectly for secretion through GldK stabilization [22, 24, 36–39]. The PorP/SprF proteins are PorV-like  $\beta$ -barrels, and can be deployed for the transport of specific substrates, notably for gliding adhesins. Finally, SprCD and Rem proteins are associated with gliding motility in *Flavobacteria* [40–42].

### T9SS: a two-step secretion mechanism

The overall mechanism of effector transport by the T9SS is not well understood but a model has been proposed based on recent findings on the apparatus. Type IX secretion is a two-step mechanism: all T9SS effectors possess an N-terminal Sec-dependent signal peptide and are thus exported from the cytoplasm to the periplasm by the Sec translocon in an unfolded conformation (Fig. 2a). It is proposed that the effectors fold in the periplasm prior to their recruitment to the T9SS. In the case of effectors with proteolytic activities, such as the *Porphyromonas gingivalis* gingipains, they fold as inactive zymogens in the periplasm, in which an N-terminal prodomain inhibits the enzymatic activity [43–45]. The specific recognition and selection of T9SS effectors is ensured by the presence of a C-terminal domain (CTD or T9SS-CTD) that serves as secretion signal [46]. While it is not known how the effectors engage the T9SS, they may bind to the OM-associated ring (Fig. 2b). The PorM/GldM conformational changes in response to PMF could induce rotation of the KN ring and thus distribute the effectors to the Sov/SprA translocons (Fig. 2c). Once inside the translocon, they may interact with the penetrating loops of the associated PorV  $\beta$ -barrel, which is thought to extract and shuttle them to the PorQUZ attachment complex. With PorV gone, the translocon periplasmic entrance is obstructed by the Plug protein preventing non-specific periplasmic leakage (Fig. 2d). The secreted effectors are processed by PorU and either released into the medium or attached to the cell surface (Fig. 2e).

## T9SS EFFECTOR RECOGNITION AND SELECTION: THE CTD SECRETION SIGNAL

As mentioned above, substrates of the T9SS are recognized and recruited to the apparatus in the periplasm via a conserved C-terminal domain, the CTD. The T9SS-CTD is necessary and sufficient for secretion, as its fusion to heterologous proteins promotes their secretion in a T9SS-dependent manner [47–49].

### Conserved sequence signatures

CTD-containing proteins are widespread among but restricted to members of the phylum *Bacteroidota*. Moreover, with few exceptions, the distribution of proteins with T9SS-CTDs strictly correlates with the distribution of T9SS core components [48]. CTDs can be categorized into two distinct protein domain families: type A and type B CTDs. Analysis of 104 *Bacteroidota* genomes identified >3000 proteins with type A CTD and about 900 proteins with type B CTD [48]. In addition, some proteins secreted by the T9SS such as the ChiA chitinase have a T9SS-CTD recently classified as type C CTD [50], which differs in sequence from the type A or the type B families [48].

### Type A CTD

The type A CTD (pfam family PF18962, TIGR04183) is the most represented T9SS sorting signal [46–48, 51, 52]. A sequence alignment of type A CTDs from diverse *Bacteroidota* revealed five motifs named A to E, from N- to C-terminal [46, 51]. While the A, B, D and E motifs are highly conserved, motif C is more degenerate [48, 51, 52] (Fig. 3a). The recent structures of the type A CTDs from the *P. gingivalis* RgpB, PorZ and Hbp35 substrates demonstrated a strict conservation of the fold, with a typical Ig-like organization comprising seven  $\beta$ -strands arranged as two anti-parallel  $\beta$  sheets [32, 53, 54]. In these structures, all the conserved residues of motifs A, B, D and E are exposed at the surface of the CTD and may therefore constitute binding interfaces to T9SS subunits (Fig. 3b). Mutagenesis of the CTD from the C-terminus revealed that the last 13 residues, and notably the conserved lysine residues of motif E, are required for efficient secretion [48, 52]. In addition, the last 22 amino acids of the HBP35 CTD, which encompass the D and E motifs, are sufficient to promote the heterologous secretion of GFP [47], questioning the importance of motifs A–C. One attractive explanation would be that motifs D and E are involved in crucial interactions with T9SS subunits, while other motifs are not required for secretion per se but participate in T9SS-CTD folding or facilitate substrate inspection at specific checkpoints along the type IX pathway. Indeed, motifs D and E were shown to regulate interactions with PorM and PorV, respectively [55], while an AlphaFold model of the PorV/RgpB-CTD complex suggested that the B, D and E motifs mediate contacts with the extracellular loops of PorV [28].

### Type B CTD

Much less is known about the type B CTDs (pfam family PF13585, TIGR04131). Based on sequence homology searches, substrates with a type B CTD are less abundant than the effectors with a type A CTD in genomes. They can even be totally absent in some T9SS<sup>+</sup> species [48, 49]. Transport of type B CTD substrates by the T9SS is still not understood but it is known that unlike the type A CTDs, their secretion does not require PorV, but specifically depends on a protein of the PorP/SprF family [49]. The genes encoding type B substrates and their cognate PorP/SprF proteins are usually clustered [49]. It is therefore proposed that PorP/SprF proteins are responsible for the anchoring of type B substrates to the cell surface [56]. In *P. gingivalis*, proper secretion of the unique type B substrate PG\_1035 also requires PorE [56], an OM protein that binds the peptidoglycan [57, 58]. Similarly to type A CTDs, a sequence alignment of type B CTDs highlights five conserved motifs within the last 100 residues (Fig. 3c). Intriguingly, fusion of type B CTDs to GFP suggested that this region is not sufficient, but that a larger region of >200 residues is required for secretion in the medium [49]. A second significant difference with type A CTDs is that type B CTDs studied so far are probably not cleaved [48, 56].

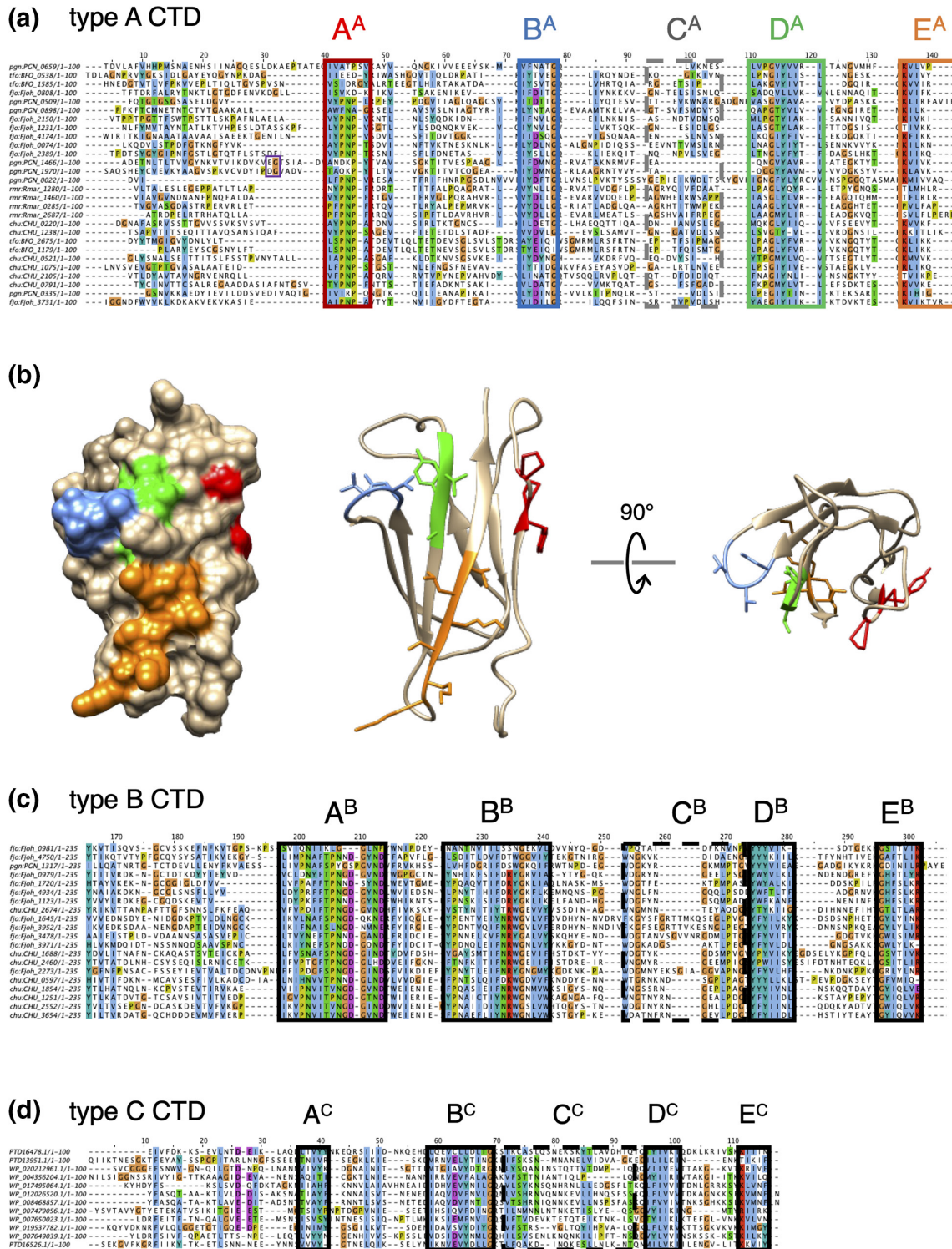
### Type C CTD

The recently identified type C CTD family (protein domain family cl41395) includes the *Flavobacterium johnsoniae* ChiA chitinase and three putative T9SS substrates of *Flavobacterium columnare* [48, 50]. Kulkarni et al. demonstrated that the C-terminal 100-aa region of ChiA, which also comprises conserved motifs (Fig. 3d), is required for efficient secretion of GFP [48].

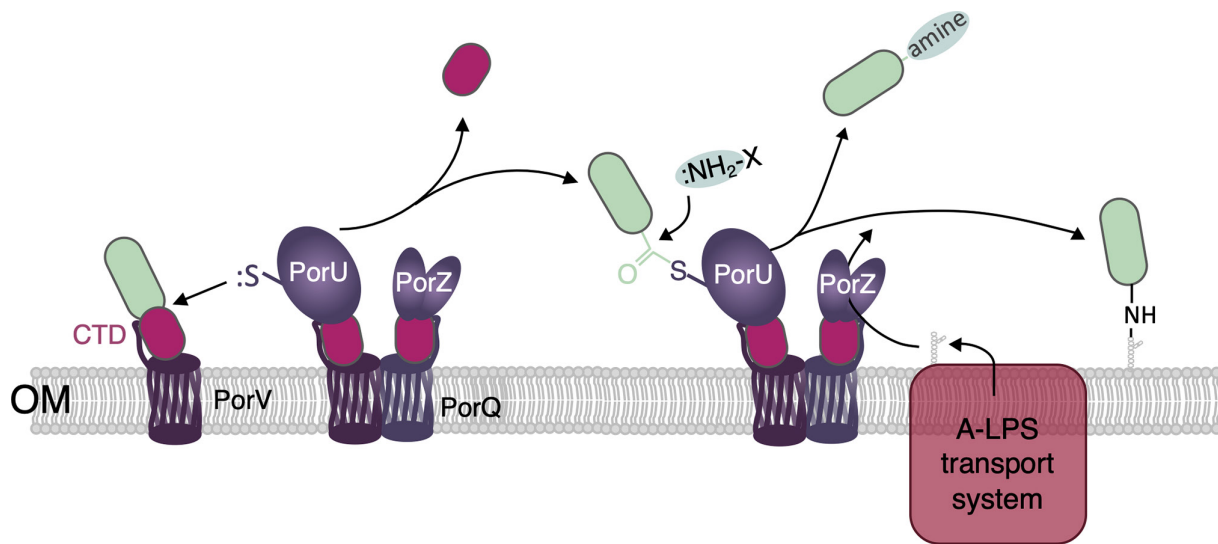
Although the identification of the T9SS-CTD as a sorting signal and the existence of different families of T9SS-CTDs with conserved motifs are now well established, many questions remain unanswered. How does the T9SS recognize different secretion signals? Does the secretion mechanism differ depending on the CTD family? Are these secretion signals linked to different functions or to different final localizations of the substrates?

## POST-TRANSLATIONAL MODIFICATIONS OF T9SS EFFECTORS

During their journey along the T9SS pathway, and even after exiting the SprA/Sov translocon to reach the cell surface, substrates can be modified. These post-translational modifications may target the substrates to a specific location and/or regulate substrate activity.



**Fig. 3.** T9SS secretion signals. Sequence alignments of randomly selected type A (a), type B (c) and type C (d) CTDs from various *Bacteroidetes* species using MUSCLE [126] and edited using Jalview [127]. Residues with similar functional side-chains are shown in colour (blue, hydrophobic residue; orange, glycine; purple, negatively charged residue; red, positively charged residue; green, serine and threonine; yellow, proline). The different conserved motifs are framed. For type A CTDs, the residues upstream and downstream from the cleavage site, when experimentally validated, are framed in purple. (b) Surface representation (left) and ribbon representation (right) of the structure of the type A CTD from PorZ (PDB: 5M11 [50]). The A, B, D and E motifs are shown in colour [red, blue, green and orange, respectively; same colour as the frames in (a) and with sticked side-chains in the ribbon representation.



**Fig. 4.** T9SS effector processing by the PorQUZ attachment complex. The T9SS effector is conveyed by the PorV shuttle to the PorQUZ complex. The PorU proteolytic domain cleaves the CTD, forming a thioester-bound complex between PorU and the processed substrate. The CTD is then either released in the medium or attached to the A-LPS after the nucleophilic attack of the free amino groups of primary amines, amino acids, short peptides or A-LPS. The A-LPS is synthesized by the Wba/Vim pathway and transported to PorU by the LPS transport machinery (pink) and PorZ.

#### A sortase-like mechanism for T9SS-CTD cleavage and attachment

A common feature of T9SS-dependent secretion is the anchoring of substrates to A-LPS at the cell surface. The current model proposes that after their translocation across the OM, substrates are shuttled by PorV to the PorQUZ attachment complex [27, 28] where they are processed by the multidomain PorU protein [31, 46] (Fig. 4). *P. gingivalis* PorU is a cysteine proteinase with a Cys/His catalytic dyad that cleaves the CTD at a T/E/D/N | G/A/S motif [31, 46] (Fig. 3a). This proteolysis is followed by a transesterification reaction that occurs between the last residue of the substrate processed form and the amine group of the 2-*N*-seryl, 3-*N*-acetylglucuronamide sugar of A-LPS synthesized by the Wbp/Vim pathway and provided by PorZ [31, 33, 34, 59] (Fig. 4). This process, reminiscent of the action of Gram-positive bacterial sortases that anchor proteins to the peptidoglycan, results in the attachment of T9SS substrates to the cell surface (Fig. 4). While the cleavage site has not been determined, PorU is also involved in removal of the N-terminal prodomain of gingipains in *P. gingivalis* [60].

Interestingly, PorU and PorZ are also CTD proteins and are thus T9SS substrates themselves; however, their CTDs have not been processed [30–33]. A recent study revealed that the PorU peptidase activity is inhibited upon dimerization [34]. Once a new PorU is shuttled to the attachment complex, a  $\beta$ -hairpin from one PorU monomer binds and inhibits the proteolytic domain of the second monomer [34]. Hence the PorU CTD is not removed and remains bound to PorV. The PorZ CTD domain is also retained to bind to the PorQ outer membrane  $\beta$ -barrel protein [27, 32, 35]. Although it is not yet known how the PorZ CTD remains uncleaved, one may hypothesize that specific handling of T9SS-CTD substrates by cognate PorV-like  $\beta$ -barrels protects the CTD from cleavage. This could be the case for PorZ/PorQ, as well as for type B substrates with PorP/SprF-like proteins.

It is noteworthy that not all T9SS substrates remained anchored to the cell surface, but a significant subset of them are freely released in the external milieu (Fig. 4). For these effectors, the CTD is removed by PorU and might be bound to amines or to the amine group of amino acids or short peptides present in the medium, instead of the amine group of A-LPS [31, 34] (Fig. 4). How PorU recognizes and selects effectors to be released or attached remains to be unravelled.

#### N-Glycosylation of the CTD is required for secretion in *Cytophaga hutchinsonii*

*Cytophaga* species rely on the T9SS to secrete enzymes and other effectors at the cell surface that degrade cellulose and other polysaccharidic biopolymers [61–63]. The CTD of the Cel9A cellulase is *N*-glycosylated in the periplasm by the PglA-like CHU\_3842 glycosyltransferase [64]. This modification, which occurs on the asparagine residue of a DXNXS motif, is necessary for Cel9A secretion and cell surface exposure [64, 65], suggesting that *N*-glycosylation may provide a means to regulate secretion of T9SS substrates. However, the physiological relevance of this modification and how it controls recognition and transport by the T9SS is not known.

**Table 1.** T9SS effector proteins

T9SS effector type	Activity or biological role	Examples and/or bacterial species	Reference(s)
<b>Proteases</b>			
Gingipains	Degradation of proteins from host tissue, processing of fimbriae subunits	<i>P. gingivalis</i> RgpB, Kgp	[68, 69, 71–76]
Subtilisin (serine protease)	Host complement evasion, and degradation of gelatin, fibrinogen, and LL-37	<i>Riemerella anatipestifer</i> SspA	[128]
Peptidase	Host tissue degradation	<i>F. columnare</i>	[50]
Peptidylarginine deiminase	Citrullination of host proteins	<i>P. gingivalis</i> PPAD	[81, 82]
Metallophosphoesterase	Phosphatase involved in virulence	<i>R. anatipestifer</i>	[129]
Endonuclease	Broad-range nuclease involved in virulence	<i>R. anatipestifer</i>	[130]
<b>CAZymes</b>			
Chitinase	Chitin degradation	<i>F. johnsoniae</i> ChiA	[9]
Cellulase	Cellulose degradation	<i>Cytophaga hutchinsonii</i> Cel9A	[61, 63]
Xylanase	Xylan degradation	<i>Roseithermus sacchariphilus</i>	[131]
Haem-binding protein	Haem uptake and utilization	<i>P. gingivalis</i> Hbp35	[120]
S-layer protein	Cell-surface protective layer	<i>Tannerella forsythia</i> TfsA and TfsB	[10, 83]
Adhesins	Gliding motility	<i>F. johnsoniae</i> SprB and RemA	[8, 88, 89]

### Phosphorylation of major *P. gingivalis* virulence factors may regulate their processing and secretion

Phosphorylation is a key post-translational modification regulating many processes, and type IX secretion is not an exception [66]. The phosphoproteome of *P. gingivalis* includes CTD-containing proteins such as gingipains, PPAD and RagB [66]. Substitution of the gingipain tyrosine residues that are phosphorylated strongly affected their secretion and processing [66], suggesting that phosphorylation of major *P. gingivalis* virulence factors may regulate their processing, activity and secretion. However, the kinase(s) responsible for the phosphorylation of these gingipains has not yet been identified.

### BIOLOGICAL FUNCTIONS OF T9SS EFFECTORS

At this point in the review, the reader may draw the conclusion that any periplasmic-targeted protein fused to a T9SS-CTD signal could be secreted by the T9SS since the CTD is necessary and sufficient for secretion through the OM. Thus, the repertoire of T9SS effectors is tremendous, ranging from very small proteins to several hundred kilodalton adhesins such as SprB in *F. johnsoniae*, and the functions supported by the T9SS are very diverse. Indeed, the average number and the variety of putative T9SS effectors (CTD-containing proteins) per genome is higher than with any other secretion system, with no fewer than 230 potential effectors encoded in the genome of *Fluviicola taffensis* [48]. Hence, we will not list all the activities of T9SS effectors in this review, but will rather focus on major functions: virulence, motility and polysaccharide utilization (Table 1).

### Virulence

Since *P. gingivalis* was shown to be a critical periodontal pathogen, research focusing on the mechanism of its virulence has received extensive attention. In 2010, the groups of McBride and Nakayama discovered the T9SS, which was initially called ‘Por secretion system’ (PorSS) [7]. Por refers to the porphyrin black pigment that accumulates at the surface of wild-type *P. gingivalis* colonies grown on blood agar [67]. This phenomenon relies on the activity of specific surface-anchored proteases called gingipains [68]. Mutations generating apigmented colonies mapped to genes responsible for gingipain secretion, cell surface exposition or maturation. Gingipains are Cys/His proteases that cleave at arginine (Rgp) or lysine (Kgp) residues [69, 70]. The gingipains are exposed at the cell surface and assemble an electron-dense layer at the surface of the bacterium [71]. The gingipains target host proteins such as matrix proteins (collagen, tight-junction proteins, etc.) [72, 73] and thus participate in the degradation of the periodontal tissues, allowing penetration of the bacterium across the epithelial barrier. Gingipains are also indirectly involved in adhesion to host cells by processing the pilin subunits of Mfa fimbriae and Type V pili [74–76]. In addition to gingipains, *P. gingivalis* uses its T9SS to secrete toxins that promote binding to host epithelial gingival cells, citrullination of proteins, and inhibition of the host immune response [76–80]. The T9SS-secreted protein PPAD (*Porphyromonas* peptidyl arginine deiminase) converts arginine to citrulline and induces aggregation and/or unfolding of target proteins by increasing their overall hydrophobicity [81]. PPAD is thus an important virulence factor responsible for the development of periodontitis and rheumatoid arthritis [78, 82]. Here, we will not expand further on the predominant role of T9SS effectors in the virulence of *P. gingivalis*,



which has been covered recently [1, 5, 80]. Other *Bacteroidota* pathogens secrete their virulence factors *via* their T9SS, such as the oral human pathogen *Tannerella forsythia*, the fish pathogens *Flavobacterium columnare* and *F. psychrophylum*, and the duck pathogen *Riemerella anatipestifer* [10, 46, 50, 83–86].

## Motility

T9SS research is also intimately linked to gliding motility. Many *Bacteroidota* members crawl over solid surfaces using cell surface adhesins [42, 87]. On motility plates, *F. johnsoniae* colonies expand until reaching the limits of the Petri dish. Elegant genetic screens based on the isolation of non-motile mutants led to the identification of the major adhesin SprB [88], the minor adhesin RemA [89], components of the T9SS [7, 23, 37, 90] and additional proteins grouped into gliding-specific modules [22, 36, 38–41, 91–93]. In *F. johnsoniae*, the major adhesin SprB moves rapidly at the cell surface, describing a closed helical loop from pole to pole [8, 11, 94]. Once attached to the substratum, the collective force generated by movement of SprB molecules is thought to act as a traction force on the substratum. As a result, the cell body is displaced in a screw-like rotational movement opposite to the direction of SprB bound to the substratum [8, 95]. Although this is reminiscent of the focal adhesion mechanism used by *Myxococcus xanthus* to glide [96], how SprB moves rapidly in a spiral motion on the cell surface remains mysterious. However, it is clear that this process is intimately entangled with type IX-dependent secretion.

The T9SS was shown to be responsible for the secretion of the motility adhesins, and hence inactivation of the T9SS prevents gliding motility [7, 88, 89, 97]. Interestingly, SprB possesses a type B CTD and requires SprF whereas RemA possesses a type A CTD and requires PorV for efficient secretion. How both types of effectors are targeted to the gliding machinery is not known. However, the situation is even more complicated. The activity of the T9SS molecular motor, GldLM, is not only required for SprB secretion but also for the movement of SprB at the cell surface [14, 19], suggesting that this proton-dependent motor also powers SprB dynamics [98, 99]. Shrivastava and Berg proposed a rack and pinion model to explain how the force provided by GldLM triggers SprB movement [100, 101]. In their model, the GldLM torque is transmitted to a ‘gearbox’ made of pinions that move a tread carrying the adhesins. Furthermore, a fixed helical track may guide this tread. The nature of the tread is still unknown but recent data suggest that GldJ may participate in the formation of this structure. First, the extreme C-terminal region of GldJ (8–13 aa) was dispensable for secretion via the T9SS but was required for SprB dynamics [24], suggesting a link between GldJ and the gliding apparatus. Indeed, GldJ is required for and present in filamentous structures underneath the OM that could serve as rails to guide a moving tread [102].

## Biopolymer degradation and utilization

Many *Bacteroidota* from *Flavobacterium*, *Cytophaga* and *Cellulophaga* and many other genera are environmental bacteria from diverse ecological niches [12, 103]. They use their T9SSs to secrete biopolymer-degrading enzymes, such as cellulases that degrade cellulose, the main component of the plant cell wall, agarases that degrade algal agarose and chitinases that degrade chitin, a structural component of molluscs, insects, crustaceans and fungi [9, 62, 63, 104–106]. The secretion of polysaccharide-degradation enzymes is not restricted to environmental strains, as many gut commensal *Bacteroidota* also secrete such enzymes via the T9SS [105, 107]. These activities provide nutrients and allow bacteria to establish themselves in their niches [108, 109].

## S-layer formation

The S-layer is an additional structure surrounding some bacteria and archaea [110–112]. In Gram-negative bacteria, the S-layer is made of glycoproteins attached to the LPS and confers protection and resistance to mechanical stress and external aggressions [110, 113, 114]. In *Tannerella forsythia*, the T9SS secretes two glycoproteins, TfsA and TfsB, that self-assemble to form a two-dimensional crystalline S-layer lattice that covers the entire cell [10, 83]. TfsA and TfsB are O-glycosylated by addition of a branched dekasaccharide [115]. In T9SS mutants, TfsA and TfsB remain sequestered in the periplasm but are O-glycosylated, demonstrating that post-translational modifications and secretion are uncoupled [10]. By being involved in the adhesion to and invasion of gingival epithelial cells and in biofilm formation on mucin, the TfsAB S-layer plays a key role in *T. forsythia* virulence [116–118].

## Haem acquisition

Many bacterial species require haem as a source of iron for their survival and, in some cases, to establish an infection. The *P. gingivalis* T9SS deploys the Hbp35 haem-binding protein to capture haem from the environment or from host haem-containing proteins [47, 119, 120]. In addition to *P. gingivalis* gingipains, proteases required for the degradation of haem proteins are also secreted through the T9SS in *Prevotella intermedia* and *T. forsythia* [121, 122].

## Is there much to discover about T9SS effector functions?

Because most T9SS research has focused on a few model bacteria, only a tiny fraction of the huge T9SS effector repertoire has been identified and characterized. This leaves many possible areas to prospect, and notably the emerging role of the T9SS

in the interplay between *Bacteroidota* species and their hosts. For example, recent evidence suggest that the T9SS is involved in symbiotic or pathogenic relationships of marine *Bacteroidota* with microalgae, such as for the interaction of *Dyadobacter* with *Micrasterias radians* [123–125].

While the field has made significant advances in recent years, many aspects of the T9SS remain to be clarified. In addition to a better understanding of the composition and architecture of the secretion apparatus itself, the translocation pathway of effectors from the periplasm to the cell exterior needs to be deciphered. How are these effectors recognized and selected, and what are the hierarchical contacts during their transport through the T9SS? It is still unclear at which stage of the translocation pathway the effectors acquire their definitive folding. Many questions also remain on how the effectors are post-translationally modified, and to what extent these modifications impact their secretion and activities. Finally, how the additional modules are connected to the T9SS and how they provide new functions are important questions to address. Using multidisciplinary approaches and novel technologies, future efforts will probably provide valuable insights and will pave the way to elucidating the mechanism of transport and the versatility of effector activities.

#### Funding information

Work on the T9SS in our laboratory is supported by the CNRS, the Aix-Marseille Université and by grants from the Agence Nationale de la Recherche (ANR-15-CE11-0019 and ANR-20-CE11-0011), from the Institut National des Sciences Biologiques (INSB) of the CNRS (AAP Diversity of Biological Mechanisms), and from the Excellence Initiative of Aix-Marseille University (A\*MIDEX, A-M-AAP-ID-17-33-170301-07.22), a French 'Investissements d'Avenir' programme. M.P. is supported by a doctoral fellowship from the French Ministère de l'Enseignement Supérieur, de la Recherche et de l'Innovation.

#### Acknowledgements

We thank the members of the Cascales laboratory, P. Leone and A. Roussel for discussions, Bérengère Ize for critical reading of the manuscript and the two anonymous referees for their very constructive comments and suggestions.

#### Conflicts of interest

The authors declare that there are no conflicts of interest.

#### References

- Lasica AM, Ksiazek M, Madej M, Potempa J. The Type IX Secretion System (T9SS): highlights and recent insights into its structure and function. *Front Cell Infect Microbiol* 2017;7:215.
- Veith PD, Glew MD, Gorasia DG, Reynolds EC. Type IX secretion: the generation of bacterial cell surface coatings involved in virulence, gliding motility and the degradation of complex biopolymers. *Mol Microbiol* 2017;106:35–53.
- McBride MJ, Sandkvist M, Cascales E, Christie PJ. *Bacteroidetes* gliding motility and the type IX secretion system. *Microbiol Spectr* 2019;7:SIB-0002.
- Gorasia DG, Veith PD, Reynolds EC. The type IX secretion system: advances in structure, function and organisation. *Microorganisms* 2020;8:1173.
- Veith PD, Glew MD, Gorasia DG, Cascales E, Reynolds EC. The type IX secretion system and its role in bacterial function and pathogenesis. *J Dent Res* 2022;101:374–383.
- McBride MJ, Zhu Y. Gliding motility and Por secretion system genes are widespread among members of the phylum *Bacteroidetes*. *J Bacteriol* 2013;195:270–278.
- Sato K, Naito M, Yukitake H, Hirakawa H, Shoji M, et al. A protein secretion system linked to bacteroidete gliding motility and pathogenesis. *Proc Natl Acad Sci U S A* 2010;107:276–281.
- Nakane D, Sato K, Wada H, McBride MJ, Nakayama K. Helical flow of surface protein required for bacterial gliding motility. *Proc Natl Acad Sci U S A* 2013;110:11145–11150.
- Kharade SS, McBride MJ. *Flavobacterium johnsoniae* chitinase ChiA is required for chitin utilization and is secreted by the type IX secretion system. *J Bacteriol* 2014;196:961–970.
- Tomek MB, Neumann L, Nimeth I, Koerdt A, Andesner P, et al. The S-layer proteins of *Tannerella forsythia* are secreted via a type IX secretion system that is decoupled from protein O-glycosylation. *Mol Oral Microbiol* 2014;29:307–320.
- Nan B, McBride MJ, Chen J, Zusman DR, Oster G. Bacteria that glide with helical tracks. *Curr Biol* 2014;24:R169–R173.
- Larsbrink J, McKee LS. Bacteroidetes bacteria in the soil: Glycan acquisition, enzyme secretion, and gliding motility. *Adv Appl Microbiol* 2020;110:63–98.
- Vincent MS, Canestrari MJ, Leone P, Stathopoulos J, Ize B, et al. Characterization of the *Porphyromonas gingivalis* type IX secretion trans-envelope PorKLMNP core complex. *J Biol Chem* 2017;292:3252–3261.
- Hennell James R, Deme JC, Kjør A, Alcock F, Silale A, et al. Structure and mechanism of the proton-driven motor that powers type 9 secretion and gliding motility. *Nat Microbiol* 2021;6:221–233.
- Hennell James R, Deme JC, Hunter A, Berks BC, Lea SM. Structures of the type IX secretion/gliding motility motor from across the phylum *Bacteroidetes*. *mBio* 2022;13:e0026722.
- Leone P, Roche J, Vincent MS, Tran QH, Desmyter A, et al. Type IX secretion system PorM and gliding machinery GldM form arches spanning the periplasmic space. *Nat Commun* 2018;9:429.
- Sato K, Okada K, Nakayama K, Imada K. PorM, a core component of bacterial type IX secretion system, forms a dimer with a unique kinked-rod shape. *Biochem Biophys Res Commun* 2020;532:114–119.
- Ridgway HF. Source of energy for gliding motility in *Flexibacter polymorphus*: effects of metabolic and respiratory inhibitors on gliding movement. *J Bacteriol* 1977;131:544–556.
- Vincent MS, Comas Hervada C, Sebban-Kreuzer C, Le Guenno H, Chabaliere M, et al. Dynamic proton-dependent motors power type IX secretion and gliding motility in *Flavobacterium*. *PLoS Biol* 2022;20:e3001443.
- Song L, Perpich JD, Wu C, Doan T, Nowakowska Z, et al. A unique bacterial secretion machinery with multiple secretion centers. *Proc Natl Acad Sci U S A* 2022;119:e2119907119.
- Gorasia DG, Veith PD, Hanssen EG, Glew MD, Sato K, et al. Structural insights into the PorK and PorN components of the *Porphyromonas gingivalis* type IX secretion system. *PLoS Pathog* 2016;12:e1005820.
- Braun TF, McBride MJ. *Flavobacterium johnsoniae* GldJ is a lipoprotein that is required for gliding motility. *J Bacteriol* 2005;187:2628–2637.

23. Rhodes RG, Samarasam MN, Shrivastava A, van Baaren JM, Pochiraju S, et al. *Flavobacterium johnsoniae* gldN and gldO are partially redundant genes required for gliding motility and surface localization of SprB. *J Bacteriol* 2010;192:1201–1211.
24. Johnston JJ, Shrivastava A, McBride MJ. Untangling *Flavobacterium johnsoniae* gliding motility and protein secretion. *J Bacteriol* 2018;200:e00362–17.
25. Fuchsbauer O, Lunar Silva I, Cascales E, Roussel A, Leone P. Structural and functional analyses of the *Porphyromonas gingivalis* type IX secretion system PorN protein. *J Biol Chem* 2022;298:101618.
26. Lauber F, Deme JC, Lea SM, Berks BC. Type 9 secretion system structures reveal a new protein transport mechanism. *Nature* 2018;564:77–82.
27. Glew MD, Veith PD, Chen D, Gorasia DG, Peng B, et al. PorV is an outer membrane shuttle protein for the type IX secretion system. *Sci Rep* 2017;7:8790.
28. Dorgan B, Liu Y, Wang S, Aduse-Opoku J, Whittaker SB-M, et al. Structural model of a *Porphyromonas gingivalis* type IX secretion system shuttle complex. *J Mol Biol* 2022;434:167871.
29. Gorasia DG, Lunar Silva I, Butler CA, Chabaliere M, Doan T, et al. Protein interactome analysis of the type IX secretion system identifies PorW as the missing link between the PorK/N Ring complex and the Sov translocon. *Microbiol Spectr* 2022;10:e0160221.
30. Glew MD, Veith PD, Peng B, Chen Y-Y, Gorasia DG, et al. PG0026 is the C-terminal signal peptidase of a novel secretion system of *Porphyromonas gingivalis*. *J Biol Chem* 2012;287:24605–24617.
31. Gorasia DG, Veith PD, Chen D, Seers CA, Mitchell HA, et al. *Porphyromonas gingivalis* type IX secretion substrates are cleaved and modified by a sortase-like mechanism. *PLoS Pathog* 2015;11:e1005152.
32. Lasica AM, Goulas T, Mizgalska D, Zhou X, de Diego I, et al. Structural and functional probing of PorZ, an essential bacterial surface component of the type-IX secretion system of human oral-microbiome *Porphyromonas gingivalis*. *Sci Rep* 2016;6:37708.
33. Madej M, Nowakowska Z, Ksiazek M, Lasica AM, Mizgalska D, et al. PorZ, an essential component of the type IX secretion system of *Porphyromonas gingivalis*, delivers anionic lipopolysaccharide to the PorU sortase for transpeptidase processing of T9SS cargo proteins. *mBio* 2021;12:e02262–20.
34. Mizgalska D, Goulas T, Rodríguez-Banqueri A, Veillard F, Madej M, et al. Intermolecular latency regulates the essential C-terminal signal peptidase and sortase of the *Porphyromonas gingivalis* type-IX secretion system. *Proc Natl Acad Sci U S A* 2021;118:e2103573118.
35. Gorasia DG, Veith PD, Reynolds EC. Protein interactome mapping of *Porphyromonas gingivalis* provides insights into the formation of the PorQ-Z complex of the type IX secretion system. *Mol Oral Microbiol* 2023;38:34–40.
36. Hunnicutt DW, Kempf MJ, McBride MJ. Mutations in *Flavobacterium johnsoniae* gldF and gldG disrupt gliding motility and interfere with membrane localization of GldA. *J Bacteriol* 2002;184:2370–2378.
37. Braun TF, Khubbar MK, Saffarini DA, McBride MJ. *Flavobacterium johnsoniae* gliding motility genes identified by mariner mutagenesis. *J Bacteriol* 2005;187:6943–6952.
38. McBride MJ, Braun TF. GldI is a lipoprotein that is required for *Flavobacterium johnsoniae* gliding motility and chitin utilization. *J Bacteriol* 2004;186:2295–2302.
39. McBride MJ, Braun TF, Brust JL. *Flavobacterium johnsoniae* GldH is a lipoprotein that is required for gliding motility and chitin utilization. *J Bacteriol* 2003;185:6648–6657.
40. Rhodes RG, Nelson SS, Pochiraju S, McBride MJ. *Flavobacterium johnsoniae* sprB is part of an operon spanning the additional gliding motility genes sprC, sprD, and sprF. *J Bacteriol* 2011;193:599–610.
41. Rhodes RG, Pucker HG, McBride MJ. Development and use of a gene deletion strategy for *Flavobacterium johnsoniae* to identify the redundant gliding motility genes remF, remG, remH, and remI. *J Bacteriol* 2011;193:2418–2428.
42. McBride MJ, Nakane D. *Flavobacterium* gliding motility and the type IX secretion system. *Curr Opin Microbiol* 2015;28:72–77.
43. Mikolajczyk J, Boatright KM, Stennicke HR, Nazif T, Potempa J, et al. Sequential autolytic processing activates the zymogen of Arg-gingipain. *J Biol Chem* 2003;278:10458–10464.
44. Veillard F, Sztukowska M, Mizgalska D, Ksiazek M, Houston J, et al. Inhibition of gingipains by their profragments as the mechanism protecting *Porphyromonas gingivalis* against premature activation of secreted proteases. *Biochim Biophys Acta* 2013;1830:4218–4228.
45. de Diego I, Veillard FT, Guevara T, Potempa B, Sztukowska M, et al. *Porphyromonas gingivalis* virulence factor gingipain RgpB shows a unique zymogenic mechanism for cysteine peptidases. *J Biol Chem* 2013;288:14287–14296.
46. Veith PD, Nor Muhammad NA, Dashper SG, Likić VA, Gorasia DG, et al. Protein substrates of a novel secretion system are numerous in the *Bacteroidetes* phylum and have in common a cleavable C-terminal secretion signal, extensive post-translational modification, and cell-surface attachment. *J Proteome Res* 2013;12:4449–4461.
47. Shoji M, Sato K, Yukitake H, Kondo Y, Narita Y, et al. Por secretion system-dependent secretion and glycosylation of *Porphyromonas gingivalis* hemin-binding protein 35. *PLoS One* 2011;6:e21372.
48. Kulkarni SS, Zhu Y, Brendel CJ, McBride MJ. Diverse C-terminal sequences involved in *Flavobacterium johnsoniae* protein secretion. *J Bacteriol* 2017;199:e00884–16.
49. Kulkarni SS, Johnston JJ, Zhu Y, Hyung ZT, McBride MJ. The carboxy-terminal region of *Flavobacterium johnsoniae* SprB facilitates its secretion by the type IX secretion system and propulsion by the gliding motility machinery. *J Bacteriol* 2019;201:e00218–19.
50. Thunes NC, Conrad RA, Mohammed HH, Zhu Y, Barbier P, et al. Type IX secretion system effectors and virulence of the model *Flavobacterium columnare* strain MS-FC-4. *Appl Environ Microbiol* 2022;88:e0170521.
51. Seers CA, Slakeski N, Veith PD, Nikolof T, Chen Y-Y, et al. The RgpB C-terminal domain has a role in attachment of RgpB to the outer membrane and belongs to a novel C-terminal-domain family found in *Porphyromonas gingivalis*. *J Bacteriol* 2006;188:6376–6386.
52. Nguyen K-A, Travis J, Potempa J. Does the importance of the C-terminal residues in the maturation of RgpB from *Porphyromonas gingivalis* reveal a novel mechanism for protein export in a subgroup of Gram-negative bacteria? *J Bacteriol* 2007;189:833–843.
53. de Diego I, Ksiazek M, Mizgalska D, Koneru L, Golik P, et al. The outer-membrane export signal of *Porphyromonas gingivalis* type IX secretion system (T9SS) is a conserved C-terminal  $\beta$ -sandwich domain. *Sci Rep* 2016;6:23123.
54. Sato K, Kakuda S, Yukitake H, Kondo Y, Shoji M, et al. Immunoglobulin-like domains of the cargo proteins are essential for protein stability during secretion by the type IX secretion system. *Mol Microbiol* 2018;110:64–81.
55. Vincent MS, Chabaliere M, Cascales E. A conserved motif of *Porphyromonas* type IX secretion effectors C-terminal secretion signal specifies interactions with the PorKLMN core complex. *BioRxiv* 2018;483123.
56. Gorasia DG, Seers CA, Heath JE, Glew MD, Soleimaninejad H, et al. Type B CTD proteins secreted by the type IX secretion system associate with PorP-like proteins for cell surface anchorage. *Int J Mol Sci* 2022;23:5681.
57. Heath JE, Seers CA, Veith PD, Butler CA, Nor Muhammad NA, et al. PG1058 is a novel multidomain protein component of the bacterial type IX secretion system. *PLoS One* 2016;11:e0164313.

58. Trinh NTT, Tran HQ, Van Dong Q, Cambillau C, Roussel A, et al. Crystal structure of Type IX secretion system PorE C-terminal domain from *Porphyromonas gingivalis* in complex with a peptidoglycan fragment. *Sci Rep* 2020;10:7384.
59. Veith PD, Shoji M, O'Hair RAJ, Leeming MG, Nie S, et al. Type IX secretion system cargo proteins are glycosylated at the C terminus with a novel linking sugar of the Wbp/Vim pathway. *mBio* 2020;11:e01497-20.
60. Veillard F, Sztukowska M, Nowakowska Z, Mizgalska D, Thøgersen IB, et al. Proteolytic processing and activation of gingipain zymogens secreted by T9SS of *Porphyromonas gingivalis*. *Biochimie* 2019;166:161–172.
61. Zhu Y, McBride MJ. Deletion of the *Cytophaga hutchinsonii* type IX secretion system gene sprP results in defects in gliding motility and cellulose utilization. *Appl Microbiol Biotechnol* 2014;98:763–775.
62. Zhu Y, McBride MJ. The unusual cellulose utilization system of the aerobic soil bacterium *Cytophaga hutchinsonii*. *Appl Microbiol Biotechnol* 2017;101:7113–7127.
63. Gao L, Su Y, Song W, Zhang W, Qi Q, et al. A type IX secretion system substrate involved in crystalline cellulose degradation by affecting crucial cellulose binding proteins in *Cytophaga hutchinsonii*. *Appl Environ Microbiol* 2022;88:e0183721.
64. Xie S, Huang Q, Tan R, Zhang W, Qi Q, et al. Glycosyltransferase-related protein GtrA is essential for localization of type IX secretion system cargo protein cellulase Cel9A and affects cellulose degradation in *Cytophaga hutchinsonii*. *Appl Environ Microbiol* 2022;88:e0107622.
65. Xie S, Tan Y, Song W, Zhang W, Qi Q, et al. N-Glycosylation of a cargo protein C-terminal domain recognized by the type IX secretion system in *Cytophaga hutchinsonii* affects protein secretion and localization. *Appl Environ Microbiol* 2022;88:e0160621.
66. Nowakowska Z, Madej M, Grad S, Wang T, Hackett M, et al. Phosphorylation of major *Porphyromonas gingivalis* virulence factors is crucial for their processing and secretion. *Mol Oral Microbiol* 2021;36:316–326.
67. Nakayama K. *Porphyromonas gingivalis* and related bacteria: from colonial pigmentation to the type IX secretion system and gliding motility. *J Periodontol Res* 2015;50:1–8.
68. Chen T, Dong H, Yong R, Duncan MJ. Pleiotropic pigmentation mutants of *Porphyromonas gingivalis*. *Microb Pathog* 2000;28:235–247.
69. Uitto VJ, Larjava H, Heino J, Sorsa T. A protease of *Bacteroides gingivalis* degrades cell surface and matrix glycoproteins of cultured gingival fibroblasts and induces secretion of collagenase and plasminogen activator. *Infect Immun* 1989;57:213–218.
70. de Diego I, Veillard F, Sztukowska MN, Guevara T, Potempa B, et al. Structure and mechanism of cysteine peptidase gingipain K (Kgp), a major virulence factor of *Porphyromonas gingivalis* in periodontitis. *J Biol Chem* 2014;289:32291–32302.
71. Chen Y-Y, Peng B, Yang Q, Glew MD, Veith PD, et al. The outer membrane protein LptO is essential for the O-deacylation of LPS and the co-ordinated secretion and attachment of A-LPS and CTD proteins in *Porphyromonas gingivalis*. *Mol Microbiol* 2011;79:1380–1401.
72. Guo Y, Nguyen KA, Potempa J. Dichotomy of gingipains action as virulence factors: from cleaving substrates with the precision of a surgeon's knife to a meat chopper-like brutal degradation of proteins. *Periodontology* 2000;54:15–44.
73. Hočevár K, Potempa J, Turk B. Host cell-surface proteins as substrates of gingipains, the main proteases of *Porphyromonas gingivalis*. *Biol Chem* 2018;399:1353–1361.
74. Kato T, Tsuda T, Omori H, Kato T, Yoshimori T, et al. Maturation of fimbria precursor protein by exogenous gingipains in *Porphyromonas gingivalis* gingipain-null mutant. *FEMS Microbiol Lett* 2007;273:96–102.
75. Lee JY, Miller DP, Wu L, Casella CR, Hasegawa Y, et al. Maturation of the Mfa1 fimbriae in the oral pathogen *Porphyromonas gingivalis*. *Front Cell Infect Microbiol* 2018;8:137.
76. Shibata S, Shoji M, Okada K, Matsunami H, Matthews MM, et al. Structure of polymerized type V pilin reveals assembly mechanism involving protease-mediated strand exchange. *Nat Microbiol* 2020;5:830–837.
77. Hiratsuka K, Kiyama-Kishikawa M, Abiko Y. Hemin-binding protein 35 (HBP35) plays an important role in bacteria-mammalian cells interactions in *Porphyromonas gingivalis*. *Microb Pathog* 2010;48:116–123.
78. Gully N, Bright R, Marino V, Marchant C, Cantley M, et al. *Porphyromonas gingivalis* peptidylarginine deiminase, a key contributor in the pathogenesis of experimental periodontal disease and experimental arthritis. *PLoS One* 2014;9:e100838.
79. Glowczyk I, Wong A, Potempa B, Babyak O, Lech M, et al. Inactive gingipains from *P. gingivalis* selectively skews T cells toward a Th17 phenotype in an IL-6 dependent manner. *Front Cell Infect Microbiol* 2017;7:140.
80. Lunar Silva I, Cascales E. Molecular strategies underlying *Porphyromonas gingivalis* virulence. *J Mol Biol* 2021;433:166836.
81. Goulas T, Mizgalska D, Garcia-Ferrer I, Kantyka T, Guevara T, et al. Structure and mechanism of a bacterial host-protein citrullinating virulence factor, *Porphyromonas gingivalis* peptidylarginine deiminase. *Sci Rep* 2015;5:11969.
82. Maresz KJ, Hellvard A, Sroka A, Adamowicz K, Bielecka E, et al. *Porphyromonas gingivalis* facilitates the development and progression of destructive arthritis through its unique bacterial peptidylarginine deiminase (PAD). *PLoS Pathog* 2013;9:e1003627.
83. Narita Y, Sato K, Yukitake H, Shoji M, Nakane D, et al. Lack of a surface layer in *Tannerella forsythia* mutants deficient in the type IX secretion system. *Microbiology* 2014;160:2295–2303.
84. Li N, Zhu Y, LaFrentz BR, Evenhuis JP, Hunnicutt DW, et al. The type IX secretion system is required for virulence of the fish pathogen *Flavobacterium columnare*. *Appl Environ Microbiol* 2017;83:e01769-17.
85. Guo Y, Hu D, Guo J, Wang T, Xiao Y, et al. *Riemerella anatipestifer* type IX secretion system is required for virulence and gelatinase secretion. *Front Microbiol* 2017;8:2553.
86. Barbier P, Rochat T, Mohammed HH, Wiens GD, Bernardet J-F, et al. The type IX secretion system is required for virulence of the fish pathogen *Flavobacterium psychrophilum*. *Appl Environ Microbiol* 2020;86:e00799-20.
87. McBride MJ. *Cytophaga*-flavobacterium gliding motility. *J Mol Microbiol Biotechnol* 2004;7:63–71.
88. Nelson SS, Bollampalli S, McBride MJ. SprB is a cell surface component of the *Flavobacterium johnsoniae* gliding motility machinery. *J Bacteriol* 2008;190:2851–2857.
89. Shrivastava A, Rhodes RG, Pochiraju S, Nakane D, McBride MJ. *Flavobacterium johnsoniae* RemA is a mobile cell surface lectin involved in gliding. *J Bacteriol* 2012;194:3678–3688.
90. Nelson SS, Glocka PP, Agarwal S, Grimm DP, McBride MJ. *Flavobacterium johnsoniae* SprA is a cell surface protein involved in gliding motility. *J Bacteriol* 2007;189:7145–7150.
91. Agarwal S, Hunnicutt DW, McBride MJ. Cloning and characterization of the *Flavobacterium johnsoniae* (*Cytophaga johnsoniae*) gliding motility gene, gldA. *Proc Natl Acad Sci U S A* 1997;94:12139–12144.
92. Hunnicutt DW, McBride MJ. Cloning and characterization of the *Flavobacterium johnsoniae* gliding-motility genes gldB and gldC. *J Bacteriol* 2000;182:911–918.
93. Hunnicutt DW, McBride MJ. Cloning and characterization of the *Flavobacterium johnsoniae* gliding motility genes gldD and gldE. *J Bacteriol* 2001;183:4167–4175.
94. Shrivastava A, Roland T, Berg HC. The screw-like movement of a gliding bacterium is powered by spiral motion of cell-surface adhesins. *Biophys J* 2016;111:1008–1013.

95. Wada H, Nakane D, Chen H-Y. Bidirectional bacterial gliding motility powered by the collective transport of cell surface proteins. *Phys Rev Lett* 2013;111:248102.
96. Islam ST, Mignot T. The mysterious nature of bacterial surface (gliding) motility: a focal adhesion-based mechanism in *Myxococcus xanthus*. *Semin Cell Dev Biol* 2015;46:143–154.
97. Shrivastava A, Johnston JJ, van Baaren JM, McBride MJ. *Flavobacterium johnsoniae* GldK, GldL, GldM, and SprA are required for secretion of the cell surface gliding motility adhesins SprB and RemA. *J Bacteriol* 2013;195:3201–3212.
98. Shrivastava A, Lele PP, Berg HC. A rotary motor drives *Flavobacterium* gliding. *Curr Biol* 2015;25:338–341.
99. Trivedi A, Gosai J, Nakane D, Shrivastava A. Design principles of the rotary type 9 secretion system. *Front Microbiol* 2022;13:845563.
100. Shrivastava A, Berg HC. Towards a model for *Flavobacterium* gliding. *Curr Opin Microbiol* 2015;28:93–97.
101. Shrivastava A, Berg HC. A molecular rack and pinion actuates a cell-surface adhesin and enables bacterial gliding motility. *Sci Adv* 2020;6:eaay6616.
102. Shibata S, Tahara YO, Katayama E, Kawamoto A, Kato T, et al. Filamentous structures in the cell envelope are associated with Bacteroidetes gliding machinery. *Commun Biol* 2023;6:94.
103. Thomas F, Hehemann J-H, Rebuffet E, Czjzek M, Michel G. Environmental and gut Bacteroidetes: the food connection. *Front Microbiol* 2011;2:93.
104. Ramos KRM, Valdehuesa KNG, Bañares AB, Nisola GM, Lee W-K, et al. Overexpression and characterization of a novel GH16  $\beta$ -agarase (Aga1) from *Cellulophaga omnivescoria* W5C. *Biotechnol Lett* 2020;42:2231–2238.
105. McKee LS, La Rosa SL, Westereng B, Eijsink VG, Pope PB, et al. Polysaccharide degradation by the Bacteroidetes: mechanisms and nomenclature. *Environ Microbiol Rep* 2021;13:559–581.
106. Xie G, Bruce DC, Challacombe JF, Chertkov O, Dettler JC, et al. Genome sequence of the cellulolytic gliding bacterium *Cytophaga hutchinsonii*. *Appl Environ Microbiol* 2007;73:3536–3546.
107. Vera-Ponce de León A, Jahnes BC, Duan J, Camuy-Vélez LA, Sabree ZL. Cultivable, host-specific Bacteroidetes symbionts exhibit diverse polysaccharolytic strategies. *Appl Environ Microbiol* 2020;86:e00091–20.
108. Kolton M, Frenkel O, Elad Y, Cytryn E. Potential role of *Flavobacterium* gliding-motility and type IX secretion system complex in root colonization and plant defense. *Mol Plant Microbe Interact* 2014;27:1005–1013.
109. Zhu Y, Han L, Hefferon KL, Silvaggi NR, Wilson DB, et al. Periplasmic *Cytophaga hutchinsonii* endoglucanases are required for use of crystalline cellulose as the sole source of carbon and energy. *Appl Environ Microbiol* 2016;82:4835–4845.
110. Gerbino E, Carasi P, Mobili P, Serradell MA, Gómez-Zavaglia A. Role of S-layer proteins in bacteria. *World J Microbiol Biotechnol* 2015;31:1877–1887.
111. Bharat TAM, von Kùgelgen A, Alva V. Molecular logic of prokaryotic surface layer structures. *Trends Microbiol* 2021;29:405–415.
112. Ravi J, Fioravanti A. S-layers: the proteinaceous multifunctional armors of Gram-positive pathogens. *Front Microbiol* 2021;12:663468.
113. Messner P, Schäffer C, Kosma P. Bacterial cell-envelope glycoconjugates. *Adv Carbohydr Chem Biochem* 2013;69:209–272.
114. Sleytr UB, Schuster B, Egelseer E-M, Pum D. S-layers: principles and applications. *FEMS Microbiol Rev* 2014;38:823–864.
115. Posch G, Pabst M, Brecker L, Altmann F, Messner P, et al. Characterization and scope of S-layer protein O-glycosylation in *Tannerella forsythia*. *J Biol Chem* 2011;286:38714–38724.
116. Sabet M, Lee SW, Nauman RK, Sims T, Um H-S. The surface (S-) layer is a virulence factor of *Bacteroides forsythus*. *Microbiology* 2003;149:3617–3627.
117. Sakakibara J, Nagano K, Murakami Y, Higuchi N, Nakamura H, et al. Loss of adherence ability to human gingival epithelial cells in S-layer protein-deficient mutants of *Tannerella forsythensis*. *Microbiology* 2007;153:866–876.
118. Bloch S, Thurnheer T, Murakami Y, Belibasakis GN, Schäffer C. Behavior of two *Tannerella forsythia* strains and their cell surface mutants in multispecies oral biofilms. *Mol Oral Microbiol* 2017;32:404–418.
119. Hiratsuka K, Hayakawa M, Kiyama-Kishikawa M, Sasaki Y, Hirai T, et al. Role of the hemin-binding protein 35 (HBP35) of *Porphyromonas gingivalis* in coaggregation. *Microb Pathog* 2008;44:320–328.
120. Shoji M, Shibata Y, Shiroza T, Yukitake H, Peng B, et al. Characterization of hemin-binding protein 35 (HBP35) in *Porphyromonas gingivalis*: its cellular distribution, thioredoxin activity and role in heme utilization. *BMC Microbiol* 2010;10:152.
121. Socransky SS, Haffajee AD, Cugini MA, Smith C, Kent RL. Microbial complexes in subgingival plaque. *J Clin Periodontol* 1998;25:134–144.
122. Byrne DP, Potempa J, Olczak T, Smalley JW. Evidence of mutualism between two periodontal pathogens: co-operative haem acquisition by the HmuY haemophore of *Porphyromonas gingivalis* and the cysteine protease interpain A (InpA) of *Prevotella intermedia*. *Mol Oral Microbiol* 2013;28:219–229.
123. Hudson J, Kumar V, Egan S. Comparative genome analysis provides novel insight into the interaction of *Aquimarina* sp. AD1, BL5 and AD10 with their macroalgal host. *Mar Genomics* 2019;46:8–15.
124. Hudson J, Egan S. Opportunistic diseases in marine eukaryotes: could Bacteroidota be the next threat to ocean life? *Environ Microbiol* 2022;24:4505–4518.
125. Astafyeva Y, Gurschke M, Streit WR, Krohn I. Interplay between the microalgae *Micrasterias radians* and its symbiont *Dyadobacter* sp. HH091. *Front Microbiol* 2022;13:1006609.
126. Madeira F, Pearce M, Tivey ARN, Basutkar P, Lee J, et al. Search and sequence analysis tools services from EMBL-EBI in 2022. *Nucleic Acids Res* 2022;50:W276–W279.
127. Waterhouse AM, Procter JB, Martin DMA, Clamp M, Barton GJ. Jalview Version 2--a multiple sequence alignment editor and analysis workbench. *Bioinformatics* 2009;25:1189–1191.
128. Chen Z, Niu P, Ren X, Han W, Shen R, et al. *Riemerella anatipestifer* T9SS effector SspA functions in bacterial virulence and defending natural host immunity. *Appl Environ Microbiol* 2022;88:e02409–21.
129. Niu P, Chen Z, Ren X, Han W, Dong H, et al. A *Riemerella anatipestifer* metallophosphoesterase that displays phosphatase activity and is associated with virulence. *Appl Environ Microbiol* 2021;87:e00086–21.
130. Zhu M, Chen Z, Shen R, Niu P, Feng Y, et al. *Riemerella anatipestifer* AS87\_RS02955 acts as a virulence factor and displays endonuclease activity. *Appl Environ Microbiol* 2022;88:e01276–22.
131. Teo SC, Liew KJ, Shamsir MS, Chong CS, Bruce NC, et al. Characterizing a halo-tolerant GH10 xylanase from *Roseithermus sacchariphilus* strain RA and its CBM-truncated variant. *IJMS* 2019;20:2284.