



**HAL**  
open science

# A methodology based on territorial metabolism analysis to assess the multi-criteria sustainability of African village terroirs with contrasted crop-livestock systems

Elise Audouin, Mariana Odru, Dominique Masse, Gualbert Séraphin Dorégo, Valérie Delaunay, Philippe Lecomte, Jonathan Vayssières

## ► To cite this version:

Elise Audouin, Mariana Odru, Dominique Masse, Gualbert Séraphin Dorégo, Valérie Delaunay, et al.. A methodology based on territorial metabolism analysis to assess the multi-criteria sustainability of African village terroirs with contrasted crop-livestock systems. *Agricultural Systems*, 2024, 213, pp.103781. 10.1016/j.agsy.2023.103781 . hal-04318046

**HAL Id: hal-04318046**

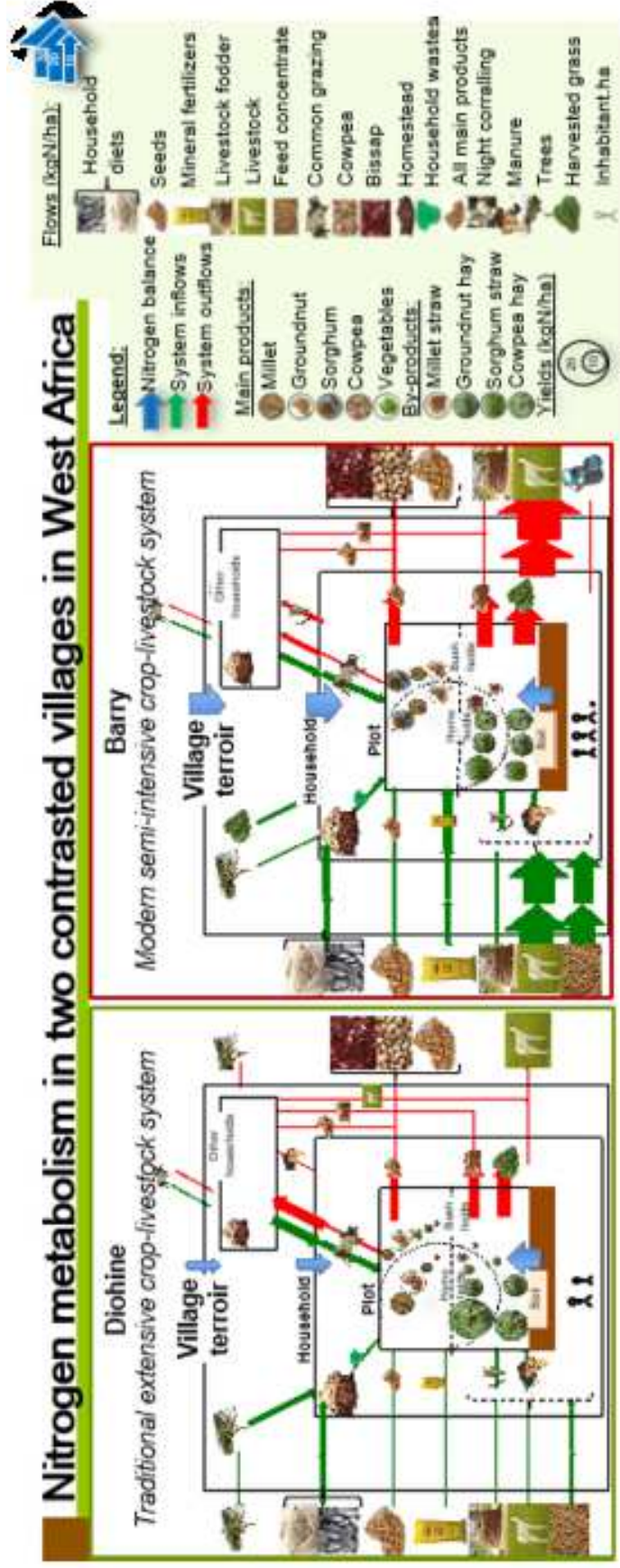
**<https://amu.hal.science/hal-04318046>**

Submitted on 5 Feb 2024

**HAL** is a multi-disciplinary open access archive for the deposit and dissemination of scientific research documents, whether they are published or not. The documents may come from teaching and research institutions in France or abroad, or from public or private research centers.

L'archive ouverte pluridisciplinaire **HAL**, est destinée au dépôt et à la diffusion de documents scientifiques de niveau recherche, publiés ou non, émanant des établissements d'enseignement et de recherche français ou étrangers, des laboratoires publics ou privés.

# Nitrogen metabolism in two contrasted villages in West Africa



## **Abstract**

### CONTEXT

Agricultural intensification to ensure food security and limit rural exodus is a major issue in sub-Saharan Africa. The potential of livestock farming to improve the sustainability of farming systems has been studied but rarely at the landscape level. However, because the herds move about in the landscape, thereby creating horizontal biomass and nutrient flows between plots and households, the landscape is the only level where all the interactions between the different components of the agro-ecosystem (animals, crops and trees) can be taken into account.

### OBJECTIVE

Our objective was to develop a methodology that uses territorial metabolism for multicriteria assessment of sustainability to compare contrasted livestock systems.

### METHODS

We compare two neighboring village *terroirs* in the former groundnut basin of Senegal. One village (Diohine), has kept a “traditional extensive system” based on fallow, free grazing and night corralling, while the other (Barry) uses a “modern semi-intensive system” based on livestock fattening in which the livestock is stall-fed with feed concentrate and crop residues. Village households were surveyed to describe their practices and to quantify biomass and nitrogen (N) flows to calculate sustainability indicators (productivity, balance, efficiency, dependency, profitability) at plot, household and village *terroir* levels.

### RESULTS AND CONCLUSIONS

At village *terroir* level, introducing livestock fattening increased the livestock stocking rate (cf. 0.96 TLU.ha<sup>-1</sup> in Diohine and 2.31 in Barry) and spreading of solid manure on crop fields (respectively 337 and 482 kgDM ha<sup>-1</sup>). Fattening livestock requires large imports of feed concentrate, 23.67 kgN ha<sup>-1</sup> in Barry versus 3.39 kgN ha<sup>-1</sup> in Diohine. The improved livestock productivity of fattening (+217 kgLW ha<sup>-1</sup>) produces higher financial returns (+432€ household<sup>-1</sup> year<sup>-1</sup>) that enable higher volumes of mineral fertilizers (6.28 kgN ha<sup>-1</sup> in Barry versus 1.09 in Diohine). The additional N inputs in Barry enable increased yields of the main staple crop (millet) (+101 kgDM ha<sup>-1</sup>). The population density of Barry village is +78% higher (320 capita km<sup>-2</sup> in Barry versus 180 in Diohine). The village nitrogen balance (24.88 kgN ha<sup>-1</sup> in Barry versus 8.51 in Diohine) and N use efficiencies (respectively 0.64 and 0.15) demonstrate that nutrient cycling and soil fertility management are more sustainable in Barry.

### SIGNIFICANCE

We propose a methodology to rebuild territorial metabolism from surveys. Territorial metabolism is used to calculate a set of multi-criteria sustainability indicators. This methodology will be particularly useful in Southern countries where data on agricultural systems are lacking.

1 **A method based on territorial metabolism analysis to assess the multi-criteria**  
2 **sustainability of African village terroirs with contrasted crop-livestock systems**

3

4 Elise **Audouin**<sup>a,b,c\*</sup>, Mariana **Odrú**<sup>a,b,c</sup>, Dominique **Masse**<sup>d,e</sup>, Gualbert Séraphin **Dorégo**<sup>f,c</sup>, Valérie **Delaunay**<sup>g</sup>,  
5 Philippe **Lecomte**<sup>a,b,c</sup>, Jonathan **Vayssières**<sup>a,b,c</sup>

6

7 <sup>a</sup> CIRAD, UMR SELMET, Dakar, Senegal

8 <sup>b</sup> SELMET, Univ Montpellier, CIRAD, INRAE, Institut Agro Montpellier, Montpellier, France

9 <sup>c</sup> PPZS, Pastoral Systems and Dry Lands, centre ISRA Hann BP2057, Dakar, Senegal

10 <sup>d</sup> Eco&Sols, IRD, CIRAD, INRAE, Institut Agro Montpellier, Université de Montpellier, Montpellier,  
11 France

12 <sup>e</sup> IESOL, Ecological Intensification of Cultivated Soils in West Africa, Centre ISRA IRD Bel Air  
13 BP1386, Dakar, Senegal

14 <sup>f</sup> ISRA, CNRA de Bambey, BP 53 Bambey, Senegal

15 <sup>g</sup> LPED, IRD, Aix Marseille Université, Dakar, Sénégal

16

17 \* Corresponding author. E-mail addresses: [elise.audouin@laposte.net](mailto:elise.audouin@laposte.net) (E. Audouin)

18

19 **Abstract**

20

21 **Graphical abstract**

22

23 **Key words:** territorial metabolism, nutrient cycling, village *terroir*, agro-sylvo-pastoral  
24 systems, livestock fattening, Senegal

25

26 **1. Introduction**

27 In West Africa, improving living standards and food security are still key issues  
28 (Lahmar et al., 2012). In sub-Saharan Africa in 2012, poverty still affected more than half the  
29 population, with 40.3% of the inhabitants earning less than US\$2.15 per day, especially in rural  
30 areas, which account for 63% of the total population) (The World Bank, 2012a, 2012b). The  
31 sustainability of agricultural systems is a major concern since most of the population is rural.  
32 Integrated agro-sylvo-pastoral systems have traditionally predominated in West Africa (Dugue  
33 et al., 2012; Jouve, 2001). These systems are based on the complementarity between ruminant  
34 herds, cereal crops, and wooded parklands (Jouve, 2001) and their sustainability depends to a  
35 large extent on fertility transfers from rangelands to cropped lands, through herd mobility and  
36 night corralling (Dugue, 1985; Freschet et al., 2008). The high population growth rate (above  
37 +2.4% per year in sub-Saharan Africa since 1961) led to a rapid change in agricultural systems  
38 (Dongmo et al., 2012; The World Bank, 2023), when rural populations started to crop  
39 rangelands (Courtin and Guengant, 2011; Faye and Landais, 1986) and reduce fallow (Andrieu  
40 et al., 2015; Serpantie and Ouattara, 2001) to meet their food needs, thereby decreasing fodder  
41 resources while increasing pressure on wooded parkland. Wooded parklands have been  
42 overused during droughts, resulting in their decline (Courtin and Guengant, 2011; FAO 2003).  
43 As a consequence, herds have become smaller and livestock is fed with crop residues (Andrieu  
44 et al., 2015). Farmers progressively have appropriated crop residues for sale or stored them to  
45 feed their livestock in the dry season (Dugue, 1985; Schlecht et al., 2004). This shift in behavior  
46 reflects the transition from a collective management system to an individual management  
47 system and stresses tensions surrounding biomass resources (Courtin and Guengant, 2011;  
48 Jouve, 2001). Finally, export of the biomass produced in the fields (the main crop products plus  
49 the crop residues) combined with continuous cropping has led to soil fertility depletion since  
50 nutrient exports are no longer offset by an equivalent supply of livestock manure (Andrieu et  
51 al., 2015; Buldgen et al., 1992). This phenomenon led to a reduction in crop yields because  
52 soils in West Africa are inherently poor in nitrogen and organic matter (Schlecht et al., 2004).

53 Some studies have shown that the intensification of livestock farming combined with  
54 crop-livestock integration can address these issues. This strategy can increase farm scale  
55 sustainability from both an environmental (Alvarez et al., 2014; Bénagabou et al., 2017) and an  
56 economic perspective (de Ridder et al., 2015; Duncan et al., 2013). The vast majority of studies  
57 focused on the farm level, and few analyzed this livestock-based strategy at plot, farm (here the  
58 household) and landscape (here the village) levels simultaneously.

59 Landscape is the level of analysis at which all the interactions between ecosystem  
60 components (livestock, crops and trees) can be taken into account, since in sub-Saharan Africa,  
61 herds move around in the landscape thereby creating spatial and horizontal biomass and nutrient  
62 flows (Bisson et al., 2019; Manlay, 2001). The agricultural landscape in sub-Saharan Africa is  
63 organized in village *terroirs*. The Africanist concept of *terroir* has been defined as the « area  
64 cropped and exploited by a village community » (Rabot, 1990). A *terroir* is also defined as a  
65 space with social and geographical features that contains the community's resources and  
66 associated rights to satisfy their needs (Bernard, 2015). In West Africa, village landscapes are  
67 traditionally structured in four concentric rings corresponding to land units (Manlay et al., 2004).  
68 Starting from the center and moving toward the periphery, they comprise: (i) the dwelling, i.e.  
69 the homestead; (ii) “home fields”, i.e. those closest to the homestead, where organic matter is  
70 concentrated in order to insure food security through the production of staple foods; (iii) “bush  
71 fields”, where cash crops are usually grown and where fallow land is used for livestock  
72 corralling and grazing during the cropping season; (iv) “rangelands”, which form the outermost  
73 ring of the village land, and are often less fertile.

74 In many West African ethnic groups, family members are gathered together in a ‘holding’.  
75 Each holding is a dwelling unit grouping several household. Whereas historically, most of the  
76 decisions were made at the scale of the holding, today, due to individualization, the household  
77 is the usual decision-making unit concerning agricultural resources (herd, land, machinery, etc.)  
78 (Adjamagbo et al., 2006). Distinguishing types of households with different strategies and  
79 practices makes it possible to account for interactions (e.g. biomass flows) between households  
80 and to better explain village-level performance (Andrieu et al., 2015). For instance, agreements  
81 between households can improve biomass management and nutrient transfers in village *terroirs*  
82 (Diarisso et al., 2015).

83 Finally, the plot represents the crop management unit, i.e. the level where crop  
84 management practices are implemented. For instance, night-corralling means a herd is parked  
85 in a particular plot for a specified length of time leading to biomass and nutrient livestock-  
86 driven flows between plots (Grillot et al., 2018a). Conventionally, the plot is the level

87 considered to assess the sustainability of cropping systems. For instance, yields and fertility  
88 balances are assessed at plot level (Schlecht and Hiernaux, 2004).

89 In this study, we implemented a multi-level (plot, household, village) biomass and  
90 nutrient flow analysis to calculate multiple indicators and to compare two neighboring village  
91 *terroirs* located in the groundnut basin of Senegal. The groundnut basin of Senegal is widely  
92 known for its agricultural intensification dynamics. The groundnut basin has undergone  
93 spectacular demographic growth (Delaunay et al., 2013); in the 1960s, the region already  
94 seemed saturated (Lericollais, 1999), nevertheless between 1963 and 2009, the population of  
95 the region doubled (Delaunay and Lalou, 2012). The strategies used by the villages to adapt to  
96 this land pressure have been contrasted. In order to keep livestock in the *terroirs*, some of the  
97 village communities kept common fallow and free-grazing systems, whereas other  
98 communities developed livestock fattening systems based on the purchase of feed concentrate  
99 (Audouin et al., 2015). The Senegalese groundnut basin is representative of the intensification  
100 dynamics that are predicted for the next two to four decades in West Africa (Vayssières et al.,  
101 2015).

102 This study assesses the consequences of livestock intensification for the functioning and  
103 sustainability of two neighboring village *terroirs* with similar soil and climate conditions, but  
104 characterized by contrasted livestock systems: free grazing versus livestock fattening systems.  
105 To this end, a multi-criteria assessment of the two village *terroirs*' sustainability was  
106 undertaken based on environmental (nitrogen balance and nitrogen use efficiency), technical  
107 (crop and livestock productivity), social (dependency) and economic (agricultural income and  
108 gross margin) indicators.

## 109 **2. Description of the study area, methods, and techniques**

### 110 **2.1. Study area and the village *terroirs***

111 This study focused on two village *terroirs* located 8 km apart in the former groundnut  
112 basin: Diohine (14°30'15.682N; 16°30'8.763W) and Barry (14°34'29.905N; 16°29'18.364W).  
113 Both form part of Niakhar health, demography and environment observatory, one of the oldest  
114 observatories in sub-Saharan Africa (Delaunay et al., 2013). Most inhabitants belong to the  
115 *Serer* ethnic group (95.2% in Diohine; 88.5% in Barry). Islam is the main religion (47.7% in  
116 Diohine; 98.1% in Barry) followed by Christianity (Delaunay et al., 2013).

117 The main types of soil are luvic Arenosols and ferric Luvisols (Tschakert, 2004). Local  
118 stakeholders differentiate two main soil types: “*dior*” and “*deck*” soils. “*Dior*” soils account for  
119 70% of the area, they are mainly composed of sand (> 95%), have low organic matter content

120 (< 0.2%) and low nitrogen content (< 0.1%). “*Deck*” soils are slightly hydromorphic with high  
121 sand content (85–90%), 3-8% clay, 2% silt, 0.5-0.8% organic matter content, and 0.2-0.4%  
122 nitrogen content (Badiane et al., 2000).

123 The climate is semi-arid, Sahelian-Sudanese, with 566-mm year<sup>-1</sup> average rainfall (mean  
124 rainfall measured at Fatick weather station from 2000 to 2012), a short wet season from June  
125 to September and a long dry season divided into two seasons: a cool dry season from October  
126 to January and a hot dry season from February to May.

127 Both the agricultural systems are rainfed and the main crop grown is millet (*Pennisetum*  
128 *glaucum*) and groundnut (*Arachis hypogaea*) using animal traction (Badiane et al., 2000).  
129 Secondary crops are sorghum and cowpea (Tschakert, 2004). The main livestock species are  
130 cattle (*zebu gobra*), small ruminants (sheep and goats), and horses and donkeys (used as draught  
131 animals) (Lericollais, 1999). The main feature of the village of Diohine is its traditional  
132 agricultural system based on collectively managed fallows, free grazing and night corralling in  
133 crop fields. The main features of the village of Barry are continuous cropping and livestock  
134 fattening in barns based on purchased feed concentrate and harvested crop residues. Figure 1  
135 shows that livestock fattening is practiced by the large majority of households in the village of  
136 Barry but rarely practiced in Diohine.

137 *Figure 1 about here*

138

## 139 **2.2. The conceptual model of the socio-agro-ecosystem studied**

140 Metabolism is a key concept in industrial ecology. The analysis of industrial metabolism  
141 (Wassenaar, 2015), or territorial metabolism (Barles, 2014), is largely based on the  
142 quantification of material flows to describe the functioning of existing territories and to design  
143 more sustainable territories. This approach has already been used to analyze rural territories  
144 (Bonaudo et al., 2017). The analysis of biomass flows is particularly useful to understand how  
145 complex agricultural systems function and to assess their sustainability (Vayssières et al., 2009).  
146 Integrated landscape analysis distinguishes multiple levels (Minang et al., 2015). The present  
147 study of village *terroirs* is based on a stock-flow conceptual model structured around three  
148 interlocked systems: the plot, the household, and the village *terroir* (Figure 2). The village is  
149 composed of several households, and each household can be divided into four subsystems: the  
150 family, crops and trees, livestock, and organic waste (Figure 2). Livestock usually comprises  
151 several herds.

152



153 *Figure 2 about here*

154

155 The systems are crossed by biomass flows corresponding to the main types of organic  
156 matter circulating within and between farming systems, i.e. crop products (grain, residues, etc.),  
157 livestock (dung, meat, milk, etc.), trees (forage, wood, etc.), as well as household purchases  
158 (human food, feed concentrate, mineral fertilizers, etc.). Three types of biomass flows are  
159 distinguished: inputs, outputs and internal flows. Some outflows at one level (e.g. the plot) are  
160 internal flows at a higher level (e.g. the household; Figure 2).

### 161 **2.3. Data collection and processing**

#### 162 **2.3.1. Household sampling and survey**

163 Data were collected during household surveys conducted from June to August 2013 and  
164 concerned the 2012 cropping season (from June 2012 to May 2013). The exhaustive list of the  
165 households in each village and the population data were extracted from the Niakhar observatory  
166 data base (Delaunay et al., 2013). The surveys in Barry were exhaustive (73 households) but  
167 were conducted on a sample of 44 households, corresponding to the *Sassem* district. In Diohine  
168 which is a large village containing 354 households, the districts are regulated by notables who  
169 are responsible for the management of the natural resources (e.g. the common fallow). *Sassem*  
170 district is representative of Diohine's agricultural activities, practices and access to resources.  
171 Consequently, the observations and analysis of this district presented in this paper can be  
172 considered as representative of the whole village of Diohine.

173 The aim of household surveys is to describe the structure and agricultural practices of  
174 each household and to quantify all household biomass flows, i.e. flows of inputs and outputs to  
175 and from all households, plus flows of inputs and outputs to and from the four subsystems  
176 (family, crops and trees, livestock, organic waste) of each household (Figure 2).

#### 177 **2.3.2. Computing biomass flows**

178 Biomass flows can be human driven or herd driven (ingestion during grazing and  
179 excretion during grazing and night-corralling). Human driven flows were directly quantified  
180 with farmers during surveys using local units of measure (cart, bundle, etc.). These flows were  
181 then converted into standard units (kgDM). Conversion factors were defined by weightings  
182 made during the study or based on data in the literature (Vandermeersch et al., 2013, Appendix  
183 1).

184 Herd-driven flows were derived from information concerning herd feeding practices  
 185 and the time spent between the four land units within the boundaries of the village *terroir*  
 186 (dwelling, home fields, bush fields, rangelands) collected during the surveys. Herd-driven flows  
 187 were calculated (in kgDM season<sup>-1</sup>) for each practical season (wet season, cool dry season, hot  
 188 dry season) defined in section 2.1 above. Free-grazing animals ingest the biomass available in  
 189 plots: crop residues in cultivated fields after harvest and grass growing on common fallow land  
 190 and rangelands all year round. Part of the biomass is returned to the soil via animal excreta.  
 191 Both ingestion and excreta flows were calculated based on coefficients derived from local  
 192 observations (Wade et al., 2017) or on data available in the literature on West Africa (Appendix  
 193 2 and 3).

194 Between-household livestock-driven plant biomass flows were described for each  
 195 household by calculating the free-grazing plant biomass balance ( $\Delta FG$ ) corresponding to the  
 196 difference between (i) inflows by means of intakes by the household herd on external plots  
 197 (AII) and (ii) outflows by means of intakes by external herds on household plots (AIO).

$$\Delta FG = AII - AIO \quad (1)$$

198 AII and AIO were both calculated according to the fodder biomass available for each household  
 199 (AFB) as follows:

$$AFB = ((FP_{p,c} - FH_{p,c}) * C_c) - FN_b \quad (2)$$

$$\text{If } AFB = 0 \text{ then } AII = 0 \text{ and } AIO = 0 \quad (3)$$

$$\text{If } AFB > 0 \text{ then } AII = 0 \text{ and } AIO = AFB \quad (4)$$

$$\text{If } AFB < 0 \text{ then } AII = -AFB \text{ and } AIO = 0 \quad (5)$$

200 where  $FP_p$  and  $FH_p$  are respectively the fodder produced and the fodder harvested per plot  $p$   
 201 defined by the household's practices.  $C_c$  is a consumption coefficient per type of crop  $c$  since  
 202 crop residues are not completely consumed by the livestock.  $FN_b$  is the quantity of crop residues  
 203 needed for each batch  $b$  of animals belonging to the household. The quantity of crop residues  
 204 required is calculated based on the size of the batch, the feeding practices of each batch and the  
 205 standard forage intake per TLU (Appendix 2).

206 Excretion flows between households are described for each household as (i) the amount of  
 207 excretion by the household herd on external plots (AEO in kgDM season<sup>-1</sup>) and (ii) amount of  
 208 excretion by the external herd on plots belonging to the household in kgDM season<sup>-1</sup>). They are  
 209 calculated as follows:

$$AEO = (LU_{b,I} * AT_{b,I} * DR) * (TA_I - A_I) / TA_I \quad (6)$$

$$AEI = (LU_{b,I} * AT_{b,I} * DR) * (A_I) / TA_I \quad (7)$$

210 where  $LU_b$  and  $AT_{b,I}$  are respectively the size of the batch of animals **b** (in TLU) and the length  
 211 of time (in hours) spent by each batch of animals **b** in the landscape concerned, unit **I**. DR is  
 212 the deposition rate (in kgDM TLU<sup>-1</sup> hour<sup>-1</sup>).  $A_I$  is the area of the household's landscape unit **I**  
 213 considered.  $TA_I$  is the total area of the landscape unit **I** in the village *terroir* considered. The  
 214 same two equations (equ. 5 and 6) are applied for urine and dung with their corresponding  
 215 deposition rates DR (Appendix 3). Deposition rates and nitrogen content vary with the season  
 216 (Appendixes 3 and 4).

### 217 **2.3.3. Household typology**

218 To build the household typology, a set of 42 parameters was collected from the 117 households  
 219 These parameters were grouped in three categories: parameters that concern the farming  
 220 features that inform the intensity of crop and livestock activities, i.e., total cultivated area (TCA),  
 221 farm equipment, livestock stocking rate, fattened livestock fattening stocking rate, groundnut  
 222 and fallow TCA rate inflows and outflows); parameters that concern the family (e.g. number  
 223 of household members, age of the household head, number of spouses); the impacts of farming  
 224 practices (i.e. nitrogen and nitrogen use efficiency livestock balances (§ 2.4), free-grazing  
 225 biomass and excreta balances, night corralling balances).

226 Household types were determined by cluster analysis and included the following steps: (i) a  
 227 principal component analysis was performed on the set of variables, (ii) a hierarchical cluster  
 228 analysis was conducted using Ward's method.

229 The principal component analysis procedure (step i) sought uncorrelated linear combinations  
 230 (components) of the original variables. Then, meaningful variables were identified from the  
 231 loadings that measured the contribution of each original variable to the variance of the principal  
 232 component.

233 The hierarchical partitioning (step ii) sought to build clusters using Ward's minimum variance  
 234 criterion that minimizes total within-cluster variance.

235 The final typology represents diverse resource endowments and crop and livestock practices.  
 236 All the households differ in size and in their crop and livestock activities, and the intensity of  
 237 the practices varies according to the type of household. Five types of households were defined:  
 238 Low Resource Endowment- Small Herd (LRE-SH), Medium Resource Endowment- Small

239 Herd (MRE-SH), Medium Resource Endowment- Medium Herd (MRE-MH), High Resource  
240 Endowment- Medium Herd (HRE-MH), High Resource Endowment- Large Herd (HRE-LH).

#### 241 **2.4. Sustainability indicators**

242 Nitrogen is a major limiting factor for agricultural productivity in sub-Saharan Africa,  
243 (Rufino et al., 2009; Schlecht et al., 2006). Biomass flows (in kgDM year<sup>-1</sup>) were converted  
244 into nitrogen flows (in kgN year<sup>-1</sup>) using conversion factors in the literature (Appendix 5). This  
245 study assessed three N-based sustainability indicators: productivity, balance, efficiency at three  
246 levels (plot, household, village *terroir*).

247 Household food security is a major concern on the entire African continent (FAO 2015).  
248 The **productivity** of the agricultural systems is assessed for livestock in kgLW ha<sup>-1</sup> year<sup>-1</sup> and  
249 for crops in kgDM ha<sup>-1</sup> year<sup>-1</sup>. The productivity indicator is also expressed in kgN ha<sup>-1</sup> year<sup>-1</sup>  
250 and kgN capita<sup>-1</sup> year<sup>-1</sup> because sufficient protein availability in the human diet a major problem  
251 in Africa (Duncan et al., 2013; FAO 2015).

252 The nitrogen **balance** (NB) is a relevant sustainability indicator for soil fertility (Manlay  
253 et al., 2004; Roy et al., 2005; Thornton and Herrero, 2001). System-gate nitrogen balances were  
254 calculated as follows:

$$\text{NB} = (\Sigma\text{IN} - \Sigma\text{ON}) / \text{TCA} \quad (8)$$

255 where IN and ON are, respectively, total nitrogen inputs and nitrogen outputs in the system  
256 considered (plot, household or village *terroir*, see section 2.2.). The calculated balances are  
257 partial balances, i.e. they only include horizontal (i.e. apparent) flows and not vertical flows of  
258 N (gaseous emissions, symbiotic fixation, atmospheric deposition, lixiviation and run-off).

259 Nitrogen use **efficiency** (NUE, dimensionless, Dmnl) assesses the “return on investment”  
260 since for each nitrogen unit supplied to the system, it indicates how many nitrogen units are  
261 produced (Vayssières, 2012).

$$\text{NUE} = \Sigma\text{ON} / \Sigma\text{IN} \quad (9)$$

262 Agro-sylvo-pastoral systems in sub-Saharan Africa are traditionally low-input systems  
263 based on the use of natural resources (Vigne et al., 2013). Agricultural intensification is often  
264 based on inputs that considerably modify the system’s **dependency** on external systems.  
265 Dependency corresponds to imports into the system (in kgN capita<sup>-1</sup> year<sup>-1</sup>, (Rufino et al., 2009).  
266 This indicator represents household self-sufficiency (SS) in terms of herd feeding (SSFeed),  
267 and in terms of crop fertilization (SSFert). SSFeed (dmnl) is the fraction of the N feed in the  
268 herd feed ration produced on the farm. SSFert (dmnl) is the fraction of the plot IN fertilizers

269 originating from organic fertilizers produced on-farm (Vayssières et al., 2011). A second  
 270 indicator, **dependency (D)**, only calculated at the village *terroir* level is the ratio of total  
 271 nitrogen inputs (**IN**) to the total system throughflow (**TST**). Total System Throughflow is  
 272 calculated as the difference between the sum of a household's IN flows and village *terroir* IN:

$$D=IN/TST \quad (10)$$

$$TST=\sum IN_h - IN_t \quad (11)$$

273 Household livelihoods are expressed by two economic indicators: gross margin yield  
 274 and agricultural income. The gross margin yield (GMY in € year<sup>-1</sup> ha<sup>-1</sup>) is calculated as the  
 275 gross margin (GM) per area unit, considering the HH TCA (in ha), as follows:

$$GMY=GM/TCA \quad (12)$$

$$GM= (MP_{cb} * MPr_{cb}) - (MS_{cb} * MPr_{cb}) \quad (13)$$

276 where MP<sub>cb</sub> and MS<sub>cb</sub> are, respectively, the amount of biomass purchased and the amount of  
 277 biomass sold per category of biomass **cb**. MPr<sub>cb</sub> is the price of each category of biomass. The  
 278 price of each input (mineral fertilizers, pesticides, seeds, human food, fuel, fodder, feed  
 279 concentrate, number of animals) and outputs (wood, fodder, main crop products, milk, number  
 280 of animals sold or given away) was collected during the surveys. The price obtained for an  
 281 animal depends on its physical condition: fattened animals from in-barn herds fetch higher  
 282 prices than animals from free-grazing herds (Appendix 6).

283 The agricultural income (AI in € year<sup>-1</sup>) also includes additional fixed costs:

$$AI= GM - [Nb_e \times (MC_e + DC_e)] \quad (14)$$

284 where MC<sub>e</sub> and DC<sub>e</sub> are maintenance costs and depreciation, respectively. These cost are listed  
 285 for each type of farm equipment **e** (Appendix 7).

286 At plot level, non-parametric statistic tests were performed on village *terroir*  
 287 independent samples. Student's t test, Fisher's F test were performed to see if the results differed  
 288 significantly. The Mood test was used to compare medians of k independent samples. This test  
 289 makes no assumptions concerning the distribution of the measurements- and can be considered  
 290 as a special case of the Pearson Khi<sup>2</sup> test.

### 291 **3. Results**

#### 292 **3.1. Organization of the two village terroirs**

293 **3.1.1. Spatial organization**

294 Diohine is an old village whose dwellings are concentrated and organized in districts.  
295 The dwellings in Barry are fragmented and dispersed as a result of multiple waves of population  
296 arrivals. Diohine is consequently governed by a “district hierarchy” while Barry is characterized  
297 by a strong “holding hierarchy”.

298 Diohine’s *terroir* is surrounded by 67 ha of lowlands that represent 24% of the total area  
299 of the village *terroir*) and have traditionally been used as rangelands that insure the free-grazing  
300 herds do not need to leave the village *terroir*. Conversely, Barry *terroir* has no lowlands, ponds  
301 or wooded savannah within its traditional boundaries (Figure 3).

302 *Figure 3 about here*

303 **3.1.2. Humans, livestock and land use**

304 Human population pressure is lower (180 capita km<sup>-2</sup>) in Diohine than in Barry  
305 (320 capita km<sup>-2</sup>) as is the livestock stocking rate (0.96 TLU year ha<sup>-1</sup> in Diohine compared  
306 with 2.31 TLU year ha<sup>-1</sup> in Barry). In Diohine, an extensive livestock system still exists. Based  
307 on traditional rules, each year, 20% of the TCA is kept as fallow for grazing in the wet season.  
308 Barry has only a few isolated fallow plots resulting from decisions made by individual  
309 households following failed cropping.

310 Millet is still the main crop in both village *terroirs*, where it represents 53% of the TCA  
311 in Diohine and 55% in Barry. Groundnuts represent only 7% of the TCA in Diohine whereas  
312 in Barry they represents 30%.

313 **3.1.3. Household diversity**

314 Households in both villages were classified in five types. The main discriminant  
315 variables were the ratio of livestock to cropping activities (i.e., the livestock stocking rate)  
316 and the relative importance of subsistence and cash crop and livestock activities (Table 1).

317 *Table 1 about here*

318 Two of the household types use extensive and subsistence oriented systems: the “Medium  
319 Resources Endowment-Small Herd” (MRE-SH, type 2) and the “High Resources Endowment-  
320 Medium Herd” (HRE-MH, type 4). Both household types have large fallow land and large free-  
321 grazing herds; only a small percentage of the herd is fattened (on average 15% of the herd in  
322 type 2 and 3% in type 4). These two types of household depend on their *terroir*’s communal  
323 resources (crop residues, fallows and rangeland fodder, and wooded parkland). Type 4 is only  
324 represented in Diohine, and more type 2 are found in Diohine than in Barry.

325 Two of the household types are semi-intensive and cash oriented systems: the “Medium  
326 Resource Endowment- Medium Herd” (MRE-MH, type 3) and the “High Resource  
327 Endowment- Large Herd” (HRE-LH, type 5). Both focus on commercial production (groundnut  
328 and livestock fattening) and both types are only represented in Barry. The proportion of  
329 livestock fattening activity is higher in type 5. Type 5 also supports the highest human  
330 population density (6.3 capita.ha<sup>-1</sup>; Table 1).

331 The “Low Resource Endowment- Small Herd” (LRE-SH, type 1) comprises households with  
332 limited TCA (average: 3.8 ha) and few livestock. Type 1 is involved in intensification, and  
333 trying to invest in groundnuts and/or livestock fattening. This type is the second most common  
334 type, and is more frequent in Barry where household individualization is more dynamic (Table  
335 1).

336 Two household types are particularly involved in livestock rearing: type 4 in Diohine and type  
337 5 in Barry. The average livestock stocking rate is 3.6 TLU ha<sup>-1</sup> under type 4 and 3.7 TLU ha<sup>-1</sup>  
338 under type 5. HRE-MH (type 4) fatten almost none of their livestock (3% of total TLU) and  
339 mostly practice free grazing. Conversely, HRE-LH (type 5) fatten 59% of their herd. The  
340 animals are kept in barns and are stall-fed with feed concentrate and harvested crop residues.

341 Analysis of household biomass flows showed that the majority of crop residues  
342 produced on-farm are grazed (type 4) or harvested (type 5) to feed the herds. The  $\Delta$ FG of HRE-  
343 MH (type 4) was positive (3451 kgDM ha<sup>-1</sup> year<sup>-1</sup>), showing that household herds consume  
344 forage in plots belonging to other households, particularly plots belonging to MRE-SH (type 2)  
345 who have a low livestock stocking rate and a negative  $\Delta$ FG (-225 kgDM ha<sup>-1</sup> year<sup>-1</sup>). HRE-MH  
346 (type 4) thus benefits from these biomass transfers with the highest dung inputs taking place  
347 during night corralling (+758 kgDM ha<sup>-1</sup>). Similarly, type 5 buys crop residues (mainly  
348 groundnut hay) from types MRE-SH (type 2) or LRE-SH (type 1), meaning types 4 and 5  
349 extract nutrients from plots belonging to other households that are deposited on their own plots  
350 thanks to night corralling (type 4) or through the spreading of solid manure (type 5). HRE-MH  
351 (type 4) also provides night corralling to other households with limited manuring capacity (e.g.  
352 type 1). According to traditional rules, this agreement gives type 4 the opportunity to borrow  
353 external lands the following year (Odrú, 2013).

## 354 **3.2. Farming systems**

### 355 **3.2.1. Crop-livestock coordination across seasons**

356 Livestock farming and cropping practices in the two villages can be described based on  
357 their seasonal practices (Figure 4).

358 *Figure 4 about here*

359 During the cropping season, i.e. the wet season and the beginning of the cool dry season,  
360 livestock can damage crops. Consequently, some of the ruminants (bovine, ovine, goats) are  
361 removed from the village *terroir* for transhumance to sylvo-pastoral regions of Senegal, for  
362 example, the Saloum and Ferlo regions. The remaining livestock are kept away from crops in  
363 the lowlands and common fallows in Diohine (Figure 3). As a result, Diohine supports a bigger  
364 free-grazing herd during the wet season than Barry (0.56 TLU ha<sup>-1</sup> in Diohine versus 0.35 TLU  
365 ha<sup>-1</sup> in Barry). On the other hand, Barry strongly invests in livestock fattening (0.57 TLU ha<sup>-1</sup>  
366 in Barry versus 0.01 TLU ha<sup>-1</sup> in Diohine;). This livestock system reduces direct interactions  
367 between livestock and cropping since the livestock are kept in barns within the holding and a  
368 large proportion of the feed ration is supplied in the form of harvested crop residues and feed  
369 concentrate (e.g. complete concentrates, millet bran, rice bran) purchased outside the village  
370 *terroir*.

371 During the second part of the cool dry season and in the hot dry season, as the main crop  
372 products have been harvested, livestock can move freely throughout the whole village *terroir*.  
373 Free-grazing ruminants start to consume crop residues left in the fields and at night, are  
374 corralled on selected plots. In Diohine, during the cool dry season, free-grazing herds graze  
375 crop residues on plots in home fields, where the residues are more abundant. During the first  
376 part of the hot dry season, herds free-graze crop residues in bush fields and fodder resources in  
377 the lowlands. During the second part of the hot dry season, herds consume crop residues stored  
378 for the purpose by the farmers, who prune trees, mainly *Faidherbia albida*, for fodder (Odru,  
379 2013).

380 The ovine fattening period targets Muslim religious events such as *Tabaski*, when the  
381 demand for live sheep for sacrificial purposes is massive. Bovine fattening is spread out over  
382 the entire dry season to produce off-season meat, which requires off-season labor and allows  
383 farmers to take advantage of fluctuations in market prices. Diohine opted for “finishing” bovine  
384 livestock fattening, i.e., some animals are extracted from the transhumance herds to be fattened,  
385 whereas Barry opted for “purchase-resale” livestock fattening.

### 386 **3.2.2. Fertilization of cropland**

387 Herds' excreta (during free grazing or night corraling), solid manure and mineral  
388 fertilizer inflows represent the three main N inputs to the plots. They total 83% of N input flows  
389 (IN) at plot level in Diohine and 79% in Barry, the remainder being household waste, seeds and  
390 feed refusals by livestock.



391

*Table 2 about here*

### 392 **3.2.2.1. Direct deposition of excreta during free grazing and night corralling**

393 The deposition of livestock excreta during free-grazing (excluding night corralling)  
394 represents 46% of the total plot IN in Diohine versus 25% in Barry (Table 2). In the **dry season**,  
395 in Diohine, a large proportion of by-products is left for **free-grazing** herds. In terms of N flows,  
396 biomass extraction (crop residues or grass) is barely returned via feces and urine (the balance  
397 of livestock-driven flows at plot level is on average +0.55 kgN ha<sup>-1</sup> Table 2). In contrast, in  
398 Barry, the free grazing practice results in a positive balance of livestock-driven flows (on  
399 average +5.04 kg N ha<sup>-1</sup> Table 2) since the livestock stocking rate is high and livestock feed is  
400 supplemented with feed concentrate. Feed concentrates represent on average, 30% of the feed  
401 ration in terms of N in Barry. Indeed, cash oriented households (MRE-MH and HRE-LH), two  
402 types of households only represented in Barry, harvest most crop by-products on their fields  
403 and supplement their animals' rations with feed concentrate, resulting in the highest free-  
404 grazing and night corralling balance (+8.43 and +9.93 kgN ha<sup>-1</sup> for MRE-MH and HRE-LH  
405 respectively, Table 1).

406 During the **wet season**, the common fallow practiced in Diohine results in a negative average  
407 nitrogen balance in livestock-driven flows at plot level: -8.32 kgN ha<sup>-1</sup> (Table 2). Nevertheless,  
408 the higher livestock stocking rate in Diohine than in Barry in the wet season, results in a higher  
409 proportion of TCA benefitting from wet season **night corralling** (Table 2). The deposition of  
410 excreta in the wet season is also more intensive in Diohine (Table 2). Conversely, in the **dry**  
411 **season, night corralling** accounts for higher proportion of TCA in Barry and is more intensive  
412 (Table 2).

### 413 **3.2.2.2. Application of solid manure**

414 Solid manure represents 14% of the total plot level IN in Diohine and 12% in Barry (Table  
415 2). The average rate of solid manure application is higher in Barry (482 kgDM ha<sup>-1</sup>) than in  
416 Diohine (337 kgDM ha<sup>-1</sup>) (Table 2). Furthermore, the households in Barry *terroir* are better  
417 equipped with horse and donkey carts (86% of households in Barry own a cart versus only 48%  
418 in Diohine). The higher equipment rate combined with higher solid manure availability results  
419 in better spatial distribution of solid manure, since a larger proportion of the TCA is manured;  
420 31% of the TCA is manured each year in Barry versus 22% in Diohine (Table 2).

### 421 **3.2.2.3. Application of mineral fertilizers**

422 Application of mineral fertilizer accounts for most of the plot inputs in Barry (27% of  
423 IN in Barry versus 8% Diohine) (Table 2). Mineral fertilizers are applied to a bigger proportion

424 of the land in Barry (26% of the TCA) and fertilization is also more intensive, the average  
425 application rate in Barry is more than five times higher than in Diohine (Table 2).

### 426 **3.3. Sustainability of the two village terroirs**

427 This section presents the main differences in the sustainability indicators at the level of  
428 the village *terroir*. Indicators are sometimes also provided at household level to make the  
429 differences between the villages more explicit.

#### 430 **3.3.1. Productivity**

431 The yields of the main crops are significantly higher for cereals (millet and sorghum) in  
432 Barry whereas groundnut yields are similar in the two villages (Table 3). With the exception of  
433 legume hay, total yields of straw are substantially higher in Barry (Table 3). Farmers in Barry  
434 harvest a bigger proportion of crop residues to stall-feed their own livestock (Table 3).

435 *Table 3 about here*

436 Meat production is 720% higher (252 kgLW ha<sup>-1</sup> year) in Barry than in Diohine  
437 (35 kgLW ha<sup>-1</sup> year<sup>-1</sup>). Total livestock sales and sales of crop-related products are much higher  
438 in Barry (13 kgN capita<sup>-1</sup> in Barry versus 1 kgN capita<sup>-1</sup> in Diohine).

#### 439 **3.3.2. Dependency**

440 Diohine inhabitants tend toward on-farm consumption and recycling of local biomass  
441 resources (crop residues, dung and wooded parkland) while the inhabitants of Barry favor  
442 exports-imports based on the use of inputs. Considering that the purchase of human food is  
443 similar in the two villages (1.66 kgN capita<sup>-1</sup> in Barry and 1.62 kgN capita<sup>-1</sup> in Diohine), the  
444 main difference in IN is due to the purchase of feed concentrate and mineral fertilizer, with  
445 significantly higher inflows of this type in Barry (Table 4). Consequently, self-sufficiency rates  
446 for feed and fertilizers are higher in Diohine (see SSFeed and SSFert in Table 4) resulting in a  
447 lower dependence (D is 2.03 in Diohine versus 12.66 in Barry; Table 4).

448 *Table 4 about here*

#### 449 **3.3.3. Nitrogen cycling, balance and efficiency**

450 Livestock farming activities play a determinant role in the functioning of both village  
451 *terroirs* since they represent 52% of total crop fertilization IN flows in Barry and 75% in  
452 Diohine (Table 2). As the livestock systems differ markedly in the two villages, flows linked to  
453 free grazing (free-ranging deposition of excreta and plant withdrawal, deposition during night  
454 corralling) are highest in Diohine (TST>IN, Table 4), while inflows and outflows linked to

455 livestock related (livestock, fodders, concentrate feeds) are highest in Barry (TST<IN) (Table  
456 4).

457 Household practices and household functioning lead to higher nitrogen balance at village terroir  
458 level (25 kgN ha<sup>-1</sup> for Barry and 9 kgN ha<sup>-1</sup> for Diohine) and to a higher average at household  
459 level in Barry (24 kgN ha<sup>-1</sup>) than in Diohine (13 kgN ha<sup>-1</sup>). Households with livestock-oriented  
460 farming system seem to have higher nitrogen balance at household level. For instance, MRE-  
461 SH households (type 2) and HRE-LH households (type 5) have respectively the lowest and the  
462 highest stocking rates (Table 1) and nitrogen balance at household level (-0.2 kgN ha<sup>-1</sup> and  
463 151.0 kgN ha<sup>-1</sup> respectively).

464 At plot level, the average and median nitrogen balance at plot level do not differ significantly  
465 between the two village *terroirs* (average nitrogen balances at plot level are -23 kgN.ha<sup>-1</sup> in  
466 Barry and -20 kgN.ha<sup>-1</sup> in Diohine).

467 Flows in Barry are more intense with 7 times higher inflows (IN) and 35 times higher  
468 outflows (ON; Table 4). Consequently, the NUE in Barry is 4 times higher than in Diohine at  
469 the level of the village *terroir* (Table 4).

#### 470 **3.3.4. Profitability**

471 The average household agricultural income (AI) is positive in both villages but is 19%  
472 higher in Barry (2 292 € year<sup>-1</sup>) than in Diohine (1 850 € year<sup>-1</sup>). Households with limited  
473 resources and small herds have the lowest agricultural income (1 028 € year<sup>-1</sup>), while the highest  
474 income is obtained by households with ample resources and large herds (3 795 € year<sup>-1</sup>; Figure  
475 5).

476 *Figure 5 about here*

477

478 Considering the gross margin yields, the average results are negative (-214€ year<sup>-1</sup> ha<sup>-1</sup>  
479 <sup>1</sup>). In contrast to AI, this calculation includes the purchase of human food. Different patterns  
480 are observed depending on the type of household. Like AI, household with small herds have  
481 the lowest gross margin yield (-415€ year<sup>-1</sup> ha<sup>-1</sup>) while households with large herds and  
482 sufficient resource endowment have the best results (-91€ year<sup>-1</sup> ha<sup>-1</sup>; Figure 6).

483

*Figure 6 about here*

### 484 **4. Discussion**

#### 485 **4.1. Traditional extensive systems face a number of limitations**

486 The results of this study are consistent with those of other studies on nutrient cycling in  
487 sub-Saharan Africa. The nitrogen balance at plot level is generally negative: -23 kgN ha<sup>-1</sup> for

488 Barry and  $-20 \text{ kgN ha}^{-1}$  for Diohine, and  $-15 \text{ kgN ha}^{-1}$  on average for West Africa (Schlecht and  
489 Hiernaux, 2004), range:  $-37 \text{ kgN ha}^{-1}$  (Stoorvogel and Smaling, 1990) to  $3 \text{ kgN ha}^{-1}$  (Krogh,  
490 1997), indicating that crop production depends to a large extent on mining the soil organic  
491 nitrogen reserve (Smaling et al., 1997; Waneukem and Ganry, 1992). In the traditional  
492 extensive system, nutrient exports were traditionally counterbalanced by livestock-based  
493 nutrient transfers from rangelands and fallows to croplands (Bisson et al., 2019). But the  
494 negative nitrogen balances indicate that these systems are no longer sustainable. When the  
495 uncultivated area (fallows and rangelands) is too small, the nitrogen transfers generated by the  
496 free grazing ruminants do not compensate for the export of crop biomass. This is the case in  
497 Diohine where the livestock-driven nitrogen balance in common fallows is negative (§ 3.2.2.1).  
498 From a social point of view, interviews indicated that the traditional system is likely to  
499 disappear since the collective fallow system is very demanding in terms of social organization  
500 and is called into question by different dynamics including household individualization (§ 1.).  
501 This is consistent with the dynamics observed in other sub-Saharan contexts, for example, the  
502 appropriation of the organic matter resource (Andrieu et al., 2015). In the new semi-intensive  
503 systems (Barry), nutrient mining is offset by external inputs, mainly in the form of feed  
504 concentrate in the livestock fattening system, which reintroduces nutrients in the households  
505 and in the village *terroirs*.

#### 506 **4.2. Livestock intensification seems to be a sustainable intensification pathway**

507 The main indicators of *terroir* sustainability are shown in a radial diagram (Figure 7) in  
508 which the traditional system (Diohine) is the reference system. The sustainability of each  
509 village *terroir* corresponds to the surface area delineated by the lines linking each indicator's  
510 value. The semi-intensive system (Barry) is more sustainable, as the majority of indicators (7  
511 out of 9) are higher for this village *terroir*.

512 The system based on livestock fattening is more efficient: nitrogen use efficiency (NUE)  
513 is 4 times higher in Barry) and the nitrogen balance in Barry is positive and higher ( $+16.37 \text{ kgN}$   
514  $\text{ha}^{-1} \text{ year}^{-1}$  at the *terroir* level; Table 4). The livestock fattening-based system produces higher  
515 average millet yields, millet being the main crop in both villages (Figure 7), i.e. an additional  
516  $+101 \text{ kgDM ha}^{-1}$  of ears and  $+595 \text{ kgDM ha}^{-1}$  of millet straw (§ 3.3.1).

517 *Figure 7 about here*

518 Gains in yields of crop residues and additional imported concentrate feeds ( $+20.3 \text{ kgN ha}^{-1} \text{ year}^{-1}$   
519  $^1$  in Barry) support a higher livestock stocking rate (§ 3.1.2)., which, in turn, results in higher  
520 organic matter availability and use in Barry ( $+145 \text{ kgDM ha}^{-1}$ ). It also increases meat production

521 by +217 kgLW ha<sup>-1</sup>. Meat sales produce an additional cash flow that is used for both crop and  
522 household inputs (i.e. mineral fertilizer and human food purchase respectively, Table 4). All in  
523 all, this system provides an additional +58.7 kgN ha<sup>-1</sup> year<sup>-1</sup> of inputs at village *terroir* level,  
524 which is a major advantage, because the soils in sub-Saharan Africa are poor in nutrients and  
525 most systems are soil mining systems.

526 In both Diohine and Barry villages, gross margin yields are negative (§ 3.3.5), leading to the  
527 assumption that some household expenditures are covered by off-farm activities, as reported in  
528 other studies conducted by the Niakhar observatory (Maffray, 2014; Reiff and Gros, 2004).  
529 Nevertheless, agricultural income (AI) is 24% higher in Barry. Higher incomes and higher meat  
530 and crop yields make it possible to maintain a 78% higher population density in Barry than in  
531 Diohine (§ 3.1.2). These results confirm the hypothesis proposed by Duncan et al. (2013):  
532 livestock fattening-based systems could be way to reduce rural exodus.

533         Semi-intensive livestock production (fattening or off-season milk production) has  
534 already been identified as a relevant option to offset declining cash crop markets in a range of  
535 different contexts in sub-Saharan Africa (e.g. Mali, Burkina Faso, Madagascar) (de Ridder et  
536 al., 2015). In the groundnut basin in Senegal, the incentives for groundnut cultivation declined  
537 drastically in the 1970s leading to the rapid reduction in the cultivation of this cash crop and in  
538 the use of mineral fertilizers (Lericollais, 1999). Livestock fattening favors the cultivation of  
539 cash crops, since the economic gains from livestock rearing are partially invested in inputs like  
540 seeds and fertilizers (§ 3.1.2). In the present study, the livestock fattening system appears to be  
541 a promising option for agricultural intensification. The expected increase in the demand for  
542 meat and milk in sub-Saharan Africa represents an opportunity to increase the attractiveness  
543 and sustainability of rural areas if livestock intensification is developed.

#### 544 **4.3. Better manure management practices would increase the benefits of higher nutrient** 545 **inputs in the semi-intensive system**

546         This study confirmed that solid manure is a key resource for the sustainable  
547 intensification of agricultural systems in sub-Saharan Africa (Rufino et al., 2011) as the use of  
548 mineral fertilizers is still limited in the Senegalese villages studied here (1.09 kgN ha<sup>-1</sup> in  
549 Diohine and 6.28 kgN ha<sup>-1</sup> in Barry). Section 3.3.3 underlined gaps in the nitrogen balance  
550 depending on the level of analysis (§ 3.3.3). Indeed, the nitrogen balance is generally negative  
551 at plot level and positive at household and village *terroir* levels. This result is consistent with  
552 those of other studies in sub-Saharan Africa (Diarisso et al., 2015). Our in-depth analysis of N  
553 flows in farming systems (at the household level) in the two study village *terroirs* explains these

554 differences in the nitrogen balance by inefficient use of organic fertilizers produced by  
555 livestock: urine and solid manure. In both villages, some of the N produced on-farm  
556 accumulates in the holdings and is not applied to the plots. Differences between N balances at  
557 plot and village *terroir* levels are even bigger in Barry (§ 3.3.3) where solid manure recycling  
558 is less efficient. Our analysis of N flows at household level indicates that recycling of solid  
559 manure depends to a great extent on the type of household (§ 3.1.3). Paradoxically, the more  
560 solid manure that is available, the less is applied per TLU. What is more, the efficient use of  
561 solid manure depends to a great extent on the orientation of the household's farming activities.  
562 For instance, in Barry, households that focus on the livestock trade (the HRE-LH, type 5), do  
563 not pay much attention to cropping and nor efficiently recycle solid manure, as they use the  
564 income they obtain by fattening livestock to buy a large part of their human food. In contrast,  
565 households that focus on both trading livestock and growing cash crops such as MRE-MH, type  
566 3, recycle solid manure more efficiently. These results are consistent with those of other studies  
567 conducted in sub-Saharan Africa (Dugue, 1998; Rufino et al., 2009; Schlecht et al., 2006).

568 The transition from the extensive system, (i.e., that used in Diohine village) where  
569 excreta is directly deposited on fields by livestock, to the semi-intensive system (i.e., that used  
570 in Barry village) where solid manure is collected, stored, matured and spread on the fields by  
571 humans, calls for new knowledge and means of production to enable more efficient use of solid  
572 manure. Indeed, opportunities to improve crop-livestock integration and soil fertility were  
573 identified with local stakeholders during participatory workshops (Audouin et al., 2018).  
574 Audouin (2015), the environmental, technical and economic impacts of the most promising  
575 option were evaluated for both villages: improvement of solid manure recycling by increasing  
576 solid manure transport capacity (i.e. more horse drawn carts) and the creation of manure pits  
577 like those experimented in Burkina Faso (Blanchard et al., 2011).

578

#### *Appendix 8*

579 This evaluation revealed more opportunities for improvement in households with higher  
580 livestock stocking rates and where livestock-fattening activities predominate (Appendix 8).

#### **581 4.4. Use of feed concentrate increases system dependency but also improves its resilience 582 in the face of local climate variability**

583 However, livestock fattening-based systems still require large amounts of imported feed to  
584 maintain a high livestock stocking rate (2.31 UBT ha<sup>-1</sup>). All the farmers in Barry import a total  
585 of 411 \* 10<sup>3</sup> kgDM of feed concentrate annually (§ 3.3.2.) thereby increasing the dependence  
586 of village *terroir* on external inputs, which is 6.7 times higher in Barry than in Diohine.

587 The use of feed concentrate is questionable. While it reduces household autonomy and  
588 exposes the households to fluctuations in the price of cereals and industrial by-products, it also  
589 reduces the pressure created by the production system on local natural resources (e.g. soil and  
590 trees) and renders them less sensitive to local climate hazard (Grillot et al., 2018b). Indeed, in  
591 a traditional system (such as Diohine) the wooded parkland is subject to high pressure to feed  
592 livestock in dry years to counterbalance the shortage of crop residues (§ 3.2.1.). The  
593 sustainability of traditional systems is thus called into question during long periods of drought.  
594 This was the case during the droughts in the 1970s and 1980s that led to the decline of  
595 *Faidherbia albida* parklands (Ndiaye et al., 2016). In a livestock fattening-based system (such  
596 as that in Barry), the lack of fodder in dry years has less impact since feed concentrates account  
597 for most of livestock's feed ration. In a context of rapid climate change and marked climate  
598 uncertainty (Roudier et al., 2011) as well as ongoing land saturation (Dongmo et al., 2012),  
599 livestock fattening is attractive because the animals are kept in barns and stall-fed using feed  
600 resources most of which are imported from outside the villages.

601

## 602 **5. Conclusion**

603 This article reports the results of comparative analysis of two existing village *terroirs* that  
604 use contrasted agricultural systems based on different livestock activities. The system used in  
605 the village of Diohine is close to the *Serer's* traditional agro-sylvo-pastoral system organized  
606 around grazing livestock and common fallow. The system used in the second village, Barry, is  
607 organized around stall-fed livestock fattening.

608 Diohine is an old village *terroir* where the intergenerational social hierarchy plays a  
609 predominant role in the collective management of local resources. Rangelands and common  
610 fallow play a key role in supporting the mobile livestock that drive biomass and nutrient  
611 transfers in the landscape. But limited extent of rangelands result in insufficient nutrient  
612 transfers from rangelands to croplands that no longer compensate for the export of nutrients in  
613 the form of grains and residues from crop fields. This calls the sustainability of this traditional  
614 system into question.

615 Barry village *terroir* is more recent. It has evolved toward a more individual and intensive  
616 resource management system, in which the use of feed concentrate and mineral fertilizer plays  
617 an important role. Feed concentrate for livestock fattening represent a major household N  
618 inflow. The livestock fattening system enables higher sustainability in terms of productivity,  
619 profitability, and soil fertility (i.e. the nitrogen balance). Indeed, this systems enables a higher  
620 livestock stocking rate, which, in turn, makes organic matter more available, leading to higher

621 crop and livestock N productivity (+39 % for crop main products, +45 % for crop by-products,  
622 +720% for meat). Additional cash flows (+24%) make it possible to increase crop and  
623 household inputs (mineral fertilizers and human food) resulting in a 2.93 times higher village  
624 *terroir* N balance and a 78% higher population density.

625 This study reinforces the hypothesis that livestock fattening is a promising pathway for the  
626 sustainable intensification of agricultural systems in rural areas in sub-Saharan Africa, and  
627 hence to reduce rural exodus. However, the increased quantities of solid manure that would  
628 then become available need be used more efficiently, by increasing its return and its benefits to  
629 crops, and by reinforcing crop-livestock integration. The main limitation of the system based  
630 on livestock fattening is that imports of feed concentrates increase the dependency of  
631 households and villages on external inputs and hence their sensitivity to fluctuating market  
632 prices; on the other hand, livestock fattening reduces the pressure on local natural resources and  
633 reduces sensitivity to local climate variability.

#### 634 **Acknowledgements**

635 The authors thank the 117 surveyed farmers for their availability and their interest in the  
636 study. They also thank Ibrahima Thiaw and Mamadou Lamine Ndiaye, cartography students at  
637 Dakar Cheikh Anta Diop University (UCAD), who performed parts of plot georeferencing and  
638 produced the maps used in this article. This research was supported by the European Union  
639 [grant number FP7-KBBE-2010 AnimalChange project]; and the French national research  
640 agency [grant number ANR-13-Agro-002 Cerao project].

#### 641 **References**

- 642 Adjamagbo, A., Delaunay, V., Lévi, P., Ndiaye, O., 2006. Comment les ménages d'une zone  
643 rurale du Sénégal gèrent-ils leurs ressources ? *Etud. Rurales* 69–90.  
644 <https://doi.org/10.4000/etudesrurales.8278>
- 645 Alvarez, S., Rufino, M.C., Vayssières, J., Salgado, P., Tiftonell, P., Tillard, E., Bocquier, F.,  
646 2014. Whole-farm nitrogen cycling and intensification of crop-livestock systems in the  
647 highlands of Madagascar: An application of network analysis. *Agric. Syst.* 126, 25–37.
- 648 Andrieu, N., Vayssières, J., Corbeels, M., Blanchard, M., Vall, E., Tiftonell, P., 2015. From  
649 farm scale synergies to village scale trade-offs: Cereal crop residues use in an agro-pastoral  
650 system of the Sudanian zone of Burkina Faso. *Agric. Syst.* 134, 84–96.
- 651 Audouin, E., Vayssières, J., Bourgoïn, J., Masse, D., 2018. Identification de voies  
652 d'amélioration de la fertilité des sols par atelier participatif, in: DELAUNAY, V.,  
653 DESCLAUX, A., SOKHNA, C. (Eds.), Niakhar, Mémoires et Perspectives- Recherches  
654 Pluridisciplinaires Sur Le Changement En Afrique. IRD Éditions/L'Harmattan, pp. 337–



655 371.

656 Audouin, E., Vayssières, J., Odru, M., Masse, D., Dorégo, S., Delaunay, V., Lecomte, P., 2015.

657 Réintroduire l'élevage pour accroître la durabilité des terroirs villageois d'Afrique de

658 l'Ouest Le cas du bassin arachidier au Sénégal, in: Sultan, B., Lalou, R., Oumarou, A.,

659 Sanni, M.A., Soumare, A. (Eds.), *Les Sociétés Rurales Face Aux Changements*

660 *Environnementaux En Afrique de l'Ouest*. Marseille, France, pp. 403--427.

661 Badiane, A.N., Khouma, M., Sene, M., 2000. Région de Diourbel: Gestion des sols. Drylands

662 Research Working Paper 15, Drylands Research. Somerset, England.

663 Barles, S., 2014. L'écologie territoriale et les enjeux de la dématérialisation des sociétés :

664 l'apport de l'analyse des flux de matières. *Développement durable Territ.*

665 <https://doi.org/10.4000/developpementdurable.10090>

666 Bénagabou, O.I., Blanchard, M., Bougouma Yaméogo, V.M.C., Vayssières, J., Vigne, M., Vall,

667 E., Lecomte, P., Nacro, H.B., 2017. L'intégration agriculture-élevage améliore-t-elle

668 l'efficacité, le recyclage et l'autonomie énergétique brute des exploitations familiales

669 mixtes au Burkina Faso? *Rev. Elev. Med. Vet. Pays Trop.* 70, 31.

670 <https://doi.org/10.19182/remvt.31479>

671 Bernard, F., 2015. What can climate-smart agricultural landscapes learn from the gestion de

672 terroirs approach?, in: Minang, P. A., van Noordwijk, M., Freeman, O. E., Mbow, C., de

673 Leeuw, J., & Catacutan, D. (Ed.), *Climate- Smart Landscapes: Multifunctionality in*

674 *Practice*. Nairobi, Kenya, pp. 51–61.

675 Bisson, A., Boudsocq, S., Casenave, C., Barot, S., Manlay, R.J., Vayssières, J., Masse, D.,

676 Daufresne, T., 2019. West African mixed farming systems as meta-ecosystems: A source-

677 sink modelling approach. *Ecol. Modell.* 412, 108803.

678 <https://doi.org/10.1016/j.ecolmodel.2019.108803>

679 Blanchard, M., Koutou, M., E., V., Bognini, S., 2011. Comment évaluer un processus

680 innovant? Cas de l'amélioration quantitative et qualitative de la fumure organique au

681 champ. *Rev. d'élevage médecine vétérinaire en pays Trop.* 64, 61--72.

682 Bonaudo, T., Billen, G., Garnier, J., Barataud, F., Bognon, S., Dupré, D., Marty, P., 2017.

683 Analyser une transition agro-alimentaire par les flux d'azote : Aussois un cas d'étude du

684 découplage progressif de la production et de la consommation. *Rev. d'Économie*

685 *Régionale Urbaine* Décembr, 967. <https://doi.org/10.3917/rru.175.0967>

686 Buldgen, A., Detimmerman, F., Piriaux, M., Compere, R., 1992. Les techniques d'embouche

687 de moutons en région soudano-sahélienne sénégalaise. *Nutr. Aliment.* 35, 321–328.

688 Courtin, F., Guengant, J.P., 2011. Un siècle de peuplement en Afrique de l'Ouest. *Natures Sci.*

689 Sociétés 19, 256–265.

690 de Ridder, N., Sanogo, O.M., Rufino, M.C., van Keulen, H., Giller, K.E., 2015. Milk: the new  
691 white gold? Milk production options for smallholder farmers in Southern Mali. *Animal* 9,  
692 1221–1229. <https://doi.org/10.1017/S1751731115000178>

693 Delaunay, V., Douillot, L., Diallo, A., Dione, D., Trape, J.F., Medianikov, O., Raoult, D.,  
694 Sokhna, C., 2013. Profile: The Niakhar Health and Demographic Surveillance System. *Int.*  
695 *J. Epidemiol.* 42, 1002–1011.

696 Delaunay, V., Lalou, R., 2012. Culture de la pastèque, du sanio et pratique de l’embouche  
697 bovine dans la zone d’étude de Niakhar. Enquête légère juin 2012, rapport d’analyse.  
698 Dakar, Sénégal,.

699 Diarisso, T., Corbeels, M., Andrieu, N., Djamen, P., Tittonell, P., 2015. Biomass transfers and  
700 nutrient budgets of the agro-pastoral systems in a village territory in south-western  
701 Burkina Faso. *Nutr. Cycle Agroecosystem* 21p.

702 Dongmo, A.L., Vall, E., Dugue, P., Njoya, A., Lossouarn, J., 2012. Designing a process of co-  
703 management of crop residues for forage and soil conservation in Sudano-Sahel. *J. Sustain.*  
704 *Agric.* 36, 106–126.

705 Dugue, P., 1998. Les transferts de fertilité dus à l’élevage en zone de savane. *Agric.*  
706 *développement* 18, 99–107.

707 Dugue, P., 1985. L’utilisation des résidus de récolte dans un système agro-pastoral sahélo-  
708 soudanien au Yatenga (Burkina Faso). *Cah. la Rech.* 7, 28–37.

709 Dugue, P., Vayssières, J., Chia, E., Ouedraogo, S., Havard, M., Coulibaly, D., Nacro, H.B.,  
710 Sissoko, F., Sangare, M., Vall, E., 2012. L’intensification écologique : réflexions pour la  
711 mise en pratique de ce concept dans les zones de savane d’Afrique de l’Ouest., in: Vall,  
712 E., Andrieu, N., Chia, E., Nacro, H.B. (Eds.), *Actes Du Séminaire ASAP, Partenariat,*  
713 *Modélisation, Expérimentation : Quelles Leçons Pour La Conception de l’innovation et*  
714 *l’intensification Écologique.* Bobo-Dioulasso, Burkina Faso, p. 15 p.

715 Duncan, A.J., Tarawali, S.A., Thorne, P.J., Valbuena, D., Descheemaeker, K., Homann-Kee  
716 Tui, S., 2013. Integrated crop-livestock systems – a key to sustainable intensification in  
717 Africa. *Trop. Grasslands – Forrajes Trop.* 1, 202–206.

718 Faye, A., Landais, E., 1986. L’embouche bovine paysanne dans le centre-nord du bassin  
719 arachidier au Sénégal. *Cah. la Rech. en milieu Rural* 9–10, 113–120.

720 Food and Agriculture Organization of the United Nations, 2015. Croissance agricole en Afrique  
721 de l’Ouest, Facteurs déterminants de marché et de politique. Rome, Italie.

722 Food and Agriculture Organization of the United Nations, 2003. Gestion de la fertilité des sols

723 pour la sécurité alimentaire en Afrique subsaharienne. Rome, , Italie.

724 Freschet, G.T., Masse, D., Hien, E., Sall, S., Chotte, J.L., 2008. Long-term changes in organic  
725 matter and microbial properties resulting from manuring practices in an arid cultivated soil  
726 in Burkina Faso. *Agric. Ecosyst. Environ.* 123, 175–184.

727 Grillot, M., Guerrin, F., Gaudou, B., Masse, D., Vayssières, J., 2018a. Multi-level analysis of  
728 nutrient cycling within agro-sylvo-pastoral landscapes in West Africa using an agent-  
729 based model. *Environ. Model. Softw.* 107, 267–280.  
730 <https://doi.org/10.1016/j.envsoft.2018.05.003>

731 Grillot, M., Vayssières, J., Guerrin, F., Lecomte, P., 2018b. Modélisation conceptuelle de la  
732 gestion adaptative de la biomasse face à l'aléa climatique en systèmes agro-sylvopastoraux.  
733 *Cah. Agric.* 27, 55004. <https://doi.org/10.1051/cagri/2018034>

734 Jouve, P., 2001. Jachères et systèmes agraires en Afrique subsaharienne », in: Floret, C.,  
735 Pontanier, R. (Eds.), *La Jachère En Afrique Tropicale. Rôles, Aménagement, Alternatives.*  
736 *De La Jachère Naturelle à La Jachère Améliorée, Le Point Des Connaissances.* Paris, pp.  
737 1–20.

738 Krogh, L., 1997. Field and village nutrient balances in millet cultivation in northern Burkina  
739 Faso: a village case study. *J. Arid Environ.* 35, 147–159. [https://doi.org/0140-  
740 1963/97/010147](https://doi.org/0140-1963/97/010147)

741 Lahmar, R., Bationo, B.A., Lamso, N.D., Guero, Y., Tittonell, P., 2012. Tailoring conservation  
742 agriculture technologies to West Africa semi-arid zones: Building on traditional local  
743 practices for soil restoration. *F. Crop. Res.* 132, 158–167.

744 Lericollais, A., 1999. *Paysans sereer. Dynamiques agraires et mobilités au Sénégal.*, IRD Éditio.  
745 ed. Paris,.

746 Maffray, H., 2014. Etude des relations de genre intégrée dans l'évaluation des performances  
747 des unités d'exploitation : cas de la société Sereer dans l'ancien bassin arachidier au  
748 Sénégal. ISTOM.

749 Manlay, R.J., 2001. Organic matter dynamics in mixed-farming systems of the West African  
750 savanna. A village case study from South Senegal. T. hèse doctorale, École nationale du  
751 génie rural, des eaux et forêts, Montpellier.

752 Manlay, R.J., Ickowicz, A., Masse, D., Feller, C., Richard, D., Floret, C., Richard, D., Feller,  
753 C., Ickowicz, A., Masse, D., Feller, C., Richard, D., 2004. Spatial carbon, nitrogen and  
754 phosphorus budget in a village of the West African savanna—II. Element flows and  
755 functioning of a mixed-farming system. *Agricultural Systems*, : . *Agric. Syst.* 79, 83–107.  
756 [https://doi.org/10.1016/S0308-521X\(03\)00054-4](https://doi.org/10.1016/S0308-521X(03)00054-4)

- 757 Minang, P.A., Duguma, L.A., Van Noordwijk, M., Prabhu, R., Freeman, O.E., 2015. Enhancing  
758 multifunctionality through system improvement and landscape democracy processes: a  
759 synthesis., in: Minang, P.A., van Noordwijk, M., Freeman, O.E., Mbow, C., de Leeuw, J.,  
760 Catacutan, D. (Eds.), *Climate-Smart Landscapes: Multifunctionality in Practice*. Nairobi,  
761 Kenya, pp. 389–404.
- 762 Ndiaye, M.L., Soti, V., Vayssières, J., Masse, D., 2016. Analyse par télédétection de la  
763 dynamique d’occupation du sol dans trois terroirs villageois du vieux bassin arachidier au  
764 Sénégal sur la période 1968-2016. Rapport CIRAD, IRD, CSE, Dakar, Sénégal.
- 765 Odru, M., 2013. Flux de biomasse et renouvellement de la fertilité des sols à l’échelle du terroir.  
766 Étude de cas d’un terroir villageois sereer au Sénégal. Thèse de master, Istom, Cergy-  
767 Pontoise.
- 768 Rabot, C., 1990. Transfert de fertilité et gestion des terroirs, Quelques points de vue. *Les Cah.*  
769 *la Rech.* 25, 19–32.
- 770 Reiff, C., Gros, C., 2004. Analyse diagnostic du système agraire des pays serères au coeur du  
771 “bassin arachidier” Sénégal. Institut national Agronomie Paris-Grignon.
- 772 Roudier, P., Sultan, B., Quirion, P., Berg, A., 2011. The impact of future climate change on  
773 West African crop yields : What does the recent literature say ? *Glob. Environ. Chang.* 21,  
774 1073–1083. <https://doi.org/10.1016/j.gloenvcha.2011.04.007>
- 775 Roy, R., Misra, R. V, Lesschen, J.P., Smaling, E.M., 2005. Évaluation du bilan en éléments  
776 nutritifs du sol. *Approches et méthodologies.*, FAO. ed, Bulletin FAO engrais et nutrition  
777 végétale. Rome, Italie.
- 778 Rufino, M.C., Dury, J., Tittonell, P., Wijk, M.T. V, Herrero, M., Zingore, S., Mapfumo, P.,  
779 Giller, K.E., 2011. Competing use of organic resources, village-level interactions between  
780 farm types and climate variability in a communal area of NE Zimbabwe. *Agric. Syst.* 104,  
781 175–190.
- 782 Rufino, M.C., Hengsdijk, H., Verhagen, A., 2009. Analysing integration and diversity in agro-  
783 ecosystems by using indicators of network analysis. *Nutr. Cycl. Agroecosystems* 84, 229–  
784 247.
- 785 Schlecht, E., Buerkert, A., Tielkes, E., Bationo, A., 2006. A critical analysis of challenges and  
786 opportunities for soil fertility restoration in Sudano-Sahelian West Africa. *Nutr. Cycl.*  
787 *Agroecosystems* 76, 109–136.
- 788 Schlecht, E., Hiernaux, P., 2004. Beyond adding up inputs and outputs: process assessment and  
789 upscaling in modelling nutrient flows. *Nutr. Cycl. Agroecosystems* 70, 303–319.
- 790 Schlecht, E., Hiernaux, P., Achard, F.O., Turner, M.D., 2004. Livestock related nutrient budgets

791 within village territories in western Niger. *Nutr. Cycl. Agroecosystems* 68, 199–211.

792 Serpantie, G., Ouattara, B., 2001. Fertilité et jachères en Afrique de l’Ouest », in: Floret, C.,  
793 Pontanier, R. (Eds.), *La Jachère En Afrique Tropicale. Rôles, Aménagement, Alternatives.*  
794 *De La Jachère Naturelle à La Jachère Améliorée, Le Point Des Connaissances.* Paris, pp.  
795 21–83.

796 Smaling, E.M.A., Nandwa, S.M., Janssen, B.H., 1997. Soil fertility in Africa is at stake, in:  
797 Buresh, R.J., Sanchez, P.A., Calhoun, F. (Eds.), *Replenishing Soil Fertility in Africa.*  
798 *Wisconsin,* pp. 47–61.

799 Stoorvogel, J.J., Smaling, E.M.A., 1990. *Assessment of Soil Nutrient Depletion in Sub-Saharan*  
800 *Africa: 1983-2000. Main Report.* Wageningen.

801 The World Bank, 2010a. Datas, Poverty headcount ratio at \$2.15 a day (2017 PPP) (% of  
802 population) - Sub-Saharan Africa [WWW Document]. URL  
803 <https://data.worldbank.org/indicator/SP.RUR.TOTL.ZS?locations=ZG>

804 The World Bank, 2010b. Datas, Rural population (% of total population) - Sub-Saharan Africa  
805 [WWW Document]. URL  
806 <https://data.worldbank.org/indicator/SP.RUR.TOTL.ZS?locations=ZG>

807 The world Bank, 2010. Datas, Rural population (% of total population) - Sub-Saharan Africa  
808 [WWW Document]. URL  
809 <https://data.worldbank.org/indicator/SP.RUR.TOTL.ZS?locations=ZG>

810 Thornton, P.K., Herrero, M., 2001. Integrated crop-livestock simulation models for scenario  
811 analysis and impact assessment. *Agric. Syst.* 70, 581–602.

812 Tschakert, P., 2004. Carbon for farmers: assessing the potential for soil carbon sequestration in  
813 the old peanut basin of Senegal. *Clim. Change* 67, 273–290.

814 Vandermeersch, C., Marra, A., Ndiaye, P., Ndiaye, O., Faye, S., LEVI, P., Naulin, A.,  
815 Ekoudvidjin, E., 2013. Rapport sur les enquêtes « Culture élevage », « Ménage  
816 équipement » et le « Suivi scolaire » : document technique et axes de recherche. Dakar,  
817 Sénégal,.

818 Vayssières, J., 2012. *Modélisation participative et intégration des pratiques décisionnelles*  
819 *d’éleveurs dans un modèle global d’exploitation. Thèse doctorale, Centre international*  
820 *d’études supérieures en sciences agronomiques, Montpellier.*

821 Vayssières, J., Blanchard, M., Vigne, M., Masse, D., Albrecht, A., Vall, E., Pocard-Chapuis  
822 R., Corniaux, C., Lecomte, P., 2015. The risk of declines in soil fertility and crop  
823 productivity due to decreased livestock presence in agropastoral zones of West Africa., in:  
824 5th Farming System Design Conference. Montpellier, France, 7-10 September, p. 2.

- 825 Vayssières, J., Guerrin, F., Paillat, J.M., Lecomte, P., 2009. GAMEDE: a Global Activity  
826 Model for Evaluating the sustainability of Dairy Enterprises. Part I – Whole-farm dynamic  
827 model. *Agric. Syst.* 101, 128–138.
- 828 Vayssières, J., Vigne, M., Alary, V., Lecomte, P., 2011. Integrated participatory modelling of  
829 actual farms to support policy making on sustainable intensification. *Agric. Syst.* 104,  
830 146–161.
- 831 Vigne, M., Vayssières, J., Lecomte, P., Peyraud, J.L., 2013. Pluri-energy analysis of livestock  
832 systems - A comparison of dairy systems indifferent territories. *J. Environ. Manage.* 126,  
833 44–54. <https://doi.org/10.1016/j.jenvman.2013.04.003>
- 834 Wade, C., Vayssières, J., Thiam, M.B., Faye, A., Diaw, M.T., Dieng, A., Lecomte, P., 2017.  
835 Impact of livestock intensification and improved manure management on nitrogen use  
836 efficiency in mixed crop-livestock systems in central Senegal., in: *P2CG: Pastoralism in  
837 Current of Global Changes*. Dakar, Senegal, 20-24 November, p. 2.
- 838 Waneukem, V., Ganry, F., 1992. Relations entre les formes d'azote organique du sol et l'azote  
839 absorbé par la plante dans un sol ferrallitique du Sénégal. *Cah. Orstom, série Pédologie*  
840 27, 97–107.
- 841 Wassenaar, T., 2015. Reconsidering Industrial Metabolism: From Analogy to Denoting  
842 Actuality. *J. Ind. Ecol.* 19, 715–727. <https://doi.org/10.1111/jiec.12349>  
843  
844

845 **Appendices**

## 846 Appendix 1: Conversion factors from local to standard units

Category	Indicator	Unit	Value	Origin or reference
<i>Seeds</i>				
	bag of cabbage seeds	kgFM	0.3	survey
	bag of chili seeds	kgFM	0.3	survey
	bag of eggplant seeds	kgFM	0.3	survey
	bag of tomato seeds	kgFM	0.3	survey
	basin of bissap seeds ( <i>Hibiscus sabdariffa</i> )	kgFM	6.0	estimated
	basin of groundnut seeds	kgFM	30.0	survey
	cup of onion seeds	kg FM	0.1	survey
	handful of bissap	kgFM	0.1	calculated
	handful of cowpea	kgFM	0.2	calculated
	handful of groundnut	kgFM	0.2	calculated
	handful of okra	kgFM	0.1	survey
	heap of cassava seeds	kgFM	0.5	survey
	pot of onion seeds	kgFM	0.1	survey
	seed drill of groundnut	kgFM	5.0	survey
	seed drill of sorghum	kgFM	2.0	survey
	1L of bissap seeds	kgFM	0.9	weighed
	1.5L bottle of cowpea seeds	kgFM	1.5	weighed
	10L container of sorghum grains	kgFM	10.0	survey
	20L container of cowpea seeds	kgFM	20.0	weighed
	1kg tomato pot of bissap seeds	kgFM	0.9	weighed
	1kg pineapple pot of bissap seeds	kgFM	0.4	weighed
	50kg bag of groundnut seeds	kgFM	55.0	survey
<i>Organic matter</i>				
	basin of solid manure	kgFM	5.6	survey
	basin of leftover feed	kgFM	17.0	estimated
	basin of waste	kgFM	7.0	weighed
	bucket of waste	kgFM	3.5	weighed
	horse cart of solid manure	kgFM	280.0	survey
	donkey cart of solid manure	kgFM	186.7	survey
	cart of leftover feed	kgFM	180.0	estimated
	cart of solid manure free of leftover feed	kgFM	315.0	calculated

wheelbarrow of solid manure	kgFM	22.8	calculated
wheelbarrow of solid manure with straw	kgFM	20.3	calculated
50kg bag of fresh solid manure	kgFM	30.0	weighed
50kg bag of poultry manure	kgFM	40.0	survey

#### ***Mineral fertilizers***

bag of millet fertilizer	kgFM	50.0	literature
bag of 10-20-20 fertilizer	kgFM	50.0	literature
handful of "millet fertilizer"	kgFM	0.2	estimated
pot of fertilizer	kgFM	1.0	estimated

#### ***By-products***

basin of fresh cowpea hay	kgFM	20.0	literature
basin of groundnut hay	kgFM	4.3	calculated
horse cart of cowpea hay	kgFM	238.0	survey
horse cart of millet straw	kgFM	210	literature
horse cart of sorghum straw	kgFM	210	survey
donkey cart of cowpea hay	kgFM	158.667	survey
donkey cart of millet straw	kgFM	140	survey
donkey cart of sorghum straw	kgFM	140	survey
cart of corn straw	kgFM	224.0	calculated
cart of cowpea hay	kgFM	238.0	calculated
cart of groundnut hay	kgFM	238.0	calculated
cart of millet straw	kgFM	210.0	calculated
cart of sorghum straw	kgFM	210.0	calculated
cart of watermelon straw	kgFM	200.0	estimated
bundle of corn	kgFM	20.0	estimated
bundle of millet	kgFM	11.0	weighed
bundle of millet stalks	kgFM	7.5	weighed
bundle of sorghum	kgFM	11.0	weighed
heap of groundnut hay	kgFM	8.0	survey
50kg bag of fresh cowpea hay	kgFM	25.0	estimated
100kg bag of cowpea hay	kgFM	17.0	weighed on Mbfaye market
100kg bag of groundnut hay	kgFM	17.0	weighed on Mbfaye market

#### ***Main crops***



barigot <sup>1</sup> of corn	kgFM	85.0	weighed on Mbafaye market
barigot <sup>1</sup> of cowpea	kgFM	135.0	literature
barigot <sup>1</sup> of groundnut	kgFM	100.0	estimated
barigot <sup>1</sup> of millet	kgFM	100.0	estimated
barigot <sup>1</sup> of sorghum	kgFM	110.0	estimated
basin of bissap	kgFM	4.3	weighed on Mbafaye market
basin of dried cowpea	kgFM	30.0	literature; survey
basin of fresh cowpea	kgFM	5.0	survey
basin of black eggplants	kgFM	20.0	survey
basin of green eggplants	kgFM	25.0	survey
basin of unhusked groundnut	kgFM	15.0	literature
basin of matye millet grain	kgFM	14.4	survey
basin of pod millet grain	kgFM	12.0	survey
basin of onions	kgFM	25.0	survey
basin of sorghum grain	kgFM	10.0	weighed
basin of tomatoes	kgFM	37.5	survey
bowl of okra	kgFM	1.0	survey
bucket of cabbage	kgFM	10.0	survey
bucket of chili	kgFM	5.0	survey
bucket of dried cowpea	kgFM	15.0	survey
bucket of fresh cowpea	kgFM	2.5	survey
bucket of eggplant	kgFM	10.0	survey
horse cart of millet ears	kgFM	276.0	literature; survey
horse cart of sorghum branches	kgFM	150.0	literature
donkey cart of millet ears	kgFM	184.0	survey
donkey cart of sorghum branches	kgFM	100.0	calculated
cart of matye millet	kgFM	331.2	survey
cart of sorghum ear	kgFM	150.0	literature
pineapple pot of bissap	kgFM	0.425	weighed
pot of tomatoes	kgFM	1.5	survey
sheaf of matye millet	kgFM	14.4	survey
sheaf of pod millet	kgFM	12.0	literature; survey
10L bottle of dried cowpeas	kgFM	10.0	survey

---

<sup>1</sup> barrel

50kg bag of bissap	kgFM	6.4 weighed
50kg bag of cabbage	kgFM	40.0 survey
50kg bag of chili	kgFM	17.0 survey
50kg bag of corn grain	kgFM	42.5 weighed on Mbafaye market
50kg bag of black eggplant	kgFM	21.5 survey
50kg bag of millet grains	kgFM	50.0 survey
50kg bag of onions	kgFM	30.0 survey
50kg bag of sorghum branches	kgFM	12.5 literature
50kg bag of crushed sorghum	kgFM	55.0 survey
50kg bag of sorghum grain	kgFM	55.0 weighed on Mbafaye market
100kg bag of unhusked cowpea	kgFM	67.5 literature
100kg bag of husked groundnut	kgFM	80.0 survey
100kg bag of unhusked groundnut	kgFM	60.0 literature
100kg bag of uncrushed sorghum	kgFM	80.0 survey

### ***Concentrates***

basin of millet ears	kgFM	4.0 weighed
basin of rice bran	kgFM	8.5 calculated
disc of groundnut cake	kgFM	2.2 weighed
handful of chick feed	kgFM	0.2 estimated
handful of concentrates	kgFM	0.2 estimated
handful of groundnut cake	kgFM	0.2 estimated
handful of millet bran	kgFM	0.2 survey
handful of millet	kgFM	0.2 estimated
handful of rice bran	kgFM	0.2 estimated
pot of concentrate	kgFM	1.6 weighed on Mbafaye market
pot of cotton grain	kgFM	1.0 calculated
pot of cowpeas	kgFM	1.4 calculated
pot of groundnut cake	kgFM	0.7 weighed on Mbafaye market
pot of millet bran	kgFM	1.0 weighed on Mbafaye market
pot of millet grain	kgFM	1.0 estimated

pot of rice bran	kgFM	0.9	weighed on Mbafaye market
pot of sorghum grain	kgFM	1.1	estimated
2.5kg tomato pot of millet bran	kgFM	1.0	weighed
100kg bag of rice bran	kgFM	85.0	calculated
100kg bag of millet bran	kgFM	100.0	weighed on Mbafaye market
100kg bag of cotton grain	kgFM	100.0	survey
100kg bag of <i>Faidherbia albida</i> fruits	kgFM	20.0	estimated

### ***Fodder***

bag of millet bran	kgFM	50.0	literature
bag of rice bran	kgFM	50.0	literature
basin of cowpea hay	kgFM	4.3	calculated
basin of corn straw	kgFM	5.3	calculated
basin of millet straw	kgFM	5.0	survey
basin of sorghum straw	kgFM	5.0	estimated
basin of weeds	kgFM	4.8	calculated
leaves of a branch of <i>Faidherbia albida</i>	kgFM	10.0	survey
bundle of corn straw	kgFM	10.0	literature
bundle of cowpea hay	kgFM	6.7	calculated
bundle of groundnut hay	kgFM	8.5	calculated
bundle of millet	kgFM	10.0	weighed
bundle of sorghum	kgFM	11.0	weighed
handful of groundnut hay	kgFM	0.2	calculated
wheelbarrow of dried weeds	kgFM	5.0	survey
50kg bag of weeds	kgFM	16.0	survey
100kg bag of weeds	kgFM	32.0	weighed
100kg bag of cowpea hay	kgFM	14.0	weighed
100kg bag of groundnut hay	kgFM	17.0	weighed

### ***Household food supplies***

dried fish	kg FCFA <sup>-1</sup>	0.0026	Weighed on Mbafaye market
heap of meat	kgFM	0.5	survey
handful of rice	kgFM	0.1	weighed
pot of corn	kgFM	0.9	weighed on Mbafaye market

	Plate of groundnut cake	kgFM	2.2 weighed on Mbafaye market
<b><i>Household waste</i></b>			
	basin of waste	kgFM	7.0 weighed
<b><i>Wood</i></b>			
	cart of wood	kgFM	420.4 literature
	bundle of wood	kgFM	14.8 weighed Barry Sine
<b><i>Building</i></b>			
	sheaf of branches for fencing (free of leaves)	kgFM	7.5 weighed

---

847

## 848 Appendix 2: Consumption of crop residues, table of coefficients

<b>Indicator</b>	<b>Unit</b>	<b>Value</b>	<b>Origin or reference</b>
Common grazing withdrawal	kgDM TLU <sup>-1</sup> day <sup>-1</sup>	4.75	Diop et al.. 2005
Withdrawal portion of millet straw	%DM	0.33	Dongmo et al.. 2009
Withdrawal portion of sorghum straw	%DM	0.33	Dongmo et al. 2009
Withdrawal portion of corn stalks	%DM	0.67	Dongmo et al. 2009
Withdrawal portion of groundnut hay	%DM	0	field observation
Withdrawal portion of cowpea hay	%DM	0	field observation
Withdrawal portion of watermelon straw	%DM	0	field observation

849

850 Appendix 3: Deposition rates during grazing by the herd

<b>Indicator</b>	<b>Unit</b>	<b>Value</b>	<b>Reference</b>
<b><i>Feces deposited</i></b>			
Wet season	kgDM day <sup>-1</sup> TLU <sup>-1</sup>	3.4	Wade et al., 2016
Cool dry season	kgDM day <sup>-1</sup> TLU <sup>-1</sup>	2.1	Wade et al., 2016
Hot dry season	kgDM day <sup>-1</sup> TLU <sup>-1</sup>	3.0	Wade et al., 2016
<b><i>Urine</i></b>	kgFM day <sup>-1</sup> TLU <sup>-1</sup>	3	Dongmo et al., 2009

851

852 Appendix 4: Feces nitrogen content kgN kgDM<sup>-1</sup> according to the season (Source: Manlay. 2001)

<b>Month</b>	<b>Nitrogen content kgN kgDM<sup>-1</sup></b>
Wet season	0.0182
Cool dry season	0.0168
Hot dry season	0.0148

853

<b>Indicator</b>	<b>Dry matter conversion factor kgDM kgFM<sup>-1</sup></b>	<b>Origin or reference</b>	<b>Nitrogen conversion factor kgN kgDM<sup>-1</sup></b>	<b>Origin or reference</b>
Corn grain	0.912	Le Thiec. 1996	0.01664	Le Thiec 1996
Millet grain	0.91	Wade 2016	0.01920	Le Thiec 1996
Sorghum grain	0.910	Le Thiec 1996	0.0184	Wade 2016
Groundnut grain	0.860	Le Thiec 1996	0.06224	Le Thiec 1996
Watermelon grain	0.089	estimated	0.00096	estimated
Cowpea grain	0.892	Maliboungou et al.. 1998	0.04466	Maliboungou et al. 1998
Bissap grain	1.000	USDA Nutirent Laboratory. 2013	0.00100	USDA Nutrient Laboratory 2013
Groundnut hay	0.896	Le Thiec 1996	0.01700	(Manlay. 2001)
Millet straw	0.88	Wade 2016	0.0055	Wade 2016
Sorghum straw	0.896	Le Thiec 1996	0.00544	Le Thiec 1996
Cowpea hay	0.902	Le Thiec 1996	0.02395	Le Thiec 1996
Watermelon stalk	0.089	estimated	0.00096	estimated
Corn stalk	0.895	Le Thiec 1996	0.00800	Manlay 2001
Corn cob	0.650	Alvarez et al.. 2013	0.01210	Manlay 2001
Millet bale	0.989	Manlay 2001	0.01230	Manlay 2001
Sorghum bale	0.998	Manlay 2001	0.01600	Manlay 2001
Groundnut pod	0.865	Le Thiec 1996	0.02870	Manlay 2001



Watermelon	0.089	ANSES 2012	0.00096	ANSES 2012
Bissap flower	0.405	Courtial et al., 1998	0.02410	Courtial et al. 1998
Rice	0.870	Alvarez et al. 2013	0.01500	Alvarez et al. 2013
Meat	0.800	Huss. 1999	0.25000	Huss 1999
Fish	0.265	Huss 1999	0.11169	Huss 1999
Compact manure	0.320	Alvarez et al. 2013	0.01600	Alvarez et al. 2013
Manure containing straw	0.450	Ganry and Badiane. 1998	0.00500	Ganry and Badiane 1998
Sewage powder	0.450	Ganry and Badiane 1998	0.00440	Ganry and Badiane 1998
Animal feed residues	0.881	Le Thiec 1996	0.00270	Le Thiec 1996
Household waste	0.500	Alvarez et al. 2013	0.00600	Alvarez et al. 2013
Wood	0.880	Loupe. 2012	0.00300	Loupe 2012
Fresh pasture	0.45	Wade 2016	0.0174	Wade 2016
<i>Faidherbia albida</i> leaves	0.307	Wentling. 1983	0.01552	Fall. 1989
Dry pasture	0.68	Wade 2016	0.0090	Wade 2016
Fresh cowpea hay	0.203	Le Thiec 1996	0.02434	Le Thiec 1996
Baobab leaves	0.896	Abakar. 2010	0.00900	Abakar 2010
Cotton grain	0.930	Le Thiec 1996	0.03072	Le Thiec 1996
Groundnut cake	0.95	Wade 2016	0.0702	Wade 2016
Rice bran	0.95	Wade 2016	0.0092	Wade 2016
Millet bran	0.95	Wade	0.0297	Wade 2016

Feed concentrate	0.89	-Wade 2016	0.0232	Wade 2016
<i>Acacia albida</i> fruits	0.900	Fall-Touré et al. 1997	0.11220	Richard et al.. 1990
Milk	-	-	0.005 (/kgFM)	Rufino et al. 2009
Urea	1	field observation	0.46	field observation
« Millet mineral fertilizer »	1	field observation	0.15	field observation
« Groundnut mineral fertilizer»	1	field observation	0.10	field observation
Urine	0.075	Audoin. 1991	0.000675	Audoin 1991

---

855

Category	Indicator	Unit	Purchase price	Sale price	Origin
<b>Biomass</b>					
<i>Mineral fertilizers</i>					
	Urea	€ kgFM <sup>-1</sup>	0.24	-	calculated
	Millet mineral fertilizer	€ kgFM <sup>-1</sup>	0.22	-	calculated
	Groundnut mineral fertilizer	€ kgFM <sup>-1</sup>	0.21	-	calculated
<i>Organic fertilizers</i>					
	Poultry manure	€ kgFM <sup>-1</sup>	0.12	-	estimated
<i>Pesticides</i>					
	Seed insecticide	€ pill <sup>-1</sup>	0.17	-	calculated
<i>Main plant production</i>					
	Corn	€ kgFM <sup>-1</sup>	0.33	0.39	calculated/estimated
	Millet	€ kgFM <sup>-1</sup>	0.33	0.30	estimated/calculated
	Millet bundle	€ kgFM <sup>-1</sup>	0.18	0.18	estimated
	Sorghum	€ kgFM <sup>-1</sup>	0.49	0.34	calculated
	Sorghum bundle	€ kgFM <sup>-1</sup>		0.29	calculated
	Groundnut	€ kgFM <sup>-1</sup>	1.18	0.41	calculated
	Shell-on groundnut	€ kgFM <sup>-1</sup>		0.45	calculated
	Watermelon seed	€ kgFM <sup>-1</sup>	18.24		calculated
	Watermelon	€ kgFM <sup>-1</sup>		1.29	calculated
	Cowpea	€ kgFM <sup>-1</sup>	0.80	0.48	calculated
	Bissap seeds ( <i>Hibiscus sabdariffa</i> )	€ kgFM <sup>-1</sup>	0.33	-	estimated
	Bissap ( <i>Hibiscus sabdariffa</i> )	€ kgFM <sup>-1</sup>	-	1.65	calculated
	Onion seeds	€ kgFM <sup>-1</sup>	18.24		estimated
	Onion	€ kgFM <sup>-1</sup>	-	0.61	estimated
	Chili pepper seed	€ kgFM <sup>-1</sup>	18.24	-	estimated
	Chili pepper	€ kgFM <sup>-1</sup>	-	1.29	estimated
	Tomato seed	€ kgFM <sup>-1</sup>	18.24	-	estimated
	Tomato	€ kgFM <sup>-1</sup>	-	0.51	estimated
	Cassava seed	€ kgFM <sup>-1</sup>	18.24	-	estimated
	Green eggplant seed	€ kgFM <sup>-1</sup>	18.24	-	estimated

Green eggplant	€ kgFM <sup>-1</sup>	-	1.29	estimated
Black eggplant seed	€ kgFM <sup>-1</sup>	18.24	-	estimated
Black eggplant	€ kgFM <sup>-1</sup>	-	1.29	estimated
Head cabbage seed	€ kgFM <sup>-1</sup>	18.24	-	estimated
Head cabbage	€ kg FM <sup>-1</sup>	-	0.46	estimated
Okra	€ kgFM <sup>-1</sup>	18.24	-	estimated
<b><i>Fodder</i></b>				
Groundnut hay	€ kgFM <sup>-1</sup>	0.37	0.16	calculated
Millet straw	€ kgFM <sup>-1</sup>	0.03	0.03	calculated
Sorghum straw	€ kgFM <sup>-1</sup>	-	0.03	estimated
Cowpea hay	€ kgFM <sup>-1</sup>	0.81	0.81	calculated/estimated
<b><i>Concentrates</i></b>				
"Livestock feed"	€ kgFM <sup>-1</sup>	0.21	-	calculated
Rice bran	€ kgFM <sup>-1</sup>	0.16	-	calculated
Millet bran	€ kgFM <sup>-1</sup>	0.14	-	calculated
Groundnut cake	€ kgFM <sup>-1</sup>	0.30	-	estimated
Cotton grain	€ kgFM <sup>-1</sup>	0.17	-	estimated
Wheat bran	€ kgFM <sup>-1</sup>	0.15	-	estimated
Groundnut cuticle	€ kgFM <sup>-1</sup>	0.08	-	estimated
<b><i>Human food</i></b>				
Rice	€ kgFM <sup>-1</sup>	0.45	-	calculated
Cowpea	€ kgFM <sup>-1</sup>	0.76	-	calculated
Groundnut	€ kgFM <sup>-1</sup>	1.10	-	calculated
Meat	€ kgFM <sup>-1</sup>	2.88	-	calculated
Fish	€ kgFM <sup>-1</sup>	0.58	-	calculated
Oil	€ L <sup>-1</sup>	1.49	-	calculated
Sugar	€ kgFM <sup>-1</sup>	0.90	-	calculated
Groundnut cake	€ plate <sup>-1</sup>	1.75	-	calculated
Bread	€ unit <sup>-1</sup>	0.17	-	calculated
<b><i>Fuel</i></b>				
Wood	€ kgFM <sup>-1</sup>	0.02	0.02	calculated/estimated
Coal	€ kgFM <sup>-1</sup>	0.25	-	calculated
Gas	€ unit <sup>-1</sup>	5.89	-	calculated
<b><i>Animal</i></b>				
Male calf <6 months	€ unit <sup>-1</sup>	237.50	126.67	calculated
Male calf 6-12 months	€ unit <sup>-1</sup>	116.53	197.60	calculated/estimated

Male bull 1-2 years	€ unit <sup>-1</sup>	161.29	268.53	calculated
Male bull 2-3 years	€ unit <sup>-1</sup>	214.49	360.24	calculated
Male bull >3 years	€ unit <sup>-1</sup>	300.60	505.96	calculated
Female calf <6 months	€ unit <sup>-1</sup>	38.84	84.44	estimated
Female calf 6-12 months	€ unit <sup>-1</sup>	77.69	131.73	estimated
Female heifer 1-2 years	€ unit <sup>-1</sup>	107.53	361.00	estimated/calculated
Female heifer 2-3 years	€ unit <sup>-1</sup>	129.20	400.27	calculated/estimated
Female heifer >3 years	€ unit <sup>-1</sup>	291.35	439.53	calculated
Lamb	€ unit <sup>-1</sup>	29.69	73.23	calculated
Mature sheep	€ unit <sup>-1</sup>	62.06	118.36	calculated
Kid	€ unit <sup>-1</sup>	22.71	18.75	calculated
Mature goat	€ unit <sup>-1</sup>	26.25	30.80	calculated
Chick	€ unit <sup>-1</sup>	0.02	0.02	estimated
Chicken	€ unit <sup>-1</sup>	2.48	2.84	calculated
Foal	€ unit <sup>-1</sup>	286.90	286.90	calculated/estimated
Mature horse	€ unit <sup>-1</sup>	239.89	273.60	calculated
Young donkey	€ unit <sup>-1</sup>	60.80	60.80	calculated/estimated
Mature donkey	€ unit <sup>-1</sup>	49.40	22.80	calculated
Duckling	€ unit <sup>-1</sup>	0.04	0.04	estimated
Mature duck	€ unit <sup>-1</sup>	3.72	5.58	estimated
Turkey chick	€ unit <sup>-1</sup>	0.12	0.12	estimated
Turkey	€ unit <sup>-1</sup>	7.60	11.40	calculated/estimated
Piglet	€ unit <sup>-1</sup>	9.12	13.68	estimated
Mature pig	€ unit <sup>-1</sup>	30.40	45.60	estimated

---

857

<b>Farm equipment</b>	<b>Unit</b>	<b>Cost</b>	<b>Origin</b>
<i>Depreciation</i>			
Horse	€ year <sup>-1</sup>	15.20	Reiff and Gros. 2004
Donkey	€ year <sup>-1</sup>	1.52	Reiff and Gros. 2004
Cart	€ year <sup>-1</sup>	6.08	Reiff and Gros. 2004
Seeder	€ year <sup>-1</sup>	2.28	Reiff and Gros. 2004
"Western hoe"	€ year <sup>-1</sup>	1.26	Reiff and Gros. 2004
"Sine hoe"	€ year <sup>-1</sup>	0.76	Reiff and Gros. 2004
<i>Maintenance</i>			
Cart	€ year <sup>-1</sup>	11.40	Reiff and Gros. 2004
Seeder	€ year <sup>-1</sup>	3.04	Reiff and Gros. 2004
"Western hoe"	€ year <sup>-1</sup>	2.28	Reiff and Gros. 2004
"Sine hoe"	€ year <sup>-1</sup>	2.28	Reiff and Gros. 2004
"Iler"	€ year <sup>-1</sup>	0.46	Reiff and Gros. 2004

860 Appendix 8. Environmental, technical and economic gains obtained by digging manure pits per  
 861 household and per year (Audouin, 2014).

Household type	Number of 9 m <sup>3</sup> manure pits required	Manure kgDM ha <sup>-1</sup>	Millet grains kgDM ha <sup>-1</sup>	Economic gain (AI)* €	N balance/plot kgN ha <sup>-1</sup>
1- LRE- SH	2	+155	+21	+30	+3.1
2- MRE-SH	2	+58	+9	+17	+1.9
3- MRE-MH	5	+231	+34	+45	+5.8
4- HRE-MH	2	+20	+6	+8	+2.4
5- HRE-LH	8	+357	+142	+327	+4.3
Diohine average	2	+24	+3	+1	+1.8
Barry Sine average	4	+161	+30	+64	+3.3

862 \* hypothesis: all surplus grain is sold.

863

864 **Tables**

865 Table 1. Main features of the five types of household in Diohine and Barry

Number given to type		1	2	3	4	5
Code name of type		LRE-SH	MRE-SH	MRE-MH	HRE-MH	HRE-LH
Livestock stocking rate	TLU ha-1	1.3	1.3	3.1	3.6	3.7
Importance of livestock fattening	% of total TLU	23	15	32	03	59
Population density	capita ha-1	4.5	2.8	4.2	3.1	6.3
Total cultivated area	ha	3.8	5.5	5.2	5.3	4.9
Importance of groundnut	% of TCA	26	19	32	8	20
Importance of fallow	% of TCA	2	11	2	19	0
Free-grazing plant biomass balance ( $\Delta$ FG)	kgDM ha-1 year-1	-225	-61	-2	3451	-566
Manure inputs during night corralling	kgDM ha-1 year-1	113	25	218	758	323
Free-grazing and night corralling balance	kgN ha-1 year-1	0.15	2.99	8.43	3.69	9.93
Availability of solid manure from livestock housed in barns	TLU.h	24843	19431	49274	12505	95522
Solid manure input rate per livestock tethered close to the homestead	kgN TLU.h-1	0.00030	0.00063	0.00040	0.00055	0.00012
Nitrogen balance at household level	kgN ha-1 year-1	52.6	-0.2	42.4	43.0	151.0
Percentage of household in Diohine	%	11	78	0	11	0
Percentage of household in Barry	%	26	49	19	0	6

866

867



868 Table 2. Main indicators of crop fertilization at plot level, average results for the total cultivated area  
 869 (TCA) in Diohine and Barry for the 2012-2013 cropping season

Indicator	Units	Diohine	Barry
<i>Herd-driven deposition of excreta during free grazing</i>			
Rate of deposition during free grazing	% IN	46	25
Balance of flows driven by free-grazing livestock-in the wet season	kgN ha <sup>-1</sup>	-8.32	-26
Balance of flows driven by free-grazing livestock-in the dry season	kgN ha <sup>-1</sup>	0.55	5.04
<i>Herd-driven deposition during night corralling</i>			
Input rate during night corralling in the wet and dry season	% IN	15	15
Night corralling area in the wet season	% TCA	2.7	0.2
Deposition of excreta during night corralling in the wet season	kgDM ha <sup>-1</sup>	83	20
Night corralling area in the dry season	% TCA	3	39
Deposition of excreta during night corralling in the dry season	kgDM ha <sup>-1</sup>	51	204
<i>Human application of solid manure</i>			
Inputs of solid manure as a percentage of total inputs	% IN	14	12
Area of application of solid manure	% TCA	22	31
Volume of manure applied	kgDM ha <sup>-1</sup>	337	482
<i>Human application of mineral fertilizer</i>			
Inputs of mineral fertilizer as a percentage of total inputs	% IN	8	27
Area of application of mineral fertilizer	% TCA	2	27
Volume of mineral fertilizer applied	kgN ha <sup>-1</sup>	1.09	6.28
<i>Human application of waste</i>			
Waste inputs as a percentage of total inputs	% IN	14	16
Area of application of waste	% TCA		
Volume of waste applied	kgN ha <sup>-1</sup>	1.86	3.75
<i>Human application of seeds</i>			
Seeds input as a percentage of total inputs	% IN	3	6
Area of application of seeds	% TCA	100	100
Volume of seeds applied	kgN ha <sup>-1</sup>	0.47	1.30

870

871 Table 3. Yields of main crop -products and by-products at plot level; Proportion of by-products left on  
 872 the ground for the 2012-2013 cropping season in Diohine and Barry.

Indicator	Units	Diohine	Barry
<i>Yields of main products</i>			
Millet ear	kgDM ha <sup>-1</sup>	626	727
Sorghum ear	kgDM ha <sup>-1</sup>	480	779
Groundnut pod	kgDM ha <sup>-1</sup>	371	366
<i>Byproducts yields</i>			
Millet straw	kgDM ha <sup>-1</sup>	1 823	2 418
Sorghum straw	kgDM ha <sup>-1</sup>	1 067	2 505
Groundnut hay	kgDM ha <sup>-1</sup>	1 171	696
<i>Proportion of by-products left on the grounds</i>			
Millet	%	60	43
Sorghum	%	44	13
Groundnut	%	31	0

873

874

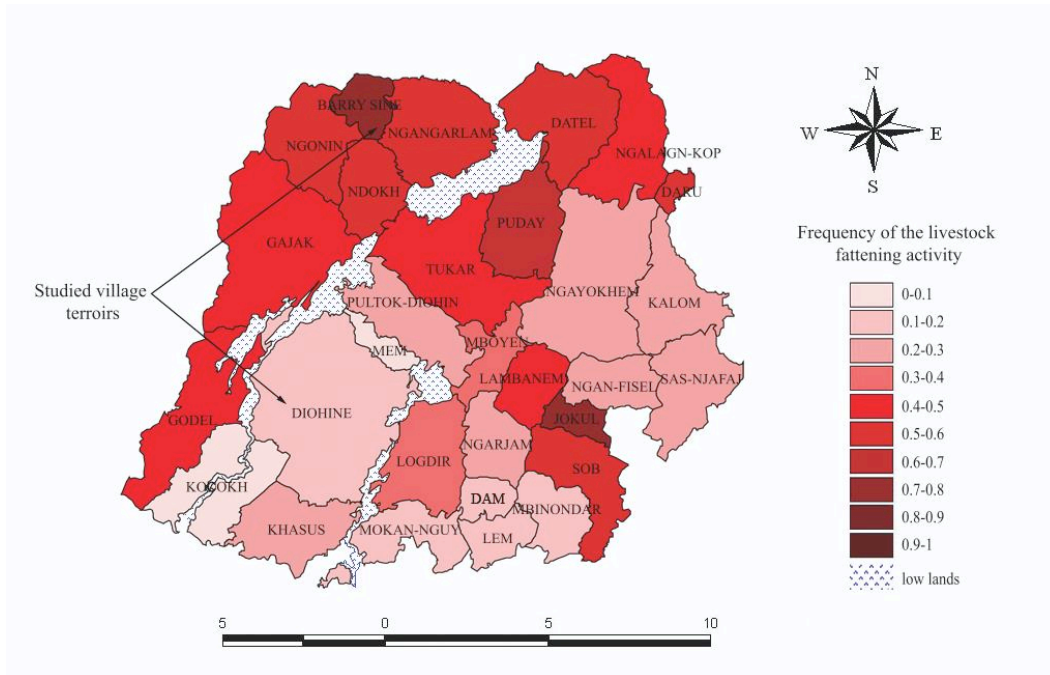
875 Table 4. N flows entering, leaving, and circulating within village *terroirs* and corresponding N-flow-  
 876 based indicators at village *terroir* level for Diohine and Barry for the 2012-2013 cropping season

	Units	Diohine	Barry
<i>Input flows</i>			
Human food	kgN ha <sup>-1</sup>	3.73	4.85
Seeds	kgN ha <sup>-1</sup>	0.21	0.38
Mineral fertilizers	kgN ha <sup>-1</sup>	0.92	5.16
Direct withdrawal biomass <sup>2</sup>	kgN ha <sup>-1</sup>	0.74	0.88
Livestock	kgN ha <sup>-1</sup>	0.60	33.51
Fodder	kgN ha <sup>-1</sup>	0.22	0.37
Feed concentrates	kgN ha <sup>-1</sup>	3.39	23.67
<i>Output flows</i>			
Main crop products	kgN ha <sup>-1</sup>	0.11	0.88
Crop by-products	kgN ha <sup>-1</sup>	0.02	0.12
Livestock	kgN ha <sup>-1</sup>	1.00	42.48
Milk	kgN ha <sup>-1</sup>	0.00	0.37
Manure and urine	kgN ha <sup>-1</sup>	0.31	0.10
<i>Summary of flows</i>			
Total inputs (IN)	kgN ha <sup>-1</sup>	10.06	68.82
Total outputs (ON)	kgN ha <sup>-1</sup>	1.55	43.95
Total system throughflow (TST)	kgN ha <sup>-1</sup>	14.14	18.02
Dependence (D=IN/TST)	dmnl	2.03	12.66
SSFeed	%	86	70
SSFert	%	96	67
N balance (NB)	kg ha <sup>-1</sup>	8.51	24.88
N use efficiency (NUE)	dmnl	0.15	0.64

877

<sup>2</sup> Free grazing of plant biomass outside the boundaries of the village

878 **Figures**



879

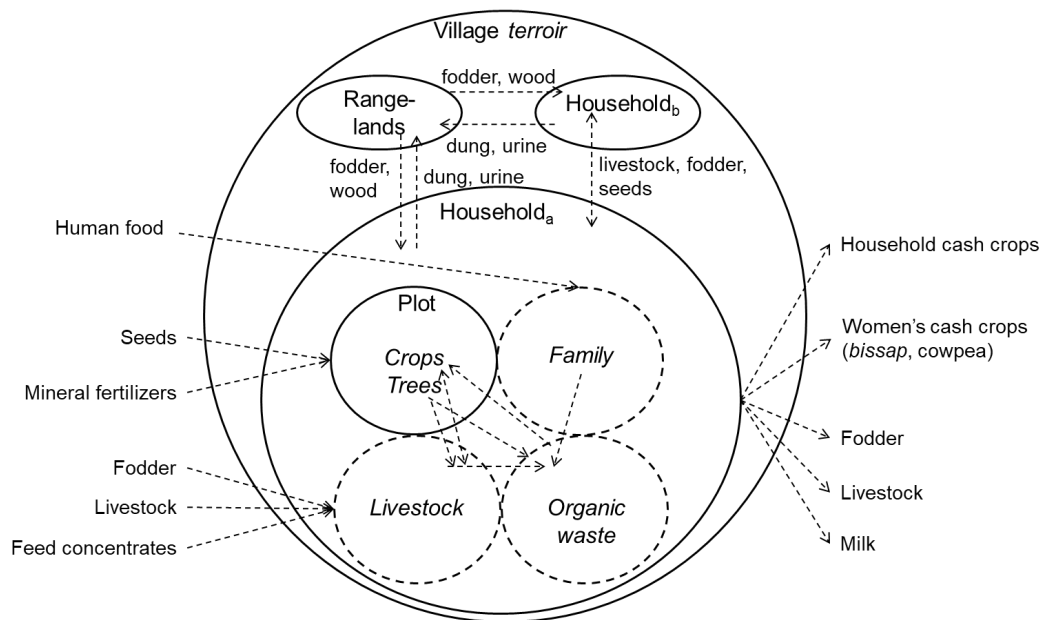
880 Figure 1. Portion of holdings that practice livestock fattening in 2012 in the 30 village *terroirs* of the

881

Niakhar demographic and health observatory (Delaunay et Lalou, 2012).

882 *2 columns, color*

883



884

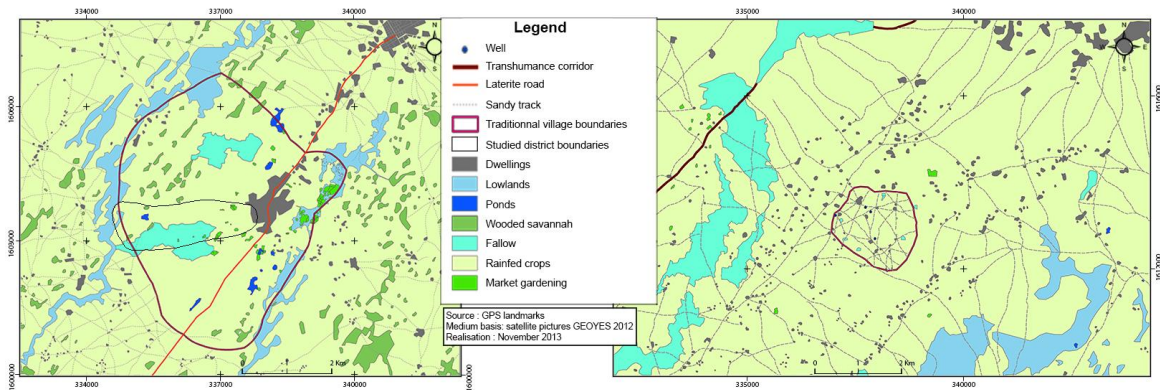
885 Figure 2. Conceptual stock-flow model of the system studied with three interlocking systems: plot,

886

household and village *terroir*

887 *1.5 columns*

888



889

890 Figure 3. Agro-ecological zoning of Diohine (left) and Barry (right) during the 2012-2013 cropping  
891 season.

892 *2 columns, color*

893

894

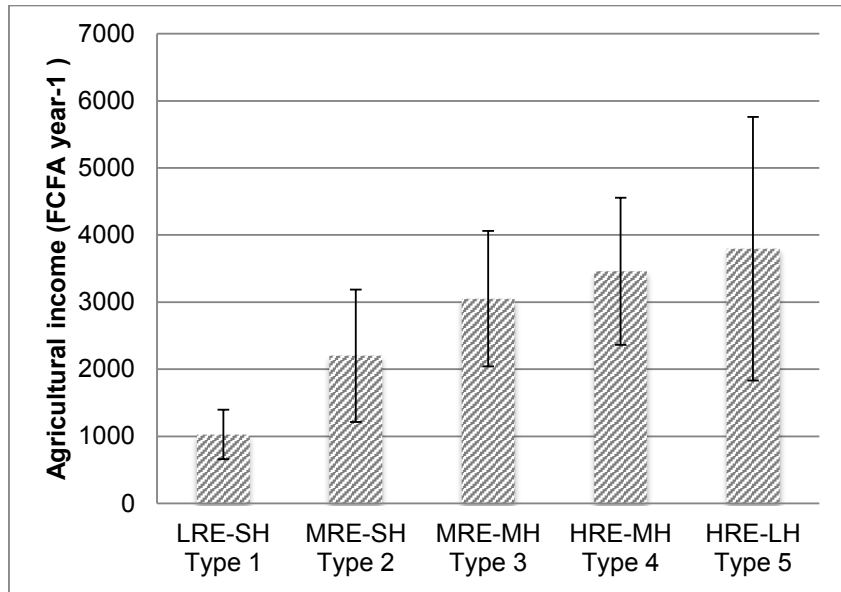
	June	July	August	September	October	November	December	January	February	March	April	May
Climatic season	Wet season				Cool dry season				Hot dry season			
Millet cropping	++	++	++	++	++	++	++	+				+
Groundnut cropping		+	++	++	++	+						
Presence of transhumant herd	+						+	++	++	++		
Grazing periods in fallow (Diohine)		+	++	++	++	++	+					
Bovine fattening (Barry)	++	+				+	++	++	++	++	++	++
Ovine fattening (Barry)		+	+	++	++	++						
Religious Muslim events (in 2012)			Korité X		Tabaski X	Tamkhalet X		Magal X				

895

896 Figure 4. Livestock farming and cropping practices intensity described as a function of the seasons in  
897 the Niakhar region in the former groundnut basin of Senegal

898 *2 columns*

899



900

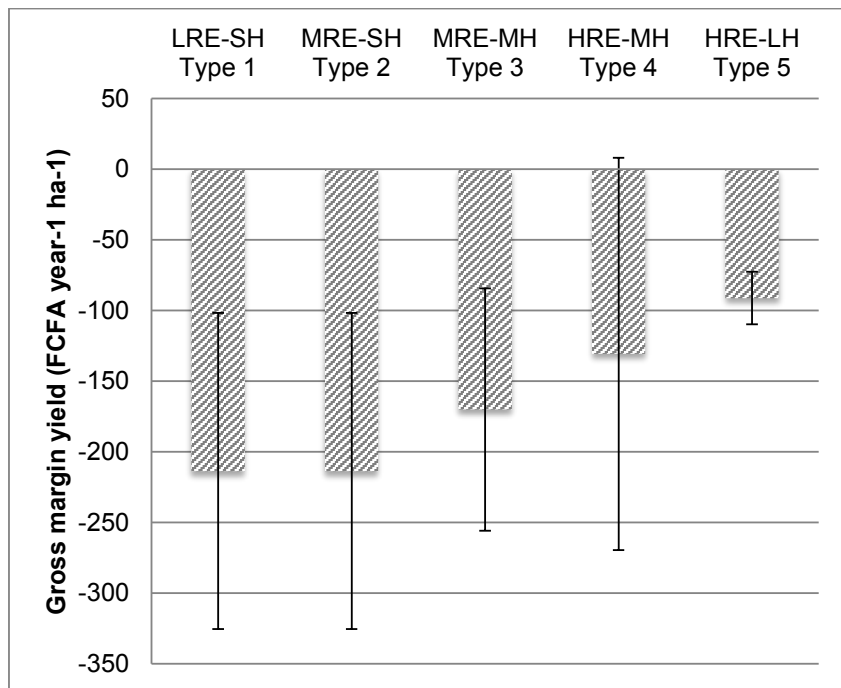
901 Figure 5: Agricultural income in the 2012-2013 cropping season according to the type of household

902

(1-5)

903 1.5 column

904



905

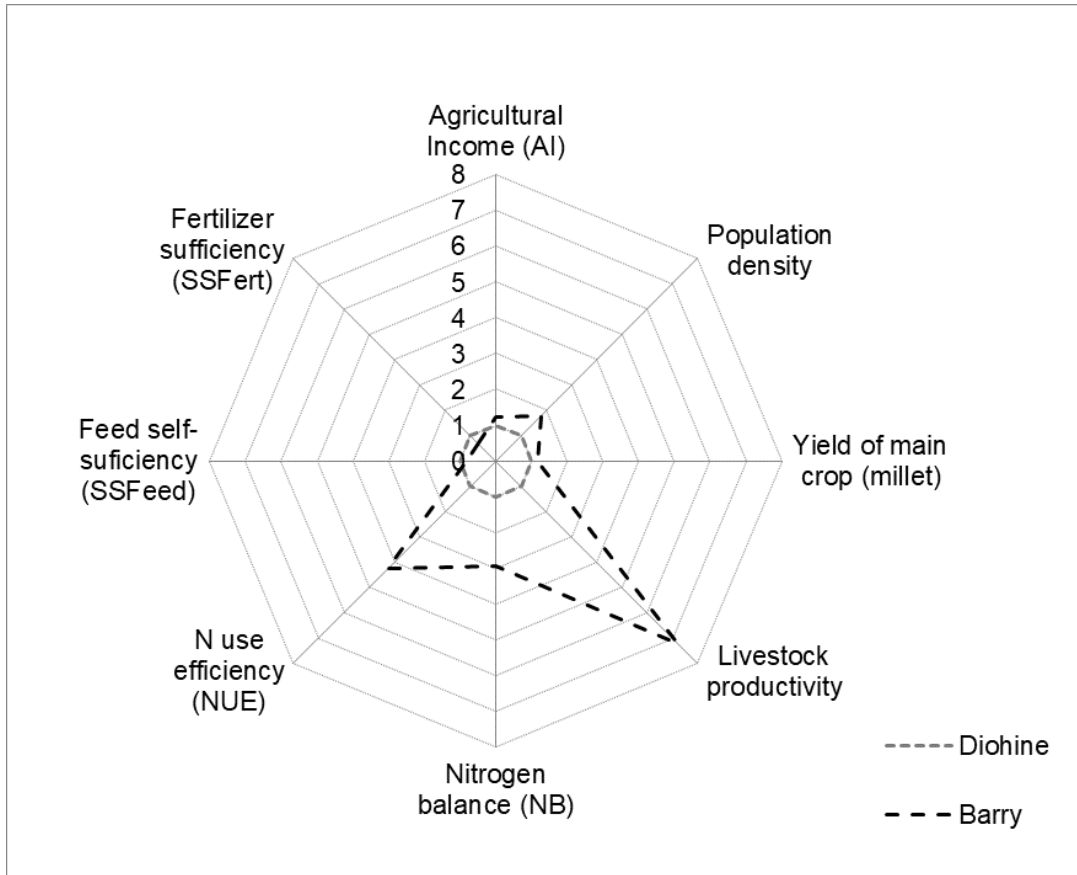
906 Figure 6: Average gross margin yield according to the type of household in the 2012-2013 cropping

907

season

908 1.5 column

909



910

911 Figure 7: Synthesis of the main sustainability indicators at village *terroir* level for Diohine and Barry

912

in 2012

913

*1.5 column*

914

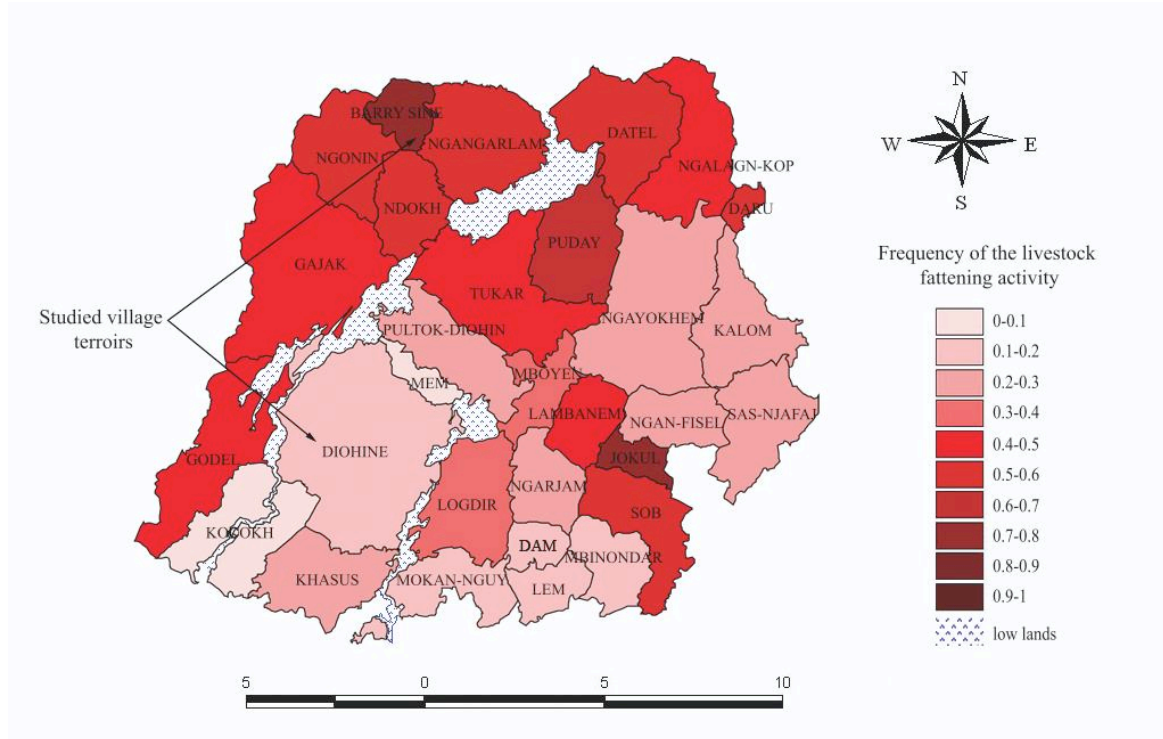


Figure 1. Portion of holdings that practice livestock fattening in 2012 in the 30 village *terroirs* of the Niakhar demographic and health observatory (Delaunay et Lalou, 2012).

2 columns, color



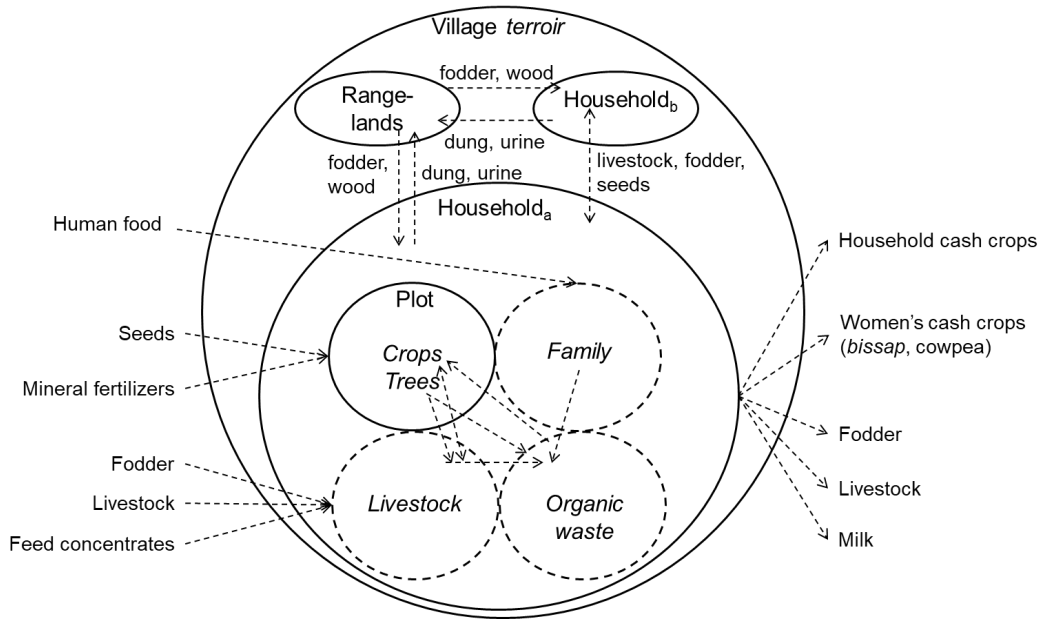


Figure 2. Conceptual stock-flow model of the system studied with three interlocking systems: plot, household and *village terroir*

1.5 columns

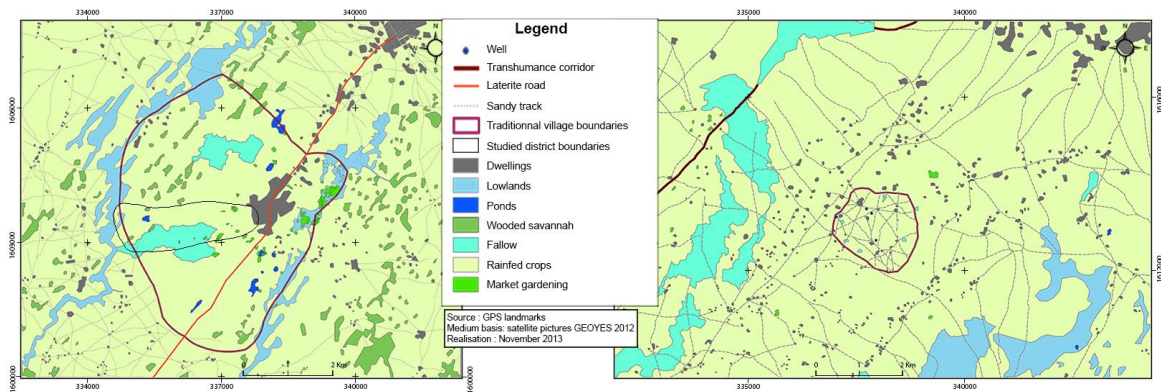


Figure 3. Agro-ecological zoning of Diohine (left) and Barry (right) during the 2012-2013 cropping season.

*2 columns, color*

	June	July	August	September	October	November	December	January	February	March	April	May
Climatic season	Wet season				Cool dry season				Hot dry season			
Millet cropping	++	++	++	++	++	++	++	+				+
Groundnut cropping		+	++	++	+							
Presence of transhumant herd	+						+	++	++	++		
Grazing periods in fallow (Diohine)		+	++	++	++	++	+					
Bovine fattening (Barry)	++	+				+	++	++	++	++	++	++
Ovine fattening (Barry)		+	++	++	++							
Religious Muslim events (in 2012)			Korité X		Tabaski X	Tamkhalet X		Magal X				

Figure 4. Livestock farming and cropping practices intensity described as a function of the seasons in the Niakhar region in the former groundnut basin of Senegal

2 columns

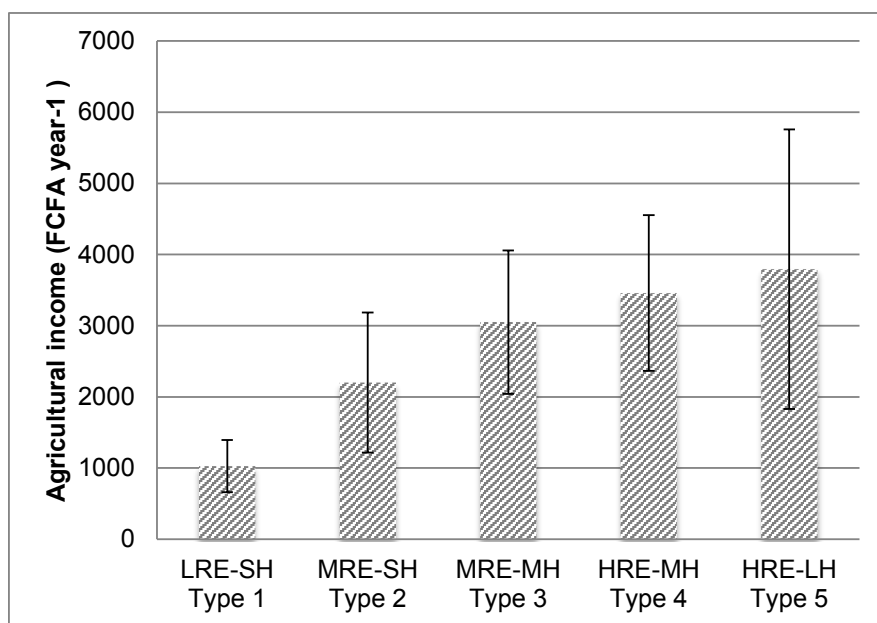


Figure 5: Agricultural income in the 2012-2013 cropping season according to the type of household

(1-5)

*1.5 column*

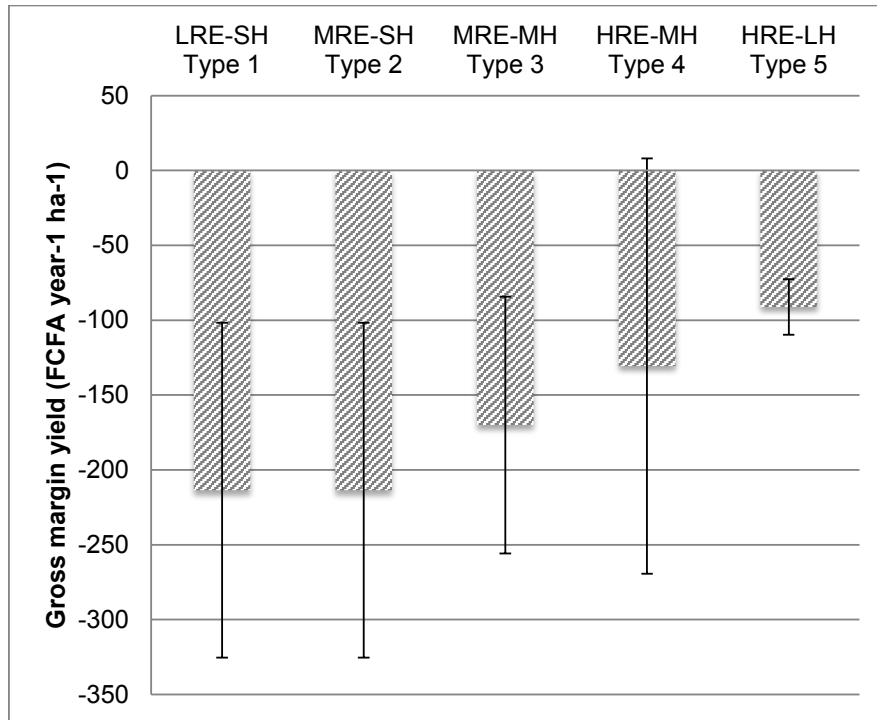


Figure 6: Average gross margin yield according to the type of household in the 2012-2013 cropping season

*1.5 column*

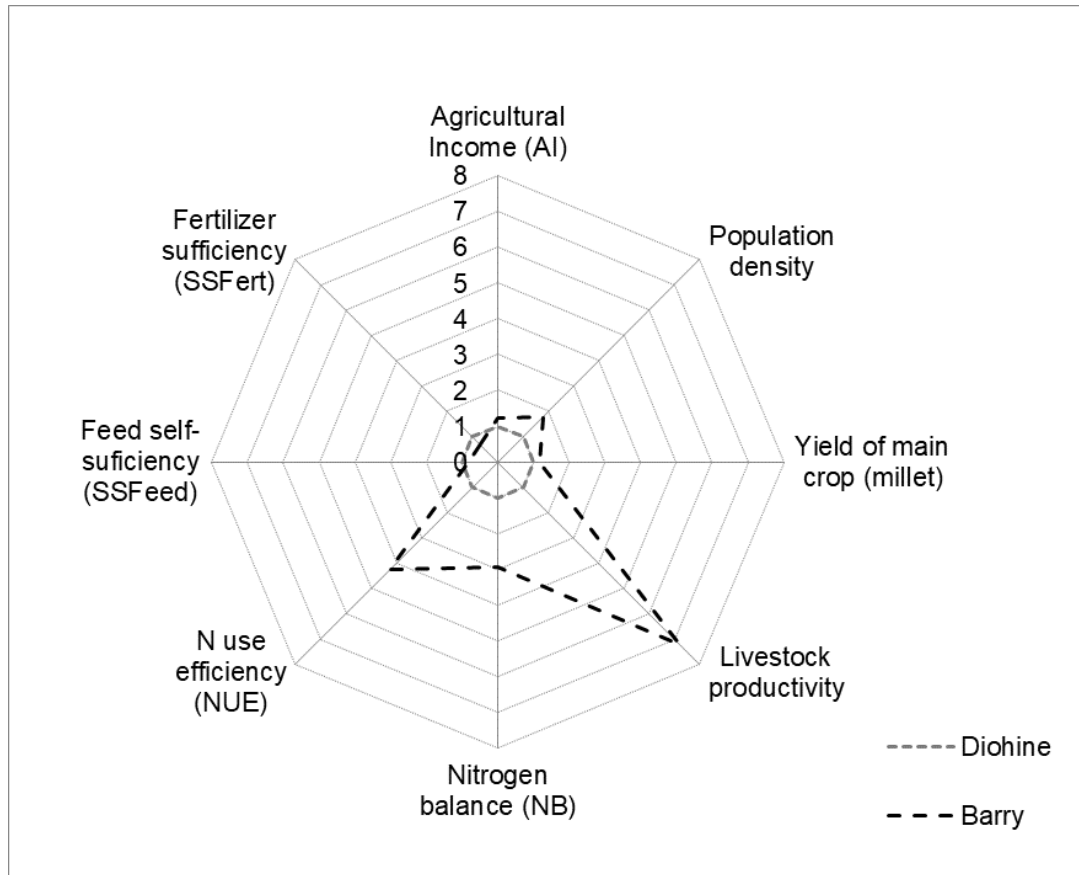


Figure 7: Synthesis of the main sustainability indicators at village *terroir* level for Diohine and Barry in 2012

1.5 column

Table 1. Main features of the five types of household in Diohine and Barry

Number given to type		1	2	3	4	5
Code name of type		LRE-SH	MRE-SH	MRE-MH	HRE-MH	HRE-LH
Livestock stocking rate	TLU ha <sup>-1</sup>	1.3	1.3	3.1	3.6	3.7
Importance of livestock fattening	% of total TLU	23	15	32	03	59
Population density	capita ha <sup>-1</sup>	4.5	2.8	4.2	3.1	6.3
Total cultivated area	ha	3.8	5.5	5.2	5.3	4.9
Importance of groundnut	% of TCA	26	19	32	8	20
Importance of fallow	% of TCA	2	11	2	19	0
Free-grazing plant biomass balance ( $\Delta$ FG)	kgDM ha <sup>-1</sup> year <sup>-1</sup>	-225	-61	-2	3451	-566
Manure inputs during night corralling	kgDM ha <sup>-1</sup> year <sup>-1</sup>	113	25	218	758	323
Free-grazing and night corralling balance	kgN ha <sup>-1</sup> year <sup>-1</sup>	0.15	2.99	8.43	3.69	9.93
Availability of solid manure from livestock housed in barns	TLU.h	24843	19431	49274	12505	95522
Solid manure input rate per livestock tethered close to the homestead	kgN TLU.h <sup>-1</sup>	0.00030	0.00063	0.00040	0.00055	0.00012
Nitrogen balance at household level	kgN ha <sup>-1</sup> year <sup>-1</sup>	52.6	-0.2	42.4	43.0	151.0
Percentage of household in Diohine	%	11	78	0	11	0
Percentage of household in Barry	%	26	49	19	0	6

Table 2. Main indicators of crop fertilization at plot level, average results for the total cultivated area (TCA) in Diohine and Barry for the 2012-2013 cropping season

Indicator	Units	Diohine	Barry
<i>Herd-driven deposition of excreta during free grazing</i>			
Rate of deposition during free grazing	% IN	46	25
Balance of flows driven by free-grazing livestock- in the wet season	kgN ha <sup>-1</sup>	-8.32	-26
Balance of flows driven by free-grazing livestock- in the dry season	kgN ha <sup>-1</sup>	0.55	5.04
<i>Herd-driven deposition during night corralling</i>			
Input rate during night corralling in the wet and dry season	% IN	15	15
Night corralling area in the wet season	% TCA	2.7	0.2
Deposition of excreta during night corralling in the wet season	kgDM ha <sup>-1</sup>	83	20
Night corralling area in the dry season	% TCA	3	39
Deposition of excreta during night corralling in the dry season	kgDM ha <sup>-1</sup>	51	204
<i>Human application of solid manure</i>			
Inputs of solid manure as a percentage of total inputs	% IN	14	12
Area of application of solid manure	% TCA	22	31
Volume of manure applied	kgDM ha <sup>-1</sup>	337	482
<i>Human application of mineral fertilizer</i>			
Inputs of mineral fertilizer as a percentage of total inputs	% IN	8	27
Area of application of mineral fertilizer	% TCA	2	27
Volume of mineral fertilizer applied	kgN ha <sup>-1</sup>	1.09	6.28
<i>Human application of waste</i>			
Waste inputs as a percentage of total inputs	% IN	14	16
Area of application of waste	% TCA		
Volume of waste applied	kgN ha <sup>-1</sup>	1.86	3.75
<i>Human application of seeds</i>			
Seeds input as a percentage of total inputs	% IN	3	6
Area of application of seeds	% TCA	100	100
Volume of seeds applied	kgN ha <sup>-1</sup>	0.47	1.30



Table 3. Yields of main crop -products and by-products at plot level; Proportion of by-products left on the ground for the 2012-2013 cropping season in Diohine and Barry.

Indicator	Units	Diohine	Barry
<i>Yields of main products</i>			
Millet ear	kgDM ha <sup>-1</sup>	626	727
Sorghum ear	kgDM ha <sup>-1</sup>	480	779
Groundnut pod	kgDM ha <sup>-1</sup>	371	366
<i>Byproducts yields</i>			
Millet straw	kgDM ha <sup>-1</sup>	1 823	2 418
Sorghum straw	kgDM ha <sup>-1</sup>	1 067	2 505
Groundnut hay	kgDM ha <sup>-1</sup>	1 171	696
<i>Proportion of by-products left on the grounds</i>			
Millet	%	60	43
Sorghum	%	44	13
Groundnut	%	31	0

Table 4. N flows entering, leaving, and circulating within village *terroirs* and corresponding N-flow-based indicators at village *terroir* level for Diohine and Barry for the 2012-2013 cropping season

	Units	Diohine	Barry
<i>Input flows</i>			
Human food	kgN ha <sup>-1</sup>	3.73	4.85
Seeds	kgN ha <sup>-1</sup>	0.21	0.38
Mineral fertilizers	kgN ha <sup>-1</sup>	0.92	5.16
Direct withdrawal biomass <sup>1</sup>	kgN ha <sup>-1</sup>	0.74	0.88
Livestock	kgN ha <sup>-1</sup>	0.60	33.51
Fodder	kgN ha <sup>-1</sup>	0.22	0.37
Feed concentrates	kgN ha <sup>-1</sup>	3.39	23.67
<i>Output flows</i>			
Main crop products	kgN ha <sup>-1</sup>	0.11	0.88
Crop by-products	kgN ha <sup>-1</sup>	0.02	0.12
Livestock	kgN ha <sup>-1</sup>	1.00	42.48
Milk	kgN ha <sup>-1</sup>	0.00	0.37
Manure and urine	kgN ha <sup>-1</sup>	0.31	0.10
<i>Summary of flows</i>			
Total inputs (IN)	kgN ha <sup>-1</sup>	10.06	68.82
Total outputs (ON)	kgN ha <sup>-1</sup>	1.55	43.95
Total system throughflow (TST)	kgN ha <sup>-1</sup>	14.14	18.02
Dependence (D=IN/TST)	dmnl	2.03	12.66
SSFeed	%	86	70
SSFert	%	96	67
N balance (NB)	kg ha <sup>-1</sup>	8.51	24.88
N use efficiency (NUE)	dmnl	0.15	0.64

<sup>1</sup> Free grazing of plant biomass outside the boundaries of the village