



The school-family relationship: a problem studied within a participatory research in a kindergarden in priority education

Caroline Hache, Valérie Webb, Estelle Kerbrat, Odile Thuilier

► To cite this version:

Caroline Hache, Valérie Webb, Estelle Kerbrat, Odile Thuilier. The school-family relationship: a problem studied within a participatory research in a kindergarden in priority education. Mid-Term Conference of AIS-EDU, Apr 2023, Palerme (Italy), Italy. hal-04424960

HAL Id: hal-04424960

<https://amu.hal.science/hal-04424960>

Submitted on 29 Jan 2024

HAL is a multi-disciplinary open access archive for the deposit and dissemination of scientific research documents, whether they are published or not. The documents may come from teaching and research institutions in France or abroad, or from public or private research centers.


L'archive ouverte pluridisciplinaire **HAL**, est destinée au dépôt et à la diffusion de documents scientifiques de niveau recherche, publiés ou non, émanant des établissements d'enseignement et de recherche français ou étrangers, des laboratoires publics ou privés.

THE SCHOOL-FAMILY RELATIONSHIP: A PROBLEM STUDIED WITHIN A PARTICIPATORY RESEARCH IN A KINDERGARTEN IN PRIORITY EDUCATION.

Caroline HACHE, Valérie WEBB, Estelle KERBRAT, Odile THUILIER

Aix-Marseille Université - Académie d'Aix-Marseille

CONTEXT: THE SCHOOL-FAMILY RELATIONSHIP

- 
- 1882 : parents are the guarantors of the attendance of pupils or their education
 - 1953 : punishment for families who fail to attend school
 - 1990: parents are designated as the school's primary partners
 - 2000: Encouragement of stronger relationships with families
 - 2013: Strengthen cooperation between parents and schools
 - 2015 : School is also built through the participation of all parents

CONTEXT: PARTICIPATORY RESEARCH

Action research, teacher research, classroom research, co-learning, co-operative inquiry, critical reflection, or practical inquiry.

- Research, not "on" but "with"
- Comprehensive approach
- Co-construction between partners
- Research development - professional development of the power to act

PROBLEMATIC

Benefits and limitations of collaborative research to study the school-family relationship

POSTURE AND ROLE OF THE RESEARCHER

The researcher is a resource person able to express the research and to dialogue with the field.

METHODOLOGY

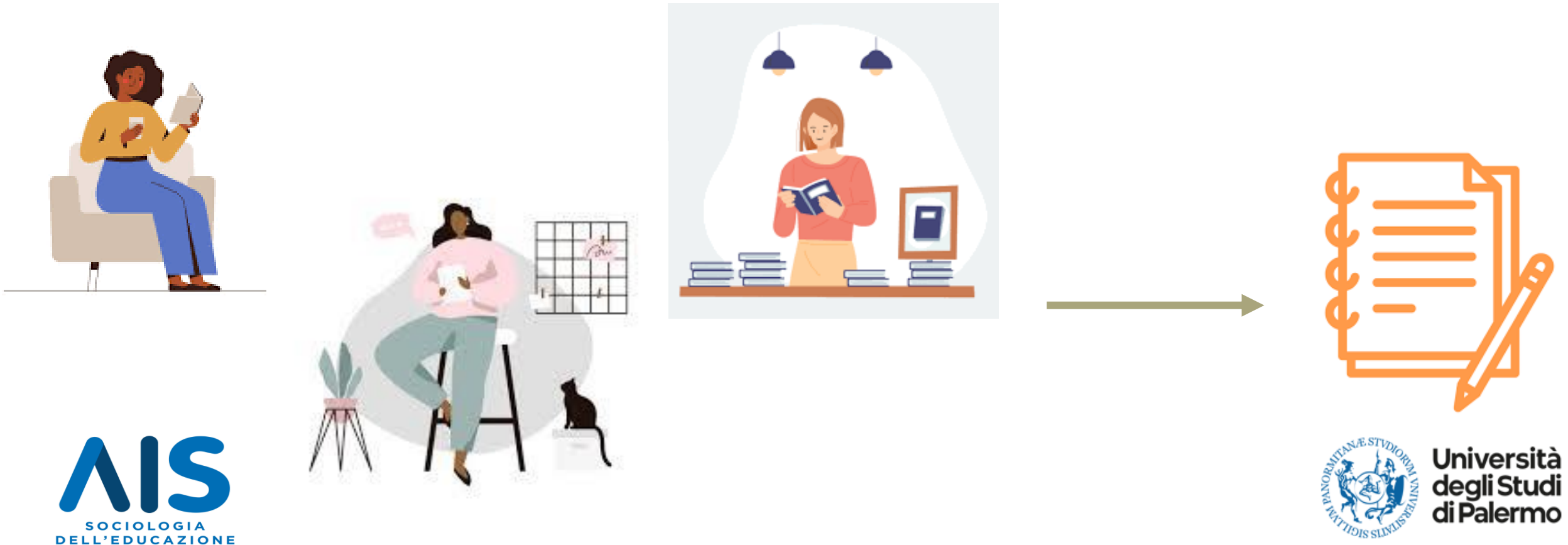
METHODOLOGY : CROSSED VIEWS AND SINGULAR WORDS

A team was created

- Three actors: a teacher, an educational supervisor, a researcher
- An outside observer: a researcher

METHODOLOGY : CROSSED VIEWS AND SINGULAR WORDS

Step 1: Reading of inspirational texts to build the interview guide (Caouette, 2012)



METHODOLOGY : CROSSED VIEWS AND SINGULAR WORDS

Step 2: cross-over interview



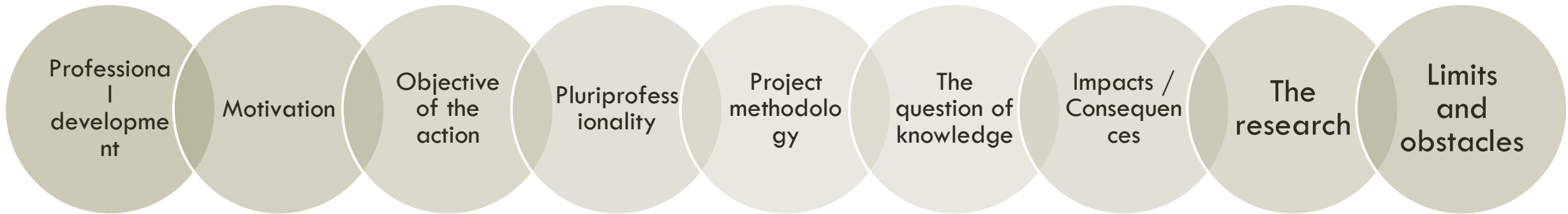
METHODOLOGY : CROSSED VIEWS AND SINGULAR WORDS

Step 3: Cross-categorization



RESULTS

RESULTS: QUESTIONS FROM THE INSPIRATIONAL READINGS



RESULTS: MULTI-PROFESSIONAL CATEGORIZATION OF VERBATIMS

Converging categorizations:

- Professional development
- Research functions
- Contrasting temporalities
- Research ethics

PROFESSIONAL DEVELOPMENT

“ What does it mean to co-produce knowledge?”

“in what way do I, from my place, produce knowledge and which one?”

“for me, it refers to the notion of reflective practitioner”

FUNCTIONS OF THE RESEARCH

Distancing

"taking the high ground"; "raising awareness"; "I didn't know that, I didn't think about it"

Objectivize the daily routine

"have a research team at the beginning to have, to be able to objectify this absenteeism"

Learnings

"what I really learned...was...about the importance of making school readable visible understandable to parents." "bring in research content, that is, a little bit of current research on the school-family relationship."

CONTRASTING TIMEFRAMES

Research time is a long time:

"loss of memory from one session to the next, maintaining a necessary vigilance"

Research time as a third party for reflexivity:

"it seems to me that on my side I have a more rigorous reflection than before but afterwards I say to myself that it is also... the work we did together"

"we really settle down, we take the time, we look at what was done before, that's it, it moves forward completely differently, step by step, you know what I mean."

RESEARCH ETHICS:

Mutual trust relationships

"it shows a trusting relationship that has been built when someone is able to ... say a negative review"

Contractualization

"how to operationalize the collaboration, formalize the contract along the way between all parties"

"the parents are solicited and in what way do they have a feedback, what place from the moment their data is used?"

SINGULAR CONCERNS

What reciprocity in research?

"research takes and gives what?"

Times opened up by the research

DISCUSSION

WHAT ARE THE EXPECTED EFFECTS?

- Facilitating conditions for a research with.
- Unavoidable institutional commitment
- Necessity to have the agreement of the parents involved in the uses of their participation
- Constant concern to translate and validate the point of view of the partners solicited

WHAT ARE THE UNEXPECTED EFFECTS?

The place of parents is still insufficient

"parents are solicited and in what way do they have feedback, what place from the moment their data is used?"

Being baffled, the power of the unexpected

"I didn't expect it"

Co-writing

BIBLIOGRAPHIE

Demailly L., Zay D. (1994) Gestion de la recherche et formation de formateurs d'enseignants. À quelles conditions institutionnelles la recherche peut être un outil de formation pour un groupe professionnel ? In: *Recherche & Formation, Recherche et développement professionnel*, 17, 47-64

Desgagné, S., Bednarz N., Couture C., Poirier L., Lebus P. (2001). L'approche collaborative de recherche en éducation : un rapport nouveau à établir entre recherche et formation. *Revue des sciences de l'éducation*, vol. 27, n° 1, p. 33-64.

Galatanu O. (1994) Écriture et argumentation dans la recherche professionnelle comme outil de formation. In: *Recherche & Formation, Recherche et développement professionnel*, 17, 93-102.

Marcel, J-F (2016) La recherche-intervention : question(s) de forme(s). Dans : Jean-François Marcel éd., *La recherche-intervention par les sciences de l'éducation : Accompagner le changement* (pp. 223-230). Educagri éditions.

Paillard B. (2008) . Plozévet, la première recherche coopérative sur programme. À l'aube de la recherche incitative. In: *Les Annales de la recherche urbaine, L'expertise au miroir de la recherche*. 104, 138-148

BIBLIOGRAPHIE

Vinatier, I., Morissette, J. (2015) Les recherches collaboratives : enjeux et perspectives, *Carrefours de l'éducation*, 39, 137-170