



HAL
open science

PIEZO Ion Channels in Cardiovascular Functions and Diseases

Bertrand Coste, Patrick Delmas

► **To cite this version:**

Bertrand Coste, Patrick Delmas. PIEZO Ion Channels in Cardiovascular Functions and Diseases. Circulation Research, 2024, 134 (5), pp.572-591. 10.1161/CIRCRESAHA.123.322798 . hal-04573586

HAL Id: hal-04573586

<https://amu.hal.science/hal-04573586v1>

Submitted on 11 Oct 2024

HAL is a multi-disciplinary open access archive for the deposit and dissemination of scientific research documents, whether they are published or not. The documents may come from teaching and research institutions in France or abroad, or from public or private research centers.

L'archive ouverte pluridisciplinaire **HAL**, est destinée au dépôt et à la diffusion de documents scientifiques de niveau recherche, publiés ou non, émanant des établissements d'enseignement et de recherche français ou étrangers, des laboratoires publics ou privés.

PIEZO ion channels in cardiovascular functions and diseases

Bertrand Coste¹ and Patrick Delmas¹

¹Centre de Recherche en CardioVasculaire et Nutrition, Aix-Marseille Université - INSERM 1263 - INRAE 1260, Marseille, France

bertrand.coste@univ-amu.fr

patrick.delmas@univ-amu.fr

Short title: PIEZO channels in cardiovascular pathophysiology

citation of financial support: Our work is supported by recurrent operating grants from the CNRS, Aix-Marseille Université, and by fundings from the European Research Council (ERC) under the European Union's Horizon 2020 research and innovation program (grant agreement no. 678610 to B.C.), the European Commission ERA-NET scheme in the H2O20 Horizon program (ERACoSysMed, DYNAFLOW), (to P.D.) and by fundings from the Institute Imagine (to P.D).

The authors declare no competing interests.

Abstract

The cardiovascular system provides blood supply throughout the body and as such is perpetually applying mechanical forces to cells and tissues. Thus, this system is primed with mechanosensory structures that respond and adapt to changes in mechanical stimuli. Since their discovery in 2010, PIEZO ion channels have dominated the field of mechanobiology. These have been proposed as the long-sought-after mechanosensitive excitatory channels involved in touch and proprioception in mammals. However, more and more pieces of evidence point to the importance of PIEZO channels in cardiovascular activities and disease development. PIEZO channel-related cardiac functions include transducing hemodynamic forces in endothelial and vascular cells, red blood cell homeostasis, platelet aggregation, and arterial blood pressure regulation, amongst other. PIEZO channels contribute to pathological conditions including cardiac hypertrophy and pulmonary hypertension, and congenital syndromes such as generalized lymphatic dysplasia and xerocytosis. In this review, we highlight recent advances in understanding the role of PIEZO channels in cardiovascular functions and diseases. Achievements in this quickly expanding field should open a new road for efficient control of PIEZO-related diseases in cardiovascular functions.

List of abbreviations

ADM: adrenomedullin; AKT1: serine-threonine protein kinase 1, also known as protein kinase B; ANXA2: Annexin A2; AS: atherosclerosis; ASIC2: acid sensing ion channel 2; AT1: angiotensin II receptor type 1; BP: blood pressure; BRS: baroreflex sensitivity; CALCRL: calcitonin receptor-like; CAMKII: Ca²⁺/calmodulin-dependent protein kinase II; COMP: cartilage oligomeric matrix protein; CSF: cerebrospinal fluid; DHS: dehydrated hereditary stomatocytosis; ECM: extracellular matrix; eNOS: endothelial NO synthase; FAK: focal adhesion kinase; γ ENaC: epithelial sodium channel γ subunit; GLD: generalized lymphatic dysplasia; GOF: gain-of-function; HDAC4: histone deacetylase 4; HUVEC: human umbilical vein endothelial cell; ICAM-1: intercellular adhesion molecule-1; ICP: intracranial pressure; JG: juxtaglomerular; LAD: left anterior descending; LOF: loss-of-function; LVH: left ventricular hypertrophy; MEF2: myocyte enhancer factor 2; MLV: meningeal lymphatic vessels; mTORC2: serine/threonine kinase mTOR complex 2; NCX1: Na⁺/Ca²⁺ exchanger isoform 1; Nedd4-2: neural precursor cell-expressed developmentally downregulated gene 4 type 2; NFAT: nuclear factor of activated T cells; NF- κ B: nuclear factor kappa-

light-chain-enhancer of activated B cells; NO: nitric oxide; OFT: outflow tract; PECAM-1: platelet endothelial cell adhesion molecule; PKA: cAMP-dependent protein kinase; PKN2: serine/threonine-protein kinase N2; PLA2: phospholipase A2; PLC β : phospholipase C beta; PTP1B: protein-tyrosine phosphatase 1B; RAAS: renin-angiotensin-aldosterone system; RBC: red blood cell; ROS: reactive oxygen species; SAC: stretch-activated ion channel; TAC: transverse aortic constriction; TAZ: transcriptional coactivator with PDZ-binding motif; T_{reg}: regulatory T cell; TRPC5: TRP channel classical subtype 5; TSP2: thrombospondin-2; TTN3: tentonin 3; VE: vascular endothelial; VEGFR2: vascular endothelial growth factor receptor 2; YAP: yes-associated protein.

Introduction

All cells in our body are subject to mechanical forces. If gravity constitutes a non-specific physical constrain, cells present in various tissues experience specific mechanical forces, such as compressive forces generated by external stimuli or skeletal muscle contractions during locomotion, mechanical stress and strain caused by cyclic distension and contraction of the heart and lungs or shear stress generated from fluid flows.¹ Cells can also generate endogenous forces such as traction stresses induced by cytoskeletal assembly.² These physical constrains are sensed by cells through mechanotransduction, the translation of these forces into biochemical signals, that lead to mechanosensitive feedback critical for cellular functions, organ development and homeostasis. Since the discovery of mechanosensitive PIEZO ion channels in 2010,³ hundreds of publications illustrate their fundamental role in physicochemical interactions, morphogenesis, tissue homeostasis, remodeling and pathogenesis in humans. The discovery of this new class of ion channels has yielded important insights into the mechanisms of somatosensation, as well as other mechano-associated biologic processes such as lung volume regulation, bone homeostasis, regulation of urine flow and bladder distention, as well as gastrointestinal motility and development, migration and proliferation of a variety of cell types (for reviews see ⁴⁻⁶). PIEZO force transducers exist throughout the cardiovascular system, and signal to multiple biochemical pathways that have pathophysiological relevance in cardiovascular biology.^{7,8} Noticeably, mechanobiology of the cardiovascular system does not rely only on PIEZO channels, and extensive research documented molecular players involved in mechano-signaling pathways in cardiovascular cells including other ion channels, G-protein coupled receptors, adhesion molecules, cytoskeletal components, and a variety of signaling molecules and elements of the extracellular matrix (for detailed review see ⁹). This review highlights the exciting research on PIEZO channels in cardiovascular functions and diseases.

General Description of PIEZO protein channels

PIEZO1 and PIEZO2 are widely expressed in a variety of tissues and organs and have been linked to many physiological functions in mammals.^{4,5,10} They form prototypical mechanosensitive ion channels with mechanical input acting as the gating stimulus opening a non-selective cationic pore.^{3,6,11} Both isoforms share the same general architecture. Each channel is formed by homotrimeric assembly of three protein subunits and has a three-blade propeller architecture topped with a cap that connects to

the pore helices (Figure 1).¹²⁻¹⁶ Each subunit has 38 transmembrane segments, the first 36 forming one of the surrounding blades, whereas the two C-terminal helices associate with those of other subunits to form the central pore module. The inherent mechanosensitivity of PIEZO channels has been demonstrated by reconstituting purified mPIEZO1 into artificial lipid bilayers.¹⁷ The pore module has no force-sensing capabilities,¹⁸ implying that mechanosensitivity is conferred by the flexible blades, each blade being connected to the pore by an intracellular beam (Figure 1).^{14,19} Blades have the particularity of being curved, which likely leads to the bowl-shaped configuration of PIEZO-inserted artificial membrane. PIEZO conformational changes and activation was proposed to result from membrane flattening of supported lipid vesicles in response to mechanical stimulus.^{15,20} Importantly, the correlation between PIEZO1 activation and blade expansion has been demonstrated using nanoscopic imaging in live cells, in which the plasma membrane directly acts to expand the blades of PIEZO1 at rest potentially conferring exquisite sensitivity to membrane tension (Figure 1).²¹ The extracellular cap may be important for setting the inactivation kinetics of PIEZO channels as for providing a physical connection between the blade and the ion-conducting pathway (Figure 1).^{20,22}

PIEZOs are multi-modal mechanosensitive channels activated by diverse forces, including shear stress, cellular compression, membrane tension, cell swelling, and ultrasounds.^{17,23-29} PIEZO channels typically display rapid activation and inactivation kinetics, although the latter may depend on the cellular context and specific membrane mechanical properties.^{22,30-32}

PIEZO channels have been reported to interact with some cytoskeletal or extracellular matrix components that may modulate their mechanical sensitivity,^{33,34} as well as with MyoD-family inhibitor proteins modulating their gating properties,³² but no endogenous chemical agonist has been reported so far. However, some pharmacological compounds targeting these channels have emerged and constitute valuable tools to study PIEZO functions. These chemicals allow to directly modulate PIEZO channel activity without using a sophisticated method of mechanical stimulation that often constitutes a technical challenge. A screen of about 3.25 million compounds led to the identification of Yoda1, a PIEZO1 agonist-like molecule conferring activity in the absence of exogenous mechanical stimulation by lowering the pressure sensitivity of the channel.³⁵ Yoda1 displays an half-maximal effective concentration (EC₅₀) of about 25 μ M for human PIEZO1³⁵ and binds to a pocket localized in each of the channel blades, energetically modulating mechanosensory domains and channel gating.^{36,37} Yoda1 has poor aqueous solubility at greater concentration than $\approx 20 \mu$ M³⁵ but is currently the most widely used chemical activator to study the contribution of PIEZO1 to various biological functions. New

pharmacological compounds derived from Yoda1 have been described.^{38,39} In addition, Wang et al.⁴⁰ identified a new set of PIEZO1 chemical activators called Jedi, though with low potencies ($EC_{50} \geq 150 \mu\text{M}$), limiting their use in exploratory experiments. Future challenges in drug discovery for PIEZO channels are the development of agonists targeting PIEZO2s, as well as the identification of specific blockers of PIEZO1 and PIEZO2. Indeed, these channels are blocked by some trivalent cations and by the multivalent cationic compound ruthenium red,³ which are non-selective inhibitors of cationic channels, as well as by the GsMTX-4 spider toxin,⁴¹ an amphipathic peptide acting by inserting into the membrane and affecting mechanosensitive channels non-specifically.⁴²

Expression of PIEZO1 and PIEZO2 in human cardiovascular cells

As pivotal mechanosensors, PIEZO proteins are found in organisms from unicellular protists and plants to vertebrates and mammals.³ PIEZO1 in mammals is mainly expressed in non-neural tissues, with particularly high expression in the lung, bladder, kidney, and skin, whereas PIEZO2 channel is predominantly present in sensory cells, such as trigeminal and dorsal root ganglion sensory neurons and Merkel cells, where its deletion leads to deficits in touch sensation and proprioception.^{3,43-45} There is increasing evidence of the expression of PIEZO proteins in cardiovascular cells, including endothelial cells, cardiomyocytes, cardiac fibroblasts, and vascular smooth muscle cells. PIEZO1 expression in the endothelium and endocardium starts between embryonic day (E)9 and E10.5.^{27,29} Mice with constitutive PIEZO1 inactivation show major pericardial effusion and embryo died at mid gestation. These mice lacked major blood vessels, and had disorganized embryonic vasculature, suggesting the importance of PIEZO1 in early vascular development.^{27,29} Moreover, specific invalidation of *PIEZO1* in mouse endothelial cells causes damaged lymphatic valve formation in mice.^{46,47} By contrast, *PIEZO2* gene is expressed in neurons of the nodose-petrosal-jugular ganglia, where it participates to the baroreceptor reflex in mice.⁴⁸ In summary, these studies set a major role for PIEZO1 channels in non-neuronal cardiovascular cells, while PIEZO2 appeared restricted to nerve cells. Of note *PIEZO1* mRNA is highly expressed in the sinoatrial node, the primary pacemaker of the heart, but PIEZO1 role has yet to be determined. Altered hemodynamic load can modulate the activity of the sinoatrial node through the Bainbridge reflex, also called the atrial reflex, which occurs when the heart rate increases in response to a rise in atrial pressure.⁴⁹

Single cell databases from human cardiovascular tissues accord well with data in mice. *PIEZO1* transcript was found to be ubiquitous in cardiovascular cells, including vascular endothelial cells, vascular fibroblasts, vascular smooth muscle cells and erythroids, although difference could be observed between cell types (Figure 2). Highest level (≈ 50 nTPM) is found in vascular endothelial cells, which represents a level of expression close to those observed in highest *PIEZO1* expressing tissue types, e.g. breast endothelial cells (102.8 nTPM), adipose tissue adipocytes (96.7 nTPM) and ovary lymphatic endothelial cells (92 nTPM) (<https://www.proteinatlas.org/>). *PIEZO2* transcripts are hardly detectable in human cardiovascular cells. However, it should be kept in mind that the correlation between mRNA levels and protein abundance was not observed in many studies on human tissues.⁵⁰

The role of PIEZOs in the vasculature

PIEZO1 transduces hemodynamic forces to regulate endothelial cell homeostasis and vascular function

A monolayer of endothelial cells (ECs) lines the inner surface of all blood vessels (arteries, capillaries, and veins). EC functions are regulated by chemical mediators such as hormones, cytokines and neurotransmitters, as well as mechanical stress produced by hemodynamic forces.⁵¹ Indeed, ECs constantly experience shear stress at their surface, a tangential force exerted by circulating blood that can arise from laminar or disturbed flow, as well as stretch induced by cyclic strain due to pulsatile change in blood pressure (Figure 3). Under normal conditions, a dynamic balance between hemodynamic forces and biological responses maintains endothelial integrity, whereas perturbation of blood flow that occurs with atherosclerosis or hypertension leads to vascular remodeling and dysfunction.⁵²⁻⁵⁵ ECs are equipped with many mechanosensors or responsive microdomains, such as cell-cell junctional proteins and adhesion molecules, receptors, ion channels, membrane microdomains, and glycocalyx, that sense and transduce hemodynamic forces to regulate EC homeostasis and vascular function,⁵⁶ among which PIEZO1 emerges as a key player. Indeed, PIEZO1 channels are present both in the apical endothelial membrane and at the inter-endothelial junction complexes where they interact with platelet endothelial cell adhesion molecule-1 (PECAM1).^{27,29,57} At these sites, PIEZO1 channels are activated by shear stress and could sense stretch/membrane tension, respectively. Constitutive PIEZO1 ablation in mouse causes embryonic lethality before E14.5 due to impaired vasculature development and defective circulation, including vasculature disorganization and

major pericardial effusion.^{27,29} Importantly, specific invalidation of *PIEZO1* in endothelium also leads to embryonic or early post-natal lethality pointing out that this phenotype is caused by lack of *PIEZO1* in ECs.^{27,47} This illustrates *PIEZO1* pivotal role in the development of the cardiovascular system in mammals. In zebrafish, *PIEZO1* has also been shown to coordinates the outflow tract (OFT) valve formation by driving the response to hemodynamic forces. Indeed, *PIEZO1* modulates Kruppel-like factor 2 and Notch activity in the endothelium and Yap1 localization in smooth muscle progenitors.⁵⁸ All these factors are necessary for OFT valve morphogenesis in vivo in response to mechanical forces. Inactivation of *PIEZO1* leads to defective OFT and aortic valve development.^{58,59}

Shear stress and cyclic strain on ECs are involved in numerous biological functions such as cell shape and orientation, proliferation and apoptosis, vascular tone modulation, antithrombotic activity, production and elimination of reactive oxygen species (ROS) and gene expression changes.⁹ Since *PIEZO1* acts as the upstream initiator of many force-related signalization pathways, accumulating evidence documents its crucial role for EC functions. However, deciphering the endothelial functions of *PIEZO1* is complexified by EC heterogeneity among organs and vessel types.⁶⁰ Characterization of *PIEZO1* signaling pathways in ECs from diverse origins shows that the vascular bed specificity is crucial regarding *PIEZO1* functions in endothelium. An illustration of this specificity comes from *PIEZO1* contribution to performance during exercise. As fluid flow increases, endothelial *PIEZO1* contributes to constriction of mesenteric resistance arteries with the purpose of directing the blood flow away from the gastrointestinal tract, but this effect of endothelial *PIEZO1* is absent in saphenous and carotid arteries supplying blood in legs and brain, respectively.⁶¹

***PIEZO1* regulates adherens junctions at endothelial barrier**

An important function of endothelial *PIEZO1* channels is their contribution to alignment of ECs to the direction of fluid flow^{27,29,62} and to adherens junction dynamics.^{57,63-65} By initiating localized force-dependent Ca^{2+} entry at cell-cell junction, *PIEZO1* channels participate to the formation and remodeling of adherens junctions.⁵⁷ *PIEZO1* channels are also required for leukocyte diapedesis, the movement of leukocytes out of the vascular system.⁶³ Leukocyte-induced clustering of intercellular adhesion molecule-1 (ICAM-1) at endothelial cell surface generates mechanical forces that synergize with low shear stress to activate endothelial *PIEZO1*. Subsequent downstream signaling leads to endothelial barrier opening and leukocyte extravasation.⁶³ In pathological conditions, such as increased lung microvessel pressure, endothelial *PIEZO1* activation leads to calpain-induced disruption of vascular endothelial (VE)-cadherin adhesion. This induces endothelial barrier disruption and promotes oedema

formation.⁶⁴ Moreover, in human umbilical vein ECs (HUVECs), high and prolonged shear stress stimulation of PIEZO1 leads to TRPV4 channel opening via activation of phospholipase A2 (PLA2). The resulting TRPV4-dependent sustained intracellular Ca^{2+} elevation is responsible for disruption of the adherens junctions and actin remodeling.⁶⁵ Therefore, PIEZO1 can act upstream of TRPV4 to induce pathological events. The functional coupling between PIEZO1 and TRPV4 characterized in HUVECs is likely dependent on the vascular bed, as activation of PIEZO1 or TRPV4 in hepatic portal vein ECs have opposing independent effects promoting relaxation and contraction, respectively.⁶⁶

PIEZO1 regulates endothelial NO production

Many physiological vascular consequences downstream of endothelial PIEZO1 activation depend on nitric oxide (NO) production, which is a major regulator of vascular homeostasis. Endothelial NO synthase (eNOS) is the main source of endothelium-derived NO and is activated by a myriad of signaling pathways downstream of receptor activation by vasoactive ligands as well as hemodynamic forces such as shear stress.⁶⁷ PIEZO1 plays a pivotal role in the conversion of hemodynamic forces to biological signals leading to eNOS activation by post-translational modifications (Figure 3A). Endothelial PIEZO1 activation can initiate several independent pathways leading to eNOS phosphorylation at different sites that can act synergistically to increase NO production (Figure 3A). By cooperating with Pannexin channels, endothelial PIEZO1 mediates flow-induced ATP release and subsequent auto/paracrine activation of Gq/G11-coupled P2Y2 receptors.⁶⁸ This pathway leads to the activation of protein kinase N2 that mediates direct phosphorylation of eNOS at serine 1179, as well as activation of the AKT serine-threonine protein kinase 1 (AKT1, also known as protein kinase B) synergistically with mTOR Complex 2 (mTORC2), which in turn mediates phosphorylation of serine 1177.^{68,69} In addition, phosphorylation of serine 1177 has been suggested to occur via PIEZO1-dependent CAMKII activation.³³ Endothelial PIEZO1 also initiates flow-induced adrenomedullin release and subsequent auto/paracrine activation of calcitonin receptor-like (CALCRL) receptor, leading to Gs-mediated increases in cAMP levels and resulting in PKA-dependent eNOS phosphorylation of serine 633.⁷⁰ Moreover, Yoda1 activation of PIEZO1 has been shown to promote tyrosine 81 phosphorylation of eNOS.⁷¹ Therefore, endothelial PIEZO1 activation initiates multiple pathways that enhance NO production and contributes to vascular tone homeostasis.

An illustration of endothelial PIEZO1-eNOS axis involvement in vascular homeostasis is its implication in stabilizing muscle capillary density.⁷² In muscle, endothelial PIEZO1 activation of eNOS induces NO production and diffusion to adjacent pericytes, where it leads to inhibition of thrombospondin-2 (TSP2)

production, an inducer of endothelial cell apoptosis. Consequently, endothelial PIEZO1 activity increases the stability of microvascular endothelium.⁷² Endothelial PIEZO1 has also been shown to interact with the cartilage oligomeric matrix protein (COMP) via its C-terminus. COMP is a matricellular glycoprotein that protects against endothelial dysfunction in hypertension. Its interaction with PIEZO1 regulates endothelium-dependent relaxation and blood pressure by increasing PIEZO1 activity and *in fine* NO production.³³

Pathogenic effects of endothelial PIEZO1 activity under disturbed flow

Its pivotal function as a hemodynamic force sensor not only confers endothelial PIEZO1 a critical role in maintaining physiological homeostasis under laminar flow, but also in the development of vascular pathologies under high or turbulent flow (Figure 3B). It has been reported that PIEZO1 is upregulated in pulmonary arterial endothelial cells during pulmonary hypertension,⁷³ and pharmacological manipulation of its activity has been reported to modulate vascular defects induced in models of vascular calcification,⁷⁴ hyperglycemia⁷⁵ and pulmonary hypertension.⁷⁶ Moreover, PIEZO1 is directly involved in atherosclerosis (AS),⁷⁷ a common condition corresponding to a slowly worsening chronic inflammatory disease (Figure 3B). Atherosclerosis occurs preferentially in branches and curves in arteries exposed to disturbed blood flow inducing inflammation, endothelial-mesenchymal transition, thrombosis, vasoconstriction and barrier dysfunction.⁷⁸ Atherosclerosis is characterized by a buildup of plaque made up of deposits of lipids and cellular waste products in the inner lining of the arteries. Consequently, the arteries become thickened, stiff, and narrow, reducing blood flow and oxygen supply to the vital body organs and extremities, and is the pathological basis of many cardiovascular diseases. Interestingly, PIEZO1 drives opposite effects under laminar or disturbed flow. Indeed, signaling initiated by PIEZO1, the purinergic P2Y2 receptor and Gq/G11 activation, which under laminar flow results in atheroprotective eNOS activation, leads to an atheroprone inflammatory signaling involving $\alpha 5$ integrin-dependent NF- κ B activation under disturbed flow.⁷⁷ Still under disturbed flow, PIEZO1-Ca²⁺ activation of protein tyrosine phosphatase 1B leads to annexin A2 dephosphorylation and binding to integrin $\alpha 5\beta 1$, promoting its translocation and activation, again constituting an atheroprone signaling.⁷⁹ While laminar and disturbed flow both initiate calcium influx through PIEZO1 channels, what controls the respective activation of antiatherogenic or proatherogenic pathways remains to be determined. Recently, abnormal expression of PIEZO1 was found to be implicated in EC autophagy in a mouse model of atherosclerotic plaque growth.⁸⁰ Autophagy mechanisms within the ECs have an essential role in maintaining physiological characteristics whereas defective autophagy promotes endothelial pro-

inflammatory and atherogenic phenotypes. It was suggested that PIEZO1 contributes to EC autophagy defects by promoting activation of the Yes-associated protein (YAP), a transcriptional coactivator in the Hippo pathway.⁸⁰ Therefore, targeting PIEZO1 may constitute a therapeutic approach in defective autophagy to restore endothelial function in atherosclerosis.

Endothelial PIEZO1 senses oscillating shear stress in the lymphatic system

Endothelial PIEZO1 also senses oscillating shear stress in the lymphatic system and integrates mechanical signals into a genetic program that regulates lymphatic valve development and maintenance,^{46,47} as well as lymphatic expansion in response to fluid flow.⁸¹ A recent study reported that increased intracranial pressure (ICP) and diminished cerebrospinal fluid (CSF) flow, observed in a craniosynostosis mouse model, are associated with pathological changes to meningeal lymphatic vessels (MLV) that affect their sprouting, expansion, and long-term maintenance.⁸² Remarkably, Yoda1 treatments can reduce ICP and help restore MLV functions and brain-CSF perfusion. Yoda1 treatment outcome could result from the combination of vascular PIEZO1 activation regarding ICP reduction and lymphatic PIEZO1 activation concerning meningeal lymphangiogenesis.

In humans, homozygous or compound heterozygous loss-of-function (LOF) PIEZO1 variants cause generalized lymphatic dysplasia (GLD). The severity of phenotypes associated with LOF PIEZO1 mutations in patients covers a wide range, with clinical manifestations including fetal hydrops, hydrocele, pleural effusion, varicose veins, lymphedema and/or chylothorax.⁸³⁻⁸⁵

The role of PIEZOs in the heart

PIEZO1 in cardiac fibroblasts and cardiomyocytes

The above findings clearly indicate that shear stress activation of endothelial PIEZO1 is required for the proper development of blood and lymphatic vessels.^{27,29,46,47} However, the expression of PIEZO proteins is not restricted to endothelial cells. Recent studies highlight the emerging significance of PIEZO1 function in both human and mouse cardiac fibroblasts.^{86,87} Cardiac fibroblasts play a pivotal role in preserving myocardial function and integrity of the heart tissue after injury and sense changes to the cardiac environment through mechanical cues. Altered mechanical environment of cardiac fibroblasts, secondary to fibrosis, cardiac dilatation, or hemodynamic changes in heart failure, causes fibroblast-to-myofibroblast trans-differentiation with enhanced expression of extracellular matrix (ECM)

proteins.⁸⁸ Excess of cardiac ECM increases the stiffness of the myocardium, reduces pumping capacity, and leads to cardiac remodeling.^{89,90} Yoda1 effects on cardiac fibroblasts indicated that PIEZO1 activation increases both mRNA levels and protein secretion of the pro-hypertrophic and profibrotic cytokine IL-6 through p38 mitogen-activated protein kinase downstream of Ca²⁺ entry.⁸⁷ Thus, cardiac fibroblasts express mechanically activated PIEZO1 channels coupled to paracrine secretion of IL-6, a mechanism potentially important in regulating cardiac remodeling. In the same vein, Emig et al.⁸⁶ described a role for PIEZO1 in increasing atrial fibroblast cell stiffness. Using over-expression and siRNA studies, they showed that PIEZO1 was instrumental for fibroblast adaptation to changes in matrix stiffness, and that PIEZO1-induced cell stiffening could be transmitted in a paracrine manner to neighboring (non-transfected) cells by a signaling mechanism requiring the profibrotic cytokine interleukin-6. Together, these recent studies identify PIEZO1 as a new candidate for targeted interference with cardiac fibroblast function and highlight its emerging role in pathological cardiac remodeling in vivo.

The importance of PIEZO1 in structural remodeling was initially put forward by Retailleau et al.⁹¹ while investigating the role of stretch-activated ion channels (SACs) in arterial smooth muscle cells. Remodeling of small-diameter arteries is a structural adaptation of the vessel wall to hemodynamic stimuli⁹² and is linked to cardiovascular morbidity and mortality^{93,94}. Retailleau et al.⁹¹ found that smooth muscle PIEZO1 was required for SAC channel activity and cytosolic calcium increase, and had a trophic effect on resistance arteries, influencing both diameter and wall thickness in hypertension. Because arterial remodeling is recognized as a major prognostic marker in patients at high cardiovascular disease risk, PIEZO1 might be considered as a new strategic target in the treatment of hypertensive conditions.^{93,94}

The cardiomyocytes constitute between one-third and a half of the total cardiac cell population and are responsible for the contractile forces of the heart. Although initial studies have reported relatively low level of *PIEZO1* mRNA expression in heart tissues and cardiomyocytes (see Figure 2),^{87,95} recent evidence indicates that PIEZO1 protein is expressed in the sarcolemma of adult cardiomyocytes, where it may serve as a mechano-chemo transducer activating Ca²⁺ and ROS signaling⁹⁶ or regulating eNOS expression.⁹⁷ Either cardiac-specific knockout or overexpression of PIEZO1 in mice results in defective Ca²⁺ and ROS signaling and the development of cardiomyopathy, suggesting a homeostatic role of PIEZO1 in cardiac functions.⁹⁶ Expression of PIEZO1 was found to be up-regulated by real-time PCR, Western blot and immunohistochemistry analysis in a heart failure model established by the induction of left anterior descending (LAD) coronary artery ligation in rats.⁹⁵ Expression of PIEZO1 was enhanced

by Angiotensin II (Ang II) in neonatal rat ventricular myocytes via AT1 receptor-Erk1/2 signal pathways. Consistent with this, Ang II type 1 (AT1) receptor blocker therapy (losartan treatment) *in vivo* prevented PIEZO1 protein up-regulation in failure heart,⁹⁵ indicating that AT1 receptor activation may be responsible for PIEZO1 up-regulation in cardiomyocytes during heart failure.

Consistently, PIEZO1 malfunctioning has been linked with pathological left ventricular hypertrophy (LVH) secondary to pressure overload.⁹⁸ Prior studies have identified two main stimuli for triggering LVH, the activation of the Gq-coupled AT1 receptor and mechanical forces such as pressure overload.⁹⁹ These stimuli are known to activate the hypertrophic signaling cascades, including the calcineurin-nuclear factor of activated T cells (NFAT)-GATA4 pathway and the Ca²⁺/calmodulin-dependent protein kinase II (CaMKII)-histone deacetylase 4 (HDAC4)-myocyte enhancer factor 2 (MEF2) pathway.¹⁰⁰⁻¹⁰²

An unanswered question therefore remained the identification of the molecular mechanical sensor that detects changes in mechanical load and transduces it into activation of the hypertrophic signaling cascade. PIEZO1 was recently found to be upregulated under pressure overload and enriched near T-tubule and intercalated disc of cardiomyocytes.¹⁰³ By using cardiac conditional PIEZO1 KO mice undergoing transverse aortic constriction (TAC), it was demonstrated that PIEZO1 was required for the development of cardiac hypertrophy and subsequent adverse remodeling. Mechanistically, it was proposed that PIEZO1 perturbed calcium homeostasis, mediating extracellular Ca²⁺ influx and intracellular Ca²⁺ overload, thereby increasing activation of the Ca²⁺-dependent signaling.¹⁰³ Yu et al.⁹⁸ further demonstrate that deletion of PIEZO1 in cardiomyocytes prevents activation of the CaMKII-HDAC4-MEF2 pathway in the TAC-induced pressure overload model and that this effect was associated with significant inhibition of the hypertrophic response to pressure overload (Figure 4). In addition, loss of PIEZO1 prevents the altered expression of critical calcium handling proteins previously associated with pressure overload-induced LVH, including TRPM4 and the sodium-calcium exchanger (NCX).^{104,105} Thus, the Ca²⁺-permeable PIEZO1 transduces increased myocardial forces caused by pressure overload and initiates the hypertrophic signaling cascade resulting in pathological LVH.

The role of PIEZOs in the Kidney

PIEZO1 or PIEZO2 as mechanosensors in renin-producing cells?

The renin-angiotensin-aldosterone system (RAAS) is a critical regulator of cardiac, vascular, and renal physiological functions through the regulation of vascular tone and water and salt homeostasis.^{106,107}

In addition, the RAAS has implication in pathophysiological conditions such as hypertension, heart failure and renal diseases.¹⁰⁸ Renin secretion from the juxtaglomerular apparatus is a rate-determining factor of the renin-angiotensin system, which controls blood pressure and body fluid balance.¹⁰⁷ Renin is produced and secreted by the renal juxtaglomerular (JG) cells, which are located in the media of the afferent arterioles at the entrance to the glomerulus.¹⁰⁹ Renin release from JG cells is modulated in an inverse fashion by the blood pressure inside the afferent arterioles. It is thought that perfusing pressure of the afferent arterioles stimulates the JG cells, driving calcium influx and suppressing renin secretion, whereas volume depletion relaxes the arteriole, preventing calcium influx to stimulate renin secretion.¹¹⁰⁻¹¹² Consistently, an increase in mechanical stress and calcium influx is known to inhibit forskolin-induced renin secretion in primary JG cells.¹¹³ However, the detailed mechanisms by which mechanical stress regulates the synthesis and secretion of renin remain unclear. Recent studies have provided contradictory results concerning the role of PIEZO1 and PIEZO2 in JG cells. Yang et al.¹¹⁴ showed that PIEZO1, but not PIEZO2, is functionally expressed in JG cells, activation of which increased intracellular calcium level and results in decreased levels of renin synthesis and secretion. Calcium mobilization induced by mechanical stress using microfluidics is reduced in PIEZO1-KO JG cells,¹¹⁴ yet not completely abolished, suggesting that other proteins, including TRPV4,¹¹⁵ may also contribute to mechanosensation. Mechanistically, the Prostaglandin Endoperoxide Synthase 2/Cyclooxygenase 2 PGE2 receptor 1/3 (Ptgs2 (COX-2)-PGE2-EP1/3) pathway has been proposed to mediate PIEZO1 activation-induced renin downregulation. Further *in vivo* studies in mice indicated that activation of PIEZO1 by Yoda1 downregulates renin expression and decreases the mean blood pressure level, while adenoassociated virus (AAV)-mediated PIEZO1 knockdown in the kidney abrogates the effects of Yoda1.¹¹⁴ Together, these results revealed that the activation of PIEZO1 in JG cells decreases renin expression and regulates blood pressure, highlighting its therapeutic potential as a drug target of the renin-angiotensin system.

At variance, Mochida et al.¹¹⁶ found that PIEZO2 was expressed in glomerular mesangial cells and renin-producing JG cells at both the mRNA and protein levels. Prior single-cell RNA sequencing of mouse glomerular cells showed that PIEZO2 was expressed at low levels in JG cells.¹¹⁷ In response to the reduction of mechanical load to the glomeruli by dehydration, PIEZO2 expression was found to be downregulated in mesangial cells and markedly upregulated in JG cells, along with the overproduction of renin. In addition, the expression of the renin coding gene *Ren1* was reduced by PIEZO2 knockdown in cultured juxtaglomerular As4.1 cells.¹¹⁶ These data suggest that PIEZO2 function promotes renin production. This result was unexpected given that renin expression and release from JG cells are

suppressed by Ca^{2+} influx, a phenomenon known as the calcium paradox of renin secretion.¹¹⁵ In summary, these studies suggest that PIEZO proteins play an important role in the mechanosensation of JG cells and contribute to blood pressure homeostasis by regulating renin synthesis and secretion. However, further research will be needed to clarify the specific role of PIEZO1 and PIEZO2 in these seeming contradictory results.

The role of PIEZOs in blood cells

PIEZO1 contributes to volume regulation of red blood cells

Red blood cells (RBCs) display a unique biconcave shape exposing maximal surface area for rapid O_2 and CO_2 exchanges across the capillary walls.¹¹⁸ They deform, fold, squeeze and are exposed to mechanical stresses in various levels of the circulatory system (shear stress, turbulence, contact/collision to foreign surfaces). For instance, to navigate narrow capillaries, RBCs decrease their cell volume to facilitate passage. Their deformability depends on the interplay between cytoskeletal components, integral transmembrane protein complexes, and intracellular viscosity.¹¹⁹ Defects in RBC mechanical stability can lead to RBC damage and ultimately disruption of cell membrane releasing hemoglobin (i.e., hemolysis).¹²⁰ Although PIEZO1 is present only at a few hundred copies per cell,^{121,122} it functions as a major determinant of RBC volume regulation, contributing to their mechanical stability. This role is illustrated by *PIEZO1* knock-down in zebrafish¹²³ and *PIEZO1* blood-cell specific genetic deletion in mouse, in which RBCs are overhydrated and exhibit increased fragility (Figure 5).¹²⁴ Similarly, PIEZO1 hypomorphic variants in human lead to overhydrated RBCs.¹²⁵ On the other hand, other PIEZO1 mutations in humans lead to hereditary xerocytosis, also called dehydrated hereditary stomatocytosis (DHS), a congenital hemolytic disorder characterized by dehydrated RBCs (Figure 5).¹²⁶⁻¹³¹ Functional testing of the activity of several mutant channels linked to DHS reveals that they lead to increased signal (and calcium entry) for a given stimulus compared to wild type channels. Thus, DHS results from gain-of-function (GOF) mutations in PIEZO1 channels.^{126,127} In conclusion, excess or loss of PIEZO1 activity in RBCs leads to de- or over-hydration of RBCs, respectively, highlighting the key role of PIEZO1 in maintaining RBC volume homeostasis.

Mechanistically, PIEZO1 and KCa3.1 , also known as the GARDOS channel, participate together in the volume regulation of circulating RBCs (Figure 5).¹²² In narrow capillaries and sinusoids, the increased mechanical constraint on RBCs triggers calcium entry through PIEZO1, which in turn activates the calcium dependent KCa3.1 , leading to K^+ efflux and subsequent water loss. This coupling mechanism

induces temporary decrease in cell volume to facilitate passage in microcapillaries.^{124,132} In addition to KCa3.1 channel activation, calcium mobilization caused by PIEZO1 in RBCs also contribute to shear-stress induced ATP release possibly through Pannexin 1.¹³³ Interestingly, prior studies in RBCs have linked Ca²⁺ signaling to the regulation of interaction between junctional proteins and the membrane cytoskeleton,¹³⁴ suggesting that PIEZO1 could be involved in the dynamic organization of RBCs essential for maintaining their biconcave shape and mechanics.¹³⁵ Moreover, PIEZO1 activation by Yoda1 induces RBC-NOS activation and NO production in human erythrocytes, which can mimic shear-stress induced NO production by RBCs.¹³⁶ RBC NOS has been shown to contribute to blood pressure homeostasis in mouse.¹³⁷

In addition to controlling volume and hydration homeostasis in mature RBCs, PIEZO1 is involved in erythropoiesis. Myelodysplastic features, including symptomatic anemia, have been reported in human displaying PIEZO1 mutations.¹³⁸ PIEZO1 is expressed in early progenitor cells, and its chemical activation delays erythroblastic and reticulocyte maturation.^{139,140} Of note, PIEZO1 GOF mutations linked to DHS induce maturation impairments of RBCs.^{139,140}

PIEZO1-induced RBC dehydration protects from *Plasmodium falciparum* infection

The causative parasite for malaria, *Plasmodium*, has exerted strong evolutionary pressure on the human genome by selecting polymorphisms conferring protection to the disease. Moreover, variations in RBC hydration and volume are associated with *Plasmodium falciparum* growth rate.^{141,142} A PIEZO1 GOF mutation introduced in mouse, in addition to recapitulate human hereditary xerocytosis phenotype including RBC dehydration, confers protection against experimental cerebral malaria.¹⁴³ In line with this, a comparative genomics approach led to the identification of a PIEZO1 GOF mutation, E756del, present at high incidence in African people (about one third of individuals) and associated with protection against severe malaria.^{143,144} RBCs from E756del carriers confer a protective effect *in vitro* against infection by *Plasmodium falciparum* by a mechanism that could be related to reduced infection or impaired export of virulence proteins.^{143,144} In healthy RBCs, pharmacological activation of PIEZO1 inhibits *Plasmodium falciparum* invasion likely by changing RBC shape and surface volume-ratio.^{145,146} Achieving specific PIEZO1 activation in RBCs could constitute a challenging but promising antimalarial therapeutic strategy.

PIEZO1 as carrier molecule for Er antigens blood group

Alloimmunisation refers to an immune response to foreign antigens from another human. The presence of alloantibodies may have clinical consequences for pregnant women, potentially resulting

in hemolytic disease of the fetus and newborn, and for people who need a transfusion by triggering an attack by the immune system. We are all familiar with the two main blood group systems, namely the ABO and the Rh systems. However, there are many more blood group systems (45 recognized) containing 360 red cell antigens. In a recent study, Karamatic Crew et al.¹⁴⁷ investigated individuals with alloantibodies against a collection of antigens termed Er, that were first observed more than 40-years ago,¹⁴⁸ but that were yet to be genetically characterized. Using whole exome and sanger sequencing of these individuals, they identified specific changes in the gene coding for *PIEZO1*, resulting in the production of an altered protein at the cell surface. Using *in vitro* approaches, they conclusively demonstrate that alloantibodies to Er (including two never reported) bind to *PIEZO1*, and that *PIEZO1* is required for Er antigen production. Thus, and despite its relative low abundance in RBC membranes,¹²¹ *PIEZO1* was shown to be the genetic carrier of the Er blood group system.¹⁴⁷ The discovery of the genetic basis of the Er blood group should allow to develop new tests to identify individuals with this rare blood group, with the aim of providing better care to patients.

PIEZO1 contributes to platelet aggregation

Mechanical forces play a critical role in platelet activation involved in clot formation in hemostasis and pathological thrombus formation.^{149,150} *PIEZO1* expression in platelets, as well as in a megakaryoblastic cell line, leads to shear stress induced Ca^{2+} signal.¹⁵¹ Shear stress activation of platelet *PIEZO1* contributes to collagen-induced platelet aggregation and thrombus formation *in vitro*.^{151,152} Importantly, Zainal Abidin et al.¹⁵³ show that *PIEZO1* initiates the platelet response to supraphysiological free-flow acceleration, a mechanism occurring in circulating platelets prior to platelet adhesion to subendothelial matrix exposure or artificial device surfaces. This response to extensional strain generated by flow acceleration primes platelets for immediate downstream aggregation. Activation of platelet by free-flow acceleration is mediated by Ca^{2+} transients. These Ca^{2+} signals result from sequential activation of *PIEZO1*, which senses membrane deformation and triggers downstream ATP release from PANX1, leading to autocrine activation of P2X1 channels (Figure 6).¹⁵³ Therefore, *PIEZO1* involvement in initial steps of platelet activation is of direct clinical relevance for pathological thrombosis in stenosed vessels.

PIEZO1 contributes to immune cell functions

Immune cells are exposed to various mechanical forces during their lifetime, from circulation in the lymphatic and blood systems to their trafficking in organs with various tissue stiffness. *PIEZO1* has been shown to sense pressure and shear stress in myeloid cells recruited to the lung, heart and tumors,

where its activity stimulates inflammation.¹⁵⁴⁻¹⁵⁶ Substrate stiffness-dependent modulation of PIEZO1 activity modulates cytokine-induced activation of macrophages *in vitro*.¹⁵⁷ Consistently, PIEZO1 modulates the macrophage activation in response to stiff material implants *in vivo*.¹⁵⁷ In dendritic cells, PIEZO1 also contributes to mechanical stiffness sensing supporting optimal metabolism and function.^{158,159}

Pharmacological or shear-stress activation of PIEZO1 *in vitro* also contributes to optimal activation of T cells.^{160,161} However, Jairaman et al. ¹⁶² have shown that deletion of PIEZO1 in T cells does not impact effector CD4⁺ T cell response in experimental autoimmune encephalomyelitis, an *in vivo* murine model of multiple sclerosis, although it attenuates disease severity. The PIEZO1 deletion beneficial effect on disease severity is instead mediated by selectively enhancing regulatory T cell (T_{reg}) expansion, increasing the potential of T_{reg} cells to mitigate autoimmune neuroinflammation.¹⁶²

In line with its function in immune cells, a PIEZO1 GOF mutation associated with iron overload in mouse has been shown to increase macrophage phagocytic activity. Macrophages with overactive PIEZO1 enhance erythropoiesis, increasing the production of erythropoietin that in turn downregulates hepcidin expression in hepatocytes, an hormone involved in the regulation of iron metabolism. This mechanism could contribute to the higher serum iron levels in humans with PIEZO1 GOF mutations.¹⁶³

The Role of PIEZOs in sino-aortic mechanosensory receptors

PIEZO1 and PIEZO2 channels as sensors of blood pressure

The baroreflex serves to adjust heart activity to blood pressure (BP) fluctuations. Distinct populations of stretch-sensitive myelinated vagal afferents, e.g. baroreceptors, are found in the heart and adjoining coronary and pulmonary circulations. BP pulses that occur with each heartbeat radially stretch the elastic vessel wall, which in turn activates the mechanosensory endings. Afferent neuronal signals are then transmitted to the central nervous system and inform about stretch magnitude, pulse frequency, and mean arterial pressure. Parallel central pathways are engaged that decrease sympathetic output and enhance parasympathetic output, ultimately decreasing heart rate, cardiac output, and vascular resistance (Figure 7).^{164,165} Altered baroreceptor function and sensitivity predict arrhythmias and premature death in humans after myocardial infarction or heart failure (Figure 7).¹⁶⁶

The physiological regulation of arterial BP by baroreceptors located in the ascending aorta and carotid sinuses is relatively well understood, however the molecular sensors that detect change in BP remained

unknown until recently. Recent studies in mice provided evidence for a contribution of both PIEZO1 and PIEZO2 as transducers of BP (Figure 7).⁴⁸ Conditional disruption of either PIEZO1 or PIEZO2 had no effect on blood pressure or baroreceptor reflex, but combined genetic ablation of both genes in nodose (jugular) and petrosal (glossopharyngeal) sensory ganglia abolished reflex decrease in heart rate and aortic depressor nerve responses after induced vasoconstriction.⁴⁸ Double KO mice also display labile hypertension and increased blood pressure variability.⁴⁸ In addition, Cre-guided ablation of nodose and petrosal ganglion PIEZO2 neurons eliminates the baroreceptor reflex and the aortic depressor nerve effects on blood pressure and heart rate.¹⁶⁷ Interestingly, genetic mapping reveals that PIEZO2 neurons have unique mechanosensory terminals, forming end-net endings surrounding the aortic claws, a macroscopic structure probably suited to detect arterial wall distension.¹⁶⁷ Together, these data suggest that both PIEZO1 and PIEZO2 are essential for baroreceptor function and may collaborate in the same class of sensory neuron to sense arterial stretch. However, significant concerns regarding the evidence supporting a role of PIEZOs in barosensation have been raised.¹⁶⁸ For example, the fact that inactivation of PIEZO2 gene alone had no effect when PIEZO1 is preserved,¹⁶⁸ suggests that at least some PIEZO2 neurons depend on PIEZO1 for their function. However, *PIEZO1* mRNA was rarely colocalized with *PIEZO2* in nodose and petrosal ganglion neurons.¹⁶⁸ Therefore, the exact role of PIEZO1 and the extent of interaction between PIEZO1 and PIEZO2 in baroreceptors remain unclear. Recent data also show that PIEZO2, but not PIEZO1, act as barosensor to regulate arterial BP in Wistar-Kyoto rats.¹⁶⁹ The expression of PIEZO2 was significantly downregulated in nodose ganglion neurons and aortic nerve endings in spontaneously hypertensive rats and different inducible models.¹⁶⁹ Co-immunoprecipitation experiments suggested that PIEZO2 activity was downregulated by the neural precursor cell-expressed developmentally downregulated gene 4 type 2 (*Nedd4-2*) in baroreceptor nodose neurons, causing hypertension in rats. These findings reinforce the role of PIEZO2 in baroreceptor function and its critical role in the pathogenesis of hypertension.

Besides PIEZO1 and PIEZO2, other ion channels have been proposed to contribute to the baroreflex mechanotransduction; these include the epithelial sodium channel γ subunit (γ ENaC),¹⁷⁰ acid sensing ion channel 2 (ASIC2),¹⁷¹ and the TRP channel classical subtype 5 (TRPC5).¹⁷² However, substantial residual baroreflex is still observed even though these channels are eliminated or blocked. More recently, the cation channel tentonin 3 (TTN3/TMEM150C), was shown to be expressed at the vagus afferent nerve endings innervating the aortic arch to function as a baroreceptor.¹⁷³ Genetic ablation of TTN3 induced ambient hypertension, tachycardia and impaired baroreflex sensitivity. However, the

function of TTN3 is still debated because, as for the above-cited candidate channels, it does not exhibit all the features that define a genuine mechanosensitive ion channel.⁴

Overall, these studies expand the molecular profiles of baroreceptors and provide new insights into molecular mechanisms regulating cardiovascular functions through baroreceptor function. Attenuated baroreflex sensitivity is attributed to cardiac arrhythmogenesis during heart failure. Therefore, targeting PIEZO proteins, and other sensors, pharmacologically might represent a novel strategy for activating baroreceptors and treating hypertension.

Genetic linkage to human cardiovascular diseases

The reported mutations of PIEZO genes in human diseases underline the importance of PIEZO1 in cardiovascular functions (Table I). No cardiovascular related clinical condition has been reported so far for patients carrying a PIEZO2 mutation. Of note, PIEZO mutations give rise to diseases with highly variable clinical expression, illustrated by the phenotypes of patients with DHS ranging from asymptomatic to severe with massive hemolysis. The variable expressivity of the clinical conditions could be explained by epigenetic factors or by the combination of PIEZO mutations with polymorphic variants or other disease-causing alleles.¹⁷⁴

DHS-inducing mutations that have been functionally characterized are mostly missense mutations leading to slight or moderate slowing of channel inactivation kinetics, and subsequent increased signaling for a given stimulus.^{126,128} On the other hand, mutations associated with GLD or bicuspid valve formation lead to attenuated or abolished PIEZO1 activity. These mutations lead to either truncated channels or channels from mis-spliced mRNA, or to channels that display decreased mechanical sensitivity or reduced plasma membrane trafficking due to altered N-glycosylation status.^{83,125,175} Accordingly, DHS- and LGD-linked mutations are classified into gain- and loss-of-function mutations, respectively. Interestingly, GOF and LOF mutations can lead to overlapping phenotypes, such as fetal hydrops, perinatal oedema, and lymphedema in adult for PIEZO1 or arthrogyrosis for PIEZO2 (Table I). The similar clinical features induced by *PIEZO1* mutations having opposite effects on channel functions reflect the prominent role of PIEZO1 in vascular homeostasis. Therefore, any imbalance in PIEZO1 activity and signaling could lead to overlapping phenotypes.

Some pathologies may arise not specifically from mutations in the channel but from altered gene expression. In addition to gene variants linked to diseases, increase in PIEZO1 expression has been

associated with cardiovascular diseases in humans. PIEZO1 was found to be upregulated in myofibroblasts in the fibrous cap of the plaque in patients with symptomatic carotid atherosclerotic plaques.¹⁷⁶ PIEZO1 was also upregulated in arterial smooth muscle cells in patients with idiopathic pulmonary hypertension.^{73,177,178} It remains to be established whether alteration in PIEZO1 expression is the cause or consequence of the cardiovascular diseases.

PIEZO channels as therapeutic targets?

Compelling evidence points to the importance of PIEZO channels in many aspects of cardiovascular health and disease. Better understanding of PIEZO protein biology therefore may lead to new treatments in a near future. However, this research field faces several limitations and technical obstacles. First, there is a limited number of agonists and antagonists. Except for the small-molecule, gating modifier Yoda1^{17,35} that serves as valuable tool compound both *in vitro* and *in vivo*, PIEZO2 agonists and specific PIEZO1/2 antagonists have yet to be identified. Yoda1 also has its own limitations for its use *in vivo*, due to its relatively low affinity for PIEZO1 and low water solubility. Nevertheless, the unique protein structure of PIEZO proteins should make possible to develop more specific pharmacological agents and to discover PIEZO antagonists. A key objective therefore of high-throughput screening and computational methods for effective ligand screening is to develop high-quality pharmacological tools for the development and validation of PIEZO drugs. As a positive note, homozygous *PIEZO1* disruption in humans is not lethal, suggesting that adverse drug reactions may be limited in PIEZO1-drug medication. Even with lead compounds in hands drugs often fail in later stages of development due to safety and efficacy concerns. Given the broad biological expression of PIEZOs in various tissues and cell types, a challenge will be to achieve desirable therapeutic effect while limiting unwanted effects. For example, the use of PIEZO1 as a pharmacological target in atherosclerosis and hypertension is promising but is clearly hampered by its expression in red blood cells and immune cells that could lead to serious adverse effects.¹⁵⁴ As for PIEZO2, its involvement in various somatosensory functions may also make it difficult to achieve efficient inhibition of mechanical allodynia, the most common symptom associated with neuropathic pain, while avoiding interfering with blood pressure regulation and respiration. Off-target effects of systemically administered PIEZO drugs will be a major hurdle in designing therapies with desired efficacy and acceptable toxicity. Developing targeting strategies to enable site-specific PIEZO drug delivery will be necessary to reduce off-target effects and enhance therapeutic efficacy. For example, peptide- and antibody-based targeting strategies are currently used in oncotherapy to deliver drugs to tumor cells or tissues.¹⁷⁹ Synthesizing antibody-drug

conjugates consist of the antibody, which targets to an antigen exposed at the cell surface, chemically linked to the active therapeutic agent, known as the warhead. However, this approach is currently limited to highly potent drugs, given the large size of antibodies that gives a low loading efficiency. Other alternative nanocarrier-based targeted drug delivery strategies (aptamers, small molecules, etc.) and delivery vehicles (liposomes, polymers, metal oxides, etc.) may be better suited to achieve site-specific drug delivery and thereby enhancing the drug's therapeutic efficacy.¹⁸⁰ To sum up, mouse and human data outlined above suggest that PIEZO protein targeting has the potential to produce significant therapeutic effects. However, there is still a long way to go before PIEZO proteins can be validated as drug targets for cardiovascular diseases.

Conclusion and perspective

The cardiovascular system is continuously exposed to hemodynamic forces.⁹ Cardiomyocytes are stretched as the heart fills with blood, vascular endothelial cells experience shear stress, circumferential stress, and axial stress, while baroreceptive nerve endings respond to vascular distension. Hemodynamic factors influence all forms of vascular growth, including angiogenesis, vasculogenesis and arteriogenesis. Sustained elevation of blood pressure elicits a host of mechanobiological responses by arteries that often induces phenotypic changes in the primary cells, associated with tissue remodeling. Thus, uncovering the mechanisms of cardiovascular mechanotransduction is important for understanding both the maintenance of physiology and the development of disease, as well as for providing therapeutic targets and strategies for treating cardiovascular pathologies.

Compelling evidence demonstrate the role of PIEZO channels, especially PIEZO1, in cardiovascular mechanotransduction. Cardiovascular relevance of PIEZO1 channels initially rose from studies investigating endothelial responses to shear stress,^{27,29} but widespread expression and multiple roles are now increasingly appreciated. PIEZO1 is activated by hemodynamic forces that influence vessel size and morphology, and promotes vasoactive responses. By virtue of its expression in RBCs and immune cells, PIEZO1 contributes to RBC volume regulation and immune surveillance. PIEZO2 has been proposed to contribute to the baroreflex mechanotransduction. Dysfunction or dysregulation of PIEZO1 is associated with various cardiovascular defects including hemolytic anemia, lymphedema, pulmonary hypertension, atherosclerosis, thrombus formation and ventricular hypertrophy. Thus, tremendous information has been gained from animal models and clinical studies, providing important

insight into the mechanobiological PIEZO mechanisms that control cardiovascular functions and diseases.

The ability of PIEZO channels to regulate many cellular functions lies in its capacity to activate numerous signaling pathways and to interact with many structural elements of the cytoskeleton and the plasma membrane. PIEZO channel opening leads to Ca^{2+} entry into the cell, which activates intracellular Ca^{2+} signaling pathways and regulates cellular functions depending on the cell type. In addition, PIEZO protein regulates the formation of actin-based stress fibers and has dynamic interaction with the cytoskeleton and the integrins. Some preferential coupling however is found in different cell types. PIEZO1 coupling to pannexin and ATP release has been reported in many cell types, including endothelial cells to enhance NO production,⁶⁸ lung alveolar epithelial type I cells to promote surfactant secretion,¹⁸¹ odontoblasts to participate in dentinal sensitivity,¹⁸² and cholangiocytes to contribute to bile secretion.¹⁸³ Likewise, the PIEZO1-YAP axis has recently emerged as an important pathway common to different cell types including cardiovascular cells. The YAP and TAZ transcription factors read and translate a broad range of mechanical cues into cell specific transcriptional programs.¹⁸⁴ The PIEZO1-YAP axis has a key role in cancer metastasis,^{185,186} neuronal specification in human neural stem cells,¹⁸⁷ and bone homeostasis in osteoblastic cells.¹⁸⁸ In aortic valve interstitial cells the PIEZO1-YAP axis promotes osteogenic differentiation that contributes to calcific aortic valve disease,¹⁸⁹ and mediates the endothelial atherogenic inflammatory response in endothelial cells.¹⁹⁰ Thus, the PIEZO1-YAP axis emerges as an important pathway that may contribute to cell remodeling in cardiovascular diseases.

Nevertheless, various questions need to be addressed for a better understanding of the function of PIEZO channels in cardiac functions and for improving the treatment of cardiac diseases. What is the precise subcellular localization of functional PIEZO channels in cardiovascular cells and what molecular determinants are responsible for their subcellular localization?^{57,122} Development of more specific antibodies, in addition to genetically engineered mouse models, are important requirements for these histochemical studies. How do PIEZO channels discriminate local mechanical information over bulk tension? What are the specific signaling pathways mobilized by PIEZO channel-induced calcium influx in the different cardiovascular cells? How does abnormal activation of PIEZOs mobilize pathogenic pathways in disease? Is there an interaction or compensation action between PIEZO1 and PIEZO2 in barosensation? Can the control of PIEZO2 activity in baroreceptors be considered as a therapeutic strategy to regulate hypertension? Given the broad expression and biological roles of PIEZO1 in the various cardiovascular cell types, how should PIEZO1 be specifically targeted to treat cardiovascular

diseases? Current drugs are restricted activators with poor solubility or low-affinity, and blockers with poor selectivity. Therefore, it will be helpful to identify specific activators and inhibitors of PIEZOs based on their structure, both for studying their pathophysiological role and for investigating therapeutic strategies. When targeting PIEZO1 may be used as a treatment strategy, understanding how tissue- and cell-specific factors regulate its mechanical sensitivity and gating will improve the potency of any potential treatment. Therefore, PIEZO drugs with tissue specificity, and drugs targeting PIEZO signaling pathways may provide an alternative approach for future disease treatments. Answering all these questions will provide deep understanding of cardiovascular physiology and pathology and will make PIEZO channels a novel target for treating a wide range of cardiovascular diseases.

Figure legends

Figure 1. Schematic representation of PIEZO channels in a cellular membrane

Upper panels: at rest, the blades of the homotrimeric channel display flexibility. Upon mechanical stimulation (lower panels), the increase in lateral membrane tension causes expansion of the blades, which correlates with channel activation. Adapted from Mulhall et al. ²¹.

Figure 2. Expression of *PIEZO1* and *PIEZO2* transcripts in cardiovascular-related cells in humans

PIEZO1 transcripts are detected in virtually all cell types. The lowest level is seen in cardiomyocytes. *PIEZO2* displays low expression in vascular fibroblasts and endothelial cells, and no detectable expression in other cardiovascular and blood cells. Data extracted from the Human Protein Atlas (<https://www.proteinatlas.org/>), based on meta-analysis of literature on single cell RNA sequencing and single cell databases that include healthy human tissues.¹⁹¹ nTPM: normalized transcripts per million.

Figure 3. Functions of *PIEZO1* in adult vascular endothelial cells

(A). Under physiological conditions, several signaling pathways initiated by *PIEZO1* mechanotransduction of shear stress or cyclic strain forces lead to the phosphorylation of eNOS at various positions, leading to the production of nitric oxide (NO). NO diffusion induces many physiological responses, including vascular tone relaxation and athero-protection.

(B). Under pathological conditions, abnormal activation of *PIEZO1* by high or disturbed blood flow induces $[Ca^{2+}]_i$ increase (through *PIEZO1* and synergically through PANX/P2Y2/PLC- β signaling) leading to ANXA2 dephosphorylation by PTP1B. ANXA2 binds directly to $\alpha 5$ -integrin and promotes its translocation to lipid rafts.⁷⁹ Other putative pathways downstream of PLC- β activation may contribute to integrin translocation.⁷⁷ Then, binding of fibronectin to integrin leads to FAK/NF- κ B activation and atherogenic response. Abnormal activation of *PIEZO1* is also involved in PLA2-dependent activation of TRPV4, causing sustained $[Ca^{2+}]_i$ elevation responsible for disruption of adherens junctions and actin remodeling.⁶⁵

Figure 4. *PIEZO1* activates hypertrophic signaling pathway in cardiomyocytes

Pressure overload activates *PIEZO1* in cardiomyocyte plasma membrane, increasing local $[Ca^{2+}]_i$ that in turn activates the Na^+ -permeable TRPM4 channel. The resultant increase in local $[Na^+]_i$ is expected to increase Ca^{2+} entry via the Na^+/Ca^{2+} exchanger isoform 1 (NCX1), thus amplifying calcium signal initiated by *PIEZO1*. Calmodulin may respond to this high-amplitude Ca^{2+} signal and activates the CaMKII-dependent (CaMKII-HDAC4-MEF2) hypertrophic signaling pathway. *PIEZO1* channel also converts mechanical stretch of cardiomyocytes into Ca^{2+} and ROS signaling, maintaining normal heart function.

Figure 5. *PIEZO1* regulates volume of red blood cells

Membrane stretch of RBCs in narrow capillaries activates Ca^{2+} signals through *PIEZO1*, which in turn evokes K^+ efflux through KCa3.1 and water efflux through aquaporins. This leads to volume decrease to facilitate passage. *PIEZO1* Ca^{2+} influx also potentially contributes to dynamic cytoskeletal reorganization, and ATP release through PANX1. Gain or loss of function (GOF or LOF) mutations of *PIEZO1* lead to dehydrated or overhydrated RBCs, respectively.

Figure 6. *PIEZO1* contribution to platelet activation

Extensional strain generated on circulating platelets by acceleration of blood flow, such as may occur during stenosis, leads to sequential activation of PIEZO1, PANX1 and P2X1 receptors. Ca²⁺ entry resulting from PIEZO1 activation, and subsequent P2X1 receptor stimulation induces platelet priming for downstream aggregation. This makes PIEZO1 pathways attractive targets in certain hemorrhagic or thrombotic disorders. Adapted from Schoen et al. ¹⁵⁰.

Figure 7. PIEZOs as sensors of blood pressure

(A). Schematic representation of the baroreflex. Baroreceptors are mechanosensitive nerve endings in carotid sinuses and aortic arch that exert control of mean arterial pressure. The vagus nerve and the glossopharyngeal nerve are two afferent nerves that innervate the aortic arch and carotid sinus. Baroreceptor activation generates afferent nerve impulses that are conveyed to the cardiovascular center in the pons and medulla. Stretching of the baroreceptors because of increased blood pressure causes an increase in the activity of the vagal nerve and concomitantly inhibits the sympathetic outflow, ultimately leading to decreased heart rate and blood pressure. Conversely, decreased blood pressure results in decreased signal output from the BRs, leading to decreased parasympathetic activity and disinhibition of the central sympathetic control regions.

(B). The stretch sensory nerve endings of BRs encompass a few mechanosensitive channels that can potentially respond to vascular distension (mechanoelectrical transduction). Subsequent excitation of the afferent fibers is relayed to the nucleus tractus solitarius, the primary visceral sensory relay station within the brain.

(C). The alteration in the sensitivity of the baroreceptor-heart rate reflex (baroreflex sensitivity, BRS) contributes to sympathetic–parasympathetic imbalance and is known to predict the risk of cardiovascular events. Decrease in BRS (arrow) is associated with myocardial infarction, heart failure, and hypertension.

Table I. Association of PIEZO mutations with human diseases

Gene	Impact on channel activity	Clinical conditions	Reported cardiovascular related clinical features	Selected references
PIEZO1	Gain-of-function	Autosomal dominant dehydrated hereditary stomatocytosis (OMIM 194380)	RBC dehydration Hemolytic anemia Pseudo-hyperkalemia Haemochromatosis (increased plasma iron) Fetal hydrops/perinatal oedema Lower limb lymphedema in adult	126,128-131,143,192-195
	Loss-of-function	Autosomal recessive generalized lymphatic dysplasia of Fotiou (OMIM 616843)	Asymptomatic occasional spherocytes and stomatocytes Fetal hydrops/perinatal oedema Lymphangiectasia Mild overhydration of RBCs	83,84,125
		Dominant bicuspid aortic valve disease	Mild-to-moderate aortic regurgitation	59
PIEZO2	Gain-of-function	Gordon syndrome (OMIM 114300) Distal arthrogryposis type 5 (OMIM 108145) Marden-Walker syndrome (OMIM 248700)		196,197
	Loss-of-function	Arthrogryposis, distal, with impaired proprioception and touch (OMIM 617146)		198-201

References

1. Jaalouk DE, Lammerding J. Mechanotransduction gone awry. *Nat Rev Mol Cell Biol.* 2009;10:63-73. doi: 10.1038/nrm2597
2. Califano JP, Reinhart-King CA. Exogenous and endogenous force regulation of endothelial cell behavior. *J Biomech.* 2010;43:79-86. doi: 10.1016/j.jbiomech.2009.09.012
3. Coste B, Mathur J, Schmidt M, Earley TJ, Ranade S, Petrus MJ, Dubin AE, Patapoutian A. PIEZO1 and PIEZO2 Are Essential Components of Distinct Mechanically Activated Cation Channels. *Science.* 2010;330:55-60. doi: 10.1126/science.1193270
4. Delmas P, Parpaite T, Coste B. PIEZO channels and newcomers in the mammalian mechanosensitive ion channel family. *Neuron.* 2022;110:2713-2727. doi: 10.1016/j.neuron.2022.07.001
5. Syeda R. Physiology and Pathophysiology of Mechanically Activated PIEZO Channels. *Annu Rev Neurosci.* 2021;44:383-402. doi: 10.1146/annurev-neuro-093020-120939
6. Kefauver JM, Ward AB, Patapoutian A. Discoveries in structure and physiology of mechanically activated ion channels. *Nature.* 2020;587:567-576. doi: 10.1038/s41586-020-2933-1
7. Douguet D, Patel A, Xu A, Vanhoutte PM, Honore E. PIEZO Ion Channels in Cardiovascular Mechanobiology. *Trends Pharmacol Sci.* 2019;40:956-970. doi: 10.1016/j.tips.2019.10.002
8. Beech DJ, Kalli AC. Force Sensing by PIEZO Channels in Cardiovascular Health and Disease. *Arterioscler Thromb Vasc Biol.* 2019;39:2228-2239. doi: 10.1161/ATVBAHA.119.313348
9. Davis MJ, Earley S, Li YS, Chien S. Vascular mechanotransduction. *Physiol Rev.* 2023;103:1247-1421. doi: 10.1152/physrev.00053.2021
10. Murthy SE, Dubin AE, Patapoutian A. PIEZOs thrive under pressure: mechanically activated ion channels in health and disease. *Nat Rev Mol Cell Biol.* 2017;18:771-783. doi: 10.1038/nrm.2017.92
11. Young M, Lewis AH, Grandl J. Physics of mechanotransduction by PIEZO ion channels. *The Journal of general physiology.* 2022;154. doi: 10.1085/jgp.202113044
12. Ge J, Li W, Zhao Q, Li N, Chen M, Zhi P, Li R, Gao N, Xiao B, Yang M. Architecture of the mammalian mechanosensitive PIEZO1 channel. *Nature.* 2015;527:64-69. doi: 10.1038/nature15247
13. Guo YR, MacKinnon R. Structure-based membrane dome mechanism for PIEZO mechanosensitivity. *Elife.* 2017;6. doi: 10.7554/eLife.33660
14. Saotome K, Murthy SE, Kefauver JM, Whitwam T, Patapoutian A, Ward AB. Structure of the mechanically activated ion channel PIEZO1. *Nature.* 2017. doi: 10.1038/nature25453
15. Lin YC, Guo YR, Miyagi A, Levring J, MacKinnon R, Scheuring S. Force-induced conformational changes in PIEZO1. *Nature.* 2019;573:230-234. doi: 10.1038/s41586-019-1499-2
16. Wang L, Zhou H, Zhang M, Liu W, Deng T, Zhao Q, Li Y, Lei J, Li X, Xiao B. Structure and mechanogating of the mammalian tactile channel PIEZO2. *Nature.* 2019;573:225-229. doi: 10.1038/s41586-019-1505-8
17. Syeda R, Florendo MN, Cox CD, Kefauver JM, Santos JS, Martinac B, Patapoutian A. PIEZO1 Channels Are Inherently Mechanosensitive. *Cell Rep.* 2016;17:1739-1746. doi: S2211-1247(16)31438-3 [pii]
18. Nosyreva ED, Thompson D, Syeda R. Identification and functional characterization of the PIEZO1 channel pore domain. *J Biol Chem.* 2021;296:100225. doi: 10.1074/jbc.RA120.015905
19. Zhao Q, Zhou H, Chi S, Wang Y, Wang J, Geng J, Wu K, Liu W, Zhang T, Dong MQ, et al. Structure and mechanogating mechanism of the PIEZO1 channel. *Nature.* 2018;554:487-492. doi: 10.1038/nature25743

20. Yang X, Lin C, Chen X, Li S, Li X, Xiao B. Structure deformation and curvature sensing of PIEZO1 in lipid membranes. *Nature*. 2022;604:377-383. doi: 10.1038/s41586-022-04574-8
21. Mulhall EM, Gharpure A, Lee RM, Dubin AE, Aaron JS, Marshall KL, Spencer KR, Reiche MA, Henderson SC, Chew TL, et al. Direct observation of the conformational states of PIEZO1. *Nature*. 2023. doi: 10.1038/s41586-023-06427-4
22. Lewis AH, Grandl J. Inactivation Kinetics and Mechanical Gating of PIEZO1 Ion Channels Depend on Subdomains within the Cap. *Cell Rep*. 2020;30:870-880 e872. doi: 10.1016/j.celrep.2019.12.040
23. Cox CD, Bae C, Ziegler L, Hartley S, Nikolova-Krstevski V, Rohde PR, Ng CA, Sachs F, Gottlieb PA, Martinac B. Removal of the mechanoprotective influence of the cytoskeleton reveals PIEZO1 is gated by bilayer tension. *Nat Commun*. 2016;7:10366. doi: 10.1038/ncomms10366
24. Hoffman BU, Baba Y, Lee SA, Tong CK, Konofagou EE, Lumpkin EA. Focused ultrasound excites action potentials in mammalian peripheral neurons in part through the mechanically gated ion channel PIEZO2. *Proc Natl Acad Sci U S A*. 2022;119:e2115821119. doi: 10.1073/pnas.2115821119
25. Lewis AH, Grandl J. Mechanical sensitivity of PIEZO1 ion channels can be tuned by cellular membrane tension. *Elife*. 2015;4. doi: 10.7554/eLife.12088
26. Lee W, Leddy HA, Chen Y, Lee SH, Zelenski NA, McNulty AL, Wu J, Beicker KN, Coles J, Zauscher S, et al. Synergy between PIEZO1 and PIEZO2 channels confers high-strain mechanosensitivity to articular cartilage. *Proc Natl Acad Sci U S A*. 2014;111:E5114-5122. doi: 10.1073/pnas.1414298111
27. Li J, Hou B, Tumova S, Muraki K, Bruns A, Ludlow MJ, Sedo A, Hyman AJ, McKeown L, Young RS, et al. PIEZO1 integration of vascular architecture with physiological force. *Nature*. 2014. doi: 10.1038/nature13701
28. Qiu Z, Guo J, Kala S, Zhu J, Xian Q, Qiu W, Li G, Zhu T, Meng L, Zhang R, et al. The Mechanosensitive Ion Channel PIEZO1 Significantly Mediates In Vitro Ultrasonic Stimulation of Neurons. *iScience*. 2019;21:448-457. doi: 10.1016/j.isci.2019.10.037
29. Ranade SS, Qiu Z, Woo SH, Hur SS, Murthy SE, Cahalan SM, Xu J, Mathur J, Bandell M, Coste B, et al. PIEZO1, a mechanically activated ion channel, is required for vascular development in mice. *Proc Natl Acad Sci U S A*. 2014;111:10347-10352. doi: 10.1073/pnas.1409233111
30. Wu J, Young M, Lewis AH, Martfeld AN, Kalmeta B, Grandl J. Inactivation of Mechanically Activated PIEZO1 Ion Channels Is Determined by the C-Terminal Extracellular Domain and the Inner Pore Helix. *Cell Rep*. 2017;21:2357-2366. doi: 10.1016/j.celrep.2017.10.120
31. Del Marmol JI, Touhara KK, Croft G, MacKinnon R. PIEZO1 forms a slowly-inactivating mechanosensory channel in mouse embryonic stem cells. *Elife*. 2018;7. doi: 10.7554/eLife.33149
32. Zhou Z, Ma X, Lin Y, Cheng D, Bavi N, Secker GA, Li JV, Janbandhu V, Sutton DL, Scott HS, et al. MyoD-family inhibitor proteins act as auxiliary subunits of PIEZO channels. *Science*. 2023;381:799-804. doi: 10.1126/science.adh8190
33. Wang H, Yuan Z, Wang B, Li B, Lv H, He J, Huang Y, Cui Z, Ma Q, Li T, et al. COMP (Cartilage Oligomeric Matrix Protein), a Novel PIEZO1 Regulator That Controls Blood Pressure. *Hypertension*. 2022;79:549-561. doi: 10.1161/HYPERTENSIONAHA.121.17972
34. Wang J, Jiang J, Yang X, Zhou G, Wang L, Xiao B. Tethering PIEZO channels to the actin cytoskeleton for mechanogating via the cadherin-beta-catenin mechanotransduction complex. *Cell Rep*. 2022;38:110342. doi: 10.1016/j.celrep.2022.110342
35. Syeda R, Xu J, Dubin AE, Coste B, Mathur J, Huynh T, Matzen J, Lao JM, Tully DC, Engels IH, et al. Chemical activation of the mechanotransduction channel PIEZO1. *Elife*. 2015;4. doi: 10.7554/eLife.07369

36. Botello-Smith WM, Jiang W, Zhang H, Ozkan AD, Lin YC, Pham CN, Lacroix JJ, Luo Y. A mechanism for the activation of the mechanosensitive PIEZO1 channel by the small molecule Yoda1. *Nat Commun.* 2019;10:4503. doi: 10.1038/s41467-019-12501-1
37. Wijerathne TD, Ozkan AD, Lacroix JJ. Yoda1's energetic footprint on PIEZO1 channels and its modulation by voltage and temperature. *Proc Natl Acad Sci U S A.* 2022;119:e2202269119. doi: 10.1073/pnas.2202269119
38. Parsonage G, Cuthbertson K, Endesh N, Murciano N, Hyman AJ, Revill CH, Povstyan OV, Chuntharpursat-Bon E, Debant M, Ludlow MJ, et al. Improved PIEZO1 agonism through 4-benzoic acid modification of Yoda1. *British journal of pharmacology.* 2023;180:2039-2063. doi: 10.1111/bph.15996
39. Evans EL, Cuthbertson K, Endesh N, Rode B, Blythe NM, Hyman AJ, Hall SJ, Gaunt HJ, Ludlow MJ, Foster R, et al. Yoda1 analogue (Dooku1) which antagonizes Yoda1-evoked activation of PIEZO1 and aortic relaxation. *British journal of pharmacology.* 2018;175:1744-1759. doi: 10.1111/bph.14188
40. Wang Y, Chi S, Guo H, Li G, Wang L, Zhao Q, Rao Y, Zu L, He W, Xiao B. A lever-like transduction pathway for long-distance chemical- and mechano-gating of the mechanosensitive PIEZO1 channel. *Nat Commun.* 2018;9:1300. doi: 10.1038/s41467-018-03570-9
41. Bae C, Sachs F, Gottlieb PA. The mechanosensitive ion channel PIEZO1 is inhibited by the peptide GsMTx4. *Biochemistry.* 2011;50:6295-6300. doi: 10.1021/bi200770q
42. Gnanasambandam R, Ghatak C, Yasman A, Nishizawa K, Sachs F, Ladokhin AS, Sukharev SI, Suchyna TM. GsMTx4: Mechanism of Inhibiting Mechanosensitive Ion Channels. *Biophys J.* 2017;112:31-45. doi: 10.1016/j.bpj.2016.11.013
43. Ranade SS, Woo SH, Dubin AE, Moshourab RA, Wetzel C, Petrus M, Mathur J, Begay V, Coste B, Mainquist J, et al. PIEZO2 is the major transducer of mechanical forces for touch sensation in mice. *Nature.* 2014;516:121-U330. doi: 10.1038/nature13980
44. Woo SH, Lukacs V, de Nooij JC, Zaytseva D, Criddle CR, Francisco A, Jessell TM, Wilkinson KA, Patapoutian A. PIEZO2 is the principal mechanotransduction channel for proprioception. *Nat Neurosci.* 2015;18:1756-1762. doi: 10.1038/nn.4162
45. Woo SH, Ranade S, Weyer AD, Dubin AE, Baba Y, Qiu Z, Petrus M, Miyamoto T, Reddy K, Lumpkin EA, et al. PIEZO2 is required for Merkel-cell mechanotransduction. *Nature.* 2014. doi: 10.1038/nature13251
46. Choi D, Park E, Jung E, Cha B, Lee S, Yu J, Kim PM, Lee S, Hong YJ, Koh CJ, et al. PIEZO1 incorporates mechanical force signals into the genetic program that governs lymphatic valve development and maintenance. *JCI Insight.* 2019;4. doi: 10.1172/jci.insight.125068
47. Nonomura K, Lukacs V, Sweet DT, Goddard LM, Kanie A, Whitwam T, Ranade SS, Fujimori T, Kahn ML, Patapoutian A. Mechanically activated ion channel PIEZO1 is required for lymphatic valve formation. *Proc Natl Acad Sci U S A.* 2018;115:12817-12822. doi: 10.1073/pnas.1817070115
48. Zeng WZ, Marshall KL, Min S, Daou I, Chappleau MW, Abboud FM, Liberles SD, Patapoutian A. PIEZO2 mediates neuronal sensing of blood pressure and the baroreceptor reflex. *Science.* 2018;362:464-467. doi: 10.1126/science.aau6324
49. Bainbridge FA. The influence of venous filling upon the rate of the heart. *The Journal of physiology.* 1915;50:65-84. doi: 10.1113/jphysiol.1915.sp001736
50. Wegler C, Olander M, Wisniewski JR, Lundquist P, Zettl K, Asberg A, Hjelmessaeth J, Andersson TB, Artursson P. Global variability analysis of mRNA and protein concentrations across and within human tissues. *NAR Genom Bioinform.* 2020;2:lqz010. doi: 10.1093/nargab/lqz010
51. Kruger-Genge A, Blocki A, Franke RP, Jung F. Vascular Endothelial Cell Biology: An Update. *Int J Mol Sci.* 2019;20. doi: 10.3390/ijms20184411

52. Davies PF. Flow-mediated endothelial mechanotransduction. *Physiol Rev.* 1995;75:519-560. doi: 10.1152/physrev.1995.75.3.519
53. Cunningham KS, Gotlieb AI. The role of shear stress in the pathogenesis of atherosclerosis. *Lab Invest.* 2005;85:9-23. doi: 10.1038/labinvest.3700215
54. Baeyens N. Fluid shear stress sensing in vascular homeostasis and remodeling: Towards the development of innovative pharmacological approaches to treat vascular dysfunction. *Biochem Pharmacol.* 2018;158:185-191. doi: 10.1016/j.bcp.2018.10.023
55. Ando J, Yamamoto K. Effects of shear stress and stretch on endothelial function. *Antioxid Redox Signal.* 2011;15:1389-1403. doi: 10.1089/ars.2010.3361
56. He L, Zhang CL, Chen Q, Wang L, Huang Y. Endothelial shear stress signal transduction and atherogenesis: From mechanisms to therapeutics. *Pharmacol Ther.* 2022;235:108152. doi: 10.1016/j.pharmthera.2022.108152
57. Chuntharpursat-Bon E, Povstyan OV, Ludlow MJ, Carrier DJ, Debant M, Shi J, Gaunt HJ, Bauer CC, Curd A, Simon Futers T, et al. PIEZO1 and PECAM1 interact at cell-cell junctions and partner in endothelial force sensing. *Commun Biol.* 2023;6:358. doi: 10.1038/s42003-023-04706-4
58. Duchemin AL, Vignes H, Vermot J. Mechanically activated PIEZO channels modulate outflow tract valve development through the Yap1 and Klf2-Notch signaling axis. *Elife.* 2019;8. doi: 10.7554/eLife.44706
59. Faucherre A, Moha Ou Maati H, Nasr N, Pinard A, Theron A, Odelin G, Desvignes JP, Salgado D, Collod-Beroud G, Avierinos JF, et al. PIEZO1 is required for outflow tract and aortic valve development. *J Mol Cell Cardiol.* 2020;143:51-62. doi: 10.1016/j.yjmcc.2020.03.013
60. Przysinda A, Feng W, Li G. Diversity of Organism-Wide and Organ-Specific Endothelial Cells. *Curr Cardiol Rep.* 2020;22:19. doi: 10.1007/s11886-020-1275-9
61. Rode B, Shi J, Endesh N, Drinkhill MJ, Webster PJ, Lotteau SJ, Bailey MA, Yuldasheva NY, Ludlow MJ, Cubbon RM, et al. PIEZO1 channels sense whole body physical activity to reset cardiovascular homeostasis and enhance performance. *Nat Commun.* 2017;8:350. doi: 10.1038/s41467-017-00429-3
62. Morley LC, Shi J, Gaunt HJ, Hyman AJ, Webster PJ, Williams C, Forbes K, Walker JJ, Simpson NAB, Beech DJ. PIEZO1 channels are mechanosensors in human fetoplacental endothelial cells. *Mol Hum Reprod.* 2018;24:510-520. doi: 10.1093/molehr/gay033
63. Wang S, Wang B, Shi Y, Moller T, Stegmeyer RI, Strilic B, Li T, Yuan Z, Wang C, Wettschureck N, et al. Mechanosensation by endothelial PIEZO1 is required for leukocyte diapedesis. *Blood.* 2022;140:171-183. doi: 10.1182/blood.2021014614
64. Friedrich EE, Hong Z, Xiong S, Zhong M, Di A, Rehman J, Komarova YA, Malik AB. Endothelial cell PIEZO1 mediates pressure-induced lung vascular hyperpermeability via disruption of adherens junctions. *Proc Natl Acad Sci U S A.* 2019;116:12980-12985. doi: 10.1073/pnas.1902165116
65. Swain SM, Liddle RA. PIEZO1 acts upstream of TRPV4 to induce pathological changes in endothelial cells due to shear stress. *J Biol Chem.* 2021;296:100171. doi: 10.1074/jbc.RA120.015059
66. Endesh N, Chuntharpursat-Bon E, Revill C, Yuldasheva NY, Futers TS, Parsonage G, Humphreys N, Adamson A, Morley LC, Cubbon RM, et al. Independent endothelial functions of PIEZO1 and TRPV4 in hepatic portal vein and predominance of PIEZO1 in mechanical and osmotic stress. *Liver Int.* 2023. doi: 10.1111/liv.15646
67. Vanhoutte PM, Zhao Y, Xu A, Leung SW. Thirty Years of Saying NO: Sources, Fate, Actions, and Misfortunes of the Endothelium-Derived Vasodilator Mediator. *Circ Res.* 2016;119:375-396. doi: 10.1161/CIRCRESAHA.116.306531

68. Wang S, Chennupati R, Kaur H, Iring A, Wettschureck N, Offermanns S. Endothelial cation channel PIEZO1 controls blood pressure by mediating flow-induced ATP release. *J Clin Invest.* 2016;126:4527-4536. doi: 10.1172/JCI87343
69. Jin YJ, Chennupati R, Li R, Liang G, Wang S, Iring A, Graumann J, Wettschureck N, Offermanns S. Protein kinase N2 mediates flow-induced endothelial NOS activation and vascular tone regulation. *J Clin Invest.* 2021;131. doi: 10.1172/JCI145734
70. Iring A, Jin YJ, Albarran-Juarez J, Siragusa M, Wang S, Dancs PT, Nakayama A, Tonack S, Chen M, Kunne C, et al. Shear stress-induced endothelial adrenomedullin signaling regulates vascular tone and blood pressure. *J Clin Invest.* 2019;129:2775-2791. doi: 10.1172/JCI123825
71. Siragusa M, Oliveira Justo AF, Malacarne PF, Strano A, Buch A, Withers B, Peters KG, Fleming I. VE-PTP inhibition elicits eNOS phosphorylation to blunt endothelial dysfunction and hypertension in diabetes. *Cardiovasc Res.* 2021;117:1546-1556. doi: 10.1093/cvr/cvaa213
72. Bartoli F, Debant M, Chuntharpursat-Bon E, Evans EL, Musialowski KE, Parsonage G, Morley LC, Futers TS, Sukumar P, Bowen TS, et al. Endothelial PIEZO1 sustains muscle capillary density and contributes to physical activity. *J Clin Invest.* 2022;132. doi: 10.1172/JCI141775
73. Wang Z, Chen J, Babicheva A, Jain PP, Rodriguez M, Ayon RJ, Ravellette KS, Wu L, Balistrieri F, Tang H, et al. Endothelial upregulation of mechanosensitive channel PIEZO1 in pulmonary hypertension. *Am J Physiol Cell Physiol.* 2021;321:C1010-C1027. doi: 10.1152/ajpcell.00147.2021
74. Liu Z, Tong T, Sun J, Wu W, Zhang J, Cui Z, Han M. PIEZO1 in endothelial cells is involved in vitamin D-induced vascular calcification. *Biochem Biophys Res Commun.* 2023;638:140-146. doi: 10.1016/j.bbrc.2022.11.060
75. Fei L, Xu M, Wang H, Zhong C, Jiang S, Lichtenberger FB, Erdogan C, Wang H, Bonk JS, Lai E, et al. PIEZO1 Mediates Vasodilation Induced by Acute Hyperglycemia in Mouse Renal Arteries and Microvessels. *Hypertension.* 2023. doi: 10.1161/HYPERTENSIONAHA.122.20767
76. Porto Ribeiro T, Barbeau S, Baudrimont I, Vacher P, Freund-Michel V, Cardouat G, Berger P, Guibert C, Ducret T, Quignard JF. PIEZO1 Channel Activation Reverses Pulmonary Artery Vasoconstriction in an Early Rat Model of Pulmonary Hypertension: The Role of Ca(2+) Influx and Akt-eNOS Pathway. *Cells.* 2022;11. doi: 10.3390/cells11152349
77. Albarran-Juarez J, Iring A, Wang S, Joseph S, Grimm M, Strilic B, Wettschureck N, Althoff TF, Offermanns S. PIEZO1 and G(q)/G(11) promote endothelial inflammation depending on flow pattern and integrin activation. *J Exp Med.* 2018;215:2655-2672. doi: 10.1084/jem.20180483
78. Chiu JJ, Chien S. Effects of disturbed flow on vascular endothelium: pathophysiological basis and clinical perspectives. *Physiol Rev.* 2011;91:327-387. doi: 10.1152/physrev.00047.2009
79. Zhang C, Zhou T, Chen Z, Yan M, Li B, Lv H, Wang C, Xiang S, Shi L, Zhu Y, et al. Coupling of Integrin alpha5 to Annexin A2 by Flow Drives Endothelial Activation. *Circ Res.* 2020;127:1074-1090. doi: 10.1161/CIRCRESAHA.120.316857
80. Mao J, Yang R, Yuan P, Wu F, Wei Y, Nie Y, Zhang C, Zhou X. Different stimuli induce endothelial dysfunction and promote atherosclerosis through the PIEZO1/YAP signaling axis. *Arch Biochem Biophys.* 2023;747:109755. doi: 10.1016/j.abb.2023.109755
81. Choi D, Park E, Yu RP, Cooper MN, Cho IT, Choi J, Yu J, Zhao L, Yum JI, Yu JS, et al. PIEZO1-Regulated Mechanotransduction Controls Flow-Activated Lymphatic Expansion. *Circ Res.* 2022;131:e2-e21. doi: 10.1161/CIRCRESAHA.121.320565
82. Matrongolo MJ, Ang PS, Wu J, Jain A, Thackray JK, Reddy AG, Sung CC, Barbet G, Hong YK, Tischfield MA. PIEZO1 agonist restores meningeal lymphatic vessels, drainage, and brain-CSF perfusion in craniosynostosis and aged mice. *J Clin Invest.* 2023. doi: 10.1172/JCI171468
83. Lukacs V, Mathur J, Mao R, Bayrak-Toydemir P, Procter M, Cahalan SM, Kim HJ, Bandell M, Longo N, Day RW, et al. Impaired PIEZO1 function in patients with a novel autosomal

- recessive congenital lymphatic dysplasia. *Nat Commun.* 2015;6:8329. doi: 10.1038/ncomms9329
84. Fotiou E, Martin-Almedina S, Simpson MA, Lin S, Gordon K, Brice G, Atton G, Jeffery I, Rees DC, Mignot C, et al. Novel mutations in PIEZO1 cause an autosomal recessive generalized lymphatic dysplasia with non-immune hydrops fetalis. *Nat Commun.* 2015;6:8085. doi: 10.1038/ncomms9085
 85. Datkhaeva I, Arboleda VA, Senaratne TN, Nikpour G, Meyerson C, Geng Y, Afshar Y, Scibetta E, Goldstein J, Quintero-Rivera F, et al. Identification of novel PIEZO1 variants using prenatal exome sequencing and correlation to ultrasound and autopsy findings of recurrent hydrops fetalis. *Am J Med Genet A.* 2018;176:2829-2834. doi: 10.1002/ajmg.a.40533
 86. Emig R, Knodt W, Krussig MJ, Zgierski-Johnston CM, Gorka O, Gross O, Kohl P, Ravens U, Peyronnet R. PIEZO1 Channels Contribute to the Regulation of Human Atrial Fibroblast Mechanical Properties and Matrix Stiffness Sensing. *Cells.* 2021;10. doi: 10.3390/cells10030663
 87. Blythe NM, Muraki K, Ludlow MJ, Stylianidis V, Gilbert HTJ, Evans EL, Cuthbertson K, Foster R, Swift J, Li J, et al. Mechanically activated PIEZO1 channels of cardiac fibroblasts stimulate p38 mitogen-activated protein kinase activity and interleukin-6 secretion. *J Biol Chem.* 2019;294:17395-17408. doi: 10.1074/jbc.RA119.009167
 88. Herum KM, Choppe J, Kumar A, Engler AJ, McCulloch AD. Mechanical regulation of cardiac fibroblast profibrotic phenotypes. *Mol Biol Cell.* 2017;28:1871-1882. doi: 10.1091/mbc.E17-01-0014
 89. Fan D, Takawale A, Lee J, Kassiri Z. Cardiac fibroblasts, fibrosis and extracellular matrix remodeling in heart disease. *Fibrogenesis Tissue Repair.* 2012;5:15. doi: 10.1186/1755-1536-5-15
 90. Saucerman JJ, Tan PM, Buchholz KS, McCulloch AD, Omens JH. Mechanical regulation of gene expression in cardiac myocytes and fibroblasts. *Nat Rev Cardiol.* 2019;16:361-378. doi: 10.1038/s41569-019-0155-8
 91. Retailleau K, Duprat F, Arhatte M, Ranade SS, Peyronnet R, Martins JR, Jodar M, Moro C, Offermanns S, Feng Y, et al. PIEZO1 in Smooth Muscle Cells Is Involved in Hypertension-Dependent Arterial Remodeling. *Cell Rep.* 2015;13:1161-1171. doi: 10.1016/j.celrep.2015.09.072
 92. Bakker EN, Pisteia A, VanBavel E. Transglutaminases in vascular biology: relevance for vascular remodeling and atherosclerosis. *J Vasc Res.* 2008;45:271-278. doi: 10.1159/000113599
 93. Mathiassen ON, Buus NH, Sihm I, Thybo NK, Morn B, Schroeder AP, Thygesen K, Aalkjaer C, Lederballe O, Mulvany MJ, et al. Small artery structure is an independent predictor of cardiovascular events in essential hypertension. *J Hypertens.* 2007;25:1021-1026. doi: 10.1097/HJH.0b013e32805bf8ed
 94. Rizzoni D, Porteri E, Boari GE, De Ciuceis C, Sleiman I, Muiesan ML, Castellano M, Miclini M, Agabiti-Rosei E. Prognostic significance of small-artery structure in hypertension. *Circulation.* 2003;108:2230-2235. doi: 10.1161/01.CIR.0000095031.51492.C5
 95. Liang J, Huang B, Yuan G, Chen Y, Liang F, Zeng H, Zheng S, Cao L, Geng D, Zhou S. Stretch-activated channel PIEZO1 is up-regulated in failure heart and cardiomyocyte stimulated by AngII. *Am J Transl Res.* 2017;9:2945-2955.
 96. Jiang F, Yin K, Wu K, Zhang M, Wang S, Cheng H, Zhou Z, Xiao B. The mechanosensitive PIEZO1 channel mediates heart mechano-chemo transduction. *Nat Commun.* 2021;12:869. doi: 10.1038/s41467-021-21178-4
 97. Wong TY, Juang WC, Tsai CT, Tseng CJ, Lee WH, Chang SN, Cheng PW. Mechanical Stretching Simulates Cardiac Physiology and Pathology through Mechanosensor PIEZO1. *J Clin Med.* 2018;7. doi: 10.3390/jcm7110410

98. Yu Z-Y, Gong H, Kesteven S, Guo Y, Wu J, Li JV, Cheng D, Zhou Z, Iismaa SE, Kaidonis X, et al. PIEZO1 is the cardiac mechanosensor that initiates the cardiomyocyte hypertrophic response to pressure overload in adult mice. *Nature Cardiovascular Research*. 2022;1:577-591. doi: 10.1038/s44161-022-00082-0
99. Nakamura M, Sadoshima J. Mechanisms of physiological and pathological cardiac hypertrophy. *Nat Rev Cardiol*. 2018;15:387-407. doi: 10.1038/s41569-018-0007-y
100. Anderson ME, Brown JH, Bers DM. CaMKII in myocardial hypertrophy and heart failure. *J Mol Cell Cardiol*. 2011;51:468-473. doi: 10.1016/j.yjmcc.2011.01.012
101. Backs J, Song K, Bezprozvannaya S, Chang S, Olson EN. CaM kinase II selectively signals to histone deacetylase 4 during cardiomyocyte hypertrophy. *J Clin Invest*. 2006;116:1853-1864. doi: 10.1172/JCI27438
102. Wu X, Zhang T, Bossuyt J, Li X, McKinsey TA, Dedman JR, Olson EN, Chen J, Brown JH, Bers DM. Local InsP3-dependent perinuclear Ca²⁺ signaling in cardiac myocyte excitation-transcription coupling. *J Clin Invest*. 2006;116:675-682. doi: 10.1172/JCI27374
103. Zhang Y, Su SA, Li W, Ma Y, Shen J, Wang Y, Shen Y, Chen J, Ji Y, Xie Y, et al. PIEZO1-Mediated Mechanotransduction Promotes Cardiac Hypertrophy by Impairing Calcium Homeostasis to Activate Calpain/Calcineurin Signaling. *Hypertension*. 2021;78:647-660. doi: 10.1161/HYPERTENSIONAHA.121.17177
104. Guo Y, Yu ZY, Wu J, Gong H, Kesteven S, Iismaa SE, Chan AY, Holman S, Pinto S, Pironet A, et al. The Ca²⁺-activated cation channel TRPM4 is a positive regulator of pressure overload-induced cardiac hypertrophy. *Elife*. 2021;10. doi: 10.7554/eLife.66582
105. Nie J, Duan Q, He M, Li X, Wang B, Zhou C, Wu L, Wen Z, Chen C, Wang DW, et al. Ranolazine prevents pressure overload-induced cardiac hypertrophy and heart failure by restoring aberrant Na⁺ and Ca²⁺ handling. *J Cell Physiol*. 2019;234:11587-11601. doi: 10.1002/jcp.27791
106. Wu CH, Mohammadmoradi S, Chen JZ, Sawada H, Daugherty A, Lu HS. Renin-Angiotensin System and Cardiovascular Functions. *Arterioscler Thromb Vasc Biol*. 2018;38:e108-e116. doi: 10.1161/ATVBAHA.118.311282
107. Gomez RA, Sequeira-Lopez MLS. Renin cells in homeostasis, regeneration and immune defence mechanisms. *Nat Rev Nephrol*. 2018;14:231-245. doi: 10.1038/nrneph.2017.186
108. Atlas SA. The renin-angiotensin aldosterone system: pathophysiological role and pharmacologic inhibition. *J Manag Care Pharm*. 2007;13:9-20. doi: 10.18553/jmcp.2007.13.s8-b.9
109. Persson PB. Renin: origin, secretion and synthesis. *The Journal of physiology*. 2003;552:667-671. doi: 10.1113/jphysiol.2003.049890
110. Rettig R, Ganten D, Lang RE, Unger T. The renin-angiotensin system in the central control of blood pressure. *Eur Heart J*. 1987;8 Suppl B:129-132. doi: 10.1093/eurheartj/8.suppl_b.129
111. Guessoum O, de Goes Martini A, Sequeira-Lopez MLS, Gomez RA. Deciphering the Identity of Renin Cells in Health and Disease. *Trends Mol Med*. 2021;27:280-292. doi: 10.1016/j.molmed.2020.10.003
112. Beierwaltes WH. The role of calcium in the regulation of renin secretion. *Am J Physiol Renal Physiol*. 2010;298:F1-F11. doi: 10.1152/ajprenal.00143.2009
113. Carey RM, McGrath HE, Pentz ES, Gomez RA, Barrett PQ. Biomechanical coupling in renin-releasing cells. *J Clin Invest*. 1997;100:1566-1574. doi: 10.1172/JCI119680
114. Yang X, Zeng H, Wang L, Luo S, Zhou Y. Activation of PIEZO1 downregulates renin in juxtaglomerular cells and contributes to blood pressure homeostasis. *Cell Biosci*. 2022;12:197. doi: 10.1186/s13578-022-00931-2

115. Seghers F, Yerna X, Zanou N, Devuyst O, Vennekens R, Nilius B, Gailly P. TRPV4 participates in pressure-induced inhibition of renin secretion by juxtaglomerular cells. *The Journal of physiology*. 2016;594:7327-7340. doi: 10.1113/JP273595
116. Mochida Y, Ochiai K, Nagase T, Nonomura K, Akimoto Y, Fukuhara H, Sakai T, Matsumura G, Yamaguchi Y, Nagase M. PIEZO2 expression and its alteration by mechanical forces in mouse mesangial cells and renin-producing cells. *Sci Rep*. 2022;12:4197. doi: 10.1038/s41598-022-07987-7
117. He B, Chen P, Zambrano S, Dabaghie D, Hu Y, Moller-Hackbarth K, Unnersjo-Jess D, Korkut GG, Charrin E, Jeansson M, et al. Single-cell RNA sequencing reveals the mesangial identity and species diversity of glomerular cell transcriptomes. *Nat Commun*. 2021;12:2141. doi: 10.1038/s41467-021-22331-9
118. Lew VL, Tiffert T. On the Mechanism of Human Red Blood Cell Longevity: Roles of Calcium, the Sodium Pump, PIEZO1, and Gardos Channels. *Front Physiol*. 2017;8:977. doi: 10.3389/fphys.2017.00977
119. Huisjes R, Bogdanova A, van Solinge WW, Schiffelers RM, Kaestner L, van Wijk R. Squeezing for Life - Properties of Red Blood Cell Deformability. *Front Physiol*. 2018;9:656. doi: 10.3389/fphys.2018.00656
120. Baskurt OK, Meiselman HJ. Red blood cell mechanical stability test. *Clin Hemorheol Microcirc*. 2013;55:55-62. doi: 10.3233/CH-131689
121. Gautier EF, Leduc M, Cochet S, Bailly K, Lacombe C, Mohandas N, Guillonneau F, El Nemer W, Mayeux P. Absolute proteome quantification of highly purified populations of circulating reticulocytes and mature erythrocytes. *Blood Adv*. 2018;2:2646-2657. doi: 10.1182/bloodadvances.2018023515
122. Vaisey G, Banerjee P, North AJ, Haselwandter CA, MacKinnon R. PIEZO1 as a force-through-membrane sensor in red blood cells. *Elife*. 2022;11. doi: 10.7554/eLife.82621
123. Faucherre A, Kissa K, Nargeot J, Mangoni ME, Jopling C. PIEZO1 plays a role in erythrocyte volume homeostasis. *Haematologica*. 2014;99:70-75. doi: 10.3324/haematol.2013.086090
124. Cahalan SM, Lukacs V, Ranade SS, Chien S, Bandell M, Patapoutian A. PIEZO1 links mechanical forces to red blood cell volume. *Elife*. 2015;4. doi: 10.7554/eLife.07370
125. Andolfo I, De Rosa G, Errichiello E, Manna F, Rosato BE, Gambale A, Vetro A, Calcaterra V, Pelizzo G, De Franceschi L, et al. PIEZO1 Hypomorphic Variants in Congenital Lymphatic Dysplasia Cause Shape and Hydration Alterations of Red Blood Cells. *Front Physiol*. 2019;10:258. doi: 10.3389/fphys.2019.00258
126. Albuissou J, Murthy SE, Bandell M, Coste B, Louis-Dit-Picard H, Mathur J, Feneant-Thibault M, Tertian G, de Jaureguiberry JP, Syfuss PY, et al. Dehydrated hereditary stomatocytosis linked to gain-of-function mutations in mechanically activated PIEZO1 ion channels. *Nat Commun*. 2013;4:1884. doi: 10.1038/ncomms2899
127. Andolfo I, Alper SL, De Franceschi L, Auriemma C, Russo R, De Falco L, Vallefucio F, Esposito MR, Vandorpe DH, Shmukler BE, et al. Multiple clinical forms of dehydrated hereditary stomatocytosis arise from mutations in PIEZO1. *Blood*. 2013;121:3925-3935. doi: 10.1182/blood-2013-02-482489
128. Bae C, Gnanasambandam R, Nicolai C, Sachs F, Gottlieb PA. Xerocytosis is caused by mutations that alter the kinetics of the mechanosensitive channel PIEZO1. *Proc Natl Acad Sci U S A*. 2013;110:E1162-1168. doi: 10.1073/pnas.1219777110
129. Glogowska E, Schneider ER, Maksimova Y, Schulz VP, Lezon-Geyda K, Wu J, Radhakrishnan K, Keel SB, Mahoney D, Freidmann AM, et al. Novel mechanisms of PIEZO1 dysfunction in hereditary xerocytosis. *Blood*. 2017;130:1845-1856. doi: 10.1182/blood-2017-05-786004
130. Picard V, Guitton C, Thuret I, Rose C, Bendelac L, Ghazal K, Aguilar-Martinez P, Badens C, Barro C, Beneteau C, et al. Clinical and biological features in PIEZO1-hereditary xerocytosis and

- Gardos channelopathy: a retrospective series of 126 patients. *Haematologica*. 2019;104:1554-1564. doi: 10.3324/haematol.2018.205328
131. Zarychanski R, Schulz VP, Houston BL, Maksimova Y, Houston DS, Smith B, Rinehart J, Gallagher PG. Mutations in the mechanotransduction protein PIEZO1 are associated with hereditary xerocytosis. *Blood*. 2012;120:1908-1915. doi: 10.1182/blood-2012-04-422253
 132. Danielczok JG, Terriac E, Hertz L, Petkova-Kirova P, Lautenschlager F, Laschke MW, Kaestner L. Red Blood Cell Passage of Small Capillaries Is Associated with Transient Ca(2+)-mediated Adaptations. *Front Physiol*. 2017;8:979. doi: 10.3389/fphys.2017.00979
 133. Cinar E, Zhou S, DeCoursey J, Wang Y, Waugh RE, Wan J. PIEZO1 regulates mechanotransductive release of ATP from human RBCs. *Proc Natl Acad Sci U S A*. 2015;112:11783-11788. doi: 10.1073/pnas.1507309112
 134. Nunomura W, Takakuwa Y. Regulation of protein 4.1R interactions with membrane proteins by Ca²⁺ and calmodulin. *Front Biosci*. 2006;11:1522-1539. doi: 10.2741/1901
 135. Diez-Silva M, Dao M, Han J, Lim CT, Suresh S. Shape and Biomechanical Characteristics of Human Red Blood Cells in Health and Disease. *MRS Bull*. 2010;35:382-388. doi: 10.1557/mrs2010.571
 136. Kuck L, Peart JN, Simmonds MJ. PIEZO1 regulates shear-dependent nitric oxide production in human erythrocytes. *Am J Physiol Heart Circ Physiol*. 2022;323:H24-H37. doi: 10.1152/ajpheart.00185.2022
 137. Leo F, Suvorava T, Heuser SK, Li J, LoBue A, Barbarino F, Piragine E, Schneckmann R, Hutzler B, Good ME, et al. Red Blood Cell and Endothelial eNOS Independently Regulate Circulating Nitric Oxide Metabolites and Blood Pressure. *Circulation*. 2021;144:870-889. doi: 10.1161/CIRCULATIONAHA.120.049606
 138. Caulier A, Garçon L. PIEZO1, sensing the touch during erythropoiesis. *Curr Opin Hematol*. 2022;29:112-118. doi: 10.1097/MOH.0000000000000706
 139. Caulier A, Jankovsky N, Demont Y, Ouled-Haddou H, Demagny J, Guitton C, Merlusca L, Lebon D, Vong P, Aubry A, et al. PIEZO1 activation delays erythroid differentiation of normal and hereditary xerocytosis-derived human progenitor cells. *Haematologica*. 2020;105:610-622. doi: 10.3324/haematol.2019.218503
 140. Moura PL, Hawley BR, Dobbe JGG, Streekstra GJ, Rab MAE, Bianchi P, van Wijk R, Toye AM, Satchwell TJ. PIEZO1 gain-of-function mutations delay reticulocyte maturation in hereditary xerocytosis. *Haematologica*. 2020;105:e268-e271. doi: 10.3324/haematol.2019.231159
 141. Ebel ER, Kuypers FA, Lin C, Petrov DA, Egan ES. Common host variation drives malaria parasite fitness in healthy human red cells. *Elife*. 2021;10. doi: 10.7554/eLife.69808
 142. Kwiatkowski DP. How malaria has affected the human genome and what human genetics can teach us about malaria. *Am J Hum Genet*. 2005;77:171-192. doi: 10.1086/432519
 143. Ma S, Cahalan S, LaMonte G, Grubaugh ND, Zeng W, Murthy SE, Paytas E, Gamini R, Lukacs V, Whitwam T, et al. Common PIEZO1 Allele in African Populations Causes RBC Dehydration and Attenuates Plasmodium Infection. *Cell*. 2018;173:443-455 e412. doi: 10.1016/j.cell.2018.02.047
 144. Nguetse CN, Purington N, Ebel ER, Shakya B, Tetard M, Kremsner PG, Velavan TP, Egan ES. A common polymorphism in the mechanosensitive ion channel PIEZO1 is associated with protection from severe malaria in humans. *Proc Natl Acad Sci U S A*. 2020;117:9074-9081. doi: 10.1073/pnas.1919843117
 145. Lohia R, Allegrini B, Berry L, Guizouarn H, Cerdan R, Abkarian M, Douguet D, Honore E, Wengelnik K. Pharmacological activation of PIEZO1 in human red blood cells prevents Plasmodium falciparum invasion. *Cell Mol Life Sci*. 2023;80:124. doi: 10.1007/s00018-023-04773-0

146. Adjemout M, Pouvelle B, Thiam F, Thiam A, Torres M, Nisar S, Mbengue B, Dieye A, Rihet P, Marquet S. Concurrent PIEZO1 activation and ATP2B4 blockade effectively reduce the risk of cerebral malaria and inhibit in vitro Plasmodium falciparum multiplication in red blood cells. *Genes Dis.* 2023;10:2210-2214. doi: 10.1016/j.gendis.2023.02.029
147. Karamatic Crew V, Tilley LA, Satchwell TJ, AlSubhi SA, Jones B, Spring FA, Walser PJ, Martins Freire C, Murciano N, Rotordam MG, et al. Missense mutations in PIEZO1, which encodes the PIEZO1 mechanosensor protein, define Er red blood cell antigens. *Blood.* 2023;141:135-146. doi: 10.1182/blood.2022016504
148. Daniels GL, Judd WJ, Moore BP, Neitzer G, Ouellet P, Plantos M, Verrette S. A 'new' high frequency antigen Era. *Transfusion.* 1982;22:189-193. doi: 10.1046/j.1537-2995.1982.22382224938.x
149. Hansen CE, Qiu Y, McCarty OJT, Lam WA. Platelet Mechanotransduction. *Annu Rev Biomed Eng.* 2018;20:253-275. doi: 10.1146/annurev-bioeng-062117-121215
150. Schoen I, Kenny M, Patil S. Platelet mechanosensing as key to understanding platelet function. *Curr Opin Hematol.* 2023. doi: 10.1097/MOH.0000000000000788
151. Ilkan Z, Wright JR, Goodall AH, Gibbins JM, Jones CI, Mahaut-Smith MP. Evidence for shear-mediated Ca(2+) entry through mechanosensitive cation channels in human platelets and a megakaryocytic cell line. *J Biol Chem.* 2017;292:9204-9217. doi: 10.1074/jbc.M116.766196
152. Liu L, Zhang Q, Xiao S, Sun Z, Ding S, Chen Y, Wang L, Yin X, Liao F, Jiang LH, et al. Inhibition of Shear-Induced Platelet Aggregation by Xueshuantong via Targeting PIEZO1 Channel-Mediated Ca(2+) Signaling Pathway. *Front Pharmacol.* 2021;12:606245. doi: 10.3389/fphar.2021.606245
153. Zainal Abidin NA, Poon EKW, Szydzik C, Timofeeva M, Akbaridoust F, Brazilek RJ, Tovar Lopez FJ, Ma X, Lav C, Marusic I, et al. An extensional strain sensing mechanosome drives adhesion-independent platelet activation at supraphysiological hemodynamic gradients. *BMC Biol.* 2022;20:73. doi: 10.1186/s12915-022-01274-7
154. Solis AG, Bielecki P, Steach HR, Sharma L, Harman CCD, Yun S, de Zoete MR, Warnock JN, To SDF, York AG, et al. Mechanosensation of cyclical force by PIEZO1 is essential for innate immunity. *Nature.* 2019;573:69-74. doi: 10.1038/s41586-019-1485-8
155. Baratchi S, Zaldivia MTK, Wallert M, Loseff-Silver J, Al-Aryahi S, Zamani J, Thurgood P, Salim A, Htun NM, Stub D, et al. Transcatheter Aortic Valve Implantation Represents an Anti-Inflammatory Therapy Via Reduction of Shear Stress-Induced, PIEZO-1-Mediated Monocyte Activation. *Circulation.* 2020;142:1092-1105. doi: 10.1161/CIRCULATIONAHA.120.045536
156. Aykut B, Chen R, Kim JI, Wu D, Shadaloey SAA, Abengozar R, Preiss P, Saxena A, Pushalkar S, Leinwand J, et al. Targeting PIEZO1 unleashes innate immunity against cancer and infectious disease. *Sci Immunol.* 2020;5. doi: 10.1126/sciimmunol.abb5168
157. Atcha H, Jairaman A, Holt JR, Meli VS, Nagalla RR, Veerasubramanian PK, Brumm KT, Lim HE, Othy S, Cahalan MD, et al. Mechanically activated ion channel PIEZO1 modulates macrophage polarization and stiffness sensing. *Nat Commun.* 2021;12:3256. doi: 10.1038/s41467-021-23482-5
158. Wang Y, Yang H, Jia A, Wang Y, Yang Q, Dong Y, Hou Y, Cao Y, Dong L, Bi Y, et al. Dendritic cell PIEZO1 directs the differentiation of T(H)1 and T(reg) cells in cancer. *Elife.* 2022;11. doi: 10.7554/eLife.79957
159. Chakraborty M, Chu K, Shrestha A, Revelo XS, Zhang X, Gold MJ, Khan S, Lee M, Huang C, Akbari M, et al. Mechanical Stiffness Controls Dendritic Cell Metabolism and Function. *Cell Rep.* 2021;34:108609. doi: 10.1016/j.celrep.2020.108609
160. Hope JM, Dombroski JA, Pereles RS, Lopez-Cavestany M, Greenlee JD, Schwager SC, Reinhart-King CA, King MR. Fluid shear stress enhances T cell activation through PIEZO1. *BMC Biol.* 2022;20:61. doi: 10.1186/s12915-022-01266-7

161. Liu CSC, Raychaudhuri D, Paul B, Chakrabarty Y, Ghosh AR, Rahaman O, Talukdar A, Ganguly D. Cutting Edge: PIEZO1 Mechanosensors Optimize Human T Cell Activation. *J Immunol*. 2018;200:1255-1260. doi: 10.4049/jimmunol.1701118
162. Jairaman A, Othy S, Dynes JL, Yeromin AV, Zavala A, Greenberg ML, Nourse JL, Holt JR, Cahalan SM, Marangoni F, et al. PIEZO1 channels restrain regulatory T cells but are dispensable for effector CD4(+) T cell responses. *Sci Adv*. 2021;7. doi: 10.1126/sciadv.abg5859
163. Ma S, Dubin AE, Zhang Y, Mousavi SAR, Wang Y, Coombs AM, Loud M, Andolfo I, Patapoutian A. A role of PIEZO1 in iron metabolism in mice and humans. *Cell*. 2021;184:969-982 e913. doi: 10.1016/j.cell.2021.01.024
164. Wehrwein EA, Joyner MJ. Regulation of blood pressure by the arterial baroreflex and autonomic nervous system. *Handb Clin Neurol*. 2013;117:89-102. doi: 10.1016/B978-0-444-53491-0.00008-0
165. Moore JP, Simpson LL, Drinkhill MJ. Differential contributions of cardiac, coronary and pulmonary artery vagal mechanoreceptors to reflex control of the circulation. *The Journal of physiology*. 2022;600:4069-4087. doi: 10.1113/JP282305
166. Mortara A, La Rovere MT, Pinna GD, Prpa A, Maestri R, Febo O, Pozzoli M, Opasich C, Tavazzi L. Arterial baroreflex modulation of heart rate in chronic heart failure: clinical and hemodynamic correlates and prognostic implications. *Circulation*. 1997;96:3450-3458. doi: 10.1161/01.cir.96.10.3450
167. Min S, Chang RB, Prescott SL, Beeler B, Joshi NR, Strohlic DE, Liberles SD. Arterial Baroreceptors Sense Blood Pressure through Decorated Aortic Claws. *Cell Rep*. 2019;29:2192-2201 e2193. doi: 10.1016/j.celrep.2019.10.040
168. Stocker SD, Sved AF, Andresen MC. Missing pieces of the PIEZO1/PIEZO2 baroreceptor hypothesis: an autonomic perspective. *Journal of neurophysiology*. 2019;122:1207-1212. doi: 10.1152/jn.00315.2019
169. Huo L, Gao Y, Zhang D, Wang S, Han Y, Men H, Yang Z, Qin X, Wang R, Kong D, et al. PIEZO2 channel in nodose ganglia neurons is essential in controlling hypertension in a pathway regulated directly by Nedd4-2. *Pharmacol Res*. 2021;164:105391. doi: 10.1016/j.phrs.2020.105391
170. Drummond HA, Price MP, Welsh MJ, Abboud FM. A molecular component of the arterial baroreceptor mechanotransducer. *Neuron*. 1998;21:1435-1441. doi: 10.1016/s0896-6273(00)80661-3
171. Lu Y, Ma X, Sabharwal R, Snitsarev V, Morgan D, Rahmouni K, Drummond HA, Whiteis CA, Costa V, Price M, et al. The ion channel ASIC2 is required for baroreceptor and autonomic control of the circulation. *Neuron*. 2009;64:885-897. doi: 10.1016/j.neuron.2009.11.007
172. Lau OC, Shen B, Wong CO, Tjong YW, Lo CY, Wang HC, Huang Y, Yung WH, Chen YC, Fung ML, et al. Author Correction: TRPC5 channels participate in pressure-sensing in aortic baroreceptors. *Nat Commun*. 2018;9:16184. doi: 10.1038/ncomms16184
173. Lu HJ, Nguyen TL, Hong GS, Pak S, Kim H, Kim H, Kim DY, Kim SY, Shen Y, Ryu PD, et al. Tentonin 3/TMEM150C senses blood pressure changes in the aortic arch. *J Clin Invest*. 2020;130:3671-3683. doi: 10.1172/JCI133798
174. Kingdom R, Wright CF. Incomplete Penetrance and Variable Expressivity: From Clinical Studies to Population Cohorts. *Front Genet*. 2022;13:920390. doi: 10.3389/fgene.2022.920390
175. Li JV, Ng CA, Cheng D, Zhou Z, Yao M, Guo Y, Yu ZY, Ramaswamy Y, Ju LA, Kuchel PW, et al. Modified N-linked glycosylation status predicts trafficking defective human PIEZO1 channel mutations. *Commun Biol*. 2021;4:1038. doi: 10.1038/s42003-021-02528-w
176. Konishi T, Kamiyama K, Osato T, Yoshimoto T, Aoki T, Anzai T, Tanaka S. Increased PIEZO1 expression in myofibroblasts in patients with symptomatic carotid atherosclerotic plaques

- undergoing carotid endarterectomy: A pilot study. *Vascular*. 2023;17085381231192380. doi: 10.1177/17085381231192380
177. Liao J, Lu W, Chen Y, Duan X, Zhang C, Luo X, Lin Z, Chen J, Liu S, Yan H, et al. Upregulation of PIEZO1 (PIEZO Type Mechanosensitive Ion Channel Component 1) Enhances the Intracellular Free Calcium in Pulmonary Arterial Smooth Muscle Cells From Idiopathic Pulmonary Arterial Hypertension Patients. *Hypertension*. 2021;77:1974-1989. doi: 10.1161/HYPERTENSIONAHA.120.16629
 178. Chen J, Miao J, Zhou D, Liao J, Wang Z, Lin Z, Zhang C, Luo X, Li Y, Li X, et al. Upregulation of mechanosensitive channel PIEZO1 involved in high shear stress-induced pulmonary hypertension. *Thromb Res*. 2022;218:52-63. doi: 10.1016/j.thromres.2022.08.006
 179. Li J, Wang Q, Xia G, Adilijiang N, Li Y, Hou Z, Fan Z, Li J. Recent Advances in Targeted Drug Delivery Strategy for Enhancing Oncotherapy. *Pharmaceutics*. 2023;15. doi: 10.3390/pharmaceutics15092233
 180. Chamundeeswari M, Jeslin J, Verma ML. Nanocarriers for drug delivery applications. *Environmental Chemistry Letters*. 2018;17:849-865. doi: 10.1007/s10311-018-00841-1
 181. Diem K, Fauler M, Fois G, Hellmann A, Winokurov N, Schumacher S, Kranz C, Frick M. Mechanical stretch activates PIEZO1 in caveolae of alveolar type I cells to trigger ATP release and paracrine stimulation of surfactant secretion from alveolar type II cells. *FASEB J*. 2020;34:12785-12804. doi: 10.1096/fj.202000613RRR
 182. Ohyama S, Ouchi T, Kimura M, Kurashima R, Yasumatsu K, Nishida D, Hitomi S, Ubaidus S, Kuroda H, Ito S, et al. PIEZO1-pannexin-1-P2X(3) axis in odontoblasts and neurons mediates sensory transduction in dentinal sensitivity. *Front Physiol*. 2022;13:891759. doi: 10.3389/fphys.2022.891759
 183. Desplat A, Penalba V, Gros E, Parpaite T, Coste B, Delmas P. PIEZO1-Pannexin1 complex couples force detection to ATP secretion in cholangiocytes. *Journal of General Physiology*. 2021;153. doi: 10.1085/jgp.202112871
 184. Panciera T, Azzolin L, Cordenonsi M, Piccolo S. Mechanobiology of YAP and TAZ in physiology and disease. *Nat Rev Mol Cell Biol*. 2017;18:758-770. doi: 10.1038/nrm.2017.87
 185. Kim OH, Choi YW, Park JH, Hong SA, Hong M, Chang IH, Lee HJ. Fluid shear stress facilitates prostate cancer metastasis through PIEZO1-Src-YAP axis. *Life Sci*. 2022;308:120936. doi: 10.1016/j.lfs.2022.120936
 186. Xiong Y, Dong L, Bai Y, Tang H, Li S, Luo D, Liu F, Bai J, Yang S, Song X. PIEZO1 activation facilitates ovarian cancer metastasis via Hippo/YAP signaling axis. *Channels (Austin)*. 2022;16:159-166. doi: 10.1080/19336950.2022.2099381
 187. Pathak MM, Nourse JL, Tran T, Hwe J, Arulmoli J, Le DT, Bernardis E, Flanagan LA, Tombola F. Stretch-activated ion channel PIEZO1 directs lineage choice in human neural stem cells. *Proc Natl Acad Sci U S A*. 2014;111:16148-16153. doi: 10.1073/pnas.1409802111
 188. Wang L, You X, Lotinun S, Zhang L, Wu N, Zou W. Mechanical sensing protein PIEZO1 regulates bone homeostasis via osteoblast-osteoclast crosstalk. *Nat Commun*. 2020;11:282. doi: 10.1038/s41467-019-14146-6
 189. Zhong G, Su S, Li J, Zhao H, Hu D, Chen J, Li S, Lin Y, Wen L, Lin X, et al. Activation of PIEZO1 promotes osteogenic differentiation of aortic valve interstitial cell through YAP-dependent glutaminolysis. *Sci Adv*. 2023;9:eadg0478. doi: 10.1126/sciadv.adg0478
 190. Yang Y, Wang D, Zhang C, Yang W, Li C, Gao Z, Pei K, Li Y. PIEZO1 mediates endothelial atherogenic inflammatory responses via regulation of YAP/TAZ activation. *Hum Cell*. 2022;35:51-62. doi: 10.1007/s13577-021-00600-5
 191. Karlsson M, Zhang C, Mear L, Zhong W, Digre A, Katona B, Sjostedt E, Butler L, Odeberg J, Dusart P, et al. A single-cell type transcriptomics map of human tissues. *Sci Adv*. 2021;7. doi: 10.1126/sciadv.abh2169

192. Ma S, Dubin AE, Zhang Y, Mousavi SAR, Wang Y, Coombs AM, Loud M, Andolfo I, Patapoutian A. A role of PIEZO1 in iron metabolism in mice and humans. *Cell*. 2021. doi: 10.1016/j.cell.2021.01.024
193. Andolfo I, Rosato BE, Manna F, De Rosa G, Marra R, Gambale A, Girelli D, Russo R, Iolascon A. Gain-of-function mutations in PIEZO1 directly impair hepatic iron metabolism via the inhibition of the BMP/SMADs pathway. *Am J Hematol*. 2020;95:188-197. doi: 10.1002/ajh.25683
194. Vignes S, Kaltenbach S, Garcon L, Arrive L, Asnafi V, Guitton C, Bouligand J, Delarue A, Picard V. PIEZO1-gene gain-of-function mutations with lower limb lymphedema onset in an adult: Clinical, scintigraphic, and noncontrast magnetic resonance lymphography findings. *Am J Med Genet A*. 2022;188:243-248. doi: 10.1002/ajmg.a.62476
195. Andolfo I, Alper SL, De Franceschi L, Auriemma C, Russo R, De Falco L, Vallefucio F, Esposito MR, Vandorpe DH, Shmukler BE, et al. Multiple clinical forms of dehydrated hereditary stomatocytosis arise from mutations in PIEZO1. *Blood*. 2013;121:3925-3935, S3921-3912. doi: 10.1182/blood-2013-02-482489
196. Coste B, Houge G, Murray MF, Stitzel N, Bandell M, Giovanni MA, Philippakis A, Hoischen A, Riemer G, Steen U, et al. Gain-of-function mutations in the mechanically activated ion channel PIEZO2 cause a subtype of Distal Arthrogryposis. *Proceedings of the National Academy of Sciences of the United States of America*. 2013;110:4667-4672. doi: 10.1073/pnas.1221400110
197. McMillin MJ, Beck AE, Chong JX, Shively KM, Buckingham KJ, Gildersleeve HI, Aracena MI, Aylsworth AS, Bitoun P, Carey JC, et al. Mutations in PIEZO2 cause Gordon syndrome, Marden-Walker syndrome, and distal arthrogryposis type 5. *Am J Hum Genet*. 2014;94:734-744. doi: 10.1016/j.ajhg.2014.03.015
198. Szczot M, Liljencrantz J, Ghitani N, Barik A, Lam R, Thompson JH, Bharucha-Goebel D, Saade D, Necaie A, Donkervoort S, et al. PIEZO2 mediates injury-induced tactile pain in mice and humans. *Sci Transl Med*. 2018;10. doi: 10.1126/scitranslmed.aat9892
199. Chesler AT, Szczot M, Bharucha-Goebel D, Ceko M, Donkervoort S, Laubacher C, Hayes LH, Alter K, Zampieri C, Stanley C, et al. The Role of PIEZO2 in Human Mechanosensation. *The New England journal of medicine*. 2016;375:1355-1364. doi: 10.1056/NEJMoa1602812
200. Delle Vedove A, Storbeck M, Heller R, Holker I, Hebbar M, Shukla A, Magnusson O, Cirak S, Girisha KM, O'Driscoll M, et al. Biallelic Loss of Proprioception-Related PIEZO2 Causes Muscular Atrophy with Perinatal Respiratory Distress, Arthrogryposis, and Scoliosis. *Am J Hum Genet*. 2016;99:1206-1216. doi: S0002-9297(16)30400-1 [pii]
201. Marshall KL, Saade D, Ghitani N, Coombs AM, Szczot M, Keller J, Ogata T, Daou I, Stowers LT, Bonnemann CG, et al. PIEZO2 in sensory neurons and urothelial cells coordinates urination. *Nature*. 2020;588:290-295. doi: 10.1038/s41586-020-2830-7

Figure 1.

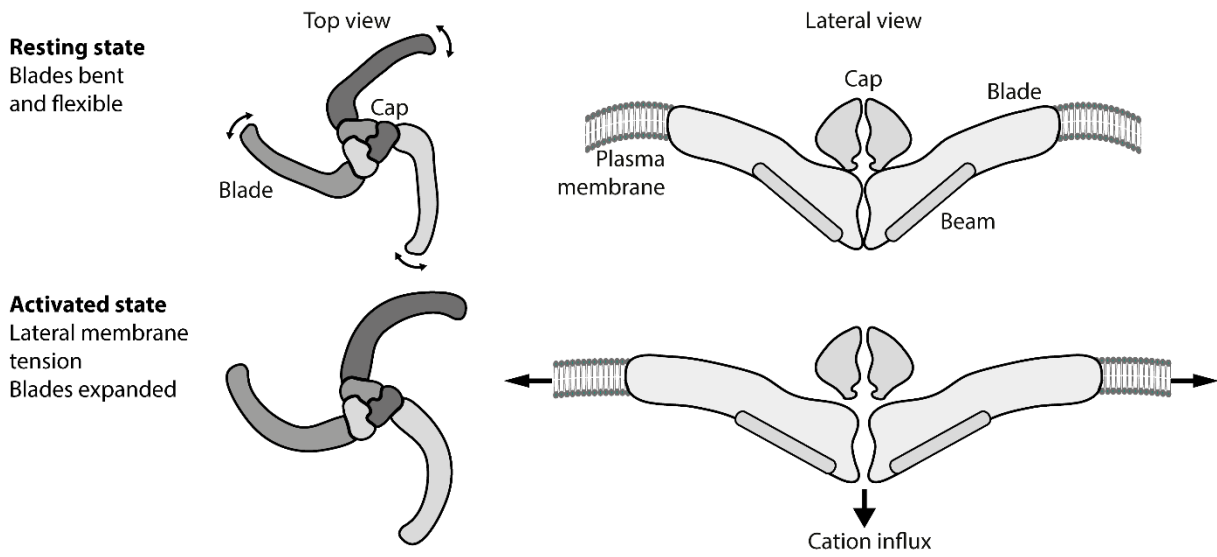


Figure 2.

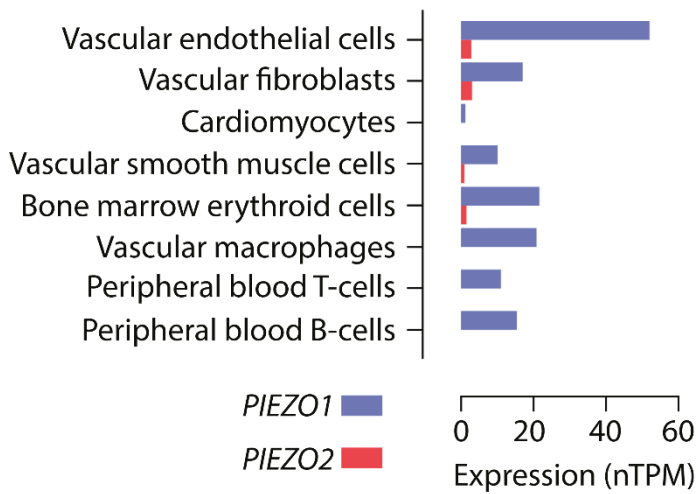


Figure 3.

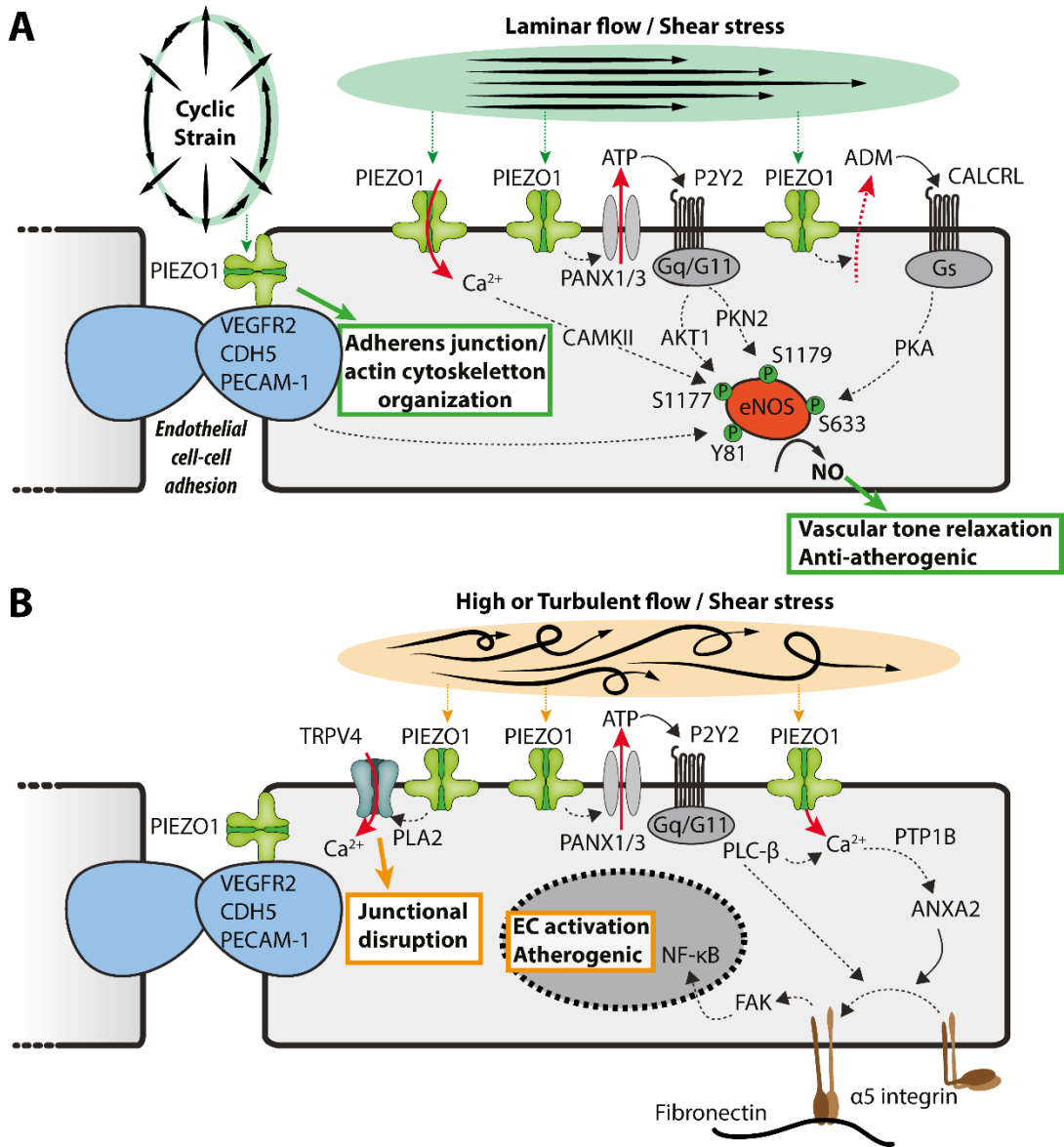


Figure 4.

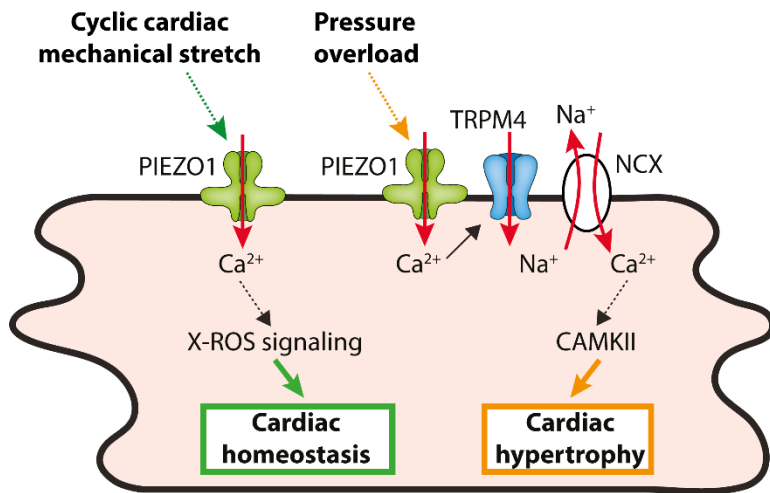


Figure 5.

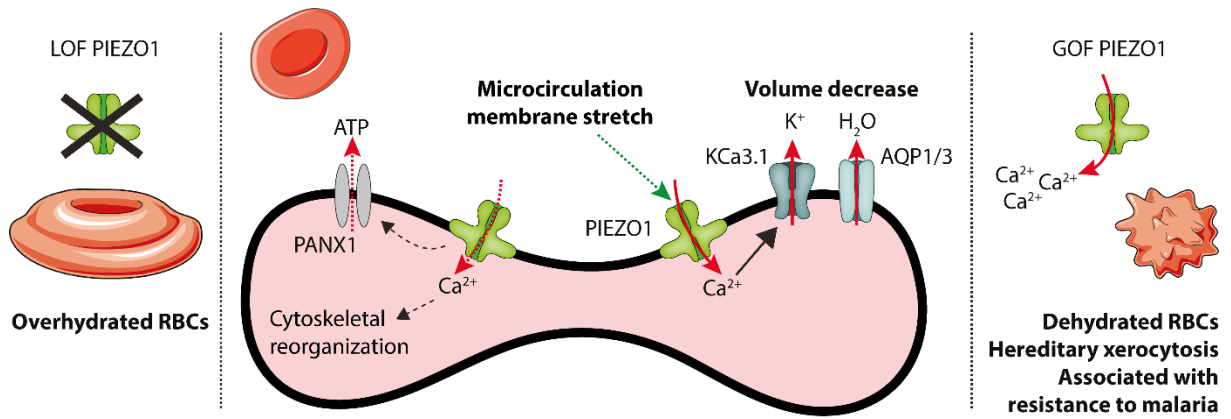


Figure 6.

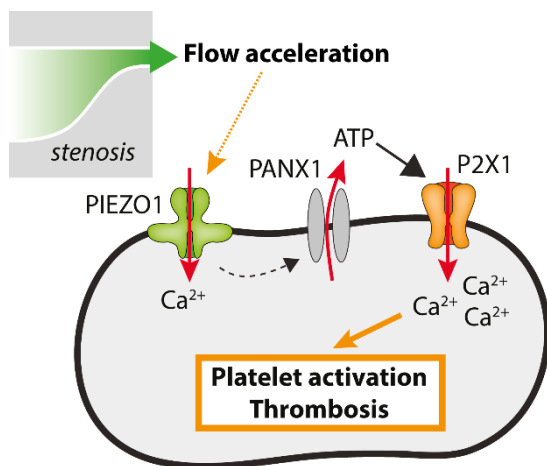
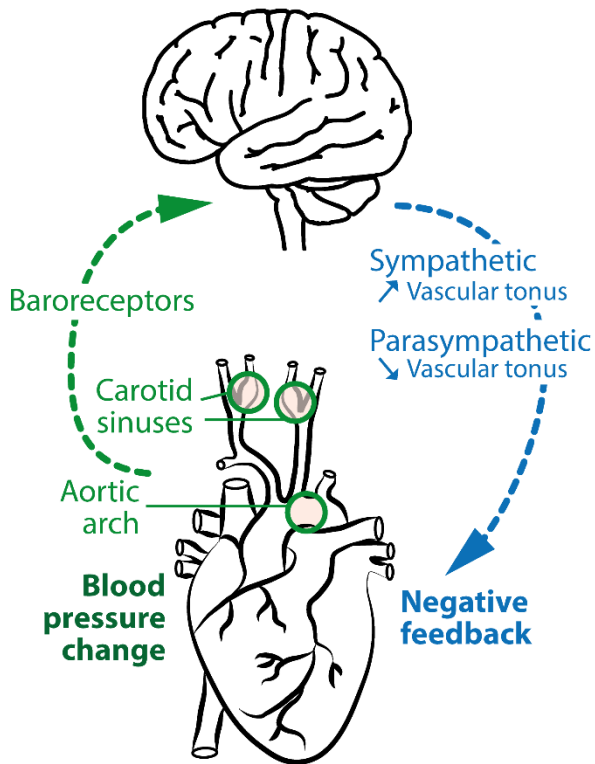
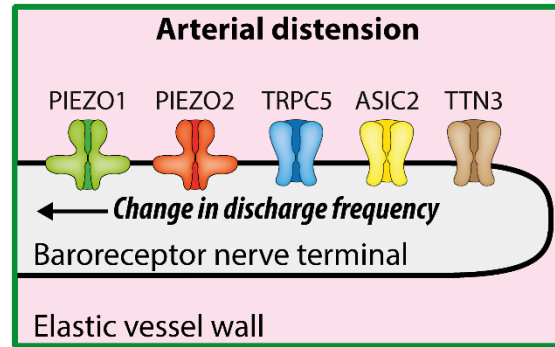


Figure 7.

A Baroreflex



B



C

